

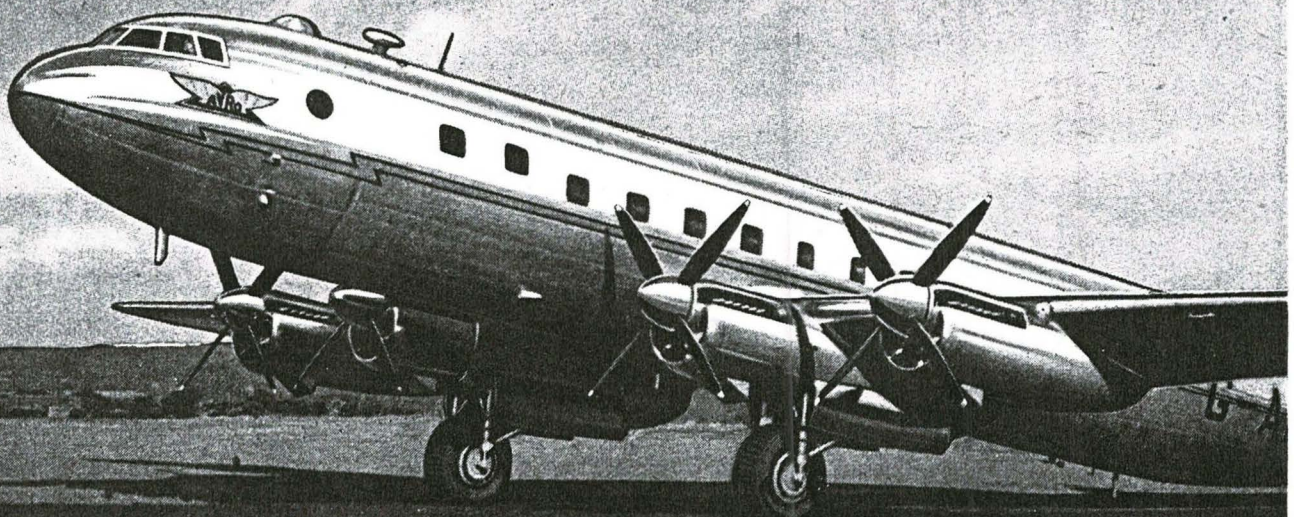
Pressurized for luxurious travel

Latest of a long line of successful aircraft, the Tudor II is a worthy upholder of the Avro tradition of service on the airways of the world. The fuselage accommodation of the Tudor II varies to meet particular operators' requirements — from 60 seats down to 40 — according to the range and layout decided upon. With an economical cruising speed of 235 m.p.h. and a top speed of well over 300 m.p.h., passengers travel in the greatest possible comfort in this fully pressurised aircraft, which is efficiently heated and air-conditioned, and equipped for luxury service on the journey.

A Superplane by



A. V. ROE CANADA LIMITED, BOX 430, TERMINAL A, TORONTO, CANADA.



THE AVRO TUDOR II

Four Rolls-Royce Merlin Engines

A. V. ROE & CO., LTD., MANCHESTER, ENGLAND (Branch of Hawker Siddeley Aircraft Co. Ltd.)