

Gulfport Historical Museum

2
0
0
4



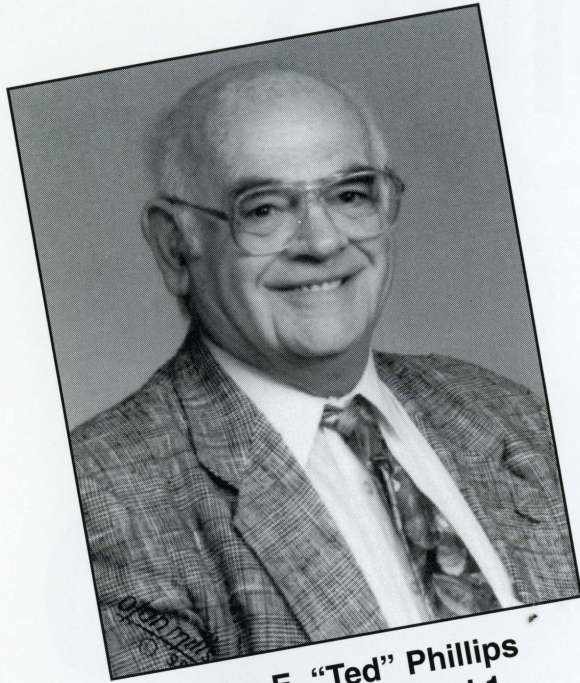
2
0
0
4

20th Anniversary

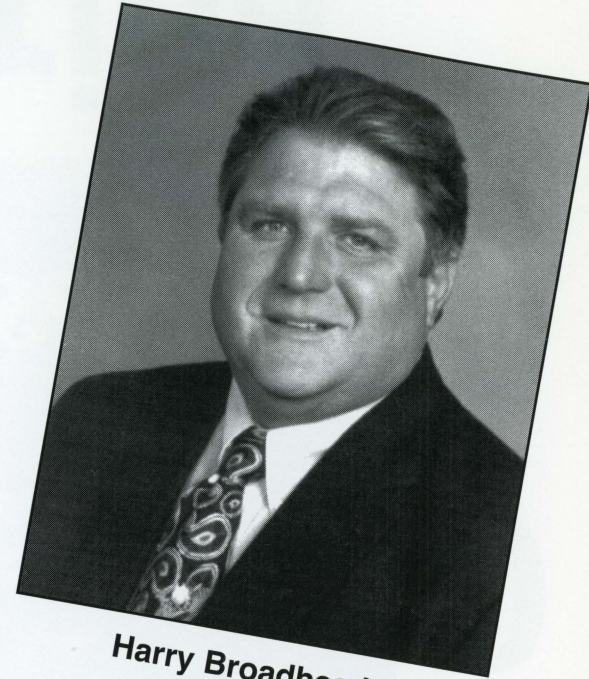
Gulfport, Florida

CITY GOVERNMENT

Your Elected Officials



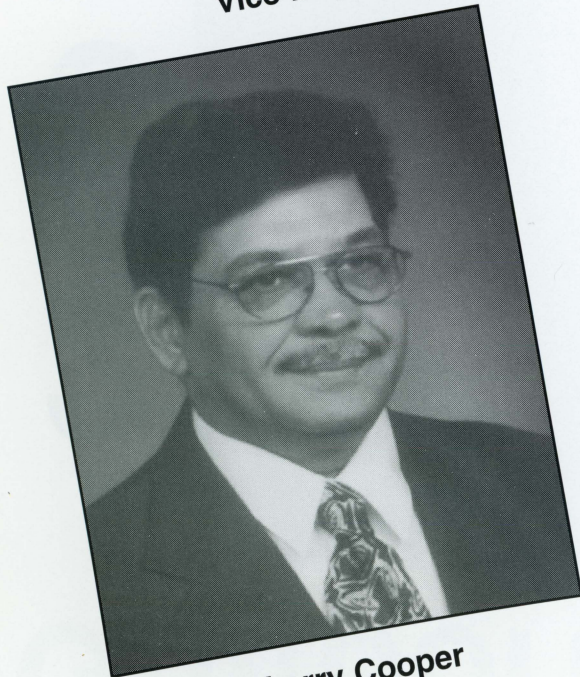
John E. "Ted" Phillips
Vice Mayor, Ward 1



Harry Broadhead
Ward 3



Mike Yakes, Mayor



Larry Cooper
Ward 4



Dawn Fisher
Ward 2

A FULL SERVICE CITY

Where to reach us

911 - POLICE - FIRE - PARAMEDICS - EMERGENCY - 911

Police (Non-Emergency)	893-1030	Utility Billing	893-1000
Fire/EMS/Code Enforcement (Non-Emergency)	893-1083	Building/Zoning	893-1000
City Hall/Information	893-1000	Sanitation/Trash Pickup	893-1000
Senior Center	893-2237	City Manager/City Clerk	893-1000
G.E.M.S.	893-2242	Marina/Ship Store	893-1071
Recreation Center	893-1068	Library	893-1074
Reassurance	893-2237	Casino/Theater	893-1070

- ◆ City Hall is the location for paying Water/Sewer and Time Warner Cable Bills.
- ◆ Reassurance Program provides daily contact for residents living alone.
- ◆ Gulfport Extended Mini-Bus Service (G.E.M.S.) provides transportation from home to doctor or store for elderly and/or handicapped.
- ◆ Senior Center provides congregate dining and food commodities as well as assistance with Social Services, Social Security and Income Taxes.
- ◆ Tot Time Day Care three days a week; Pre-School program of three to five days a week; and daily after school recreation programs are provided at the Recreation Center including a full summer recreation program for children ages 5 through 13.
- ◆ Check out Audio and Video tapes, as well as books, and attend children's story time at the Library or get your GED.
- ◆ Ships' Store, boat ramp, fuel and pump-out available at Municipal Marina, 4630 29th Street South.
- ◆ Building Permits, Occupational Licenses, Inspections can be obtained at the Public Services Building, 5330 23rd Street South.
- ◆ Curbside Recycling; clear glass, plastic, aluminum, newspapers.
- ◆ Catherine A. Hickman Theater of Gulfport available for live performances.
- ◆ Police and Fire Explorer Scout programs for ages 14 to 21.
- ◆ FREE security surveys for City residents and businesses by Police Officer.
- ◆ FREE Fire and Pool Safety inspections by Fire Department.
- ◆ For additional information visit the world wide web at: www.ci.gulfport.fl.us/

City Beautiful



A view of St. Petersburg from Clam Bayou



Veteran's Park with Flags flying.



Skate Park for the athletic.



Birds eye view of Wood Ibis Park.

Holiday Sanitation Schedule

NEW YEAR'S DAY - THURSDAY, JANUARY 1, 2004

No change in Schedule

No Yard Pickup this week

MARTIN LUTHER KING JR. DAY - MONDAY, JANUARY 19, 2004

No Change in Schedule

PRESIDENT'S DAY - MONDAY, FEBRUARY 16, 2004

No Change in Schedule

MEMORIAL DAY - MONDAY, MAY 31, 2004

No Change in Schedule

INDEPENDENCE DAY - SUNDAY, JULY 4, 2004

Monday's Pickup will be on Tuesday, July 5, 2004

Tuesday's Pickup will be on Wednesday, July 6, 2004

No Yard Pickup this week

LABOR DAY - MONDAY, SEPTEMBER 6, 2004

No Change in Schedule

VETERAN'S DAY - THURSDAY, NOVEMBER 11, 2004

No Change in Schedule

THANKSGIVING DAY - THURSDAY, NOVEMBER 25, 2004

Thursday's Pickup will be on Wednesday, November 24, 2004

Friday's Pickup will remain on Schedule

No Yard Pickup this week

CHRISTMAS DAY - SATURDAY, DECEMBER 25, 2004

Friday's Pickup will be on Thursday, December 24, 2004

Thursday's Pickup will be on Wednesday, December 23, 2004

No Yard Pickup this week

GULFPORT HISTORICAL SOCIETY

OFFICERS OF THE GULFPORT HISTORICAL SOCIETY, INC.

President	Judy Ryerson
Vice President	Mary Atkinson
Secretary	Carol Valdes
Treasurer	Christine Brown

BOARD MEMBERS

Jo Arras	Catherine Culler
Nancie Fuller	Priscilla Hoon
John Milford	

MUSEUM STAFF

Curator	Miki Vaughan
Head Docent	Jo Arras
Newsletter Editor	Judy Ryerson

The Gulfport Historical Society was incorporated under the laws of the State of Florida as a not for profit association in 1981, with its major function dedicated to the operation of the Gulfport Historical Museum, where data and artifacts concerning the history of Gulfport could be collected, preserved, and exhibited for the community. The Gulfport Historical Museum is located at 5301 28th Avenue South and serves as a resource of research material for both individual citizens and historians. We are very pleased to now be open seven days a week. Our hours of

operation are 2:00 pm - 4:00 pm Sunday through Friday and 10:00 am - 12 noon on Saturday. The Society publishes a quarterly newsletter, a yearly civic calendar, and provides a monthly series of informative programs for its members and guests. In addition, two programs of wide community interest are held annually; the *Nostalgic Birthday Bash* celebrating the anniversary of Gulfport's Incorporation on October 12, 1910, and our new *Decade Celebration* this year offering an evening of entertainment featuring the 1930's to be held at the Catherine A. Hickman Theater of Gulfport on Friday night, February 27, 2004.

As we enter the year 2004, we will be celebrating the 20th Anniversary of operation of the Gulfport Historical Museum. The museum depends entirely on volunteers who serve in every capacity from serving on a committee, to conducting research and caring for the collection, serving as docents, or fulfilling any of the many tasks necessary to maintain our facilities and raise the funds needed for its operation. Without these dedicated volunteers we would have been unable to establish and maintain a museum that has become a true cultural benefit to the community.

In late 2003 we were very pleased to announce the establishment of a scholarship for a worthy Gulfport student to help in their continuing education. It has taken us all these years to acquire the funds necessary to fulfill this goal set out by Catherine A. Hickman when she first founded the Gulfport Historical Society.



The Methodist Church building being prepared for its move across 53rd Street in 1953

Gulfport Historical Society

Jenny Berry
REALTY
727-347-0187

A large, stylized key graphic is positioned on the right side of the page, pointing towards the text. The key has a circular head with a small circle in the center and a long, serrated blade. The entire graphic is rendered in a dark, textured style.

....has the Key to your Real Estate needs

24-HOUR SERVICE • OPEN EVERY DAY • BUYING • SELLING • LEASING
Town Shores Plaza - 5810 28th Avenue South Gulfport, Florida 33707

SUNDAY	MONDAY	TUESDAY	WEDNESDAY	THURSDAY	FRIDAY	SATURDAY
	FEBRUARY S M T W T F S 1 2 3 4 5 6 7 8 9 10 11 12 13 14 15 16 17 18 19 20 21 22 23 24 25 26 27 28 29			<i>New Years Day</i> 1 City Hall Closed	2 Gallery Walk City Hall Closed	3
4	5	6 Council Meeting	7 Crime Watch Meeting 7:00 pm Planning & Zoning Bd.	8	9	10
11	12	13 Historical Society Meeting 7:00 PM	14 Bd. of Adjustment	15	16	17 Saturday Stroll
18	<i>Martin Luther King, Jr. Day Observed</i> 19 City Hall Closed	20 Council Meeting	21	22	23	24 Lion's Journey For Sight
25	26	27	28	29	30	31 January 2004



**Boy & Girl Scouts Gulfport Hall
The Archie Tabor Memorial Building c. 1960**

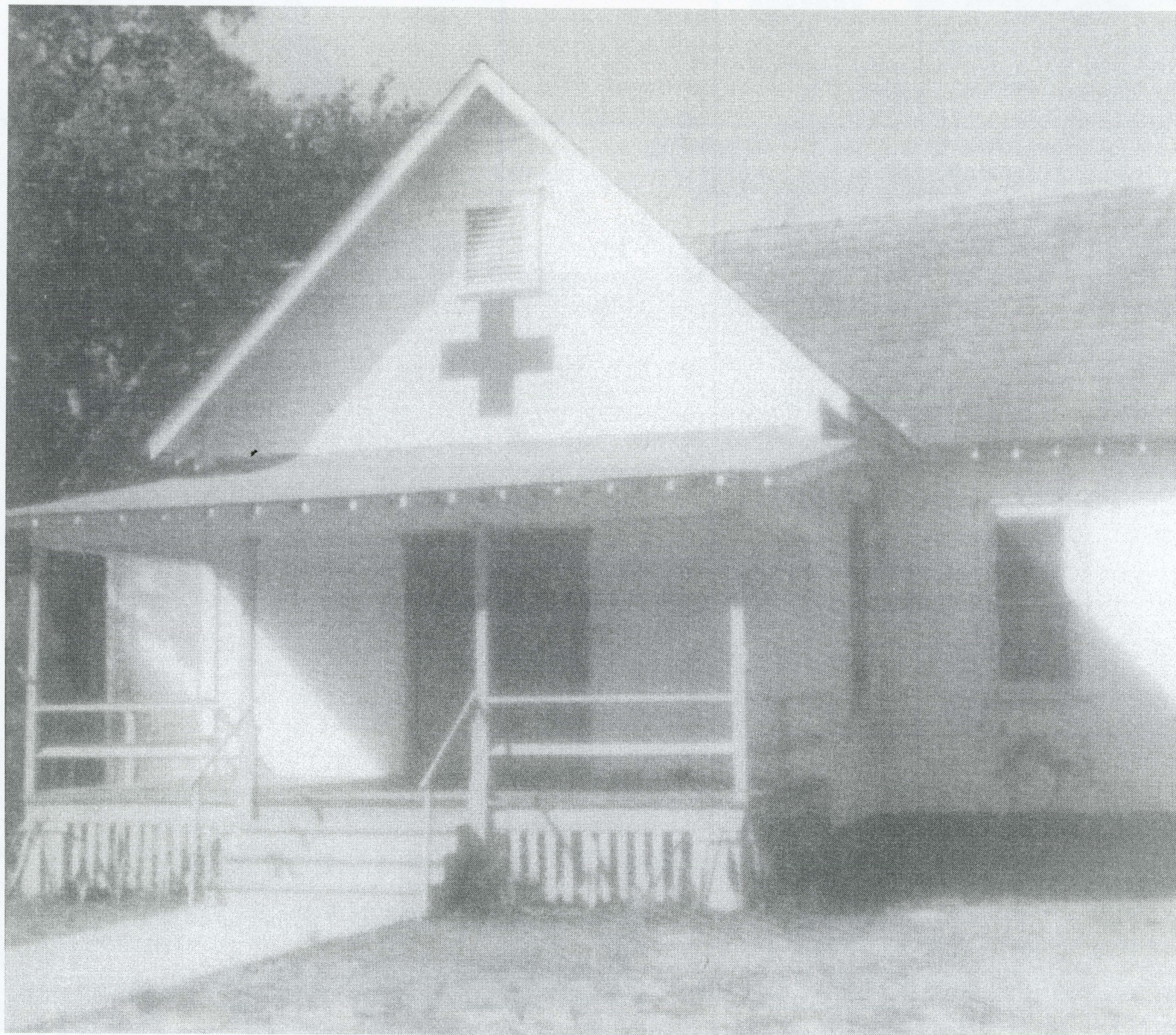
February 2004

Gulfport Historical Society

Sir Speedy
PRINTING • COPYING • DIGITAL NETWORK

4855 Park Street North
St. Petersburg, FL 33709
Ph (727) 545-9000 • Fax (727) 546-9463
E-Mail: sspark@tampabay.rr.com
www.sirspeedy.com

SUNDAY	MONDAY	TUESDAY	WEDNESDAY	THURSDAY	FRIDAY	SATURDAY
1	Groundhog Day 2	3	4 Crime Watch Meeting 7:00 pm Planning & Zoning Bd.	5	6 Gallery Walk	7 Lion's Pancake Breakfast 7 - 12
8	9	10 Council Meeting	11 Bd. of Adjustment	Lincoln's Birthday 12	13	Valentine's Day 14
15	President's Day Observed 16 City Hall Closed	17 Council Meeting	18	19	20	21 Saturday Stroll
Washington's Birthday 22	23	24	Ash Wednesday 25	26	Historical Decade Celebration of the 1930's C. Hickman Theater 27	28
29				JANUARY S M T W T F S 1 2 3 4 5 6 7 8 9 10 11 12 13 14 15 16 17 18 19 20 21 22 23 24 25 26 27 28 29 30 31	MARCH S M T W T F S 1 2 3 4 5 6 7 8 9 10 11 12 13 14 15 16 17 18 19 20 21 22 23 24 25 26 27 28 29 30 31	February 2004



In the 1970's the building housed the Red Cross, Civil Air Patrol and GEMS office.

March 2004

Gulfport Historical Society



Gulfport's Oldest Business - Locally Owned and Operated
#1 in Gulfport/Pasadena Real Estate Sales!

List with Caldwell Realty!

We're Here to Help! Thank you!

321-1212

SUNDAY	MONDAY	TUESDAY	WEDNESDAY	THURSDAY	FRIDAY	SATURDAY
	1	2	3	4	5	6
		Council Meeting	Crime Watch Meeting 7:00 pm Planning & Zoning Bd.		Gallery Walk	Lion's Pancake Breakfast 7 - 12
7	8	City General Election	10	11	12	13
		Historical Society Meeting 7:00 PM	Bd. of Adjustment			
14	15	16	St. Patrick's Day	18	19	20
		Council Meeting				Clam Bayou Cleanup Saturday Stroll
21	22	City Run-Off Election (if needed)	24	25	26	27
28	29	30	31	<div> FEBRUARY S M T W T F S 1 2 3 4 5 6 7 8 9 10 11 12 13 14 15 16 17 18 19 20 21 22 23 24 25 26 27 28 29 </div>	<div> APRIL S M T W T F S 1 2 3 4 5 6 7 8 9 10 11 12 13 14 15 16 17 18 19 20 21 22 23 24 25 26 27 28 29 30 </div>	March 2004



Dedication of the Museum Building April 1984

**L-R: Catherine Hickman, Founder/President Gulfport Historical Society, Bert Williams, Mayor,
Judy Ryerson, Richard Smith, Genevieve Smith, Helen Ross-Norberg**

April 2004

Gulfport Historical Society



Gateway To The Gulf REALTY



5314 Gulfport Blvd. S.
Gulfport, FL 33707

Maddy Guenther
Broker



Office: 727-328-2700

Fax: 727-328-2702

Cell: 727-656-2701

E-mail: GatewaytotheGulf@hotmail.com

www.GatewaytotheGulfRealty.com



SUNDAY	MONDAY	TUESDAY	WEDNESDAY	THURSDAY	FRIDAY	SATURDAY																																																																																				
<p>MARCH</p> <table> <tr><td>S</td><td>M</td><td>T</td><td>W</td><td>T</td><td>F</td><td>S</td></tr> <tr><td>1</td><td>2</td><td>3</td><td>4</td><td>5</td><td>6</td><td></td></tr> <tr><td>7</td><td>8</td><td>9</td><td>10</td><td>11</td><td>12</td><td>13</td></tr> <tr><td>14</td><td>15</td><td>16</td><td>17</td><td>18</td><td>19</td><td>20</td></tr> <tr><td>21</td><td>22</td><td>23</td><td>24</td><td>25</td><td>26</td><td>27</td></tr> <tr><td>28</td><td>29</td><td>30</td><td>31</td><td></td><td></td><td></td></tr> </table>	S	M	T	W	T	F	S	1	2	3	4	5	6		7	8	9	10	11	12	13	14	15	16	17	18	19	20	21	22	23	24	25	26	27	28	29	30	31				<p>MAY</p> <table> <tr><td>S</td><td>M</td><td>T</td><td>W</td><td>T</td><td>F</td><td>S</td></tr> <tr><td></td><td></td><td></td><td></td><td></td><td></td><td>1</td></tr> <tr><td>2</td><td>3</td><td>4</td><td>5</td><td>6</td><td>7</td><td>8</td></tr> <tr><td>9</td><td>10</td><td>11</td><td>12</td><td>13</td><td>14</td><td>15</td></tr> <tr><td>16</td><td>17</td><td>18</td><td>19</td><td>20</td><td>21</td><td>22</td></tr> <tr><td>23</td><td>24</td><td>25</td><td>26</td><td>27</td><td>28</td><td>29</td></tr> </table>	S	M	T	W	T	F	S							1	2	3	4	5	6	7	8	9	10	11	12	13	14	15	16	17	18	19	20	21	22	23	24	25	26	27	28	29			1	2	3
S	M	T	W	T	F	S																																																																																				
1	2	3	4	5	6																																																																																					
7	8	9	10	11	12	13																																																																																				
14	15	16	17	18	19	20																																																																																				
21	22	23	24	25	26	27																																																																																				
28	29	30	31																																																																																							
S	M	T	W	T	F	S																																																																																				
						1																																																																																				
2	3	4	5	6	7	8																																																																																				
9	10	11	12	13	14	15																																																																																				
16	17	18	19	20	21	22																																																																																				
23	24	25	26	27	28	29																																																																																				
Palm Sunday 4 Day Light Saving Time Begins	5	Passover 6 Council Meeting	7 Crime Watch Meeting 7:00 pm Planning & Zoning Bd.	8	Gallery Walk Good Friday 9	10 Easter Egg Hunt City of Gulfport SPRINGFEST																																																																																				
Easter 11 Sunrise Service Clymer Park	12	Historical Society Annual Meeting & Potluck Dinner 6:30 PM 13	14 Bd. of Adjustment	15	16	17 Saturday Stroll																																																																																				
18	19	20 Council Meeting	21	22	23	24																																																																																				
25	26	27	28	29	30	April 2004																																																																																				



In 1984 the Gulfport Historical Society moved into its new home.

May 2004

Gulfport Historical Society



H.T. KANES

Home of the Whole Belly Clams



WINGS
½ LB. BURGERS
CATFISH
REAL MASHED
POTATOES
SOUPS/ CHOWDERS

SIRLOINS
FRESH GROUPER
DAILY
SPECIALS

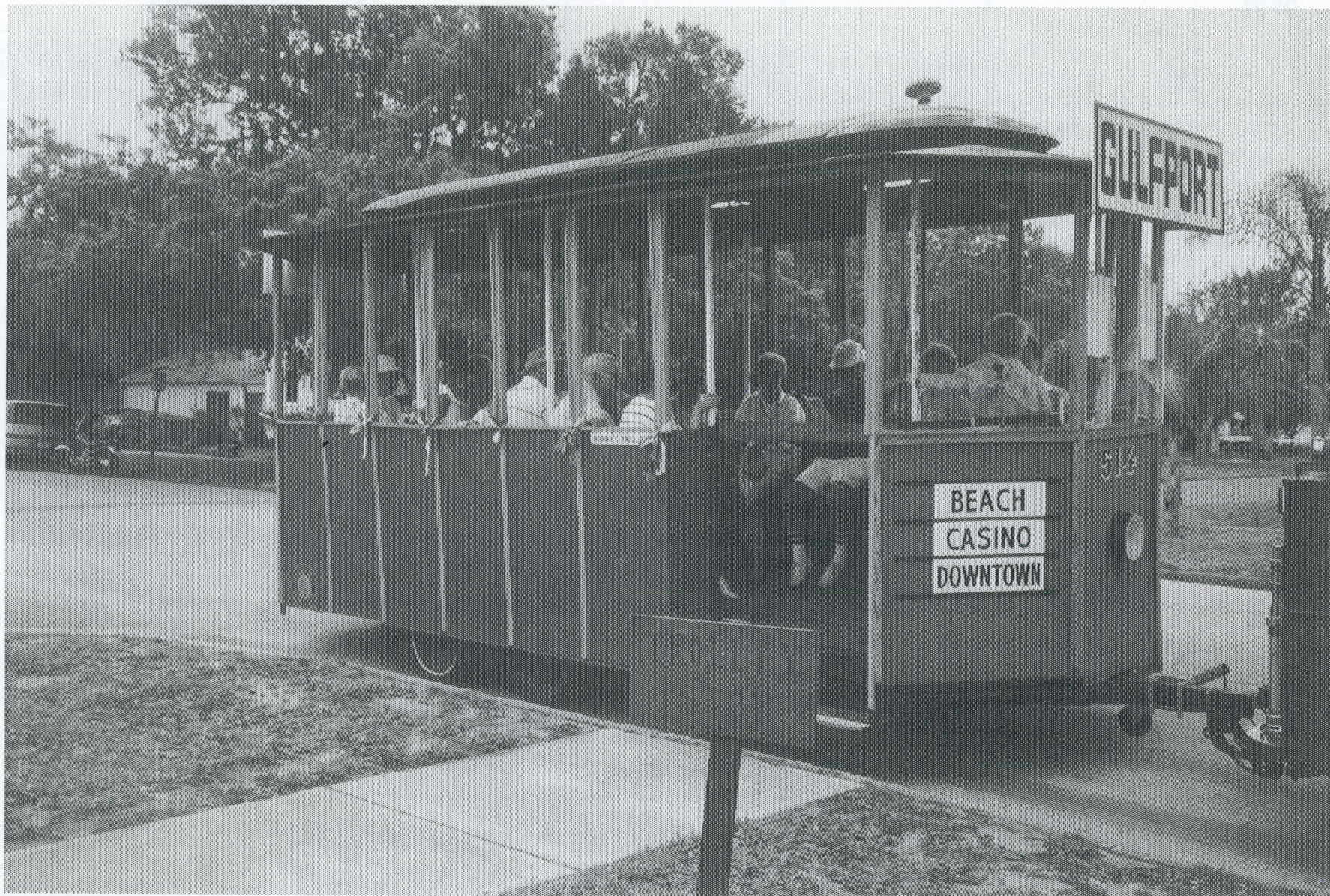
HAPPY HOUR
4:00 - 7:00 PM
SERVING BEER
WINE - COCKTAILS
FROZEN DRINKS

OPEN
MON.-THURS. 11-10
FRI.-SAT. 11-12

5501 Shore Blvd. On Gulfport Beach

347-6299

SUNDAY	MONDAY	TUESDAY	WEDNESDAY	THURSDAY	FRIDAY	SATURDAY																																																																																				
<p>APRIL</p> <table> <tr><td>S</td><td>M</td><td>T</td><td>W</td><td>T</td><td>F</td><td>S</td></tr> <tr><td></td><td></td><td></td><td>1</td><td>2</td><td>3</td><td></td></tr> <tr><td>4</td><td>5</td><td>6</td><td>7</td><td>8</td><td>9</td><td>10</td></tr> <tr><td>11</td><td>12</td><td>13</td><td>14</td><td>15</td><td>16</td><td>17</td></tr> <tr><td>18</td><td>19</td><td>20</td><td>21</td><td>22</td><td>23</td><td>24</td></tr> <tr><td>25</td><td>26</td><td>27</td><td>28</td><td>29</td><td>30</td><td></td></tr> </table>	S	M	T	W	T	F	S				1	2	3		4	5	6	7	8	9	10	11	12	13	14	15	16	17	18	19	20	21	22	23	24	25	26	27	28	29	30		<p>JUNE</p> <table> <tr><td>S</td><td>M</td><td>T</td><td>W</td><td>T</td><td>F</td><td>S</td></tr> <tr><td></td><td></td><td></td><td>1</td><td>2</td><td>3</td><td>4</td></tr> <tr><td>5</td><td>6</td><td>7</td><td>8</td><td>9</td><td>10</td><td>11</td></tr> <tr><td>12</td><td>13</td><td>14</td><td>15</td><td>16</td><td>17</td><td>18</td></tr> <tr><td>19</td><td>20</td><td>21</td><td>22</td><td>23</td><td>24</td><td>25</td></tr> <tr><td>26</td><td>27</td><td>28</td><td>29</td><td>30</td><td></td><td></td></tr> </table>	S	M	T	W	T	F	S				1	2	3	4	5	6	7	8	9	10	11	12	13	14	15	16	17	18	19	20	21	22	23	24	25	26	27	28	29	30							I
S	M	T	W	T	F	S																																																																																				
			1	2	3																																																																																					
4	5	6	7	8	9	10																																																																																				
11	12	13	14	15	16	17																																																																																				
18	19	20	21	22	23	24																																																																																				
25	26	27	28	29	30																																																																																					
S	M	T	W	T	F	S																																																																																				
			1	2	3	4																																																																																				
5	6	7	8	9	10	11																																																																																				
12	13	14	15	16	17	18																																																																																				
19	20	21	22	23	24	25																																																																																				
26	27	28	29	30																																																																																						
2	3	4	5	6	7	8																																																																																				
		Council Meeting	Crime Watch Meeting 7:00 pm Planning & Zoning		Gallery Walk																																																																																					
Mother's Day 9	10	11	12	13	14	15																																																																																				
			Bd. of Adjustment			Saturday Stroll																																																																																				
16	17	18	19	20	21	22																																																																																				
		Council Meeting																																																																																								
23	24	25	26	27	28	29																																																																																				
30	31 Memorial Day Observed City Hall Closed					May 2004																																																																																				



The Historical Society's first trolley tours used the trailer trolley built for the 1985 parade celebrating the 75th anniversary of the City of Gulfport's Incorporation.

June 2004

Gulfport Historical Society

Bug Man U-Do-It Supplies, Inc

**Professional Strength
Pest Control Products**

SAVE UP TO 70%

Now You Can Use What The Pros Use

5014 Gulfport Blvd
Gulfport, FL 33707
(727) 328-2847

Free Pest ID
And Advice



OUR BUSINESS IS CRAWLING

CUSTOM UPHOLSTERY & DRAPERIES BY

Habershon Upholstery

5125 GULPORT BLVD. SO. 321-7458

SUNDAY	MONDAY	TUESDAY	WEDNESDAY	THURSDAY	FRIDAY	SATURDAY																																																																																											
		1 Council meeting	2 Crime Watch Meeting 7:00 pm Planning & Zoning	3	4 Gallery Walk	5																																																																																											
6	7	8	9 Bd. of Adjustment	10	11	12																																																																																											
13	Flag Day 14	15	16	17	18	19																																																																																											
Father's Day 20	21	22 Council Meeting	23	24	25	26 Saturday Stroll																																																																																											
27	28	29	30	<div> MAY <table> <tr><td>S</td><td>M</td><td>T</td><td>W</td><td>T</td><td>F</td><td>S</td></tr> <tr><td></td><td></td><td></td><td></td><td></td><td></td><td>1</td></tr> <tr><td>2</td><td>3</td><td>4</td><td>5</td><td>6</td><td>7</td><td>8</td></tr> <tr><td>9</td><td>10</td><td>11</td><td>12</td><td>13</td><td>14</td><td>15</td></tr> <tr><td>16</td><td>17</td><td>18</td><td>19</td><td>20</td><td>21</td><td>22</td></tr> <tr><td>23</td><td>24</td><td>25</td><td>26</td><td>27</td><td>28</td><td>29</td></tr> <tr><td>30</td><td></td><td></td><td></td><td></td><td></td><td></td></tr> </table> </div>	S	M	T	W	T	F	S							1	2	3	4	5	6	7	8	9	10	11	12	13	14	15	16	17	18	19	20	21	22	23	24	25	26	27	28	29	30							<div> JULY <table> <tr><td>S</td><td>M</td><td>T</td><td>W</td><td>T</td><td>F</td><td>S</td></tr> <tr><td></td><td></td><td></td><td></td><td></td><td></td><td>1 2 3</td></tr> <tr><td>4</td><td>5</td><td>6</td><td>7</td><td>8</td><td>9</td><td>10</td></tr> <tr><td>11</td><td>12</td><td>13</td><td>14</td><td>15</td><td>16</td><td>17</td></tr> <tr><td>18</td><td>19</td><td>20</td><td>21</td><td>22</td><td>23</td><td>24</td></tr> <tr><td>25</td><td>26</td><td>27</td><td>28</td><td>29</td><td>30</td><td>31</td></tr> </table> </div>	S	M	T	W	T	F	S							1 2 3	4	5	6	7	8	9	10	11	12	13	14	15	16	17	18	19	20	21	22	23	24	25	26	27	28	29	30	31	June 2004
S	M	T	W	T	F	S																																																																																											
						1																																																																																											
2	3	4	5	6	7	8																																																																																											
9	10	11	12	13	14	15																																																																																											
16	17	18	19	20	21	22																																																																																											
23	24	25	26	27	28	29																																																																																											
30																																																																																																	
S	M	T	W	T	F	S																																																																																											
						1 2 3																																																																																											
4	5	6	7	8	9	10																																																																																											
11	12	13	14	15	16	17																																																																																											
18	19	20	21	22	23	24																																																																																											
25	26	27	28	29	30	31																																																																																											



In 1987 the Garden and Bird Club donated plants for the beginning of our landscaping. Dick Bullis and Keith Hickman provided the labor.

Sally Gillogly

July 2004

Gulfport Historical Society



**SAL'S TOWN SHORE
RESTAURANT**

Homestyle Cooking

347-5788

Breakfast Served All Day

Mon.-Fri. 7:00-2:00

Sat.-Sun. 7:00-1:00

Town Shore Plaza

5808 28th Ave. S.

Gulfport, FL 33707

GULFPORT BEACH BAZAAR

**VARIETY STORE & U.S. POST OFFICE
3115 BEACH BOULEVARD SOUTH**

381-8548

MON.-THURS. 9-5 FRI. 9-9 SAT. 9-5 SUN. 10-5

SUNDAY	MONDAY	TUESDAY	WEDNESDAY	THURSDAY	FRIDAY	SATURDAY																																																																																				
<p>JUNE</p> <table> <tr><td>S</td><td>M</td><td>T</td><td>W</td><td>T</td><td>F</td><td>S</td></tr> <tr><td></td><td>1</td><td>2</td><td>3</td><td>4</td><td>5</td><td></td></tr> <tr><td>6</td><td>7</td><td>8</td><td>9</td><td>10</td><td>11</td><td>12</td></tr> <tr><td>13</td><td>14</td><td>15</td><td>16</td><td>17</td><td>18</td><td>19</td></tr> <tr><td>20</td><td>21</td><td>22</td><td>23</td><td>24</td><td>25</td><td>26</td></tr> <tr><td>27</td><td>28</td><td>29</td><td>30</td><td></td><td></td><td></td></tr> </table>	S	M	T	W	T	F	S		1	2	3	4	5		6	7	8	9	10	11	12	13	14	15	16	17	18	19	20	21	22	23	24	25	26	27	28	29	30				<p>AUGUST</p> <table> <tr><td>S</td><td>M</td><td>T</td><td>W</td><td>T</td><td>F</td><td>S</td></tr> <tr><td>1</td><td>2</td><td>3</td><td>4</td><td>5</td><td>6</td><td>7</td></tr> <tr><td>8</td><td>9</td><td>10</td><td>11</td><td>12</td><td>13</td><td>14</td></tr> <tr><td>15</td><td>16</td><td>17</td><td>18</td><td>19</td><td>20</td><td>21</td></tr> <tr><td>22</td><td>23</td><td>24</td><td>25</td><td>26</td><td>27</td><td>28</td></tr> <tr><td>29</td><td>30</td><td>31</td><td></td><td></td><td></td><td></td></tr> </table>	S	M	T	W	T	F	S	1	2	3	4	5	6	7	8	9	10	11	12	13	14	15	16	17	18	19	20	21	22	23	24	25	26	27	28	29	30	31							1	2	3
S	M	T	W	T	F	S																																																																																				
	1	2	3	4	5																																																																																					
6	7	8	9	10	11	12																																																																																				
13	14	15	16	17	18	19																																																																																				
20	21	22	23	24	25	26																																																																																				
27	28	29	30																																																																																							
S	M	T	W	T	F	S																																																																																				
1	2	3	4	5	6	7																																																																																				
8	9	10	11	12	13	14																																																																																				
15	16	17	18	19	20	21																																																																																				
22	23	24	25	26	27	28																																																																																				
29	30	31																																																																																								
<p>Celebrate the 4th Parade Fire Works</p> <p>4</p>	<p>5</p> <p>City Hall Closed</p>	<p>6</p> <p>Council Meeting</p>	<p>7</p> <p>Crime Watch Meeting 7:00pm Planning & Zoning</p>	<p>8</p>	<p>9</p> <p>Gallery Walk</p>	<p>10</p>																																																																																				
<p>11</p>	<p>12</p>	<p>13</p>	<p>14</p> <p>Bd. of Adjustment</p>	<p>15</p>	<p>16</p>	<p>17</p> <p>Saturday Stroll</p>																																																																																				
<p>18</p>	<p>19</p>	<p>20</p> <p>Council Meeting</p>	<p>21</p>	<p>22</p>	<p>23</p>	<p>24</p>																																																																																				
<p>25</p>	<p>26</p>	<p>27</p>	<p>28</p>	<p>29</p>	<p>30</p>	<p>31</p> <p>July 2004</p>																																																																																				



Over the past 20 years the collection has grown through donations from the community.

August 2004

Gulfport Historical Society



JOHN TONKIN

AMERICAN ROOFING CO.

TELEPHONE
347-9295

JOHNS - MANVILLE
QUALITY BUILDING PRODUCTS



Gateway To The Gulf
REALTY

5314 Gulfport Blvd. S.
Gulfport, FL 33707

Office: 727-328-2700
Fax: 727-328-2702
Cell: 727-656-2701

E-mail: GatewaytotheGulf@hotmail.com
www.GatewaytotheGulfRealty.com



Maddy Guenther
Broker



SUNDAY	MONDAY	TUESDAY	WEDNESDAY	THURSDAY	FRIDAY	SATURDAY																																																																																				
1	2	3 National Night Out Against Crime Clymer Park 6:30 - 9:30 pm Council Meeting	4 Crime Watch Meeting 7:00 pm Planning & Zoning	5	6 Gallery Walk	7																																																																																				
8	9	10	11 Bd. of Adjustment	12	13	14																																																																																				
15	16	17 Council Meeting	18	19	20	21 Saturday Stroll																																																																																				
22	23	24	25	26	27	28																																																																																				
29	30	31	<div>JULY</div> <table> <tr><td>S</td><td>M</td><td>T</td><td>W</td><td>T</td><td>F</td><td>S</td></tr> <tr><td></td><td></td><td></td><td>1</td><td>2</td><td>3</td><td></td></tr> <tr><td>4</td><td>5</td><td>6</td><td>7</td><td>8</td><td>9</td><td>10</td></tr> <tr><td>11</td><td>12</td><td>13</td><td>14</td><td>15</td><td>16</td><td>17</td></tr> <tr><td>18</td><td>19</td><td>20</td><td>21</td><td>22</td><td>23</td><td>24</td></tr> <tr><td>25</td><td>26</td><td>27</td><td>28</td><td>29</td><td>30</td><td>31</td></tr> </table>		S	M	T	W	T	F	S				1	2	3		4	5	6	7	8	9	10	11	12	13	14	15	16	17	18	19	20	21	22	23	24	25	26	27	28	29	30	31	<div>SEPTEMBER</div> <table> <tr><td>S</td><td>M</td><td>T</td><td>W</td><td>T</td><td>F</td><td>S</td></tr> <tr><td></td><td></td><td></td><td>1</td><td>2</td><td>3</td><td>4</td></tr> <tr><td>5</td><td>6</td><td>7</td><td>8</td><td>9</td><td>10</td><td>11</td></tr> <tr><td>12</td><td>13</td><td>14</td><td>15</td><td>16</td><td>17</td><td>18</td></tr> <tr><td>19</td><td>20</td><td>21</td><td>22</td><td>23</td><td>24</td><td>25</td></tr> <tr><td>26</td><td>27</td><td>28</td><td>29</td><td>30</td><td></td><td></td></tr> </table>	S	M	T	W	T	F	S				1	2	3	4	5	6	7	8	9	10	11	12	13	14	15	16	17	18	19	20	21	22	23	24	25	26	27	28	29	30			August 2004
S	M	T	W	T	F	S																																																																																				
			1	2	3																																																																																					
4	5	6	7	8	9	10																																																																																				
11	12	13	14	15	16	17																																																																																				
18	19	20	21	22	23	24																																																																																				
25	26	27	28	29	30	31																																																																																				
S	M	T	W	T	F	S																																																																																				
			1	2	3	4																																																																																				
5	6	7	8	9	10	11																																																																																				
12	13	14	15	16	17	18																																																																																				
19	20	21	22	23	24	25																																																																																				
26	27	28	29	30																																																																																						



In 1995 the porch was replaced with donated labor.

September 2004

Gulfport Historical Society



GULFPORT LIONS

4630 TIFTON DRIVE SOUTH • GULFPORT, FL 33707

MEETINGS HELD
2nd AND 4th TUESDAY
7:00 P.M.

SUNDAY	MONDAY	TUESDAY	WEDNESDAY	THURSDAY	FRIDAY	SATURDAY																																																																																																		
<p>AUGUST</p> <table> <tr><td>S</td><td>M</td><td>T</td><td>W</td><td>T</td><td>F</td><td>S</td></tr> <tr><td>1</td><td>2</td><td>3</td><td>4</td><td>5</td><td>6</td><td>7</td></tr> <tr><td>8</td><td>9</td><td>10</td><td>11</td><td>12</td><td>13</td><td>14</td></tr> <tr><td>15</td><td>16</td><td>17</td><td>18</td><td>19</td><td>20</td><td>21</td></tr> <tr><td>22</td><td>23</td><td>24</td><td>25</td><td>26</td><td>27</td><td>28</td></tr> <tr><td>29</td><td>30</td><td>31</td><td></td><td></td><td></td><td></td></tr> </table>	S	M	T	W	T	F	S	1	2	3	4	5	6	7	8	9	10	11	12	13	14	15	16	17	18	19	20	21	22	23	24	25	26	27	28	29	30	31					<p>OCTOBER</p> <table> <tr><td>S</td><td>M</td><td>T</td><td>W</td><td>T</td><td>F</td><td>S</td></tr> <tr><td></td><td></td><td></td><td></td><td></td><td></td><td>1</td></tr> <tr><td></td><td></td><td></td><td></td><td></td><td></td><td>2</td></tr> <tr><td></td><td>3</td><td>4</td><td>5</td><td>6</td><td>7</td><td>8</td></tr> <tr><td></td><td>9</td><td>10</td><td>11</td><td>12</td><td>13</td><td>14</td></tr> <tr><td></td><td>15</td><td>16</td><td>17</td><td>18</td><td>19</td><td>20</td></tr> <tr><td></td><td>21</td><td>22</td><td>23</td><td>24</td><td>25</td><td>26</td></tr> <tr><td></td><td>27</td><td>28</td><td>29</td><td>30</td><td>31</td><td></td></tr> </table>	S	M	T	W	T	F	S							1							2		3	4	5	6	7	8		9	10	11	12	13	14		15	16	17	18	19	20		21	22	23	24	25	26		27	28	29	30	31			I	2	3	4
S	M	T	W	T	F	S																																																																																																		
1	2	3	4	5	6	7																																																																																																		
8	9	10	11	12	13	14																																																																																																		
15	16	17	18	19	20	21																																																																																																		
22	23	24	25	26	27	28																																																																																																		
29	30	31																																																																																																						
S	M	T	W	T	F	S																																																																																																		
						1																																																																																																		
						2																																																																																																		
	3	4	5	6	7	8																																																																																																		
	9	10	11	12	13	14																																																																																																		
	15	16	17	18	19	20																																																																																																		
	21	22	23	24	25	26																																																																																																		
	27	28	29	30	31																																																																																																			
			Crime Watch Meeting 7:00 pm Planning & Zoning		Gallery Walk	Gulfport Gecko Festival FIREWORKS!																																																																																																		
5	Labor Day 6	7	8	9	10	11																																																																																																		
	Lion's Fish Fry 12 - 4 pm City Hall Closed	Council Meeting	Bd. of Adjustment																																																																																																					
12	13	14	15	Rosh Hashanah 16	17	18																																																																																																		
		Historical Society Meeting 7:00 PM				Clam Bayou Cleanup Saturday Stroll																																																																																																		
19	20	21	22	23	24	Yom Kippur 25																																																																																																		
		Council Meeting																																																																																																						
26	27	28	29	30		Sept. 2004																																																																																																		



PRISCILLA



TARA



EMILY



COLLEEN



JIM



CATHERINE, FRANCES, AND MARY

Over the years many people have given their time and talents to benefit the museum.

October 2004

Gulfport Historical Society

KEITH A. LUCAS
Funeral Director Manager

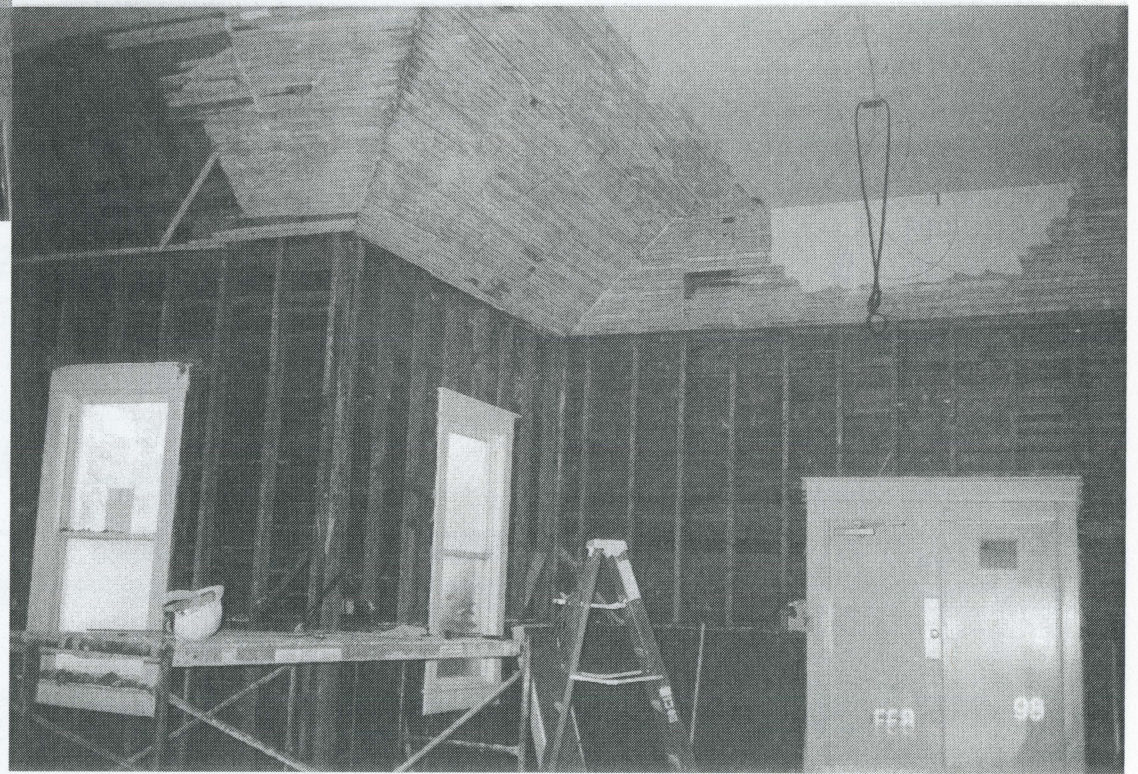
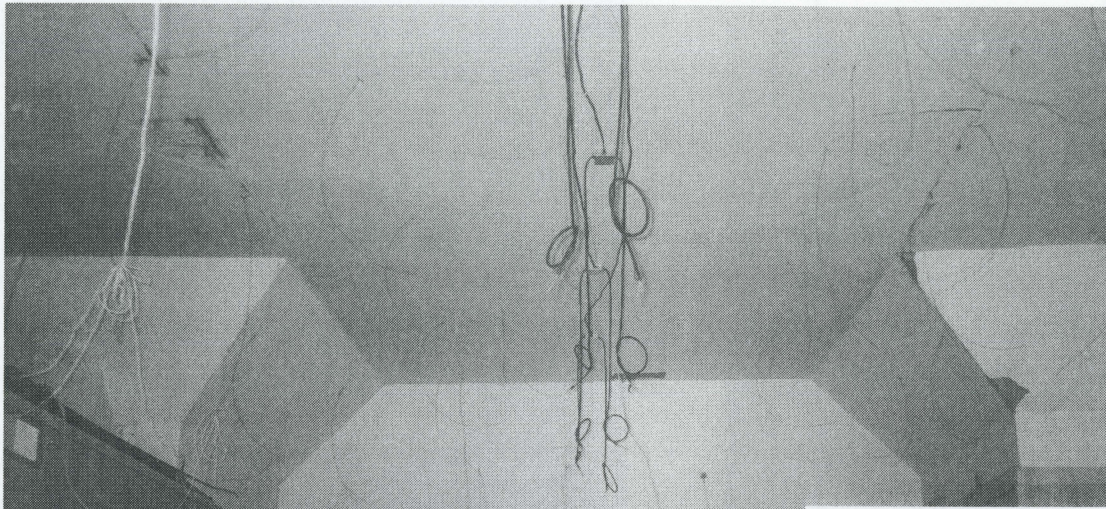
5601 Gulfport Blvd. S., Gulfport, FL 33707
(727) 347-5521 • Fax (727) 347-4925

GULFPORT MEMORIAL

FUNERAL HOME AND CREMATION CENTER

Offering The Simplicity Plan®

SUNDAY	MONDAY	TUESDAY	WEDNESDAY	THURSDAY	FRIDAY	SATURDAY																																																																																				
<p>SEPTEMBER</p> <table> <tr><td>S</td><td>M</td><td>T</td><td>W</td><td>T</td><td>F</td><td>S</td></tr> <tr><td></td><td></td><td></td><td>1</td><td>2</td><td>3</td><td>4</td></tr> <tr><td>5</td><td>6</td><td>7</td><td>8</td><td>9</td><td>10</td><td>11</td></tr> <tr><td>12</td><td>13</td><td>14</td><td>15</td><td>16</td><td>17</td><td>18</td></tr> <tr><td>19</td><td>20</td><td>21</td><td>22</td><td>23</td><td>24</td><td>25</td></tr> <tr><td>26</td><td>27</td><td>28</td><td>29</td><td>30</td><td></td><td></td></tr> </table>	S	M	T	W	T	F	S				1	2	3	4	5	6	7	8	9	10	11	12	13	14	15	16	17	18	19	20	21	22	23	24	25	26	27	28	29	30			<p>NOVEMBER</p> <table> <tr><td>S</td><td>M</td><td>T</td><td>W</td><td>T</td><td>F</td><td>S</td></tr> <tr><td></td><td>1</td><td>2</td><td>3</td><td>4</td><td>5</td><td>6</td></tr> <tr><td>7</td><td>8</td><td>9</td><td>10</td><td>11</td><td>12</td><td>13</td></tr> <tr><td>14</td><td>15</td><td>16</td><td>17</td><td>18</td><td>19</td><td>20</td></tr> <tr><td>21</td><td>22</td><td>23</td><td>24</td><td>25</td><td>26</td><td>27</td></tr> <tr><td>28</td><td>29</td><td>30</td><td></td><td></td><td></td><td></td></tr> </table>	S	M	T	W	T	F	S		1	2	3	4	5	6	7	8	9	10	11	12	13	14	15	16	17	18	19	20	21	22	23	24	25	26	27	28	29	30								1	2
S	M	T	W	T	F	S																																																																																				
			1	2	3	4																																																																																				
5	6	7	8	9	10	11																																																																																				
12	13	14	15	16	17	18																																																																																				
19	20	21	22	23	24	25																																																																																				
26	27	28	29	30																																																																																						
S	M	T	W	T	F	S																																																																																				
	1	2	3	4	5	6																																																																																				
7	8	9	10	11	12	13																																																																																				
14	15	16	17	18	19	20																																																																																				
21	22	23	24	25	26	27																																																																																				
28	29	30																																																																																								
3	4	5	6	7	8	9																																																																																				
		Council Meeting	Crime Watch Meeting 7:00 pm Planning & Zoning		Gallery Walk	Lion's Spaghetti Dinner																																																																																				
10	11	12	13	14	15	16																																																																																				
			Bd. of Adjustment	Octoberfest	Octoberfest	Octoberfest Saturday Stroll																																																																																				
17	18	19	20	21	22	23																																																																																				
Octoberfest		Council Meeting																																																																																								
24	25	26	27	28	29	30																																																																																				
31 Day light Saving Ends Halloween						October 2004																																																																																				



In December 1997 the humidity from a record rainfall caused the original ceiling plaster to fall, bringing down the drop ceiling. After stripping the interior back to the original heart of pine walls, the rebuilding began, recreating the original appearance of the old church building.

November 2004

Gulfport Historical Society

^{the}Gabber

Since 1968

Your Free Newspaper

1419 49th Street South Gulfport, FL 33707
321-6965

Fax: 327-7830

SUNDAY	MONDAY	TUESDAY	WEDNESDAY	THURSDAY	FRIDAY	SATURDAY																																																																																																		
	1	2	3	4	5	6 Lion's Pancake Breakfast 7 - 12 Antique Car Show																																																																																																		
7 Antique Car Show	8	9 Council Meeting Historical Society Meeting 7:00 PM	10 Crime Watch Meeting 7:00 pm Planning & Zoning Bd. of Adjustment	11 Veteran's Day City Hall Closed	12 Antique Car Show Gallery Walk	13																																																																																																		
14	15	16 Council Meeting	17	18	19	20 Saturday Stroll																																																																																																		
21	22	23	24	25 Thanksgiving City Hall Closed	26 City Hall Closed	27																																																																																																		
28	29	30		<p>OCTOBER</p> <table> <tr><td>S</td><td>M</td><td>T</td><td>W</td><td>T</td><td>F</td><td>S</td></tr> <tr><td></td><td></td><td></td><td></td><td></td><td>1</td><td>2</td></tr> <tr><td>3</td><td>4</td><td>5</td><td>6</td><td>7</td><td>8</td><td>9</td></tr> <tr><td>10</td><td>11</td><td>12</td><td>13</td><td>14</td><td>15</td><td>16</td></tr> <tr><td>17</td><td>18</td><td>19</td><td>20</td><td>21</td><td>22</td><td>23</td></tr> <tr><td>24</td><td>25</td><td>26</td><td>27</td><td>28</td><td>29</td><td>30</td></tr> <tr><td>31</td><td></td><td></td><td></td><td></td><td></td><td></td></tr> </table>	S	M	T	W	T	F	S						1	2	3	4	5	6	7	8	9	10	11	12	13	14	15	16	17	18	19	20	21	22	23	24	25	26	27	28	29	30	31							<p>DECEMBER</p> <table> <tr><td>S</td><td>M</td><td>T</td><td>W</td><td>T</td><td>F</td><td>S</td></tr> <tr><td></td><td></td><td></td><td></td><td></td><td>1</td><td>2</td></tr> <tr><td>3</td><td>4</td><td>5</td><td>6</td><td>7</td><td>8</td><td>9</td></tr> <tr><td>10</td><td>11</td><td>12</td><td>13</td><td>14</td><td>15</td><td>16</td></tr> <tr><td>17</td><td>18</td><td>19</td><td>20</td><td>21</td><td>22</td><td>23</td></tr> <tr><td>24</td><td>25</td><td>26</td><td>27</td><td>28</td><td>29</td><td>30</td></tr> <tr><td>31</td><td></td><td></td><td></td><td></td><td></td><td></td></tr> </table>	S	M	T	W	T	F	S						1	2	3	4	5	6	7	8	9	10	11	12	13	14	15	16	17	18	19	20	21	22	23	24	25	26	27	28	29	30	31							Nov. 2004
S	M	T	W	T	F	S																																																																																																		
					1	2																																																																																																		
3	4	5	6	7	8	9																																																																																																		
10	11	12	13	14	15	16																																																																																																		
17	18	19	20	21	22	23																																																																																																		
24	25	26	27	28	29	30																																																																																																		
31																																																																																																								
S	M	T	W	T	F	S																																																																																																		
					1	2																																																																																																		
3	4	5	6	7	8	9																																																																																																		
10	11	12	13	14	15	16																																																																																																		
17	18	19	20	21	22	23																																																																																																		
24	25	26	27	28	29	30																																																																																																		
31																																																																																																								



The museum interior today reflects life in Gulfport during the first half of the 20th Century.

December 2004

Gulfport Historical Society



Bay Breeze

BEAUTY SALON REDKEN

3117 Beach Blvd. 343-7003

SPECIALIZING IN
SOFT, CURLY OR BODY
PERMANENTS

HOURS: 9-5 TUES. - SAT.

Nails By Carl - Acrylic, Pedicures and Manicures

SUNDAY	MONDAY	TUESDAY	WEDNESDAY	THURSDAY	FRIDAY	SATURDAY
NOVEMBER S M T W T F S 1 2 3 4 5 6 7 8 9 10 11 12 13 14 15 16 17 18 19 20 21 22 23 24 25 26 27 28 29 30			1 Crime Watch Meeting 7:00 pm Planning & Zoning	2	3 Gallery Walk	4 Lion's Pancake Breakfast 7 - 12
5	6 City Tree Lighting Clymer Park	7 Council Meeting	8 <i>Hanukkah</i> Lion's Poinsettia Sale Bd. of Adjustment	9 Lion's Poinsettia Sale	10 Lion's Carols By Candlelight	11
12	13	14 Historical Society Meeting 7:00 PM	15	16	17	18 Saturday Stroll
19	20	21 Council Meeting	22	23	24 City Hall Closed	25 <i>Christmas Day</i>
26 <i>Kwanzaa</i>	27	28	29	30	31 <i>New Year's Eve</i> City Hall Closed	

Clubs and Organizations

<u>LOCAL ORGANIZATIONS</u>	<u>MEETING DATES/TIMES</u>	<u>MEETING LOCATION</u>	<u>ADDRESS ZIP CODE</u>	<u>PHONE</u>
Andy Anderson Post #125	3rd Thursday - 7:00 pm	American Legion Hall	6440 5th Ave. S., 33707	347-6085
Andy Anderson Post #125 Auxiliary	2nd Tuesday - 7:30 pm	American Legion Hall	6440 5th Ave. S., 33707	347-6085
Son's of American Legion	Last Monday - 7:00 pm	American Legion Hall	6440 5th Ave. S., 33707	347-6085
Boca Ciega Yacht Club	3rd Friday - 8:00 pm	Yacht Club	4600 Tifton Dr. S., 33711	321-7295
Coast Guard Auxiliary Flotilla 7 -16	1st & 3rd Wednesday 7:30 pm	Flotilla Base Clam Bayou Park	3120 Miriam St. S., 33711	345-6577 821-2582
Friends of the Gulfport Public Library, Inc.	Call for day & time Oct. through April	Friends' Room Gulfport Library	5501 28th Ave. S., 33707	327-3321
Gulfport Chamber of Commerce	Mixers-To Be Announced Board - 3rd Thursday 8:00 am	To Be Announced Chamber Office	2808 58 St. S. P. O. Box 5212, 33737	344-3711
Gulfport Community Players, Inc.	To Be Announced	Rehearsal Hall	To Be Announced	322-0316
Gulfport Garden & Bird Club	2nd Thursday Oct/May 1 pm	Senior Center	To Be Announced	321-6282
GULFPORT HISTORICAL SOCIETY, INC.	2nd Tuesday 7:30 pm Sept. through April	HISTORICAL MUSEUM Mailing Address	5301 28th Ave. S., 33707 P. O. Box 5152, 33737	327-0505 343-4398

Gulfport Lion's Club	2nd & 4th Tuesday 7:00 pm	Gulfport Lion's Center	4630 Tifton Dr. S., 33711	321-5717
Gulfport Softball Boomerangs	Tuesday, Thursday & Saturday 8:00 am - 12 noon	Hoyt Field Age 55+ (everybody plays)	56th St. & 23rd Ave. S., 33707	360-5075 360-5757
Keep Pinellas Cities Beautiful, Inc.	Clam Bayou Clean-Up 3rd week-end March & September	Call for Information	Charlie Alaimo, Rep.	321-5745
Knights of Columbus Pius XII Council 5131	4th Monday 7:00 pm	Holy Name Social Hall	58th St. & 15 Ave. S., 33707	347-5227
Knitting & Crocheting Club	Monday 8:30 am year round	Senior Center	5501 27th Ave. S., 33707	344-4443
Little League Baseball	March-June/Sept.-Nov.			327-7383
T-Ball, Minor Ball, Major Ball	Ages 5-16 Boys/Girls	Little League Field	Tangerine & 55th St. S., 33707	327-7383
Senior Ball, Big League Ball, Softball	To Be Announced	Hoyt Field	56th St. & 23rd Ave. S., 33707	327-7383
Optimist Club	1st & 3rd Monday 7:00 pm	Senior Center	5501 27th Ave. S., 33707	343-4398
Boy Scouts / Cub Scouts Of America	Thursday 7:00 pm year round Monday 5:00 pm year round	Scout Hall	5315 28th Ave. S., 33707	343-4398
Scouts - Explorers				
Fire Explorers	Sunday 6:00 pm	Fire Station	5314 23rd Ave. S., 33707	893-1062
Police Explorers	Monday 7:30 pm	Call Sgt. Falconeri	2401 53rd St. So. 33707	893-1030
Women's Club of Gulfport GFWC & FFWC Affiliated	2nd Wednesday 12 noon October through May	Town Shores Club House	2526 Premier Dr. S., 33707	347-6831

Compiled by Jo Arras

Places of Worship

Church of Christ
901 - 49th Street South
321-2721

Kingdom Hall of Jehovah's Witnesses
1219 - 53rd Street South
321-3862

Church of Jesus Christ of Latter-Day Saints
5435 Gulfport Boulevard
322-5650

Gulfport Presbyterian Church
5313 - 27th Avenue South
321-8086

Congregation Beth Sholom
1844 - 54th Street South
321-3380

Gulfport Church of the Nazarene
1000 - 55th Street South
321-1598

Eglise Baptiste Nouvelle Jerusalem Church
5801 - 9th Avenue South
345-8228

Most Holy Name of Jesus Parish
5806 - 15th Avenue South
347-9989

First United Methodist Church
2728 - 53rd Street South
321-3620

NOTES

2004 Calendar Theme: 20th Anniversary of Gulfport Historical Museum

Published by the Gulfport Historical Society, Inc. (A not-for-profit corporation) - Judy Ryerson, Editor

FROM: _____

TO: _____

