

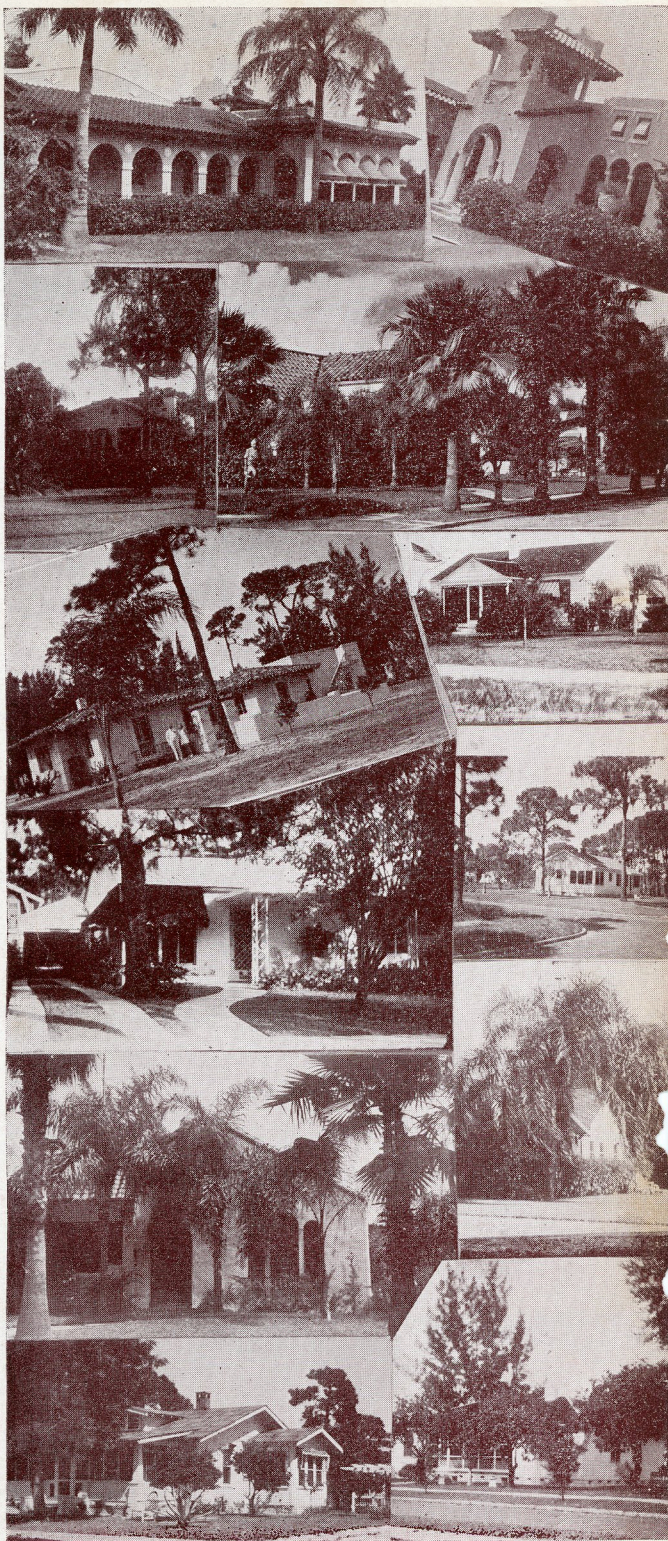
Gulfport

FLO RIDA

DINELLAS COUNTY

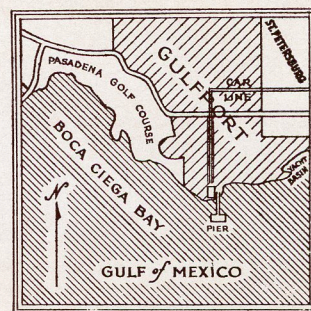


*Gateway to the
Gulf of Mexico*



BRIEF HISTORY

The town of Gulfport had its beginning in the year 1868 when one James Barnett chose this location, overlooking beautiful Boca Ciega Bay, for his home, the first home to be built on the lower end of the Pinellas peninsula. The name originally chosen for the settlement was Disston City but later it was called Bonafacio. As time passed the name was again changed, this time to Veteran City. This was at the time that Captain J. F. Chase arrived in the community to establish a home for Civil War veterans.



With the turn of the century, however, the Town Council, realizing that Veteran City did not properly name a growing community, changed it to Gulfport.

The St. Petersburg and Gulf Railway was built in 1904 from St. Petersburg to Gulfport, a distance of six miles. This is now a part of the St. Petersburg municipal railway system. Much credit for Gulfport's carefully planned, parkways, streets, and public parks goes to the promoters of the original railroad.



MODERN GULFPORT'S ADVANTAGES

Gulfport is unsurpassed in its location. It has one of the finest climates in America, tempered by the Gulf stream in winter and cooled by the Gulf breeze in summer. Beautiful sunsets the year 'round may be seen from the water's edge.

Gulfport soil produces with little aid beautiful tropical flowers, delicious citrus fruit, and a variety of decorative trees. The jacaranda, bougainvillea, hibiscus, camellia japonica, gardenia, royal poincianna, oleander, poinsettia, banana, guava, and avocado grow in abundance. In the late winter, the flame vine produces one of the most beautiful masses of solid color one could ever expect to behold. Flowers and vegetables grow in the open all year.

Gulfport is fortunate in having air entirely free from smoke and dust. The air and the tempered climate are beneficial to sufferers from catarrh, asthma, bronchitis, neuritis, and rheumatism.

The town offers many types of entertainment and recreation: a bathing beach that is popular the year 'round, numerous shuffleboard courts, tennis, badminton, and a dance hall capable of accommodating 500 couples.

Gulfport is accessible to two excellent golf courses. One course within the confines of the town was for many years recognized as the finest on the West Coast. Walter Hagen made the Pasadena Country Club and Golf Course famous as its president and active professional. Lakewood Country Club is nearby and is easily accessible.

Gulfport's Yacht Club provides its own private basin and anchorage particularly planned for small craft.

Gulfport has an excellent library, and on its shelves may be found many of the most recently published books.

The town has a progressive weekly newspaper that is published every Friday. It also has a modern printing plant, and an up-to-date photographic studio.

Gulfport has excellent schools. The Disston Junior High School is housed in an attractive building among the pines and palm trees. The Elementary school building is beautiful and spacious, surrounded by tropical flowers and climbing vines.

The Florida Military Academy is well known for its beauty, its Mediterranean style, and Spanish architecture. The tower is a replica of the golden tower of Seville; the tile roof is imported from Spain. The school has gained recognition in the educational world for its splendid training and extra-curricular activities.

Gulfport enjoys an unusually low fire insurance rate due to the quality and efficiency of exceptional fire fighting equipment.

Gulfport particularly offers every inducement and advantage to the man with moderate means who seeks a more favored climate and a complete change of surroundings. He will find here a cooperative spirit and a friendly hand of welcome.

Gulfport is no less friendly to the man who is fortunate enough to own his own yacht and who comes here for rest and recreation, and who may seek the wider outlet for his interests and time.

St. Petersburg, within a few minutes by automobile or street car, offers every advantage of a modern city; splendid banking facilities, all year brokerage houses, its more commodious Shrine and Yacht clubs, and generally the stepped-up tempo of the larger city.

Gulfport's town limit to the east and north join that of the city of St. Petersburg. The distance from the northernmost town limit to the post-office in the heart of down-town St. Petersburg measures exactly $4\frac{1}{2}$ miles.

Gulfport has fine, friendly, hospitable and cooperative people who are working together to create a progressive, worth-while town to which its citizens may point with pride. The accomplishments within the past few years are notable. The unusual growth is frequently subject for comment. Fifty per cent of the homes of Gulfport have been built within the past seven years.

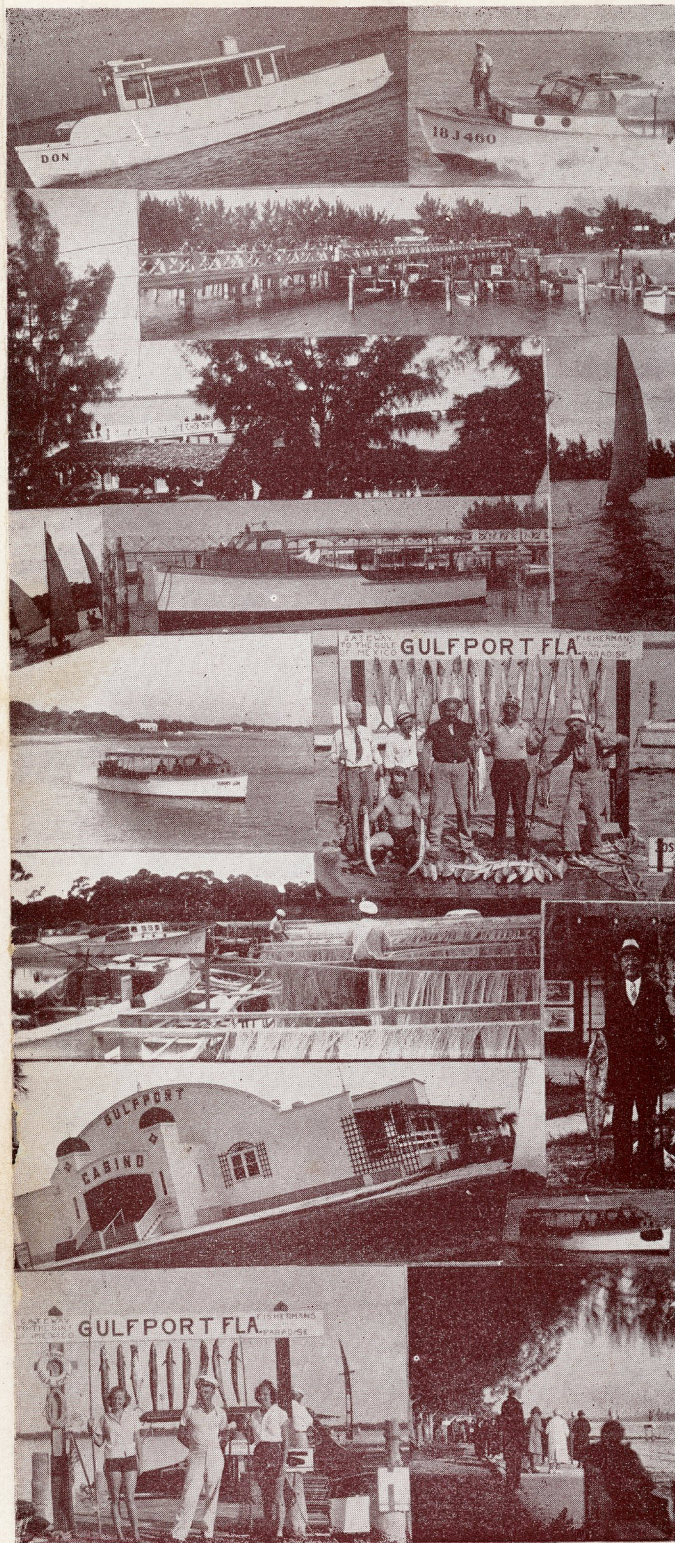
Gulfport is a modern, up-to-the-minute, rapidly advancing town, yet its property values are still conservative, its assessments and tax rate equable; the custom in the past has been to appraise improved property at approximately 60% of the sale price in normal times and under average conditions. The rate for municipal taxing is 16 mills; with Homestead Exemption the rate is 7 mills. The county and school tax carries a rate of 13.16 mills and with Homestead Exemption carries a rate of 2.36 mills. There is no personal property tax for the Town of Gulfport.

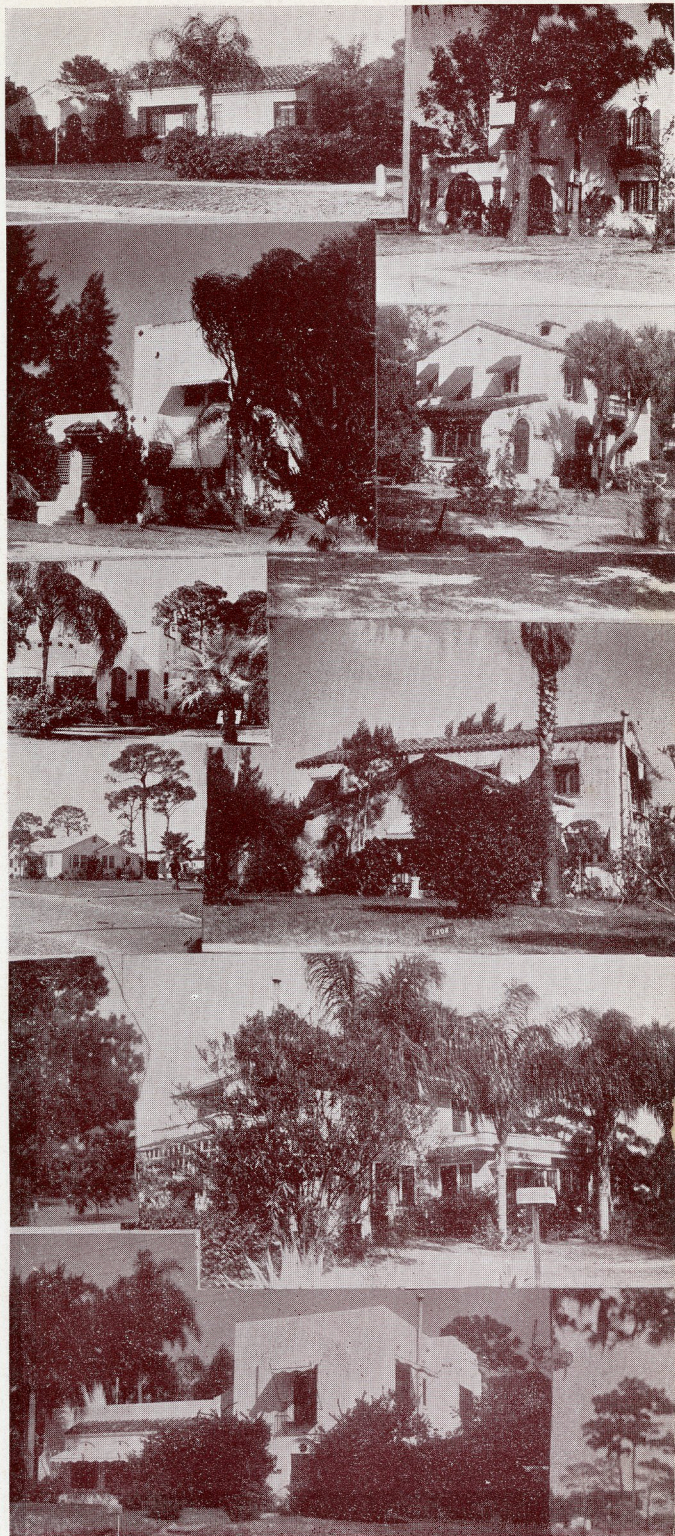
Gulfport has 19 miles of brick-paved streets, two miles of macadam, and seven and a half miles of shell paving; there are approximately 30 miles of sidewalks. The avenues and streets are generally wide and well-drained, with many parkways which add to the beauty of the town.

A walk along Gulfport's attractive waterfront and out on its splendid pier is an attraction to visitors and residents alike. The acrobatics of the porpoises that appear daily and the antics of the pelicans and numerous other waterfowl attract much attention. These sights may be viewed from the benches under the thatched-roof shelters along the water's edge, or from one's own automobile which may be driven to within a few feet of the water.

Gulfport has a number of active clubs, affording both entertainment and instruction. The Shuffleboard club, with its attractive clubhouse, is the center of activity during the season for all who enjoy outdoor sports.

Gulfport is the home of the Gulfport Fish and Game Association, a sportsman's club that counts members from





many states. It owns its own clubhouse which overlooks the waters of Boca Ciega Bay. The club is open to all winter visitors who may become members for a small fee. Organized by experienced fishermen who know when, where, and how to catch fish, the club's primary aim is to pass this information on to neighbors and newcomers. The club has become a center of interest for all visiting sportsmen who enjoy the pleasures of fishing and hunting. The latter sport-lovers will find that the county has excellent cover for birds and small game. The hunter may shoot over his favorite dog or follow on horseback.

The Community club meets once each week, its function being to provide entertainment. The Garden and Bird club has two meetings each month. One meeting is devoted to practical help in regard to the growing of flowers, shrubbery, trees, lawns and vegetables. The second meeting each month is devoted to the study of birds.

The Woman's club meets once a month during the winter; the programs are interesting and educational.

The Home Demonstration club meets twice a month throughout the year. The needs of the homemaker are practically demonstrated. Sewing, canning, cooking, and care of furniture and household machinery are carefully covered.

The W. C. T. U. has an active organization.

The American Legion Post, No. 125, Veterans of Foreign Wars Post No. 1658 and Manila Outpost National Society Army of The Philippines each hold monthly meetings. The Gulfport Association of U. S. Veterans includes all ex-service men and their families and meets once each month.



THE NEARBY GULF OF MEXICO HAS MUCH TO OFFER

Boca Ciega Bay and the adjacent Gulf of Mexico offer unparalleled opportunity for full enjoyment of pleasure boating and game fishing. Many hundreds of miles of navigable waters, an endless variety of tropical scenery, and the thrills of every possible water sport await those who bring their boats to Gulfport. Leading directly from the Intracoastal Waterway at Stuart or Palm Beach, on the east coast of Florida, a choice of either the St. Lucia or Palm Beach canals which lead directly to Lake Okeechobee, may be had for the man who brings his boat down the inland waterway from any coastal or inland city in the east or south. The visitor may follow the charted course across the lake to the Caloosahatchee Canal and then along the Caloosahatchee River through Charlotte Harbor and up the gulf coast to the entrance to Tampa and Boca Ciega Bays. Gulfport offers one of the west coast's finest and safest natural harbors. This trip traces a course that is rich in natural beauty and historical lore and appeals to many sportsmen who seek the beauties of Florida in its quiet charm, far from highways, remote from the settlements, and seldom seen by the land-bound visitor.

Gulfport has natural port facilities which coupled with its location close to the Gulf waterways, makes it a logical location for development in the future, as well as the assurance of maintaining its supremacy as the finest fishing grounds on the west coast of Florida. It is the water from the Gulf of Mexico that make bathing at the Gulfport Beach so invigorating, while the sheltered position of the local beaches is particularly favored for the safety of both children and adults. The Gulf of Mexico is responsible for the ideal climate that Gulfportians enjoy the year around. The warm Gulf waters temper the wind in in Gulfport in mid-summer is usually from five to seven

degrees cooler than many nearby spots along the west coast. The same rule applies in winter except the variance of the mercury is not quite so marked, usually the temperature is from three to five degrees warmer. Gulfport offers a "town and country" combination that meets every taste, every "pocketbook," and every requirement of the homeseeker or winter visitor. The shops, theatres, churches, financial business, and social life of St. Petersburg are equally available to every citizen or visitor to Gulfport. This unusually favorable condition has been the means of attracting and bringing to Gulfport many of its splendid citizens. Gulfport claims as citizens many names that are known nationally for accomplishments in the business world, the literary world, and the many professions.



THE FISHERMAN'S PARADISE

Gulfport is known the country over as an ideal place to fish. Fishing boats leave the local municipal pier each morning for the fishing grounds in bay and gulf.

The wide variety of fishing extends around the 12 months of the year. The king fish has its season. The mackerel, the channel bass, the grouper and amberjack, along with many other varieties are fished for daily the year 'round.

The Tarpon Round-Up in mid-summer draws sportsmen from all over the United States. Prizes are offered for the season's largest catch. Here the "Scrappy Silver King" comes into its own.

The fishing boats of the local fleet ordinarily leave each morning at 8 o'clock and return at 5 o'clock in the afternoon, giving the angler a full day at his favorite sport. It is not unusual for an individual fishing boat to bring in a 2,000 pound "catch" of grouper or other fish that may be in season in the bay or gulf. Some of the local boats are known throughout the country as well as their captains and guides. Th's fleet helps keep up the water-front traditions and are an ever-increasing source of pleasure and entertainment for the visitors.



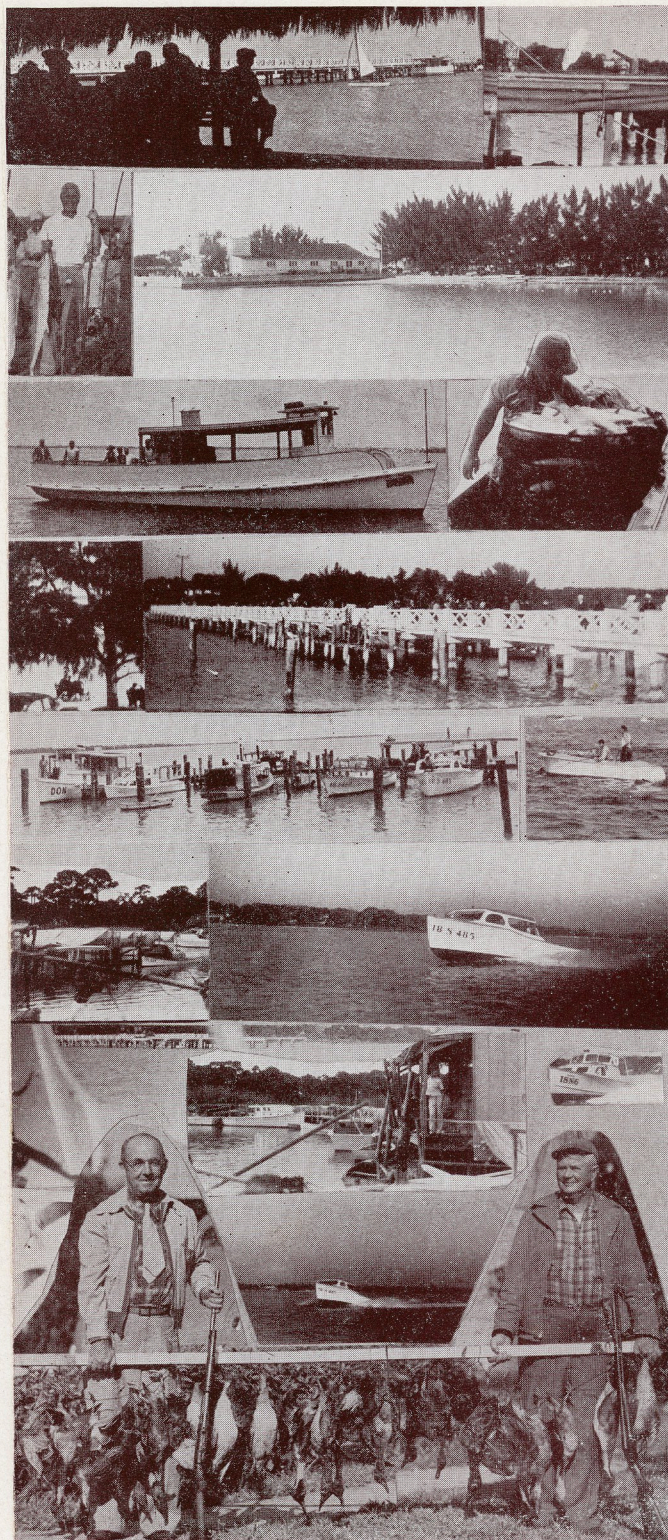
IS GULFPORT AN EXPENSIVE PLACE IN WHICH TO LIVE?

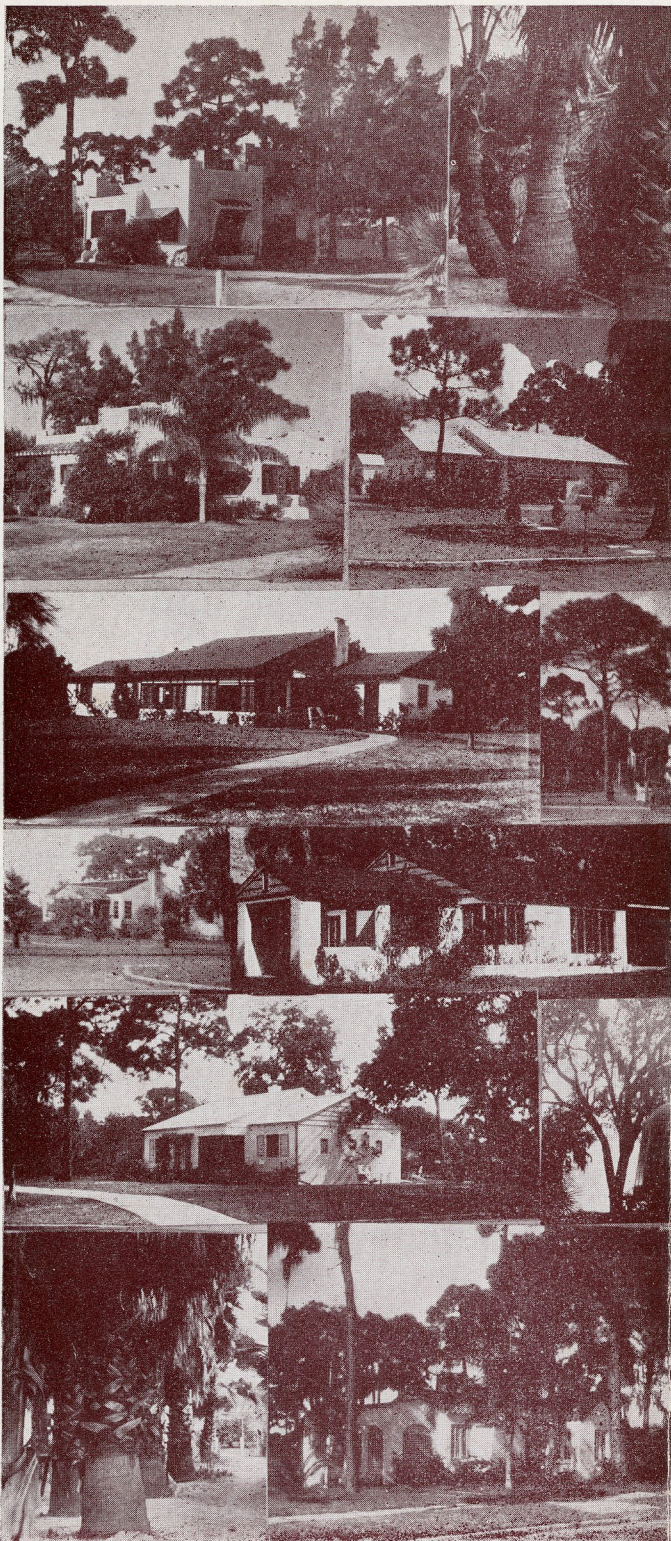
Gulfport is not an expensive town in which to live. The cost of staple products is about the same as in any similar community anywhere in America. The advantages of St. Petersburg's widely diversified retail outlets, supermarkets, departmentalized grocery stores and widely diversified department stores, in addition to the splendid markets and stores in Gulfport proper, coupled with the climatic advantages, reduce the cost of food, clothes and fuel; an abundance of Florida-grown foods makes their price attractive; and the wide variety of outdoor recreation makes the cost of entertainment very low. Here one may live as economically as anywhere in the country, or as lavishly as the tastes of the individual may dictate.



HEALTH

Many years ago a committee of famous medical men, seeking the location for a health city, chose the St. Petersburg-Gulfport area as the "healthiest spot on earth." Sunshine 360 days a year, mild, even temperatures and no extremes of heat in summer or cold in winter, plentiful winter and cool the breezes in summer. The temperature rainfall, together with many other advantages combined





to make this a haven for those seeking health and happiness. We enjoy the largest number of possible hours of sunshine and the most beneficial sunlight in the eastern United States. So dependable is the sunshine that the afternoon daily newspaper in St. Petersburg gives away its entire home edition every day on which the sun fails to shine before press time. In the past 31 years a total of only 136 papers has been given away—an average of less than 5 sunless days a year. The average mean temperature of Gulfport is 72 degrees Fahrenheit. The lowest temperature ever recorded was in February 1917 when the mercury hit the bottomless depth of 28 degrees. The highest temperature recording was in July 1932 when the mercury reached 97 degrees.



FAST TRANSPORTATION AND NEW HIGHWAYS

Gulfport is accessible from the North and Mid-west and is favored by having the fastest, streamlined, luxury trains used in America. The fastest schedule between New York and St. Petersburg is exactly 24 hours to the minute. Both the Atlantic Coast Line and Seaboard Air Line Railways operate directly out of St. Petersburg, the latter system passing through the corporate limits of Gulfport.

Many Florida-bound trains from other roads operating in the south make St. Petersburg the southernmost terminus for their direct Pullman connections. This particularly favorable condition places Gulfport within an overnight trip to the majority of America's most populous cities.

BUS SERVICE

The Florida Motor Lines maintain a fast limited, and frequent service to and from Jacksonville, Pensacola and Lake City, Florida, where connections are made with The Greyhound Bus service to a large percentage of the cities, towns, and hamlets in the United States.

A cross-state service is also maintained, and it is possible to visit the highland and grove section of Florida, including the Bok Tower located on the highest elevation in the state, while enroute to Palm Beach, Miami or other east coast towns and cities.

THE AUTOMOBILE

National Highway No. 19 comes within a few blocks of Gulfport. This highway extends from St. Petersburg to the Great Lakes and serves normally many thousands of Florida visitors each year.

The recently completed Gulf Coast Highway down the gulf coast carries countless thousands of tourists from the mid-west and deep south, extending its connections to New Orleans and the whole Louisiana and Texas area. This new scenic highway offers every improvement and advantage known in highway construction.

Both Gandy Bridge and Davis Causeway span Tampa Bay and bring the great mass of travel from the north, east and south.

STEAMSHIP

The Peninsular and Occidental Steamship Lines touch the peninsula enroute from Port Tampa to Key West and Havana. Under normal conditions many of our visitors take advantage of the opportunity to visit Key West, and many leisurely continue their journey on to Cuba, returning at stated intervals and docking on return to port of embarkation, at a St. Petersburg pier.

AIR TRAVEL

The National Airlines serve the Gulfport-St. Petersburg area; overnight passenger service to practically every northern city is available. This service provides fast overnight mail service to all points.

THE GULF BEACHES

Immediately to the west of the town limits of Gulfport and connected by free bridges and causeways, are several islands with many miles of beautiful beaches on the Gulf of Mexico. These islands, the sprightly, progressive towns, communities and tourist colonies, together with surf clubs, luxury hotels and cabanas, offer many interesting trips and a wide variety of entertainment for visitors, as well as citizens of Gulfport. On the upper reaches of Boca Ciega Bay and a short distance from the Gulf of Mexico, is Clearwater, the county seat of Pinellas County.



REAL ESTATE VALUES & HOMES

Residential lots in Gulfport are available in nearly any desired location at prices that compare favorably with those in other towns of similar size anywhere in America. Homes already built may be purchased or new ones can be constructed, under ordinary circumstances, at very moderate prices.

Real estate owners here are proud of their holdings and without exception their investments are increasing in value each year. The Florida Constitution provides that all homesteads shall be exempted from taxation up to the value of \$5,000.00. This constitutional amendment has done much toward encouraging home-ownership, and has brought people from every state in search of the long sought for "spot" that might be called home.

Gulfport is fortunate in having many modern apartment houses, cottage colonies, and cabanas. These are clean and comfortable. However, there are many who prefer to live in a home to themselves, and many of these are available for rental during the winter season, or the entire year.

It is always advisable to make inquiries well in advance of a prospective trip. It is not unusual to have every available rental unit filled well in advance of the height of the winter season. Inquiries addressed to The Gulfport Tribune, the newspaper serving in this connection as a clearing-house, will be answered immediately, and correct and sufficient information will be supplied.



THE CHURCHES

Gulfport is fortunate in having churches representing the several denominations.

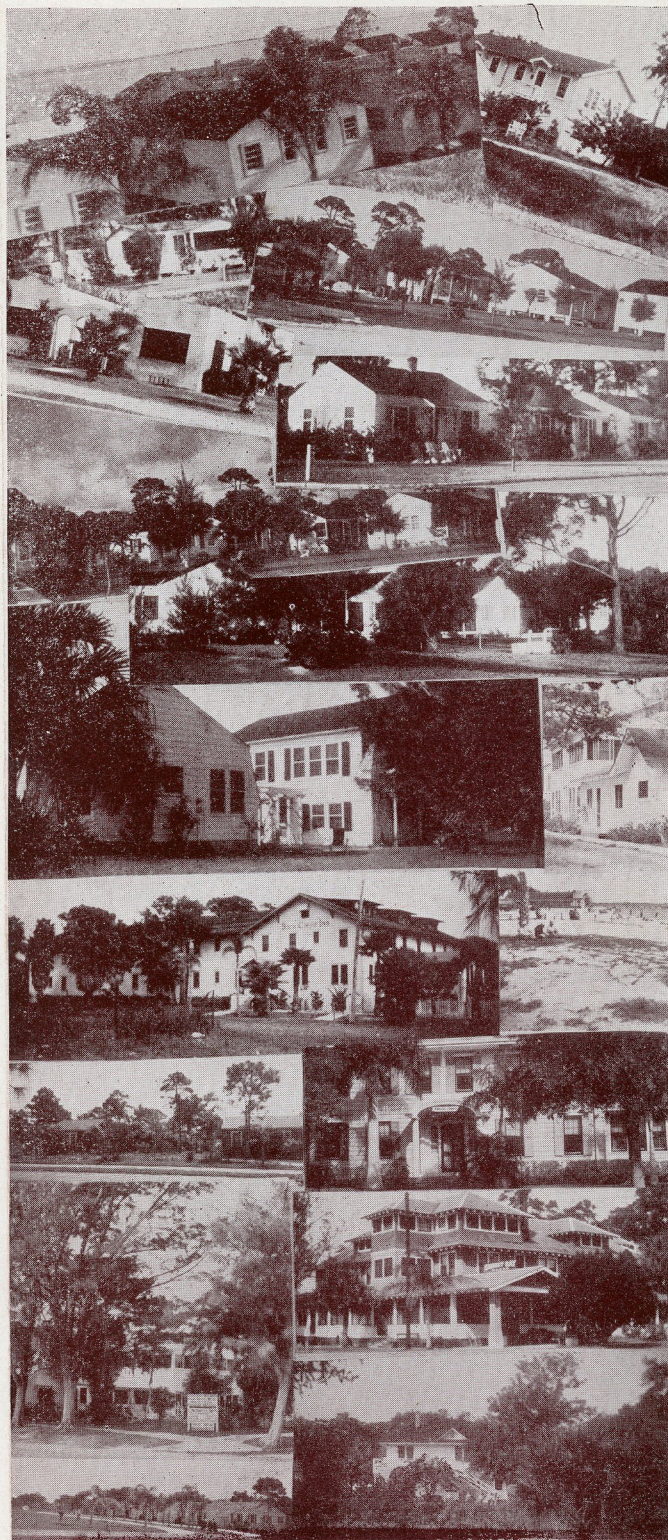
The Community Church has been at its present location on Lakeview Avenue since January, 1944. The building was erected when the church outgrew its former home in the Community Hall. The new church is adequate to meet the needs of a growing community, having several separate rooms for the Sunday School classes.

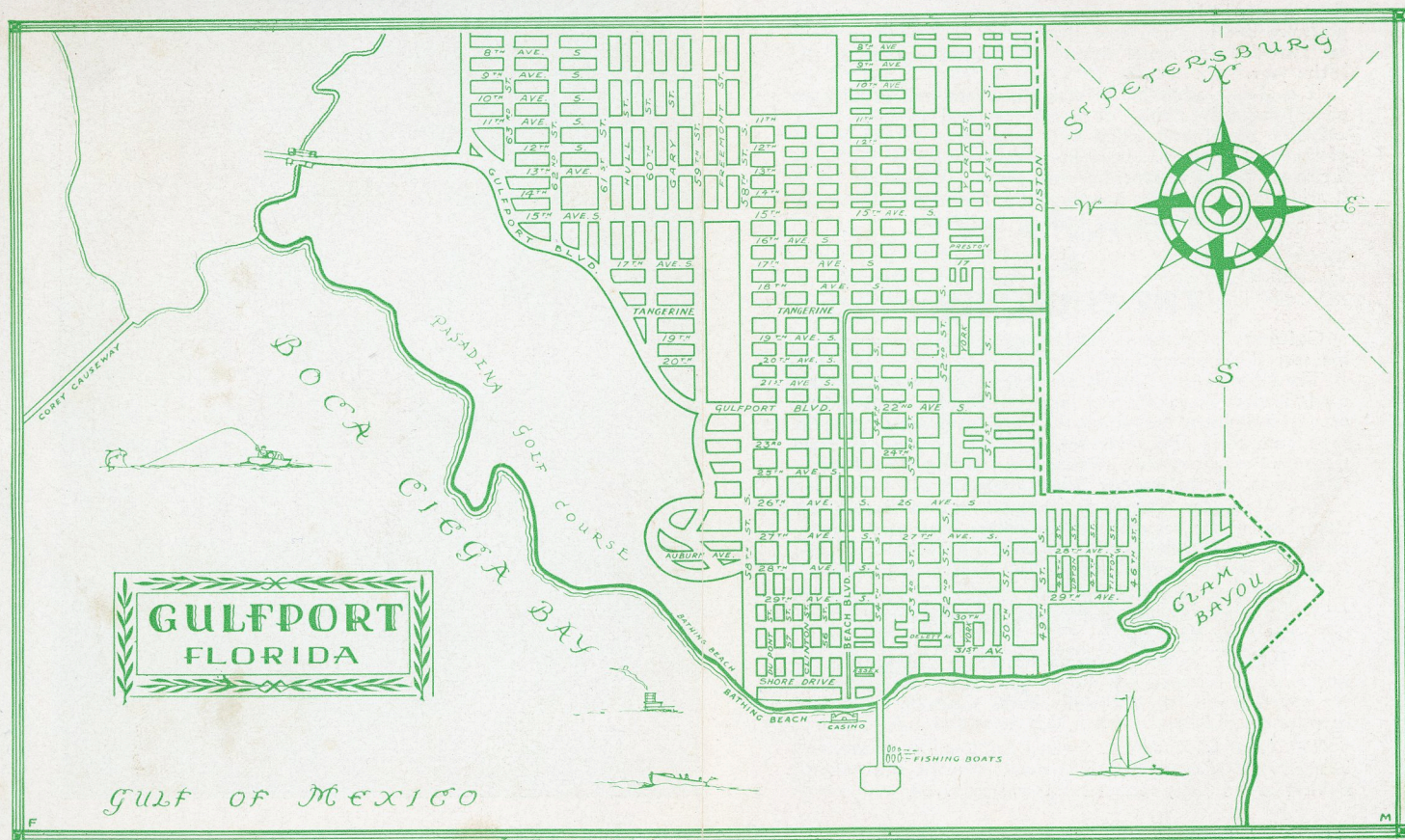
The Methodist Church is centrally located east of the Community Hall. Recent improvements have made possible a more adequate Sunday school. The interior of the church is as attractive as almost any church in the state.

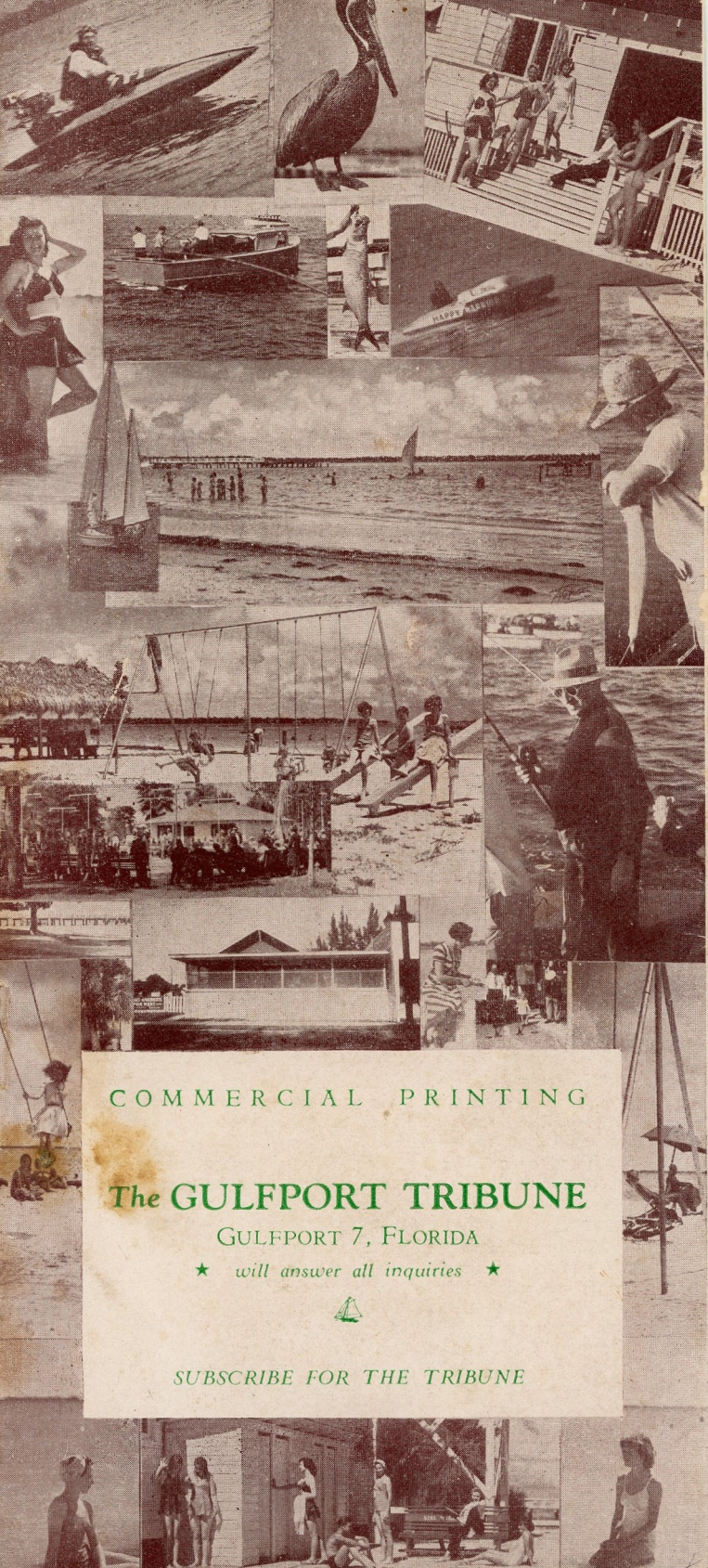
The Presbyterian Church, also centrally located, offers a Sunday school hour and morning worship in an attractive gray stone building.

St. Joseph's Catholic Church located on Lakeview Avenue a short distance outside of the immediate limits of the town, serves the followers of the Catholic faith, and may be reached by street car, bus or automobile.

The Church of Christ, located on Disston Boulevard, is a modern, brick edifice. The usual morning and evening services and Sunday school hours are observed.







COMMERCIAL PRINTING

The GULFPORT TRIBUNE

GULFPORT 7, FLORIDA

★ will answer all inquiries ★



SUBSCRIBE FOR THE TRIBUNE