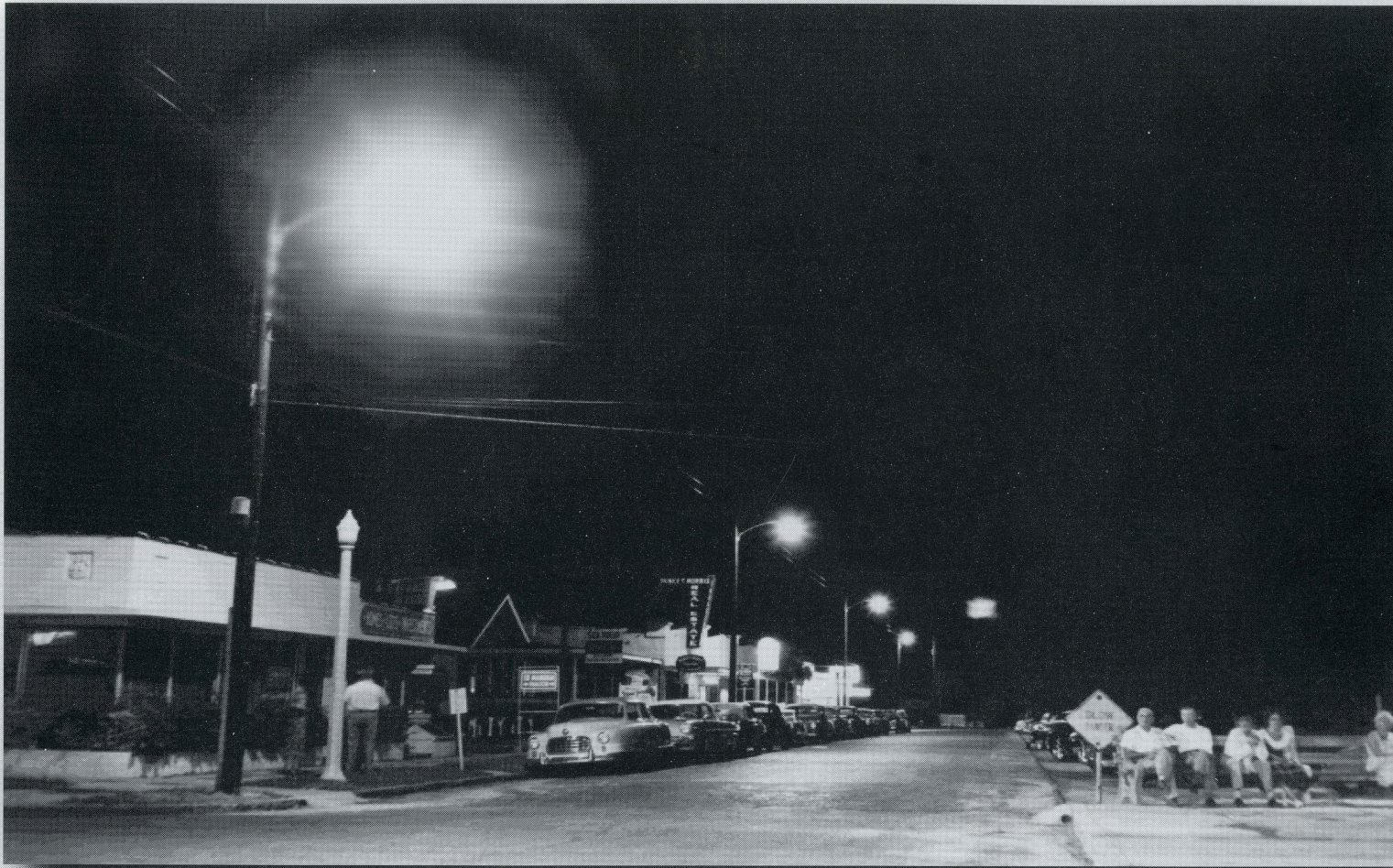


# Gulfport Historical Calendar



*Historic Businesses from Gulfport!*

**October 2012 – December 2013**

# CITY GOVERNMENT

## Your Elected Officials



**Dan Liedtke, Ward 1**



**Mike Yakes, Mayor**



**Barbara Banno, Ward 2**



**Jennifer Salmon, Ward 3**



**Sam Henderson, Vice Mayor, Ward 4**

# A FULL SERVICE CITY

## Where to reach us

### 911 – POLICE – FIRE – PARAMEDICS – EMERGENCY – 911

Police – Fire – EMS (Non-Emergency)	893-1030	Utility Billing	893-1000
City Hall and General Information	893-1000	Building/Zoning/Code Enforcement	893-1024
City Manager	893-1009	Sanitation/Trash Pick-up	893-1083
City Clerk	893-1012	Recreation Center	893-1068
Senior Center	893-2237	Marina/Ship Store	893-1071
Senior Center Special Events Line	893-5657	Library	893-1074
G.E.M.S.	893-2242	Casino/Theater	893-1070
Reassurance	893-2237	C.E.R.T.	893-1062
Gulfport Events	893-1118	Leisure Services	893-1066

- City Hall (2401 53<sup>rd</sup> St. S.) is the location for paying Water/Sewer, Electric and Bright House Cable Bills.
- Reassurance Program provides daily contact for residents living alone.
- G.E.M.S.(Gulfport Extended Mini-Bus Service) provides transportation from home to doctor or store for elderly and/or disabled.
- Senior Center provides congregate dining and food commodities, daily social activities & programs, events, as well as assistance with Social Services, Social Security, Income Taxes and Exercise programs.
- Recreation division provides classes and activities for all ages. Programs for children from age 3 to age 17: Tot Time provides 2,3 and 5 day programs, School Year Child Care provides after school activities from Kindergarten to 5<sup>th</sup> grade with transportation from Gulfport Elementary, Bear Creek and Pasadena Fundamental, Teen Night provides a fun and safe way for teens to meet with activities and field trips 3 nights a week (Monday, Wednesday, Friday, 6 – 9 p.m )
- At the Library, check out audio/video as well as books, free Wi-Fi for your laptop, sign up to use the Internet, enjoy free programs.
- Municipal Marina (5330 23<sup>rd</sup> St. S.) provides a boat launch, fuel, pump outs, moorings rentals and food/drink supplies.
- Building permits, Occupational Licenses, inspections can be obtained at the Public Services Building, 5330 23<sup>rd</sup> St. S.
- Catherine Hickman Theater available for live performance and rentals as well as the Casino Ballroom.
- C E.R.T. (Citizen Emergency Response Team) Volunteers to supplement Police, Fire and Emergency Response.
- Police and Fire Explorer Scout programs for ages 14 to 21.
- Free security surveys for City residents and businesses by a Police Officer.
- Free single family home Fire and Pool safety inspections by the Fire Department.
- For additional information and Gulfport events, visit [www.mygulfport.us](http://www.mygulfport.us)

# City of Gulfport Holiday Sanitation Schedule

**VETERAN'S DAY - SUNDAY, NOVEMBER 11, 2012**

No Change in Schedule

**THANKSGIVING DAY - THURSDAY, NOVEMBER 22, 2012**

Thursday's Pickup will be on Wednesday, November 21, 2012

Friday's Pickup will remain on Schedule

No Wednesday Yard Waste Pickup this week

**CHRISTMAS DAY - TUESDAY, DECEMBER 25, 2012**

Tuesday's Pickup will be on Wednesday, December 26, 2012

No Wednesday Yard Waste Pickup this week

**NEW YEAR'S DAY - TUESDAY, JANUARY 1, 2013**

Tuesday's Pickup will be on Wednesday, January 2, 2013

No Wednesday Yard Waste Pickup this week

**MARTIN LUTHER KING, JR. DAY - MONDAY, JANUARY 21, 2013**

No Change in Schedule

**MEMORIAL DAY - MONDAY, MAY 27, 2013**

No Change in Schedule

**INDEPENDENCE DAY - THURSDAY, JULY 4, 2013**

Thursday's Pickup will be on Wednesday, July 3, 2013

No Wednesday Yard Waste Pickup this week

**LABOR DAY - MONDAY, SEPTEMBER 2, 2013**

No Change in Schedule

**VETERAN'S DAY - MONDAY, NOVEMBER 11, 2013**

No Change in Schedule

**THANKSGIVING DAY - THURSDAY, NOVEMBER 28, 2013**

Thursday's Pickup will be on Wednesday, November 27, 2013

Friday's Pickup will remain on Schedule

No Wednesday Yard Waste Pickup this week

**CHRISTMAS DAY - WEDNESDAY, DECEMBER 25, 2013**

No Wednesday Yard Waste Pickup this week

# Gulfport Historical Society, Inc.

## OFFICERS OF THE GULFPORT HISTORICAL SOCIETY, INC.

### OFFICERS

President, Miki Vaughan  
Vice President, Priscilla Hoon  
Secretary, Carol Valdes  
Treasurer, Christine Brown

### BOARD MEMBERS

Lynne Brown  
Catherine Culler  
Marie Gsell  
Mary Stull  
Bob Worthington

### MUSEUM STAFF

Historian, Lynne Brown  
Curator, Diann Franks

Docent Chair, Marie Gsell  
Docent, Deborah Frethern  
Docent, Fran Worthington

**THE SOCIETY**· The Gulfport Historical Society was founded in 1981 as a non-profit association dedicated to the gathering, distribution, and preservation of the history of Gulfport. Its first goal was to compile a book on the community "Our Story of Gulfport," a collection of essays and memoirs, was published in 1985 and is now out of print. In 1999 a photo survey of Gulfport became one of Arcadia Publishing's "Images of America" series. Lynne Brown's first volume of "A Definitive History" was published in 2004 and the final volume came out in connection with our Centennial in 2010.

**THE MUSEUM:** Another early goal was to find a home for the memorabilia donated by residents. This was accomplished in 1984 when the Society leased the former Methodist church building in Chase Park, and began to collect research and exhibit materials. The Museum has been open on a regular basis for the past 28 years, and now is available to the public six days a week, from 2 to 4 on weekday afternoons and 10-12 Saturday mornings.

The **Gulfport Historical Museum** is located at 5301 28<sup>th</sup> Avenue South and serves as a free resource for citizens, visitors, and historians. Research your family, the history of your house, or just look through old Gulfport photos on our public computer. The Museum's website, [www.gulfporthistoricalsociety.org](http://www.gulfporthistoricalsociety.org) provides an outline of all the materials available. We also publish a monthly newsletter, and Email inquiries are always welcomed, write us at [admin@gulfporthistoricalsociety.org](mailto:admin@gulfporthistoricalsociety.org).

Check through the calendar for our 2013 schedule of events, and don't miss the nostalgic Birthday Bash (Saturday, October 6, 2012), our annual celebration of Gulfport's incorporation in 1910. All are welcome to enjoy our traditional fish fry and trolley tours, children's activities and antiques appraisals.

## THEME OF THIS YEAR'S CALENDAR GULFPORT BUSINESSES

Over the years, Gulfport has seen some rather unique establishments among its business community, many totally forgotten by today's population. In the early days, you could have visited a goat farm (2620 Beach Boulevard), or a banana plantation and gladiola gardens (2723 56<sup>th</sup> Street South). Later, you could have played a round of miniature golf course (5513 Shore Boulevard), learned about typesetting with an art book publisher (5437 29<sup>th</sup> Avenue South), and picked some lucky charms at what was perhaps the only four-leaf clover nursery in the world (4904 9<sup>th</sup> Avenue South). And of course you could have eaten at almost as wide a variety of restaurants as we have today.



**The Gremlin Golf Course, 5513 Shore Boulevard, c. 1949**

# OCTOBER 2012

Sunday	Monday	Tuesday	Wednesday	Thursday	Friday	Saturday
	<b>1</b>	<b>2</b> Gulfport Fresh Market 9 a.m.	<b>3</b> Boca Ciega Home Coming Parade	<b>4</b>	<b>5</b>	<b>6</b> Gulfport Lions Pancake Breakfast 7 11 a.m.
		Council Meeting City Hall 7 p.m.	Planning and Zoning City Hall 6:30 p.m.		Art Walk, 6 10 p.m.	Gulfport Birthday Bash! Historical Museum 10 a.m. 4 p.m.
<b>7</b>	<b>8</b> Columbus Day Senior Center Birthday Celebration!	<b>9</b> Gulfport Fresh Market 9 a.m.	<b>10</b> Senior Center Birthday Celebration	<b>11</b>	<b>12</b>	<b>13</b>
	Crime Watch Meeting Neighborhood Ctr , 7 p.m.		SO49 Meeting Neighborhood Ctr 5:30 p.m.	Holy Name OctoberFest	Holy Name OctoberFest	Holy Name OctoberFest
			Board of Adjustment City Hall 6:30 p.m.			
<b>14</b>	<b>15</b>	<b>16</b> Gulfport Fresh Market 9 a.m.	<b>17</b>	<b>18</b>	<b>19</b>	<b>20</b>
Holy Name OctoberFest		Council Meeting City Hall 7 p.m.		Council Workshop City Hall		Clam Bayou Cleanup 9 a.m. Noon
				C.E.R.T Mtg. Senior Centerl, 7 p.m.		Art Walk, 6 10 p.m.
<b>21</b>	<b>22</b>	<b>23</b> Gulfport Fresh Market 9 a.m.	<b>24</b> United Nations Day	<b>25</b>	<b>26</b>	<b>27</b>
<b>28</b>	<b>29</b>	<b>30</b> Gulfport Fresh Market 9 a.m.	<b>31</b> Halloween Gulfport Recreation Div Spooktacular Halloween! 7 p.m.			

### September 2012

S	M	T	W	Th	F	Sa
						1
2	3	4	5	6	7	8
9	10	11	12	13	14	15
16	17	18	19	20	21	22
23	24	25	26	27	28	29
30						

### November 2012

S	M	T	W	Th	F	Sa
				1	2	3
4	5	6	7	8	9	10
11	12	13	14	15	16	17
18	19	20	21	22	23	24
25	26	27	28	29	30	

### Notes:

Events subject to change



Florida Nook Tea Room, corner of Shore Boulevard  
and 54<sup>th</sup> Street, c. 1915.

The Gremlin Golf Course, 5543 Shore Boulevard, c. 1949



# NOVEMBER 2012

Sunday	Monday	Tuesday	Wednesday	Thursday	Friday	Saturday																																																																																											
				1	2	3 Gulfport Lions Pancake Breakfast 7 - 11 a.m. City-Wide Yard Sale Antiques in the Park Clymer Park																																																																																											
					Art Walk, 6 - 10 p.m.																																																																																												
4 Daylight Savings	5	6 Gulfport Fresh Market 9 a.m.  Council Meeting City Hall, 7 p.m.	7  SO49 Meeting Neighborhood Ctr. 5:30 p.m. Planning and Zoning City Hall, 6:30 p.m.	8  Las Vegas Night at The Casino!  GCP The Playboy of the Western World Theater, 8 p.m.	9  GCP The Playboy of the Western World, Theater 8 p.m.	10 Veteran's Day Parade 4 p.m. Beach Blvd./Shore Blvd  GCP The Playboy of the Western World Theater 8 p.m.																																																																																											
11 Veterans Day  GCP The Playboy of the Western World Theater, 2 p.m.	12 CITY HALL CLOSED Regular Trash pickup  Crime Watch Meeting Neighborhood Ctr 7 p.m.	13 Gulfport Fresh Market 9 a.m.	14 City of Gulfport Volunteer Luncheon  Board of Adjustment City Hall, 6:30 p.m.	15 Council Workshop City Hall  CERT Mtg. Sen. Ctr 6:30 p.m.  GCP The Playboy of the Western World, Theater, 8 p.m.	16  GCP The Playboy of the Western World Theater 8 p.m.	17  Art Walk, 6-10 p.m.  GCP The Playboy of the Western World, Theater, 8 p.m.																																																																																											
18  GCP The Playboy of the Western World, Theater, 2 p.m.	19	20 Gulfport Fresh Market 9 a.m.  Gulfport Senior Ctr Thanksgiving Dinner  Council Meeting City Hall, 7 p.m.	21 Thursdays trash pickup today  No yard waste pickup this week	22 Thanksgiving  No Trash Pick-up  CITY HALL CLOSED	23 Regular Trash Pick up today  CITY HALL CLOSED	24																																																																																											
25	26	27 Gulfport Fresh Market 9 a.m.	28  Historic Preservation City Hall, 5:30 p.m.	29	30																																																																																												
		<b>October 2012</b> <table border="1"> <tr><td>S</td><td>M</td><td>T</td><td>W</td><td>Th</td><td>F</td><td>Sa</td></tr> <tr><td></td><td>1</td><td>2</td><td>3</td><td>4</td><td>5</td><td>6</td></tr> <tr><td>7</td><td>8</td><td>9</td><td>10</td><td>11</td><td>12</td><td>13</td></tr> <tr><td>14</td><td>15</td><td>16</td><td>17</td><td>18</td><td>19</td><td>20</td></tr> <tr><td>21</td><td>22</td><td>23</td><td>24</td><td>25</td><td>26</td><td>27</td></tr> <tr><td>28</td><td>29</td><td>30</td><td>31</td><td></td><td></td><td></td></tr> </table>		S	M	T	W	Th	F	Sa		1	2	3	4	5	6	7	8	9	10	11	12	13	14	15	16	17	18	19	20	21	22	23	24	25	26	27	28	29	30	31				<b>December 2012</b> <table border="1"> <tr><td>S</td><td>M</td><td>T</td><td>W</td><td>Th</td><td>F</td><td>Sa</td></tr> <tr><td></td><td></td><td></td><td></td><td></td><td></td><td>1</td></tr> <tr><td>2</td><td>3</td><td>4</td><td>5</td><td>6</td><td>7</td><td>8</td></tr> <tr><td>9</td><td>10</td><td>11</td><td>12</td><td>13</td><td>14</td><td>15</td></tr> <tr><td>16</td><td>17</td><td>18</td><td>19</td><td>20</td><td>21</td><td>22</td></tr> <tr><td>23</td><td>24</td><td>25</td><td>26</td><td>27</td><td>28</td><td>29</td></tr> <tr><td>30</td><td>31</td><td></td><td></td><td></td><td></td><td></td></tr> </table>		S	M	T	W	Th	F	Sa							1	2	3	4	5	6	7	8	9	10	11	12	13	14	15	16	17	18	19	20	21	22	23	24	25	26	27	28	29	30	31						<b>Notes:</b>  Events subject to change
S	M	T	W	Th	F	Sa																																																																																											
	1	2	3	4	5	6																																																																																											
7	8	9	10	11	12	13																																																																																											
14	15	16	17	18	19	20																																																																																											
21	22	23	24	25	26	27																																																																																											
28	29	30	31																																																																																														
S	M	T	W	Th	F	Sa																																																																																											
						1																																																																																											
2	3	4	5	6	7	8																																																																																											
9	10	11	12	13	14	15																																																																																											
16	17	18	19	20	21	22																																																																																											
23	24	25	26	27	28	29																																																																																											
30	31																																																																																																



**The Holiday Inn, 3000 Beach Boulevard,  
with Catherine Hickman's office, 1980s.**

# DECEMBER 2012

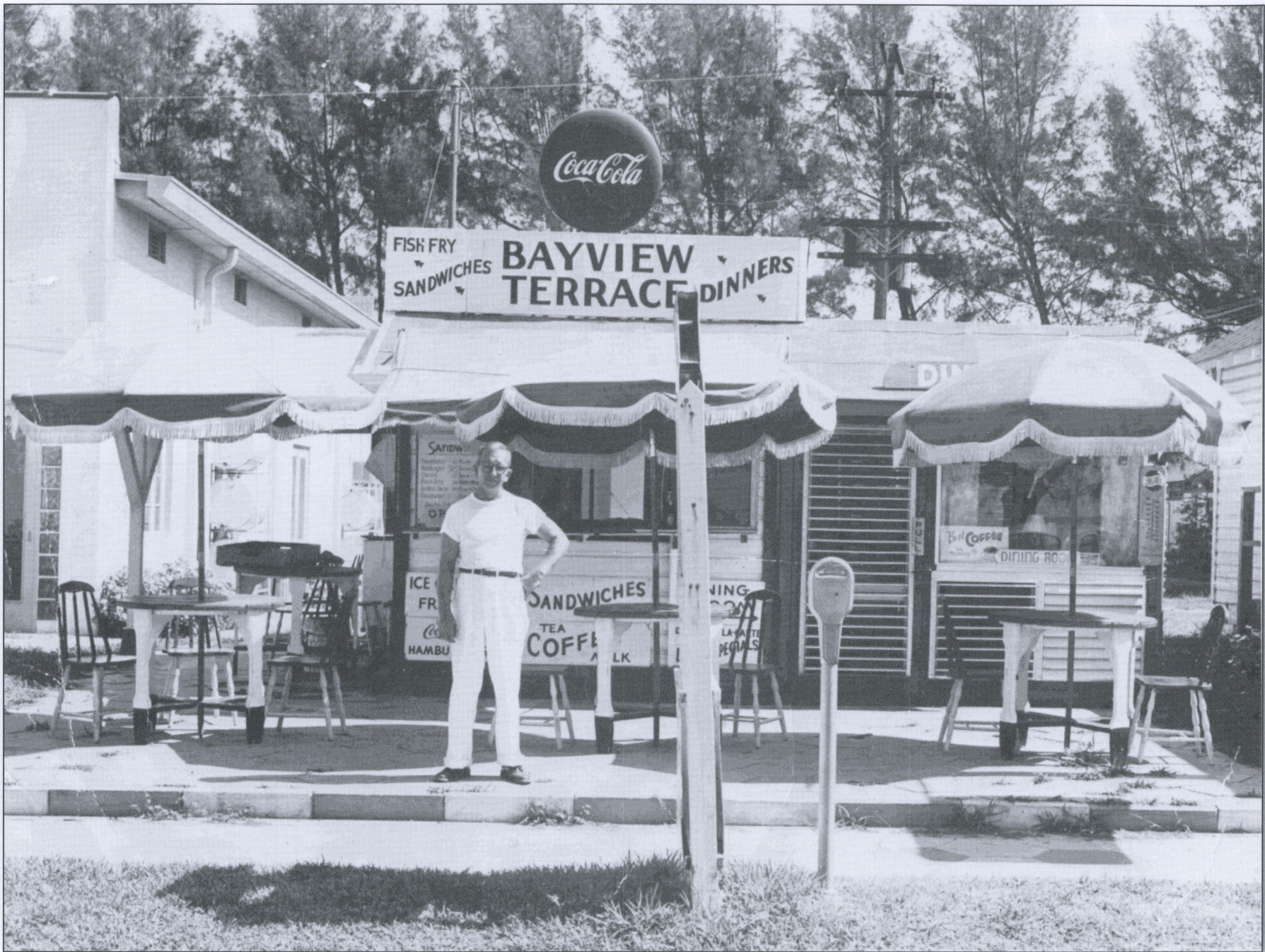
Sunday	Monday	Tuesday	Wednesday	Thursday	Friday	Saturday																																																																																				
						<b>1</b> Gulfport Lions Pancake Breakfast 7 a.m. 11 a.m.																																																																																				
<b>2</b>	<b>3</b> City of Gulfport Holiday Tree Lighting Cylmer Park, 7 p.m.	<b>4</b> Gulfport Fresh Market 9 a.m.  Council Meeting City Hall, 7 p.m.	<b>5</b> SO49 Meeting Neighborhood Ctr 5:30 p.m. Planning and Zoning City Hall 6:30 p.m.	<b>6</b>	<b>7</b>  Art Walk, 6 10 p.m.	<b>8</b> BCYC Christmas Boat Parade *HolidayHoopla Beach Blvd. 10 a.m. 6 p.m.																																																																																				
<b>9</b> Chanukkah	<b>10</b> City of Gulfport Reassurance Dinner Senior Center Crime Watch Mtg Neighborhood Ctr 7 p.m.	<b>11</b> Gulfport Fresh Market 9 a.m.	<b>12</b>  Board of Adjustment City Hall, 6:30 p.m.	<b>13</b>	<b>14</b> Museum Jolly Trolley Christmas Party 7 p.m.	<b>15</b>  Merchant Santa Speedo Run Art Walk, 6 10 p.m.																																																																																				
<b>16</b>	<b>17</b>	<b>18</b> Gulfport Fresh Market 9 a.m.  Council Meeting City Hall, 7 p.m.	<b>19</b>	<b>20</b> Lions Toys for Tots Council Workshop City Hall C.E.R.T Mtg Senior Center 7 p.m.	<b>21</b> Dec. Solstice Lions Toys for Tots  Lions Carols by Candlelight	<b>22</b> Lions Toys for Tots																																																																																				
<b>23</b>	<b>24</b> Christmas Eve  CITY HALL CLOSED Regular trash pickup	<b>25</b> Christmas Day  CITY HALL CLOSED No trash pick up	<b>26</b> Tuesdays trash pickup today No yard waste pickup this week	<b>27</b>	<b>28</b>	<b>29</b>																																																																																				
<b>30</b>	<b>31</b> New Year's Eve  New Years Eve Dance, Casino	<b>November 2012</b> <table border="1"> <tr><td>S</td><td>M</td><td>T</td><td>W</td><td>Th</td><td>F</td><td>Sa</td></tr> <tr><td></td><td></td><td></td><td></td><td>1</td><td>2</td><td>3</td></tr> <tr><td>4</td><td>5</td><td>6</td><td>7</td><td>8</td><td>9</td><td>10</td></tr> <tr><td>11</td><td>12</td><td>13</td><td>14</td><td>15</td><td>16</td><td>17</td></tr> <tr><td>18</td><td>19</td><td>20</td><td>21</td><td>22</td><td>23</td><td>24</td></tr> <tr><td>25</td><td>26</td><td>27</td><td>28</td><td>29</td><td>30</td><td></td></tr> </table>		S	M	T	W	Th	F	Sa					1	2	3	4	5	6	7	8	9	10	11	12	13	14	15	16	17	18	19	20	21	22	23	24	25	26	27	28	29	30		<b>January 2013</b> <table border="1"> <tr><td>S</td><td>M</td><td>T</td><td>W</td><td>Th</td><td>F</td><td>Sa</td></tr> <tr><td></td><td></td><td>1</td><td>2</td><td>3</td><td>4</td><td>5</td></tr> <tr><td>6</td><td>7</td><td>8</td><td>9</td><td>10</td><td>11</td><td>12</td></tr> <tr><td>13</td><td>14</td><td>15</td><td>16</td><td>17</td><td>18</td><td>19</td></tr> <tr><td>20</td><td>21</td><td>22</td><td>23</td><td>24</td><td>25</td><td>26</td></tr> <tr><td>27</td><td>28</td><td>29</td><td>30</td><td>31</td><td></td><td></td></tr> </table>		S	M	T	W	Th	F	Sa			1	2	3	4	5	6	7	8	9	10	11	12	13	14	15	16	17	18	19	20	21	22	23	24	25	26	27	28	29	30	31			<b>Notes:</b>  Events subject to change
S	M	T	W	Th	F	Sa																																																																																				
				1	2	3																																																																																				
4	5	6	7	8	9	10																																																																																				
11	12	13	14	15	16	17																																																																																				
18	19	20	21	22	23	24																																																																																				
25	26	27	28	29	30																																																																																					
S	M	T	W	Th	F	Sa																																																																																				
		1	2	3	4	5																																																																																				
6	7	8	9	10	11	12																																																																																				
13	14	15	16	17	18	19																																																																																				
20	21	22	23	24	25	26																																																																																				
27	28	29	30	31																																																																																						



Daniels Clover Specialty Company, 4904 9<sup>th</sup> Avenue South, 1960s-1980s.

# JANUARY 2013

Sunday	Monday	Tuesday	Wednesday	Thursday	Friday	Saturday																																																																																																		
		<b>1</b> New Year's Day CITY HALL CLOSED  Council Meeting TBA	<b>2</b>  Planning and Zoning City Hall, 6:30 p.m.	<b>3</b>	<b>4</b>  Art Walk, 6 - 10 p.m.	<b>5</b>  City of Gulfport 5k Prostate Run																																																																																																		
<b>6</b>	<b>7</b>	<b>8</b> Gulfport Fresh Market 9 a.m.	<b>9</b>  SO49 Meeting Neighborhood Ctr 5:30 p.m. Board of Adjustment City Hall 6:30 p.m.	<b>10</b>  GCP-Sordid Lives Theater, 8 p.m.	<b>11</b>  GCP-Sordid Lives Theater 8 p.m.	<b>12</b> Museum Trip, 0 a.m. Gulfport Lions Spaghetti Supper GCP-Sordid Lives Theater 8 p.m.																																																																																																		
<b>13</b>  GCP-Sordid Lives Theater 2 p.m.	<b>14</b> Crime Watch Meeting Neighborhood Ctr 7 p.m.	<b>15</b> Gulfport Fresh Market 9 a.m.  Council Meeting City Hall 7 p.m.	<b>16</b>	<b>17</b>  Council Workshop City Hall C.E.R.T Mtg. Senior Center, 7 p.m.	<b>18</b> City of Gulfport Arbor Day Gulfport Beach 5730 Shore Blvd. S. by Pavillion # 7	<b>19</b>  Art Walk, 6 - 10 p.m.																																																																																																		
<b>20</b>	<b>21</b> ML King Day CITY HALL CLOSED Regular trash pickup	<b>22</b> Gulfport Fresh Market 9 a.m.	<b>23</b>	<b>24</b>	<b>25</b>	<b>26</b>																																																																																																		
<b>27</b>	<b>28</b> Senior Center Health and Beauty Fair	<b>29</b> Gulfport Fresh Market 9 a.m.	<b>30</b>	<b>31</b>																																																																																																				
		<b>December 2012</b> <table border="1"> <tr><td>S</td><td>M</td><td>T</td><td>W</td><td>Th</td><td>F</td><td>Sa</td></tr> <tr><td></td><td></td><td></td><td></td><td></td><td></td><td>1</td></tr> <tr><td>2</td><td>3</td><td>4</td><td>5</td><td>6</td><td>7</td><td>8</td></tr> <tr><td>9</td><td>10</td><td>11</td><td>12</td><td>13</td><td>14</td><td>15</td></tr> <tr><td>16</td><td>17</td><td>18</td><td>19</td><td>20</td><td>21</td><td>22</td></tr> <tr><td>23</td><td>24</td><td>25</td><td>26</td><td>27</td><td>28</td><td>29</td></tr> <tr><td>30</td><td>31</td><td></td><td></td><td></td><td></td><td></td></tr> </table>		S	M	T	W	Th	F	Sa							1	2	3	4	5	6	7	8	9	10	11	12	13	14	15	16	17	18	19	20	21	22	23	24	25	26	27	28	29	30	31						<b>February 2013</b> <table border="1"> <tr><td>S</td><td>M</td><td>T</td><td>W</td><td>Th</td><td>F</td><td>Sa</td></tr> <tr><td></td><td></td><td></td><td></td><td></td><td>1</td><td>2</td></tr> <tr><td>3</td><td>4</td><td>5</td><td>6</td><td>7</td><td>8</td><td>9</td></tr> <tr><td>10</td><td>11</td><td>12</td><td>13</td><td>14</td><td>15</td><td>16</td></tr> <tr><td>17</td><td>18</td><td>19</td><td>20</td><td>21</td><td>22</td><td>23</td></tr> <tr><td>24</td><td>25</td><td>26</td><td>27</td><td>28</td><td></td><td></td></tr> <tr><td></td><td></td><td></td><td></td><td></td><td></td><td></td></tr> </table>		S	M	T	W	Th	F	Sa						1	2	3	4	5	6	7	8	9	10	11	12	13	14	15	16	17	18	19	20	21	22	23	24	25	26	27	28										<b>Notes:</b>  Events subject to change
S	M	T	W	Th	F	Sa																																																																																																		
						1																																																																																																		
2	3	4	5	6	7	8																																																																																																		
9	10	11	12	13	14	15																																																																																																		
16	17	18	19	20	21	22																																																																																																		
23	24	25	26	27	28	29																																																																																																		
30	31																																																																																																							
S	M	T	W	Th	F	Sa																																																																																																		
					1	2																																																																																																		
3	4	5	6	7	8	9																																																																																																		
10	11	12	13	14	15	16																																																																																																		
17	18	19	20	21	22	23																																																																																																		
24	25	26	27	28																																																																																																				

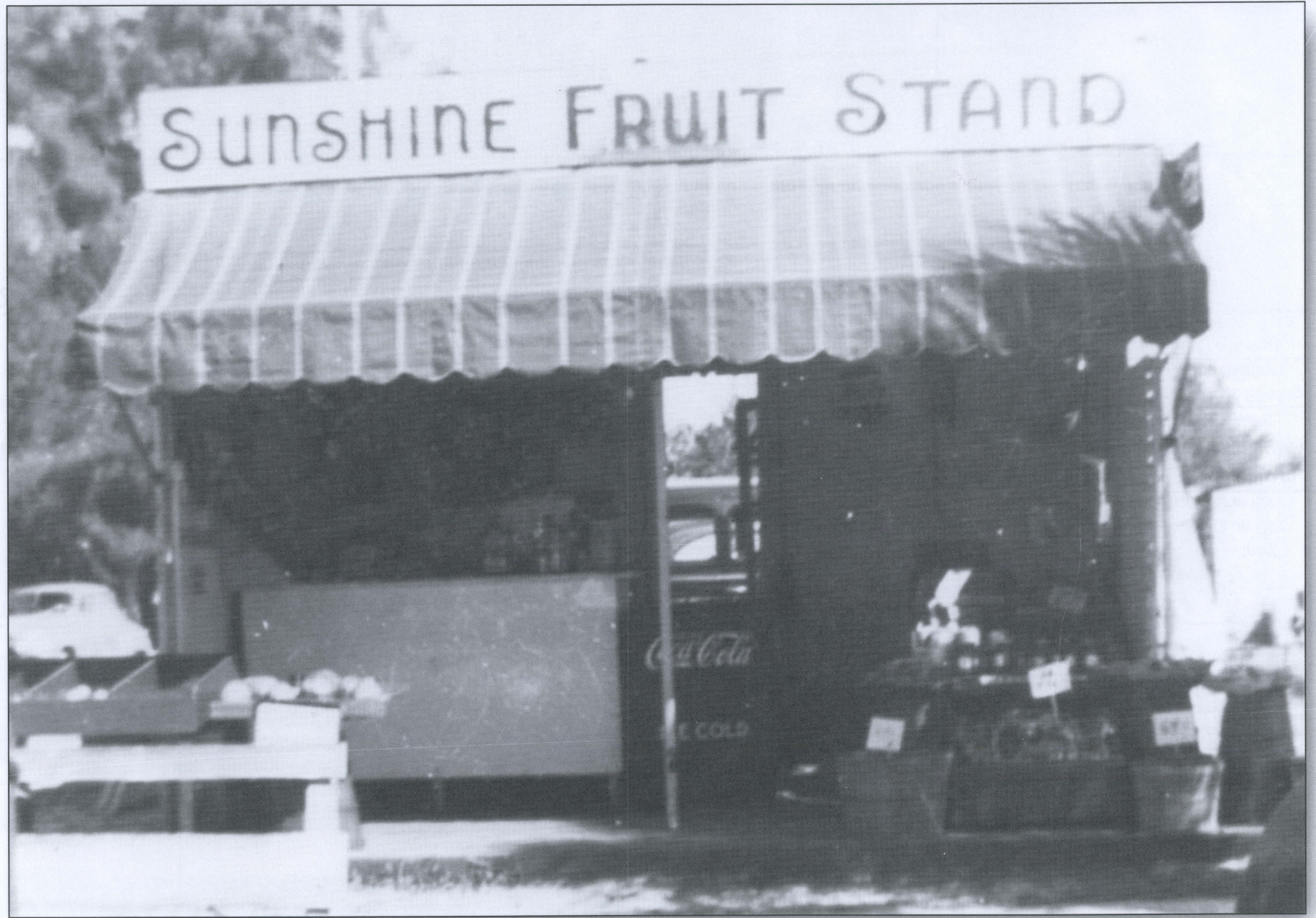


Daniels Clover Specialty Advertising, Inc. Atlanta, Georgia, 1960s-1980s.

**The Bayview Terrace Restaurant, 5441 Shore Boulevard, c. 1953.**

# FEBRUARY 2013

Sunday	Monday	Tuesday	Wednesday	Thursday	Friday	Saturday																																																																																											
					1	2 Groundhog Day  Gulfport Lions Pancake Breakfast 7 11am SO49 Classic Car Show Tangerine Greenway																																																																																											
3	4	5 Gulfport Fresh Market 9 a.m.  Council Meeting City Hall, 7 p.m.	6  SO49 Meeting Neighborhood Ctr 5:30 p.m. Planning and Zoning City Hall, 6:30 p.m.	7	8  Museum General Mtg. 7 p.m.	9 PAVA Cool Art Show Casino Ballroom																																																																																											
10 PAVA Cool Art Show Casino Ballroom	11  Crime Watch Meeting Neighborhood Ctr 7 p.m.	12 Lincoln's B-Day Gulfport Fresh Market 9 a.m.	13  Board of Adjustment City Hall, 6:30 p.m.	14 Valentines Day Casino Valentines Dance	15	16  City of Gulfport's Family Fun Day Tomlinson Park Art Walk, 6 10 p.m.																																																																																											
17	18 President's Day	19 Gulfport Fresh Market 9 a.m.  Council Meeting City Hall, 7 p.m.	20  Historic Preservation City Hall, 5:30 p.m.	21 Council Workshop City Hall C.E.R.T Mtg Senior Center 7 p.m. GCP The Woman in Black, Theater, 8 p.m.	22 Washington's B'Day  GCP The Woman in Black, Theater 8 p.m.	23 GMA-Get Rescued Beach Blvd S. Get Rescued Evening Casino Ballroom GCP The Woman in Black, Theater 8 p.m.																																																																																											
24  GCP The Woman in Black, Theater, 8 p.m.	25	26 Gulfport Fresh Market 9 a.m.	27	28  GCP The Woman in Black, Theater, 8 p.m.																																																																																													
		<b>January 2013</b> <table border="1"> <tr><td>S</td><td>M</td><td>T</td><td>W</td><td>Th</td><td>F</td><td>Sa</td></tr> <tr><td></td><td></td><td>1</td><td>2</td><td>3</td><td>4</td><td>5</td></tr> <tr><td>6</td><td>7</td><td>8</td><td>9</td><td>10</td><td>11</td><td>12</td></tr> <tr><td>13</td><td>14</td><td>15</td><td>16</td><td>17</td><td>18</td><td>19</td></tr> <tr><td>20</td><td>21</td><td>22</td><td>23</td><td>24</td><td>25</td><td>26</td></tr> <tr><td>27</td><td>28</td><td>29</td><td>30</td><td>31</td><td></td><td></td></tr> </table>		S	M	T	W	Th	F	Sa			1	2	3	4	5	6	7	8	9	10	11	12	13	14	15	16	17	18	19	20	21	22	23	24	25	26	27	28	29	30	31			<b>March 2013</b> <table border="1"> <tr><td>S</td><td>M</td><td>T</td><td>W</td><td>Th</td><td>F</td><td>Sa</td></tr> <tr><td></td><td></td><td></td><td></td><td></td><td>1</td><td>2</td></tr> <tr><td>3</td><td>4</td><td>5</td><td>6</td><td>7</td><td>8</td><td>9</td></tr> <tr><td>10</td><td>11</td><td>12</td><td>13</td><td>14</td><td>15</td><td>16</td></tr> <tr><td>17</td><td>18</td><td>19</td><td>20</td><td>21</td><td>22</td><td>23</td></tr> <tr><td>24</td><td>25</td><td>26</td><td>27</td><td>28</td><td>29</td><td>30</td></tr> <tr><td>31</td><td></td><td></td><td></td><td></td><td></td><td></td></tr> </table>		S	M	T	W	Th	F	Sa						1	2	3	4	5	6	7	8	9	10	11	12	13	14	15	16	17	18	19	20	21	22	23	24	25	26	27	28	29	30	31							<b>Notes:</b>  Events subject to change
S	M	T	W	Th	F	Sa																																																																																											
		1	2	3	4	5																																																																																											
6	7	8	9	10	11	12																																																																																											
13	14	15	16	17	18	19																																																																																											
20	21	22	23	24	25	26																																																																																											
27	28	29	30	31																																																																																													
S	M	T	W	Th	F	Sa																																																																																											
					1	2																																																																																											
3	4	5	6	7	8	9																																																																																											
10	11	12	13	14	15	16																																																																																											
17	18	19	20	21	22	23																																																																																											
24	25	26	27	28	29	30																																																																																											
31																																																																																																	



**The Sunshine Fruit Stand, 3126 Beach Boulevard, c. 1947.**

The Bayview Terrace Restaurant, 3441 Shore Boulevard, c. 1953.



# MARCH 2013

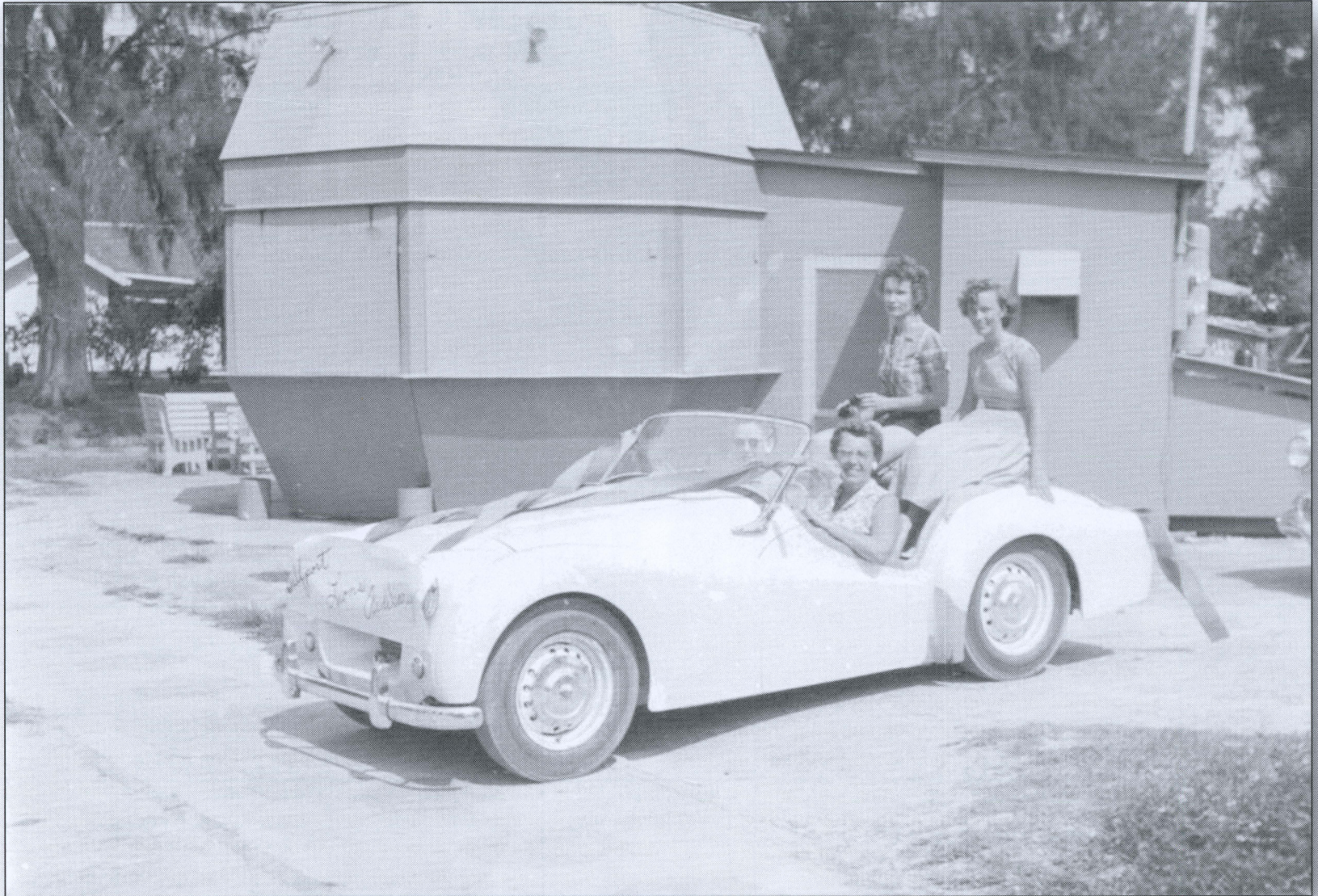
Sunday	Monday	Tuesday	Wednesday	Thursday	Friday	Saturday																																																																																				
					<b>1</b> Art Walk, 6 10 p.m.  GCP The Woman in Black, Theater, 8 p.m.	<b>2</b> Little League Parade & Opening Day 0 a.m Tomlinson GCP The Woman in Black, Theater 8 p.m.																																																																																				
<b>3</b>  GCP The Woman in Black, Theater 2 p.m.	<b>4</b>	<b>5</b> Gulfport Fresh Market 9 a.m.  Council Meeting City Hall, 7 p.m.	<b>6</b> SO49 Meeting Neighborhood Ctr 5:30 p.m. Planning and Zoning City Hall 6:30 p.m.	<b>7</b>  GCP The Woman in Black, Theater, 8 p.m.	<b>8</b> Gulfport Lions Shrimp Boil 4-8 p.m.  GCP The Woman in Black, Theater 8 p.m.	<b>9</b> Gulfport Area Chamber Pink Flamingo Tour  GCP The Woman in Black, Theater, 8 p.m.																																																																																				
<b>10</b> Daylight Savings  GCP The Woman in Black, Theater, 2 p.m.	<b>11</b>  Crime Watch Meeting Neighborhood Ctr 7 p.m.	<b>12</b> Gulfport Fresh Market 9 a.m.  <b>Municipal Election Day</b>	<b>13</b>  Board of Adjustment City Hall, 6:30 p.m.	<b>14</b>	<b>15</b>	<b>16</b> City wide Yard Sale Cleanup, Clam Bayou 9 a.m. Noon Antiques in the Park Clymer Park, 10 a.m. Art Walk, 6 10 p.m.																																																																																				
<b>17</b> St. Patrick's Day  GCP The Woman in Black, Theater 2 p.m.	<b>18</b>	<b>19</b> Gulfport Fresh Market 9 a.m.  Council Meeting City Hall, 7 p.m.	<b>20</b> Vernal equinox	<b>21</b>  Council Workshop City Hall C.E.R.T Mtg. Senior Center, 7 p.m.	<b>22</b>	<b>23</b>  City of Gulfport Nautical Flea Market Marina 7 2 p.m.																																																																																				
<b>24</b>	<b>25</b>	<b>26</b> Passover Gulfport Fresh Market 9 a.m.	<b>27</b>	<b>28</b>	<b>29</b> Good Friday	<b>30</b> Fun in the Sun Day Gulfport Recreation 10 a.m. Noon SpringFest 1 a.m. 8 p.m.																																																																																				
<b>31</b> Easter Sunrise Service Gulfport Beach		<b>February 2013</b> <table border="1"> <tr><td>S</td><td>M</td><td>T</td><td>W</td><td>Th</td><td>F</td><td>Sa</td></tr> <tr><td></td><td></td><td></td><td></td><td></td><td>1</td><td>2</td></tr> <tr><td>3</td><td>4</td><td>5</td><td>6</td><td>7</td><td>8</td><td>9</td></tr> <tr><td>10</td><td>11</td><td>12</td><td>13</td><td>14</td><td>15</td><td>16</td></tr> <tr><td>17</td><td>18</td><td>19</td><td>20</td><td>21</td><td>22</td><td>23</td></tr> <tr><td>24</td><td>25</td><td>26</td><td>27</td><td>28</td><td></td><td></td></tr> </table>		S	M	T	W	Th	F	Sa						1	2	3	4	5	6	7	8	9	10	11	12	13	14	15	16	17	18	19	20	21	22	23	24	25	26	27	28			<b>April 2013</b> <table border="1"> <tr><td>S</td><td>M</td><td>T</td><td>W</td><td>Th</td><td>F</td><td>Sa</td></tr> <tr><td></td><td>1</td><td>2</td><td>3</td><td>4</td><td>5</td><td>6</td></tr> <tr><td>7</td><td>8</td><td>9</td><td>10</td><td>11</td><td>12</td><td>13</td></tr> <tr><td>14</td><td>15</td><td>16</td><td>17</td><td>18</td><td>19</td><td>20</td></tr> <tr><td>21</td><td>22</td><td>23</td><td>24</td><td>25</td><td>26</td><td>27</td></tr> <tr><td>28</td><td>29</td><td>30</td><td></td><td></td><td></td><td></td></tr> </table>		S	M	T	W	Th	F	Sa		1	2	3	4	5	6	7	8	9	10	11	12	13	14	15	16	17	18	19	20	21	22	23	24	25	26	27	28	29	30					<b>Notes:</b>  Events subject to change
S	M	T	W	Th	F	Sa																																																																																				
					1	2																																																																																				
3	4	5	6	7	8	9																																																																																				
10	11	12	13	14	15	16																																																																																				
17	18	19	20	21	22	23																																																																																				
24	25	26	27	28																																																																																						
S	M	T	W	Th	F	Sa																																																																																				
	1	2	3	4	5	6																																																																																				
7	8	9	10	11	12	13																																																																																				
14	15	16	17	18	19	20																																																																																				
21	22	23	24	25	26	27																																																																																				
28	29	30																																																																																								



**Built in 1922, the Inn was originally known as the Hotel Dobler, then the Boca Ciega Inn. It was located where Veteran's Park is today.**

# APRIL 2013

Sunday	Monday	Tuesday	Wednesday	Thursday	Friday	Saturday																																																																																											
	<b>1</b> April Fool's Day  Historical Society Pot Luck Supper and Elections, Museum 6 p.m.	<b>2</b> Gulfport Fresh Market 9 a.m.  Council Meeting City Hall, 7 p.m.	<b>3</b>  Planning and Zoning City Hall, 6:30 p.m.	<b>4</b>	<b>5</b>  Art Walk, 6 10 p.m.	<b>6</b>  Gulfport Lions Pancake Breakfast 7-1 a.m.																																																																																											
<b>7</b>	<b>8</b>  Crime Watch Meeting Neighborhood Ctr 7 p.m.	<b>9</b> Gulfport Fresh Market 9 a.m.	<b>10</b>  SO49 Meeting Neighborhood Ctr 5:30 p.m. Board of Adjustment City Hall 6:30 p.m.	<b>11</b>  GCP A Flea in Her Ear Theater, 8 p.m.	<b>12</b>  GCP A Flea in Her Ear Theater 8 p.m.	<b>13</b>  GCP A Flea in Her Ear Theater 8 p.m.																																																																																											
<b>14</b>  GCP A Flea in Her Ear Theater 2 p.m.	<b>15</b> Taxes Due	<b>16</b> Gulfport Fresh Market 9 a.m.  Council Meeting City Hall 7 p.m.	<b>17</b>	<b>18</b> Council Workshop City Hall C.E.R.T Mtg. Senior Center 7 p.m. GCP A Flea in Her Ear Theater, 8 p.m.	<b>19</b>  GCP A Flea in Her Ear Theater, 8 p.m.	<b>20</b>  Oral Cancer Screening Walgreens, 10 a.m. <b>Art Walk, 6 10 p.m.</b> GCP A Flea in Her Ear Theater, 8 p.m.																																																																																											
<b>21</b>  GCP A Flea in Her Ear Theater, 2 p.m.	<b>22</b> Earth Day	<b>23</b> Gulfport Fresh Market 9 a.m.	<b>24</b> Admin Assist Day	<b>25</b>	<b>26</b>	<b>27</b>  GYC Multi-Hull Regatta Gulfport Beach																																																																																											
<b>28</b>  GYC Multi-Hull Regatta Gulfport Beach	<b>29</b>	<b>30</b> Gulfport Fresh Market 9 a.m.																																																																																															
		<b>March 2013</b> <table border="1"> <tr><td>S</td><td>M</td><td>T</td><td>W</td><td>Th</td><td>F</td><td>Sa</td></tr> <tr><td></td><td></td><td></td><td></td><td></td><td>1</td><td>2</td></tr> <tr><td>3</td><td>4</td><td>5</td><td>6</td><td>7</td><td>8</td><td>9</td></tr> <tr><td>10</td><td>11</td><td>12</td><td>13</td><td>14</td><td>15</td><td>16</td></tr> <tr><td>17</td><td>18</td><td>19</td><td>20</td><td>21</td><td>22</td><td>23</td></tr> <tr><td>24</td><td>25</td><td>26</td><td>27</td><td>28</td><td>29</td><td>30</td></tr> <tr><td>31</td><td></td><td></td><td></td><td></td><td></td><td></td></tr> </table>		S	M	T	W	Th	F	Sa						1	2	3	4	5	6	7	8	9	10	11	12	13	14	15	16	17	18	19	20	21	22	23	24	25	26	27	28	29	30	31							<b>May 2013</b> <table border="1"> <tr><td>S</td><td>M</td><td>T</td><td>W</td><td>Th</td><td>F</td><td>Sa</td></tr> <tr><td></td><td></td><td></td><td>1</td><td>2</td><td>3</td><td>4</td></tr> <tr><td>5</td><td>6</td><td>7</td><td>8</td><td>9</td><td>10</td><td>11</td></tr> <tr><td>12</td><td>13</td><td>14</td><td>15</td><td>16</td><td>17</td><td>18</td></tr> <tr><td>19</td><td>20</td><td>21</td><td>22</td><td>23</td><td>24</td><td>25</td></tr> <tr><td>26</td><td>27</td><td>28</td><td>29</td><td>30</td><td>31</td><td></td></tr> </table>		S	M	T	W	Th	F	Sa				1	2	3	4	5	6	7	8	9	10	11	12	13	14	15	16	17	18	19	20	21	22	23	24	25	26	27	28	29	30	31		<b>Notes:</b>     Events subject to change
S	M	T	W	Th	F	Sa																																																																																											
					1	2																																																																																											
3	4	5	6	7	8	9																																																																																											
10	11	12	13	14	15	16																																																																																											
17	18	19	20	21	22	23																																																																																											
24	25	26	27	28	29	30																																																																																											
31																																																																																																	
S	M	T	W	Th	F	Sa																																																																																											
			1	2	3	4																																																																																											
5	6	7	8	9	10	11																																																																																											
12	13	14	15	16	17	18																																																																																											
19	20	21	22	23	24	25																																																																																											
26	27	28	29	30	31																																																																																												



**The Root Beer Barrel, 5519 Shore Boulevard, 1950s.**

# MAY 2013

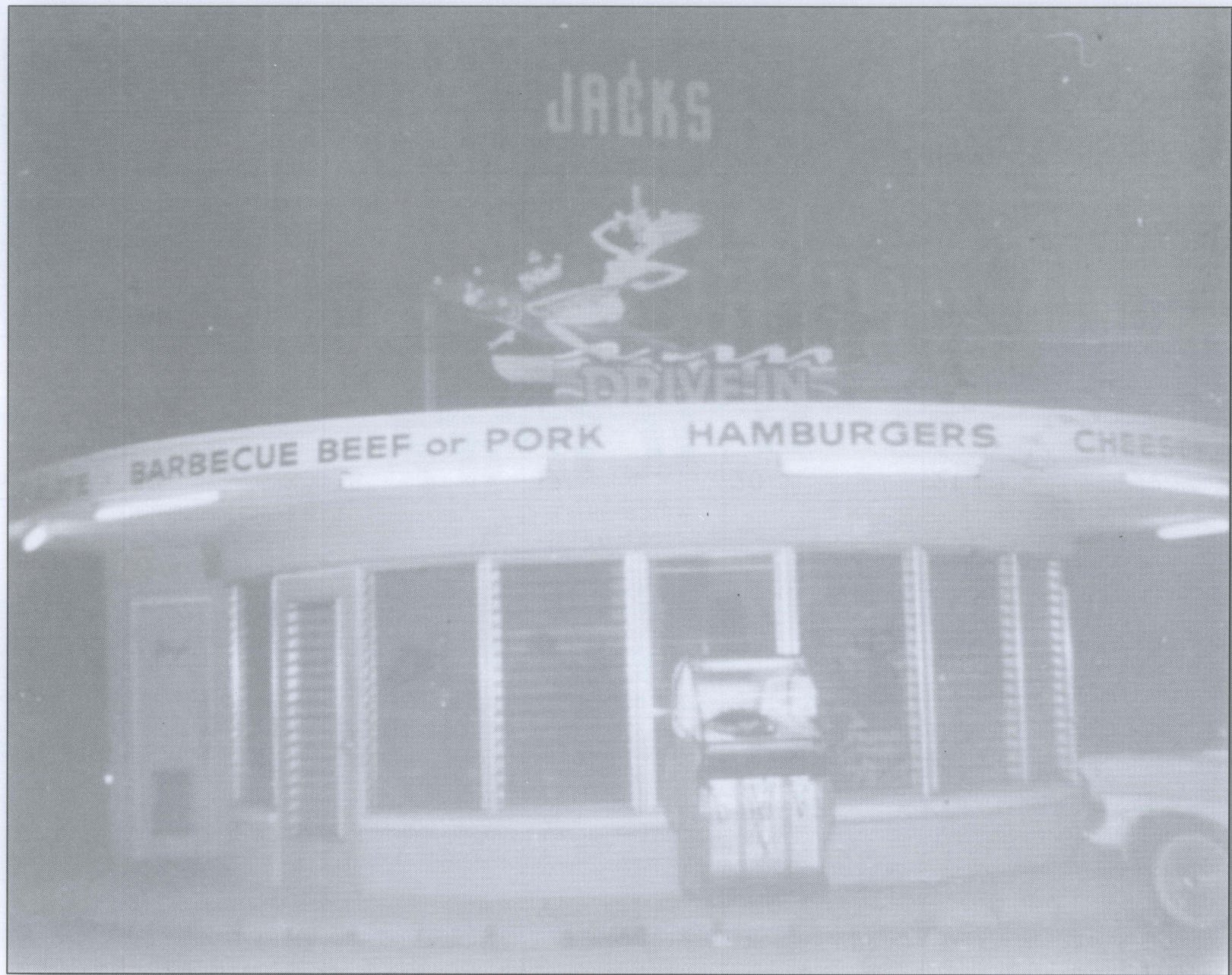
Sunday	Monday	Tuesday	Wednesday	Thursday	Friday	Saturday																																																																																											
			<b>1</b>  Planning and Zoning City Hall 6:30 p.m.	<b>2</b>	<b>3</b>  Art Walk, 6 10 p.m.	<b>4</b>																																																																																											
<b>5</b>	<b>6</b>	<b>7</b> Gulfport Fresh Market 9 a.m.  Council Meeting City Hall, 7 p.m.	<b>8</b>  SO49 Meeting Neighborhood Ctr 5:30 p.m. Board of Adjustment City Hall 6:30 p.m.	<b>9</b>	<b>10</b>	<b>11</b>  Gulfport Lions Pancake Breakfast 7 1 a.m.																																																																																											
<b>12</b> Mother's Day	<b>13</b>  Crime Watch Meeting Neighborhood Ctr., 7 p.m.	<b>14</b> Gulfport Fresh Market 9 a.m.	<b>15</b>  Historical Preservation City Hall 5:30 p.m.	<b>16</b>  Council Workshop City Hall C.E.R.T Mtg. Senior Center, 7 p.m.	<b>17</b>	<b>18</b>  Art Walk, 6 10 p.m.																																																																																											
<b>19</b>	<b>20</b>	<b>21</b> Gulfport Fresh Market 9 a.m.  Council Meeting City Hall, 7 p.m.	<b>22</b>	<b>23</b>  City of Gulfport Hurricane Seminar Catherine Hickman Theat. 7 p.m.	<b>24</b>	<b>25</b>																																																																																											
<b>26</b>	<b>27</b> Memorial Day CITY HALL CLOSED Regular trash pickup	<b>28</b> Gulfport Fresh Market 9 a.m.	<b>29</b>	<b>30</b>	<b>31</b>																																																																																												
		<b>April 2013</b> <table border="1"> <tr><td>S</td><td>M</td><td>T</td><td>W</td><td>Th</td><td>F</td><td>Sa</td></tr> <tr><td></td><td>1</td><td>2</td><td>3</td><td>4</td><td>5</td><td>6</td></tr> <tr><td>7</td><td>8</td><td>9</td><td>10</td><td>11</td><td>12</td><td>13</td></tr> <tr><td>14</td><td>15</td><td>16</td><td>17</td><td>18</td><td>19</td><td>20</td></tr> <tr><td>21</td><td>22</td><td>23</td><td>24</td><td>25</td><td>26</td><td>27</td></tr> <tr><td>28</td><td>29</td><td>30</td><td></td><td></td><td></td><td></td></tr> </table>		S	M	T	W	Th	F	Sa		1	2	3	4	5	6	7	8	9	10	11	12	13	14	15	16	17	18	19	20	21	22	23	24	25	26	27	28	29	30					<b>June 2013</b> <table border="1"> <tr><td>S</td><td>M</td><td>T</td><td>W</td><td>Th</td><td>F</td><td>Sa</td></tr> <tr><td></td><td></td><td></td><td></td><td></td><td></td><td>1</td></tr> <tr><td>2</td><td>3</td><td>4</td><td>5</td><td>6</td><td>7</td><td>8</td></tr> <tr><td>9</td><td>10</td><td>11</td><td>12</td><td>13</td><td>14</td><td>15</td></tr> <tr><td>16</td><td>17</td><td>18</td><td>19</td><td>20</td><td>21</td><td>22</td></tr> <tr><td>23</td><td>24</td><td>25</td><td>26</td><td>27</td><td>28</td><td>29</td></tr> <tr><td>30</td><td></td><td></td><td></td><td></td><td></td><td></td></tr> </table>		S	M	T	W	Th	F	Sa							1	2	3	4	5	6	7	8	9	10	11	12	13	14	15	16	17	18	19	20	21	22	23	24	25	26	27	28	29	30							<b>Notes:</b>  Events subject to change
S	M	T	W	Th	F	Sa																																																																																											
	1	2	3	4	5	6																																																																																											
7	8	9	10	11	12	13																																																																																											
14	15	16	17	18	19	20																																																																																											
21	22	23	24	25	26	27																																																																																											
28	29	30																																																																																															
S	M	T	W	Th	F	Sa																																																																																											
						1																																																																																											
2	3	4	5	6	7	8																																																																																											
9	10	11	12	13	14	15																																																																																											
16	17	18	19	20	21	22																																																																																											
23	24	25	26	27	28	29																																																																																											
30																																																																																																	



Commercial building at 2832-38 Beach Boulevard during the 1920s.

# JUNE 2013

Sunday	Monday	Tuesday	Wednesday	Thursday	Friday	Saturday																																																																																				
						1																																																																																				
2	3	4 Gulfport Fresh Market 9 a.m.  Council Meeting City Hall, 7 p.m.	5  SO49 Meeting Neighborhood Ctr 5:30 p.m. Planning and Zoning City Hall, 6:30 p.m.	6	7  Art Walk, 6 10 p.m.	8																																																																																				
9	10  Crime Watch Meeting Neighborhood Ctr , 7 p.m.	11 Gulfport Fresh Market 9 a.m.	12  Board of Adjustment City Hall, 6:30 p.m.	13	14 Flag Day City of Gulfport and Legion Post 125 Flag Retirement Ceremony Veteran's Park, 10 a.m.	15  Art Walk, 6 10 p.m.																																																																																				
16 Father's Day	17	18 Gulfport Fresh Market 9 a.m.  Council Meeting City Hall, 7 p.m	19	20  Council Workshop City Hall C.E.R.T Mtg Senior Center 7 p.m	21 June Solstice	22																																																																																				
23	24	25 Gulfport Fresh Market 9 a.m.	26	27	28	29																																																																																				
30		<p style="text-align: center;"><b>May 2013</b></p> <table border="1"> <tr><td>S</td><td>M</td><td>T</td><td>W</td><td>Th</td><td>F</td><td>Sa</td></tr> <tr><td></td><td></td><td></td><td>1</td><td>2</td><td>3</td><td>4</td></tr> <tr><td>5</td><td>6</td><td>7</td><td>8</td><td>9</td><td>10</td><td>11</td></tr> <tr><td>12</td><td>13</td><td>14</td><td>15</td><td>16</td><td>17</td><td>18</td></tr> <tr><td>19</td><td>20</td><td>21</td><td>22</td><td>23</td><td>24</td><td>25</td></tr> <tr><td>26</td><td>27</td><td>28</td><td>29</td><td>30</td><td>31</td><td></td></tr> </table>		S	M	T	W	Th	F	Sa				1	2	3	4	5	6	7	8	9	10	11	12	13	14	15	16	17	18	19	20	21	22	23	24	25	26	27	28	29	30	31		<p style="text-align: center;"><b>July 2013</b></p> <table border="1"> <tr><td>S</td><td>M</td><td>T</td><td>W</td><td>Th</td><td>F</td><td>Sa</td></tr> <tr><td></td><td>1</td><td>2</td><td>3</td><td>4</td><td>5</td><td>6</td></tr> <tr><td>7</td><td>8</td><td>9</td><td>10</td><td>11</td><td>12</td><td>13</td></tr> <tr><td>14</td><td>15</td><td>16</td><td>17</td><td>18</td><td>19</td><td>20</td></tr> <tr><td>21</td><td>22</td><td>23</td><td>24</td><td>25</td><td>26</td><td>27</td></tr> <tr><td>28</td><td>29</td><td>30</td><td>31</td><td></td><td></td><td></td></tr> </table>		S	M	T	W	Th	F	Sa		1	2	3	4	5	6	7	8	9	10	11	12	13	14	15	16	17	18	19	20	21	22	23	24	25	26	27	28	29	30	31				<p><b>Notes:</b></p> <p>Events subject to change</p>
S	M	T	W	Th	F	Sa																																																																																				
			1	2	3	4																																																																																				
5	6	7	8	9	10	11																																																																																				
12	13	14	15	16	17	18																																																																																				
19	20	21	22	23	24	25																																																																																				
26	27	28	29	30	31																																																																																					
S	M	T	W	Th	F	Sa																																																																																				
	1	2	3	4	5	6																																																																																				
7	8	9	10	11	12	13																																																																																				
14	15	16	17	18	19	20																																																																																				
21	22	23	24	25	26	27																																																																																				
28	29	30	31																																																																																							



**Jack's Seven Seas Drive In Restaurant, 2025 49<sup>th</sup> Street South, c. 1958.**



# JULY 2013

Sunday	Monday	Tuesday	Wednesday	Thursday	Friday	Saturday																																																																																											
	<b>1</b>	<b>2</b> Gulfport Fresh Market 9 a.m.  Council Meeting City Hall 7 p.m.	<b>3</b>  Planning and Zoning City Hall 6:30 p.m.	<b>4</b> Independence Day The City of Gulfport Celebrates July 4th All Day Long 8 a.m 9:30 p.m Check listings for schedule	<b>5</b>  Art Walk, 6 10 p.m.	<b>6</b>																																																																																											
<b>7</b>	<b>8</b>  Crime Watch Meeting Neighborhood Ctr 7 p.m.	<b>9</b> Ramadan begins Gulfport Fresh Market 9 a.m.	<b>10</b>  SO49 Meeting Neighborhood Ctr 5:30 p.m. Board of Adjustment City Hall 6:30 p.m.	<b>11</b>  GCP-13th Annual Summer One Acts Festival Theater 8 p.m.	<b>12</b>  GCP-13th Annual Summer One Acts Festival Theater 8 p.m.	<b>13</b>  GCP- 3th Annual Summer One Acts Festival Theater 8 p.m.																																																																																											
<b>14</b>  GCP-13th Annual Summer One Acts Festival Theater 2 p.m.	<b>15</b>	<b>16</b> Gulfport Fresh Market 9 a.m.  Council Meeting City Hall, 7 p.m.	<b>17</b>	<b>18</b> Council Workshop City Hall CERT Mtg. Sen Ctr 7 pm GCP-13th Annual Summer One Acts Festival Theater 8 p.m.	<b>19</b>  GCP-13th Annual Summer One Acts Festival Theater 8 p.m.	<b>20</b>  Art Walk, 6 10 p.m. GCP-13th Annual Summer One Acts Festival Theater 8 p.m.																																																																																											
<b>21</b>  GCP- 3th Annual Summer One Acts Festival Theater 2 p.m.	<b>22</b>	<b>23</b> Gulfport Fresh Market 9 a.m.	<b>24</b>	<b>25</b>	<b>26</b>	<b>27</b>																																																																																											
<b>28</b> Parents' Day	<b>29</b>	<b>30</b> Gulfport Fresh Market 9 a.m.	<b>31</b>																																																																																														
		<b>June 2013</b> <table border="1"> <tr><td>S</td><td>M</td><td>T</td><td>W</td><td>Th</td><td>F</td><td>Sa</td></tr> <tr><td></td><td></td><td></td><td></td><td></td><td></td><td>1</td></tr> <tr><td>2</td><td>3</td><td>4</td><td>5</td><td>6</td><td>7</td><td>8</td></tr> <tr><td>9</td><td>10</td><td>11</td><td>12</td><td>13</td><td>14</td><td>15</td></tr> <tr><td>16</td><td>17</td><td>18</td><td>19</td><td>20</td><td>21</td><td>22</td></tr> <tr><td>23</td><td>24</td><td>25</td><td>26</td><td>27</td><td>28</td><td>29</td></tr> <tr><td>30</td><td></td><td></td><td></td><td></td><td></td><td></td></tr> </table>		S	M	T	W	Th	F	Sa							1	2	3	4	5	6	7	8	9	10	11	12	13	14	15	16	17	18	19	20	21	22	23	24	25	26	27	28	29	30							<b>August 2013</b> <table border="1"> <tr><td>S</td><td>M</td><td>T</td><td>W</td><td>Th</td><td>F</td><td>Sa</td></tr> <tr><td></td><td></td><td></td><td></td><td>1</td><td>2</td><td>3</td></tr> <tr><td>4</td><td>5</td><td>6</td><td>7</td><td>8</td><td>9</td><td>10</td></tr> <tr><td>11</td><td>12</td><td>13</td><td>14</td><td>15</td><td>16</td><td>17</td></tr> <tr><td>18</td><td>19</td><td>20</td><td>21</td><td>22</td><td>23</td><td>24</td></tr> <tr><td>25</td><td>26</td><td>27</td><td>28</td><td>29</td><td>30</td><td>31</td></tr> </table>		S	M	T	W	Th	F	Sa					1	2	3	4	5	6	7	8	9	10	11	12	13	14	15	16	17	18	19	20	21	22	23	24	25	26	27	28	29	30	31	<b>Notes:</b>  Events subject to change
S	M	T	W	Th	F	Sa																																																																																											
						1																																																																																											
2	3	4	5	6	7	8																																																																																											
9	10	11	12	13	14	15																																																																																											
16	17	18	19	20	21	22																																																																																											
23	24	25	26	27	28	29																																																																																											
30																																																																																																	
S	M	T	W	Th	F	Sa																																																																																											
				1	2	3																																																																																											
4	5	6	7	8	9	10																																																																																											
11	12	13	14	15	16	17																																																																																											
18	19	20	21	22	23	24																																																																																											
25	26	27	28	29	30	31																																																																																											



The McLellan Clinic, 5619 Shore Boulevard, c. 1948.

# AUGUST 2013

Sunday	Monday	Tuesday	Wednesday	Thursday	Friday	Saturday																																																																																				
				1	2	3																																																																																				
					Art Walk, 6 - 10 p.m.																																																																																					
4	5	6 Gulfport Fresh Market 9 a.m. City of Gulfport National Night Out Council Meeting City Hall 7 p.m.	7 SO49 Meeting Neighborhood Ctr 5:30 p.m. Planning and Zoning City Hall 6:30 p.m.	8	9	10																																																																																				
11	12 Crime Watch Meeting Neighborhood Ctr 7 p.m.	13 Gulfport Fresh Market 9 a.m.	14 Board of Adjustment City Hall, 6:30 p.m.	15 Council Workshop City Hall C.E.R.T Mtg Senior Center 7 p.m.	16	17 Art Walk, 6 - 10 p.m.																																																																																				
18	19 Aviation Day	20 Gulfport Fresh Market 9 a.m. Council Meeting City Hall, 7 p.m.	21 Historical Preservation City Hall 5:30 p.m.	22	23	24																																																																																				
25	26	27 Gulfport Fresh Market 9 a.m.	28	29	30	31 Gulfport Merchants GeckoFest!																																																																																				
		<b>July 2013</b> <table border="1"> <tr><td>S</td><td>M</td><td>T</td><td>W</td><td>Th</td><td>F</td><td>Sa</td></tr> <tr><td>1</td><td>2</td><td>3</td><td>4</td><td>5</td><td>6</td><td></td></tr> <tr><td>7</td><td>8</td><td>9</td><td>10</td><td>11</td><td>12</td><td>13</td></tr> <tr><td>14</td><td>15</td><td>16</td><td>17</td><td>18</td><td>19</td><td>20</td></tr> <tr><td>21</td><td>22</td><td>23</td><td>24</td><td>25</td><td>26</td><td>27</td></tr> <tr><td>28</td><td>29</td><td>30</td><td>31</td><td></td><td></td><td></td></tr> </table>		S	M	T	W	Th	F	Sa	1	2	3	4	5	6		7	8	9	10	11	12	13	14	15	16	17	18	19	20	21	22	23	24	25	26	27	28	29	30	31				<b>September 2013</b> <table border="1"> <tr><td>S</td><td>M</td><td>T</td><td>W</td><td>Th</td><td>F</td><td>Sa</td></tr> <tr><td>1</td><td>2</td><td>3</td><td>4</td><td>5</td><td>6</td><td>7</td></tr> <tr><td>8</td><td>9</td><td>10</td><td>11</td><td>12</td><td>13</td><td>14</td></tr> <tr><td>15</td><td>16</td><td>17</td><td>18</td><td>19</td><td>20</td><td>21</td></tr> <tr><td>22</td><td>23</td><td>24</td><td>25</td><td>26</td><td>27</td><td>28</td></tr> <tr><td>29</td><td>30</td><td></td><td></td><td></td><td></td><td></td></tr> </table>		S	M	T	W	Th	F	Sa	1	2	3	4	5	6	7	8	9	10	11	12	13	14	15	16	17	18	19	20	21	22	23	24	25	26	27	28	29	30						<b>Notes:</b>  Events subject to change
S	M	T	W	Th	F	Sa																																																																																				
1	2	3	4	5	6																																																																																					
7	8	9	10	11	12	13																																																																																				
14	15	16	17	18	19	20																																																																																				
21	22	23	24	25	26	27																																																																																				
28	29	30	31																																																																																							
S	M	T	W	Th	F	Sa																																																																																				
1	2	3	4	5	6	7																																																																																				
8	9	10	11	12	13	14																																																																																				
15	16	17	18	19	20	21																																																																																				
22	23	24	25	26	27	28																																																																																				
29	30																																																																																									

**R.W. Caldwell's office was once located on Shore Boulevard**



**The business moved to its present location on Gulfport Boulevard in the 1950s.**

# SEPTEMBER 2013

Sunday	Monday	Tuesday	Wednesday	Thursday	Friday	Saturday																																																																																				
<b>1</b>	<b>2</b> Labor Day CITY HALL CLOSED Regular trash pickup Lions Fish Fry	<b>3</b> Gulfport Fresh Market 9 a.m.  Council Meeting City Hall 7 p.m.	<b>4</b>  Planning and Zoning City Hall, 6:30 p.m.	<b>5</b> Rosh Hashanah	<b>6</b>  Art Walk, 6 - 10 p.m.	<b>7</b> Golfport Links Parade Breakfast 7-11 a.m.																																																																																				
<b>8</b> Grandparents Day	<b>9</b>  Crime Watch Meeting Neighborhood Ctr 7 p.m.	<b>10</b> Gulfport Fresh Market 9 a.m.	<b>11</b> Patriot Day  SO49 Meeting Neighborhood Ctr 5:30 p.m. Board of Adjustment City Hall, 6:30 p.m.	<b>12</b>	<b>13</b>	<b>14</b> Yom Kippur																																																																																				
<b>15</b>	<b>16</b>	<b>17</b> Gulfport Fresh Market 9 a.m.  Council Meeting City Hall 7 p.m.	<b>18</b>	<b>19</b>  Council Workshop City Hall C.E.R.T Mtg. Senior Center 7 p.m.	<b>20</b>  Museum General Mtg. 7 p.m.	<b>21</b>  Art Walk, 6 - 10 p.m.																																																																																				
<b>22</b> Autumnal equinox	<b>23</b>	<b>24</b> Gulfport Fresh Market 9 a.m.	<b>25</b>	<b>26</b>	<b>27</b>	<b>28</b> Keep Gulfport Weird Triathlon  SO-49 Tangerine Blues Fest																																																																																				
<b>29</b>	<b>30</b>																																																																																									
		<b>August 2013</b> <table border="1"> <thead> <tr> <th>S</th> <th>M</th> <th>T</th> <th>W</th> <th>Th</th> <th>F</th> <th>Sa</th> </tr> </thead> <tbody> <tr> <td></td> <td></td> <td></td> <td></td> <td>1</td> <td>2</td> <td>3</td> </tr> <tr> <td>4</td> <td>5</td> <td>6</td> <td>7</td> <td>8</td> <td>9</td> <td>10</td> </tr> <tr> <td>11</td> <td>12</td> <td>13</td> <td>14</td> <td>15</td> <td>16</td> <td>17</td> </tr> <tr> <td>18</td> <td>19</td> <td>20</td> <td>21</td> <td>22</td> <td>23</td> <td>24</td> </tr> <tr> <td>25</td> <td>26</td> <td>27</td> <td>28</td> <td>29</td> <td>30</td> <td>31</td> </tr> </tbody> </table>		S	M	T	W	Th	F	Sa					1	2	3	4	5	6	7	8	9	10	11	12	13	14	15	16	17	18	19	20	21	22	23	24	25	26	27	28	29	30	31	<b>October 2013</b> <table border="1"> <thead> <tr> <th>S</th> <th>M</th> <th>T</th> <th>W</th> <th>Th</th> <th>F</th> <th>Sa</th> </tr> </thead> <tbody> <tr> <td></td> <td></td> <td>1</td> <td>2</td> <td>3</td> <td>4</td> <td>5</td> </tr> <tr> <td>6</td> <td>7</td> <td>8</td> <td>9</td> <td>10</td> <td>11</td> <td>12</td> </tr> <tr> <td>13</td> <td>14</td> <td>15</td> <td>16</td> <td>17</td> <td>18</td> <td>19</td> </tr> <tr> <td>20</td> <td>21</td> <td>22</td> <td>23</td> <td>24</td> <td>25</td> <td>26</td> </tr> <tr> <td>27</td> <td>28</td> <td>29</td> <td>30</td> <td>31</td> <td></td> <td></td> </tr> </tbody> </table>		S	M	T	W	Th	F	Sa			1	2	3	4	5	6	7	8	9	10	11	12	13	14	15	16	17	18	19	20	21	22	23	24	25	26	27	28	29	30	31			<b>Notes:</b>  Events subject to change
S	M	T	W	Th	F	Sa																																																																																				
				1	2	3																																																																																				
4	5	6	7	8	9	10																																																																																				
11	12	13	14	15	16	17																																																																																				
18	19	20	21	22	23	24																																																																																				
25	26	27	28	29	30	31																																																																																				
S	M	T	W	Th	F	Sa																																																																																				
		1	2	3	4	5																																																																																				
6	7	8	9	10	11	12																																																																																				
13	14	15	16	17	18	19																																																																																				
20	21	22	23	24	25	26																																																																																				
27	28	29	30	31																																																																																						



Cusson's Store, 2938 Beach Boulevard c. 1920.

# OCTOBER 2013

Sunday	Monday	Tuesday	Wednesday	Thursday	Friday	Saturday																																																																																				
		<b>1</b> Gulfport Fresh Market 9 a.m.  Council Meeting City Hall 7 p.m.	<b>2</b>  Planning and Zoning City Hall 6:30 p.m.	<b>3</b>	<b>4</b>  Art Walk, 6 - 10 p.m.	<b>5</b> Gulfport Lions Pancake Breakfast 7 - 1 a.m.																																																																																				
<b>6</b>	<b>7</b>	<b>8</b> Gulfport Fresh Market 9 a.m.	<b>9</b> SO49 Meeting Neighborhood Ctr 5:30 p.m. Board of Adjustment City Hall, 6:30 p.m.	<b>10</b>	<b>11</b>	<b>12</b> City Birthday Bash Museum 10 a.m. - 4 p.m.																																																																																				
<b>13</b>	<b>14</b> Columbus Day  Crime Watch Meeting Neighborhood Ctr 7 p.m.	<b>15</b> Gulfport Fresh Market 9 a.m.  Council Meeting City Hall, 7 p.m.	<b>16</b>	<b>17</b> Council Workshop City Hall C.E.R.T Mtg. Senior Center 7 p.m.	<b>18</b>	<b>19</b> Clam Bayou Cleanup 9 a.m. - noon Art Walk, 6 - 10 p.m.																																																																																				
<b>20</b>	<b>21</b>	<b>22</b> Gulfport Fresh Market 9 a.m.	<b>23</b>	<b>24</b> United Nations Day	<b>25</b>	<b>26</b>																																																																																				
<b>27</b>	<b>28</b>	<b>29</b> Gulfport Fresh Market 9 a.m.	<b>30</b>	<b>31</b> Halloween Spooktacular Halloween Bash Gulfport Recreation Ctr 7 - 9 p.m.																																																																																						
		<b>September 2013</b> <table border="1"> <tr><td>S</td><td>M</td><td>T</td><td>W</td><td>Th</td><td>F</td><td>Sa</td></tr> <tr><td>1</td><td>2</td><td>3</td><td>4</td><td>5</td><td>6</td><td>7</td></tr> <tr><td>8</td><td>9</td><td>10</td><td>11</td><td>12</td><td>13</td><td>14</td></tr> <tr><td>15</td><td>16</td><td>17</td><td>18</td><td>19</td><td>20</td><td>21</td></tr> <tr><td>22</td><td>23</td><td>24</td><td>25</td><td>26</td><td>27</td><td>28</td></tr> <tr><td>29</td><td>30</td><td></td><td></td><td></td><td></td><td></td></tr> </table>		S	M	T	W	Th	F	Sa	1	2	3	4	5	6	7	8	9	10	11	12	13	14	15	16	17	18	19	20	21	22	23	24	25	26	27	28	29	30						<b>November 2013</b> <table border="1"> <tr><td>S</td><td>M</td><td>T</td><td>W</td><td>Th</td><td>F</td><td>Sa</td></tr> <tr><td></td><td></td><td></td><td></td><td></td><td>1</td><td>2</td></tr> <tr><td>3</td><td>4</td><td>5</td><td>6</td><td>7</td><td>8</td><td>9</td></tr> <tr><td>10</td><td>11</td><td>12</td><td>13</td><td>14</td><td>15</td><td>16</td></tr> <tr><td>17</td><td>18</td><td>19</td><td>20</td><td>21</td><td>22</td><td>23</td></tr> <tr><td>24</td><td>25</td><td>26</td><td>27</td><td>28</td><td>29</td><td>30</td></tr> </table>		S	M	T	W	Th	F	Sa						1	2	3	4	5	6	7	8	9	10	11	12	13	14	15	16	17	18	19	20	21	22	23	24	25	26	27	28	29	30	<b>Notes:</b>  Events subject to change
S	M	T	W	Th	F	Sa																																																																																				
1	2	3	4	5	6	7																																																																																				
8	9	10	11	12	13	14																																																																																				
15	16	17	18	19	20	21																																																																																				
22	23	24	25	26	27	28																																																																																				
29	30																																																																																									
S	M	T	W	Th	F	Sa																																																																																				
					1	2																																																																																				
3	4	5	6	7	8	9																																																																																				
10	11	12	13	14	15	16																																																																																				
17	18	19	20	21	22	23																																																																																				
24	25	26	27	28	29	30																																																																																				



**Hickman Realtor on the corner of Beach Boulevard and Shore Boulevard**



# NOVEMBER 2013

Sunday	Monday	Tuesday	Wednesday	Thursday	Friday	Saturday																																																																																				
					1 Art Walk, 6 10 p.m.	2																																																																																				
3 Daylight Savings	4	5 Gulfport Fresh Market 9 a.m.  Council Meeting City Hall 7 p.m.	6 SO49 Meeting Neighborhood Ctr 5:30 p.m. Planning and Zoning City Hall 6.30 p.m.	7	8	9																																																																																				
10	11 Veterans Day CITY HALL CLOSED Regular trash pickup  Crime Watch Meeting Neighborhood Ctr 7 p.m.	12 Gulfport Fresh Market 9 a.m.	13  Board of Adjustment City Hall, 6:30 p.m.	14	15	16  Art Walk, 6 10 p.m.																																																																																				
17	18	19 Gulfport Fresh Market 9 a.m.  Council Meeting City Hall 7 p.m.	20	21 Council Workshop City Hall C.E.R.T Mtg Senior Center 7 p.m.	22	23																																																																																				
24	25	26 Gulfport Fresh Market 9 a.m.	27 No Wednesday yard pickup this week	28 Thanksgiving Chanukkah CITY HALL CLOSED Thursday's trash pickup will be on Wed Nov 27	29 CITY HALL CLOSED Regular trash pickup	30																																																																																				
		<b>October 2013</b> <table border="1"> <tr><td>S</td><td>M</td><td>T</td><td>W</td><td>Th</td><td>F</td><td>Sa</td></tr> <tr><td></td><td></td><td>1</td><td>2</td><td>3</td><td>4</td><td>5</td></tr> <tr><td>6</td><td>7</td><td>8</td><td>9</td><td>10</td><td>11</td><td>12</td></tr> <tr><td>13</td><td>14</td><td>15</td><td>16</td><td>17</td><td>18</td><td>19</td></tr> <tr><td>20</td><td>21</td><td>22</td><td>23</td><td>24</td><td>25</td><td>26</td></tr> <tr><td>27</td><td>28</td><td>29</td><td>30</td><td>31</td><td></td><td></td></tr> </table>		S	M	T	W	Th	F	Sa			1	2	3	4	5	6	7	8	9	10	11	12	13	14	15	16	17	18	19	20	21	22	23	24	25	26	27	28	29	30	31			<b>December 2013</b> <table border="1"> <tr><td>S</td><td>M</td><td>T</td><td>W</td><td>Th</td><td>F</td><td>Sa</td></tr> <tr><td>1</td><td>2</td><td>3</td><td>4</td><td>5</td><td>6</td><td>7</td></tr> <tr><td>8</td><td>9</td><td>10</td><td>11</td><td>12</td><td>13</td><td>14</td></tr> <tr><td>15</td><td>16</td><td>17</td><td>18</td><td>19</td><td>20</td><td>21</td></tr> <tr><td>22</td><td>23</td><td>24</td><td>25</td><td>26</td><td>27</td><td>28</td></tr> <tr><td>29</td><td>30</td><td>31</td><td></td><td></td><td></td><td></td></tr> </table>		S	M	T	W	Th	F	Sa	1	2	3	4	5	6	7	8	9	10	11	12	13	14	15	16	17	18	19	20	21	22	23	24	25	26	27	28	29	30	31					<b>Notes:</b>  Events subject to change
S	M	T	W	Th	F	Sa																																																																																				
		1	2	3	4	5																																																																																				
6	7	8	9	10	11	12																																																																																				
13	14	15	16	17	18	19																																																																																				
20	21	22	23	24	25	26																																																																																				
27	28	29	30	31																																																																																						
S	M	T	W	Th	F	Sa																																																																																				
1	2	3	4	5	6	7																																																																																				
8	9	10	11	12	13	14																																																																																				
15	16	17	18	19	20	21																																																																																				
22	23	24	25	26	27	28																																																																																				
29	30	31																																																																																								



**The Rolyat Hotel was built in 1925. Today it is the Stetson University  
College of Law.**

# DECEMBER 2013

Sunday	Monday	Tuesday	Wednesday	Thursday	Friday	Saturday																																																																																				
<b>1</b>	<b>2</b>	<b>3</b> Gulfport Fresh Market 9 a.m.	<b>4</b>	<b>5</b>	<b>6</b>	<b>7</b>																																																																																				
		Council Meeting City Hall, 7 p.m.	Planning and Zoning City Hall, 6:30 p.m.		Art Walk, 6 - 10 p.m.																																																																																					
<b>8</b>	<b>9</b>	<b>10</b> Gulfport Fresh Market 9 a.m.	<b>11</b>	<b>12</b>	<b>13</b>	<b>14</b>																																																																																				
	Crime Watch Meeting Neighborhood Ctr 7 p.m.		SO49 Meeting Neighborhood Ctr 5:30 p.m. Board of Adjustment City Hall 6:30 p.m.		Historical Society Christmas Party Museum, 7 p.m.																																																																																					
<b>15</b>	<b>16</b>	<b>17</b> Gulfport Fresh Market 9 a.m.	<b>18</b>	<b>19</b>	<b>20</b>	<b>21</b> Dec. Solstice																																																																																				
		Council Meeting City Hall, 7 p.m.		Council Workshop City Hall C.E.R.T Mtg Senior Center, 7 p.m.		Art Walk, 6 - 10 p.m.																																																																																				
<b>22</b>	<b>23</b>	<b>24</b> Christmas Eve Gulfport Fresh Market 9 a.m.	<b>25</b> Christmas Day <b>CITY HALL CLOSED</b>	<b>26</b> Kwanzaa begins	<b>27</b>	<b>28</b>																																																																																				
<b>29</b>	<b>30</b>	<b>31</b> New Year's Eve Gulfport Fresh Market 9 a.m.																																																																																								
		<b>November 2013</b> <table border="1"> <thead> <tr> <th>S</th> <th>M</th> <th>T</th> <th>W</th> <th>Th</th> <th>F</th> <th>Sa</th> </tr> </thead> <tbody> <tr> <td></td> <td></td> <td></td> <td></td> <td></td> <td>1</td> <td>2</td> </tr> <tr> <td>3</td> <td>4</td> <td>5</td> <td>6</td> <td>7</td> <td>8</td> <td>9</td> </tr> <tr> <td>10</td> <td>11</td> <td>12</td> <td>13</td> <td>14</td> <td>15</td> <td>16</td> </tr> <tr> <td>17</td> <td>18</td> <td>19</td> <td>20</td> <td>21</td> <td>22</td> <td>23</td> </tr> <tr> <td>24</td> <td>25</td> <td>26</td> <td>27</td> <td>28</td> <td>29</td> <td>30</td> </tr> </tbody> </table>		S	M	T	W	Th	F	Sa						1	2	3	4	5	6	7	8	9	10	11	12	13	14	15	16	17	18	19	20	21	22	23	24	25	26	27	28	29	30	<b>January 2014</b> <table border="1"> <thead> <tr> <th>S</th> <th>M</th> <th>T</th> <th>W</th> <th>Th</th> <th>F</th> <th>Sa</th> </tr> </thead> <tbody> <tr> <td></td> <td></td> <td></td> <td>1</td> <td>2</td> <td>3</td> <td>4</td> </tr> <tr> <td>5</td> <td>6</td> <td>7</td> <td>8</td> <td>9</td> <td>10</td> <td>11</td> </tr> <tr> <td>12</td> <td>13</td> <td>14</td> <td>15</td> <td>16</td> <td>17</td> <td>18</td> </tr> <tr> <td>19</td> <td>20</td> <td>21</td> <td>22</td> <td>23</td> <td>24</td> <td>25</td> </tr> <tr> <td>26</td> <td>27</td> <td>28</td> <td>29</td> <td>30</td> <td>31</td> <td></td> </tr> </tbody> </table>		S	M	T	W	Th	F	Sa				1	2	3	4	5	6	7	8	9	10	11	12	13	14	15	16	17	18	19	20	21	22	23	24	25	26	27	28	29	30	31		<b>Notes:</b>  Events subject to change
S	M	T	W	Th	F	Sa																																																																																				
					1	2																																																																																				
3	4	5	6	7	8	9																																																																																				
10	11	12	13	14	15	16																																																																																				
17	18	19	20	21	22	23																																																																																				
24	25	26	27	28	29	30																																																																																				
S	M	T	W	Th	F	Sa																																																																																				
			1	2	3	4																																																																																				
5	6	7	8	9	10	11																																																																																				
12	13	14	15	16	17	18																																																																																				
19	20	21	22	23	24	25																																																																																				
26	27	28	29	30	31																																																																																					

# Clubs and Organizations

LOCAL ORGANIZATIONS	MEETING DATE/TIME	MEETING LOCATION	ADDRESS	PHONE
1 <sup>st</sup> Florida Frontiers	Every 4 <sup>th</sup> Thursday	Gulfport Arts Center	2726 54th St. S. 33707	744-7051
49 <sup>th</sup> St. S. Business Association (SO49)	Every 2 <sup>nd</sup> Wednesday, 5:30 p.m Neighborhood Center	Gulfport Neighborhood Center	1617 49 <sup>th</sup> St. S. 33707	515-4941
Andy Anderson Post 125	3 <sup>rd</sup> Mon 6:30 pm Ext. Mtg 7 pm General	American Legion Hall	6440 5 <sup>th</sup> Ave. S. 33707	347-6085
Andy Anderson Post 125 Ladies Auxiliary	2 <sup>nd</sup> Tues. 6:30 pm Ext. Mtg. 7 pm General	American Legion Hall	6440 5 <sup>th</sup> Ave. S. 33707	347-6085
American Legion, Son's of	Last Mon. 7 pm	American Legion Hall	6440 5 <sup>th</sup> Ave. S. 33707	347-6085
Boca Ciega Yacht Club	3 <sup>rd</sup> Frid. 8 pm	Yacht Club	4600 Tifton Dr. S. 33711	321-7295
C.E.R.T.	3 <sup>rd</sup> Mon.	Senior Center	2401 53 <sup>rd</sup> St. S. 33707	893-1062
Circle of Friends of the Gulfport Library	Thursdays, 10 a.m. (Friends Room)	Gulfport Library	5501 28 <sup>th</sup> Ave. S. 33707	384-4171
City of Imagination	TBA	Gulfport Arts Center	2726 54th St. S	686-2564
Growing Green-Peaceful Plate	TBA	TBA	www.peacefulplate.org peaceful.plate@yahoo.com	557-5572
Gulfport Area Chamber of Commerce	Mixers – 3 <sup>rd</sup> Thurs. , 5:30 p.m. Board Mtg. 3 <sup>rd</sup> Thurs. 9 a.m.	TBA	4926 Gulfport Blvd. S. P.O. Box 5212, 33737	344-3711
Gulfport Community Players, Inc.	To Be Announced Advanced Ticket Sales	Back Door Theater Catherine Hickman Theater	4919 17 <sup>th</sup> Ave. S. 33707 5501 26 <sup>th</sup> Ave. S.	322-0316 322-0316
Gulfport Crime Watch	2 <sup>nd</sup> Mon., 7 p.m.	Neighborhood Center	1617 49 <sup>th</sup> St. S.	327-3509
GULFPORT HISTORICAL SOCIETY, INC & MUSEUM	Museum Hours: Mon.-Thur 2-4 p.m. Saturdays: 10 a.m – Noon Closed July & August	GULFPORT HISTORICAL MUSEUM	MAILING: P.O. BOX 5152, 33737 5301 28 <sup>TH</sup> AVE. S. 33707	321-0505
Gulfport Lion's Club	2 <sup>nd</sup> & 4 <sup>th</sup> Tues. 7 pm	Gulfport Lion's Center	4630 Tifton Dr S. 33711	321-5717
Gulfport Merchants Association	2 <sup>nd</sup> Monday of the month	TBA - call for monthly location	Accounting Results, 6514 Central Ave., St. Petersburg, FL 33707	667-7531
Gulfport Softball Boomerangs	Tues., Thurs. & Sat. 8 am – Noon	Hoyt Field	56 <sup>th</sup> St. S. & 23 <sup>rd</sup> Ave. S.	588-0404
Gulfport Yacht Club	3 <sup>rd</sup> Wednesday of each month	4638 Del Rio Way S.	4638 Del Rio Way S.	321-8364
Knights of Columbus Plus XII Council 5131	4 <sup>th</sup> Tuesday 7 p.m.	Holy Name Church Goodman Center	58 <sup>th</sup> & 15 <sup>th</sup> Ave. S.	347-9989

*Meetings – Subject to change. Please call to confirm.*

# Clubs and Organizations continued...

LOCAL ORGANIZATIONS	MEETING DATE/TIME	MEETING LOCATION	ADDRESS	PHONE
Little League Baseball	March-June/September-November	Lum Atkinson Field Jon	Tangerine & 55 <sup>th</sup> St. S.	656-8472
T-Ball, Minor Ball, Major Ball	Ages 5-16 Boy/Girls	Little League Field Kim	Tangerine & 55 <sup>th</sup> St. S.	688-4878
Senior Ball, Big League Ball	To Be Announced	Hoyt Field Bruce	56 <sup>th</sup> St. S. & 23 <sup>rd</sup> Ave. S.	327-7383
Women's Softball	May-Sept. 7-10 pm	Hoyt Field John Lapham (Rec. Ctr )	56 <sup>th</sup> St. S. & 23 <sup>rd</sup> Ave. S.	893-1079
<b>SCOUTING</b>		<b>SCOUT HALL</b>		
Cub Scout Pack 300 7-9 yrs.	Tues. 6- 8:30 pm	Frank Zigmund	5315 28 <sup>th</sup> Ave. S.	364-0977
Cub Scout Pack 300	Wed 6- 8.30 pm	Frank Zigmund	5315 28 <sup>th</sup> Ave. S.	364-0977
Girl Scout Troop 900	Every other Fri 6:30 – 9 pm	Denise Chapmen	5315 28 <sup>th</sup> Ave. S.	482-5487
Brownies Troop 824	Tues. 2:45 – 4:45 pm	Kristen Maselli	5315 28 <sup>th</sup> Ave. S.	743-5008
Girl Scout Troup 987 & 989	Mon. 6:30 - 8 p.m.	Sharon Smith Karen Macauley	5315 28 <sup>th</sup> Ave. S.	432-6133 525-3937
Brownies Troup 997	Wed. 4:15 -6:15 p.m.	Cheryl Hunt	5315 28 <sup>th</sup> Ave. S.	326-2838
Fire Explorers (teens)	Call for dates and time	Fire Station	5314 23 <sup>rd</sup> Ave. S. 33707	893-1062
Police Explorers (teens)	Mon. 7 p.m	Police Dept. Officer Jennifer Crowson	2401 53 <sup>rd</sup> St. S. 33707	893-1049
Sea Explorers (teens)	Sun. 7 p.m	B.C.Y.C. - Tony Angle	4600 Tifton Dr. S. 33711	345-9837
Senior Center Foundation	Last Thursday of the Month – 8:30 a.m.	Senior Center	5501 27 <sup>th</sup> Ave. S.	893-1231
Teen Council, Gulfport	3 <sup>rd</sup> Thursday of the Month – 4:45 p.m.	City Hall	2401 53 <sup>rd</sup> St. S.	893-1592
Women's Club of Gulfport GFWC & FFWC Affiliated	2 <sup>nd</sup> Wed. at Noon – Oct. – May	Town Shores Club House	3210 59 <sup>th</sup> St. S.	345-9491

# Places of Worship

LOCAL ORGANIZATIONS	MEETING	ADDRESS	PHONE
<b>Church of Christ</b>		<b>Holy Name Church</b>	
901 49 <sup>th</sup> Street South		5800 15 <sup>th</sup> Avenue South	
321-2721		347-9989	
<b>The Church of Jesus Christ</b>		<b>Jehovah's Witnesses Gulfport Congregation</b>	
5425 Gulfport Blvd.		1219 53 <sup>rd</sup> Street South	
321-9261		321-3862	
<b>Congregation Beth Sholom</b>		<b>Life Empowerment Worship Center</b>	
1844 54 <sup>th</sup> Street South		838 49 <sup>th</sup> St.	
321-3380		321-5433	
<b>Faith Cathedral International Church</b>		<b>St Luke Church of God Ministry</b>	
1617 49 <sup>th</sup> Street South		5213 13 <sup>th</sup> Ave. S.	
866-8469		323-0726	
<b>First United Methodist Church</b>		<b>Slavic Evangelical Baptist Church</b>	
2728 53 <sup>rd</sup> Street South		2728 53 <sup>rd</sup> St. S.	
321-3620		321-3620	
<b>Gulfport Presbyterian Church</b>		<b>Southside Church of Jesus Christ</b>	
5313 27 <sup>th</sup> Avenue South		5425 Gulfport Blvd. S.	
321-8086		322-5650	
<b>Gulfport Church of the Nazarene</b>		<b>Union Missionary Baptist</b>	
1000 55 <sup>th</sup> St S.		1100 49 <sup>th</sup> St.	
321-2721		321-7355	

# Notes

FROM:

TO:

**Cover image: Night time on Shore Boulevard in the 1950s**  
**2012-2013 Calendar Theme: Historic Businesses From Gulfport**

---

**Published by the City of Gulfport and the Gulfport Historical Society, Editor: Gail Biron**  
**Co-Editor, Consultant and images provide by: Lynne Brown, Gulfport Historical Society**

**FROM:** \_\_\_\_\_  
\_\_\_\_\_  
\_\_\_\_\_  
\_\_\_\_\_

**TO:** \_\_\_\_\_  
\_\_\_\_\_  
\_\_\_\_\_  
\_\_\_\_\_

