

Gulfport Historical Calendar



Postcards from Gulfport!

October 2011 – December 2012

CITY GOVERNMENT

Your Elected Officials



David Hastings
Vice Mayor, Ward 1



Mike Yakes, Mayor



Barbara Banno, Ward 2



Jennifer Salmon
Ward 3



Sam Henderson
Ward 4

A FULL SERVICE CITY

Where to reach us

911 – POLICE – FIRE – PARAMEDICS – EMERGENCY – 911

Police – Fire – EMS (Non-Emergency)	893-1030	Utility Billing	893-1000
City Hall and General Information	893-1000	Building/Zoning/Code Enforcement	893-1024
City Manager	893-1009	Sanitation/Trash Pick-up	893-1083
City Clerk	893-1012	Recreation Center	893-1068
Senior Center	893-2237	Marina/Ship Store	893-1071
Senior Center Special Events Line	893-5657	Library	893-1074
G.E.M.S.	893-2242	Casino/Theater	893-1070
Reassurance	893-2237	C.E.R.T.	893-1062

- City Hall (2401 53rd. St. S.) is the location for paying Water/Sewer, Electric and Bright House Cable Bills.
- Reassurance Program provides daily contact for residents living alone.
- G.E.M.S.(Gulfport Extended Mini-Bus Service) provides transportation from home to doctor or store for elderly and/or disabled.
- Senior Center provides congregate dining and food commodities, daily social activities & programs, events, as well as assistance with Social Services, Social Security, Income Taxes and Exercise programs.
- Recreation division provides classes and activities for all ages. Programs for children from age 3 to age 17: Tot Time provides 2,3 and 5 day programs, School Year Child Care provides after school activities from Kindergarten to 5th grade with transportation from Gulfport Elementary, Bear Creek and Pasadena Fundamental, Teen Night provides a fun and safe way for teens to meet with activities and field trips 3 nights a week (Monday, Wednesday, Friday, 6 – 9 p.m.)
- At the Library, check out audio/video as well as books, free Wi-Fi for your laptop, sign up to use the Internet, enjoy free programs.
- Municipal Marina (5330 23rd St. S.) provides a boat launch, fuel, pump outs, moorings rentals and food/drink supplies.
- Building permits, Occupational Licenses, inspections can be obtained at the Public Services Building, 5330 23rd St. S.
- Catherine Hickman Theater available for live performance and rentals as well as the Casino Ballroom.
- C.E.R.T. (Citizen Emergency Response Team) Volunteers to supplement Police, Fire and Emergency Response.
- Police and Fire Explorer Scout programs for ages 14 to 21.
- Free security surveys for City residents and businesses by a Police Officer.
- Free single family home Fire and Pool safety inspections by the Fire Department.
- For additional information, visit www.mygulfport.us

Holiday Sanitation Schedule

VETERAN'S DAY - FRIDAY, NOVEMBER 11, 2011 - No Change in Schedule

THANKSGIVING DAY - THURSDAY, NOVEMBER 24, 2011

Thursday's pickup will be on Wednesday, November 23

Friday's pickup will remain on schedule – No Yard pickup this week

CHRISTMAS DAY - SUNDAY, DECEMBER 25, 2011 - No Change in Schedule

NEW YEAR'S DAY - SUNDAY, JANUARY 1, 2012 - No Change in Schedule

MARTIN LUTHER KING JR. DAY - MONDAY, JANUARY 16, 2012 - No Change in Schedule

MEMORIAL DAY - MONDAY, MAY 28, 2012 - No Change in Schedule

INDEPENDENCE DAY - WEDNESDAY, JULY 4, 2012

No Yard Waste pickup on Wednesday, July 4, 2012

LABOR DAY - MONDAY, SEPTEMBER 3, 2012

No Change in Schedule

VETERANS DAY - SUNDAY, NOVEMBER 11, 2012

No Change in Schedule

THANKSGIVING DAY - THURSDAY, NOVEMBER 22, 2012

Thursday's Pickup will be on Wednesday, November 21, 2012

Friday's Pickup will remain on Schedule

No Yard Waste Pickup this week

CHRISTMAS DAY - TUESDAY, DECEMBER 25, 2012

Tuesday's Pickup will be on Wednesday, December 26

No Yard Waste Pickup this week

Gulfport Historical Society, Inc.

OFFICERS OF THE GULFPORT HISTORICAL SOCIETY, INC.

President	Judy Ryerson
Vice President	Priscilla Hoon
Secretary	Carol Valdes
Treasurer	Christine Brown

BOARD MEMBERS

Catherine Culler	Lynne Brown
Marie Gsell	Mary Stull
Miki Vaughan	

MUSEUM STAFF

Historian	Lynne Brown
Curator	Miki Vaughan
Head Docent	Marie Gsell
Newsletter Editor	Judy Ryerson

The Gulfport Historical Society was incorporated under the laws of the State of Florida as a not-for-profit association in 1981, with its major function dedicated to the operation of the Gulfport Historical Museum, where data and artifacts concerning the history of Gulfport could be collected, preserved, and exhibited for the community. The Gulfport Historical Museum is located at 5301 28th Avenue South and serves as a resource of research material for both individual citizens and historians. Our hours of operation are from 2 p.m. – 4 p.m. Monday through Friday and 10 a.m. – Noon on Saturday.

Are you interested in who your little bungalow was owned by? Peruse on the Historical Society public laptop for your information. On the new website, <http://gulfporthistoricalsociety.org> you will find much about Gulfport's history. The Society currently has three volumes of published Gulfport History and also publishes a quarterly newsletter, and provides informative programs for its members and guests. We have over 3000 names in the Gulfport genealogy listing of the first families. In addition, the *Nostalgic Birthday Bash* (Saturday, October 8, 2011) will mark its 101 years celebrating the anniversary of Gulfport Incorporation on October 12, 1910. Enjoy a Gulfport tradition of fish fry, mullet toss, antique appraisals and a trolley tour of Gulfport!

Brief Note on Harry Thorne – Postcard Photographer



Harry and Kathryn Thorne arrived in 1922 from Belmar, NJ, with their two young children, Robert and Barbara. Harry was the official press photographer of several professional sports teams, including the New York Yankees. He set up a studio next to his home at 5325 31st Avenue and over the next 25 years took hundreds of photos of Gulfport, making many of them into postcards marked with his signature, "Thorne." After his death in 1953, it was said that his wife burned all the negatives.



Looking at the old pier from the Gulfport shore.
A 1920s Harry Thorne postcard.

OCTOBER 2011

Sunday	Monday	Tuesday	Wednesday	Thursday	Friday	Saturday																																																																																					
*Bring the kids to The Gulfport Recreation Center for the Spooktakular Halloween event on Monday, October 31, 7 p.m.Games, prizes, costumer contest, haunted house, tots boo room and much more! Pizza, popcorn and drinks for purchase at the Goolish snack bar! Call 727-893-1068 for more information.						1 Lions Spagetti Supper																																																																																					
2	3	4 Gulfport Fresh Market 9 a.m. Blessing of the Animals Senior Center Council Meeting City Hall, 7 p.m.	5 Planning and Zoning City Hall, 6:30 p.m.	6	7 City of Imagination Art Exhibit Opening Reception, Theater 6 p.m. Art Walk, 6 - 10 p.m.	8 Yom Kippur Gulfport Birthday Bash! Historical Museum 11 a.m. - 4 p.m.																																																																																					
9	10 Columbus Day Senior Center Birthday Celebration Crime Watch Mtg. Neighborhood Ctr., 7 p.m.	11 Gulfport Fresh Market 9 a.m.	12 Board of Adjustment City Hall, 6:30 p.m.	13	14	15 Clam Bayou Cleanup 9 a.m. Hist. Museum Bd. Mtg. 10 am COI Mask Market Kick off Party Gulfport Arts Center 3 p.m. Art Walk, 6 10 p.m.																																																																																					
16	17	18 Gulfport Fresh Market 9 a.m. Council Meeting City Hall, 7 p.m.	19 Historic Preservation Museum, 5:30 p.m.	20 Holy Name Octoberfest C.E.R.T Mtg. City Hall, 6:30 p.m.	21 Merchants Waterfront Social, Casino, 5 p.m. Holy Name Octoberfest	22 Holy Name Octoberfest																																																																																					
23 Holy Name Octoberfest	24 United Nations Day	25 Gulfport Fresh Market 9 a.m.	26	27 Council Workshop	28 Boca Ciega H.S. Home Coming Festivities Una VOice Men's Choral Group 7 p.m., Theater	29																																																																																					
30	31 Halloween *Spooktakular Halloween Bash at the Gulfport Rec. Center, 7 p.m.	September 2011 <table><tr><td>S</td><td>M</td><td>T</td><td>W</td><td>Th</td><td>F</td><td>Sa</td></tr><tr><td></td><td></td><td></td><td></td><td>1</td><td>2</td><td>3</td></tr><tr><td>4</td><td>5</td><td>6</td><td>7</td><td>8</td><td>9</td><td>10</td></tr><tr><td>11</td><td>12</td><td>13</td><td>14</td><td>15</td><td>16</td><td>17</td></tr><tr><td>18</td><td>19</td><td>20</td><td>21</td><td>22</td><td>23</td><td>24</td></tr><tr><td>25</td><td>26</td><td>27</td><td>28</td><td>29</td><td>30</td><td></td></tr></table>			S	M	T	W	Th	F	Sa					1	2	3	4	5	6	7	8	9	10	11	12	13	14	15	16	17	18	19	20	21	22	23	24	25	26	27	28	29	30		November 2011 <table><tr><td>S</td><td>M</td><td>T</td><td>W</td><td>Th</td><td>F</td><td>Sa</td></tr><tr><td></td><td></td><td>1</td><td>2</td><td>3</td><td>4</td><td>5</td></tr><tr><td>6</td><td>7</td><td>8</td><td>9</td><td>10</td><td>11</td><td>12</td></tr><tr><td>13</td><td>14</td><td>15</td><td>16</td><td>17</td><td>18</td><td>19</td></tr><tr><td>20</td><td>21</td><td>22</td><td>23</td><td>24</td><td>25</td><td>26</td></tr><tr><td>27</td><td>28</td><td>29</td><td>30</td><td></td><td></td><td></td></tr></table>		S	M	T	W	Th	F	Sa			1	2	3	4	5	6	7	8	9	10	11	12	13	14	15	16	17	18	19	20	21	22	23	24	25	26	27	28	29	30				Notes:
S	M	T	W	Th	F	Sa																																																																																					
				1	2	3																																																																																					
4	5	6	7	8	9	10																																																																																					
11	12	13	14	15	16	17																																																																																					
18	19	20	21	22	23	24																																																																																					
25	26	27	28	29	30																																																																																						
S	M	T	W	Th	F	Sa																																																																																					
		1	2	3	4	5																																																																																					
6	7	8	9	10	11	12																																																																																					
13	14	15	16	17	18	19																																																																																					
20	21	22	23	24	25	26																																																																																					
27	28	29	30																																																																																								



The Gulfport Street Car made its final route in 1949.

NOVEMBER 2011

Sunday	Monday	Tuesday	Wednesday	Thursday	Friday	Saturday																																																																																																			
	Police Department begin collecting for OPERATION SANTA! To help, call 893-1030	1 Gulfport Fresh Market 9 a.m. Council Meeting City Hall, 7 p.m.	2 Senior Center Remembering our deceased, 2 p.m. Planning and Zoning City Hall, 6:30 p.m.	3	4 BCYC Sea Scout Regatta City of Imagination Art Exhibit Opening Reception, Theater 6 p.m. Art Walk, 6 - 10 p.m.	5 Sea Scout Regatta Lions Pancake Breakfast 7 a.m. - 11 a.m. City-Wide Yard Sale Art Under the Oaks Clymer Park, 10 a.m.																																																																																																			
6 Daylight Savings BCYC Seascout Regatta		7	8 Gulfport Fresh Market 9 a.m.		9 Board of Adjustment City Hall, 6:30 p.m.	11 Veterans Day Regular trash pickup today CITY HALL CLOSED	12 BCYC One Design Championships Veteran's Day Parade Salute Our Troups 4 p.m. Weekend																																																																																																		
13 BCYC One Design Championships Elvis Concert for Veteran's Casino		14 BCYC One Design Championships Crime Watch Mtg. Neighborhood Ctr., 7 p.m.	15 Gulfport Fresh Market 9 a.m. Council Meeting City Hall, 7 p.m.		16 City of Gulfport Volunteer Luncheon Casino Historic Preservation Museum, 5:30 p.m.	17 C.E.R.T. Mtg. City Hall, 6:30 p.m.	18	19 Hist. Museum Bd. Mtg. 10a.m. COI - Portray Your Pet Gulfport Arts Center, 3 p.m. Art Walk 6 - 10 p.m.																																																																																																	
20									21	22 Gulfport Fresh Market 9 a.m. City of Gulfport Senior Center Thanksgiving Dinner	23 Thursday's Trash Pick-up day	24 Thanksgiving No Trash Pick-up CITY HALL CLOSED	25 Regular Trash Pick up today CITY HALL CLOSED No Yard Pickup this week	26 Growing Greener Event Scout Hall																																																																																											
27	28	29 Gulfport Fresh Market 9 a.m.	30	Coming up Monday, December 5 , a breeze of Holiday music and cheer is felt in the air at the City of Gulfport Holiday Tree Lighting . The Gulfport Recreation children bring home the holiday music on the main stage and Santa will be visiting the kids! Call 727-893-1118 for general info.																																																																																																					
		October 2011 <table><tr><td>S</td><td>M</td><td>T</td><td>W</td><td>Th</td><td>F</td><td>Sa</td></tr><tr><td></td><td></td><td></td><td></td><td></td><td></td><td>1</td></tr><tr><td>2</td><td>3</td><td>4</td><td>5</td><td>6</td><td>7</td><td>8</td></tr><tr><td>9</td><td>10</td><td>11</td><td>12</td><td>13</td><td>14</td><td>15</td></tr><tr><td>16</td><td>17</td><td>18</td><td>19</td><td>20</td><td>21</td><td>22</td></tr><tr><td>23</td><td>24</td><td>25</td><td>26</td><td>27</td><td>28</td><td>29</td></tr><tr><td>30</td><td>31</td><td></td><td></td><td></td><td></td><td></td></tr></table>			S	M	T	W	Th	F	Sa							1	2	3	4	5	6	7	8	9	10	11	12	13	14	15	16	17	18	19	20	21	22	23	24	25	26	27	28	29	30	31						December 2011 <table><tr><td>S</td><td>M</td><td>T</td><td>W</td><td>Th</td><td>F</td><td>Sa</td></tr><tr><td></td><td></td><td></td><td></td><td>1</td><td>2</td><td>3</td></tr><tr><td>4</td><td>5</td><td>6</td><td>7</td><td>8</td><td>9</td><td>10</td></tr><tr><td>11</td><td>12</td><td>13</td><td>14</td><td>15</td><td>16</td><td>17</td></tr><tr><td>18</td><td>19</td><td>20</td><td>21</td><td>22</td><td>23</td><td>24</td></tr><tr><td>25</td><td>26</td><td>27</td><td>28</td><td>29</td><td>30</td><td>31</td></tr><tr><td></td><td></td><td></td><td></td><td></td><td></td><td></td></tr></table>		S	M	T	W	Th	F	Sa					1	2	3	4	5	6	7	8	9	10	11	12	13	14	15	16	17	18	19	20	21	22	23	24	25	26	27	28	29	30	31								Notes:
S	M	T	W	Th	F	Sa																																																																																																			
						1																																																																																																			
2	3	4	5	6	7	8																																																																																																			
9	10	11	12	13	14	15																																																																																																			
16	17	18	19	20	21	22																																																																																																			
23	24	25	26	27	28	29																																																																																																			
30	31																																																																																																								
S	M	T	W	Th	F	Sa																																																																																																			
				1	2	3																																																																																																			
4	5	6	7	8	9	10																																																																																																			
11	12	13	14	15	16	17																																																																																																			
18	19	20	21	22	23	24																																																																																																			
25	26	27	28	29	30	31																																																																																																			

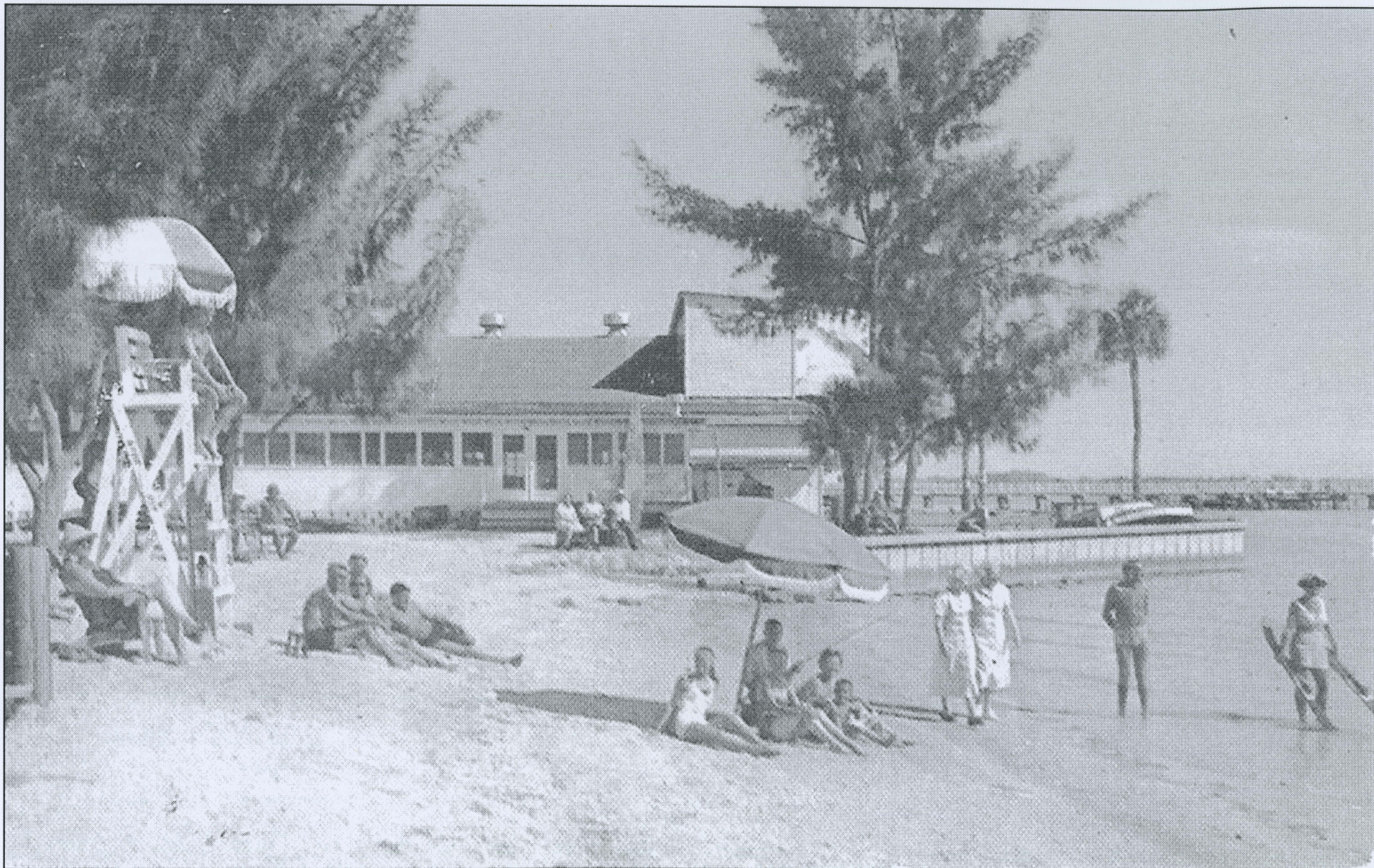


Bay View Hotel.
Gulfport, Fla.

The Lobby of the Bay View Hotel built in 1914, today the Peninsula Inn.

DECEMBER 2011

<p>*Shop local at the Holiday Village Festival on Beach Blvd. on Friday, December 10 from 6 - 10 p.m. Many one of a kind holiday items, Live music, and great restaurants to make your gift giving a fun experience!</p>				1	2 City of Imagination Art Exhibit Opening Reception, Theater 6 p.m. Art Walk, 6 - 10 p.m.	3 Lions Pancake Breakfast 7 a.m. - 11 a.m.																																																																																				
4	5 City of Gulfport Holiday Tree Lighting Clymer Park, 7 p.m.	6 Gulfport Fresh Market 9 a.m. Council Meeting City Hall, 7 p.m.	7 Debbie Bacon Show 1 p.m. & 7 p.m. Theater Planning and Zoning City Hall, 6:30 p.m.	8	9	10 BCYC Annual Christmas Boat Parade *HolidayHoopla Beach Blvd. 10 a.m. - 6 p.m.																																																																																				
11	12 City of Gulfport Reassurance Dinner Senior Center Moon Fire - Scout Hall Crime Watch Mtg. Neighborhood Ctr., 7 p.m.	13 Gulfport Fresh Market 9 a.m.	14 Board of Adjustment City Hall, 6:30 p.m.	15 C.E.R.T. Mtg. City Hall, 6:30 p.m. Lions Toys for Tots Gulfport Chamber presents The Pasadena Band Concert Series 7:30 p.m.	16 Lions Toys for Tots Lions Carols by candlelight	17 Historical Museum Board Meeting 10 a.m. Lions Toys for Tots CIO-Ornament Exchange 3 p.m. Merchant Santa Speedo Run Art Walk, 6 - 10 p.m.																																																																																				
18	19	20 Gulfport Fresh Market 9 a.m. Council Meeting City Hall, 7 p.m.	21 Senior Follies Theater, 1 p.m. Historic Preservation Museum, 5:30 p.m.	22 Council Workshop	23	24 Christmas Eve																																																																																				
25 Christmas Day	26 Kwanzaa Begins Regular trash pickup today CITY HALL CLOSED	27 Gulfport Fresh Market 9 a.m.	28	29	30	31 New Year's Eve City of Gulfport & City of Imagination New Years Eve Dance, Casino																																																																																				
		<p>November 2011</p> <table> <tr><th>S</th><th>M</th><th>T</th><th>W</th><th>Th</th><th>F</th><th>Sa</th></tr> <tr><td></td><td></td><td>1</td><td>2</td><td>3</td><td>4</td><td>5</td></tr> <tr><td>6</td><td>7</td><td>8</td><td>9</td><td>10</td><td>11</td><td>12</td></tr> <tr><td>13</td><td>14</td><td>15</td><td>16</td><td>17</td><td>18</td><td>19</td></tr> <tr><td>20</td><td>21</td><td>22</td><td>23</td><td>24</td><td>25</td><td>26</td></tr> <tr><td>27</td><td>28</td><td>29</td><td>30</td><td></td><td></td><td></td></tr> </table>		S	M	T	W	Th	F	Sa			1	2	3	4	5	6	7	8	9	10	11	12	13	14	15	16	17	18	19	20	21	22	23	24	25	26	27	28	29	30				<p>January 2012</p> <table> <tr><th>S</th><th>M</th><th>T</th><th>W</th><th>Th</th><th>F</th><th>Sa</th></tr> <tr><td>1</td><td>2</td><td>3</td><td>4</td><td>5</td><td>6</td><td>7</td></tr> <tr><td>8</td><td>9</td><td>10</td><td>11</td><td>12</td><td>13</td><td>14</td></tr> <tr><td>15</td><td>16</td><td>17</td><td>18</td><td>19</td><td>20</td><td>21</td></tr> <tr><td>22</td><td>23</td><td>24</td><td>25</td><td>26</td><td>27</td><td>28</td></tr> <tr><td>29</td><td>30</td><td>31</td><td></td><td></td><td></td><td></td></tr> </table>		S	M	T	W	Th	F	Sa	1	2	3	4	5	6	7	8	9	10	11	12	13	14	15	16	17	18	19	20	21	22	23	24	25	26	27	28	29	30	31					Notes:
S	M	T	W	Th	F	Sa																																																																																				
		1	2	3	4	5																																																																																				
6	7	8	9	10	11	12																																																																																				
13	14	15	16	17	18	19																																																																																				
20	21	22	23	24	25	26																																																																																				
27	28	29	30																																																																																							
S	M	T	W	Th	F	Sa																																																																																				
1	2	3	4	5	6	7																																																																																				
8	9	10	11	12	13	14																																																																																				
15	16	17	18	19	20	21																																																																																				
22	23	24	25	26	27	28																																																																																				
29	30	31																																																																																								



Gulfport Beach, 1962

JANUARY 2012

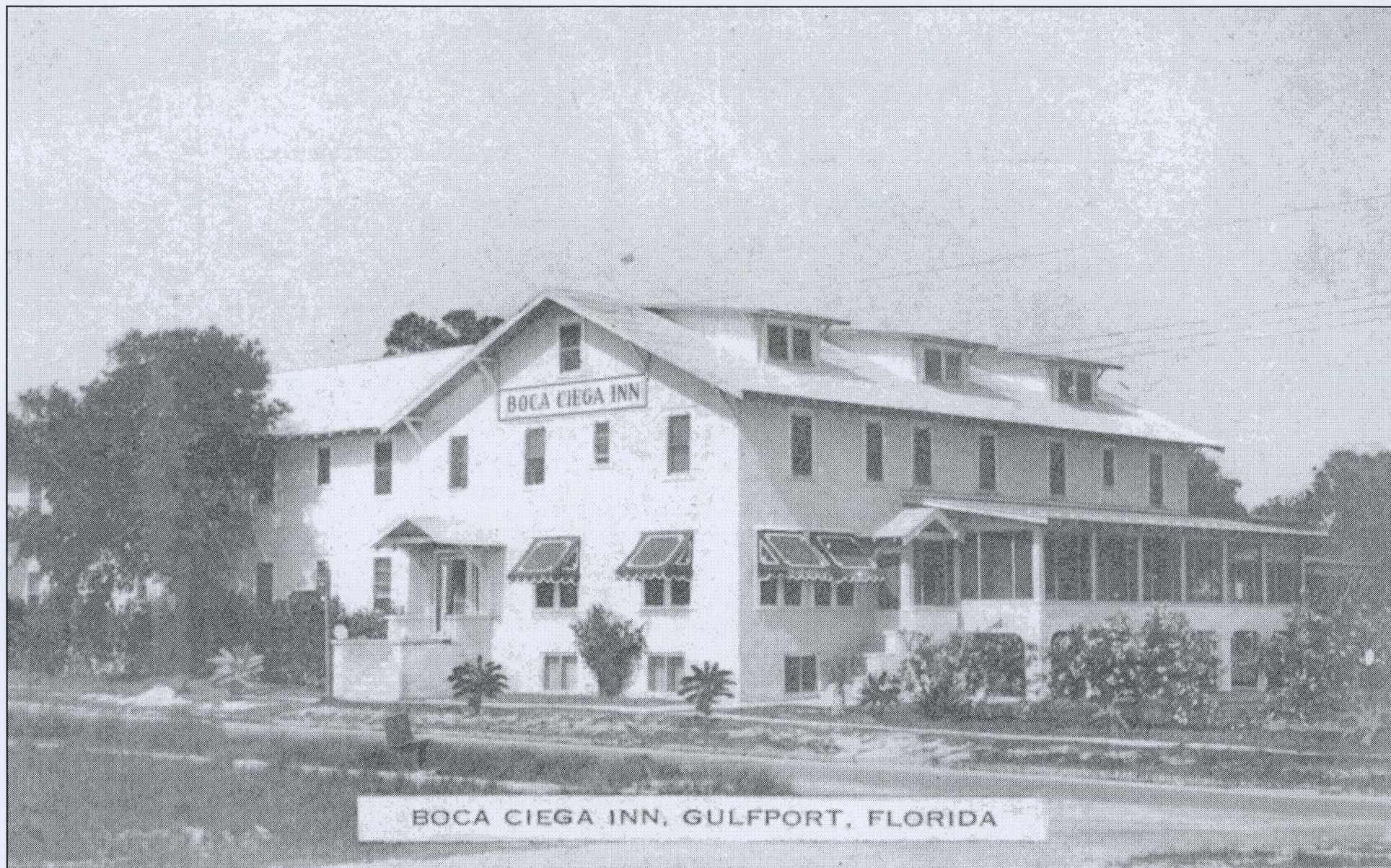
Sunday	Monday	Tuesday	Wednesday	Thursday	Friday	Saturday																																																																																					
1 New Year's Day	2 Regular trash pickup today CITY HALL CLOSED	3 Gulfport Fresh Market 9 a.m. Council Meeting City Hall, 7 p.m.	4 Planning and Zoning City Hall, 6:30 p.m.	5	6 City of Imagination Art Exhibit Opening Reception, Theater 6 p.m. Art Walk, 6 - 10 p.m.	7 Lions Pancake Breakfast 7 a.m. - 11 a.m. City of Gulfport 5k Prostate Cancer Run																																																																																					
8	9	10 Gulfport Fresh Market 9 a.m.	11 Board of Adjustment City Hall, 6:30 p.m.	12	13	14																																																																																					
15	16 ML King Day Regular trash pickup today CITY HALL CLOSED	17 Gulfport Fresh Market 9 a.m. Council Meeting City Hall, 7 p.m.	18 Historic Preservation Museum, 5:30 p.m.	19	20 City of Gulfport Celebrate's Arbor Day Tomlinson Park 19 Ave. S. & 54 St. S.	21 Historic Museum Board Mtg. 10 a.m. COI-Open Creative Convers. Gulfport Arts Center, 3 p.m. Art Walk, 6 - 10 p.m.																																																																																					
22	23 City of Gulfport Senior Center Health and Beauty Fair	24 Gulfport Fresh Market 9 a.m. City of Gulfport Senior Center Health and Beauty Fair	25 City of Gulfport Senior Center Entertainment Fair	26 Council Workshop	27	28																																																																																					
29	30	31 Gulfport Fresh Market 9 a.m.																																																																																									
		December 2011 <table><tr><td>S</td><td>M</td><td>T</td><td>W</td><td>Th</td><td>F</td><td>Sa</td></tr><tr><td></td><td></td><td></td><td></td><td>1</td><td>2</td><td>3</td></tr><tr><td>4</td><td>5</td><td>6</td><td>7</td><td>8</td><td>9</td><td>10</td></tr><tr><td>11</td><td>12</td><td>13</td><td>14</td><td>15</td><td>16</td><td>17</td></tr><tr><td>18</td><td>19</td><td>20</td><td>21</td><td>22</td><td>23</td><td>24</td></tr><tr><td>25</td><td>26</td><td>27</td><td>28</td><td>29</td><td>30</td><td>31</td></tr></table>		S	M	T	W	Th	F	Sa					1	2	3	4	5	6	7	8	9	10	11	12	13	14	15	16	17	18	19	20	21	22	23	24	25	26	27	28	29	30	31	February 2012 <table><tr><td>S</td><td>M</td><td>T</td><td>W</td><td>Th</td><td>F</td><td>Sa</td></tr><tr><td></td><td></td><td></td><td>1</td><td>2</td><td>3</td><td>4</td></tr><tr><td>5</td><td>6</td><td>7</td><td>8</td><td>9</td><td>10</td><td>11</td></tr><tr><td>12</td><td>13</td><td>14</td><td>15</td><td>16</td><td>17</td><td>18</td></tr><tr><td>19</td><td>20</td><td>21</td><td>22</td><td>23</td><td>24</td><td>25</td></tr><tr><td>26</td><td>27</td><td>28</td><td>29</td><td></td><td></td><td></td></tr></table>		S	M	T	W	Th	F	Sa				1	2	3	4	5	6	7	8	9	10	11	12	13	14	15	16	17	18	19	20	21	22	23	24	25	26	27	28	29				Notes:	
S	M	T	W	Th	F	Sa																																																																																					
				1	2	3																																																																																					
4	5	6	7	8	9	10																																																																																					
11	12	13	14	15	16	17																																																																																					
18	19	20	21	22	23	24																																																																																					
25	26	27	28	29	30	31																																																																																					
S	M	T	W	Th	F	Sa																																																																																					
			1	2	3	4																																																																																					
5	6	7	8	9	10	11																																																																																					
12	13	14	15	16	17	18																																																																																					
19	20	21	22	23	24	25																																																																																					
26	27	28	29																																																																																								



**Gathering Rice Shells to Sell to Tourists on Gulfport Beach.
A Harry Thorne postcard, about 1927.**

FEBRUARY 2012

Sunday	Monday	Tuesday	Wednesday	Thursday	Friday	Saturday																																																																																					
			1 Planning and Zoning City Hall, 6:30 p.m.	2 Groundhog Day	3 City of Imagination Art Exhibit Opening Reception, Theater 6 p.m. Art Walk, 6 - 10 p.m.	4 Lions Pancake Breakfast 7 a.m. - 11 a.m. SO49 Car Show Tangerine Greenway 10 a.m. - 5 p.m.																																																																																					
5	6	7 Gulfport Fresh Market 9 a.m. Council Meeting City Hall, 7 p.m.	8 Board of Adjustment City Hall, 6:30 p.m.	9	10 1st Annual Gulfport Chamber Women's Fishing Tournament Captains Dinner	11 1st Annual Gulfport Chamber Women's Fishing Tournament PAVA Cool Art Show Casino 10 a.m. - 5 p.m.																																																																																					
12 Lincoln's B-Day PAVA Cool Art Show Casino 10 a.m. - 5 p.m.	13	14 Valentines Day Gulfport Fresh Market 9 a.m. City of Gulfport Casino Valentine's Dance Doors open 7:30 p.m.	15 Historic Preservation Museum, 5:30 p.m.	16 Gulfport Chamber presents The Pasadena Band Concert Series, 7:30 p.m. Casino	17	18 Historic Museum Board Mtg. 10 a.m. Family Fun Day-Tomlinson COI Mad Hatter Tea Party Gulfport Arts Center, 3 p.m. Art Walk, 6 - 10 p.m.																																																																																					
19	20 President's Day City of Gulfport Senior Center Mardi Gras Party	21 Gulfport Fresh Market 9 a.m. Council Meeting City Hall, 7 p.m.	22	23 Council Workshop	24	25 Gulfport Merchant's Get Rescued 10 a.m. - 5 p.m. Get Rescued Party Casino 7 p.m.																																																																																					
26	27	28 Gulfport Fresh Market 9 a.m.	29																																																																																								
		<div>January 2012</div> <table><tr><td>S</td><td>M</td><td>T</td><td>W</td><td>Th</td><td>F</td><td>Sa</td></tr><tr><td>1</td><td>2</td><td>3</td><td>4</td><td>5</td><td>6</td><td>7</td></tr><tr><td>8</td><td>9</td><td>10</td><td>11</td><td>12</td><td>13</td><td>14</td></tr><tr><td>15</td><td>16</td><td>17</td><td>18</td><td>19</td><td>20</td><td>21</td></tr><tr><td>22</td><td>23</td><td>24</td><td>25</td><td>26</td><td>27</td><td>28</td></tr><tr><td>29</td><td>30</td><td>31</td><td></td><td></td><td></td><td></td></tr></table>		S	M	T	W	Th	F	Sa	1	2	3	4	5	6	7	8	9	10	11	12	13	14	15	16	17	18	19	20	21	22	23	24	25	26	27	28	29	30	31					<div>March 2012</div> <table><tr><td>S</td><td>M</td><td>T</td><td>W</td><td>Th</td><td>F</td><td>Sa</td></tr><tr><td></td><td></td><td></td><td></td><td>1</td><td>2</td><td>3</td></tr><tr><td>4</td><td>5</td><td>6</td><td>7</td><td>8</td><td>9</td><td>10</td></tr><tr><td>11</td><td>12</td><td>13</td><td>14</td><td>15</td><td>16</td><td>17</td></tr><tr><td>18</td><td>19</td><td>20</td><td>21</td><td>22</td><td>23</td><td>24</td></tr><tr><td>25</td><td>26</td><td>27</td><td>28</td><td>29</td><td>30</td><td>31</td></tr></table>		S	M	T	W	Th	F	Sa					1	2	3	4	5	6	7	8	9	10	11	12	13	14	15	16	17	18	19	20	21	22	23	24	25	26	27	28	29	30	31	Notes:	
S	M	T	W	Th	F	Sa																																																																																					
1	2	3	4	5	6	7																																																																																					
8	9	10	11	12	13	14																																																																																					
15	16	17	18	19	20	21																																																																																					
22	23	24	25	26	27	28																																																																																					
29	30	31																																																																																									
S	M	T	W	Th	F	Sa																																																																																					
				1	2	3																																																																																					
4	5	6	7	8	9	10																																																																																					
11	12	13	14	15	16	17																																																																																					
18	19	20	21	22	23	24																																																																																					
25	26	27	28	29	30	31																																																																																					



Built by John Dobler in 1922 and bought by Paul Camp in 1931, the Boca Ciega Inn is now Veteran's Park.

MARCH 2012

Sunday	Monday	Tuesday	Wednesday	Thursday	Friday	Saturday																																																																																				
				1	2 City of Imagination Art Exhibit Opening Reception, Theater 6 p.m. Art Walk, 6 - 10 p.m.	3 Little League Parade and Opening Day																																																																																				
4	5	6 Gulfport Fresh Market 9 a.m. Council Meeting City Hall, 7 p.m.	7 BCYC Adult Basic Sail School Planning and Zoning City Hall, 6:30 p.m.	8	9	10 Pink Flaming Tour of Homes 10 a.m. Lion's Shrimp Boil																																																																																				
11 Daylight Savings	12	13 Gulfport Fresh Market 9 a.m.	14 Board of Adjustment City Hall, 6:30 p.m.	15 C.E.R.T. Mtg. 6:30 p.m., City Hall Gulfport Chamber presents The Pasadena Band Concert Series, 7:30 p.m. Casino	16	17 St. Patrick's Day Clam Bayou Cleanup 9 a.m. - Noon City-Wide Yard Sale Antiques in the Park, Clymer Art Walk, 6 - 10 p.m.																																																																																				
18	19	20 Vernal equinox Gulfport Fresh Market 9 a.m. Council Meeting City Hall, 7 p.m.	21 Historic Preservation Museum, 5:30 p.m.	22 Council Workshop	23 City of Gulfport Senior Follies Theater, 7 p.m.	24 City of Gulfport Nautical Flea Market Gulfport Municipal Marina 7 a.m. - 2 p.m.																																																																																				
25	26	27 Gulfport Fresh Market 9 a.m.	28	29	30	31 Gulfport Chamber Springfest 11 a.m. - 8 p.m. BCYC Blessing of the Fleet Gulfport Beach																																																																																				
		February 2012 <table> <tr><td>S</td><td>M</td><td>T</td><td>W</td><td>Th</td><td>F</td><td>Sa</td></tr> <tr><td></td><td></td><td></td><td>1</td><td>2</td><td>3</td><td>4</td></tr> <tr><td>5</td><td>6</td><td>7</td><td>8</td><td>9</td><td>10</td><td>11</td></tr> <tr><td>12</td><td>13</td><td>14</td><td>15</td><td>16</td><td>17</td><td>18</td></tr> <tr><td>19</td><td>20</td><td>21</td><td>22</td><td>23</td><td>24</td><td>25</td></tr> <tr><td>26</td><td>27</td><td>28</td><td>29</td><td></td><td></td><td></td></tr> </table>		S	M	T	W	Th	F	Sa				1	2	3	4	5	6	7	8	9	10	11	12	13	14	15	16	17	18	19	20	21	22	23	24	25	26	27	28	29				April 2012 <table> <tr><td>S</td><td>M</td><td>T</td><td>W</td><td>Th</td><td>F</td><td>Sa</td></tr> <tr><td>1</td><td>2</td><td>3</td><td>4</td><td>5</td><td>6</td><td>7</td></tr> <tr><td>8</td><td>9</td><td>10</td><td>11</td><td>12</td><td>13</td><td>14</td></tr> <tr><td>15</td><td>16</td><td>17</td><td>18</td><td>19</td><td>20</td><td>21</td></tr> <tr><td>22</td><td>23</td><td>24</td><td>25</td><td>26</td><td>27</td><td>28</td></tr> <tr><td>29</td><td>30</td><td></td><td></td><td></td><td></td><td></td></tr> </table>		S	M	T	W	Th	F	Sa	1	2	3	4	5	6	7	8	9	10	11	12	13	14	15	16	17	18	19	20	21	22	23	24	25	26	27	28	29	30						Notes:
S	M	T	W	Th	F	Sa																																																																																				
			1	2	3	4																																																																																				
5	6	7	8	9	10	11																																																																																				
12	13	14	15	16	17	18																																																																																				
19	20	21	22	23	24	25																																																																																				
26	27	28	29																																																																																							
S	M	T	W	Th	F	Sa																																																																																				
1	2	3	4	5	6	7																																																																																				
8	9	10	11	12	13	14																																																																																				
15	16	17	18	19	20	21																																																																																				
22	23	24	25	26	27	28																																																																																				
29	30																																																																																									



**Passengers Arriving on One of the Party Boats to Pass-A-Grille
around 1930**

APRIL 2012

Sunday	Monday	Tuesday	Wednesday	Thursday	Friday	Saturday																																																																																																			
1 April Fool's Day	2	3 Gulfport Fresh Market 9 a.m. Council Meeting City Hall, 7 p.m.	4 Planning and Zoning City Hall, 6:30 p.m.	5	6 Good Friday City of Imagination Art Exhibit Opening Reception, Theater 6 p.m. Art Walk, 6 - 10 p.m.	7 Passover Lions Pancake Breakfast 7 a.m. - 11 a.m. Fun in the Sun 10 a.m. - Noon																																																																																																			
8 Easter Sunrise Service Gulfport Beach	9	10 Gulfport Fresh Market 9 a.m.	11 City of Gulfport Senior Center Dance Board of Adjustment City Hall, 6:30 p.m.	12	13 Relay for Life	14 Relay for Life																																																																																																			
15	16 Taxes Due	17 Gulfport Fresh Market 9 a.m. Council Meeting City Hall, 7 p.m.	18 Historic Preservation Museum, 5:30 p.m.	19	20	21 Historic Museum Board Mtg. 10 a.m. Art Walk, 6 - 10 p.m.																																																																																																			
22 Earth Day	23	24 Gulfport Fresh Market 9 a.m.	25 Admin Assist Day	26 Council Workshop	27	28 Free Oral Cancer & Prostate screening Walgreens 10 a.m. - 2 p.m. BCYC Fun Day! GYC Spring Mult-Hull Regatta, Gulfport Beach																																																																																																			
29 GYC Spring Mult-Hull Regatta, Gulfport Beach	30																																																																																																								
		March 2012 <table><tr><td>S</td><td>M</td><td>T</td><td>W</td><td>Th</td><td>F</td><td>Sa</td></tr><tr><td></td><td></td><td></td><td></td><td>1</td><td>2</td><td>3</td></tr><tr><td>4</td><td>5</td><td>6</td><td>7</td><td>8</td><td>9</td><td>10</td></tr><tr><td>11</td><td>12</td><td>13</td><td>14</td><td>15</td><td>16</td><td>17</td></tr><tr><td>18</td><td>19</td><td>20</td><td>21</td><td>22</td><td>23</td><td>24</td></tr><tr><td>25</td><td>26</td><td>27</td><td>28</td><td>29</td><td>30</td><td>31</td></tr><tr><td></td><td></td><td></td><td></td><td></td><td></td><td></td></tr></table>		S	M	T	W	Th	F	Sa					1	2	3	4	5	6	7	8	9	10	11	12	13	14	15	16	17	18	19	20	21	22	23	24	25	26	27	28	29	30	31								May 2012 <table><tr><td>S</td><td>M</td><td>T</td><td>W</td><td>Th</td><td>F</td><td>Sa</td></tr><tr><td></td><td></td><td>1</td><td>2</td><td>3</td><td>4</td><td>5</td></tr><tr><td>6</td><td>7</td><td>8</td><td>9</td><td>10</td><td>11</td><td>12</td></tr><tr><td>13</td><td>14</td><td>15</td><td>16</td><td>17</td><td>18</td><td>19</td></tr><tr><td>20</td><td>21</td><td>22</td><td>23</td><td>24</td><td>25</td><td>26</td></tr><tr><td>27</td><td>28</td><td>29</td><td>30</td><td>31</td><td></td><td></td></tr><tr><td></td><td></td><td></td><td></td><td></td><td></td><td></td></tr></table>		S	M	T	W	Th	F	Sa			1	2	3	4	5	6	7	8	9	10	11	12	13	14	15	16	17	18	19	20	21	22	23	24	25	26	27	28	29	30	31										Notes:	
S	M	T	W	Th	F	Sa																																																																																																			
				1	2	3																																																																																																			
4	5	6	7	8	9	10																																																																																																			
11	12	13	14	15	16	17																																																																																																			
18	19	20	21	22	23	24																																																																																																			
25	26	27	28	29	30	31																																																																																																			
S	M	T	W	Th	F	Sa																																																																																																			
		1	2	3	4	5																																																																																																			
6	7	8	9	10	11	12																																																																																																			
13	14	15	16	17	18	19																																																																																																			
20	21	22	23	24	25	26																																																																																																			
27	28	29	30	31																																																																																																					

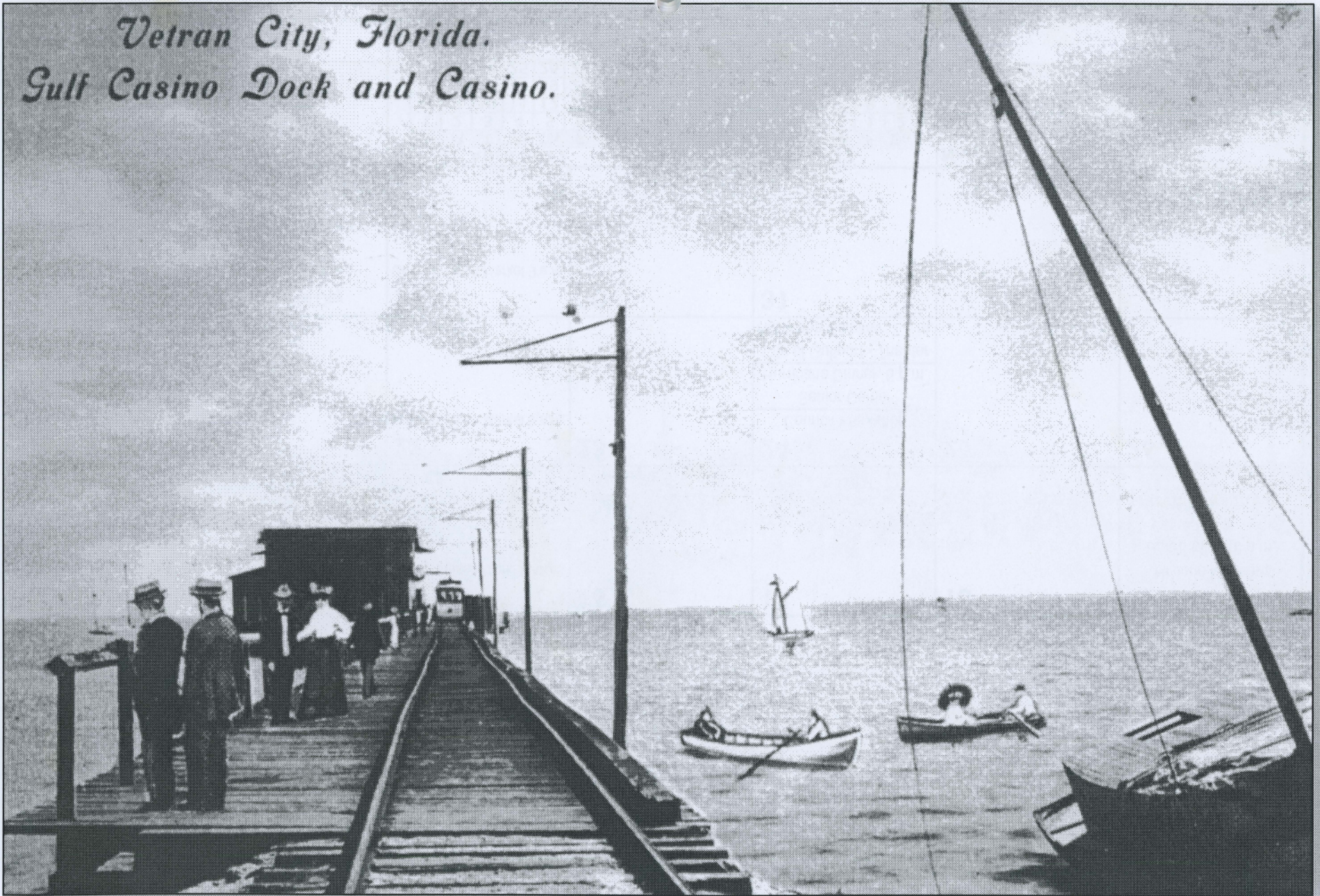


The "Miss Gulfport" Speedboat competing in a race by the Pier.
A 1930s Harry Thorne postcard.

MAY 2012

Sunday	Monday	Tuesday	Wednesday	Thursday	Friday	Saturday																																																																																				
		1 Gulfport Fresh Market 9 a.m. Council Meeting City Hall, 7 p.m.	2 Planning and Zoning City Hall, 6:30 p.m.	3	4 Senior Center Cinco De Mayo Party City of Imagination Art Exhibit Opening Reception, Theater 6 p.m. Art Walk, 6 - 10 p.m.	5 Lions Pancake Breakfast 7 a.m. - 11 a.m.																																																																																				
6	7	8 Gulfport Fresh Market 9 a.m.	9 Board of Adjustment City Hall, 6:30 p.m.	10	11	12																																																																																				
13 Mother's Day	14	15 Gulfport Fresh Market 9 a.m. Council Meeting City Hall, 7 p.m.	16 Historic Preservation Museum, 5:30 p.m.	17	18	19 Historic Museum Board Mtg. 10 a.m. Art Walk, 6 - 10 p.m.																																																																																				
20	21	22 Gulfport Fresh Market 9 a.m.	23	24 Council Workshop Senior Center Hurricane Dinner, 6 p.m. City of Gulfport - Theater Hurricane Seminar, 7 p.m.	25	26																																																																																				
27	28 Memorial Day Regular trash pickup today CITY HALL CLOSED	29 Gulfport Fresh Market 9 a.m.	30	31																																																																																						
		April 2012 <table><tr><td>S</td><td>M</td><td>T</td><td>W</td><td>Th</td><td>F</td><td>Sa</td></tr><tr><td>1</td><td>2</td><td>3</td><td>4</td><td>5</td><td>6</td><td>7</td></tr><tr><td>8</td><td>9</td><td>10</td><td>11</td><td>12</td><td>13</td><td>14</td></tr><tr><td>15</td><td>16</td><td>17</td><td>18</td><td>19</td><td>20</td><td>21</td></tr><tr><td>22</td><td>23</td><td>24</td><td>25</td><td>26</td><td>27</td><td>28</td></tr><tr><td>29</td><td>30</td><td></td><td></td><td></td><td></td><td></td></tr></table>		S	M	T	W	Th	F	Sa	1	2	3	4	5	6	7	8	9	10	11	12	13	14	15	16	17	18	19	20	21	22	23	24	25	26	27	28	29	30						June 2012 <table><tr><td>S</td><td>M</td><td>T</td><td>W</td><td>Th</td><td>F</td><td>Sa</td></tr><tr><td></td><td></td><td></td><td></td><td></td><td>1</td><td>2</td></tr><tr><td>3</td><td>4</td><td>5</td><td>6</td><td>7</td><td>8</td><td>9</td></tr><tr><td>10</td><td>11</td><td>12</td><td>13</td><td>14</td><td>15</td><td>16</td></tr><tr><td>17</td><td>18</td><td>19</td><td>20</td><td>21</td><td>22</td><td>23</td></tr><tr><td>24</td><td>25</td><td>26</td><td>27</td><td>28</td><td>29</td><td>30</td></tr></table>		S	M	T	W	Th	F	Sa						1	2	3	4	5	6	7	8	9	10	11	12	13	14	15	16	17	18	19	20	21	22	23	24	25	26	27	28	29	30	Notes:
S	M	T	W	Th	F	Sa																																																																																				
1	2	3	4	5	6	7																																																																																				
8	9	10	11	12	13	14																																																																																				
15	16	17	18	19	20	21																																																																																				
22	23	24	25	26	27	28																																																																																				
29	30																																																																																									
S	M	T	W	Th	F	Sa																																																																																				
					1	2																																																																																				
3	4	5	6	7	8	9																																																																																				
10	11	12	13	14	15	16																																																																																				
17	18	19	20	21	22	23																																																																																				
24	25	26	27	28	29	30																																																																																				

*Vetran City, Florida.
Gulf Casino Dock and Casino.*



An Early Postcard Showing the Pier at the First Casino around 1906 when Gulfport was still known as Veteran City (Misspelled Vetran).

JUNE 2012

Sunday	Monday	Tuesday	Wednesday	Thursday	Friday	Saturday																																																																																					
					1 City of Imagination Art Exhibit Opening Reception, Theater 6 p.m. Art Walk, 6 - 10 p.m.	2																																																																																					
3	4	5 Gulfport Fresh Market 9 a.m. Council Meeting City Hall, 7 p.m.	6 Planning and Zoning City Hall, 6:30 p.m.	7	8	9																																																																																					
10	11	12 Gulfport Fresh Market 9 a.m.	13 Board of Adjustment City Hall, 6:30 p.m.	14 Flag Day City of Gulfport Celebrates Flag Day Veteran's Park 10 a.m.	15	16 Historic Museum Board Mtg. 10 a.m. Art Walk, 6 - 10 p.m.																																																																																					
17 Father's Day	18	19 Gulfport Fresh Market 9 a.m. Council Meeting City Hall, 7 p.m.	20 June Solstice Historic Preservation Museum, 5:30 p.m.	21 C.E.R.T. Mtg. City Hall, 6:30 p.m.	22	23 Gulfport Chamber Special Event The Point & Gulfport Beach																																																																																					
24	25	26 Gulfport Fresh Market 9 a.m.	27 City of Gulfport Senior Center Ice Cream Carnival	28 Council Workshop	29	30 Growing Green Casino																																																																																					
		<div>May 2012</div> <table><tr><th>S</th><th>M</th><th>T</th><th>W</th><th>Th</th><th>F</th><th>Sa</th></tr><tr><td></td><td></td><td>1</td><td>2</td><td>3</td><td>4</td><td>5</td></tr><tr><td>6</td><td>7</td><td>8</td><td>9</td><td>10</td><td>11</td><td>12</td></tr><tr><td>13</td><td>14</td><td>15</td><td>16</td><td>17</td><td>18</td><td>19</td></tr><tr><td>20</td><td>21</td><td>22</td><td>23</td><td>24</td><td>25</td><td>26</td></tr><tr><td>27</td><td>28</td><td>29</td><td>30</td><td>31</td><td></td><td></td></tr></table>			S	M	T	W	Th	F	Sa			1	2	3	4	5	6	7	8	9	10	11	12	13	14	15	16	17	18	19	20	21	22	23	24	25	26	27	28	29	30	31			<div>July 2012</div> <table><tr><th>S</th><th>M</th><th>T</th><th>W</th><th>Th</th><th>F</th><th>Sa</th></tr><tr><td>1</td><td>2</td><td>3</td><td>4</td><td>5</td><td>6</td><td>7</td></tr><tr><td>8</td><td>9</td><td>10</td><td>11</td><td>12</td><td>13</td><td>14</td></tr><tr><td>15</td><td>16</td><td>17</td><td>18</td><td>19</td><td>20</td><td>21</td></tr><tr><td>22</td><td>23</td><td>24</td><td>25</td><td>26</td><td>27</td><td>28</td></tr><tr><td>29</td><td>30</td><td>31</td><td></td><td></td><td></td><td></td></tr></table>		S	M	T	W	Th	F	Sa	1	2	3	4	5	6	7	8	9	10	11	12	13	14	15	16	17	18	19	20	21	22	23	24	25	26	27	28	29	30	31					Notes:
S	M	T	W	Th	F	Sa																																																																																					
		1	2	3	4	5																																																																																					
6	7	8	9	10	11	12																																																																																					
13	14	15	16	17	18	19																																																																																					
20	21	22	23	24	25	26																																																																																					
27	28	29	30	31																																																																																							
S	M	T	W	Th	F	Sa																																																																																					
1	2	3	4	5	6	7																																																																																					
8	9	10	11	12	13	14																																																																																					
15	16	17	18	19	20	21																																																																																					
22	23	24	25	26	27	28																																																																																					
29	30	31																																																																																									



An Aerial View of the Gulfport Waterfront, 1936

JULY 2012

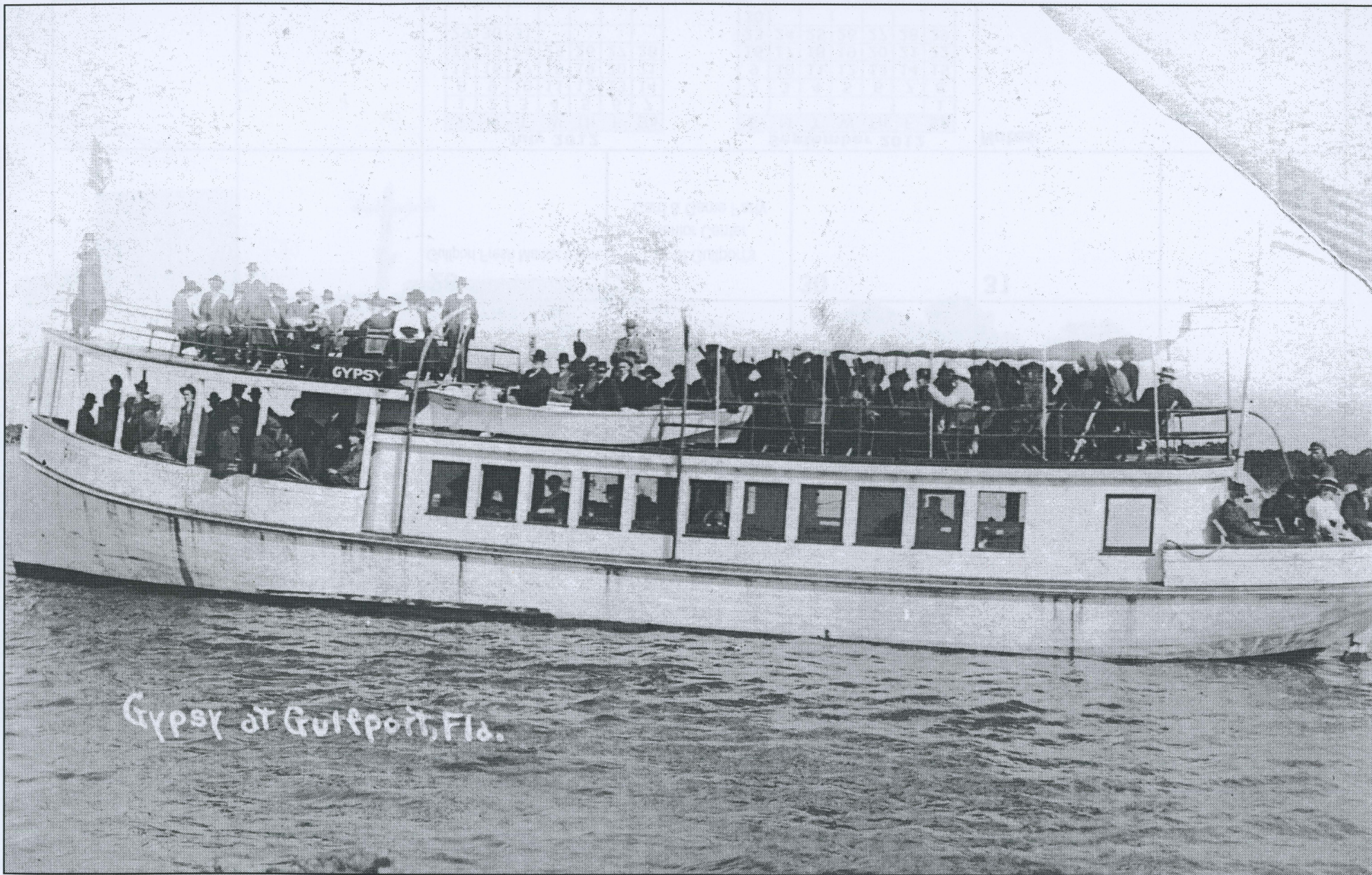
Sunday	Monday	Tuesday	Wednesday	Thursday	Friday	Saturday																																																																																					
1	2	3 Gulfport Fresh Market 9 a.m. Council Meeting City Hall, 7 p.m.	4 Independence Day City of Gulfport Celebrates the 4th of July All day long! No yard waste pickup today	5	6 City of Imagination Art Exhibit Opening Reception, Theater 6 p.m. Art Walk, 6 - 10 p.m.	7																																																																																					
8	9	10 Gulfport Fresh Market 9 a.m.	11 Board of Adjustment City Hall, 6:30 p.m.	12 GCP - Summer One Acts, 8 p.m., Theater	13 GCP - Summer One Acts, 8 p.m., Theater	14 GCP - Summer One Acts, 8 p.m., Theater																																																																																					
15 GCP - Summer One Acts, 8 p.m., Theater	16	17 Gulfport Fresh Market 9 a.m. Council Meeting City Hall, 7 p.m.	18 Historic Preservation Museum, 5:30 p.m.	19 C.E.R.T. Mtg. City Hall, 6:30 p.m. GCP - Summer One Acts One Acts, 8 p.m., Theater	20 Ramadan begins GCP - Summer One Acts, 8 p.m., Theater	21 Historic Museum Board Mtg. 10 a.m. Art Walk, 6 - 10 p.m. GCP - Summer GCP - Summer One Acts One Acts, 8 p.m., Theater																																																																																					
22 Parents' Day GCP - Summer One Acts One Acts, 2 p.m., Theater	23	24 Gulfport Fresh Market 9 a.m.	25 City of Gulfport Senior Center Hawaiian Luau	26 Council Workshop GCP - Summer One Acts, 8 p.m., Theater	27 GCP - Summer One Acts, 8 p.m., Theater	28 GCP - Summer One Acts, 8 p.m., Theater																																																																																					
29 GCP - Summer One Acts, 2 p.m., Theater	30	31 Gulfport Fresh Market 9 a.m.																																																																																									
		<div>June 2012</div> <table><tr><th>S</th><th>M</th><th>T</th><th>W</th><th>Th</th><th>F</th><th>Sa</th></tr><tr><td></td><td></td><td></td><td></td><td></td><td>1</td><td>2</td></tr><tr><td>3</td><td>4</td><td>5</td><td>6</td><td>7</td><td>8</td><td>9</td></tr><tr><td>10</td><td>11</td><td>12</td><td>13</td><td>14</td><td>15</td><td>16</td></tr><tr><td>17</td><td>18</td><td>19</td><td>20</td><td>21</td><td>22</td><td>23</td></tr><tr><td>24</td><td>25</td><td>26</td><td>27</td><td>28</td><td>29</td><td>30</td></tr></table>		S	M	T	W	Th	F	Sa						1	2	3	4	5	6	7	8	9	10	11	12	13	14	15	16	17	18	19	20	21	22	23	24	25	26	27	28	29	30	<div>August 2012</div> <table><tr><th>S</th><th>M</th><th>T</th><th>W</th><th>Th</th><th>F</th><th>Sa</th></tr><tr><td></td><td></td><td></td><td>1</td><td>2</td><td>3</td><td>4</td></tr><tr><td>5</td><td>6</td><td>7</td><td>8</td><td>9</td><td>10</td><td>11</td></tr><tr><td>12</td><td>13</td><td>14</td><td>15</td><td>16</td><td>17</td><td>18</td></tr><tr><td>19</td><td>20</td><td>21</td><td>22</td><td>23</td><td>24</td><td>25</td></tr><tr><td>26</td><td>27</td><td>28</td><td>29</td><td>30</td><td>31</td><td></td></tr></table>		S	M	T	W	Th	F	Sa				1	2	3	4	5	6	7	8	9	10	11	12	13	14	15	16	17	18	19	20	21	22	23	24	25	26	27	28	29	30	31		<div>Notes:</div>	
S	M	T	W	Th	F	Sa																																																																																					
					1	2																																																																																					
3	4	5	6	7	8	9																																																																																					
10	11	12	13	14	15	16																																																																																					
17	18	19	20	21	22	23																																																																																					
24	25	26	27	28	29	30																																																																																					
S	M	T	W	Th	F	Sa																																																																																					
			1	2	3	4																																																																																					
5	6	7	8	9	10	11																																																																																					
12	13	14	15	16	17	18																																																																																					
19	20	21	22	23	24	25																																																																																					
26	27	28	29	30	31																																																																																						



A view down Beach Boulevard, then called Davis Boulevard, from the grocery store in the 2800 block, taken in the late 1920s.

AUGUST 2012

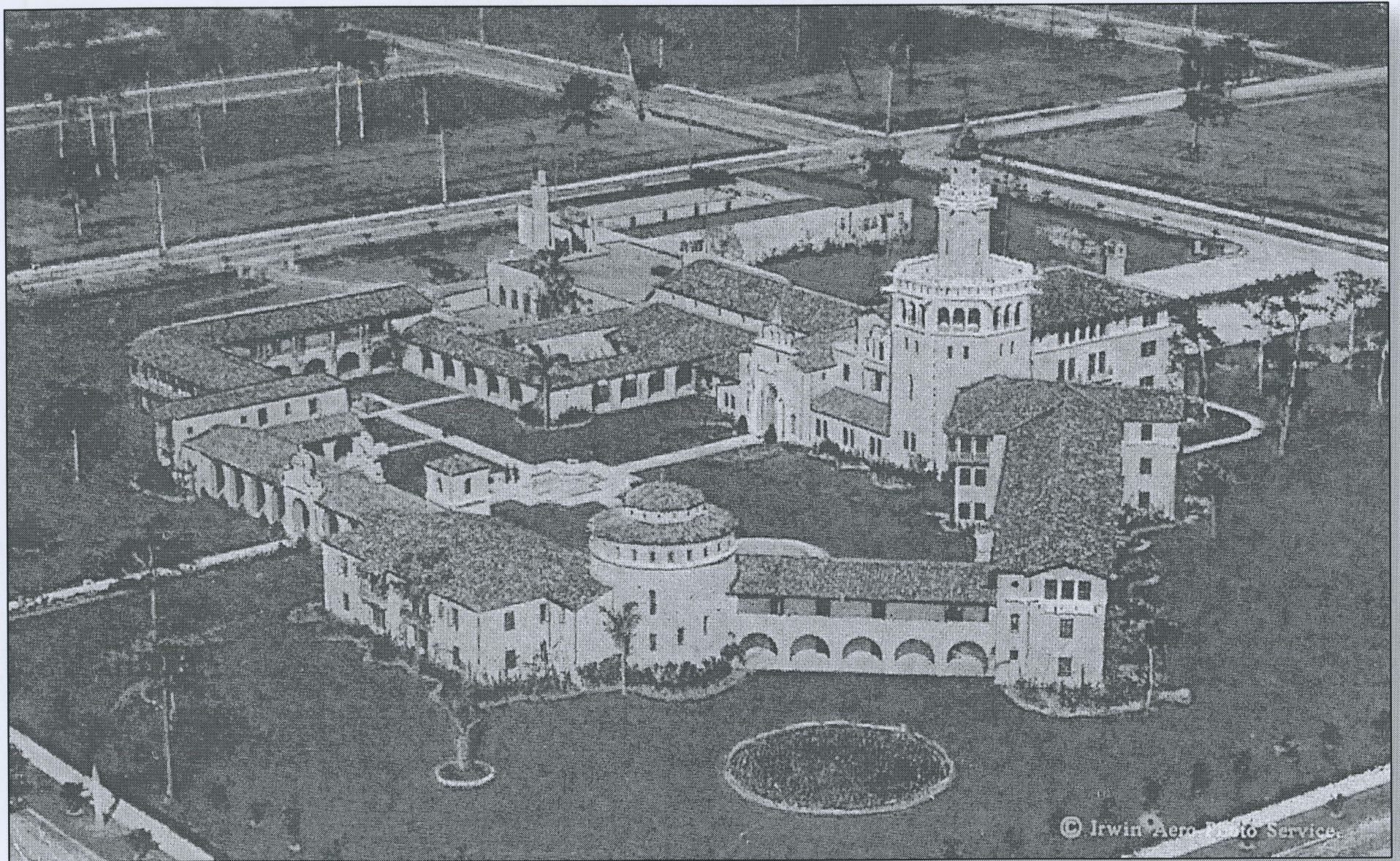
Sunday	Monday	Tuesday	Wednesday	Thursday	Friday	Saturday																																																																																											
			1 Planning and Zoning City Hall, 6:30 p.m.	2 City of Gulfport's National Night Out	3 City of Imagination Art Exhibit Opening Reception, Theater 6 p.m. Art Walk, 6 - 10 p.m.	4																																																																																											
5	6	7 Gulfport Fresh Market 9 a.m. Council Meeting City Hall, 7 p.m.	8 Board of Adjustment City Hall, 6:30 p.m.	9	10	11																																																																																											
12	13	14 Gulfport Fresh Market 9 a.m.	15 Historic Preservation Museum, 5:30 p.m.	16	17	18 Historic Museum Board Mtg. 10 a.m. Art Walk, 6 - 10 p.m.																																																																																											
19 Aviation Day	20	21 Gulfport Fresh Market 9 a.m. Council Meeting City Hall, 7 p.m.	22	23 Council Workshop	24	25																																																																																											
26	27	28 Gulfport Fresh Market 9 a.m.	29 City of Gulfport's Senior Center Card & Game Party	30	31																																																																																												
		July 2012 <table><tr><td>S</td><td>M</td><td>T</td><td>W</td><td>Th</td><td>F</td><td>Sa</td></tr><tr><td>1</td><td>2</td><td>3</td><td>4</td><td>5</td><td>6</td><td>7</td></tr><tr><td>8</td><td>9</td><td>10</td><td>11</td><td>12</td><td>13</td><td>14</td></tr><tr><td>15</td><td>16</td><td>17</td><td>18</td><td>19</td><td>20</td><td>21</td></tr><tr><td>22</td><td>23</td><td>24</td><td>25</td><td>26</td><td>27</td><td>28</td></tr><tr><td>29</td><td>30</td><td>31</td><td></td><td></td><td></td><td></td></tr></table>		S	M	T	W	Th	F	Sa	1	2	3	4	5	6	7	8	9	10	11	12	13	14	15	16	17	18	19	20	21	22	23	24	25	26	27	28	29	30	31					September 2012 <table><tr><td>S</td><td>M</td><td>T</td><td>W</td><td>Th</td><td>F</td><td>Sa</td></tr><tr><td></td><td></td><td></td><td></td><td></td><td></td><td>1</td></tr><tr><td>2</td><td>3</td><td>4</td><td>5</td><td>6</td><td>7</td><td>8</td></tr><tr><td>9</td><td>10</td><td>11</td><td>12</td><td>13</td><td>14</td><td>15</td></tr><tr><td>16</td><td>17</td><td>18</td><td>19</td><td>20</td><td>21</td><td>22</td></tr><tr><td>23</td><td>24</td><td>25</td><td>26</td><td>27</td><td>28</td><td>29</td></tr><tr><td>30</td><td></td><td></td><td></td><td></td><td></td><td></td></tr></table>		S	M	T	W	Th	F	Sa							1	2	3	4	5	6	7	8	9	10	11	12	13	14	15	16	17	18	19	20	21	22	23	24	25	26	27	28	29	30							Notes:
S	M	T	W	Th	F	Sa																																																																																											
1	2	3	4	5	6	7																																																																																											
8	9	10	11	12	13	14																																																																																											
15	16	17	18	19	20	21																																																																																											
22	23	24	25	26	27	28																																																																																											
29	30	31																																																																																															
S	M	T	W	Th	F	Sa																																																																																											
						1																																																																																											
2	3	4	5	6	7	8																																																																																											
9	10	11	12	13	14	15																																																																																											
16	17	18	19	20	21	22																																																																																											
23	24	25	26	27	28	29																																																																																											
30																																																																																																	



**The "Gypsy," Gulfport's favorite party boat,
on an excursion to the beaches about 1912.**

SEPTEMBER 2012

Sunday	Monday	Tuesday	Wednesday	Thursday	Friday	Saturday																																																																																				
						1 Gulfport Merchant's Geckofest!																																																																																				
2	3 Labor Day Regular trash pickup today CITY HALL CLOSED Lion's Fish Fry	4 Gulfport Fresh Market 9 a.m. Council Meeting City Hall, 7 p.m.	5 Planning and Zoning City Hall, 6:30 p.m.	6	7 City of Imagination Art Exhibit Opening Reception, Theater 6 p.m. Art Walk, 6 - 10 p.m.	8																																																																																				
9 Grandparents Day	10	11 Patriot Day Gulfport Fresh Market 9 a.m.	12 Board of Adjustment City Hall, 6:30 p.m.	13	14	15 Historic Museum Board Mtg. 10 a.m. Art Walk, 6 - 10 p.m.																																																																																				
16	17 Rosh Hashanah	18 Gulfport Fresh Market 9 a.m. Council Meeting City Hall, 7 p.m.	19 Historic Preservation Museum, 5:30 p.m.	20 C.E.R.T. Mtg. City Hall, 6:30 p.m.	21	22 Autumnal equinox SO49 Tangerine Bluesfest																																																																																				
23	24	25 Gulfport Fresh Market 9 a.m.	26 Yom Kippur	27 Council Workshop 3:30 p.m.	28 City of Gulfport Senior Center Night in Italy Dinner Theater Party	29																																																																																				
30		August 2012 <table> <tr><th>S</th><th>M</th><th>T</th><th>W</th><th>Th</th><th>F</th><th>Sa</th></tr> <tr><td></td><td></td><td></td><td>1</td><td>2</td><td>3</td><td>4</td></tr> <tr><td>5</td><td>6</td><td>7</td><td>8</td><td>9</td><td>10</td><td>11</td></tr> <tr><td>12</td><td>13</td><td>14</td><td>15</td><td>16</td><td>17</td><td>18</td></tr> <tr><td>19</td><td>20</td><td>21</td><td>22</td><td>23</td><td>24</td><td>25</td></tr> <tr><td>26</td><td>27</td><td>28</td><td>29</td><td>30</td><td>31</td><td></td></tr> </table>		S	M	T	W	Th	F	Sa				1	2	3	4	5	6	7	8	9	10	11	12	13	14	15	16	17	18	19	20	21	22	23	24	25	26	27	28	29	30	31		October 2012 <table> <tr><th>S</th><th>M</th><th>T</th><th>W</th><th>Th</th><th>F</th><th>Sa</th></tr> <tr><td></td><td>1</td><td>2</td><td>3</td><td>4</td><td>5</td><td>6</td></tr> <tr><td>7</td><td>8</td><td>9</td><td>10</td><td>11</td><td>12</td><td>13</td></tr> <tr><td>14</td><td>15</td><td>16</td><td>17</td><td>18</td><td>19</td><td>20</td></tr> <tr><td>21</td><td>22</td><td>23</td><td>24</td><td>25</td><td>26</td><td>27</td></tr> <tr><td>28</td><td>29</td><td>30</td><td>31</td><td></td><td></td><td></td></tr> </table>		S	M	T	W	Th	F	Sa		1	2	3	4	5	6	7	8	9	10	11	12	13	14	15	16	17	18	19	20	21	22	23	24	25	26	27	28	29	30	31				Notes:
S	M	T	W	Th	F	Sa																																																																																				
			1	2	3	4																																																																																				
5	6	7	8	9	10	11																																																																																				
12	13	14	15	16	17	18																																																																																				
19	20	21	22	23	24	25																																																																																				
26	27	28	29	30	31																																																																																					
S	M	T	W	Th	F	Sa																																																																																				
	1	2	3	4	5	6																																																																																				
7	8	9	10	11	12	13																																																																																				
14	15	16	17	18	19	20																																																																																				
21	22	23	24	25	26	27																																																																																				
28	29	30	31																																																																																							



**An Aerial View of the Rolyat Hotel, now Stetson University College of Law,
shortly after it was built in the late 1920s**

OCTOBER 2012

Sunday	Monday	Tuesday	Wednesday	Thursday	Friday	Saturday																																																																																																		
	1	2 Gulfport Fresh Market 9 a.m. Council Meeting City Hall, 7 p.m.	3 Planning and Zoning City Hall, 6:30 p.m.	4	5 City of Imagination Art Exhibit Opening Reception, Theater 6 p.m. Art Walk, 6 - 10 p.m.	6 Gulfport Birthday Bash! Historical Museum 4 - 9 p.m. Lion's Spagetti Supper																																																																																																		
7	8 Columbus Day Senior Center Birthday Celebration!	9 Gulfport Fresh Market 9 a.m.	10 Board of Adjustment City Hall, 6:30 p.m.	11	12	13 Clam Bayou Cleanup 9 a.m.																																																																																																		
14	15	16 Gulfport Fresh Market 9 a.m. Council Meeting City Hall, 7 p.m.	17 Historic Preservation Museum, 5:30 p.m.	18	19	20 Historic Museum Board Mtg. 10 a.m. Art Walk, 6 - 10 p.m.																																																																																																		
21	22	23 Gulfport Fresh Market 9 a.m.	24 United Nations Day	25 Council Workshop	26	27																																																																																																		
28	29	30 Gulfport Fresh Market 9 a.m.	31 Halloween Gulfport Recreation Div. Spooktacular Halloween! 7 p.m.																																																																																																					
		September 2012 <table border="1"> <tr><td>S</td><td>M</td><td>T</td><td>W</td><td>Th</td><td>F</td><td>Sa</td></tr> <tr><td></td><td></td><td></td><td></td><td></td><td></td><td>1</td></tr> <tr><td>2</td><td>3</td><td>4</td><td>5</td><td>6</td><td>7</td><td>8</td></tr> <tr><td>9</td><td>10</td><td>11</td><td>12</td><td>13</td><td>14</td><td>15</td></tr> <tr><td>16</td><td>17</td><td>18</td><td>19</td><td>20</td><td>21</td><td>22</td></tr> <tr><td>23</td><td>24</td><td>25</td><td>26</td><td>27</td><td>28</td><td>29</td></tr> <tr><td>30</td><td></td><td></td><td></td><td></td><td></td><td></td></tr> </table>		S	M	T	W	Th	F	Sa							1	2	3	4	5	6	7	8	9	10	11	12	13	14	15	16	17	18	19	20	21	22	23	24	25	26	27	28	29	30							November 2012 <table border="1"> <tr><td>S</td><td>M</td><td>T</td><td>W</td><td>Th</td><td>F</td><td>Sa</td></tr> <tr><td></td><td></td><td></td><td></td><td>1</td><td>2</td><td>3</td></tr> <tr><td>4</td><td>5</td><td>6</td><td>7</td><td>8</td><td>9</td><td>10</td></tr> <tr><td>11</td><td>12</td><td>13</td><td>14</td><td>15</td><td>16</td><td>17</td></tr> <tr><td>18</td><td>19</td><td>20</td><td>21</td><td>22</td><td>23</td><td>24</td></tr> <tr><td>25</td><td>26</td><td>27</td><td>28</td><td>29</td><td>30</td><td></td></tr> <tr><td></td><td></td><td></td><td></td><td></td><td></td><td></td></tr> </table>		S	M	T	W	Th	F	Sa					1	2	3	4	5	6	7	8	9	10	11	12	13	14	15	16	17	18	19	20	21	22	23	24	25	26	27	28	29	30									Notes:
S	M	T	W	Th	F	Sa																																																																																																		
						1																																																																																																		
2	3	4	5	6	7	8																																																																																																		
9	10	11	12	13	14	15																																																																																																		
16	17	18	19	20	21	22																																																																																																		
23	24	25	26	27	28	29																																																																																																		
30																																																																																																								
S	M	T	W	Th	F	Sa																																																																																																		
				1	2	3																																																																																																		
4	5	6	7	8	9	10																																																																																																		
11	12	13	14	15	16	17																																																																																																		
18	19	20	21	22	23	24																																																																																																		
25	26	27	28	29	30																																																																																																			

WEST ENTRANCE AT FLORIDA MILITARY ACADEMY,
GULFPORT, FLORIDA—18



**The Main Gate of the Florida Military Academy,
now Stetson University College of Law, around 1935.**

NOVEMBER 2012

Sunday	Monday	Tuesday	Wednesday	Thursday	Friday	Saturday																																																																																																		
				1	2 City of Imagination Art Exhibit Opening Reception, Theater 6 p.m. Art Walk, 6 - 10 p.m.	3 Lion's Pancake Breakfast 7 - 11 a.m. City-Wide Yard Sale Art Under the Oaks Clymer Park																																																																																																		
4 Daylight Savings	5	6 Gulfport Fresh Market 9 a.m. Council Meeting City Hall, 7 p.m.	7 Planning and Zoning City Hall, 6:30 p.m.	8	9	10																																																																																																		
11 Veterans Day	12 CITY HALL CLOSED	13 Gulfport Fresh Market 9 a.m.	14 City of Gulfport Volunteer Luncheon Board of Adjustment City Hall, 6:30 p.m.	15	16	17 Historic Museum Board Mtg. 10 a.m. Art Walk, 6 - 10 p.m.																																																																																																		
18	19	20 Gulfport Fresh Market 9 a.m. Gulfport Senior Ctr. Thanksgiving Dinner Council Meeting City Hall, 7 p.m.	21 Thursdays trash trash pickup today Historic Preservation Museum, 5:30 p.m.	22 Thanksgiving No Trash Pick-up CITY HALL CLOSED	23 Regular Trash Pick up today CITY HALL CLOSED	24																																																																																																		
25	26	27 Gulfport Fresh Market 9 a.m.	28	29	30																																																																																																			
		October 2012 <table><tr><td>S</td><td>M</td><td>T</td><td>W</td><td>Th</td><td>F</td><td>Sa</td></tr><tr><td></td><td>1</td><td>2</td><td>3</td><td>4</td><td>5</td><td>6</td></tr><tr><td>7</td><td>8</td><td>9</td><td>10</td><td>11</td><td>12</td><td>13</td></tr><tr><td>14</td><td>15</td><td>16</td><td>17</td><td>18</td><td>19</td><td>20</td></tr><tr><td>21</td><td>22</td><td>23</td><td>24</td><td>25</td><td>26</td><td>27</td></tr><tr><td>28</td><td>29</td><td>30</td><td>31</td><td></td><td></td><td></td></tr><tr><td></td><td></td><td></td><td></td><td></td><td></td><td></td></tr></table>		S	M	T	W	Th	F	Sa		1	2	3	4	5	6	7	8	9	10	11	12	13	14	15	16	17	18	19	20	21	22	23	24	25	26	27	28	29	30	31											December 2012 <table><tr><td>S</td><td>M</td><td>T</td><td>W</td><td>Th</td><td>F</td><td>Sa</td></tr><tr><td></td><td></td><td></td><td></td><td></td><td></td><td>1</td></tr><tr><td>2</td><td>3</td><td>4</td><td>5</td><td>6</td><td>7</td><td>8</td></tr><tr><td>9</td><td>10</td><td>11</td><td>12</td><td>13</td><td>14</td><td>15</td></tr><tr><td>16</td><td>17</td><td>18</td><td>19</td><td>20</td><td>21</td><td>22</td></tr><tr><td>23</td><td>24</td><td>25</td><td>26</td><td>27</td><td>28</td><td>29</td></tr><tr><td>30</td><td>31</td><td></td><td></td><td></td><td></td><td></td></tr></table>		S	M	T	W	Th	F	Sa							1	2	3	4	5	6	7	8	9	10	11	12	13	14	15	16	17	18	19	20	21	22	23	24	25	26	27	28	29	30	31						Notes:
S	M	T	W	Th	F	Sa																																																																																																		
	1	2	3	4	5	6																																																																																																		
7	8	9	10	11	12	13																																																																																																		
14	15	16	17	18	19	20																																																																																																		
21	22	23	24	25	26	27																																																																																																		
28	29	30	31																																																																																																					
S	M	T	W	Th	F	Sa																																																																																																		
						1																																																																																																		
2	3	4	5	6	7	8																																																																																																		
9	10	11	12	13	14	15																																																																																																		
16	17	18	19	20	21	22																																																																																																		
23	24	25	26	27	28	29																																																																																																		
30	31																																																																																																							



A Dance at the Gulfport Casino in the 1950s.

DECEMBER 2012

Sunday	Monday	Tuesday	Wednesday	Thursday	Friday	Saturday																																																																																				
						1 Lion's Club Pancake Breakfast 7 a.m. - 11 a.m.																																																																																				
2	3 City of Gulfport Holiday Tree Lighting and Luminaries Cylmer Park, 7 p.m.	4 Gulfport Fresh Market 9 a.m. Council Meeting City Hall, 7 p.m.	5 Planning and Zoning City Hall, 6:30 p.m.	6	7 City of Imagination Art Exhibit Opening Reception, Theater 6 p.m. Art Walk, 6 - 10 p.m.	8 BCYC Christmas Boat Parade *HolidayHoopla Beach Blvd. 10 a.m. - 6 p.m.																																																																																				
9 Chanukkah	10 City of Gulfport Reassurance Dinner Senior Center Crime Watch Mtg. Neighborhood Ctr., 7 p.m.	11 Gulfport Fresh Market 9 a.m.	12 Board of Adjustment City Hall, 6:30 p.m.	13 Lions Toys for Tots	14 Lions Toys for Tots Lions Carols by candlelight	15 Historic Museum Board Mtg. 10 a.m. Lions Toys for Tots Merchant Santa Speedo Run Art Walk, 6 - 10 p.m.																																																																																				
16	17	18 Gulfport Fresh Market 9 a.m. Council Meeting City Hall, 7 p.m.	19 Historic Preservation Museum, 5:30 p.m.	20 C.E.R.T. Mtg. City Hall, 6:30 p.m.	21 Dec. Solstice	22																																																																																				
23	24 Christmas Eve	25 Christmas Day No trash pick up CITY HALL CLOSED	26 Tuesdays trash pickup today No yard waste pickup this week	27 Council Workshop	28	29																																																																																				
30	31 New Year's Eve New Years Eve Dance, Casino	November 2012 <table> <tr><th>S</th><th>M</th><th>T</th><th>W</th><th>Th</th><th>F</th><th>Sa</th></tr> <tr><td></td><td></td><td></td><td></td><td>1</td><td>2</td><td>3</td></tr> <tr><td>4</td><td>5</td><td>6</td><td>7</td><td>8</td><td>9</td><td>10</td></tr> <tr><td>11</td><td>12</td><td>13</td><td>14</td><td>15</td><td>16</td><td>17</td></tr> <tr><td>18</td><td>19</td><td>20</td><td>21</td><td>22</td><td>23</td><td>24</td></tr> <tr><td>25</td><td>26</td><td>27</td><td>28</td><td>29</td><td>30</td><td></td></tr> </table>		S	M	T	W	Th	F	Sa					1	2	3	4	5	6	7	8	9	10	11	12	13	14	15	16	17	18	19	20	21	22	23	24	25	26	27	28	29	30		January 2013 <table> <tr><th>S</th><th>M</th><th>T</th><th>W</th><th>Th</th><th>F</th><th>Sa</th></tr> <tr><td></td><td></td><td>1</td><td>2</td><td>3</td><td>4</td><td>5</td></tr> <tr><td>6</td><td>7</td><td>8</td><td>9</td><td>10</td><td>11</td><td>12</td></tr> <tr><td>13</td><td>14</td><td>15</td><td>16</td><td>17</td><td>18</td><td>19</td></tr> <tr><td>20</td><td>21</td><td>22</td><td>23</td><td>24</td><td>25</td><td>26</td></tr> <tr><td>27</td><td>28</td><td>29</td><td>30</td><td>31</td><td></td><td></td></tr> </table>		S	M	T	W	Th	F	Sa			1	2	3	4	5	6	7	8	9	10	11	12	13	14	15	16	17	18	19	20	21	22	23	24	25	26	27	28	29	30	31			Notes:
S	M	T	W	Th	F	Sa																																																																																				
				1	2	3																																																																																				
4	5	6	7	8	9	10																																																																																				
11	12	13	14	15	16	17																																																																																				
18	19	20	21	22	23	24																																																																																				
25	26	27	28	29	30																																																																																					
S	M	T	W	Th	F	Sa																																																																																				
		1	2	3	4	5																																																																																				
6	7	8	9	10	11	12																																																																																				
13	14	15	16	17	18	19																																																																																				
20	21	22	23	24	25	26																																																																																				
27	28	29	30	31																																																																																						

Clubs and Organizations

LOCAL ORGANIZATIONS	MEETING DATE/TIME	MEETING LOCATION	ADDRESS	PHONE
1 st Florida Frontiers	Every 4 th Thursday	Gulfport Arts Center	2726 54th St. S. 33707	744-7051
49 th St. S. Business Association (SO49)	Every 2 nd Wednesday	Gulfport Neighborhood Center	1617 49 th St. S. 33707	323-3455
Andy Anderson Post 125	3 rd Mon. 6:30 pm Ext. Mtg. 7 pm General	American Legion Hall	6440 5 th Ave. S. 33707	347-6085
Andy Anderson Post 125 Ladies Auxiliary	2 nd Tues. 6:30 pm Ext. Mtg. 7 pm General	American Legion Hall	6440 5 th Ave. S. 33707	347-6085
American Legion, Son's of	Last Mon. 7 pm	American Legion Hall	6440 5 th Ave. S. 33707	347-6085
Boca Ciega Yacht Club	3 rd Frid. 8 pm	Yacht Club	4600 Tifton Dr. S. 33711	321-7295
C.E.R.T.	3 rd Mon.	City Hall - Chambers	2401 53 rd St. S. 33707	893-1062
Circle of Friends of the Gulfport Library	Thursdays, 10 a.m. (Friends Room)	Gulfport Library	5501 28 th Ave. S. 33707	384-4171
City of Imagination	TBA	Gulfport Arts Center	2726 54th St. S.	686-2564
Growing Green-Peaceful Plate	TBA	TBA	www.peacefulplate.org peaceful.plate@yahoo.com	557-5572
Gulfport Chamber of Commerce	Mixers – 3 rd Thurs. , 5:30 p.m. Board Mtg. 3 rd Thurs. 9 a.m.	TBA	4926 Gulfport Blvd. S. P.O. Box 5212, 33737	344-3711
Gulfport Community Players, Inc.	To Be Announced Advanced Ticket Sales	Back Door Theater Catherine Hickman Theater	4919 17 th Ave. S. 33707 5501 26 th Ave. S.	322-0316 322-0316
Gulfport Crime Watch	2 nd Mon., 7 p.m.	Neighborhood Center	1617 49 th St. S.	327-3509
GULFPORT HISTORICAL SOCIETY, INC. & MUSEUM	2 ND SAT. 9:30 AM SEPT./NOV./JAN./APRIL MON-FRI 2-4 P.M., SAT., 10 AM-NOON	GULFPORT HISTORICAL MUSEUM	MAILING: P.O. BOX 5152, 33737 5301 28 TH AVE. S. 33707	321-0505
Gulfport Lion's Club	2 nd & 4 th Tues. 7 pm	Gulfport Lion's Center	4630 Tifton Dr. S. 33711	321-5717
Gulfport Merchants Assoc.	2 nd Tues., 5:30 pm	TBA	P.O. Box 5115, Gulfport, FL 33778	439-1485
Gulfport Softball Boomerangs	Tues., Thurs. & Sat. 8 am – Noon	Hoyt Field	56 th St. S. & 23 rd Ave. S.	588-0404
Gulfport Yacht Club	3 rd Wednesday of each month	4638 Del Rio Way S.	4638 Del Rio Way S.	321-8364
Knights of Columbus Plus XII Council 5131	4 th Tuesday 7 p.m.	Holy Name Church Goodman Center	58 th & 15 th Ave. S.	347-9989

Clubs and Organizations continued...

LOCAL ORGANIZATIONS	MEETING DATE/TIME	MEETING LOCATION	ADDRESS	PHONE
Little League Baseball	March-June/September-November	Lum Atkinson Field/Jon	Tangerine & 55 th St. S.	656-8472
T-Ball, Minor Ball, Major Ball	Ages 5-16 Boy/Girls	Little League Field/Kim	Tangerine & 55 th St. S.	688-4878
Senior Ball, Big League Ball	To Be Announced	Hoyt Field/Bruce	56 th St. S. & 23 rd Ave. S.	327-7383
Women's Softball	May-Sept. 7-10 pm	Hoyt Field John Lapham	56 th St. S. & 23 rd Ave. S.	893-1079
SCOUTING		SCOUT HALL		
Boy Scouts	To Be announced	Eric Voorhees	5315 28 th Ave. S.	638-1319
Cub Scout Pack 300 7-9 yrs.	Tues. 6- 8:30 pm	Frank Zlgmund	5315 28 th Ave. S.	364-0977
Cub Scout Pack 300	Wed. 6- 8:30 pm	Frank Zlgmund	5315 28 th Ave. S.	364-0977
Girl Scout Troop 255 Jr. Cadets	Mon. 2:25 - 5 pm	Kristen Maselle	5315 28 th Ave. S.	743-5008
Girl Scout Troop 900	Every other Fri. 6:30 – 9 pm	Denise Chapmen	5315 28 th Ave. S.	482-5487
Girl Scout Troop 395	2 nd Sun. 3 – 5 pm	Christine Brown	5315 28 th Ave. S.	501-5857
Brownies Troop 824	Tues. 2:45 – 4:45 pm	Kristen Maselli	5315 28 th Ave. S.	743-5008
Girl Scout Troup 987 & 989	Mon. 6:30 - 8 p.m.	Sharon Smith Karen Macauley	5315 28 th Ave. S.	432-6133 525-3937
Brownies Troup 997	Wed. 4:15 -6:15 p.m.	Cheryl Hunt	5315 28 th Ave. S.	326-2838
Fire Explorers (teens)	Call for dates and time	Fire Station	5314 23 rd Ave. S. 33707	893-1062
Police Explorers (teens)	Mon. 7 p.m.	Police Dept. Detective Hanh Pham	2401 53 rd St. S. 33707	893-1654
Sea Explorers (teens)	Sun. 7 p.m.	B.C.Y.C. - Tony Angle	4600 Tifton Dr. S. 33711	345-9837
Senior Center Foundation	Last Thursday of the Month – 8:30 a.m.	Senior Center	5501 27 th Ave. S.	893-1231
Teen Council, Gulfport	3 rd Thursday of the Month – 5 p.m.	Recreation Center	5730 Shore Blvd. S.	893-1592
Women's Club of Gulfport GFWC & FFWC Affiliated	2 nd Wed. at Noon – Oct. – May	Town Shores Club House	3210 59 th St. S.	345-9491

Places of Worship

Church of Christ
901 49th Street South
321-2721

The Church of Jesus Christ
5425 Gulfport Blvd.
322-5650

Congregation Beth Sholom
1844 54th Street South
321-3380

Faith Cathedral International Church
1617 49th Street South
866-8469

First United Methodist Church
2728 53rd Street South
321-3620

Gulfport Presbyterian Church
5313 27th Avenue South
321-8086

Gulfport Church of the Nazarene
1000 55th St S.
321-2721

Holy Name Church
5800 15th Avenue South
347-9989

Jehovah's Witnesses Gulfport Congregation
1219 53rd Street South
321-3862

Life Empowerment Worship Center
838 49th St.
321-5433

St Luke Church of God Ministry
5213 13th Ave. S.
323-0726

Slavic Evangelical Baptist Church
2728 53rd St. S.
321-3620

Southside Church of Jesus Christ
5425 Gulfport Blvd. S.
322-5650

Union Missionary Baptist
1100 49th St.
321-7355

Notes

Cover image: The first Casino c. 1910

2011-2012 Calendar Theme: Historic Postcards From Gulfport

Published by the City of Gulfport and the Gulfport Historical Society, Editor: Gail Biron
Co-Editor, Consultant and images provide by: Lynne Brown, Gulfport Historical Society

FROM: _____

TO: _____

