

1999 Calendar

Gulfport, Florida

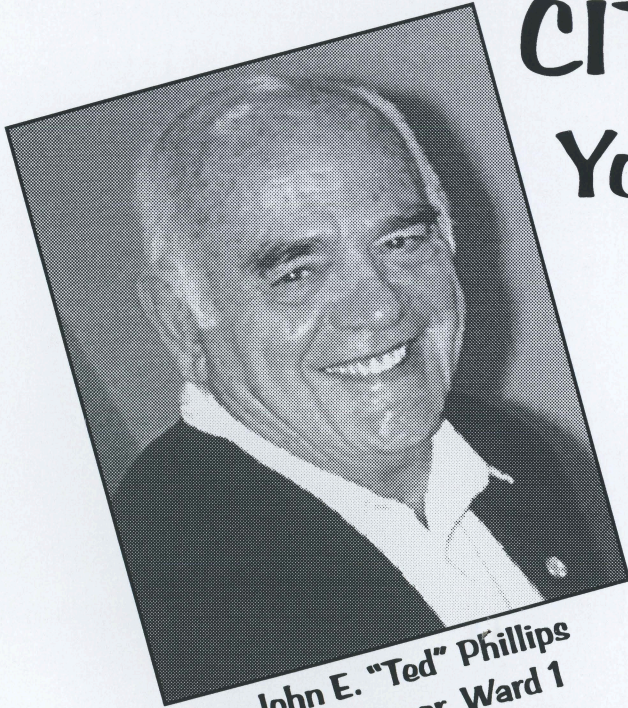
Welcome to
Gulfport
Donated By Chamber Of Commerce

Our Open Spaces - Parks, Gardens, Lakes and Ponds

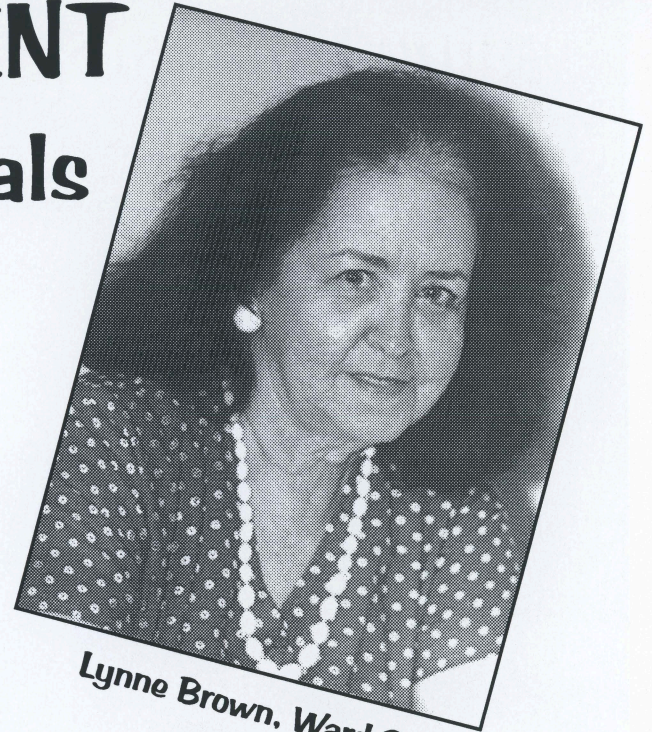


CITY GOVERNMENT

Your Elected Officials



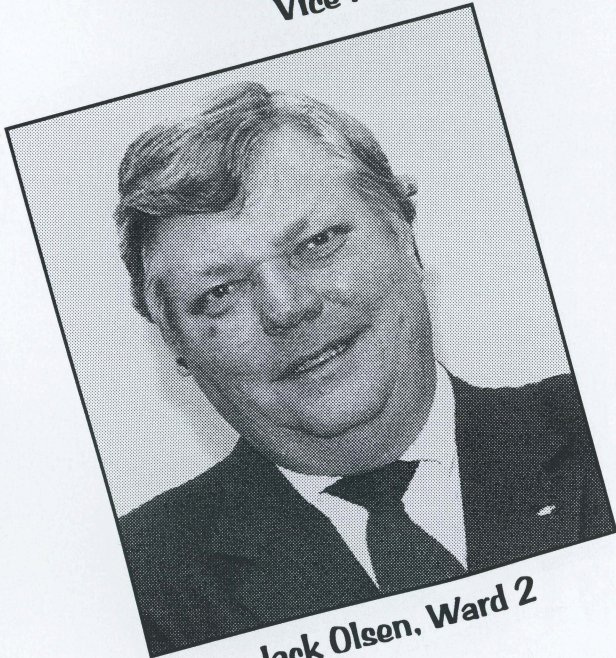
John E. "Ted" Phillips
Vice Mayor, Ward 1



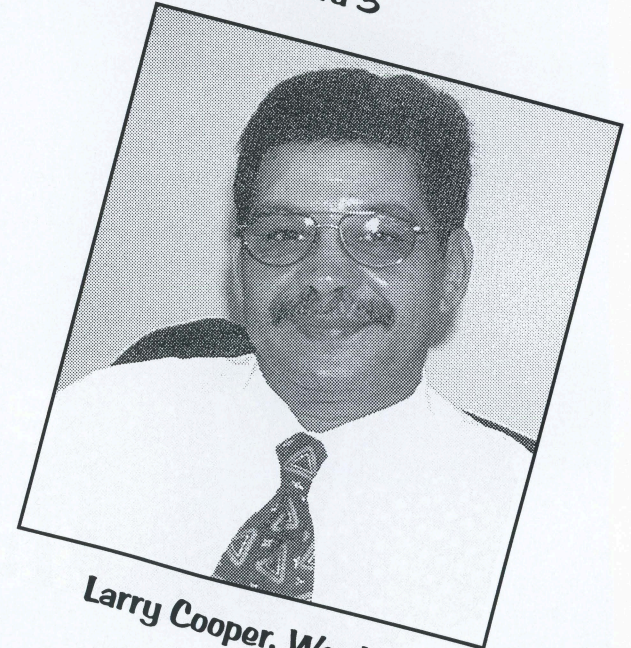
Lynne Brown, Ward 3



Mike Yates, Mayor



Jack Olsen, Ward 2



Larry Cooper, Ward 4

"A Full Service City"

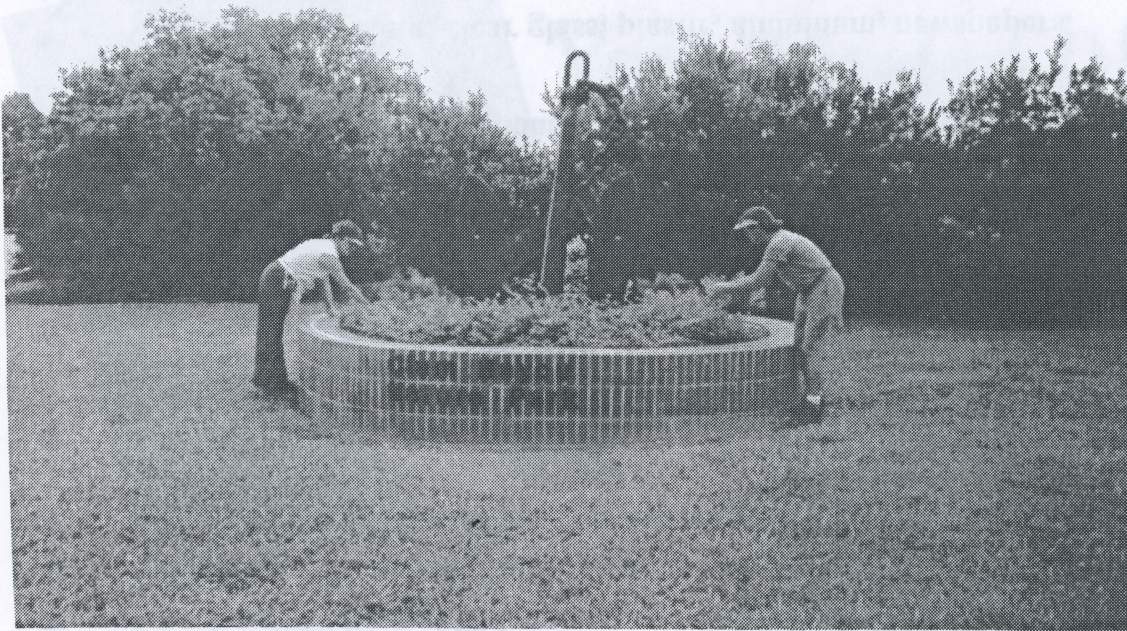
Where to Reach Us

911 - POLICE - FIRE - PARAMEDICS - EMERGENCY - 911

POLICE (NON-EMERGENCY)	893-1030	UTILITY BILLING	893-1000
FIRE/E M S (NON-EMERGENCY)	893-1059	BUILDING/CODE ENFORCEMENT	893-1000
CITY HALL/INFORMATION	893-1000	SANITATION/TRASH PICKUP	893-1000
SENIOR CENTER	893-2237	CITY MANAGER/CITY CLERK	893-1000
G E M S	893-2242	MARINA - SHIP STORE	893-1071
COMMUNITY CENTER	893-1068	LIBRARY	893-1074
REASSURANCE	893-2237	CASINO	893-1070

Special Services

- ★ City Hall is the location for paying Water/Sewer, Florida Power, General Telephone, and Time Warner Cable bills.
- ★ Check out Audio and Video tapes, as well as books, at the Library and attend children's story time.
- ★ Reassurance Program providing daily contact for residents living alone.
- ★ Gulfport Extended Mini-Bus Service (G.E.M.S.) provides transportation from home to doctor or store for elderly and/or handicapped.
- ★ Senior Center provides Congregate Dining and food commodities as well as assistance with Social Services, Social Security and Income Taxes.
- ★ Tot Time day care three days a week; Pre-School program of three or five days a week; and daily after-school recreation programs are provided at the Community Center.
- ★ Full summer recreation program for children ages 5 through 13.
- ★ Ships' Store at Marina and boat ramp.
- ★ Building Permits, Occupational Licenses, Inspections and Beach Parking stickers can be obtained at the Public Services Building.
- ★ Curb side Recycling; clear glass, plastic, aluminum, newspapers.
- ★ Police and Fire Explorer Scout programs for ages 14 to 21.
- ★ FREE security surveys for City residents and business by Police Officer.
- ★ FREE Fire and Pool Safety inspections by Fire Department.



**Linda West and Cindi Para
weeding the flower bed**

City Parks Department Employees caring for our Open Spaces



**Tim Conner installing
benches at Wood Ibis Park**



**Bob Williams measuring the
Wood Ibis walking trail**



"Jake" Pauley cleaning the walks at Chase Park



**Walter "Bahama" Goode
fertilizing Chase Park**



Holiday Sanitation Schedule

★ NEW YEAR'S DAY - FRIDAY, JANUARY 1, 1999

Friday's pickup on Thursday, December 31, 1998

Thursday's pickup on Wednesday, December 30, 1998

No Yardwaste Pickup this week

★ MARTIN LUTHER KING, JR. DAY, MONDAY, JANUARY 18, 1999

No Change in Schedule

★ PRESIDENT'S DAY - MONDAY, FEBRUARY 15, 1999

No Change in Schedule

★ MEMORIAL DAY - MONDAY, MAY 31, 1999

No Change in Schedule

★ INDEPENDENCE DAY - SUNDAY, JULY 4, 1999

No Change in Schedule

★ LABOR DAY - MONDAY, SEPTEMBER 6, 1999

No Change in Schedule

★ VETERAN'S DAY - THURSDAY, NOVEMBER 11, 1999

No Change in Schedule

★ THANKSGIVING DAY - THURSDAY, NOVEMBER 25, 1999

Thursday's pickup will be on Wednesday, November 24, 1999

Friday, November 26, 1999 pickup remains on schedule

★ CHRISTMAS DAY - SATURDAY, DECEMBER 25, 1999

No Change in Schedule

Gulfport Historical Society

Officers of the Gulfport Historical Society

President Judy Ryerson

Vice President Mary Atkinson

Secretary Carol Valdes

Treasurer Chris Brown

Board Members

Louise Love Priscilla Hoon

Carole Chapple Emily Rautman

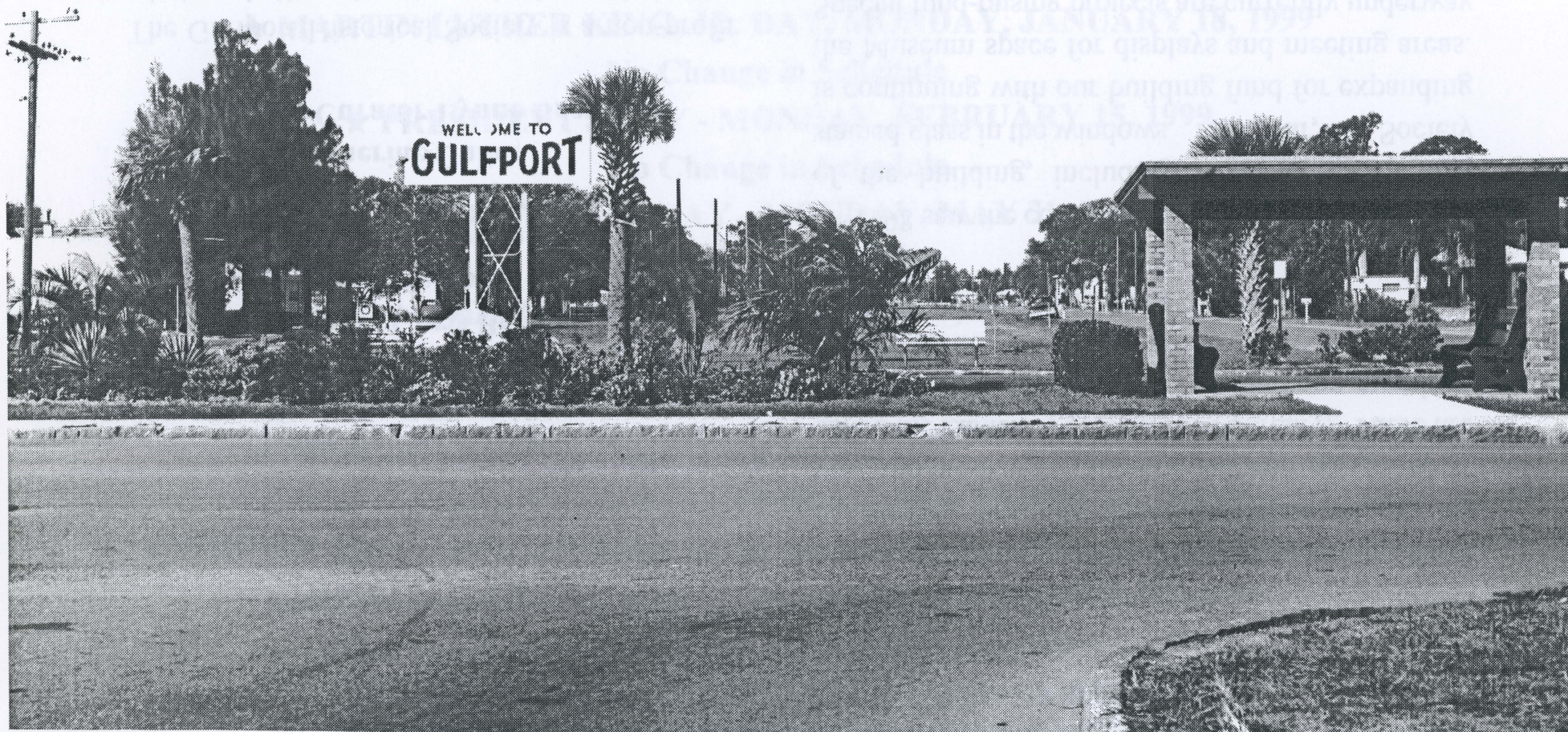
Catherine Culler

Museum Curator Lynne Brown

The Gulfport Historical Society is a non-profit association, dedicated to the gathering and sharing of the history of Gulfport and surrounding areas and promoting the preservation of our community. The Society operates The Historical Museum, at 5301 28th Avenue South, publishes a newsletter and yearly calendar and maintains a library of information on Gulfport's past.

Each year the Society presents several programs of special interest, such as Gulfport's Birthday Bash in October, Nostalgia Day to be held in March this year and the Annual Sentimental Journey (formerly called the Lantern Tour) set for February. There are many opportunities for members and non-members alike to participate as committee members, museum docents, visitors or donors.

1998 saw the complete restoration of the interior of the building, including restoring the yellow stained glass in the windows. This year, our Society is continuing with our building fund for expanding the Museum space for displays and meeting areas. Special fund-raising projects are currently underway and we are always seeking volunteers and project ideas. A life-size Memorial Orange Tree will be erected in the new addition. You may purchase a memorial leaf to be engraved with the name of a loved one or for yourself for \$50.00 or an orange for \$100.00.



Tangerine Avenue and 49th Street - Circa 1940's

January 1999

Gulfport Historical Society

Jenny Berry
REALTY
727-323-5412



....has the Key to your Real Estate needs

24-HOUR SERVICE • OPEN EVERY DAY • BUYING • SELLING • LEASING
Town Shores Plaza - 5810 28th Avenue South, Gulfport, Florida 33707
Beginning our 14th Year at this Location

SUNDAY	MONDAY	TUESDAY	WEDNESDAY	THURSDAY	FRIDAY	SATURDAY																																																																																				
<div>DECEMBER 1998</div> <table> <tr><td>S</td><td>M</td><td>T</td><td>W</td><td>T</td><td>F</td><td>S</td></tr> <tr><td></td><td></td><td>1</td><td>2</td><td>3</td><td>4</td><td>5</td></tr> <tr><td>6</td><td>7</td><td>8</td><td>9</td><td>10</td><td>11</td><td>12</td></tr> <tr><td>13</td><td>14</td><td>15</td><td>16</td><td>17</td><td>18</td><td>19</td></tr> <tr><td>20</td><td>21</td><td>22</td><td>23</td><td>24</td><td>25</td><td>26</td></tr> <tr><td>27</td><td>28</td><td>29</td><td>30</td><td>31</td><td></td><td></td></tr> </table>	S	M	T	W	T	F	S			1	2	3	4	5	6	7	8	9	10	11	12	13	14	15	16	17	18	19	20	21	22	23	24	25	26	27	28	29	30	31			<div>FEBRUARY 1999</div> <table> <tr><td>S</td><td>M</td><td>T</td><td>W</td><td>T</td><td>F</td><td>S</td></tr> <tr><td></td><td>1</td><td>2</td><td>3</td><td>4</td><td>5</td><td>6</td></tr> <tr><td>7</td><td>8</td><td>9</td><td>10</td><td>11</td><td>12</td><td>13</td></tr> <tr><td>14</td><td>15</td><td>16</td><td>17</td><td>18</td><td>19</td><td>20</td></tr> <tr><td>21</td><td>22</td><td>23</td><td>24</td><td>25</td><td>26</td><td>27</td></tr> <tr><td>28</td><td></td><td></td><td></td><td></td><td></td><td></td></tr> </table>	S	M	T	W	T	F	S		1	2	3	4	5	6	7	8	9	10	11	12	13	14	15	16	17	18	19	20	21	22	23	24	25	26	27	28										1 NEW YEAR'S DAY Gallery Walk Museum Open 6-9 pm City Hall Closed	2 Lions' Pancake Breakfast
S	M	T	W	T	F	S																																																																																				
		1	2	3	4	5																																																																																				
6	7	8	9	10	11	12																																																																																				
13	14	15	16	17	18	19																																																																																				
20	21	22	23	24	25	26																																																																																				
27	28	29	30	31																																																																																						
S	M	T	W	T	F	S																																																																																				
	1	2	3	4	5	6																																																																																				
7	8	9	10	11	12	13																																																																																				
14	15	16	17	18	19	20																																																																																				
21	22	23	24	25	26	27																																																																																				
28																																																																																										
3	4	5 Friends of Library 2:30 pm Council Meeting	6 Planning and Zoning Board	7	8	9 S.H.A.R.E Sign-Up																																																																																				
10 Boomerangs v Kids & Kubs Hoyt Field	11	12 Historical Society Meeting 7:30 pm	13 Bd. Of Adjustment	14 Garden & Bird Club Palm Tour and Boat to Egmont Key Work Session	15 MLK, JR BIRTHDAY	16																																																																																				
17	18 City Hall Closed	19 Council Meeting	20	21	22	23 S.H.A.R.E. Distribution Day War Mothers' Card Party																																																																																				
24 Boomerangs v Kids & Kubs at North Shore	25	26	27 Women's Club Fashion Show and C... Party	28	29	30 January																																																																																				
31				Work Session																																																																																						



Entrance to Redevelopment Area in Clymer Park

February 1999

Gulfport Historical Society



Gulfport's Oldest Business - Locally Owned and Operated
#1 in Gulfport/Pasadena Real Estate Sales!

List with Caldwell Realty!

We're Here to Help! Thank you!

321-1212

SUNDAY	MONDAY	TUESDAY	WEDNESDAY	THURSDAY	FRIDAY	SATURDAY
	1	2 Friends of Library 2:30 pm Council Meeting	3 Planning & Zoning Board	4	5 Gallery Walk Museum Open 6-9 pm	6 Community Players "Suite Hearts" 8 pm
7 Community Players 2:30 pm	8	9 Historical Society Meeting 7:30 pm	10 Bd. Of Adjustment	11 Garden and Bird Club Video Community Players 8 pm Work Session	12 LINCOLN S BIRTHDAY Community Players 8 pm	13 S.H.A.R.E Sign-Up GHS SENTIMENTAL JOURNEY 11 am - 2 pm Players - 8 pm
14 VALENTINE'S DAY Community Players 2:30 pm	15 PRESIDENT'S DAY	16 Coast Guard Safe Boating Class (6 wks) Council Meeting	17 ASH WEDNESDAY	18 Coast Guard Safe Boating Class (6 wks)	19	20
21	22 WASHINGTON S BIRTHDAY ORTHODOX LENT BEGINS	23	24	25 Work Session	26	27 S.H.A.R.E. Distribution Day Lions' Walk-A-Thon War Mothers' Lunch and Card Party
28				<div> JANUARY 1999 S M T W T F S 1 2 3 4 5 6 7 8 9 10 11 12 13 14 15 16 17 18 19 20 21 22 23 24 25 26 27 28 29 30 31 </div>	<div> MARCH 1999 S M T W T F S 1 2 3 4 5 6 7 8 9 10 11 12 13 14 15 16 17 18 19 20 21 22 23 24 25 26 27 28 29 30 31 </div>	February



Gulfport Marina during the early 1950's

March 1999

The Apothecary, of Gulfport, Inc.

Gulfport Historical Society

PERSONALIZED SERVICE
FREE DELIVERY

Phone 727-321-3000
Fax 727-344-5620

5802 28th Avenue South
Gulfport, Florida 33707

SUNDAY	MONDAY	TUESDAY	WEDNESDAY	THURSDAY	FRIDAY	SATURDAY
	1	2 City Primary Election Friends of Library 2:30 pm Council Meeting	3 Planning & Zoning Board	4	5 Gallery Walk Museum Open 6-9 pm	6 Lions' Pancake Breakfast
7	8	9	10 Bd. Of Adjustment	11 Garden/Bird Club Bus Trip to Anderson Park and Weeki Wachee Work Session	12 Friends of Library Book Sale 6-9 pm	13 S.H.A.R.E. Sign-Up NOSTALGIA DAY Museum 10am-3pm Friends of Library Book Sale 6-9 pm
14	15	16 City Election Run-Off Council Meeting	17 <small>ST PATRICK'S DAY</small>	18	19	20 <small>SPRING BEGINS</small>
21	22	23	24	25	26 Methodist Church Spring Fest	27 S.H.A.R.E. Distribution Day Methodist Church Spring Fest War Mother's Card Party
28 <small>PALM SUNDAY</small>	29	30	31	<div> FEBRUARY 1999 S M T W T F S 1 2 3 4 5 6 7 8 9 10 11 12 13 14 15 16 17 18 19 20 21 22 23 24 25 26 27 28 </div>	<div> APRIL 1999 S M T W T F S 1 2 3 4 5 6 7 8 9 10 11 12 13 14 15 16 17 18 19 20 21 22 23 24 25 26 27 28 29 30 </div>	<div>March</div>



New pavilion at Clam Bayou

April
1999

Gulfport Historical Society

Sir Speedy[®]

PRINTING • COPYING • DIGITAL NETWORK

4855 Park Street North

St. Petersburg, FL 33709

Phone (727) 545-9000 • Fax (727) 546-9463

Sir Speedy Bulletin Board (727) 328-0914

E-Mail: imagectr@intnet.net

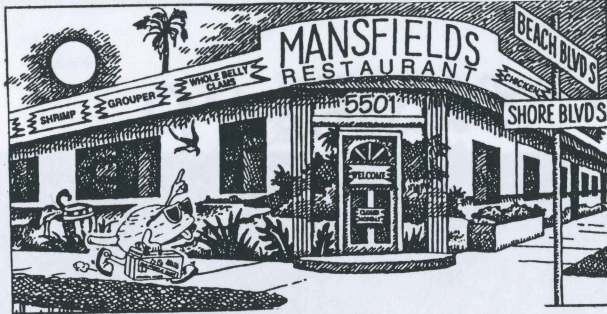
SUNDAY	MONDAY	TUESDAY	WEDNESDAY	THURSDAY	FRIDAY	SATURDAY
<div>MARCH 1999</div> <div>S M T W T F S</div> <div>1 2 3 4 5 6</div> <div>7 8 9 10 11 12 13</div> <div>14 15 16 17 18 19 20</div> <div>21 22 23 24 25 26 27</div> <div>28 29 30 31</div>	<div>MAY 1999</div> <div>S M T W T F S</div> <div>1</div> <div>2 3 4 5 6 7 8</div> <div>9 10 11 12 13 14 15</div> <div>16 17 18 19 20 21 22</div> <div>23 24 25 26 27 28 29</div> <div>30 31</div>			<div>1</div> <div>PASSOVER</div> <div>Work Session</div>	<div>2</div> <div>Good Friday</div> <div>Gallery Walk Museum Open 6-9 pm</div>	<div>3</div> <div>City Spring Festival Chamber of Commerce Showcase</div>
<div>4</div> <div>DAYLIGHT SAVINGS TIME BEGINS</div> <div>Sunrise Service Clymer Park</div>	<div>5</div>	<div>6</div> <div>Friends of Library Annual Meeting 2:30 pm Council Meeting</div>	<div>7</div> <div>Bd. Of Adjustment</div>	<div>8</div> <div>Garden/Bird Club Annual Flower Show and Business Meeting</div>	<div>9</div>	<div>10</div> <div>S.H.A.R.E. Sign-Up Community Players "Death By Arrangement" 8 pm</div>
<div>11</div> <div>ORTHODOX EASTER</div> <div>Community Players 2.30 pm</div>	<div>12</div>	<div>13</div> <div>Historical Society Annual Meeting & Potluck Supper 7 pm</div>	<div>14</div>	<div>15</div> <div>Community Players 8pm Work Session</div>	<div>16</div> <div>Community Players 8 pm</div>	<div>17</div> <div>Community Players 8 pm</div>
<div>18</div> <div>Community Players 2:30 pm</div>	<div>19</div>	<div>20</div> <div>Council Meeting</div>	<div>21</div>	<div>22</div>	<div>23</div>	<div>24</div> <div>S H.A.R.E DISTRIBUTION DAY WAR MOTHERS CARD PARTY</div>
<div>25</div>	<div>26</div>	<div>27</div>	<div>28</div>	<div>29</div> <div>Work Session</div>	<div>30</div>	<div>April</div>



Fishing Pier - 1940's

May 1999

Gulfport Historical Society



WINGS
½ LB. BURGERS
CATFISH
REAL MASHED POTATOES
SOUPS AND CHOWDERS

BBQ BEEF RIBS
SIRLOINS
FRESH GROUPE

DAILY
SPECIALS

HAPPY HOUR
2:00 - 7:00 PM
SERVING BEER
WINE - COCKTAILS
FROZEN DRINKS

TUES-THURS
11 AM - 10 PM
FRI-SAT
11 AM-MIDNIGHT
SUN - 1-8 PM
CLOSED MONDAY

5501 Shore Blvd. On Gulfport Beach

347-6299

SUNDAY	MONDAY	TUESDAY	WEDNESDAY	THURSDAY	FRIDAY	SATURDAY																																																																																				
<div>APRIL 1999</div> <table> <tr><td>S</td><td>M</td><td>T</td><td>W</td><td>T</td><td>F</td><td>S</td></tr> <tr><td></td><td></td><td></td><td></td><td>1</td><td>2</td><td>3</td></tr> <tr><td>4</td><td>5</td><td>6</td><td>7</td><td>8</td><td>9</td><td>10</td></tr> <tr><td>11</td><td>12</td><td>13</td><td>14</td><td>15</td><td>16</td><td>17</td></tr> <tr><td>18</td><td>19</td><td>20</td><td>21</td><td>22</td><td>23</td><td>24</td></tr> <tr><td>25</td><td>26</td><td>27</td><td>28</td><td>29</td><td>30</td><td></td></tr> </table>	S	M	T	W	T	F	S					1	2	3	4	5	6	7	8	9	10	11	12	13	14	15	16	17	18	19	20	21	22	23	24	25	26	27	28	29	30		<div>JUNE 1999</div> <table> <tr><td>S</td><td>M</td><td>T</td><td>W</td><td>T</td><td>F</td><td>S</td></tr> <tr><td></td><td></td><td>1</td><td>2</td><td>3</td><td>4</td><td>5</td></tr> <tr><td>6</td><td>7</td><td>8</td><td>9</td><td>10</td><td>11</td><td>12</td></tr> <tr><td>13</td><td>14</td><td>15</td><td>16</td><td>17</td><td>18</td><td>19</td></tr> <tr><td>20</td><td>21</td><td>22</td><td>23</td><td>24</td><td>25</td><td>26</td></tr> <tr><td>27</td><td>28</td><td>29</td><td>30</td><td></td><td></td><td></td></tr> </table>	S	M	T	W	T	F	S			1	2	3	4	5	6	7	8	9	10	11	12	13	14	15	16	17	18	19	20	21	22	23	24	25	26	27	28	29	30								1
S	M	T	W	T	F	S																																																																																				
				1	2	3																																																																																				
4	5	6	7	8	9	10																																																																																				
11	12	13	14	15	16	17																																																																																				
18	19	20	21	22	23	24																																																																																				
25	26	27	28	29	30																																																																																					
S	M	T	W	T	F	S																																																																																				
		1	2	3	4	5																																																																																				
6	7	8	9	10	11	12																																																																																				
13	14	15	16	17	18	19																																																																																				
20	21	22	23	24	25	26																																																																																				
27	28	29	30																																																																																							
2	3	4 Council Meeting	5 Planning & Zoning Board	6	7 Gallery Walk Museum Open 6-9 pm	8 S.H.A.R.E Sign-Up																																																																																				
9 MOTHER'S DAY	10	11	12 Bd. of Adjustment	13 Garden/Bird Club Installation Luncheon Work Session	14	15																																																																																				
16 Mother's Day	17 Summer Begins	18 Council Meeting	19	20	21	22 S.H.A.R.E Distribution Day																																																																																				
23	24	25	26	27 Work Session	28	29 War Mothers' Card Party																																																																																				
30 Memorial Day	31 City Hall Closed					May																																																																																				



Entrance to today's Fishing Pier

June 1999

Gulfport
Historical Society

Sue Hatton
Queen

Vegetable
KINGDOM

5006 22 Ave. So.
Gulfport, FL 33707
727-323-5412

Rick Del Greco
King

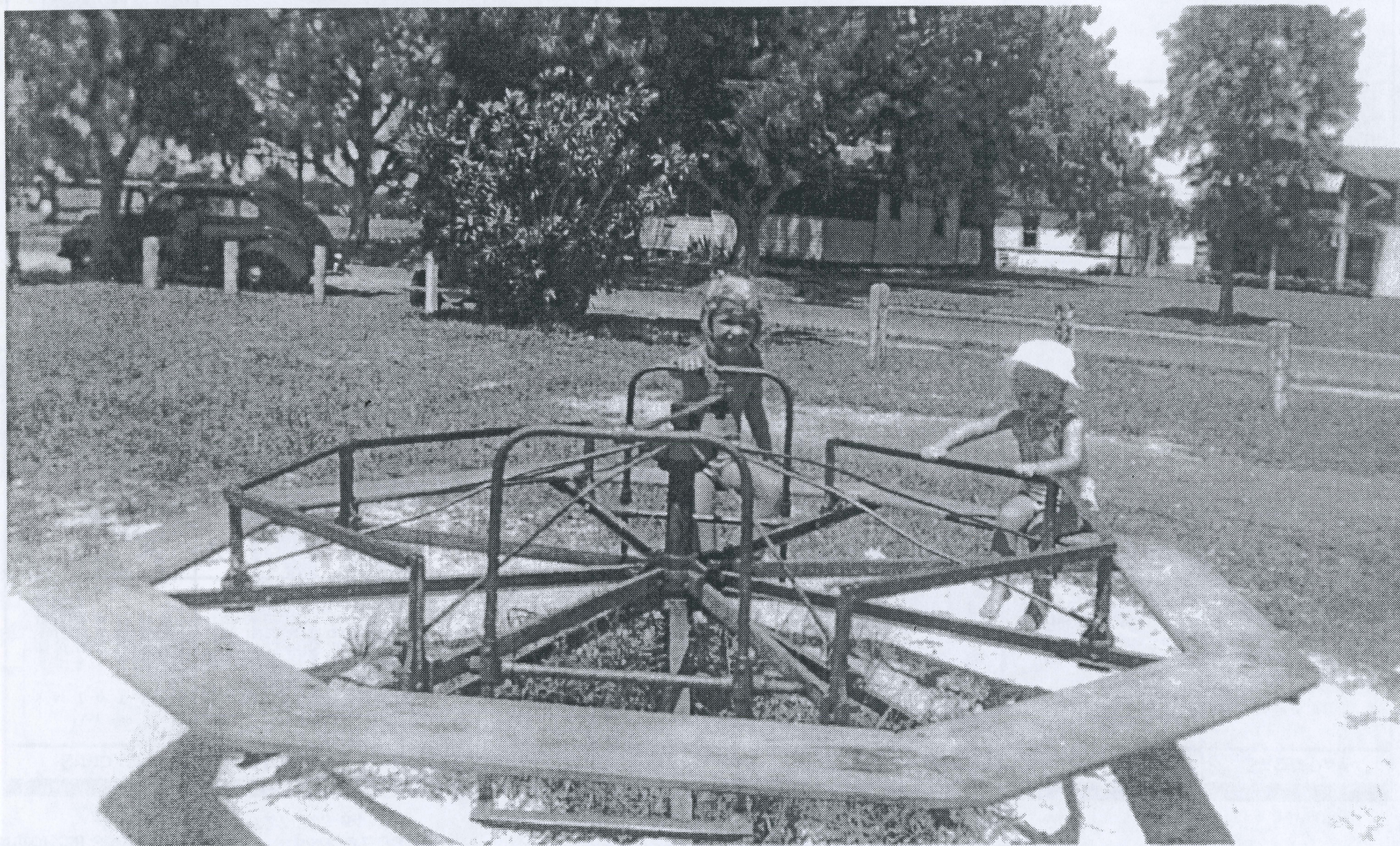
Mon - Fri 10 - 6:30
Sat 10 - 5:00

CUSTOM UPHOLSTERY & DRAPERIES BY

Ken Habershon Inc.

5125 GULFPORT BLVD. SO 321-7458

SUNDAY	MONDAY	TUESDAY	WEDNESDAY	THURSDAY	FRIDAY	SATURDAY
<div>MAY 1999</div> <div>S M T W T F S</div> <div>1</div> <div>2 3 4 5 6 7 8</div> <div>9 10 11 12 13 14 15</div> <div>16 17 18 19 20 21 22</div> <div>23 24 25 26 27 28 29</div> <div>30 31</div>	<div>JULY 1999</div> <div>S M T W T F S</div> <div>1 2 3</div> <div>4 5 6 7 8 9 10</div> <div>11 12 13 14 15 16 17</div> <div>18 19 20 21 22 23 24</div> <div>25 26 27 28 29 30 31</div>	1 Council Meeting	2 Planning & Zoning Board	3	4 Gallery Walk Museum Open 6-9 pm	5
6	7	8	9 Bd. Of Adjustment	10 Work Session	11 .	12 S.H.A.R.E. Sign-Up
13	14 FLAG DAY	15 Council Meeting	16	17	18	19 Coast Guard Safe Boating Class (3 wks)
20 FATHER'S DAY Coast Guard Safe Boating Class (3 wks)	21 SUMMER BEGINS	22	23	24	25	26 S.H.A.R.E. Distribution Day War Mothers' Card Party
27	28	29	30			
						June



Danie and Kathy Bothem at the beach in 1945

July 1999

Gulfport
Historical Society



**SAL'S TOWN SHORE
RESTAURANT**

Homestyle Cooking

347-5788

Tues-Fri. 7:00 - 2:00

Saturday 7:00 - 1:00

Sunday 7:30 - 1:00

Town Shore Plaza

5808 28th Ave. S.

Gulfport, FL 33707

GULFPORT BEACH BAZAAR

**VARIETY STORE & U.S. POST OFFICE
3115 BEACH BOULEVARD SOUTH**

381-8548

MON.-SAT. 9-5

SUN. 10-5

SUNDAY	MONDAY	TUESDAY	WEDNESDAY	THURSDAY	FRIDAY	SATURDAY
<div> <div>JUNE 1999</div> <div>S M T W T F S</div> <div> 1 2 3 4 5 6 7 8 9 10 11 12 13 14 15 16 17 18 19 20 21 22 23 24 25 26 27 28 29 30 </div> </div>	<div> <div>AUGUST 1999</div> <div>S M T W T F S</div> <div> 1 2 3 4 5 6 7 8 9 10 11 12 13 14 15 16 17 18 19 20 21 22 23 24 25 26 27 28 29 30 31 </div> </div>			1 Work Session	2 Gallery Walk Museum Open 6-9 pm	3
4 INDEPENDENCE DAY City Celebration Parade/Fireworks Lions' Bake Sale	5 City Hall Closed	6 Council Meeting	7 Bd. Of Adjustment	8	9	10 S.H.A.R.E. Sign-Up
11	12	13	14	15 Work Session	16	17
18	19	20 Council Meeting	21	22	23	24 S.H.A.R.E Distribution Day Family Community Education Card Party
25	26	27	28	29 Work Session	30	31 July




Judy Tonkin Memorial Playground at Chase Park

August 1999



JOHN TONKIN

AMERICAN ROOFING CO.



Steve Doss Realty
5211 Gulfport Boulevard
Gulfport, Florida 33707

Gulfport Historical Society

TELEPHONE
347-9295

JOHNS - MANVILLE
QUALITY BUILDING PRODUCTS

Phone: (727) 321-2121

SUNDAY	MONDAY	TUESDAY	WEDNESDAY	THURSDAY	FRIDAY	SATURDAY																																																																																				
1	2	3 Council Meeting	4 Planning & Zoning Board	5	6 Gallery Walk Museum Open 6-9 pm	7																																																																																				
8	9	10	11 Bd. Of Adjustment	12 Work Session	13	14 S.H.A.R.E. Sign-Up																																																																																				
15	16	17 Council Meeting	18	19	20	21 Family Community Education Card Party																																																																																				
22	23	24	25	26	27	28 S.H.A.R.E Distribution Day																																																																																				
29	30	31		<div data-bbox="1209 1342 1434 1533"> <p>JULY 1999</p> <table> <tr><td>S</td><td>M</td><td>T</td><td>W</td><td>T</td><td>F</td><td>S</td></tr> <tr><td></td><td></td><td></td><td></td><td>1</td><td>2</td><td>3</td></tr> <tr><td>4</td><td>5</td><td>6</td><td>7</td><td>8</td><td>9</td><td>10</td></tr> <tr><td>11</td><td>12</td><td>13</td><td>14</td><td>15</td><td>16</td><td>17</td></tr> <tr><td>18</td><td>19</td><td>20</td><td>21</td><td>22</td><td>23</td><td>24</td></tr> <tr><td>25</td><td>26</td><td>27</td><td>28</td><td>29</td><td>30</td><td>31</td></tr> </table> </div>	S	M	T	W	T	F	S					1	2	3	4	5	6	7	8	9	10	11	12	13	14	15	16	17	18	19	20	21	22	23	24	25	26	27	28	29	30	31	<div data-bbox="1486 1342 1711 1533"> <p>SEPTEMBER 1999</p> <table> <tr><td>S</td><td>M</td><td>T</td><td>W</td><td>T</td><td>F</td><td>S</td></tr> <tr><td></td><td></td><td></td><td></td><td>1</td><td>2</td><td>3</td></tr> <tr><td>4</td><td>5</td><td>6</td><td>7</td><td>8</td><td>9</td><td>10</td></tr> <tr><td>11</td><td>12</td><td>13</td><td>14</td><td>15</td><td>16</td><td>17</td></tr> <tr><td>18</td><td>19</td><td>20</td><td>21</td><td>22</td><td>23</td><td>24</td></tr> <tr><td>25</td><td>26</td><td>27</td><td>28</td><td>29</td><td>30</td><td></td></tr> </table> </div>	S	M	T	W	T	F	S					1	2	3	4	5	6	7	8	9	10	11	12	13	14	15	16	17	18	19	20	21	22	23	24	25	26	27	28	29	30		<div data-bbox="1793 1501 1940 1549"> <p>August</p> </div>
S	M	T	W	T	F	S																																																																																				
				1	2	3																																																																																				
4	5	6	7	8	9	10																																																																																				
11	12	13	14	15	16	17																																																																																				
18	19	20	21	22	23	24																																																																																				
25	26	27	28	29	30	31																																																																																				
S	M	T	W	T	F	S																																																																																				
				1	2	3																																																																																				
4	5	6	7	8	9	10																																																																																				
11	12	13	14	15	16	17																																																																																				
18	19	20	21	22	23	24																																																																																				
25	26	27	28	29	30																																																																																					



BOCA CIEGA INN, GULFPORT, FLORIDA, BATHING BEACH

Swimming - 1926

September 1999

Gulfport Historical Society



GULFPORT LIONS

MEETINGS HELD
2nd AND 4th TUESDAY
7:00 P.M.

4630 TIFTON DRIVE SOUTH • GULFPORT, FL 33707

SUNDAY	MONDAY	TUESDAY	WEDNESDAY	THURSDAY	FRIDAY	SATURDAY																																																																																											
<div>AUGUST 1999</div> <table> <tr><td>S</td><td>M</td><td>T</td><td>W</td><td>T</td><td>F</td><td>S</td></tr> <tr><td>1</td><td>2</td><td>3</td><td>4</td><td>5</td><td>6</td><td>7</td></tr> <tr><td>8</td><td>9</td><td>10</td><td>11</td><td>12</td><td>13</td><td>14</td></tr> <tr><td>15</td><td>16</td><td>17</td><td>18</td><td>19</td><td>20</td><td>21</td></tr> <tr><td>22</td><td>23</td><td>24</td><td>25</td><td>26</td><td>27</td><td>28</td></tr> <tr><td>29</td><td>30</td><td>31</td><td></td><td></td><td></td><td></td></tr> </table>	S	M	T	W	T	F	S	1	2	3	4	5	6	7	8	9	10	11	12	13	14	15	16	17	18	19	20	21	22	23	24	25	26	27	28	29	30	31					<div>OCTOBER 1999</div> <table> <tr><td>S</td><td>M</td><td>T</td><td>W</td><td>T</td><td>F</td><td>S</td></tr> <tr><td></td><td></td><td></td><td></td><td></td><td>1</td><td>2</td></tr> <tr><td>3</td><td>4</td><td>5</td><td>6</td><td>7</td><td>8</td><td>9</td></tr> <tr><td>10</td><td>11</td><td>12</td><td>13</td><td>14</td><td>15</td><td>16</td></tr> <tr><td>17</td><td>18</td><td>19</td><td>20</td><td>21</td><td>22</td><td>23</td></tr> <tr><td>24</td><td>25</td><td>26</td><td>27</td><td>28</td><td>29</td><td>30</td></tr> <tr><td>31</td><td></td><td></td><td></td><td></td><td></td><td></td></tr> </table>	S	M	T	W	T	F	S						1	2	3	4	5	6	7	8	9	10	11	12	13	14	15	16	17	18	19	20	21	22	23	24	25	26	27	28	29	30	31								1 Planning & Zoning Board	2 Work Session	3 Gallery Walk Museum Open 6-9 pm	4
S	M	T	W	T	F	S																																																																																											
1	2	3	4	5	6	7																																																																																											
8	9	10	11	12	13	14																																																																																											
15	16	17	18	19	20	21																																																																																											
22	23	24	25	26	27	28																																																																																											
29	30	31																																																																																															
S	M	T	W	T	F	S																																																																																											
					1	2																																																																																											
3	4	5	6	7	8	9																																																																																											
10	11	12	13	14	15	16																																																																																											
17	18	19	20	21	22	23																																																																																											
24	25	26	27	28	29	30																																																																																											
31																																																																																																	
5	6 LABOR DAY Lions' Fish Fry City Hall Closed	7 Council Meeting	8 Bd. Of Adjustment	9	10	11 JEWISH NEW YEAR S.H.A.R.E. Sign-Up Webb Family Reunion GHS Grounds																																																																																											
12	13	14 Coast Guard Safe Boating Class (6 wks) Historical Society Meeting 7:30 pm	15	16 Coast Guard Safe Boating Class (6 wks) Work Session	17	18																																																																																											
19	20 YOM KIPPUR	21 Council Meeting	22 AUTUMN BEGINS	23	24	25 S.H.A.R.E. Distribution Day War Mothers' Card Party																																																																																											
26	27	28	29	30 Work Session		September																																																																																											



Many outdoor weddings are held each year in the pavilion
in Clymer Park

October 1999



(727) 347 - 5521

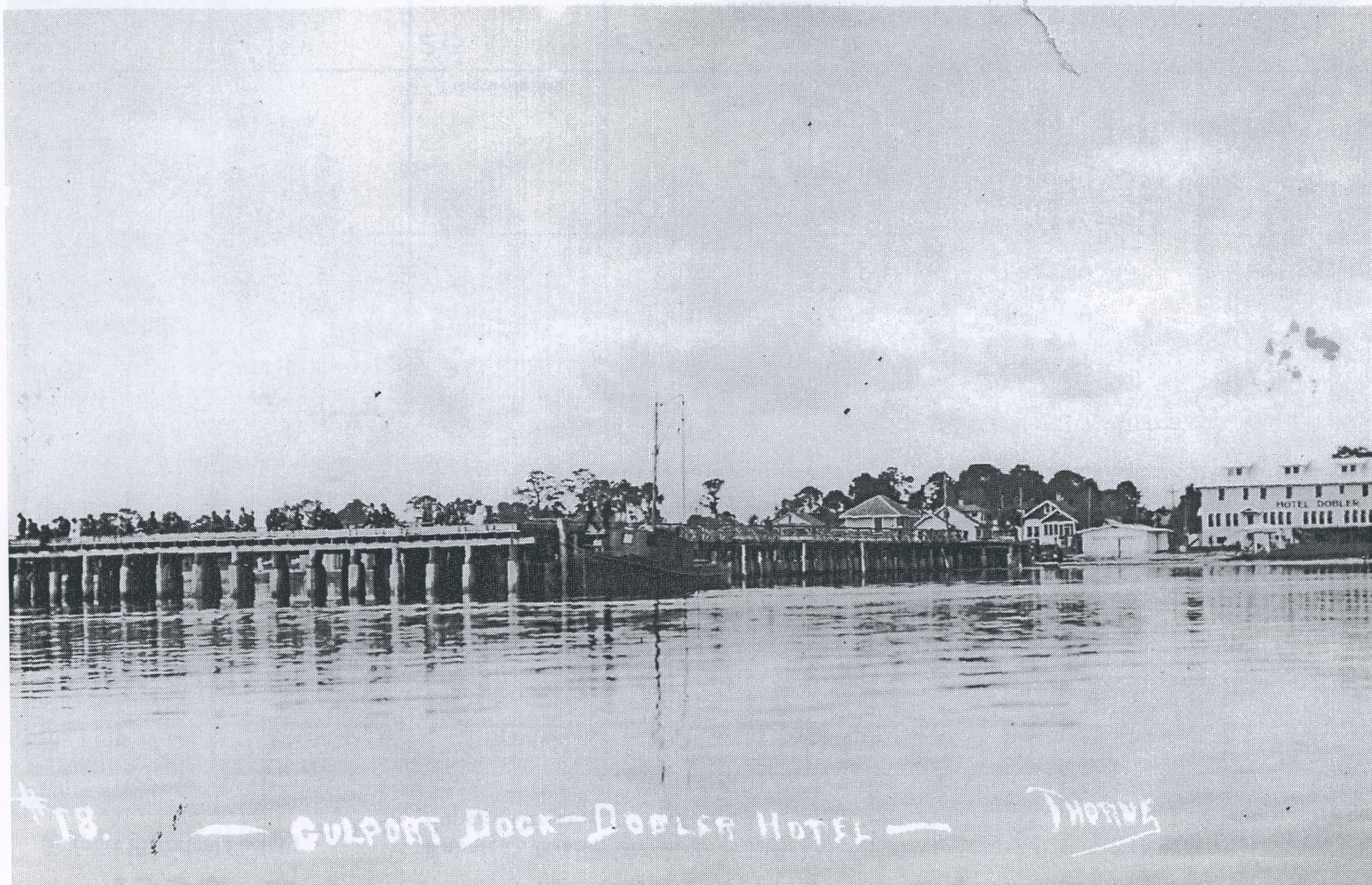
GULFPORT MEMORIAL FUNERAL HOME

Gulfport Historical Society

Robert D. Easter
Funeral Director

5601 Gulfport Blvd. So.
Gulfport, FL 33707

SUNDAY	MONDAY	TUESDAY	WEDNESDAY	THURSDAY	FRIDAY	SATURDAY
<div>SEPTEMBER 1999</div> <div>S M T W T F S</div> <div> 1 2 3 4 5 6 7 8 9 10 11 12 13 14 15 16 17 18 19 20 21 22 23 24 25 26 27 28 29 30 </div>	<div>NOVEMBER 1999</div> <div>S M T W T F S</div> <div> 1 2 3 4 5 6 7 8 9 10 11 12 13 14 15 16 17 18 19 20 21 22 23 24 25 26 27 28 29 30 </div>				1	2
3	4	5 Council Meeting	6 Planning and Zoning Board	7	8 Gallery Walk Museum Open 6-9 pm	9 S.H.A.R.E. Sign-Up Gulfport Birthday Bash at Museum 10 am - 3 pm
10	11 COLUMBUS DAY	12	13 Bd. Of Adjustment	14 Holy Name Oktoberfest Work Session	15 Holy Name Oktoberfest	16 Holy Name Oktoberfest
17 Holy Name Oktoberfest	18	19 Council Meeting	20	21	22	23 S.H.A.R.E. Distribution Day War Mothers' Card Party
24 DAYLIGHT SAVINGS TIME BEGINS	25	26	27	28	29	30 Halloween Carnival Recreation Ctr
31 HALLOWEEN				Work Session		October



Dobler Hotel/Boca Ciega Inn/Veterans' Park

November 1999

Gulfport Historical Society

GULFPORT GABBER

Your Free Newspaper

1419 49th Street South

Gulfport, FL 33707

321-6956

Celebrating our 31st Year!!!

SUNDAY	MONDAY	TUESDAY	WEDNESDAY	THURSDAY	FRIDAY	SATURDAY																																																																																																									
	1	2 ELECTION DAY Council Meeting	3 Planning & Zoning Board	4	5 Gallery Walk Museum Open 6-9 pm	5 S.H.A.R.E. Sign-Up Lions' Pancake Breakfast																																																																																																									
7	8	9 Historical Society Meeting 7:30 pm	10 Bd. Of Adjustment	11 VETERANS DAY Work Session City Hall Closed	12 Antique Car Show	13 Antique Car Show																																																																																																									
14 Antique Car Show	15	16 Council Meeting	17	18	19	20 S.H.A.R.E. Distribution Day																																																																																																									
21	22	23	24	25 THANKSGIVING City Hall Closed	26 City Hall Closed	27 War Mothers' Card Party																																																																																																									
28	29	30		<table><tr><th colspan="7">OCTOBER 1999</th></tr><tr><th>S</th><th>M</th><th>T</th><th>W</th><th>T</th><th>F</th><th>S</th></tr><tr><td></td><td></td><td></td><td></td><td></td><td>1</td><td>2</td></tr><tr><td>3</td><td>4</td><td>5</td><td>6</td><td>7</td><td>8</td><td>9</td></tr><tr><td>10</td><td>11</td><td>12</td><td>13</td><td>14</td><td>15</td><td>16</td></tr><tr><td>17</td><td>18</td><td>19</td><td>20</td><td>21</td><td>22</td><td>23</td></tr><tr><td>24</td><td>25</td><td>26</td><td>27</td><td>28</td><td>29</td><td>30</td></tr><tr><td>31</td><td></td><td></td><td></td><td></td><td></td><td></td></tr></table>	OCTOBER 1999							S	M	T	W	T	F	S						1	2	3	4	5	6	7	8	9	10	11	12	13	14	15	16	17	18	19	20	21	22	23	24	25	26	27	28	29	30	31							<table><tr><th colspan="7">DECEMBER 1999</th></tr><tr><th>S</th><th>M</th><th>T</th><th>W</th><th>T</th><th>F</th><th>S</th></tr><tr><td></td><td></td><td></td><td></td><td>1</td><td>2</td><td>3</td></tr><tr><td>4</td><td>5</td><td>6</td><td>7</td><td>8</td><td>9</td><td>10</td></tr><tr><td>11</td><td>12</td><td>13</td><td>14</td><td>15</td><td>16</td><td>17</td></tr><tr><td>18</td><td>19</td><td>20</td><td>21</td><td>22</td><td>23</td><td>24</td></tr><tr><td>25</td><td>26</td><td>27</td><td>28</td><td>29</td><td>30</td><td>31</td></tr></table>	DECEMBER 1999							S	M	T	W	T	F	S					1	2	3	4	5	6	7	8	9	10	11	12	13	14	15	16	17	18	19	20	21	22	23	24	25	26	27	28	29	30	31	November
OCTOBER 1999																																																																																																															
S	M	T	W	T	F	S																																																																																																									
					1	2																																																																																																									
3	4	5	6	7	8	9																																																																																																									
10	11	12	13	14	15	16																																																																																																									
17	18	19	20	21	22	23																																																																																																									
24	25	26	27	28	29	30																																																																																																									
31																																																																																																															
DECEMBER 1999																																																																																																															
S	M	T	W	T	F	S																																																																																																									
				1	2	3																																																																																																									
4	5	6	7	8	9	10																																																																																																									
11	12	13	14	15	16	17																																																																																																									
18	19	20	21	22	23	24																																																																																																									
25	26	27	28	29	30	31																																																																																																									



The all new Wood Ibis Park



December 1999

Gulfport Historical Society



Bay Breeze

BEAUTY SALON REDKEN

3117 Beach Blvd 343-7003

SPECIALIZING IN
SOFT, CURLY OR BODY
PERMANENTS

HOURS: 9-5 TUES. - SAT.

SUNDAY	MONDAY	TUESDAY	WEDNESDAY	THURSDAY	FRIDAY	SATURDAY																																																																																											
<div>NOVEMBER 1999</div> <table> <tr><td>S</td><td>M</td><td>T</td><td>W</td><td>T</td><td>F</td><td>S</td></tr> <tr><td>1</td><td>2</td><td>3</td><td>4</td><td>5</td><td>6</td><td></td></tr> <tr><td>7</td><td>8</td><td>9</td><td>10</td><td>11</td><td>12</td><td>13</td></tr> <tr><td>14</td><td>15</td><td>16</td><td>17</td><td>18</td><td>19</td><td>20</td></tr> <tr><td>21</td><td>22</td><td>23</td><td>24</td><td>25</td><td>26</td><td>27</td></tr> <tr><td>28</td><td>29</td><td>30</td><td></td><td></td><td></td><td></td></tr> </table>	S	M	T	W	T	F	S	1	2	3	4	5	6		7	8	9	10	11	12	13	14	15	16	17	18	19	20	21	22	23	24	25	26	27	28	29	30					<div>JANUARY 2000</div> <table> <tr><td>S</td><td>M</td><td>T</td><td>W</td><td>T</td><td>F</td><td>S</td></tr> <tr><td></td><td></td><td></td><td></td><td></td><td></td><td>1</td></tr> <tr><td>2</td><td>3</td><td>4</td><td>5</td><td>6</td><td>7</td><td>8</td></tr> <tr><td>9</td><td>10</td><td>11</td><td>12</td><td>13</td><td>14</td><td>15</td></tr> <tr><td>16</td><td>17</td><td>18</td><td>19</td><td>20</td><td>21</td><td>22</td></tr> <tr><td>23</td><td>24</td><td>25</td><td>26</td><td>27</td><td>28</td><td>29</td></tr> <tr><td>30</td><td>31</td><td></td><td></td><td></td><td></td><td></td></tr> </table>	S	M	T	W	T	F	S							1	2	3	4	5	6	7	8	9	10	11	12	13	14	15	16	17	18	19	20	21	22	23	24	25	26	27	28	29	30	31							1 Planning & Zoning Board	2 Work Session	3 Gallery Walk Museum Open 6-9 pm	4 HANUKKAH S.H.A.R.E. Sign-Up Lions' Poinsettia Sale Optimist Flea Market BCYC Boat Parade
S	M	T	W	T	F	S																																																																																											
1	2	3	4	5	6																																																																																												
7	8	9	10	11	12	13																																																																																											
14	15	16	17	18	19	20																																																																																											
21	22	23	24	25	26	27																																																																																											
28	29	30																																																																																															
S	M	T	W	T	F	S																																																																																											
						1																																																																																											
2	3	4	5	6	7	8																																																																																											
9	10	11	12	13	14	15																																																																																											
16	17	18	19	20	21	22																																																																																											
23	24	25	26	27	28	29																																																																																											
30	31																																																																																																
5	6 Tree Lighting Clymer Park	7 PEARL HARBOR DAY Council Meeting	8 Bd. Of Adjustment	9	10 Lions' Carols by Candlelight	11																																																																																											
12	13	14	15	16 Work Session	17	18 S.H.A.R.E. Distribution Day																																																																																											
19	20	21 WINTER BEGINS Council Meeting	22	23	24 City Hall Closed	25 CHRISTMAS																																																																																											
26	27	28	29	30 Work Session	31 NEW YEAR'S EVE City Hall Closed	December																																																																																											

Clubs and Organizations

<u>LOCAL ORGANIZATIONS</u>	<u>MEETING DATES</u>	<u>MEETING LOCATIONS</u>	<u>CONTACT NUMBERS & ADDRESS & ZIP CODE</u>
ANDY ANDERSON POST #125	THIRD THURS 7 P M	AMERICAN LEGION HALL	347-6085, 6440 5TH AV So , 33707
ANDY ANDERSON POST #125 AUXILIARY	SECOND TUES 7 30 P M	AMERICAN LEGION HALL	347-6085, 6440 5TH AV So , 33707
BOCA CIEGA YACHT CLUB	THIRD FRI 8 P M	YACHT CLUB	32 -7295, 4600 TIFTON DR So , 33711
COAST GUARD AUXILIARY FLOTILLA 7- 6	FIRST & THIRD WED 7 30 P M	FLOTILLA BASE CLAM BAYOU PARK	321-4455, 821-2582, 3120 MIRIAM ST So , 33711
FAMILY COMMUNITY EDUCATORS	FIRST & THIRD THURS 30 P M	SENIOR CENTER	321- 454, 2521 1/2 52 ST So , 33707
FRIENDS OF THE GULFPORT PUBLIC LIBRARY, NC	FIRST TUES 2 30 P M JAN-APRIL/OCT-DEC	FRIEND'S ROOM LIBRARY	893-1074, 5501 28 AV So , 33707
GULFPORT AMERICAN WAR MOTHERS' CHAPTER 4	THIRD FRI 1 P M JAN-MAY/SEPT-DEC	SENIOR CENTER	343-528 , 5843 26 AV So , 33707
GULFPORT ARTS COUNCIL	SECOND MON 6 30 P M	SENIOR CENTER	321-8273, P O Box #5153, 33737
GULFPORT CHAMBER OF COMMERCE	MIXERS TO BE ANNOUNCED BOARD MEETINGS THIRD THURS 8 A.M	TO BE ANNOUNCED	327-2062, P O Box #5212, 33737
GULFPORT COMMUNITY CLUB	FIRST & THIRD SAT 2 NOON JAN-MAY/SEPT-DEC	SENIOR CENTER	323-7149, 2525 YORK ST So , 33707
GULFPORT COMMUNITY PLAYERS	TO BE ANNOUNCED	REHEARSAL HALL	321-4720 3050 BEACH BLVD , 33707
GULFPORT CRAFTS CLUB	MONDAYS 8 45 - 10 30 A.M	SENIOR CENTER	343-7114, 2308 56 ST So , 33707

GULFPORT GARDEN & BIRD CLUB	SECOND THURS 1 P M JAN-MAY/OCT-DEC	SENIOR CENTER (OR AS ANNOUNCED)	321-9029, 2614 BEACH BLVD So 33707
GULFPORT HISTORICAL SOCIETY	SECOND TUES 7 30 P M JAN-APRIL/SEPT-DEC	HISTORICAL MUSEUM	327-0505, P. O Box #5152, 33737 MUSEUM, 5301 28 AVE So , 33707
GULFPORT LIONS CLUB	SECOND & FOURTH TUES 7 P M	GULFPORT LIONS CENTER	321-5717, 4630 TIFTON DR So , 337 1
GULFPORT SOFTBALL BOOMERANGS	TUES THURS & SAT 8 30-11 A.M	HOYT FIELD	360-5075, 143 45 AV So ,SPBEACH, 33706
KEEP SOUTH PINELLAS BEAUTIFUL NC	FOURTH THURS 9 A.M	SO PASADENA CITY HALL	384-0701, 7015 SUNSET DR So , 33707
KNIGHTS OF COLUMBUS PIUS XII COUNCIL 513	SECOND & FOURTH THURS 8 P M	KNIGHTS OF COLUMBUS HALL	323-4745, 4914 17 Av So , 33707
LITTLE LEAGUE BASEBALL T-BALL/MINOR BALL MAJOR BALL/SENIOR BALL BIG LEAGUE BALL/SOFTBALL	MARCH-JUNE/SEPT-NOV AGES 5- 5 BOYS/GIRLS EX BOARD MEETING SECOND TUES 7 P M PARENTS INVITED	LITTLE LEAGUE FIELD AND HOYT FIELD	343-5145, 130 62 ST So ,ST PETE 33707
OPTIMIST CLUB	FIRST & THIRD TUES 7 P M	SENIOR CENTER #106	343-0310, P O Box #5098, 33737
SCOUTS BOYS GIRLS	WED 7 30 P M YEAR ROUND TUES - THURS 6 30 P M SCHOOL YEAR	SCOUT HALL SCOUT HALL	343-4398, 2625 58 ST So , 33707
SCOUTS - EXPLORERS FIRE EXPLORERS POLICE EXPLORERS	SUN 7 P M TO BE ANNOUNCED	FIRE STATION POLICE STATION	893-1062, 5314 23 Av So., 33707 893-1030, P O Box #5187, 33737
SENIOR CITIZEN'S CLUB	MON 1 45 P M JAN-MAY/OCT-DEC	SENIOR CENTER	343-4689, 5613 12 Av So , 33707
WOMAN'S CLUB OF GULFPORT GFWC & FFWC AFFILIATED	SECOND WED 12 NOON JAN-MAY/OCT-DEC	TOWN SHORES CLUB HOUSE	345-2324, 2506 PREMIER DR So 33707

COMPILED BY FRANCES PURDY

Places of Worship

Church of Christ
901 49th Street South
321-2721

Congregation Beth Shalom
1844 54th Street South
321-3380

First United Methodist Church
2728 53rd Street South
321-3620

Kingdom Hall of Jehovah's Witnesses
1219 53rd Street South
321-3862

Gulfport Open Bible Church
1710 52nd Street South
321-3513

Gulfport Presbyterian Church
5313 27th Avenue South
321-8086

Gulfport Church of the Nazarene
1000 55th Street South
321-1598

Most Holy Name of Jesus Parish
5806 15th Avenue South
347-7803

Notes

FROM

TO:



Gulfport
Historical
Society