



# KEYSTONE

HOME MOVIE EQUIPMENT

*For Color or Black and White*

*8<sup>mm</sup> and 16<sup>mm</sup>*





**K**EYSTONE MANUFACTURING COMPANY extends to you a most cordial invitation to make your headquarters at the Keystone Exhibit in the centrally located Hall of Communications, during the New York World's Fair of 1939.

One of the fields of modern scientific achievement which has registered a most remarkable advance is the development of modern photography. Amongst its many various branches, amateur motion pictures have established themselves as one of the essential contributions of contemporary science towards the shaping of today's social structure.

The progress of 8 MM and 16 MM Home Movies is perhaps one of the most remarkable attainments in the photographic industry. With a daily increasing number of purposes in the field of visual education in schools and institutions, for entertainment in homes and clubs, they have brought an abundance of hap-

# YOU ARE INVITED TO THE KEYSTONE EXHIBIT

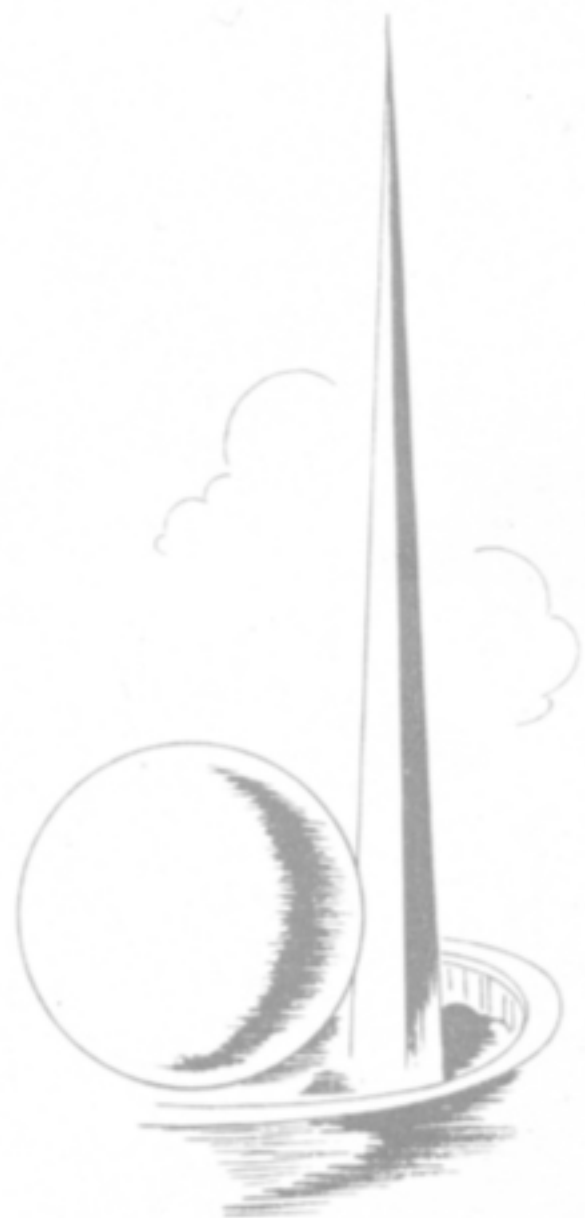
*at the World's Fair*

piness and new interests to thousands of people everywhere.

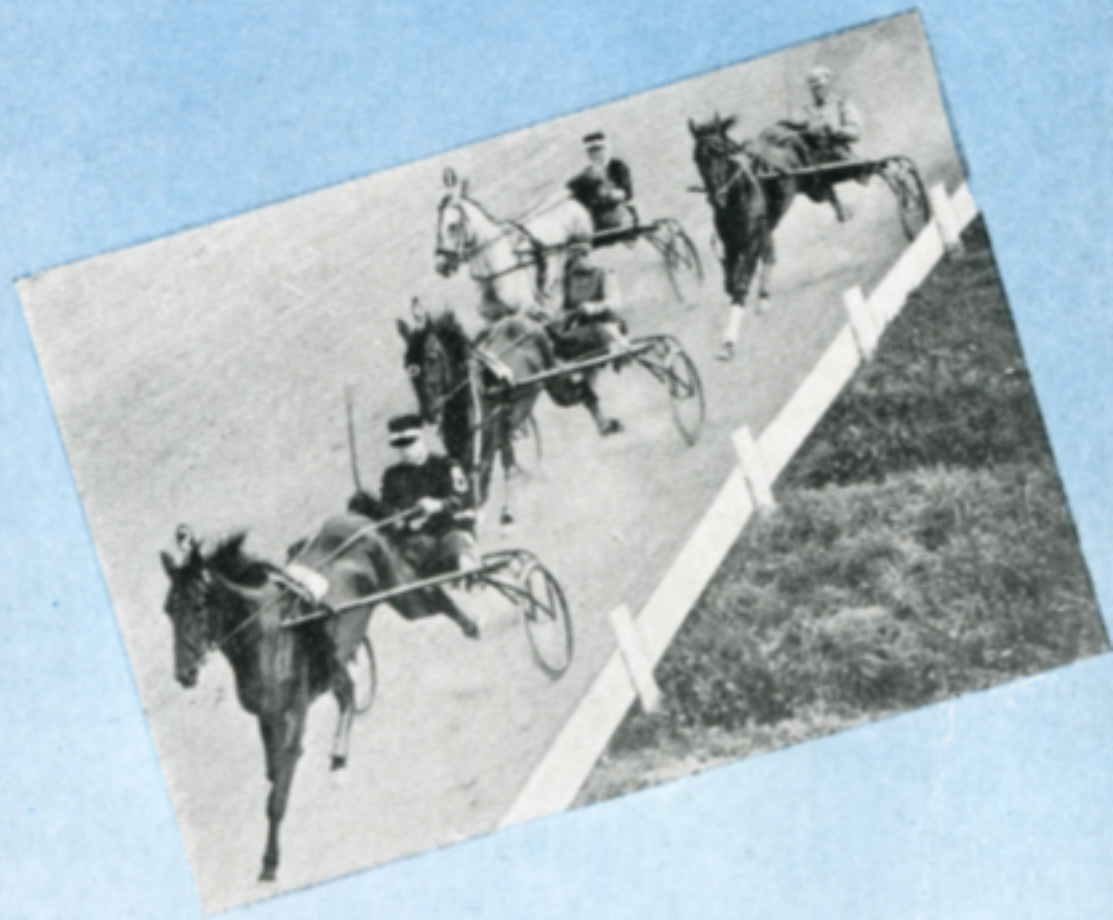
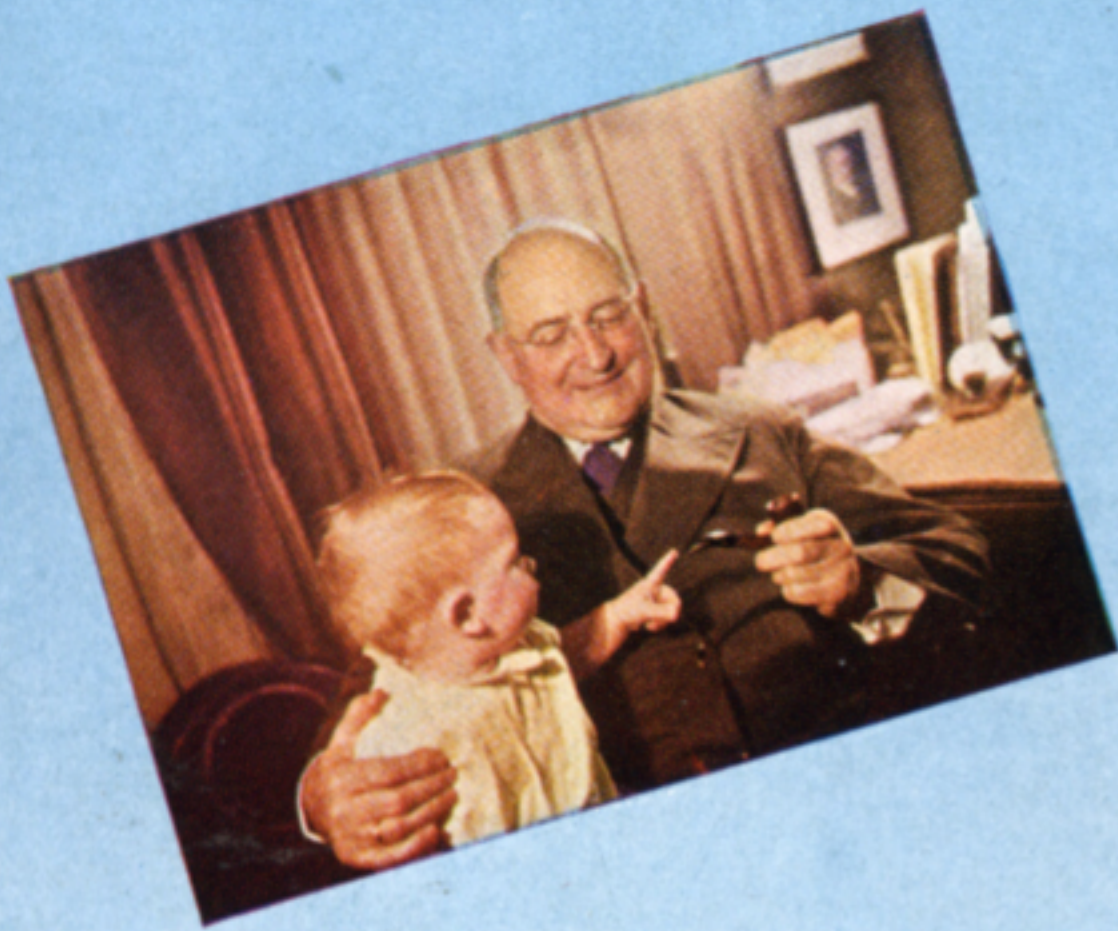
Keystone is one of the fastest growing lines of Home Movie Equipment, continually originating practical ideas in Cameras and Projectors. It offers a product which at reasonable prices represents a high standard of quality and the latest developments in substandard motion pictures, thus satisfying a demand on the part of the great general public.

In line with the progress of modern photography Keystone engineers endeavor to bring within popular reach the newest features and refinements, otherwise to be found only in products of a much higher range of price.

A visit to the Keystone Exhibit at the World's Fair will disclose to both consumer and dealer the wide range of exceptional values offered by our firm in precision craftsmanship and should represent a source of lasting interest to every visitor.







## *Some Pictures Are Priceless*

Keep a living action record of family scenes and other memorable events for future enjoyment. Remember — today never repeats itself!





## *In Full Color or in Black and White*

**ANY TIME**, anywhere, a precision Movie Camera to slip into your coat pocket, ready to take pictures at your liking — day or night, indoors or outdoors — with Keystone quality accessories available to suit your particular purposes.

The importance of 8 mm and 16 mm amateur motion pictures as a medium of entertainment in homes, clubs and institutions and as factor of steadily growing value for visual education, industrial purposes and many other instances, is known to every one of us.

For best projection results Keystone projectors will be found most satisfactory and easy to handle; sturdily built, made with precision workmanship. Here too a complete line of accessories will satisfy your wishes for extra thrills.

On the following pages of this catalog we endeavor to tell why you should preferably buy Keystone Home Movie Equipment. It will be worth your while to carefully read about the amazing features of the various Keystone models in this booklet.

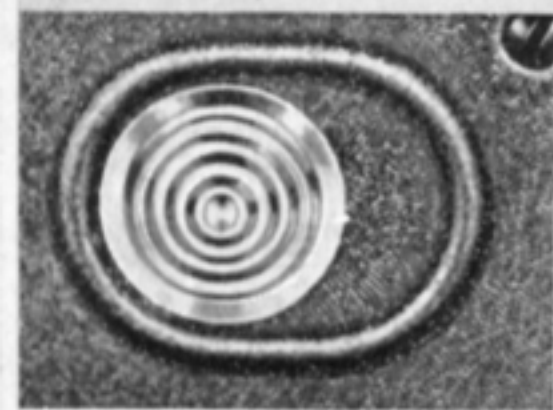
Any Keystone dealer in your vicinity will be only too glad to give you a full demonstration and show you Keystone equipment in action. If there is any particular information you might desire, do not hesitate to communicate with your dealer or write to us.





*Three Speeds . . . SLOW MOTION . . . FILM ECONOMY . . .*  
**INTERCHANGEABLE LENSES . . . VISIBLE and AUDIBLE FOOTAGE INDICATOR**

**C**OLOR PICTURES are easily made with the Model "K-8" Camera. It is equipped with standard lens mount, interchangeable for Wollensak Universal Anastigmat f.3.5, f.2.7, f.1.9 and 1½" Telephoto lens. A footage indicator, built-in view finder and additional outside long range view finder for landscape or telephoto pictures will open new fields of movie taking to the amateur. With detachable leather wrist strap, light in weight, the "K-8" Camera is small enough to carry in your coat pocket. It is very easy to thread and operate.



**LOCKING DEVICE**



**VISIBLE and AUDIBLE  
FOOTAGE INDICATOR**



**EXPOSURE  
PUSH BUTTON**



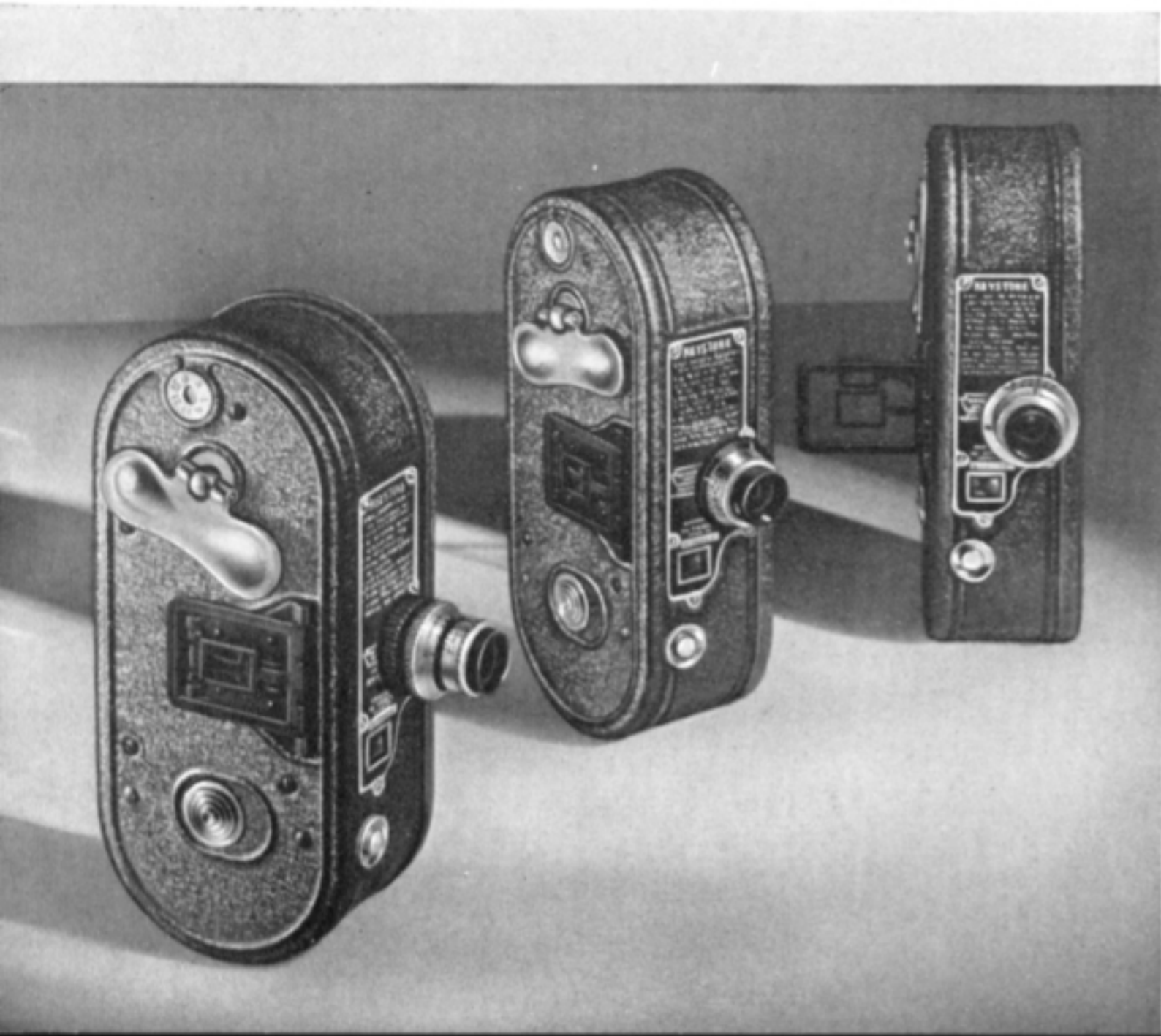
**ADJUSTABLE SPEEDS  
WITH SLOW MOTION**



*To Fit into the Palm of Your Hand*

## THE KEYSTONE 8 MM CAMERA

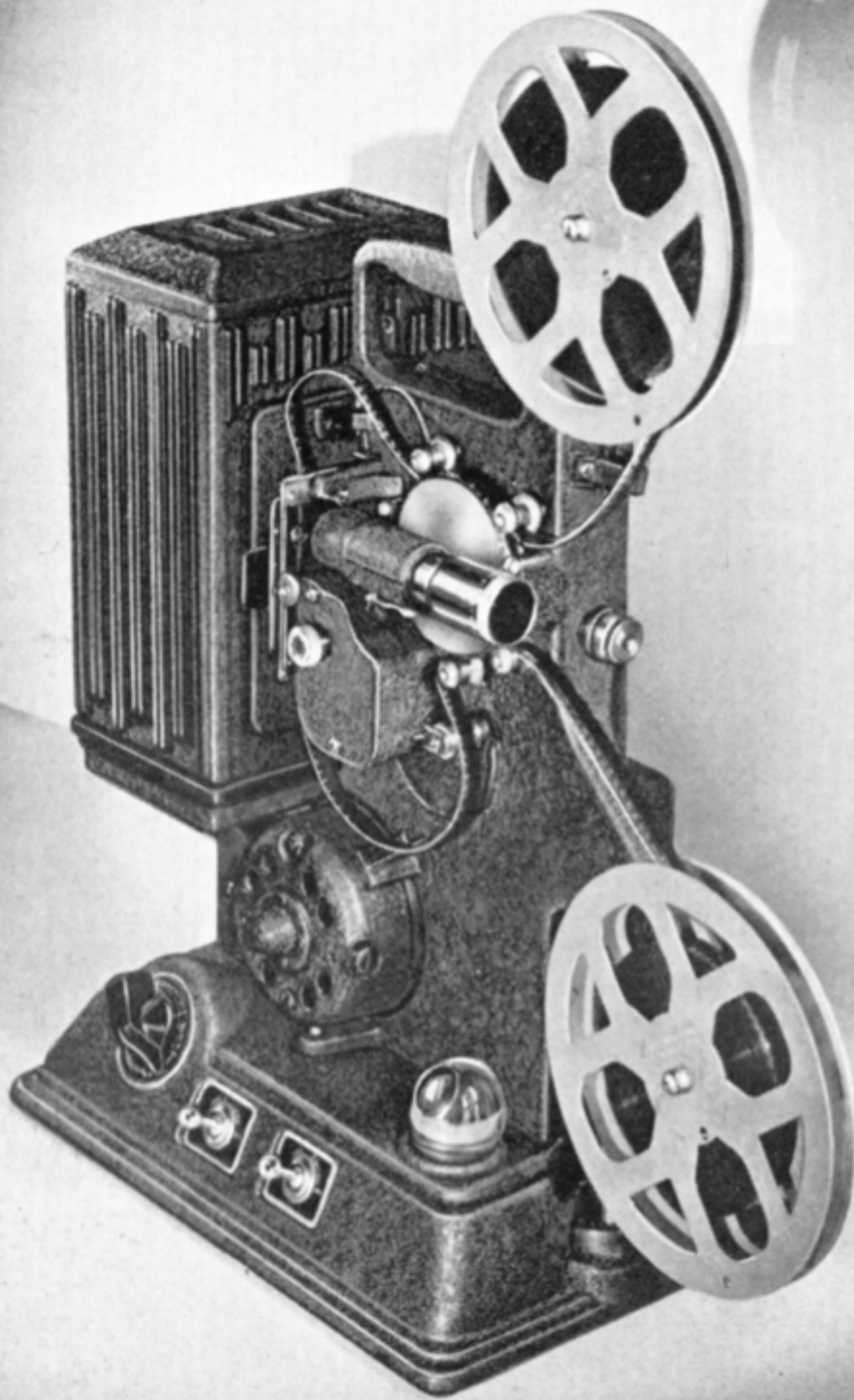
- **M**ORE FEATURES than you will find in other cameras selling for almost twice its cost.
- The Keystone Model "K-8" Camera will perform with utmost ease, economy and precision of operation, giving you slow motion, normal and fast speed action, 12-16-48 frames per second, at a shutter speed of 1/40th per second (at normal speed of 16 frames per second).
- The Keystone "K-8" Camera will give you the economical feature of using the single width 30-foot 8 MM Agfa film, enabling you to send the film for development after the 30 feet have been used — eliminating the waiting time originally required when using a standard roll of "double eight" film. Of course, the Keystone "K-8" Camera also takes the Eastman "double eight" Kodachrome color or standard black and white film.
- The audible signal feature will enable you to know just how many feet are being taken while the motor is in operation by listening to the click of the footage indicator as you look through the view finder.
- Keystone "K-8" is constructed to enable you to take your picture with your own camera by using the locking device. For instant operation the push button release will facilitate handling the camera for regular shots.



*All Cameras are fully  
guaranteed and indi-  
vidually registered  
with Serial numbers.*







For

*Color*

or

BLACK and WHITE!

500 WATT

*Model*

R-8

PROJECTOR

## *Model R-8* — 500 WATT — 8 MM PROJECTOR

**T**RULY one of the most amazing values in the market in comparison to many projectors sold for almost twice its cost. Perfect for color pictures, with fully achromatic f.1.85 Projection Lens, 1" Focus, it has a 400-foot capacity. Constructed in a sturdy cast frame, its powerful draft ventilation assures a continuously cool performance.

Check the following features: Adjustable Tilt, to adjust projection angle — Separate Switches, for lamp and motor — Manual Framer — Pilot Light — Electric Motor Rewind — Polished Reflector — Speed Control — Built-in Carrying Handle — 500 Watt Projection Lamp, G. E. — Fan Cooled Ventilation — Cast Base and Frame — Roller Guides for Easy Threading — Universal Motor, 115 Volts A.C. - D.C. — Equipped with 200-foot Spool (the spool arms are designed for 400-foot capacity). Carries full factory guarantee for one year.

**THE PERFECT EQUIPMENT FOR "8 MM" FULL COLOR MOVIES**



# *Model M-8*—300 WATT—8 MM PROJECTOR

**LOWER** in price, it offers fundamentally the same advantages as the Model R-8 with a few features eliminated in order to bring it within the reach of the buyer who wishes to spend less for his projector, yet wants to obtain a precision projector for his 8 mm black and white or full color movies.

300-Watt Projection Lamp, G.E.—Projection Lens, Full Achromatic, 1" Focus—Adjustable Tilt—Electric Motor Rewind—Manual Framer—Clear, Steady, Brilliant Pictures—Sturdy Construction—Cast Base and Frame—Roller Guides for Easy Threading—Polished Reflector—Forced Draft Ventilation—Speed Control—Full Factory Guarantee—Universal Motor, 115 Volts, A.C.-D.C. Equipped with 200-foot Spool, the spool arms designed for 400-foot capacity.

300 WATT

*Model*

**M-8**

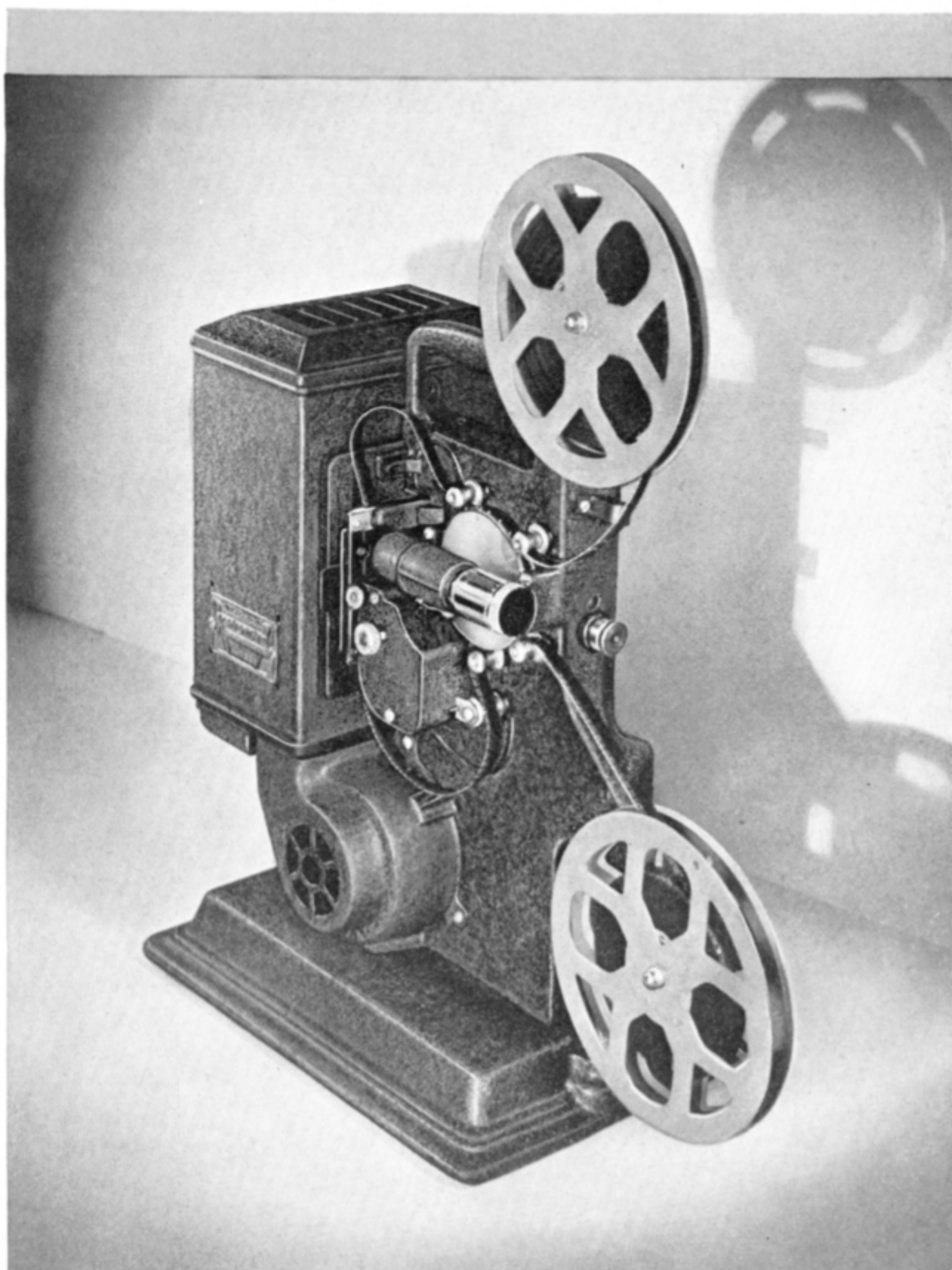
PROJECTOR

For

*Color*

or

**BLACK and WHITE!**







## *In Homes, Schools and Churches*

**T**HE "A-81" recommends itself for educational purposes. With its still picture feature for the momentary stop of single frames and its reverse picture feature, making it possible to repeat scenes at wish or for creating surprisingly humorous effects, this projector will permit any desired kind of performance.

When you buy a projector for capacity use—the features assuring you of continuous satisfaction and flawless operation will indeed represent a very important factor in your selection. The Model "A-81" incorporates all the refinements of modern projection technique applicable to 16 mm construction. Despite its astonishingly low cost it has no equal anywhere within its price range in finish as well as in technical details.

The "Keystone" A-81 — 750-watt Projector will give utmost satisfaction and meet all adequate requirements.



TILTING DEVICE



REMOVABLE FILMGATE  
FOR CLEANING

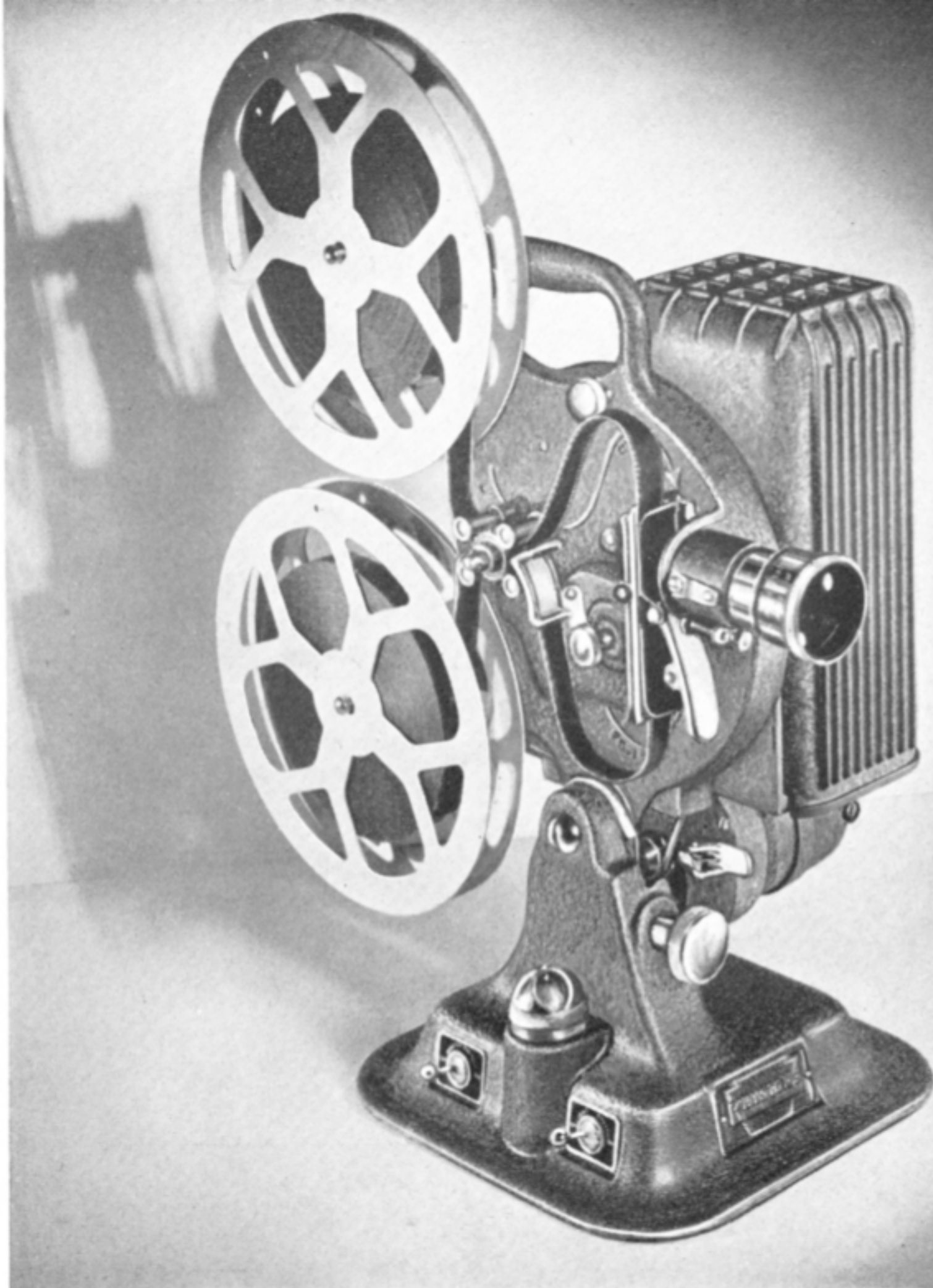


STILL PICTURE FEATURE



*Perfect*  
for  
*Color*

or  
BLACK and WHITE!

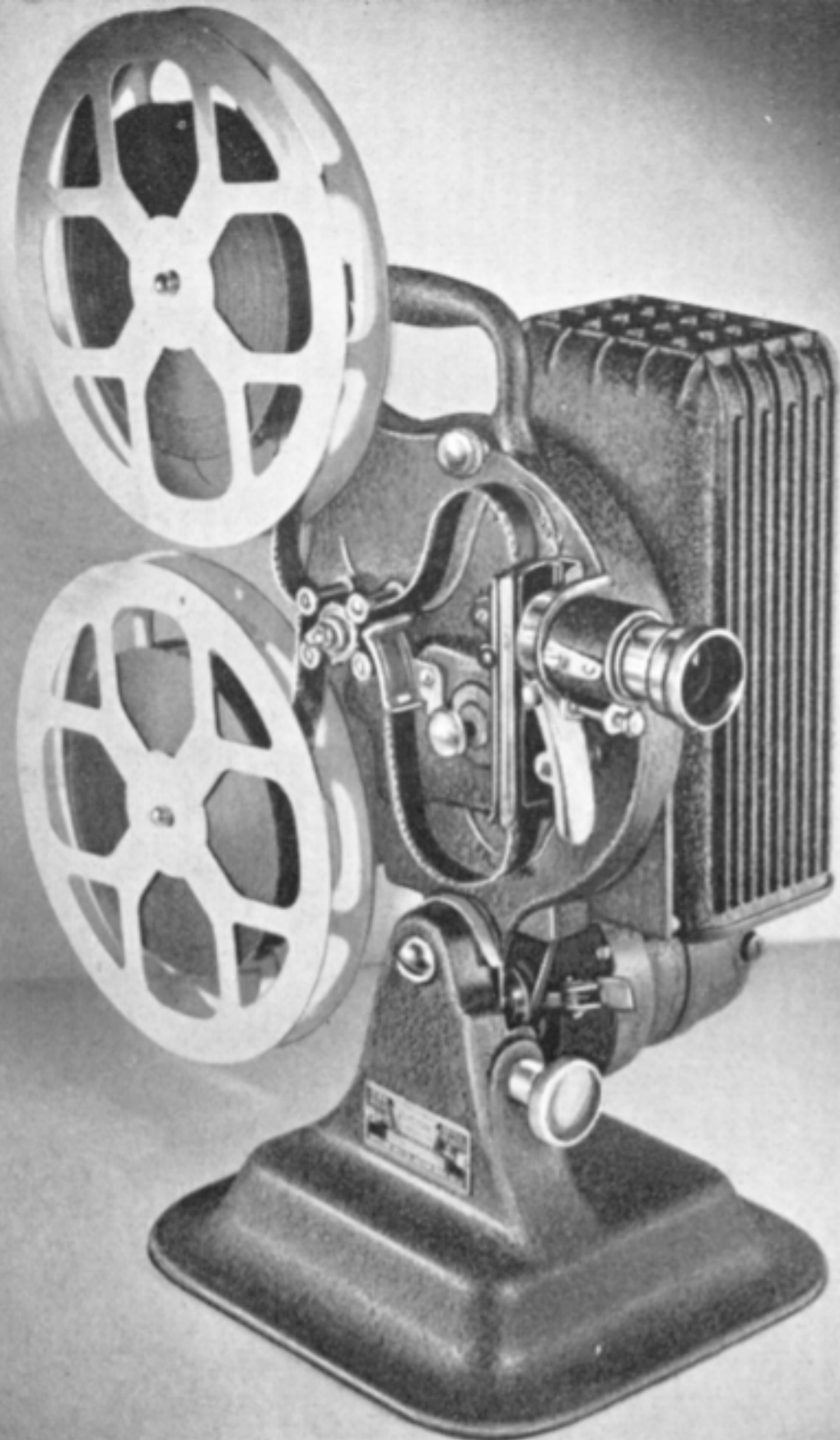


## MODEL A-81—750 WATT PROJECTOR

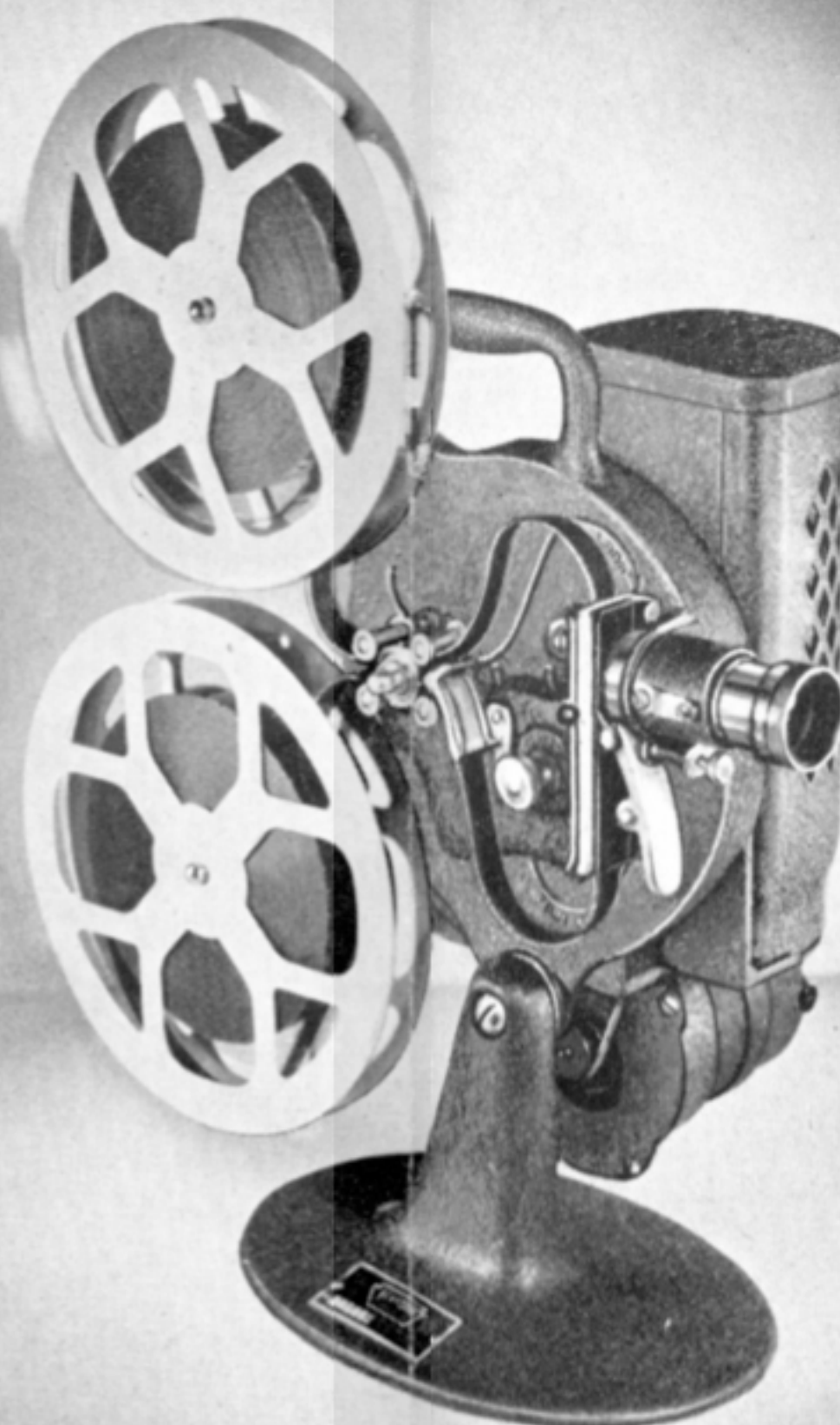
*Evenly Bright Projection Field • Still Feature • Reverse Pictures*

- **C**ENTRAL control of electrical operations, manual framer, hand setting knob moving film one frame at a time. Wide angle tilting device.
- **B**EAUTIFULLY executed die cast construction, quiet and dependable operation, forced draft cooling system, rapid rewind, cast-in carrying handle.
- **P**ICTURES up to 14 feet in width at a distance of 75 feet with standard equipment, full achromatic 2" lens. (Other interchangeable lenses for specific requirements available.)
- **S**PEED adjustments permitting precise regulation of current feeding the motor, exact control of speed.
- **W**OLLENSAK Auditorium Projection lens f.1.65, assuring steady flickerless and sharply focused pictures. 750-watt illumination offering rich uniform brilliancy, making presentations even in large halls and auditoriums thoroughly dependable.





MODEL A-75 — 500 WATT



MODEL A-72 — 300 WATT

## Quality Performance

- EFFICIENCY
- EASE OF OPERATION

distinguish the other three members of the Keystone 16 MM Projector family.

Designed to bring within the reach of every pocketbook the utmost satisfaction in Projection results, their features guarantee marvelous pictures IN COLOR or BLACK AND WHITE.

Even the inexperienced operator will be able to handle any of these projectors most easily and show a bright clear and flickerless picture at distances suitable for the average size small auditorium or home.

There are special carrying cases and a selection of interchangeable projection lenses available to suit individual needs.

## Keystone 16 MM PROJECTORS (continued)

### Model A-75 — 500 WATT

Equipped with 500 watt special concentrated filament pre-focus projection lamp. A 750 watt lamp can be used. A ventilating fan is connected with the motor which forces cool air through lamphouse. UNIVERSAL MOTOR DRIVE:—For direct current or alternating current (special rheostat for controlling speed). LENS:—f.2.5, finely ground and polished, 2" achromatic. STILL PICTURE FEATURE:—For the momentary stop of single frames. CONSTRUCTION:—Die cast. Baked brown wrinkle enamel finish. MANUAL FRAMER. CAPACITY:—400-foot, one empty aluminum spool furnished. SIMPLE THREADING:—Special aperture plate and lever controlled by one finger. PRECISION MOTION MOVEMENT:—By two claw movement with grip on two sprocket holes. ANGLE PROJECTION:—By turning a knob on the base any angle can be obtained. SIZE OF PICTURE:—Up to 40" x 52" at a distance of about 24 feet. REWIND MECHANISM:—High-speed re-wind with motor. OILING SYSTEM:—At all important friction points.

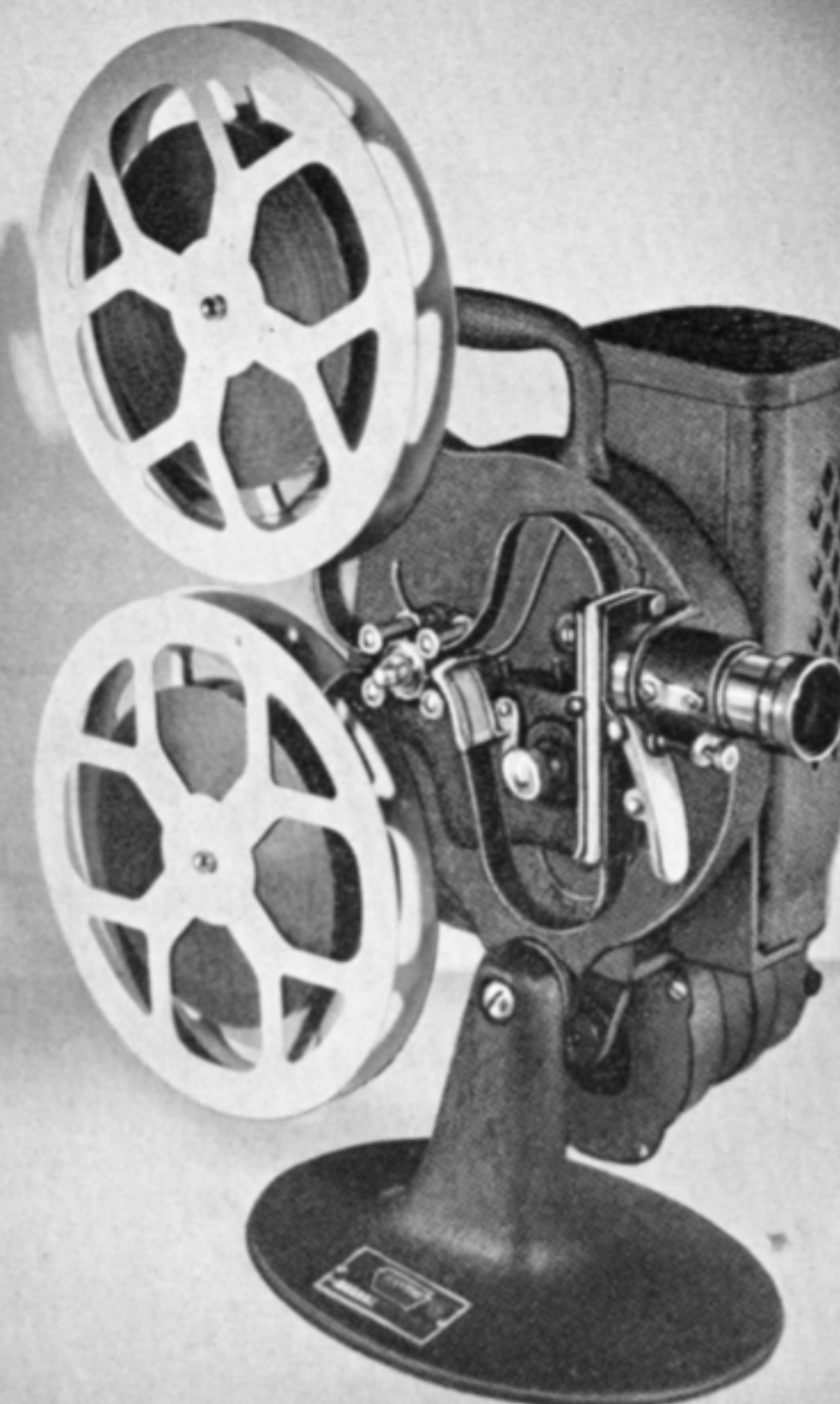
### Model A-72 — 300 WATT

ILLUMINATION:—300 watt special concentrated filament pre-focus projection lamp. A 500 watt lamp can be used if desired. UNIVERSAL MOTOR DRIVE:—For direct or alternating current (special rheostat for controlling speed). VENTILATION:—Has strong ventilating fan attached to motor. LENS:—f.2.5, finely ground and polished, 2" achromatic. CONSTRUCTION:—Cast aluminum alloy main body construction with cast base. Baked wrinkle enamel finish. FRAMER:—Manual framer. CAPACITY:—400-foot, one empty aluminum spool furnished. SIMPLE THREADING:—Special aperture plate and lever controlled by one finger. PRECISION MOTION MOVEMENT:—By two claw movement with grip on two sprocket holes. ANGLE PROJECTION:—By a swivel between base and body. SIZE OF PICTURE:—Up to 40" x 52" at a distance of about 24 feet. REWIND MECHANISM:—High-speed electric rewind.

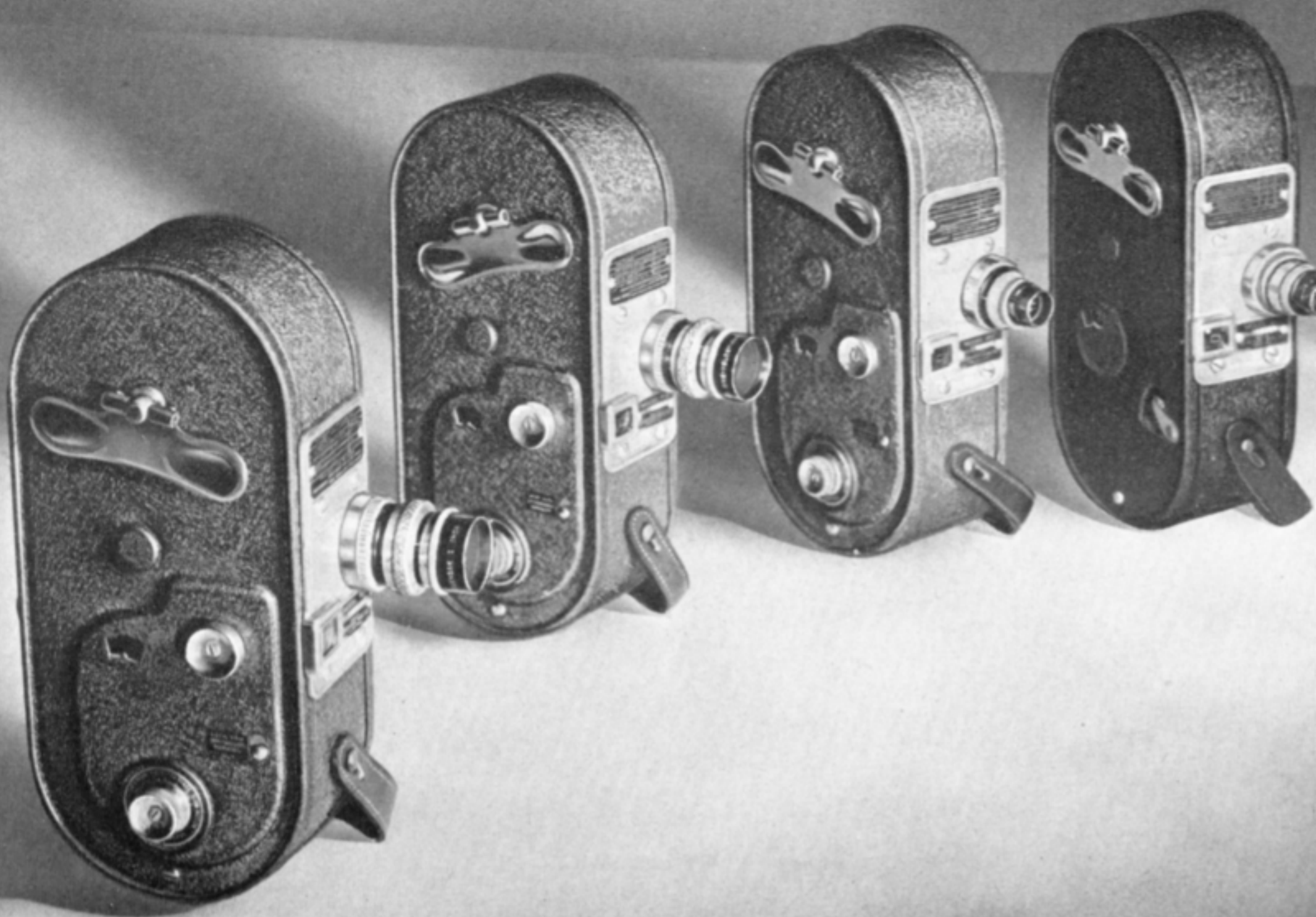
### Model D-64 — 200 WATT

CONSTRUCTION:—Cast aluminum alloy main body construction with cast base to decrease vibration. Baked wrinkle enamel finish. FRAMER:—Manual framer. CAPACITY:—400-foot, one empty aluminum spool furnished. ANGLE PROJECTION:—By a swivel between base and body. SIZE OF PICTURE:—Up to 40" x 52" at a distance of about 24 feet. ILLUMINATION:—200 watt special concentrated filament pre-focus projection lamp. A 300 watt lamp can be used. UNIVERSAL MOTOR DRIVE:—For direct or alternating current (special rheostat for controlling speed). VENTILATION: Has strong ventilating fan attached to motor. LENS:—f.2.5, finely ground and polished, 2 1/4" focus.

MODEL  
D-64  
200  
Watt







Model A-7, F.1.5

Model A-3, F.1.5

Model A-3, F.3.5

Model B-1, F.3.5

## *Keystone 16 mm Movie Camera*

### **HIGH QUALITY . . . LOW INITIAL COST**

are the most significant characteristics of the assortment of 16 MM Keystone Multi-Speed Cameras. Here, too, Keystone engineers have created a product which represents the solution to many problems movie amateurs had to face until quite recently, when considering the use of 16 mm camera equipment.

The prices of these quality cameras of 100-ft. 16 mm film capacity are remarkably reasonable and Keystone's foremost construction principles: **QUALITY—SIMPLICITY—LOW COST** find their vivid expression in this particular line.

Three different models with interchangeable optics — f.3.5, f.2.7, f.1.5, and speeds from 10 to 64 frames per second (shutter speed of 1/36th of a second at normal speed of 16 frames per second) will enable even the unskilled amateur to obtain perfect results with his Keystone 16 MM Camera.

There is also complete assortment of accessories available to satisfy the specific demands for various problems.



# *Features of the* **KEYSTONE 16 MM CAMERA**

**WOLLENSAK LENS** — Universal focus and focusing mount lenses with adjustable mechanical Iris.

**DAYLIGHT LOADING** — Camera may be loaded in broad daylight.

**SPEEDS** — from 10 to 64 frames per second according to model.

**INTERCHANGEABLE LENS MOUNT** — to fit any type lens.

**EXPOSURE CHART** — showing how to adjust lens to various light conditions.

**VISUAL FOOTAGE INDICATOR** — showing exact length of exposed film.

**AUDIBLE FOOTAGE INDICATOR** — (patented) to determine footage as taken.

**CARRYING HANDLE** — strengthening grip on Camera to assure steady pictures.

**MONOCULAR VIEWFINDER** — built right into Camera.

**EASY WINDING** — winds like a clock.

**SPRING MOTOR** — to withstand severe use.

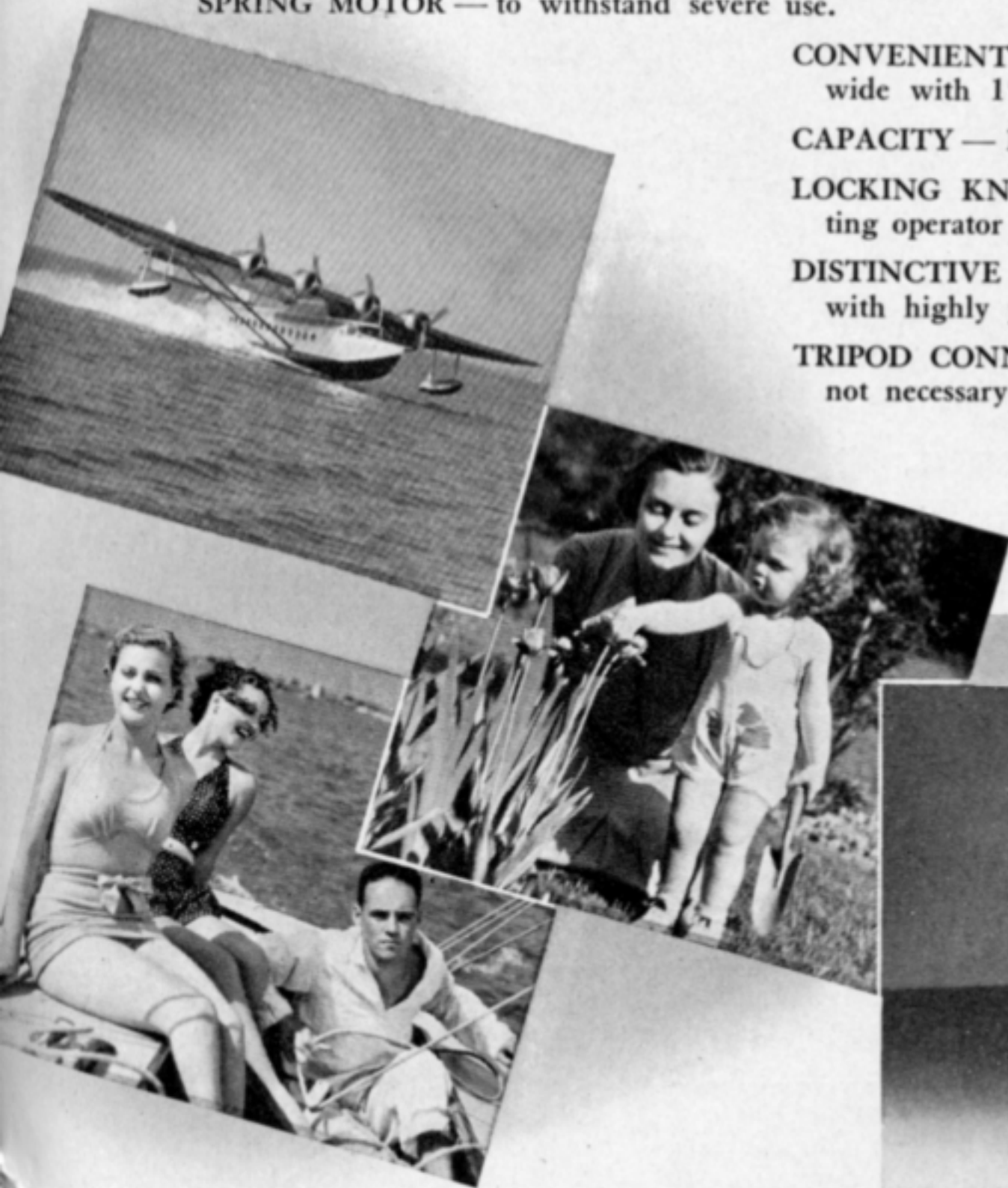
**CONVENIENT SIZE** — 2 $\frac{3}{4}$ " thick x 9" long x 4" wide with 1" lens extension.

**CAPACITY** — 100-foot or 50-foot 16 mm film.

**LOCKING KNOB** — can be locked into place permitting operator to step into scene and take own picture.

**DISTINCTIVE FINISH** — attractive wrinkle enamel with highly polished chrome trimming.

**TRIPOD CONNECTION** — provided for, but tripod is not necessary to obtain steady picture.



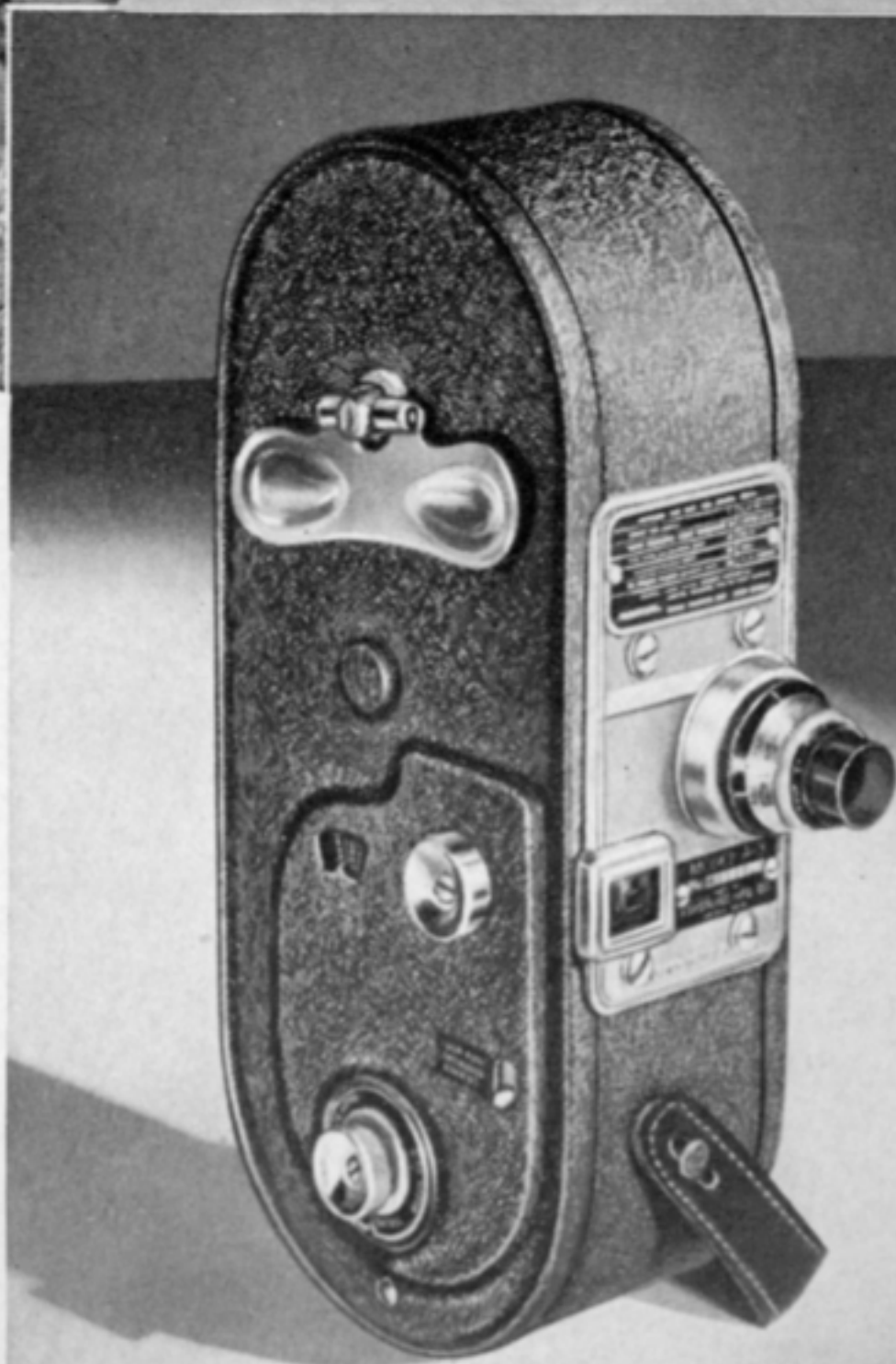
Model A-7 — with F.1.5 Lens, seven speeds.

Model A-7 — with F.2.7 Lens, seven speeds.

Model A-3 — with F.1.5 Lens, three speeds.

Model A-3 — with F.3.5 Lens, three speeds.

Model B-1 — with special F.3.5 Lens, one speed, no locking device, no audible footage signal.







## *Camera Lenses* (See Index)

### WOLLENSAK CINE-VELOSTIGMAT LENSES

Lens speed is not only essential but imperative, if the Maximum is expected in movie photography. The ultra-rapid speed of f.1.5 or f.1.9 permits pictures to be made under various lighting situations — evening scenes, or interiors. The Cine-Velostigmat f.1.5 or f.1.9 possesses the finest optical corrections possible, which adapt superbly to color work. Both the diaphragm and distance markings are set from one indicator which permits quick and positive setting. A telephoto lens on your movie camera gives the effect that a telescope renders to the human eye. It magnifies, brings in the distance and permits close-ups to be made of nearby or far off objects.

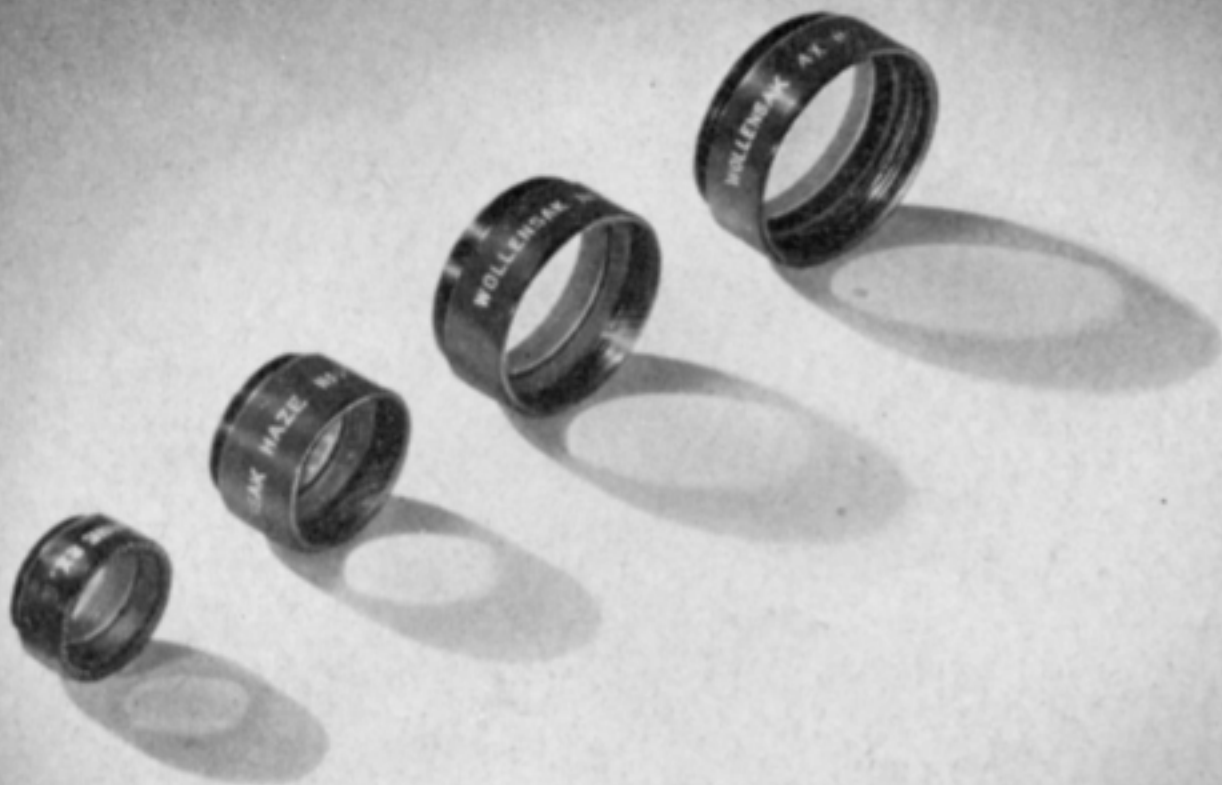
## *Light Filters* (See Index)

Light filters are very important accessories to the camera operator who desires real beauty in his films. They increase the contrast and reproduce colors in their true tonal relation to each other. Yellow filters are used to increase the contrast and will give the effect of snowy white clouds in a deep blue sky. They also help to penetrate the haze encountered in distant mountain scenes.

The red filter retains blue light, thus giving a deeper tone to all blue areas in the picture, making sky and water very dark with light objects brilliantly bright.

Kodachrome haze filter, neutral density filter and green filters will all convey special purposes in obtaining the finest possible details in pictures.

There are filters available for use with Type A Kodachrome Film on outdoor pictures and Blue Filters for Regular Kodachrome Film when taking indoor pictures with Photo Flood lamps.





# Projection Lenses

(See Index)

Very often one desires to show a certain size picture using the projector at a fixed distance from the screen. For this purpose, a lens with the proper focal length must be used. A short focal length lens will increase the area of the picture on the screen but will reduce the intensity of the illumination to some extent.



# Projection Lamps

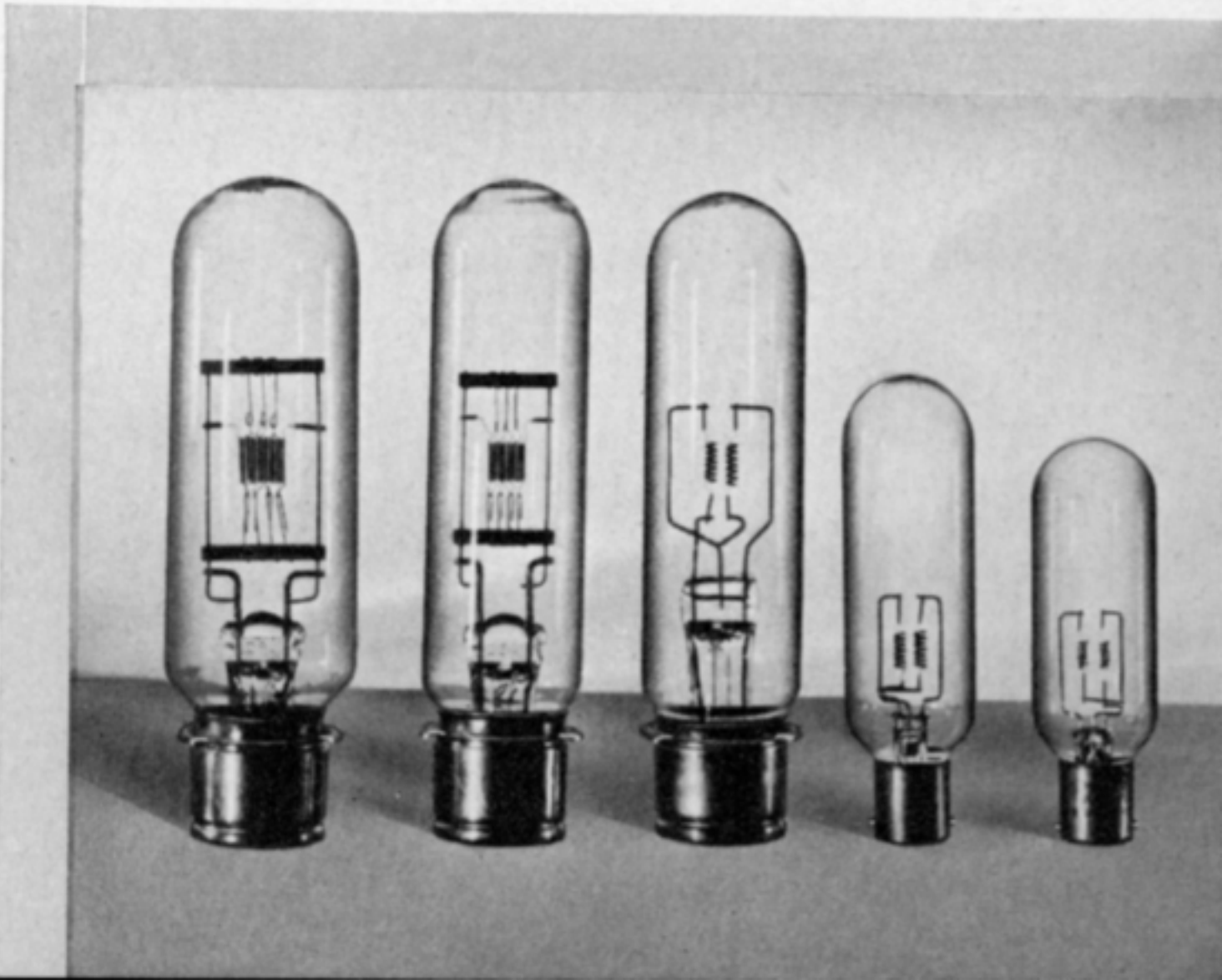
The projection lamp has a special base for locating the lamp filament in the proper relation to the condensor. Some lamps are rated with an average life of 25 hours which, however, means that some lamps will burn 30 hours while other lamps might burn out within 20 hours.

Model	Type Bulb	Type Base	Watts	Average Rated Life
D 62	T-10	Medium Prefocus	200	50 hrs.
D 64	T-10	Medium Prefocus	200 or 300	50 hrs. 25 hrs.
A 72	T-10	Medium Prefocus	300 or 500	25 hrs.
A 75	T-10	Medium Prefocus	500 or 750	25 hrs.
A 81	T-12	Medium Prefocus	750 or less	25 hrs.
L 8 R 8	T-10	Medium Prefocus	500 or less	25 hrs.
G 8 J-8, M 8	T- 8 T-8½	S. C. Bayonet Candelabra	200 or 300	25 hrs.

PICTURE SIZES OBTAINED WITH PROJECTION LENSES

Focal Length of Lens in Inches		DISTANCE IN FEET FROM SCREEN												
		8	10	12	16	20	25	32	36	40	45	50	64	75
8 m. m.	16 m. m.	WIDTH OF PICTURE												
	1	3'0"	3'9"	4'6"	6'0"	7'6"	9'4"	11'11"	13'5"	14'11"				
¾	1½	2'0"	2'6"	3'0"	4'0"	5'0"	6'3"	8'0"	9'0"	10'0"	11'3"	12'6"		
1	2	1'6"	1'10"	2'3"	3'0"	3'9"	4'8"	6'0"	6'9"	7'5"	8'5"	9'4"	11'11"	14'0"
1½	3		1'3"	1'6"	2'0"	2'6"	3'1"	4'0"	4'6"	5'0"	5'7"	6'3"	8'0"	9'0"
	3½		1'0"	1'3"	1'8"	2'1"	2'8"	3'5"	3'10"	4'3"	4'9"	5'4"	6'11"	8'0"
	4			1'1"	1'6"	1'10"	2'4"	3'0"	3'3"	3'9"	4'2"	4'8"	6'0"	7'0"

8 m.m. sizes within black border.





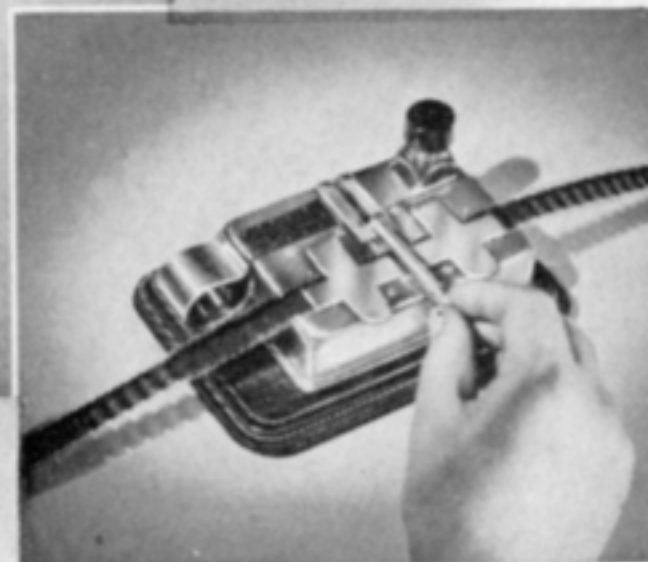
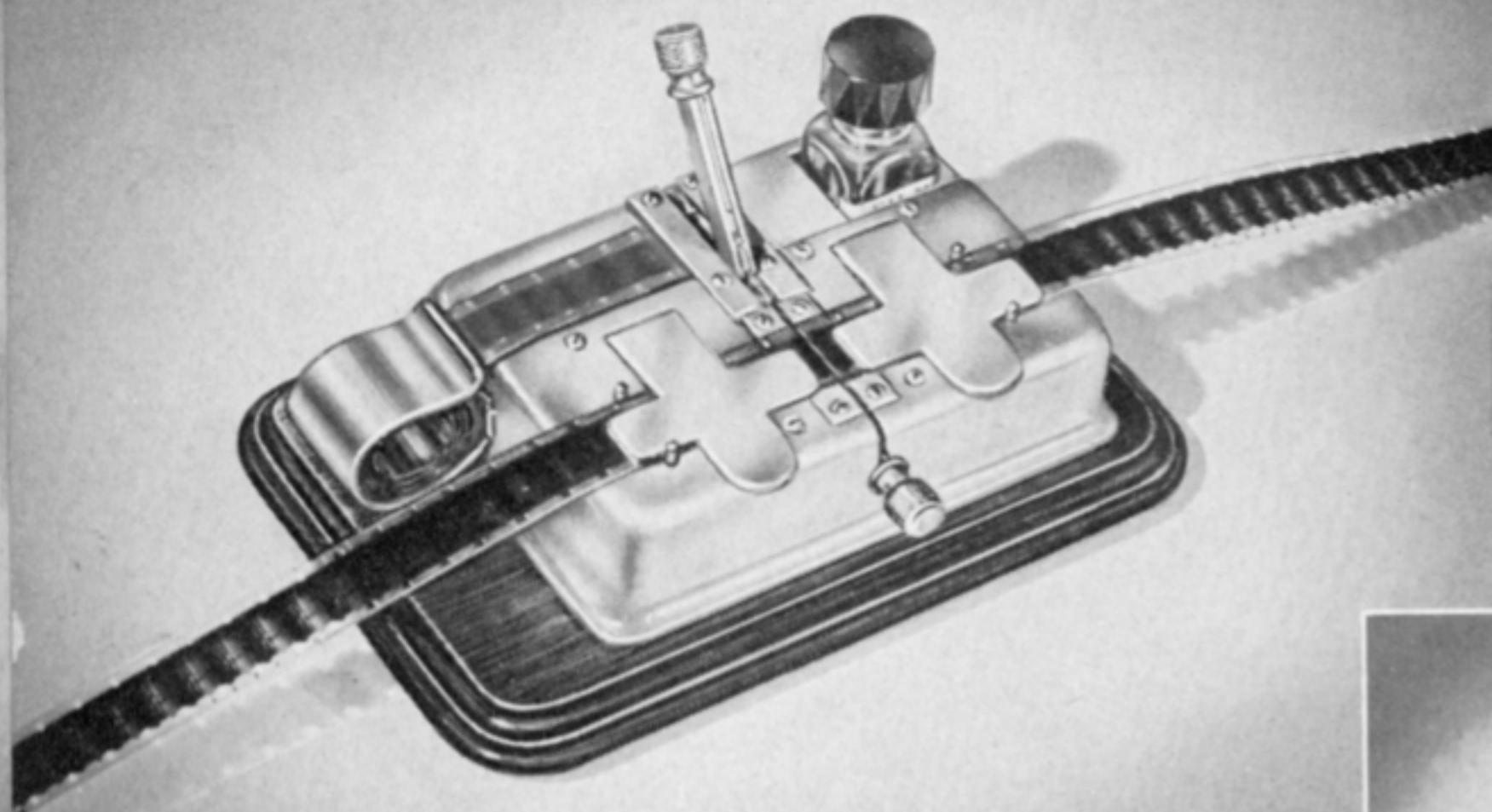
MODEL No. 83

FOR 8 MM FILM

MODEL No. 73

FOR 16 MM SILENT

and SOUND FILM



## *Keystone De Luxe Splicer*

**MAKES PATCH SPLICE — NO SCRAPING — NO WATER!**

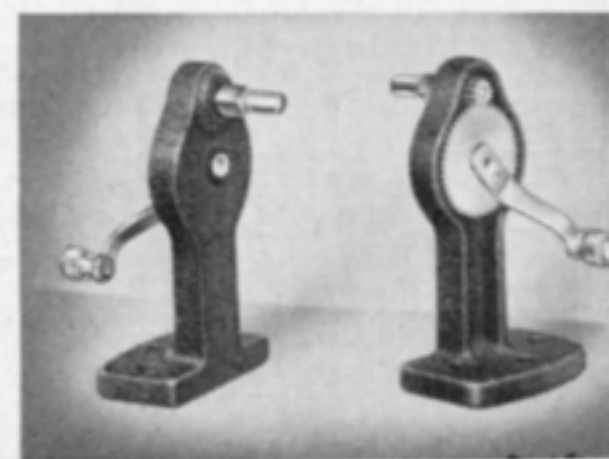
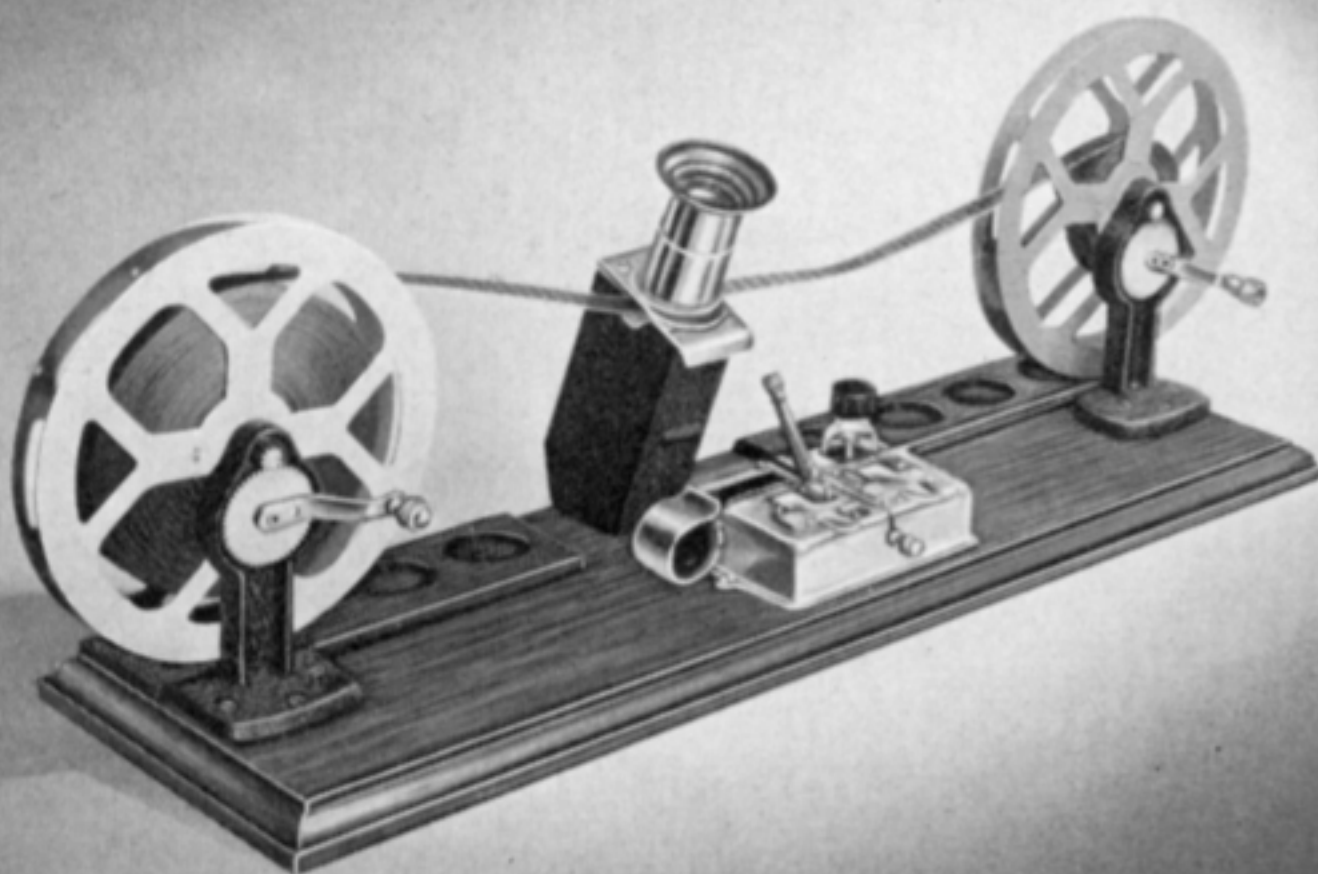
A precision splicer designed to give accurate splices with a minimum of time or effort. The patch is applied to the celluloid side of the film, eliminating scraping of emulsion, thus obtaining a cleaner and stronger splice.

The unit is ideal for repairing torn sprocket holes without cutting the film — light in weight, extremely compact, with no detached or loose parts to handle.

It is designed for simplicity, ease and speed of operation. For 8 MM Silent or 16 MM Silent and Sound Film.

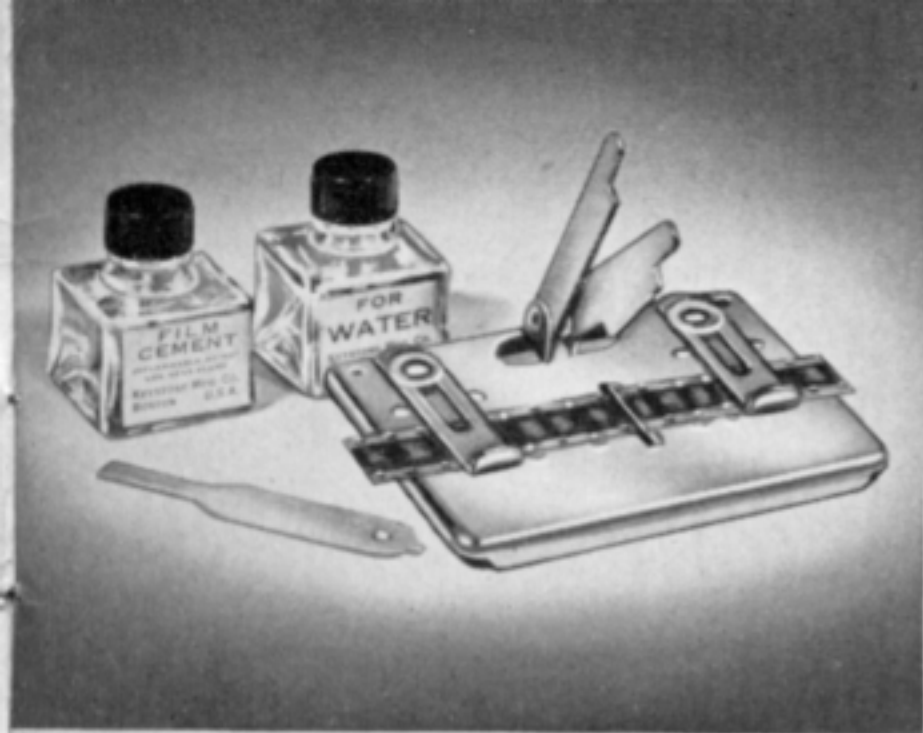
## *New Illuminated Editor and De Luxe Splicer* See Index

A rewinder, picture viewer and De Luxe Splicer unit, mounted on a highly finished wooden base. The geared rewinder reel supports are castings with chrome plated fittings. The splicer is of the deluxe type, a precision instrument, designed to give the best results using no water and, with scraping unnecessary, can be used with either silent or sound films (16 mm). The picture viewer is supported over the splicer, amply high to give generous room for making splices. Electric light unit is directly below the viewer. For 8 MM Silent or 16 MM Silent and Sound Film.



No. 748  
GEAR REWIND BRACKETS  
(Set of Two)





**MODEL No. 734  
KEYSTONE SPLICING OUTFIT**

Popular priced. Conveniently carried with your Projector.

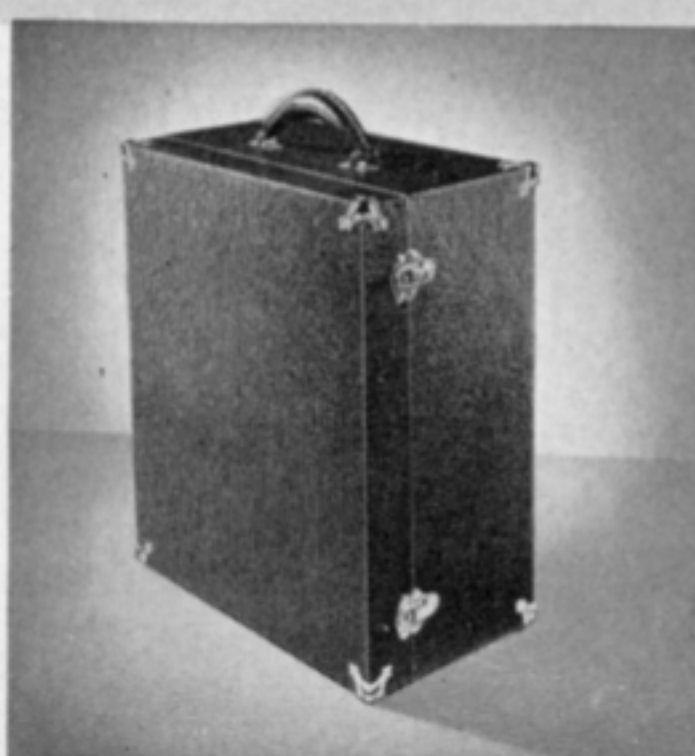
**PHOTOLIGHT UNITS**

Portable and clamp-on models. An indispensable help for satisfactory indoor pictures. Designed to produce the maximum amount of so uniform light.



**KEYSTONE CAMERA  
CARRYING CASE**

Genuine leather, adjustable straps, for hand or shoulder.



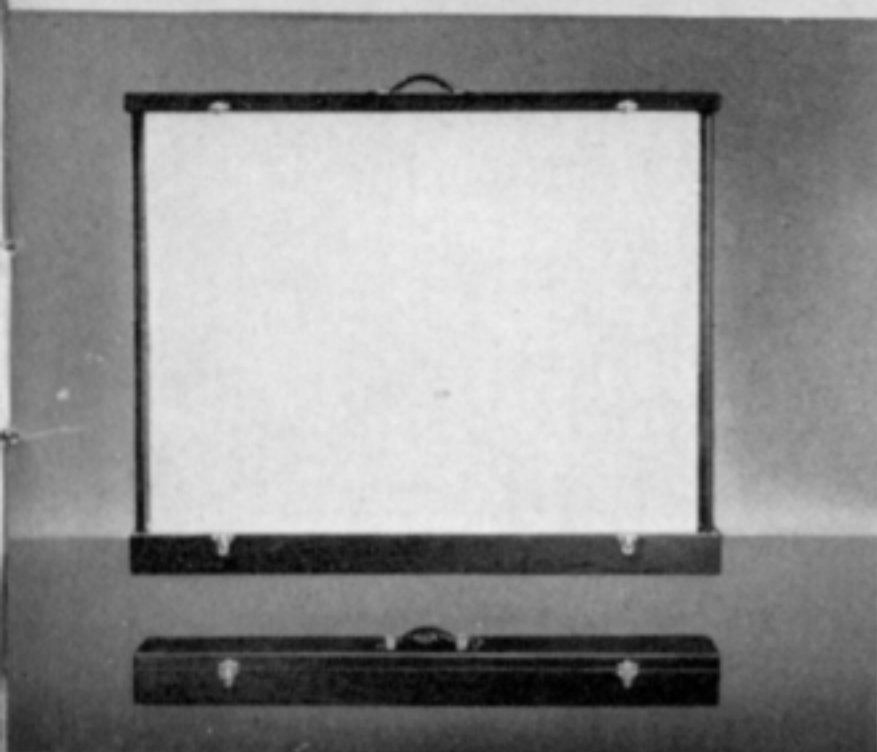
**KEYSTONE PROJECTOR  
CARRYING CASE**

Attractively covered, brightly trimmed, sturdy leatherette case, smart flannel lining, preventing marring of the Projector surface.



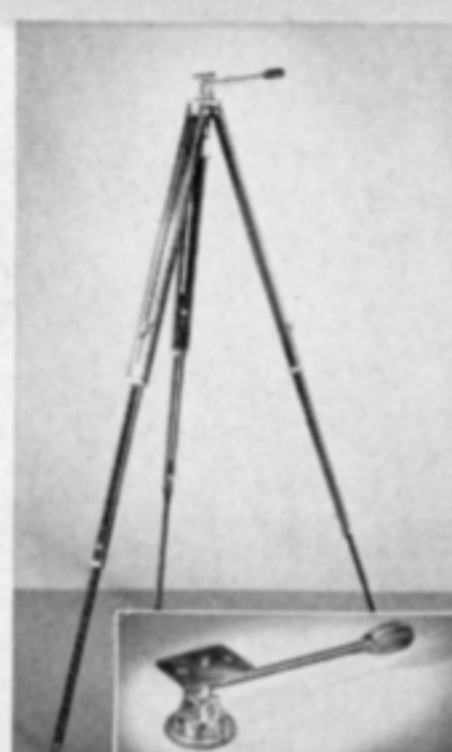
**FILM REELS AND CONTAINER CANS**

For the protection and storage of films. To prevent films from being ruined by dust, to keep them clean, dry, and cool.



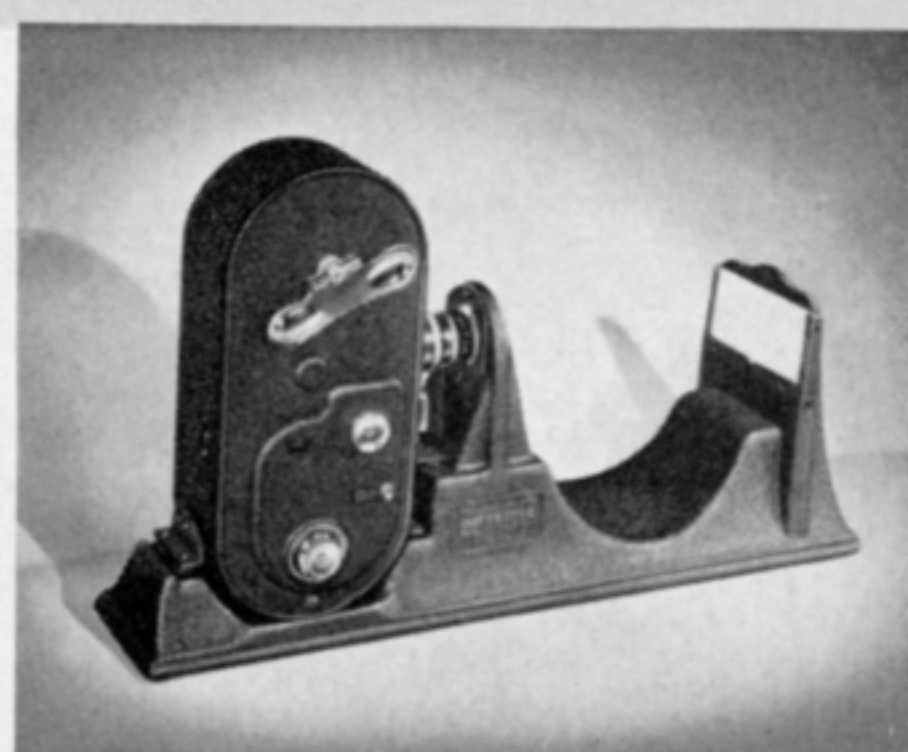
**KEYSTONE BEADED SCREENS**

One-piece collapsible unit. Automatic opening and closing features. Surface composition of minute glass crystals assure pictures which are brilliant and rich in tone quality. Various sizes (See Index).



**TRIPOD**

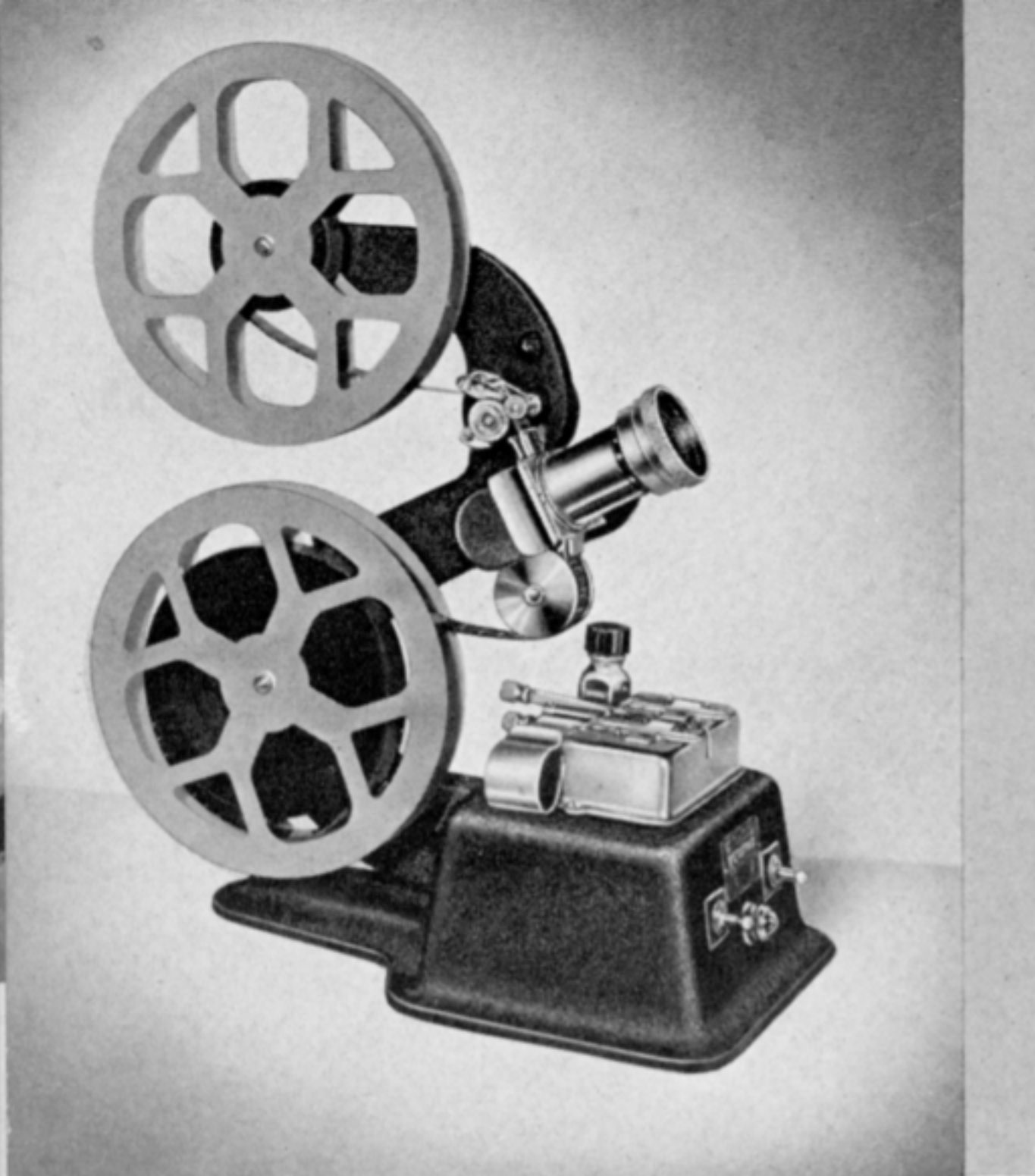
Walnut finish, highly polished. Cadmium plated metal parts, collapsible legs, light in weight, compact and rigid, tilting and revolving to any angle.



**KEYSTONE TITLING OUTFIT**

Designed primarily for use with Keystone Movie Cameras. A Titler will open a new field of movie enjoyment, enhancing the value, interest and continuity of your personal movies.





# *Editing with Regular Movie Action!*

**STROBO-EDITOR**

**MODEL V-20**

**T**HE NEW KEYSTONE STROBO-EDITOR applies an entirely new principle to the editing of motion picture film. A special lamp, the STROBOTRON TUBE, developed for this machine, employs a flashing, luminescent light, synchronized with the film passing through the aperture of the editor, eliminating blurring and assuring a steady and flickerless performance.

The STROBO-EDITOR offers actual motion pictures for film editing in broad daylight without the use of either a mechanical intermittent feed or shutter. Equipped with the Keystone De Luxe Splicer, eliminating scraping and water for accurate patch splices with minimum of time and effort.



## **KEYSTONE PICTOGRAPH Model 441**

### **FOR OPAQUE PICTURES**

For projecting enlargements, drawings, reading material, photographs, postcards, etc., **IN FULL COLORS.**

Indispensable for artists and sign makers — educational and instructive for school and home.

Front Surface Mirrors for accurate optical reflection.

Two Tubular 135 Watt Projection Bulbs.





*Model*  
*S-25*  
**200 WATT  
SLIDE  
PROJECTOR**

**F**OR USE with all 35 mm or bantam-sized transparencies in color or black and white. (2" x 2" Slides.) A brilliant illumination by a 200 watt lamp, with a patented heat absorbing unit to protect the film from burning or buckling, assures an excellent projection.

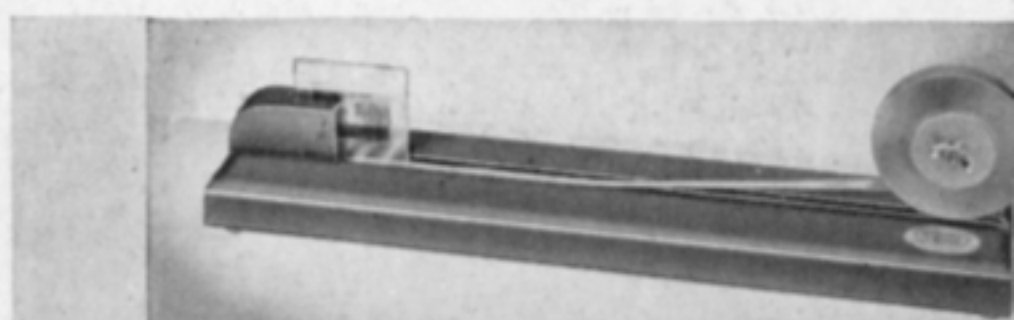
A cooling chamber acts as additional protection against excess heat on slides.

Beautifully finished with die-cast lamp housing and base, it is convenient to carry in a special carrying case.

The lens system is interchangeable and lenses from 3" to 7" focal length may be purchased optionally at a slight extra charge.

KEYSTONE SLIDE MAKER NO. 201 is designed for speed and efficiency in making still picture slides with the use of tape and masks. Simple and convenient to operate, it facilitates quick and precise assembly of 2" x 2" slides.

A full assortment of accessories such as slide cover glass, masks for glass slides, tape, etc., is available.







**FACTORY and GENERAL OFFICES AT BOSTON, MASS.**

**A**LL OVER THE WORLD Keystone Cameras and Projectors are used by a steadily increasing number of enthusiastic amateurs. Whether you go to London or Shanghai, Johannesburg or Rio de Janeiro, anywhere on the globe, you will find progressive photographic dealers who will be able to demonstrate to you Keystone equipment and supply you with Keystone accessories for your specific requirements.

Schools and churches, clubs and institutions, are recognizing the amazing values represented by Keystone products, supplementing their established position as outstanding line of Home Movie Equipment in homes everywhere.

Complete servicing facilities are available to Keystone owners and, when and if necessary, adjustments or repairs are provided promptly and efficiently.

All Keystone products are guaranteed to function properly and in accordance with this guarantee, any repairs or replacements owing to defects in workmanship or material will be made free of charge within one year from the date of purchase.

Keystone Equipment is 100% American made and a staff of skilled craftsmen and engineers utilizes the ample production facilities and modern up-to-date equipment of our factory at Boston, Mass., to create KEYSTONE QUALITY MERCHANDISE.



# Index and Price List

PAGE	MODEL	PRICE
	<b>CAMERAS</b>	
6-7	8mm Movie Cameras	
	Model K8 with f3.5 lens.....	\$26.50
	Model K8 with f2.7 lens.....	34.00
	Model K8 with f1.9 lens.....	57.00
14-15	16mm Movie Cameras	
	Model A7 with f1.5 lens with motor lock, seven speeds.....	71.00
	Model A7 with f2.7 lens with motor lock, seven speeds.....	44.50
	Model A3 with f1.5 lens with motor lock, three speeds.....	67.50
	Model A3 with f3.5 lens with motor lock, three speeds.....	35.00
	Model B1 with special f3.5 lens, one speed.....	29.95
	<b>PROJECTORS</b>	
	8mm Projectors	
8-9	Model R8, 500 watt, including 200-ft. aluminum reel, lamp and lens complete.....	55.00
	Model M8, 300 watt, including 200-ft. aluminum reel, lamp and lens complete.....	39.50
	16mm Projectors	
10	Model A81, 750 watt, including 400-ft. aluminum reel, lamp and lens complete.....	69.50
12-13	Model A75, 500 watt, including 400-ft. aluminum reel, lamp and lens complete.....	55.00
	Model A72, 300 watt, including 400-ft. aluminum reel, lamp and lens complete.....	44.50
	Model D64, 200 watt, including 400-ft. aluminum reel, lamp and lens complete.....	35.00
	<b>CAMERA LENSES</b>	
16	8mm	
	F/704— $\frac{1}{2}$ " Focus f1.9.....	42.00
	B/707— $\frac{1}{2}$ " Focus <del>f1.9</del> <b>f2.7</b> .....	19.50
	B/705, $\frac{1}{2}$ " f3.5.....	6.50
	T/715— $1\frac{1}{2}$ " Telephoto lens f3.5.....	34.50
	16 mm	
	A/701—1" Focus f1.5 Cine-Velostigmat.....	45.00
	B/708—1" f2.7.....	19.50
	A/703, f3.5 lens.....	6.50
	T/713—3" Telephoto lens.....	45.00



PAGE	MODEL	PRICE
	<b>LIGHT FILTERS</b>	
16	for use with 8mm and 16mm Cameras	
	No. 721—f3.5, f2.7, 16mm filter, f3.5, f2.7, f1.9 filter, Neutral Density.....	2.25
	No. 722—f3.5, f2.7, 16mm, f3.5 f2.7, f1.9, 8mm. Blue Filter for regular Kodachrome, when used indoors under artificial light.....	1.75
	No. 723—f3.5, f2.7, 16mm filter, f3.5, f1.9 8mm filter, Green	2.25
	No. 724—f3.5, f2.7, 16mm filter, f3.5, f1.9, 8mm filter, Red	2.25
	No. 726—f3.5, f2.7, 16mm filter, f3.5, f1.9, 8mm filter, 2X or 4X Yellow.....	1.75
	No. 727—f1.5, 16mm filter, 2X or 4X Yellow.....	4.00
	No. 727G—f1.5, 16mm filter, Green.....	4.00
	No. 727R—f1.5, 16mm filter, Red.....	4.00
	No. 728—1½" Telephoto, 8mm filter, 2X or 4X Yellow.....	4.00
	No. 728H—Haze filter for Kodachrome for 1½" Telephoto	4.00
	No. 729—3" Telephoto, 16mm filter, 2X or 4X Yellow.....	4.00
	No. 726H—f3.5, f2.7, 16mm filter, f3.5, f2.7 and f1.9, 8mm Haze filter, for Kodachrome.....	1.75
	No. 727H—f1.5 16mm, Haze Filter for Kodachrome.....	4.00
	No. Z—For type A Kodachrome for outdoors, f3.5, f2.7, f1.9, 16mm or 8mm.....	
	No. 17—f1.5 Filter for Kodachrome type A for outdoors.....	
	<b>PROJECTION LENSES</b>	
17	8mm	
	No. S/116 ¾" focus f2. ....	10.00
	No. S/116 1½" focus f2.5 .....	10.00
	16mm	
	No. A/801 1" focal length f2.46.....	8.50
	No. A/801 1½" focal length f1.8.....	8.50
	No. B/805 lens 2" focus f2.5.....	6.00
	No. D/807 lens 2¼" focus.....	2.50
	No. A-802 lens 3" focal length f2.3.....	15.00
	No. A-802 lens 3½" focal length f2.7.....	15.00
	No. A-802 lens 4" focal length f2.8.....	15.00
	<b>G. E. PROJECTION LAMPS</b>	
17	T-10, 200 watt lamp.....	2.50
	T-10, 300-watt lamp.....	2.90
	T-10, 500-watt lamp.....	3.75
	T-12, 750-watt lamp.....	4.50
	T-8, 200-watt lamp for 8mm G8 and D8 Projector.....	1.40
	T-8½, 300-watt lamp for J8 and M8 Projector.....	2.75



PAGE	MODEL	PRICE
	<b>KEYSTONE DE LUXE SPLICER</b>	
18	Model 837 Deluxe Splicer for 8mm Silent Film.....	3.75
	Model 737 Deluxe Splicer for 16mm Silent or Sound Film.....	3.75
	<b>NEW ILLUMINATED EDITOR AND DELUXE SPLICER</b>	
18	No. 835 Editing Outfit with Viewer and De Luxe Splicer for 16mm silent or sound film.....	11.50
	No. 836 Editing Outfit with Viewer and De Luxe Splicer for 8mm film.....	11.50
	No. 840 Rewinder and De Luxe Splicer for 16mm silent or sound film.....	7.50
	No. 841 Rewinder and De Luxe Splicer for 8mm film.....	7.50
	<b>PHOTO FLOOD LAMPS, REFLECTORS</b>	
19	Photolight Units..	
	Model 292 Clamp-on Photolight Unit for No. 1 Photoflood Lamp (without bulb).....	1.85
	Model 293 Clamp-on Photolight Unit for No. 2 Photoflood Lamp (without bulb).....	2.85
	Model 294 Portable Photolight Unit for No. 1 Photoflood Lamp (without bulb).....	4.50
	Model 295 Portable Photolight Unit for No. 2 Photoflood Lamp (without bulb).....	5.50
	Two-Lamp Portable Photolight Unit	
	Model No. 296 for No. 1 Photoflood Lamp (without bulb)	7.50
	Model No. 297 for No. 2 Photoflood Lamp (without bulb)	9.00
	Mazda Photoflood Lamps	
	No. 1.....	.20
	No. 2.....	.40
	<b>SPLICING OUTFIT</b>	
19	No. 734 Keystone Film Splicer for 8mm or 16mm Film with Cement and Water Bottle.....	1.25
	<b>CAMERA CARRYING CASES</b>	
19	No. 616 Camera Carrying Case, 8mm.....	3.00
	No. 614 Camera Carrying Case, 16mm.....	4.00
	<b>PROJECTOR CARRYING CASES</b>	
19	No. 617 Projector Carrying Case, 16mm.....	5.00
	No. 618 Projector Carrying Case, 8mm for J8 and L8.....	5.00
	No. 628 Projector Carrying Case, 8mm for M8 and R8.....	5.00
	No. 615 Carrying Case, S-25—Slide Projector.....	5.00



PAGE	MODEL	PRICE
	<b>FILM CONTAINER CANS AND FILM REELS</b>	
19	200' Film container can, aluminum for 8mm.....	.40 ea.
	400' Film container can, aluminum for 8mm.....	.60 ea.
	200' Aluminum reel 8mm.....	.40 ea.
	400' Aluminum reel 8mm.....	.60 ea.
	400' Film container can aluminum for 16mm.....	.60 ea.
	400' Aluminum reel 16mm .....	.60 ea.
	400' Steel reel 16mm .....	.40 ea.
	50' Reel 16mm .....	.15 ea.
	100' Reel 16mm .....	.20 ea.
	<b>KEYSTONE BEADED SCREENS</b>	
19	No. 607 Screen 27'' x 32'' .....	2.50
	No. 608 Keystone Special Beaded Screen 30'' x 40'' .....	10.50
	No. 610 Screen 30'' x 40'' .....	16.50
	No. 610/a Screen 36'' x 48'' .....	21.00
	No. 610/b Screen 39'' x 52'' .....	25.00
	No. 610/c Screen 45'' x 60'' .....	40.00
	<b>TRIPODS</b>	
19	No. 298 Tripod.....	10.00
	No. 298-H Tripod with Universal Tilting Head.....	16.50
	No. 299 Universal Tilting Head.....	6.50
	<b>KEYSTONE TITLING OUTFIT</b>	
19	No. 831 Titler for 16mm Keystone Camera.....	6.50
	No. 832 Titler to fit Keystone 8mm Camera.....	6.50
	Titler Cards, 8 mm or 16 mm, package .....	.15
	<b>KEYSTONE STROBO EDITOR</b>	
20	Model V-20 for 16mm Silent or Sound Film.....	36.50
	<b>KEYSTONE PICTOGRAPH</b>	
20	Model 441.....	16.50
	<b>KEYSTONE SLIDE PROJECTOR</b>	
21	Model S-25.....	29.95
	No. 201 Keystone Slide Maker.....	1.95
	Box of Slide Cover Glass, 36 pcs., 2'' x 2'' .....	.45
	Masks for Glass Slides, box of 50, 2'' x 2'' .....	.60
	Scotch Tape for binding Glass Slides, 108 ft. roll.....	1.10



# Index and Price List

PAGE	MODEL	PRICE
	<b>CAMERAS</b>	
6-7	8mm Movie Cameras	
	Model K8 with f3.5 lens.....	\$26.50
	Model K8 with f2.7 lens.....	34.00
	Model K8 with f1.9 lens.....	57.00
14-15	16mm Movie Cameras	
	Model A7 with f1.5 lens with motor lock, seven speeds.....	71.00
	Model A7 with f2.7 lens with motor lock, seven speeds.....	44.50
	Model A3 with f1.5 lens with motor lock, three speeds.....	67.50
	Model A3 with f3.5 lens with motor lock, three speeds.....	35.00
	Model B1 with special f3.5 lens, one speed.....	29.95
	<b>PROJECTORS</b>	
8-9	8mm Projectors	
	Model R8, 500 watt, including 400-ft. aluminum reel, lamp and lens complete.....	49.75
	Model M8, 300 watt, including 200-ft. aluminum reel, lamp and lens complete.....	39.50
	** Model CC-8, 300 watt, including 200-ft. aluminum reel, lamp and lens complete.....	29.75
	** Model C-8, 200 watt, including 200-ft. aluminum reel, lamp and lens complete.....	24.75
	16mm Projectors	
10-11	Model A81, 750 watt, including 400-ft. aluminum reel, lamp and lens complete.....	69.50
12-13	Model A75, 500 watt, including 400-ft. aluminum reel, lamp and lens complete.....	55.00
	Model A72, 300 watt, including 400-ft. aluminum reel, lamp and lens complete.....	44.50
	** Model CC-16, 300 watt, including 400-ft. aluminum reel, lamp and lens complete.....	29.75
	** Model C-16, 200 watt, including 400-ft. aluminum reel, lamp and lens complete.....	24.75
	* Model D64, 200 watt, including 400-ft. aluminum reel, lamp and lens complete.....	35.00
	<b>CAMERA LENSES</b>	
16	8mm	
	F/704—1½" Focus f1.9.....	42.00
	B/707—1½" Focus f2.7.....	19.50
	B/705—1½" f3.5.....	6.50
	T/715—1½" Telephoto lens f3.5.....	34.50
	16mm	
	A/701—1" Focus f1.5 Cine-Velostigmat.....	45.00
	B/708—1" f2.7.....	19.50
	A/703—f3.5 lens.....	6.50
	T/713—3" Telephoto Lens f.4.....	45.00
	** A/718—15mm f2.7 Fixed Focus, Wide Angle Lens for 16mm	27.50
	<b>LIGHT FILTERS</b>	
16	For use with 8mm and 16mm Cameras	
	No. 721—Neutral Density Filter for f3.5, f2.7 16mm, for f3.5, f2.7, f1.9, 8mm.....	2.25
	No. 723—Green Filter for f3.5, f2.7, 16mm, for f3.5, f2.7, f1.9, 8mm.....	2.25

\* Discontinued

\*\* Not illustrated in this Catalog—(see insert).



PAGE	MODEL	PRICE
16	<b>LIGHT FILTERS (Continued)</b>	
	No. 724—Red Filter for f3.5, f2.7, 16mm, for f3.5, f2.7, f1.9 8mm.....	\$2.25
	No. 726—Yellow Filter 2X or 4X (specify density) for f3.5, f2.7, 16mm, for f3.5, f2.7, f1.9, 8mm.....	1.75
	No. 727—Yellow Filter 2X or 4X (specify density) for f1.5, 16mm.....	4.00
	No. 727/G—Green Filter for f1.5, 16mm.....	4.00
	No. 727/R—Red Filter for f1.5, 16mm.....	4.00
	No. 728—Yellow Filter 2X or 4X (specify density) for 1½" Telephoto 8mm.....	4.00
	No. 728/H—Haze Filter for use with Kodachrome film only for 1½" Telephoto 8mm.....	4.00
	No. 729—Yellow Filter 2X or 4X (specify density) for 3" Telephoto 16mm.....	4.00
	No. 726/H—Haze Filter for f3.5, f2.7, 16mm, for f3.5, f2.7, f1.9, 8mm.....	1.75
	No. 727/H—Haze Filter, for f1.5, for 16mm Kodachrome film only.....	4.00
	No. 331—Filter (Blue) for Regular Kodachrome, to use with artificial light, for f3.5, f2.7, 16mm, for f3.5, f2.7, f1.9, 8mm.....	1.75
	No. 332—Filter (Blue) for Regular Kodachrome, for f1.5, 16mm.....	4.00
	No. Z—Filter for Type A Kodachrome (for outdoors) for f3.5, f2.7, 16mm, for f3.5, f2.7, f1.9, 8mm.....	1.50
	No. 17—Filter for Type A Kodachrome, (for outdoors), for f1.5.....	2.25
	No. 751—Portrait Attachment for 8mm or 16mm, f3.5, f2.7, lenses.....	1.00
17	<b>PROJECTION LENSES</b>	
	8mm	
	No. S/116 ¾" focus f2.....	10.00
	No. S/116 1" focus f1.85.....	6.50
	No. S/116 1½" focus f2.5.....	10.00
	16mm	
	No. A/801 1" focal length f2.46.....	8.50
	No. A/801 1½" focal length f1.8.....	8.50
	No. A/801 2" focus f1.6 (standard equipment for model A-81 Projector).....	8.50
	No. B/805 lens 2" focus f2.5.....	6.50
	No. D/807 lens 2¼" focus.....	2.50
	No. A-802 lens 3" focal length f2.3.....	15.00
	No. A-802 lens 3½" focal length f2.7.....	15.00
	No. A-802 lens 4" focal length f2.8.....	15.00
	<b>G. E. PROJECTION LAMPS</b>	
	T-10, 200 watt lamp.....	2.50
	T-10, 300 watt lamp.....	2.90
	T-10, 500 watt lamp.....	3.75
	T-12, 750 watt lamp.....	4.50
	T-8, 200 watt lamp for 8mm G8, D8, C8, C16 Projectors.....	1.40
	T-8½, 300 watt lamp for J8, M8, CC8, CC16, C8, C16 Projectors.....	2.75
	<b>PROJECTION LAMPS—KEYSTONE</b>	
	** No. RT-12, 750 watt lamp.....	4.50
	** No. RT-10, 500 watt lamp.....	3.75
	** No. RT-10, 300 watt lamp.....	2.90
	** No. RT-10, 200 watt lamp.....	2.50
	** No. RT-8½, for J8, M8, C8, C16, CC8, CC16 Projectors, 300 watt lamp.....	2.75
	** No. RT-8, for 8mm, G8, C8, C16 and D8 Projectors, (25 hr.) 200 watt.....	1.40

\*\* Not illustrated in this Catalog.



PAGE	MODEL	PRICE
	<b>KEYSTONE DE LUXE SPLICER</b>	
18	Model 837 Deluxe Splicer for 8mm Silent Film.....	\$3.75
	Model 737 Deluxe Splicer for 16mm Silent or Sound Film.....	3.75
	Model 734 Keystone Film Splicer for 8mm or 16mm Film, with cement and water bottle complete.....	1.25
	<b>ILLUMINATED EDITOR AND DE LUXE SPLICER</b>	
18	** No. 745 Editing Outfit, for 8mm or 16mm film.....	\$8.50
	** No. 747 Viewer (only) for above.....each	4.00
	No. 835 Editing Outfit with Viewer and De Luxe Splicer for 16mm silent or sound film.....	11.50
	No. 836 Editing Outfit with Viewer and De luxe Splicer for 8mm film.....	11.50
	No. 840 Rewinder and De Luxe Splicer for 16mm silent or sound film.....	7.50
	No. 841 Rewinder and De Luxe Splicer for 8mm film.....	7.50
	<b>GEAR REWIND BRACKETS</b>	
18	No. 748 Gear Rewind Brackets for both 8mm and 16mm Reels. Set of two.....	2.50
	<b>PHOTOFLOOD LAMPS, REFLECTORS</b>	
19	Photolight Units	
	Model 292 Clamp-on Photolight Unit for No. 1 Photoflood Lamp (without bulb).....	1.25
	Model 293 Clamp-on Photolight Unit for No. 2 Photoflood Lamp (without bulb).....	1.75
	Model 294 Portable Photolight Unit for No. 1 Photoflood Lamp (without bulb).....	3.50
	Model 295 Portable Photolight Unit for No. 2 Photoflood Lamp (without bulb).....	4.00
19	Two Lamp Portable Photolight Unit	
	Model 296 for No. 1. Photoflood Lamp (without bulb).....	5.50
	Model 297 for No. 2. Photoflood Lamp (without bulb).....	6.50
	Mazda Photoflood Lamps	
	No. 1 Rated life of lamp 2 hours	
	Daylight Photoflood Lamp.....	.50
	Regular Photoflood Lamp.....	.20
	No. 2 Rated life of lamp 6 hours	
	Daylight Photoflood Lamp.....	1.00
	Regular Photoflood Lamp.....	.40
	<b>CAMERA CARRYING CASES</b>	
19	** No. 620 De Luxe Candid type Camera Carrying Case for instant use for K-8 8mm cameras.....	5.00
	** No. 619 "Candid" Camera Carrying Case for instant use for Keystone 8mm Camera.....	2.75
	** No. 622 De Luxe 16mm Camera Carrying Case.....	5.00
	No. 614 16 mm Camera Carrying Case.....	4.00
	** No. 621 De Luxe 8mm Camera Carrying Case.....	4.00
	No. 616 8mm Camera Carrying Case.....	3.00
	<b>PROJECTOR CARRYING CASES</b>	
19	No. 617 Projector Carrying Case, 16mm for A-81, A-75, A-72, D-64.....	5.00
	No. 628 Projector Carrying Case, 8mm for M-8 an R-8.....	5.00
	No. 615 Projector Carrying Case, S-25 Slide Projector.....	4.00
	** No. 631 Projector Carrying Case, for D-8 and D-759 Pro- jectors.....	4.00
	** No. 613 Projector Carrying Case, for C8, CC8, C16, CC16	4.00

\*\* Not illustrated in this Catalog.



PAGE	MODEL	PRICE
19	<b>FILM CONTAINER CANS AND FILM REELS</b>	
	400' Film Container Can, aluminum for 16mm.....	\$ .60
	400' Film Container Can, aluminum for 8mm.....	.60
	200' Film Container Can, aluminum for 8mm.....	.40
	200' aluminum Reel (8mm).....	.40
	400' aluminum Reel (8mm).....	.60
	400' aluminum Reel (16mm).....	.60
	400' steel Reel (16mm or 8mm).....	.40
	100' Reel (16mm or 8mm).....	.20
	50' Reel (16mm or 8mm).....	.15
19	<b>KEYSTONE BEADED SCREENS</b>	
	No. 607 Screen 27" x 32".....	2.50
	No. 608 Keystone Special Beaded Screen 30" x 40".....	10.50
	No. 610 Screen 30" x 40".....	15.00
	No. 610/a Screen 36" x 48".....	19.00
	No. 610/b Screen 39" x 52".....	23.00
	No. 610/c Screen 45" x 60".....	36.75
	<b>Keystone Super De Luxe Tripod Screen</b>	
	** No. 600 Screen 30" x 40".....	15.00
	** No. 600A Screen 36" x 48".....	20.00
	** No. 600B Screen 42" x 56".....	28.50
	<b>Triple Duty Special Tripod Screens</b>	
	** No. 601 Screen 30" x 40" Crystal Bead.....	10.50
	** No. 601A Screen 36" x 48" Crystal Bead.....	13.50
19	<b>TRIPODS</b>	
	No. 298 Tripod.....	8.00
	No. 298-H Tripod with Universal Tilting Head.....	13.00
	No. 299 Universal Tilting Head.....	5.00
19	<b>KEYSTONE TILTING OUTFIT</b>	
	No. 831 Titler for 16mm Keystone Camera.....	6.50
	No. 832 Titler to fit Keystone 8mm Camera.....	6.50
	Titler Cards, 8mm or 16mm, package.....	.15
	<b>FADETTE</b>	
	** No. 19B Fadette for 5/8" dia. lens hood (f3.5 and f2.7 for both 8mm and 16mm Cameras and f1.9 for 8mm Cameras).....	5.95
	** No. 19D Fadette for 1 1/16" lens hood (f1.5 for 16mm Cameras).....	5.95
	** No. 19A Fad-O-Mask to fit either of above Fadette.....	2.50
	Combination Fadette and Fad-O-Mask.....	7.75
20	<b>KEYSTONE STROBO EDITOR</b>	
	No. V-20 Strobe Editor for 16mm only (silent or sound film)	36.50
	** Strobotron Replacement Lamps.....	5.50
20	<b>KEYSTONE PICTOGRAPH</b>	
	Model 441.....	16.50
21	<b>KEYSTONE SLIDE PROJECTOR</b>	
	Model S-25 Slide Projector.....	27.50
	No. 201 Keystone Slide Maker.....	1.95
	** No. 2031 Slide Carrier.....	2.00
	** No. 2032 Box of Slide Cover Glass, 36 pcs. 2" x 2".....	.45
	** No. 2033 Masks for Glass Slides, box of 50, 2" x 2".....	.60
	** No. 2034 Scotch Tape for binding Glass Slides, 66 ft. roll.....	.50
	** No. 2036 Extra lenses available for S-25 Slide Projector, 3", 4", 6" and 7" focal lengths.....	16.50
	** No. 2037 Metal Slides For Transparencies, Box of 18 Sets	1.80
	<b>CAMERA SPOOLS</b>	
	** No. 612 Standard 50 ft. Camera Spool, 16mm.....	.25
	** No. 626 Standard 100 ft. Camera Spool, 16mm.....	.40
	** No. 611A Standard 25 ft. for Single Width for 8mm Camera	.40
	** No. 611 Standard 25 ft. for Double Width for 8mm Camera	.40

\*\* Not illustrated in this Catalog.





**KEYSTONE  
PRECISION  
WORKMANSHIP**



**KEYSTONE EXHIBIT:  
NEW YORK WORLD'S FAIR  
COMMUNICATIONS BLDG.**

**NEW YORK SHOWROOMS  
Fifth Avenue Building  
200 Fifth Avenue  
New York City**

**Address all communications  
to the Boston Office**



**KEYSTONE MANUFACTURING COMPANY**

**288 A STREET  
BOSTON, MASS., U.S.A.**

**ON EXHIBITION AT THE NEW YORK WORLD'S FAIR**