

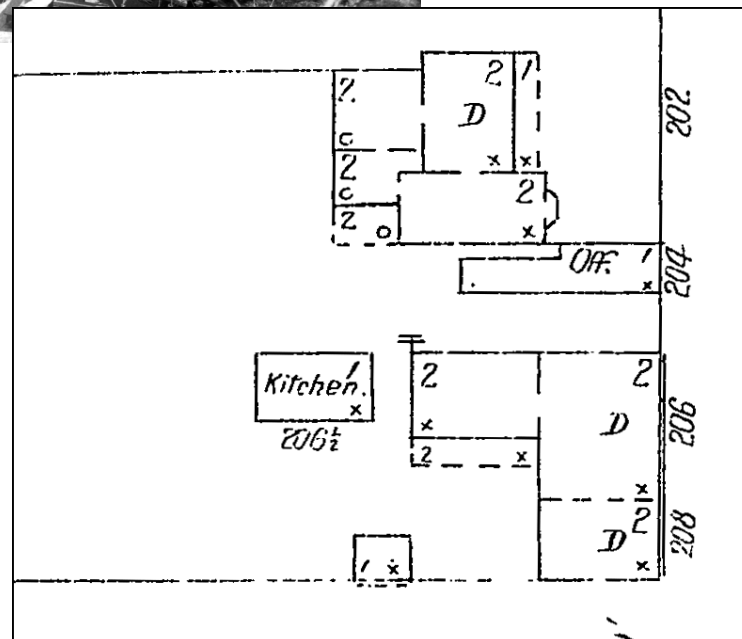


Above: c.1900 image of the Shellman yard showing the loom house.

THE LOOM HOUSE

This line of stones marks the approximate location of a log structure that stood behind the Sherman-Fisher-Shellman House.

The one-and-one-half story structure served as a loom house. The 1822 inventory of the estate of Jacob Sherman, the first owner of the house, lists nearly 900 yards of linen and cotton cloth which had been woven by at least one black slave. The loom house was also probably intended for a slave quarters.



In the late 19th century the building appears to have been used as a summer kitchen. It was demolished sometime between 1904 and 1908.

Left: Detail from the 1904 Sanborn map, showing the location of the loom house in relation to the rear of the Shellman house.