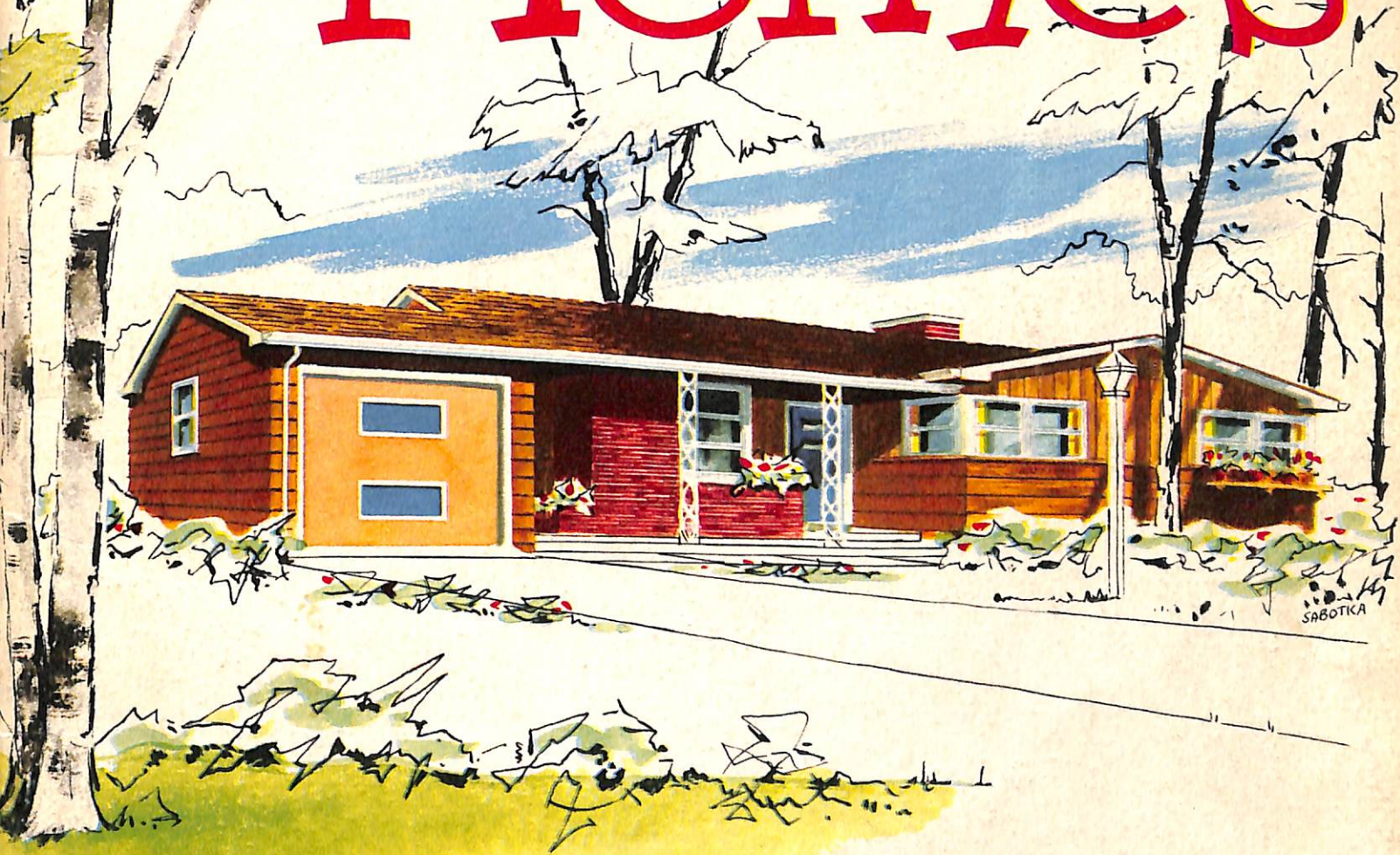


Select

B. Home

Homes



**WALTER J. CONKLIN & SON**

*Building Materials*

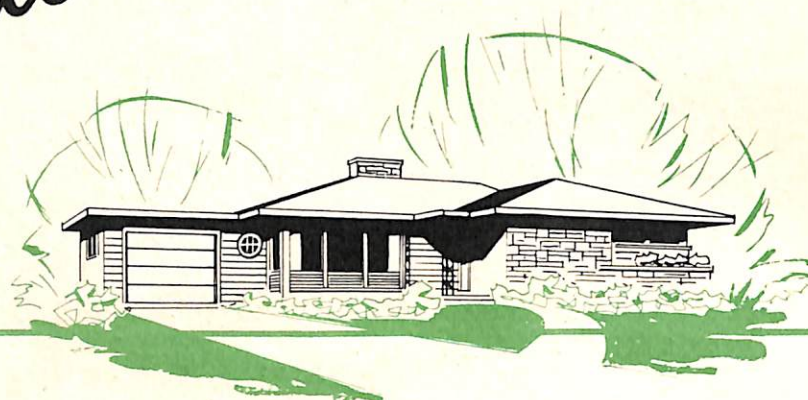
Phone HO 9-2314

**CHESTER, N. Y.**





Select



Homes

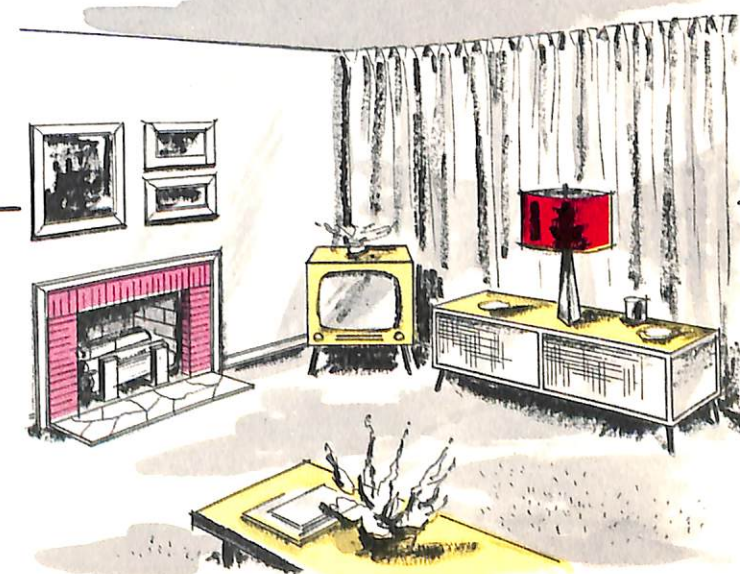
© MCMLVI by National Plan Service, Inc.  
Printed in U.S.A.

## planned for easy and carefree living

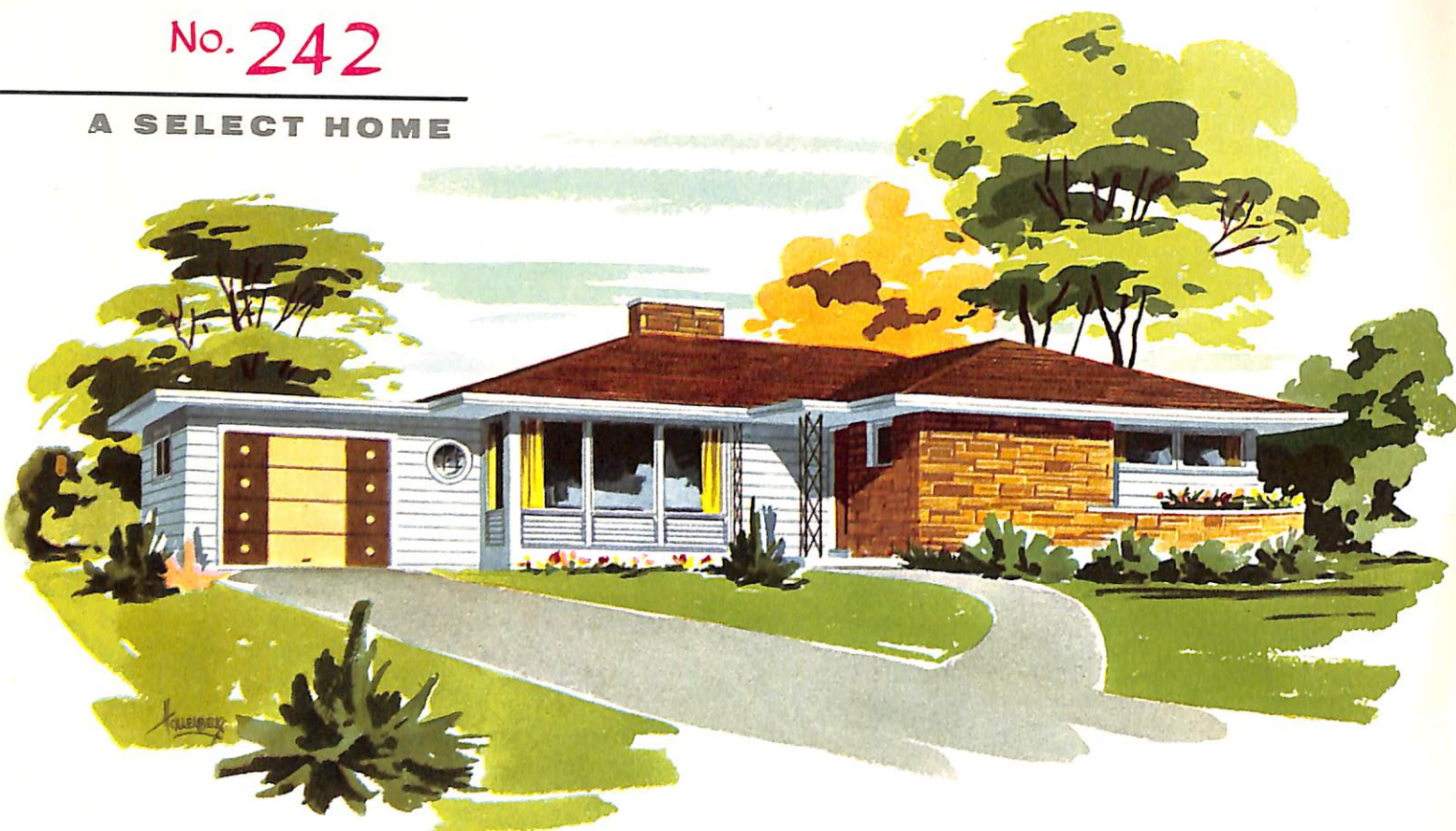
It is our firm belief that your home must function in keeping with today's better living tempo. As the family center, it must be comfort-designed, easy to care for and provide adequate recreational areas for all. Thus, both children and grownups were considered in the planning of the unusual and attractive homes featured in this all-new plan book.

Each home is an example of good taste and individuality in styling resulting from sound, down-to-earth planning to give you a better home within reach of the family budget. As you study the floor plans and illustrations throughout this book, you'll find multi-use rooms, dens, terraces, garden view living areas, porches, playrooms, family rooms, outside storage areas and other practical and inviting facilities included for your convenience and living enjoyment.

In brief, you can find here the select home of your choice . . . and at a price you can afford. All information regarding materials and construction costs is yours for the asking . . . it's all a part of our friendly home planning and building service. Call or visit our office and let us guide you to carefree and easy living now.



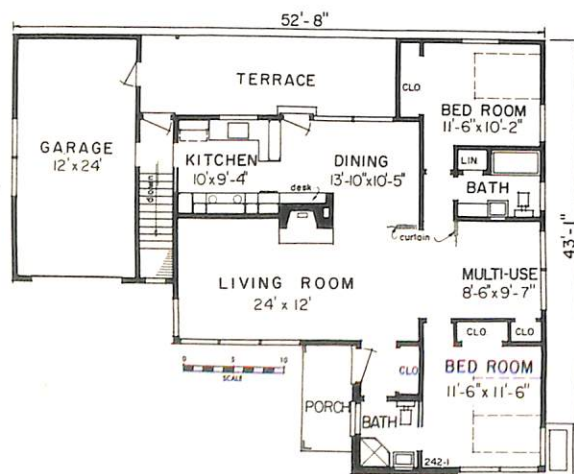




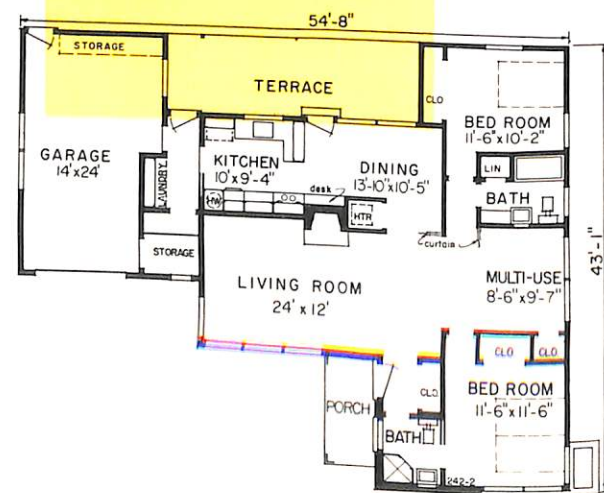
## for your living enjoyment

A pleasing exterior and carefully planned interior combine to make this an ideal home for city or suburb. Terrace, multi-use room and two baths are outstanding features included for your comfort.

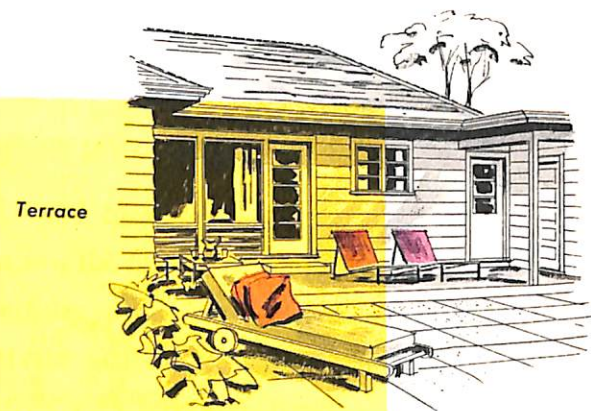
Living Area  
Plan 1 — 1,241 sq. ft.  
Plan 2 — 1,270 sq. ft.



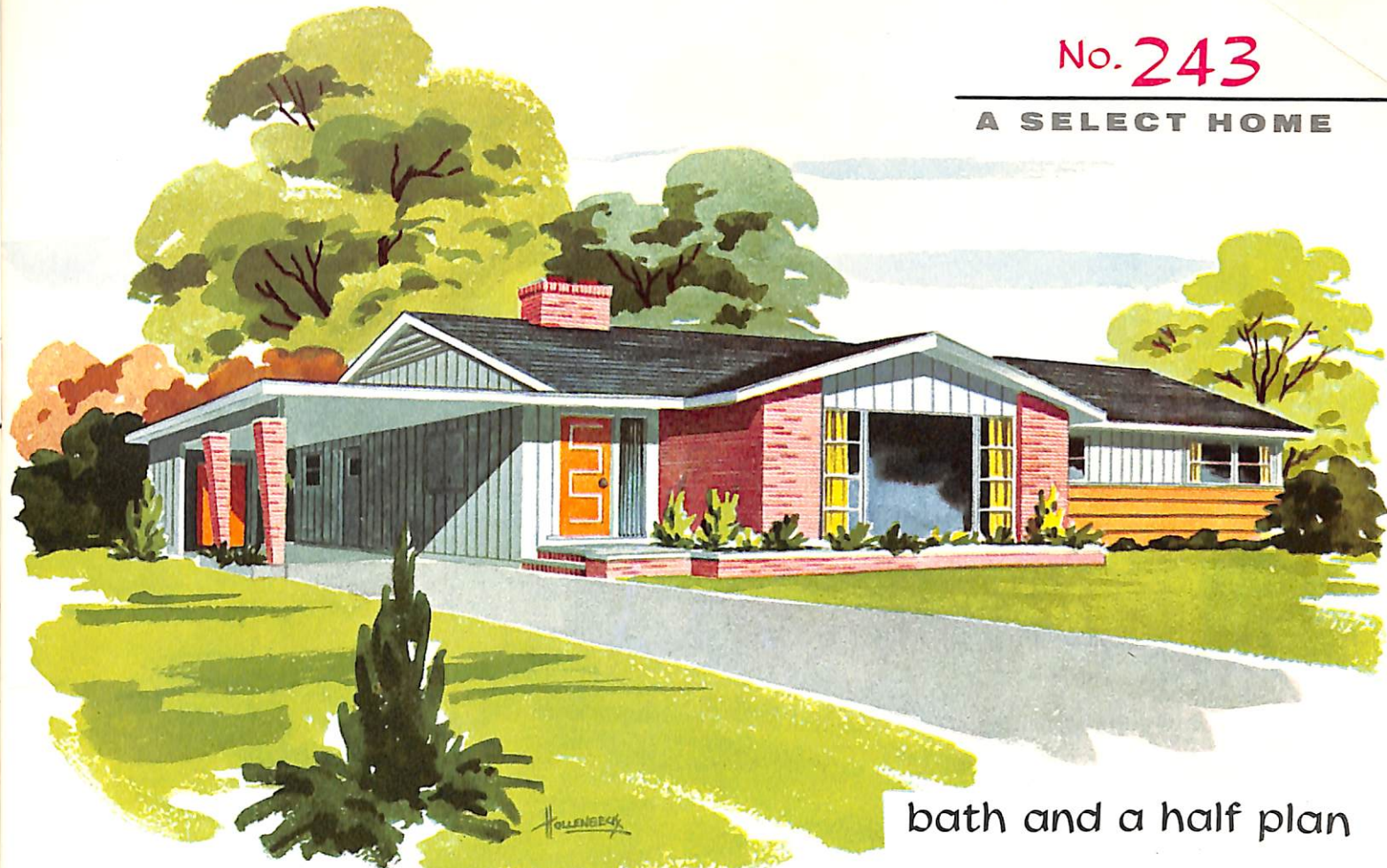
PLAN 1 WITH BASEMENT



PLAN 2 WITHOUT BASEMENT



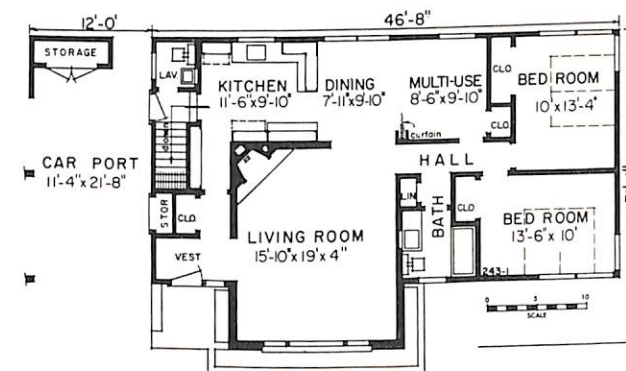
Terrace



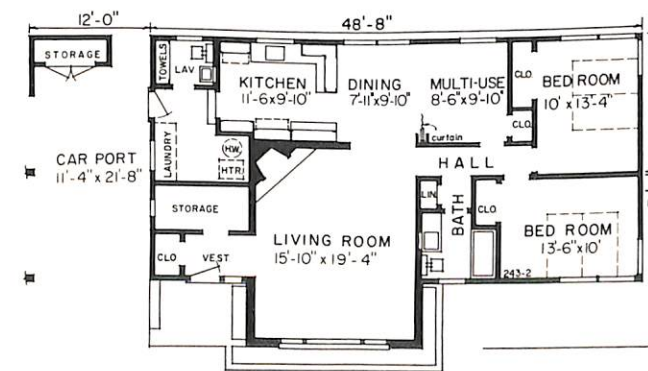
## bath and a half plan

Planned to give you the utmost in living comfort throughout the years, this home boasts many desirable features. In addition to the multi-use room, note the modern handling of fireplace and wall illustrated below.

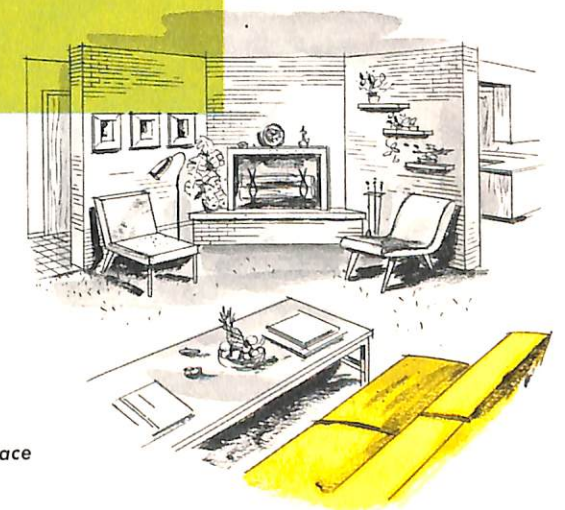
Living Area  
Plan 1 — 1,263 sq. ft.  
Plan 2 — 1,312 sq. ft.



PLAN 1 WITH BASEMENT



PLAN 2 WITHOUT BASEMENT



Fireplace





Fireplace and Bookshelves in Family Room

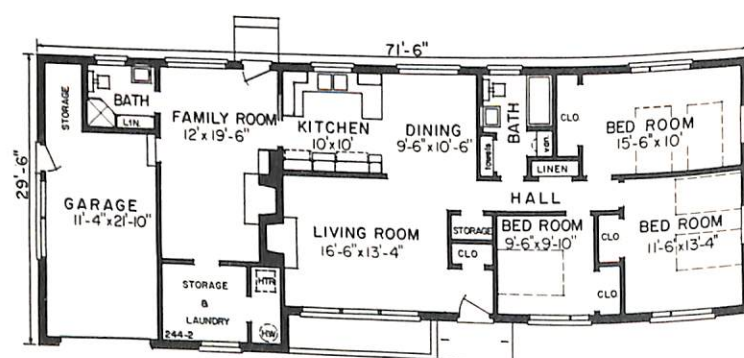
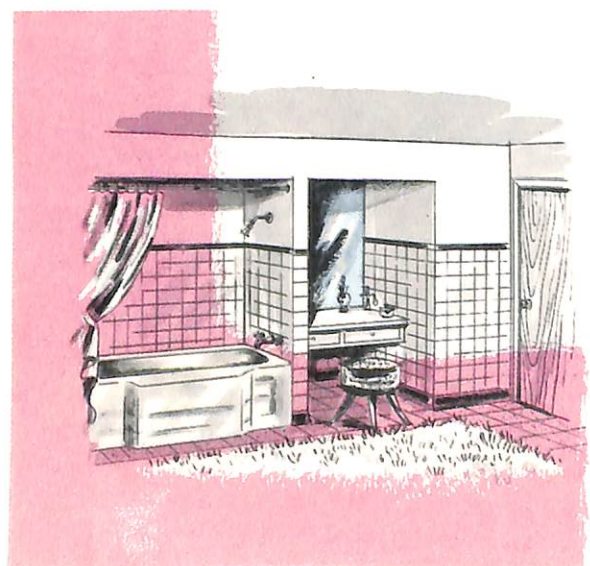
No. 244

A SELECT HOME

beauty in brick

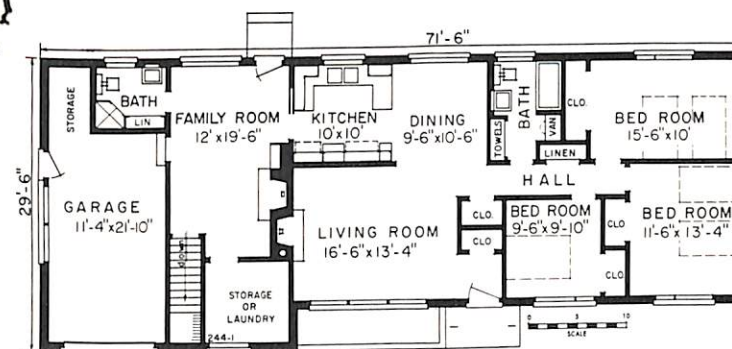
The family interested in a three bedroom modern living plan will appreciate this home. Only a study of the floor plans and drawings reveal the built-in comfort and convenience that you can enjoy for a lifetime.

Vanity in Bath



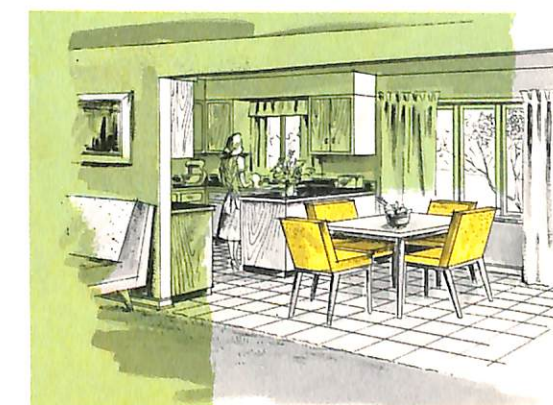
PLAN 2 WITHOUT BASEMENT

Living Area  
Plan 1 or 2 — 1,557 sq. ft.



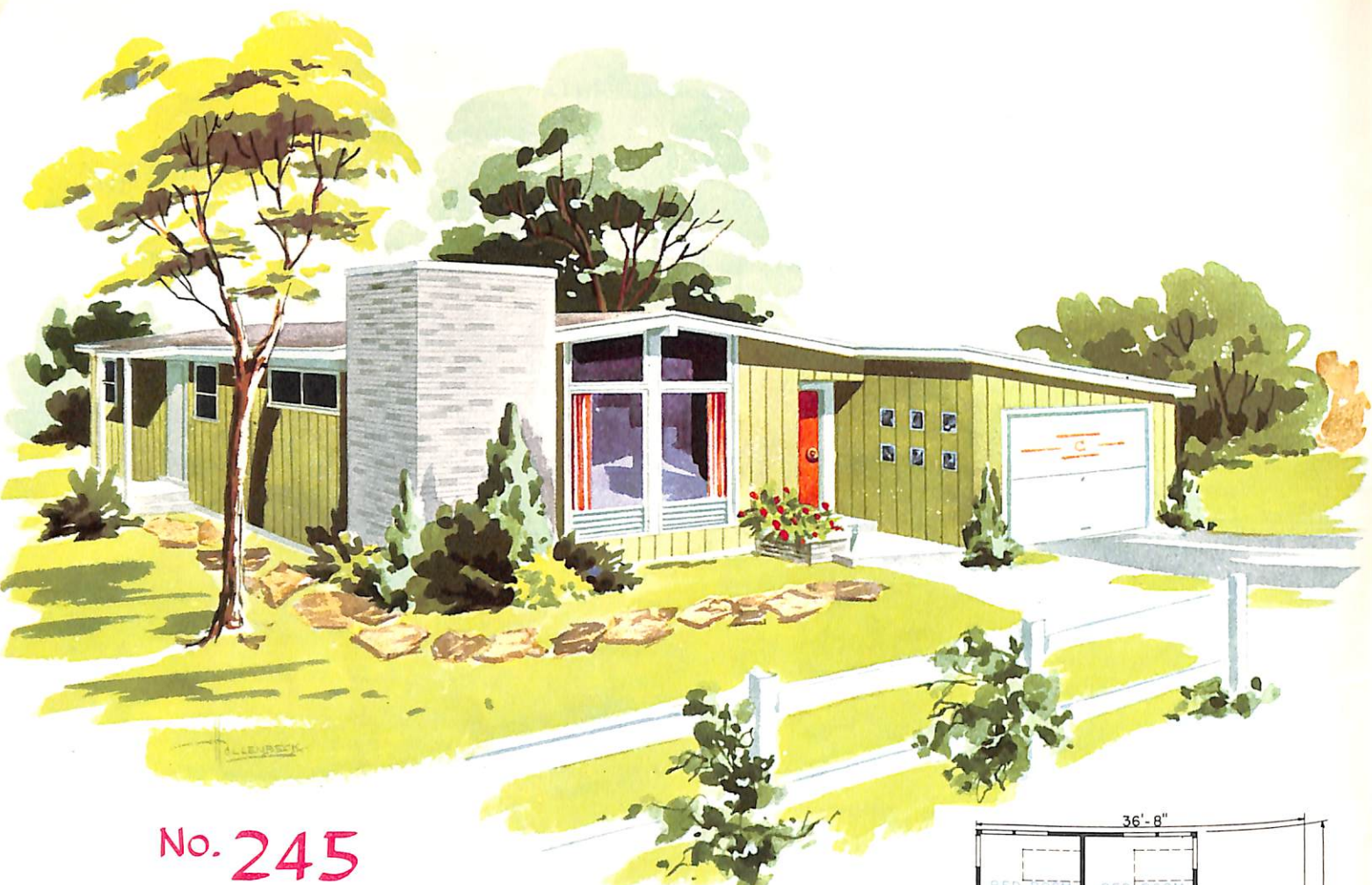
PLAN 1 WITH BASEMENT

Blueprint plans are available for all homes illustrated, either as shown or in reverse position. See us for your plans.



View of Kitchen





No. 245

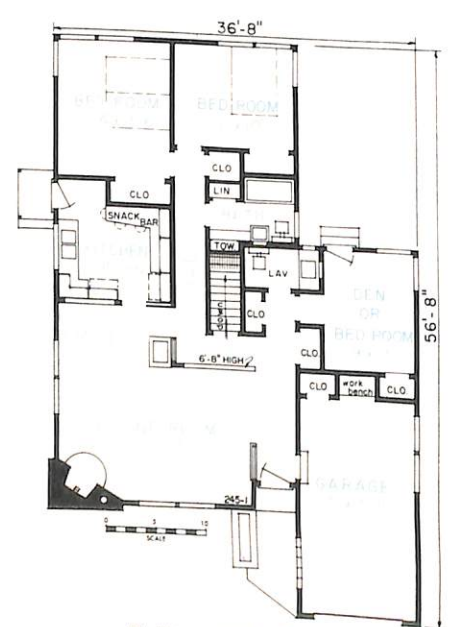
A SELECT HOME

comfortable and carefree

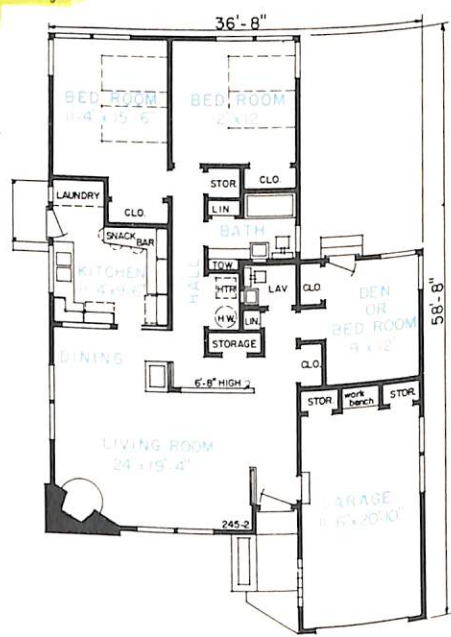
Low pitch roof and attractive exterior of vertical siding enclose this easy living plan. Note how the central hall, one of the many features, serves every room in the house.



Partition and Studio Ceiling

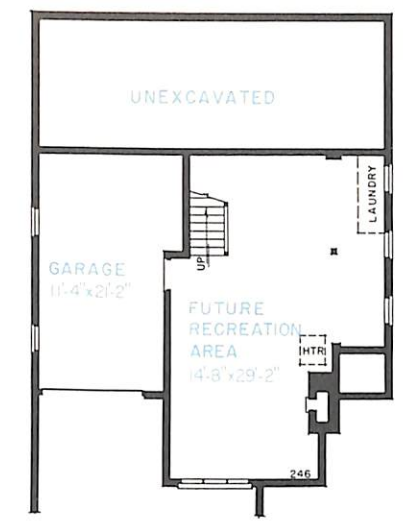


PLAN 1 WITH BASEMENT



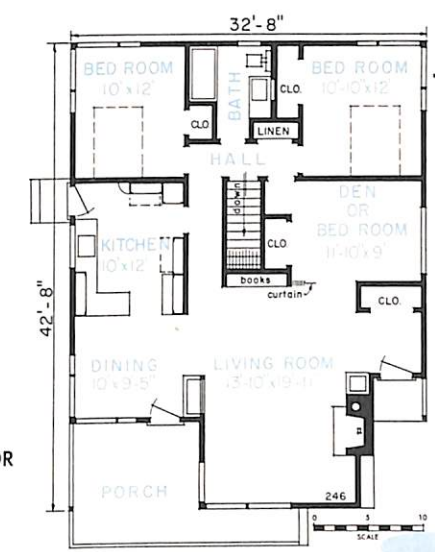
PLAN 2 WITHOUT BASEMENT

Living Area  
Plan 1 — 1,330 sq. ft.  
Plan 2 — 1,413 sq. ft.



BASEMENT

Living Area — 1,176 sq. ft.



FIRST FLOOR



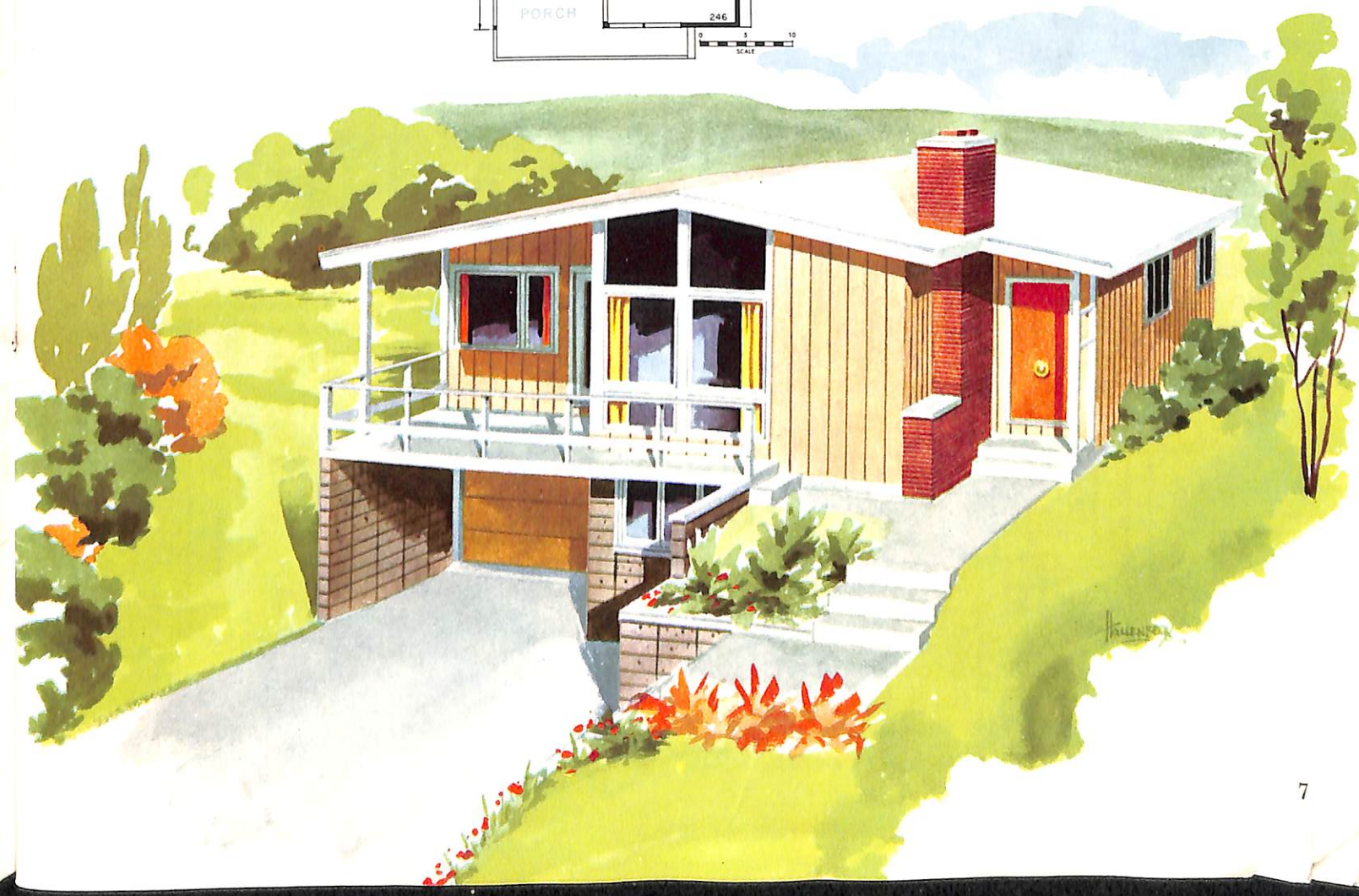
View of  
Living-Dining Area

No. 246

A SELECT HOME

for a sloping site

Pleasing arrangement of fireplace and planter, vanity bath and den or third bedroom are some of the features of this unusual plan. Garage, laundry and future recreation room are located in the basement.





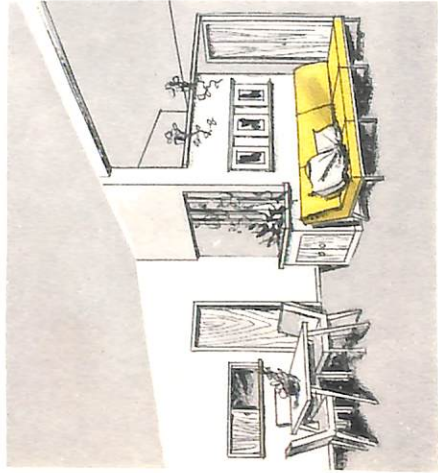


No. 245

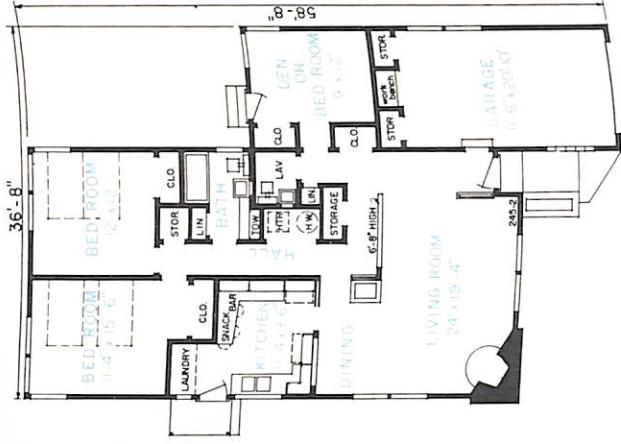
## A SELECT HOME

comfortable and carefree

Low pitch roof and attractive exterior of vertical siding enclose this easy living plan. Note how the central hall, one of the many features, serves every room in the house.

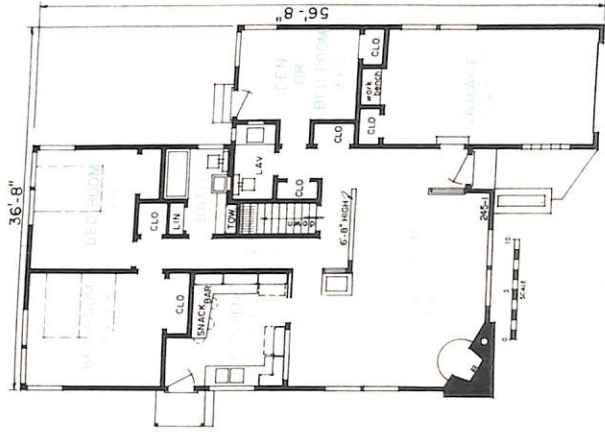


Partition and Studio Ceiling

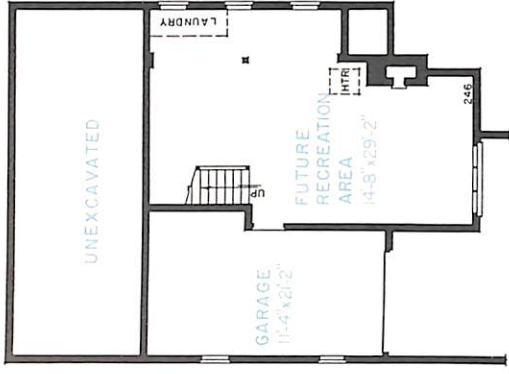


PLAN 2 WITHOUT BASEMENT

Living Area  
Plan 1 — 1,330 sq. ft.  
Plan 2 — 1,413 sq. ft.

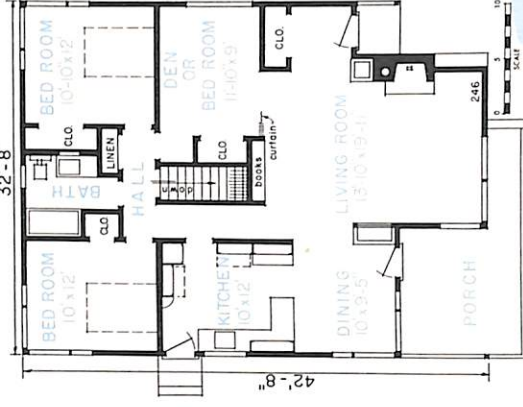


PLAN 1 WITH BASEMENT



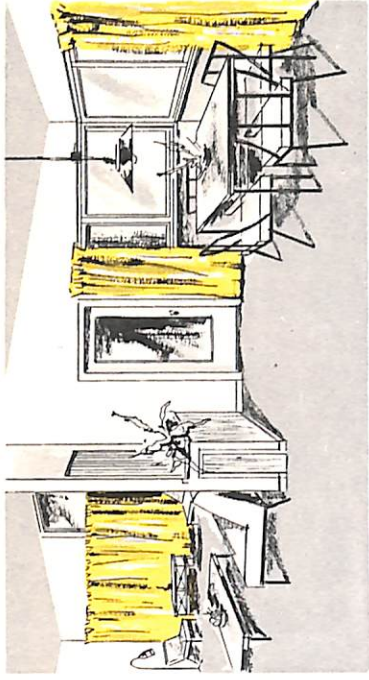
BASEMENT

Living Area — 1,176 sq. ft.



FIRST FLOOR

View of  
Living-Dining Area



No. 246

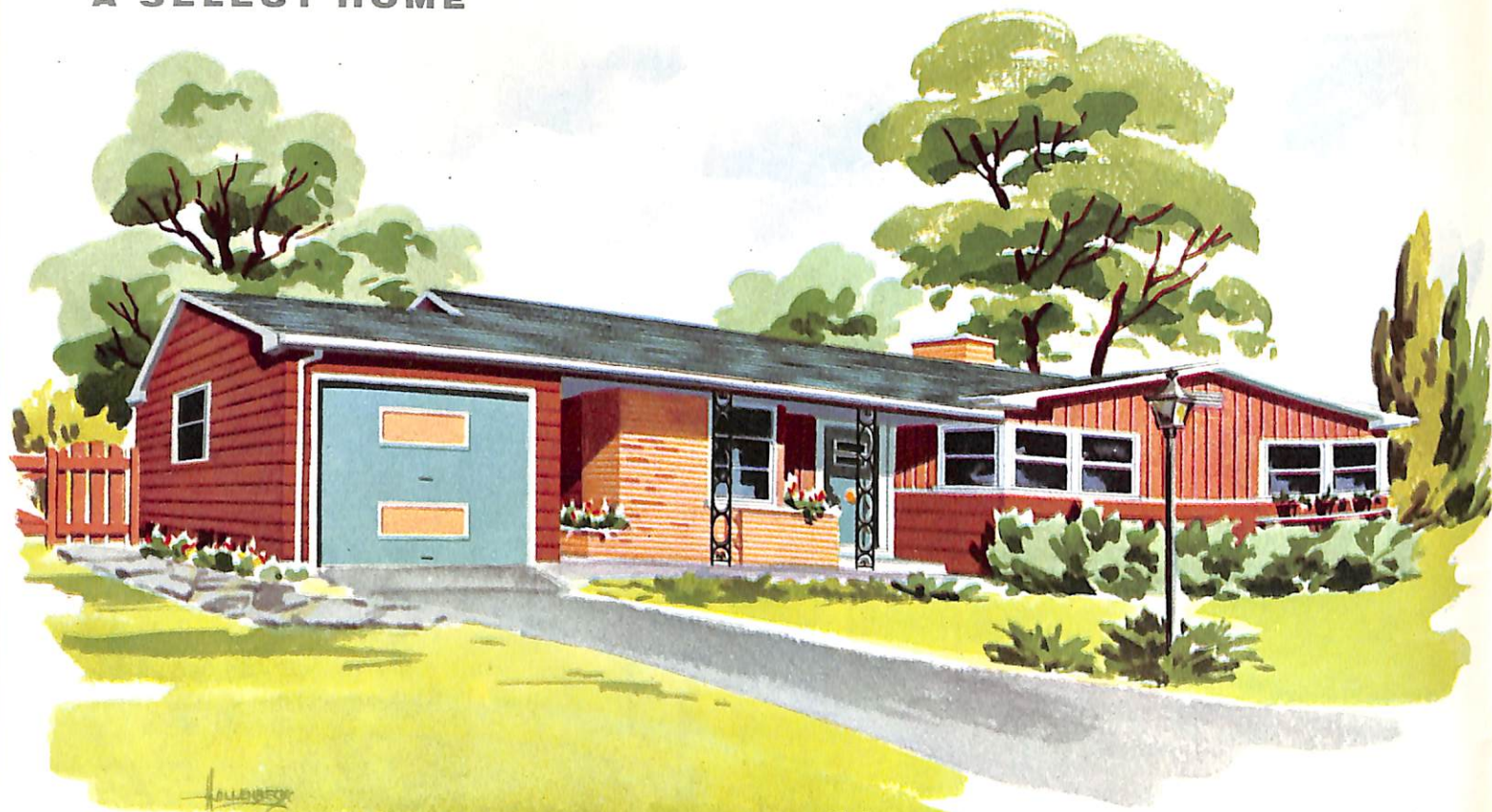
## A SELECT HOME

for a sloping site

Pleasing arrangement of fireplace and planter, vanity bath and den or third bedroom are some of the features of this unusual plan. Garage, laundry and future recreation room are located in the basement.

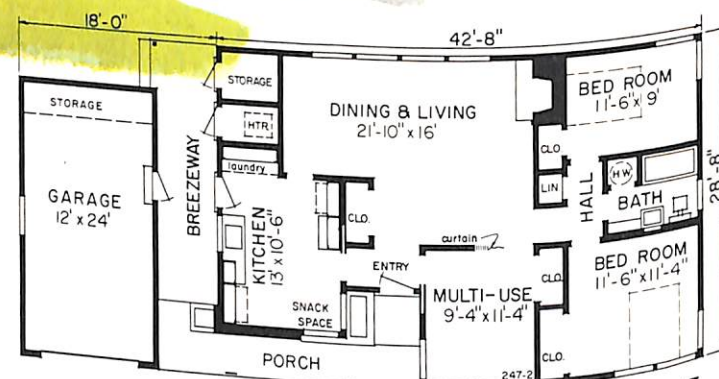






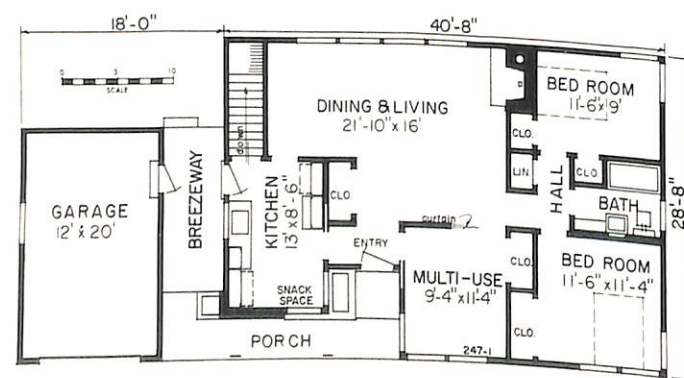
### garden view plan

In this home the multi-use room can serve as a third bedroom, playroom or den as needed. Horizontal siding, brick and vertical siding were combined to provide the attractive exterior of this garden view plan.



PLAN 2 WITHOUT BASEMENT

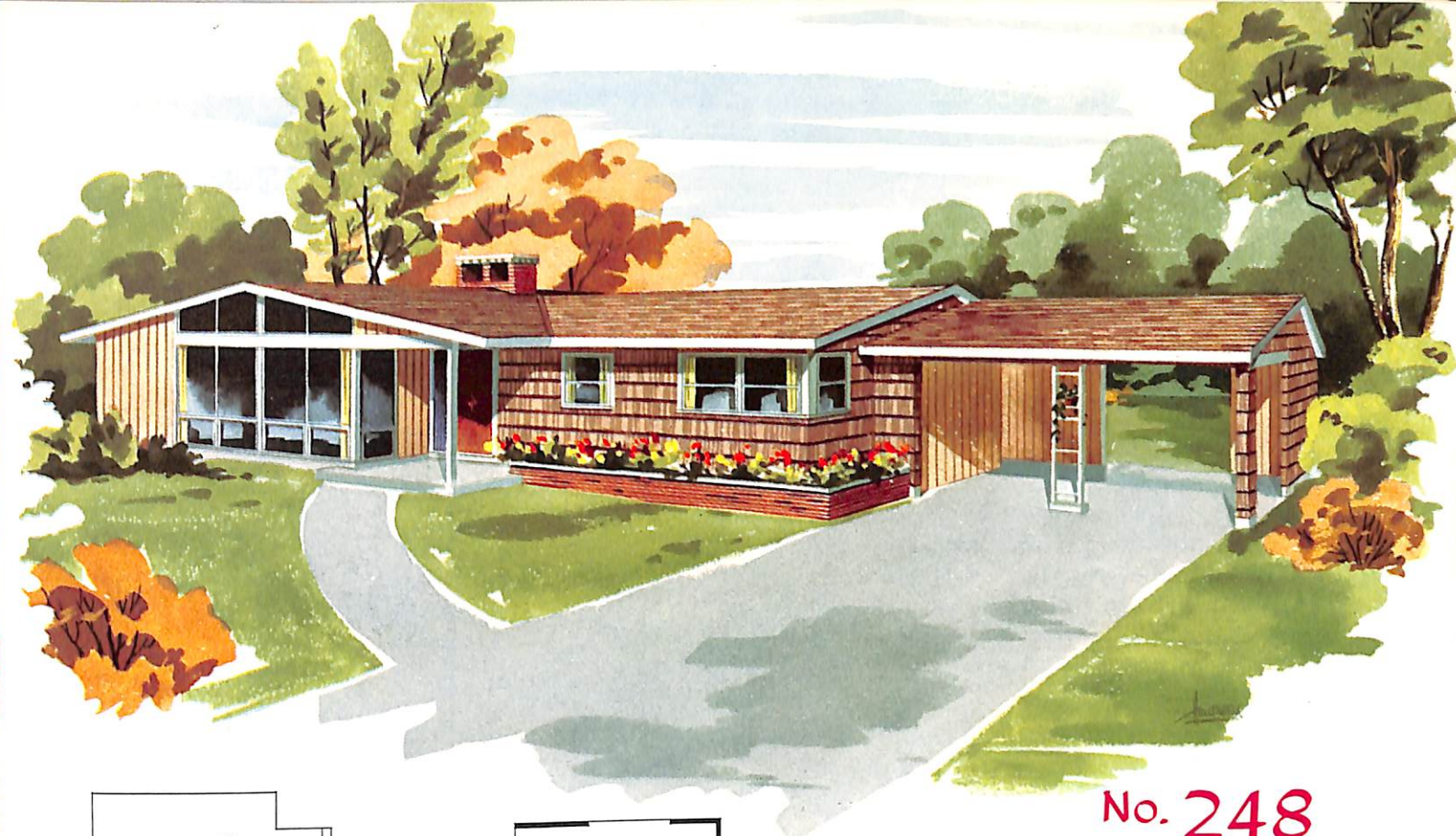
Living Area  
Plan 1 — 1,079 sq. ft.  
Plan 2 — 1,129 sq. ft.



PLAN 1 WITH BASEMENT

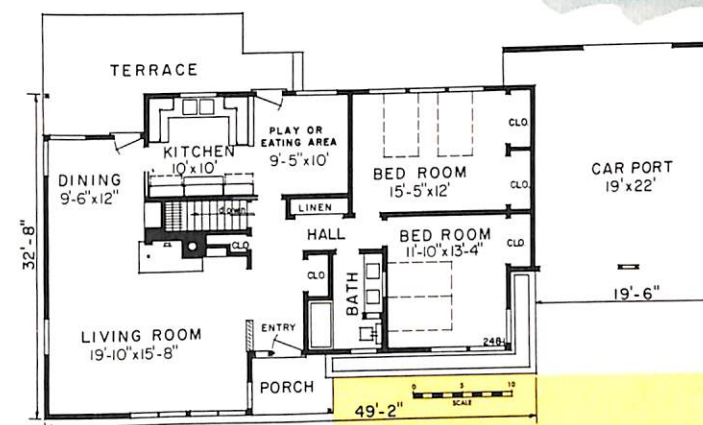


Living Room View



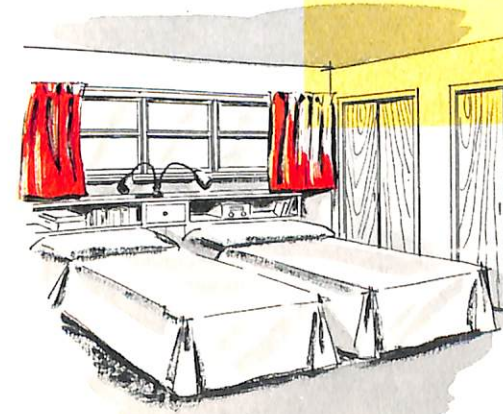
### an easy-living plan

A terrace accessible from the dining, kitchen and play areas, the open living plan and an unusually efficient traffic pattern are outstanding features of this modern trend home. Also notice the double vanity in bath, twin size bedrooms and large carport.

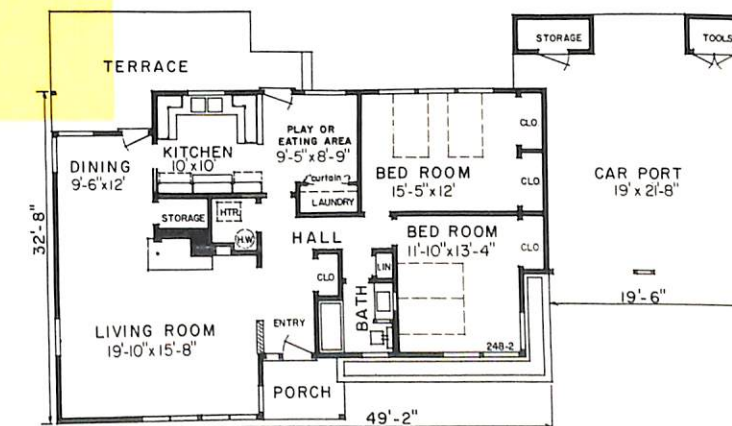


PLAN 1 WITH BASEMENT

Living Area  
Plan 1 or 2  
1,374 sq. ft.



Master Bedroom



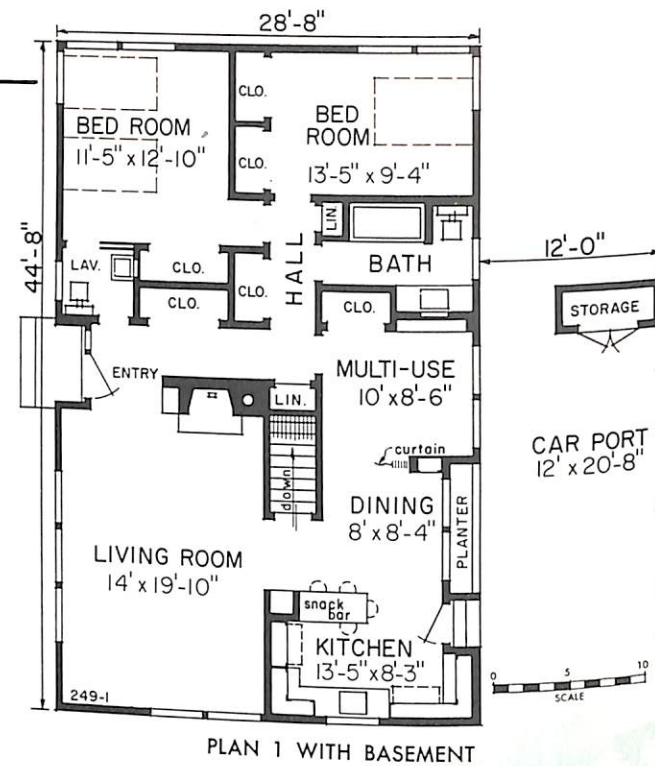
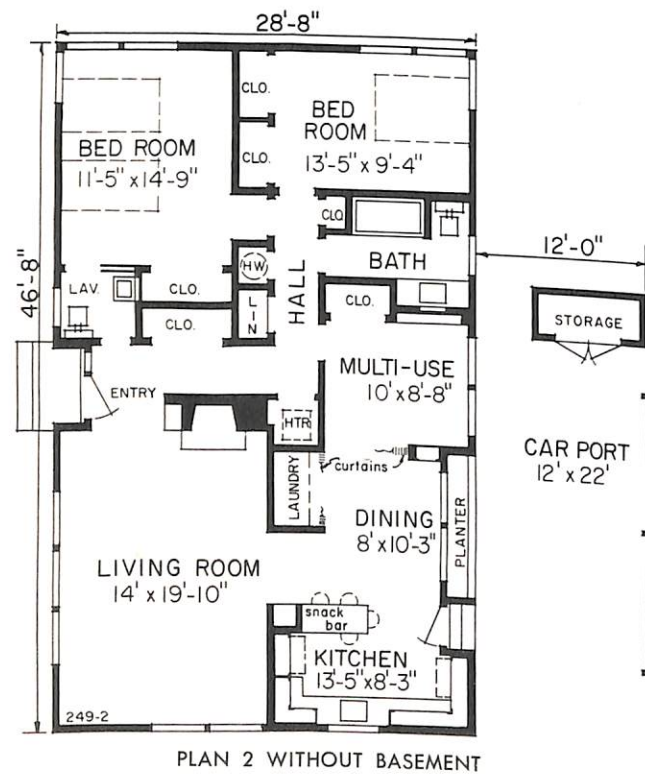
PLAN 2 WITHOUT BASEMENT



## A SELECT HOME

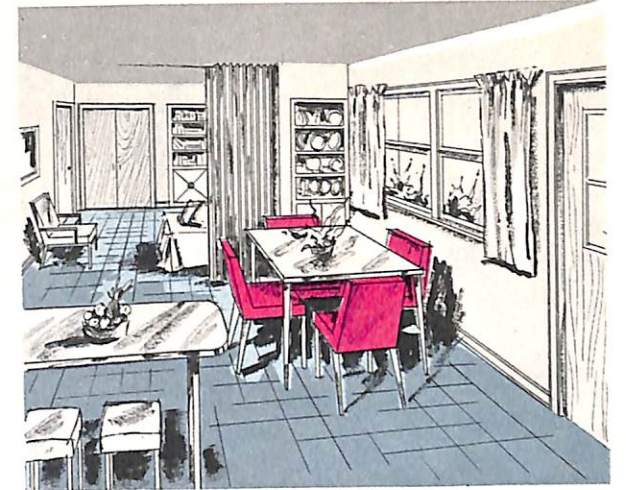
### adaptable for the narrow or corner lot

A modern exterior combined with an up-to-the-minute planned interior gives you this home you'll enjoy now and in the years ahead. A fireplace, snack bar, bath and a half, multi-use room and carport with storage area provide the extra comfort and convenience you desire.

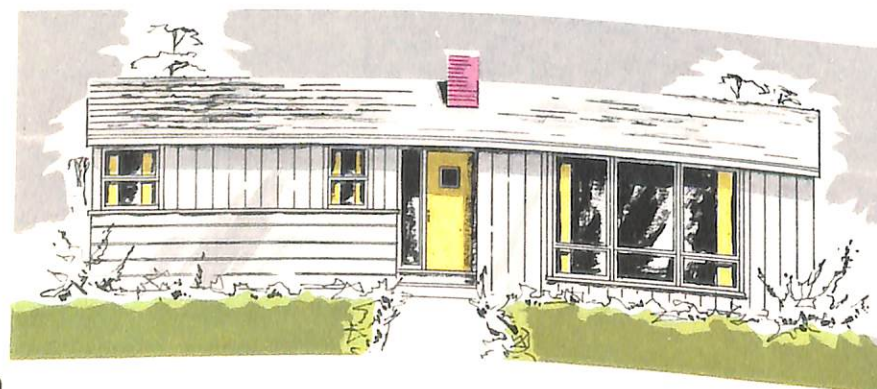


See us for blueprint plans of all homes illustrated in this book. Plans are available either as shown or in reverse position.

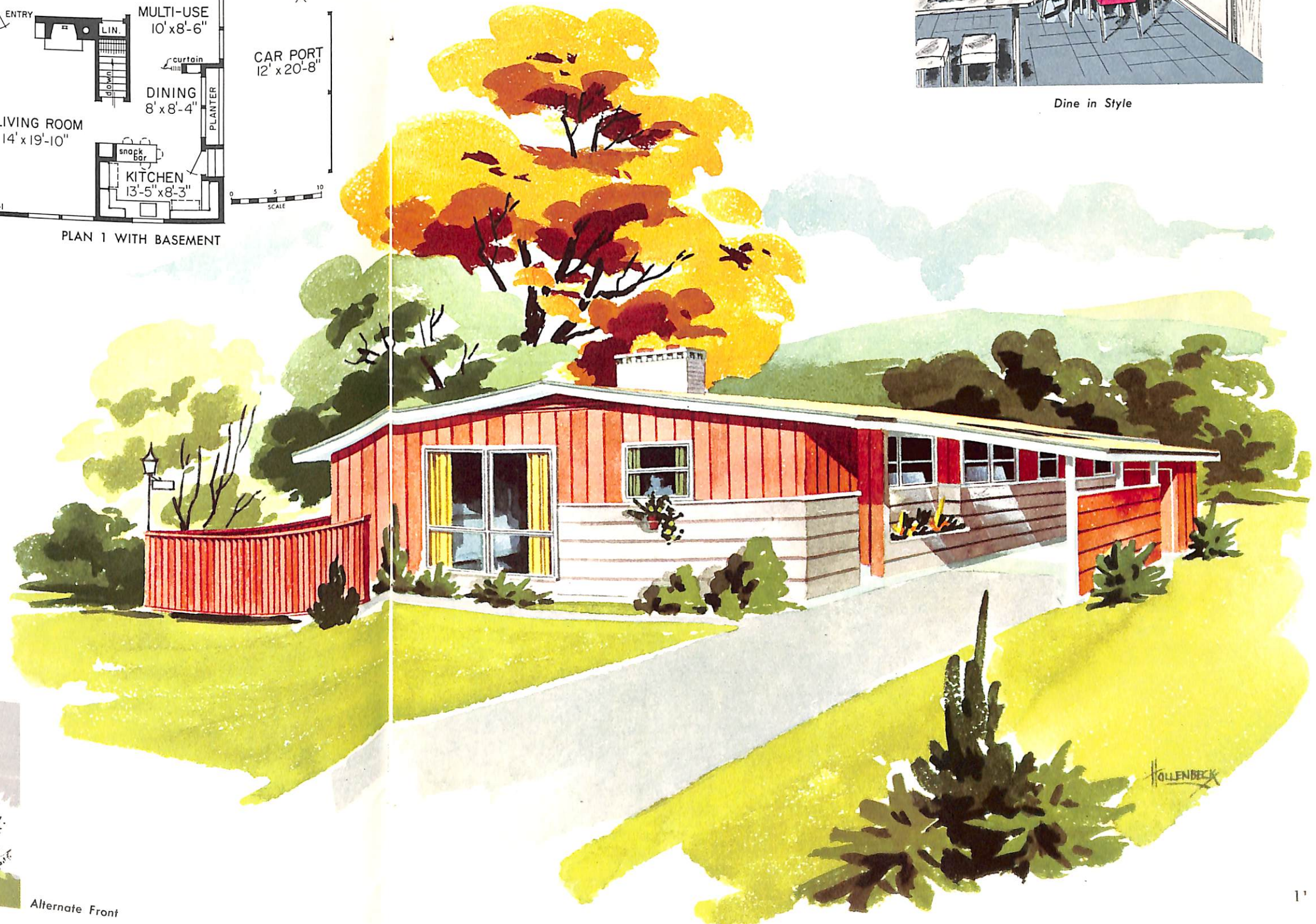
Living Area  
Plan 1 — 1,253 sq. ft.  
Plan 2 — 1,310 sq. ft.



Dine in Style



Alternate Front





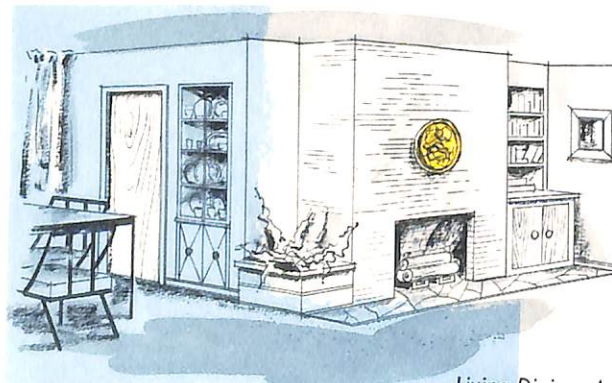


No. 250

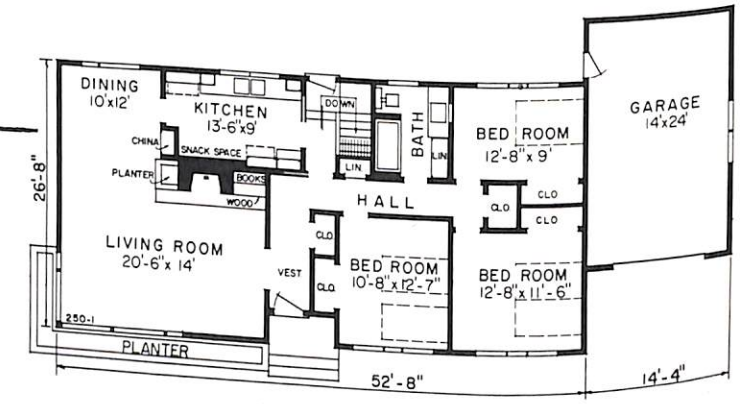
A SELECT HOME

planned for efficiency

Luxurious living is provided by this easy-to-care-for home. The illustration below is an example of the features that make this home so comfortable to live in.

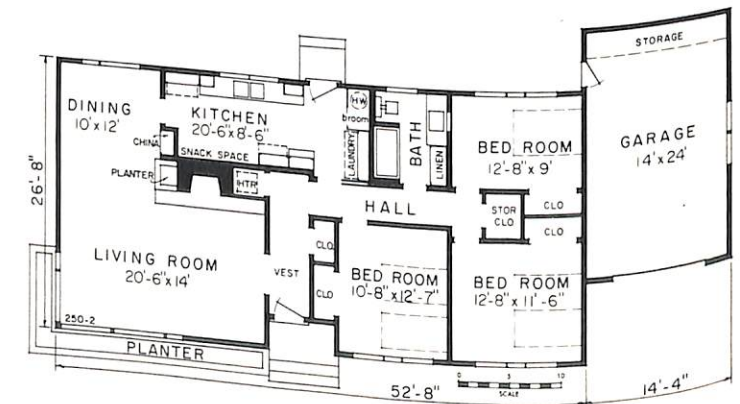


Living-Dining Area Features

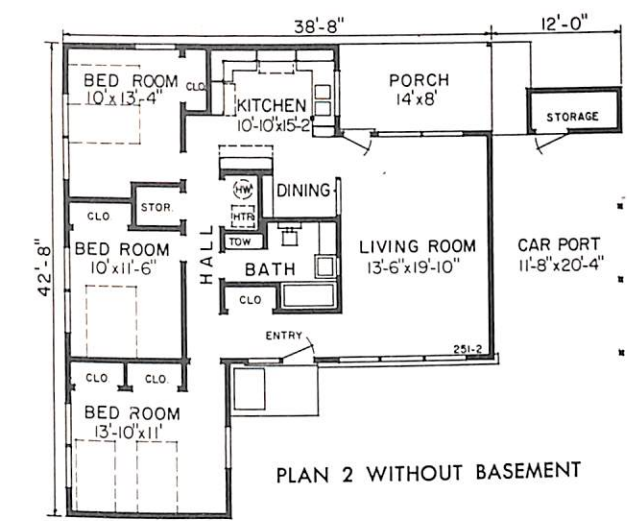


PLAN 1 WITH BASEMENT

Living Area  
Plan 1 or 2 — 1,384 sq. ft.

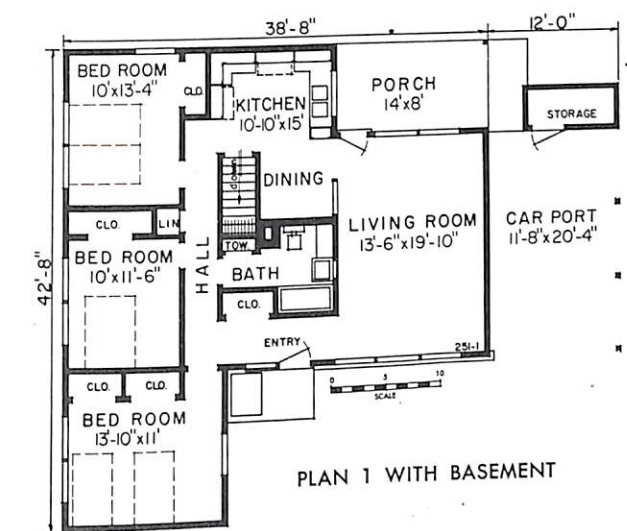


PLAN 2 WITHOUT BASEMENT

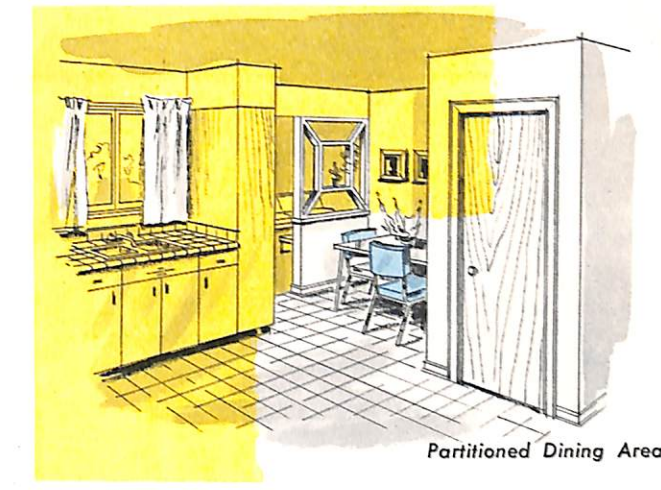


PLAN 2 WITHOUT BASEMENT

Living Area  
Plan 1 or 2  
1,202 sq. ft.



PLAN 1 WITH BASEMENT



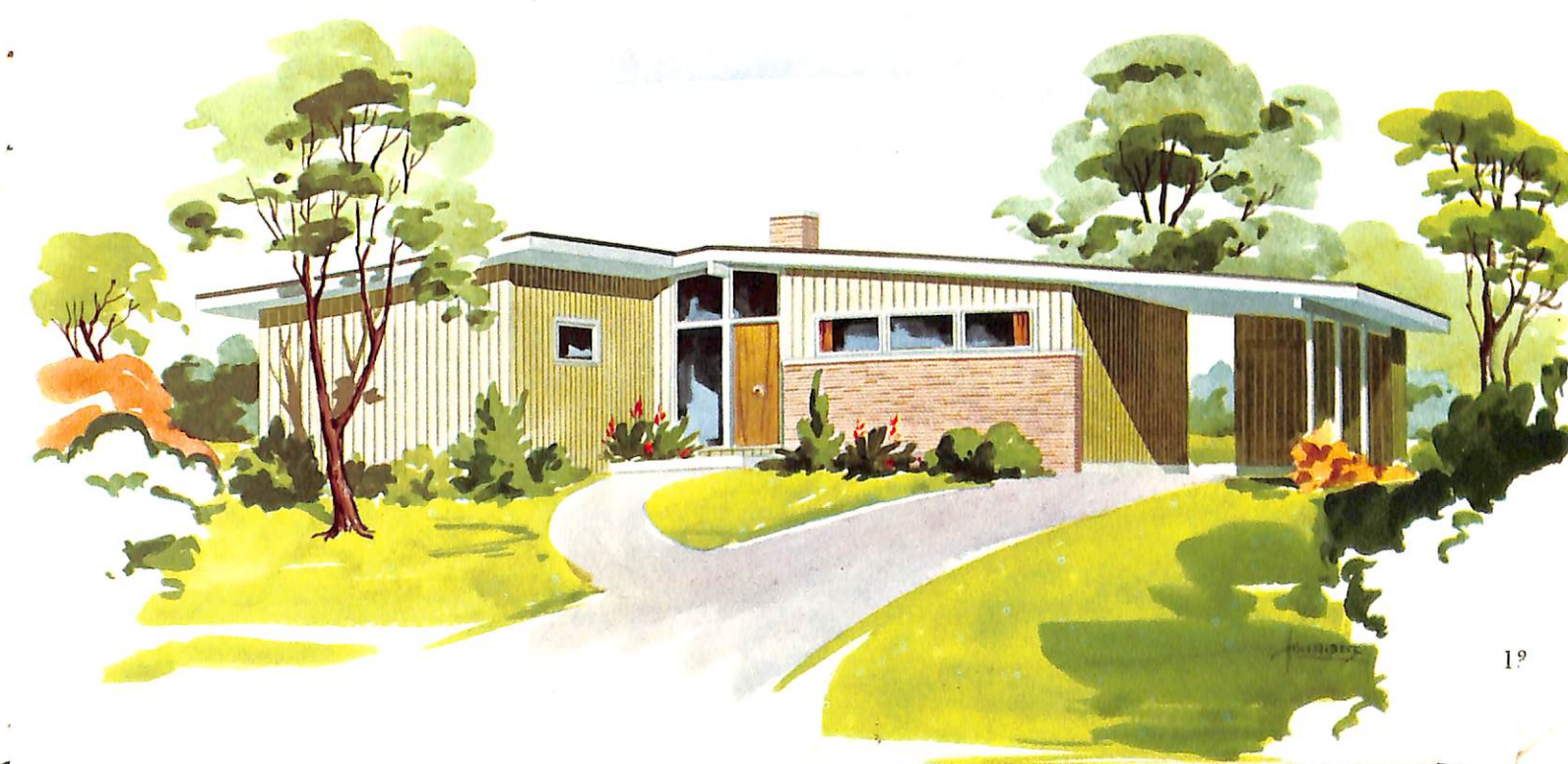
Partitioned Dining Area

No. 251

A SELECT HOME

modern exterior,  
compact plan

A central hall serving every room in the plan assures a compact and easily maintained home. The use of shoulder high windows at the front of the garden view living room achieve the privacy so often desired.



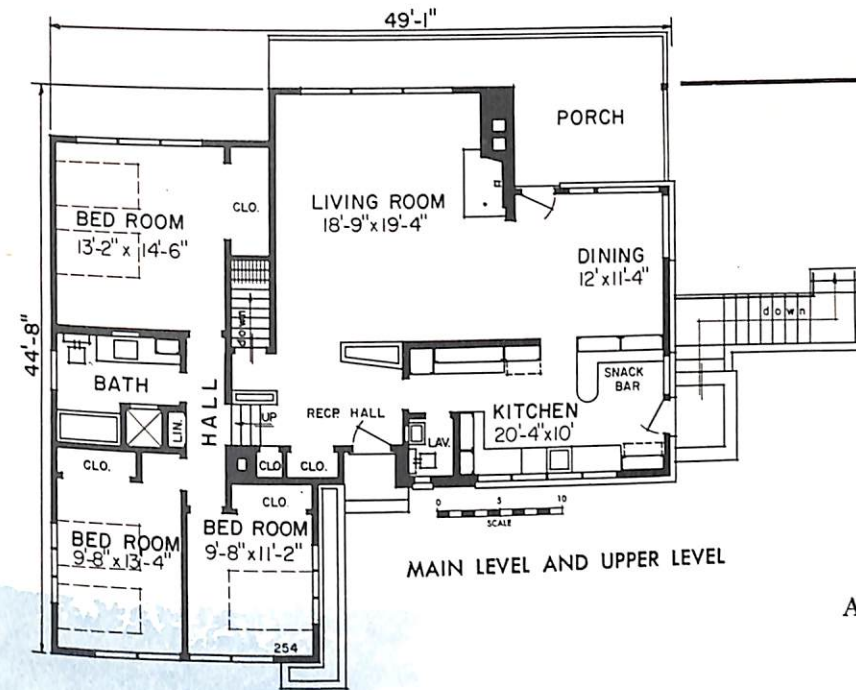
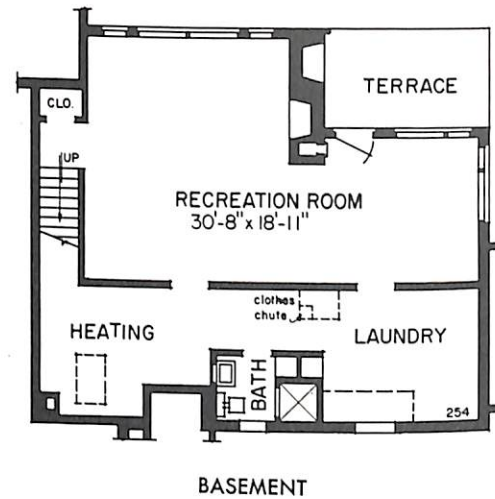


live and play in this  
tri-level hillside home

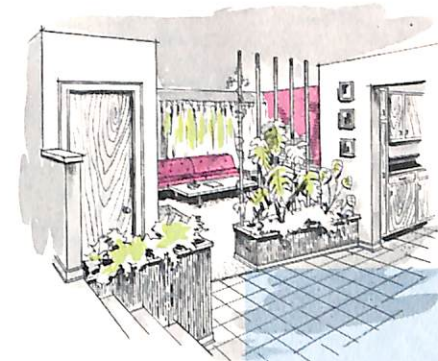


Daylight Basement Recreation Room

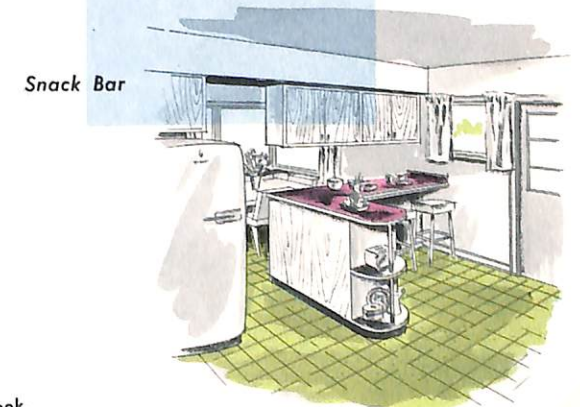
Living Area  
1,458 sq. ft.



A close survey of the illustrations and floor plans will give you a complete picture of the many living advantages provided in this home. Of special interest is the garden view living-dining area and large porch on the main level. For your leisure living, a terrace and recreation room is included in the daylight basement. Both terrace and playroom feature a fireplace.



Planters and Trellis



Snack Bar

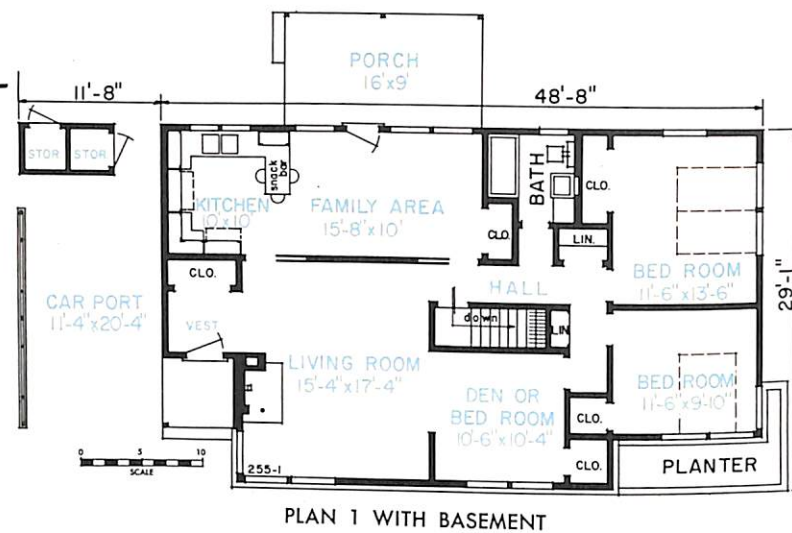
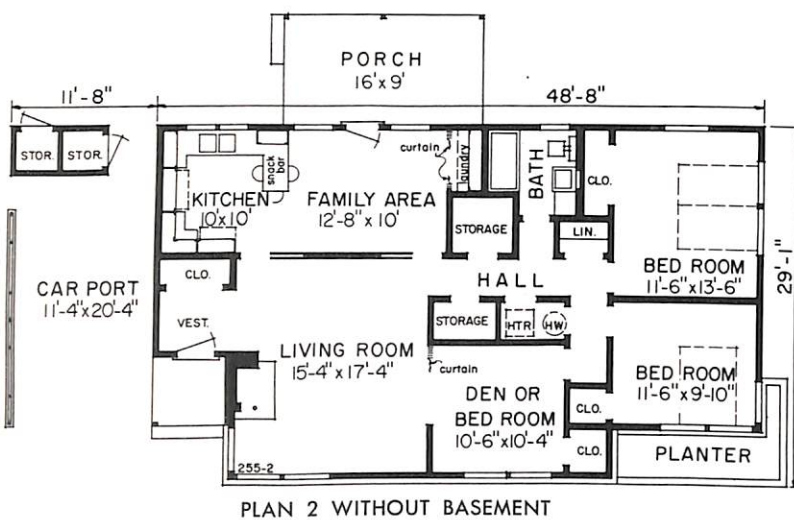
See us for blueprint plans of all homes illustrated in this book.  
Plans are available either as shown or in reverse position.



## A SELECT HOME

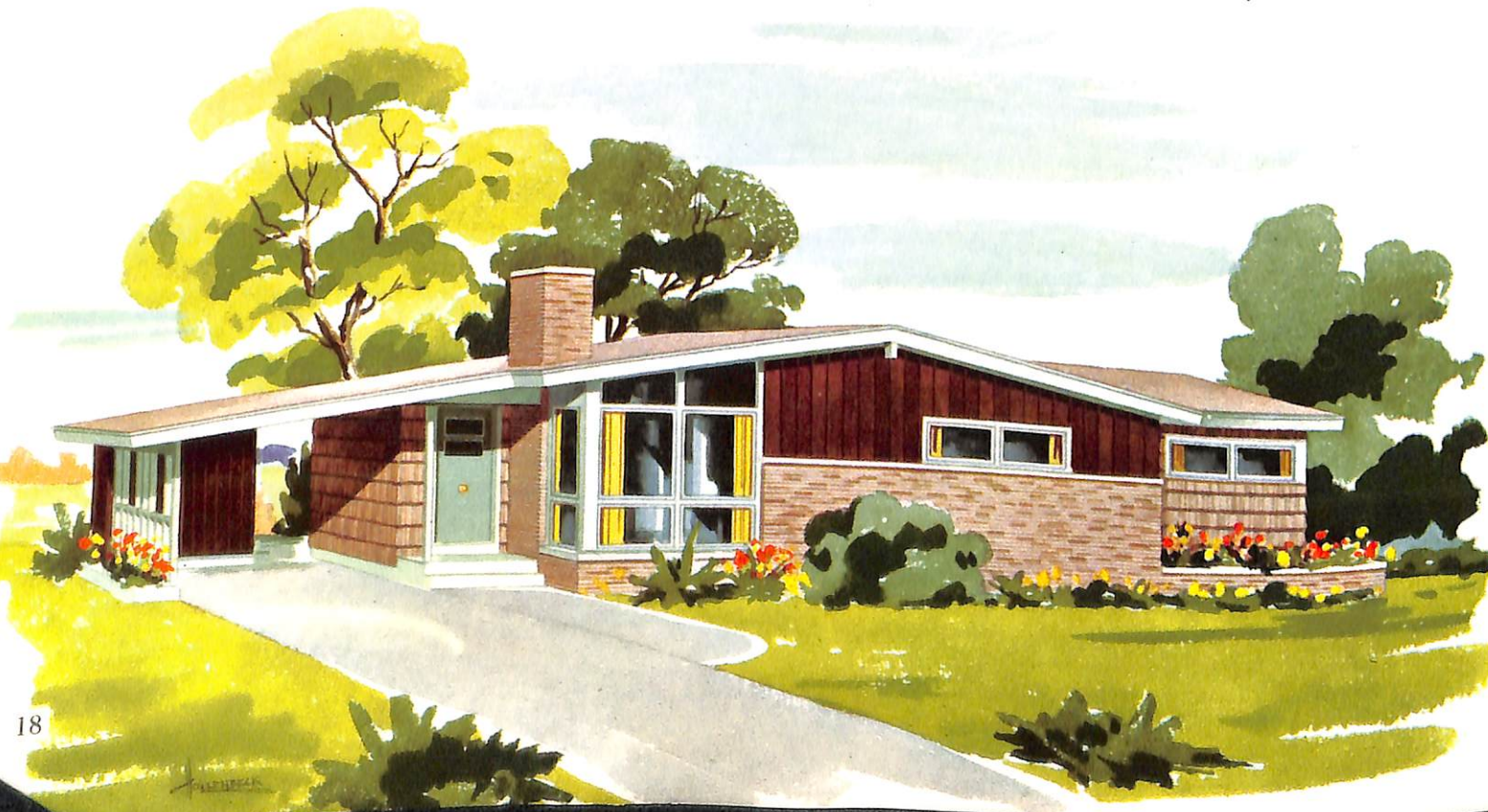
### contemporary ranch

Here's a home you've always wanted . . . with the long, low look and a floor plan to meet your family's needs. A large family area and kitchen, ideal as a get-together-spot or for informal entertaining, is a feature many appreciate.



Family Area Room

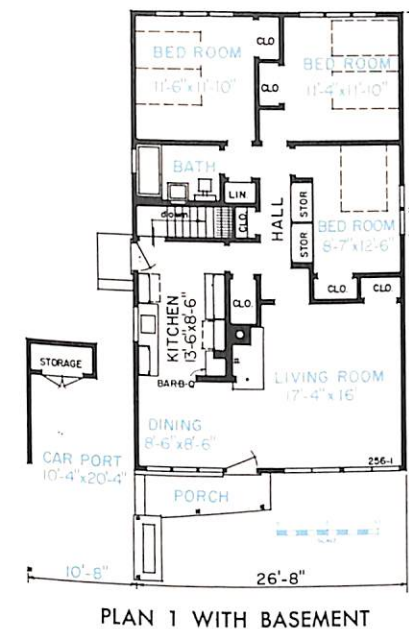
Living Area  
Plan 1 or 2 — 1,304 sq. ft.



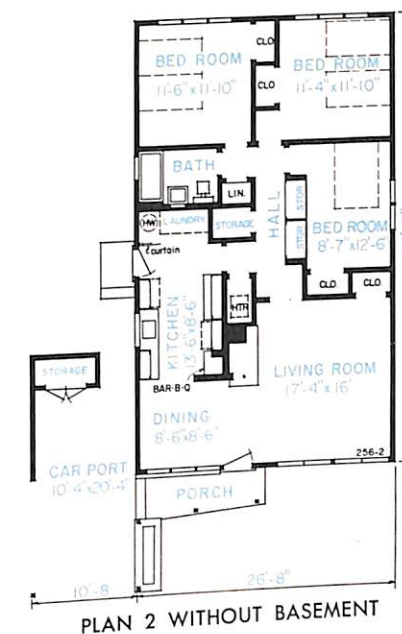
## A SELECT HOME

### ideal for a narrow lot

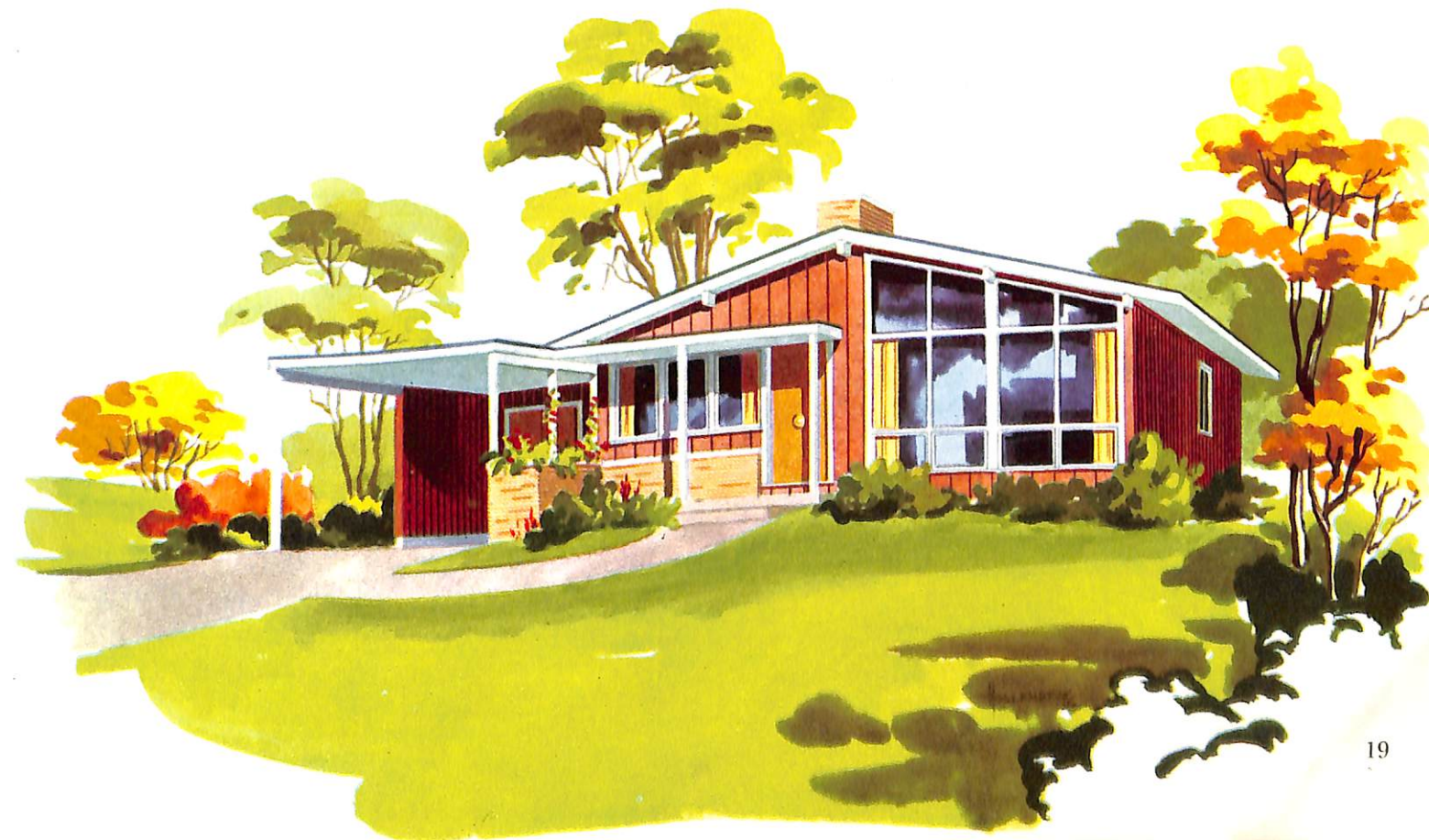
Floor-to-roof windows not only "light condition" the living room of this home, but also add to the attractiveness of the exterior. Other features you'll appreciate are the barbecue in the kitchen, abundance of closet space and the open carport that can double as a patio.



Living Area  
Plan 1 or 2 — 1,191 sq. ft.



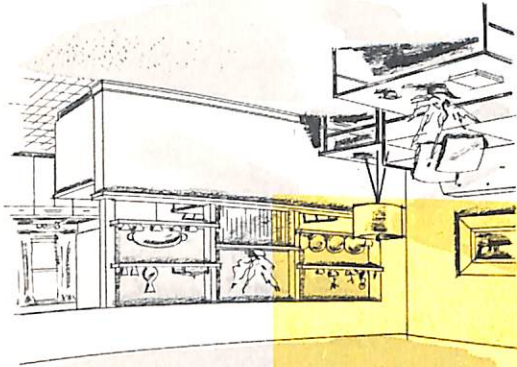
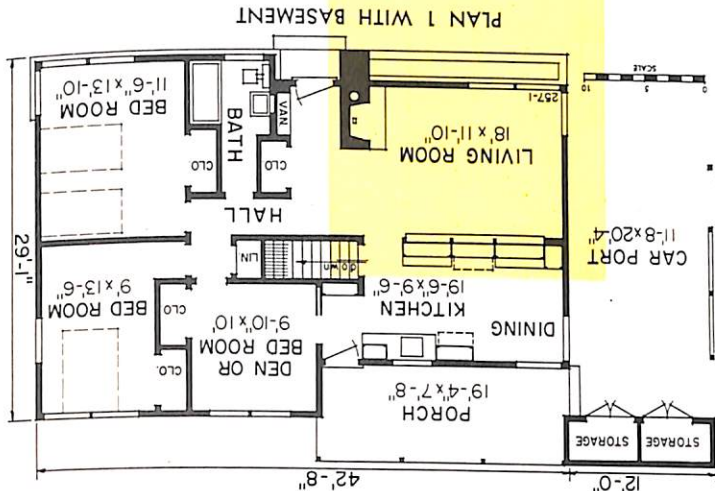
See us for blueprint plans of all homes illustrated in this book. Plans are available either as shown or in reverse position.





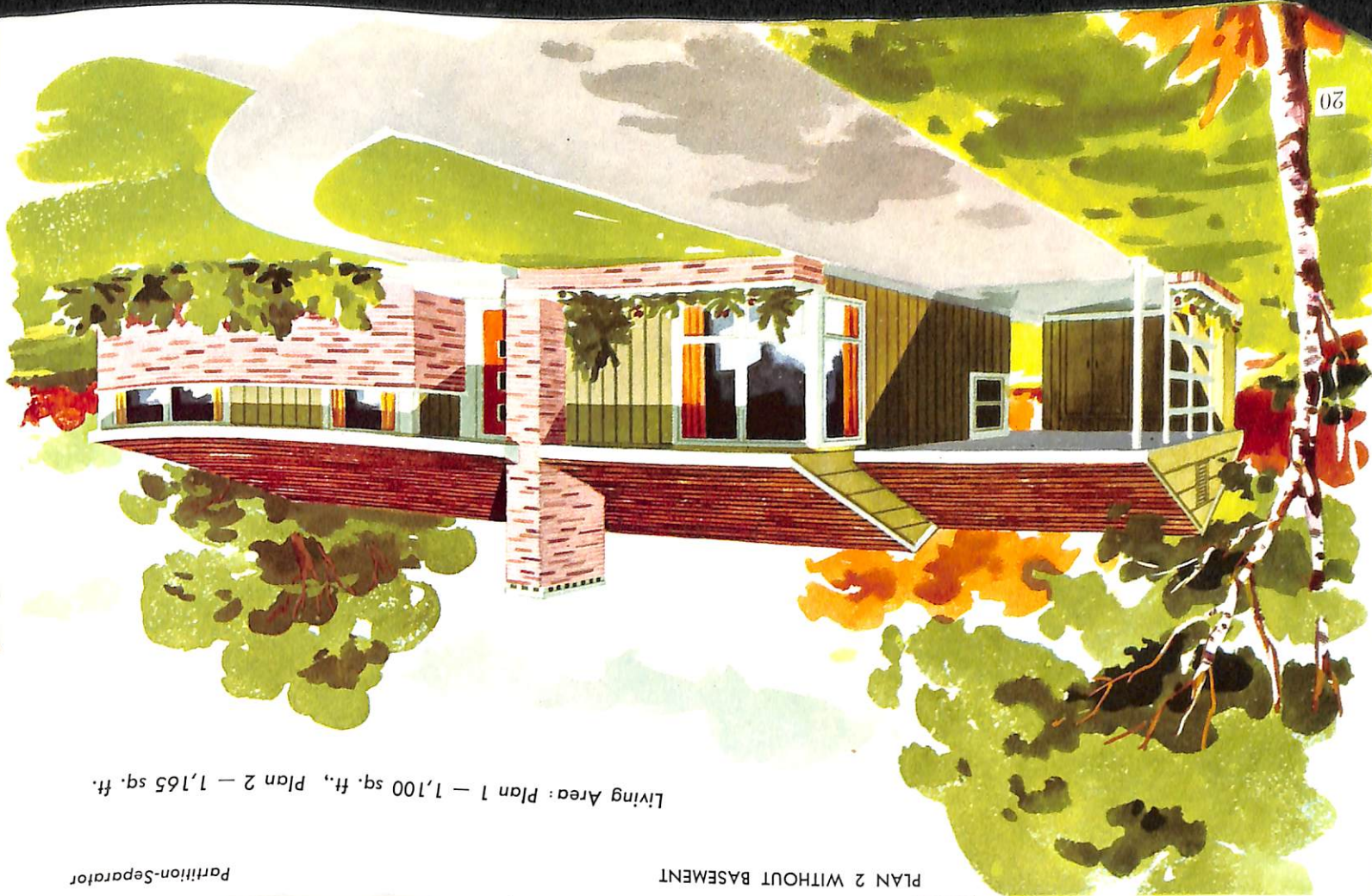
# compact and comfortable

A well-ordered arrangement of living area assures you a lifetime of comfort in this home. The partition separator between living room and kitchen as illustrated below is an example of today's better planning.



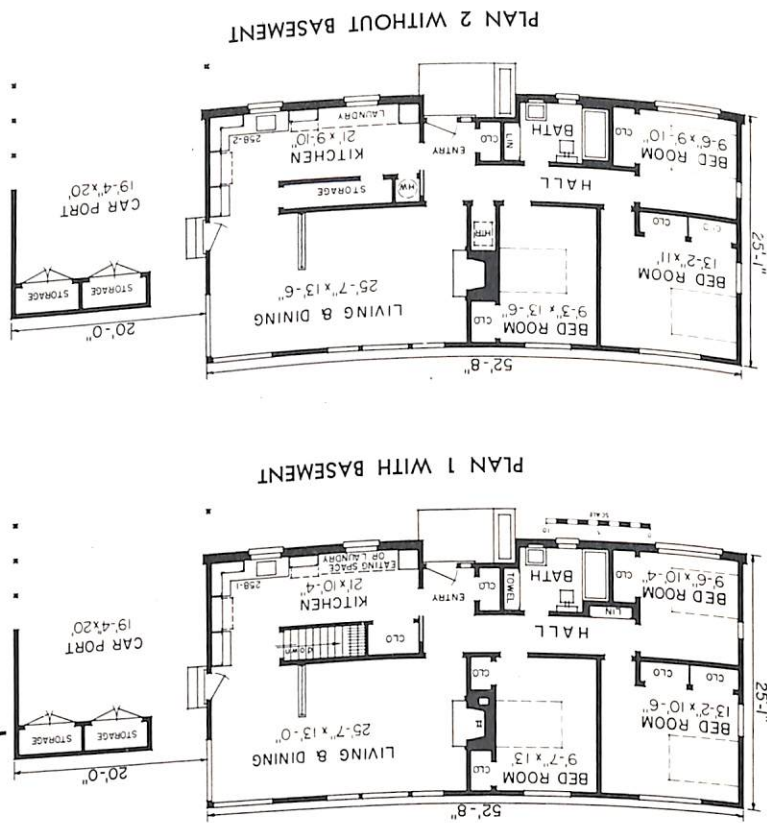
Partition-Separator

Living Area: Plan 1 — 1,100 sq. ft., Plan 2 — 1,165 sq. ft.



Blueprint plans are available for all homes illustrated, either as shown or in reverse position. See us for your plans.

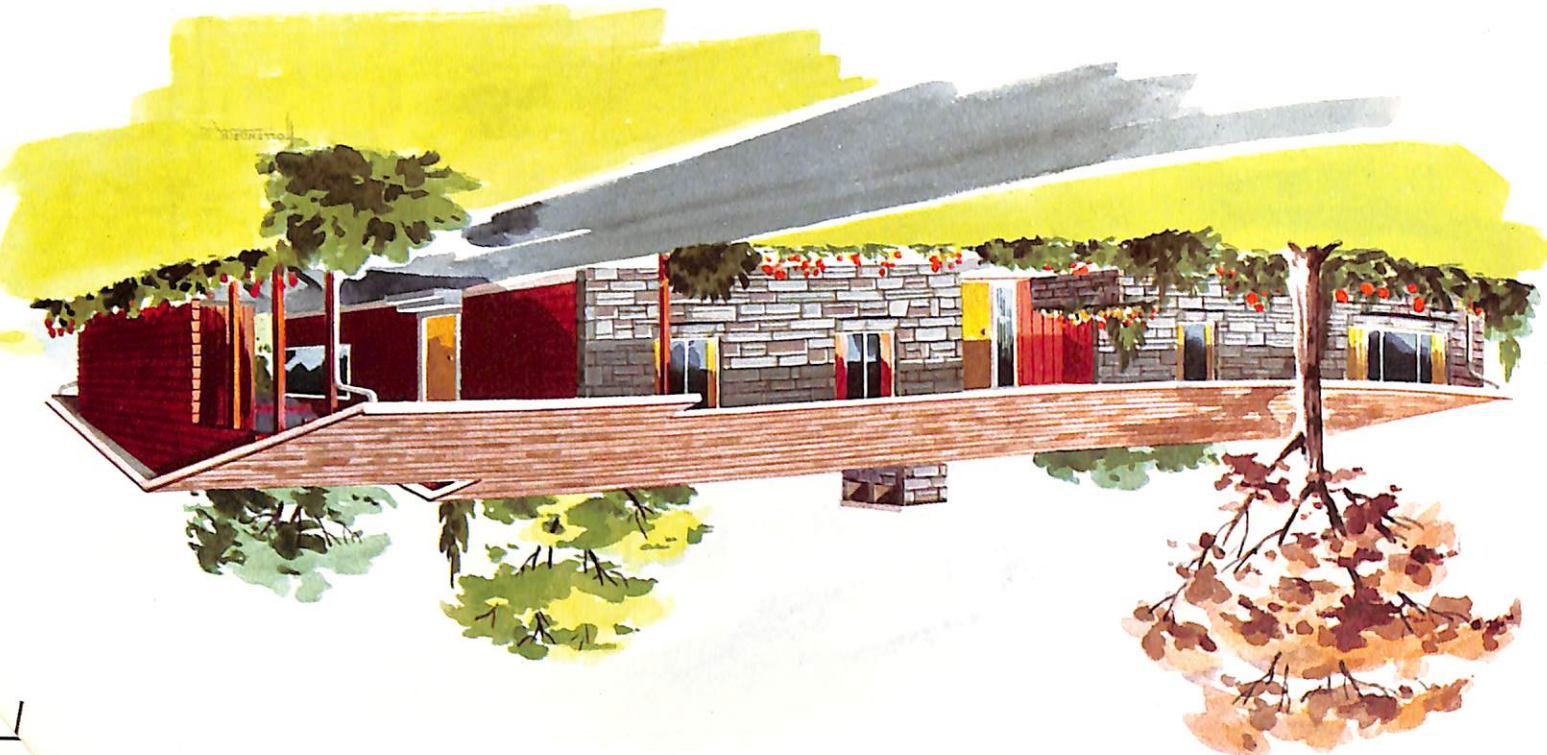
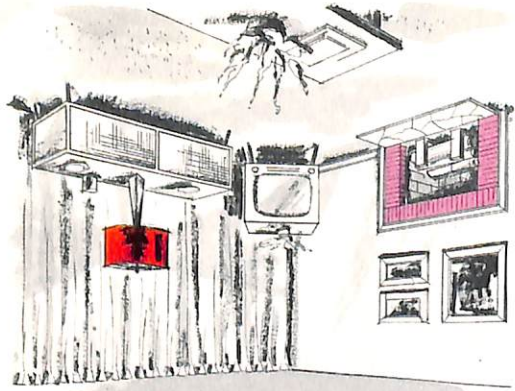
Living Area  
Plan 1 or 2 — 1,279 sq. ft.



# ranch styling in masonry and wood

Low slung lines and smart exterior give you a home that is modern and attractive. The garden view living-dining area and first floor laundry are leading features of this plan.

View of Living Room



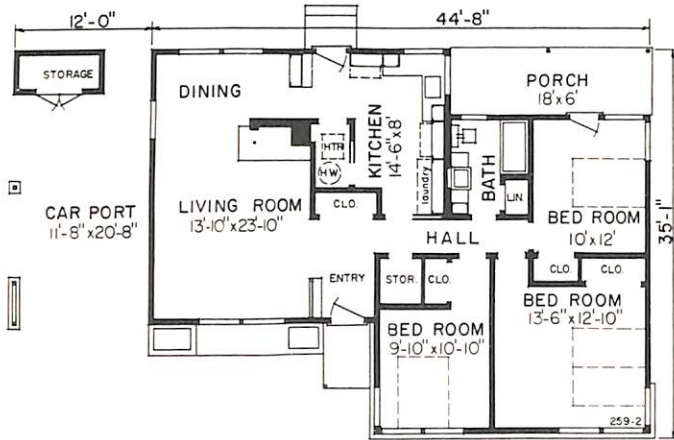


## A SELECT HOME

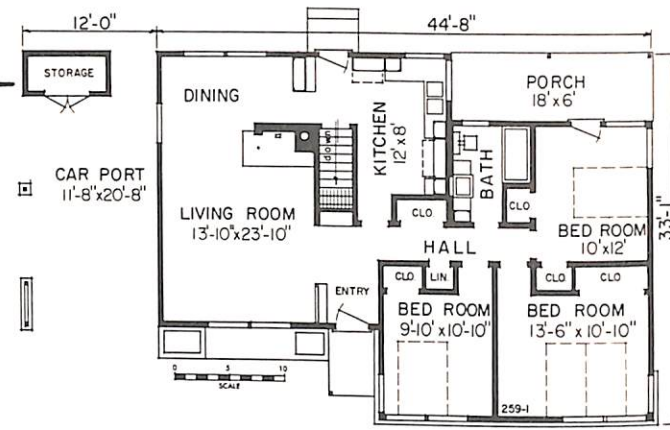
### distinctive and charming

This design is strongly modern in feeling with its use of vertical siding and masonry on the exterior. Complementing the comfort-planned interior is a large porch, an ideal lounging spot which can be screened for summer living.

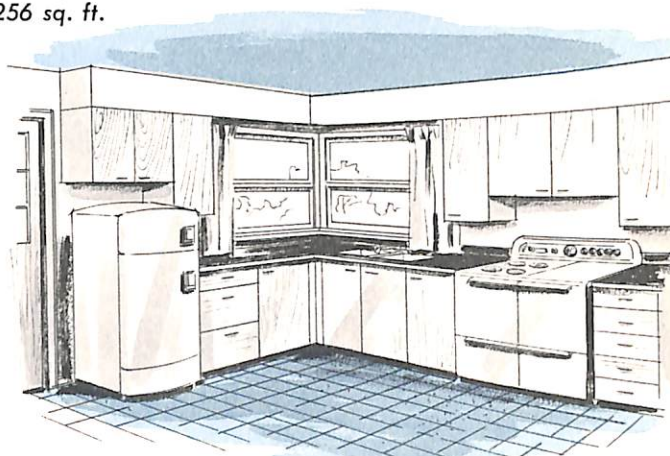
Living Area  
Plan 1 — 1,206 sq. ft.  
Plan 2 — 1,256 sq. ft.



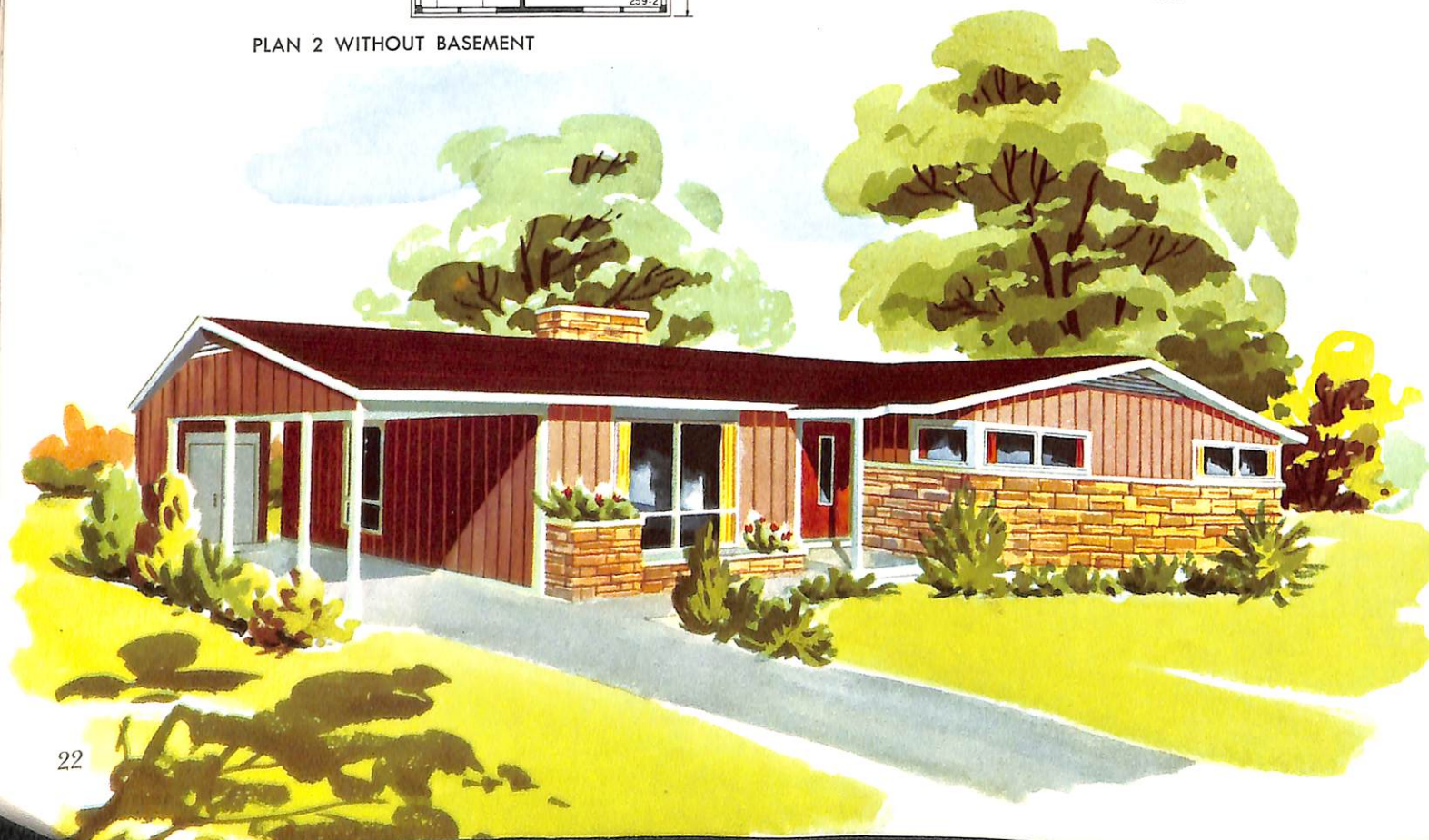
PLAN 2 WITHOUT BASEMENT



PLAN 1 WITH BASEMENT



Step-Saver Kitchen

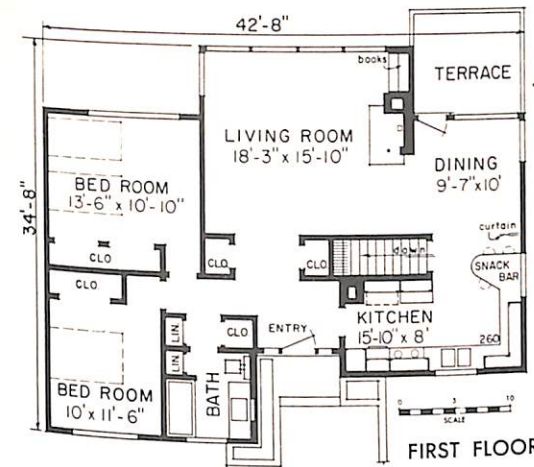


## A SELECT HOME

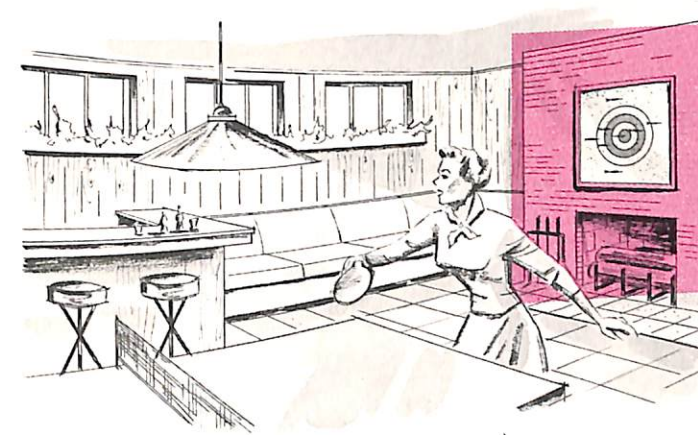
### a sloping site plan

This modern home offers today's homemaker the ultimate in pleasant living. Both indoor and outdoor recreation is provided by the terrace, adjacent to the garden view living-dining area on the main level, and the play area located in the basement.

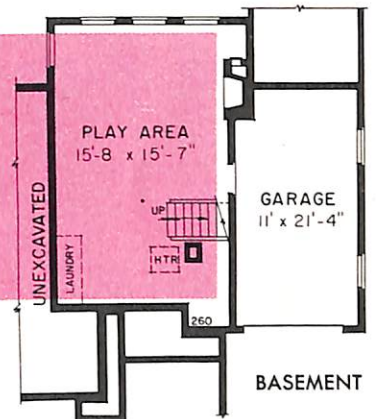
Living Area  
1,176 sq. ft.



FIRST FLOOR



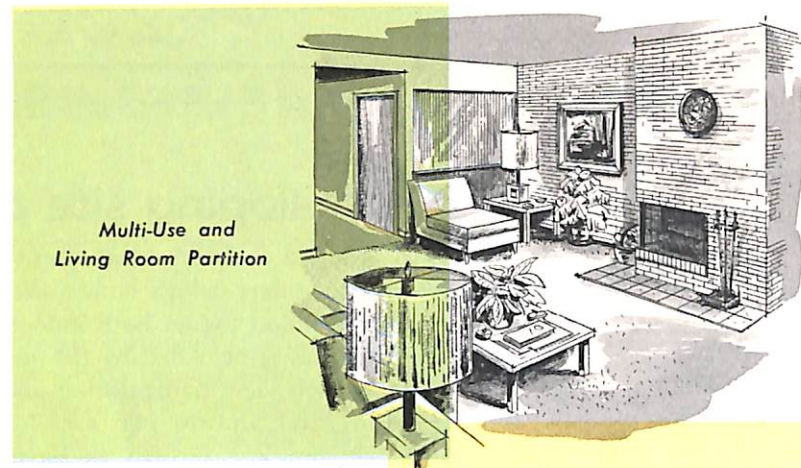
Basement Play Room



BASEMENT



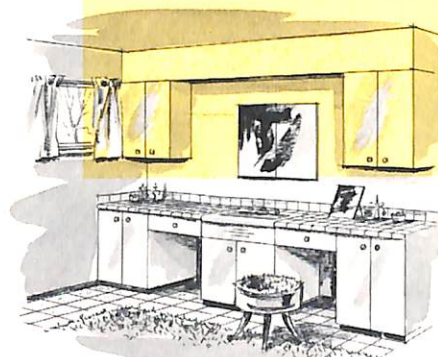




Multi-Use and  
Living Room Partition



Porch Entrance



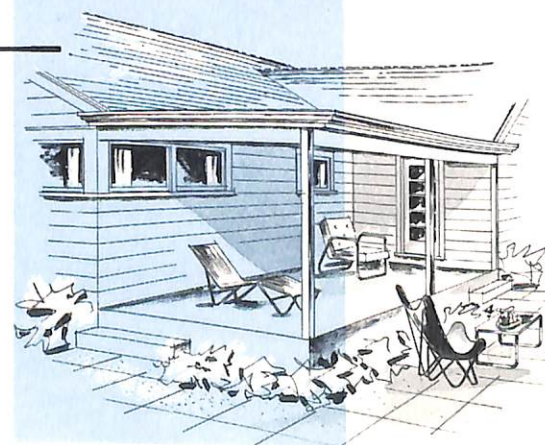
Vanity in Bath

No. 261

## A SELECT HOME

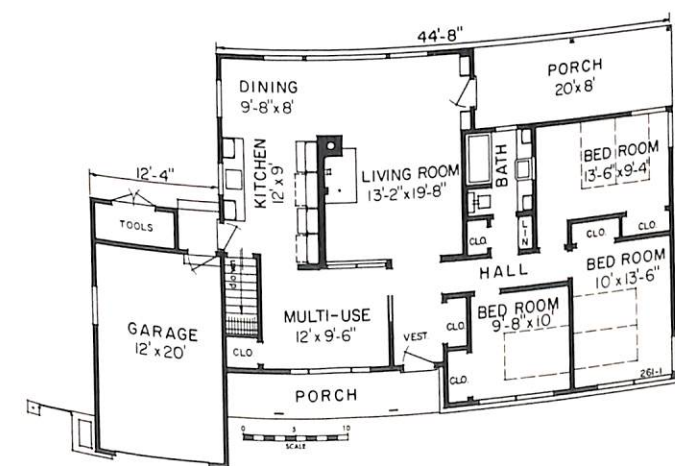
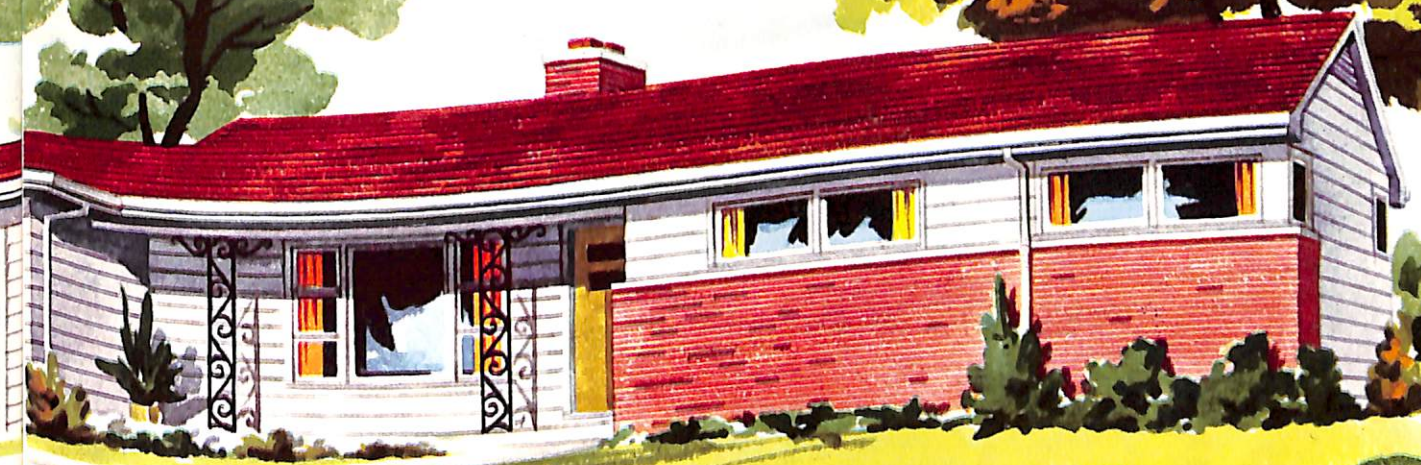
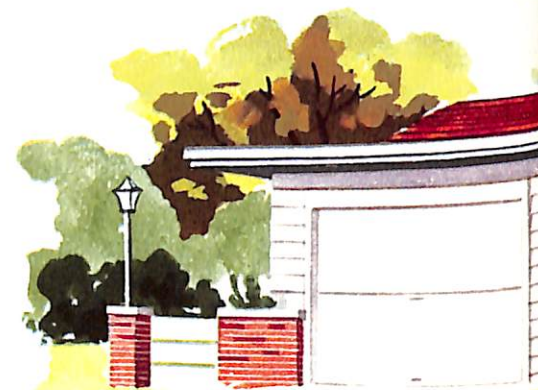
easy to look at ...  
wonderful to live in

Individual in design, this home provides a wide range of deluxe appointments as illustrated on this page. From the grouping of the bedrooms, through the expanse of the living area and out onto the porch, no facility for your comfort and convenience has been overlooked.

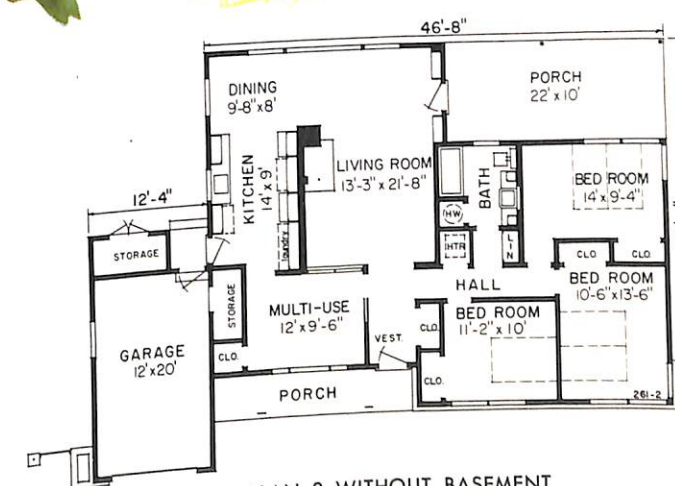


View of Porch

Living Area  
Plan 1 — 1,286 sq. ft.  
Plan 2 — 1,388 sq. ft.

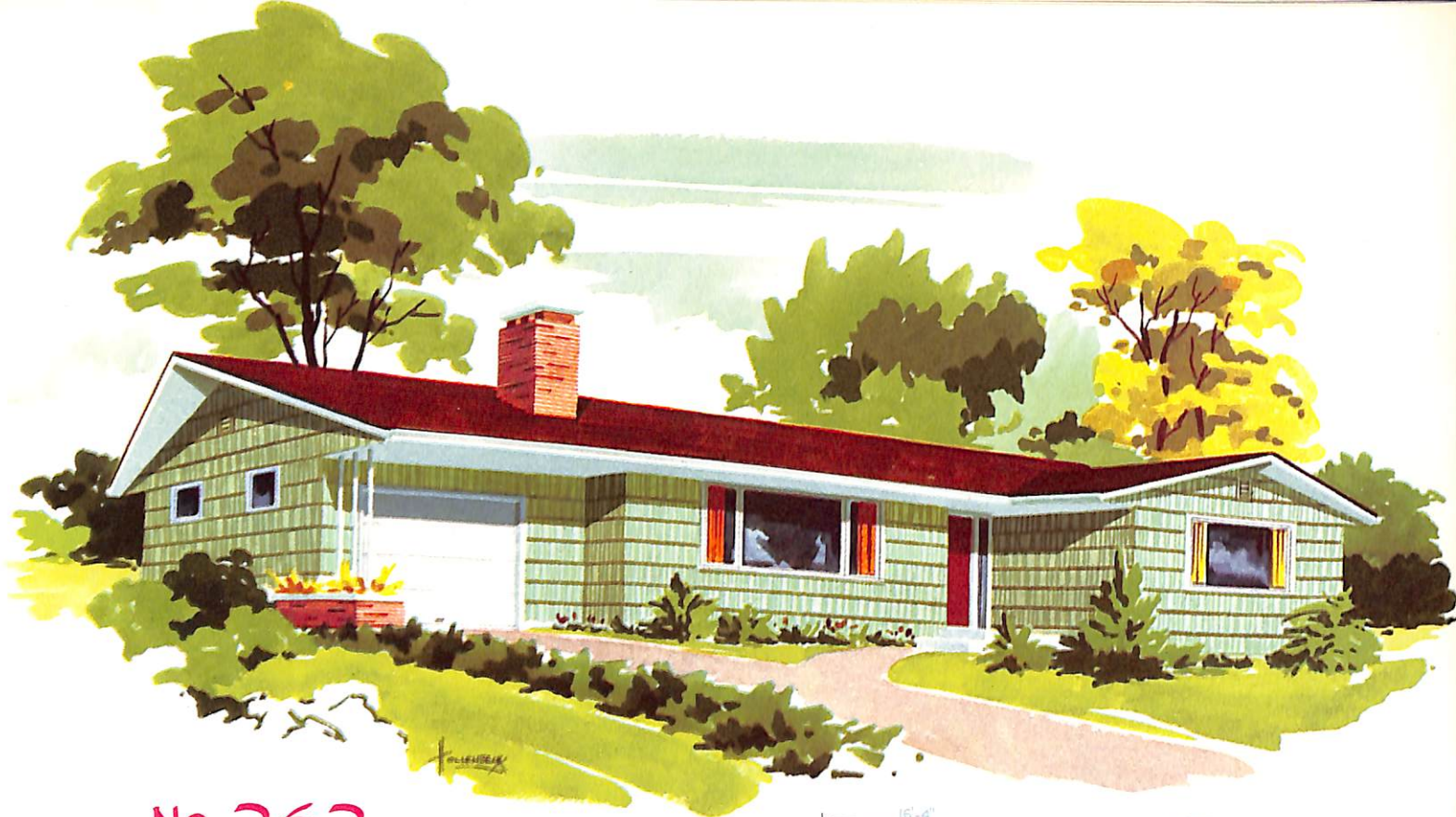


PLAN 1 WITH BASEMENT



PLAN 2 WITHOUT BASEMENT





No. 262

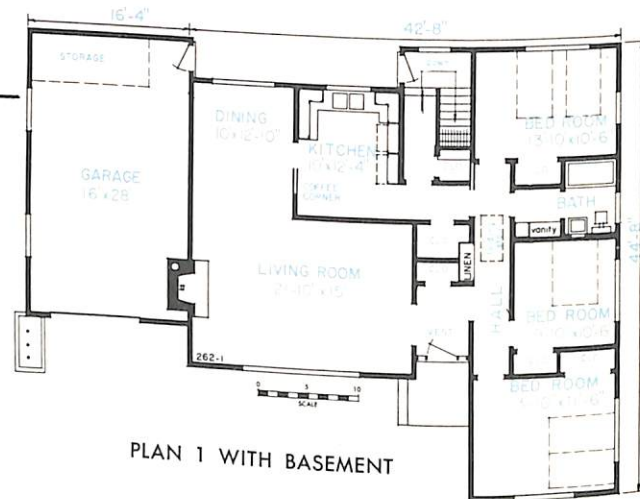
### A SELECT HOME

There's room aplenty for all the family in this three bedroom plan. Paneled wall and fireplace in the large living-dining area create a rich background as illustrated below. Shingled walls, planter and trellis at garage and wide overhang of the roof add a look of freshness and individuality to the exterior.

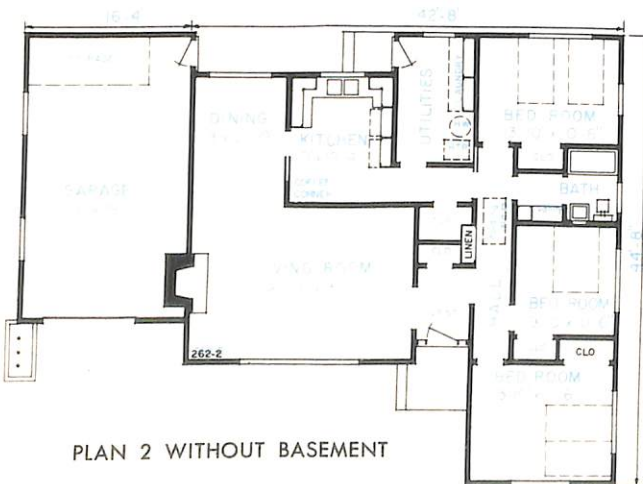
#### Living Area

Plan 1 — 1,475 sq. ft.

Plan 2 — 1,479 sq. ft.



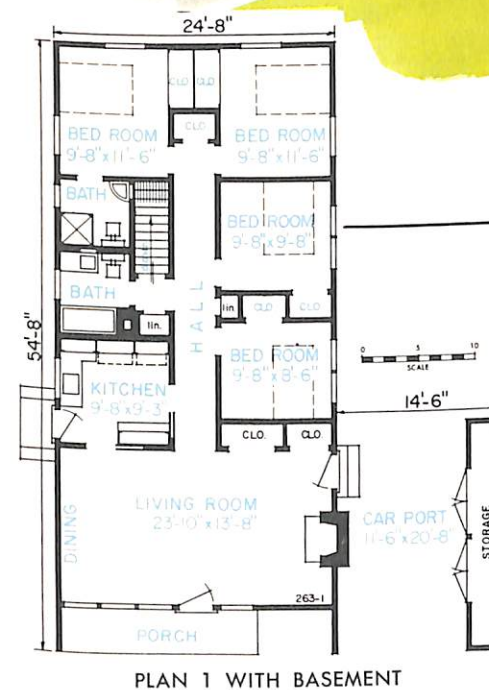
Paneled Wall and Fireplace in Living Room



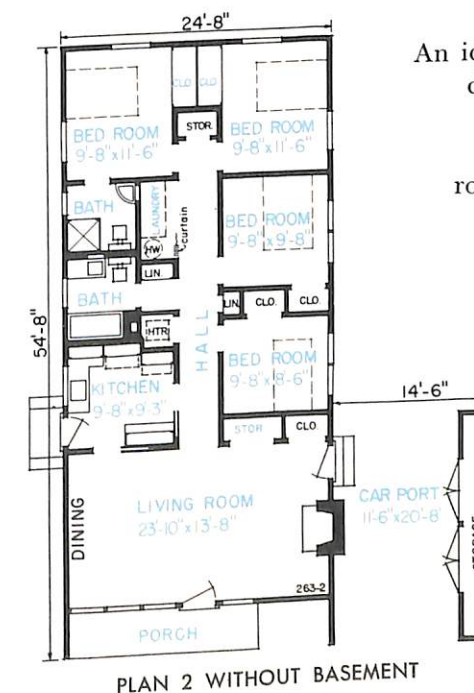
No. 263

### A SELECT HOME

An ideal plan for the large family, this design includes four bedrooms and two baths. Other attractive features are the window wall in the living room and the storage area included in the carport.



See us for blueprint plans of all homes illustrated in this book. Plans are available either as shown or in reverse position.

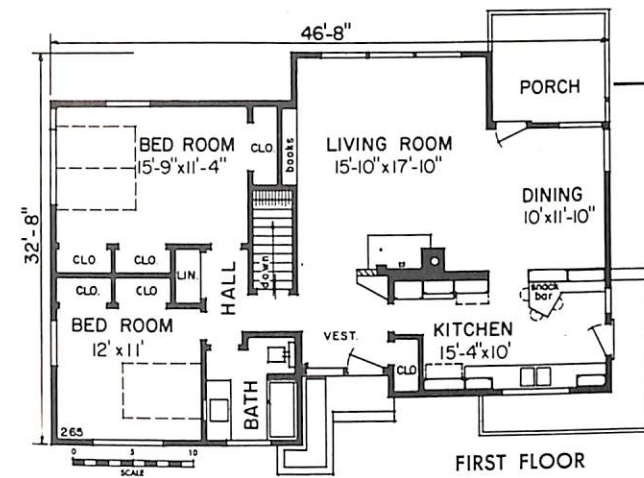


Living Area  
Plan 1 or 2 — 1,243 sq. ft.

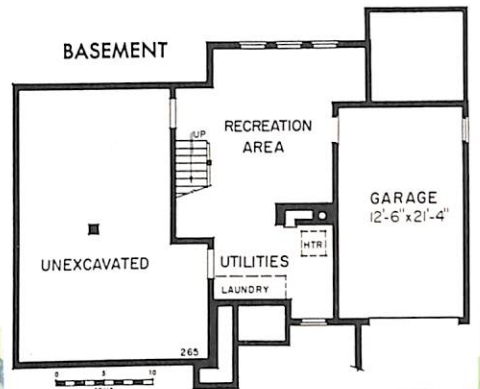


# plan for the small family

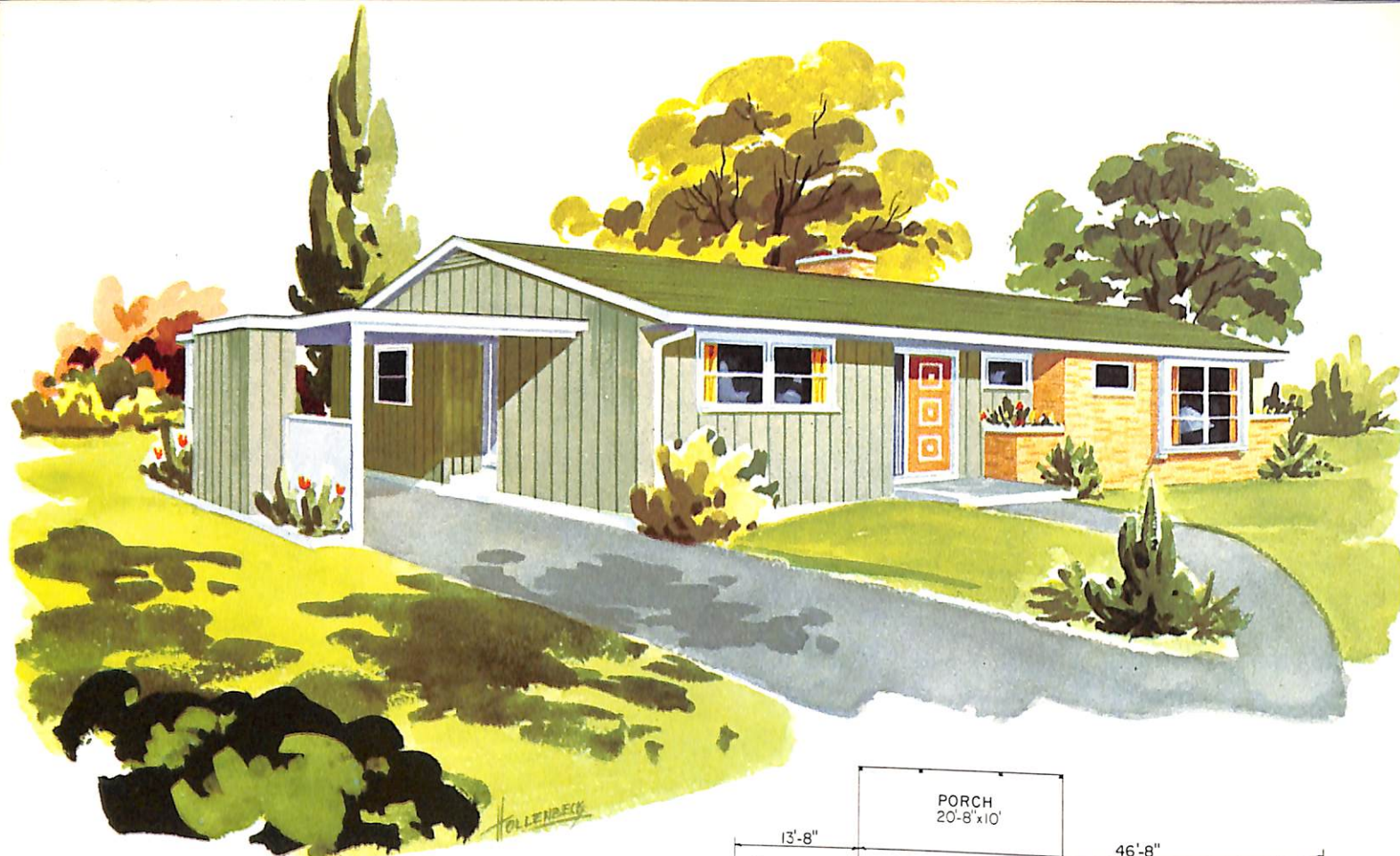
Offering many practical living advantages, this design includes a smart corner fireplace in the garden view living-dining room and a clever snack bar in the corridor type kitchen. Basement features a recreation room, utilities and garage.



Blueprint plans are available for all homes illustrated, either as shown or in reverse position. See us for your plans.

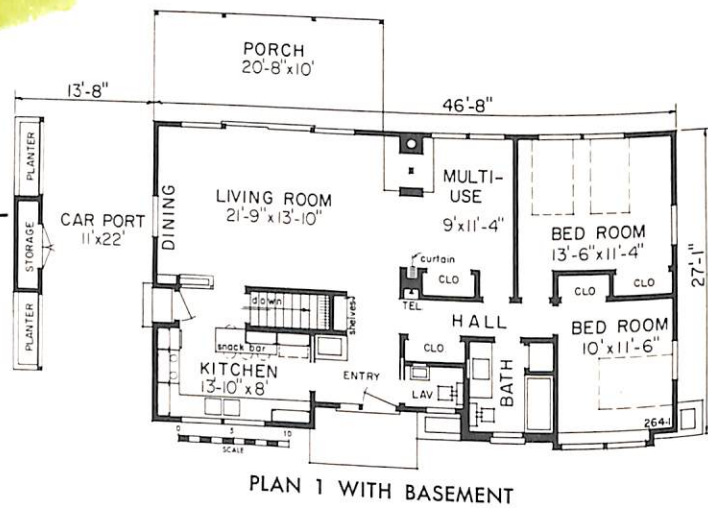


Living Area  
1,220 sq. ft.



# pleasant to live in

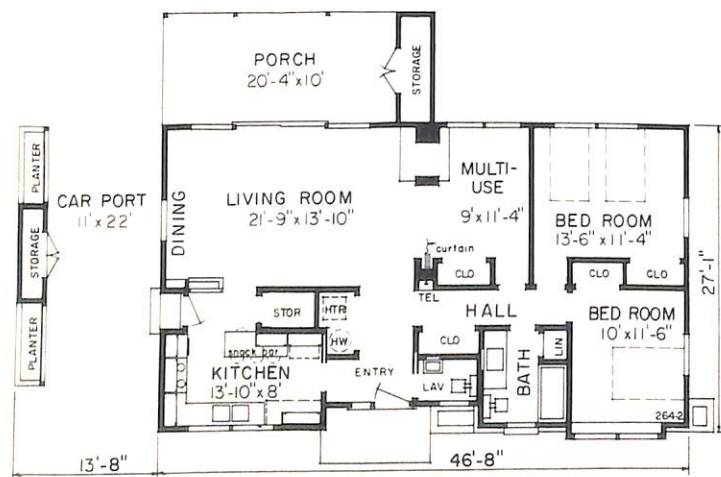
The large living-dining area and multi-use room flow together to give you a spacious, uninterrupted living area. If desired, a folding curtain can separate the multi-use area from living room. A modern fireplace serves both living and multi-use rooms.



Living Area  
Plan 1 or 2 — 1,227 sq. ft.



Porch View of Living Room



PLAN 2 WITHOUT BASEMENT

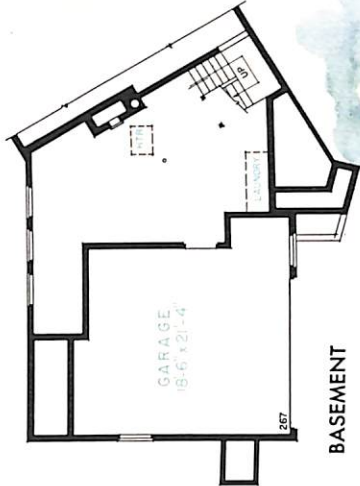
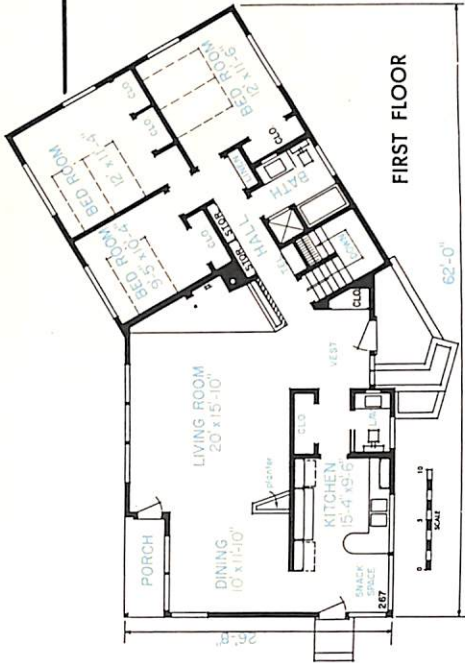


A SELECT HOME

practical, different

First of all, this unique plan gives you modern living features rarely found in any other home. Secondly, the angular shape gives you the advantage of better light and ventilation throughout the year. And finally, here is a home that is different in appearance and plan appeal.

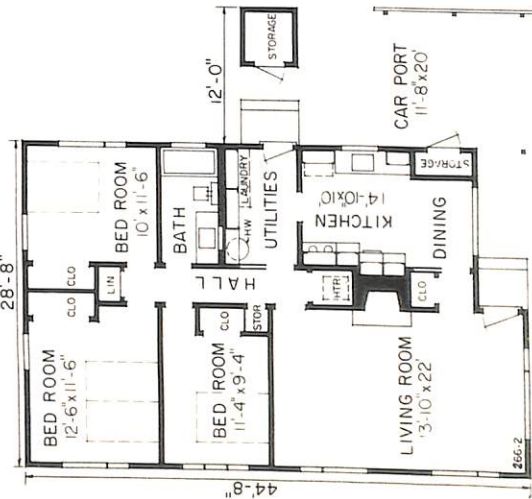
Living Area  
1,479 sq. ft.



A SELECT HOME

compact, contemporary

Low pitch gable roof, flat roof and vertical siding result in an exterior that is low and exciting. The floor plan, an example of orderly traffic arrangement, features three bedrooms, living room and kitchen-dining area.

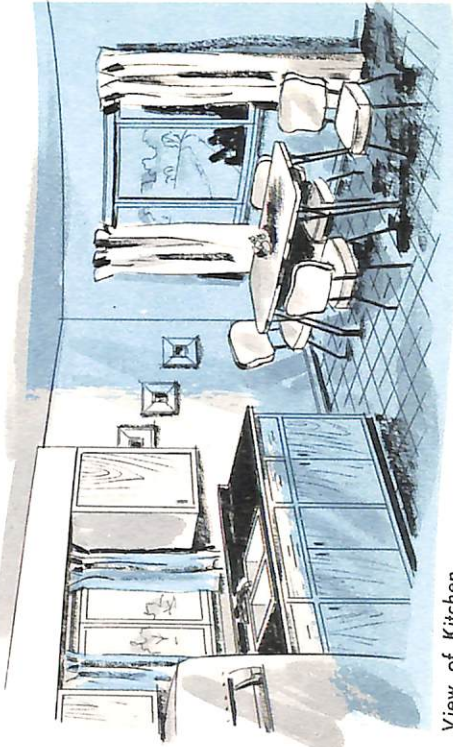


PLAN 2 WITHOUT BASEMENT



PLAN 1 WITH BASEMENT

Living Area  
Plan 1 or 2 — 1,173 sq. ft.

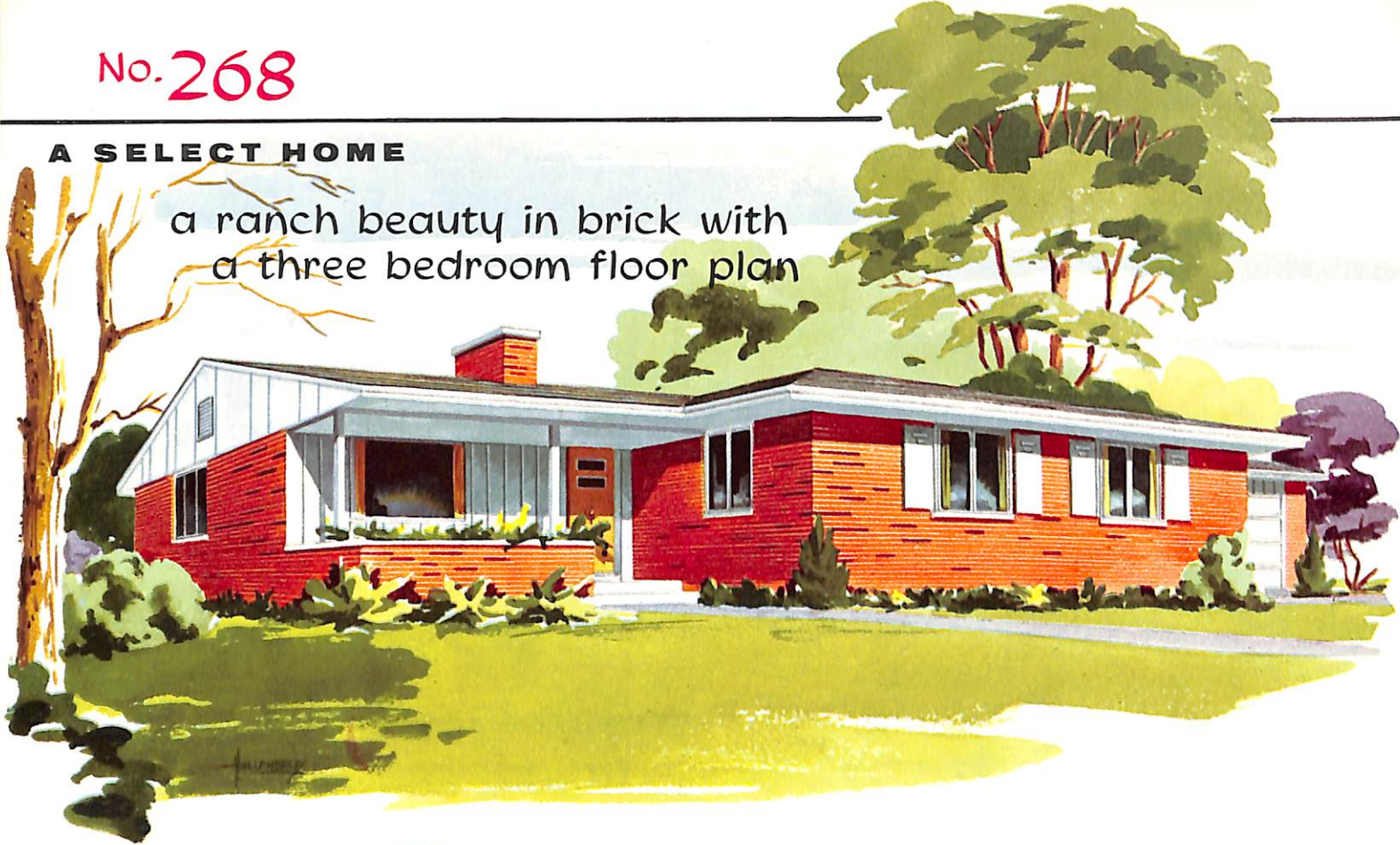


View of Kitchen



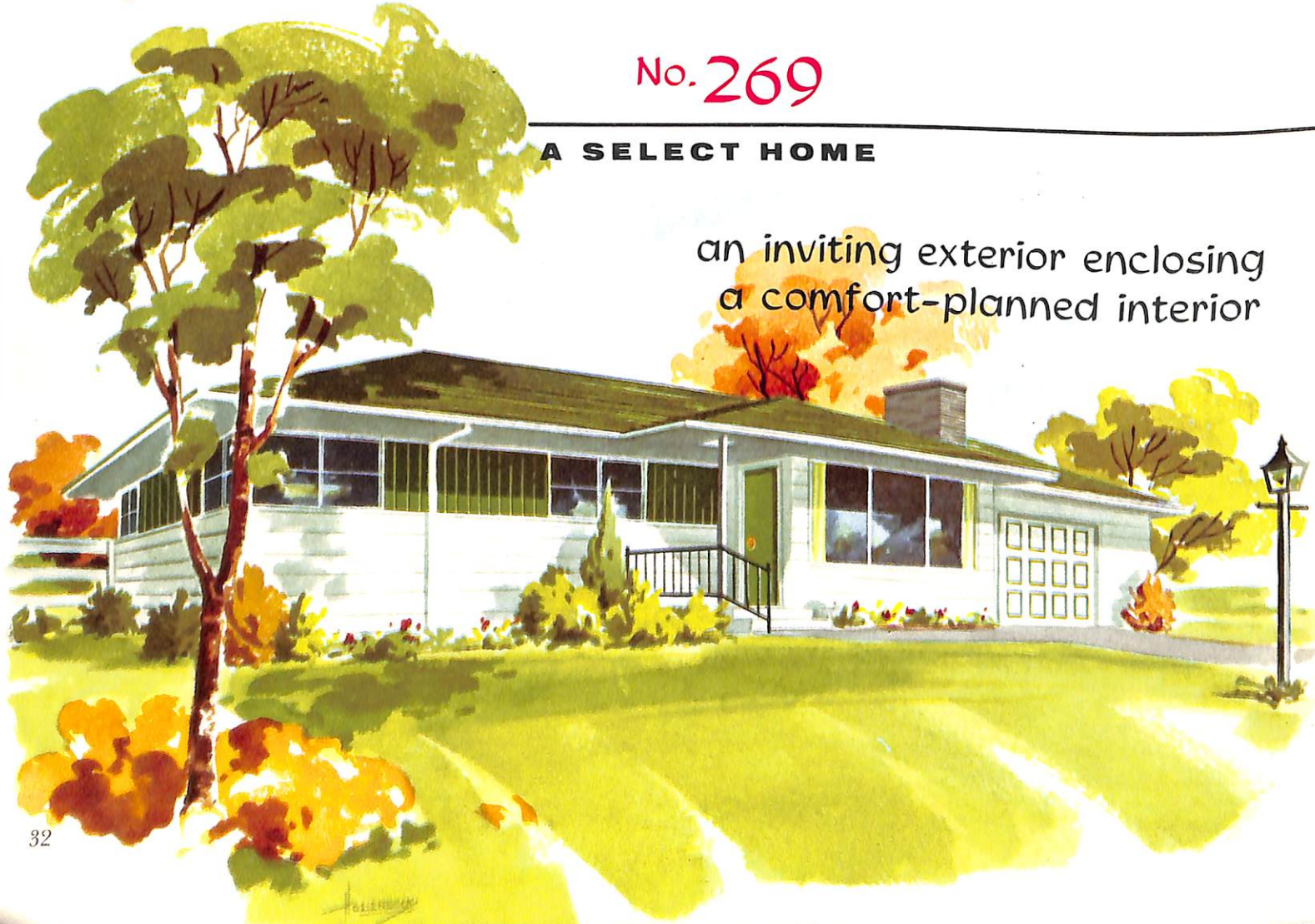
A SELECT HOME

a ranch beauty in brick with  
a three bedroom floor plan

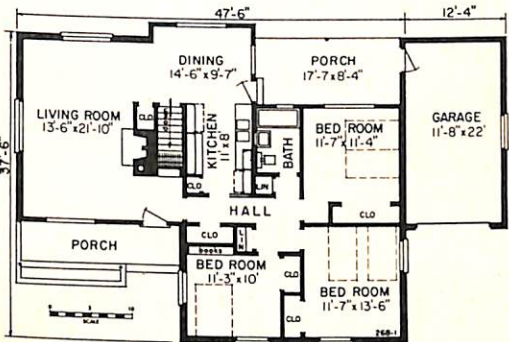


A SELECT HOME

an inviting exterior enclosing  
a comfort-planned interior

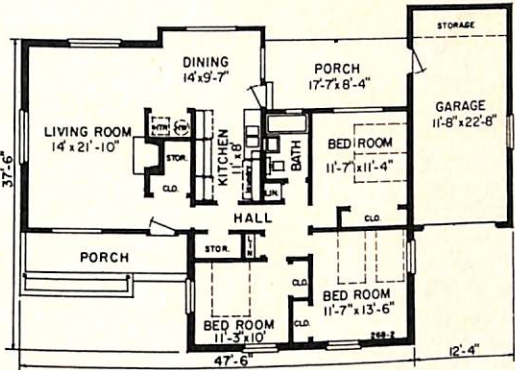


NO. 268 FLOOR PLANS



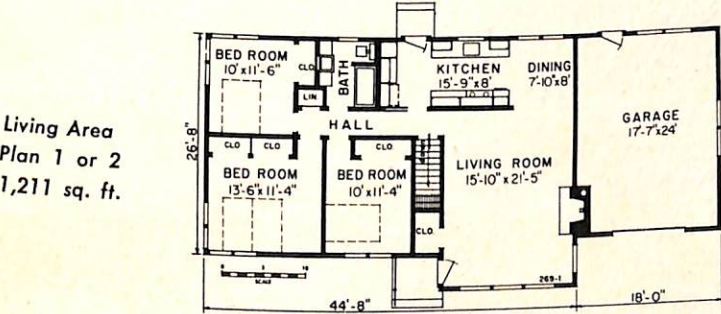
PLAN 1 WITH BASEMENT

Living Area  
Plan 1 or 2  
1,366 sq. ft.

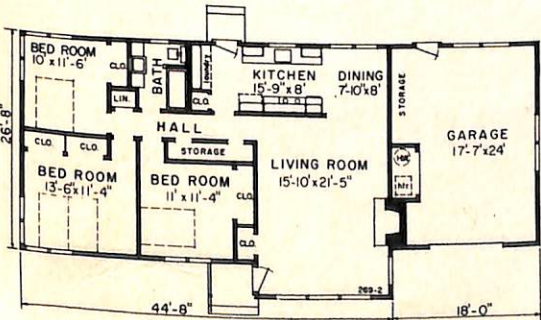


PLAN 2 WITHOUT BASEMENT

NO. 269 FLOOR PLANS



PLAN 1 WITH BASEMENT



PLAN 2 WITHOUT BASEMENT

Living Area  
Plan 1 or 2  
1,211 sq. ft.

Index

TO 51 HOME PLANS

Design No.	Plans Available	Page	Design No.	Plans Available	Page
242	2	2	256	2	19
243	2	3	257	2	20
244	2	4 & 5	258	2	21
245	2	6	259	2	22
246	1	7	260	1	23
247	2	8	261	2	24 & 25
248	2	9	262	2	26
249	2	10 & 11	263	2	27
250	2	12	264	2	28
251	2	13	265	1	29
252	2	14	266	2	30
253	2	15	267	1	31
254	1	16 & 17	268	2	32
255	2	18	269	2	32

ACCURATE BLUEPRINT PLANS

A home must first be "constructed" on paper with every detail clearly defined, if the home builder would be assured of complete understanding and agreement among all concerned with the building of his home. In the interests of sound and better small home construction, each design in this book was engineered by architects and technicians experienced in specialized fields of home planning. All blueprint working drawings include the following: basement or foundation plan; floor plans; front, rear and side elevations; complete framing plans; wall sections and all necessary details.

REVERSED PLANS

Perhaps your home should face the opposite direction. Obviously, a plan designed for a lot facing east will not result in the best exposure when your lot fronts the west. Therefore, plans of homes as illustrated in this book are available either as shown or reversed, as may be required.

SPECIFICATIONS

are statements of particulars which tell you what you are going to receive in materials and workmanship. Blank specification forms and contract forms are included with blueprint plans.

SEE US FOR BLUEPRINT PLANS AND  
OTHER INFORMATION



