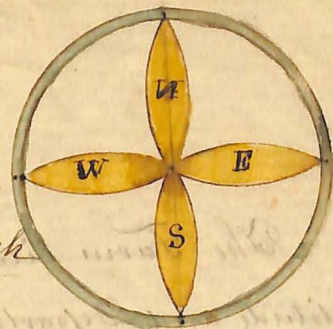


MAP

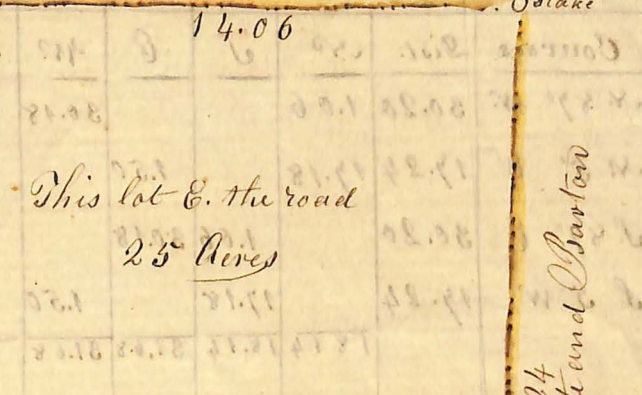
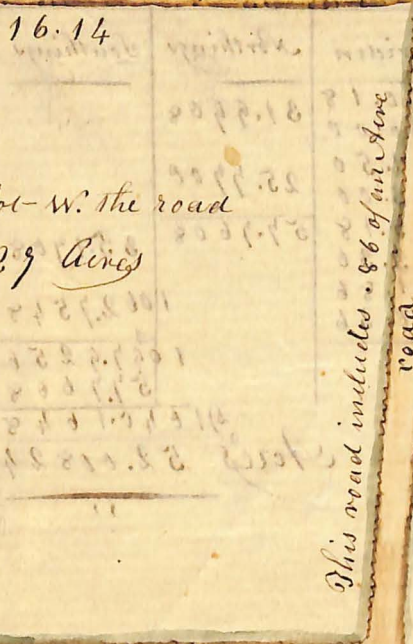
Survey of the Land of Alvin Barnes, situate and lying
 in the town of Huron, Wayne county: Known as a subdivision
 of the Griffith range S. 0. 435. - 18th June 1858. By J. Finch



Adison Abbots Land
 S. 87° E. 30. 20

John S. Gandy's land
 S. 5° E. 17. 24

Stake



Lands of Abts and Barton
 S. 5° W. 17. 24

Public Road

Stake 14.96

marked 435 - S. 87° W. 30. 20
 Harlo W. Chapin's land

Beginning

Stake in
 the center

TAM



The Farm lies in a diamond square: Consequently I cast it by Latitude and Departure for the most accurate method.

Courses	Dist.	N	S	E	W	Meriden	Northings	Southings
N. 87° W.	30.20	1.06			30.18	30.18 00.00	31.9908	
N. 5° E	17.24	17.18		1.50		1.50 3.00	25.7708	
S. 87° E	30.20		1.06	30.18		33.18 63.36	57.7608	35.1708
S. 5° W.	17.24		17.18		1.50	61.86 60.36		106.27548
		18.14	18.14	31.68	31.68		1097.9256	57.7608

2) 1040.1648
 Acres 52.00824

Public Road

14.00

1941.8.22