

Appendix E : Selected Site Photographs

Color

E-3 thru E-21



Plate E-I: Aircraft Wreckage



Plate E-II: Example of a High Density Artifact Scatter



Plate E-III: Example of a Volcanic Glass Scatter

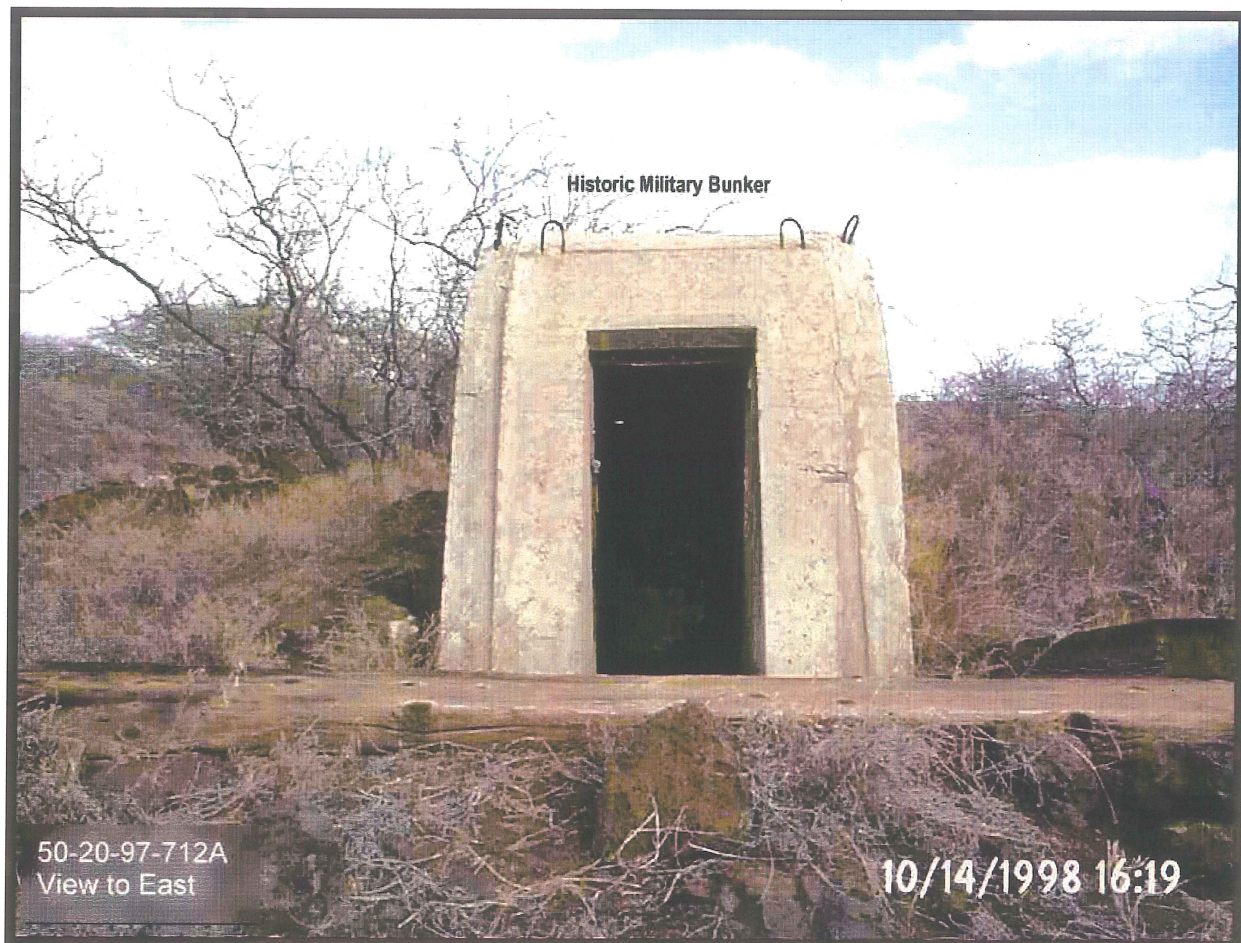


Plate E-IV: Military Historic Property Recorded at Basecamp Recommended for “As Is” Preservation



Plate E-V: C-Shape Structure Recorded at Basecamp



Plate E-VI: Cairn Recorded Along Lower K-1 Road (Note: Recorded as a historic property during the original island wide survey, currently believed to be a modern military structure)



Plate E-VII: Enclosure Recorded in the Basecamp Work Area

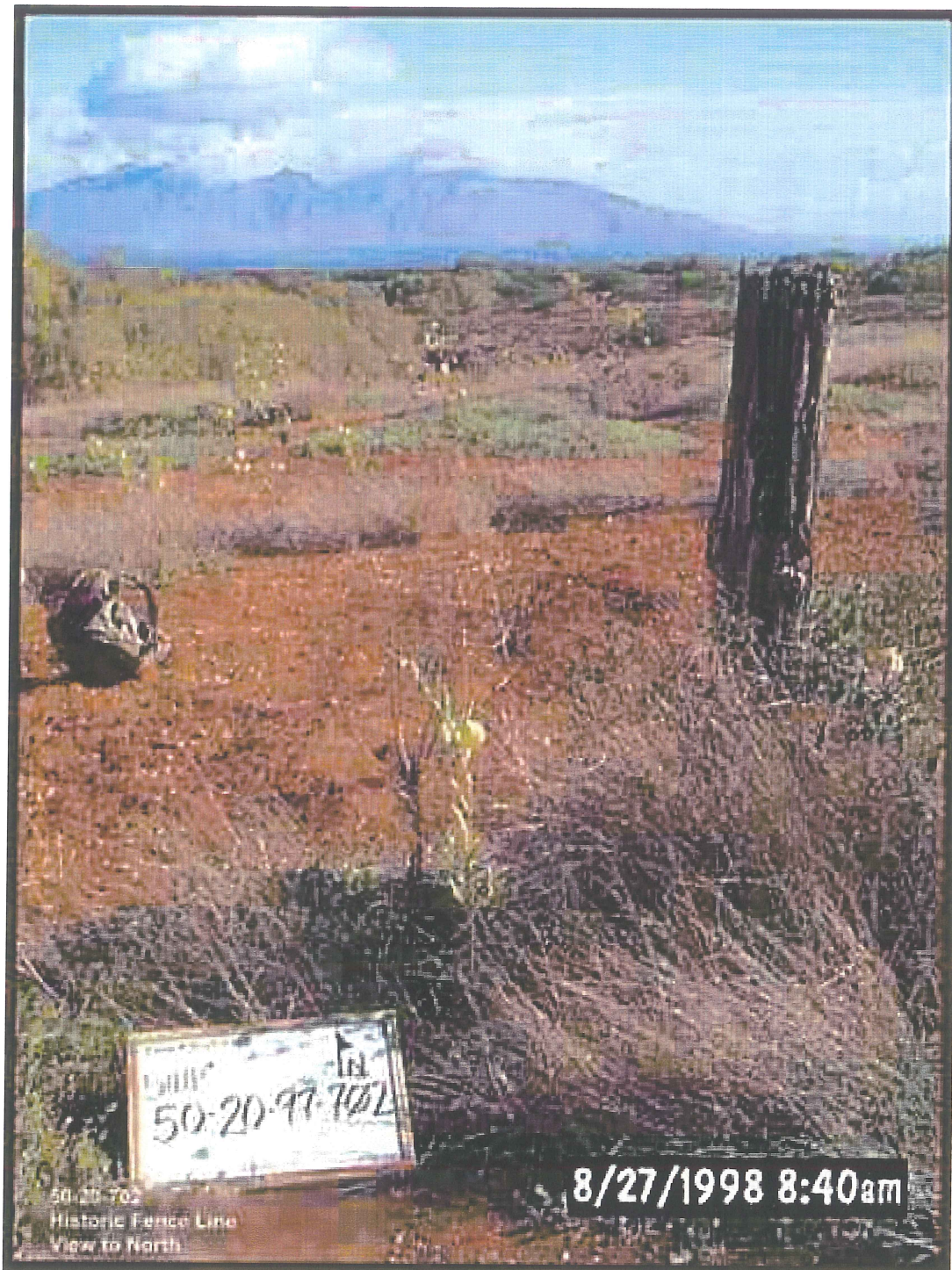


Plate E-VIII: Historic Fence Recorded in the Lua Makika Work Area



Plate E-IX: Ceremonial Structure Recorded at Base Camp Recommended for “As Is” Preservation

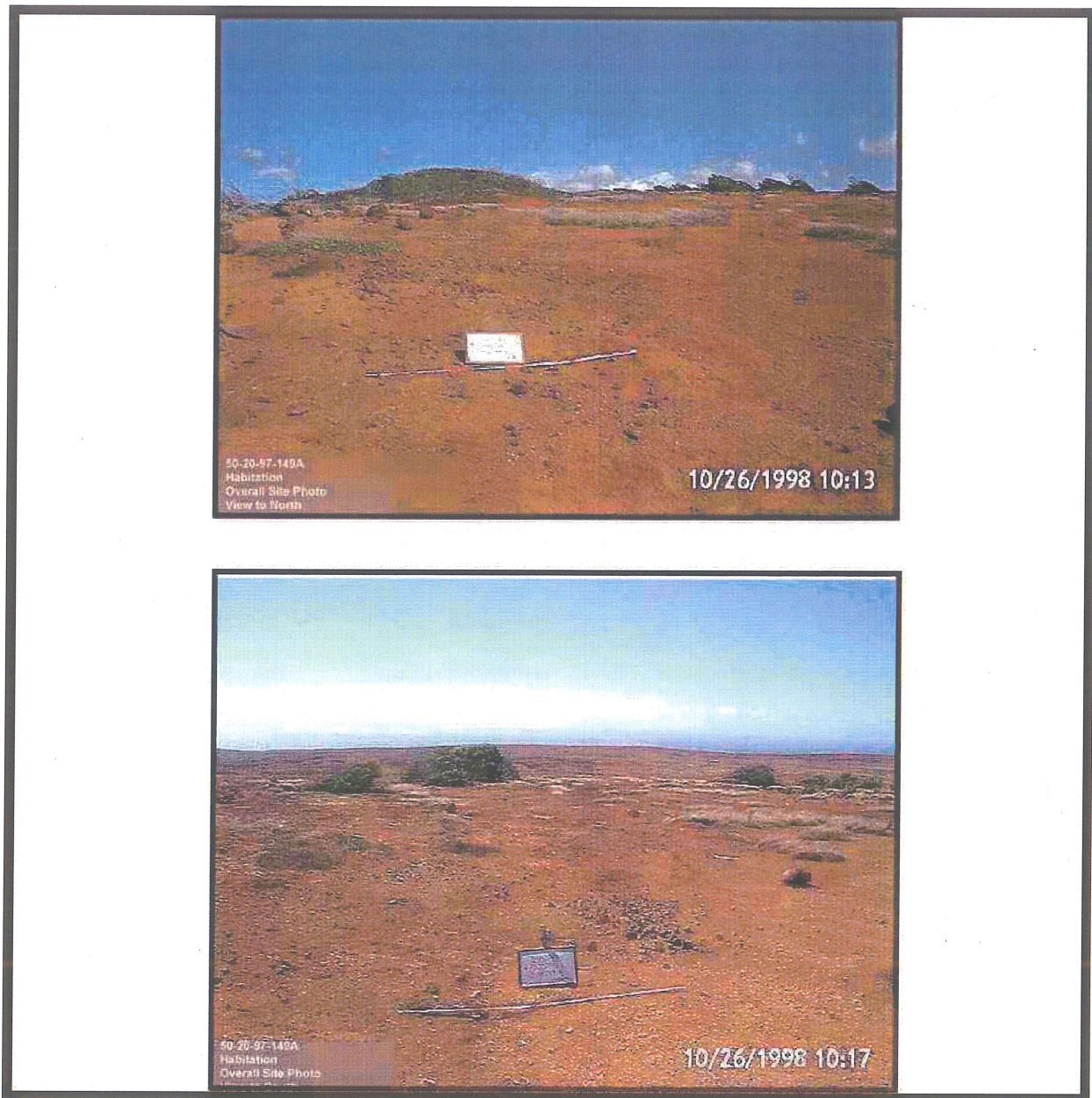


Plate E-X: Habitation Site Recorded at Lua Makika Recommended for “As Is” Preservation

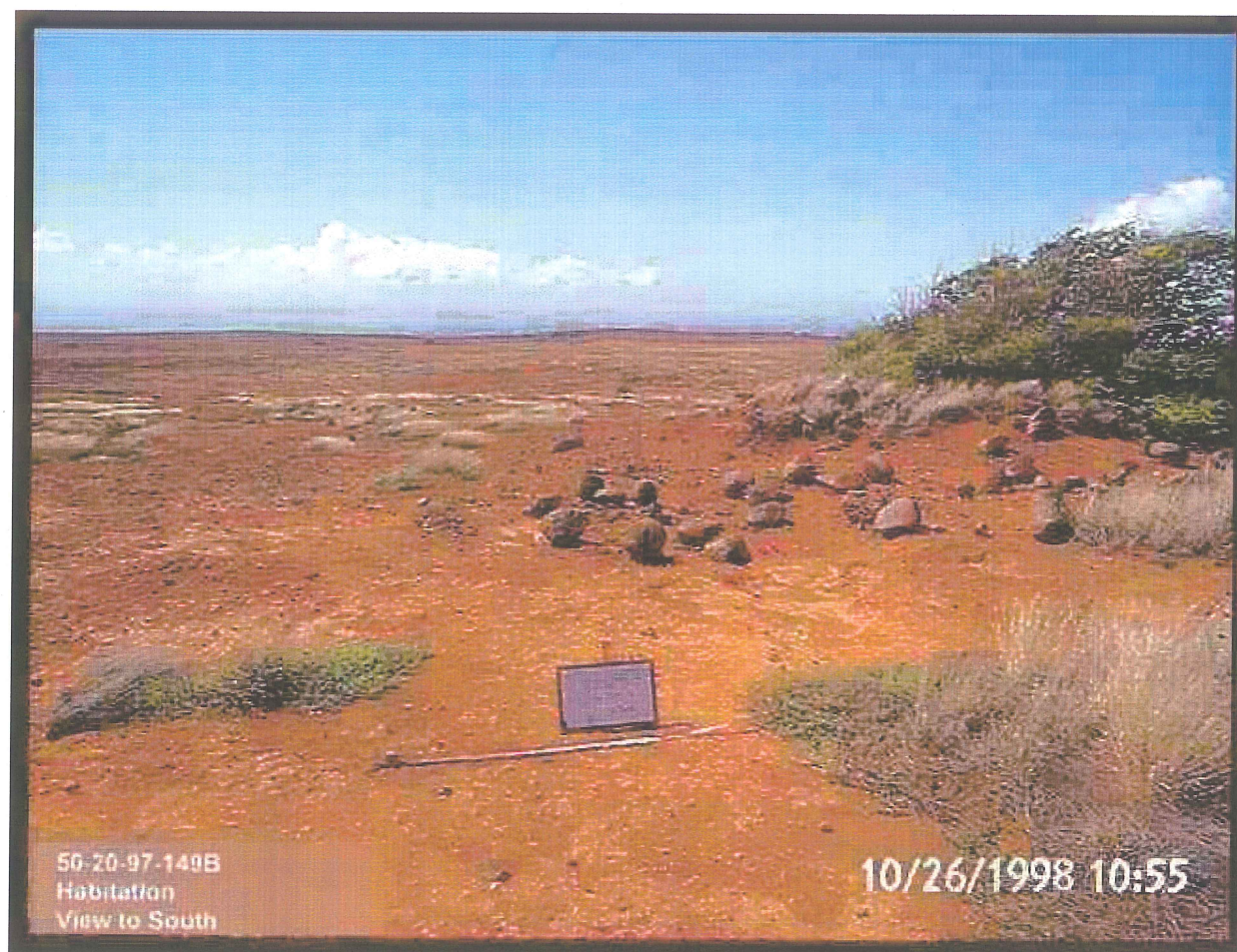


Plate E-XI: Habitation Site Recorded at Lua Makika Recommended for “As Is” Preservation

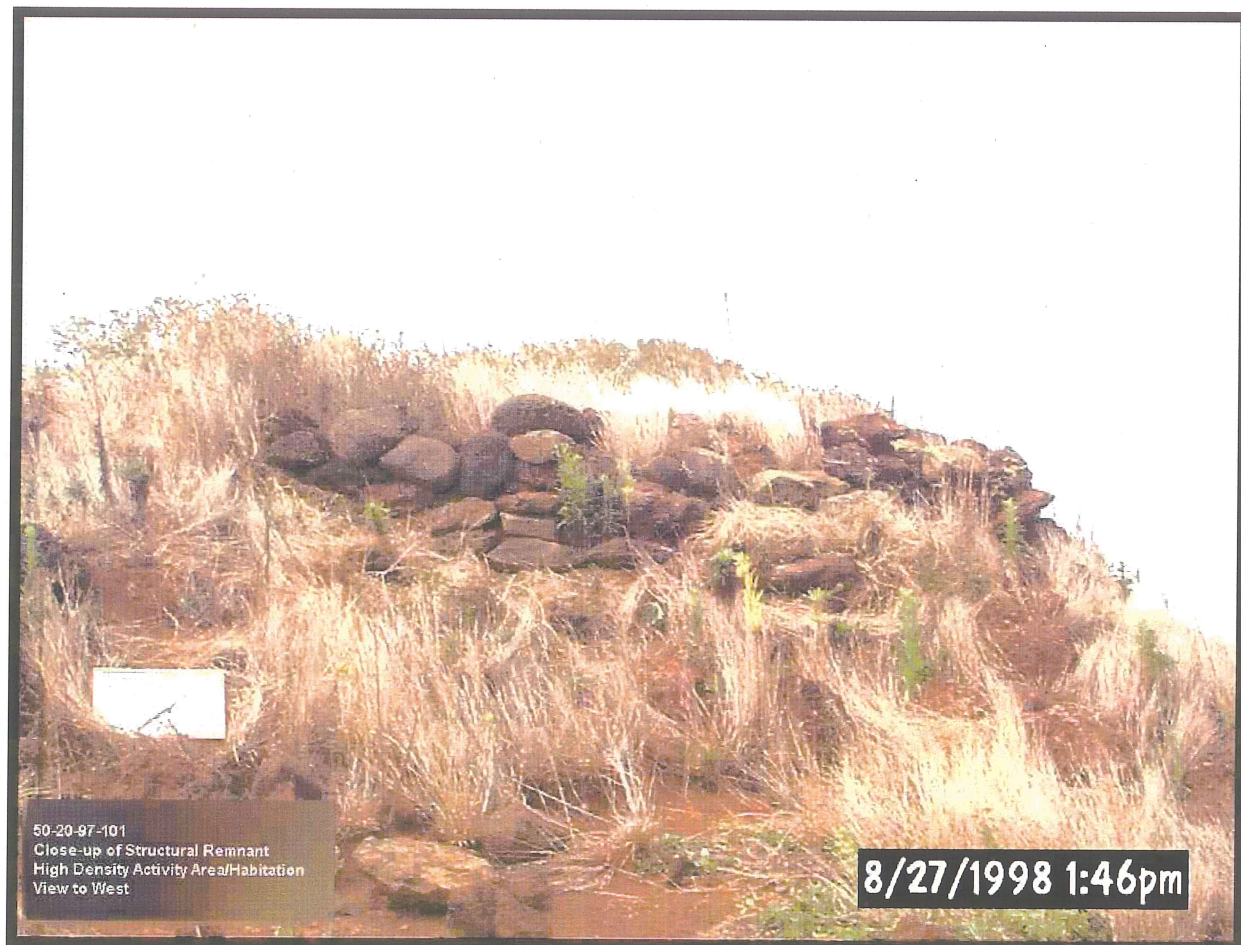


Plate E-XII: Habitation/Possible Ceremonial Site Recorded at Lua Makika Recommended for "As Is" Preservation



**Plate E-XIII: Habitation Site Recorded at Lua Makika Recommended for “As Is”
Preservation**

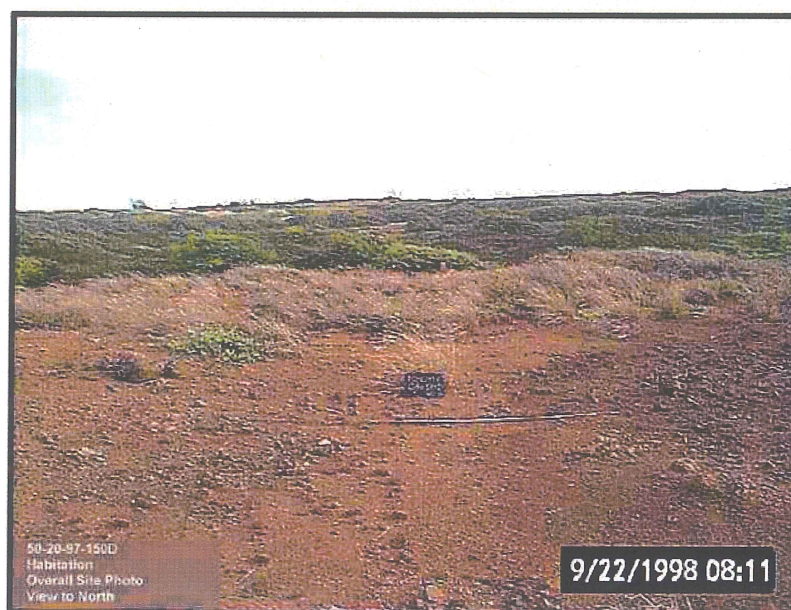
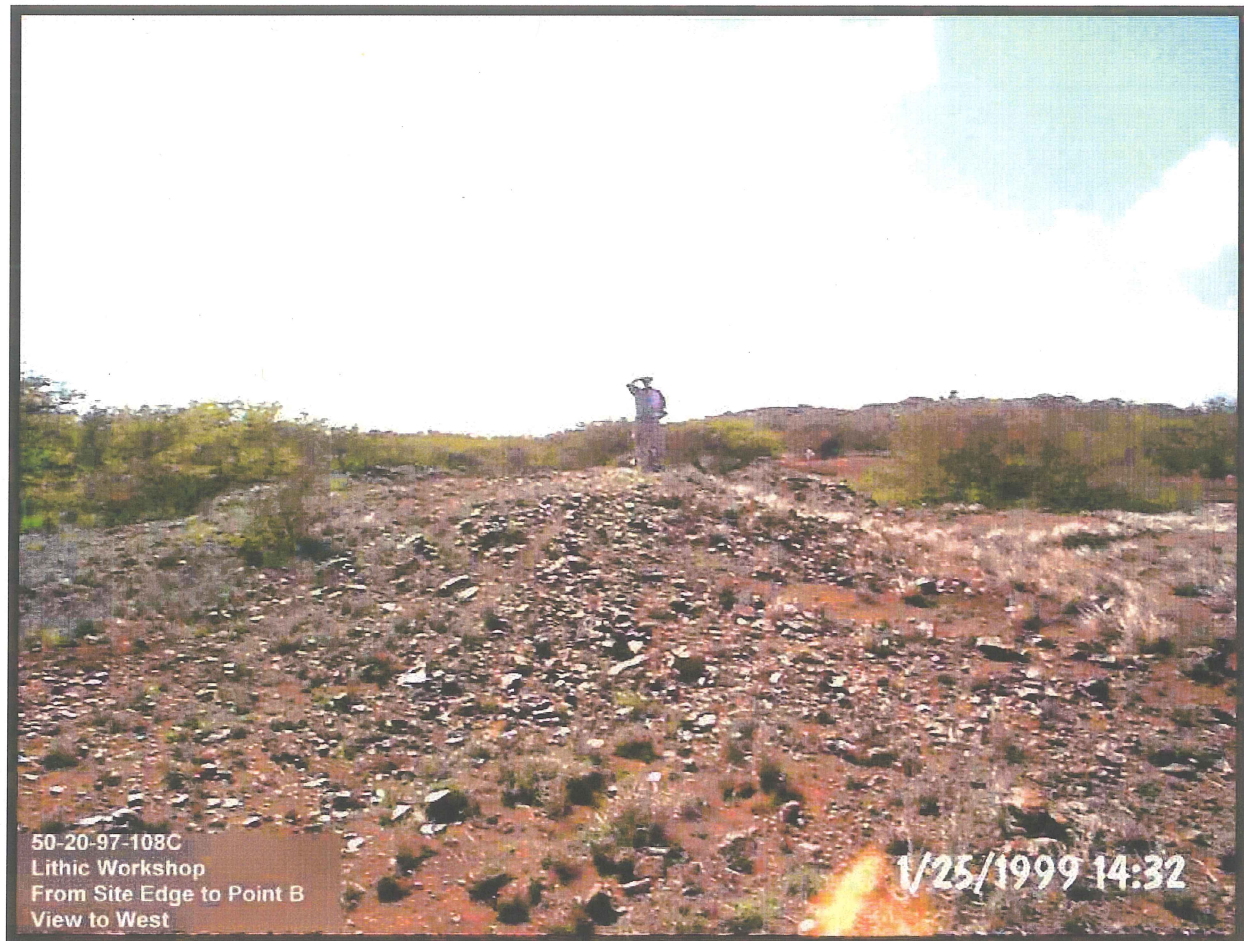


Plate E-XIV: Habitation Site Recorded at Lua Makika Recommended for “As Is” Preservation.



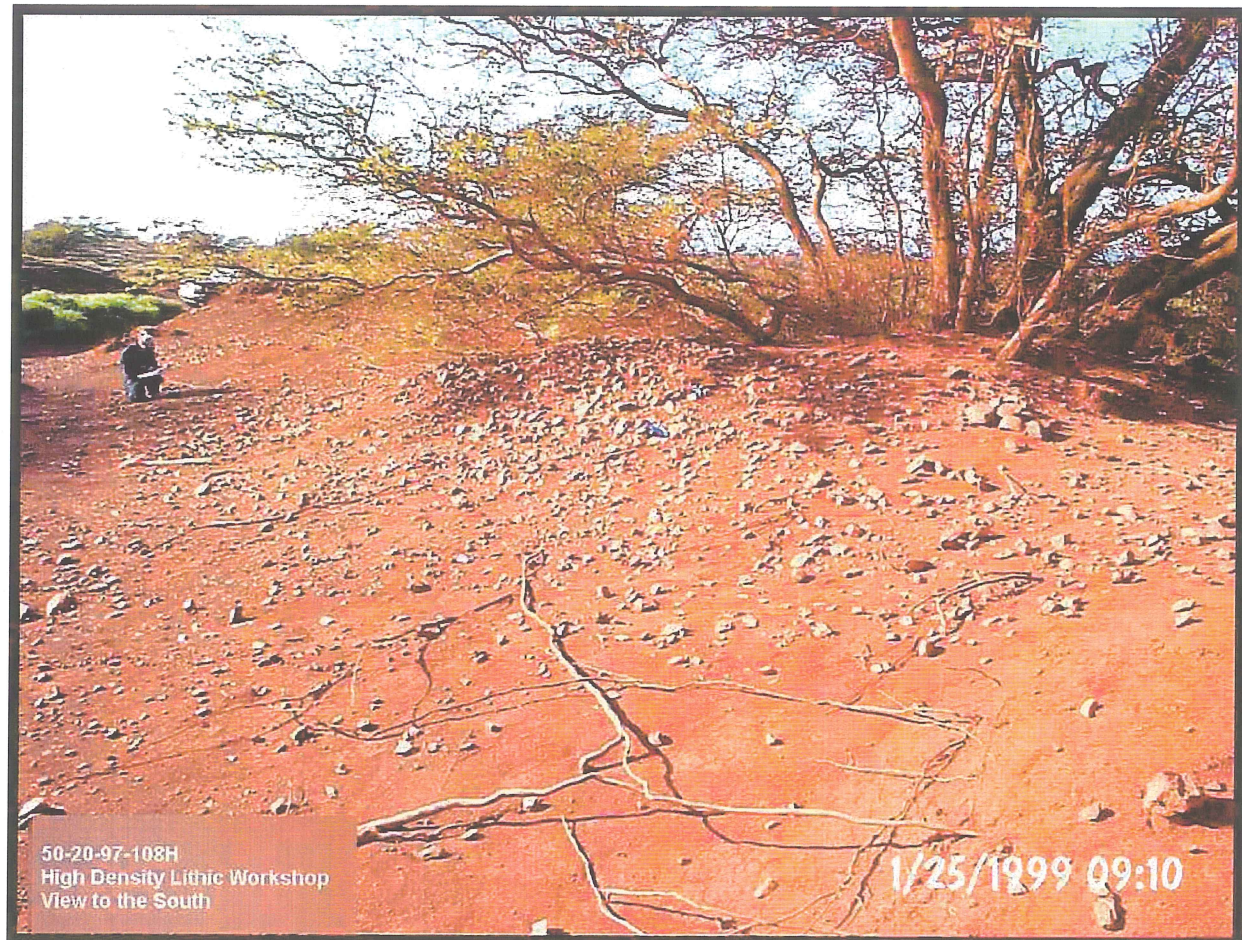
Plate E-XV: High Density Activity Area recorded at Lua Makika Recommended for "As Is" Preservation



**Plate E-XVI: High Density Lithic Workshop Located in the Pu'umo'iwi TCP
Recommended for "As Is" Preservation.**



**Plate E-XVII: High density Lithic Workshop Recorded in the Pu'umo'iwi TCP
Recommended for "As Is" Preservation**



**Plate E-XVIII: High Density Workshop Located in the Pu'umo'iwi TCP Recommended for
"As Is" Preservation**

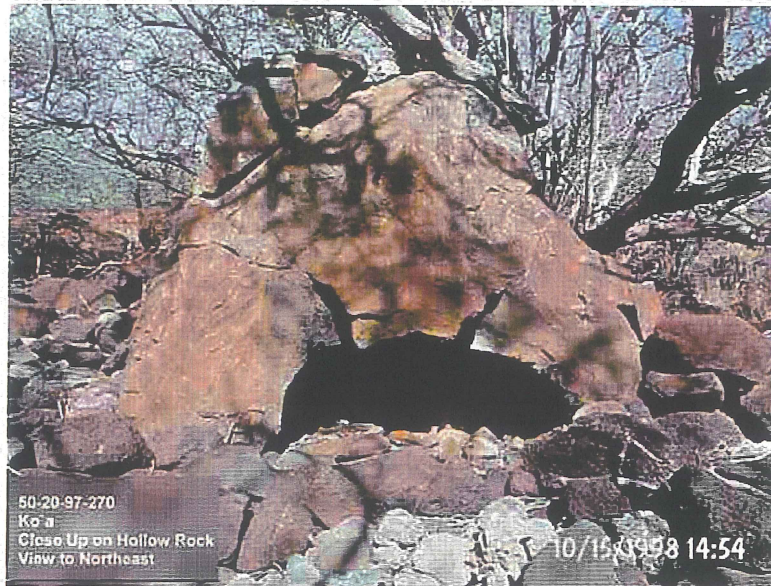


Plate E-XIX: Attributes of a Possible Ceremonial Structure Recommended for "As Is" Preservation Recorded at Basecamp

