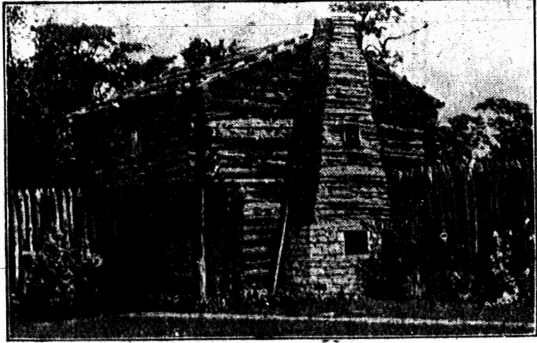


Development of Statewide Homecraft Industries-Aimed



Log cabins such as this were the cradle of homecraft industry in the early days of Kentucky. The revival of this activity among farm and village people is aimed by sponsors of the Onward Kentucky Exposition to be held at the State Capitol in Frankfort on June 5th-6th-7th. If you make unusual articles by hand you are invited to put examples of your best work on display. You may win a cash prize and you will surely help a worthy movement.

That the creating of unusual, handmade articles in rural homes and shops may again be developed into a profitable business, the Shakertown Countryside Industries has been launched. Interest in this plan to organize individual counties in the production of standardized articles has brought into the movement many prominent men and women who sense the value of increased earnings.

To discover articles which can be marketed in quantity, the Onward Kentucky Exposition will be held in the Capitol Building at Frankfort, June 5th, 6th and 7th. On the last day, Sunday, the doors will be open from 1 to 6 p. m. only. No admission fee will be charged and no articles will be for sale.

Any county in Kentucky may enter a display of articles to compete for prizes: \$100 for first, \$50 for second, \$25 for third, \$15 for fourth and \$10 for fifth place. Winners will become the property of the Shakertown Countryside Industries that they may be used as models from which to design and manufacture articles for the market in quantity.

The plan provides that each county hold a local show with three prizes for the most ingenious articles found. These prizes need not be large and might be contributed by the bankers and merchants.

Further information may be obtained by writing to the Kentucky Progress Commission, Capitol Building, Frankfort.

Windows

Windows originally were divided into small panes, because only small panes could be made economically. When the art of glass making made large panes possible, the tendency was to clear windows of all cross pieces and have large, unobstructed surfaces. The effect of these gaping spaces on the architectural appearance of the house was not considered. As the wonder of large panes wore away, we became conscious of the lack of these bars of wood or metal in our windows. We began to realize the beauty of a leaded casement in an English cottage and a 24-light window in a New England farmhouse.

American "Devil's Island"

Fort Jefferson, Fla., called the Devil's Island of America, ranks as the largest all-masonry fortification in the Western World. It was abandoned as an active defense in 1873, but during the Civil War it was the most dreaded of all federal prisons. Shark-infested depths between the prison and the mainland cut off every hope of escape.

First Lima Beans

The first lima beans in America were grown in New York state from seed brought from Lima, Peru, in 1824.

Commissioner's Sale

MERCER CIRCUIT COURT

Hattie L. Crutcher Admrx. & Co. Plff.
vs.
H. H. Crutcher, & Co. Def't.

Pursuant to the judgment rendered herein at the May Term, 1936, I will sell at Public Auction, before the Court House door in Harrodsburg, Kentucky, at 2 o'clock p. m., or thereabout, on

Monday, June 1, 1936

it being the first day of Mercer County Court Term, the property mentioned in the pleadings of said cause, being:

A lot of land with two houses thereon in Harrodsburg, Mercer County, Kentucky, lying on the west side of Warwick Street, and bounded on the North by the property of H. O. James, on the west by the property of J. Harvey VanDiver, on the South by the property of Crews, and on the East by Warwick Street, and being the same conveyed to John G. Crutcher, D. B. 106 p. 347 Mercer County records.

Said property will first be offered each house and lot (divided by a line of equal distance between the two) separately, and then both pieces as a whole, and the bid or bids producing the most money accepted.

So much thereof will be sold as is necessary to pay the debt due Harrodsburg Building and Saving Association, amounting to \$586.02 with 6% interest thereon from Feb. 1, 1936, until paid, the debt due Mercer County National Bank of Harrodsburg, \$125.00 with 6% interest from Nov. 20, 1935 until paid, \$300.00 with 6% interest thereon from June 12, 1935, until paid, \$100.00 with 6% interest thereon from Jan. 16, 1936 until paid, and \$200.00 with 6% interest thereon from June 27, 1936 until paid, and \$150.00 estimated costs, and for further purpose of settling the estate of John G. Crutcher, dec'd.

Said property will be sold on a credit of 6 and 12 months; the purchaser will be required to give bond with approved security for the price, having the force and effect of a replevin bond payable to me bearing six per cent interest from date, and reserving a lien upon the property until the purchase money is all paid.

RUTH M. STRADER,
Master Commissioner.

Hamlet's Origin Traced

Hamlet was a mythical, or semi-historic Danish prince and, the original source from which Shakespeare took the story had the name Hambleth.

Commissioner's Sale

MERCER CIRCUIT COURT

Harrodsburg Motor Co. Inc. Plff.
vs.
Susie Banks. Def't.

Pursuant to the judgment rendered herein at the May Term, 1936, I will sell at Public Auction, before the Court House door in Harrodsburg, Kentucky, at 2 o'clock p. m., or thereabout, on

Monday, June 1, 1936

it being the first day of Mercer County Court Term, the property mentioned in the pleadings of said cause, being:

A house and lot in the city of Harrodsburg, Ky., on English avenue, bounded on the North by Ella Brown; on the West by Frank Donehi; on the South by Kate Boyce; and on the East by English avenue.

Or as much thereof as may be necessary to pay debt and interest in said judgment mentioned to-wit: \$82.94 and \$50.00 estimated costs. Said property will be sold on a credit of 6 and 12 months; the purchaser will be required to give bond with approved security for the price, having the force and effect of a replevin bond payable to me bearing six per cent interest from date, and reserving a lien upon the property until the purchase money is all paid.

RUTH M. STRADER,
Master Commissioner.

Commissioner's Sale

MERCER CIRCUIT COURT

First National Bank Plff.
of Somerset Ky.
vs.
J. W. Renfro, et al. Def't.

Pursuant to the judgment rendered herein at the May Term, 1936, I will sell at Public Auction, before the Court House door in Harrodsburg, Kentucky, at 2 o'clock p. m., or thereabout, on

Monday, June 1, 1936

it being the first day of Mercer County Court Term, the property mentioned in the pleadings of said cause, being:

A house and lot in Harrodsburg, Ky., on the southwesterly side of Beaumont Avenue, consisting of all of lots 10, 11, 38, 39 and 40 and a strip off of the northwesterly side of lot 12, fronting on the street 18 inches and extending back 152.4 feet, all in Block A, Beaumont Park Addition to said city, shown as to location and dimension by a plat thereof of record D. B. 93 p. 26, and being the same conveyed to Bettie L. Renfro by Marrie E. Slaughter, Feb. 7, 1924, D. B. 101 p. 597, all Mercer County records.

Or so much thereof as may be necessary to pay debt of plaintiff amounting to \$1,225.00 with 6% interest thereof from March 24, 1935 until paid, and debt due Harrodsburg Building and Saving Association amounting to \$1,803.73 with 6% interest thereon from May 8, 1936 until paid, and \$150.00 estimated costs. Said property will be sold on a credit of 6 and 12 months; the purchaser will be required to give bond with approved security for the price, having the force and effect of a replevin bond payable to me bearing six per cent interest from date, and reserving a lien upon the property until the purchase money is all paid.

RUTH M. STRADER,
Master Commissioner.

Explore Kentucky— A 'Different' State

In its editorial columns The Cincinnati Enquirer in speaking of automobile "exploring," advises Cincinnati motorists to start with Cincinnati itself. The editorial then calls attention to other spots of interest within easy driving distance of the Queen City, and says of the country across the Ohio river bridges:

"Kentucky is as thoroughly American as Ohio, but it is not Ohio. It, perhaps more than any state in the Union, has a distinct and peculiar local flavor. As the advertisements say, it is different. It is only two hours' ride to Lexington, the capital city of the Blue Grass, a most pleasant and agreeable place. Beyond it is the marvelous Kentucky river and Harrodsburg, with its old pioneer fort. It does not matter where you go in Kentucky, you will enjoy it."

In these days of standardization, when the same makes of automobiles, radio receiving sets and refrigerators and the same brands of cigarettes and face powder are on sale in every community in the country, it is refreshing to realize that in one respect, at least, sameness does not prevail everywhere the traveler may go; and it is good to know that people from other states realize there's something different, something exclusive, about many of Kentucky's tourist attractions. Residents of the Blue Grass state who travel a great deal realize, perhaps more than the stay-at-homes, why Kentucky is favored so highly by out-of-state motorists, says the Lexington Herald.

TRUCK MEN WARNED OF NEW PERMIT LAW

The Division of Public Safety warned truck operators that the new law requiring them to have State permits becomes effective May 27, and that applications should be made "at once."

Capt. Jesse Stone of the State police issued the warning. He said all truck drivers not having permits after May 27, regardless of the weight of the truck, would be arrested.

Call and pay your subscription to The Herald.



THREE TYPES OF LETTUCE— HOW TO GROW THEM

Leaf And Cos Lettuce Are Easiest To Grow And Contain Highest Amount Of Vitamin A.

Leaf lettuce is getting almost into the luxury class, since market gardeners have almost stopped growing it, and the supply of tight, bleached head lettuce from irrigated sections as reached out to every village.

There was a time when head lettuce was the rarity, and esteemed for that reason; and many a home gardener who could not grow heads, felt that his leaf lettuce was hardly worth while.

But the tables have been turned by the revelation that leaf lettuce, and its equally easy cousin, the cos lettuce or romaine, are both superior to bleached heads in vitamin A content. This vitamin which is so essential to the health of children, is said to vary in richness in proportion to the rich green color of leaves. Bleached leaves have much less than green leaves.

Leaf lettuce, moreover, when freshly picked from the garden, is held by good judges to be superior to bleached heads in tenderness and flavor, and quite as crisp. Like other table quality vegetables, it is difficult to market, because it loses its crispness unless kept on ice. But the home gardeners may serve bowl salad made with crisp leaf or cos lettuce, which those who depend on market vegetables cannot duplicate.

Sow your favorite variety of leaf lettuce just as soon as the ground can be worked. It is better to thin out the plants so that they can develop well, though some gardeners do not thin, but allow the plants to grow

comes. The cos lettuce must be thinned or transplanted to six inches apart in the row.

All good lettuce must grow fast. If it stands still the leaves will become bitter. It requires plenty of water, and a dose of plant food will help speed growth.

When cos lettuce begins to make a rosette of slender leaves, they can be tied together and bleached, if you wish. Be sure the leaves are dry when you tie them up. Many prefer not to bleach the leaves, preferring their crisp fresh green.

All lettuces tend to go to seed in hot weather, but a second crop of both leaf and cos lettuce can be grown for the fall salads.

Call and pay your subscription to The Herald.



EYE STRAIN CAUSES HEADACHES

A scientific eye examination and a pair of glasses fitted properly will remove the cause—And they will look well too.

You Will Like Our Modern Methods

DR. R. L. RUSSELL

REGISTERED OPTOMETRIST
HARRODSBURG, KY.



GENERAL MOTORS TRUCK CO.

announces the appointment of

INGRAM-BUICK CO.

as a dealer in

HARRODSBURG, KY.

It is with a feeling of gratification that the General Motors Truck Company announces this appointment—firm in the conviction that it will be to the advantage of GMC operators throughout this locality.

A stock of genuine GMC replacement parts will be maintained by this new dealer and you can be sure that he and his associates will strive diligently to merit the patronage of truck users.

For 1936 the General Motors Truck line is exceptionally complete and exceptionally

noteworthy value-wise. There's a new quality half-ton delivery truck—with a 126-inch wheelbase to accommodate a body 7 feet 5 inches long—an unusually big, rugged, powerful truck with distinctive streamlined appearance, priced at only \$425 chassis f.o.b. Pontiac. There's likewise the many-feature 1½-2 ton GMC truck of value that is priced with the lowest and built to outperform and out-earn. And for those with heavier loads, there's a truck or truck with GMC trailer that is "engineered for the job" and an unmatched value in its capacity range.

GENERAL MOTORS TRUCKS AND TRAILERS

½ to 15 TONS