

Veritas

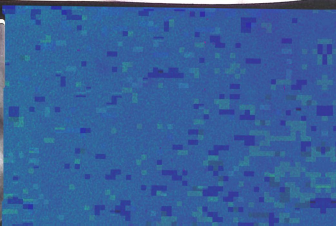


Veritas

*Our
Lady
of
the
Elms*

Akron
Ohio

1966



All things
have their season

. . . and in their times
all things pass under heaven

Ecclesiastes 3:1

Dedication, charity, learning



Sister Marianne

SISTER MARIANNE, OP
M.A., Western Reserve University
Principal, Religion

SISTER M. ALBERTA, OP
M.A., The Catholic University
of America

SISTER M. ANGELA, OP
B.A., St. Mary of the Springs
Latin, English, Religion

SISTER M. AQUIN, OP
B.S., Siena Heights College
Biology, English, Health, Math

Faculty

SISTER M. AUGUSTINE, OP
M.E., Kent State University
Graphic Arts, Religion, Culture

SISTER M. DE MONTFORT, OP
M.T.S., The Catholic University
of America . . .
Biology, Chemistry, Physics

SISTER M. DIANA, OP
M.A., John Carroll University
Journalism, French

SISTER M. DOMINICA, OP
M.A., Ohio State University
American History, Religion,
World History

SISTER M. FLORENCE, OP
M.A., Kent State University
English, American History

SISTER M. HELEN, OP
M.A., University of Akron . . .
B.S. in L.S., Western Reserve
University . . . English, Librarian

SISTER M. JOSEPH, OP
M.A., The Catholic University
of America . . . American History,
Problems of Democracy, Typing

stimulate the search for truth

Chaplain: REVEREND GEORGE L. BUDIMLIC, M.A.

SISTER M. LEO, OP
M.A., The Catholic University
of America . . . Mathematics

MISS PHYLLIS MARIOL
B.S., Kent State University
Physical Education

SISTER M. MATILDA, OP
Ecole De Beaux Arts, Paris . . .
Art

SISTER M. PAUL, OP
M.E., in Music Education . . .
Kent State University
Music, Choral Choir, Culture

SISTER M. REGIS, OP
Ph.B., Siena Heights College
Art, Culture

MRS. A. J. SHEDLOSKY
B.A., University of Akron
Home Economics Survey

SISTER M. THOMAS, OP
B.A., St. Mary of the Springs
French

SISTER M. VINCENTIA, OP
M.S., John Carroll University
Mathematics

SISTER M. WALTER, OP
B.S.E., St. John College of Cleveland
English, World History, Journalism





FIRST ROW: K. Brennan, R. Casseday, D. Barnes, H. Fox, C. Champion, J. Glomski, G. Hearty, N. Farrell, D. Dunn, C. Hobart. SECOND ROW: L. Johnson, N. Adamson, S. Carter, C. Griffin, M. Kelly, J. Hamad, K. Knapp, M. Hansen, J. Krivitsky. THIRD ROW: J. Baliga, J. Guldán, J. Ahern, M. Horak, M. Beskitt, N. Duffy, T. Crisald, I. Gallo, C. Davis. FOURTH ROW: B. Forster, S. Flanagan, N. Clark, C. Bartlebaugh, C. Lawson, D. Kaiser, K. Laube, A. Lynett, J. Adams.

New faces become familiar as freshmen add their spirit.



Left: Freshmen Karen Zinkann, Terry Richardson, Maureen McCuckin, Monica McDermott, and Nancy Adamson delve into the past during a world history class under the careful guidance of Sister Dominica O.P.

Right: Is underhanded activity brewing among the freshmen already? According to Evelyn McElliot, Jean Spalino, Sue Carter, and Mary Kelly their "top secret" experiments are aids to understanding the mysteries of Health Class.





Diane Dunn and Anne Lynette are caught enjoying the Freshman Mixer, Elms style, as they meet with Hoban and Walsh boys at the traditional punch bowl.

*A
time
to
plant ...*

FIRST ROW: R. Thompson, D. Zaber, G. Wojno, D. Miletto, J. Spallino, M. York, S. Oser, K. Spoonster, K. Panetti, E. McGeehan. SECOND ROW: C. Zimmerman, P. Martin, K. Zinkann, J. Wrigley, K. Quinn, M. McGuckin, D. Scalzo, R. Vassel, E. Wagner. THIRD ROW: M. McDermott, P. Seese, C. Manca, M. Maurer, L. Sabett, E. McElliott, S. Schobert, J. Marino. FOURTH ROW: G. Phythyon, M. Sies, A. O'Beza, L. Roncone, T. Richardson, P. Russyn, S. Salk, P. Vaughn, C. Stratiff.





FIRST ROW: M. Bates, S. Hollinghead, G. Flechler, K. Finn, B. Carcione, P. Bianco, M. Horan, D. Gillespie, P. Costigan, A. Hamlin. SECOND ROW: P. Korte, E. Beckwith, C. DeGregory, J. George, D. Harris, R. Horvath, R. Kelly, R. Buehle, K. Brekke. THIRD ROW: N. Cunningham, D. Downing, D. Elmer, K. Hranilovich, M. Dettling, S. Behrle, P. Campbell, B. Ambrosic, E. Henry, B. Hunt. FOURTH ROW: J. Heil, K. Crum, M. Kasarda, K. Gorey, L. Evans, P. Brennan, M. Forster.

Three in a Goldfish Bowl? No, just biology students Cathie Waldh, Marcia Samels, and Bernadette Carcione, who go "underwater" to meet their subject matter face to face.



Right: Pat Brennan, Mary Rees, and Christine Scarpitti join forces to tackle sophomore problems, appearing this time in the form of geometry.



Left: Graphic Arts students Rosalia Horvath, Pam Wiandt, and Pat Costigan have a full time job utilizing new artistic skills in preparing for the annual Christmas sale.



Sophomores find a time to laugh . . . a time to learn

FIRST ROW: C. Scarpitti, A. Rohner, M. Rees, P. Tully, A. Racano, L. Masino, K. Stafford, B. Smith, K. Wiebel, J. O'Neil. SECOND ROW: S. Schadi, D. Scalzo, P. Richards, P. Peters, P. Zinsmayer, P. McNair, P. Wiandt, J. Warner, J. Vorndran. THIRD ROW: D. Mack, M. Samels, M. Underman, M. Mohrman, M. Walsh, C. Walsh, P. Smith, B. Madey. FOURTH ROW: M. Manson, C. Strilecky, M. Schreiner, M. Williams, P. Riccardi, M. Miller, E. O'Connor.





These are only three of the new art students who have donated their talents to help decorate the cafeteria walls. Busy at their work are juniors Toni McDermott, Ailee Cosgrove, and Marianne Swider as they sit among samples contributed by fellow students.

*... and there is
time for thought
and shared things
... and beauty*



Service, study, books, and brushes

FIRST ROW: R. Cuneo, P. DiNuscio, C. Lanza, L. Heckman, J. Labbe, C. Kirby, P. Blanco, R. Clemente, L. Buckley, J. Hippley. SECOND ROW: M. B. McDermott, K. McGrath, K. Clary, A. Beaven, J. Dury, J. Lucas, D. Maurer, C. Fowler, P. McGeehan. THIRD ROW: M. Hockwalt, S. DeSimio, D. Magyary, J. Gardner, S. Borisak, J. Danko, A. Cosgrove, J. Lucas. FOURTH ROW: C. Landoll, P. McDevitt, M. Judge, P. Lynch, J. Cavanaugh, P. Friess, H. Hamlin. FIFTH ROW: E. Goodall, L. Drubeck, G. Cantleberry, A. McDermott, K. Doody.





Above: Christian Action becomes tangible as students help to collect toys to send to a North Carolina Indian tribe for Christmas. Gretchen Schrantz, Peggy Winkler, Sue Moriarty, and Joan Lucas study the possibilities of keeping that hobby horse.

fill the juniors' lives

FIRST ROW: E. Shannon, D. Tedeschi, D. Shannon, N. O'Connor, S. Zeno, M. Scuderi, M. Walsh, J. Zallen, M. O'Connor, G. Persinger. SECOND ROW: M. Racano, C. Zozrow, R. Stuhldreher, L. Sain, C. Miller, C. Thome, S. Smith, L. Sharkey, B. Patterson. THIRD ROW: K. Vogt, C. Stottler, S. Moriarty, R. Vielhaber, M. Winkler, B. Milanovich, M. Swider, P. Ragsdale. FOURTH ROW: D. Sawan, S. Stack, G. Schrantz, K. Remmel, K. Weber, P. Zimmerman, P. Reeves. FIFTH ROW: H. O'Neil, J. Wiener, S. VanDyne, T. Witschey, S. Salk.



On floor and field, it's time



Above: There's teamwork involved as Miss Phyllis Mariol, physical education instructor, assists Mary Lou Farris, Karen Kane, and Martha Hager in gymnastics.

Left: Lisa Johnson and Sue Schobert, sophomores, *st-r-e-t-ch* to push that ball.

. . . to sharpen skills

*First, you learn
how. (Leaning on
hockey sticks is
easy.)*



*Then . . .
you aim for the ball,
instead of her ankles . . .*



*. . . and then it's
a swinging battle
in the fall field
hockey frolics.*



Getting to know you

Right: It's a great night for Gerry Wojno as Marie Stein, president of Student Council presents a door prize at the annual Father-Daughter Banquet. Mr. Walker Wojno, Gerry's father, offers congratulations.

Below: Dads and daughters wait for more prize announcements after dinner. Left to right, Mr. Howard Mills, Mr. Larry Kalgreen, Eileen McCeehan, Mr. Thomas McCeehan and Pat; Ann Marie Mills, Judy Margo, and Mr. Harry Margo.

Above: Autumn at the Elms sends students away from classrooms and books during the noon break.



Right: The audience rises to Handel's MESSIAH during the December Carol Concert. Sister Mary Paul, OP, directs.

Left: "Some Enchanted Evening", the senior dance, November 19, is the setting as Bob Wolf, Sue Emery, Mary Lou Farris, and Mike Bucy enjoy the decorations during the intermission.



sounds the theme . . .

Early in the year, co-curricular activities begin to dot the school calendar. Leadership, service, cooperation--all are translated into finances, speeches, decorations, and, hopefully, successful class projects. Presidents plead, treasurers struggle, and the year is underway.





No, it's not calisthenics, just freshmen getting acquainted at the first fall dance.

We lift up our hearts



Above: The annual Freshman Mixer brought Hoban and Walsh students to the Elms. Tom Lancianese, Jerry Spagnuolo, Bob Stefan, Pat Vaughn, Kathleen Knapp, and Monica McDermott help make out name tags before the dance.



Right: Regis Bartel, Mary Hirtreiter, Sandra Spagnuolo, and Rob Yanko stop for refreshments during the Christmas Cotillion. The golden tree in the center helps highlight this year's theme--"A Gift of Gold."



Miss Marjorie Gordon, coloratura, made her fourth appearance at the Elms in the Detroit Opera Company performance of "The Old Maid and the Thief."



with music



Social and cultural activities bring Elms students to a year-round series of plays, dances, lectures, and concerts. The ever-venetile gymnasium can be transformed from a winter setting for carols and dances to scoreboards and cheering sections overnight. Thanks to perennial clean-up and decoration committees, hours outside the classroom are filled with beauty, fun, and lighter hearts.

. . . A time



to keep

Seniors

Class Motto: "I have promises to keep,
and miles to go before I sleep . . ."

Class Flower: *Daisy*

Class Color: *Yellow and White*

Class Patron: *Saint Jude*

Class President

MARGARET ANN JENKINS

Class President 3,4 . . . JCL 1,2; President 2 . . . Student Council 2,3 . . . NHS
2,3,4 . . . Players Guild 3,4 . . . GAA 2,3,4 . . . Choir 2,3 . . . Volleyball Cap-
tain 1,3 . . . Hoban Homecoming Court; Crowner 4 . . . WAKR Teen Advisory
Board 4 . . . Junior Achievement; Vice-president of Manufacturing 4 . . . Gym
Letter 1,2,3,4.





Vice-president

MARGARET ANN O'NEIL

Class Vice-president 4 . . . Student Council 3,4 . . . JCL 1,2 . . . Choir 3,4;
Secretary 4 . . . Players Guild 3,4 . . . Kent State Student Council Workshop.



Secretary



CAROL MARIE HAAS

Student Council 2,3,4; Secretary 3 . . . Class Secretary 4 . . . Gym Letter 1,2,3,
4 . . . Players Guild 3,4 . . . JCL 1 . . . GAA 2,3,4 . . . Choir 2,3,4 . . . Home
Ec Club 4 . . . Kelly's Island Student Council Convention 4 . . . Hoban Musicales
2 . . . Summit County Volunteer for the Handicapped.

Treasurer



ROSEMARY ANN HAMAD

JCL 1,2 . . . GAA 2,3,4 . . . Players Guild 3,4 . . . Home Ec Club 4 . . . Elm
Leaf Staff 4 . . . Yearbook Staff 4 . . . Choir 3,4 . . . Class Treasurer 4 . . .
Tutorial Program 4 . . . Bowling 3,4 . . . Hoban Musicales 2,3 . . . NHS 4.

MONICA CHRISTINE ANDRES

JCL 1,2 . . . Players Guild 3,4 . . . GAA 2,3,4 . . . CYO Drama Festival 3,4
. . . Yearbook Staff 4 . . . Hoban Musicale 2,3,4 . . . Gym Letter 2,3,4 . . .
Junior Achievement 3,4.



CONSTANCE MARY AYLWARD

Class President 2 . . . JCL 1,2,3; President 3; Voting Delegate 3 . . . NHS 2,3;
Treasurer 3 . . . Elm Leaf Staff 2,3,4; Page Editor 4 . . . Players Guild 3,4 . . .
Home Ec Club 4 . . . UF Essay 2 . . . NCTE Award 4 . . . National Merit Semi-
finalist . . . Scholarship Team 1,2,3 . . . Junior Achievement; Assistant Treas-
urer 3,4 . . . Young Citizen's Award 3 . . . DSPA Convention.



VIRGINIA ANN BADER

NHS 2,3,4; President 4 . . . Student Council 2,3,4; Treasurer 3 . . . Home Ec
Club 4 . . . Choir 2,3,4; Soloist 4 . . . Junior Achievement 3; Treasurer . . .
Class Treasurer 1 . . . Elm Tree Award 3 . . . Akron Beacon Journal's Today's
Teen 4 . . . Elm Leaf Staff; Page Editor 4 . . . Hoban Musicale 2 . . . Young
Citizen's Award 3.



NANCY MARIE BOGNAR

JCL 1,2 . . . GAA 3,4 . . . Junior Achievement 3,4 . . . Hoban Musicale 4 . . .
Gym Letter 1,2,3,4 . . . NHS 4.



SUSAN LEE BROWNE

JCL 2,3 . . . Players Guild 3 . . . Yearbook Staff 4 . . . Junior Achievement 4
. . . Volunteer for muscular dystrophy . . . GAA 3,4 . . . Salesian Teens 1,2,3,4
. . . Hi-Teen Council 1,2,3.



JEAN ELIZABETH BURGOON

GAA 2,3,4 . . . Class Treasurer 2 . . . Leadership Honor Roll 2 . . . Elm Tree
Award 3 . . . Home Ec Club 4; Secretary . . . Players Guild 3,4; Recording Sec-
retary 3; President 4 . . . Student Council 4 . . . Young Citizens Award . . .
Hoban Musicale 2,3.



MARY ELIZABETH CARNEY

Black and White Hockey Team 4 . . . Hoban Musicale 2,3 . . . Gym Letter 1,2,
3,4 . . . GAA 2,3,4 . . . Players Guild 3,4 . . . All-Star Basketball Team 1,2,3,4
. . . Young Citizen's Award 2 . . . Home Ec Club 4 . . . Bowling 3,4.



KATHLEEN MICHELLE CONLEY

NHS 3,4 . . . GAA 3,4 . . . Players Guild 3,4 . . . Gymastics Club 3 . . . Gym
Leader 4 . . . Elm Leaf Staff 4 . . . Junior Achievement 3 . . . CYO; Vice-
president 3 . . . Gym Letter 3,4 . . . Hoban Plays 3,4 . . . Black and White
Hockey Team 4 . . . American Institute of Foreign Study, Dijon, France 3.





KARIN ELNA DRESSLER

JCL 1,2; Secretary 2 . . . Choir 3,4 . . . Elm Leaf Staff 4 . . . Gym Letter 1,2,4
. . . Volleyball Captain 4 . . . GAA 2.



SUSAN DEYA DURBIN

JCL 1,2 . . . GAA 2,3,4; Executive Board 3,4 . . . Players Guild 3,4 . . . Home
Ec Club 4 . . . Gym Leader 4 . . . Gym Letter 1,2,3,4 . . . Bowling 2,3,4; Sec-
retary 3,4 . . . Hoban Musicale 2,3 . . . CYO Drama Festival 3.



SUSAN JANE EMERY

JCL 1,2 . . . GAA 3,4 . . . Players Guild 3,4 . . . Gym Letter 2,4 . . . High
Bowler 1,2 . . . Choir 3,4 . . . Hoban Musicale 3.

Elm Leaf editorial staff members: Ginny Bader,
Mary Kay Klein, Connie Ayiward, Judy Hans-
burg, Barbara Kidder, and Marie Stein.





MARY LOUISE FARRIS

GAA 2,3,4 . . . Gym Letter 1,2,3,4 . . . Basketball Captain 1,3 . . . Hockey Captain 4 . . . White and Black Hockey Team 4 . . . CYO 1,2,3 . . . Choir 2,3,4; Vice-president . . . Players Guild 3,4 . . . Home Ec Club 4 . . . Young Citizens Award 3 . . . Hoban Musicale 2,3,4 . . . "Saint Nicholas" 4.

LINDA LOUISE FOX

Junior Achievement 4 . . . Players Guild 3,4 . . . GAA 2 . . . Graphic Arts Club 2.



MARY THERESE FREEMAN

GAA 2,3,4 . . . Players Guild 3,4 . . . Gym Secretary 4 . . . Gym Leader 3 . . . Gym Letter 3,4 . . . Elm Leaf Staff 4 . . . STH Volunteer 4 . . . Hoban Musicale.



MARGARET EILEEN GARDNER

Class Vice-president 1 . . . JCL 1,2; Vice-president 2 . . . Choir 2,3,4; President 4 . . . Sodality 1,2,3,4; Treasurer 3; Secretary 4 . . . GAA 2,3,4 . . . Gym Letter 1,2,3,4 . . . NHS 2,3,4 . . . Players Guild 3,4 . . . Hoban Musicale 2 . . . Elm Leaf Staff; Photographer . . . AGH Junior Auxiliary 1,2,3,4; Volunteer Co-chairman 3; Treasurer 4 . . . Tutorial Program 4 . . . Elm Tree Award 3 . . . National Merit Letter of Commendation . . . Young Citizen's Award 1,2,3,4.



VALERIE DIANE GIARAMITA

Graphic Arts Club 3 . . . Players Guild 1 . . . Junior Achievement, Controller 4
. . . Gym Letter 1,2 . . . Style Show 1.



STEPHANIE SUE GILBO

Student Council 3 . . . Players Guild 3,4 . . . Youth Citizenship Award 2,3,4 . . .
Graphic Arts Club 3.



PAULA SUZANNE GREENE

JCL 1 . . . Choir 2,3,4; Vice-president 3 . . . NHS 2,3,4 . . . GAA 3,4 . . . Gym
Letter 1,2,3,4 . . . Black and White Hockey Team 4 . . . Gym Leader 3,4 . . .
Akron Gymnastics Club 3 . . . Players Guild 3,4; Vice-president 4 . . . Home Ec
Club 4 . . . Junior Achievement 4 . . . May Company SEVENTEEN Workshop 4.



MARY DUKE GULDAN

JCL 1,2 . . . Elm Leaf Staff 1,2,3,4 . . . NHS 4.



MARTHA JOHANNA HAGER

Players Guild 3,4 . . . GAA 2,3,4 . . . Gym Leader 4 . . . Home Ec Club 4 . . .
Elm Leaf Staff 4 .



JUDITH HANSBURG

Choir 2,3,4 . . . NHS 2,3,4; Secretary 3 . . . Class Treasurer 3 . . . Elm Leaf
Staff 3,4; Page Editor 4 . . . JCL 1,2 . . . Leadership Honor Roll 2 . . . Elm
Tree Award 3 . . . APSL Award 3 . . . Gym Letter 2 . . . Players Guild 3.



EILEEN MARIE HARTZ

JCL 1,2 . . . NHS 2,3,4 . . . Yearbook Staff 4 . . . Choir 3,4 . . . Sodality 1,2,
3 . . . Chemistry Award 3 . . . State Scholarship Team 2,3 . . . Lab Assistant 3
. . . GAA 4.



Christmas Cotillion



MARY KATHLEEN HEARTY

JCL 1,2 . . . Choir 2,3 . . . GAA 2,3,4 . . . Players Guild 3,4 . . . Gymnastics 3 . . . Gym Letter 1,3,4 . . . Hockey Team '65 . . . Junior Achievement 4; Secretary 4 . . . Hoban Musicals 2,3,4.



CHRISTINE LOUISE HEISSER

JCL 1,2 . . . Players Guild 2,3,4 . . . NHS 2,3,4 . . . Student Council 4 . . . Junior Science and Humanities Board Member--Symposium 3,4; Student Board 4 . . . OLE Biology Award 2 . . . 1st Place Diocesan Art Festival . . . Volunteer Citizenship Award . . . Scholarship Team 2 . . . Hoban Musicals 2,3 . . . Gym Letter 1,2,3 . . . Junior Achievement 3 . . . Graphic Arts Club 3.



MARY MARGARET HIRTREITER

JCL 1,2 . . . GAA 2,3,4 . . . Players Guild 3,4 . . . Gym Letter 1,3,4 . . . Bowling 3,4 . . . Yearbook Co-editor 4 . . . Hoban Musicals 2.



ROXANNE ELLEN HECKMAN

Choir 3 . . . Gym Letter 1,3 . . . JCL 2 . . . NHS 2,3,4; Treasurer 3 . . . GAA 2 . . . Sodality 1,2,3 . . . Teenage Scientists . . . Hoban's Science Seminar . . . Scholarship Team 1,2,3 . . . National Merit Finalist . . . Goodwill Volunteer 1,2,3 . . . Math Award 1,2 . . . Elm Tree Award 3 . . . Yearbook Staff 4.

SHELA ROSEMARY HOBAN

JCL 1,2 . . . Players Guild 3,4 . . . NHS 2,3,4 . . . Sodality 1,2,3,4 . . . Elm Leaf Staff 4 . . . Yearbook Staff 4 . . . Scholarship Team 1 . . . APSL Latin Award 2 . . . National Merit Letter of Commendation . . . Science Lectures at Hoban, Case, and Akron U.



JOANNE HOFMANN

Gym Letter 1,2,3,4 . . . JCL 1,2 . . . GAA 3 . . . Players Guild 3,4 . . . Latin Award 1,2 . . . Equitation Club 1,2,3 . . . NHS 4.



PAMELA LYNN HUNT

Players Guild 3 . . . GAA 2,3 . . . JCL 2,3 . . . Junior Achievement 3 . . . Hockey Captain 4.



NANCY ANN KAISER

GAA 2,3,4 . . . Home Ec Club 4 . . . Players Guild 3,4 . . . Style Show 1,4 . . . Hoban Musicales 4 . . . Gym Letter 1,2,3,4.





KATHRYN MARY KALGREEN

JCL 1,2,3 . . . Players Guild 3,4 . . . GAA 3,4 . . . Gym Letter 2,3 . . . Junior Achievement 3,4 . . . Tutorial Program 3,4 . . . Hoban Musicales 2,3 . . . NHS 4.



KAREN ANN KANE

Players Guild 3,4 . . . GAA 2,3,4 . . . Gym Leader 3 . . . Gymnastics 3.



PAULA SUE KEMPER

GAA 2,3,4 . . . Gym Letter 1,2,3,4 . . . Gym Leader 3 . . . Hockey Captain 1 . . . Bowling 1,2,3 . . . Golf Award 2 . . . Players Guild 3,4 . . . Junior Achievement 3,4 . . . Hoban Musicales 2,3,4 . . . Yearbook Staff 4 . . . Class Secretary 4.





BARBARA ANN KIDDER

GAA 2,3,4 . . . Athletic Council 4 . . . Gym Letter 1,2,3,4 . . . Basketball Captain 1 . . . Archery 1,2,3,4 . . . 1st Place 3 . . . Players Guild 3,4 . . . Hoban Musicale 2,3,4 . . . Elm Leaf Staff 4 . . . Page Editor . . . Sodality 2,3,4 . . . Junior Achievement 3,4 . . . NHS 4.



MARY KATHRYN KLEIN

Sodality 1,2,3 . . . NHS 2,3,4 . . . JCL 1,2,3 . . . Elm Leaf 2,3,4 . . . Page Editor 3 . . . Editor-in-Chief 4 . . . Elm Tree Award 3 . . . National Merit Letter of Commendation 4 . . . National Quill and Scroll Award 3 . . . High School Press Institute 4 . . . Science Lectures at Case and Akron U.



MARJORIE ANN KNILL

JCL 1 . . . Hoban Musicale 2 . . . Choral Choir 2,3,4 . . . GAA 2,3,4 . . . Players Guild 3,4 . . . Class Vice-president 4 . . . Gym Letter 1,2,3,4 . . . Student Council 3,4 . . . Vice-president 4 . . . Home Ec Club 4 . . . O'Neil's Fashion Sewing Board . . . March of Dimes . . . Candy Striper--St. Thomas . . . Summit County Volunteer for the Handicapped.



PAULETTE MAYE KRAY

JCL 1,2,3 . . . NHS 2,3,4 . . . GAA 2,3,4 . . . Players Guild 3,4 . . . Junior Achievement 4 . . . Gym Letter 1,2,3,4 . . . Volleyball Captain 4 . . . City Hospital and Children's Home Volunteer . . . Young Citizen's Award 1,2,4.

JUDITH ANNE LA MANCUSA

NHS 3,4 . . . Student Council 4 . . . Choir 2,3,4 . . . Home Ec Club 4 . . . JCL
1,2,3 . . . Historian 3 . . . GAA 2 . . . Gym Letter 1,2,3,4 . . . Players Guild 4
. . . Ohio State Latin Convention.



MARIANNE LUCILLE LIPPS

Science Lectures at Case and Akron U. . . . Yearbook Staff 4 . . . GAA 2 . . .
Leadership Honor Roll 2 . . . Hoban Musicales 2,3,4 . . . JCL 1,2.



BARBARA ELLEN LUCAS

JCL 1,2 . . . GAA 3,4 . . . Home Ec Club 4 . . . Players Guild 4 . . . Junior
Achievement 3,4 . . . Elm Leaf Staff 4 . . . CCD Pre-school St. Hilary's 4 . . .
Hoban Homecoming Court.



LINDA JUNE MACALUSO

GAA 2,3,4 . . . Players Guild 3,4 . . . Graphic Arts Club 3 . . . Gym Letter 1,3,4
. . . Choir 3,4.



JUDITH ELAINE MARGO

JCL 1,2 . . . Recreation Volunteer 1 . . . Hoban Musicale 2 . . . Graphic Arts Club 3,4 . . . GAA 3,4 . . . Players Guild 3,4 . . . Gym Letter 2,3,4 . . . Hospital Volunteer . . . Junior Achievement Vice-president 3 . . . Treasurer 4.



MARY ANNE MASSAD

NHS 2,3,4 . . . Choir Accompanist 2,3 . . . Choir Treasurer 3 . . . GAA 3,4 . . . Akron Gymnastics Club 3 . . . Elm Leaf Reporter 4 . . . Junior Achievement 3 . . . Hockey Captain 1.



CAROL KRISTINE MILETTI

Gym Letter 2,4 . . . GAA 3,4 . . . JCL 1,2 . . . Players Guild 4 . . . Elm Leaf Staff 4 . . . Home Ec Club 4 . . . Candy Striper 2,3,4 . . . "Black Peter" 4.





ANN MARIE MILLS

NHS 3,4 . . . Vice-president 4 . . . Student Council 3,4 . . . GAA 3,4 . . . JCL 1,2,3 . . . Players Guild 4 . . . Choir 3 . . . Student Council Workshops . . . Hoban Musicale 2,3 . . . Volunteer Work--Y.C.C. . . . APSL Awards 1,2,3 . . . Junior Achievement 4.



SUSAN RUTH MUMPER

GAA 2,3 . . . Style Show 1 . . . Hoban Musicale 2 . . . Players Guild 3.



KATHLEEN THERESA O'CONNOR

GAA 1,2,3,4 . . . Choir 2,3 . . . Home Ec Club 4 . . . Players Guild 3,4 . . . Gym Letter 2,4 . . . Hoban Musicale.



CATHLEEN MARY O'TOOLE

JCL 1,2 . . . GAA 2,3,4 . . . Players Guild 3,4 . . . Choir 2,3 . . . Elm Leaf Staff 4 . . . Beacon Journal Teen Reporter 4 . . . Junior Achievement 4 . . . Hoban Musicale 2 . . . St. Thomas Hospital Volunteer.

CLARISSA ANN PARKER

Hoban Musicale 3,4 . . . Tutorial Program . . . Home Ec Club 3 . . . Players Guild 3,4 . . . Junior Achievement 4 . . . JCL 1,2 . . . GAA 2,3,4 . . . Yearbook Staff 4 . . . CYO--Drama Festival.



SANDRA KAY PARKER

Class Secretary 1 . . . Players Guild 3,4 . . . GAA 1,2,3,4 . . . Gym Secretary 3 . . . Gym Letter 1,2,3,4 . . . All-Star Basketball Team 3,4 . . . Black and White Hockey Team 4 . . . Volleyball Captain 3 . . . St. Thomas Hospital Volunteer . . . Junior Achievement; Vice-President 3; Safety Director 4 . . . Science Scholarship Team 1 . . . Young Citizens Award 3 . . . Yearbook Staff 4 . . . Akron Gymnastics Club 3.



SUZAN ANN PARKER

Class President 1 . . . Players Guild 3,4 . . . Home Ec Club 4; Treasurer 4 . . . JCL 1,2 . . . GAA 2,3,4 . . . Gym Letter 1,2,3,4 . . . Gym Leader 3,4 . . . Black and White Hockey Team 4 . . . St. Thomas Hospital Volunteer . . . Junior Achievement 3,4; Ass't Secretary 4 . . . Children's Home Volunteer 3.



HELEN MARIE PAYERLE

Sodality 2,3,4; Vice-president 4 . . . Elm Leaf Staff 4 . . . JCL 2 . . . Choral Choir 3,4 . . . Players Guild 3,4 . . . GAA 2,3,4 . . . Junior Achievement 4 . . . Tutorial Program 4.





VALERIE ANN QUINLAN

JCL 1,2 . . . Graphic Arts Club 3 . . . Junior Achievement 4 . . . Volunteer for YWCA Day Camp . . . Young Citizenship Award . . . GAA 2.



MARGARET LOUISE RICCARDI

Children's Home Volunteer . . . Players Guild 3,4 . . . GAA 2,3,4 . . . Junior Achievement 3,4; Vice-president of Sales 3; Secretary 4; Gym Letter 1,2,3,4.



KATHLEEN ANN RIES

Players Guild 3,4 . . . GAA 2,3,4 . . . Junior Achievement 3 . . . Gym Letter 1,2,3,4 . . . Equitation Club 1,2.

Mrs. A. J. Shedlosky, helps with costume designing as Sandra Boisuk, Susan Durbin, Jean Burgoon Nancy Kaiser, and Jeannette Scala prepare for a St. Patrick's Day celebration.





CHERYL ELIZABETH ROE

JCL 1,2 . . . GAA 2,3,4 . . . Class Secretary 3 . . . Players Guild 3,4; Treasurer 4 . . . Home Ec Club 4 . . . Gym Leader 4 . . . Tutorial Program 4 . . . Gym Letter 1,2,3,4 . . . NHS 2,3 . . . Saint Thomas Hospital Volunteer . . . Hoban Musicales 2,4 . . . Yearbook Staff 4.

CAROL ANN SAMELS

Sodality 3,4 . . . Players Guild 3,4 . . . Home Ec Club 4 . . . GAA 2,3,4; Treasurer 2; Secretary 3; President 4 . . . Elm Tree Award 3 . . . Tutorial Program 4 . . . Young Citizenship Award 3 . . . Gym Letter 1,2,3,4 . . . Black and White Hockey Team 4 . . . Bowling 3,4 . . . All Star Basketball Team 1,2,3,4 . . . Hoban Musicales 2,3.



JEANNETTE SCALA

Home Ec Club 4 . . . Players Guild 3,4 . . . GAA 2,3,4 . . . Gym Leader 3,4 . . . Gym Letter 1,2,3,4 . . . Black and White Hockey Team 4 . . . Soccer Captain 3 . . . Tutorial Program 4 . . . Hoban Musicales 2,3,4.



MARY JO SHANNON

Players Guild 3,4 . . . GAA 2,3,4 . . . Junior Achievement 3,4; Treasurer 3,4 . . . JCL 1,2 . . . Sodality 2,3,4 . . . General Hospital Volunteer . . . Yearbook Staff 4 . . . Junior Citizenship Award . . . Gym Letter 1,2.



KATHY LEONINE SMITH

Choir 2,3,4 . . . Players Guild 3 . . . GAA 2,3 . . . Gymnastics 3.



JOANNA SOFCHECK

Postulant . . . Our Lady of the
Elms Novitiate



SANDRA JEANNE SPAGNUOLO

Class Treasurer 1 . . . Class Vice-president 2 . . . JCL; Treasurer 2 . . . Student
Council 3,4 . . . Yearbook Co-editor 4 . . . CYO Hi-Council; Vice-president 4
. . . Sodality 1,2,3,4 . . . Players Guild 3,4 . . . Choir 4 . . . GAA 2,3,4 . . .
Gym Letter 1,2,3,4 . . . Elm Leaf Staff; Sports Reporter 4 . . . Student Council
Kent State Workshop.



MARIE CURTIS STEIN

Student Council 2,3,4; President 4 . . . NHS 3,4 . . . Elm Leaf Staff; Page Editor
4 . . . Hoban Homecoming Court; Queen . . . Camplon Homecoming Court . . .
Elm Tree Award 3 . . . O'Neill's Fashion Board 4 . . . Choir 2,3,4 . . . Tutorial
Program 4 . . . GAA 2,3,4 . . . Players Guild 3,4 . . . JCL 1,2 . . . Gym Letter
1,2,3,4.



SALLY SUE WALTERS

JCL 1,2,3; Vice-president 3; Convention Delegate 3 . . . Junior Achievement 3,4; Vice-president of Sales 4 . . . Gym Letter 1,3 . . . NHS 2,3,4 . . . AGH Junior Auxilliary 2,3,4 . . . Tutorial Program 4 . . . Players Guild 4 . . . National Merit Letter of Commendation . . . Elm Leaf Staff 4 . . . Yearbook Staff 4 . . . Elm Tree Award 3 . . . Scholarship Team 1,2,3.



CYNTHIA GARDNER WERNIG

Sodality 2,3,4; President 4 . . . Student Council 3 . . . Players Guild 3,4 . . . GAA 2,3,4 . . . JCL 1,2 . . . Junior Achievement 3,4 . . . Elm Leaf Staff 4 . . . Choir 2,3,4 . . . Sodality Convention, Washington D.C.

LISBETH MARIE WIENER

JCL 1,2,3 . . . NHS 3,4 . . . GAA 2 . . . Elm Tree Award 3 . . . Tutorial Program 4 . . . Latin Convention 3 . . . Gymnastics 3.





PATRICIA ANN WILCOX

Home Ec Club 3 . . . GAA 3 . . . Graphic Arts Club 3.

JOY MARIE WIESHEIER

JCL 1,2 . . . GAA 3,4 . . . Players Guild 3,4 . . . Home Ec Club 4; President 4
. . . Junior Citizenship Award 3 . . . Sodality 2,3,4 . . . Hoban Musicale 2,3
. . . Gym Letter 1,2,3,4 . . . Hockey Captain 2 . . . Gymnastics 3.



DEBORAH ANN ZINKANN

Gym Letter 1,2,4 . . . Players Guild 4; Secretary 4 . . . GAA 4.



ROSEMARY ANN ZWISLER

Choir 3,4 . . . GAA 2,3,4 . . . Players Guild 3,4 . . . JCL 1,2 . . . Hoban Musicale 2,3,4 . . . NHS 4.



Patrons

Mr. and Mrs. William R. Andres*

Mr. and Mrs. John A. Bader

Dr. and Mrs. N. C. Bianco

Mr. and Mrs. Vincent J. Blanco

Mr. and Mrs. Robert L. Buehrle

Mr. and Mrs. George A. Burgoon

Mr. and Mrs. William H. Campbell

Mr. and Mrs. Frank Cziraki

Dr. A. J. D'Angelo

Mr. and Mrs. Jack Dunn*

Mr. and Mrs. Thomas A. Durbin*

Mr. and Mrs. W. C. Emery*

Mr. and Mrs. George Farris

Mr. and Mrs. John Freeman

Mr. and Mrs. Charles Fox

Mr. and Mrs. Frank A. Gardner*

Mr. and Mrs. John Giaramita*

Mr. and Mrs. Charles T. Gilbo*

Mr. and Mrs. Charles E. Greene

Mr. and Mrs. John A. Guldán*

Mr. and Mrs. Conrad Haas*

Mr. and Mrs. Harry Hamad*

Mr. and Mrs. Milton Hansburg*

Mr. and Mrs. Richard J. Hearty*

Mr. and Mrs. Leo Heisser

Mr. Arthur B. Hirtreiter*

Mr. and Mrs. George J. Hoban

Eddie "Atlas" Hofacker

Mr. and Mrs. J. C. Hofmann Jr.*

Mr. and Mrs. A. J. Horak

Mr. and Mrs. H. E. Hunt

*\$10 patron

Mr. and Mrs. Charles Jenkins*

Mr. and Mrs. L. N. Kalgreen

Mr. and Mrs. Harry C. Kidder

Mr. and Mrs. Gerald H. Kleis*

Mr. and Mrs. Robert B. Knill*

Mr. and Mrs. Albert LaMancusa*

Mr. and Mrs. Ralph L. Lipps

Mr. and Mrs. Thomas F. Lynett Jr.

Mr. and Mrs. John J. Mance*

Mr. and Mrs. Paul L. McDermott*

Mr. and Mrs. Fred Miletti Jr.*

Mr. and Mrs. John Miller

Mr. and Mrs. E. John O'Breza

Mr. and Mrs. W. J. O'Neil

Mr. and Mrs. James G. O'Toole*

Mr. and Mrs. Charles E. Parker*

Mr. and Mrs. Vernon C. Parker

Mr. and Mrs. W. C. Richards Jr.*

Mr. and Mrs. Robert Schreiner

Mr. and Mrs. Alfred R. Seese

Mr. and Mrs. Donald Snell*

Mr. and Mrs. Andrew N. Spagnuolo*

Mr. and Mrs. Gerard H. Steis*

Mr. and Mrs. J. J. Walbeck

Mr. and Mrs. Raymond R. Wernig*

Mr. and Mrs. Sanford Wiener*

Mr. and Mrs. Harris M. Wilcox*

Mr. and Mrs. Charles A. Williams*

Mr. and Mrs. Fred Zaber*

Mr. and Mrs. E. Zimmerman

Mr. and Mrs. R. J. Zwisler Sr.*

