

1968

Our Lady of the Elms

CANTICLE

Akron, Ohio

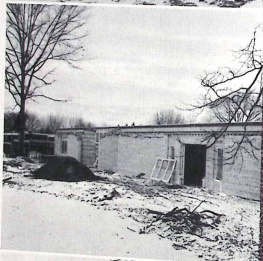
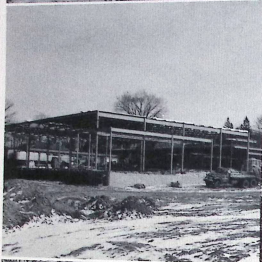




Our Lady of the Elms • Akron, Ohio

Look to for it

... and
lie
and



this day is the very life of life

*in its brief course
all the varieties
realities of your existence*



OLE faculty stimulates

SISTER M. ALBERTA, OP
M.A., The Catholic University of America
Secretary, Religion

SISTER M. ANGELA, OP
B.A., St. Mary of the Springs
Latin, English, Religion

SISTER M. AUGUSTINE, OP
B.A., Kent State University
Graphic Arts, Religion, Culture

SISTER M. CHARLES, OP
B.A., St. Mary of the Springs
French, English, Screen Arts

SISTER M. CLARITA, OP
M.A., University of Akron
World History

MISS DORIS CLEVELAND
B.S., University of Akron
Physical Education

SISTER M. DE MONTFORT, OP
M.T.S., The Catholic University of America
Biology, Physics

SISTER M. DENISE, OP
B.S., Youngstown University
Chemistry, Physical Science, Geometry, Health

SISTER M. DIANA, OP
M.A., John Carroll University
French, Religion, English

SISTER M. DOMINICA, OP
M.A., Ohio State University
World History, Asian History, American History

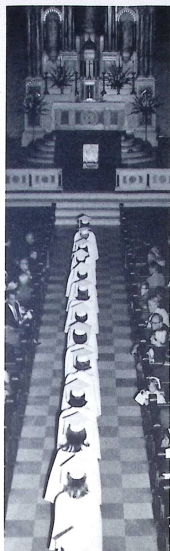
SISTER M. FLORENCE, OP
M.A., Kent State University
English, Reading

SISTER M. HELEN, OP
M.A., University of Akron
B.S., in L.S., Western Reserve University
English, Librarian

MR. GEORGE HERSCHEL
Diploma de Estudios Hispánicos
University of Madrid . . . B.A., Lafayette College
Spanish



SISTER MARIANNE, OP
M.A., Western Reserve University
Principal, Religion, Guidance



search for knowledge

SISTER M. PAUL, OP
M.E., Kent State University
Music, Choral Choir, Culture

SISTER M. REGIS, OP
Ph.B., Siena Heights College
Art, Culture

MRS. A. J. SHEDLOSKY
B.A., University of Akron
Home Economics, Health, Culture

SISTER M. THOMAS, OP
B.A., St. Mary of the Springs
Mathematics, Religion

Mother General:
MOTHER M. EILEEN, OP, M.A.

Spiritual Directors

SISTER M. JOANNE, OP
B.S.E., St. John College
Mathematics, Religion

SISTER M. JOSEPH, OP
M.A., The Catholic University of America
Sociology, American History, Typing, Guidance

SISTER M. JOSEPHA, OP
M.A. Notre Dame University
Latin

SISTER MADONNA, OP
M.A., St. John College
English, Speech

CANON GEORGE L. BUDIMLIC, M.A.
Our Lady of the Elms
Seniors

REVEREND VINCENT A. AMODEO, B.A.
St. Anthony Parish
Juniors, Sophomores

REVEREND RAPHAEL E. DURANT, B.A.
St. Paul Parish
Sophomores, Freshmen

REVEREND THOMAS J. GALLAGHER, B.A.
St. Martha Parish
Seniors, Freshmen

REVEREND EDWIN J. SCHENKELBERG, B.A.
St. Bernard Parish
Freshmen

REVEREND LEO H. WENNEMAN, B.A.
Holy Family Parish
Juniors

Knowledge binds one



Science, singing, home economics projects, visits from St. Nick, study, prayer and creative work fill the days of the Blinn students as the pages of the calendar are turned from September to June.



The elms is alive . . .



"The Sound of Music" delighted viewers and participants alike. Starring in the production were Rebecca Buehle as Maria, Patricia Campbell as Mother Abbess and Robert Shoman as Captain Von Trapp.



Left: "It's sock it to 'em time" as first snows tempt seniors outdoors.

... with the sounds of activity

Student Council President, Sue Schadt, converses with Mr. Paul Stouthamer, his daughter, Marguerite, Jan Carroll and her father, Mr. Paul Carroll, at the annual Father-Daughter Banquet.



Right: As the Senior Dance initiates the Commons, publications photographers, Bernadette Carcione, and Patricia Bianco, capture the scene.





Above STANDING: Barbara Zeller, Mary Alice Zeisig,
Linda Zimmerman; SEATED: Patrice Zaber.

Freshman year is



Left to right: Mary Beth
Hummel, Nancy Tramonte,
Sandy Evans, Molly Costigan,
Martha Burger.

Left to right:
Mary Pierson,
Ruth Graves,
Barbara Herr,
Christine Obarski,
Susan Barnes,
Pamela Urbon,
Rita Lucas,
Teresa Hamad,
Rosemary Marchese,
Kathleen Koval



a new beginning



Back: Anne Stallings, Diane VanDyne, Amelia Smith, Barbara Spallino, Front: Denise Ruff, Anne Scoville, Yvonne Walch.

Little sisters become an important part of O.L.E. and soon adjust to their new way of life, which entails fun-filled Freshie Day, Big Sis-Little Sis picnics and Freshman Mixers. Hard work, however, brings the girls back to the realities of high school.



Left to right: Jan Fawcett, Martha DiFederico, Boni Elewski, Donna Ford, Kathryn Champion

STANDING from left to right: Chrysa Lukacik, Nancy Rankin, Julianne Schlass, Elaine Walczuk. SEATED: Catherine Murphy, Patricia Maselli, Anne Forster, Diane Hall.



Leaders of the Freshman Class
 Rita Kelly, president;
 Peggy Schobert, vice-president;
 Amy Della-Coletta, secretary-treasurer.



Left to right: Caryn Jost; Linda Beatty, Alice Krupp, Judith Reidy, Debra Racey, Kathleen Hamlin, Pamela Jones.



Freshmen



Left

Back left: Anne Large, Terry Peddie, Julie Hummel, Kathleen Roman, Front left: Diane Bachmann, Deborah Richards, Barbara Bianco, Joan Cummings, Constance Gorey, Barbara Seese.



Right, Front left: Monica Ambrosic, Constance Lucas, Rebecca Arko.
 BACK ROW: Sharon Murdock, Marie O'Neil, Patricia Smith, Linda Walsh, Ann Waickman, Karen Koval.



Front left: Maureen McKinney, Denise Battig, Margaret Carney, Mary Baumgardner, Phyllis Bartlett, and Catherine Bender.

discover new friends, new experiences

Homeroom teachers Sister Denise, Sister Joanne, Sister Augustine and Sister Regis, guided Freshmen with patience and understanding. The freshman curriculum was highlighted by a culture course in which the students were instructed in Music Appreciation by Sister Paul, Home Design by Mrs. Shedlosky, Art by Sister Regis and Architecture by Sister Augustine.



Seated clockwise: Patricia Braun, Charlene Stopar, Susan Johnson, Stephanie Kray, Linda Koehler, Deborah Loukota, Mary George, Laura Lamb, Margaret Stich.

Sophomores learn to give of themselves



Sophomore Class Officers, left to right: Teresa Lustic, President; Janice Heckman, Vice President; Cynthia Kessler, Secretary; Mary Kay Eckel, Treasurer.



Starting left front: Ellen Boyce, Rebecca Theodore, Deborah Schwarz, Orysia Bybyk, Michele Crippin, Janet Clary, Nancy DiFederico, Patricia Bernat.



Left to right: Catherine Beatty, Deborah Caniglia, Marjorie Abbate, Christine App, Mary Cavanaugh, Ellen Aumiller.

Counter-clockwise: Corinne Cairns, Maria Wernig, Helen Hennessy, Grazina Sviderskas.

with joy . . .

Left to right: Michele Torrance, Donna Wiandt, Deborah O'Brien, Kathleen Greissing, Rita Kalafus.



Left to right: Pamela Tate, Genevieve Vance, Claire Wilson, Louise Krupp, Louise Henry, Bernadette Winkler.



The audio-lingual method is a new dimension in language learning as instructor and French II students communicate electronically.



Patricia Garrett, Julianne Green, STANDING: Susan Bernice Finley, Cheryl Grassman, Joyce Hahn, and no.

... That joy is
their reward



Above: left to right: Victoria Smith, Diane Morris, Margaret Svetlik, Marguerite Stouthamer, Megan Tully, Catherine Sary.



Left:
bottom step to top: Patricia Zeno, Sharon Radovich, Andrea Naples, Roberta Olen, Janet McGrath, Rosalind Rowe.



Top left to bottom:
Christine Williams
Louise Giffels,
Jennifer Jones,
Christine Vassel,
Shirley Hetey.

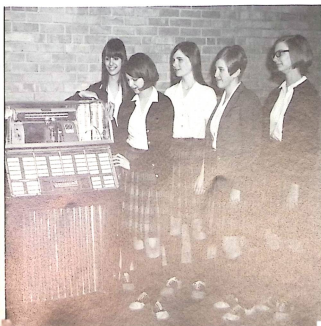
Front to back:
Marie Kidder, Andrea Kucler,
Terese Trenta, Deborah Doh-
ner, Denise Azar, Patricia
Madigan.



Below: left to right: Mary Dunbar, Candice DeLuca, Anne Clemente,
Mary Dorraugh, Susan Dye.



Below:
foreground to back: Lisa Perry, Mary Kay
Orr, Susan Traub, Anne Moriarty, Deborah
Spence, Elizabeth Wagenhoffer, Patience
O'Neil.



Left: left to right: Cheryl Palija,
Jerry Jukebox, Pauline Lagana,
Mary Underman, Christine Bernard,
Deborah Knill, Mary Rothermel.



Bottom left: Evelyn McElliott, Kathleen Quinn, Lisa Johnson, Elizabeth Wagner; Top left: Margaret Beskitt, Therese Cziraki.

Front left:
Karen Zinkann,
Maureen McGuckin,
Cynthia Bartlebaugh,
Janice Ahern,
Back left:
Gretchen Hearty,
Diana Miletta,
Denice Barnes,
Kathleen Quinn,
Patricia Martin.



For juniors, tomorrow



Left to right: Nancy Farrell, Rosemary Thompson, Phyllis Rausch, Jan Carroll.



Front: Judith Smith; Back left: Lucia Perry, Denise Friess, Nancy Adamson, Kristine Strateff, Evelyn McElliott.



Right picture
Front left:
Rebecca Madeira,
Denise Scalzo,
Susan Schobert,
Back left:
Laura Sabett,
Elizabeth Wagner,
Becky Schmidt.



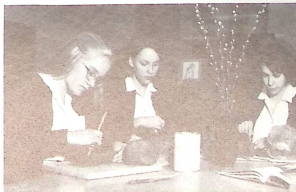
... is today's dream

Below; SEATED in front: Mary Kay York,
STANDING left to right; Eileen McGeehan,
Geraldine Wojno, Monica McDermott,
Jacqueline Glomski.



Senior Esther Beckwith (left) presents the class ring
to Junior Jura Adams during the Junior Ring
Ceremony.

Art students (left to right) Elizabeth Guldán,
Joan Wrigley and Deborah Siess explore new
media.



Today embraces the past with remembrance



Opposite
Left to right: Mary Kelly, Deborah Siess,
Ruth Casseday, Jean Baliga, Ilene Gallo.



Above
Front left: Marianne Horak, Barbara Forster, Elizabeth
Guldan; Back left: Laura Roncone, Patricia Rusyn.

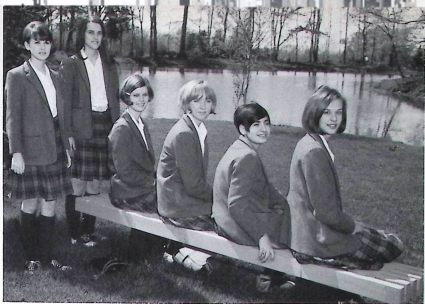


Left: Lisa Johnson and her father,
Mr. Martin Johnson, enjoy good food and
good times at the annual Father-Daughter
Banquet.



Front left: Kathleen
Knapp, Susan Salk,
Denise Zaber, Josephine
Marino; Back left:
Helen Fox, Margaret
Beskitt, Mary Cormany,
Jura Adams, Carol
Manez,

and the future with longing



Left to right: Susan Carter, Gail Phythyon, Nancy Clark, Kris Laube, Janice Hamad, Anne O'Breza.

Junior activities of the 1967-68 school year included the Ring Ceremony, in which the seniors presented the Juniors with their rings, the Christmas Cotillion, "A Moment's Ornament", and Senior Appreciation Day, highlighted by a picnic supper and the newly initiated Suste Cream-cheese Awards.



Left to right: (STANDING) Lisa Johnson, Patricia Seese (SEATED) Anne Lynett, Jeanne Spallino, Ruth Vassel.

FIRST ROW front to back: Mary Sue Hansen, Constance Griffin, Suranne Oser SECOND ROW: Cynthia Lawson, Therese Cairaki.

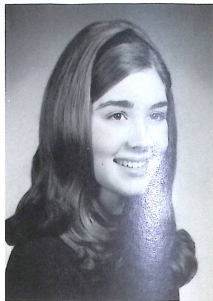
*... for yesterday is already a dream
and tomorrow is only a vision*

Class Patron: Saint Christopher
Class Flower: Yellow Rose

Senior Class President

MARY ANGELA FORSTER

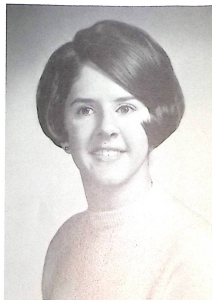
Class President 4 . . . NHS 2,3,4 . . . Student Council 3,4 . . . JCL
2 . . . Choral Choir 2,3 . . . Elm Leaf Staff 4 . . . CAU 2,3,4; Secre-
tary 3 . . . Players Guild 2,3,4 . . . Akron General Hospital Jr. Aux-
iliary 4 . . . Young Citizen's Award 4 . . . St. Edwards Home Volun-
teer 1 . . . Yearbook Staff 4.



Senior Class Vice-President

MAUREEN ELIZABETH HORAN

Class Vice-President 3,4 . . . Speech Team 4 . . . Players Guild 2,3,
4 . . . Student Council 3,4 . . . JCL 1,2 . . . Junior Achievement 3,4
. . . Children's Hospital Volunteer 3 . . . GAA 1,2,3 .



Senior Class Secretary

ESTHER MARIE BECKWITH

NHS 3,4 . . . JCL 1,2,3; Secretary 2 . . . Student Council 4 . . .
 Players Guild 2,3 . . . GAA 1 . . . CAU 1 . . . Elm Leaf Staff, page
 editor, reporter 3,4 . . . Class Secretary 3,4 . . . Hoban Homecoming
 Court; Crowner 4 . . . Children's Hospital Volunteer 3 . . . Special
 education Volunteer 3.



Senior Class Treasurer

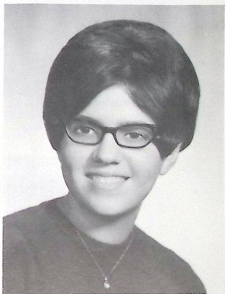
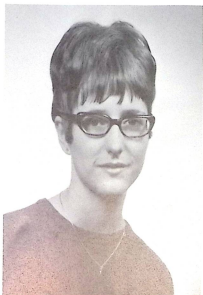
ELIZABETH JANE HENRY

Choral Choir 2,3,4 . . . CAU 4 . . . Players Guild 2,3 . . . GAA 1,2,
 3 . . . Junior Achievement 3,4 . . . Hoban Musicale 3,4 . . . Class
 Treasurer 4 . . . Akron Civic Theatre Usher 4.

Assistant Senior Class Treasurer

BEVERLY ANN AMBROSIC

Student Council 3,4 . . . Akron Teen Safety Council 4 . . . NHS 3,4
 . . . Choral Choir 2,3,4; Secretary 3 . . . GAA 1,2,3,4 . . . E award
 1,2,3,4 . . . Players Guild 2,3,4 . . . JCL 1,2,3; Treasurer 2 . . . As-
 sistant Class Treasurer 4 . . . Special Education Volunteer 4 . . .
 Hoban Musicale 1,2,3,4 . . . Elm Leaf Staff 4 . . . Championship
 Volleyball Team 4 . . . Yearbook Staff 4.

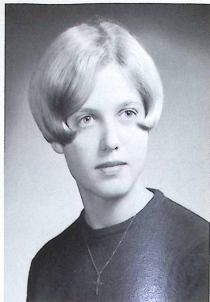


MARY DENISE BATES

Players Guild 2,3,4 . . . GAA 1,2,3,4; Representative 1 . . . Akron
 General Hospital Jr. Auxiliary 3,4 . . . Jr. Science and Humanities
 Symposium 3 . . . Choral Choir 2,3,4 . . . Hoban Musicale 2,4 . . .
 Speech Team Captain 4 . . . E award 1,2 . . . Junior Achievement
 Sales Manager 4 . . . Gym Leader 2,4 . . . Hoban J.V. Cheerleader 3;
 Varsity 4.

STEPHANIE VIRGINIA BEHRLE

NHS 2,3; Secretary 3 . . . Choral Choir 2,3,4 . . . Players Guild 2,3,4 . . . Speech Team 4 . . . Hoban Varsity Cheerleader 3 . . . Hoban Musicale 3,4 . . . Hoban Homecoming Court 4 . . . Junior Achievement 3 . . . GAA 1,2,3,4 . . . E award 1,2 . . . Children's Hospital Volunteer 3 . . . St. Edwards Home Volunteer 1 . . . Championship Volleyball Team 4 . . . Yearbook Staff 4 . . . Young Citizen's Award 3.

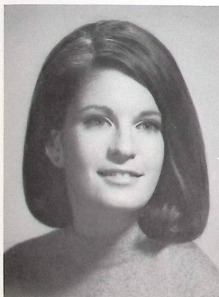
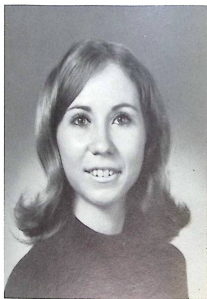


PATRICIA ANN BIANCO

Student Council 2,3 . . . Class President 2 . . . NHS 2,3,4 . . . Players Guild 2,3,4 . . . Hoban Musicale 3 . . . GAA 1,2,3,4 . . . E award 1,2,4 . . . Volleyball Team Captain 4 . . . JCL 2 . . . Elm Leaf Staff, picture editor 4 . . . Elm Tree Award 1,3 . . . Junior Achievement 3 . . . Tutorial Program 4 . . . Speech Team 4 . . . Literary Magazine Co-editor 4.

KAREN CHRISTINE BREKKE

Yearbook Staff 4 . . . GAA 1,2,3,4 . . . E award 1,2 . . . Players Guild 2,3,4 . . . Hoban Musicale 3,4 . . . Junior Achievement 3 . . . Children's Hospital Volunteer 3 . . . Speech Team 4 . . . Young Citizen's Award 3.



PATRICIA ANN BRENNAN

Polsky's Team Fashion Board; Seventeen Representative 4 . . . GAA 1,2,4 . . . Varsity Basketball Team 1,2,3,4 . . . Junior Achievement, Secretary 3 . . . Players Guild 2 . . . St. Edwards Home Volunteer 2 . . . Yearbook Staff 4 . . . E award 1,2.



REBECCA LYNN BUEHRLE

Akron General Hospital Pinafore 4 . . . Akron General Hospital Jr. Auxiliary 4 . . . Choral Choir 2,3,4 . . . Hoban Musicale 2,3,4 . . . Junior Achievement 3,4; Treasurer 4 . . . Home Ec. Club 3 . . . GAA 2,4 . . . Players Guild 2,3 . . . Gym Leader 4 . . . E award 1,4 . . . Young Citizen's Award 4.



MARYANN ELIZABETH CAHILL

Junior Achievement 4 . . . Tutorial Program 4 . . . Players Guild 4 . . . CYO; Officer 3,4 . . . Choral Choir 4.



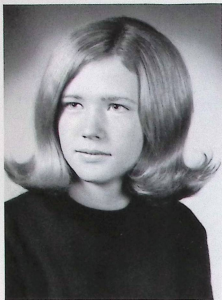
PATRICIA ANN CAMPBELL

NHS 2,3,4; Treasurer 3 . . . Choral Choir 2,3,4 . . . Class Treasurer 3 . . . Players Guild 2,3,4 . . . Junior Achievement 3 . . . Children's Hospital Volunteer 3 . . . Young Citizen's Award 3 . . . Hoban Musical 3 . . . Elm Tree Award 3 . . . GAA 1,2,3,4 . . . E award 1,2 . . . Championship Volleyball Team 4 . . . American Institute of Foreign Study, Dijon, France 3 . . . French Department Assistant 4 . . . St. Edwards Home Volunteer 1.



BERNADETTE CARCIONE

Yearbook Staff Co-editor 4 . . . Players Guild 2,3,4 . . . School Play 2 . . . Hoban Musicale 3 . . . GAA 1,2,3,4 . . . E award 1,2,4 . . . JCL 2 . . . Junior Achievement 3 . . . Elm Leaf Staff 4 . . . Tutorial Program 4 . . . Speech Team 4 . . . U.B. Correspondent 4.



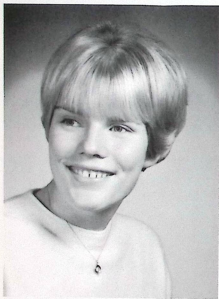
PATRICIA ANNE COSTIGAN

GAA 1,2,3,4 . . . Varsity Basketball Team 3,4 . . . E award 1,2,3,4
 . . . Players Guild 2,3 . . . St. Edwards Home Volunteer 1 . . . Home
 Ec Club 4 . . . Hoban Musicale 3,4 . . . Gym Secretary 3 . . . Junior
 Achievement 3.



KAREN SUE CRUM

GAA 2,3,4 . . . Players Guild 3,4 . . . Intramural Volleyball 3,4 . . .
 Elm Leaf Staff Exchange Editor 4 . . . Home Ec Club 4.



NANCY LOUISE CUNNINGHAM

Student Council 2,4 . . . Players Guild 2,3,4; Vice President 4 . . .
 GAA 1,2,3,4; Executive Board 2,3; Treasurer 3 . . . Hoban Home-
 coming Court 4 . . . Junior Achievement 3,4 . . . St. Thomas Hospi-
 tal Volunteer 3,4 . . . Young Citizen's Award 3 . . . St. Edwards
 Home Volunteer 3,4 . . . Speech Team 4 . . . Choral Choir 2 . . .
 Varsity Basketball Team 2,3,4.

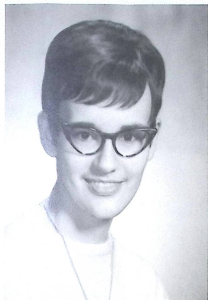


CAROLYN DE GREGORY

Class Vice-President 1 . . . Players Guild 2,3,4; Treasurer 3; Presi-
 dent 4 . . . NHS 2,3,4 . . . CAU 1,2,3,4 . . . Choral Choir 3,4 . . .
 GAA 1,2,3,4 . . . Elm Leaf Staff 3,4; Co-editor 3; Page editor 4 . . .
 Elm Tree Award 1,2,3 . . . Jr. Science and Humanities Symposium 2
 . . . K.S.U. High School Press Institute 2 . . . Varsity Basketball
 Team 1,2 . . . Young Citizen's Award 1 . . . 11th Place State
 Scholarship Test, French I . . . State Scholarship Test, French II,
 Honorable Mention.

MARY FRANCES DETTLING

JCL 1,2 . . . GAA 1,2,3,4; Representative 2,3 . . . Varsity Basketball Team 1,2,3,4 . . . E award 3,4 . . . Junior Achievement 3,4 . . . St. Edwards Home Volunteer 1 . . . Hoban Musicale 3,4 . . . Home Ec Club 4.

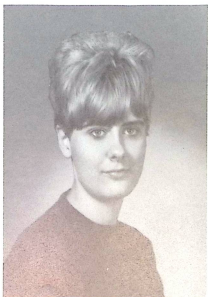
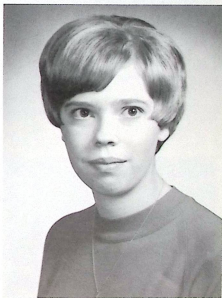


DONNA LYNNE DOWNING

NHS 3,4 . . . Players Guild 2,3,4 . . . GAA 1,2,3,4 . . . JCL 1,2 . . . Barberton Citizen's Hospital Volunteer 4 . . . Championship Volleyball Team 4 . . . Hoban Musicale 2,3,4 . . . Elm Tree Award 2,3 . . . CAU 4 . . . E award 1,2,3,4 . . . Choral Choir 2,3,4.

DONNA JEANNE ELSNER

NHS 2,3,4 . . . JCL 1,2 . . . A.S.P.L. Certificate 1 . . . GAA 2,3 . . . Players Guild 2 . . . E award 1,2 . . . Elm Tree Award 1,2,3 . . . Junior Achievement, Assistant Treasurer 3 . . . CAU 1 . . . Literary Magazine Co-editor 4.

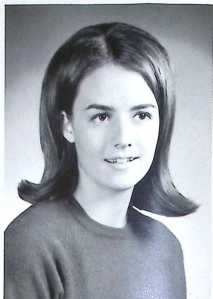
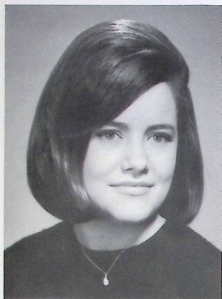


LINDA SUE EVANS

Players Guild 2,3 . . . GAA 2,3 . . . Home Ec Club 4 . . . St. Thomas Hospital Volunteer 3,4 . . . Junior Achievement 3,4; Assistant Treasurer 3; Vice-President 4 . . . Yearbook Staff 4 . . . Young Citizen's Award 4 . . . Gym Leader 4 . . . E award 4.

KATHLEEN TERESA FINN

GAA 1,2,3,4 . . . Players Guild 2 . . . JCL 2 . . . NHS 2,3,4; Vice-President 4 . . . Student Council 3 . . . Class Treasurer 3 . . . E award 1,2,3 . . . Elm Tree Award 1,2,3 . . . Jr. Science and Humanities Symposium 2 . . . National Science Foundation Summer Program 3 . . . Junior Achievement 3 . . . Young Citizen's Award 3 . . . Children's Home Volunteer 2 . . . St. Edwards Home Volunteer 1 . . . National Merit Semi-Finalist 4 . . . 13th place State Scholarship Test, World History 1 . . . 22nd place State Scholarship Test, Geometry 2.

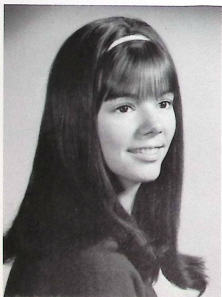


GERIANNE CATHERINE FLECHLER

GAA 1,2,3,4 . . . Players Guild 2,3 . . . St. Edwards Home Volunteer 1,2 . . . CCD Assistant Teacher 4 . . . Certificate of Merit 1 . . . Home Ec Club 4.

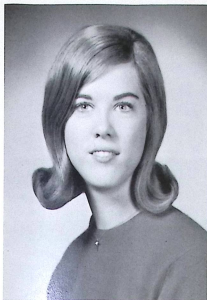
JOANNE ELIZABETH GEORGE

Yearbook Staff, Co-editor 4 . . . Choral Choir 2,3,4 . . . GAA 1,2,3,4 . . . Players Guild 2,3,4 . . . Home Ec Club 4 . . . Junior Achievement 3 . . . Hoban J.V. Cheerleader 3 . . . Hoban Musicale 3 . . . Elm Leaf Staff 4 . . . E award 1.



DONNA MARIE GILLESPIE

St. Edwards Home Volunteer 1,2 . . . GAA 1,2,3,4 . . . Players Guild 2,3 . . . Home Ec Club 4 . . . E award 1,2,3.



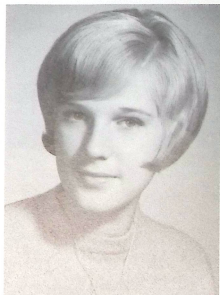
KATHLEEN MARIE GOREY
CAU 3,4 . . . Choral Choir 2,3,4 . . . Home Ec Club; Vice-President
4 . . . Hoban Musicales 2,3,4 . . . St. Thomas Hospital Volunteer 2,3
. . . Junior Achievement 3,4 . . . GAA 1,2,3,4 . . . Players Guild
2,3,4.



ANN ELIZABETH HAMLIN
GAA 1,2,3,4; Representative 1 . . . Players Guild 2,3,4 . . . Junior
Achievement; Treasurer 3 . . . Tutorial Program 4 . . . Yearbook
Staff 4 . . . E award 1,2 . . . Elm Leaf Staff 3,4; Page Editor 4 . . .
Hoban Musicales 3,4 . . . French Department Assistant.



DIERDRE HARRIS
Players Guild 2,3,4 . . . Choral Choir 2 . . . GAA 1,2 . . . Elm Leaf
Staff 4 . . . Junior Achievement 3 . . . Tutorial Program 3,4 . . .
Home Ec Club 4 . . . Akron General Hospital Volunteer 4 . . . St.
Edward's Home Volunteer 4.

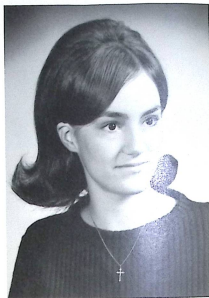


JUNE ELIZABETH HEIL
Players Guild 2,3,4 . . . GAA 1,2,3,4 . . . Junior Achievement; Sec-
retary 3 . . . Student Volunteer 4 . . . Gym Leader 3 . . . Choral
Choir 2,3 . . . St. Edwards Home Volunteer 1,2.



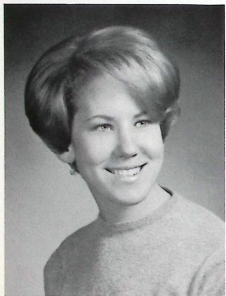
SARA NEIL HOLLINGSHEAD

Players Guild 2,3,4 . . . GAA 1,2,3,4 . . . JCL 1,2 . . . Home Ec Club 4 . . . Junior Achievement 3,4; Secretary 4 . . . Gym Leader 4 . . . Yearbook Staff 4.



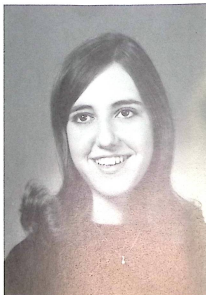
KATHRYN M. HRANILOVICH

Elm Tree Award 3 . . . Akron General Hospital Volunteer 3 . . . GAA 1,2,3,4 . . . Players Guild 1,2,3,4 . . . Speech Team 4.



BONNIE LEAH HUNT

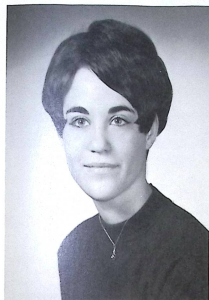
NHS 2,3,4 . . . GAA 1,2,3,4 . . . Players Guild 1,2 . . . Elm Leaf Staff; Page Editor 3; Editor 4 . . . Class Treasurer 1.



MARILYN CECILIA KASARDA

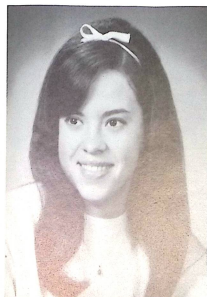
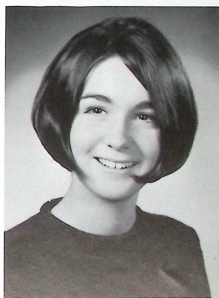
NHS 3,4 . . . Players Guild 2,3 . . . GAA 1,2,4 . . . E award 2 . . . Junior Achievement 3 . . . JCL 1 . . . Yearbook Staff 4 . . . St. Thomas Hospital Volunteer 3,4 . . . Home Ec Club 4 . . . O'Neil's Fashion Sewing Board 4 . . . Elm Tree Award 3 . . . Young Citizen's Award 4.

ROSEANNA KELLY
GAA 2,3 . . . Home Ec Club 3,4 . . . Home Ec Style Show 3,4.



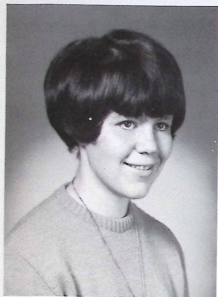
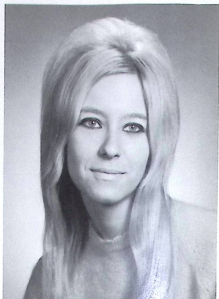
PAMELA CLAIRE KORTE
Elm Leaf Staff 3,4 . . . Choral Choir 2,3,4 . . . CAU 1,2,3,4 . . .
Players Guild 4 . . . Service Award 1 . . . Medina Community Hospi-
tal Volunteer 3 . . . Medina Memorial Pool WSA Volunteer 2,3.

DONNA MARY MACK
JCL 1,2,3 . . . Choral Choir 2 . . . GAA 1 . . . Players Guild 2.



ANA LILA MARTINEZ
Foreign Exchange Student from El Salvador 4 . . . Student Council
Honorary Member 4 . . . Junior Achievement 4 . . . Penny Princess
4 . . . Speech Team 4 . . . GAA Honorary Member 4 . . . Home Ec
Club 4.

LOUISE ANTOINETTE MASINO
Home Ec Club 3,4 . . . GAA 1.



PATRICIA MARIE McNAIR
CAU 1,2,3,4; Vice-President 4 . . . Choral Choir 2,3,4 . . . Players
Guild 2,3,4 . . . GAA 1,2,3,4 . . . Hoban Musicales 3,4 . . . Junior
Achievement 3,4 . . . Speech Team 4 . . . Yearbook Staff 4.

MARILYN JO MILLER
CAU 1,2,3,4; Treasurer 3 . . . Elm Leaf Staff, Reporter 3,4 . . . GAA
1,2,3,4 . . . Home Ec Club 4 . . . Junior Achievement, Secretary 3,4
. . . Players Guild 2,3,4 . . . Student Council 4 . . . Tutorial Pro-
gram 4.

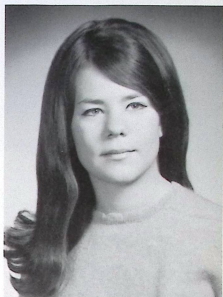


MARILYN LOUISE MOHRMAN
Student Council 3 . . . NHS 3,4; President 4 . . . CAU 2,3,4 . . .
Players Guild 3,4; Secretary 2 . . . Choral Choir 3,4 . . . Class Sec-
retary 2 . . . National Merit Letter of Commendation 4 . . . Tutorial
Program 4 . . . Varsity Basketball Team 2,3,4 . . . Gym Leader 4
. . . CYO Secretary 3; Vice-President 4 . . . Akron Teen Safety
Council 3.



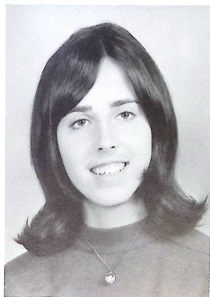
MARY EILEEN O'CONNOR

Student Council 3,4; Treasurer 3; Vice-President 4 . . . GAA 1,2,3,4 . . . Choral Choir 2,3,4 . . . Saint Nick 4 . . . Junior Christian Interracial Council 2,3,4 . . . Tutorial Program 3.



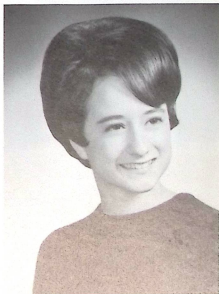
JEAN MICHELLE O'NEIL

Elm Tree Award 1,2 . . . GAA 1,2,3,4 . . . Players Guild 2,3,4 . . . Akron General Hospital Jr. Auxiliary Board 3,4 . . . Junior Achievement 3 . . . Varsity Basketball Team 3 . . . Hoban Musicales 3 . . . Junior Science and Humanities Symposium 2 . . . E award 1,2.



PALMER ELIZABETH PETERS

GAA 1,2,3,4 . . . Championship Volleyball Team 4 . . . E award . . . Gym Leader 2 . . . Players Guild 2,3,4 . . . Junior Achievement; Treasurer 3,4 . . . St. Edwards Home Volunteer 1,2,3 . . . CAU 1,2 . . . Happy Days Camp Volunteer 2,3 . . . Young Citizen's Award 3.

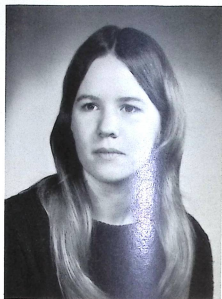


JACQUELINE ANN POWELL

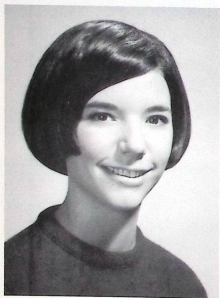
Elm Leaf Staff 3,4; Business Editor 4 . . . Akron Beacon Journal Correspondent 4 . . . Yearbook Staff 4 . . . Speech Team 4 . . . Home Ec Club 4 . . . Co-ed Correspondent 4.



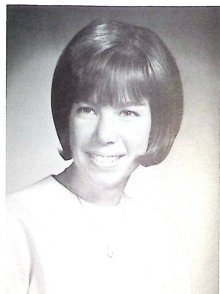
ANNETTE LOUISE RACANO
GAA 1,2,3,4 . . . Choral Choir 2,3,4 . . . CAU 1,2,3 . . . Players
Guild 2,3 . . . Home Ec Club 4.



MARY A. REES
Players Guild 3,4 . . . JCL 1,2 . . . Home Ec Club 4 . . . Summit
County Tutorial Program 2,4 . . . St. Edwards Home Volunteer 1 . . .
CAU 2,3 . . . CYO 1,2,3,4; Vice-President 4.



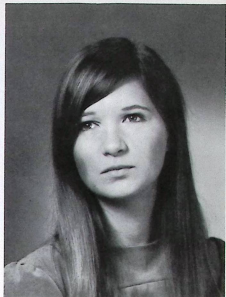
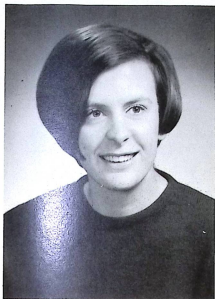
POLLY JANE RICCARDI
GAA 2,3,4 . . . Players Guild 2,3,4 . . . Junior Achievement 3 . . .
E award 3 . . . Home Ec Club 4; President 4 . . . Elm Leaf Staff 3,4.



PATRICIA ANN RICHARDS
GAA 1,2,3,4; President 4 . . . Players Guild 2,3,4 . . . Varsity Hockey
Team 2 . . . Varsity Basketball Team 1,2,3 . . . Junior Achievement;
Treasurer 3,4 . . . Elm Leaf Staff; Photographer 2,3,4 . . . Yearbook
Staff 4.

ANNE MARIE ROHNER

GAA 1,2 . . . Junior Achievement 3 . . . St. Edwards Home Volunteer
1,2 . . . Stan Hywet Volunteer Guide 3,4 . . . Choral Choir 2,3,4
. . . Players Guild 2,3 . . . Young Citizens Award 4.



MARCIA K. SAMELS

Junior Achievement 3,4 . . . GAA 1,2,3,4 . . . Home Ec Club 4 . . .
Players Guild 2,3 . . . Service Award 2.

DIONNE RENEE SCALZO

GAA 1,2,3,4 . . . Players Guild 2,3,4 . . . E award 1 . . . St. Edwards
Home Volunteer 1 . . . Tutorial Program 4 . . . Junior Achievement
3.

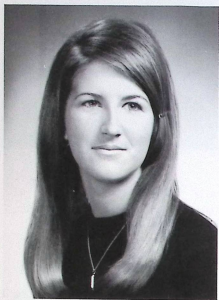


CHRISTINE VITTORIA SCARPITTI

Student Council 3,4 . . . Class Vice-President 2 . . . Class Treasurer
1,3 . . . Players Guild 2,3,4 . . . GAA 1,2,3,4 . . . Elm Leaf Staff 4
. . . Junior Achievement 3,4; Personnel Advisor 4 . . . Children's
Home Volunteer 1.

SUE ELAINE SCHADL

Student Council 2,3,4; President 4 . . . Class President 3 . . . CAU 2, 3,4 . . . GAA 1,2,3,4 . . . Players Guild 2,3,4 . . . NHS 3,4 . . . E award 1,3,4 . . . J.V. Basketball Team 3 . . . Elm Tree Award 3 . . . Elm Leaf Staff 3,4; Editorial Page Editor 4 . . . Yearbook Staff 4 . . . Tutorial Program 4 . . . Barberton Citizens Hospital Volunteer 4 . . . Young Citizen's Award 4 . . . Championship Volleyball Team 4.

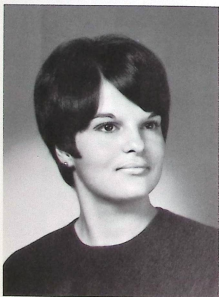


MELISSA ANNE SCHREINER

GAA 1,2,3,4 . . . Elm Leaf Staff 4 . . . Home Ec Club 4 . . . Junior Achievement 3,4; Secretary 4 . . . St. Edwards Home Volunteer 1 . . . O'Neil's Fashion Board Representative 4.

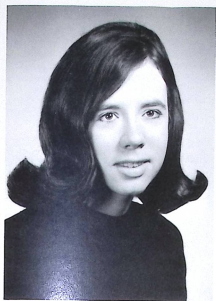
BEVERLY JEAN SMITH

Choral Choir 2,3,4; Vice-President 4 . . . WAKR Teen Advisory Board 2,3,4; Secretary 3 . . . Players Guild 2,3,4 . . . GAA 2,3,4 . . . Akron Recreation Dept. Volunteer 4 . . . Home Ec Club 4.



PRISCILLA EILEEN SMITH

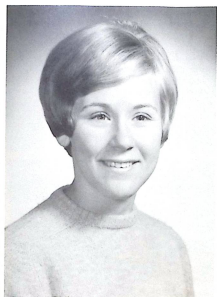
GAA 1,2,3,4 . . . Players Guild 2,3,4 . . . Home Ec Club 4 . . . Choral Choir 2,3,4 . . . Junior Achievement, Vice-President of Sales 3 . . . St. Edwards Home Volunteer 1 . . . Hoban Musicale 3,4.



KATHRYN RYAN STAFFORD
 NHS 3,4 . . . Players Guild 2,3,4 . . . GAA 2,3,4 . . . JCL 1,2 . . .
 Choral Choir 2,3,4; Treasurer 4 . . . Junior Achievement; Vice-
 President of Production 3 . . . Elm Tree Award 3.



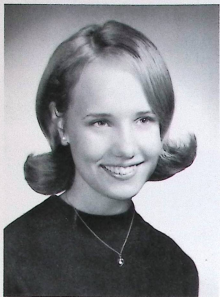
CHRYSTINE MARIA STRILECKY
 NHS 3,4 . . . Choral Choir 2,3,4 . . . Players Guild 2,3 . . . GAA 1,2,
 3 . . . JCL 2.



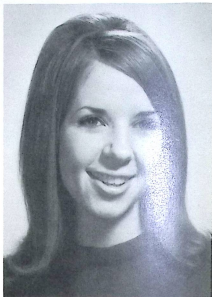
PAULINE ANN TULLY
 GAA 1,2,3,4; Representative 1,3,4 . . . Players Guild 2,3,4 . . .
 Varsity Hockey Team 2 . . . Varsity Basketball Team 3 . . . Junior
 Achievement 3,4; Treasurer 4 . . . Tutorial Program 4 . . . Hoban
 Musicale 4 . . . E award 1,2,3,4.



MELISSA ANN UNDERMAN
 CAU 2,3,4; President 4 . . . Choral Choir 2,3,4 . . . Players Guild 2,
 3,4 . . . GAA 1,2,3,4; Representative 1 . . . E award 1,2,3,4 . . .
 Elm Leaf Staff, Page Editor 4 . . . St. Thomas Hospital Volunteer 3
 . . . Hoban Varsity Cheerleader 3 . . . Junior Achievement, Company
 Officer 3,4 . . . Miss J. A. Court 3 . . . Tutorial Program 2 . . .
 Hoban Musicale 2 . . . Gym Leader 4 . . . SSCA Chicago 3.



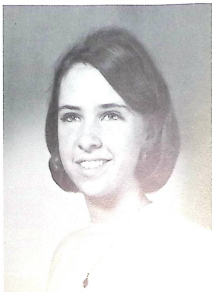
JACQUELINE MARIE VORNDRAN
 NHS 2,3,4; Secretary 3 . . . National Merit Letter of Commendation
 4 . . . Student Council 2 . . . Hoban Musicale 3,4 . . . Junior
 Achievement, Secretary 3 . . . JCL 1,2; Vice-President 2 . . .
 Players Guild 2 . . . GAA 1 . . . CYO Vice-President 2 . . . St.
 Edwards Home Volunteer 2.



CATHERINE MARGARET WALSH
 GAA 1,2,3,4 . . . Players Guild 1,2,3,4 . . . Choral Choir 3,4 . . .
 Junior Achievement 3 . . . Children's Hospital Volunteer 2 . . . E
 award 1,2,3,4 . . . Hoban Musicale 3,4 . . . Home Ec Club 4 . . .
 Elm Tree Award 3.

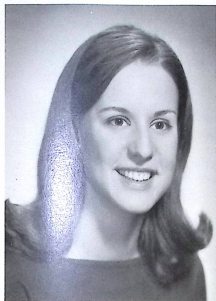


MAUREEN T. WALSH
 NHS 2,3,4 . . . Players Guild 2,3,4 . . . CAU 1,2,3,4 . . . SSCA
 Chicago 2 . . . GAA 1,2,3,4 . . . Gym Leader 2,3 . . . E award 1,2,
 3,4 . . . Championship Volleyball Team Captain 4 . . . Choral Choir
 Accompanist 3 . . . Yearbook Staff 4 . . . Elm Tree Award 1 . . .
 French Department Assistant 4 . . . American Institute of Foreign
 Study, Dijon, France 3 . . . National Merit Letter of Commendation
 4 . . . Advanced Algebra State Scholarship Test; Honorable Mention
 3.



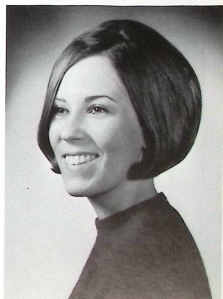
JANE ANN WARNER
 NHS 3,4 . . . Choral Choir 2,3,4 . . . Championship Volleyball Team
 4 . . . GAA 1,2,3,4; . . . Hoban Musicale 3,4 . . . Candy Striper 2
 . . . JCL 1,2 . . . Young Citizen's Award 2 . . . E award 1.

PAMELA YVONNE WIANDT
 GAA 1,2,3,4 . . . Players Guild 2,3 . . . E award 1,3,4 . . . Home Ec
 Club 4 . . . St. Edwards Home Volunteer 1 . . . Junior Achievement
 3 . . . Graphic Arts Club 1,2 . . . Varsity Basketball Team 3,4.



MARY WILLIAMS
 Student Council 2,3,4; Secretary 3 . . . NHS 2,3,4 . . . Choral Choir
 Accompanist 2,3,4 . . . Choral Choir President 4 . . . Class President
 1 . . . Elm Tree Award 2 . . . Service Award 3 . . . GAA 2,3,4 . . .
 CAU 2,3,4 . . . Players Guild 2,3,4 . . . Yearbook Staff 4 . . . Akron
 General Hospital Jr. Auxiliary 4 . . . JCL 1,2; President 2 . . .
 Championship Volleyball Team 4.

PATRICIA LEE ZINSMAYER
 GAA 1,2,3,4 . . . Elm Leaf Staff, Page Editor 4 . . . Junior Achieve-
 ment, Assistant Treasurer 4 . . . Choral Choir 2,3.



*. . . but today, well lived,
 makes every yesterday
 a dream of happiness,
 and every tomorrow*

—a vision of hope

The



Above: On their marks, the track team is, left to right, Christine Vassel, Deborah Richards, Denise Scalzo, Linda Zimmerman, Monica Jean Ambrosic.

Right: In the final volleyball tournament juniors (left to right) Anne Lynett, Elizabeth Wagner and Susan Schobert, fight it out with their arch-rivals seniors (left to right) Stephanie Behrle, Beverly Ambrosic, and Mary Williams.

Below: Freshmen spirit keeps the tournament time at a peak.



Right: Christine Vassel practices her tennis form as she serves the ball.



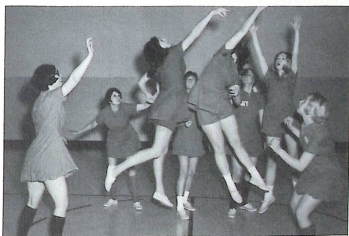
glory of action sparks athletic program



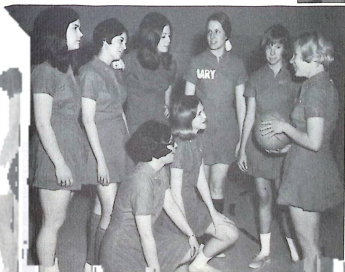
Right: Some members of the All-Star team work out during a pre-game scrimmage.



Above: Archery was resumed this year under Miss Cleveland, physical education instructor. Left to right are Patricia Campbell, Cheryl Grassman, Ellen Aumiller and Julianne Green.



Left: Players, left to right, are Mary Dettling, Priscilla Smith, Patricia Brennan, Mary Williams, Pat Richards; KNEELING, Maureen Walsh and Patricia Costigan. STAND-ING far right is captain Pauline Tully.



Students find diversity in extra-curricular



Left: working on the Literary Magazine are National Honor Society members (clockwise) Kathryn Stafford, Nancy Di-Federico, Marilyn Mohrman, Kathleen Finn and Donna Elsner and Patricia Bianco co-editors of the Literary Magazine.

Right: Sister Angela and Phyllis Bruno help to make-up Marianne Hall and Rebecca Buehrle for their performance in "The Sound of Music".



Below: Lucia Perry pauses for refreshments at the Christmas Cotillion.

Right: "A Moment's Ornament," the Junior-Senior Cotillion provided a romantic setting for Pamela Korte and her escort.



ar activities

Right: Lisa Johnson, Canon George Budimic and Monsignor Edward A. Wolf assist Bishop Clarence G. Isenman in dedicating the new high school.



Right: Miss Anne Culkin captures the attention of her audience with her lectures on charm and personality.



Below: Avid admirers surround the Chylds as they provide the beat for the Senior Dance.

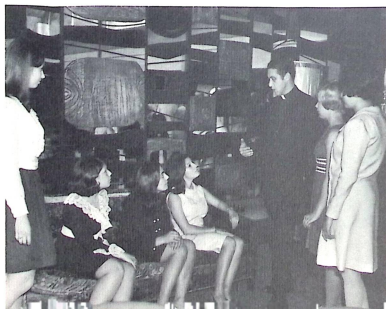


And this light— it now remains for us to

Below: The '68 graduates establish a new tradition by holding May Crowning in the theatre.

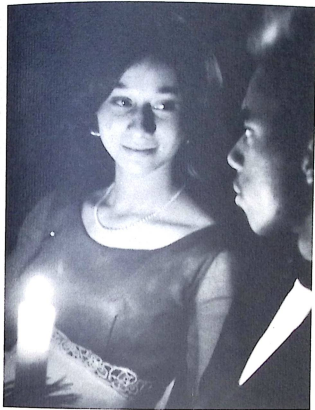


Right: Seniors, left to right, Catherine Walsh, Bernadette Carcione, Joanne George, Patricia Bianco, Pauline Tully and Priscilla Smith talk with the Rev. John Egan O.P., Retreat Master, after the May Breakfast.

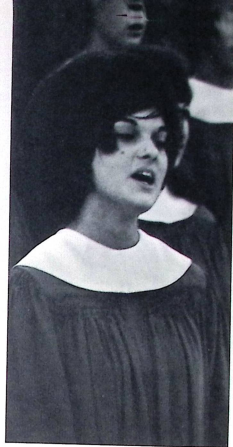


use it and diffuse it

Below: Marilyn Miller and her escort at the Christmas Cotillion.



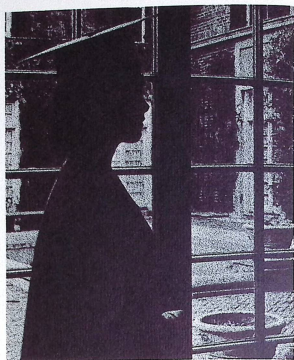
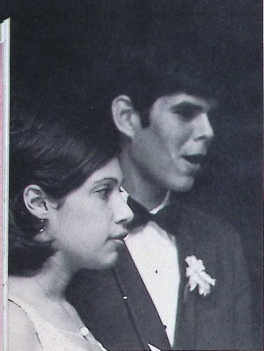
Right: Annette Racano sings a solo at the Christmas Choral Concert presented in the Summit Mall.



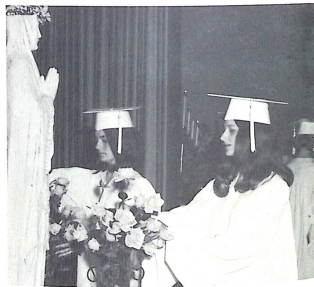
For a Senior the year is filled with so many things:
Her excitement at the Christmas Concert,
Her eyes fixed so gently on her date
at the Cotillion,
The happiness of being with her mother
at a breakfast at Silver Lake,
And the sentimental feeling she gets when
she's in her cap and gown.
What is the school year for a Senior? . . .
So many things.



Left: Chatting after the May Breakfast are, clockwise, Maureen Walsh, Stephanie Behrle, Mrs. Herman Behrle, Mrs. William Campbell, Patricia Campbell and Mrs. William Walsh.



Look well, therefore, to this day!



The close of a school year--
A Senior's final days that can be
missed if she blinks her eyes.

How can she cram all her carefree
years into the few remaining days?

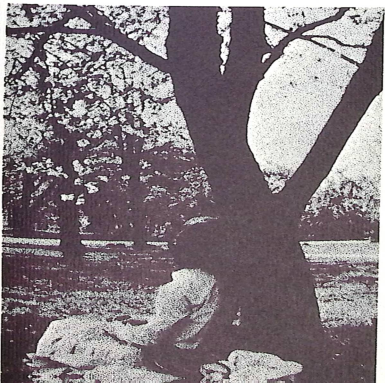
May Crowning is the beginning of
that marathon of emotion. The
gown feels soft on her shoulders,
the cap a little hard on her hairdo
--but she begins to know what it
means to be a graduate.

Then the ultimate . . . graduation
. . . it's not as bad as she suspected,
but come September she remem-
bers she won't be back with the
same girls she had come to know
so well.

It's all over, but there's still prom.
That gay event that ends the
whole year so beautifully.
Till we meet again . . . SHALOM



such is the salutation of th



PATRONS

Mr. and Mrs. A. R. Abbate*
 Mr. and Mrs. Wm. J. Ambrosic*
 Mr. and Mrs. H. L. Bates*
 Mr. and Mrs. C. Herman Behrle*
 Phyllis Behrle*
 Mr. and Mrs. Harvey Beckwith*
 Michael C. Bianco, M.D.*
 Dr. and Mrs. N. C. Bianco*
 Mr. and Mrs. Palmer O. Brekke*
 Mr. and Mrs. Daniel C. Brennan*
 Mr. and Mrs. Robert S. Bruno*
 Mr. and Mrs. R. L. Buehrle*
 Mr. and Mrs. Francis Burger*
 Cahill Family*
 Mr. and Mrs. Wm. H. Campbell*
 Mr. and Mrs. John Carcione*
 Christian Action Unit
 Choral Choir
 Class of '68*
 Class of '69*
 Class of '70*
 Class of '71*
 Colonial Heritage Life Insurance
 Leroy, Ohio
 Mr. and Mrs. Wm. J. Costigan
 Mr. and Mrs. Eugene A. Crum*
 Mr. and Mrs. Wm. W. Cunningham*
 Mr. and Mrs. Frank Cziraki
 Mr. and Mrs. Andrew F. De Gregory
 Mr. and Mrs. Raymond J. Dettling
 Mr. and Mrs. John M. Doran*
 Mr. and Mrs. F. H. Dorraugh
 ELM LEAF
 Mrs. M. J. Evans*
 Mr. and Mrs. Charles Elsner*
 Mrs. Gerald Finn*
 First Flooring & Tile*
 Mr. and Mrs. Norman Flechler*
 Dr. and Mrs. Michael Forster*
 A Friend
 Mr. and Mrs. Fred Fusco
 Mr. and Mrs. Kenneth I. Gillespie
 Mr. Anthony P. George*
 Girls Athletic Association*
 Mr. and Mrs. John P. Gorey
 Mr. and Mrs. John A. Guldán*
 Mr. and Mrs. E. W. Hamlin*
 Mr. and Mrs. Harry Hamad
 Mr. and Mrs. Wm. R. Harris
 Mr. and Mrs. Paul H. Heil*
 Mr. and Mrs. F. D. Hennessy, Jr.*
 William F. Henry
 Hollingshead Family*

Homeroom 216--Class of '70
 Homeroom 200--Class of '70
 Anthony J. Horak*
 Mr. and Mrs. Phillip G. Horan*
 Dr. and Mrs. George Hranilovich
 Mr. and Mrs. H. E. Hunt*
 Mr. and Mrs. Edmund Ivory
 Mr. and Mrs. George Kasarda*
 Mr. and Mrs. Fred Kelly, Sr.*
 Mr. and Mrs. John D. Korte
 Mr. and Mrs. James T. McGrath
 Mr. and Mrs. A. J. McNair*
 Mr. Charles Masino
 Mr. and Mrs. George C. Miller*
 Mr. and Mrs. Raymond Mohrman*
 National Honor Society
 Mr. and Mrs. Wm. J. O'Neil*
 Mr. and Mrs. James O'Rourke
 Pat and Ron
 Mr. and Mrs. E. F. Peddle*
 Mr. and Mrs. John G. Peters, Jr.
 Players Guild
 Mr. and Mrs. Jack W. Powell*
 Mr. and Mrs. Bart Racano
 Wilson D. Rees, M.D.*
 Mr. and Mrs. Wm. C. Richards*
 Mr. and Mrs. Ralph J. Rohner*
 Mrs. Alexander Russell
 Marcia Samels
 Mr. Dominic Scalzo*
 Mr. and Mrs. Vincent Scarpitti*
 Mr. and Mrs. John Schadt*
 Mr. and Mrs. R. D. Schobert*
 Rudy "Neat" Schwak
 Mr. and Mrs. Hal Smith
 Mr. and Mrs. Wm. G. Smith*
 Mr. and Mrs. D. K. Stafford
 Steen Electric, Inc.*
 Mr. and Mrs. Strilecky
 Student Council*
 Dr. E. P. Suchard*
 Mr. and Mrs. B. E. Torrance
 Mr. and Mrs. John M. Traub
 Mr. and Mrs. Patrick F. Tully*
 Mr. and Mrs. Fred Underman*
 Mr. and Mrs. John A. Vorndran*
 Mr. and Mrs. Raymond M. Walsh*
 Mr. and Mrs. Wm. A. Walsh*
 Mr. and Mrs. James A. Warner
 Mr. C. A. Williams*
 Mr. Dudley A. Williams*
 Williams Family
 Mr. and Mrs. E. V. Zimmerman

Asterisk indicates \$10.00 patron

