



ROWLEY ARCHDALE,  
MOTOR ENGINEER,  
14-15, BISHOPTON LANE,  
STOCKTON-ON-TEES

*Gordon Bodies*  
on  
*Austin Chassis*

ROWLEY ARCHDALE,  
MOTOR ENGINEER,  
14-15, BISHOPTON LANE,  
STOCKTON-ON-TEES.

*Gordon & Co.*

1939 SEASON

ROWLEY ARCHDALE,  
MOTOR ENGINEER,  
14-15, BISHOPTON LANE,  
STOCKTON-ON-TEES.



**AUSTIN MOTOR CO. LTD.** *Longbridge, Birmingham*  
G.P.O. Box 41

Phone: PRIORY 2101 (20 lines) Grams: "SPEEDILY, TELEX, NORTHFIELD" Cables: "SPEEDILY, BIRMINGHAM, ENGLAND" Code: BENTLEY'S

479-483 OXFORD STREET, LONDON, W.1  
(Near Marble Arch)

Grams: "AUSTINETTE, TELEX, LONDON." Phone: MAYFAIR 7620 (18 lines)

HOLLAND PARK HALL, HOLLAND  
PARK AVENUE, LONDON, W.11

All Coachwork illustrated in this Catalogue is manufactured by  
the undermentioned Company, who accept all responsibility.



**GORDON & CO.** *Taunton Road, Sparkbrook, Birmingham, 12*

TELEPHONE: SOUTH 3273-4

TELEGRAMS: "SUITES, BIRMINGHAM"

1938-1939 THIS CANCELS ALL PREVIOUS LISTS

**CORDON** *Bodies*



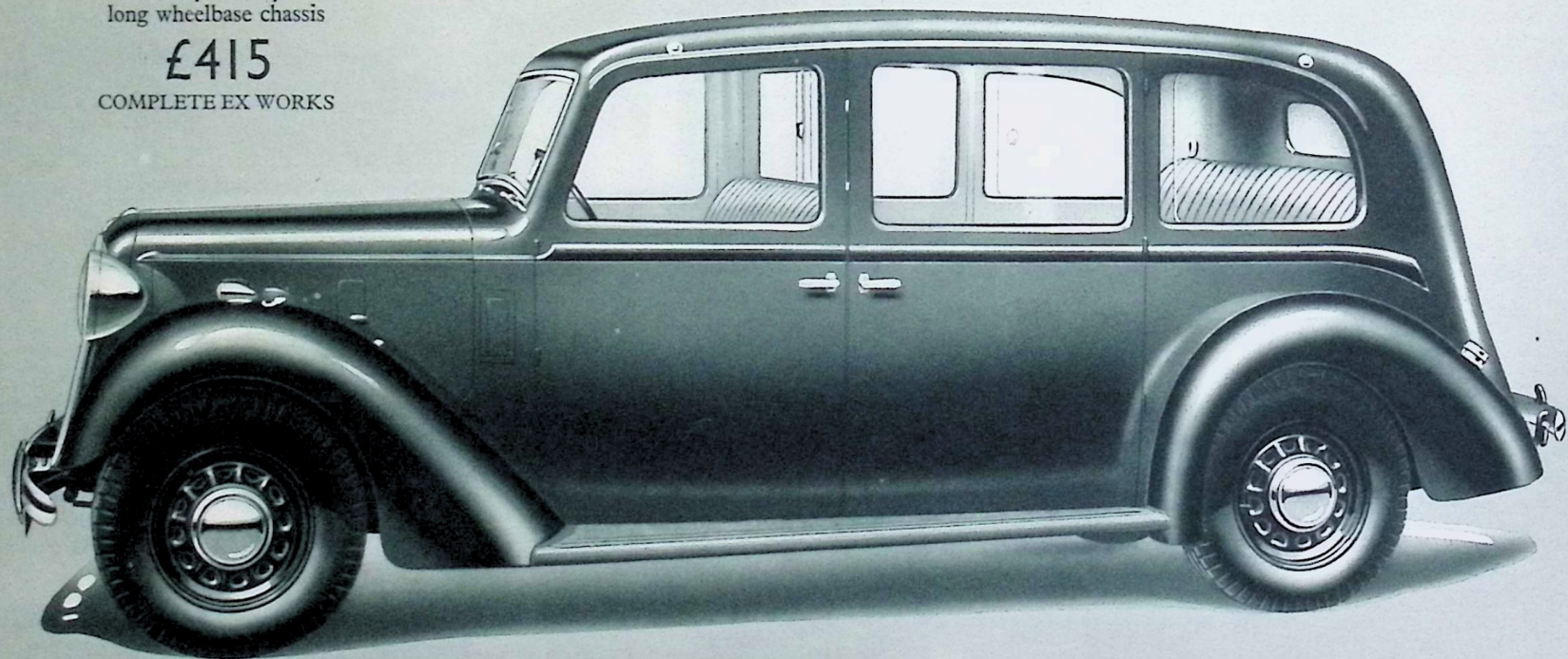
*on* **AUSTIN** *Chassis*



18 h.p. 6-cyl.  
long wheelbase chassis

**£415**

COMPLETE EX WORKS



# ROYAL *Enclosed Limousine de Luxe*

The "Royal" Limousine is built on the Austin long 18-h.p. Chassis, and is specially designed to seat eight people, if necessary. It has the Gordon feature of extra high and wide doors; more than average head and leg room, and the auxiliary seats, when in use, form one seat. There is a sliding glass partition between the front and rear, and a central control sliding roof to the rear compartment. There are four adjustable frameless windows. The rear quarter Glasses are sliding. The single-panel windscreen is fitted with a patent central adjustable fitting, and can be opened to an angle of 45°; it automatically adjusts itself to any position. Twin Electric Wipers and Interior Visors. Toughened Safety Glass is fitted throughout, and the backlight is of dazzleproof glass. The rear seat has a folding central arm rest in addition to the side ones, and folding footrests. There are flush-fitting self-cancelling trafficators, and bumpers front and rear. The spare wheel is carried in Boot at rear and there is also accommodation for luggage. The lid of Boot will also carry extra luggage.

Special provision is made for accommodating Golf Clubs at the back of rear squab.

Equipment includes: corner lights; ashtrays; driving mirror on off-side front wing. The two off-side doors have private locks and catches are fitted to the near-side doors. The usual fittings are Chromium Plated.

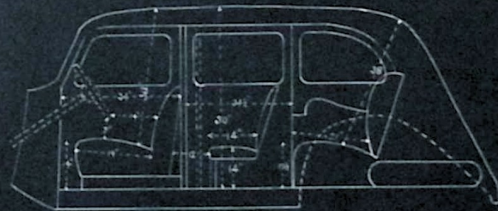
Car cellulosed to choice, as per Austin range of colours. Trimmed best crushed Furniture Hide or Bedford Cord. Floor covered throughout with pile carpet and thick Kurlan rug to rear compartment.

Alternatively, this Model can be supplied without the partition, but with occasional seats, adjustable front seats and sliding roof at the front, at no extra charge.

Details of the engine and chassis will be found in the standard Austin catalogue.



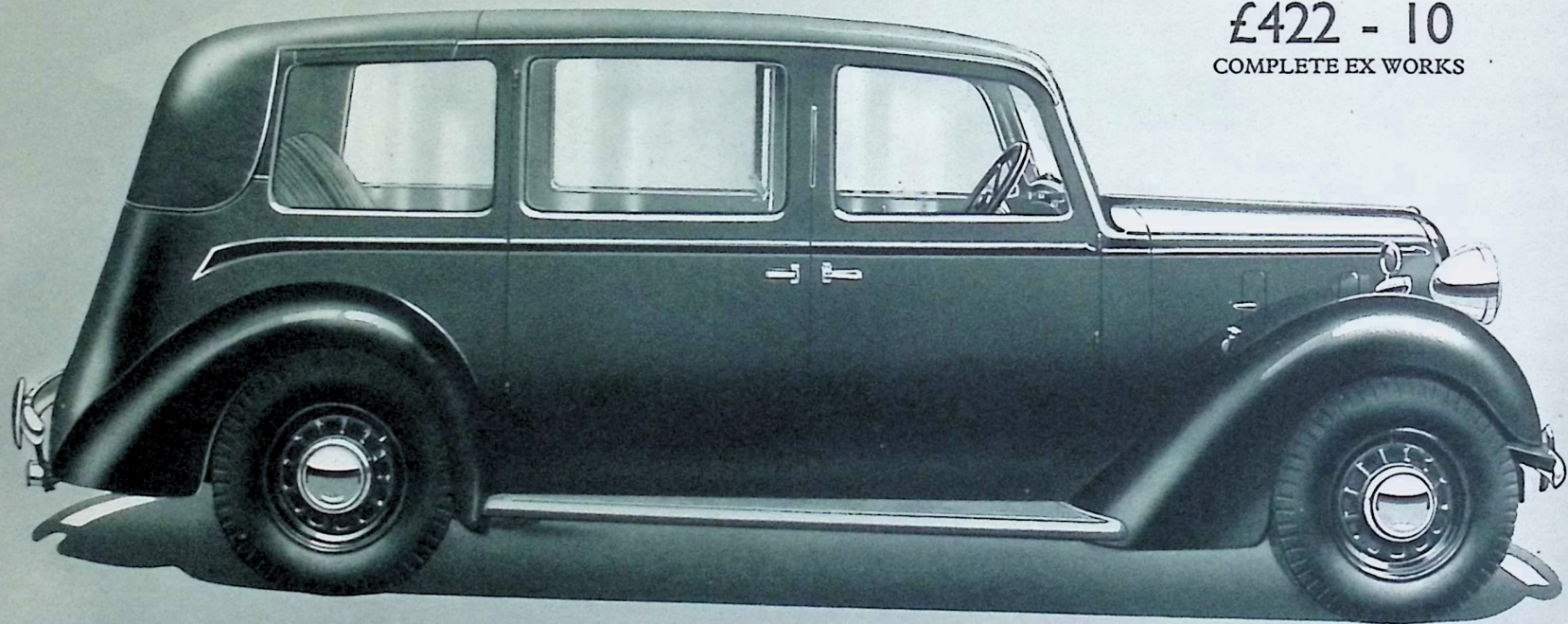
Length of rear cushion at front, 55"



**CORDON** *Bodies*



*on* **AUSTIN** *Chassis*



18 h.p. 6-cyl.  
long wheelbase chassis

**£422 - 10**

COMPLETE EX WORKS

# REGAL

## *Enclosed Landauette de Luxe*

This coachbuilt three-quarter landauette is of particularly attractive appearance, combining a spacious interior with a dignified yet modern exterior.

It is designed with extra high and wide doors; head and leg room are greater than the average, and it will accommodate eight persons, if necessary, the Auxiliary Seats, when in use, forming one seat. There is a sliding glass partition between front and rear compartment. There are six adjustable frameless windows. The single-panel wind-screen is fitted with a patent central adjustable fitting, and can be opened to an angle of  $45^{\circ}$ ; it automatically adjusts itself to any position. Twin Electric Wipers and Interior Visors. Toughened safety glass is fitted throughout, and the backlight is of dazzleproof glass. There are flush-fitting self-cancelling trafficators, and front and rear bumpers. The spare wheel is carried in Boot at rear and there is also accommodation for luggage. The lid of Boot will also carry extra luggage.

This model is very fully equipped for comfort and convenience. A central arm rest of the folding type is fitted to the rear seat, and folding footrests.

Special provision is made for accommodating Golf Clubs at the back of rear squab.

Equipment includes: ashtrays; parcel net; interior light, and driving mirror on off-side front wing. Private locks to the two off-side doors and catches on the near-side ones. The usual fittings are Chromium Plated.

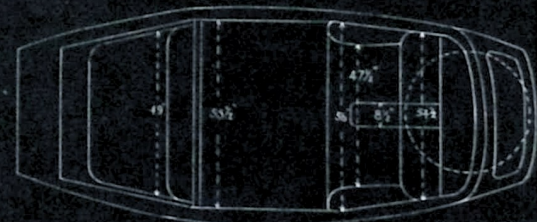
Car cellulosed to choice, as per Austin range of colours. Trimmed best crushed furniture hide or Bedford cord, and the Hood is of finest cross-grained enamelled head leather. Floor covered throughout with pile carpet and thick Kurlan rug to rear compartment.

Alternatively, this Model can be supplied without partition, but with occasional seats and adjustable front seats, at no extra charge.

Chassis specification is as described in the Austin catalogue.



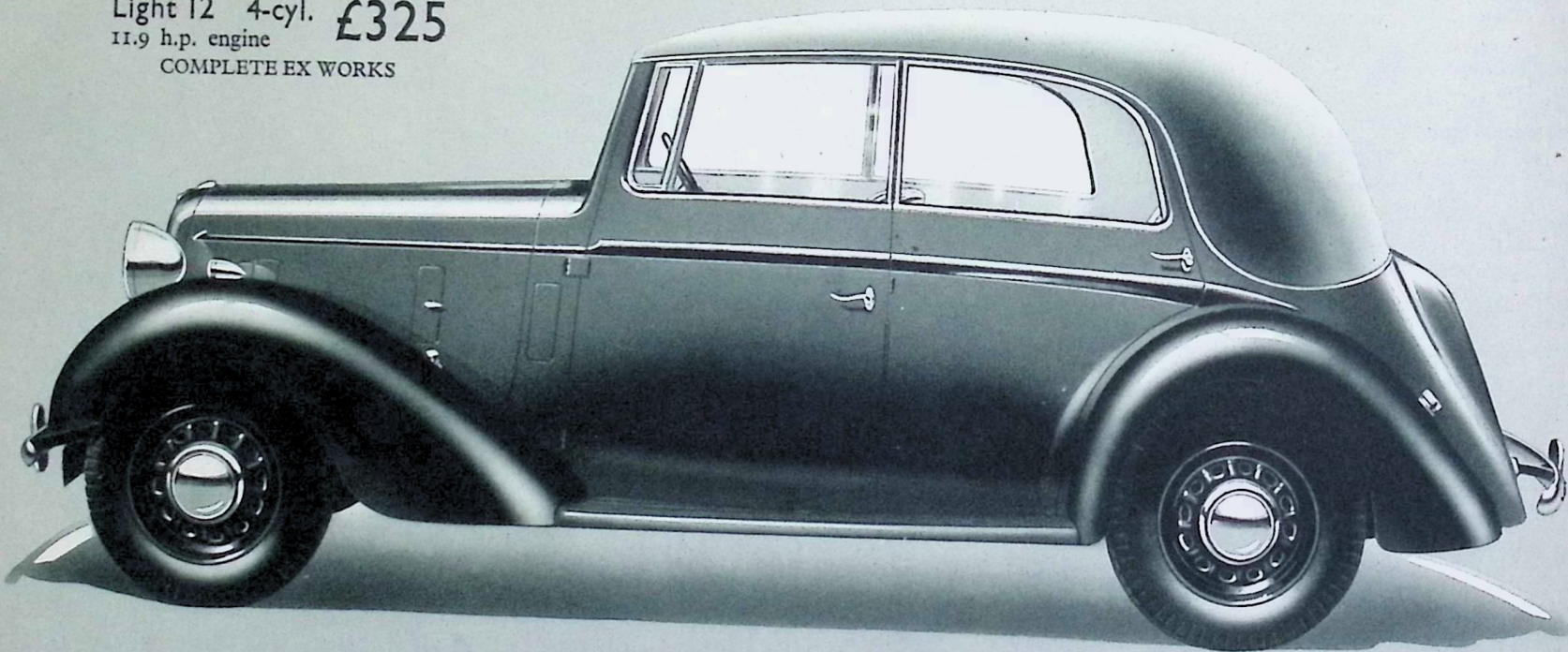
Length of rear cushion at front, 55"



# CORDON Bodies on AUSTIN Chassis



14 6-cyl. - - £330  
15.9 h.p. engine  
Light 12 4-cyl. £325  
11.9 h.p. engine  
COMPLETE EX WORKS



# CABRIOLET

## *Drop Head Coupe*

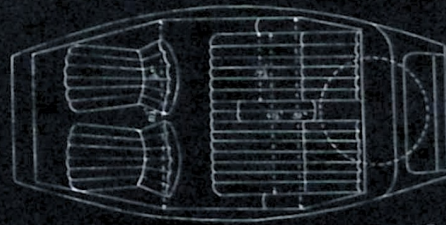
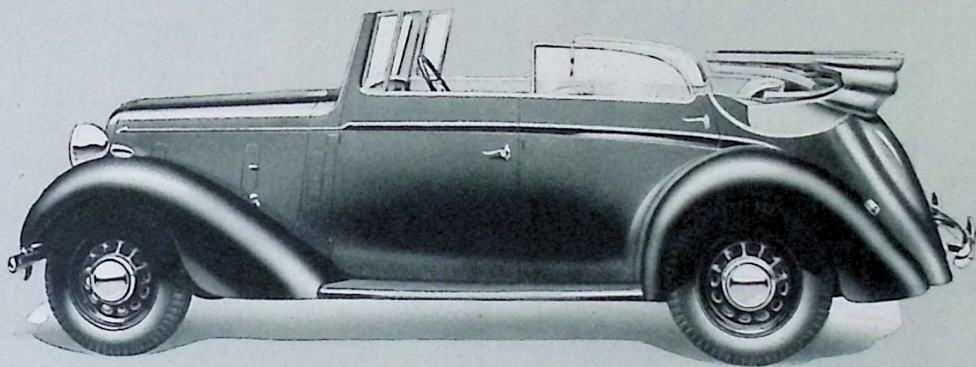
The Gordon Four-Door Drop Head Cabriolet is a dual purpose car ; it is at once a saloon and an open tourer. To open the car, all that is necessary is to undo two clips at the head, and the hood, which is spring-loaded, will fold right back easily. To close the hood a similar simple action is sufficient. The side windows can be raised or lowered whatever the position of the head.

There is seating accommodation for four or five persons, and the front seats are adjustable. A folding centre arm rest is provided for the rear seat as well as the side rests. The one-panel adjustable windscreen has dual electric wipers. Toughened safety glass is fitted all round. Flush-fitting self-cancelling trafficators. There is a built-in Boot at rear, the lid of which forms a spacious luggage grid when fixed horizontally. The spare wheel is enclosed in this Boot. Bumpers front and rear.

Equipment includes : driving mirror on off-side front wing ; ashtray ; private lock to driver's door and catches to other doors. All fittings are Chromium Plated.

Car cellulosed to choice, as per Austin range of colours including wings and wheels. Trimmed best crushed Furniture Hide or Bedford Cord. Hood covered best Mohair double texture material.

The chassis specification is detailed in the Austin catalogue.



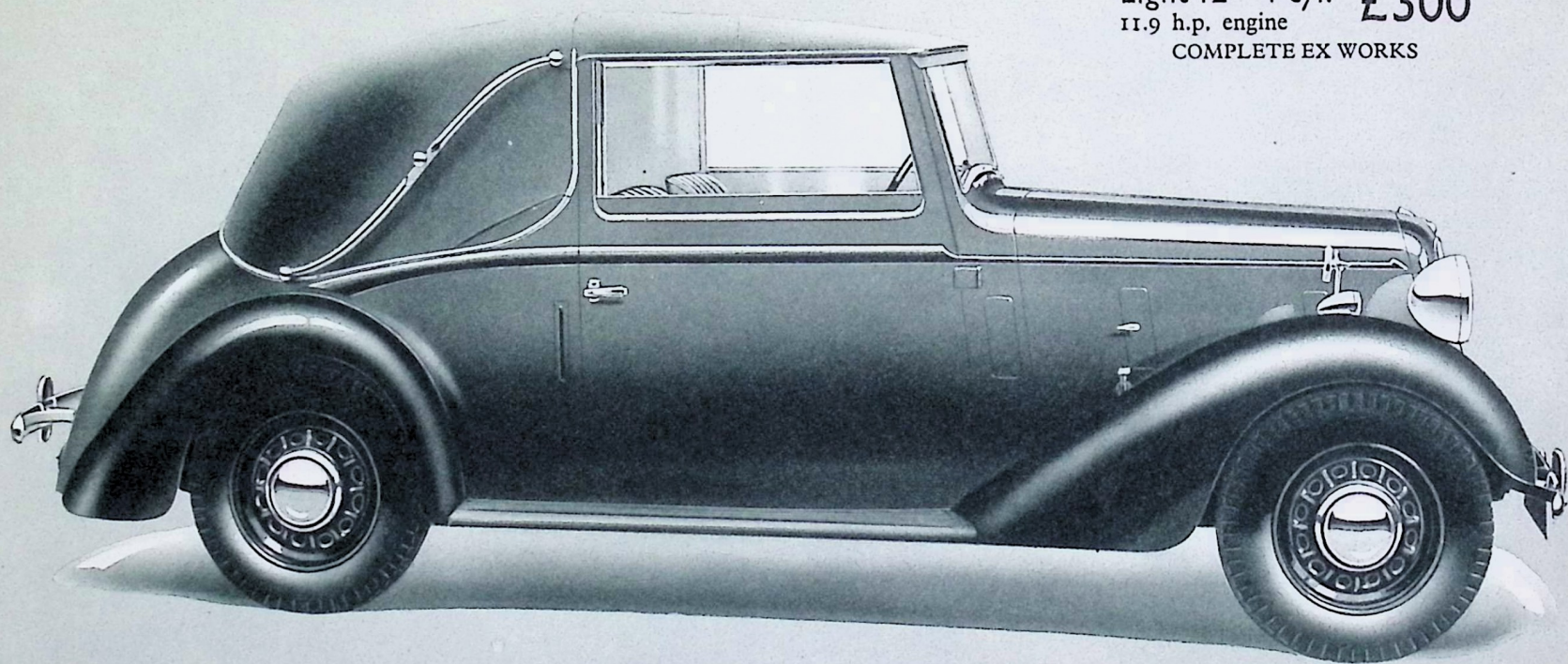
**CORDON** *Bodies*



*on* **AUSTIN** *Chassis*



14 6-cyl. - - £305  
15.9 h.p. engine  
Light 12 4-cyl. £300  
11.9 h.p. engine  
COMPLETE EX WORKS



# ENCLOSED FOURSOME *Drop Head Coupe*

A graceful all-weather coupe of practical design, seating four people. The head is easily and quickly opened either half-way or completely. When closed it has all the weather-tight properties of a saloon model.

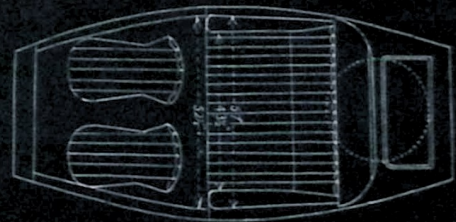
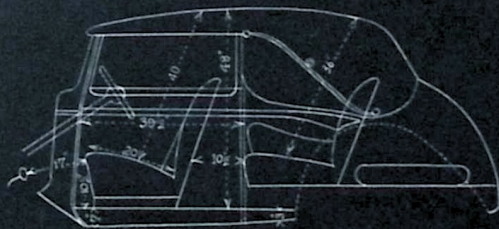
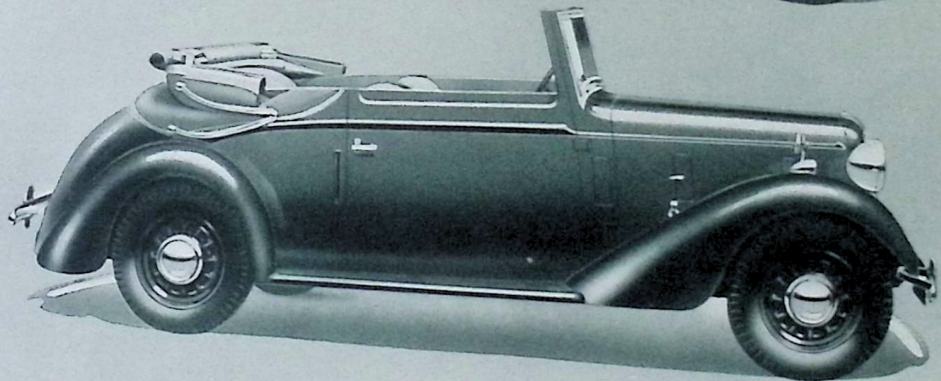
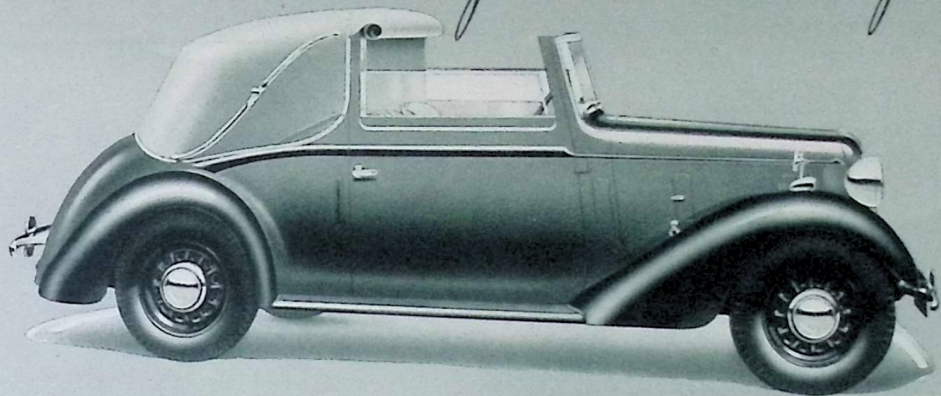
There is a built-in Boot at the rear, the lid of which forms a spacious luggage grid when fixed horizontally. The spare wheel is enclosed in this Boot.

The front seats are separately adjustable, and a Moseley Float-on-Air cushion is provided in the rear. The single-panel adjustable windscreen has twin electric wipers. Toughened safety glass is used throughout. The self-cancelling trafficators fit flush behind doors. Bumpers are fitted at front and rear.

Equipment includes: driving mirror on off-side front wing; ashtray; private lock to driver's door and catch to near-side door. All fittings are Chromium Plated.

Cellulosed to choice, as per Austin range of colours including wings and wheels. Trimmed best crushed Furniture Hide or Bedford Cord. Hood covered best Mohair double texture material.

The chassis specification will be found in the Austin catalogue.



**CORDON** *Bodies*



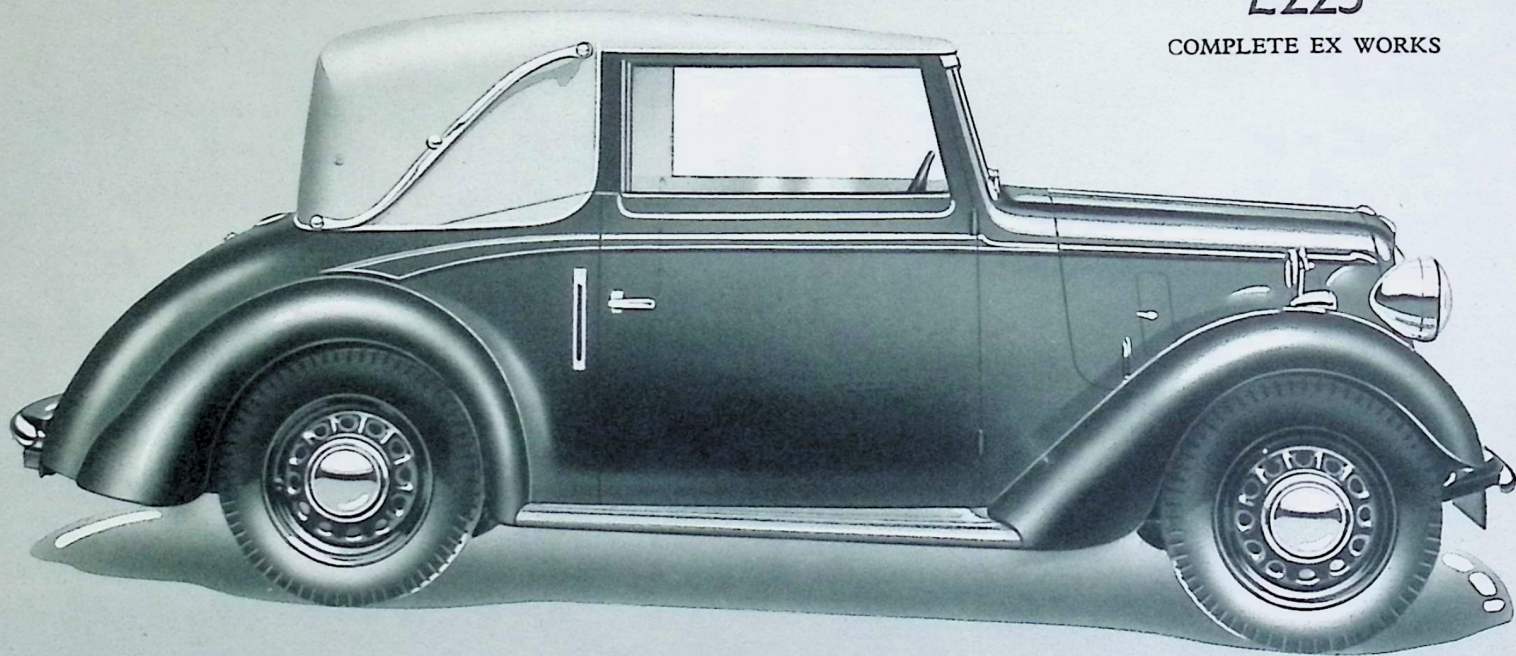
*on* **AUSTIN** *Chassis*



10 h.p. 4-cyl.

**£225**

COMPLETE EX WORKS



# ENCLOSED FOURSOME *Drop Head Coupe*

This attractive all-weather coupe is of practical design, seating four people. The three purpose hood rolls half-way back to give Coupe de Ville position, folds right back with windows dropped for touring, and when completely closed has the weathertight properties of a fixed head saloon.

There is a built-in Boot at the rear, the lid of which forms a spacious luggage grid when fixed horizontally. The spare wheel is enclosed in this Boot.

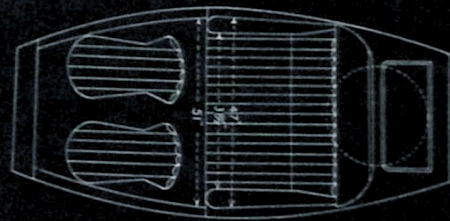
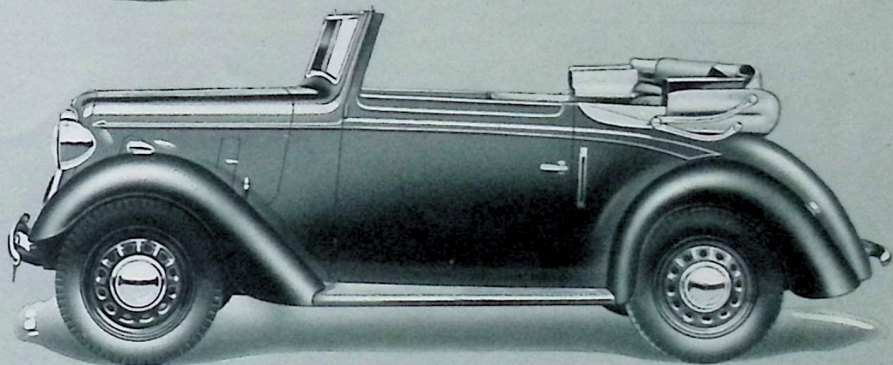
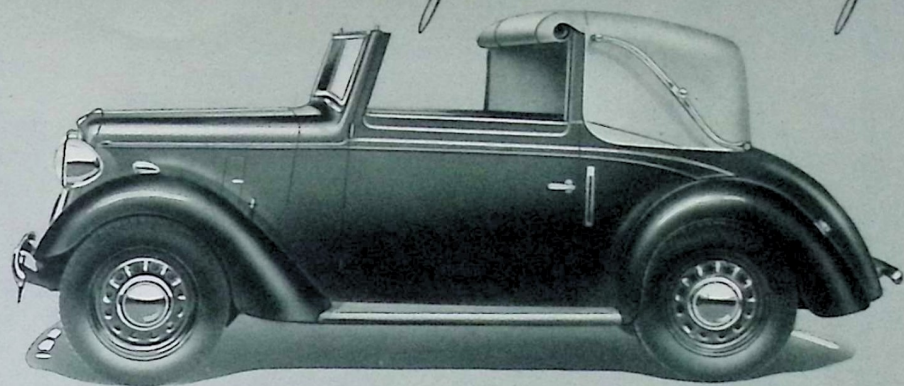
The front seats are separately adjustable. Single-panel windscreen (wide vision) has twin electric wipers. Toughened safety glass throughout. The self-cancelling trafficators fit flush behind doors. Bumpers front and rear.

Equipment includes: driving mirror on off-side front wing; ashtray; private lock to driver's door and catch to near-side door. All fittings are Chromium Plated.

Cellulosed to choice, as per Austin range of colours, including Wings and Wheels.

Trimmed best crushed Furniture Hide or Bedford Cord. Hood covered best Mohair double texture material.

The chassis specification will be found in the Austin catalogue.



# MANUFACTURER'S WARRANTY

**S**UBJECT to the conditions hereinafter mentioned, the goods manufactured by the Company and specified below shall be accepted by the purchaser subject to the following express warranty, which excludes all warranties, conditions and liabilities whatsoever, whether statutory or otherwise, which might exist against the Company but for this provision, viz.:—In the event of any defect being disclosed in any part or parts of the goods and if the part or parts alleged to be defective are returned to the Company's works, carriage paid, within six calendar months after delivery, the Company undertakes to examine same, and should any fault, due to defective material or workmanship, be found on examination by the Company, it will repair the defective part or supply, free of charge, a new part in place thereof.

The Company's responsibility is limited to the terms of this guarantee, and it shall not be answerable for any contingent or resulting liability, or loss arising through any defects. This guarantee does not relate to defects caused by motor racing, wear and tear, misuse or neglect, or to the defects in any motor vehicle or goods which have been altered after leaving the Company's works, or which have been let out on hire, or the identification numbers or marks on which have been altered or removed. Gordon & Co. issue no warranty of the undermentioned goods except as stated herein, but desire and expect that customers shall make a thorough examination before purchasing. This warranty is limited to the despatch to the purchaser, without charge, except for transportation, of the part or parts, whether new or repaired, in exchange for those acknowledged by the Company to be defective, and is dependent upon the strict observance of the following clauses:—

- (a) The purchaser shall send to the Company's works such part or parts as are alleged or claimed to be defective promptly on the discovery of the claimed defect. Transportation is to be prepaid by the purchaser, and said part or parts to be properly packed for transit and clearly marked for identification

with the name and full address of the purchaser, and with the number of the vehicle from which the said part or parts were taken.

- (b) The purchaser shall post to the Company at its works, on or before despatch of such part or parts alleged to be defective, a full and complete description of the claim and the reasons therefor.
- (c) The judgment of Gordon & Co., in all cases of claims, shall be final and conclusive, and purchaser agrees to accept their decision on all questions as to defects and to the exchange of part or parts. After the expiration of six days from the despatch of notification of the Company's decision the part or parts submitted may be scrapped or returned carriage forward by the Company.

## *Terms of Business*

**PRICES.**—The Company reserves the right to vary the list prices at any time and all goods are invoiced at the prices current on day of delivery. Should the price be increased prior to delivery the Purchaser has the option of cancelling the order within seven days after being notified of such increase.

**DELIVERY.**—At the Company's Works, Birmingham. The Company will not be responsible for any delays in connection with the manufacture or delivery of any products listed herein, if such delays are caused by scarcity of labour or material, strikes, lockouts or any cause over which the Company has no control.

**ALTERATIONS IN DESIGNS.**—The Company reserves the right to make, without notice, any alterations to or departures from the specifications or designs detailed in this Catalogue whenever such alterations are considered advantageous or necessary.

Toughened Safety Glass will be generally fitted, but the Company, if supplies are not available, will substitute other approved glass.



*Gordon Bodies*  
on  
*Austin Chassis*

*Gordon & Co.*

1939 SEASON