

BRUSH

60 313 123

W90

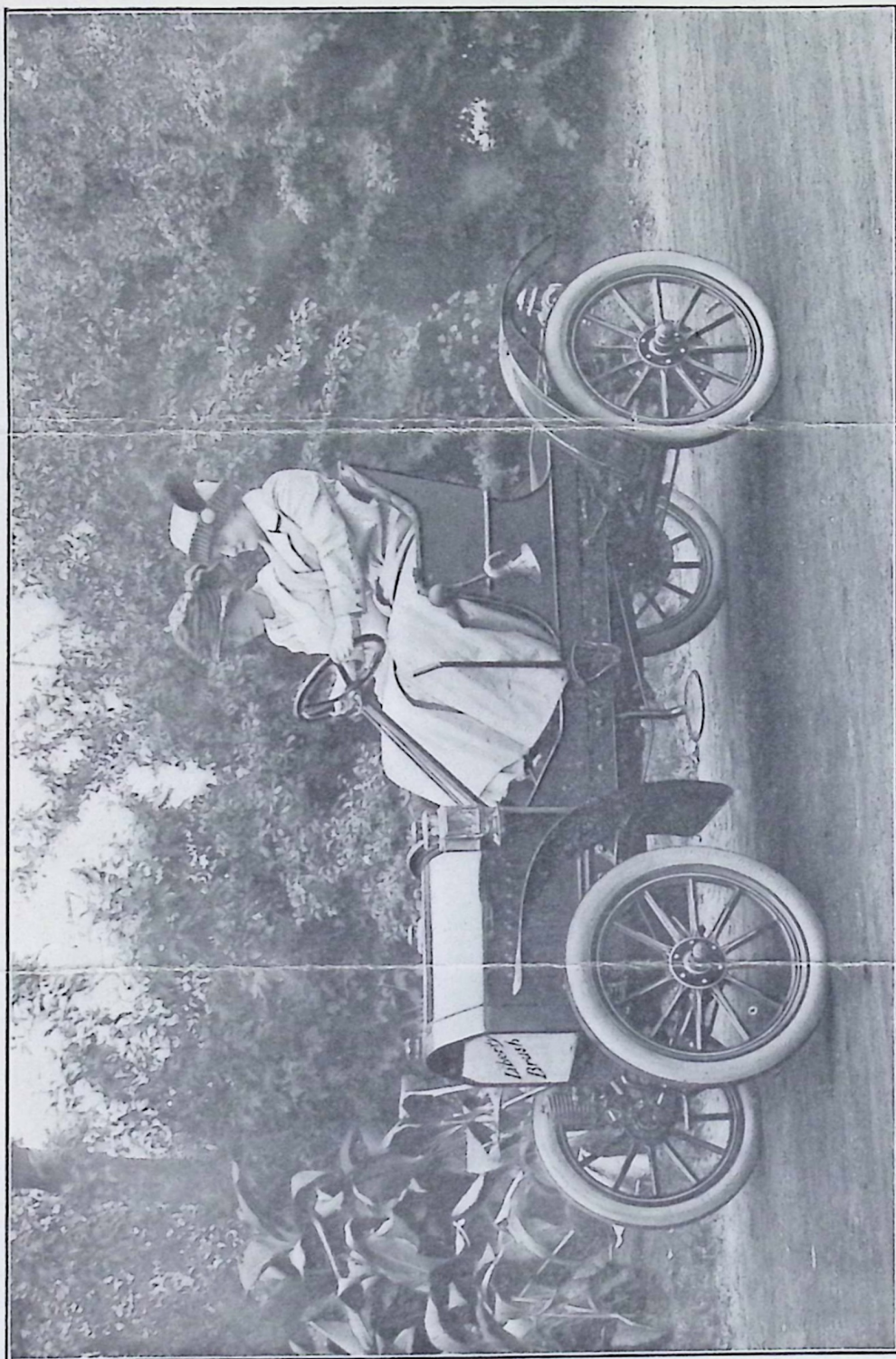
A Guaranteed
Efficient
AUTOMOBILE

for

\$ 350



*The
Liberty-Brush*



The Liberty-Bush

THE STORY *of the* LIBERTY-BRUSH

HERE is a guaranteed efficient automobile at a price within the reach of all. The price is \$350—the name LIBERTY-BRUSH—and its arrival sweeps aside the last obstacle to owning an automobile—*that of cost.*

The LIBERTY-BRUSH has a universal appeal for two reasons—it is lower in initial cost and the expense of its upkeep is less than for any other motor car built.

All of us demand liberty—the freedom to go about where we choose and when we choose.

We do not want to be handicapped by the limitations of travel by train or horse. Street cars run only on certain thoroughfares and must stop at every signal; they do not give dependable service; they have none of the exclusiveness which it is human nature to desire in riding.

The horse is too slow—so slow that it is being abandoned at a phenomenal rate.

What is the answer for the average man? A low priced automobile, economical to maintain, backed by the service that an established and reputable company gives.

An automobile at \$350 that would give all the joys of travel and none of the discomforts, has been the dream of the man of average means for years. It has arrived.

How many people have you heard say, “they would buy an automobile when the price is below \$400?” These people are going to make good on their assertion. They have been saving up for this day of the LIBERTY-BRUSH.

We announced the appearance of this automobile on Independence Day, because it is an epoch making event in the automobile industry, just as the Fourth of July, 1776 was in the history of our country.

The LIBERTY-BRUSH frees the masses of people from the shackles of too high a price—a price beyond their means—for what they hitherto have not been at liberty to purchase—an automobile.

When a standard automobile of proven value like the LIBERTY-BRUSH can be bought for \$350, the man who continues to use horse, train or street car is behind the times. This day calls for an economical method of getting from starting point to destination.

The horse and the steel rail methods in city and country are the more expensive methods. The LIBERTY-BRUSH way is the economical way.

The Brush Runabout Company which builds the LIBERTY-BRUSH is a division of the United States Motor Company—the largest organization in the automobile industry. It buys materials in great quantities and has developed a thorough system of co-operative effort with a view to economy in production and distribution.

That's why we can sell an automobile at \$350 and still realize a reasonable profit.

**For
Business
Use**

The LIBERTY-BRUSH is just the car for physicians, salesmen, solicitors, collectors, and all those with whom traveling is a necessity. Dependable and speedy, it will do three times the work at half the cost of train, livery or street car. Besides it is always ready, cannot be over-worked and quickly pays for itself in savings and increased profits. The LIBERTY-BRUSH will be especially valuable to farmers.

**For
Family
Use**

Simple construction, easy control, and absence of complicated machinery make the LIBERTY-BRUSH the ideal car for family use. Any boy or girl can learn to drive it in fifteen minutes. Caring for it requires only a few minutes daily.

**A Car
Every
Man Can
Afford**

The LIBERTY-BRUSH creates an epoch in the automobile industry, marking as it does a response by a standard manufacturer to the demand for a motor car that any man, regardless of his income, can buy and maintain.

**Some
Brush
Records**

Mechanically the successful standard Brush runabout is the forerunner of the LIBERTY-BRUSH. Brush records prove Brush ability—winning the trophies in its class in the Munsey Tour and the Algonquin Hill Climb, winning the Minneapolis little Glidden tour, climbing Pike's Peak, negotiating the 1909 Glidden tour and being always prominent in economy contests.

SPECIFICATIONS

Motor: Single vertical cylinder; 10 horsepower, bore 4 inches, stroke 5 inches; located under the hood in front; three point suspension.

Cooling: Water; Briscoe thermo-syphon system, without pump; vertical tube radiator.

Transmission: Selective internal gear type; multiple disc clutches for all speeds; enclosed and running in oil.

Speeds: Two forward and one reverse.

Drive: Shaft to differential; double side chains to rear wheels; universal joint in shaft; bevel gear differential and bevel gears mounted upon ball bearings.

Steering Gear: Internal reducing spur gear, enclosed and oil-tight. Its slow and powerful action straight-ahead and accelerating action as wheel turns is a feature.

Brakes: Internal expanding in rear wheel sprocket hubs. Larger than on most cars of twice its weight.

Springs: Four spiral springs, one at each corner, easy riding and mechanically impossible to break.

Control: Spark and throttle levers under steering wheel; side hand lever for all speeds, selective type; foot pedal releases clutch without touching hand lever, and also applies the brakes.

Wheels and Tires: Artillery wheels; 28 x 3 inch pneumatic tires.

Wheel Base: 80 inches.

Tread: 56 inches; for the South 60 inches.

Equipment: Tools, tire repair kit, three oil lamps, horn.

Speed: Up to 30 miles per hour.

THE BRUSH RUNABOUT COMPANY



Division of UNITED STATES MOTOR COMPANY

Broadway at Sixty-first Street, New York