



The

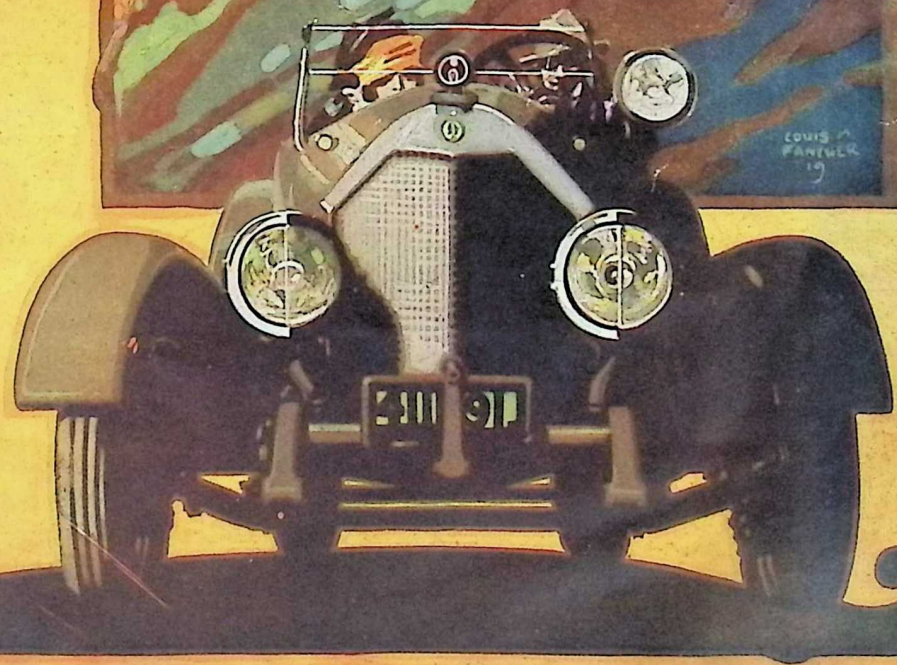
ARGONNE

Four

*Of foreign design with four forward speeds
Warranted to do 70 miles an hour
-and 20 miles to the gallon of gasoline . . .*



LOUIS FANTLER
19



There are two types of fine Car in America
 One is the chauffeur-driven family Car
 The other is the Owner's Favorite.
 He drives it himself. That Car is

THE ARGONNE

DETAILS

MOTOR

Argonne Type—Four cylinder, Monobloc, Special High Speed, 3 $\frac{3}{4}$ x5 $\frac{1}{8}$.

Valves—Interchangeable.

Crankshaft—Chrome Nickel Steel fully counter-balanced.

Pistons—Three rings.

Lubrication—Pressure feed by gear pump.

Intake Manifold—Cast integrally with cylinders and water-jacketed.

CARBURETOR

Double jet with Stewart Vacuum Tank.

GASOLINE TANK

21 gallons capacity hung at rear.

ELECTRICAL EQUIPMENT

Ignition—Eisemann Magneto, High Tension.

Starting and Lighting—12 Volt Westinghouse 2 Unit System. Starter equipped with Bendix Drive. Exide over-size Storage Battery with heavy plates.

COOLING

Thermo Syphon.

RADIATOR

Argonne V Type streamline square tub honey-comb, mounted on 2 ball universal joints, eliminating all strains.

CLUTCH

Special design dry disc enclosed in dust proof casing. Throwout shaft mounted in oil-less bearings.

ALIGNMENT COUPLINGS

Between engine and transmission. Argonne design, flexible and noiseless.

TRANSMISSION

Four forward speeds, independent of motor.

Hung in frame and suspended from three points.

Gears—Special alloy steel, hardened and ground on bearing surfaces.

Shafts—Special alloy steel, oil treated, mounted in large Ball Bearings.

DRIVE

Hotchkiss.

REAR AXLE

Semi-Floating. Spiral bevel gears and bevel gear differential mounted in Bock Taper Roller Bearings.

Shafts—in large ball bearings.

BRAKES

Foot and emergency brakes operated through compensating devices. Adjustments from under foot board.

SPRINGS

Semi-elliptic Silico Manganese Steel. Front and rear provided with patented oil-less bushings and hardened steel shackle pins. Rear springs underslung.

STEERING GEAR

Worm and Gear type located on left side. All gears and shafts hardened and ground and adjustable for all wear.

WHEELBASE

118" and 128"

TREAD

56"

WHEELS

Wire or Disc, optional.

TIRES

Straight side, Silvertown Cord, 32x4.

EQUIPMENT

Hartford Shock-Absorbers, Waltham combination clock and 80 mile Speedometer (driven from transmission). Complete set of tools, tire pump, jack, spare wheel and wheel carrier, Klaxon horn, cowl lights, inspection light with cord, motor lights under hood, motometer, ammeter, dash gasoline meter (showing season and trip consumption), special top, windshield, 2 bulb head lights and tail light, license brackets, muffler, cut-out, etc.

BODIES

Argonne Special, two and four passenger.

COLOR

Body gun metal, satin finish, fenders and wire wheels black.

Disc wheels gray with black rims and hubs.

Other colors optional.

UPHOLSTERY

Best Spanish leather, any standard color desired.

PRICE

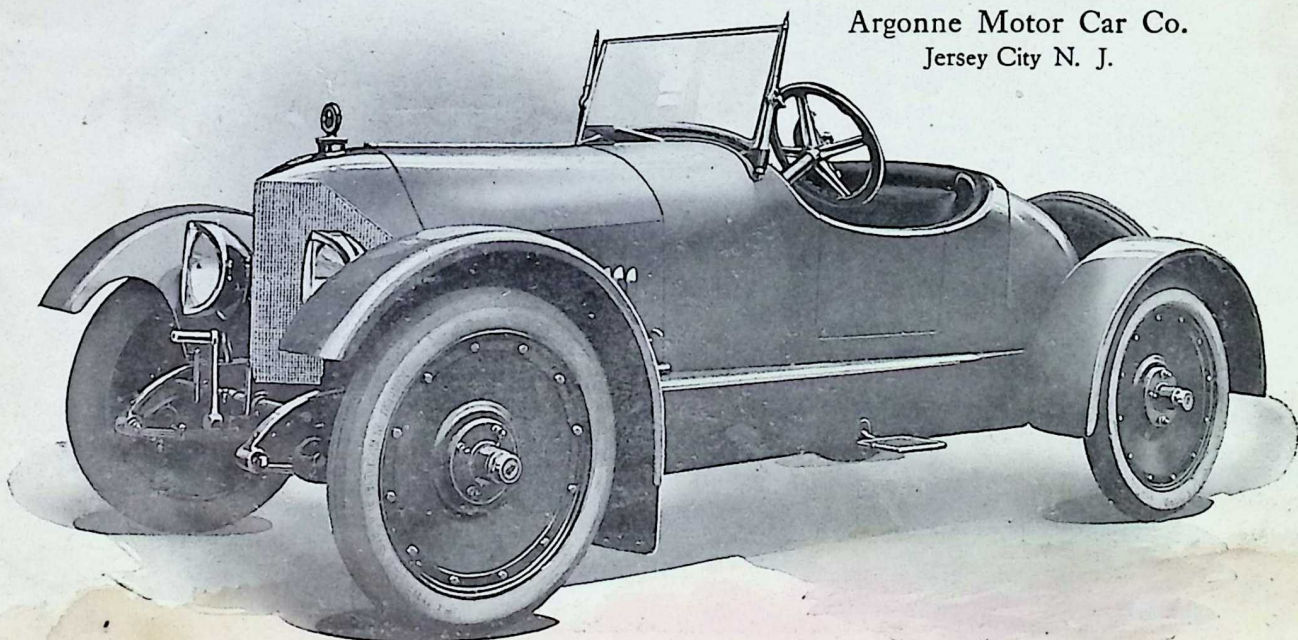
Special Roadster, \$4,500.00 f. o. b. Jersey City.

Four Passenger Open Sport Model, \$4,750.00 f. o. b. Jersey City.

Chassis \$4,000.00.

CLOSED CARS

Prices will be quoted upon application.



Argonne Motor Car Co.
 Jersey City N. J.