

Duplicate

36 X 4

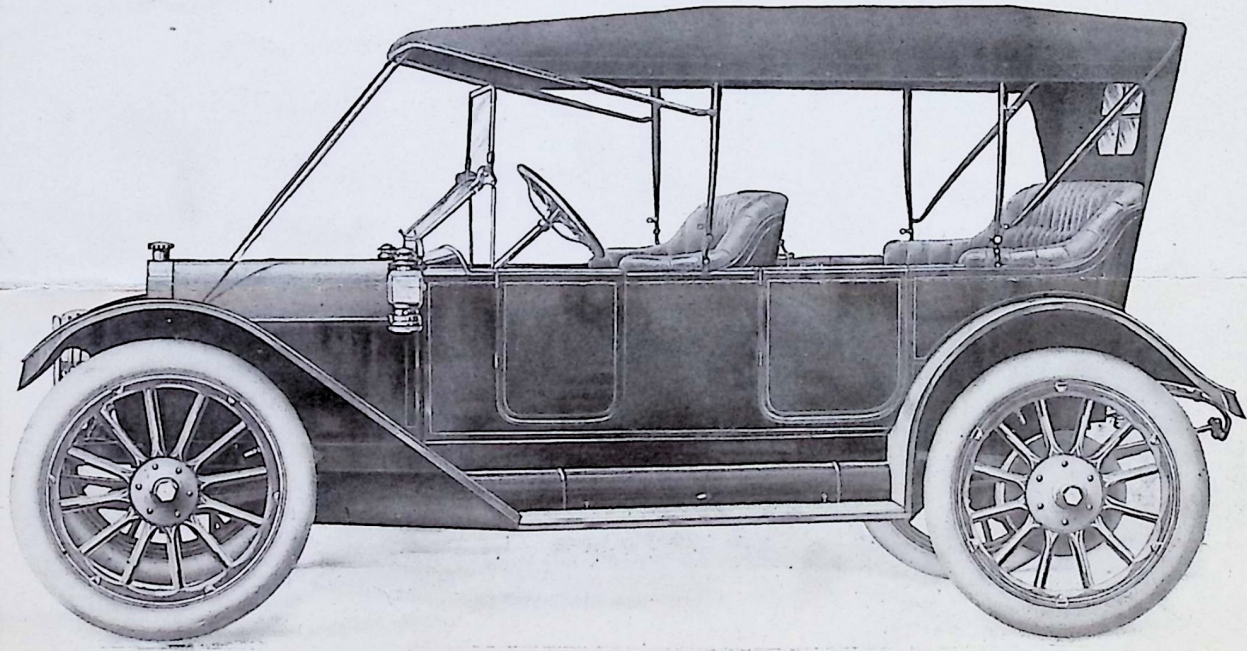
1914

AM
7 8 9 10 11 12 1 2 3 4 5 6 PM
SEP 30 1913
MAILING DEPT. AKRON, O.
RECEIVED
ANS'D. NO REPLY

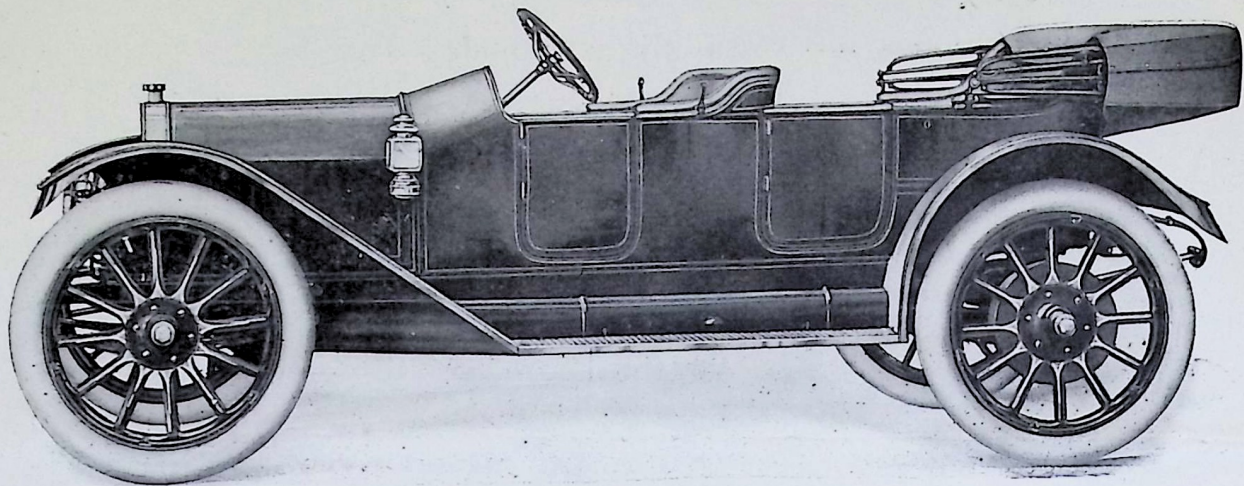
ARBENZ

Four Forty-eight

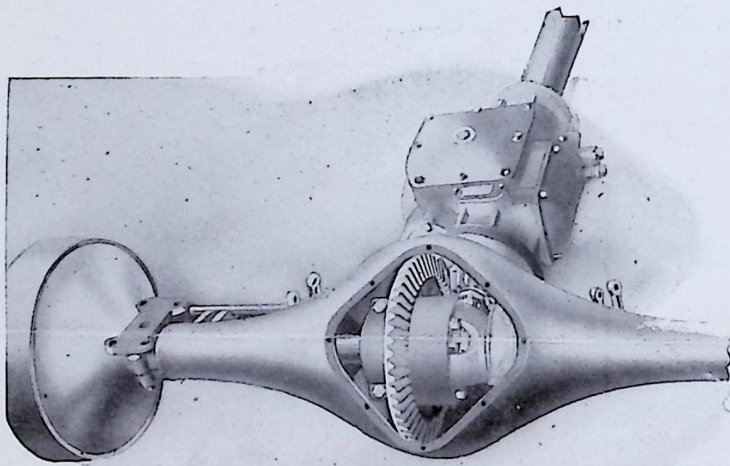
Best Balanced, Most Efficient, Easiest Riding,
Cheapest to Operate and Maintain
Medium Price Car Made.



Model F, Five Passenger Touring Car, \$1885.00
Fully Equipped, including Electric Lights and Starter.



Model G, Four Passenger Torpedo Car, \$1885.00
Fully Equipped, including Electric Lights and Starter.



The ARBENZ
Special
Rear Axle
and
Transmission.

The rear axle is of special design, full floating with highest grade annular ball bearings. Gears and shafts special heat treated steel. Extra heavy pitch gears in bevel drive, especially durable. Brakes 16" in diameter, fully enclosed, extra large surfaces insure easy but positive action. Braking surface positively protected from oil and grease. Transmission integral with rear axle. Three speeds forward and reverse, selective. Extra wide face gears insures increased efficiency and durability. Lubrication is automatic. All parts easily accessible and adjustable to make all gears noiseless. Only one Universal Joint between motor and wheels.

We Put it in the Car-- Not All in the Magazines.

**Note the following admirable features,
many of them found only in the ARBENZ Cars.**

Extra Strength Low Hung Frame; Long Wheel Base, 120 in.; Large Wheels, 36 in.; Extra long Comfortable Riding Springs, 50" in rear, 40" in front.

Long Stroke Powerful Motor, Bore $4\frac{1}{8}$ in., Stroke $5\frac{1}{2}$ in.; Extra large Valves $2\frac{1}{2}$ in.; L Head Cylinders, cast in pairs; Valves entirely enclosed; Model L Schebler Carburettor; Cone Clutch, special size and design, 3 in. Face with Cushion Springs insuring Easy and Gradual but Positive engagement.

Straight Line Shaft Drive; Unit Transmission attached to Rear Axle giving accessibility, better distribution of the weight, simplifies construction, allows of using only One Universal Joint; Rear Axle Positively Superior to any of the other advertised full floating types; the Flanged End of Drive Shaft Bolted Rigidly to the Hub Plates of the Wheels eliminating the possibility of Loose or Wobbling wheels; two sets of Large 16 in. Internal Expanding Brakes, fully enclosed, our Special Design, Extra Strength.

Large 18 inch Corrugated Steering Wheel; Ease with which Car is Handled; Accessibility of all Parts; Endurance, Speed, Flexibility and Noislessness; Spring Shackles equipped with Hardened and Ground Grease Bolts.

It is positively the best hill climber now on the market.

Clean and classy appearance. Running boards cleared of tool box, etc.

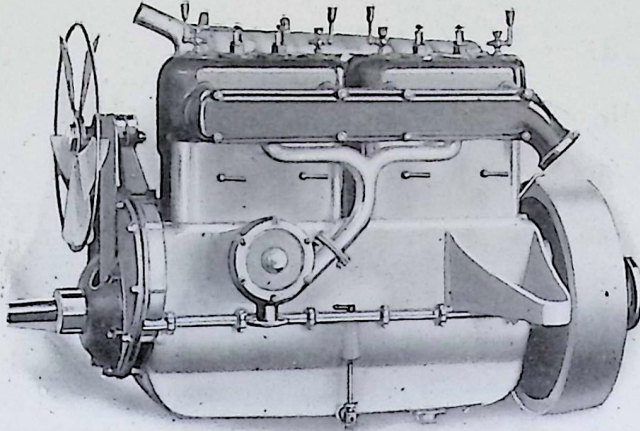
The ARBENZ cars are built in accordance with the latest and best practice that obtains in Europe as well as America. They are quiet, easy riding and especially easy to drive and are luxuriously finished. Each detail is given careful consideration with the result that the car possesses individuality and character. From the design of the engineer to the final test of the completed car, every detail is carefully watched and tested.

Prices Quoted Cover Complete Touring Equipment,

viz: Silk Mohair top with Dust Cover and full set of Side Curtains, Wind Shield, Speedometer, Electric Lights and Starter, Electric Horn, complete set of Tools, Jack, Tire Pump, Repair Kit and Tire Irons.

Demountable Rims with Extra Rim, optional.

Nickel Trimmings throughout.

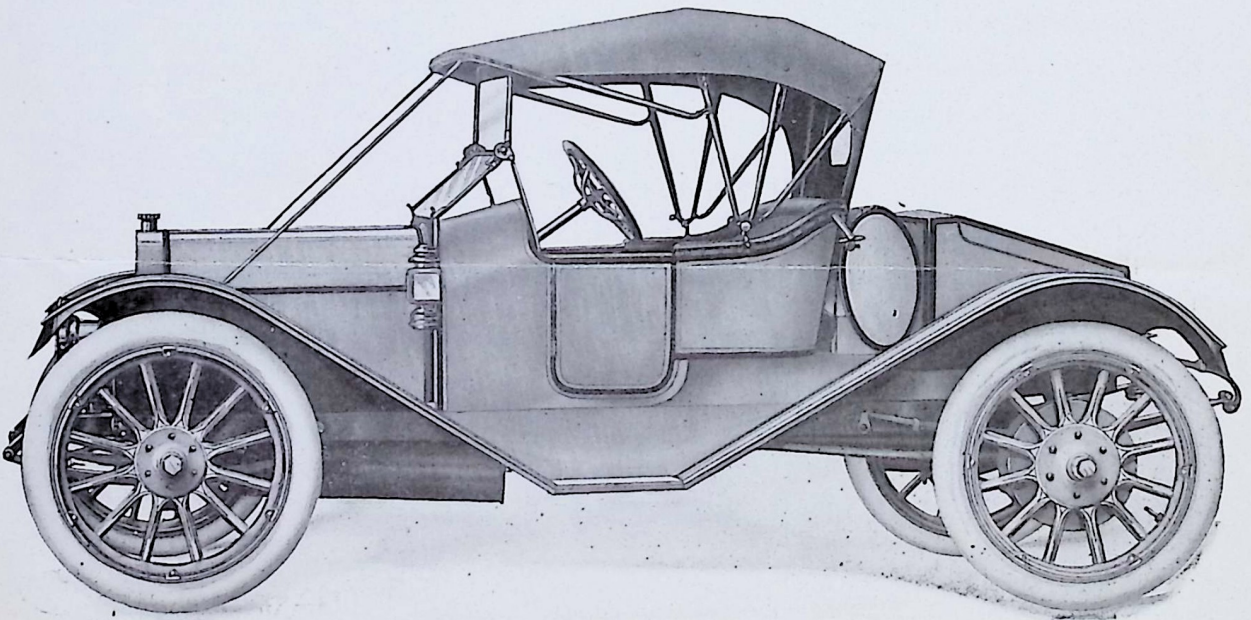


The ARBENZ Motor

Bore $4\frac{1}{8}$ in.

Stroke $5\frac{1}{2}$ in.

In accordance with the latest and best European practice we have gone still further in the way of lengthening the stroke of our motor, increasing the power and the flexibility especially at the lower speeds. Cylinders cast in pairs. Valves $2\frac{1}{4}$ in. in diameter, have ample lift, are all on one side and are fully enclosed. Cover plates easily removed for adjustment and inspection. Oiling system, constant level sump operated by means of a worm driven positive gear pump. Crank Shaft is very large, being $2\frac{1}{4}$ in. in diameter and made of Special Analysis Heat Treated Steel, three bearings. Cams integral with cam shaft, hardened and accurately ground to size and shape. Cylinders and pistons ground to size and fitted with device to keep oil from going past into explosion chamber. Crank case aluminum, Parson's white brass bearings, Centrifugal Water Pump, Oil Drain Cock easily accessible. Carburettor placed low insuring flow of gasoline on any grade.



Model H, Two Passenger Roadster, \$1825.00

Fully Equipped, including Electric Lights, Starter and Trunk.

Some of the reasons why the ARBENZ cars for 1914 do not differ greatly from preceding models and why the practice of bringing out distinctly new models each season has been discontinued.

First and Foremost, because in the ARBENZ cars all features that have been proven to be desirable are promptly adopted without regard to season or cost and thus they are always just a little AHEAD of the others. Because during successive years the ARBENZ cars have been acknowledged as

- STRONGEST** Constructed mechanically correct out of best material made.
- MOST POWERFUL** Our long stroke motor with extra large valves is equal to every emergency.
- MOST EFFICIENT** That each and every part is designed to meet every requirement has been demonstrated in every test.
- BEST BALANCED** The weight of car is not only less than others of same size and power, but is better balanced, each tire carrying practically the same weight.
- EASIEST RIDING AND QUIET** The extra long springs and the perfect balance as well as the car being hung low, together with long wheel base and large wheels, overcome jarring, jolting, swaying and skidding. This not only makes the ARBENZ car the easiest riding car made but also reduces the wear and strain on the various parts and tires.
- EASIEST HANDLED** The number of ARBENZ cars being driven by ladies of less than average strength without fatigue, shows that driving an ARBENZ car is a pleasure and not a laborious task.
- LIGHTEST** For its size and power, the ARBENZ car is the lightest, it weighs only a little over 2800 pounds.
- GIVING GREATER TIRE MILEAGE** The perfect balance, the simplified construction, lesser weight and overcoming jarring, jolting, skidding and spinning of the wheels, insures almost double the number of miles from a set of tires when used on an ARBENZ car.
- COSTING LESS TO OPERATE** Actual tests varying from short runs over good roads to one thousand mile runs to Milwaukee and back and a 3800 mile run from the factory to Boston and down the Atlantic Coast and back over all kinds of roads have fully demonstrated the fact that with the ARBENZ car you get from 25 to 40 per cent. more mileage per gallon of gasoline than from other cars of similar size and power.

SPECIFICATIONS

WHEEL BASE

120 in. wheel base. Standard tread.

WHEELS

36x4 in. tires. Twelve spokes in both rear and front. Artillery type, second growth hickory. Rim standard Q. D. or universal Demountable.

MOTOR 48 H. P.

Four cylinder, $4\frac{1}{8}$ Bore, $5\frac{1}{2}$ Stroke. Valves all on one side, fully enclosed. Cast in pairs. Long stroke in accord with latest foreign practice. Will develop approximately 48 H. P. on brake. Starting crank automatically held in vertical position.

LUBRICATION

Entirely automatic, pressure system, self-contained within Crank Case.

FRAME

Heavy gauge, special quality, pressed steel, hung very low. Kick up in rear.

AXLES

Front Axle Deep I Beam Section. Rear, annular ball bearing, floating type.

TRANSMISSION

Unit Selective Transmission, mounted on rear axle. Only one Universal Joint between motor and wheels. Annular Ball Bearings. Extra wide faced Gears.

CONTROL SET

Three speeds forward and reverse. Selective type.

BRAKES

16 in. on rear wheels, internal Expanding, fully enclosed. Foot and Emergency.

CLUTCH

Extra large Cone, with springs to insure easy engagement.

RADIATOR

So constructed that bursting of tubes due to freezing practically overcome. Water Circulation positive by Centrifugal Pump.

IGNITION

Dual System. Magneto and Batteries. Separate Coil.

STEERING GEAR

Worm and Worm Wheel, irreversible. 18 in. special pattern, corrugated wheel, with finger grips.

SPRINGS

Front Springs Semi-Elliptic, 40 in long; Rear Springs $\frac{3}{4}$ Elliptic, 50 in. long.

GASOLINE TANK

Capacity, 14 gallons.

BODY

Metal. Three Styles. High Grade Leather Upholstery.

(G) Low Racy Torpedo, seating four.

(F) Fore-door Touring Car, seating five.

(H) Racy type, side door, Roadster. Gasoline tank and trunk in rear.

The management of The ARBENZ Car Company is in the hands of men who have had many years of experience in manufacturing. Its policy has been conservative and it has never resorted to spectacular sales methods. To the merits of the car along with the conservative management we attribute our success.

WARRANTY

We guarantee absolutely all cars manufactured by us. This being limited to the furnishing at our factory without charge of such parts as shall under ordinary use appear to us to have been defective in material or workmanship, provided such defective parts are sent us charges prepaid.

FREE LIBRARY OF PHILADELPHIA

THE **ARBENZ** CAR CO.

Chillicothe, Ohio

AUTOMOBILE REFERENCE COLLECTION