



# Milburn LIGHT Electric



THE PAST SEASON the Milburn took its proper position of dominance in the electric field.

Its weight was nearly a ton less—its price was more than a thousand dollars less, than the large, heavy electrics.

Its beauty was granted—instantly—unanimously.

Its dependability and utility were quickly proved, and the demand for this car has steadily increased.

Only the quantity production we planned could have made the low price possible.

Sales have justified the large production.

This season our production will be even larger.

This season, although Milburn success has caused a general trend toward lighter and lower-priced electrics, the Milburn is still by far the lightest and by far the lowest priced electric.

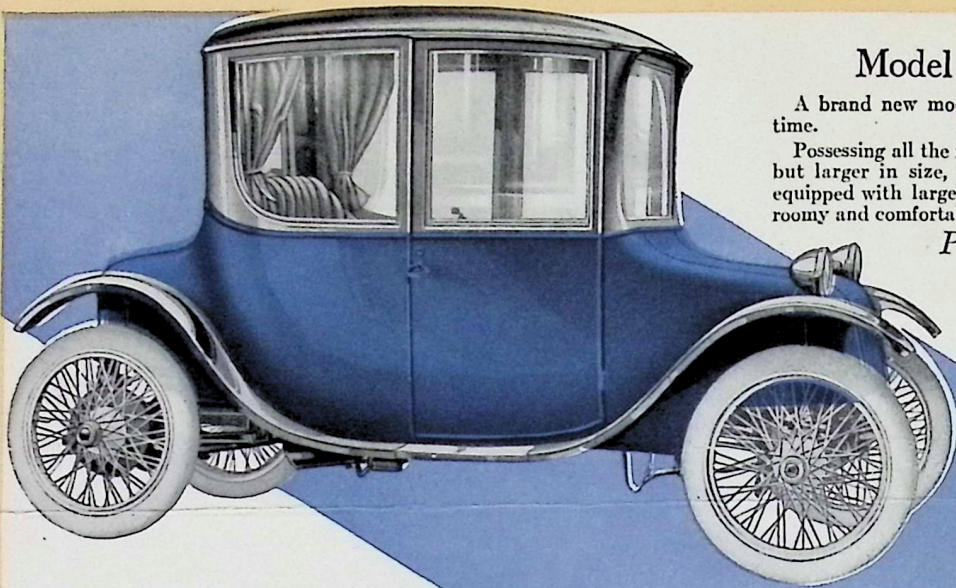
This season the Milburn is even faster and travels even more miles per charge.

In many other ways the car is improved.

But the price remains the same, \$1485 for Model 15 Coupe, and \$1285 for Model 151 Roadster.

And we have added to the line a bigger car with still greater radius per charge—Model 22 Brougham—\$1585.

The Milburn Wagon Company  
Toledo, Ohio

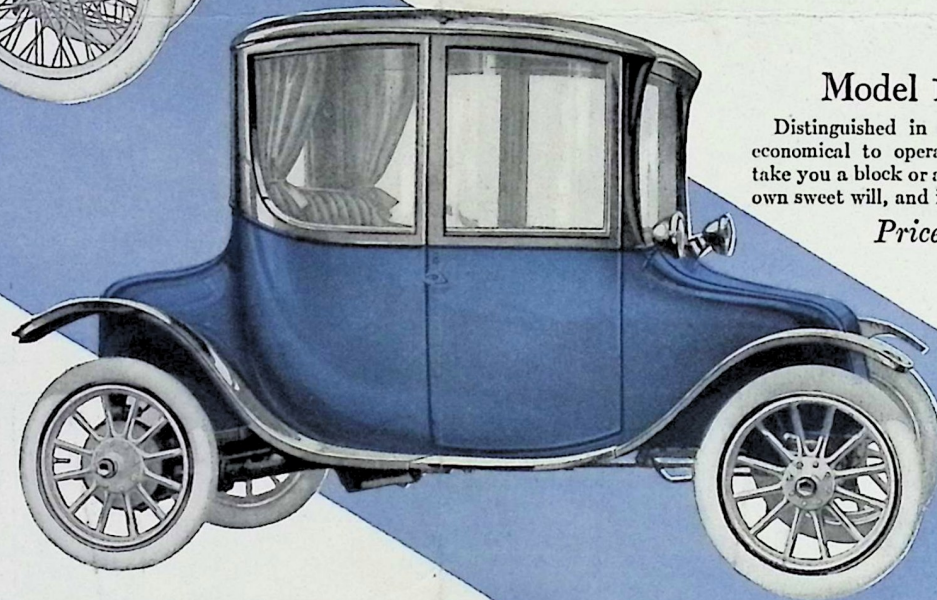


### Model 22 Brougham

A brand new model here announced for the first time.

Possessing all the features of other Milburn models, but larger in size, of greater battery capacity and equipped with larger tires, this electric is luxuriously roomy and comfortable.

*Price \$1585*



### Model 15 Coupe

Distinguished in appearance, luxurious, economical to operate. Always ready to take you a block or a day's journey, at your own sweet will, and in any kind of weather.

*Price \$1485*



### Model 151 Roadster

"Snappy" in appearance, light and convenient to handle, economical to own and operate. An ideal car for business and professional men and those who prefer the pleasures of an open car.

*Price \$1285*

### Specifications

General Electric Controller  
General Electric Motor  
Hess Bright Bearings  
Cantilever Springs

Dura Mechanical Window Lifters  
Cord Tires  
Worm Gear  
Aluminum Body Panels

*Brougham . . . 4 Passengers*

*Coupe . . . . . 4 Passengers*

*Roadster . . . 2 Passengers*

Wooden wheels and cord tires are standard equipment on all models.

Wire wheels, Motz tires and Edison batteries are furnished as extra equipment when desired.

Prices f. o. b. Toledo, Ohio

Catalogues on request

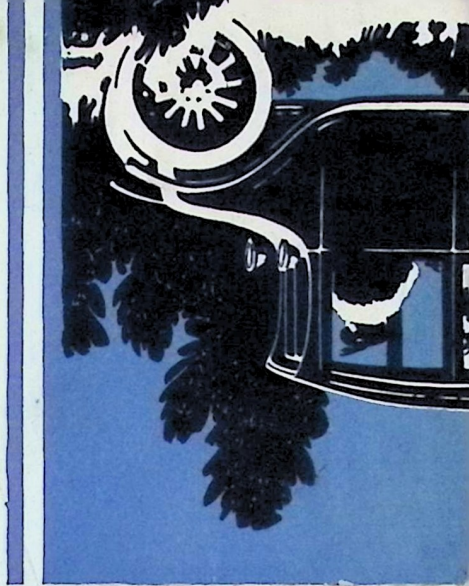
Fully guaranteed by **The Milburn Wagon Company** Established 1848

Toledo, Ohio

IT has every worth-while feature to be had in even the highest priced elec-  
trics—  
But with the additional advantages of lighter weight, simplicity and ease of operation, and greater all-round economy.

*The Milburn Light Electric \$1485*

Your Ideal at Your Price



F.W.Rohrs,  
Rosedale Garage,  
Rosedale, Md.

JAN 5 1918  
1918

BECAUSE of its light weight and simplicity of control, the Milburn Light Electric is unusually easy to handle. The most timid—the most nervous—people drive the Milburn with a justified feeling of perfect security.

Don't fail to see our new Model 22 at the  
Chicago Show, January 22nd, to 29th.

Our dealer proposition is too good to be  
true; we want to explain it to you..