

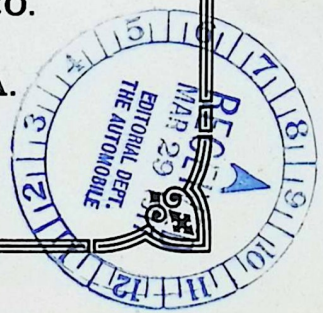
1917

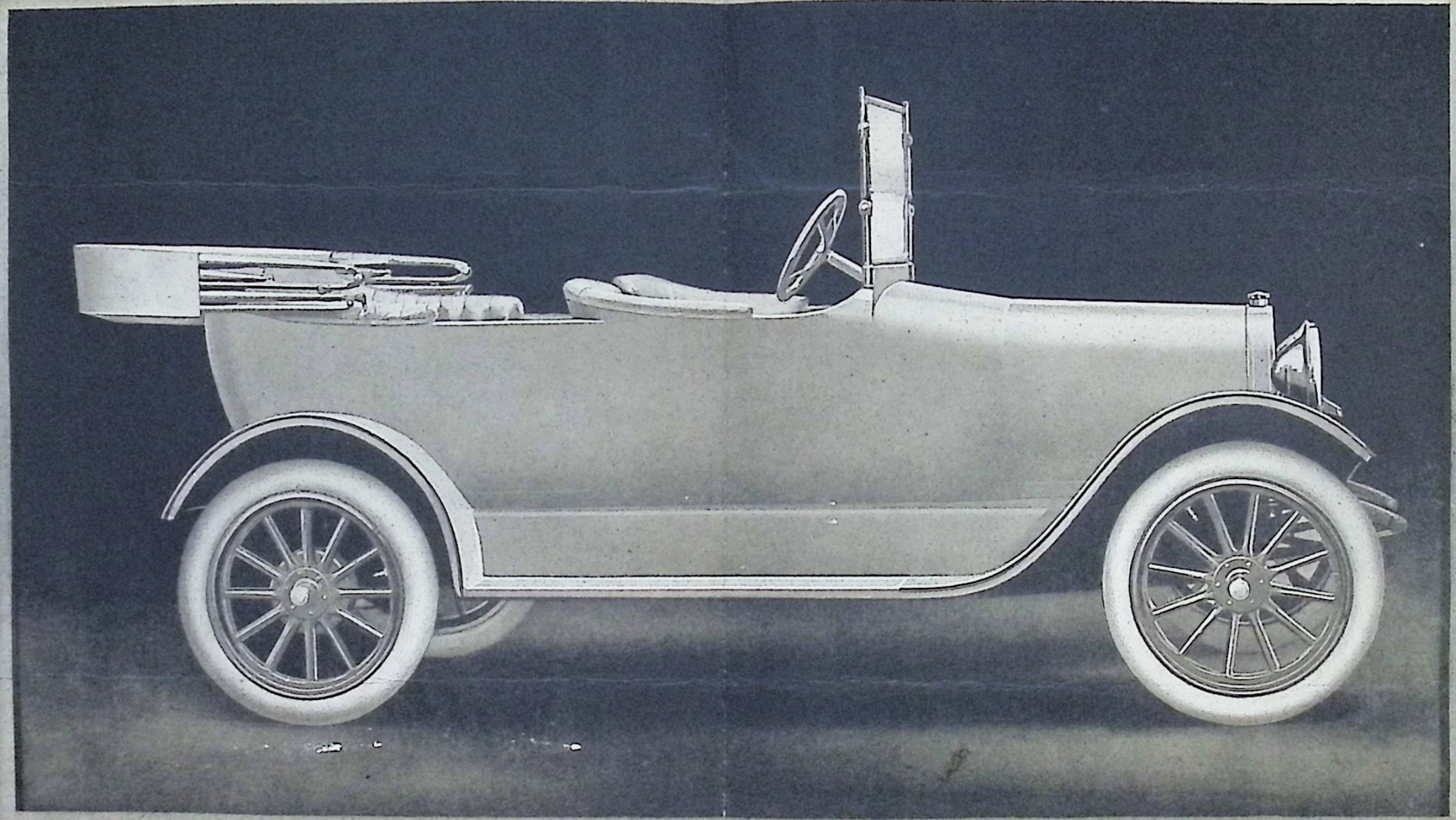
THE ARBENZ "25"

The Only Light Low Priced Completely Equipped Automobile
Above All--A Guaranteed Car

\$675

THE ARBENZ CAR CO.
CHILlicothe, OHIO, U. S. A.





THE ARBENZ 25

SPECIFICATIONS

- MOTOR**—4 cylinder, long stroke, 25 H. P., 3¼ bore, 5" stroke, cast en bloc with detachable cylinder heads, all valves fully enclosed and interchangeable, all steel parts hardened, heat treated and ground.
- OILING SYSTEM**—Positive force feed combined with splash.
- CARBURETOR**—Latest and most efficient type, adjustable hot and cold air supply, very easy starting.
- IGNITION**—Distributing system of the highest efficiency.
- COOLING**—Thermo syphon circulation through large area connections to cellular type radiator of large cooling capacity.
- LIGHTING AND STARTING SYSTEM**—*Disc double* Combined into one unit operating from 12 volt storage battery. Enclosed silent chain drive running in oil. Starting is effected instantly by pressing a button in floor of car.
- CLUTCH**—Of large size, self contained in unit power plant housing fully protected from dirt and oil.
- TRANSMISSION**—Selective sliding type, three speeds forward, one reverse, ball bearing mounted, operated from cane handle type of lever. All gears fully heat treated and ground. All parts running in oil and readily accessible.
- AXLES**—Front axle especially strong, drop forged I beam. Positive lubrication fully provided for. Rear axle full floating, entirely enclosed bevel gear drive, working in oil bath; brakes internal and external of large diameter and ample surface fully protected from oil.
- WHEELS**—Artillery type with demountable rims. Extra rim furnished. After numerous tests this type and size were decided upon as being best for strength, speed and economy of tires.
- TIRES**—30 x 3½ inch Clincher of best known standard make.
- WHEEL BASE**—108 inches. Tread standard.
- SPRINGS**—Front, semi-elliptic; rear, full canti-lever of unique design, insuring easier riding qualities than found in any other car. All provided with efficient lubricating system.
- FRAME**—Especially high grade steel of heavy channel section. Hot riveted.
- STEERING GEAR**—Worm and wheel type, irreversible. 16 inch steering wheel. Controls mounted above steering wheel.
- DRIVE**—Left hand; center control. Emergency brake lever and control lever forward out of way.
- BODY**—Beautiful stream line, exceptionally roomy five passenger body, with divided front seats. Soft and luxurious upholstery, aluminum foot rail, concealed hinges and locks. Standard color black.
- TOP**—One man type, especially easy to operate with close fitting curtains and envelope.
- WIND SHIELD**—Vertical type, ventilating and rain vision.
- GASOLINE TANK**—Carried under cowl with capacity of about 10 gallons. Filler very accessible on instrument board.
- INSTRUMENT BOARD**—On this is mounted speedometer, carburetor control, lighting and ignition switches, gasoline filler and electric dash light.
- HORN**—Under hood, operated by push button.
- SPEEDOMETER**—Stewart magnetic; indicating speed, trip mileage, and season mileage.
- FENDERS**—Latest design crown type of drawn sheet steel, rigidly braced. Corresponding with stream line effect of body.
- LAMP EQUIPMENT**—Two large 10 inch beautifully designed headlights with dimmer attachment and extra pilot globes for city driving. Rear lamp rigidly mounted with self-contained license carrier. Hooded lamp on instrument board for night driving. A convenient switch operates all lamps from current furnished by generator.
- WEIGHT**—1675 pounds.
- REGULAR EQUIPMENT**—Full electric starting and lighting system, demountable rims with extra rim, crowned fenders, one man type, with side curtains and envelope, ventilating rain vision wind shield, Stewart speedometer, electric horn, electric lamps, dash lamp, foot rail, jack, pump, tire repair outfit and tools.
- GUARANTEED**—Under the standard warranty.
- PRICE**—\$675.00 F. O. B. Chillicothe, Ohio, U. S. A.