

ARGYLL
.. CARS ..

1912 MODELS

1009

Argyll

Catalogue of 1912 Model

ARGYLL CARS



ADMINISTRATION BUILDINGS, ALEXANDRIA

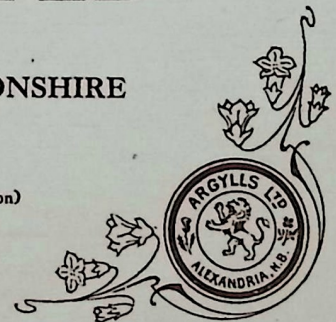
ARGYLLS LIMITED

Head Office: ALEXANDRIA, DUMBARTONSHIRE

TELEPHONE: No. 273 and 274 HILLHEAD (GLASGOW)

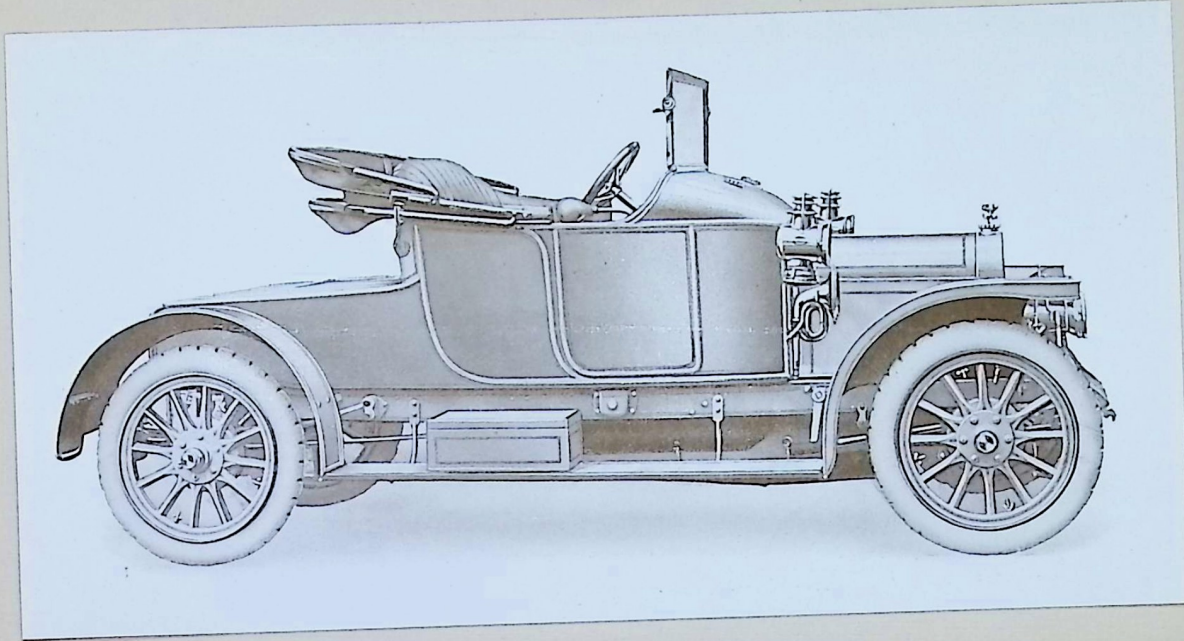
TELEGRAPHIC ADDRESS: "ARGYLLS," ALEXANDRIA ABC CODE (5th Edition)

All Communications to be Addressed to the Company



12 h.p. Two-Seater Car

Argyll



".....The admiration and envy of my friends, I can only describe it as the Rolls Royce of small powered cars."

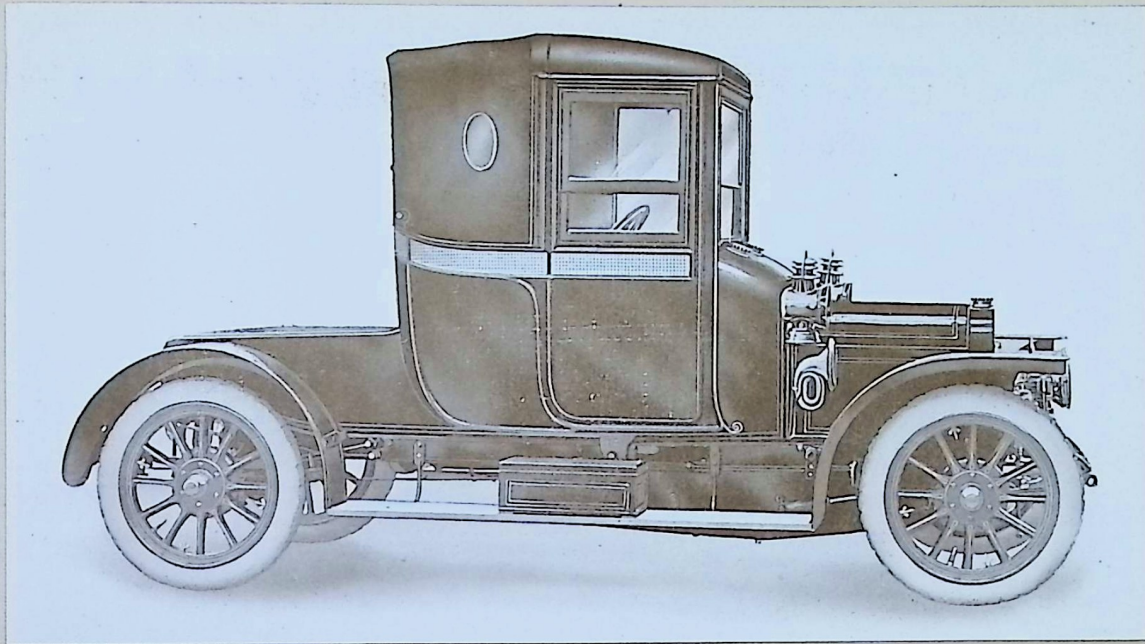
12 h.p. Two-Seater Car

Fitted with 760 x 100 m/m. Dunlop grooved tyres, hood, wind screen, 3 Lucas lamps, Lucas horn, tool outfit and number plates **£315**



12 h.p. Doctor's Coupé

Argyll



"Argylls have always been favourites with medical men."—*Lancet*.

12 h.p. Doctor's Coupé

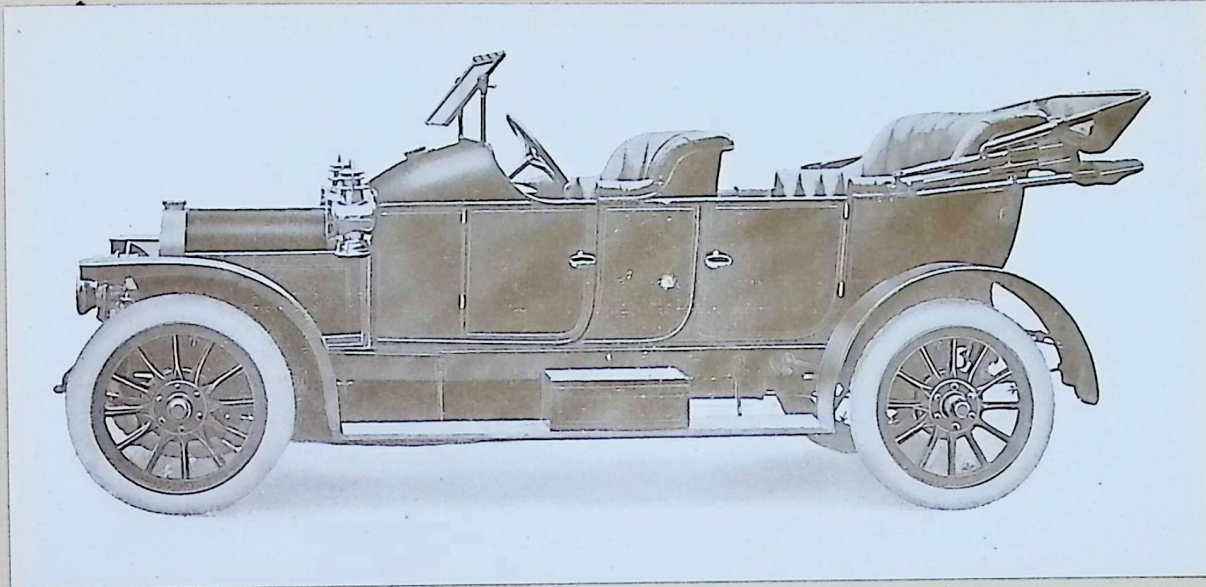
Fitted with 760 × 100 m/m. Dunlop grooved tyres as illustrated (head lamps extra) - £395



12 h.p. Touring Car

(Double Phaeton)

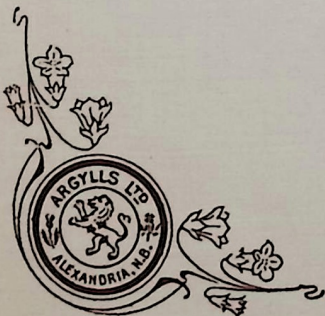
Argyll



"It is, I think, the best designed 12 h.p. Car in the Show."—*Pall Mall Gazette*.

12 h.p. Double Phaeton Car

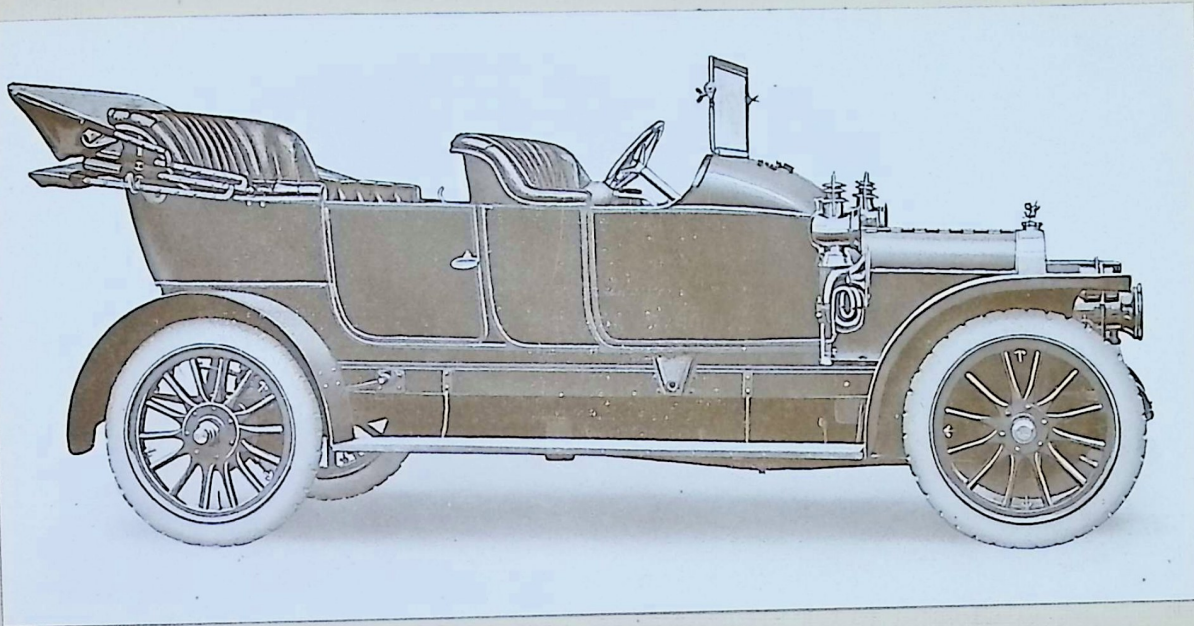
Fitted with 760 × 100 m/m. Dunlop grooved tyres, hood, wind screen, 3 Lucas lamps, Lucas horn, tool outfit and number plates **£335**



15 h.p. Touring Car

(Double Phaeton)

Argyll



"The 'Flying Fifteen' is one of the most efficient moderate powered Cars. It is remarkably well-balanced, running sweetly and silently at all speeds and is a very desirable Car for all round use."

—Scots Pictorial.

15 h.p. Double Phaeton Car

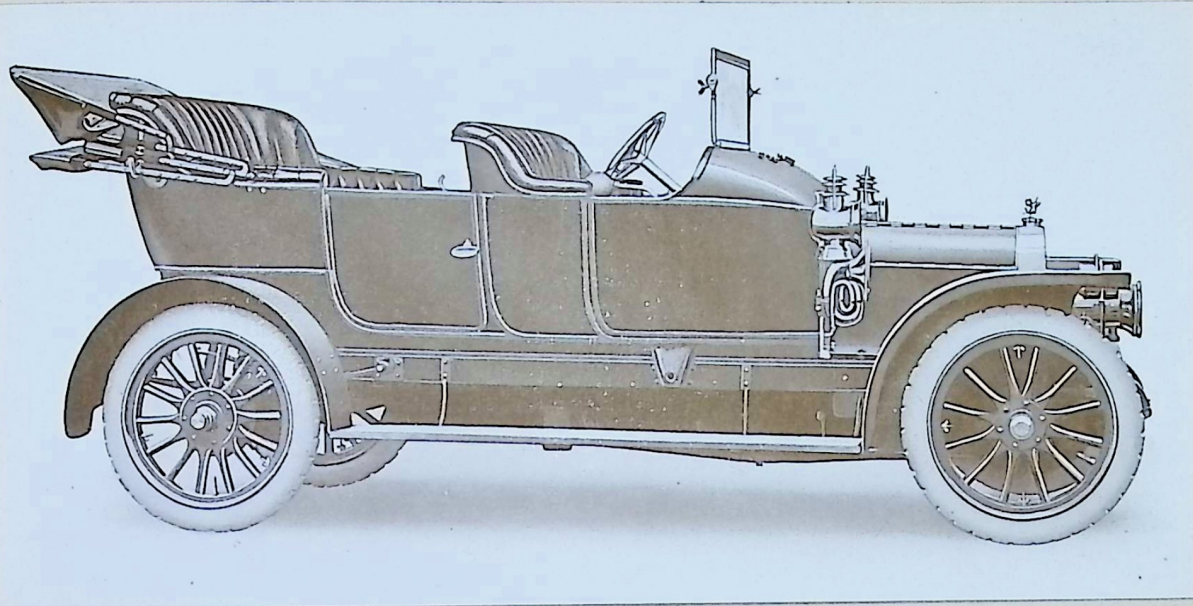
Fitted with 815 × 105 m/m. Dunlop grooved tyres, hood, wind screen, 3 Lucas lamps, Lucas horn, tool outfit and number plates - - - - - **£445**



15 h.p. Touring Car

(Double Phaeton)

Argyll



"The 'Flying Fifteen' is one of the most efficient moderate powered Cars. It is remarkably well-balanced, running sweetly and silently at all speeds and is a very desirable Car for all round use."

—Scots Pictorial.

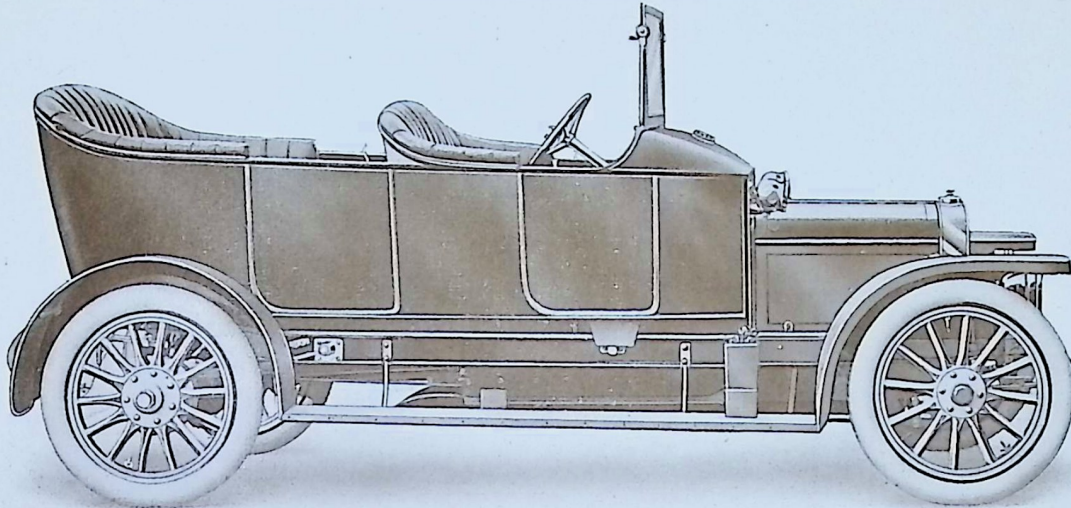
15 h.p. Double Phaeton Car

Fitted with 815 × 105 m/m. Dunlop grooved tyres, hood, wind screen, 3 Lucas lamps, Lucas horn, tool outfit and number plates **£445**



15 h.p. Torpedo Car

Argyll



"It is really a delightful Car, quiet to ride and drive, able to go anywhere where there is an apology for a road, and, as my experience goes, essentially a 'no trouble' Car."—W. WHITTALL.

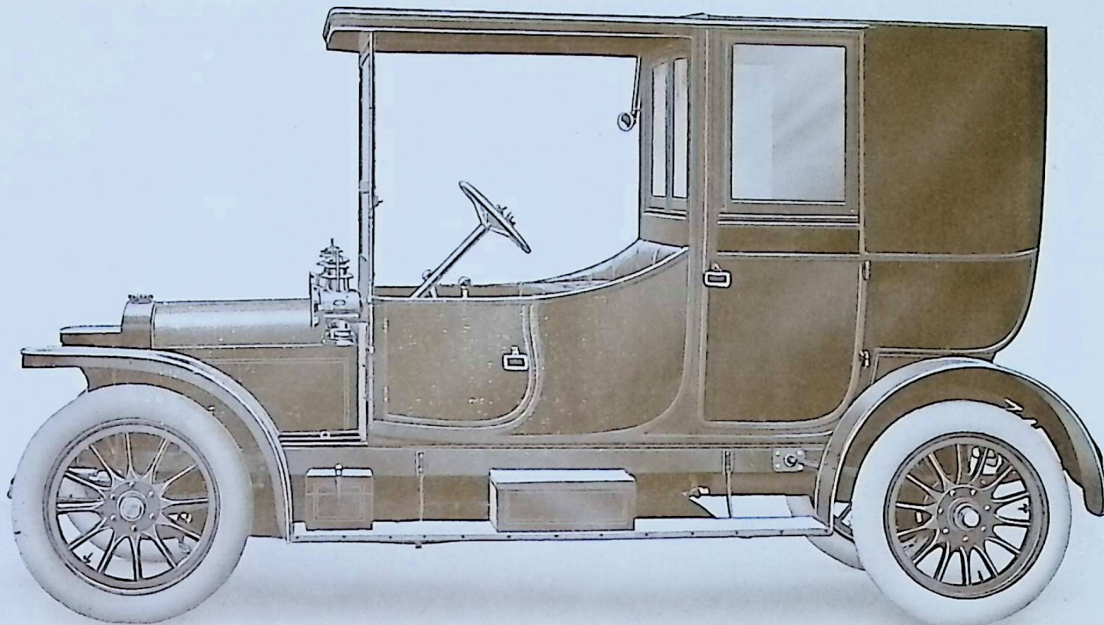
15 h.p. Torpedo Car

Fitted with 815 × 105m/m. Dunlop grooved tyres, hood, wind screen, 3 Lucas lamps, Lucas horn, tool outfit and number plates **£445**



15 h.p. Landaulette

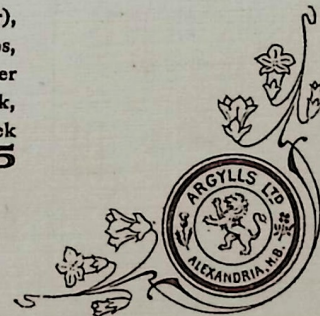
Argyll



"Certainly one of the smartest and most serviceable vehicles."—*Morning Post*.

15 h.p. Landaulette

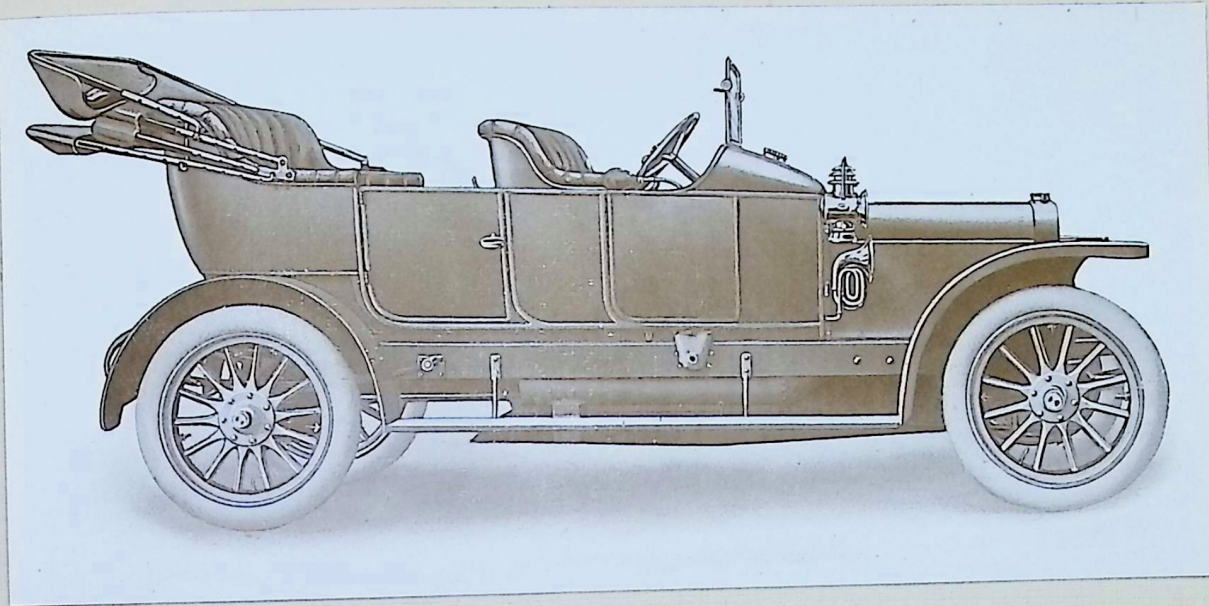
Fitted with 820 x 120 m/m. Dunlop tyres (grooved front, steel-studded rear), extended canopy and screen, usual tool outfit, speaking tube, 3 Lucas lamps, Lucas horn, electric light inside, wire netted roof rail, tool box, number plates, patent leather valances, set of fibre brush mats, hat cords, net rack, card case, cigar rack, and two auxiliary folding seats to interior, with back rests to fold against doors **£535**



20 h.p. Touring Car

(Double Phaeton)

Argyll



“As long as a country produces a Car like the New Argyll—which I consider is the acme of clean and good design—it has nothing to envy or fear from anybody.”—J. DE MARSILLAC.

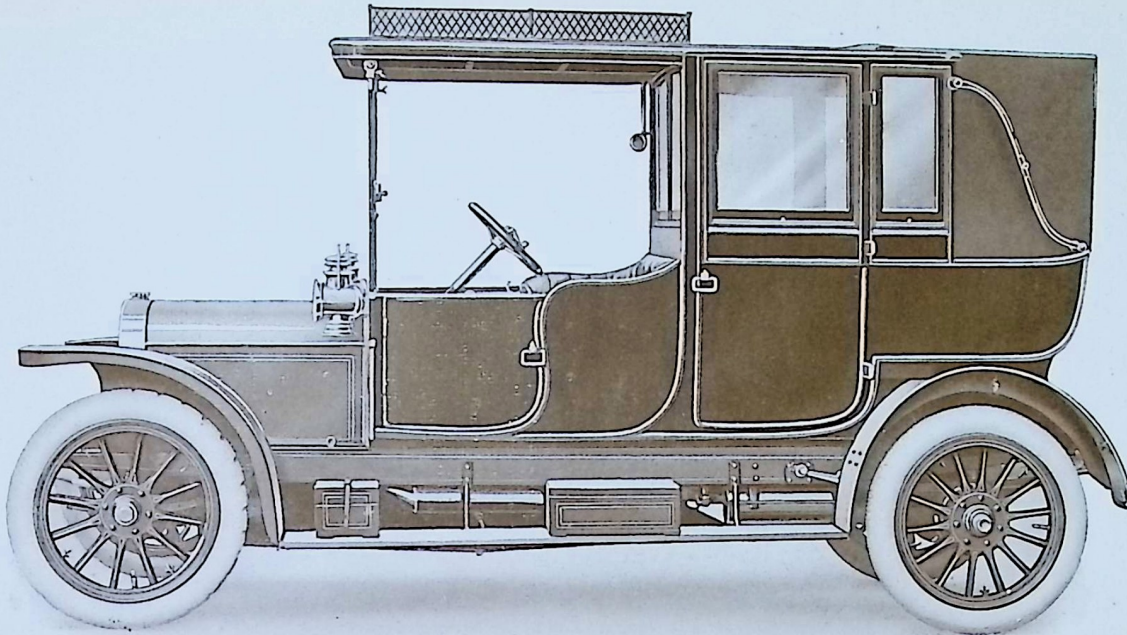
20 h.p. Double Phaeton Car

Fitted with 880 × 120 m/m. Dunlop grooved tyres, hood, wind screen, 3 Lucas lamps, Lucas horn, tool outfit and number plates **£500**



20 h.p. Landaulette

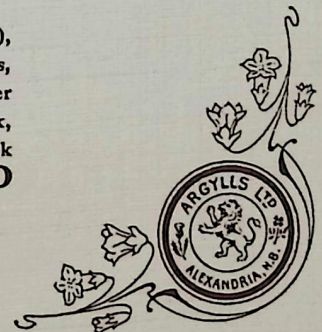
Argyll



"The Argyll Car has no need to fear comparison with any other."

20 h.p. Landaulette

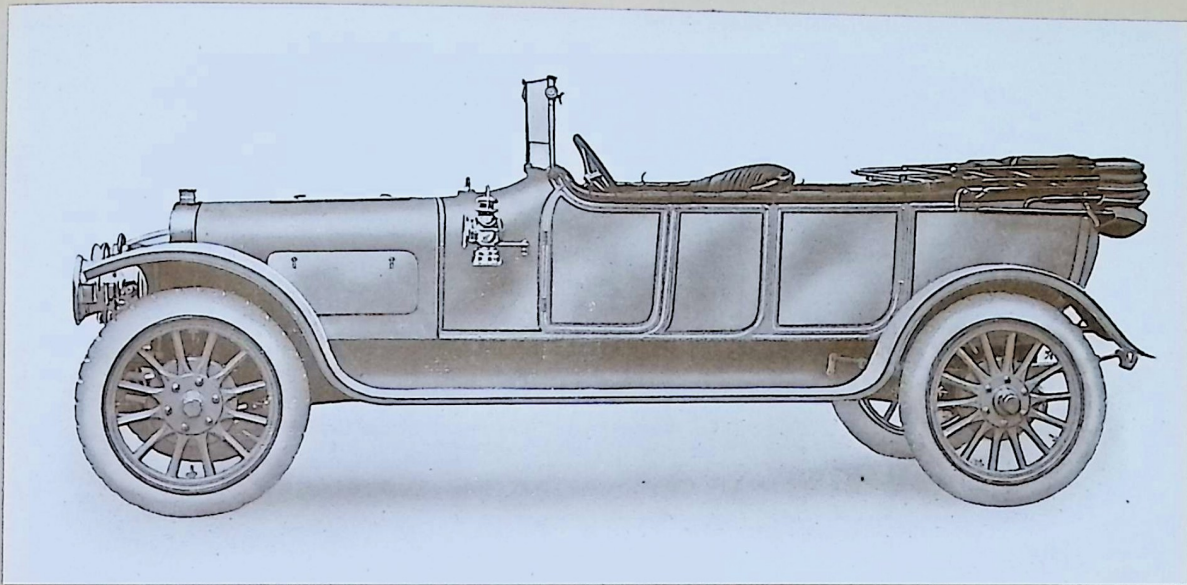
Fitted with 880 x 120 m/m. Dunlop tyres (grooved front, steel-studded rear), extended canopy and screen, usual tool outfit, speaking tube, 8 Lucas lamps, Lucas horn, electric light inside, wire netted roof rail, tool box, number plates, patent leather valances, set of fibre brush mats, hat cords, net rack, card case, cigar rack, and two auxiliary folding seats to interior, with back rests to fold against doors **£630**



25 h.p. Prince Henry Type Car

(Torpedo)

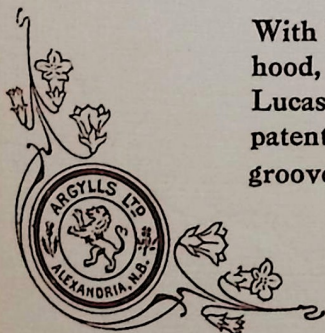
Argyll



“A Chassis which may well be said to be an epitome of all that is up-to-date in Motor Car construction—in fact it is not too much to say it is an All-British triumph.”

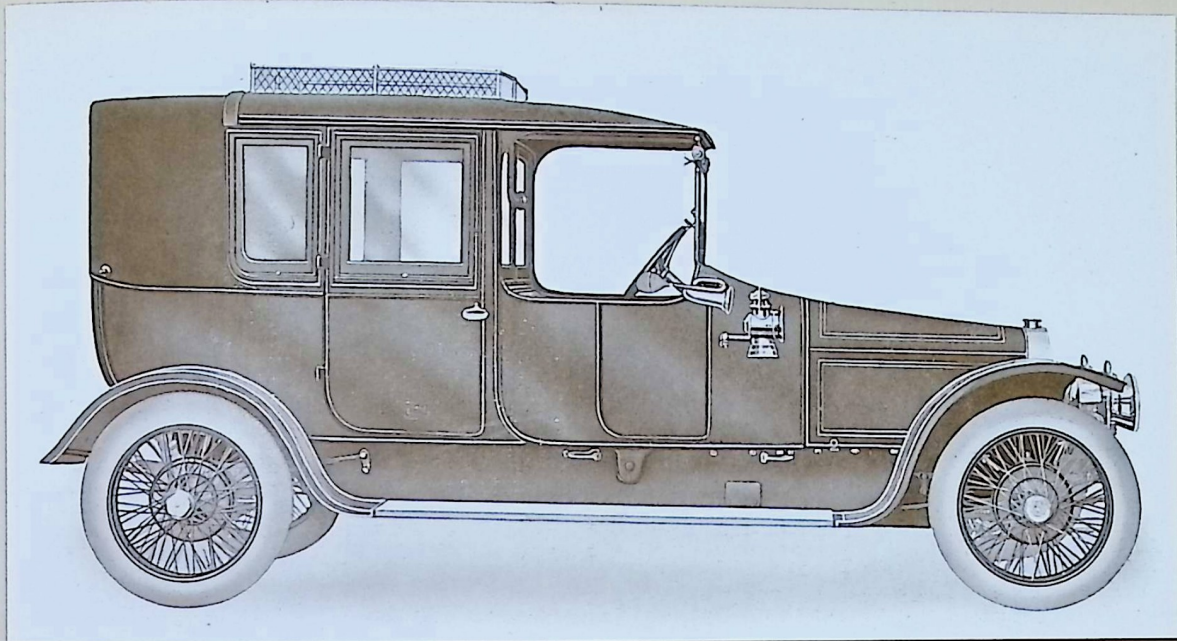
25 h.p. Argyll Patent Single Sleeve-Valve Car

With Dunlop detachable wheels, 880 × 120m/m. Dunlop grooved tyres, hood, wind screen, tool outfit, tool box, Lucas side and tail lamps, Lucas horn, number plates, fittings for dynamo lighting equipment, patent leather valances, and 1 Dunlop detachable wheel with grooved tyre fitted £690



25 h.p. Landaulette

Argyll



"It may be said without exaggeration that never has the firm put out a machine of more merit than the very latest vehicle introduced at Olympia."

—*Sunday Times.*

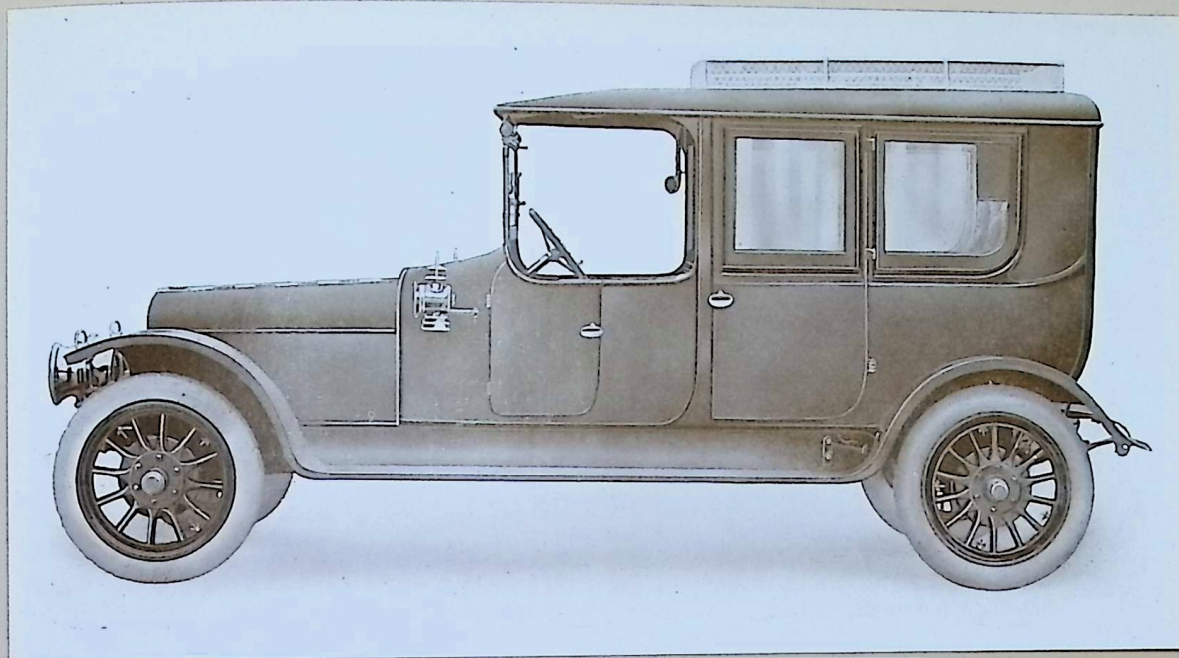
25 h.p. Argyll Patent Single Sleeve-Valve Limousine-Landaulette

With Dunlop detachable wheels, 895 x 135 m/m. Dunlop tyres (grooved front, steel-studded rear), extended canopy and screen, usual tool outfit, speaking tube, 3 Lucas lamps, Lucas horn, electric light inside, wire netted roof rail, tool box, number plates, patent leather valances, set of fibre brush mats, hat cords, net rack, card case, cigar rack, 2 auxiliary folding seats to interior with back rests to fold against doors, patent detachable arm-rest, adjustable foot-stools to interior, corrugated aluminium stepboards, flower glass, french polished mahogany glass frames, fittings for dynamo lighting equipment, and 1 Dunlop detachable wheel with grooved tyre fitted **£800**



25 h.p. Limousine

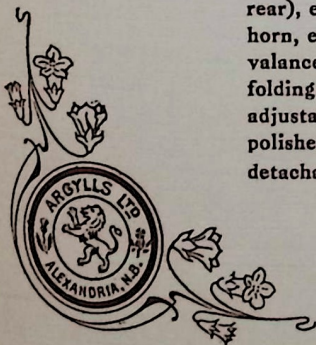
Argyll



"I have had great experience of Argylls and I do not know of anything finer on the market and very few equals."—*Sporting Times*.

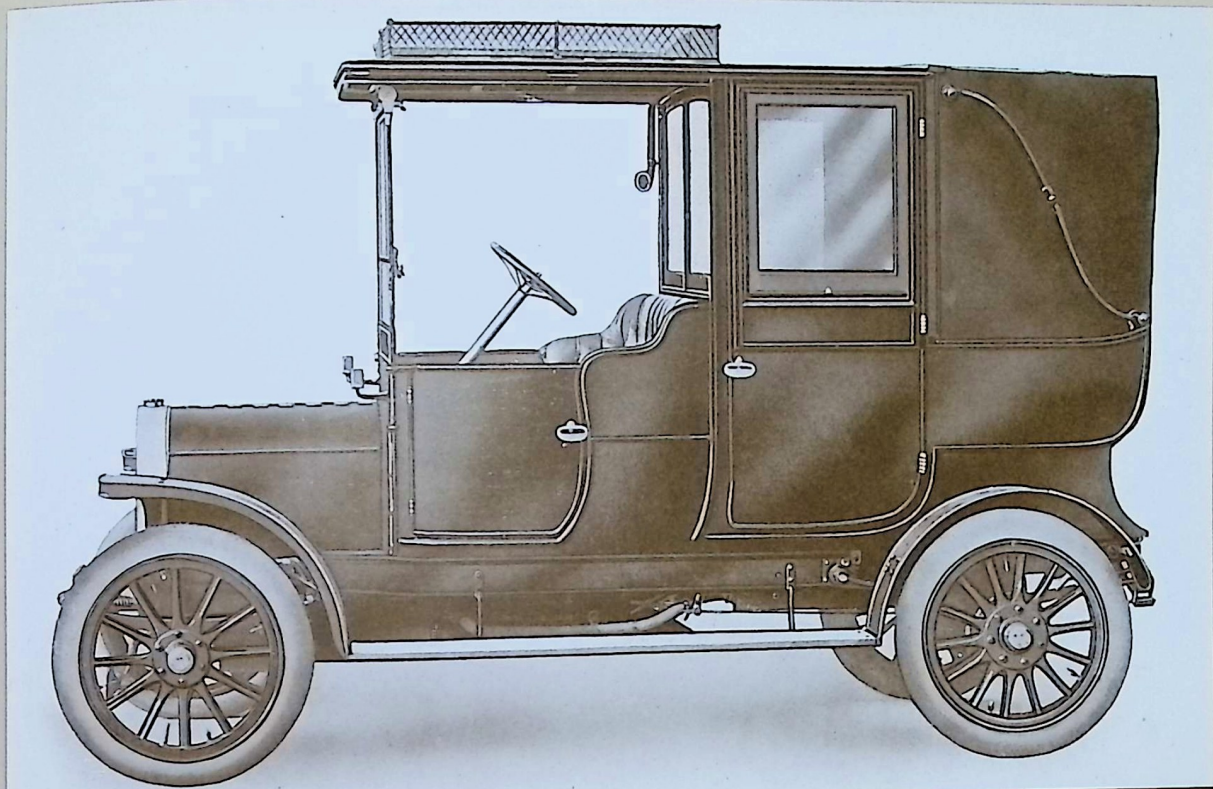
25 h.p. Argyll Patent Single Sleeve-Valve Limousine

With Dunlop detachable wheels, 895 × 135 m/m. Dunlop tyres (grooved front, steel-studded rear), extended canopy and screen, usual tool outfit, speaking tube, 3 Lucas lamps, Lucas horn, electric light inside, wire netted roof rail, tool box, number plates, patent leather valances, set of fibre brush mats, hat cords, net rack, card case, cigar rack, 2 auxiliary folding seats to interior with back rests to fold against doors, patent detachable arm-rest, adjustable foot-stools to interior, corrugated aluminum stepboards, flower glass, french polished mahogany glass frames, fittings for dynamo lighting equipment, and 1 Dunlop detachable wheel with grooved tyre fitted **£800**



15 h.p. Town Carriage

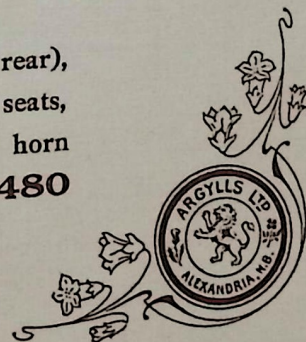
Argyll



"The workmanship and finish are such that they run with remarkable smoothness and silence—an excellent run-about Car."—*British Trade Journal*.

15 h.p. Town Carriage (Four-Seater)

With 815 × 105 m/m. Dunlop tyres (grooved front, steel-studded rear), high front doors, electric light inside, roof rail, folding seats, tool outfit, tool box, speaking tube, 3 Lucas lamps, Lucas horn and number plates **£480**



Specification of 12 h.p. Car

DESCRIPTION.—The principle sizes are :—Wheel base, 9 ft. ; track, 4 ft. 3 in. ; length over all, 12 ft. 4 in. ; width over all, 5 ft. 4 in.

ENGINE.—Four-cylinder type. Cylinders cast *en bloc*. Bore, 72 m/m. ; stroke, 120 m/m.

IGNITION.—High tension magneto of latest type.

CARBURETTOR.—The “Zenith” Carburettor has been selected.

LUBRICATION.—The system is of the most approved forced feed type. The oil is drawn from a reservoir, which is part of the base chamber, by a gear pump of sound construction.

COOLING.—Thermo-syphon system is employed in conjunction with tube radiator of ample dimensions.

CLUTCH.—Flat plate, multiple disc type, running in oil.

TRANSMISSION.—From clutch to gear-box by universal shaft fitted with special coupling. From gear-box to back axle by propeller shaft carried by universal joints at front and rear ends, the whole encased in steel torque tube.

CHANGE-SPEED GEAR.—A range of four forward speeds and reverse is provided. Direct drive on top gear. All gears are controlled by one lever operating in gate quadrant of special design.

FRONT AXLE.—Drop forging of H section.

BACK AXLE.—Has been designed to secure absolute quietness. Worm drive, floating shaft type, fitted throughout with ball bearings.

STEERING.—Enclosed irreversible worm and segment, giving ample steering lock.

ENGINE CONTROL.—By one lever operating on quadrant placed in centre of steering wheel.

BRAKES.—Front wheel brakes—two independent internal expansion brakes of special design on front hubs operated by foot pedal. Back brakes—of the usual expanding type acting on drums mounted on road wheel hubs, and operated by hand lever mounted on rack beside gear control. Brake shoes lined with “Raybestos.”

SPRINGS.—Half elliptic to front ; three-quarter elliptic to rear.

FRAME.—Pressed steel of channel section securely braced and gusseted where necessary, having underframe rivetted to cross-bar for carrying engine and gear-box. A light steel undershield is fitted, extending to rear of gear-box, for protection of mechanism.

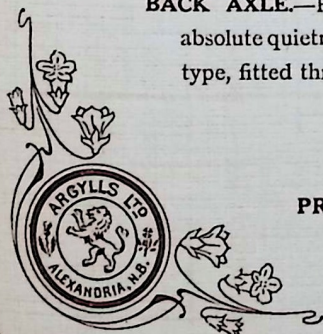
WHEELS.—Artillery type, fitted with 760 by 100 m/m. Dunlop grooved tyres.

BODIES.—Specially smart designs. Double Phaeton and Two-Seater.

COLOURS.—Any standard colour. Special colours at slight extra cost.

ACCESSORIES.—Hood, wind screen, usual tool outfit, three Lucas lamps, Lucas horn, tool box, and number plates.

PRICES. —Standard Chassis with tyres	£275
Standard Double Phaeton Touring Car	335
Two-Seater Car	315



Specification of 20 h.p. The Ideal Touring Car

DESCRIPTION.—The principle sizes are :—Wheel base, 10 ft. 2 in.; track, 4 ft. 7 in. Length over all, 13 ft. 3 in.; width over all, 5 ft. 8 in.

ENGINE.—Four-cylinder type. Cylinders cast in pairs. Bore, 90 m/m.; stroke, 140 m/m.

IGNITION.—Dual ignition of latest type.

CARBURETTOR.—The “Zenith” carburettor has been selected.

LUBRICATION.—The system is of the most approved forced feed type. The oil is drawn from a reservoir, which is part of the base chamber, by a gear pump of sound construction, driven by the cross shaft providing the magneto drive.

COOLING.—Thermo-syphon system is employed in conjunction with tube radiator of ample dimensions.

CLUTCH.—Flat plate, multiple disc type, running in oil.

TRANSMISSION.—From clutch to gear-box by universal shaft fitted with special coupling. From gear-box to back axle by propeller shaft carried by universal joints at front and rear ends, the whole encased in steel torque tube.

CHANGE-SPEED GEAR.—A range of four forward speeds and reverse is provided. Direct drive on top gear. All gears are controlled by the one lever operating in gate quadrant of the usual type.

FRONT AXLE.—Drop forging of H section.

BACK AXLE.—Has been designed to secure absolute quietness. All shafts are carried on ball bearings. The thrust of crown wheel and bevel pinion is also taken on ball bearings.

STEERING.—Irreversible type operated through worm and segment.

ENGINE CONTROL.—By two levers operating on quadrant placed in centre of steering wheel.

BRAKES.—Foot brake—steel band fitted with “Raybestos” lining acting on drum placed immediately behind gear-box. Back brakes of the usual expanding type acting on drums mounted on road wheel hubs, and operated by hand lever mounted on rack beside gear control.

SPRINGS.—Half elliptic to front; three-quarter elliptic to rear.

FRAME.—Pressed steel of channel section securely braced and gusseted where necessary, having underframe rivetted to cross-bar for carrying engine and gear-box. A light steel undershield is fitted, extending to rear of gear-box, for protection of mechanism.

WHEELS.—Artillery type, fitted with 880 by 120 m/m. Dunlop grooved tyres.

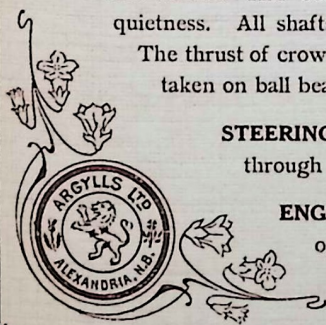
BODIES.—Specially smart designs. Double Phaeton, Torpedo, Landaulette, or Limousine-Landaulette.

COLOURS.—Any standard colour. Special colours at slight extra cost.

ACCESSORIES.—Hood, wind screen, usual tool outfit, three Lucas lamps, Lucas horn, tool box, and number plates.

PRICES.—Standard Five-Seated Touring Car ... £480
 Flush-Sided Double Phaeton Touring Car ... 500
 Standard Chassis, with tyres 420
 Standard Torpedo 510
 Landaulette Chassis with tyres 880 by 120 m/m. (grooved front, steel-studded rear) ... 430

Standard Limousine-Landaulette, with 880 by 120 m/m. Dunlop tyres (grooved front, steel-studded rear), extended canopy and screen, usual tool outfit, speaking tube, three Lucas lamps, Lucas horn, electric light inside, wire netted roof rail, tool box, number plates, patent leather valances, set of fibre brush mats, hat cords, net rack, card case, cigar rack, and two auxiliary folding seats to interior, with back rests to fold against doors 630





Specification of 25 h.p. Patent Single Sleeve-Valve Car

DESCRIPTION.—Open cars—Wheel base, 10 ft. 6 in.; body space, 9 ft. 2 in. by 3 ft.; front of dash to rear wheel centre, 8 ft. 2 in.; over all length, 15 ft.; over all width, 5 ft. 9 in.. Covered cars—wheel base, 11 ft. 3 in.; body space, 9 ft. 11 in. by 3 ft.; front of dash to rear wheel centre, 8 ft. 11 in.; over all length, 15 ft. 9 in.

ENGINE.—The Argyll Patent Single Sleeve-Valve Engine, having four cylinders cast in pairs. Bore, 100 m/m.; stroke, 130 m/m.

IGNITION.—Latest type dual ignition by magneto.

CARBURETTOR.—Has been chosen with regard to maximum efficiency and economy.

LUBRICATION.—The system is of the most approved forced feed type. The oil is drawn from a reservoir, which is part of the base chamber, by a gear pump of sound construction.

COOLING.—The water is circulated by means of a pump, and a draught is induced through the radiator by means of a powerful fan. Radiator of tubular type with large cooling capacity.

CLUTCH.—Flat plate, multiple disc type, running in oil.

TRANSMISSION.—From clutch to gear box by universal shaft fitted with special coupling. From gear box to back axle by propeller shaft carried by universal joints at front and rear ends, the whole encased in steel torque tube.

CHANGE-SPEED GEAR.—A range of four forward speeds and reverse is provided. Direct drive on top gear. All gears are controlled by one lever operating in gate quadrant of special design.

FRONT AXLE.—Drop forging of H section. Two radius rods are fitted.

BACK AXLE.—Has been designed to secure absolute quietness. Worm drive, floating shaft type, fitted throughout with ball bearings.

STEERING.—Enclosed irreversible worm and segment, giving ample steering lock. Height of steering wheel can be adjusted within a range of 5 in.

BRAKES.—Front and rear wheel brakes are fitted. All brakes can be operated either by hand lever or foot pedal. All act together, but compensate diagonally thereby reducing the tendency to side slip.

SPRINGS.—Half elliptic to front; three-quarter elliptic to rear.

FRAME.—Pressed steel of channel section securely braced and gusseted where necessary, having under-frame rivetted to cross-bar for carrying engine and gear box. A light steel undershield is fitted, extending to rear of gear box, for protection of mechanism.

WHEELS.—Dunlop detachable wire wheels are fitted, with Dunlop tyres on all wheels. Open cars, 880 by 120 m/m. Closed cars, 895 by 135 m/m.

BODIES.—Open and closed types of exceptionally smart design.

COLOURS.—Standard shades of blue and green. Special colours at extra cost

PRICES.—Standard Flush-sided Double Phaeton 5-seated Car with Dunlop detachable wheels, 880 by 120 m/m. Dunlop grooved tyres, hood, wind screen, tool outfit, tool box, Lucas side and tail lamps, Lucas horn, number plates, fittings for dynamo lighting equipment, patent leather valances, and one Dunlop detachable wheel with grooved tyre fitted £690

Standard Chassis with Dunlop detachable wheels, 880 by 120 m/m. Dunlop grooved tyres, and one Dunlop detachable wheel with grooved tyre fitted £565

Landaulette Chassis with Dunlop detachable wheels, 895 by 135 m/m. Dunlop tyres (grooved front, steel-studded rear), and one Dunlop detachable wheel with grooved tyre fitted £585

Standard Limousine or Limousine-Landaulette with Dunlop detachable wheels, 895 by 135 m/m. Dunlop tyres (grooved front, steel-studded rear), extended canopy and screen, usual tool outfit, speaking tube, three Lucas lamps, Lucas horn, electric light inside, wire netted roof rail, tool box, number plates, patent leather valances, set of fibre brush mats, hat cords, net rack, card case, cigar rack, two auxiliary folding seats, to interior with back rests to fold against doors, patent detachable arm-rest, adjustable foot-stools to interior, corrugated aluminum stepboards, flower glass, french polished mahogany glass frames, fittings for dynamo lighting equipment, and one Dunlop detachable wheel with grooved tyre fitted £800

