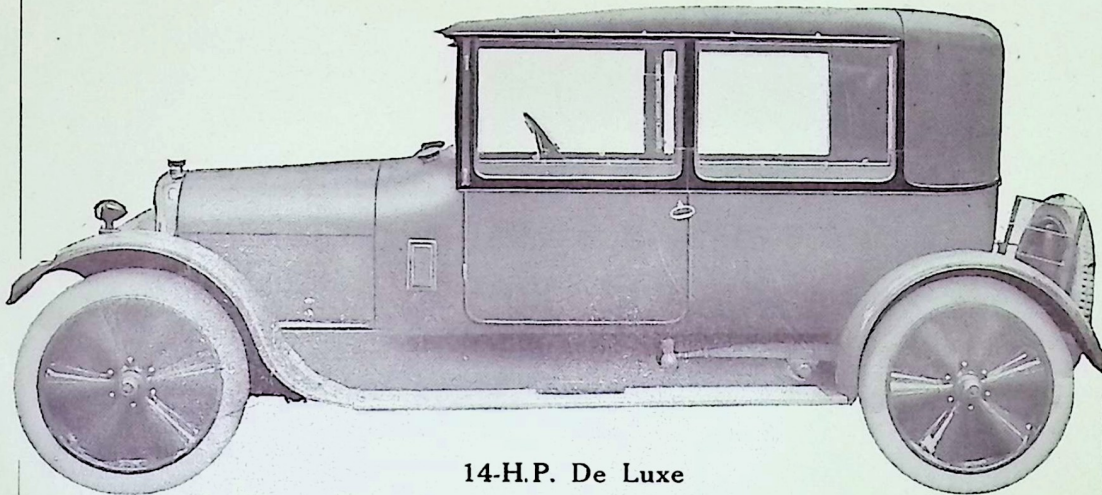


Angus-Sanderson



14-H.P. De Luxe

Four-seated Coupé Model

Brief Specification

Engine	Tylor	Ground clearance	9 in.
Bore and Stroke	76 × 127	Springs	Front, semi-elliptical; rear cantilever
Magneto	High tension	Tyres... ..	815 × 105 (five)
Cooling	Thermo-syphon	Wheelbase	10 ft.
Gears	Three forward and reverse	Brakes	Internal expanding; both on rear wheels
Clutch	Cone	Track	4 ft. 4 in.
Transmission!	Cardan Shaft	Overall length	14 ft. 3 in.
Final drive	Bevel		
Overall width	5 ft. 3 in.		

Including Lucas Electric Starting and Lighting, Spare Wheel with Tyre, Speedometer, Clock and Luggage Grid.

£825

DELIVERY
AT
BIRTLEY, DURHAM

NOTE.—Specification and price are necessarily subject to the possibility of alteration, but prospective purchasers are given the option of cancellation of their order in the event of the price being increased.

BIRTLEY

Sir Wm. Angus,
Sanderson & Co
Limited

DURHAM