

# GWYNNE CARS

A  
GWYNNE  
CAR

WON THE  
PREMIER AWARD,  
ROYAL  
AUTOMOBILE  
CLUB'S  
1,000 MILES  
SMALL CAR TRIALS



A  
GWYNNE  
CAR

WON THE "DAILY  
CHRONICLE" 250  
GUINEA CUP FOR  
MOST MERITORIOUS  
PERFORMANCE  
IRRESPECTIVE OF  
CLASS

GWYNNE CARS LTD., Church Wharf, Chiswick, London, W.4

Phones: Chiswick 1780 and 1781

Grams: "Gwynne Cars, Chiswick"



## The Gwynne 10 Car

### THE TOURING TWO-SEATER.

Designed with the object of providing the refinements of a high-class coupé at the price of an ordinary open model, this Two Seater with double dickey seat is a distinct advance in car construction. Roominess has been given particular attention, and both front seat and dickey seat are most comfortable. When closed the car is entirely draught proof, and a feature which is unusual is the very large luggage space. The handsome body is upholstered in best quality leather. There is a double windscreen, slightly sloping, and the neat and substantial hood, complete with rigid side curtains, enables the car to be converted to a closed vehicle when desired, with the utmost ease. Dual tone finish, £5 extra.

### THE TOURING FOUR-SEATER.

The touring body on the Gwynne chassis makes a particularly attractive car. It seats four persons in perfect comfort. The seats have been carefully designed as to slope and height, and the high grade leather upholstery is extremely comfortable. The front seat is adjustable for position. The doors are of ample width, and combined with the low chassis frame make entrance and exit very easy. All-weather side curtains, which can be used with or without the hood, are included in the standard equipment. The spare wheel is carried in an accessible position. Every detail has received the most careful attention and the result is a car of unusually fine quality—a typical Gwynne product in every respect. Dual tone finish, £5 extra.

### THE "LONDON" MODEL SALOON DE LUXE.

The ideal of refined, luxurious closed car comfort for both town and country work has been achieved in this magnificent specimen of the engineers' and body-builders' craft. The body has four exceptionally wide doors making entering or leaving the Saloon an action of perfect ease. Interior roominess is everything that can be desired, and front seats are adjustable. The windows open smoothly and without effort. The windscreen is framed in metal, and a handsome framed rear light of exceptional size. The finish of the body is magnificent, and refinements, and nickel fittings are faultless. Upholstery is of antique grain buffed leather.

### THE "CHISWICK" MODEL FABRIC SALOON.

The Fabric method of body construction is undoubtedly the most suitable for an enclosed car on a chassis of this type. The flexibility of the body work, the freedom from tendency for body noises to develop, and the curtailment of weight, are all desirable factors in a car designed expressly for all round use.

In appearance this Saloon model possesses most attractive lines. The low chassis and running boards permit of easy entrance and exit, and with the resulting low centre of gravity the car holds the road safely even at the highest speeds.

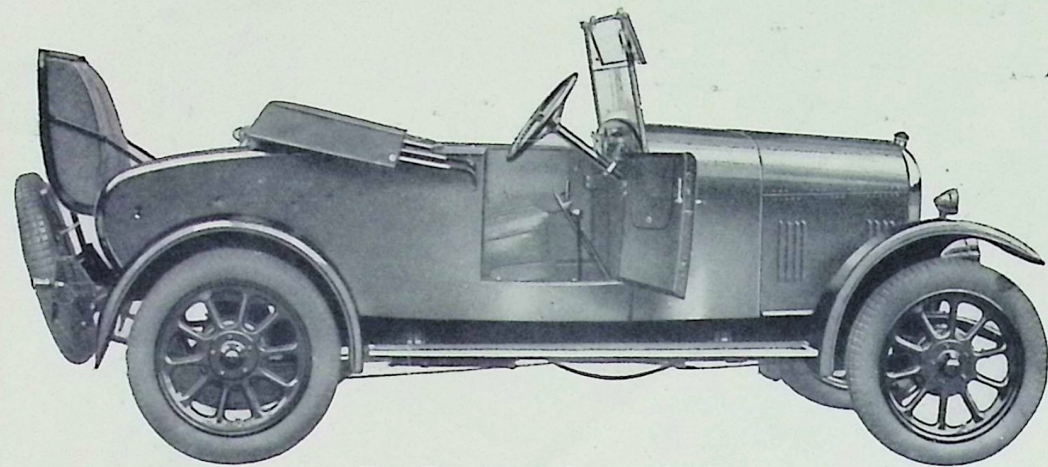
The four-light type of body presents a most distinguished appearance. The interior is upholstered in best quality leather. The front seat is adjustable, and there is an atmosphere of comfort and refinement which makes travelling in the Gwynne Fabric Saloon thoroughly pleasurable.

### THE "ENGLAND" MODEL FABRIC SALOON.

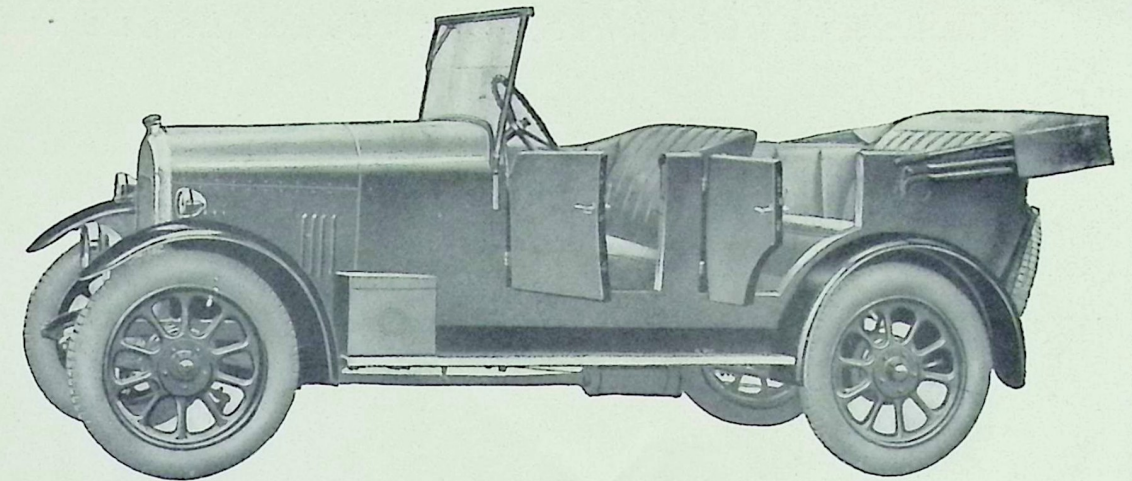
This exquisite body is specially built for the Gwynne chassis by Messrs. Gordon England, Ltd., upon their patent box girder construction and mounted on three points only. Two very wide doors are provided with sliding windows and patent door locks. Fixed screen with large ventilator at the top. Pneumatic upholstery trimmed with real leather, electric light in roof, also roof ventilator and rear window blind. The accommodation is ample, seating four adults in comfort, and space is provided at the rear of the body for suit cases, etc. The standard two colour scheme of either black and scarlet or black and light blue, makes this model an extremely attractive one.

### THE "ENGLAND" MODEL SPORTS TWO-SEATER.

This is another fine example of the body-work by Messrs. Gordon England, Ltd. The body has two doors enabling the driver to leave the car without disturbing the passenger. The real leather trimmed pneumatic upholstery is most comfortable. The wind screen is "V" shape and fixed, detachable rigid side curtains are provided which completely protect the occupants when the hood is raised. Ample space is provided for luggage. The standard two colour finish is the same as the "England" Model Saloon. Altogether a really handsome, smart and speedy car.

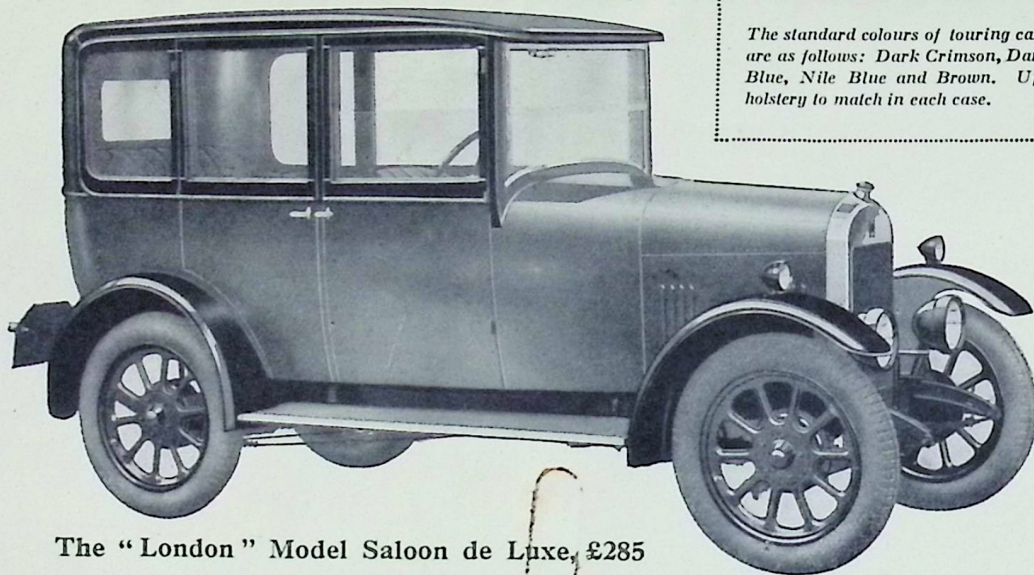


The Touring 2-Seater, £220



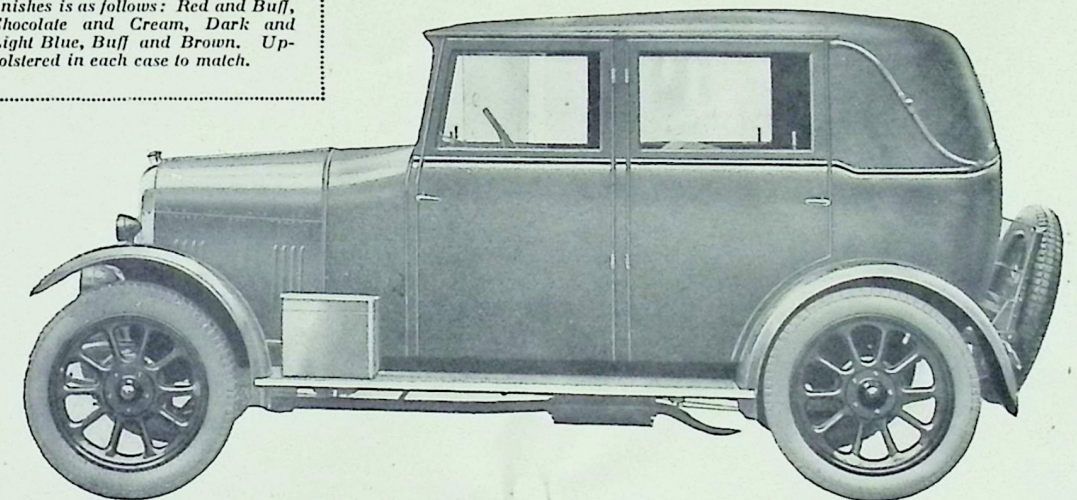
The Touring 4-Door 4-Seater, £225

The standard colours of touring cars are as follows: Dark Crimson, Dark Blue, Nile Blue and Brown. Upholstery to match in each case.

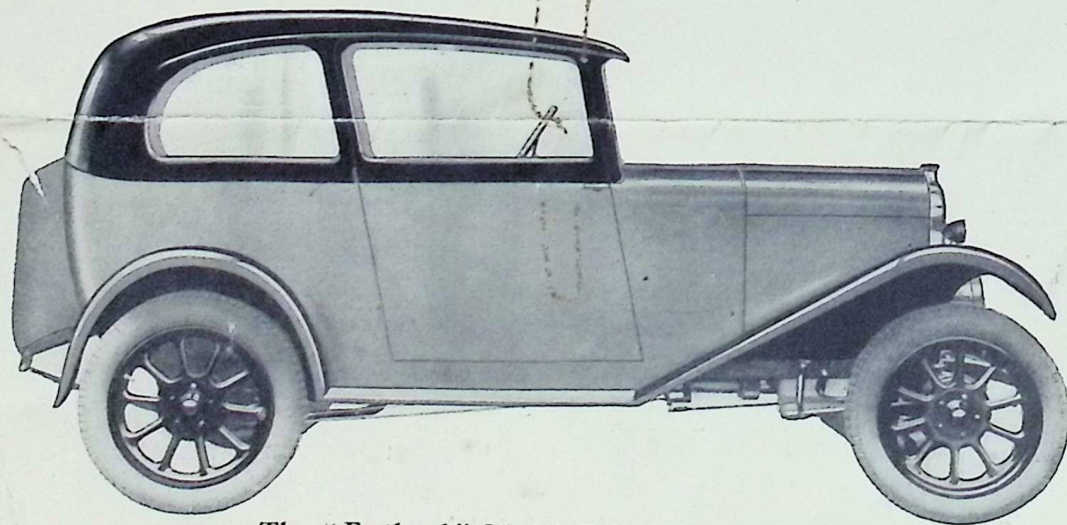


The "London" Model Saloon de Luxe, £285

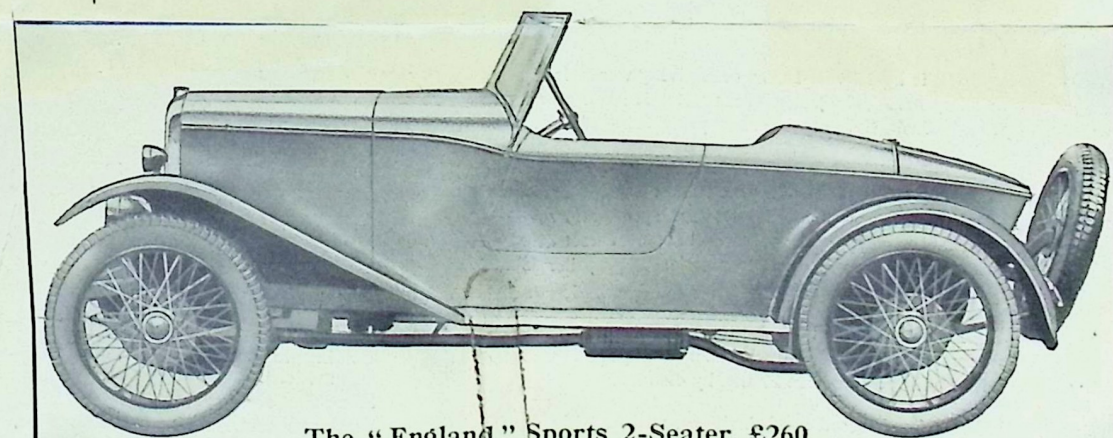
The standard range of Dual Tone finishes is as follows: Red and Buff, Chocolate and Cream, Dark and Light Blue, Buff and Brown. Upholstered in each case to match.



The "Chiswick" Model Fabric Saloon, £285  
Above Saloon on Sports Chassis, £315



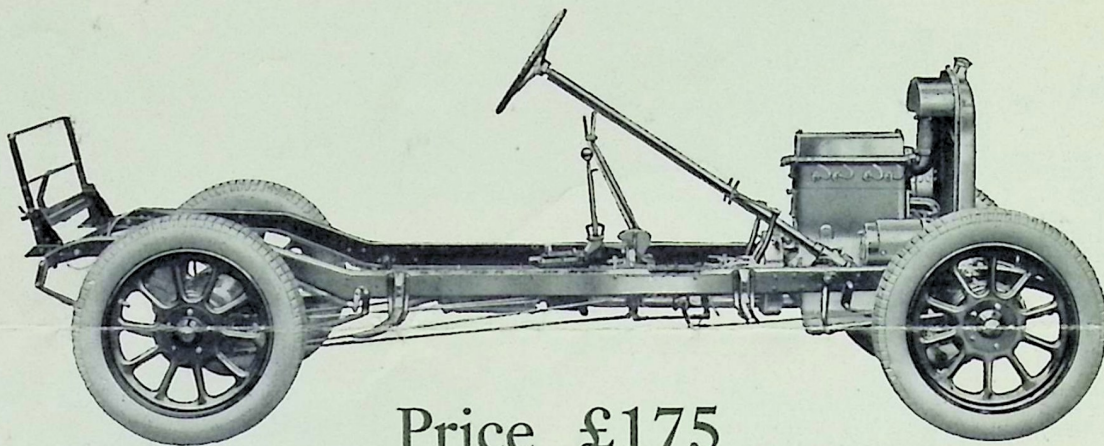
The "England" Model Fabric Saloon, £265  
Above Saloon on Sports Chassis, £295



The "England" Sports 2-Seater, £260  
Above Body on Standard Chassis, £230

SPECIAL NOTE.—All Gwynne Cars are GUARANTEED exclusively under the generous terms of our Guarantee Form given with each car. We have, if desired, on Deferred Terms, by payment of a first deposit of 25 per cent. of the purchase price and the balance

# The Chassis of the Gwynne 10



Price £175

Sports Chassis, Wire Wheels, £205

## GENERAL SPECIFICATION

*NOTE.—Prices and Specifications in this List are subject to alteration without notice. All Prices quoted are for delivery ex Works (London).*

**ENGINE.**—Four cylinder. Bore 63 m/m. Stroke 100 m/m. (1247c.c.). R.A.C. Rating, 9.8 h.p. Tax, £10. Cylinders cast monobloc. Thermo syphon cooling. Overhead valves actuated by camshaft in crankcase and push rods. Detachable cylinder head carefully machined inside to ensure even compression and smooth running. Balanced 3 bearing crankshaft. Pressure lubrication throughout, oil being forced to all mainshaft and big-end bearings, and to overhead valve gear. Oil is filtered during circulation, and pressure gauge on fascia board records oil pressure. Valve gear is totally and extremely silent due to the special arrangement of pressure oil feed through rockers. Camshaft is machined from solid bar, bearings being lubricated under pressure, and is driven by silent gears.

Ignition is by 12 volt Lucas coil, giving wonderful results at all speeds. The Solex carburettor is fed from gravity tank in dash, the petrol consumption being 40 m.p.g.

**GEAR BOX AND TRANSMISSION.**—The Clutch is of the inverted cone type, needing no lubrication. Gearbox is a separate unit and has three forward speeds and reverse; central change speed lever gate change. Direct drive on top gear. Transmission by enclosed propeller shaft. Spiral bevel final drive.

**SUSPENSION.**—By half-elliptic springs in front and back, underslung at back. All wheels, including spare, are fitted with Dunlop tyres, size 27 ins. by 4.40 ins.

**WHEELS.**—Pressed steel Artillery, with quickly detachable 5-stud attachment. Wire wheels can be fitted at an extra charge of £10.

**BRAKES.**—Fully compensated. Footbrake applies brakes on all four wheels. Handbrake operates brakes on rear wheels. Quick and accessible adjustment is provided.

**STEERING.**—Worm and complete worm wheel: very "light" in operation. The angle of the steering column is adjustable.

**CHASSIS LUBRICATION.**—By grease gun throughout.

**MEASUREMENTS.**—Overall length of complete car, 11 ft. 10 ins. Width, 4 ft. 9 ins., engine car to be comfortably housed in a 12 ft. 6 ins. by 5 ft. 6 ins. garage.

**GENERAL EQUIPMENT.**—All models are equipped with:

- Electric engine starter, 12 volt
- Five-lamp lighting set, 12 volt.
- Electric horn, 12 volt.
- Eight-day clock.
- Speedometer.
- Automatic screen wiper.
- Dash lamp.
- Shock absorbers at rear.
- Folding luggage grid, (except on 2-seater Sports models).
- Spare wheel and tyre.
- Seating accommodation in rear.
- Full kit of tools, jack, pump
- Choice of body colour is given

**SPECIAL NOTE.**—All Gwynne Cars are GUARANTEED exclusively if desired, on Deferred Terms.