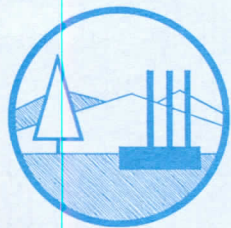


**1968
ANNUAL
REPORT**



**SPRINGFIELD AREA
CHAMBER OF COMMERCE**



YOUR SPRINGFIELD AREA CHAMBER OF COMMERCE

WHAT IT IS

It is a voluntary organization representing over 600 of your fellow businessmen and women working together to insure the continued growth and prosperity of the Springfield Area, the Metropolitan Area and Lane County.

WHAT IT DOES

It represents and speaks for Springfield Area business as the only organized effort continually seeking to maintain a good business climate in which you operate a business, industry or profession and from which you profit and benefit.

HOW IT WORKS FOR YOU

Members themselves furnish the projects that are the basis for all community action. The Program for Action is revised annually to meet the needs of our growing community and area. Suggested programs may be presented to your Chamber at any time for Board and committee consideration and action. Some objectives may be completed in a relatively short time, some in a year, and others in longer time periods.

HOW IT IS GOVERNED

The constitution and by-laws and the statement of policy provide the framework by which your Chamber is governed and operated. The principal executive bodies of the Chamber are the Board of Directors and the Executive Committee. The organization's chief executive officers are the president, vice presidents and treasurer. The principal administrative officer is the chamber manager.

AS A MEMBER

You give the Chamber the benefit of your ideas, opinions, experience, time and financial support to improve the community and area.

WHO MAY BECOME A MEMBER

Any reputable person, business, industry, professional office or association wishing to advance the commercial, industrial, professional, and civic and cultural interests of the Springfield and Lane County area.

TO THE MEMBERSHIP:

Having been a part, this year, of such an aggressive and growing organization as the Springfield Area Chamber of Commerce has been a grand and rewarding opportunity.

Springfield is a wonderful community and its citizens the finest. The Chamber embodies a cross section of our entire community, and it endeavors to create a better community for all citizens.

The response for financial support and project participation has been tremendous on the part of our board, chairmen, and membership. We leave the Chamber in an excellent financial position, which will enable Jim Larson to plan and budget for the next year from a firm base. The membership committee has met our goal of nearly 100 new members and are to be congratulated for bringing in to our organization this new talent and manpower to assist in shaping a better community for all.

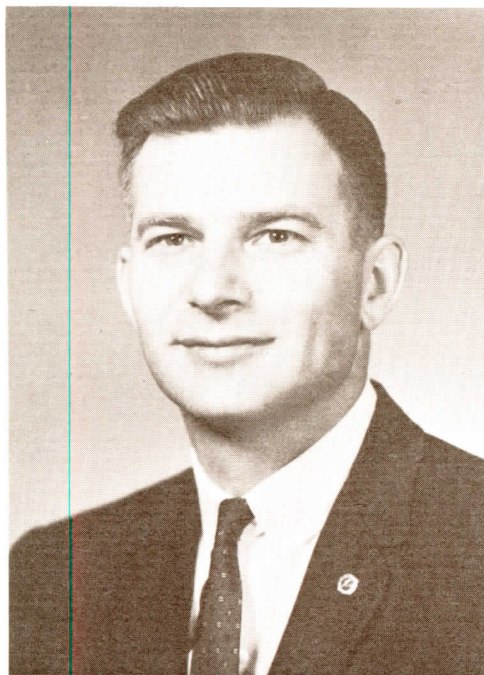
All committees functioned well and worked on numerous projects during the year. The staff, as always, was responsive and cooperative in managing and carrying out the functions of the Chamber. My heartiest thanks to them. Mayor John McCulley and City Manager Claude Malone were always willing, ready and able to assist in any project that meant progress for our community and were invaluable to me this past year.

There are so many who deserve credit for the accomplishments during the year that I couldn't list them all, but I am sure they all know how much I appreciated their help.

There is much left to do in our community; but with the spirit, enthusiasm, and talent in Springfield, I am certain it will be done.

Sincerely,
M. C. EDBERG
Past President





Community progress through responsible group action is the continuing master goal of the Springfield Area Chamber of Commerce.

Community progress is assured through cohesive chamber membership interested in the maximum good for the whole community.

Community progress is attained through a healthy economic climate supported by growing business and industry.

Community progress is assured through your personal commitment of time as well as monetary contribution to chamber work.

Community progress is attained through support of high calibre educational and city government programs.

Community progress is mirrored to the nation through beautification of buildings and property.

Community progress is you.

JAMES E. LARSON
President

OFFICERS AND DIRECTORS . . . 1968

Martin C. Edberg, President

James E. Larson, Vice-President

Harold H. Berg, Treasurer

DIRECTORS

Clarence L. Scherer
Frank Kosciolek
Gary A. Buell
William S. Powell

Dr. T. L. Johnson
John W. Nelson
Leonard A. Wildish
Vern A. Meyer

George M. Zellick
Claude D. Malone
John E. McCulley
Dave Gault

Leonard A. Wildish, Immediate Past President

OFFICERS AND DIRECTORS . . . 1969

James E. Larson, President

George M. Zellick, 1st Vice-President

Gary A. Buell, 2nd Vice-President

John W. Nelson, Treasurer

DIRECTORS

Clarence Scherer
Harold Berg
Leonard Wildish
Frank Kosciolek
Dr. William Post

Mike Rosenberg
Tom Denning
Vern Meyer
Anskar Petersen
Curt Luckey

Martin C. Edberg
Claude D. Malone
John E. McCulley
Dave Gault

Martin C. Edberg, Immediate Past President

STAFF

C. Robert Smith, Manager

Lela Johnson, Office Manager

Donna Strom, Secretary

THE BOARD OF DIRECTORS 1968



Front Row: William S. Powell; Dr. T. L. Johnson; Harold H. Berg, Treasurer; Martin C. Edberg, President; James E. Larson, Vice President; Clarence Scherer.

Back Row: Vern A. Meyer; Claude E. Malone, City Manager; John E. McCulley, Mayor, City of Springfield; Dave Gault, President, Junior Chamber of Commerce; C. Robert Smith, Manager; Gary A. Buell; and Frank Kosciolek.

Not shown: Leonard A. Wildish, Immediate Past President; John W. Nelson, and George M. Zellick.

SPRINGFIELD AREA CHAMBER OF COMMERCE

CONSOLIDATED FINANCIAL STATEMENT

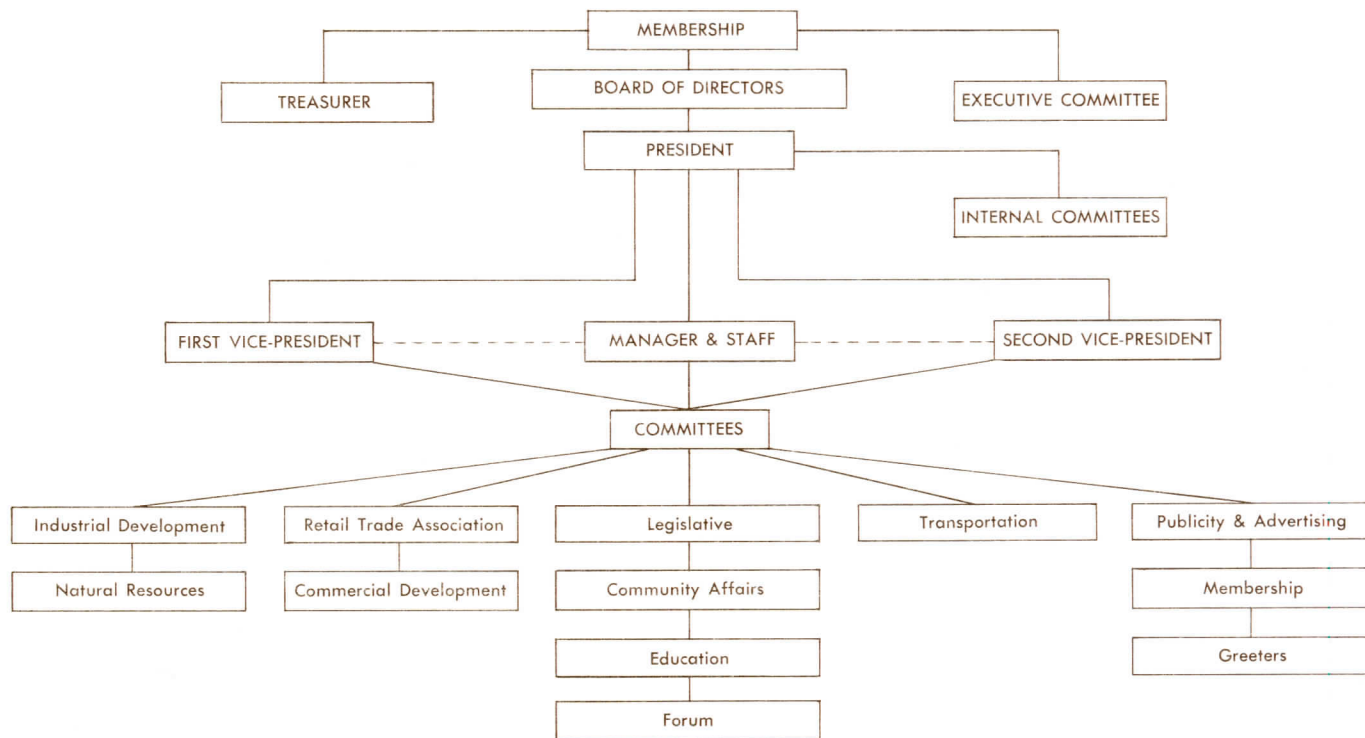
JANUARY 1 THROUGH DECEMBER 31, 1968

ITEM	1967 ACTUAL	1968 ACTUAL
INCOME		
Membership Dues	\$26,821.68	\$31,875.52
Other Income	1.30	419.78
Resale of Material	690.78	479.30
Total Income	<u>\$27,513.76</u>	<u>\$32,774.60</u>
EXPENSES		
Salaries	\$14,918.38	\$16,417.72
Quarters	2,238.90	2,291.87
Operations	7,883.05	7,212.93
Committees	3,247.82	3,195.87
Contingency	501.75	529.04
Total Expenses	<u>\$28,789.90</u>	<u>\$29,647.43</u>
Excess of Income over Expenses	\$ (1,276.14)	\$ 3,127.17
Cash at Beginning of Year	9,458.08	9,786.68
Cash at End of Period	<u>\$ 8,181.94</u>	<u>\$12,913.85</u>

WHAT DOES MY INVESTMENT IN THE SPRINGFIELD AREA CHAMBER OF COMMERCE DO FOR ME?

- It makes money for you** — as the only full-time organization continually seeking to maintain a prosperous and dynamic economy from which you profit. As it grows and prospers, so does your business.
- It helps build your business** — through the work of your various chamber committees dedicated to making the Springfield Area a better place in which to do business.
- It helps your tax situation** — by working to attract diversified industries and to encourage industrial development and expansion. Also, your legislative committee is working to obtain maximum benefits for your tax dollar.
- It helps improve your community** — through efforts of a community affairs committee dedicated to making the Springfield Area a better place in which to live.
- It protects and increases your investments** — by focusing the talents of nearly 600 community leaders on today's most urgent needs.
- It represents you** — in such fields as industrial development, natural resources, civic affairs, taxation, highway, recreation and legislative matters.
- It recruits new payrolls for you** — by working to bring additional business and industry to the Springfield Area.
- It plans for you** — by the accomplishment of your suggested projects.
- It gives you a chance to share** — in your community responsibility while making it your kind of a community.
- It provides solutions to problems** — by accomplishing your suggested projects, impossible to achieve alone.
- It makes you a member** — of a group of men and women dedicated to progress.

ORGANIZATIONAL CHART



SPRINGFIELD AREA CHAMBER OF COMMERCE

OBJECTIVES 1969

- C**ooperate with other chambers through committees concerned with mutual problems.
- O**ffer all possible assistance and cooperation in development of the downtown core area.
- M**aintain strong support for city government designed to promote planned and orderly growth of government and community.
- M**aintain interest and insure retention of members through active participation in chamber affairs.
- U**ndertake formation of a beautification program.
- N**ame new advisory committee of past presidents to develop long-range goals and programs.
- I**mplement study program of local public agencies' budgets.
- T**ake action on local, state and national legislative issues.
- Y**outh and schools are among the greatest assets of our community. Our pledge is to increase support of our educational program.

SPRINGFIELD AREA CHAMBER OF COMMERCE

OBJECTIVES

1969

Promote Springfield as a good place to live, work and do business.

Recommend and support new and expanded recreation programs.

Offer and obtain 75 new memberships in the Springfield Area Chamber of Commerce.

Growth of our city through the offering of city services to adjacent areas is supported by the chamber.
Encourage expansion of existing businesses and actively seek additional diversified industries.

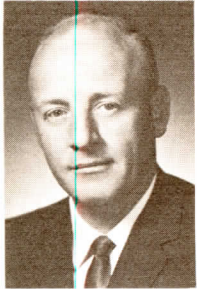
Relate effectively chamber positions on issues to the Springfield area community.

Encourage expansion of our retail trade areas and promote "Shop in Springfield."

Support planning, construction and completion of all road systems offering benefit to our community.

Service to all members through full staff assistance will continue with the same excellence as in past years.

CHAMBER COMMITTEES



INDUSTRIAL COMMITTEE

TOM DENNING

Chairman

Local expansions were the key to industrial development during 1968 . . . they included Kingsford Company, Weyerhaeuser Company, Chembond Corporation, Borden, Inc., Chemical Division and Simpson Timber Company—Extruded Plastics Division. . . . College Plywood Company and Oregon Wood Products were new firms locating here. . . . Underwriters Fire Sprinkler Company will be the second firm to locate in the McKay-Springfield Industrial Park. . . . Global Machinery and Supply Company located in the Southern Pacific Industrial Park. . . . Supported additional industrial zoning for Standard Excelsior and Container Company. . . . Leavitt's Freight constructed a new freight terminal. . . . Maintained contact with several future prospects. . . . Industrial publications were compiled and distributed. . . . Continued the "Industry of the Month" news articles in cooperation with the Springfield News, to promote and publicize local industries. . . . Maintained close liaison with the Oregon Economic Development Division and the Willamette Valley Research Council in attracting new industry to the area. . . . Support was given to a number of industrial zoning requests. . . . Worked toward improving the local industrial climate in a number of related fields—air and water quality control, taxation, U.S. Forest Service policies, zoning, legislation and freight rates. Articles were submitted to "Grow With Oregon," the state's official industrial publication. . . . Submitted testimony to the Legislative Interim Committee on Business Climate. . . . Worked closely with Lane Community College in development of vocational courses requested by local industry. . . . Appointed a representative to the Oregon Inventor's Council at Lane Community College.



NATURAL RESOURCES COMMITTEE

JIM GOSSLER

Chairman

Supported the U.S. Forest Service Multiple Use management of the French Pete area in the Willamette National Forest. . . . Endorsed the establishment of a summer steelhead run in the McKenzie River. . . . Recommended that an additional state park be developed in the metropolitan area. . . . Suggested that the Oregon State Parks Department consider a reservation system in state parks to provide more opportunity for Oregonians to obtain spaces. . . . Continued the working relationship with the Corps of Engineers and the Willamette Valley Task Force in furthering the development of the Willamette Basin Project. . . . Studied the proposed air and water quality

control legislation. . . . Maintained close contact with the Lane Regional Air Pollution Authority. . . . Worked closely with the McKenzie River Chamber of Commerce in the development of the recreational potential of this area. . . . Had representation at the Annual Meeting of the Willamette Basin Project Committee. . . . Continued cooperation with federal agencies—U.S. Forest Service, Bureau of Land Management and Soil Conservation Service in those areas which influence and affect local economy. . . . Supported allocation of funds for research in the field of bark utilization.



RETAIL TRADE ASSOCIATION

WAYNE RIDGWAY

Chairman

The Springfield Retail Trade Association's principal objectives are to encourage local residents to shop at home, to attract customers from other areas, and to have their member firms offer friendly, courteous service and a complete selection of goods and services at reasonable prices. . . . During the second full year of operation, the R.T.A., with funds from their own budget in the amount of \$7,000, sponsored five city-wide retail sales events, financed a monthly advertising program to promote shopping in Springfield and also sponsored the following special activities—Springfield Night At Bethel Park, Kids' Day Parade, amusement rides at the Oregon Broiler Festival,

December free parking program and Christmas activities. Prepared and distributed a retail promotion calendar. . . . Provided a list of emergency telephone numbers of local merchants for the Springfield Police Department. . . . Continued to support an orderly reduction in the state inventory tax. . . . Cooperated with the Springfield Police Department to reduce shoplifting and bad checks. . . . Contributed funds to the Springfield Rose Float Association. . . . Worked

with the Springfield Development Association to improve the downtown area. . . . Cooperated with the City of Springfield in conducting a parking survey. . . . Maintained liaison with the Heart of Springfield Association. . . . Advocated accurate advertising policies and fair competition to protect citizens and business firms from fraudulent sales practices and solicitations. . . . Provided local citizens and business firms with reports from the Better Business Bureau. . . . Encouraged firms to join and support the R.T.A. .

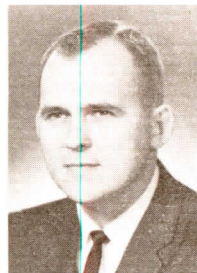


CHRISTMAS ACTIVITIES COMMITTEE

DON LeBEAU

Chairman

Planned and staged the 15th Annual Springfield Christmas Parade which was the largest in its history with 66 units. . . . Prepared and had installed the Christmas street decorations. . . . This entire program was carried out with a \$1,950 budget. The Springfield Police Department estimated that between 25,000 and 30,000 people viewed the parade.



COMMERCIAL DEVELOPMENT COMMITTEE

TEK HAUGEN

Chairman

Contacted numerous financial and lending institutions and real estate departments of major utilities to enlist their support in attracting additional retail and service outlets to Springfield. . . . Worked on specific projects which included a new motel and restaurant development, automobile dealership, franchise restaurant, Oregon Motor Vehicle Department building, National Guard Armory and apartment house development. . . . Contacted several retail chain establishments to discuss the Springfield area as a possible location. . . . Met with members of the Springfield Planning Commission to discuss the activities of this specific Chamber committee and to request zoning for several proposed developments. . . . Continued a program of recognition of new firms locating in Springfield and the expansion and remodeling of existing firms. . . . Encouragement was given toward the beautification of buildings and store fronts. . . . The committee worked closely with the Springfield Development Association.



LEGISLATIVE AND PUBLIC AFFAIRS COMMITTEE

VERN MEYER

Chairman

Continued active interest in legislative and political affairs of national, state, county and local governments. . . . Corresponded with elected officials on specific legislation concerning: inventory tax, property tax relief, air and water quality control, economy in government, sales tax, garnishments, annexation, unemployment compensation, workers' compensation, minimum wage and education. . . . Supported the City of Springfield and Springfield School District budgets. . . . Endorsed and actively supported the City of Springfield's Fire Department Capital Improvement program. . . . Recommended the annexation to the City of Springfield the Reed,

Calef and Larson properties located along Interstate 5—a total of 275 acres. . . . Urged the passage by the voters of the Mapped Streets Act as submitted by the city government. . . . Continued to support a solution to the present confusion in mailing addresses in areas adjacent to Springfield. . . . Sponsored a series of "Meet The Candidates" luncheons. . . . Endorsed the retention of the Lane County Home Rule Charter. . . . Studied proposed federal gun control legislation. . . . Sponsored a "Springfield Suggests To Its Legislators" forum. . . . Worked closely with officials of local government on a number of issues which were important to the continued growth and prosperity of the Springfield and Lane County areas. . . . Opposed the passage of the proposed 1½% Tax Limitation measure and recommended that additional uniform property tax relief be considered by the 1969 Legislature. . . . Kept in close contact with officials of Associated Oregon Industries and Oregon Retail Council concerning proposed legislation. . . . Organized the Springfield delegation that spoke at Governor McCall's Town Hall meeting and made a number of recommendations. . . . Prepared and distributed a directory of elected local, county, state and federal officials and a publication on how to correspond with them. . . . Requested Saturday window service at the local post office. . . . Worked for the establishment of a semi-pro baseball team in Springfield.



EDUCATION COMMITTEE

REV. EARL GIBBS

Chairman

Actively supported the passage of the Springfield School District budget. . . . Strongly recommended an approval by the voters of the Springfield School District bond measure to construct a new Springfield High School and make additions at other educational facilities within the district. . . . Promoted cultural and athletic programs at both Springfield and Thurston High Schools. . . . Continued cooperation and meetings with officials of Lane Community College and the University of Oregon. . . . Supported financially the Junior Achievement Program. . . . Endorsed the passage of state legislation to permit the issuance of general obligation bonds to finance construction

of buildings at state-supported universities, colleges and community colleges. . . . Opposed the passage of the 1½% Tax Limitation measure.



FORUM COMMITTEE

GARY PARRISH

Chairman

Conducted the Chamber's Annual meeting and various forum luncheons throughout the year. . . . Forum presentations included Senatorial candidate Robert Duncan and the pros and cons of the proposed 1½% Tax Limitation measure.



ROADS AND HIGHWAYS COMMITTEE

R. W. McDUFFIE

Chairman

Recommended a list of priorities for Springfield projects included in the Eugene-Springfield Area Transportation Study. . . . Pointed out to local and state officials need for improved highway striping and signing. . . . Discussed the need in the future for a mass transit system in the metropolitan area. . . . Urged improvements for several congested and hazardous intersections in the city. . . . Held joint meetings with other Chambers of Commerce concerning projects of mutual interest and concern which included: Blue River section of the McKenzie River Highway, South Fork Road between U.S. 126 and Waldo Lake Highway, widening of Highway 58, extension of

Interstate 105 to Route F, Washington-Jefferson Street Bridge, widening of Belt Line Road, 30th Avenue Overhead and Interstate 5, improvement of sections of Route F. . . . Conducted studies and made recommendations concerning various local street and highway projects—lighting of Mohawk Overpass, Jasper Road, Laura and Interstate 105 connector, pedestrian crossing of 2nd and 3rd Street couplet at Centennial Boulevard, widening of 5th Street, extension of Centennial Boulevard, extension of 2nd and 3rd Street couplet, extension of 30th Avenue, N Street and High Banks Road connector, improvement of 3rd Street between Main and South A Streets, improvement of core area traffic pattern, additional signalization, Belt Line Road and Harlow Road connector and opening of a number of dead end streets. . . . Heard the annual report of the City Engineer concerning construction projects undertaken and completed during 1967 and plans for 1968. . . . Met with state highway officials to receive information concerning state and federal financing of highway projects. . . . During the past year, several projects were completed or under construction which had been supported by the Chamber—Waldo Lake Road and Hayden Bridge. . . . Studied several proposed highway and street beautification projects.



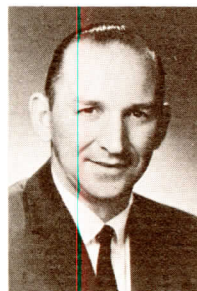
PUBLICITY AND ADVERTISING COMMITTEE

CARL NEWCOMB

Chairman

Maintained and financed the large Springfield-McKenzie River area tourist promotion sign on Interstate 5. . . . Published and distributed the Springfield-Eugene city map. . . . Distributed the Springfield color and statistical folders. . . . Had new brochure racks constructed and placed in additional business establishments. . . . Distributed the Springfield decal. . . . Provided service and information to visitors. . . . Continued close cooperation with the Oregon Travel Information Division, Pacific Northwest Travel Association and Oregon Welcome to increase tourism in Oregon and Lane County. . . . Started planning for the publication of a revised Springfield color folder.

. . . Provided news releases concerning Springfield for national, regional, state and local publications. . . . Instituted the development of a library of photographs of Springfield and Lane County scenes. . . . Provided service to several organizations which held conventions in our area. . . . Cooperated with the McKenzie River Chamber of Commerce in promoting tourism in the area and the McKenzie River Guides Association in staging the annual McKenzie River White Water Boat Parade. . . . Updated the Springfield Visitors Map. . . . Had additional state visitor information signs erected in the area. . . . Prepared and distributed to all members the Chamber's 1967 Annual Report.



MEMBERSHIP COMMITTEE

KEN WRIGHT

Chairman

Added 90 new firms and individuals to the Chamber's membership roll. . . . Increased the Chamber budget by \$3,770.00. . . . Conducted two half-day membership drives. . . . Collected a number of delinquent accounts.



GREETERS COMMITTEE

GIL JOHNSTON

Chairman

Welcomed new business and industrial firms and their staffs as well as new employees in existing firms to the Springfield area at informal breakfast sessions held throughout the year. . . . Adopted an official Greeter's blazer and emblem which are worn at all official Chamber functions and visitations. . . . Represented the Chamber at the dedication of the new Roseburg Chamber of Commerce office. . . . Arranged a salute to all newcomers to the city over Radio KPNW.

SPECIAL COMMITTEES

BUDGET COMMITTEE

Leonard Wildish, Chairman

Prepared the budget for 1968 with a projected income of \$30,177.00. . . . Membership investment was increased by \$5,053.84 above 1967 amount. . . . Since 1957, income has increased from \$10,502.00 to \$32,774.60 at the end of 1968. In 1968 total income increased 19%

NOMINATIONS & ELECTIONS COMMITTEE

Chuck Richey, Chairman

Nominated candidates for positions on the Chamber's Board of Directors and conducted elections.

CONSTITUTION AND BYLAWS REVISION COMMITTEE

Henry Camarot, Chairman

Reviewed and made recommendations for amend-

ments to the Constitution and Bylaws which were approved by a vote of the membership.

ANNUAL AWARDS BANQUET COMMITTEE

Ken Wright, Chamber Representative

Planned and staged in cooperation with other sponsoring organizations, the Springfield Annual Citizens' Awards Banquet.

SILKE FIELD GRANDSTAND COVER COMMITTEE

Marty Edberg, Chamber Representative

Instituted a program, in cooperation with the Thurston and Springfield High School Boosters, to raise finances and acquire materials to cover the Silke Field Grandstand.

SPECIAL CHAMBER AFFILIATIONS

LANE COUNTY CHAMBER OF COMMERCE

Jim Larson, Executive Delegate

Actively participated in the Lane County Chamber of Commerce as a means of promoting the economy of all Lane County, especially in the fields of tourism, recreation, natural resources, legislation, transportation and publicity and advertising.

SPRINGFIELD ROSE FLOAT ASSOCIATION

Carl Newcomb, Chamber Representative

Supported and cooperated in the planning, construction, fund raising and entering of a Springfield float in the Grand Floral Parade of the Portland Rose Festival. Don LeBeau, Association President, did outstanding work in obtaining for the fourth year in succession a major award for Springfield's float entry.

WILLAMETTE VALLEY RESEARCH COUNCIL

Jack Criswell, John Hine and Dick O'Neil, Chamber Representatives

Devoted to promoting Lane, Benton and Linn Counties as the ideal location for research and research oriented industries.

SPRINGFIELD MAYOR'S COORDINATING COUNCIL

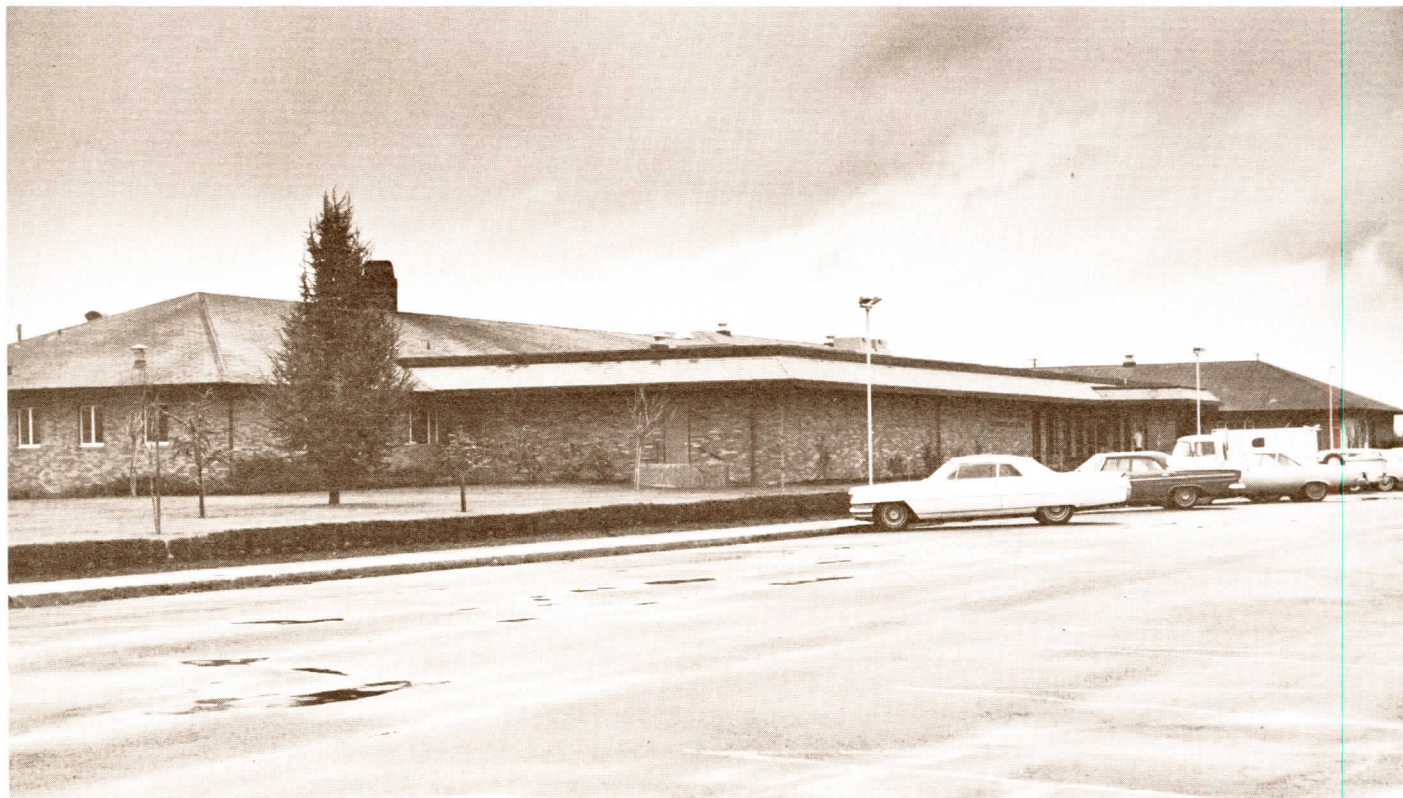
Marty Edberg, Executive Representative

Met on a monthly schedule with representatives of various divisions of local government to discuss mutual problems and to disseminate information to further the growth and progress of our community and area.

SPRINGFIELD DEVELOPMENT ASSOCIATION

Marty Edberg, Executive Representative

Maintained liaison and cooperation to further the planning development and improvement of the community's core area.



McKenzie-Willamette Memorial Hospital serves Springfield and outlying areas with emergency, medical and surgical services. A master plan has been designed to keep pace with growth in the community.

YOUR CHAMBER INVESTMENT PROVIDES YOU WITH . . .

Direct representation with many organizations and agencies including:

United States Chamber of Commerce
Council of Western Retail Associations
Pacific Northwest Travel Association
Portland Better Business Bureau
Oregon Corporation Department
 Division of Economic Development
Associated Oregon Industries
 Oregon Retail Council
U.S. Department of Commerce
U.S. Corps of Engineers

Oregon State Highway Department
Willamette Basin Project Committee
U.S. Forest Service
U.S. Department of Transportation
Oregon Travel Information Division
State Parks Department
State, County and local
 Government Offices
Congressmen and State Legislators

SERVICES OF YOUR CHAMBER OF COMMERCE

Here are just a few of the services you may obtain from your Chamber just for the asking:

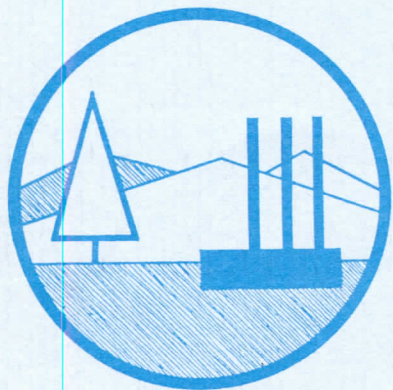
TOURIST & TRAVEL INFORMATION
STATISTICAL DATA
CITY DIRECTORY LIBRARY
OREGON MANUFACTURERS DIRECTORY
CHURCH & ORGANIZATIONAL LISTS
TELEPHONE DIRECTORIES LIBRARY
BETTER BUSINESS BUREAU REPORTS
STATE, COUNTY & CITY MAPS
AERIAL PHOTOGRAPHS
LEGISLATIVE INFORMATION
FOREST SERVICE MAPS
ZONING INFORMATION
MEDICAL FACILITIES
INDUSTRIAL SITE MAPS
INDUSTRIAL SURVEY
HIGHWAY CONDITIONS INFORMATION
CENSUS DATA

LISTS OF GOVERNMENTAL OFFICIALS
TRANSPORTATION DATA
NATIONAL ZIP CODE DIRECTORY
EDUCATIONAL FACILITIES
APARTMENT & KINDERGARTEN LISTS
RECREATIONAL MATERIAL
LIST OF COMMUNITY EVENTS
MILEAGE CHART
HUNTING & FISHING INFORMATION
CLIMATOLOGICAL DATA
NATIONAL MOTEL & HOTEL INFORMATION
U.S. CHAMBER REPORTS
SPRINGFIELD HISTORICAL DATA
CANADIAN TRAVEL INFORMATION
RURAL ROUTE MAPS
SMALL BUSINESS ADMINISTRATION DATA

In addition, your Chamber staff is prepared to provide you with any additional information you may request.

**SPRINGFIELD AREA
CHAMBER OF COMMERCE
P.O. Box 155
Springfield, Oregon 97477**

**BULK RATE
U.S. Postage
PAID
Springfield, Oregon
Permit No. 39**



Serving In Your Interest