

SOUTH BERKELEY REVITALIZATION EXCHANGE

A LINK BETWEEN THE
SOUTH BERKELEY COMMUNITY AND THE CITY



VOL. 1, NO. 4

NOVEMBER 1986

Conference to Launch Neighborhood Development Corp.

The South Berkeley Continuation Committee for economic revitalization invites residents of South Berkeley to attend a conference and become members in the establishment of a non-profit Neighborhood Development Corporation (NDC). The conference, is Saturday, December 6, 1986, at the South Berkeley Senior Center (Ellis at Ashby), 9 a.m. to 1 p.m.

The conference date is exactly one year after a similar community meeting was held, with over 300 persons attending, concerned with economic improvements and human service needs for South Berkeley.

During the meeting a year ago residents pointed out areas for community improvement and development, identified eyesores and suggested ways for their removal, underscored the need to concentrate on youth problems, and concluded that neighborhood organization is a first step in combating drug abuse and crime. The meeting also covered business and commercial area needs, and discussed a variety of housing problems.

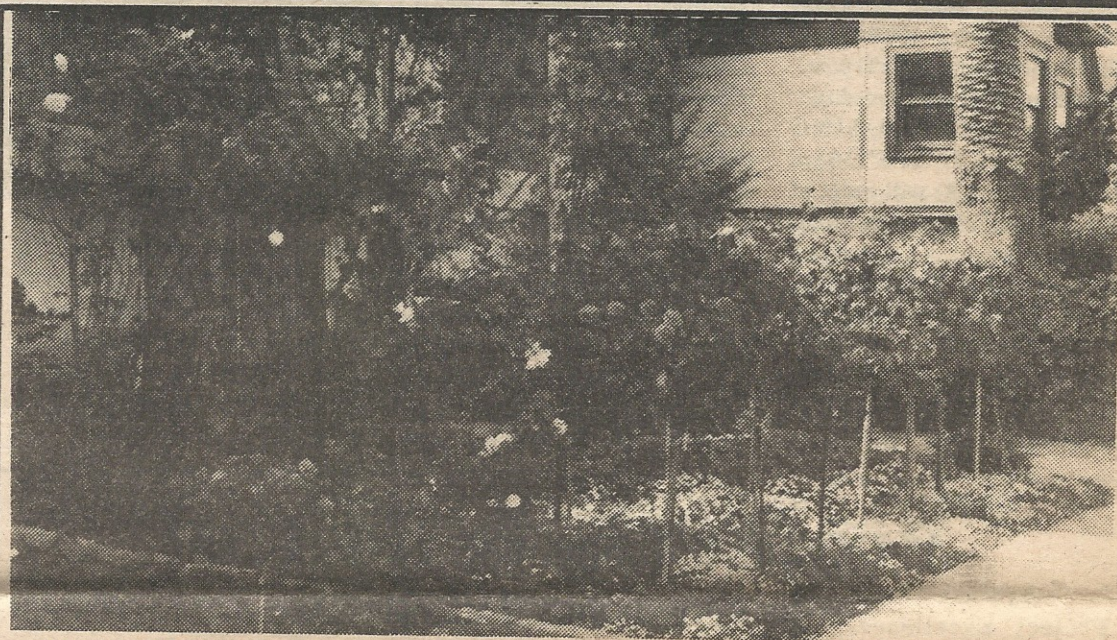
The December 7, 1985 meeting ended by recommending the establishment of a community organization that would involve and benefit the community through the sponsorship of economic development projects and the delivery of needed community services. For the past 10 months the "Call to Action" of the December 7, 1985 meeting has been taken on by

a group of South Berkeley volunteers-The Continuation Committee for Economic Revitalization. The committee has identified priority action areas, and will recommend to the December 6th conference steps to officially establish a South Berkeley NDC to pursue these goals.

The conference is not just another meeting. At the conference the Continuation Committee will recommend that: 1) ten South Berkeley residents be elected on December 6th to the board of the NDC and serve a two year term; 2) ten Continuation Committee members serve on the NDC board and serve a one year term; 3) the NDC board appoint five South Berkeley organizational representatives to the board; 4) membership in the NDC is for South Berkeley residents, who must always represent a majority of board members; and 5) an annual membership fee of \$1 be established. The NDC Board of Directors will have its first meeting after the conference adjourns December 6, 1986.

The conference is well organized and will include informational workshops in such areas as: employment, housing, youth issues, crime prevention and commercial revitalization.

Mark your calendars now for Saturday, December 6, 1986, 9 a.m. to 1 p.m. Look for further conference details in the December 1st issue of *The Exchange* or call Joe Brooks, City of Berkeley, Office of Economic Development, 644-6309.



Ruby Lee Mays deserves community recognition for her beautiful flower garden, which is enjoyed by all in her neighborhood, at her Harmon Street residence.

Residents Respond To Household Survey - Community Needs Identified For Action

The results are in! The results of the South Berkeley household survey, conducted by youth participating in the South Berkeley Summer Youth Project, have been compiled. This survey, along with the recently completed survey of South Berkeley merchants conducted by the Office of Economic Development (OED), will allow the City and the community's Continuation Committee for South Berkeley Revitalization to better respond to community concerns and needs.

During July and August, 1986, South Berkeley Summer Youth Project participants stopped at every household in South Berkeley to survey residents about a variety of issues. The survey was an important element in the overall effort by South Berkeley youth and OED to encourage positive change in the community. The survey,

which was conducted on weekdays, weeknights, and weekends by 14 South Berkeley youth, asked 37 questions about such issues as housing needs, shopping patterns, employment concerns, City service performance, education, and community problems. There were 379 respondents to this survey.

Sixty one percent of those completing the survey have lived in Berkeley for more than 10 years, reflecting the stability of a large part of the South Berkeley community. The following list summarizes answers to several of the 37 questions on the survey:

* Garbage pick-up was the highest rated City service, and street cleaning the lowest rated.

* Grocery shopping is done at Safeway or Co-Op by over 66 percent of those respon-

ding, while over 50 percent of respondents shop for clothing outside of Berkeley.

* Drugs is considered by respondents to be the biggest problem in South Berkeley, in the immediate neighborhoods of the respondents, and among youth.

* Over 50 percent of respondents would support additional low income housing in their neighborhood.

* Individuals in 25 percent of households surveyed shop at the Ashby BART flea market at least twice a month, while 40 percent of households never shop at the flea market.

If you would like a copy of the responses to all questions in the survey, please contact the City of Berkeley Office of Economic Development (644-6309) for a free copy of the results.