

K
♥



SAN FRANCISCO STATE
vs.
LA VERNE COLLEGE

FRIDAY EVENING, NOVEMBER 9, 1951
COX STADIUM — Kickoff 8:00 P.M.

Price 25c



♥
K

**Be Happy -
Go Lucky!**

EILEEN WILSON, Lucky Star of TV and Radio, says:
**At football games I love to cheer
"Go team!" and "Hip Hooray!"
But for a better taste I shout,
"Go Lucky Strike today!"**
(Luckies taste better than any other cigarette!)



**LUCKIES TASTE BETTER
THAN ANY OTHER CIGARETTE!**

**L.S./M.F.T.-
Lucky Strike Means Fine Tobacco**

COPR., THE AMERICAN TOBACCO COMPANY

SAN FRANCISCO STATE COLLEGE

vs.

LA VERNE COLLEGE

FRIDAY EVENING, NOVEMBER 9, 1951

COX STADIUM

Kickoff at 8:00 P.M.

TONIGHT'S GAME

It might be wise to get seated early tonight for the LaVerne Leopards enjoy a reputation this season for scoring in the first five minutes of play. In their first six games this season they managed to cross the goal line inside of that short period and they might again tonight.

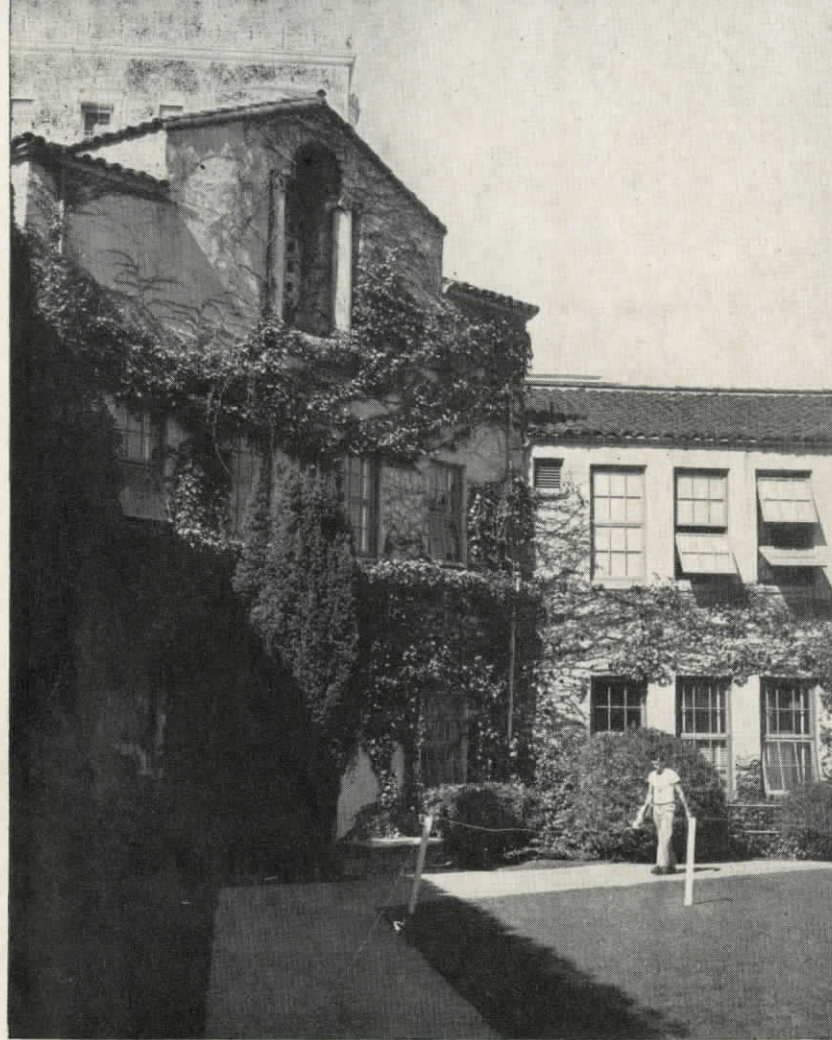
The Leopards play from an unbalanced line with the backs in "T" formation. They should have the most varied offense to appear in Cox Stadium in many years. They have an excellent passing and running attack.

Daryl Brandt, the Leopard's veteran quarterback, is an excellent passer and a speedy runner. He finds three good targets for his aerals in ends Don Hollingsworth and Dick Hepner and halfback Jack Landis. Besides Brandt, the backfield will be composed of two speedy runners in Don Hobson and Jack Landis and a powerful fullback in Ed Belcher.

Both schools have a record of five wins and two losses. Last week LaVerne received their second defeat from the Los Angeles State Devils by a score of 19 to 14. Early in the season the Gators defeated the Devils 37-13. The two game scores are not too revealing, when it is noted that the Gators met L.A. State when the southerners were new to collegiate ranks. They have probably improved greatly since over a month ago.

The Gators will use the standard "T" with Sam DeVito guiding the offense from the quarterback spot. With him will be speedster Marv Crews and driving runners John O'Shea and John Fortson.

Co-captains for the Gators tonight will be linebacker Larry Solari and quarterback Maurice Duncan.



Looking across the lawn toward Anderson Hall on the State New Campus. Anderson Hall houses most of the Science Department of the College.

REMAINING GAMES

SAN FRANCISCO STATE COLLEGE

November 16	Cal Aggies	Home
November 24	Fresno State	Fresno

*This program is published by the
Associated Students of San Francisco State College*

President — DR. J. PAUL LEONARD

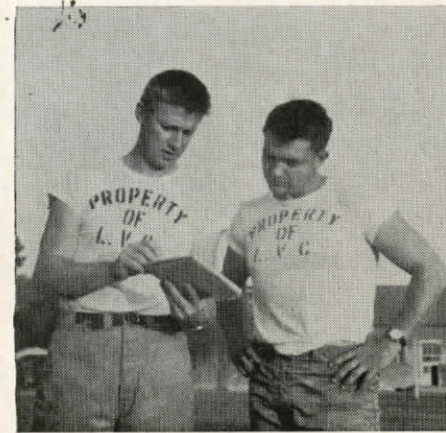
Head of the Physical Education Dept. — DAVID J. COX

Director of Athletics — JOSEPH J. VERDUCCI

President of the Associated Students — DON JOHNSON

San Francisco State is a co-educational college with an enrollment of over 5,000. All State's home games are played at Cox Stadium which was named after Dean David J. Cox, head of the physical education department at State. All games begin at 8 p.m.

*Represented for National Advertising by
DON SPENCER COMPANY, INC., 271 Madison Ave., N.Y.*



THE COACHES

Head football coach Roland Ortmyer, better known to everyone as "Ort" and line coach Dwight Hanawalt, director of athletics, are now in their fourth season as mentors of the La Verne College football team.

La Verne Leopards



LINE—Vernon Duerksen, Bill Bogroff, Glen Hardcastle, Roy Belcher, Myrl Rupel, Larry Teter.
BACKFIELD—Fred Holmes, Bill Landis, Daryl Brandt, Don Bendoski.



OFFENSIVE UNIT

Backfield — Bill Landis, Burton Lisky, Don Hodson, Daryl Brandt

Line — Dick Hepner, Ernest Myers, Thurman Belcher, Larry Teter, Myrl Rupel, Bill Bogroff, Don Bendoski.



DEFENSIVE UNIT

Backfield — Mel Baughman, Don Hodson, Eddie Soto, Herman Belcher, Daryl Brandt.

Line — Bob Maffey, Ernest Myers, Don Boots, Dorton Steinberger, Bob O'Neill, Dick Hepner.



Outstanding Leopard Lineman
DICK HEPNER

La Verne Leopards

PROBABLE STARTING LINEUP

LE Hollingsworth 27	LT Myers 37	C Rupel 1	LG Teter 22	RG Steinberger 13	RT Gonzales 19	RE Hepner 35
	QB Brandt 10					
		LH Hodson 41		FB H. Belcher 20		RH Landis 31

NO.	NAME	POS.	AGE	WT.	HT.	EXP.
8	Adams, Harold	FB	19	160	5.10	1
7	Baughman, Mel	HB	21	160	5.9	3
40	Belcher, Herman	FB	20	190	5.9	2
12	Belcher, Roy	G	24	180	5.10	4
23	Belcher, Thurman	G	20	185	5.9	4
29	Bendoski, Don	E	22	180	6.2	3
21	Bogroff, Bill	G	21	170	5.7	4
34	Boots, Don	C	18	190	5.9	1
10	Brandt, Daryl (Co-Capt.)	E	21	155	5.10	4
5	Brooks, Stanley	QB	17	135	5.8	1
28	Cayford, Elvis	T	19	170	6.2	2
24	Clet, Fabio	FB	24	165	5.10	2
9	Cooney, Dean	HB	19	170	5.9	1
44	Duerksen, Ronald	HB	26	220	6.1	4
26	Everhart, William	E	21	170	6.1	3
11	Ferraro, Ronald	HB	24	165	5.9	4
19	Gonzales, Ruben	G	20	175	5.9	3
6	Graybill, Bill	HB	18	140	5.10	1
43	Hardcastle, Glenn	T	25	205	6.0	4
42	Heisel, William	T	21	210	5.11	1
35	Hepner, Dick	E	20	185	5.11	3
41	Hodson, Don	FB	22	195	5.11	3
2	Holland, Larry	C	19	160	5.8	2
27	Hollingsworth, Fred	E	21	170	5.11	3
17	Holmes, Fred	HB	21	160	5.8	4
31	Landis, Bill	HB	20	175	6.0	4
25	Liskey, Burton	FB	19	175	5.11	2
15	Maffey, Bob	E	21	175	6.1	3
4	Matthews, Wallace	E	25	148	5.11	3
3	Montes, Ismael	E	18	135	5.10	1
37	Myers, Ernest	T	27	210	5.11	3
39	O'Neill, Bob	E	18	204	6.2	2
1	Rupel, Myrl	C	22	155	5.11	4
20	Soto, Eddie	QB	20	160	5.8	2
13	Steinberger, Dorton	G	25	160	5.6	3
16	Stewart, Gregory	HB	18	160	5.11	2
22	Teter, Larry (Co-Capt.)	G	21	180	5.10	4
18	Wilkinson, Paul	T	18	170	6.2	2

Head Coach—Roland Ortmyer

Line Coach—Dwight Hanawalt

LA VERNE LEOPARDS

NO.	NAME	POS.
1	Rupel, Myrl	C
2	Holland, Larry	C
3	Montes, Ismael	E
4	Matthews, Wallace	E
5	Brooks, Stanley	QB
6	Graybill, Bill	HB
7	Baughman, Mel	HB
8	Adams, Harold	FB
9	Cooney, Dean	HB
10	Brandt, Daryl (Co-Capt.)	E
11	Ferraro, Ronald	HB
12	Belcher, Roy	G
13	Steinberger, Dorton	G
15	Maffey, Bob	E
16	Stewart, Gregory	HB
17	Holmes, Fred	HB
18	Wilkinson, Paul	T
19	Gonzales, Ruben	G
20	Soto, Eddie	QB
21	Bogroff, Bill	G
22	Teter, Larry (Co-Capt.)	G
23	Belcher, Thurman	G
24	Clet, Fabio	FB
25	Liskey, Burton	FB
26	Everhart, William	E
27	Hollingsworth, Fred	E
28	Cayford, Elvis	T
29	Bendoski, Don	E
31	Landis, Bill	HB
34	Boots, Don	C
35	Hepner, Dick	E
37	Myers, Ernest	T
39	O'Neill, Bob	E
40	Belcher, Herman	FB
41	Hodson, Don	FB
42	Heisel, William	T
43	Hardcastle, Glenn	T
44	Duerksen, Ronald	HB

SCIENCE
DISCOVERED IT
YOU CAN
PROVE IT-



SAN FRANCISCO STATE

No.	Name	Pos.
11	DeVito, Sam	Q
12	Duncan, Maurie	Q
14	Storm, Dick	Q
20	Crews, Marv	H
21	McKee, Jewell	H
23	Caruso, Jack	H
24	Coats, Ed.	F
25	Boyd, Dick	E
30	O'Shea, John	H
33	Fortson, John	F
35	Endriss, Al.	H
41	Crowley, Jerry	H
42	Bremond, Harry	F
51	Amandoli, Dick	C
52	Costa, Manuel	C
54	Solari, Larry	C
60	Jones, Jess	G
62	Slates, Don	G
63	Zerkovich, George	G
65	Clare, Don	G
66	Ginanni, Frank	G
67	Wonderling, Larry	H
70	Williamson, Bob	T
71	McBride, Jack	T
72	Pritchard, Bill	T
73	Bush, Jim	F
74	Andersen, Gene	T
75	O'Leary, Pat	F
76	Rau, Paul	T
77	Cranshaw, Walt	F
78	Roark, Phil	T
80	DeMilte, Augie	G
81	Barone, Peter	E
82	Kellett, Ed.	E
83	Gallegos, Elmer	E
84	Truscelli, John	E
85	Payne, Dick	E
86	Gordon, Gene	G
87	Baker, Wes	E
88	Gold, Don	E
89	Chabot, Don	E

"NO UNPLEASANT
AFTER-TASTE"

WHEN YOU SMOKE
CHESTERFIELD

MORE COLLEGE MEN AND WOMEN BUY
CHESTERFIELD THAN ANY OTHER CIGARETTE

San Francisco State

STARTING LINEUP

LE Gallegos 83 LT Andersen 74 LG Zerkovich 63 C Amandoli 51 RG Clare 65 RT Williamson 70 RE Payne 85

QB DeVito 11

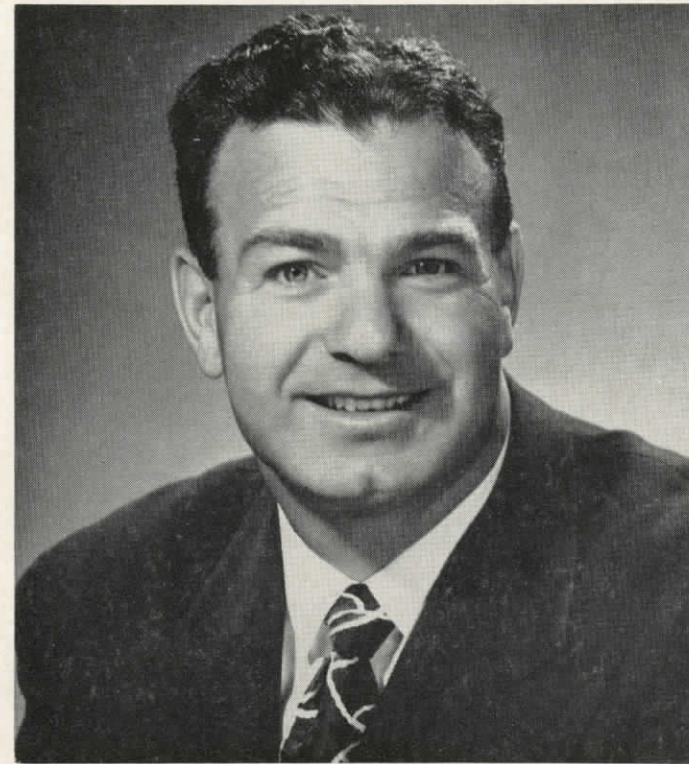
LH Crews 20

RH O'Shea 34

FB Coats 34

No.	Name	Pos.	Age	Ht.	Wt.	Year
51	Amandoli, Dick	C	20	6.0	190	3
74	Andersen, Gene	T	21	5.11 1/2	210	3
87	Baker, Wes	E	23	5.9	183	1
81	Barone, Peter	E	17	5.10	170	1
25	Boyd, Dick	E	22	6.0	170	3
42	Bremond, Harry	F	16	5.5	155	1
73	Bush, Jim	F	24	6.0	190	1
23	Caruso, Jack	H	23	5.7	155	4
89	Chabot, Don	E	21	6.1	195	4
65	Clare, Don	G	22	5.10	190	2
24	Coats, Ed.	F	19	6.0	200	2
52	Costa, Manuel	C	19	5.10	180	1
77	Cranshaw, Walt	F	21	5.10	195	1
20	Crews, Marv	H	20	5.6	150	3
41	Crowley, Jerry	H	18	5.10 1/2	160	1
80	DeMilte, Augie	G	18	5.9	175	1
11	DeVito, Sam	Q	22	5.8	170	4
12	Duncan, Maurie	Q	20	6.1	184	2
35	Endriss, Al.	H	22	6.2	195	3
33	Fortson, John	F	21	5.10	180	2
83	Gallegos, Elmer	E	22	5.9	167	4
66	Ginanni, Frank	G	19	6.0	200	1
88	Gold, Don	E	18	6.0	201	2
86	Gordon, Gene	G	21	5.11	185	3
60	Jones, Jess	G	18	5.9	185	1
82	Kellett, Ed.	E	24	5.10	167	1
71	McBride, Jack	T	19	6.3	230	1
21	McKee, Jewell	H	18	5.9	155	1
75	O'Leary, Pat	F	18	6.1	190	1
30	O'Shea, John	H	20	6.0	175	3
85	Payne, Dick	E	22	5.11	165	4
72	Pritchard, Bill	T	20	6.2	217	1
76	Rau, Paul	T	17	6.2	225	1
78	Roark, Phil	T	18	6.2	250	1
62	Slates, Don	G	20	5.9	185	3
54	Solari, Larry	C	20	6.0	193	3
14	Storm, Dick	Q	18	5.10	170	1
84	Truscetti, John	E	24	5.10	160	3
70	Williamson, Bob	T	22	6.2	230	4
67	Wonderling, Larry	H	21	6.2	195	2
63	Zerkovich, George	G	20	5.9	198	3

Co-Captains for State—Cranshaw and Slates.



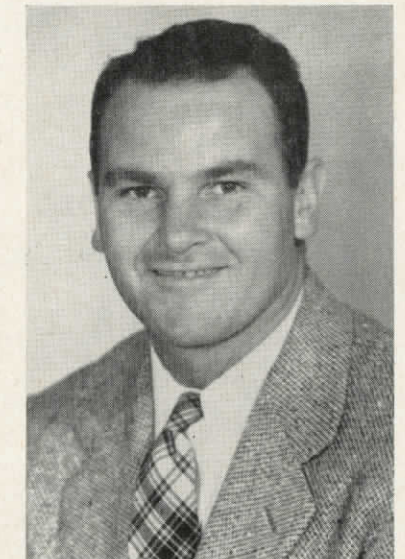
Coach Joe Verducci is in his second year as head coach of the Golden Gators. In the 14 games he has coached Gator teams they have won ten and lost four.

Verducci came to State from St. Mary's where he was head coach for two years. In 1948 he was named Northern California coach of the year.



Bill Harkness is the end coach for San Francisco State. A State alumni he won letters in football and track while at State.

Harkness has been on the State staff since 1947 serving first as junior varsity football coach and since 1949 as assistant varsity coach.



Line coach Bob Troppman graduated from State in 1947. After two years as assistant football coach at Richmond High School he returned to State this Fall as a faculty member.

Troppman played football for the University of Redlands, while being trained by the United States Marine Corps in World War II.



86. Gordon, G



51. Amandoli, C



70. Williamson, T



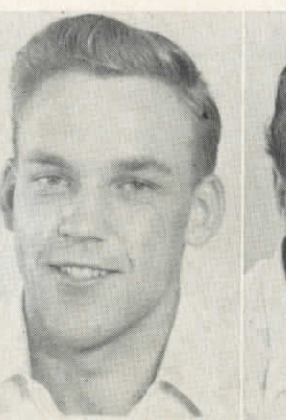
11. DeVito, B



74. Andersen, T



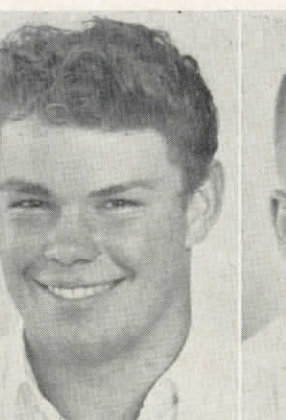
63. Zerkovich, G



62. Slates, G



60. Jones, G



76. Rau, T



55. Solari, C



30. O'Shea, B



23. Caruso, B

San Francisco

State College

Golden

Gators



89. Chabot, E



41. Crowley, B



83. Gallegos, E



85. Payne, E



33. Fortson, B



67. Wonderling, B



35. Endriss, B



12. Duncan, B



20. Crews, H



71. McBride, T



78. Roark, T



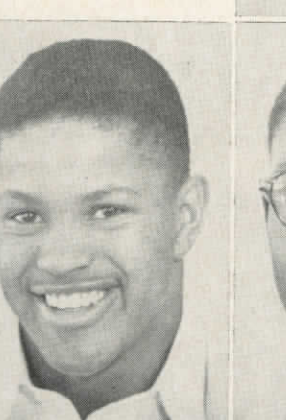
34. Coats, B



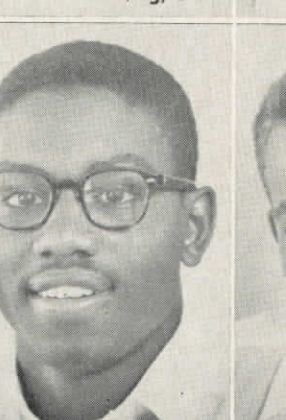
32. Fiammengo, B



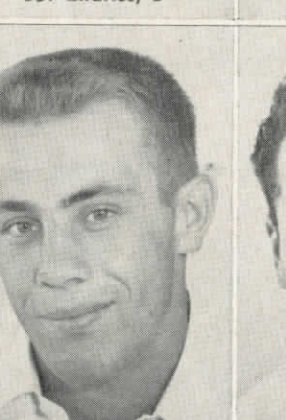
65. Clare, G



42. Bremond, B



21. McKee, B



14. Storm, B



77. Cranshaw, B

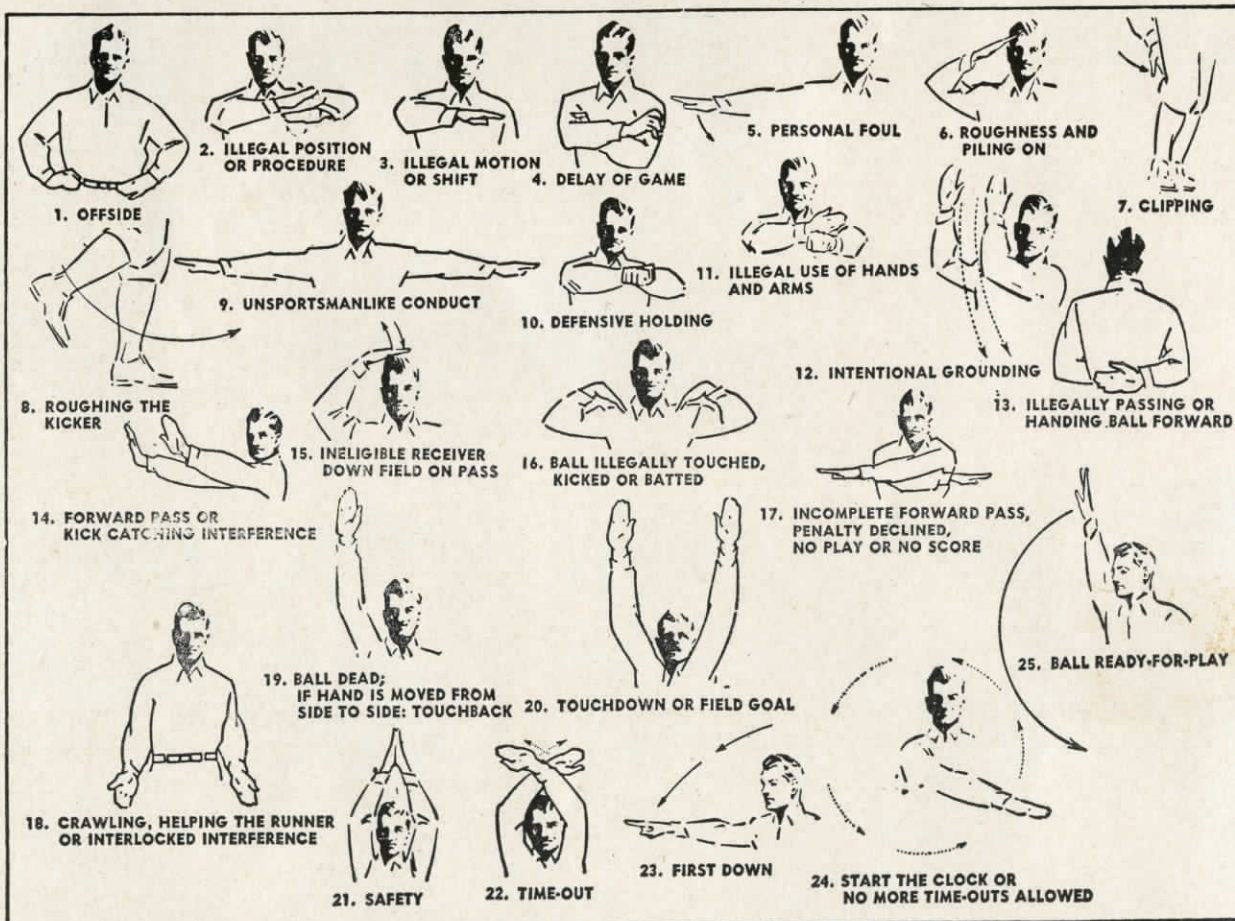
OFFICIAL WATCH FOR THIS GAME

Longines
The World's Most Honored Watch

ACCEPTED AS OFFICIAL WATCH
FOR TIMING
CHAMPIONSHIP SPORTS EVENTS
IN ALL FIELDS ALL OVER THE WORLD



Product of
Longines-Wittnauer Watch Company



"We know the score—
we're watching



Emerson Owners —
LILI PALMER and REX HARRISON
stage and screen stars

Emerson LIFE-TESTED TV!

**17-INCH GIANT-
PICTURE TELEVISION**

Built-in antenna. Full Screen Focus for pictures sharp and clear edge-to-edge. Super-powered long-distance circuit. Fidelity-tone audio circuit. Graceful mahogany veneer cabinet.



EMERSON MODEL 696

**20-INCH LIFE-SIZE
TELEVISION**

Black Magic contrast permits stronger, sharper pictures even in fully lighted rooms. Super-powered, long-distance circuit. Built-in antenna. Mahogany veneer cabinet ensemble with matching revolving-top table.



MODEL 697

LIFE-TESTED FOR BETTER PERFORMANCE... LONGER LIFE!

**20-INCH LIFE-SIZE
TELEVISION**

Super-powered, long distance circuit performs where others fail. Built-in antenna. One-knob *Simplimatic* tuning. Selected mahogany veneer console cabinet with matching doors.



EMERSON MODEL 693

**17-INCH GIANT-
PICTURE TELEVISION**

Super-powered long-distance circuit. Built-in antenna. One-knob *Simplimatic* tuning. 3-speed automatic record changer. Mahogany veneer console cabinet with tilt-out phonograph compartment.



EMERSON MODEL 699

Every 5 seconds someone buys an Emerson — America's Best Buy!

Better Vision • Style • Tone • Performance • Value

SEE YOUR NEIGHBORHOOD EMERSON DEALER



America's most
popular cigarette



FLAVOR

MILDNESS





"R"

CLUB

presents

UNIVERSITY OF REDLANDS

FIFTH ANNUAL

BASKETBALL

TOURNAMENT

25c.