

the **FOR REFER**

27858 *cup*

1933

NOT TO BE TAKEN FROM THIS ROOM



LA VERNE
COLLEGE
LIBRARY

193
2

COPYRIGHT

1 9 3 3

THE ASSOCIATED STUDENTS
of

LA VERNE COLLEGE

GRACE WARD

Editor

HAROLD HYLTON

Manager



THE LAMBDA

of

1933

p u b l i s h e d b y

The Associated Students

of

LA VERNE COLLEGE

193

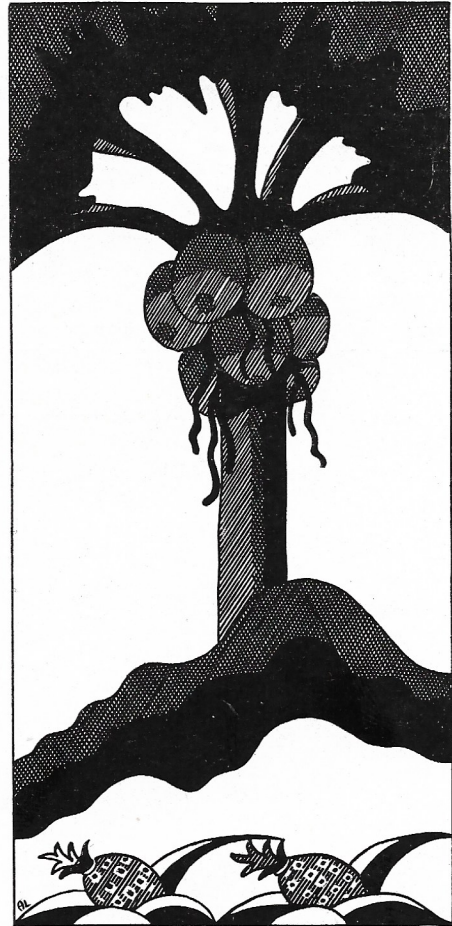


INSPIRATION

FROM THE UNDERLYING SIGNIFICANCE OF THE SYSTEM OF EXCHANGING STUDENTS WITH THE UNIVERSITY OF HAWAII, WHICH HAS BEEN INAUGURATED ON THE LA VERNE CAMPUS THIS YEAR—THE IDEAL OF INTERNATIONAL BROTHERHOOD, PEACE, AND GOODWILL HAS EVOLVED THE THEME OF THIS VOLUME.

DEDICATION

TO THAT UNIVERSAL BOND WHICH
MAKES ALL MEN BROTHERS—TO THE
SPIRIT OF FREEDOM AND FRIENDSHIP
WHICH IS SO CHARACTERISTIC OF COS-
MOPOLITAN HAWAII—AND IN PAR-
TICULAR TO THE MEMORY OF DR.
JESSE B. EMMERT WHO SO FORCE-
FULLY INCULCATED THESE SUPREME
IDEALS IN HIS WORK ABROAD AND ON
OUR CAMPUS—THIS VOLUME IS RE-
SPECTFULLY DEDICATED.



CANCE
G STU-
TY OF
NAUG-
AMPUS
TERNA-
E, AND
THEME



FOREWORD

THE LAMBDA OF 1933 HAS EVOLVED DURING A PERIOD OF UNCERTAINTY TO A RECORD OF THE YEAR'S EVENTS. IT IS HOPED IT WILL BE RECEIVED NOT TOO CRITICALLY AND WITH A SYMPATHETIC UNDERSTANDING OF THE DIFFICULTIES OF ITS PRODUCTION. IT HAS HAD BUT ONE PURPOSE—TO PERPETUATE FOR THE STUDENTS OF LA VERNE COLLEGE AS COMPLETELY AS POSSIBLE EVERY PHASE OF ACTIVITY REPRESENTED ON THE CAMPUS.

IN MEMORIAM

A L U M N I

FLORENCE LANDIS GLICK

F A C U L T Y

DR. JESSE B. EMMERT

R D

VOLVED
TAINTY
EVENTS.
ED NOT
A SYM-
F THE
ON. IT
O PER-
OF LA
ELY AS
CTIVITY
S.

193

CONTENTS

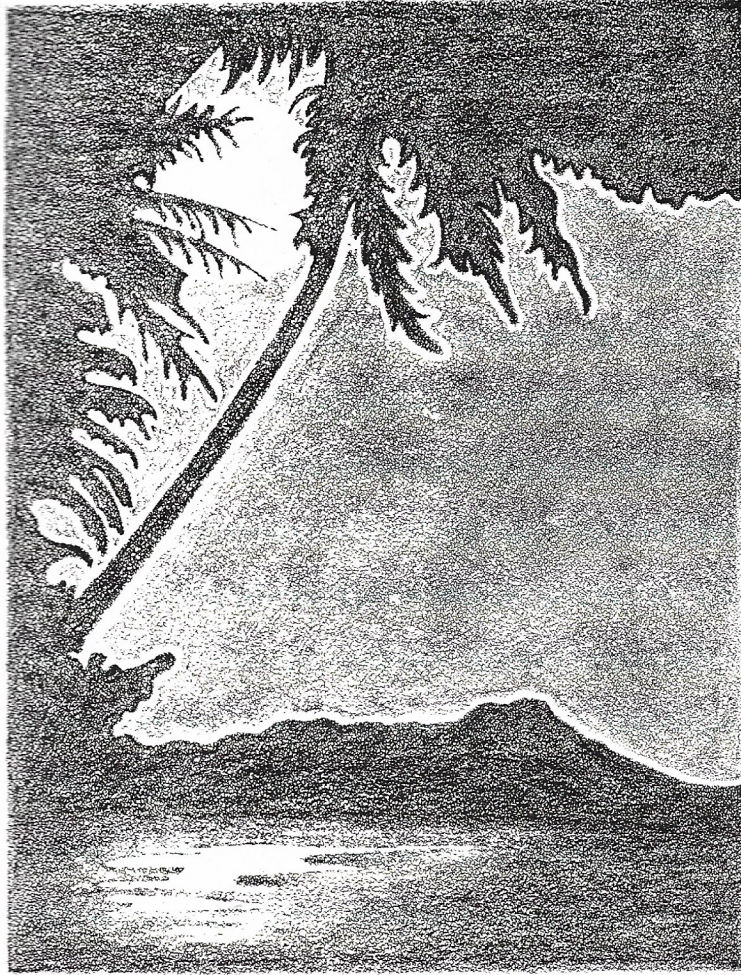
BOOK I.
ADMINISTRATION

BOOK II.
C L A S S E S

BOOK III.
ACTIVITIES

BOOK IV.
ATHLETICS

ADMINISTRATION



ON

—

—

"On the seventh day out we saw a dim, vast bulk standing up out of the wastes of the Pacific and knew that spectral promontory was Diamond Head, a piece of this world which I had not seen before for twenty-nine years. So we were nearing Honolulu, the capital city of the Sandwich Islands—those islands which to me were Paradise; a Paradise which I had been longing all those years to see again. Not any other thing in the world could have stirred me as the sight of that great rock did."

Mark Twain, in "Following the Equator"

A D M I N I S T R A T I O N



ELLIS M. STUDEBAKER
President of the College

The President's Message

● It has been said, "Where there is no vision, the people perish." In these times of despondency among the masses of people, leadership with vision is needed to accomplish a recovery in all avenues of human life. Throughout the history of the race, humanity has had its periods of serious difficulties which have arisen from various causes. Our problems at present are due largely to an economic depression which doubtless is the aftermath of the world war. There always have been some individuals who were able to see through the dark clouds to brighter days. The world needs leadership of this type in days like these, men and women who face forward with a determination to realize their best selves, individually and socially, as well as religiously. It is my ambition that students who have come in contact with La Verne College will have caught this spirit and therefore will be able to go into their several vocations and avocations capable of eliminating hindrances, from whatever cause, and of mastering the several situations in which they may find themselves. This means that they will assist in leading the masses out of economic depression into prosperity and happiness; that they will contribute much to the betterment of human relations, morally and religiously; that they will improve general political conditions; and that they will contribute a great deal toward world friendship and fellowship. To this end I take pleasure in giving my benediction to students and graduates of La Verne College.

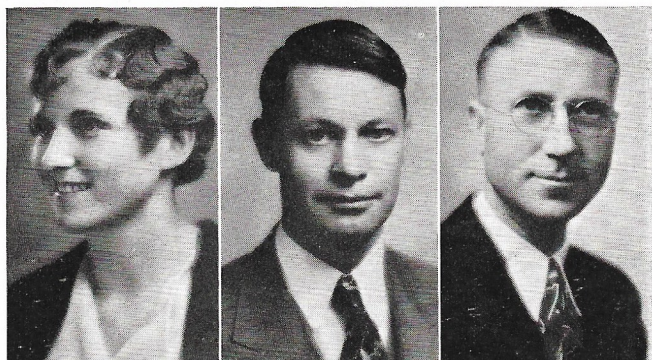
EDGAR ROTHROCK, *Chairman*
La Verne, Calif.



Board of Trustees

- C. M. HECKMAN, *Secretary*—Pasadena, Calif.
 E. R. BLICKENSTAFF, *Treasurer*—La Verne, Calif.
 DR. J. B. EMMERT—La Verne, Calif.
 S. G. HOLLINGER—McFarland, Calif.
 MRS. LORETTA WELTY—Patterson, Calif.
 I. D. YODER—La Verne, Calif.
 A. J. ELLENBERGER—Ashland, Oregon.
 LESTER VAUGHN—Laton, Calif.
 L. M. DAVENPORT—Los Angeles, Calif.
 A. M. WHITE—Empire, Calif.
 MARK D. LEHMER—Los Angeles, Calif.
 M. S. FRANTZ—Empire, Calif.
 J. A. ALLARD, JR.—Pomona, Calif.
 ARTHUR DURWARD—La Verne, Calif.
 C. I. MYER—Sunnyside, Wash.
 C. E. BOWMAN—Arrowwood, Alberta, Can.
- EX-OFFICIO
- ELLIS M. STUDEBAKER, *President*—La Verne, Calif.
 H. A. FRANTZ, *Field Secretary*—La Verne, Calif.

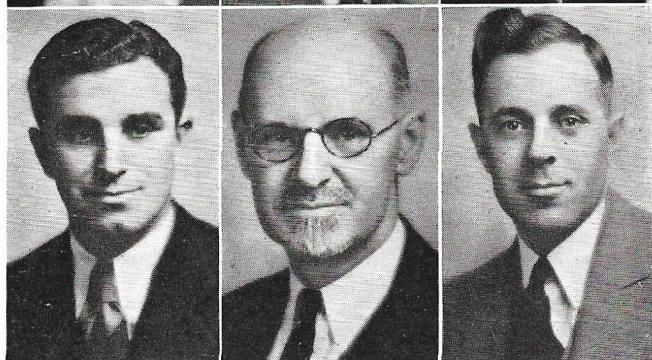
A D M I N I S T R A T I O N



ANDERSON, MRS. PHYLLIS
Physical Education for Women

BRANDT, JESSE C.
*Mathematics and Physics
Assistant Registrar*

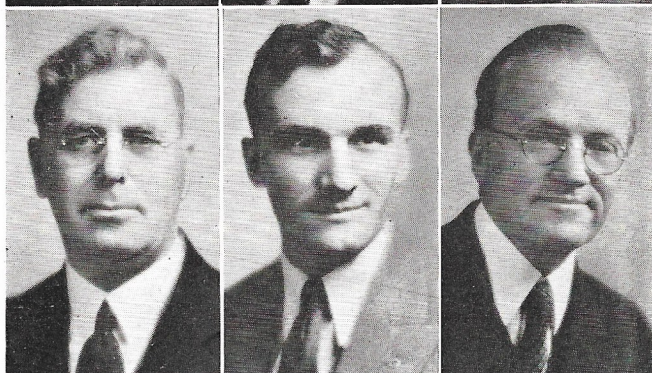
BRUBAKER, CRAWFORD F.
English



EISAN, LELAND G.
Physical Education

EMMERT, JESSE B.
Religious Education

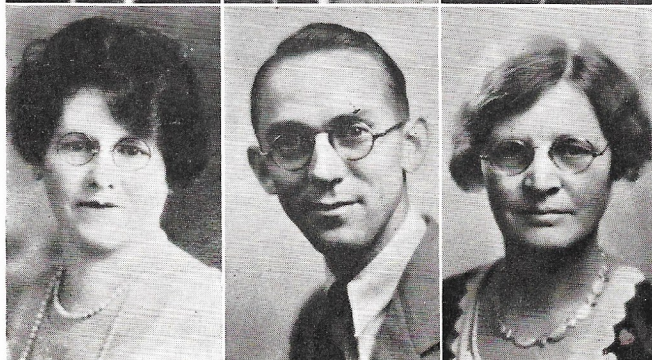
FRANTZ, HARPER W.
Chemistry and Registrar



FRANTZ, HARRISON A.
Field Secretary

GLICK, DALE I.
*Assistant in Physical Educa-
tion for Men
Mathematics and Education*

HAUGH, BENJAMIN S.
Vocal Music



HAUGH, LAURA E.
Speech

HOLLENBERG, GEORGE J.
Biology

HOLSINGER, MRS. HARRIET
Miller Hall Matron

ON

A D M I N I S T R A T I O N

PHYLLIS
for

Physics

WFOOD F.

G.

B.

W.
Registrar

MIN A.

ical Educa-
Education

MIN S.

E.

GEORGE J.

S. HARRIET
tron

WALKER, REV. G. K.
Pastor, Church of Brethren

MILLER, MRS. S. J.
Librarian

MILLER, SAMUEL J.
President Emeritus

MILLER, I. PAUL
Modern Languages

MUR, GLADDYS E.
History

RUTHERFORD, HORACE C.
Sociology and Education

SARAFIAN, KEVORK A.
*Modern Languages
Education*

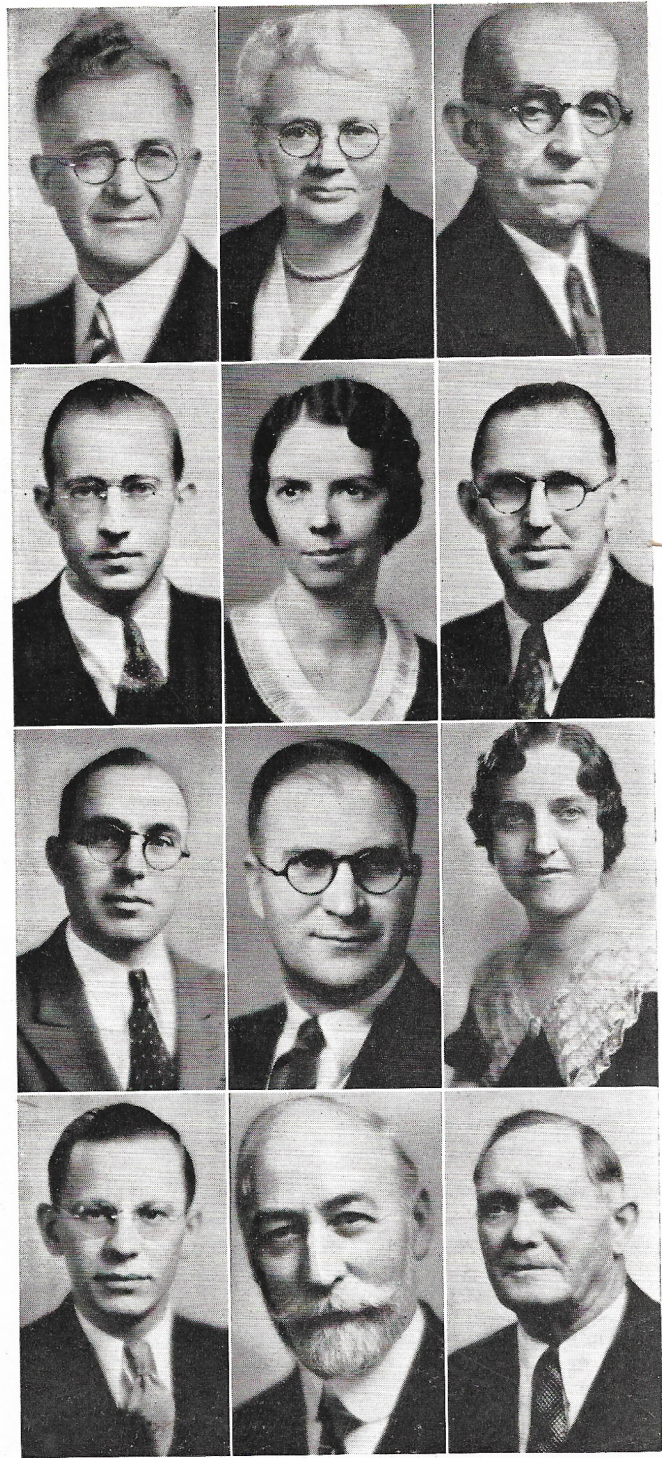
SPENCER, PETER L.
Education

STRABACH, NETTINA
Speech

TRAVIS, RALPH R.
*Piano, Pipe Organ,
Theoretical Music*

HOOVER, WILLIAM I. T.
*Dean of the College
Philosophy*

WOODY, ISAAC J.
*Supt. of Buildings and
Grounds*



A D M I N I S T R A T I O N



MAX FORNEY
*President of
Associated Students*

Max Forney

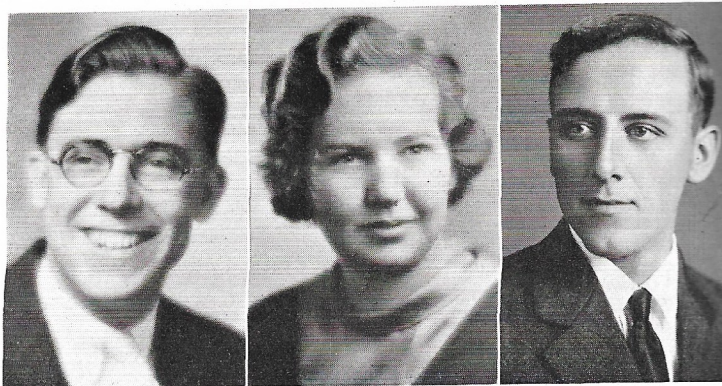
The Commission

● Student government is carried on by means of the organization known as the Associated Students of La Verne College. These students have placed the governmental control in the hands of a student body president and five commissioners — welfare, finance, publications, athletics and forensics. Among the detailed business of the Commission may be mentioned the sanctioning of awards, the passing on matters presented by the various commissioners, the approving of appointments, and making decisions on financial questions. The latter problem was the most serious facing this year's commission, but by unusual foresight and clear thinking the condition was handled in such a way as to be worthy of great praise. The commission has adequately supervised the student body activities such as "L" day, Snow day, and Beach day. The last one mentioned not only turned out to be the most successful of the three, but was acclaimed one of the most enjoyable days in the past several years. In the field of athletics, football was so handled that it operated on a paying basis. In forensics provision was made for entering participants in the various conference contests. Altogether, this year's commission faced and met successfully many difficult problems. They so handled affairs of the student body that it would be unjust to speak anything concerning the work except words of commendation.

ELVIN WILSON
*Commissioner of
Athletics*

EDNA SAMSON
*Commissioner of
Publications*

CLEO BERRY
*Commissioner of
Finance*



ELIZABETH LEHMAN
Commissioner of Welfare



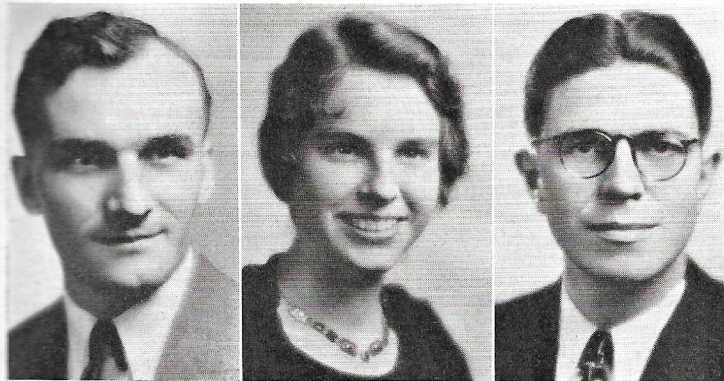
*Elizabeth
Lehman*

The Commission

● The position of President of the Associated Students was filled by Max Forney. He worked both hard and well and has become known as the originator of many important innovations. Always his watchword has been "fair play". Elizabeth Lehman, Commissioner of Welfare, directed the social life of the college this past year. Her work has not been spectacular, but it shows conscientious and consistent achievement. The job of Commissioner of Finance is exacting and often tedious. But in this capacity Arno Myers rendered efficient service and capably handled all matters pertaining to student body finance. Edna Samson's position as Commissioner of Publications has been difficult this year. Under her supervision have been all student publications. However, her wide experience has fitted her to fill such a position well. Elvin Wilson has been a busy Commissioner of Athletics. He has aided in the appointing of successful managers and in the determining of awards. It is Mr. Wilson's enthusiastic interest in athletics coupled with sane judgment that has so materially aided the progress of La Verne's athletes. Arnelia Brubaker, Commissioner of Forensics, has not only supervised the work of her office creditably but has successfully participated. The ever valuable Dale Glick, Graduate Manager, has been the constant friend and advisor to the other commissioners. He has encouraged and suggested along lines of worthy development.

Commission

as the Asso-
governmental
— welfare,
ness of the
on matters
and making
facing this
ndition was
adequately
h day. The
ree, but was
the field of
ensics provi-
Altogether,
s. They so
ng concern-



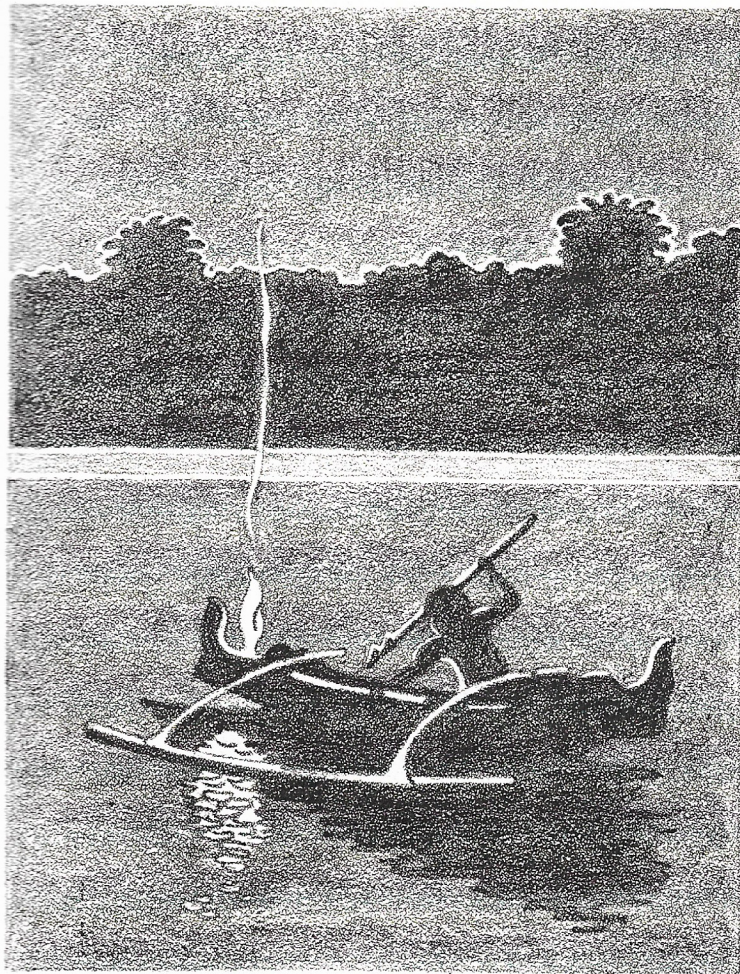
DALE GLICK
Graduate Manager

ARNELIA BRUBAKER
*Commissioner of
Forensics*

ARNO MYERS
*Commissioner of
Finance pro tem*

93

CLASSES



"Ka Lama-Lama! The torch fishermen! A moment of holding the torch aloft with spear ready! A splash, followed by a flurry and floundering, and an eel has been speared on the coral reefs of Waikiki!

T H E G R A D U A T E S



ELVIN WILSON
President

Class of 1933

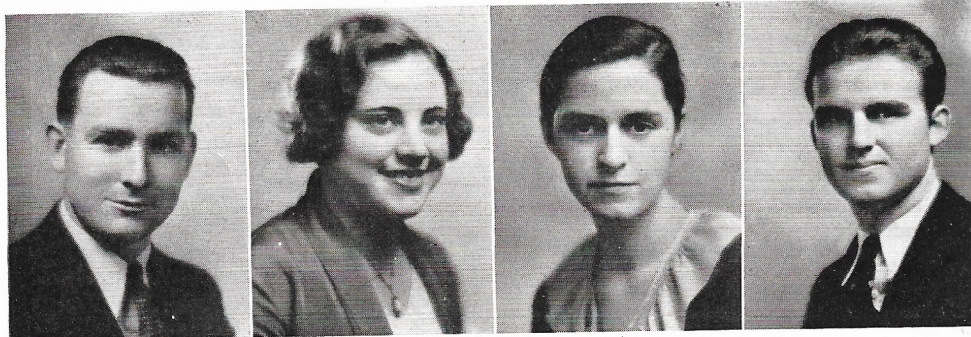
● The activities of the senior class of 1933 are swiftly drawing to a close with the advent of this volume. Throughout the four years at La Verne College this group of students has always been well represented in all fields of school endeavor. The college career of the class has been ably guided by the presidents, Maurice Shirk, Max Forney, Charles Snell and Elvin Wilson throughout the four successive years. Prominent activities in which the class has had representatives are varied. The Apollo Four and the Lyric Quartet were widely known in music circles. The dramatic society, Chi Delta Chi, had as its charter president a member of this senior class. The forensic department offered activities in interscholastic functions to the so-inclined members. Many school offices have been held by the graduates of "33." The class has also been well represented in all athletic contests. When the class of "33" were freshmen, the sophomore class met defeat at the traditional mud roll. The senior-sophomore party held in banquet style at fellowship hall, Jigsaw party, class meetings, "Senior Ditch," "Step Out Day" and student body programs are a few of the events the class members will long remember. Members of this year's cabinet are Elvin Wilson, John Heiser, Evelyn Wine, Vernon Heckman, Anna Messamer, and Dr. Sarafian serving in the capacities of president, vice president, secretary, treasurer, social chairman, and advisor respectively.

HEISER

WINE

MESSAMER

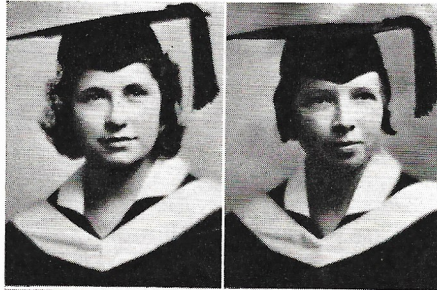
HECKMAN



E S T H E G R A D U A T E S

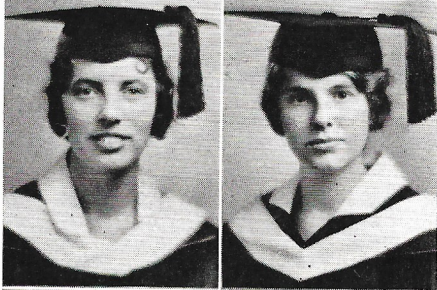
BARNHART, HAZEL MARIE
 Empire
 Education

Hazel Barnhart



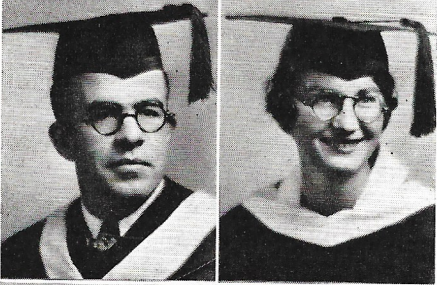
BONNER, MARY LEE
 Azusa
 Education

BOWMAN, ANITA MAE
 Claremont
 Education & Mathematics



BRUBAKER, ARNELIA
 Glendora
 Education

BRUNK, FRED J.
 Clovis, New Mexico
 Education



BUTNER, ALICE
 Covina
 Education

COFFMAN, EDITH
 Covina
 Education



COX, HESTER ROSA
 Colusa
 Education

CRITES, MARGARET PEARL
 Live Oak
 Social Science

*I'm sure glad I've
 heard you - Mom
 and Pop here - !
 Don't forget I'm
 just Margaret - "Crites"*



*In case you don't
 recognize the picture
 it's
 Evelyn Cleardorff*

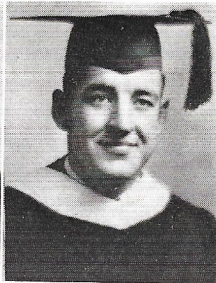
DEARDORFF, EVELYN F.
 La Verne
 English and Speech

T H E G R A D U A T E S

EBERSOLE, ELBERT H.
La Verne
Education & Mathematics

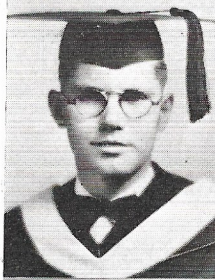


FORNEY, MAX
La Verne
Education & Social Science



GILLINGWATERS, IRA W.
Upland
Physical Sciences

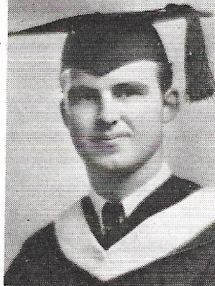
Ira W. Gillingwaters



GISH, HELEN W.
Upland
Social Science

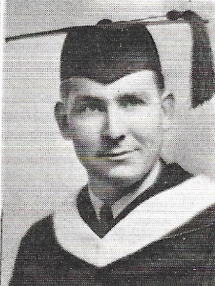


HECKMAN, VERNON L.
Pasadena
English and Speech



HEISER, JOHN E.
Salem, Oregon
Education & Social Science

John Heiser



HOKE, HARRIET LOUEAN
La Verne
English



HOLLINGER, MARY
Inglewood
Education



HORNER, FRANCES C.
La Verne
Education



HORNING, CONSTANCE I.
Long Beach
English, Speech, Education

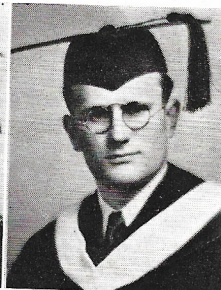


T E S

T H E G R A D U A T E S

MAX
Social Science

HOWELL, RUTH C.
Class
Education



HUNTER, K. SIDNEY
La Verne
Social Science

WEN W.
ce

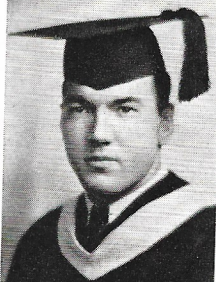
KENNEDY, HAZEL MARIE
Class
Education and Religion
Hazel Marie Kennedy



KUNS, OPAL MAE
Holtville
Philosophy and English

EN E.
Social Science

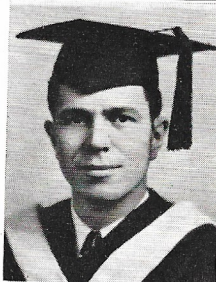
KEITH, PAUL
Thames
Education



MESSAMER, ANNA MAE
Adel, Iowa
Education

MARY

WILSON, ARNO E.
Cathlamet, Washington
Education & Social Science



Frances Nix
NIX, FRANCES
La Verne
English and Education

STANCE I.
Education

WATKINSON, EDWARD D.
Danda
Education & Social Science



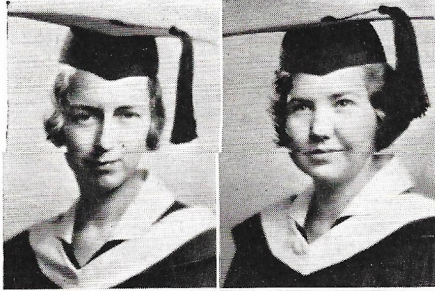
PAGE, DOROTHY
Strathmore
English

Dorothy Page

T H E G R A D U A T E S

RULE, FERN MAE
La Verne
Education

Fern Rule



SAMSON, EDNA MARIE
Pomona
Education

SHAFFORD, VERA MAE
Pasadena
Education

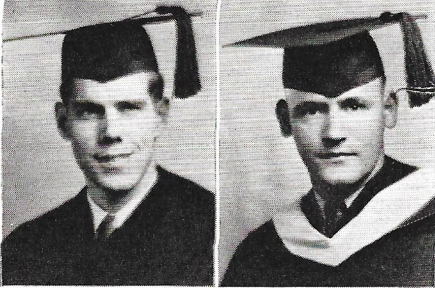
*It is a pleasure
to trade at your
lovely new drug
store Vera Mae's help*



SHEPP, ELEANOR IRENE
Pasadena
Biological Sciences

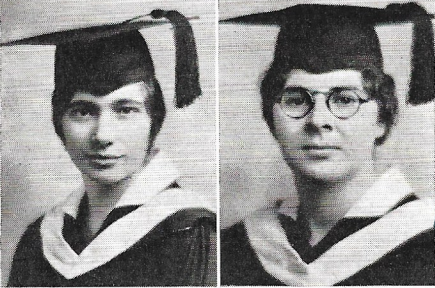
Shepp

SNELL JR., CHARLES H.
Victorville
Science



Harold Stern
STERN, HAROLD
Oroville, Washington
Education & Social Science

STERN, VIRGINIA
Oroville, Washington
Education

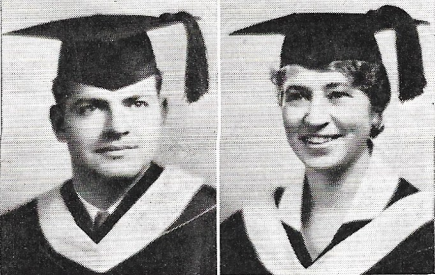


STATLER, ESTHER
Glendale, Arizona
Education

*with greatest appreciation
for all you do for us
Esther Statler*

STOVER, DANIEL W.
Kirkland, Washington
Education

*Dan
Stover*



TROSTLE, LUCY E.
Pasadena
Education

*Best wishes
Lucy E. Trostle*

T E S

T H E G R A D U A T E S

EDNA MARIE

ELEANOR IRENE

Sciences

Starn
CAROLD
Washington
& Social Science

ESTHER
Arizona

greatest oppo
you do for L.W.C.
in states.

wishes -
Lucy E. Troth
LUCY E.

WARRINGTON, GRACE
In Time
Education
I was glad for
the picture
you gave

WILSON, RONALD F.
In Time
Biology



Molly
WARRINGTON, MOLLY
Laton
English and Education

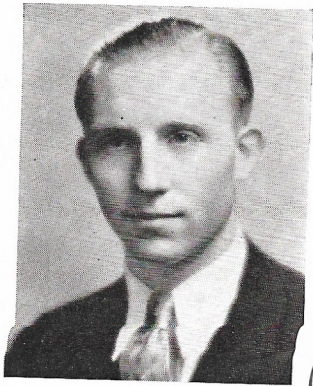


WILSON, ELVIN K.
Pomona
Education and English



WINE, EVELYN M.
Reedley
Education

U N D E R G R A D U A T E S



AUBREY CALVERT
President

Calvert

Class of 1934

● The class of '34 has again passed a successful year within the portals of her dear old Alma Mater. Even though it has been a hard year for everyone, the Junior class has given its every effort towards perpetuating the true La Verne spirit, the spirit that makes our college stand out above all others. The Juniors started the year off right by electing Aubrey Calvert as president, and under his guidance the Juniors have accomplished wonders and proved themselves to be one of the best classes La Verne has produced. At the beginning of the year they extended a welcoming hand to the Frosh in the form of a bunco party in the gym where many new acquaintances were made that have lasted throughout the year. And then the Junior Play, that super-production, "Dulcy," with Ruth Rothrock taking the lead. It was something new and different and very much appreciated by all who saw it. Next came the Junior-Senior Banquet when the Juniors gave the Seniors a farewell they will never forget. In football and basketball the Juniors were well represented and had a large part in the most successful year of sports La Verne has known. Though it is with regret the Juniors bid the Seniors good-bye, they feel that they are fully prepared to assume the responsibilities that shall be theirs next year.



Edith Lisans

Edith Lisans

Edith Lisans

Edith Lisans

Edith Lisans

Edith Lisans

Edith Lisans

Edith Lisans

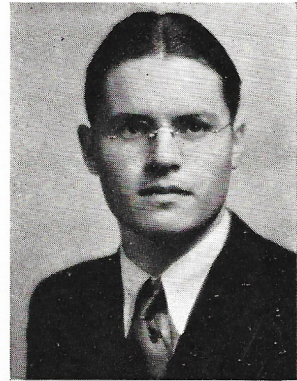
Ruth Clark

Edith Lisans

Emma Mae Hoff

Levin Willis

E S U N D E R G R A D U A T E S



REULIN BREUSCH
President

Class of 1935

● The fact that a large number of the original class of last year, and even of the first semester of this year, have not been able to continue in school is a cause for much regret; but the group that is left is making its contributions to La Verne College by participation in practically every student activity. The support of the Sophomore Class is felt in athletics, dramatics, music, debate, publications, and in the various clubs and organizations. Four members of the class presented a clever one act play, "A Cup of Tea" as a special student body program. On "L" Day it was the Sophomore Class that prepared those delicious noodles which tasted so good after a long day of fun. And the same class provided entertainment around the camp fire on Beach Day. The class has not been without its social affairs too. The first party of the year was at Miller Hall, followed by a dinner and program at Fellowship Hall, as the guests of the Seniors. The Sophomores returned this delightful party near the close of school with one full of originality and gaiety. Betty Shaffer's party in her home in Brea proved to be one of the best times the class ever had together. This year's cabinet includes Rulin Bruesch, president; Betty Shaffer, vice president; Kathryn Blickenstaff, secretary; Jay Bessey, treasurer.



Bernie Brubaker

John Dickey

Paul Stanton

Ida Finney

ss of 1934

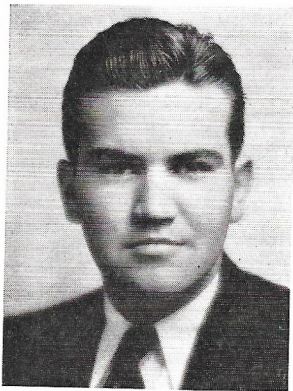
er dear old
or class has
spirit that
ff right by
ave accom-
e has pro-
e Frosh in
made that
roduction,
fferent and
quet when
basketball
at year of
ors good-
t shall be

Carole J. Angley



Walter Willis

U N D E R G R A D U A T E S



BOB CRAGO
President

Bob Crago

Class of 1936

● Deep in the heart of every freshman lies a sense of class loyalty, but dearer and stronger still is the bond which ties every heart to our "Fair Alma Mater." Under the guidance of Mr. Brandt and the leadership of the officers, Bob Crago, Roscoe Vaniman and Edna Vaniman, the class of '36 has gone steadily and persistently forward. College life was new, studies hard and the way sometimes long and dark, but the freshmen never gave up the fight. In spite of studies they squeezed in time for outside activities such as a get-acquainted-party, a Chinese progressive social, and a skating party. Debate, dramatics, and music were not lacking in the program. The greatest per cent of students to complete the long climb to the "L" were freshmen. On clean-up day not a single freshman shirked his job. The freshmen have done well in sports. Next year the class will contribute men to football, basketball and track. The freshmen girls have won places on the various all-school teams. A high point in the year's program was the mud-roll. The tie was won by the freshmen boys. The class of '36 holds aloft the flaming torch which stands for the high ideals of La Verne College. Through the years to come the class will strive always to maintain the high standards of the beloved Alma Mater.



Raymond Shatt

Edna Vaniman

Alma Mater

Class of 1936

at dearer and
" Under the
coe Vaniman
ard. College
eshmen never
ctivities such
arty. Debate,
t of students
not a single
ear the class
ls have won
as the mud-
the flaming
ears to come
Alma Mater.



RAINBOW LAND

Here is the entrance to rainbow land,
With whispering palms and coral strand,
Where maidens, with *maile*
And golden shower,
Wear magical *leis*
In this magical bower.

This magical land
Where the mists are born,
A fairy dream
Of a dreamland morn,
With filmy halo crowning the crest
Where the sunrise broods on a rainbow nest.

And arches of indigo, purple and gold,
Out of this magical mist unfold.
And over the portals
Of dawn is spread
A cloth of gold
For the rainbow's bed.

This magical land
Where the rainbow's rest
On magical sunbeams
Over the west,
And linger fondly among the hills
Where the sun his magical flame distills.
I drop my anchor and end my quest
Where the rainbow sleeps on the sunbeam's breast.

By EARLEY VERNON WILCOX

933

ACTIVITIES



"There's the Hawaii of the Hula. A land of throbbing rhythms, strange imagery, soft breeze and softer song. Life floats along, indolent, languorous . . . A dance-poem, telling you with flowing hands and body of a waterfall poised on a cliff's edge, a storm on the battlefield of the tropic sea, a flower raising its face to the rain, the beauty of a queen, a song bird flying to the sun. There'll be the soft thrum of ukeleles or the thudding beat of a gourd, faint sea-wind, palms, green grass for a carpet . . ."

anguished gentle-
 Manuel Kwon, our
 ange student
 is none other
 age at Asilomar;
 boys, Dan, Ed,
 illinger (picture
 his fatal plunge)
 concern over their
 essor Travis in
 equent maniacal
 n Wilson, effi-
 president, caught
 moment; Dale
 pessimistic about
 the business but
 elly already for
 idson and Stutz
 se; John Dickey
 own the dia-
 Mel, and Jay
 m on the dorm
 pretending whale;
 ercher allowing
 to be snapped?
 doesn't like San
 l tells you so;
 a Swede from
 prof. Miller and
 for the camera;
 llis and Nordie
 ded; Frank Say-
 a smile and a
 wee and Cecil;
 Lord Someone-
 ela-wala fame;
 his annual dog
 said this
 out? Pee-wee,
 or action; Ver-
 at chieftain and
 of the Choral
 Lela-wala.

● The trouser fad seems to have overtaken our campus, including Betty and Ruth; Beach Day happened before beer so it must be plain old aqua Alta is enjoying; a comely frosh-woman, Ruth McReynolds; the little girls causing the optical illusion are Marie Tingle, Arnelia, Anna, and Libbet; four maids in calico gowns, Bunchy, Frances, Eddie, and Vera Mae; Eileen, Molly, Frances, and Grace vainly seeking a sun-tan; the tiny picture reveals the smiles of Maurine, Gwendolyn, and Evelyn; Louise Willis makes a charming Indian maiden; Alice Strate gone native; two frosh charmers, Frances and Joy; Vera Mae apparently enjoying her thumb; Betty and Helen grace the dorm steps; Zelda and Eileen show their famous smiles as does also the bedimpled Maurine; who can Thelma and Velma be waiting for? Lucy goes Hiawatha for a day; Shepp and Torchy off for the desert; Marion and Dorothy and where is Singer? Frances and Alice belong to the not-hard-to-look-at-lower-extremities; a pantomime in one act; Alice Ben Bolt; Grace and Ede racketeering.



MAIDS OF BEAUTY



● Clean-up Day with its hard work intermingled with fun is one which calls forth cooperation in actual labor from the entire student body. Clean shutters were partly due to the hard work of Joy and Frances; Myers and White quite obviously not working; these shovels were props more than their share of the time; a wheelbarrow full of pulchritude; another shovel being overworked; Holl, Travis, Nordie and Kercher (what, again?!?) taking time out; Annette probably wishing she was hoeing weeds or anything else; faculty-member Frantz displaying true democracy; a clean-up day silhouette; a little publicity for Forney; Dr. Emmert holding down a hoe; a short pause for second wind; is Frankie watering down the field or somebody? A handful; Wilson doing a risky bit of fixin'; "O dear! we did all these weeds last year!" Notice who heads the rush for food; Elvin, handyman around the dorm; a hard morning's work rewarded; the track meet, the end of a perfect day.

CAMPUS CLEANUP

fire Rally was the
 held at La Verne,
 grand cooperative
 of the frosh men.
 management of
 President Davidson,
 took on huge pro-
 d was a burning
 the frosh used a
 to haul the wood
 and the story
 ad of beautiful
 to be returned to
 p owner who
 property to the
 ir destined de-
 nce the rally
 an Diego game
 as made to re-
 e Aztec wig-
 own with our
 ishing the In-
 re. The action
 how the Leop-
 he Red Devils
 ashful young
 who for some
 son hates to
 ed; Captain
 the flu insist-
 last practice;
 Frankie and
 etween grid-
 kie doing a
 mary clown-
 ; Nordie all
 ach Lee finds
 little tennis
 and Coach
 ased about
 ooks as if
 ve taken a
 hile at the
 ; Al, our
 eader, off

● Publication duties fall heavily upon Helen and Hilly; Max and Ede pause during a love set; a campus vehicle held down by three campus sheiks; someone named Tracie to do this; the frosh court last year didn't dampen this situation any; the campus cut-ups; Ed has something Eddie evidently wants right now; the admirable Lord and Lady of Lela-walk; a likeable college pair; in fact the college is noted for its pair production, Thelma, Holl, Bernie and Cal are two more examples; Swihart and his bicycle are another; this year's bandaged boy, Charlie Snell; Kathryn and Hilly view the Long Beach ruins; what will Betty do next year, poor thing? Dorothy should know better than to try and teach this animal tricks; a college combination which has reached a happy consummation.



COLLEGIATE COMBINATIONS

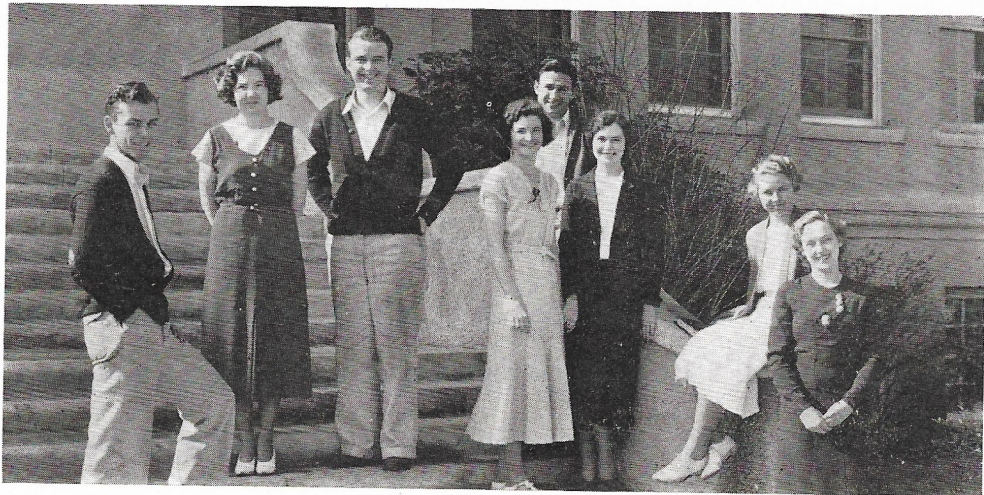
P U B L I C A T I O N S



GRACE WARD
Editor

The Lambda

● Despite the fact that they were faced with the problem of putting out a year book on a budget less than half as large as that of last year, this year's Lambda staff determined to maintain the usual high standard. And they have succeeded in providing a real picture book, one which represents the activities and interests of the students. The Hawaiian theme has been particularly appropriate this year because of the opportunity La Verne College has been given by way of an exchange student from the University of Hawaii. The editor, Grace Ward, was willing and able to assume the responsibility of this year's Lambda. She gave generously of her time and wisely of her ideas. In Helen Heisey she found an able assistant, one who was not afraid of work and who, above all, was dependable. The careful attention which Kathryn Blickenstaff gave to details made her a capable mounting editor. Because Edith Eisan has such a keen sense of humor it was quite natural that she should be the joke editor. And the fact that Betty Shaffer possessed a typewriter was not the only reason she was the choice for staff typist. The business manager, Harold Hylton, had a particularly difficult task. Yet he with his assistants, Vernon Heckman, Harold Arnold, and Ed Baer did a fine piece of work without which the publication of the Lambda would have been impossible.



RUTH ROTHROCK
Editor

Ruth Rothrock



The Lambda

a year book
 a staff deter-
 a providing a
 tudents. The
 opportunity
 University of
 possibility of
 as. In Helen
 no, above all,
 details made
 of humor it
 Betty Shaffer
 typist. The
 he with his
 ce of work

The Handbook

● The Handbook, published annually by the Associated Students of La Verne College, outlines the activities of all student organizations for the year, and includes a complete athletic schedule for all sports, a list of yells and songs, rules for freshmen, class schedules, a copy of the constitution of the Associated Students, and a calendar printed in a diary form. Due to its handy size, the Handbook may be carried by students at all times. Its service is invaluable as a reference book for all athletic schedules as well as songs and yells. This year's Handbook included the music for the *Alma Mater Song* and *To Win The Day* in addition to the words. The words of each of the student officers together with their pictures serve as an inspiration to the students they are to lead during the year. The new students get a clear conception of all the student organizations and the opportunity they may have to participate in their activities. The Handbook is essential to the old students, as well, because the calendar offers a skeleton outline for all activities of the year. This year's Handbook staff produced a Handbook of superior make-up and content. It is hoped that future staffs may continue to improve upon this important student publication. The staff included Ruth Rothrock, editor; Elizabeth Lehman, associate editor; Rulin Bruesch, business manager.



F O R E N S I C S



CRAWFORD F. BRUBAKER
Debate Coach

Debate Squads

For the year 1932-33, debate began with a large squad of men and women interested and ready to work. Both men's and women's Conferences chose the Pi Kappa Delta question: "Resolved, that the United States should agree to cancellation of the inter-allied war debts." Arnelia Brubaker, Commissioner of Forensics, and Professor C. F. Brubaker, debate coach, superintended the work of the year. The first contest came December 2nd and 3rd in the form of a practice tournament at Redlands. All colleges, universities, and Junior Colleges were invited. La Verne came out with a high score, the women having the edge on the men. The four teams representing La Verne were: Maurine Hamann and Virginia Stern, Helen Heisey and Arnelia Brubaker, Royal Glick and Adron Way, and Manuel Kwon and John Irvin Wolfe. All teams debated both sides of the question. During the interim of this tournament and the Conference tournament, some non-decision practice debates were held to keep the teams in condition for the final and major contest. This was held at Cal-Tech February 28. The men were not able to enter this tournament, but the women entered and took second place, with U.C.L.A. in the lead. The same women's teams were entered in this contest, as entered the Redlands tournament. The team composed of Helen Heisey and Arnelia Brubaker defeated U.C.L.A.'s otherwise undefeated team, thus losing only one debate, that to Pasadena College. Professor Miller ably assisted with some coaching and also acted as a judge in the Cal-Tech Tournament.

John Irvin Wolfe



ate Squads

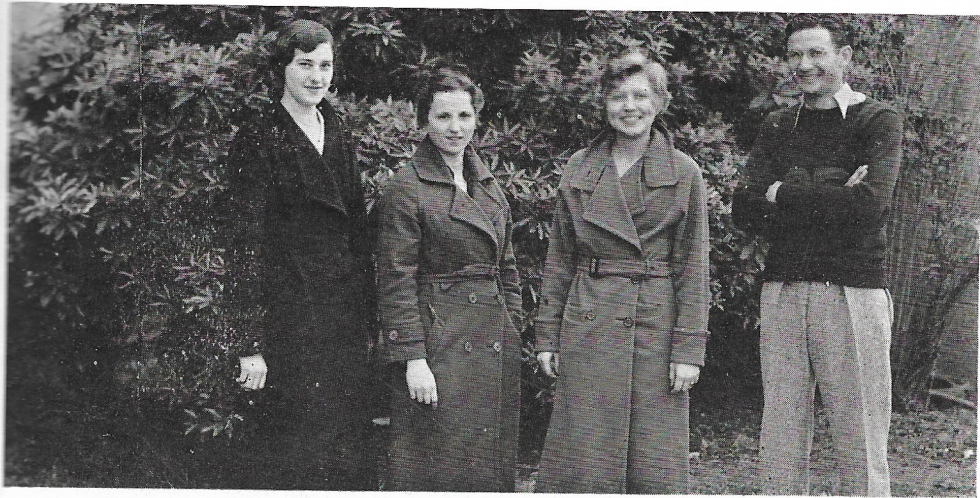
n interested
Kappa Delta
f the inter-
essor C. F.
ontest came
All colleges,
high score,
Verne were:
Royal Glick
both sides
e tourna-
ndition for
n were not
place, with
as entered
a Brubaker
e, that to
acted as
Orin Wolfe

NETTINA STROBACH
Coach



Oratorically Speaking

Forensic activities were more successful than usual this year. Greater interest was shown and a larger number participated in all tryouts. The first contest of the year was the extemporaneous contest held at Cal-Christian College, November 15. After an elimination contest, Maurine Hamann was chosen to represent the women, and Arno Myers to represent the men. Miss Hamann won first place, while Myers came in about third. The Keiser Oratorical Contest was held in La Verne, April 11th, with Maurine Hamann taking first, Manuel Kwon second, and Arno Myers third, out of seven contestants. Thus Miss Hamann represented La Verne in the Women's Conference Oratorical Contest at Redlands, April 20th, and again was honored by tying with U. S. C. for second place, with U. C. L. A. in the lead. Arno Myers again represented La Verne in the Men's Contest held at Whittier, April 27th, and came out with banners flying. In May the W. C. T. U. sponsored an Oratorical Contest on Temperance. The entire Public Speaking Class entered, making this also a success. The final work of the year was the Declamation Contest for both men's and women's conferences. This was held May 12th. Cuttings from Shakespeare were used. The contestants were Maurine Hamann, Constance Horning, Manuel Kwon and Kenneth Heckman. Thus, with debate work, was completed an active and successful year in the forensic activities of La Verne College.



MAKERS OF MELODY



MARVIN BOLLINGER
President

Choral Union

● The Choral Union is esteemed and praised on the college campus and in the community. Membership consists of students who desire valuable musical experience in singing the great religious and secular masterpieces. The purpose of the Choral Union is to be a cultural asset to the community and to develop a finer appreciation of the singing art. Special groups drawn from the Choral Union have been especially generous in their contributions. The octette, composed of some of the foremost soloists of the school, has received a great deal of praise. Marian Steves, Edith Flory, Vera Mae Shafford, Dorothy Robinson, Marvin Bolinger, Edwin Baer, Vernon Heckman and Charles Snell are members of this group. A ladies quartet composed of the four women mentioned has been a featured group. A ladies trio, composed of Anna Messamer, Mrs. Lucy Trostle, and Vera Mae Shafford, has sung at various churches in the immediate vicinity. In the spring a dramatic operetta, "Lelawala," written by Charles Wakefield Cadman was successfully presented. The interesting plot was taken from an Indian legend. An oratorio by Dubois, "The Seven Last Words of Christ," was presented at the Easter season. Other sacred programs were presented at various times. Efficient direction of this organization has been under an executive committee of students, Marvin Bolinger and Vernon Heckman, working in conjunction with Professor B. S. Haugh as musical director and Professor Ralph R. Travis as pianist.



*Edith
Vainman*

ODY MAKERS OF MELODY

AL BERGEN
Director

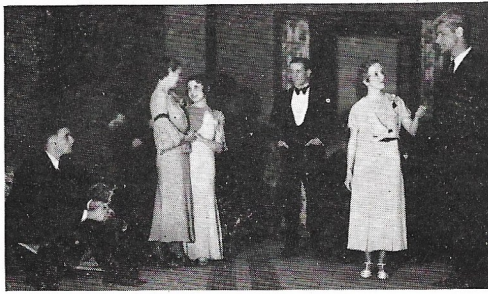


Orchestra

● The 1932-33 La Verne College Orchestra has captured an accomplished place in the list of notable achievements during the past year. With last year's director gone, the prospects of a college orchestra presented a discouraging situation. Quite spontaneously Mr. Bergen received permission to assemble all students interested in instrumental music. The result was gratifying, and consequently the students have listened to a well-trained orchestra playing such favorite numbers as "The Desert Song," "New Moon" and "Show Boat" at banquets and college functions. Director Al Bergen has had extended experience in music. In 1928, he sang on "The Citrus Four," which made a world tour in that year. In Long Beach, he collaborated with Herbert L. Clark in the Long Beach City Band and was assistant director of the Poly High School Orchestra in that city. Miss Ruth Hummel has presided as president of the orchestra since its organization. The personnel of the orchestra includes Evelyn Wine, pianist; Ruth Hummel, Maurine Hamann, Alta McQueen, Pearl Smead, Rulin Bruesch, Robert Harris, violins; Maurine Moomaw, June Walker, cellos; Doris Beckner, Adron Way, Ronald Williams, flutes; Helen Brownberger, Kenneth Heckman, clarinets; Roscoe Vaniman, Ellard Betz, Virgil Koller, Carl MacLean, trumpets; Elbert Ebersole, Ray Van Dusen, saxophones; Willard Davison, alto horn; Vernon Heckman, Prof. Paul Miller, Ray Williams, trombones; Dan Stover, sousaphone; George Rule, Cliff Siddall, drums.



BEHIND THE FOOTLIGHTS

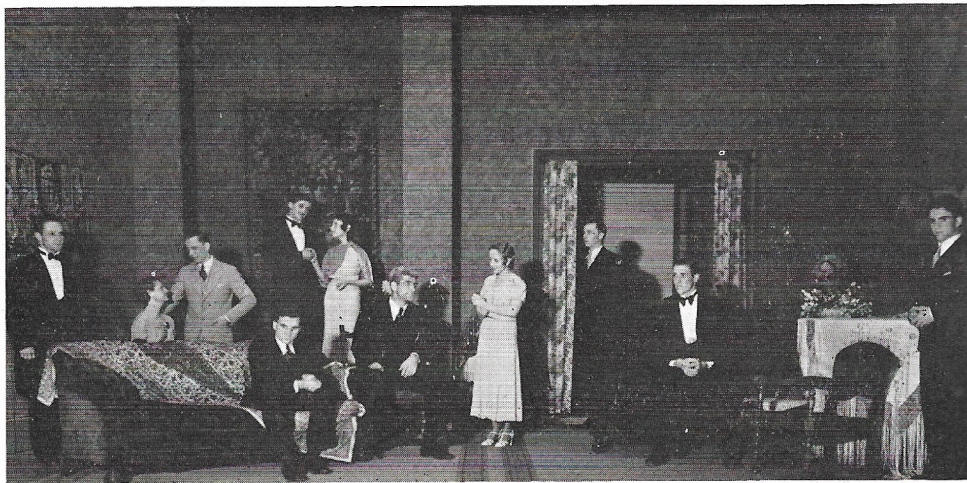


From left to right:
GLICK, LEHMAN, SELLER,
SAYLOR, ROTHROCK, AND
KERCHER

Junior Class Play

● Success for the Juniors! Miss Nettina Strobach with the fine cooperation of the Junior Class made "Dulcy" a big success. Ruth Rothrock, who portrayed the part of Dulcy, showed her dramatic ability as the wife of Gordon Smith, taken by Royal Glick. The sub-plot of the play was centered about Angela Forbes, played by Zelda Sheller, and her several admirers including Vincent Leach, Tom Sterrett, and William Park. Vincent Leach (Marvin Bollinger) kept the audience in gales of laughter as he explained the long drawn out plots of his scenarios. Ed Baer, as Tom Sterrett, imitated to perfection the business man who knew nothing of love (then). The situation ended happily, however, when William Park (Frank Saylor) known as Dulcy's brother, eloped with Angela. Angela's parents, Mr. and Mrs. Forbes, played by Fred Kercher and Elizabeth Lehman, furnished no end of merriment with their numerous family rows. Ralph Travis, as the psychopathic pianist, gave a realistic and effective characterization. Minor parts taken by Aubrey Calvert and Floyd Kelly were done equally as well, and showed much preparation. The play was excellently received. One of the interesting things connected with the production was the discovery of new talent. Several of the cast found ready recognition of their ability when they were invited to become members of Chi Delta Chi.

Kelley, Lehman, Travis,
Glick, Bollinger, Sheller, Kercher, Rothrock
Calvert, Saylor, and Baer.



BEHIND THE FOOTLIGHTS

Chi Delta Chi Play

● Under the direction of Ruth Rothrock, Chi Delta Chi, the college dramatics club, produced successfully Juliet W. Thompkin's three-act comedy, "Once There Was a Princess," March 2. The plot dealt with a young American girl who had been married against her wishes to an Italian prince by her fame-seeking parents. But the girl always yearned to return to her friends in America and especially to Phil, her childhood sweetheart who remained true. Upon the death of her husband, the prince, the girl journeyed to her old home in America only to be taken as the sewing woman until she appeared in elegance and finery as the people thought a princess should appear. The play ended with a human interest scene between the princess and her remembered sweetheart as they made plans for a wee home of their own in Italy. The main roles were played by Constance Horning as the Princess Dellatorre, Frank Saylor as Joe Boyd, Eleanor Shepp as Mrs. Joe Boyd, Edith Essan as Ruby Boyd, Ardith Horning as Aunt Meta Trimble, Harold Hylton as Phil Lennox, and Kathryn Blickenstaff as Hazel Boyd. Other parts were played by Howard Nordstrom as Milton D'Arcy, Maurine Hamann as Mrs. Purrington, Alice Strate as Mrs. Server, Manuel Kwon as Signor Moroni, Opal Kuns as the old princess, Betty Shaffer as Josephine, a French maid, Glayds Yoder as Jennie, a young girl, and Ruth Miller, as Ada, another young girl.

Senior Class Play

eration of the
d the part of
Royal Glick.
la Sheller, and
ark. Vincent
ined the long
perfection the
ily, however,
with Angela.
eth Lehman,
ravis, as the
parts taken
much prep-
connected
found ready
i Delta Chi.

Senior Class Play

Jenny Bumpsted	Opal Kuns
Myra Bumpsted	Frances Nix
Mabel Bumpsted	Eleanor Shepp
Elaine Bumpsted	Constance Horning
Cyrus Bumpsted	Elvin Wilson
Bill Clark	Max Forney
Sam Green	Vernon Heckman
Reverend Dr. Stump	Ronald Williams
A stranger	Charles Snell
Quinn	Paul Lathrop

● "Broken Dishes," a comedy in three acts written by Martin Flavin, takes place between seven and eleven on a winter evening in the Bumpsted home in a small mid-western town. Jenny, the wife of Cyrus and mother of the three girls, is severe, capable, commanding. Myra is thirty, sour, homely, while Mabel is twenty-six, placid, dull looking. Elaine, the prize of the family, is sweet, pretty and twenty. Twenty years of clerking in Bascom's store and thirty years of Jenny's ceaseless plaint have failed to kill a little twinkle in the eyes of Cyrus. Bill Clark, a tall, clean, wholesome looking country chap, meets an obstacle, Jenny, in his ardent love for Elaine. Sam Green, caretaker of the cemetery grounds, has a bark worse than his bite. Reverend Dr. Stump, possessing a chirping voice, is very near-sighted and as deaf as a post. The stranger, Jenny's Chester Armstrong, is recognized at sight as broad shouldered with polished manners, easy and confident. Quinn, the detective, is a giant of a man. A most successful production of the play on Friday, May 26, can be attributed to the able and efficient direction of Miss Nettina Strobach and the cooperation of various committees and the cast.



C A M P U S C L U B S

H. Glick

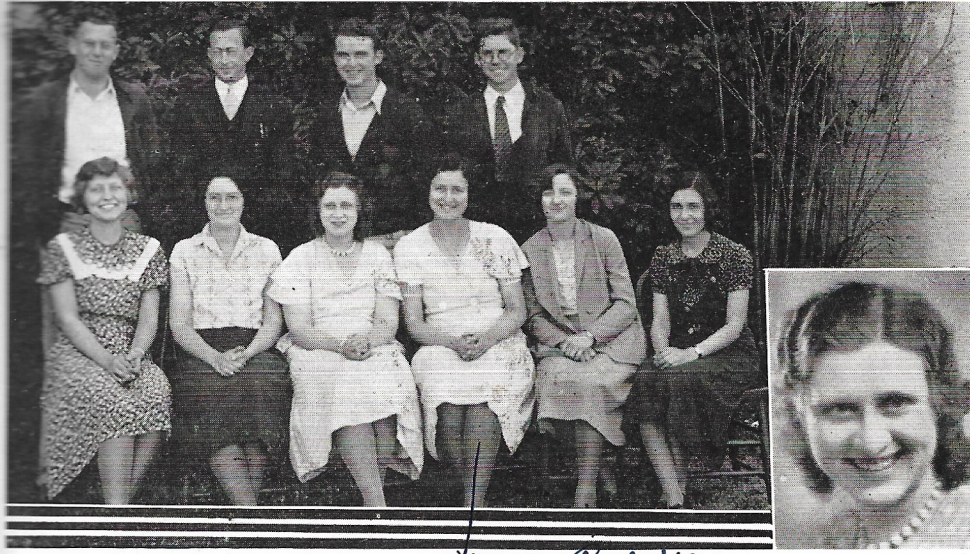


*Inset: Lauver. Top row: Trostle, Shepp, Glick, Breusch, Gans, Blackerby.
Lower row: Shafford, Kennedy, Samson, Lauver, Muir, Cox, Blickenstaff, Shaffer, Heisey.*

International Relations

● The International Relations Club has filled its second year of existence full of varied and useful activities. Two members were sent to the Institute of Pacific Relations held at Redlands University during the Thanksgiving week-end. Six members attended the annual conference of International Relations Clubs at U.C.L.A. in December. The club made one reconciliation trip to the Mexican Quarters of El Monte and Los Angeles visiting Mexican homes, shops, a candy factory, and church. A few members have made speeches on world affairs before various organizations and have been so well received as to be asked for return engagements. With the cooperation of the C. E. and Epworth League the privilege of hearing a Chinese student was realized. The Carnegie Foundation for International Peace has given the club a number of books on international affairs which have proved interesting as well as valuable in the group studies of the club. During the second semester, the club divided. Under the new plan, the women's section met in Miss Muir's room in Miller Hall once a week while the men met with Professor Brubaker. Miss Muir, the faculty advisor, has been an unfailing inspiration in this year's activities. Under the excellent leadership of the president, Mary Ellen Lauver, and other officers, the club has been able to enjoy many interesting meetings and worth while activities. The other cabinet members are: corresponding secretary, Hester Cox; recording secretary and treasurer, Kathryn Blickenstaff.

S C A M P U S C L U B S



Irene M. Blackerby '34

Top row: Nordstrum, Miller, Heckman, Gillingwaters;
 Bottom row: Hamann, Pence, Blackerby, Rule, Kittinger, Willis.
 Inset: Blackerby, Pres.

Irene Blackerby!

Modern Language

● The Modern Language Club, which was organized in the fall of 1929, has completed its third year as an active organization in La Verne College. The club has been aided this year by L. Paul Miller, professor of modern languages. The organization aims to create a better understanding of modern languages and of the people who speak these languages as their native tongue. It also endeavors to secure a real appreciation of foreign art, music and literature. Meetings in which these aims have been studied have been an important feature of the year's work. But they have been supplemented by social entertainments, including a skate and a taffy pull. Members of the Modern Language Club joined the International Relations Club's visit to Heck's Mexican Camp in El Monte, the Plaza in Los Angeles, and the settlement work in Belvedere. They returned with many curios and unique articles, the products of Mexican handicraft. In January a Spanish program was presented by the Spanish American Institute Quartet and members of the Mexican Protestant Church to the enjoyment of the club members. In May the club gave a program at the Mexican Protestant Church in La Verne. At the beginning of the year the club adopted a new code of membership. After proper initiation, the pledges were duly granted membership. The officers serving this past year are Irene Blackerby, president; Vernon Heckman, vice president; Anna Messamer, secretary-treasurer; Fern Rule, reporter.

C A M P U S L U B S

Kathryn Perry



Inset: Hollinger, Pres. Left to right: Flory, Samson, Messamer, Shafford, Muir, Holsinger, Hollinger, Perry, Hoke, Brubaker, Shepp and Blickenstaff.

Young Women's Christian Association

● "Y.W.C.A." signifies a group of Christian young women united in the "desire to realize full and creative life through a growing knowledge of God." On the La Verne College campus the Y.W.C.A. aims to fulfill this purpose by creating worth while and wholesome attitudes and atmospheres on the campus and by helping each girl to realize for herself a fuller and more meaningful life. The organization does this by finding out the main interests of each girl and then giving her a chance to develop these interests while working on some Y.W.C.A. activity. This not only develops her sense of responsibility and cooperation, but helps her to make new and lasting friendships. The Y.W.C.A. is the one group on the campus which invites each girl to membership. Besides the bi-weekly programs, which have included fascinating speakers and sewing bees and teas, some of the other activities sponsored by the Y.W.C.A. this past year were: Big and Little Sister Movement, Christmas Vesper Services, Feast of Nations Cafeteria Supper, Valentine Friendship Notes, Hi-Jinks, and Mothers' and Daughters' Banquet. The capable cabinet for the past year included Mary Hollinger, president; Kathryn Blickenstaff, vice president; Anna Messamer, secretary; Eleanor Shepp, treasurer; Harriet Hoke, social chairman; Edna Samson, publicity; Kathryn Perry, membership; Bernie Brubaker, social welfare; Edith Flory and Vera Mae Shafford, music directors.

B S C A M P U S C L U B S



Left to right: Crites, Kwon, Swihart, Heiser, Wilson, Snell, and Brandt. Inset: Snell, Pres.

Young Men's Christian Association

● The Y.M.C.A. under the able leadership of Charles Snell and his supporting officers has taken an active part in the college activities this year. The Y.M. helped sponsor the first "exchange student" program with the University of Hawaii, and feels proud to have been able to have had a student with the personality and good cheer that Manuel Kwon has shown on the campus this year. The Y.M. also feels equally proud to have been able to send from the La Verne student body such a splendid representative as Bob Walker has proved himself to be. The Y.M.C.A. retreat at Jenk's Lake, instead of merely being held for the enjoyment and fellowship that is always had by its members, was used as an opportunity to interest prospective students in La Verne College. Each member of the Y.M. that possibly could, brought as his guest some friend that he thought might come to La Verne. The spirit of real genuine fellowship that was shown between the Y.M. members and the guests was just another radiation of the bigger spirit of La Verne friendship. It is the hope of the group that these contacts will result in an even more ideal addition to the men of the campus. The members of this year's cabinet are: Charles Snell, president; John Heiser, vice president; Elvin Wilson, second vice president; Marvin Crites, secretary; Ernie Swihart, treasurer; Mr. Brandt, advisor; Manuel Kwon, exchange student.

C A M P U S C L U B S



Inset: Kuns, Pres. Top row: Kwon, Wine, Shick, Lehman, Baer, Hamann, Saylor, Forney, Kuns, Gillingwaters, Kercher, Horning, Stover, Shepp, Hylton, Hollinger, Snell. First row: Strate, Blickenstaff, Eisan, Rothrock, Flory, Heisey.

Chi Delta Chi

● Chi Delta Chi has completed successfully the third year of its existence. Carrying to new heights its purpose of forwarding dramatic activities in the college, the club produced as its annual three-act play an interesting comedy entitled "Once there was a Princess" under the able direction of Ruth Rothrock. During the first semester three new members were elected. They were duly installed at a unique Hallowe'en party. At the close of the second semester the club again elected to membership ten new members who had previously demonstrated their dramatic ability by appearing in other productions. The evening designated as formal initiation night was spent in attending a clever play in a Hollywood theater and eating pineapple upside down cake at the home of one of the members in Pasadena. The club is justly proud of the representation its members have made by their participation in other productions and in the service they have rendered to the school for the activities mark them as being all-around students. A select membership is necessarily the rule and consequently the opportunity to join is valued highly. The officers who have been instrumental in the success of the club this past year have been Opal Kuns, John Heiser, Evelyn Wine, Wilson Gillingwaters, and Eleanor Shepp. They have served in the capacities of president, vice president, secretary, treasurer, and membership chairman respectively.

B S C A M P U S C L U B S



Helen Heisey

Top row: Heffner, Cox, Holsinger, Kennedy. Second row from bottom: Coffmann, Shepp, Lauver, Muir, Strobach. First row from bottom: Messamer, Shafford. First row: Shaffer, McReynolds, Heisey, Samson, Flory. Inset: Heisey, Pres.

Handwritten notes:
 Messamer
 McReynolds

Miller Hall

● Blessed with a congenial group of girls, a huge fireplace, cozy rooms and a fun-loving matron, it was not strange that Miller Hall should have had a pleasantly successful season. One of the best surprises which the girls received upon moving into the dormitory at the beginning of the year was the fact that the building had been freshly renovated. Not long afterward they were again surprised with a handsome new set of overstuffed. The first business which concerned the group was organization. Opal Kuns was elected president, Helen Heisey vice president, Hester Cox secretary, and Betty Shaffer treasurer. But at the beginning of the second semester, when Miss Kuns, because of a change of residence was unable to look after the duties of president, the group chose Helen Heisey to serve in that capacity. The social program was varied and complete. Among the outstanding successes were a weird Hallowe'en party, at which even the men guests felt their hair standing on end, and a unique "8 party" to which the faculty was invited. Both were two of the biggest hits of the season. Other favorite memories include a wienie bake, marshmallow parties around the fireplace, Sunday afternoon teas, and slumber parties. Miller Hall is the only dormitory on the campus, but it serves to unite the girls and furnish that phase of college life without which the institution would be lacking.

C A M P U S C L U B S



Inset: Pres. Beckner. Brubaker, Beckner, Lehmer, Dresher, Vaniman, Dickey, and Butterbaugh.

Alumni Association

● The Alumni Association again extends greetings and good wishes to her Alma Mater, to the administration, and to the student body. The alumni members are a part of the institution. They are happy in the successes and achievements of the students each year and especially in the athletic honors which the Leopard teams have won this season. Each achievement of the administration and of the student body is looked upon proudly by them. They are willing and eager to cooperate at every opportunity. The fact that many of the graduates are frequently seen visiting their Alma Mater is evidence of their continued interest in her success. And so it is with a great deal of pleasure that the Association pledges her loyalty and interest as new fields are entered and greater undertakings are accomplished. The following data may be of interest: Graduates with A.B. degree, 298; Academy graduates, only, 145; Graduates of both college and academy, 87; Special music graduates, 3; B. S. L. degree, 1; Total exclusive of duplicates, 447; What the college graduates are doing: Teaching profession, 159; Other professions, 86; Pursuing advanced study, 19; Miscellaneous, 29; Deceased, 5. The Board of Directors of the Association includes Howard B. Beckner, President, Monrovia; Ethel Dresher, Secretary-Treasurer, La Verne; Levi H. Dickey, Chino; Glenn G. Vaniman, Kingsburg; Mark D. Lehmer, Los Angeles; Myrtice Butterbaugh, La Verne; and Mrs. Marie Brubaker, Covina.

*Sincerely,
Evelyn Deardorff*

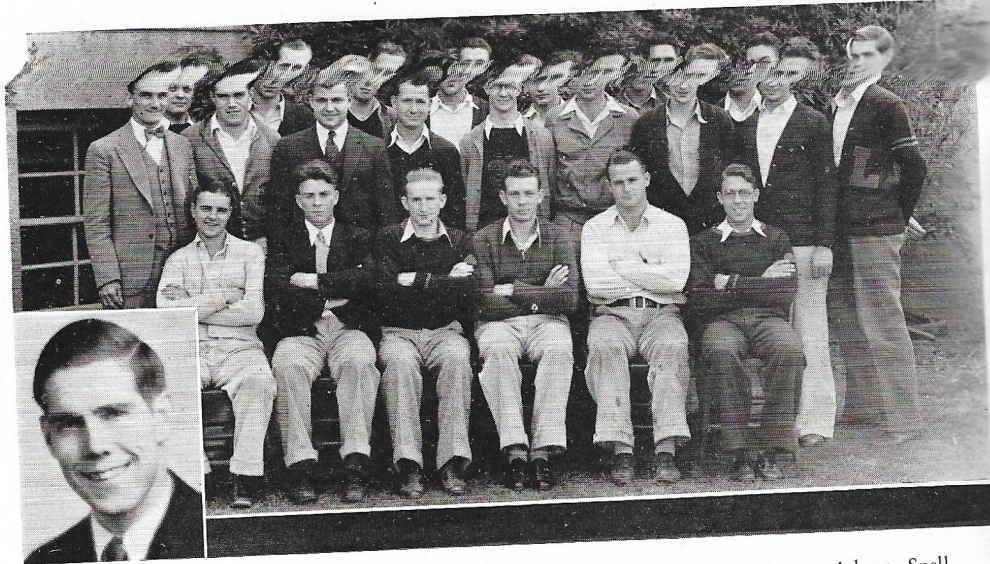


Holl, Hamann, Deardorff, Ardinger, Heckman, and Deardorff, Pres.

Student Volunteers

● This year has brought varied experiences to the Student Volunteer group which, though small, was very cooperative and faithful. The programs have been varied. Some have been devotional, some social, but the main interest has been in relation to missions, foreign relations, prayer, and personal consecration. The officers, who have worked hard and faithfully, are president, Evelyn Deardorff; vice-president, Mary Lauver first semester and Royal Glick second semester; secretary, Hazel Kennedy; treasurer, Gwendolyn Ardinger; music director, Fred Brunk; and faculty advisor, Dr. Emmert. The organization felt a great loss and was bowed in sorrow when their faithful friend, constant help, and wonderful advisor, Dr. J. B. Emmert was taken from them. The deputation team was sent to the Northern California district as has been the custom. The group consisted of a mixed quartet composed of Evelyn Deardorff, soprano, Gwendolyn Ardinger, alto, Elmo Holl, tenor, and Vernon Heckman, bass. The reader and violin soloist was Maurine Hamann. This group made many friends and had many pleasant experiences during this trip. A different plan was instituted by the organization this year, that of returning to the district mission board all money received in offerings outside of bare traveling expenses. The aims have been to bring Christ to L. V. C. campus and to fulfill the religious needs of the students.

C A M P U S C L U B S



*Inset: Snell, Pres. Top row: Swihart, Calvert, Nordstrum, Forney, Bessey, Carter, Adams, Snell.
 Second row: Glick, Noll, Stover, Heiser, White, Hylton, Holl, Myer.
 First row: Rothrock, Baer, Holl, Montgomery, Brooks, Wilson.*

Varsity Club

● The newest organization in La Verne College was organized March 27. This organization is composed of the varsity lettermen in attendance at La Verne College and should not be confused with the alumni varsity club. It became evident that students did not join the alumni organization mainly because of financial reasons. Therefore, upon the suggestion of Coaches Lee Eisan and Dale Glick, a meeting was called March 27, at which time the new Varsity Club was formed with "Chuck" Snell elected as president, Fred Kercher as vice president and Sam Rothrock as secretary-treasurer. The club decided to meet for dinner the third Monday of each school month. Since the two clubs plan to work in conjunction, the new organization planned to hold joint meetings with the Alumni Club. The purposes of this organization are numerous: first, it will create a better understanding and friendship among fellows who have earned their letters in different sports; second, it aims to assure La Verne of even better sportsmanship in various intercollegiate games in the future; third, it is intended that through its activities and projects this club will interest high school students in La Verne College. Despite the comparative newness of the organization, interest and enthusiasm are running high. The fellows are learning to know each other in a different way. Altogether the club is filling that place where "something" was needed.

CAMPUS CLUBS

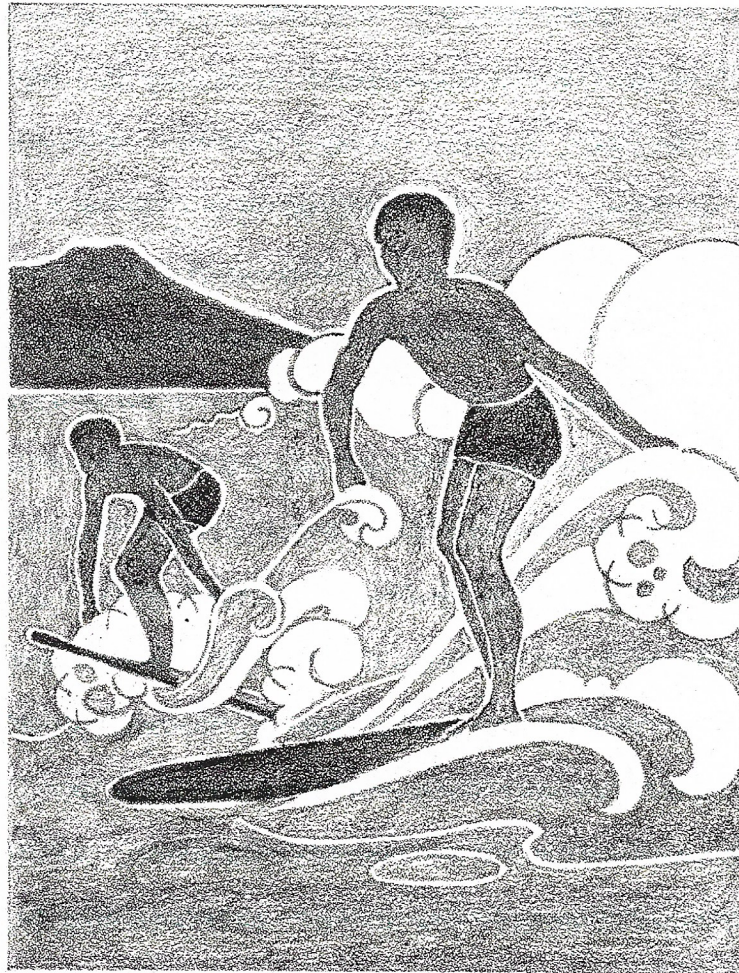


Rothrock, Shepp, Eisan, Ward, Perry, Kuns, Nix, and Shepp, Pres.

Women's Athletic Association

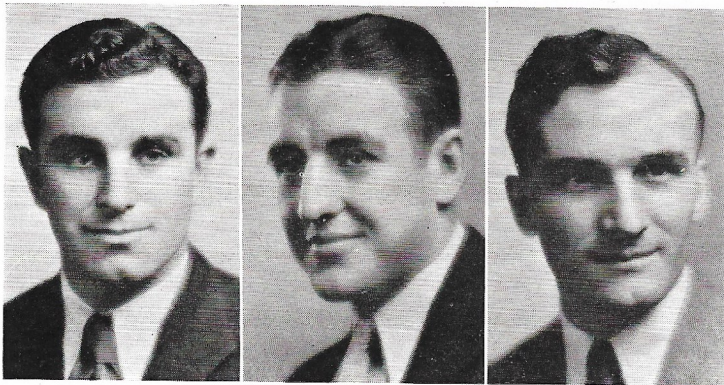
● The W. A. A. was organized in 1932 and for the past two years has been a vital part of school life. The main purpose of W. A. A. is to promote an interest in women's athletics and to arouse pep and enthusiasm around school. In order to be a member of W. A. A., a girl must earn in sports at least 25 points a semester. When she earns 500, a numeral is awarded her; and when she earns 1000 she is awarded a block "L". There are minor and major sports — the minor sports being volley ball, field ball, archery, track, swimming, and horse-back riding; the major sports are soccer, hockey, basketball, baseball, and tennis. These sports are coached and supervised by Phyllis Anderson. Every year the W. A. A. sponsors a La Verne College basketball team, which enters in the civic league, and even though they don't always win, the girls have lots of fun at practice and by the end of the season they are even an inch or two slimmer. At the end of each year a big banquet is held, and installation of new officers takes place. The W. A. A. is one of the peppiest organizations in school, and any girl who wants to belong to such a club is invited to become a member. The officers for the past year have been Eleanor Shepp, president; Edith Eisan, vice president; Opal Kuns, corresponding secretary; Grace Ward, recording secretary; and Ruth Rothrock, treasurer.

ATHLETICS



"Most spectacular of the sports of ancient royalty and of today is surfboating. Long intervals of waiting for the wave of waves . . . frantic, furious paddling to gain speed . . . breathless seconds while the combers grabble at the boards with fingers of foam . . . triumph as the powerful surf catches boards and riders, hurling them swiftly forward, tobogganing down rushing avalanches of water . . . arms outstretched, they ride the crested foam, and spray, balancing like ski racers, swift as eagles in flight to the waiting sands."

L A R R U P I N G L E O P A R D S



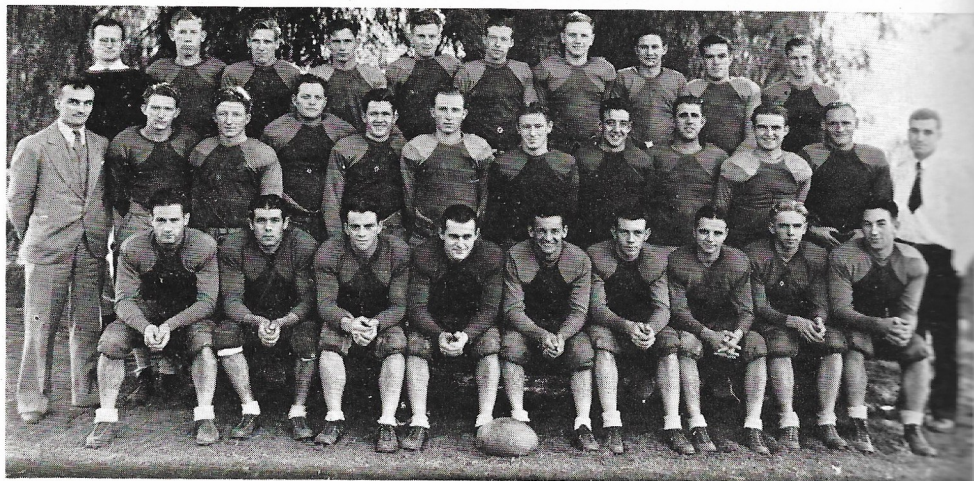
LEE EISAN,
Head Coach

MAX FORNEY,
Captain

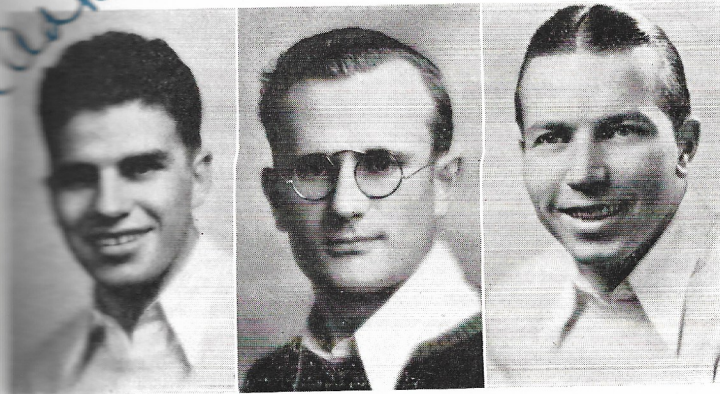
DALE GLICK,
Assistant Coach

● In the past football history of La Verne College there have been some very interesting facts. Three years ago Lee Eisan came to La Verne to take over the job of head of the Physical Education Department and Head Football Coach. That year La Verne had the best Frosh team in the Southern Conference. They defeated every team but Pomona and that was because Pomona wouldn't play them. That year the varsity won few, if any, games and no conference games. Last year they won half of the games played, one of them being a conference game—their first conference victory in four years. This last season, 1932, Coach Eisan tackled a tough schedule. Seven conference games and two others with Cal-Christian and Fresno State were played. The most successful and exciting grid season in the history of La Verne College resulted. The Leopards won two-thirds of all games played! They won five out of seven conference games! They made 126 points to their opponents 81! And they placed second in the Southern Conference! This remarkable accomplishment at La Verne has come after three years of coaching by our fine coach, Lee Eisan. Next year the Leopards have a fine chance to annex the Southern Conference crown. Coach Eisan will have 12 returning lettermen around which to build his team. Come on Leopards—here's to a bigger and better season next year.

Handwritten signature or initials.



L A R R U P I N G L E O P A R D S



AL ADKISSON,
Assist. Yell Leader

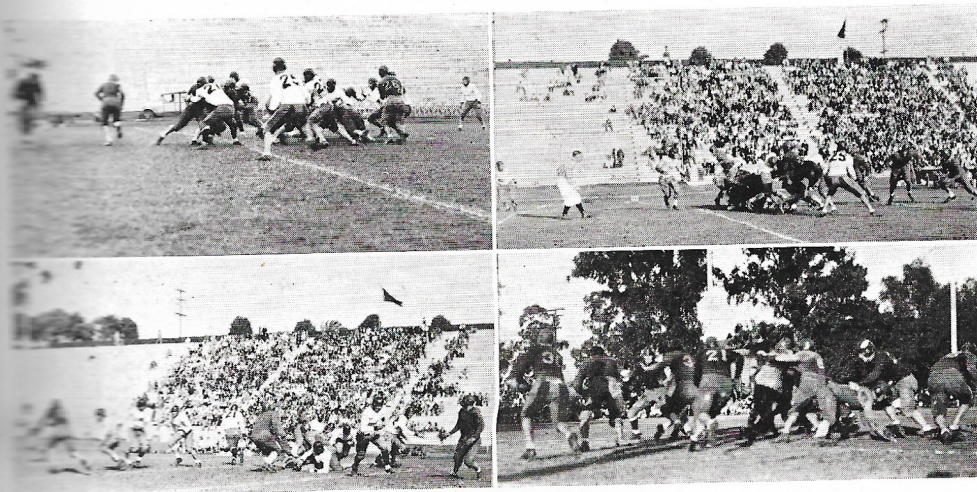
SIDNEY HUNTER,
Head Manager

ELBERT EBERSOLE,
Head Yell Leader

The Leopards starting out their football season with a non-conference opponent, Cal-Christian, had things pretty much their own way, and won 25-6. Montgomery's 40 yard run back of a punt and Brook's consistent gains featured the contest. The next week, Cal-Tech, defending Champions were smothered 21-0. The victory cost us dear, however, as Lathrop was removed from the game with a broken wrist, after playing a while of a defensive game. He suffered the injury in the first quarter but continued to play till almost the end of the game. Capt. Forney, whose accurate kicking played no small part in the victory, was also removed from the game with a bad leg injury. Montgomery and Brooks again starred on offense, Red running back kicks for 20, 30 and 40 yard returns, while Cec was making 5 to 10 yards on every play. The whole line played well, with Wright and Calvert showing up especially.

In one of the most exciting games of the year, the Leopards then defeated the Aztecs, 15-12, the lead changing five times. Stern's defensive work and "Tuffy" Adam's sensational line bucks were the features of the contest, along with Brook's all around playing. Davis also played a good game.

The Leopards in action with San Diego and Redlands.



L A R R U P I N G L E O P A R D S

1932 SCHEDULE

La Verne	25	Cal-Christian	6
La Verne	21	Cal-Tech	0
La Verne	15	San Diego	12
La Verne	0	Whittier	13
La Verne	6	Pomona	0
La Verne	25	Redlands	20
La Verne	0	Fresno	6
La Verne	34	Santa Barbara	0
<hr/>		<hr/>	
Total L.V.	126	Opponents	81

Then came our first defeat before the largest crowd of spectators ever to witness a La Verne game. Pee-wee still unable to play and Max only in for a few minutes, the Leopards went down fighting to a superior Whittier team by the score of 13-0. Two fumbles and a blocked kick tell the story. Montgomery and Brooks shone on offense while Stern and "Tuffy" did a good job of backing up the line. In the line Heckman, Bessey, and Calvert showed up well. Elder also showed to good advantage while he was in there.

Then came the Leopard's one off game of the season. With Bessey, Forney, and Lathrop on the bench, the team seemed to have lost its defensive strength and was defeated 24-0 at the hands of Oxy. Montgomery was the only back who played up to par, while Noll and Wright in the line were the only men able to consistently make tackles.

Next came the civil war duel with Pomona. With Forney and Lathrop back in the game our team was strengthened defensively. We needed it as we were forced to hold four times with the ball inside our 10 yard line. Brooks played a whirlwind game on offense, while Lathrop and Forney stopped everything on defense. The whole line played well with Calvert, Noll and Wright being the shining lights. Our one march of the game resulted in a score which led to La Verne's first victory over Pomona in football by the slim margin of 6-0.

Redlands being stopped for no gain on a line buck.



L A R R U P I N G L E O P A R D S

1933 SCHEDULE

Sept. 29 L. V. vs. Santa Barbara there
Nite.

Oct. 7 L. V. vs. Fresno there Nite.

Oct. 14 L. V. vs. Cal-Tech here Nite.

Oct. 21 L. V. vs. San Diego here Nite.

Oct. 28 L. V. vs. Marines at San Diego
Nite.

Nov. 4 Free.

Nov. 11 L. V. vs. Redlands there.

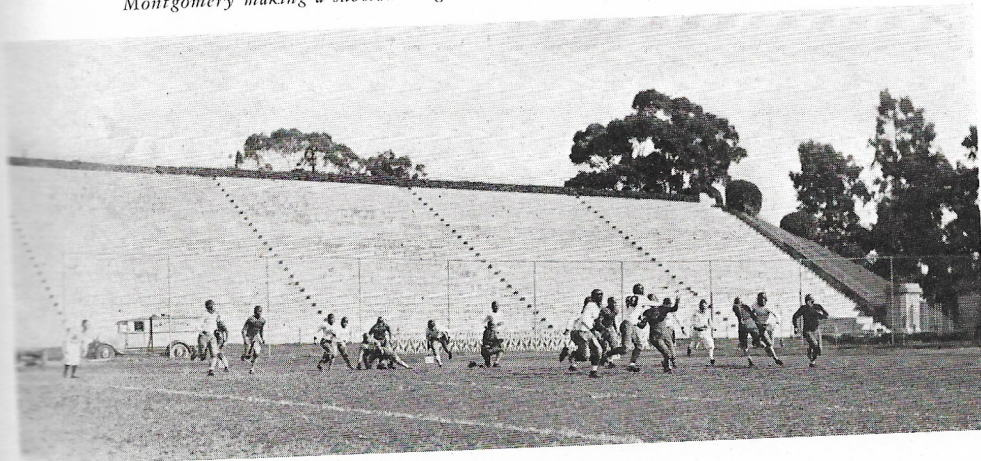
Nov. 18 L. V. vs. Whittier there.

● Armistice Day! A crowd of spectators and what a game! Lee started the second team and Redlands made two touchdowns in ten minutes. The first team went in and the fire-works started. (Were they mad!) They marched 53 yards to a first score. A long pass, Forney to Brooks, paved the way for the second, and the half ended 14-13 in favor of Redlands. By a bad break Redlands got the ball on La Verne's 34 yard line and from there scored. In the fourth quarter Bessey blocked a punt and Kercher recovered and ran for a touchdown. We failed to convert and the score was Redlands 20, La Verne 19. With two minutes left to go, however, Elder faded back and threw a long pass to Brooks who caught it and La Verne had won 25-20. Calvert, Noll, and Kercher, Wright, and Bessey played wonderful ball, as did Brooks, Elder, Montgomery and Lathrop.

La Verne was nosed out 6-0 in a non-conference game against Fresno State after a hard battle. Bessey was the outstanding linesman of the game.

La Verne next decisively defeated Santa Barbara in the final game to cinch second place in the conference. Forney and Lathrop starred in their last game, as did Heckman and O'Hanesian in the line. Montgomery and Brooks again put on a ball packing exhibition, while Calvert, Wright and Kercher also shone on both offense and defense. Adams and Elder also served notice that they will be hard to stop, while Kelly, though only in for a short time, caught a spectacular pass from Forney to score the last touchdown of the season.

Montgomery making a substantial gain on a weak side play against San Diego.

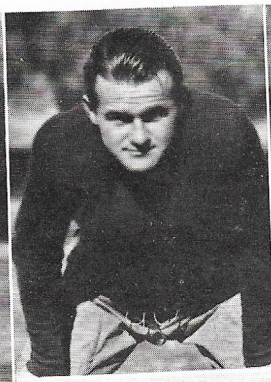


Frank Elder

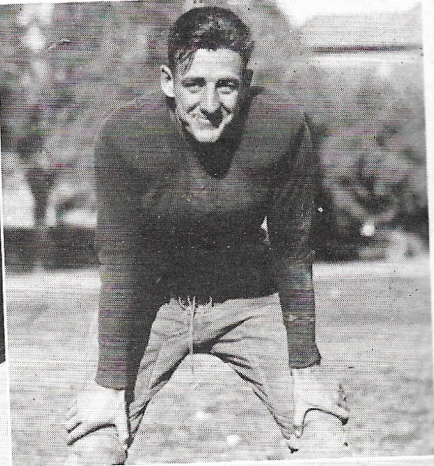
ARRUPING LEOPARDS



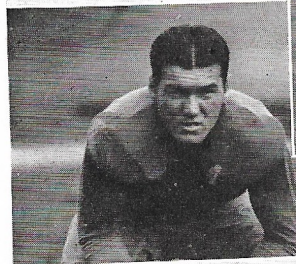
FRANKIE ELDER, Q
Full of fight



CECIL BROOKS, H.
line crasher



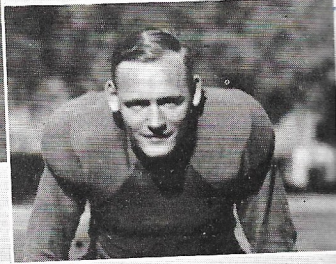
MAX FORNEY, H.
capable captain



PEE-WEE LATHROP, F.
stonewall



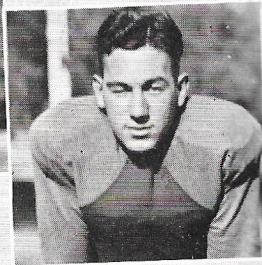
ED OHANESIAN, G.
knocks 'em down



HAROLD STERN, F.
pinch-hitter



ADE WRIGHT, E.
stellar wingman



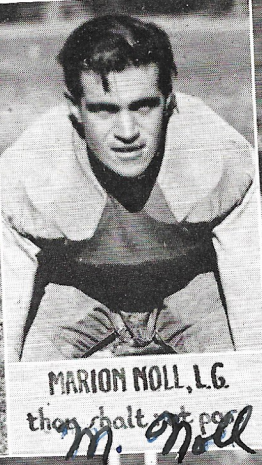
TUFFY ADAMS, F.
dangerous double

● "Red" Montgomery received unanimous choice for All-conference quarterback. "Red" always chose his play well and was plenty good on returning punts. Aubrey Calvert, center, and Cecil Brooks, half, tied with Warren of San Diego, and "Tuffy" Reed of Oxy for their respective positions. These three fellows who made All-conference selection were given gold medals donated by Coach Lee Eisan and Ony Leonard, who this year began this award as an annual presentation. "Cal", next year's captain, is a steady player, while Brooks is always an offensive threat. Forney, Lathrop, Wright and Noll all received honorable mention for their playing. Besides these fellows who were honored by the coaches, there were others deserving praise. Kercher at end, consistent and reliable; Sammy, hard to take off his feet and fighting always; Nordstrum, his first year on the varsity, but a cool and steady player; Stowell, brilliant at times and hard to take out; Swihart, one of the hardest linesmen in the conference to take out of play; Bessey, who would have been the outstanding guard in the league had he not been needed at tackle early in the season; Baer, one of the best offensive linesmen in the conference. In our backfield we had Elder, Adams and Kelly, three backs who showed great promise and will cut a wide mark in the conference next fall, Adams and Elder being triple threat men of no little ability.

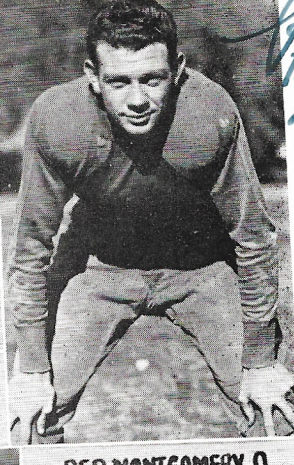
LAVERNE TRUPING LEOPARDS



CAL CALVERT, C.
captain elect



MARION NOLL, L.G.
then halt not pos
M. Noll



RED MONTGOMERY, Q.
red the wrecker

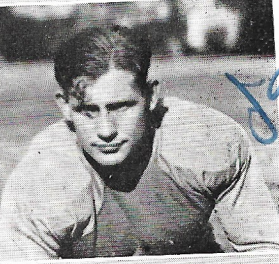
"Red" Montgomery



VERNON HECKMAN, G.
hard hitter



SAM ROTHROCK, E.
a mite of fight

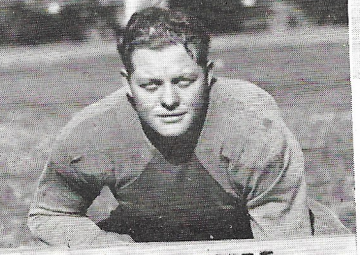


JAY BESSEY, T.
wild-cat

Jay Bessey



ED BAER, G.
his to defend



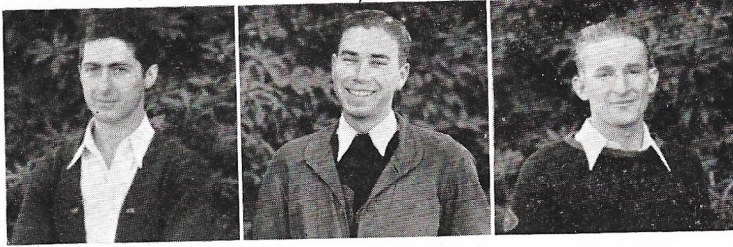
ERNIE SWIHART, T.
tough tackler

E. Swihart
Slendale
avz

● On Thanksgiving Day, seven men made their football "swan song". Max Forney, Captain of the 1932 Varsity, will be remembered for his aggressive leadership, his blocking and punting, and his passing ability which made the "air attack" of La Verne so dangerous. Pee-Wee Lathrop had an uncanny ability for finding the "hole" on the defense and "hitting the line" on the offense. Ability, plus consistent hard work, developed Vernon Heckman into a guard that makes coaches wish graduation didn't come so soon. "Shorty" Howell, handicapped by injuries his first two seasons, passed and carried the ball with the best of them in 1932. A back injury from last year kept Dan Stover from coming out to practice until the Whittier game. Then in two weeks he wrenched his knee and he was "out" the rest of the season. It was hard to take, for this was to be his best season. Ed O'Hanesian played consistent good ball this year and leaves a place in the line hard to fill. After the San Diego game Harold Stern found his place, and from then on the harder the hitting the better he liked it. As they go we say, "Hail and fare-well."

BATTLIN BASKETEERS

Dayton Stutzman

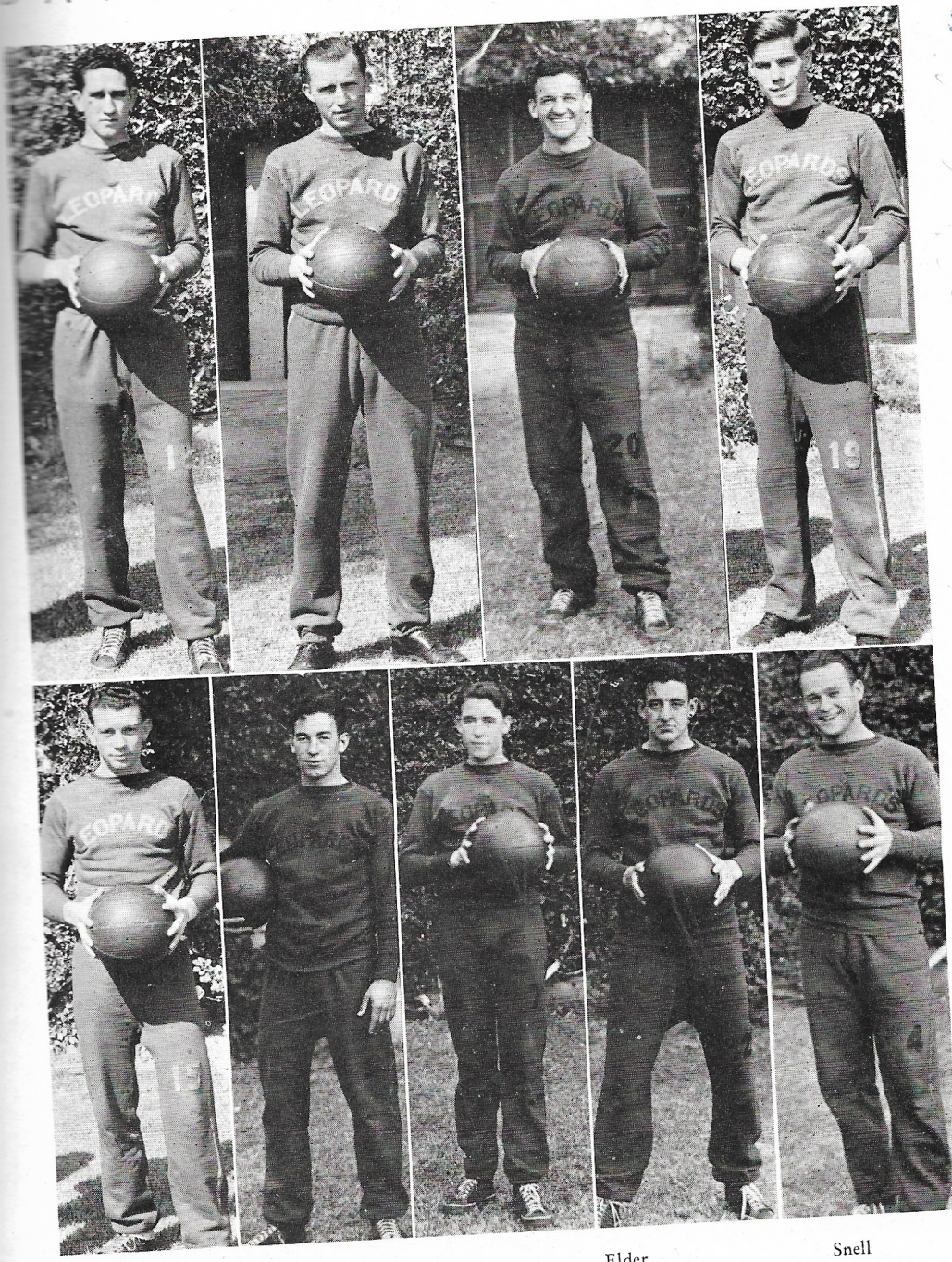


MERLIN EISENBISE
DAYTON STUTZMAN
ELLIS HOLL

● The Leopards came through a successful season of basketball and emerged from a hectic conference scramble sitting on the third place roost, sharing it with San Diego and Redlands. Completing a long conference schedule of twelve games, the Leopard basketball team ambled home to their lair with six wins, while the same number of defeats can be accounted for only by the frowning face of Lady Luck. However, the fact remains that Coach Lee Eisan turned out a bunch of players who were scrapping until the final gun, much to the worry of their opponents. After a pre-season schedule with some of the strongest teams in the Southwest, U.C.L.A.—which game ended with a close score—Arizona, Cal-Christian, and Hancock Oil, the Leopards started their conference schedule by splitting a two-game series with Oxy. The first game was won by La Verne with a 43-37 score. Oxy came back strong the following week and took a closely fought contest by a 25-24 count. The next victims of the Leopards were Pomona, who went down under a 30-27 score in which game La Verne maintained a consistent lead, and Santa Barbara State, who lost a two-game series 37-36, and 47-27. Redlands provided a hot overtime game on the home court which La Verne won, 32-30. The next night on their own court, Redlands was able to turn the tables in a fast game and win by a two-point margin but only after cutting down the threatening eight-point lead of the Leopards and receiving a rather serious scare.



BATTLING BASKETEERS



Charles Smith

Carter
Montgomery

Calvert
Adams

Wilson

Elder
Forney

Snell
Brooks

B A T T L I N G B A S K E T E E R S

● Unable to withstand the fierce onslaught of the conference champs, Whittier, the Leopards went down fighting in a pair of encounters. The following week, innocent Cal Tech was the victim of pent-up rage and received a 40-5 drubbing. Rounding off their schedule the Leopards lost two to San Diego, 35-34 and 43-33. The Leopards showed their superiority throughout, but tough luck kept them from winning. The Leopards had kept the lead in the first game until the last few minutes of play. The starting lineup usually found Cap. Snell and Carter at forwards, Elder at center, and Kercher and Forney at guards. Adams and Calvert also saw plenty of action. Capt. Snell played a consistent game at forward, much to the anguish of opposing guards. He was a close second in squad scoring, being outranked only by Carter. Carter not only was high scorer for La Verne, but also for the Conference. Frankie Elder, the flashiest player in the Conference, frequently brought the stands to their feet by his spectacular dribbling. Forney, who also jumped center, Kercher, Adams, and Bessey could always be counted on for an excellent game at guard. Wilson, Montgomery, and Brooks contributed to the forward positions. Stutzman and Calvert were consistent players at either center or forward. Carter was placed at All-Conference forward and Snell, Forney, and Elder received honorable mention. The only men to be lost by graduation are Snell, Forney, and Wilson. This loss will be greatly felt, but with a splendid nucleus to build on, Coach Eisan will turn out another excellent team next year.

BASKETBALL

Jan. 28 LVC (43) vs. Occidental (37) at Eagle Rock
 Feb. 4 LVC (24) vs. Occidental (25) at La Verne
 Feb. 11 LVC (30) vs. Pomona (27) at La Verne
 Feb. 17 LVC (37) vs. Santa Barbara (36) at Santa Barbara
 Feb. 18 LVC (47) vs. Santa Barbara (27) at Santa Barbara
 Feb. 24 LVC (32) vs. Redlands (30) at La Verne (overtime)
 Feb. 25 LVC (27) vs. Redlands (29) at Redlands
 March 3 LVC (32) vs. Whittier (40) at Whittier
 March 4 LVC (24) vs. Whittier (33) at La Verne
 March 11 LVC (40) vs. Cal-Tech (5) at La Verne
 March 17 LVC (34) vs. San Diego (35) at San Diego
 March 18 LVC (33) vs. San Diego (43) at San Diego

NUMBER OF POINTS PER GAME

	O.	O.	P.	S.B.	S.B.	R.	R.	WH.	WH.	C.T.	S.D.	S.D.	Tot.
Forney - - -	2	2	2	1	12	4	2	3	5	2	2	2	39
Snell - - -	17	7	11	11	13	10	8	5	7	7	5	6	107
Elder - - -	2	0	0	0	2	2	3	6	4	0	11	2	32
Carter - - -	11	14	12	12	14	13	12	18	1	12	12	13	144
Adams - - -	1	0	0	2	2	1	0	0	0	3	1	0	10
Kercher - - -	0	1	0	0	0	1	0	0	4	6	2	0	14
Montgomery -		0		0						3	0		3
Brooks - - -	0	0			2			0		0		2	4
Calvert - - -	10	0	5	9	0	1	2	0	2	7	1	7	44
Stutzman - -				2	2			0	1	0		2	7
Bessey - - -					0					0		0	0
Wilson - - -	0			0			0			0	0	0	0

A R O U N D T H E B A S E S

● Baseball was reinstated this year as a conference sport after being officially dropped last year by conference officials. Financial difficulties and lack of interest have prevented Southern Conference nines from scheduling all member teams, but La Verne has played a fairly representative schedule. Since baseball was not abandoned last year at La Verne, an experienced squad turned out to Coach Dale Glick. The time for practice was rather short due to the lateness of the basketball season, but numerous practice games were scheduled. Pee Wee Lathrop, the outstanding catcher in the conference; Martie Carter, shortstop; Marvin Crites, centerfield; Red Montgomery, second-base; Max Forney, left field; Kelly and Calvert, third base; Saylor and Elder, pitchers; formed the nucleus around which Coach Glick has moulded this year's nine. Two Jaysee transfers, Adrian Wright at first base and Fred Kercher, pitcher and first base, have added materially to the strength of the squad. In practice games with Pomona J. C., Chaffey J. C., Alumni, Bonita High School, and Pomona High School, the team showed considerable batting power and fielding ability. The Leopard nine opened its Conference season against Oxy and lost by a score of 14-3, largely due to errors. They then lost to Whittier in a close contest by a score of 5-1, and were barely nosed out by Redlands 6-5. The team then went on a hitting spree to defeat Santa Barbara 14-7. In a return game with Redlands we again lost 4-3. Whittier played air-tight ball in their return game to win 8-3. As our pitching had been a little erratic at times, Coach Glick had been on the lookout for a pitcher, and finally found one in Wright who aided by good hitting from the team won our second Conference victory of the season by defeating Pomona 12-4. In a return game we were nosed out in the last of the ninth inning and lost 5-4. Captain Lathrop was forced to watch this game from the sidelines with an infected arm.

We had a hard hitting crew, the team average being .3029. Crites led the bunch with .429; Pee-wee had .380; and Calvert and Wright were third and fourth with .322 and .312, respectively. We had a good fielding outfit. Although a little erratic at times, with a little more luck we would have finished high up in the win column. The prospects look bright for a good team next year as only Captain Lathrop and Max Forney will be missing, and while their loss will be keenly felt, it is hoped that the team will be strengthened by transfers and frosh. Sam Rothrock was the team manager and proved to be a good one, keeping the fellows posted as to their fielding and batting averages.



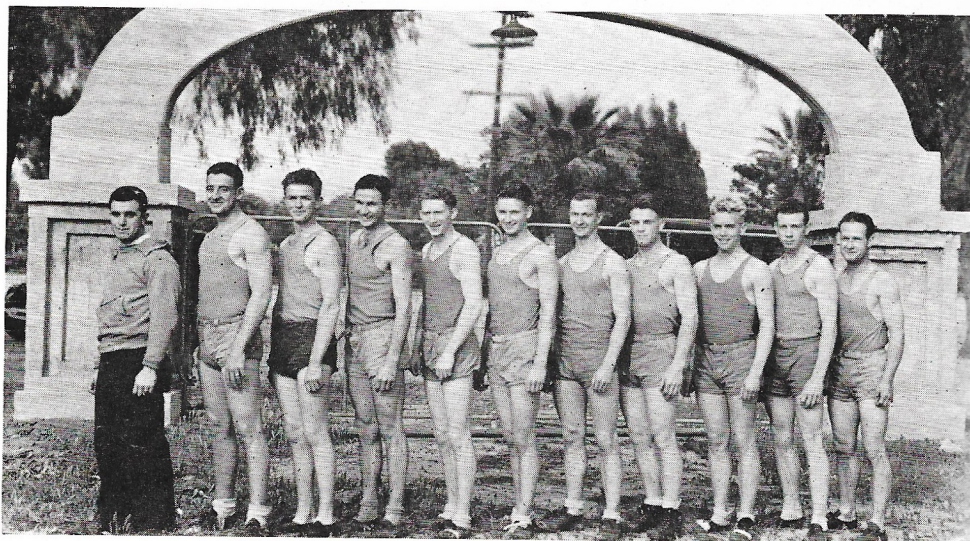
T O R R I D T R A C K S T E R S

● La Verne for the first time in a number of years had a full fledged track team. We had three conference dual meets, two with Whittier and one with Redlands. We also had one meet with Pomona Jaysee and entered several men in the all-conference meet. To start the season an interclass meet was held in which the Sophs won with $55\frac{1}{2}$ points. The Juniors were next with $33\frac{1}{2}$. The Seniors trailed with 11 and the Frosh ended in last place with 4 points. Hylton, White, Forney, Adams and Myers were the high point men of the meet.

We lost our first meet to Whittier by a score of 106-25. The day before the meet Red sprained his ankle and was unable to take part. Myers and Hylton were La Verne stars, Myers winning the mile and 2 mile, and Hylton tying for first in the high jump and taking third in the pole vault. Forney, Adams and Kelley also took points for La Verne. The next meet was a close one with P. J. C. coming out $72\frac{1}{3}$ to $58\frac{2}{3}$. Hylton, Myers, Forney and Adams were the high point men of the meet, Hylton winning the 100, 220, and taking second in the high jump, and pole vault, and third in the broad jump. Myers won the 880, mile and 2 mile to pull off an iron man start while Forney won the discus and took second in the shot. Adams won the javelin and took third in shot and discus. Next came a triangular meet and two dual meets all rolled in one with Redlands and Whittier. In the triangular meet Forney won the shot and placed in the 100, 220 and high jump. Myers had to be content with fourth although his time of 10.35 in the 2 mile was his best this year, while Holl took third in the 880.

Considering it as a dual meet with Redlands, Hylton placed second in the 100, 220 and third in the broad jump. Forney won the shot and discus and took second in the hammer throw. Holl took second in the 880 and third in the low hurdles, while Myers took third in the mile. White took second in the low hurdles and third in the 440, while Harshbarger and Baer got a third apiece in the javelin and pole vault, respectively. As a second dual meet with Whittier we finished much as we did in the first meet.

Holl, Myers, Montgomery, Kelley and Forney were entered in the All-Conference meet, but Montgomery was the only one who placed, taking second in the broad jump with a leap of 22' 4". Hylton did not run, due to a bad knee. All in all while we did not win any meets we have a nucleus to build on next year, losing only Forney, and although his loss will be felt keenly we have several men who may develop and take his place.



T O R R I D T R A C K S T E R S

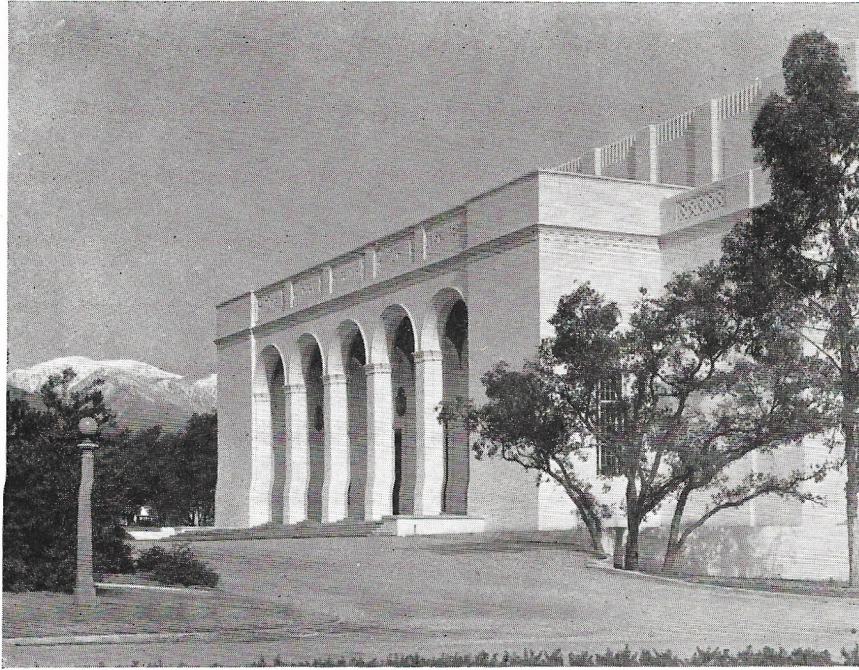
Track Results for Season of 1933

Name	Inter-class	Whittier	P.J.C.	Wh. Red. L.V.C.	Red.	All-Con.	CONF. TOT'L	TOT'L
Hylton - - -	19¼	5	18¼	6	7	---	18	55½
Montgomery - -	5	---	---	---	---	3	3	8
White - - -	12¼	0	2¼	3	5	---	8	22½
Wilson - - -	0	0	1¼	0	0	---	0	1¼
Forney - - -	10	4	8	11	13	0	28	46
Harshbarger - -	7	0	1	2	1	0	3	11
Adams - - -	13	4	7	---	---	---	4	24
Rothrock - - -	3	---	¾	---	---	---	0	3¾
Kelley - - -	5	2	3 7-12	---	---	0	2	10 7-12
Myers - - -	9¼	10	15	8	1	0	19	43¼
Holl - - -	---	0	---	3	4	0	7	7
Baer - - -	4	0	2	1	1	---	2	8
Brooks - - -	6	---	---	---	---	---	---	6
Stern - - -	1	---	---	---	---	---	---	1
Harris (incl.) -	4¼	---	---	---	---	---	---	4¼
Calvert - - -	1	---	---	---	---	---	---	1

--- Did not participate.

Interclass Rivalry

● During the past year at La Verne, interclass sports have played a prominent part among the activities of the students. They have been a means of sustaining that something which is vital to the life and progress of any student body — class spirit and rivalry. Interclass sports among the men have promoted these two qualities to a great advantage in that rivalry and spirit, though naturally aroused, are carried on in a sportsmanlike manner. Since the interclass contests are generally the first contests of the season in that respective sport, the coaches have a chance to view old material and to discover previously unknown prospects. The first contests of the year were in basketball. These games proved to be very exciting indeed. In the first round of play the sophomores were victorious over the seniors, and the juniors defeated the freshmen. After a torrid battle in the championship playoff, the sophomores finally emerged victorious over the juniors by a 30-28 score. The interclass contests in the track and field events were interesting. The sophomores and juniors again fought hard for top honors. The final score revealed that the sophomores had won first place, the juniors second, the seniors third, and the freshmen fourth. On beach day volley-ball contests were played between hastily organized teams on the sand. The juniors proved superior in this sport by defeating the seniors in the final playoff after the seniors had defeated the sophs. The annual interclass tennis tournament was played off in April, with Marti Carter winning a handsome award for first place and Ade Wright, runner-up. Although not strictly an interclass event, the seniors defeated the faculty, 6-3, in their annual horseshoe contest, thus regaining the cup lost to the faculty last year. Prof. Rutherford proved to be the best horseshoe player of the tournament.



Mabel Shaw Bridges Music Auditorium of Claremont
Colleges, a center of musical culture

Each year Claremont Colleges presents a series of concerts by famous artists. La Verne College has arranged for its students to attend these events for the academic year 1933-34 without charge beyond their tuition. This unusual opportunity is one which will be enjoyed by students enrolled in Claremont Colleges, Pomona College, Scripps College, and La Verne College.

La Verne Angelus Cut Rate Drug

"Where Your Money Goes Farther"

City Prices at Home

We Serve Beverly Dairies Ice Cream

2252 D Street Next to Farmers & Merchants Bank

Phone 2801

C. A. LEARN, *Manager*

Nearly all the midnight oil burned around here is gasoline.
Many an educational book has been swamped by a finger wave.

—○—

She: He was driven to his grave.
He: Sure he was; did you expect him to walk?

—○—

Frances Nix: I think I have a cold or something in my head.
Coach: Probably a cold.

COURT AUTO SERVICE

GOOD LUCK SENIORS

2023 3rd Street

DWIGHT W. SHIRK

Phone 1991

STOP 'N SHOP MARKET

La Verne's Quality Market

Stop and Shop with us and enjoy the difference in
Quality, Service and Price

The Home Town Independent Merchant Will Serve You Best

2335 D Street

La Verne, California

Bernie (to Cal.): What course are you going to graduate in?
Cal.: In the course of time.

—o—

RESULTS

Little lines of Latin
Little feet to scan
Make the mighty Virgil
And a crazy man.

LIONS



CLUB

Of La Verne

Dedicated to Community Service and Betterment

Our Slogan

L—iberty

I—ntelligence

O—ur

N—ations

S—afety

Pleasing Your Family with Your Photograph is More Than
Sentiment. They Want It

Make an Appointment With

**GILLESPIE
HARTSOOK STUDIO**

160 West Second Street
Phone Pomona 822

"Pomona Valley's Finest Studio"

Judge complains that many modern novels are an incentive to violent crime. Maybe that's why so many of our novelists live abroad.

—o—

Housewife: Look here, my man, why do you always come to my house to beg?

Tramp: Doctor's orders, madam.

Housewife: Doctor's orders?

Tramp: He told me that when I found the food that agreed with me, I should continue it.

Phone 1051

LA VERNE LUMBER COMPANY

R. J. DAHLEM, Manager

La Verne, Calif.

Everything in Sport Wear

Fishing Tackle
Golf, Tennis

ADAMS-GOODMAN, Inc.
SPORTING GOODS

ONY LEONARD, *Salesman*
161 East Second Street
Pomona, Calif.

Main Store
1041 South Broadway
Los Angeles, Calif.

THINGS THAT ANNOY TEACHERS

Question: Where did the Spenserian stanza get its name?

Answer: From Shakespeare.

Question: What was Milton's great affliction?

Answer: He was a poet.

Question: Where do the Pales live?

Answer: On the River Styn.

Question: Do you know Poe's "Raven?"

Answer: No, what's the matter with him?

Question: Where was Solomon's temple?

Answer: On the side of his head.

SPRING 1933
SPARKLING WITH COLOR
ALIVE WITH STYLE
THAT'S
JOHN P. EVANS
"Style Headquarters"
POMONA

All the News of La Verne College will be found in the

LA VERNE LEADER

If you are interested in the College Activities, in the Alumni,
in the progress of the college, subscribe for the Leader.

SPECIAL \$1.00 RATE TO JAN., 1934, TO NEW SUBSCRIBERS

La Verne Leader
Box 326, La Verne, California

Ulrich Knoch
Prop.

THE BOBETERIA

Where the Good Groceries Grow!

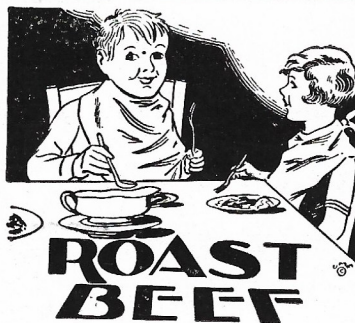
At Your Service for More Than a Quarter of a Century!

T. H. "BOB" WILLIAMS
Proprietor

MEAT DEPT.

JOHN KETELSEN, Proprietor

Choice Cuts of the Finest Meats



Capital—\$50,000

STRENGTH - SECURITY SERVICE

Back of the Farmers and Merchants Bank are financial resources large enough to meet any contingency, and a reputation for fair and courteous dealing that is a matter of common local knowledge.

We Invite Your Account



OFFICERS AND DIRECTORS

L. C. KLINZMAN	- - - - -	President
R. L. DAVIS	- - - - -	Vice-President
H. E. BELCHER	- - - - -	Vice-President
J. E. DAVIS	- - - - -	Cashier
ELLIS M. STUDEBAKER	STANLEY BARNES	
WALTER K. KRYDER	E. R. BLICKENSTAFF	
ARTHUR DURWARD		



The Farmers and Merchants Bank

of La Verne

COMMERCIAL

SAVINGS

**Van Dusen's Variety
and Electric**

We Aim to Please

LA VERNE
2326 D. Street Phone 2251

TODD & REEVES

Funeral Directors

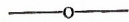
Ambulance Service

Lady Assistant

Phone Pomona 2861

Fifth and D Sts. La Verne

Miss Muir (to class) This examination will be conducted on the honor system.
Please take seats three apart and in alternate rows.



Girls are like final examinations—they keep a fellow up all night worrying about them, and then ask them foolish questions.

La Verne Drug Store

The Brightest Spot in Town

Cut Rate

Be sure and come in and sign our copy of the
Lambda and receive your usual gift.

Day Phone 1281
Night Phone 1283

G. H. HERR
Proprietor

Stetson Hats

Grayco Shirts
and Ties

JAMES D. EWART

CLOTHING and SHOES

362 West Second Street
Pomona, California

Griffon Clothing Peters Shoes

Pooley's Flower Shop

Flowers for all occasions

Member of Florist Telegraph
Delivery Association

Phone: Res. 8716, Office 1093

241 Thomas, Pomona, Calif.

Did you ever stop to think a telephone pole never hit a machine except in self-defense?

—o—

College Student: You told me to file these letters sir.

Boss: Yes.

College Student: Well, I was thinking it would be easier to trim them with a pair of scissors.

BELCHER'S SHOE STORE

Modern Shoe Repairing

D STREET

LA VERNE

EVERYBODY'S GARAGE

Where Conscience has a place

MakeUs Prove It On Anything Your Car Needs
Our Prices Prove Our Appreciation

B. L. BOHRER

Phone 1997

2043 Third St.

La Verne, Calif.

IT PAYS TO LOOK WELL !

Get the Ideal Haircut at

THE IDEAL BARBER SHOP

BERRY EPPERSON, Proprietor

Some men hold a good hand at bridge and some are more successful in the moonlight.

—o—

Brooks: What happened to that gate you and your girl used to swing on?
Pee-Wee: She gave it to me.

—o—

A peach came walking down the street;
She was more than passing fair;
A smile, a nod, a half closed eye,
And the peach became a pear.

—o—

The world's a very stupid thing,
It's lazy and it's slow.
The valleys lie, the prairies stretch,
The canyons yawn below.

La Verne Food Market

D Street

Geo. J. Beckman



Now showing the New 1933 line,—

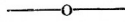
Let us serve you in Repairs and Parts

JOHN R. HUIE

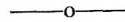
Phone 1941

La Verne

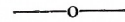
Dean Hoover: Who found today's lesson hard?
Betty S.: I didn't.
Dean Hoover: Why not?
Betty: I didn't study it.



Rutherford: Give an example of unskilled labor.
Arno Myers: A freshman making love.



Ede: The doctor looked at my tongue and said it didn't look the same as usual.
Max: Well, you probably held it still while he looked at it.



Jay: Do you send your shirts to the laundry?
Martie: No, I just wear them once and tear them up myself.

**CALIFORNIA TEACHERS' ASSOCIATION
PLACEMENT BUREAU**

Offers state-wide information concerning school positions.
Hundreds of Teachers Placed Annually.

California Teachers' Association
2163 Center Street
Berkeley, California
Telephone THornwall 5600

California Teachers' Association
307 California Reserve Bldg.
408 South Spring St.
Los Angeles, California
Telephone TRinity 1558

The Vogue Dry Cleaners and Home Laundry

See Us for Prices

We Call and Deliver

2125 Third Street

Phone 1276

La Verne

Prof. (to Frank Elder): Why are you so far behind in your studies?
Frank: So I can pursue them better.

—o—

Max (being arrested): But officer, I'm a student.
Officer: Ignorance is no excuse.

—o—

A petting party now and then
Is just what flunks the brightest men.

—o—

YOU HAVE TWO CHANCES

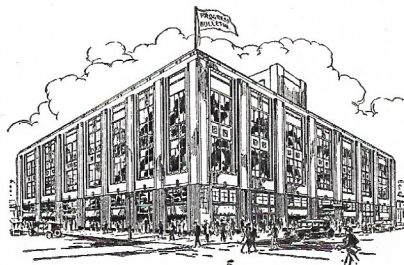
You have two chances
One of getting the germ,
And one of not.

And if you get the germ
You have two chances,
One of getting the disease
And one of not.

And if you get the disease
You have two chances,
One of dying
And one of not.

And if you die—Well you still have two chances.

PROGRESS - BULLETIN BUILDING



The home of "Pomona's Newspaper," and the Progress-Bulletin's modern printing plant.

MODERN IDEAS IN PRINTING

It takes more than mere type, ink and paper to produce attractive printing. It takes IDEAS!

AND—

MODERN PRINTING EQUIPMENT—
NEW TYPE FACES—EXPERIENCED CRAFTSMEN

This
Annual
is a
Progress-
Bulletin
Product

You'll find a happy combination of them all at the—

PROGRESS-BULLETIN
PRINTING DEPARTMENT

Broadway Costume Company

FRED CAVANAUGH & SON
Proprietors

525 South Broadway
Los Angeles, Calif.

Maurine (speaking of her home in the east): If you girls come back to the World Fair this summer, be sure to come and see me.

Evelyn Wine: What cage will you be in?

—○—

Prof. Brubaker (lecturing to his sleepy class) Another one of Mark Twain's novels is Pudding-Head-Wilson.

Elvin Wilson (waking up with a start): What?

—○—

"Immediately after marrying my daughter he borrowed \$2,500.00 from me."

"Did you get anything back?"

"Yes, my daughter."

—○—

Magazine runs a story on "How to Lay Out a Baseball Diamond." Most fans are more interested, however, in how to lay out an umpire.

J. A. McCLELLAN'S MEN'S SHOP

HIGH GRADE CLOTHING AND SHOES

For Men Who Dress Well

Up-to-date Cleaning and Pressing Establishment in Connection

2336 D Street

Phone 2417

Insure with
**Overholtzer's House of
Protection**

This protection includes many
items of *Service* that you do
not usually get with Insurance

"We insure against everything"

2118 3rd St., La Verne Ph. 1842

Compliments of
**CAP and GOWN
COMPANY
of California**

224 E. ELEVENTH ST.
LOS ANGELES, CALIFORNIA
Phone WESTMORE 3711

Lee (Commenting on Dale's marvelous fishing luck on Senior Ditch Day): The
only time I ever caught a fish was when I got married.

Dale: Pee-wee, you certainly sounded as if you were calling hogs last night in your
sleep.

Pee-wee: Did you answer me?

—o—
A fool there was, and he hitched his star
(even as you and I)
To a second hand bus all mud and tar—
We called it a joke that had gone too far
But the Fool, he called it his motor car,
(even as you and I).

ENGRAVING

again by

Commercial Art and Engraving Co.

417 EAST PICO
LOS ANGELES, CALIFORNIA

JACK CANNICOTT

Phone PROSPECT 4228

The La Verne Chamber of Commerce

Recognizes in our College, La Verne's leading asset. We are with you in every forward movement and congratulate ourselves on the type of Citizenship that the College attracts.

The La Verne Chamber of Commerce

"Not many people can do this," said the magician, as he turned his Ford into a lamp post.

—o—

"Have you ever been married?" asked the judge.

Yes," stammered the prisoner.

"To whom?"

"To a woman," answered the prisoner.

"Of course it was to a woman," snapped the judge. "Who ever heard of anyone marrying a man."

"I did, sir. My sister did," meekly replied the prisoner.

Peoria Life Insurance Company

MEN, WOMEN, CHILDREN

Policies for Every Need

S. J. MILLER

Phone 2242

2017 Fifth Street

La Verne, Calif.

SAFETY :: SERVICE :: SATISFACTION

The FIRST NATIONAL BANK

of La Verne

OFFICERS

L. E. CREE, *President*
W. S. ROMICK, *Vice-President*

D. G. ARBUTHNOT
R. S. BRYDON

J. C. GAPP

E. H. BOLY, *Cashier*
O. L. MARSHALL, *Assistant Cashier*

T. H. WILLIAMS
G. H. HERR

LA VERNE, CALIFORNIA

Dale: Bob, are you going to prove this formula for us?
Bob Crago: I hope so.

—o—
Judge (to Max): You didn't keep to the right of the white line. What will you
take—10 days or ten dollars?
Max: I'll take the money.

—o—
Prof. Brubaker: How do you like the Passing of Arthur?
Pee-Wee: What team did he play on?

PALM SERVICE STATION

Where You Can Get Your Car Serviced
From Stem to Stern

MARINE GASOLINE
and NATIONAL BATTERIES

Phone 2257

La Verne

Laughlin Hospital

Dr. Harry T. Laughlin

1225 NORTH PARK AVENUE

POMONA

Cummuter—A man who calls almost every evening at his own home.

Cec. (knocking at bedroom door): Eight o'clock! Eight o'clock!
Tuffy (sleepily): Did you? Better call a doctor.

Prof. Miller's Motto: "They shall not pass."

Do: Why do you call your dog Sandwich?
Dare: Because he's half bred.

"Here's where I lose a little ground," said Pee-Wee Lathrop of football fame, as he stepped under the shower.

CLUB PINS

Distinctive insignia for your society can be secured for a small cost. Write for designs or a new price on your present pin.

The T. V. ALLEN CO.

Makers of
PINS, RINGS, MEDALS,
ANNOUNCEMENTS
810-16 Maple Ave., Los Angeles

OUR COVERS

by

Henderson Cover Co.

Sam Babcock, Representative

443 S. San Pedro - Los Angeles

A
Gladys Solis
Ethel Lake
Lucile

Molly
Harold
Bob
Gertie
How
J.D.
Hill
Joe

A U T O G R A P H S

Edith Sallis
Estel Lake
Lucile ^{Francis}

Mary Heffner.

Edith Flannery
Mildred Brubaker
Hazel Palmer

Maurine Hamann.
Gladys Kittinger

Joy Cullen

Frances Miller

Molly Warrington

Sam Rothrock

Harold Hyfton

Jenny Handbarger

Bob Harris.

Ernest Bannister

Gertrude Leonard

Evelyn Cornister

Howard Nordstrom

Jack Singer

J. Ira Meyer.

Alta M^s Queen

Wilbur Clark.

Harold Arnold

Joe Leonard

A U T O G R A P H S

A

A U T O G R A P H S

A U T O G R A P H S

Aloha:

● The engraver, printer, have worked as writers. Shaffer, efficient. Arnold time given. Jack Ca long and other making your ex students of indes

POMO

JACK

Aloha:

● The write-ups are all in; the snaps have at last been collected and mounted; the engraver has untiringly done his share and now the Lambda is practically ready for the printer, except for one last word of acknowledgment and appreciation to those who have worked unceasingly to make the 1933 Lambda a success. To Helen Heisey, who as write-up editor has collected and proof read all the copy in the book; to Betty Shaffer, who has burned much midnight oil typing write-ups; to Harold Hylton for his efficient management in attempting to make the Lambda successful, financially, to Harold Arnold for his generous advice concerning minute technicalities; to Lee Eisan for his time given to insure a superior athletic section; to Roy Day, our printer representative, Jack Cannicott, engraver, and Sam Babcock, cover man, all three of whom have helped long and faithfully; to Mr. Gillespie, whose task was a particularly trying one; to all other members of the staff and everyone else who has contributed in any way to the making of this book, I am deeply grateful. May the 1933 Lambda not fall too short of your expectations and may it bring you into a closer relationship with your fellow students. And so, with a feeling of regret that my work is done intermingled with one of indescribable relief I say Aloha oe.

GRACE WARD, *Editor*

BUILDERS OF THIS BOOK

Printed by

POMONA PROGRESS-BULLETIN,

ROY DAY, *Representative*

* * *

Engraving by

COMMERCIAL ARTS
ENGRAVING CO.,

JACK CANNICOTT, *Representative*

Photography by

GILLESPIE'S HARTSOOK STUDIO,

GILLESPIE, *Representative*

* * *

Covers and Bindings by

HENDERSON COVER CO.,

SAM BABCOCK, *Representative*

A U T O G R A P H S

A

A · U T O G R A P H S

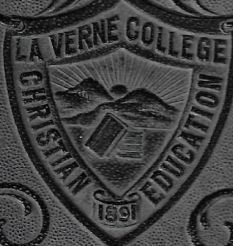


PAU

Which in Hawaiian, Means Finished



GAMBDA



1933