



W. C. T. U.

OFFICERS.

President. Miss Mary Robertson.  
 Vice President. Mrs. Edith Robbins  
 Reading Secretary. Mrs. Davis.  
 Corresponding Secretary. Mrs. C. Ensign.  
 Treasurer. Mrs. William Tucher.

The Boy that is wanted,

BY RUSSEL SAGE.

How can a boy succeed? I am often asked. Is it true, as many people contend, that all walks of life are overcrowded, and there is no place for the younger generation? I think not. I have in mind the sort of a boy that can succeed, and I say to all boys now, there is fame and fortune for them if they are made of the right sort of stuff.

The boy who is wanted in the office, the shop, the store, the bank-house in fact in any branch of mercantile or professional life, is the boy who is not afraid to work, who is educated gentlemanly, polite, neat in dress, honest, trustful, and self-respecting. Such lads are in demand everywhere. They are sought for with eagerness, and, when found, employers delight in pushing them forward, in opening to them new fields of enterprise and usefulness, in making them their confidants, and finally taking them into partnership. Boys who are slovenly in attire who are stupid, uncivil, and who cannot be trusted, are to be had, but they are not likely to keep a position for any length of time. Employers do not want them.

The boy who is wanted must be educated. If his parents cannot afford to give him a high-school or college education, he must learn to study without the aid of a teacher, in the early morning before business begins, and in the evenings after business hours. It can no longer be truthfully said that an education is out of any one's reach. Our splendid school system, where one can study by day or in the evening, has put the priceless treasure of an education within the reach of all. The main thing, in the beginning, that I would impress upon boys is one of the great commandments, "Honor thy father and thy mother, that thy days may be long in the land which the Lord thy God giveth thee." The boy who respects his father and mother, who treats his brothers and sisters with loving-kindness, has laid a good foundation for a successful career. You will do as your parents tell you, and that certainly will be to study. Don't be in a hurry to get away from your school books. The cares and responsibilities of business life will come soon enough. Go to school as long as you can, and, remember every hour spent in study in your youth will be worth money to you in after life. Read good books—the Bible, above all. Make yourself acquainted with history.

Continued.

KINGSTON TRACT!

MAGNIFICENT FRUIT LAND AT \$100 PER ACRE, WITH WATER RIGHT,

The Kingston Tract is part of the famous Jurupa Ranch in San Bernardino county, and lies just north of the Santa Ana River, midway between Riverside and Chino.

The world-wide reputation of this section for orange growing needs no puffing, and parties in search of citrus land at bottom prices will not hesitate to buy in this Tract when once they see the land and surroundings.

The soil is a rich sandy loam, easily worked, and of a similar character to Riverside, the elevation being about the same.

The Chino factory is within easy distance—about six miles in a direct line. Parties will find some of this land well adapted for raising sugar beets.

Two inches of water will be deeded to every ten acres of land and an interest of a like proportion in the fifteen mile Irrigation Canal.

We are prepared to contract to set out land for non-residents and take care of it for three years at a small extra charge, so that persons now in business or otherwise occupied can reap the advantages of a growing orchard without the toil of tending the ranch themselves and know exactly what will be the cost.

First cost of land, at present price per acre.....\$100.00  
 80 orange trees, 2-year-old, budded, \$60.00

Planting out and care for first year, \$25.00

Care of orchard second year, \$12.50  
 " " " third " \$12.50

Actual cost of land in three years, set out with five year-old trees, per acre.....\$210.00

The price, now, is \$100 per acre but this low figure will only hold good for a short time as the Tract is rapidly being sold.

The terms are very liberal: One-half cash, balance in 10 years at 6% interest; or if purchasers prefer paying all cash 5% discount will be allowed on deferred payments.

Clubs or Colonies buying eighty acres or more will have special inducements and terms offered.

The Pomona and Elsinore Railroad is graded across the Kingston Tract, and will doubtless be in operation by the time the crops are ready for shipping.

For further particulars call on or address the SOUTHERN CALIFORNIAN, Lordsburg, California.

Town Lots and Acre Property

T. J. NAIR is the only legally authorized agents for the Pacific Land Improvement Company's lots in the town of Lordsburg.

For information relative to the best bargains in acre property in the country, (We also have some fine wheat and barley lands that can be had at from \$10 to \$40 per acre.)

Call at or address this office.

The Pomona Land and Water Company

HAVE PUT UPON THE MARKET THE

Monte Vista Tract,

Consisting of about 2000 acres, sub-divided into 10 and 20 acre tracts. These lands are for the most part specially adapted to ORANGE and LEMON culture; the soil being a gravelly loam, rich and deep. This is the most beautiful and best located tract in the valley. Special inducements made to actual settlers who will improve property purchased.

Descriptive pamphlets and maps sent on application.

Shaw & Palmer,

Sales Agt's, - - - Pomona, California.

CAPITAL \$100,000.

CASH PAID IN \$50,000.

PEOPLE'S BANK OF POMONA,

TRANSACTS BANKING BUSINESS IN ALL ITS BRANCHES.

Safe Deposit Vaults.

Secure your valuable papers against fire and burglars by renting a Safe Deposit Box—expense only \$3.00 to \$8.00 a year.

W. H. Dole, President.

John H. Dole, Cashier.

The Golden Gate Clothing House

20 Per Cent

Discount on Children's and Boy's

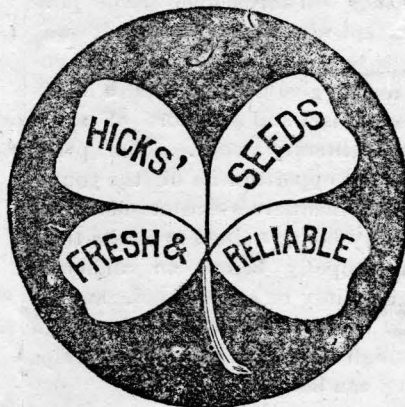
Clothing, AND ON MEN'S and BOY'S OVERCOATS.

ONE - PRICE - ONLY.

STEFFA & HILL

Second Street

Pomona, California.



CHAS. W. HICKS Seed MERCHANT,

DEALER IN

Everything for the Farm and Garden fresh and reliable, Seed Oats, Wheat, Barley and Corn,

UTAH ALFALFA SEED,

Seed Potatoes, Grass and Clover Seed. Bone-Meal and Nitrate of Soda.

No. 107 S. Main St.

Los Angeles, Calif.

Photographic Work. All Sizes And Styles

At Hardy's Parlors, Whipp Block, Main Street, Pomona Cal.,

One door north of First National Bank. First class work in every particular. J. Hardy, proprietor.

BOWYER & BARTLETT

DEALER IN

Staple - and - Fancy - Groceries. :-

Second and Ellen Str.,

POMONA, Cal.,

Howe's Dry Goods House POMONA.

A fine stock of Dress and Fancy Goods, Gents Furnishing, Blankets, Satchels, Trunks, Etc.—At lowest prices.

244

A. N. HARRIS Manager

**INDUSTRIAL.**

**MOTTO.**—The reward of industry is not alone in current coin, but also in an approved conscience.

**Poultry Raising for Farmers.**

There is an idea among farmers that keeping chickens don't pay. Among some it does not pay, but it is their own fault. They get a few common mixed breeds and turn them into the barn yard to take care of themselves; they fix up no comfortable roosting place, but let them roost on an old shed or on the fence. They do not make good nests; and in the spring no pains are taken to set, letting two or three set on one egg and one on twenty-five. The result is, they have one or two sickly chicks and in the end they have only a few old hens from which they get only a few eggs and so conclude they don't pay. But they do pay, if when starting the pains are taken to get a good rooster and several hens of good laying stock, build a suitable coop, or fix over an old shed water tight; give them plenty of yard room; arrange good nests, and when a hen wants to set, put her in a quiet place by herself. Take pains in everything and the results of this year's work will be thirty or forty young chicks which you can readily dispose of, if you don't care to keep them, at a price varying from twenty-five to fifty cents—a larger per cent on your investment than almost anything connected with both the farm or ranch.—Poultry Nation.

**How Many Varieties?**

Keep no more than can be kept well. A breeder who keeps but one variety may be otherwise engaged, so as to neglect it more than the breeder who keeps two or more, and makes poultry a thorough study and business. The number of varieties one keeps is no criterion by which to estimate the grade of his stock, more depends on skill, thorough management and application. We are not of those who believe no person capable of successfully keeping but one breed, and making a specialty of it. I believe one breed is all a great many people ought to keep, and more, too, while there are others who can keep a large variety and breed them all well. I hold there is no limit to man's capacity to acquire knowledge and develop the mind in any given direction. With ample room where poultry breeding is made a business and study, no one can afford to run one breed only, and no one breed will satisfy the desires or gratify the tastes of a mind large and active.

Cultivate in yourself the greatest patience, quietude and perseverance if you would insure success.

**Professional Cards.****W. M. Amos, M. D.**

PHYSICIAN and SURGEON,  
Having now located in LORDSBURG, respectfully tenders his professional services to the public.

Calls promptly attended to, either in town or country, day or night.

**R. R. Carrion.**

DEPUTY CONSTABLE,  
and Collecting Agent. Also Driving and Saddle Horses for sale.  
Office at: Lordsburg Post-office.

**Dr. A. C. Bryan****◀DENTIST▶**

EASTERN PRICES.

Room 2 and 3, Bartlett Block,  
POMONA CALIF.

**Dr. F F Little****◀DENTIST▶**

Gas administered for the painless extraction of teeth. Prices to correspond with services rendered. Office:  
Above THE NATIONAL BANK, ---POMONA.

**Dr. F. Garcelon**

PHYSICIAN and SURGEON,

Offers his professional services to the Citizens of Pomona and surrounding country.  
Office: Over Pierce's Drug Store, corner of Main and Second Streets. POMONA, Cal  
Calls in town or country answered promptly day or night.

Miss F. J. Hawkins. Mrs. Kate Fleming.

**Hawkins & Fleming.**

Successors to Miss L J Topliff.

Millinery and fancy goods.

Second St. Pomona, Cal.

**W. D. Morton**

JUSTICE OF THE PEACE; AND  
NOTARY PUBLIC.

Office Main Str., 2nd door north of  
First National Bank.

POMONA, CALIF.

**Wm. Cord**

NOTARY PUBLIC.

ROOM 20 WRIGHT BLOCK,  
POMONA, CALIF.

**KAN** When in Pomona visit McCOURT'S STATIONARY STORE,  
**KOO** on Second street, next to Miss Topliff's millinery and see his stock of Japanese fans, china-ware, mats, bamboo work, paper napkins, California ferns, moss, wild flowers, big tree wood curios, etc.,

**J E Patterson**

Successor to C. P. Johnson,

**UNDERTAKER**

Calls promptly attended day and night. - - - - - Pomona Cal.,

**J C Aston****Undertaker and**

Main St., North  
of Railroad  
POMONA, Cal., **Embalmer.**

**SMITH'S****Board & Lodging House,**

Corner Second and E Streets.

MRS. J. SMITH, PROPRIETRESS.

**HOLIDAY PRESENTS!**

A large and attractive stock of goods suitable for Holiday Presents, at lowest prices, at Browne & Co's, Pomona. Call and see them

**Brethren's Clothing.****Also, ; Regulation ; Hats,**

NOW ON HANDS We call the attention of the Colony to our stock of BRETHREN'S CLOTHING we have specially made. SUITS: \$16.50, \$18.00 and \$20.00. HATS for \$3.00 We also have a complete stock of OVERCOAT'S Underwear and boys Clothing. Popular prices, and strictly ONE price.

LONDON CLOTHING CO., Cor. Spring &amp; Temple St's., Los Angeles, Cal.

**◀ BROWN'S HOTEL ▶**

Neatly furnished and firstclass. Rates: \$1.25 to \$2.50 per day,

Flanders &amp; Bowman, Prop's \* \* \* \* Pomona, California.

**R. N LOUCKS,**

— DEALER IN—

**School** Crockery, Glassware, Lamps, Etc.,  
Cutterly, Notions, Gold pens, etc., **Supplies.**  
Corner Second and Gordon Sts., POMONA

At my store can also be found a large assortment of Books suitable for Holiday Presents, also Plush Goods, Toys, etc, Santa Claus' headquarters.

**S N PELTON**

HAS OPENED A STOCK OF

**HARNESS, SADDLERY, ROBES,**

BLANKETS, WHIPS and Horse Furnishing Goods. Special attention given to repairing. Second St, Opp. Peoples Store, Pomona, Cal.

**C. H. MARSHALL & Co.,**

— DEALERS IN—

**PAINTS, OILS, GLASS,**

WALL PAPER, VARNISHES, BRUSHES, PICTURE FRAMES  
AND MOULDINGS.

**All Kinds of Machine Oils,**

2-44

SECOND ST., POMONA CAL.,

**PHIL. STEIN,**

—DEALER IN—

**STUDEBAKER WAGON****MOLINE PLOWS, HARROWS, CULTIVATORS,**

FEED CUTTERS ETC., AT, LOS ANGELES PRICES.

Corner 2nd &amp; Garey Ave.

Pomona Cal.

**NEW STORE!****W. J. MELJOR**

—DEALER IN—

**FURNITURE, CARPETS,**

WINDOW SHADES and UNDERTAKING GOODS.

Goods delivered free.

Store opposite Post Office.

## SOUTHERN CALIFORNIAN

T. J. NAIR &amp; Co., Proprietors.

T. J. NAIR  
M. M. ESHELMAN } EDITORS.

## TERMS.

Single subscription one year..... \$1.00  
" " " six months..... 50

Lordsburg, Cal., Feb., 11, 1892.

THE country along the sea looks beautifully green.

THE country about Cucamonga is being very greatly improved.

ABOUT 10,000 acres will be planted to oranges and lemons this year in San Bernardino county.

LARGE quantities of land about North Ontario are being cleared and plowed preparatory for tree planting.

NEXT, the pretty California poppies on the hillsides all over Southern California.

PLANT your peach, pear, prune, plum, apricot, nectarine and other deciduous trees during this month.

A flower farm, for the manufacturing of oils and perfumery, is being opened on Baldwin's Rancho. A party from Grasse, France, is at the head of it.

THERE are fourteen-millions of people in Russia in a starving condition. Typhus fever has broken out among them.

THE Ontario Record of last week came out in fine form. It is a magnificent edition and may well be distributed as an educator.

TRAINS have been very much delayed recently over the Southern Pacific railway on account of washouts in Arizona and their trains have been coming in over the Santa Fe track to Colton.

THE rains continue to come gently and plentifully, and the country is greatly enriched and beautified. Though a large quantity of water has fallen, there have been no floods, for it has gone into the ground.

THE mountains are covered with a great amount of snow; this will insure an abundant supply of water for irrigation this summer. Providence has well arranged that storehouse for the people.

IT is certainly not to the credit of any man to accept favors from any one or even from a corporation and then ignore him and patronize the other fellow when he offers no better inducements. Selfishness is a terrible evil, and some professedly good men have their share of it.

PROGNOSTICATOR PECK, of El Monte predicts rain in Los Angeles county

the greater part of this year. The Express says: "It is safe to say that no rain will fall in Los Angeles county on the dates Peck names during June, July and August."

GENERAL Butler has published his auto-biography and it is so full of the spice of pugnaciousness that already six persons are arming themselves for assault upon it. Some lively scrimmages may be expected.

ALUMINUM is coming into use in the arts. It is now being used for the manufacture of sounding boards for pianos. A boat has been made of this material of the same size of a steel one and it is only half the weight of the latter.

TWO STORY cars are the latest invention, and are captivating every one by their elegance, beauty and convenience. There are four entrances, two on each side, and the upper deck is reached by four gentle-winding and ornamental stairways of seven steps each. Eighty passengers can ride in each car. These new coaches will likely become popular on all electrical railways.

SAN Diego, having been brought to a realizing sense of her defenseless condition through the Chilean imbroglio, has determined now to be fortified against any time of need. The idea is a good one, and we hope the authorities at Washington will see it in that light.—Times.

The San Francisco Chronicle advocates the proposition that the government take charge of all life insurance business in this country. Well, why not? The government can do the business without loss for a much lower rate than the companies now charge, thus saving to the people millions in money that is now going into the coffers of gigantic corporations.

THE papers of Southern California are quite unanimous in the idea that that the reduced rate on oranges to the East, limited to fifteen days, will prove anything but a blessing to our orange industry in the long run. That is our opinion, exactly. Our best oranges are not yet fit to market, and the immature and frost damaged fruit will be rushed in, to the detriment of the reputation of our fruit, and onto a market that will be glutted to such an extent that the price of the fruit will suffer, and the producer will gain nothing by the reduction in freight. If the railroads want to do a real handsome thing, let them continue the 90-cent rate sixty or ninety days. The Santa Fe leads out in that direction by extending its reduced rate to April 1st.—Champion.

SOUTHERN California has been enjoying the society of the International Press Association for a few days. The men and women of this association of editors and writers are the most accomplished representatives of American journalism. They are the men and women individually and collectively largely instrumental in the creation of American journalistic literature which today is the most potential

force in the civilized world for the correction of private and public wrongs, and for the advancement of knowledge intellectually, morally and socially betterment of mankind in general. Church, stage nor lecture is in no way comparable with the American Press in the evolution of the national welfare.

On May 9th 800 or 1000 people, members of the National Editorial Association will leave Chicago for Southern California, and these, too will come with pencils sharpened and minds full of brilliancy to weave the thoughts for the moulding of things intellectual.

## Active Work Needed.

The fight for this year's meeting of the National Editorial Association is ended. With a number of places in the field for the honor of the meeting, California won the prize despite the efforts of well organized and equipped committees. California received 28 votes out of 39 cast.

Now comes the work of making up the program for the visiting guests. The stopping places for the Association that have been decided upon are Coronado Beach, San Diego, Los Angeles, Redlands, Riverside, Fresno and San Francisco. At each place reception committees should be at once appointed from among the representative citizens. They should prepare a program of entertainment and submit it to Scipio Craig, Redlands, the executive committeeman for California, who has charge of that work.

There is no time to lose as the complete program must be in the hands of the National secretary by the first of March, that all delegates may be advised in time of their route and the time required for the trip.

It is desired to make this trip of the National Editorial Association one of instruction to them. No place will be visited which cannot convey some important lesson in the development of this great state. Agriculture, horticulture, floriculture, mining and all other branches of industry will be presented to them in their best development. The good to be derived will be incalculable. This coming excursion is composed of the men who speak direct to their constituents. Their statements will be read by millions of people, and then will be believed and relied upon.

We hope there will be no delay in this matter of programs and committees. There is no time to be lost. The program must be completed within this month. The excursion starts from Chicago on the 9th of May, and all delegates must be informed fully long enough before that time to make their preparations.

Get at the work.—Citrograph,

## State Citrus Fair.

The Chamber of Commerce calls attention to the opening of the State citrus fair in about one month, and to the beneficial results in the way of advertising through the newspapers and by the visits of the tourists. The managers of the fair are anxious to have the various sections all represented, and state that the fair

can be made a financial success only through the enthusiastic co-operation of all exhibitors in the effort to make the whole display a brilliant scene of beauty, which will arrest public attention and attract thousands of visitors.

The executive committees proposes to see that no charge shall be made for freight on the railroads, nor for cartage from the depot to the pavilion. Rough lumber for the construction of any design, and cheese-cloth and cambric sufficient for decoration purposes will be furnished without cost to exhibitors. In addition to all this, when the fair is over, fifty per cent of the net profits will be paid back to the localities exhibiting, to cover any expenses which they may have incurred. This gives the various localities a direct interest in the financial success of the fair.

The choice space will be allotted to those localities which are first to file with the general manager a definite proposition as to the quantity of fruit they propose to exhibit, together with something in the nature of a pledge that they will display it in a way to add to the artistic merit and general attractiveness of the entire fair. This does not mean the displaying of the fruit in any way that will retract from its dignity and worth. It does not mean the construction of any elaborate architectural design. The fair will be run primarily in the interest of the fruit grower, and every opportunity will be given him to make a satisfactory display of his best product, and to obtain from the judges a fair decision on its merits.—Citrograph.

## Want Competition.

At a meeting of the Traffic Association in San Francisco, Traffic Manager Leeds reported that he had a man at work making some comparisons between the freight rates of the Eastern lines and those of the Southern Pacific. Some of the comparisons compiled were read and produced rather a startling effect. It was shown that the rate on a certain class of freight from San Francisco to Tulare is as high as the rate on the same freight from St. Louis to Tulare.

The shippers were much interested in the showing thus made. An inquiry as to the expense of carrying freight on the Southern Pacific, as compared with the cost on Eastern lines, has resulted, so Mr. Leeds said, in the discovery of the fact that while coal costs the Southern Pacific more than it does the roads beyond the Mississippi, the wages paid to employes are no higher. The shippers had long been led to believe that the employes of the Southern Pacific were paid more than those of the Eastern roads.

A communication from the officers of a transcontinental line that is headed this way had been received by Mr. Leeds. That gentleman said he was not yet at liberty to disclose its contents, but that he would doubtless receive authority to do so in a few days. It is believed that this proposition is from the Santa Fe, and that it refers to the construction of the California and Nevada Railroad. This confirms more than ever of a new competing transcontinental line to San Francisco.

## HERE AND HEREBABOUTS

AGENTS wanted to take subscriptions for the SOUTHERN CALIFORNIAN.

NEW "add's" each week. Look them up.

Judge Newell of Pomona, was a visitor here Monday.

Eld. P. S. Myers of Los Angeles attended the California Conference.

Sam Fessler of Coyina attended the Dunkard District Conference in the college last Monday.

Mr. Wildman, our road overseer, is preparing to put the streets of Lordsburg in a fine condition.

W. K. Whitesell led the Y. M. C. A. meeting in the chapel Sunday afternoon.

The trustees of the college met last Tuesday and transacted business. H. L. Kuns of Gilroy was also present.

No subscription to this paper will be taken for less than six months, payable in advance.

Mr. James, recently from Mass., purchased Mr. Kughen's fine place in the Iowa colony, and forty acres west of Hermosa and will plant it to oranges, lemons and grapes.

D. A. Norcross of Glendora, in the discussion at the conference, exhibited a good deal of good sense and gospel knowledge of things spiritual. He hasn't much "wind" in his argument.

H. L. Kuns of Gilroy, whose son and daughter are attending college at this place, arrived last Sunday evening. Mr. Kuns is a wide-awake Christian gentleman with broad views and a charity which is flavored largely with the spirit of Him who loves all men.

O. W. Lehmer, who has been assistant agent of the Southern California railway at South Riverside the past eight months, has severed his connection with that company and is now in Lordsburg.

The Dunkards of California held their conference in the chapel last Monday. There was a large number of members present, but only six delegates. Eld. I. M. Gibble of San Jacinto was chosen to represent California in the general conference which convenes at Cedar Rapids, Iowa, in June.

The directors of the Lordsburg Public Library met in the Library room of the college the evening of the 3d. and organized as follows: G. L. McDonald, president; S. A. Overholzer, vice president; F. U. Nofziger, sec'y; Hettie Gibble, treasurer; Mahlon Masterson, librarian; G. L. McDonald, J. S. Flory and M. M. Eshelman, executive committee. Rules for the government of the Library, were prescribed, labels for the books and other necessary printing ordered, and the executive committee authorized to purchase books of record. The

entire machinery for the procurement of a library and its management were set in motion, and now may the friends of education and intellectual culture come forward cheerfully and eagerly with the "sinews of war" and help build up a monument of thought and truth for the use of those who shall live after us, that they may be well qualified for citizenship in their day and generation.

Recently a party of four, consisting of Mr. and Mrs. J. E. Kindig, Miss Amy Eshelman and A. C. Best, took a trip for pleasure and past time to the foothills and canyon north of town. Going as far as they could by team they concluded to try walking a while. Following a path going up the side of the hill they came to a house around which was planted flowers of all kinds—the owner having vacated it some time before. After resting here some time the "boys" concluded to go on up and find snow if possible. They climbed to the top of a lofty peak and going through snow eighteen inches deep and amid a snow storm they ate their oranges with not quite so much relish or as contentedly and easily as they would in a warmer climate. After viewing the Pacific and making several snow balls they descended much easier than they had ascended, and reported that they had more past time than pleasure, while with the party awaiting them it was vice versa. The snow balls were as eagerly received as an orange is to an Easterner.

At a meeting of the faculty and students last Wednesday a constitution was adopted and the following officers were elected, the president having been appointed by the board of trustees: Mrs. Nofziger, vice president; Mahlon Masterson, secretary; Margaret Kuns, recording sec'y; John Neher, treasurer; F. U. Nofziger, critic Howard Flory and Warren Payne, sergeant-at-arms; Jennie Stoner, press reporter. A program was arranged for Saturday evening Febr. 6. Meetings will not be open to the public except when announced. It was agreed to publish monthly the Athenian Star to give the students a taste of journalism and as a sort of spice in their literary work. The privileges and opportunities of the young to make themselves master of themselves by being trained to clothe their ideas properly before an audience, will certainly be appreciated, and it ought to be the aim of each to attain to a high standard with all the helps which can be secured.

4-347.

## Notice for Publication.

Land office at Los Angeles, Cal. Jan. 7th 1892,

Notice is hereby given that the following named settler has filed notice of his intention to make final proof in support of his claim, and that said proof will be made before Register and Receiver at Los Angeles, Cal. on Feb. 29th 1892, viz: William F. Wheeler, Home No. 3741 for the N. 2 of N. W. 4 and S. E. 4 of N. W. 4 Sec. 20 T. 1 N R 8 W S P M.

He names the following witnesses to prove his continuous residence upon and cultivation of, said land, viz: Charles E. Straight of Lordsburg, Cal.

W F Chappel " "  
Elias Finck " "  
John T Lawrence " "

Any person who desires to protest against the allowance of such proof, or who knows of any substantial reason, under the law and the regulations of the Interior Department, why such proof should not be allowed, will be given an opportunity at the above mentioned time and place to cross examine the witness of said claimant, and to offer evidence in rebuttal of that submitted by claimant.

W. H. Seamans, Register

## SURE THING!

That people have discovered that W H Goodrich, of Pomona, sells new and second-hand furniture as cheap or cheaper than it can be had in Los Angeles or any other place in Southern California; people are wondering how it is that great mirrors, fine chairs, upholstered furniture, bedroom furniture, carpets, stoves, tinware, crockery and many other useful things are going so cheap at Goodrich's; again some say: "I have heard of Goodrich's cheap store, but had no idea he sold cheaper than elsewhere until I tried him."

## Free Ride!

—TO—

## CALIFORNIA,

## Water Is King,

## RICH SOIL

## CHEAP LANDS.

ANY one coming from Missouri River points and purchasing 20 acres of fruit land through the firm of

E. J. NAIR,

Lordsburg, California,

Will have the amount of their railroad fare credited on the first payment.

Parties coming from points east of the Mississippi River and purchasing 30 acres of land will have the amount of their railroad fare credited on their first payment.

These lands range in price from \$40. upward, and will be sold no cheaper to parties living in California. Absolute fairness to all, and satisfaction guaranteed on business principles; as we shall in all cases carefully see that titles are perfected before sales are concluded.

No. 7. Fine 20 acre tracts near Hemet in the San Jacinto Valley. Loose sandy soil ready for trees at \$50. per acre, on easy terms

No. 4. Olive and lemon land at Esvena. 210 acres at \$50. per acre, or \$10,500. With this goes 120 acres of mountain land containing water for irrigation and domestic use. Water piped to this tract and more can be developed.

T. J. NAIR

Lordsburg, California.

## The World Enriched.

The facilities of the present day for the production of everything that will conduce to the material welfare and comfort of mankind are almost unlimited and when Syrup of Figs was first produced the world was enriched with the only perfect laxative known, as it is the only remedy which is truly pleasing and refreshing to the taste and prompt and effectual to cleanse the system gently in the Spring time or, in fact, at any time and the better it is known the more popular it becomes.

Notice: O. Dundas, of the Dundas Bakery, Pomona, will deliver Bread Mon, Wed. and Fridays, hereafter.

## Orange Trees For Sale, Cheap.

24,000 Washington Navels.  
8,000 Valencia Late.  
6,000 Mediterranean Sweets.

Undoubtedly, this is the finest lot of orange trees in the valley, being from 4 to 5 feet, with good tops, on four year old roots. Bargains for all, no one goes away without purchasing; can suit anyone. Call on, or address: J. E. Kindig, Lordsburg, Cal.

Red Rice's—Saturday, Febr. 6th. All day today you can get such bargains in furniture and all household goods at Red Rice's Bazaar 143 and 145 S Main street, Los Angeles, that it will pay you to travel a hundred miles to get there.

"The World's Hope" or the "Rock of Ages" a book of over 800 pages. Forty fine engravings; half morocco beveled marbled edges; gilt title. Rev Robert Boyd, D D author. A few copies to be had at \$2.50 per copy, former price \$4.50. Address or call at this office.

Wanted: All those who borrow their neighbors newspaper to read, to know that they can get the paper themselves every week in the year by leaving \$1.00 at this office. At any rate this would be less bother to your neighbor.

## NOTICE.

A full outfit of Barnes Improved Foot-power machinery for sale, cheap. For terms call on or address, W. K. Whitesell, Lordsburg.

## YOUR NOTICE.

SUBSCRIBERS who find their paper marked in blue here will understand that their subscription expired with the number so marked. All such are kindly requested to renew their order accompanied by \$1.00—the price of the SOUTHERN CALIFORNIAN for one year.

**Facts About California.**

Second largest State in the Union; area, 157,801 square miles.  
 Acquired by United States, 1847.  
 Gold discovered February, 1848.  
 First State in value of gold product.  
 Total value of gold and silver product since 1848, \$1,368,450,000.  
 Most diversified agricultural State in the Union.  
 Largest producer of honey.  
 Only raisin producing State in the Union.  
 Only State in which olive's thrive.  
 Home of the orange and the fig.  
 Leading producer of the almond, English Walnut, etc.  
 Finest climate in the world.  
 Largest trees in the world.  
 San Francisco the third commercial city in the United States.  
 Largest per capita wealth of any state in the Union.  
 California, San Francisco and Los Angeles, practically out of debt.  
 Value of mineral products in 1890, \$23,850,000.  
 Admitted to the Union September, 9th, 1850.  
 Population in 1880, 864,894; in 1890, 1,205,000.  
 Ranked twenty-second in population in 1890.  
 Ranked sixteenth in percentage of growth from 1880 to 1890.  
 Assessed value of all property 1880, \$666,183,320; 1890, \$1,060,390,296.  
 Deposits in saving banks, 1890, \$98,442,000; increase over 1880, \$11,430,000.  
 Deposits in commercial banks, 1890, \$42,321,000; increase over 1889, \$1,869,000.  
 Total deposits in all banks, 1890, \$171,226,531.  
 Area arable land, 38,000,000 acres; cultivated, 2,500,000 acres; forests, 20,000,000.  
 Value of cereal, hay and root crops, \$70,000,000.  
 Value of manufactured products, 1880, \$116,218,000; 1890, \$165,000,000.  
 Miles of railroad in the State, 4500; assessed valuation, \$40,248,000.  
 Capital invested in vineyards, \$80,000,000.  
 Wine product for 1890, 18,200,000 gallons; dried wine grapes, 9,000,000 pounds.  
 Area wine and raisin grape vineyards, 225,000 acres.  
 Raisin output for the year, 2,000,000 boxes, or 40,000,000 lbs.  
 Prune crop for the year, 15,000,000 pounds.  
 Green fruits shipped East, 105,000,000 pounds; 1880, 5,180,000 lbs.  
 Dried fruits shipped East, 66,218,000 pounds.—Ex.  
 Percentage of increase of population, 39.25; percentage of increase of voters 55.75  
 Oranges shipped East, 1889-90, 3187 car loads; crop 1890-91 4000 car loads  
 Number of farm animals in the State, 6,063,440; total value, \$57,771,280.

**T. J. Nair, Is Agent**

—FOR THE—  
 Pacific Land Improvement Co's.,

**Lots In--**

LORDBURG, - - - Calif.,  
 If you wish to live in a quiet town with good society, good soil, good water, excellent school and church privileges, near the depot of the "Santa Fe Route," and want a lot or two call on: or Address:  
 T. J. Nair.  
 Lordsburg Calif.,

**E. B. Tilden**

Is ready with another big stock of just the things you want for Christmas. Prices never cheaper; goods never so varied and complete. I have all kinds of work boxes, albums, toilet cases, jewel boxes, dolls, carts, wagons and Japanese and California curios. Come and see me.

**Owen Beirnes.**

—THE LEADING—  
 BOOT and SHOE maker.  
 Repairing neatly done.  
 Opposite Brown's Hotel,  
 Pomona, California.

**HONEY**

When you want pure white sage HONEY call on PETER FLEMING CLAREMONT, Cal.

**COME and SEE! GOOD Bargains.**

**HOMES FOR THE HOMELESS.**  
**CHOICE ORANGE LANDS WITH WATER \$150 PER ACRE.**  
**DECIDUOUS FRUIT LANDS, \$40 to \$75 PER ACRE.**  
**THE HEMIT LANDS IN THE MARKET.**  
**THESE LANDS HAVE A FINE WATER SYSTEM.**  
**OTHER RICH LANDS UNDER CULTIVATION VERY CHEAP.**  
**CHEAP FUEL, LIME, LUMBER, AND MANY OTHER GOOD THINGS.**  
**HEALTHFUL CLIMATE, PURE WATER, GRAIN, GRASS, CATTLE, HORSES AND SHEEP.**  
 It will pay to own some of these lands. Come and see for yourself. Call on, or address:  
 Webber & Griffin,  
 Managers Immigration Bureau,  
 San Jacinto, California.

**First National Bank.**

OF POMONA, CAL.

Capital and surplus, \$60,000.

—OFFICERS;—

C. Seaver, President, Thos. Coates.  
 Vice Pres. Stoddard Jess, Cashier.  
**STOCKHOLDERS**  
 A. T. Cunier, Geo H. Bonebrake.  
 J. E. McComas Thos Coates.  
 Geo. Jess, F. C. House. Stoddard Jess  
 C. Seaver. A General  
 Banking business transacted.

**\$100 IN CASH**

To be given away.  
 A STRAIGHTFORWARD DONATION TO BE GIVEN AWAY BY DIVIDING PROFITS.

With each dollar's worth of goods purchased for cash at our store, we will give a cash coupon good for five cents in cash, and when one dollar's worth or twenty of these coupons are presented at our store by any one person, we will cash them paying one dollar in silver for same.

**W. H. KILER,**

DEALER IN  
**Boots and Shoes,**  
 LATHROP BLOCK, SECOND ST.  
 Pomona, Cal.

**THE TIMES.**

**THE LEADING DAILY**  
 IN SOUTHERN CALIFORNIA.

Is the only morning Republican paper in Los Angeles that owns the exclusive right to publish here the telegraphic night report of the Associated Press, the greatest news gathering organization in the world.  
 Published every day in the year. Price, by mail, postpaid, \$9.00; per quarter, \$2.25.

**THE WEEKLY MIRROR.**

Contains all the news of the Daily. Its specialty is the development of Southern California. The best family paper in Southern California—twelve pages reading matter. Send for specimen copy; price \$2.00 per annum.

**THE TIMES-MIRROR CO.**

The TIMES-MIRROR  
 Printing and Binding House.

There is nothing in the above line we are not prepared to execute equal to any office in the State. We turn out all kinds of Mercantile Railroad and Legal work at lowest rates.

Address:  
 THE TIMES-MIRROR PRINTING AND BINDING HOUSE,  
 Los Angeles, Calif.

**Southern California.**

For information relative to a genial climate and a productive country subscribe for the SOUTHERN CALIFORNIAN—an eight page weekly paper, \$1.00 per annum.

Address SOUTHERN CALIFORNIAN,  
 Lordsburg, California.

**Chino Ranch**

**Meat Market.**

**RICHARD GIRD, Prop.**

**Fresh Meats, Sausage**

**Bacon and Salt Meats.**

**ORDERS**

**Receive Prompt**

**Attention**

RICHARD GIRD, CHINO, CAL

**Santa Fe Route**

SOUTHERN CALIFORNIAN RAILWAY

Is The Shortest Line From Southern California to Denver, Kansas City, Chicago, Boston, New York, and All Eastern Cities

Time from 12 to 24 hours  
 Quicker than any other line.

Pullman Palace Sleeping Cars  
 Run through from  
**SAN DIEGO TO CHICAGO**  
 Every day in the year,

**PERSONALLY CONDUCTED**  
**TOURIST EXCURSIONS**  
**THROUGH TO BOSTON**

—Leave California every Thursday.

Pullman Tourist Sleeping Cars used on these excursions are carpeted and curtained and supplied with mattresses, blankets, sheets, pillows and lunch tables. A Pullman porter is in charge of each car to attend to the comfort of our patrons.

REMEMBER THAT THE

**SANTA FE ROUTE**

makes 48 hours quicker time to Boston than any other line.

Rates for these excursions are the **LOWEST RATES** made from California to the East.—For full information call on or address:

C. S. Gilbert, Agent, Lordsburg, Cal.,  
 or, C. A. Warner, Excur. Manager,  
 129 N. Spring St., Los Angeles Cal.  
 K. H. Wade Gen. Mang'r  
 S. B. Hynes, Gen. Pass'r. Agt.

**MISCELLANEOUS.**

The orange grower's life in Southern California presents a singular contrast to that of the fruit grower of the east. Here it is perpetual summer, so far as ~~the~~ <sup>the</sup> going goes. During the summer proper, from April to October, the farmer is devoting himself to his peach orchard his apples, pears, small fruit, grapes, raisins, wines, etc. This over, the orange, lemons and limes are ripening, so that the entire year is occupied. While his eastern brother is hauling wood or hounded by snowstorms, he is picking his oranges; in other words, he has, in his estimation, two chances to the eastern farmer's one, and is, probably making ten times as much money.—American Cultivator.

School Teacher (sadly)—I'm afraid Johnny, that I'll never meet you in heaven. Johnny—Why what have you been doing now?—Harpers Bazar.

**A DAINY DOG.**

Tramp—"Say, gov'n', will yer dog bite me?"

Owner—"Not he. He's very particular what he eats."

The difference between an editor and his wife is that his wife sets things to rights while he writes things to set.

"Who said that it was tired," asked the farmer sternly, looking around.

"I think," said the horse meekly, "it was the wagon wheel spoke."

All that most men have in the world is what they are going to get.

**DIDN'T KNOW HOW TO APPLY IT**

Lady (to rheumatic old woman)—"I am sorry you should suffer so—you should try electricity."

Old Woman—"Thank you kindly, mum. Be I to swallow it or rub it in?"

The human heart, in a lifetime of eighty years beats 300,000,000 times.

A bright future.—"When I was wenty one years of age," he said. "I ought that if I wasn't rich at thirty would be too old to enjoy wealth."

"How old are you now?"

"Seventy."

"And rich, of course?"

"No, I am a poor man yet; but I've a scheme in view that will make as rich as mud before I'm eighty (then I propose to take things easy i enjoy life."

**FEARFUL.**

Dawkins looks very pale and any-today."

He is worried. He is to have a veinful operation performed to

"hat's that?"

He is to have a porous plaster re-d from his back.

ight money market often induces financial operations.

**Special Excursions**

Will leave CHICAGO and KANSAS CITY over

**"The Santa Fe Route"**

On the following dates during 1892.

Chicago Tuesday evenings and Kansas City Wednesday mornings.

CHICAGO January 26th, Feb. 23d, March 22d April 26th, May 24th, June 28th, July 26th, Aug. 23d, Sept. 27th, Oct. 25th, Nov. 22d, Dec. 27th.

KANSAS CITY Jan. 27th, Feb. 24th. March 23d, April 27th, May 25th June 29th, July 27th, Aug. 24th, Sept. 28th, Oct. 26th, Nov. 23d, Dec. 28th.

**RATES.**

The ticket rates for these excursions are the lowest rates at which tickets are sold from Eastern points to the Pacific coast.

**CHILDREN.**

Between 5 and 12 years of age, half fare.

**DESCRIPTION OF TOURIST CAR.**

The cars are built on the general plan of first-class sleepers, having lower and upper double berths. The lower berths are converted into comfortable seats during the day. The toilet rooms are fitted with washstands, towels, soap, combs, brushes, and plentiful supply of water for toilet and drinking purposes. The aisles are carpeted; mattresses, blankets, sheets, pillows, curtains, and lunch tables are furnished. The cars are large, airy, well lighted and ventilated, the only material difference between them and the Palace sleepers is the absence of upholstery.

**SLEEPING CAR RATES.**

Berths that will accommodate two,  
From Chicago ..... \$4.00  
From Kansas City ..... 3.00

**BAGGAGE.**

150 lbs. free with every full ticket, and 75 lbs. every half ticket; not over 250 lbs in any one box or trunk.

**TICKETS SHOULD READ:**

From Chicago and all intermediate points to Albuquerque, over Atchison, Topeka and Santa Fe R. R. From St. Louis, over St. Louis & San Francisco Ry. to Burton, Kansas; then Atchison, Topeka and Santa Fe to Albuquerque; Atlantic and Pacific Ry., Albuquerque to Barstow; Southern California Ry., to destination.

**Some of the advantages.**

Parties availing themselves of these excursions will receive the personal attention of the excursion agent, and all the old towns, mountains, peaks, canyons, extinct volcanoes, and many other curiosities will be pointed out and explained. These excursions are peculiarly educational in character.

Secondly, the Santa Fe is the shortest route from Chicago and Kansas City.

Comfort, convenience and quickness are prominent features of the Santa Fe route.

Send for maps, time tables, and general information relative to Southern California.

This is the only Route running tourist cars through from Chicago and Kansas City to Southern California without change.

M. M. ESHELMAN,  
Immigration Agent,  
Lordsburg, Calif.

**SANTA FE ROUTE.**

SOUTHERN CALIFORNIA R. R.

**TIME CARD.**

**GOING EAST**

Atlantic Express (does not stop) ..... 1:45 P. M  
Local mail, daily, ..... 10:00 A. M  
San Ber'n'o accom. daily ..... 5:36 P. M  
Local Freight daily except Sun. .... 11:45 A. M

**GOING WEST.**

Pacific Express, daily ..... 1:13 P. M  
Los Angeles accom. daily ..... 8:21 A. M  
Local mail daily ..... 4:55 P. M  
Local Freight" except Snn. .... 8:30 A. M

The Pacific Express, going west will stop to let off passengers from the east.

C. S. GILBERT Agt.

**We Have Changed**

Our plan a little, and now take orders on Wednesday afternoon and deliver Thursday forenoon.

Our goods are "WAY UP." Prices WAY DOWN.

We have also changed our firms name, and are now:

**DANIELS & FELLOWS,**  
**Grocers, - - - - - Pomona.**

**R. S. Bassett, OF POMONA,**

Solicites correspondece with parties regarding

**REAL ESTATE,** Both Improved and Unimproved by parties wishing either to Buy or sell.

I keep always on hand a large stock of the leading makes of **PIANOE'S, ORGAN'S AND SEWING MACHINE'S,** Which I sell at low prices and easy terms. Call and see me

TEL. 269.

**W. E. BEESON**

221 S Spring St.,  
Los Angeles  
Cal.,

Fine Stock,  
**Carpets**  
Right Prices,

RUGS,  
MATS,  
SHADES,  
MATTINGS,  
HASSOCLS,  
OILCLOTHS,  
DRAPERIES,  
BRASS GOODS,  
ETC., ETC.,

IT IS NOT WHAT YOU MAKE, BUT WHAT YOU SAVE that will make you rich. You can SAVE MONEY by buying your **FEED HAY & COAL OF ROGERS BROS.** West Second St. Pomona, Calif.

**The Elite Studio, Lathrop Block Pomona.**

**Cabinet Photos \$3.50 per dozen**

Childrens pictures a specialty. Bring the babies to me and I will get a good picture of them for you. J. S. Howard.

**Becket & Cole,**

**--Dealer in-Choice --:- Family --:- Groceries.**

Corner Main and Second Sts.,

Pomona, Calif.,

**H. E. STRONG,**

—DEALER IN—

**FURNITURE AND CARPETS.**

WALLPAPER, WINDOW SHADES, Etc.

2-44

Second St., POMONA, CAL.,

**IRA F. WHITE & SON**

—DEALER IN—

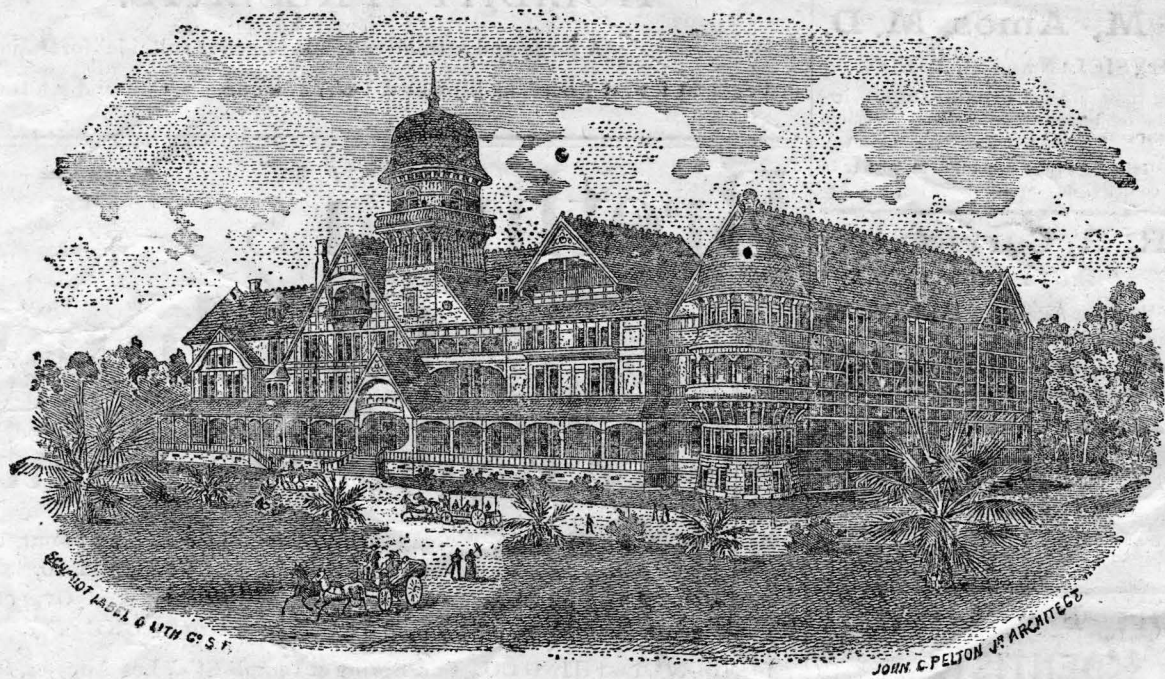
**HARDWARE, TINWARE STOVES and PLOWS.**

Second St. : : : : : Pomona, Cal.,

**JOSEPH QUINLAN,**

**The Merchant Tailor of Pomona.**

SUITS TO ORDER FROM \$20 UPWARD. 2 44  
Largest and Finest Stock of Imported and Domestic Goods in the City.



**LORDBURG COLLEGE.**

**The Lordsburg COLLEGE**

Lordsburg, Cal.

EIGHT DEPARTMENTS.  
EFFICIENT INSTRUCTORS.  
FIRST CLASS BUILDING IN

A COUNTRY WHERE THE GRASS IS GREEN ALL THE WINTER AND FLOWERS BLOOM ALL THE YEAR

OPENED Sept., 9th., 1891.

**FACULTY.**

- DR. S. S. GARST, PRESIDENT.  
Mental and Moral Philosophy.
- SOLOMON HENRICKS, B. S.,  
Mathematics, Astronomy & Surveying.
- MARY ROBERTSON, A. B.,  
Ancient Languages
- F. U. NOFZIGER,  
Principal of Commercial Dept.
- MRS. MAGGIE NOFZIGER,  
Type Writing and Stenography.
- NETTIE ROYER,  
Drawing and Painting.
- SUE WENGER,  
Principal of Musical Department.
- M. M. ESHELMAN,  
Principal of Model Training Dept.
- EMMA YODER,  
Teacher of Model Training Dept.

**INCORPORATION.**

The Lordsburg College Association was incorporated under the laws of the State of California March 9, 1891, with a capital stock of \$100,000

The financial condition of the institution is excellent, the building and grounds being unencumbered, thus enabling the trustees to secure and maintain an efficient corps of instructors.

**COURSE OF INSTRUCTION.**

The College will sustain the following departments of instruction: Commercial, Normal, Collegiate, Preparatory, Art, Musical, Model Training and Biblical.

Any student desiring to attend only a few terms is allowed to choose a special course of studies, approved by the Principal or the Faculty.

**COLLEGIATE DEPARTMENT.**

This department offers three courses of study: Classical, Scientific and Literary.

No effort will be spared to make this department equal to that of any other well regulated educational institution.

**PREPARATORY DEPARTMENT.**

This will cover a three year's course giving a thorough training to those who expect to take the higher courses.

**>NORMAL<**

This course is similar to that of the California State Normal. We invite especial attention of teachers to this feature of the institution.

Three year's work is included, besides a Post Graduate course of one year.

Credit will be given to students for work done in other reliable institutions.

**>COMMERCIAL<**

Just what is needed to prepare young men and women for efficient work in the business world.

Instruction and drill equal to the best.

Charges less than half the rates usually charged by business colleges.

It requires from six to nine months to complete this course, including Penmanship, Orthography, Grammar, Book-keeping, Commercial Law, Commercial Arithmetic, Business Correspondence, and actual business.

After the theory of Book-keeping is well understood, the pupil is admitted into the Business Department where he has actual practice in banking, wholesale and retail, commission, shipping, business correspondence, and becomes acquainted with all kinds of commercial paper, such as deeds, mortgages, notes, drafts, etc.,

**STENOGRAPHY and TYPE-WRITING.**

We call special attention to this department of our work. Ten dollars pays for tuition for fourteen weeks in this department.

The "Remington type-writer" will be used.

**BIBLICAL.**

The Bible Course, for the systematic study of the Old and the New Testaments offers excellent inducements to all who desire to become familiar with the teachings of this wonderful Book.

**ART DEPARTMENT.**

In this is offered superior advantages for painting in the various branches.

The instructor of this department is prepared to give lessons in charcoal crayon, pastel, India ink, drawing and water color.

**MODEL TRAINING COURSE.**

The Model Training Department admits pupils six years of age and over. The best methods of instruction will be followed, and pupils promoted to higher grades as rapidly as their standing will permit.

Those preparing to teach, are expected to take training lessons in the model school.

**MUSICAL.**

The authorities of the College propose to make the department of music in this institution equal to the best in the country.

Arrangements have already been made and others projected which will render its facilities of the first character.

The department is under the charge of an experienced instructor, and all the instruction given and advantages offered are intended to be unsurpassed.

The methods of teaching will be the best that are now known to the profession.

**MORAL AND RELIGIOUS.**

The college will be under the auspices of members of the German Baptist Brethren Church, and all students irrespective of creed will be admitted, and the best moral and religious influence will be maintained in the interest of all who are identified with the institution.

**LOCATION.**

The College is located at Lordsburg

California, on the Santa Fe Railway thirty-three miles east of Los Angeles and distant from the Pacific Ocean about thirty-five miles. It is peculiarly favored for healthfulness, having an altitude above the sea of 1,000 feet, and less than three miles from the base of the Sierra Madre mountains, the scenery of which, in connection with that of the valleys, awakens the admiration of the lovers of the beautiful

**BUILDING.**

The College structure has a south frontage of 183 feet; a wing at the east end extends north 109 feet; another wing at the west end extends north 183 feet. It is three stories high with a basement of five rooms under the east wing, and was erected at a cost of \$73,000, and contains 131 rooms, many being suites of two connected by sliding doors.

Three fine eucalyptus groves grace the north side of the campus, while on the south are cypress hedges, palm and other semi-tropical plants.

A fountain twenty-two feet in diameter sends up its silvery sprays in every direction.

**CALANDER.**

Fall Term (fourteen weeks) begins Wednesday, Sept. 16, 1891; ends Wednesday, Dec. 23, 1891.

Winter Term (twelve weeks) begins Tuesday, Jan. 5, 1892; ends Tuesday March 29, 1892.

Spring Term (twelve weeks) begins Wednesday, March 30, 1892; ends Wednesday, June 22 1892.

**EXPENSES.**

Fall Term (fourteen weeks), tuition \$13.00; board, \$35; room rent, \$2.50. Total, \$50.50.

Winter or Spring Term (twelve weeks), tuition, \$11.00; board, \$30.00; room rent, \$2.50. Total, \$43.50. A discount of ten per cent, for year's expenses in advance. No extra expenses for fuel.

Type writing and stenography (including use of type-writer) \$10.00 per term.

Music.—Instrumental (piano or organ) Winter or Spring Term, two lessons, per week, \$10.00.

Fall Term (twenty four lessons) \$12.00

Painting—\$10.00 per month of sixteen lessons, or .75 cts., per lesson.

Model Training Department, \$1.00 per month.

For railroad maps, information how to reach Lordsburg, or further particulars relating to the college, address, Dr. S. S. GARST, or

T. J. NAIR, Secretary.  
Lordsburg Cal.

**Lordsburg College.**

- BOARD OF TRUSTEES.**  
Daniel Houser: S. A. Overholtzer;  
H. Kuns, D. Kuns; T. J. Nair
- OFFICERS.**  
D. Houser, Pres., .....Covina Cal  
H. Kuns, Vice Pres., ..... Lordsburg, Cal.  
T. J. Nair, Sec'y, .....Lordsburg, Cal.  
S. A. Overholtzer, Treas., .....Covina Cal.  
J. F. Neher, Librarian, .....Lordsburg, Cal.  
S. G. Lehmer, Director of Museum Los Angeles, Cal.  
M. M. Eshelman, Assistant, Lordsburg.  
M. M. Eshelman, End't Agt., Lordsburg.  
G. L. McDonough, Assistant, Lordsburg.  
Geo. Browning, Supt., of grounds and buildings, ..... Lordsburg.