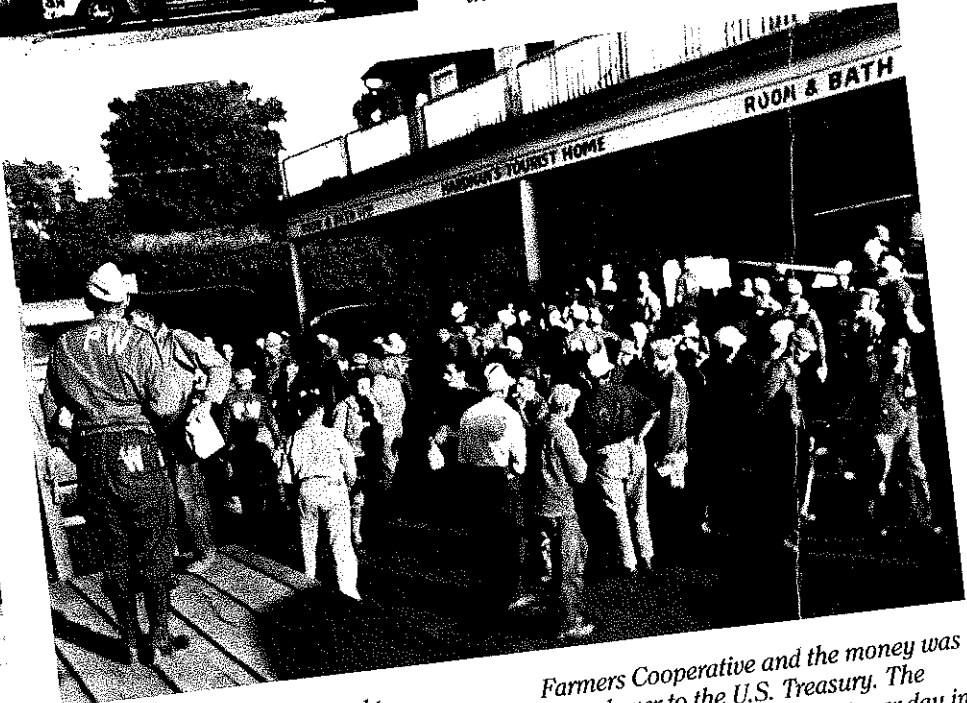




where he served as the commander of the 1st Cavalry Division, general of the Army. He died within a decade and his wife remained with the property until she traded it for land in Camden, New Jersey. In 1954, the Glenelg County School opened. Recently a new high school has been added to the campus of this private institution. From the author's collection



German war prisoners helped to harvest the county's crops during the World War II years when manpower was scarce. This 1944 photo shows that the prisoners were brought from Fort Meade daily to Hardman's Tourist Home, Frederick Avenue and St. John's Lane, where the farmers would pick them up. Many of the prisoners could speak English. Arrangements were made by County Agent Warren G. Myers and John E. Yingling. The farmer paid the prevailing wage to the Howard County

Farmers Cooperative and the money was turned over to the U.S. Treasury. The prisoners received eighty cents per day in credit or exchange coupons. They could either spend it or retain credit until the end of the war when it was converted into cash. Note that room and bath at the tourist home in 1944 was one dollar. Cooperative Extension Service, Howard County Historical Society



William McKinley Matthews, Jr., served in the Navy during World War II. When he returned he settled at Waterloo, in the vicinity of Meadowridge Road. He was employed at the Department of Agriculture and the Department of the Interior. His daughter, Janice Collier, and son, Everett Matthews, are still Howard Countians. Courtesy of Janice Collier and the Howard County branch of the NAACP