



DRAFT

INSTALLATION LOCATION:
Go to "All Signs in Plan" page

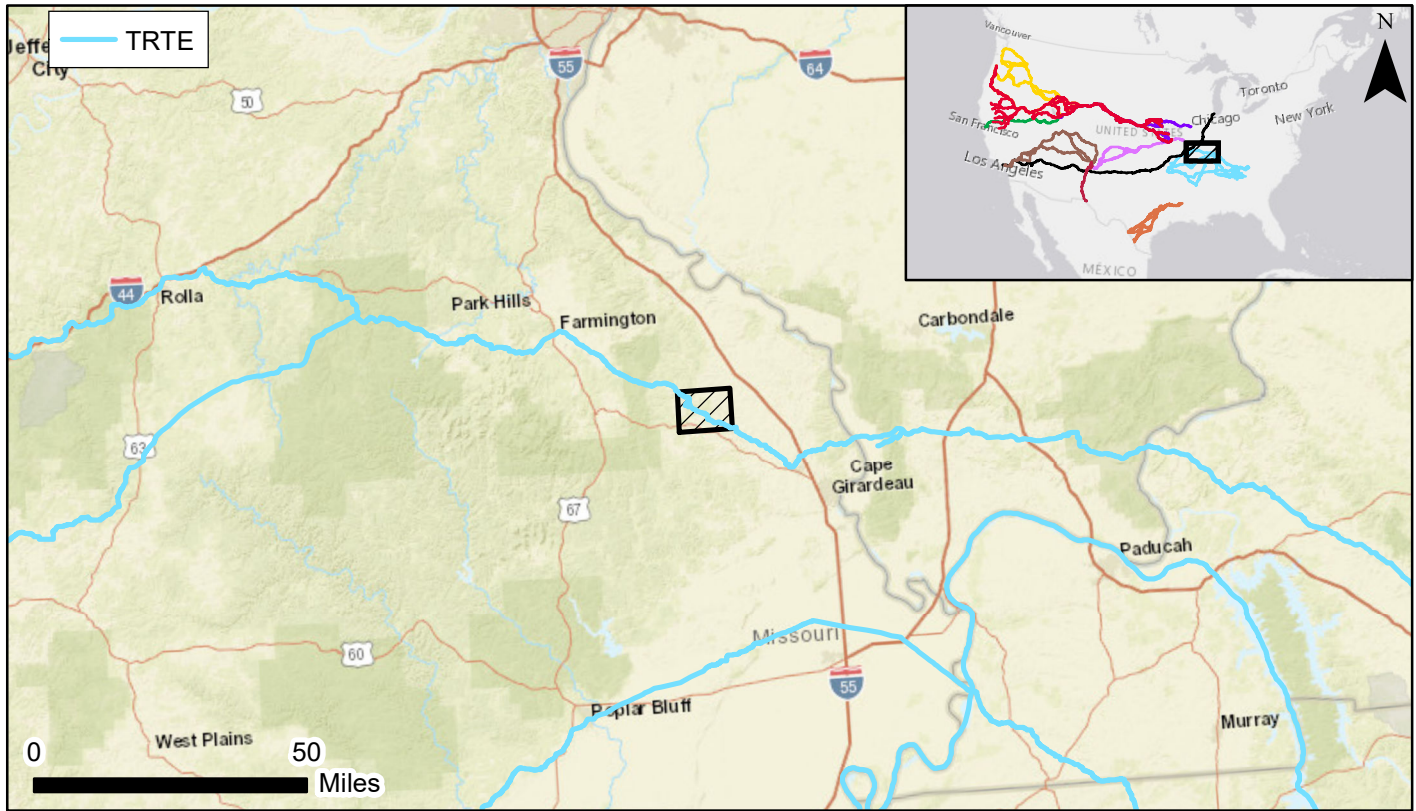
NORTHERN ROUTE - BOLLINGER COUNTY

Trail(s):

Trail of Tears National Historic Trail

Area of Interest (County, State):

Bollinger County, MO



Service Layer Credits: Sources: Esri, HERE, Garmin, USGS, Intermap, INCREMENT P, NRCan, Esri Japan, METI, Esri China (Hong Kong), Esri Korea, Esri (Thailand), NGCC, © OpenStreetMap contributors, and the GIS User Community
Esri, HERE, Garmin, © OpenStreetMap contributors, and the GIS user community

Prepared by:

Partners: *N/A*
NPS: *N/A*

Contact info:

Partners contact: *N/A*
NPS contact: *N/A*

Prepared on:

August 02, 2018

02:01 PM



DRAFT

INSTALLATION LOCATION:
Go to "All Signs in Plan" page

Table of Contents

Overview Map

Map Sheet Reference Index

Road Sign Plan Map Series

Reports

All Signs in Plan

Signs Sorted by County/State

Signs Sorted by Jurisdiction

Cost Estimate by Map Sheet

Sign Types Sorted by Trail

Cost Estimate Sorted by County/State

Cost Estimate Sorted by Jurisdiction

Cost Estimate Sorted by Sign Status

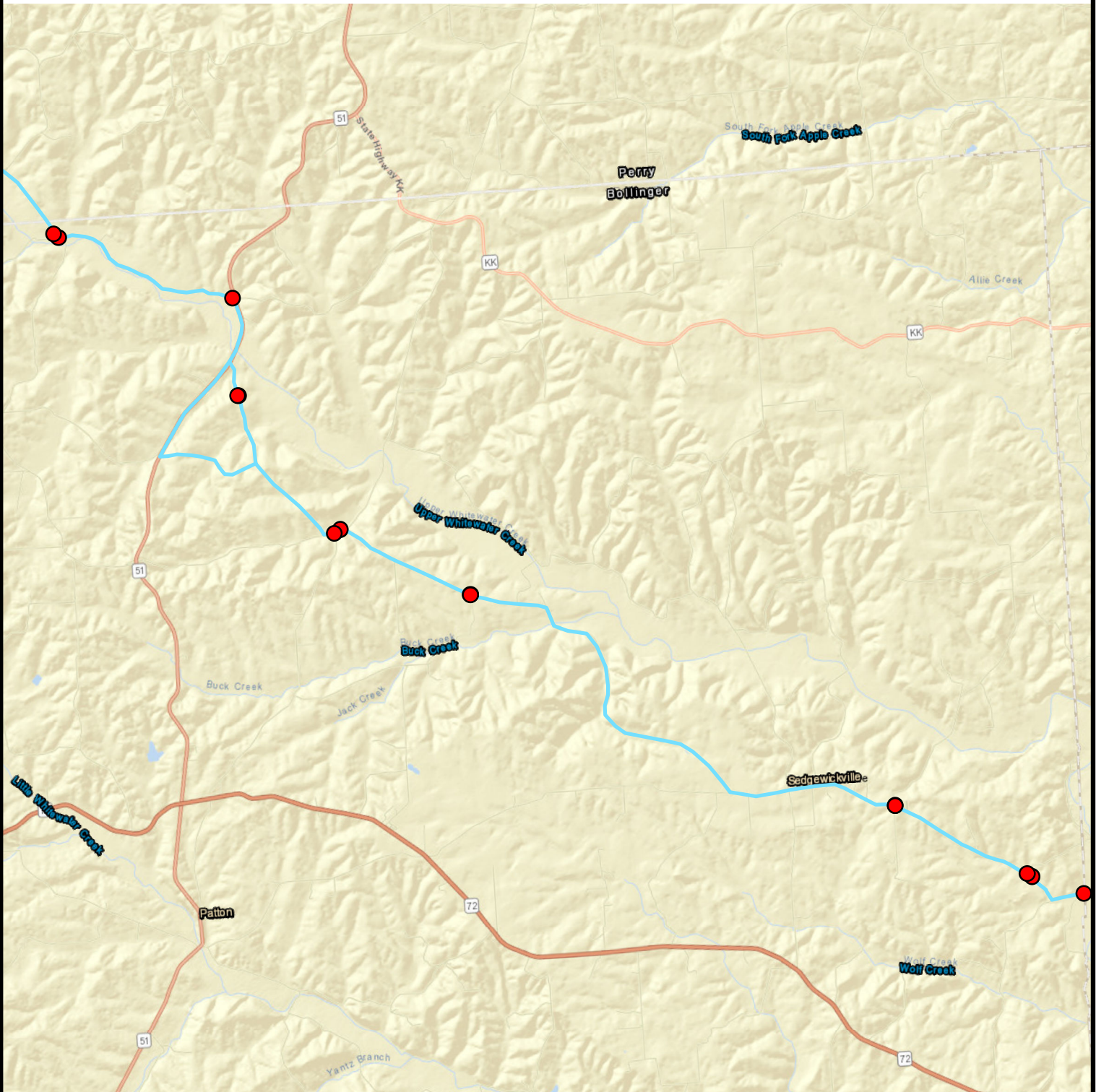
Road Sign Plan Specification Sheets



Northern Route - Bollinger County Overview Map

DRAFT



INSTALLATION LOCATION:
Go to "All Signs in Plan" page



Service Layer Credits: Sources: Esri, HERE, Garmin, USGS, Intermap, INCREMENT P, NRCan, Esri Japan, METI, Esri China (Hong Kong), Esri Korea, Esri (Thailand), NGCC, © OpenStreetMap contributors, and the GIS User Community
Esri, HERE, Garmin, © OpenStreetMap contributors, and the GIS user community



0 1.5 Miles

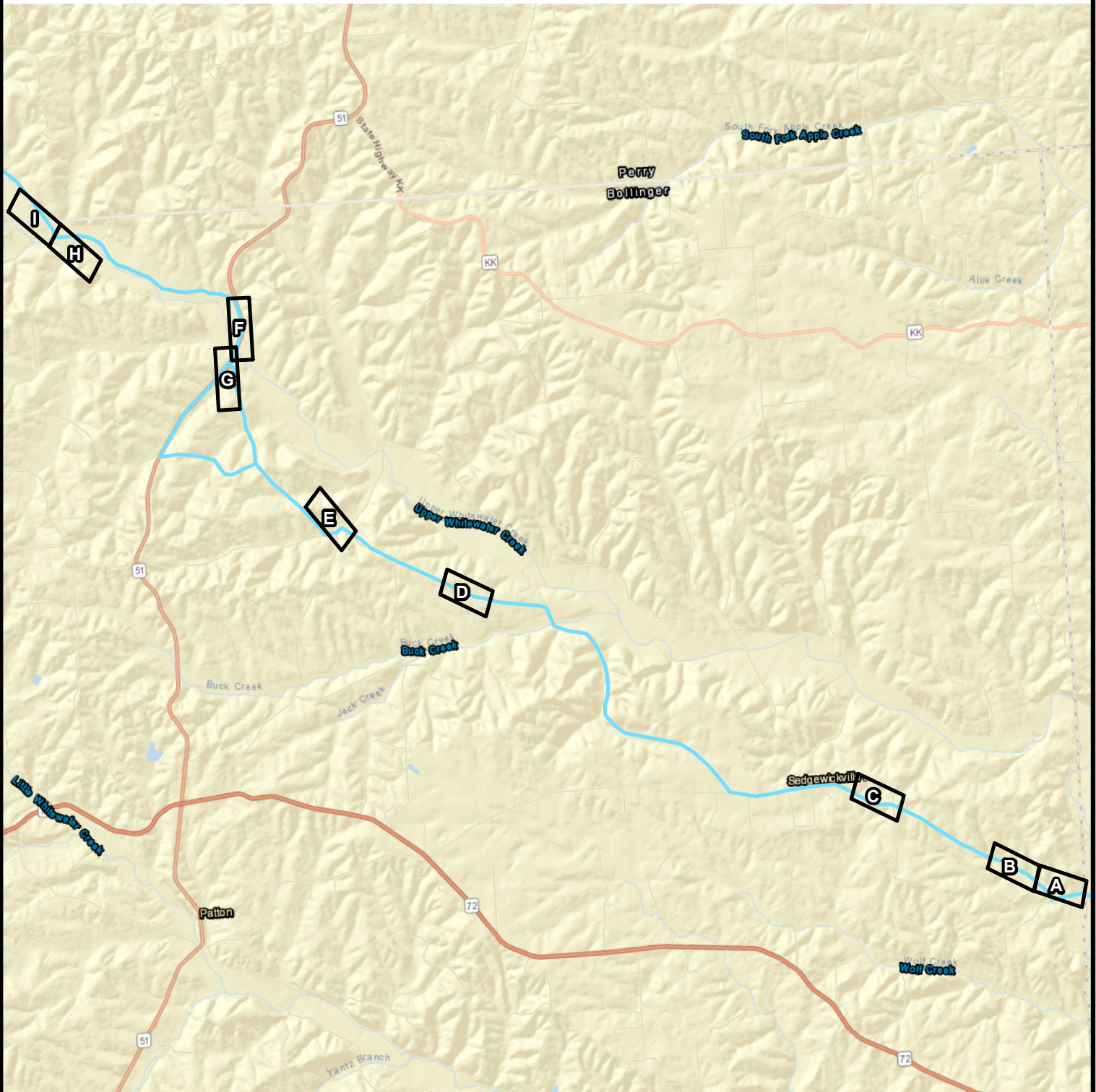
	Signs		TRTE
---	-------	---	------

No warranty is made by the National Park Service as to the accuracy, reliability, or completeness of these data for individual use or aggregate use with other data.



Northern Route - Bollinger County Map Sheet Index

DRAFT
INSTALLATION LOCATION:
Go to "All Signs in Plan" page



Service Layer Credits: Sources: Esri, HERE, Garmin, USGS, Intermap, INCREMENT P, NRCan, Esri Japan, METI, Esri China (Hong Kong), Esri Korea, Esri (Thailand), NGCC, © OpenStreetMap contributors, and the GIS User Community
Esri, HERE, Garmin, © OpenStreetMap contributors, and the GIS user community



No warranty is made by the National Park Service as to the accuracy, reliability, or completeness of these data for individual use or aggregate use with other data.



Northern Route - Bollinger County

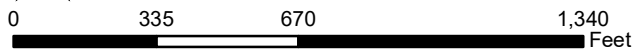
Map: A

DRAFT
INSTALLATION LOCATION:
Go to "All Signs in Plan" page



Service Layer Credits: Esri, HERE, Garmin, © OpenStreetMap contributors
Source: Esri, DigitalGlobe, GeoEye, Earthstar Geographics, CNES/Airbus DS, USDA, USGS, AeroGRID, IGN, and the GIS User Community

Sign ID	Sign Type	Trails	Site Name	Notes
1	Historic_Route	TRTE		
2	Historic_Route_Left	TRTE		
3	Historic_Route_Right	TRTE		



No warranty is made by the National Park Service as to the accuracy, reliability, or completeness of these data for individual use or aggregate use with other data.

Produced by National Trails Intermountain Region

02 August 2018



Northern Route - Bollinger County

Map: B

DRAFT
INSTALLATION LOCATION:
Go to "All Signs in Plan" page



Service Layer Credits: Esri, HERE, Garmin, © OpenStreetMap contributors
Source: Esri, DigitalGlobe, GeoEye, Earthstar Geographics, CNES/Airbus DS, USDA, USGS, AeroGRID, IGN, and the GIS User Community

Sign ID	Sign Type	Trails	Site Name	Notes
2	Historic_Route_Left	TRTE		
3	Historic_Route_Right	TRTE		



0 380 760 1,520
Feet



No warranty is made by the National Park Service as to the accuracy, reliability, or completeness of these data for individual use or aggregate use with other data.

Produced by National Trails Intermountain Region

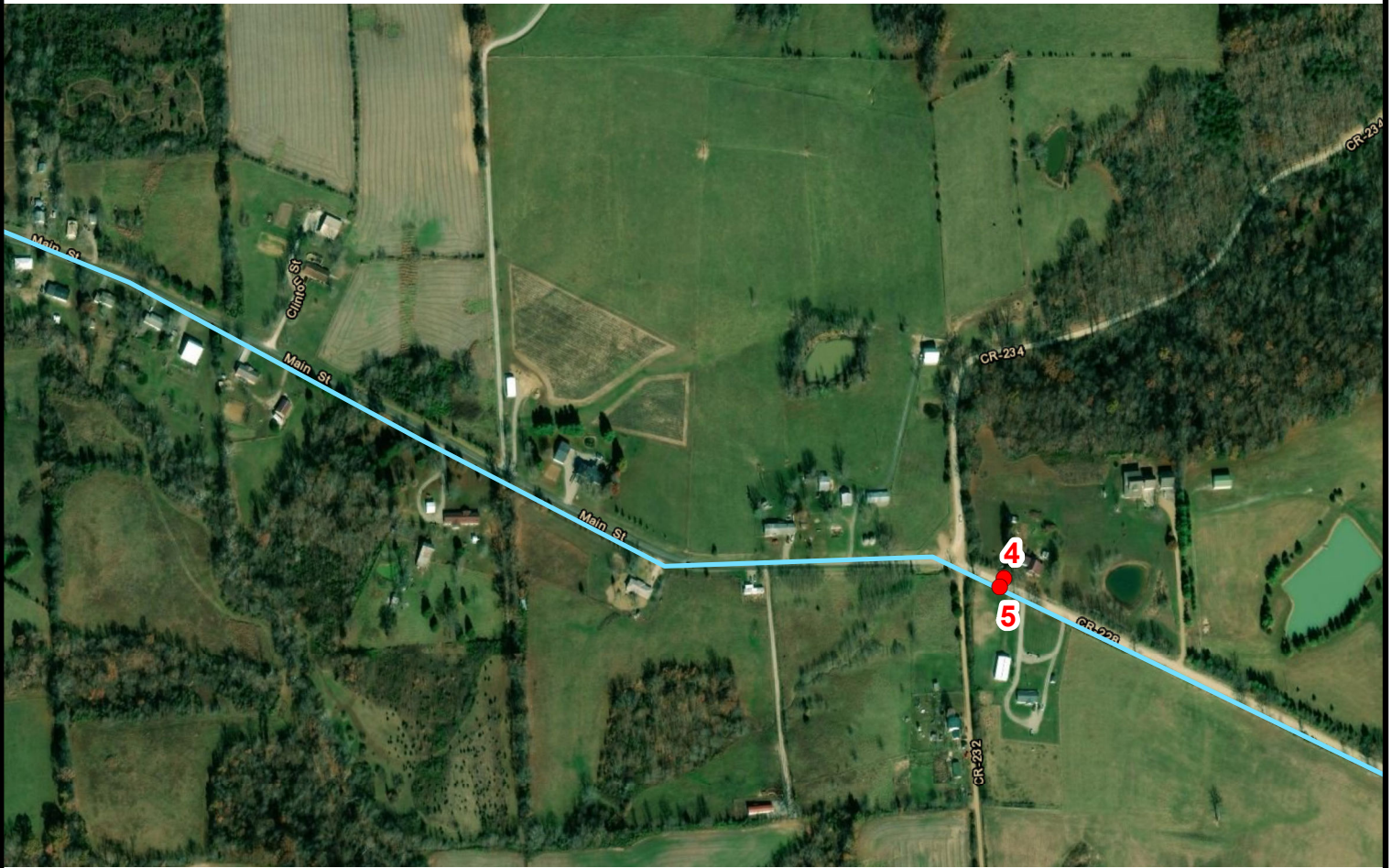
02 August 2018



Northern Route - Bollinger County

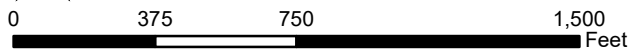
Map: C

DRAFT
INSTALLATION LOCATION:
 Go to "All Signs in Plan" page



Service Layer Credits: Esri, HERE, Garmin, © OpenStreetMap contributors
 Source: Esri, DigitalGlobe, GeoEye, Earthstar Geographics, CNES/Airbus DS, USDA, USGS, AeroGRID, IGN, and the GIS User Community

Sign ID	Sign Type	Trails	Site Name	Notes
4	Historic_Route	TRTE		
5	Historic_Route	TRTE		



Produced by National Trails Intermountain Region

No warranty is made by the National Park Service as to the accuracy, reliability, or completeness of these data for individual use or aggregate use with other data.

02 August 2018

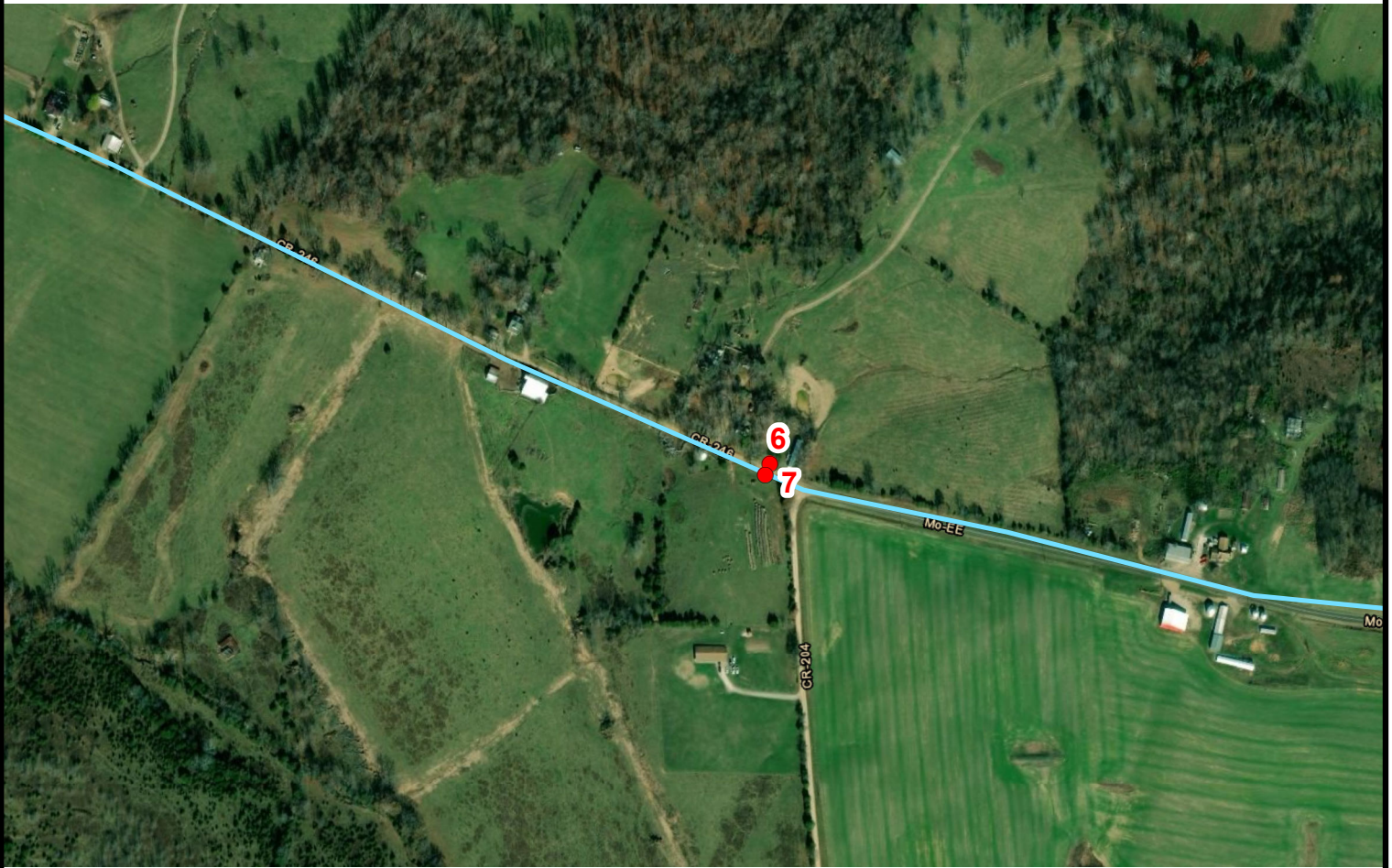
Data Sources: NPS, ESRI



Northern Route - Bollinger County

Map: D

DRAFT
INSTALLATION LOCATION:
Go to "All Signs in Plan" page



Service Layer Credits: Esri, HERE, Garmin, © OpenStreetMap contributors
Source: Esri, DigitalGlobe, GeoEye, Earthstar Geographics, CNES/Airbus DS, USDA, USGS, AeroGRID, IGN, and the GIS User Community

Sign ID	Sign Type	Trails	Site Name	Notes
6	Historic_Route	TRTE		
7	Historic_Route	TRTE		



0 375 750 1,500
Feet



Produced by National Trails Intermountain Region

Service Layer Credits: Esri, HERE, Garmin, © OpenStreetMap contributors
Source: Esri, DigitalGlobe, GeoEye, Earthstar Geographics, CNES/Airbus DS, USDA, USGS, AeroGRID, IGN, and the GIS User Community

No warranty is made by the National Park Service as to the accuracy, reliability, or completeness of these data for individual use or aggregate use with other data.

02 August 2018

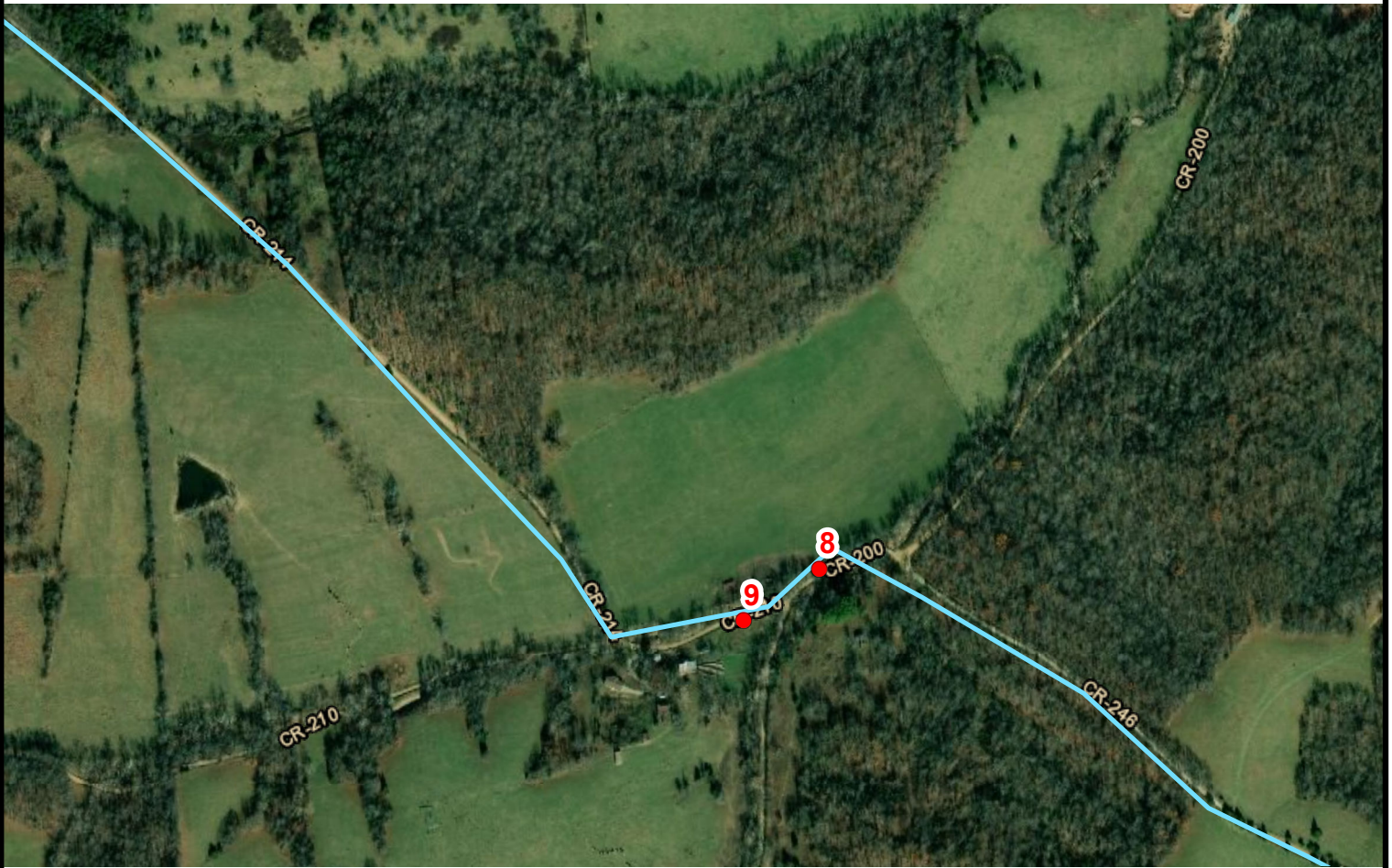
Data Sources: NPS, ESRI



Northern Route - Bollinger County

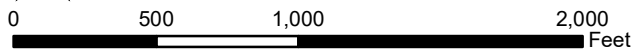
Map: E

DRAFT
INSTALLATION LOCATION:
Go to "All Signs in Plan" page



Service Layer Credits: Esri, HERE, Garmin, © OpenStreetMap contributors
Source: Esri, DigitalGlobe, GeoEye, Earthstar Geographics, CNES/Airbus DS, USDA, USGS, AeroGRID, IGN, and the GIS User Community

Sign ID	Sign Type	Trails	Site Name	Notes
8	Historic_Route_Right	TRTE		
9	Historic_Route_Left	TRTE		



No warranty is made by the National Park Service as to the accuracy, reliability, or completeness of these data for individual use or aggregate use with other data.

Produced by National Trails Intermountain Region

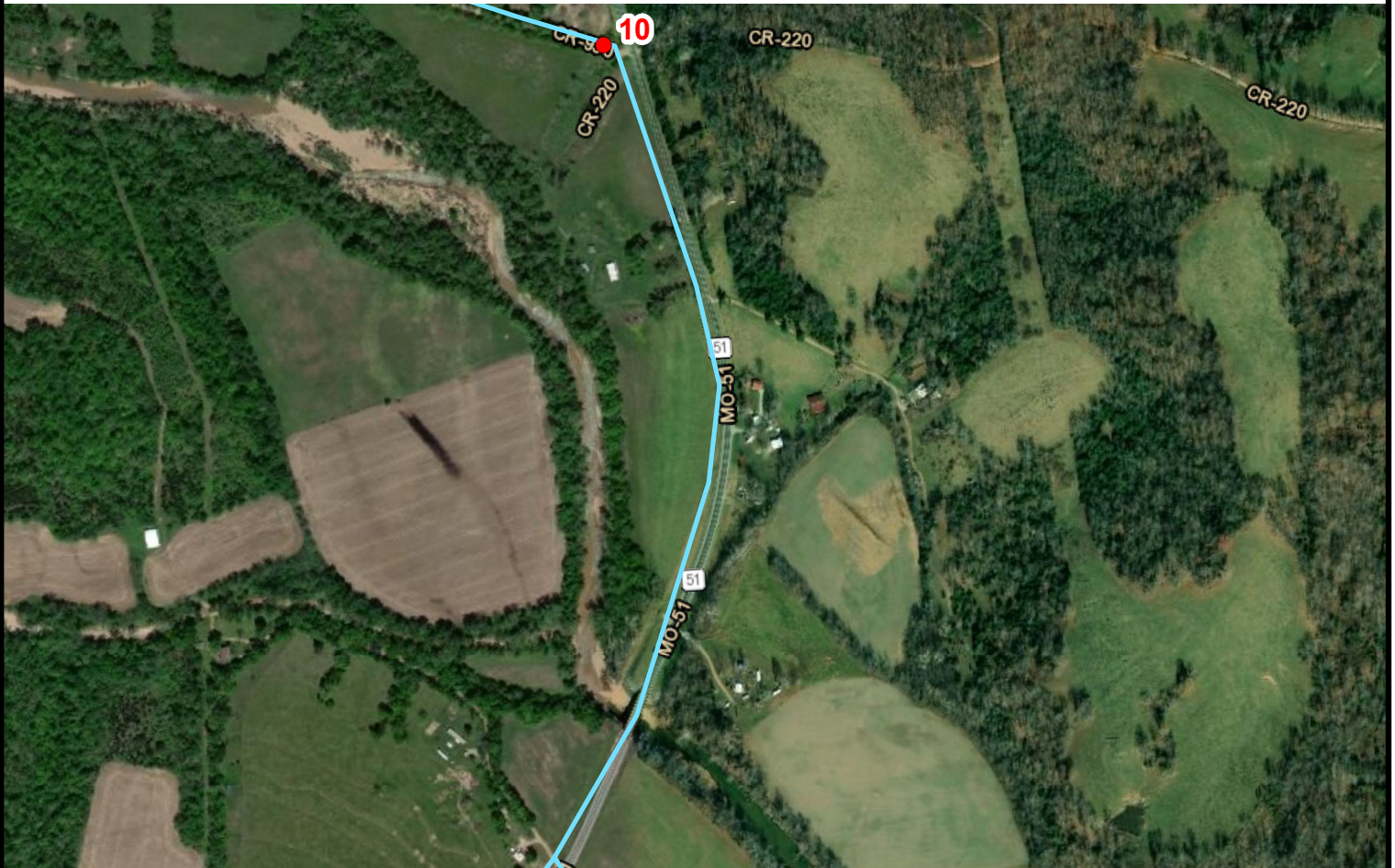
02 August 2018



Northern Route - Bollinger County

Map: F

DRAFT
INSTALLATION LOCATION:
Go to "All Signs in Plan" page



Service Layer Credits: Esri, HERE, Garmin, © OpenStreetMap contributors
Source: Esri, DigitalGlobe, GeoEye, Earthstar Geographics, CNES/Airbus DS, USDA, USGS, AeroGRID, IGN, and the GIS User Community

Sign ID	Sign Type	Trails	Site Name	Notes
10	Historic_Route_Next_X_Miles	TRTE		Next 3 Miles



0 500 1,000 2,000
Feet



No warranty is made by the National Park Service as to the accuracy, reliability, or completeness of these data for individual use or aggregate use with other data.

Produced by National Trails Intermountain Region

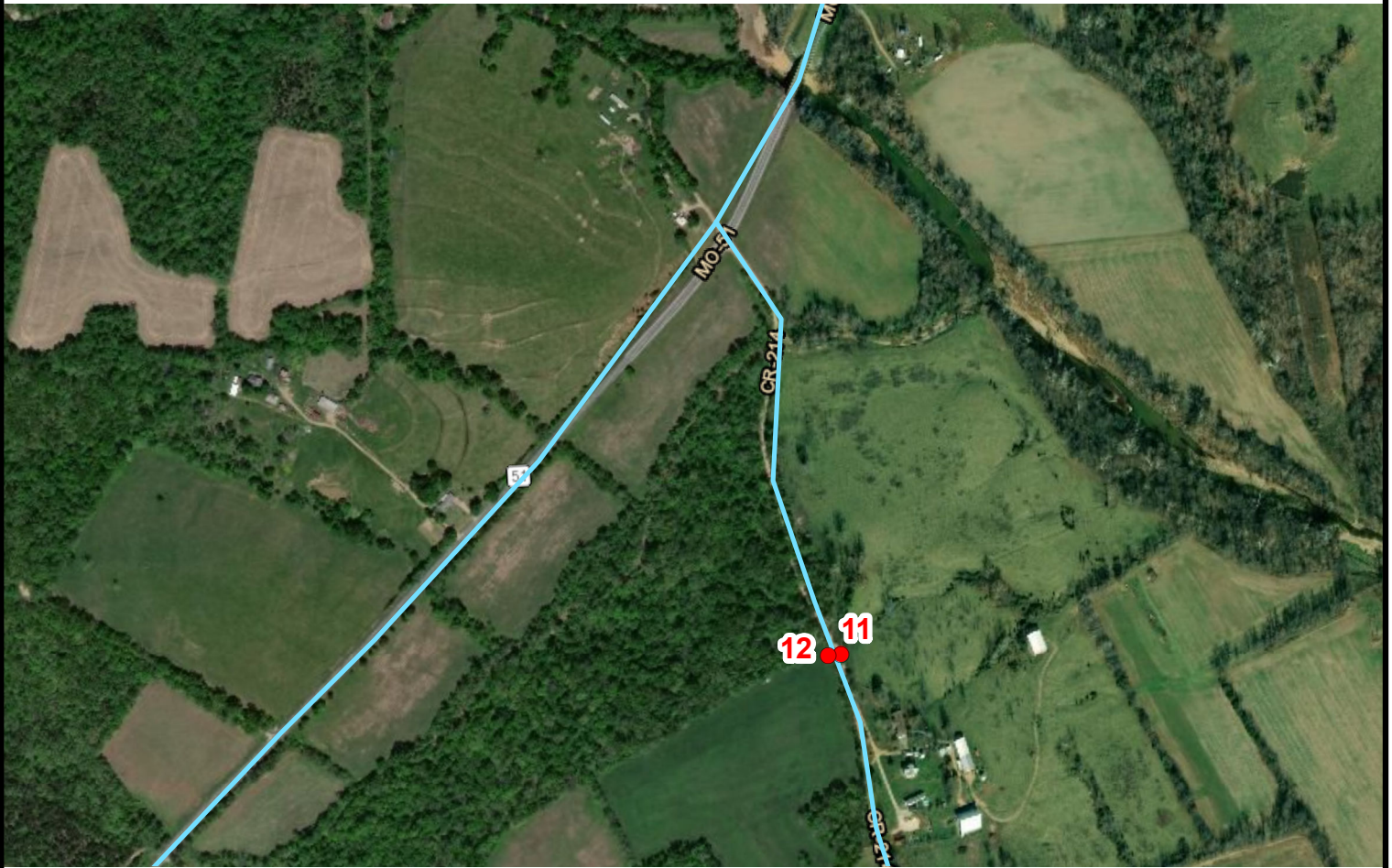
02 August 2018



Northern Route - Bollinger County

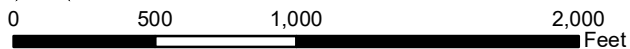
Map: G

DRAFT
INSTALLATION LOCATION:
 Go to "All Signs in Plan" page



Service Layer Credits: Esri, HERE, Garmin, © OpenStreetMap contributors
 Source: Esri, DigitalGlobe, GeoEye, Earthstar Geographics, CNES/Airbus DS, USDA, USGS, AeroGRID, IGN, and the GIS User Community

Sign ID	Sign Type	Trails	Site Name	Notes
11	Historic_Route	TRTE		
12	Historic_Route	TRTE		



No warranty is made by the National Park Service as to the accuracy, reliability, or completeness of these data for individual use or aggregate use with other data.

Produced by National Trails Intermountain Region

02 August 2018



Northern Route - Bollinger County

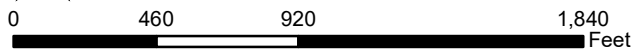
Map: H

DRAFT
INSTALLATION LOCATION:
 Go to "All Signs in Plan" page



Service Layer Credits: Esri, HERE, Garmin, © OpenStreetMap contributors
 Source: Esri, DigitalGlobe, GeoEye, Earthstar Geographics, CNES/Airbus DS, USDA, USGS, AeroGRID, IGN, and the GIS User Community

Sign ID	Sign Type	Trails	Site Name	Notes
13	Historic_Route_Right	TRTE		
14	Historic_Route_Left	TRTE		



No warranty is made by the National Park Service as to the accuracy, reliability, or completeness of these data for individual use or aggregate use with other data.

Produced by National Trails Intermountain Region

02 August 2018



Northern Route - Bollinger County

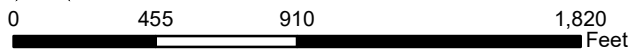
Map: I

DRAFT
INSTALLATION LOCATION:
 Go to "All Signs in Plan" page



Service Layer Credits: Esri, HERE, Garmin, © OpenStreetMap contributors
 Source: Esri, DigitalGlobe, GeoEye, Earthstar Geographics, CNES/Airbus DS, USDA, USGS, AeroGRID, IGN, and the GIS User Community

Sign ID	Sign Type	Trails	Site Name	Notes
13	Historic_Route_Right	TRTE		
14	Historic_Route_Left	TRTE		



No warranty is made by the National Park Service as to the accuracy, reliability, or completeness of these data for individual use or aggregate use with other data.

Produced by National Trails Intermountain Region

02 August 2018



Map	Sign ID	Sign Type	Site Name	Road Name	Direction	Nearest Intersect.	Road Jurisdict.	Notes
A	1	Historic_Route		County Road 228	NW	Located .1 miles east of County Road 226	Bollinger County	
B	2	Historic_Route_Left		County Road 228	NW	Located just south of County Road 230	Bollinger County	
	3	Historic_Route_Right		County Road 228	SE	Located just west of County Road 230	Bollinger County	
C	4	Historic_Route		County Road 228	NW	Located just east of County Road 232	Bollinger County	
	5	Historic_Route		County Road 228	SE	Located just east of County Road 232	Bollinger County	
D	6	Historic_Route		County Road 246	NW	Located just west of County Road 204	Bollinger County	
	7	Historic_Route		County Road 246	SE	Located just west of County Road 204	Bollinger County	
E	8	Historic_Route_Right		County Road 200	SW	Located just northeast of County Road 210	Bollinger County	
	9	Historic_Route_Left		County Road 210	NE	Located just west of County Road 200	Bollinger County	
F	10	Historic_Route_Next_X_Miles		County Road 930	NW	Located just west of State Highway 51	Bollinger County	Next 3 Miles
G	11	Historic_Route		County Road 214	NW	Located .3 miles south of Highway 51	Bollinger County	
	12	Historic_Route		County Road 214	SE	Located .3 miles south of Highway 51	Bollinger County	
H	13	Historic_Route_Right		County Road 930	NW	Located just south of County Road 920	Bollinger County	
I	14	Historic_Route_Left		County Road 920	S	Located just north of County Road 930	Bollinger County	



08/02/2018

Final/Precise Locations to Be Determined On Installation

County/State	Sign ID	Sign Type	Site Name	Road Name	Direction	Nearest Intersect.	Road Juris.
Bollinger County, MO							
	1	Historic_Route		County Road 228	NW	Located .1 miles east of County Road 226	Bollinger County
	2	Historic_Route_Left		County Road 228	NW	Located just south of County Road 230	Bollinger County
	3	Historic_Route_Right		County Road 228	SE	Located just west of County Road 230	Bollinger County
	4	Historic_Route		County Road 228	NW	Located just east of County Road 232	Bollinger County
	5	Historic_Route		County Road 228	SE	Located just east of County Road 232	Bollinger County
	6	Historic_Route		County Road 246	NW	Located just west of County Road 204	Bollinger County
	7	Historic_Route		County Road 246	SE	Located just west of County Road 204	Bollinger County
	8	Historic_Route_Right		County Road 200	SW	Located just northeast of County Road 210	Bollinger County
	9	Historic_Route_Left		County Road 210	NE	Located just west of County Road 200	Bollinger County
	10	Historic_Route_Next_X_Miles		County Road 930	NW	Located just west of State Highway 51	Bollinger County
	11	Historic_Route		County Road 214	NW	Located .3 miles south of Highway 51	Bollinger County
	12	Historic_Route		County Road 214	SE	Located .3 miles south of Highway 51	Bollinger County
	13	Historic_Route_Right		County Road 930	NW	Located just south of County Road 920	Bollinger County
	14	Historic_Route_Left		County Road 920	S	Located just north of County Road 930	Bollinger County

Bollinger County Total #: 14**MO Total #: 14**



08/02/2018

Final/Precise Locations to Be Determined On Installation

Road Jurisdiction	Sign ID	Sign Type	Site Name	Road Name	Direction	Nearest Intersect.
Bollinger County						
	1	Historic_Route		County Road 228	NW	Located .1 miles east of County Road 226
	2	Historic_Route_Left		County Road 228	NW	Located just south of County Road 230
	3	Historic_Route_Right		County Road 228	SE	Located just west of County Road 230
	4	Historic_Route		County Road 228	NW	Located just east of County Road 232
	5	Historic_Route		County Road 228	SE	Located just east of County Road 232
	6	Historic_Route		County Road 246	NW	Located just west of County Road 204
	7	Historic_Route		County Road 246	SE	Located just west of County Road 204
	8	Historic_Route_Right		County Road 200	SW	Located just northeast of County Road 210
	9	Historic_Route_Left		County Road 210	NE	Located just west of County Road 200
	10	Historic_Route_Next_X_Miles		County Road 930	NW	Located just west of State Highway 51
	11	Historic_Route		County Road 214	NW	Located .3 miles south of Highway 51
	12	Historic_Route		County Road 214	SE	Located .3 miles south of Highway 51
	13	Historic_Route_Right		County Road 930	NW	Located just south of County Road 920
	14	Historic_Route_Left		County Road 920	S	Located just north of County Road 930

Bollinger County Total #: 14**Total #: 14**



08/02/2018

Final/Precise Locations to Be Determined On Installation

Map	Sign ID	Sign Name	Sign Type	REFLECT	Cost
A	1	Northern Route - Bollinger County	Historic_Route	High-Intensity	\$ 98
B	2	Northern Route - Bollinger County	Historic_Route_Left	High-Intensity	\$ 0
	3	Northern Route - Bollinger County	Historic_Route_Right	High-Intensity	\$ 0
C	4	Northern Route - Bollinger County	Historic_Route	High-Intensity	\$ 98
	5	Northern Route - Bollinger County	Historic_Route	High-Intensity	\$ 98
D	6	Northern Route - Bollinger County	Historic_Route	High-Intensity	\$ 98
	7	Northern Route - Bollinger County	Historic_Route	High-Intensity	\$ 98
E	8	Northern Route - Bollinger County	Historic_Route_Right	High-Intensity	\$ 0
	9	Northern Route - Bollinger County	Historic_Route_Left	High-Intensity	\$ 0
F	10	Northern Route - Bollinger County	Historic_Route_Next_X_Miles	High-Intensity	\$ 123
G	11	Northern Route - Bollinger County	Historic_Route	High-Intensity	\$ 98
	12	Northern Route - Bollinger County	Historic_Route	High-Intensity	\$ 98
H	13	Northern Route - Bollinger County	Historic_Route_Right	High-Intensity	\$ 0
I	14	Northern Route - Bollinger County	Historic_Route_Left	High-Intensity	\$ 0



08/02/2018

Final/Precise Locations to Be Determined On Installation

Trail(s)	Sign Type	Site Name(s)	REFLECT	Total #	Cost
TRTE					
	Historic_Route		High-Intensity	7	\$ 686
	Historic_Route_Left		High-Intensity	3	\$ 0
	Historic_Route_Next_X_Miles		High-Intensity	1	\$ 123
	Historic_Route_Right		High-Intensity	3	\$ 0

TRTE Total: \$809

Cost Estimate Sorted by County/State



08/02/2018

Final/Precise Locations to Be Determined On Installation

County/State	Sign Type	Reflectivity	Total #	Cost per Sign Type
Bollinger County, MO				
	Historic_Route		7	\$ 686
	Historic_Route_Left		3	\$ 0
	Historic_Route_Next_X_Miles		1	\$ 123
	Historic_Route_Right		3	\$ 0
			Bollinger County Total:	\$809
			MO Total:	\$809



08/02/2018

Final/Precise Locations to Be Determined On Installation

Road Jurisdiction	Sign Type	REFLECT	Total #	Cost per Sign Type
Bollinger County				
	Historic_Route	High-Intensity	7	\$ 686
	Historic_Route_Left	High-Intensity	3	\$ 0
	Historic_Route_Next_X_Miles	High-Intensity	1	\$ 123
	Historic_Route_Right	High-Intensity	3	\$ 0
Bollinger County Total:				\$809



08/02/2018

Final/Precise Locations to Be Determined On Installation

Sign Status	Sign ID	Sign Type	REFLECT	Cost per Sign Type
Proposed				
	2	Historic_Route_Left	High-Intensity	\$ TBD
	3	Historic_Route_Right	High-Intensity	\$ TBD
	8	Historic_Route_Right	High-Intensity	\$ TBD
	9	Historic_Route_Left	High-Intensity	\$ TBD
	13	Historic_Route_Right	High-Intensity	\$ TBD
	14	Historic_Route_Left	High-Intensity	\$ TBD
	1	Historic_Route	High-Intensity	\$ 98
	4	Historic_Route	High-Intensity	\$ 98
	5	Historic_Route	High-Intensity	\$ 98
	6	Historic_Route	High-Intensity	\$ 98
	7	Historic_Route	High-Intensity	\$ 98
	11	Historic_Route	High-Intensity	\$ 98
	12	Historic_Route	High-Intensity	\$ 98
	10	Historic_Route_Next_X_Miles	High-Intensity	\$ 123

Proposed Total: \$809



Trail of Tears National Historic Trail sign standards

General sign specifications

- Anodized aluminum backing, with high intensity grade reflective sheeting
- White text and border on a brown background
- Minimum 4" text height on all signs, fonts NPS Rawlinson Roadway (serif) and Series E 2000 (sans-serif)
- Holes pre-drilled per installer instructions or drilled on site by installer

Individual sign types All images are not to scale



Historic Site Name standard directional signs

- 36" width x 48" height main panel
- 0.5" white border on main panel
- 21" width "x 15" height MUTCD arrows
- 4" text height
- 13" NHT logo
- Site name may include 1, 2 or 3 lines of text
- Panels with 1 or 2 lines of site name text will use a 17" logo as shown below



Trail of Tears National Historic Trail standard signs based on this model:





Site Identification/Entrance signs

- Not for roadway use
- 72" width x 24" height site name panel
- 18" height standard lower national historic trail panel
- 14" national historic trail logo
- Can be produced in smaller dimensions based on site owner/manager specifications
- Upper site name panel can be customized with graphics at site owner/manager request
- Font sizes on upper panel may vary based on content
- *Approximate translation "The Trail Where They Cried"

NHT trail name panels may also be added to existing signs, or the site name panel can be customized:



Example of NHT name panel incorporated into existing sign at Coronado Historic Site (Bernalillo, NM on the El Camino Real de Tierra Adentro NHT), left. Cimarron New Town site identification sign (Cimarron, NM, on the Santa Fe NHT) with custom site name panel, right.