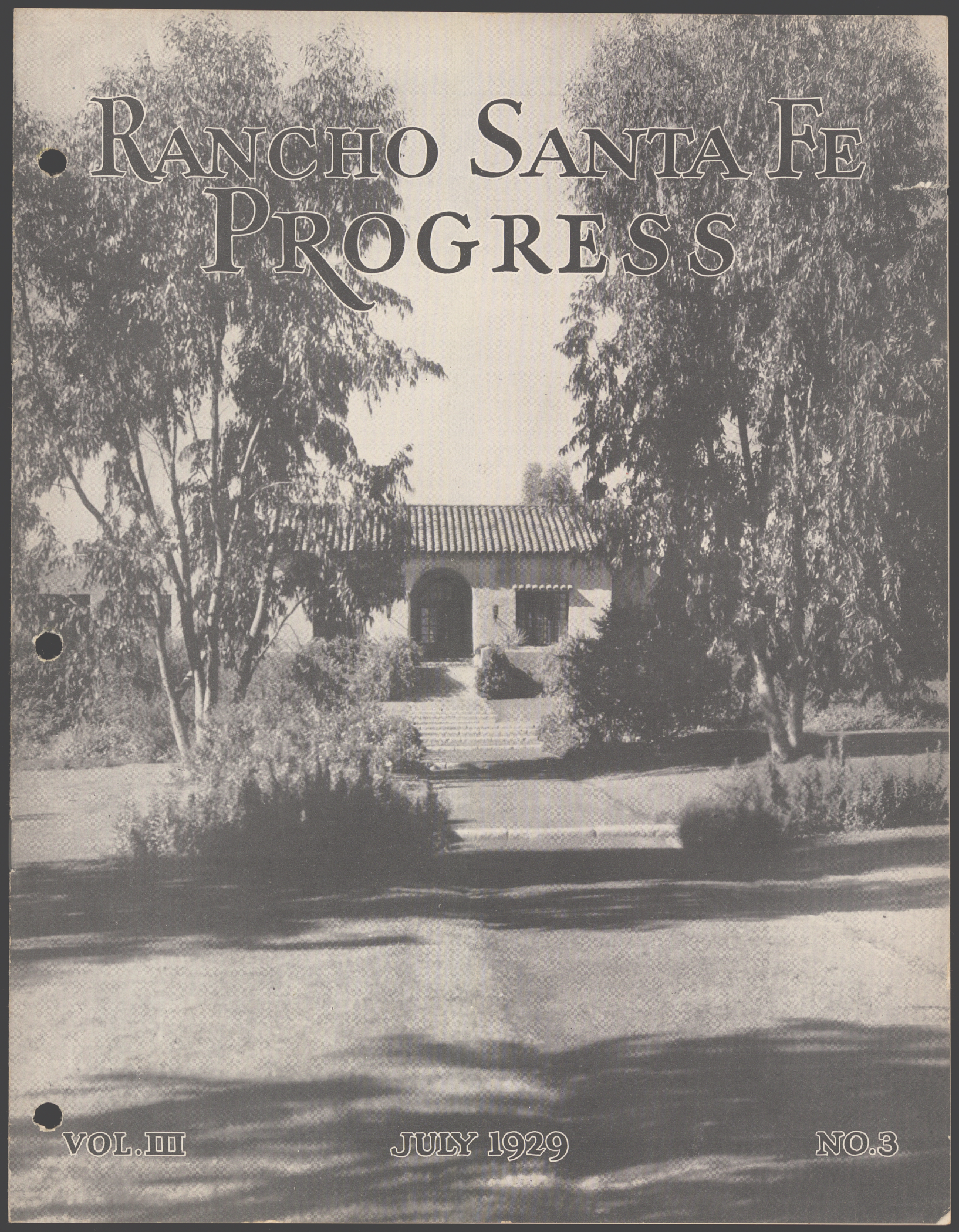


• RANCHO SANTA FE PROGRESS



VOL. III

JULY 1929

NO. 3

Scotty Chisholm ENTHUSES

Impressions of the Associate Editor Country Club Magazine

When Max Behr finished his work and turned over the Rancho Santa Fe golf course to President Barton Millard and his fellow members as a finished article, he handed over something new and unique and quite outstanding in the golfing world of the Pacific Coast.

He turned over a golf course that combined all the newest and most advanced theories of modern golf architecture plus pleasurable for both expert and beginner.

I know that Mr. Behr gave an entire year of his unquestioned skill and time to the Rancho Santa Fe course and his handiwork today stands out as one of the most delightfully laid-out courses to be found anywhere.

I do not think it is a championship test in any sense of the word, although I believe that added distance and the building of additional hazards could readily make it so. I don't imagine that Mr. Millard nor any of his members want to claim their delightful course to be one of championship caliber. I hope not. It affords me much amusement when I read of this club and that sending forth columns of fictitious publicity about their 6300-yard championship course being groomed for such and such an event. It all is so much hokum.



This is what No. 13 looks like as you address your ball for your second shot. Call it a barranca, arroyo, wash, creek, draw, gully, or what you will. It is a long 200-yard poke to the green, and if you aren't feeling lucky, you had better go around. But you surely feel like a golf player if you try it and make it.

GOLF

Course Strategy

Explained by MAX BEHR

At Rancho Santa Fe there has been put into effect that new principle of golf course design which permits the average golfer—even the beginner—to enjoy his round without constantly being in trouble and yet at the same time offers the expert a serious and exciting test of golf. Not a single hazard has been constructed with the idea of penalizing errors of skill such as top, pull or slice. On the contrary the hazards are located with the sole object of defending the hole, and the golfer who fails to knock down their defense must naturally suffer. But he who is unable to positively attack the strategy of the hazards has always an optional safe way of playing.

The course is peculiar in that the holes follow a winding barranca up and down, crossing and recrossing it, and yet at no time interfering with one another. The first and tenth tees are at the clubhouse. In the round there is all the variety that can be attained by the proper spacing of distances, the four short holes being the third, seventh, fourteenth and seventeenth and the short-drive and pitch hole coming at the tenth. At full length ten of the holes will be 400 yards and over, and as six of these must be played against a strong prevailing wind their

(Continued on page 8)

Rancho Santa Fe reminds me much of the lovely Bel Air Country Club in that it impresses one as a charming golfing test, devoid of devastating tee carries and herculean second shots which belong only to the professional player.

Max Behr put an awful lot of thought and serious study into his work at Rancho Santa Fe. His artistry can be seen at every hole. Who can play his second shot to No. 13, as it ought to be played, without getting a thrill, no matter if he makes the green or not? It calls for a glorious second shot—and only a glorious shot is rewarded.

I understand that several of Rancho Santa Fe members rather dislike this hole and there is a possibility of its being changed in the absence of Mr. Max Behr. Personally, I don't mind saying that it is, next to No. 16, my favorite hole. It plays better than ever when the markers are set at the back of the tee. That affords a chance for a long tee shot without getting into the mucky stuff that lies ahead and leaves one in a perfect position for a heroic second.

No. 16 did not seem to me to be anything unusual until I played it the second time. I mused it up on my

(Continued on page 7)

Sherman Paddock LIKES IT

COUNTRY CLUB MAGAZINE EDITOR Gives Praise

California golfers always look forward with an unusual degree of interest to playing for the first time over a course built under direction of Max Behr. Mr. Behr has individual ideas in the matter of golf links construction and his work is a never-ending topic of discussion among followers of the game. They know he will try something just a little bit different and they always are curious to see the results of his latest efforts.

And so it was that I accepted with much pleasure the invitation to try out his latest creation—the Rancho Santa Fe golf course. Anticipation often is more enjoyable than realization, but this wasn't true of my visit to Rancho Santa Fe. I found there a golfing layout equal to any I have seen. It was even better than I expected, and I expected much, for I had been told that Mr. Behr was given free rein in the expenditure of money, and told to produce the best, regardless of expense.

I leave it to others to describe Mr. Behr's achievement in detail. I merely want to say that I never enjoyed a

more interesting round of golf. The holes provide great variety and call for mental agility as well as shot-making ability. The chap who uses his head as well as his clubs will be the one to turn in the best scores at Rancho Santa Fe.

The feature that will impress most visitors is the scarcity of sand traps. Mr. Behr believes this thing of digging holes in the ground and filling them with sand at intervals of every few rods is greatly overdone and I agree with him. Strategy demands a certain number of traps, but it is all too easy to overdo the thing. Mr. Behr provides penalties for misplaced shots without the use of an excessive number of bunkers. Anybody can dig holes and fill them with sand but it takes a master mind to make a course as difficult as it should be and at the same time not clutter up the landscape with too many traps. At Rancho Santa Fe, Mr. Behr has demonstrated his ability to do this.

(Continued on page 6)

What

The GOLF WRITERS

On the Newspapers

SAY about OUR COURSE

Following are excerpts from several articles which have appeared in various newspapers about the Rancho Santa Fe course:

Darsie L. Darsie, Golf Editor Los Angeles Express:

"It is a golf course of championship length and of championship character. It is a course of tempting carries—of second shots that seem impossible, of greens which roll imperceptibly to the right and left. The holes are intensely interesting."

Maxwell Stiles, Golf Editor Los Angeles Examiner:

"Rancho Santa Fe is a good test of championship golf and at the same time provides no terrors for the duffer. The greens are well placed and each is manifestly different from all of the others. It is a course that will hold your interest from the start. It is a long valley of green, majestic in its setting and costly in its building."

(Continued on page 5)



The Golf Shop and Caddy House for the Rancho Santa Fe Country Club is being made to suffice for a clubhouse as well for the time being. And suffice it does, in a most complete and comfortable manner.

In Temporary CLUB QUARTERS

Rancho Santa Fe Golf Layout Now Complete

With its clubmaker's shop and temporary clubhouse quarters practically finished and its fairways thriving under the combined potency of Rancho Santa Fe sunshine and an effulgent quota of water, the Rancho Santa Fe Country Club is now functioning in an orderly and auspicious manner. The new structure, the particular pride of President Barton Millard, will be ready for use on or before August 1st. It is set snugly on the edge of the barranca below the site of the main clubhouse-to-be and looks directly down on the first tee, which is reached by a rustic bridge.

At one end is a clubmaker's shop, 15x30 feet in size, with a tier of racks for clubs, buffer and other facilities for the clubmaker.

Along the center of the building is the golf shop and grill. A combination refrigerator and counter extends across one end. Here sandwiches and cold drinks will be served. Golf balls and other necessities of the royal and ancient game will be found on sale here. This room is 16x28 feet in size and in one corner is an attractive fireplace. It connects up with the main locker room where twenty-five lockers are to be installed for the use of out-of-town players and where the men's showers are found.

The grill also opens onto a long terrace, 16x44 feet in size, where bridge tables are to be placed for social diversion and for dining purposes.

A ladies dressing room and a long distance telephone booth complete the list of the club's facilities. The shop is indeed a very attractive and useable building, one that should suffice for all the needs of the club for sometime to come.

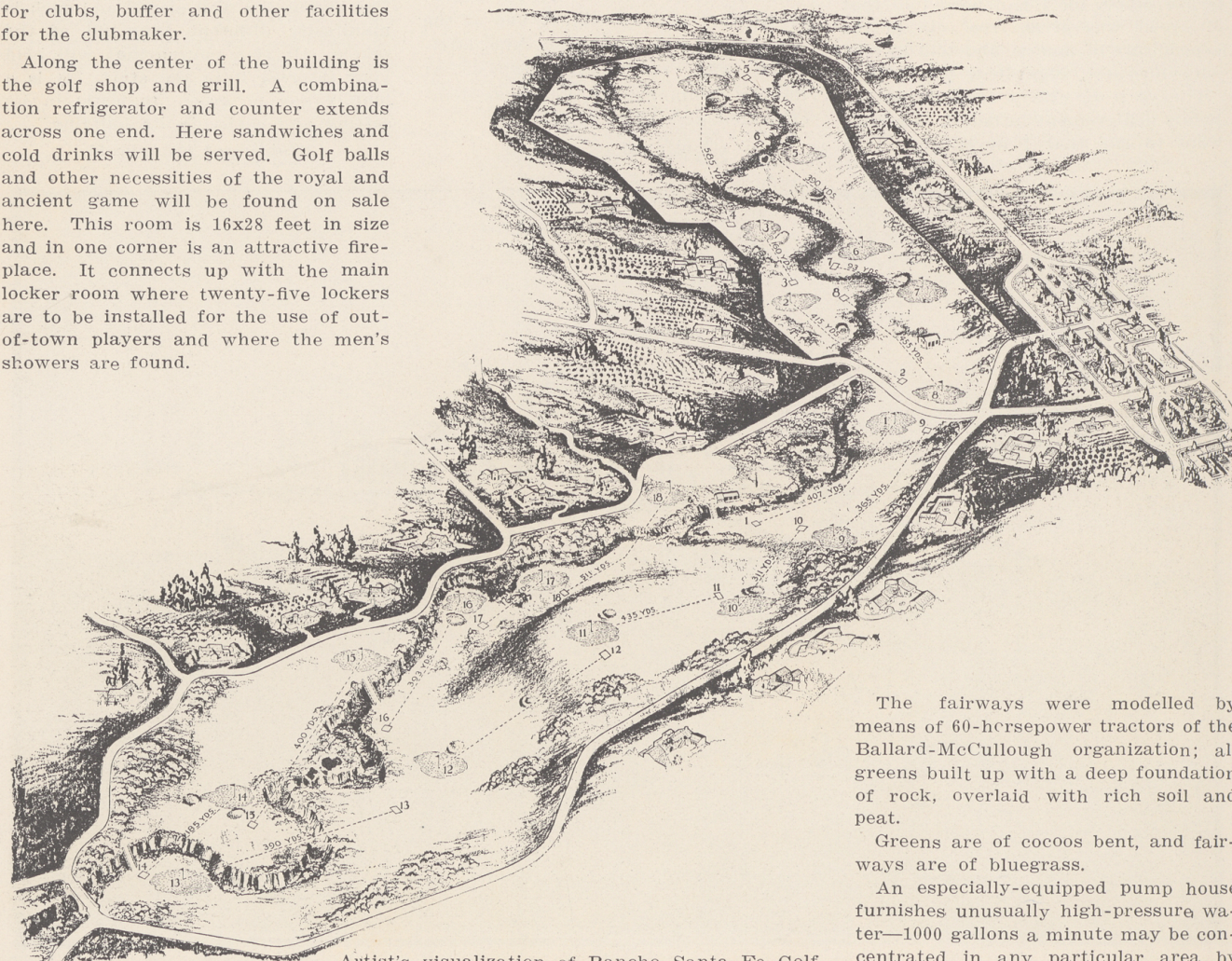
SCORE CARD

Hole	Out			Ladies' Handicap		
	Yards	Par	cap	Par	cap	
1	407	4	13	5	13	
2	415	4	3	5	3	
2	160	3	17	3	17	
4	585	5	5	6	5	
5	437	4	9	5	9	
6	390	4	11	5	11	
7	93	3	15	3	15	
8	455	5	1	5	1	
9	365	4	7	4	7	
Out	3307	36	41	—	—	

Hole	In			Ladies' Handicap		
	Yards	Par	cap	Par	cap	
10	311	4	12	4	12	
11	435	4	2	5	2	
12	437	4	8	5	8	
13	390	4	4	5	4	
14	185	3	16	3	16	
15	400	4	14	5	14	
16	393	4	6	5	6	
17	166	3	18	3	18	
18	511	5	10	6	10	
In	3228	35	41	—	—	
Out	3307	36	41	—	—	
Total	6535	71	82	—	—	

OTHER PHYSICAL FACTS

Championship length, 6792 yards.
Automatic snap-valve sprinkling system over the entire course, with 1157 outlets, irrigating 120 acres of fairway.
Course built by Max Behr at a cost of approximately \$220,000.
Nearly thirteen miles of pipe, ranging in size from 12-inch to 1 1/4-inch mains.



Artist's visualization of Rancho Santa Fe Golf Course as it will appear when the estates surrounding it are built up.

The fairways were modelled by means of 60-horsepower tractors of the Ballard-McCullough organization; all greens built up with a deep foundation of rock, overlaid with rich soil and peat.

Greens are of cocoos bent, and fairways are of bluegrass.

An especially-equipped pump house furnishes unusually high-pressure water—1000 gallons a minute may be concentrated in any particular area by means of the water system.

RANCHO SANTA FE PROGRESS

\$600,000 ROAD PROGRAM OKed

Published Monthly by

Rancho Santa Fe Corporation
911 Rowan Bldg., ME-0024
Los Angeles, California

Project Headquarters
Administration Bldg.
Rancho Santa Fe, San Diego County
California

Officers and Directors

Rancho Santa Fe Corporation

- | | |
|---|-----------------|
| NELS GROSS | PRESIDENT |
| Pres. District Bond Co. | |
| W. HERBERT ALLEN, JR. | VICE-PRESIDENT |
| Vice-Pres. & Director, Title Ins. & Trust Co. | |
| ELLIS BISHOP | VICE-PRESIDENT |
| Pres. Ellis Bishop & Co., Pasadena | |
| OTIS H. CASTLE | SECY. & TREAS. |
| Dryer, Castle, McConlogue & Richards | |
| COL. ED. FLETCHER | DIRECTOR |
| San Diego | |
| WM. B. HUBBARD | DIRECTOR |
| Pres. Jones, Hubbard & Donnell, Inc. | |
| J. E. SLATER | DIRECTOR |
| Pasadena | |
| S. R. NELSON | PROJECT MANAGER |
| P. C. HOSMER | SALESMANAGER |

What the Golf Writers Say About Our Course

(Continued from page 3)

George Cecil Cowing, Golf Editor Pasadena Star-News:

"There are many interesting holes in the layout. The course is admirably situated in rolling country, yet no fatiguing climbs are required. It is a good test for anyone's golf."

WILSON HOME BEING BUILT

Following favorable action by the San Diego County Board of Supervisors, Rancho Santa Fe is to inaugurate a \$600,000 road improvement program which will include regrading, widening, paving and tree planting for a total of more than 40 miles of highway.

For the first time in the history of San Diego County, no protests either written or oral were voiced at the public hearing held by the Board of Supervisors.

Road engineers say the contract should be let early in August and construction work should begin immediately thereafter. Rights-of-way have already been secured in order to eliminate difficult curves. Culverts and drains are to be installed, wide shoulders on both sides of the pavement are to be graded to the level of the road and all will be beautified with the planting of thousands of trees and shrubs.

The program calls for the paving of five miles of highway with concrete, more than sixteen miles with two and one-half inch oil macadam, one mile with five-inch oil macadam, and two and one-half miles with asphaltic concrete. Most of the roads will be paved 20 feet wide. The main street running through the Civic Center of Rancho Santa Fe will be graded to its full width of 84 feet for a full mile.

(Continued on page 7)

A particularly charming small home is now being constructed for the Misses Alice L. and Florence E. Wilson on their estate off La Valle Plateada. The home was designed by Architect Lillian J. Rice.

The dwelling has been admirably designed to suit the sloping hillside on which it rests and affords a splendid example of the attractive lay-out that can be accomplished on grounds that lie below the street or road.

From the road one enters a walled patio, on the side of which is a fountain and pool done with tiles depicting the story of Don Quixote.

Across the front of the home is a covered porch from which the front door leads directly into the living room. This is a large, comfortable room with tiled floor and fireplace. On the opposite side is a terrace, from the base of which the hillside breaks downward rather sharply. This slope will be gorgeously planted to flowers and shrubs. The view from this terrace, with the flower garden intimately near and Black Mountain directly ahead in the distance, will be most attractive.

Along an ell from the end of the living room are found two owners' rooms and baths. These suites look out upon the front patio.

At the opposite end of the living room is found the dining room, on a

(Continued on page 8)



Here is your second shot on No. 18 after your 200-yard drive. You have 311 yards still to go. You may cross the barranca now or drive straight up toward the clubhouse, then pitch across to the green on your third, and maybe get a birdie 4.

COME ON IN to the *BEACH CLUB*

—NEXT MONTH

Rancho Santa Fe is to have a Beach Club, where the joys of surf and sand may be indulged with maximum convenience and comfort.

The Rancho Santa Fe Corporation, owning three-fourths of a mile of the cleanest beach in California, is erecting a clubhouse on a strategically-located V-shaped plot of ground between the Coast Highway and the ocean and will install adequate beach club facilities, such as showers, dressing rooms and the like.

There will be a large veranda with tile floor on the ocean side, which can be used for dancing and other social events. No meals will be served at the club, but warming plates and refrigerator facilities are being installed for the convenience of those who desire to bring lunches and drinks. One room of the club will be devoted

to an information bureau maintained by the sales department of the corporation, to answer motorists' questions about Rancho Santa Fe.

The Rancho Santa Fe Beach Club will extend the privilege of membership to residents of Rancho Santa Fe only. A nominal yearly charge of \$25 will be made to help defray overhead charges. Temporary guest cards will be extended to visitors at La Morada; otherwise all outsiders will be strictly barred.

The need for a center for community social life has been felt for some time, and the Beach Club, which at once provides a place for general social affairs and aquatic sports, seems a most happy solution.

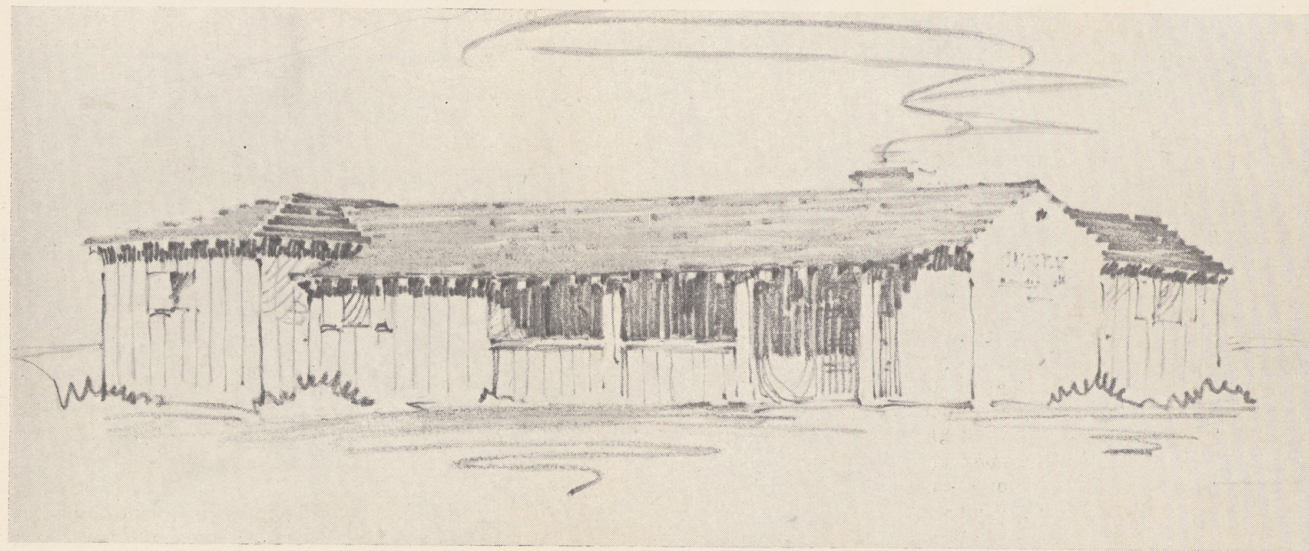
The attractive clubhouse, of typical California architectural style, was designed by Architect Lilian J. Rice.

Sherman Paddock Likes It

(Continued from page 3)

The new golf course will prove a tremendous asset to Rancho Santa Fe and will directly result in enhanced real estate values just as soon as its merits become generally known. I predict that inside the next three years 75 per cent of the golf tournaments now held in connection with state, na-

tional and coast conventions on the Monterey Peninsula will be held in the San Diego district, from Rancho Santa Fe south. This will be the natural result of providing four first-class courses in that district. Rancho Santa Fe, La Jolla, San Diego Country Club and Agua Caliente are the four. The attractions of Agua Caliente will be no small factor in influencing a decision in favor of the Rancho Santa Fe territory for these tournaments.



Residents of Rancho Santa Fe will soon have their own exclusive Beach Club, on the property of the Rancho Santa Fe Corporation north of Solana Beach.

Landscape Notes

By GLENN A. MOORE

Rancho Santa Fe owners never stop planting and herein lies the fun. When you live on a city lot and desire to change your garden you dig up and replant. In Rancho Santa Fe you merely take in a little more area and plant that. Your idea is growing while you still have your old planting.

* * *

Barton Millard is planning more garden—marking his dividing line of orchard and garden by hedging—which serves two purposes, wind break and dividing line.

* * *

C. A. Shaffer continues to plant. I don't suppose he will ever be through. He has gone in for lily pools now. I hope someone builds a small lake somewhere and plants heaps of water lilies. It would make a gorgeous sight.

* * *

The clearing on the Stackhouse property gives the remaining trees and shrubs a splendid opportunity for growth. And with water irrigating this wooded area—the Stackhouses are truly to be envied for their start in planting.

* * *

Mrs. A. W. Gilbert has built a new road in from Via del Santa Fe—a very beautiful drive leading up to the front of their house—and this is why I say Mrs. Gilbert. Mr. Gilbert is in the East and Mrs. Gilbert is planning to surprise him when he returns by bringing him home over this new drive—so please don't write and warn him.

Excellent Inn Service

La Morada, the guest-house at Rancho Santa Fe, provides excellent hotel accommodations for golfers from other communities who may wish to play the Rancho Santa Fe course. La Morada is a delightful, quiet place with bright, cheerful rooms and excellent meal service. Rates are extremely reasonable. Because of the limited number of rooms at La Morada, prospective guests are urged to make reservations well in advance by telephoning METropolitan 0024 in Los Angeles or Rancho Santa Fe 2531.

The Carl Bertschinger orchard, Lot 3, Block 11, of five-year-old trees produced 818 field boxes of Valencia oranges this year—approximately two boxes per tree.

* * *

Mr. and Mrs. Nels Gross spent several days at La Morada in June and again at the July Fourth holidays.

* * *

Mr. and Mrs. Eugene Consigny and daughters of Beverly Hills were at La Morada for a few days last month while inspecting the progress of their estate.

* * *

Mr. and Mrs. John Robertson of Los Angeles, were visitors at La Morada last month. Mr. Robertson is a director at the Metro-Goldwyn-Mayer studios.

* * *

The fame of La Morada's cuisine is attested by a letter received by Mrs. Barton, the hostess, from Mr. Frank E. Parks of Pueblo, Colorado, who purchased property at Rancho Santa Fe several months ago and who visited here last month. On his return home his praises of the avocado cocktails served at La Morada were so glowing that Mrs. Parks induced him to write immediately for the recipe.

Road Program OKed

(Continued from page 5)

Concrete curbs and gutters are to be installed in the Civic Center and many of the service roads leading to the various country estates will be beautified in a rustic manner with grouted curbs and gutters of native stone.

This important improvement coupled with the grading and paving of the Rose Canyon Road between the Rancho Santa Fe area and San Diego will give Rancho Santa Fe one of the finest networks of highways to be found anywhere. The Rose Canyon project will cut off approximately six miles between Rancho Santa Fe and San Diego and place the project on a close-in suburban basis from the latter city.

Orchardists Are Busy

Ballard and McCulloch report the following work completed and in progress:

J. B. Marks Estate—Twelve acres of Valencia oranges, planted in June. Nursery stock from Douglas Fairbanks Nursery, Rancho Santa Fe.

John Cunningham Estate—Seven of Valencia oranges, planted in June. Nursery stock from the Douglas Fairbanks Nursery, Rancho Santa Fe.

R. E. Badger reports the following development:

Ellis Bishop Estate—Approximately three acres under overhead irrigation, system installed by Elliott and McKenna. Fuerte avocados were planted on a 44 foot square. In one portion of the orchard the Valencias were replaced with mixed varieties of citrus and avocados selected by G. G. Tanner, of the Badger-Tanner Nurseries.

Clarence E. Cook Estate—Six acres and a half of Valencia oranges. This planting is in addition to the five-year-old avocado grove consisting of about five and one-half acres. The trees for this planting were fine thrifty one-year-old buds raised locally by the Badger-Tanner Nurseries.

Scotty Chisholm Says:

(Continued from page 2)

first trip around, but by playing it soundly and warily on my second visit, I was much impressed with the care and vigilance Behr exercised in the jealous manner in which he guarded that green.

He has locked it with a stout lock and key and unless you happen to have the key with you, you will find your way to the green strewn with many cleverly conceived vicissitudes which only an artist of Max Behr's skill could create. The work Behr put into the No. 16th hole, from the tee to the green, is worthy of international recognition.

My good friend Mr. Millard expected me to write a hole-by-hole description of the course, but that must wait for another time. Besides, the way I would want to play the course would not suit the Honorable President and the way he would want to play each shot, I imagine, would not be to my liking.

I like to write about golf holes—such holes as I found at the Rancho Santa Fe course,—because they are most interesting to me. The contour of the land was made very golfable through the ingenuity of Mr. Behr. He

used many tractors to marvelous advantage.

I think it was Mr. Nelson who told me there never was a horse on the course at any time.

I particularly noticed the unusual formation and the excellence of the putting textures of the greens. They are the equal of any I have seen anywhere and as time goes on, they even will improve. They are as true as steel and, I think, the maximum of putting perfection, as Cocoos bent usually is.

I like the second nine better than the first, not because they are easier, but I think the second shots have more individuality and character. No. 10 is not so hot, but the other holes on the second nine are outstanding. No. 10 measures only 311 yards with the prevailing wind in your face, but the golf architect experiences more worry trying to make a hole of this distance worth anything than any other part of his art. He abhors a 300-yarder.

I had a lot of fun playing Rancho Santa Fe with the boys and I hope I'm invited down again soon. It was pleasurable in the extreme and never tiring at any stage. The mere fact that I can recall almost every shot I made on my second trip around with George Cowing of Pasadena convinces me of the sterlingness of the Rancho Santa Fe course. Listless holes leave listless impressions.

Go tee up your ball on No. 12 and tell me you are not thrilled by the magnificence of your surroundings and are not tempted into herculean efforts to wallop that ball the veritable mile and a quarter! You can't help it. I know my friend Echternach ripped his coat of blue trying to tear the cover off a Colonel Pro the day I played with him. But he got home with a mashie at that.

There is a lot of fine golf in the last hole if one plays it the way Behr intended it to be played. He teases you to play as near the barranca as possible on your second shot and leaves you a very wary approach to a green that might be a wee bittie more visible from down below. However, it's not unfair. It is a grand finishing hole where the long-hitter may get home in two wallops and get his birdie.

Mr. and Mrs. H. A. Comer of Los Angeles were at Rancho Santa Fe last month to inspect their property. They were particularly delighted with the progress of their peach orchard.

Typical Estates Available

For \$2340—Lot 58, Block 26, 1.17 acres, equal in size to 5 or 6 city lots. Looks down on golf course. Electric lines in conduit, pressure water, macadamized roadway.

For \$3350—Lot 47, Block 26, 1.34 acres, equal in size to 6 or 7 city lots. Wonderful views of golf course and mountains. Fine opportunity for family orchard and

landscaping. Pressure water, underground electric lines.

For \$8350—Gentlemen's country estate combining Lots 79, 78, 77 and 76, Block 18, 4.57 acres, equal in size to 20 city lots. Faces directly on golf course. Gorgeous views.

For \$7575—Lots 81, 82, Block 18, 4.52 acres. Faces directly on

golf course and paved road. Near Civic Center.

For \$8600—11.62-acre estate, parts of Lots 5 and 6, in Block 36. Partly planted to thrifty young walnut grove. Pipe lines installed for additional planting. Beautiful building site on slightly knoll with splendid view of ocean. Building restriction only \$6,000.

Many other and varied large and small Country Estates, ranging from \$1500 upwards. Valuations that insure rapid enhancement.

Terms: One-fourth cash, balance in three equal annual payments. Interest 7 per cent on deferred payments.

La Jolla: A. H. Barlow
7852 Girard St., La Jolla 550

San Diego: Ed Fletcher Co.
1024 Ninth St., Franklin 2604

Pasadena:

Ellis Bishop
& Co.

26 N. Marengo
Terrace 3163

LOS ANGELES SALES OFFICE

Rancho Santa Fe Corporation

911 Rowan Bldg., 5th and Spring

Santa Barbara: Don B. Sebastian, 818 State St., Phone 4513

Phone ME 0024

Beverly Hills:
J. Earlton Moore
& Sons
1440
Santa Monica
Blvd.
Oxford 5608

Wilson Home Being Built

(Continued from page 5)

slightly higher floor level. The guest room is on a still higher floor level. Underneath it, and approached by a winding drive encircling the house, is the garage.

The kitchen, laundry, maid's room and bath open out upon a separate walled-in service yard, in the corner of which is an outdoor incinerator. An oil-burning hot-air heating plant is being installed.

The Wilson home will be of conventional stucco exterior, with red tiled roof. It will have a very suitably broken roof line to give it distinctive character. Balconies, wooden shutters with iron strap hinges flanking the windows, and specially designed wooden gates in the patio walls, will aid in this. One may expect further personal touches by the Misses Wilson, to give their home individuality. They have been planting and planning for several years, their palms and acacia and eucalyptus trees making their grounds already one of the beauty spots of Rancho Santa Fe. Landscaping work is by Glenn A. Moore.

Golf Course Strategy

(Continued from page 2)

playing length will be greater than their yardage would supposedly demand.

The construction of some of the holes has been on a grander scale than ever before attempted. This was necessary in order to attain golfing conditions which would blend with their surroundings. There are few situations which do not permit the building of a green, but to make it part of its surroundings requires that these be also dealt with and modified if they are to become a part of the new dispensation.

The greens have all been tiled with the drains twelve feet apart. Tile draining is the greatest factor in turf insurance. They have been sown to cocoos bent, and the fairways and tees to German mixed bent and European bluegrass. Indeed, into the whole course from the standpoint of design and upkeep there has been incorporated those fundamental principles which assure economy of upkeep and permanency of the architecture.

Mrs. Glenn A. Moore entertained at her home on July 3rd for a group of friends.

Art Jury Approvals

PRELIMINARY SKETCHES:

Entrance portals to the property of Mr. and S. H. Bingham, submitted by Glenn A. Moore, landscape architect.

WORKING DRAWINGS AND SPECIFICATIONS:

Tennis Court for Mr. Ellis Bishop, submitted by Glenn A. Moore, Landscape Architect.

Caddy House for the Rancho Santa Fe Country Club, submitted by Lilian J. Rice, Architect.

Residence for Misses Florence E. and Alice L. Wilson, submitted by Lilian J. Rice, Architect.

Swimming Pool and North Garden Layout for Mr. Ellis Bishop, submitted by S. B. Marston of Marston and Maybury, Architects.

Wooden Bridges for the Rancho Santa Fe Country Club, submitted by Harold E. Ketchum, Contractor.

Residence for Mr. and Mrs. Glenn W. Tomlinson, submitted by Handy L. Wass, Architect.

ALTERATIONS AND ADDITIONS:

Sign for John H. Simpson, Building Contractor, submitted by Glenn A. Moore.

2025-005-019