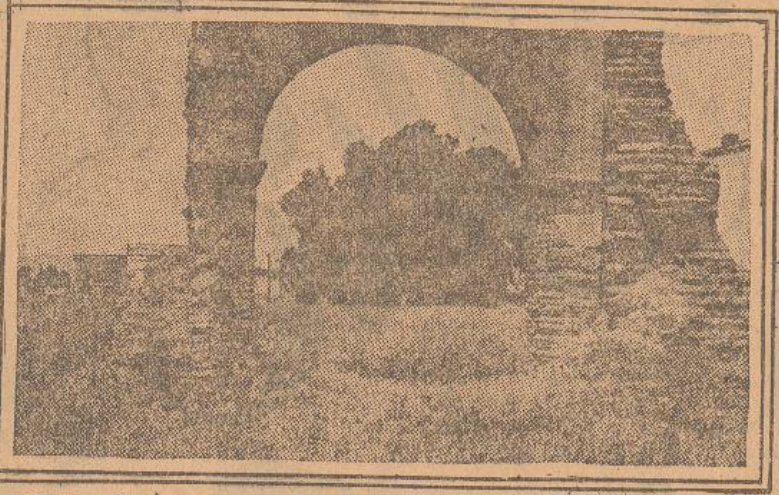
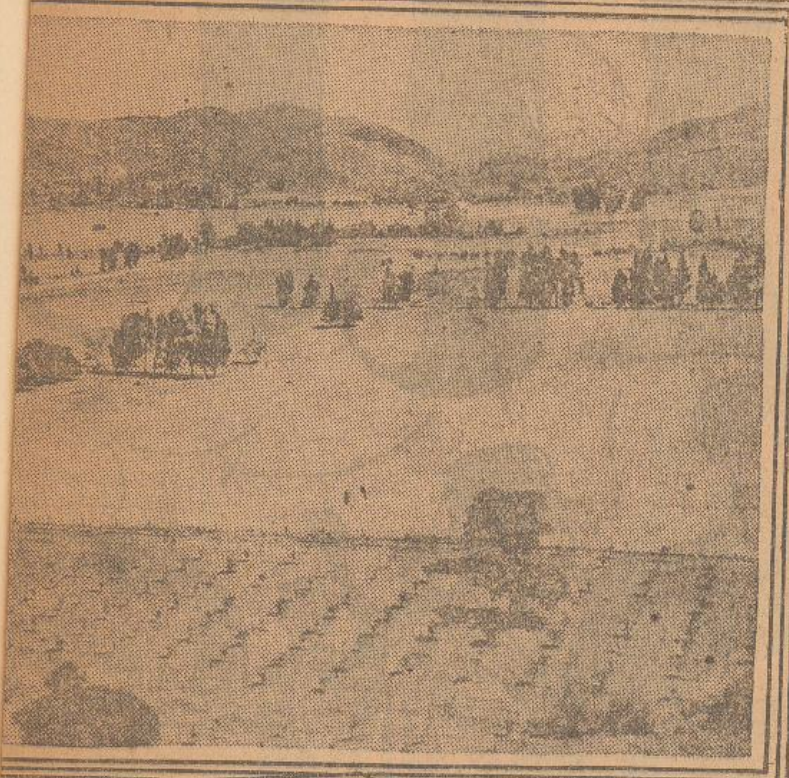
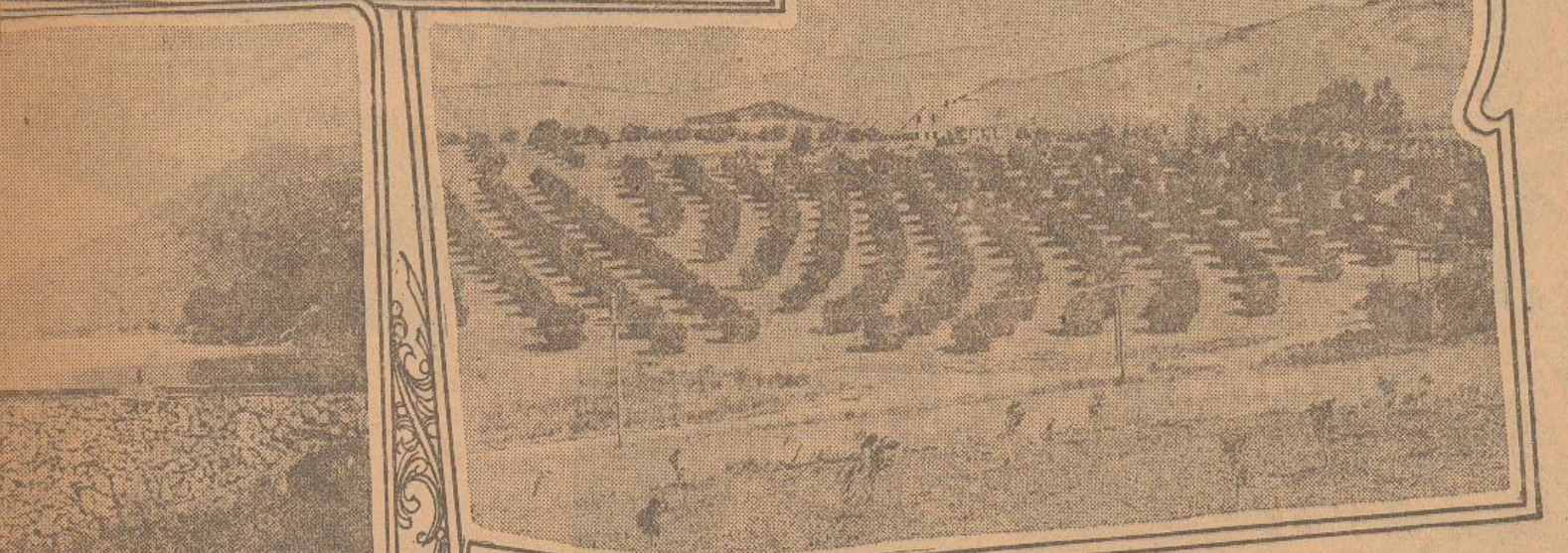


book

# Supplies Are Harnessed to Serve Need of Rich Soils



First American Pepper Tree



Typical Mature Grove



Lido Reservoir

one mine, on Carson hill, near Angeles Camp, pour three bricks worth \$20,000 each into the product of California's richest mine. They also will visit Panzer Hill, Fremont and the Treasure gold mines, after traveling over the... If the water is seeping through the gorge, it would tend to ease the danger of floods to points south of Slough City. Happily, however, the state engineers... At last, separate... north of... with... this... it is thought... improvements... before any decision will be reached... by a Federal labor organization was... reported at Monticome among dock workers. LONDON, March 24.—A strike... in one out of five farms... changed ownership.



# Send for this story

it is for you

who whether permanently located or not—have the foresight and desire to settle down in an ideal community such as has never before been made available—one which provides every assurance and opportunity for a happy life. It is for those upstanding responsible citizens such as are found among the progressive agriculturists and horticulturists of America.

## ~it tells about RANCHO SANTA FE

California's most unique land development project—carefully planned after years of study—soil analysis—perfection of vast irrigation system and classification of acreage suited to successful cultivation of various agricultural and horticultural products—is now ready for those who are in search of the most ideal of ideal communities. Rancho Santa Fe—with its acres and acres of choice arable land, lies between the sheltering mountains and the gentle Pacific (six miles distant)—one hundred miles south of Los Angeles, and twenty-five miles north of San Diego. Here, in this region, no man can buy for speculation. Only those are invited who wish to play a part in the upbuilding of what is destined to become one of America's most productive, prosperous, magnificently attractive and beautiful agricultural and horticultural (frostless) sections. Every opportunity will be afforded the purchaser in the way of expert advice and assistance in helping toward an assured income and the enjoyment of the peace and happiness which will come to those whose guiding star has pointed the way to such a wonderland as this. Join with us in the demonstration of the fond hopes of those who have spent years of thought and planning, that you might have what Rancho Santa Fe holds in store.

### Just a Few of the Interesting Facts About RANCHO SANTA FE

HOW TO GO TO RANCHO SANTA FE  
From Los Angeles and the East: By Santa Fe Ry. to San Diego or Del Mar, or take your car over California's most picturesque highway, south along the Coast of Southern California.

- 12-month growing season.
- Ideal climatic conditions.
- Annual mean temperature of about 62 per cent—minimum not below 32 per cent.
- Frostless.
- Most modern irrigation system.
- Water supply from Lake Hodges, storing 37,700 acre feet.
- Land values protected—building restrictions.
- Distinctive Spanish architecture Civic Center, Hotel La Morada, and other buildings.
- Winter vegetables have brought from \$500 to \$800 per acre.
- Acreage suited to successful culture of oranges, lemons, avocado (alligator pear), apricots, English walnuts, peaches, prunes, olives, etc.

Name ..... Address ..... City .....

ED. FLETCHER COMPANY (General Sales Agent)  
900 8th St., San Diego, Calif.—or  
Manager Rancho Santa Fe  
DEL MAR, CALIF.

ject  
cently  
ations

the title  
in that  
the cour  
the title  
and hold  
and hold  
interesting  
with  
but an they  
SANTA FE