



The Inn at Rancho Santa Fe

A Welcome to *The Inn at Rancho Santa Fe*

Conventions of up to a hundred members, Conferences, Executive gatherings and other types of group meetings find in The Inn at Rancho Santa Fe an exceptionally fortunate combination of convenient location and planned facilities, in an enjoyable year-round climate.

Transportation

Rancho Santa Fe occupies a charming Southern California valley six miles inland from the coastal towns of Solana Beach and Del Mar, 105 miles south of Los Angeles just east of Highway 101, and 27 miles north of San Diego. Guests arriving by rail are met, by appointment, at the Santa Fe Depot at Del Mar, and those arriving by commercial plane may make arrangements to be met at Lindbergh Field, the municipal airport of San Diego. Small company and private planes may land at the airport at Del Mar.

Accommodations

The main building of The Inn contains the offices, dining rooms, cocktail lounge and a few guest rooms. A number of attractive cottages provide accommodations varying from single rooms to suites, many with fireplaces, breakfast bars and private sun terraces. Sleeping accommodations at The Inn are available for close to a hundred guests, while others may be comfortably lodged at attractive near-by resorts.

Convention Facilities

We consider the convention seasons to run each year from April 15th to July 1st and from September 15th to December 20th. By the fall of 1954 we expect to offer a complete new convention building, "The Meetin' House," which will seat 225 for group meetings, movies or stage presentations, will permit banquets and dances

of up to 120, and will be designed for partitioning into smaller units for sub-group or committee meetings.

Recreation at the Inn

One of Southern California's finest 18 hole golf courses is maintained for year around play. A heated swimming pool is adjacent to The Inn, and facilities are provided for tennis, roque, shuffleboard, badminton, ping-pong, horseshoes and archery, as well as putting and bowling greens.

What to Expect from the Thermometer

Climatologists consider this area to have the most ideal year-round weather in the nation. There is a difference of only 17 degrees between the average temperature of the coldest and of the warmest month of the year. Our Januarys are warmer than those of many communities on the Gulf of Mexico, and our Julys are cooler than those of many cities on the Canadian border.

The Particular Charm of Rancho Santa Fe . . .

is the serenity of its setting. Situated in the center of a country community of beautiful homes, surrounded by orange and eucalyptus groves, the tranquil atmosphere of The Inn offers an opportunity for meditation and constructive thinking—a condition difficult to find among the interruptions and distractions of the city.



FROM	TO	MILES
Los Angeles	- - - -	105
San Diego	- - - -	27
Tijuana, Mexico	- - - -	46
Ensenada, Mexico	- - - -	115
Palm Springs	- - - -	134
Palomar Observatory	- - - -	47
Coronado	- - - -	28
La Jolla	- - - -	18

One Hundred and Twenty Years Ago . . .

when California was still a possession of Mexico, Juan Maria Osuna made application for a royal grant of the 8,824 acres which today include the San Dieguito Valley and Rancho Santa Fe.

Still retaining the original boundaries, the grant passed through many owners, and ultimately in 1906 came into the hands of the Santa Fe Railroad. This company planted much of the area to eucalyptus trees, in the belief that they would provide a continuing source of railroad ties. The experiment, however, proved impractical, and in due course the company sold a number of small tracts to individual owners for country homes and for the development of citrus groves. These owners in 1927 incorporated the Rancho Santa Fe Property Owners Association, which subsequently established procedures for the control of landscaping, building, business and industry to assure the preservation of a community of wide open spaces and beautiful homes.

Much of the early history of the Pacific Coast finds its origin in our neighborhood. Fifty years after Columbus discovered America, Juan Rodriguez Cabrillo sailed into San Diego Harbor and took possession of the entire area in the name of Spain. Father Junipero Serra founded the first of the California Missions in San Diego in 1769, six years before the battle of Bunker Hill.

A booklet, "What to Do, Where to Go, What to See in the Rancho Santa Fe Country" may be obtained at the front desk of The Inn. In it are listed many trips of historical interest, as well as others which feature scenic beauty or recreation. As shown on the adjacent map, many of these trips may be made in a drive of only a few hours.

To the South

- Del Mar—Race Track and County Exposition Grounds.
- La Jolla—Riviera of the Pacific, Scripps Aquarium, art center and recreational area.
- San Diego—Cabrillo National Monument, Balboa Park, Museums, Zoo and harbor activities.
- Coronado—Naval installations and Silver Strand.
- Tijuana and Ensenada, Mexico—Lure of a foreign land.

To the East

- Escondido—Center of citrus orchards and vineyards.
- Palomar Mountain—Site of the world's greatest telescope.
- Borrego Valley—Green oasis set in the vast Anza Desert.
- Palm Springs—Hollywood transplanted to the desert.
- Salton Sea—Inland sea, in the fertile Imperial Valley, with an elevation of minus 250 feet.

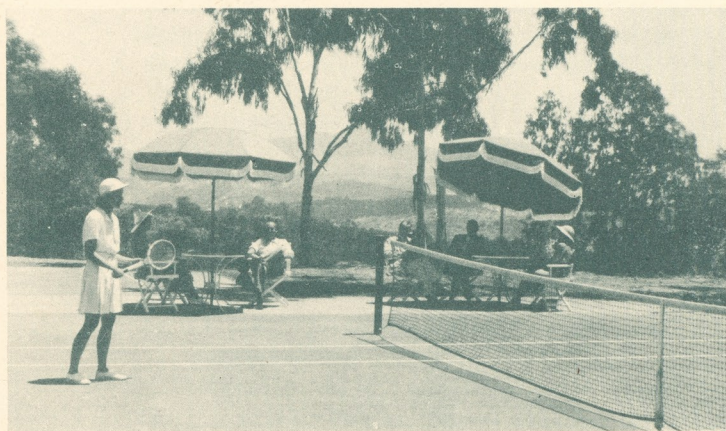
To the North

- San Juan Capistrano—Home of the Mission made famous by the yearly return of the swallows.
- Laguna Beach—Art colony and ceramic center.
- Long Beach, Los Angeles and Hollywood. A short three hours' drive from The Inn.

THE *Inn* AT
Rancho Santa Fe
 CALIFORNIA



Whatever your handicap, you will enjoy the 18 hole championship golf course at Rancho Santa Fe. It is skillfully laid out and kept in top condition the year around. Caddies and carts are available.



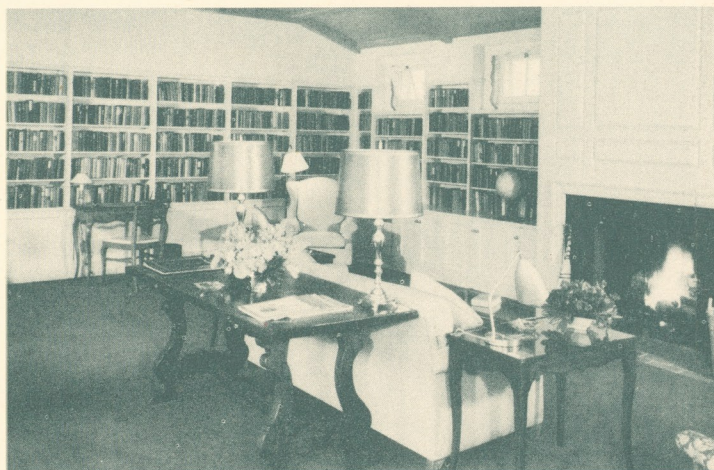
Tennis, badminton, roque and shuffleboard courts are among the recreational facilities offered guests of The Inn, as well as ping-pong tables, an archery range and bowling and putting greens.



The eucalyptus trees which tower above the guest cottages create an environment which invites tranquility and peace of mind. In the evening, when the long shadows fall, it is Nature at its loveliest.



The water in the swimming pool is filtered and kept at a comfortable year-round temperature.. In the summer, at near-by Del Mar, the Inn maintains a beach cottage for use of guests.



The library is housed in a separate building. Of the 4,000 volumes many deal with Western history and local lore. Current magazines, newspapers of many cities and reference books are available.



The detached cottages, grouped around the main building of The Inn, give guests a sense of privacy and of living in their own homes. Camellia Cottage, shown above, is the largest of the group.

