

*the* **RANCH**



September 1960

# RANCHO SANTA FE BULLETIN

PUBLISHED BY THE ASSOCIATION FOR THE BENEFIT OF ITS MEMBERS

Volume 7 Number 9



**WOMEN'S GOLF** — Mrs. James Stockton demonstrates her prowess at putting before other newly elected members of the board of directors of the Rancho Santa Fe Women's Golf club. Others on the board are, left to right, Miss Katie Knight, Mrs. R. C. Randolph, Miss Margaret

Muench, re-elected chairman of the board; Mrs. Thomas Copeman, Mrs. William Wearne, Mrs. Charles Hammond, Mrs. Jack Lee and Mrs. Jack Monroe. The women are making plans for their fall tournament to be held the first two weeks in October.

## Real Estate Transferred

The following real estate transfers have been reported since the last issue of the Bulletin went to press.

Purchasers whose names are in bold-face type are new Covenant members of Rancho Santa Fe Association.

Gilbert W. and Lea V. I. Fitzhugh to **Charles S.** and **Marian Hascall Jr.**, portion of lot 7, block 7.

Brunson Properties, Inc., to **Alfred F. Schmitt**, parcel 1 of Phillip Heights, R.S.F.

John Green to La Motte T. and Didi Cohe, portion of lot 2, block 29.

Homer C. and Evelyn Pheasant and Hyde and Marie Gillette to **Walter and Irene M. Buechting**, portion of lot 21, block 36.

At the Aug. 5 meeting of the Board of Directors of the Rancho Santa Fe Association, President B. F. Jenkins appointed William Norgren to serve as an alternate of the RSF Association Art Jury for the term of three years, effective July 1, 1960.

It was voted to increase the salary of Milo Lenton to \$600 monthly, effective April 1, 1960.

It was voted to approve the application of John A. Buchans Jr., for a set-back easement on parcel 15; also the request of Shearson, Hammill and Company for a sign permit to be placed at rear of building on portion of block C, map 1742.

President Jenkins appointed Cecil Gray chairman of the Bridle Trails Committee of the Association.

Secretary Smart presented gross revenue for the month of July, 1960:

Golf course, Greens fees cash, \$7,553; playing privileges, \$5,142; electric carts, \$1,766.50; lockers, \$152.75; total, \$14,614.25, a gain of \$92.75 over last year.

Golf shop: Carts, hand, \$112; carts, electric, \$482.50; cleaning and storage, \$395.50; merchandise, \$3,769.92; total, \$4,759.92, a loss of \$1,010 against 1959.

Restaurant and bar: \$7,271.01, a loss of \$1,721.90 against 1959.

A number of subdivision applications were approved by the Board at the Aug. 19 meeting, including that of John Howe for a portion of lot 1, block 43; John Truog for a portion of lot 2, block 7; Warren Wyman for a portion of lot 3, block 6.

For "Keeping of Animals," applications by Fred C. Sproul Jr., and V. E. Titcomb were approved.

The Board also voted to contribute \$300 to the Southern California Golf Association for the support of Proposition 6, regard-

## Symphony Group Sets Show For 'Lively Arts'

The San Diego Symphony Orchestra Association will benefit from the fashion show luncheon, "Salute to the Lively Arts," planned Sept. 14 and 15 by the Women's Committee of the Association.

The affair will be held in the Palm Room of the U. S. Grant Hotel, San Diego. Marston's will present an all-couturier show of fall and winter fashions.

Six cultural groups in the area will be honored, including the Old Globe Theatre, the Fine Arts Society of San Diego, the San Diego Opera Guild, San Diego Women's Committee of the Los Angeles Philharmonic and Theatre and Arts Foundation.

Mrs. John Rice Jr., of Rancho Santa Fe is serving on the hostess committee.

ing taxation of golf courses.

The application of Dr. Ernest Fox, et al, for filling low lands and planting on portion of lot 6, block 22 was denied; also the application of Association members in the vicinity of La Glorietta for a sign permit was denied.

## Rancho Santa Fe Sanitation Committee Reports North County Sewerage Survey

The following report was presented to the Board of Directors of the Rancho Santa Fe Association by R. M. Clotfelter, chairman of the Ranch Sanitation Committee at the Aug. 19 meeting of the Board.

The report was accepted and the Committee was authorized to take action to exclude RSF from Phase 1 of the North County Sewerage survey.

Gentlemen:

In reply to your letter of July 28, 1960, I wish to report that the Sanitation Committee of the Association attended the meeting at the Civic Center in San Diego which had been called by Mr. Jean L. Vincenz, Director of Public Works of San Diego County for the presentation of the "North Coastal San Diego County Sewerage Survey" to the Board of Supervisors on Aug. 8, 1960.

Previous to this meeting, Dr. Herbert Willy Meyer and the writer had attended a meeting of the San Dieguito Area Sewerage Planning Group held in Encinitas on July 27, 1960, in order to discuss this report.

The report contains 235 pages of data and recommendations. It divides the area from Fallbrook on the north to Soledad Canyon on the south and Escondido to the east into three major drainage areas. These three major areas are in turn broken down into many sub-areas.

Rancho Santa Fe according to

this plan is divided, two thirds of the area falling into the major region number two. This comprises the northern two thirds with Linea del Cielo as the dividing line. The southern one third falls in the major region number three. The northern two-thirds being a portion of sub-area seven, drains towards the San Elijo lagoon with its ocean outfall. The southern one-third falls into sub-area nine and drains to the San Dieguito valley and then on to the Sorrento plant with its ocean outfall.

The overall planning is divided into three phases. Phase one takes the plan up to 1970, phase two up to 1980 and phase three up to the year 2000.

### Survey Needs

The survey recommends that the north Rancho Santa Fe two thirds be included in phase one of the plan. This is the portion in the major region two, sub-area seven. This is a portion of the Escondido creek-San Elijo lagoon system. Trunk sewers, pumping stations and force mains are to be installed at an approximate cost of \$410,000. Also included would be Rancho Santa Fe's share of the treatment plant with ocean outfall to be built at the San Elijo lagoon whose construction is estimated to cost \$1,747,000. It is further estimated that the annual expense for maintaining these in-

stallations would be \$27,000 for the trunk lines, pumping stations, etc. and \$124,000 for the maintenance of the treatment plant with ocean outfall.

Added to this, of course, would be the installation of the collecting lines to join the trunk line, both cost and maintenance. The southern one third of Rancho Santa Fe would be charged for its portion of the San Dieguito Valley trunk line at an approximate cost of \$610,000 plus the Del Mar pumping station and the Sorrento Valley treatment plant with ocean outfall, costing about \$3,083,000. At such time that the new Rancho Santa Fe Sanitation District treatment plant would be abandoned there would be an additional 8200 feet of 15 inch sewer line that would be added to this system running from the Rancho Santa Fe treatment plant to the Del Mar Pumping station. This would probably fall into phase two of the plan.

The overall plan seems quite sound and can be handled under existing legislation. The three contemplated overall Sanitation Districts, encompassing the regions one, two and three could be organized under the present County Sanitation District Act. It was also pointed out that Improvement Districts within a Sanitation District could be organized and financed for specific purposes, benefiting and charged only to those properties (Continued on page 12)

## Exclusion Asked For Ranch in County Plans

With the approval of the Board of Directors of the Rancho Santa Fe Association, the Sanitation Committee attended a meeting Aug. 23 of the San Dieguito Sewerage Planning Group and presented the following letter.

Gentlemen,

After careful study of the "North Coastal San Diego County Sewerage Survey" the Board of Directors of the Rancho Santa Fe Association have requested our Committee on Sanitation to report to you that they request exclusion of Rancho Santa Fe from the plans to form larger Sanitation Districts or an Improvement District.

The reason for this is as follows:

The overall plan seems quite sound for areas of a potential high density of population, but the survey does not take into account the planned low density of population in Rancho Santa Fe.

As you know, Rancho Santa Fe is a planned country community originally developed by the Santa Fe Land Improvement Company a subsidiary of the Santa Fe Railroad. The first properties were sold with deed restrictions and in 1927 these were superseded by the Rancho Santa Fe Protective Covenant. For 33 years the Board of Directors of the Association has been enforcing these restrictions, (Continued on page 4)

### Information Bulletin

of the

### Rancho Santa Fe Association

Alice Sue Hardin, Editor

Rancho Santa Fe, California

Board of Directors — B. F. Jenkins, President; David B. Dewey, Vice-President; Sidney B. Jandorf, Francis J. Hoyne, Fred H. Lewis, William Schofield, William Weddell, W. A. Smart, Secretary-Manager.

# At your service

COMPLETE CONTEMPORARY INTERIORS:  
DRAPERIES, WALL-TO-WALL CARPETS,  
WALL PAPER, IMPORTED AND DOMESTIC  
FURNITURE — DESIGNED TO FIT  
**YOUR BUDGET AND YOUR NEEDS**

FREE CONSULTATION WITH OUR  
DECORATORS IN YOUR HOME

CALL PLaza 6-1982  
FOR APPOINTMENT . . .

**S H E P A R D ' S**  
SAN DIEGO AND RANCHO SANTA FE

# Exclusion Asked For Ranch Property

(Continued from page 3) which are the chief architectural and minimum cost of homes, as well as design of subdivisions of land. Until such time as there is a change in the 33 year policy of large area homesites of two or more acres per site, the present planned facilities of the new treatment plant appear ample for the community.

Rancho Santa Fe at this time is not in a critical condition. At the request of the Rancho Santa Fe Association, the Board of Supervisors, which are the Board of Directors of our Sanitation District had the Department of Public Works make a careful study of Rancho Santa Fe. At the conclusion of this study, a bond issue was voted and the bonds sold for the building of a new sewer treatment plant, planned in its initial stage for a capacity of 100,000 gallons per day. Based on an 80 gallon per person basis, this would provide a sewage capacity for 1250 people. This is three times the present population being served by these facilities, or 600 less than the entire population of Rancho Santa Fe today. According to the engineers of the Public Works Department this plant gallons per day and with proper maintenance has a life in excess of 40 years.

We are submitting herewith a map of Rancho Santa Fe which further illustrates how the present Sanitation District and its proposed immediate annexations take care of the central portion of Rancho Santa Fe; where the population density is above the average of the community

Even if Phase I, region 2, sub-area VII, trunk lines were made available to Rancho Santa Fe; the staggering cost of connecting two, three and four acre homesites to the system would be prohibitive.

If the Master Plan facilities should become necessary at some future date, Rancho Santa Fe would make application for annexation. This could be done in a manner similar to annexations now being made to the San

Diego County Water Authority.

In view of our cooperation with the San Dieguito Sewerage Planning Group, the Board of Directors of the Association request representation on the Committee that is being planned for continued study and action of the entire problem.

This letter is written not with a negative viewpoint, but to point

out the physical and economic considerations and to more fully inform your group of the current status and future plans of Rancho Santa Fe sewage disposal system.

Yours very truly,  
R. M. Clotfelter, chairman  
Rancho Santa Fe  
Sanitation Committee

# California Fair Opens

The 107th annual California State Fair at Sacramento opened Aug. 31 for a 12-day showing.

Reports are that it is one of the biggest in State Fair history with a wide range of entertainment, exhibits and programs of general interest.

**FIESTA**  
**LUNCHEONS**  
**FIESTA**  
**DINNERS**

For those "fiesta" occasions — when you are entertaining friends or treating the family — you'll enjoy luncheon or dinner in our Garden Room or Vintage Room.

And for private social affairs we have a choice of lovely accommodations with truly enchanting menu suggestions.

Leucadia  
**VILLAGE FORGE**

- Curtain-type fireplace screens made to order: Any size, any shape
- In 13 decorator finishes
- Name signs to order

1646 N. Hiway 101 PL 3-1641

THE *Inn*

Reservations • Plaza 6-1131  
**AT RANCHO SANTA FE CALIFORNIA**  
Wesley B. Hadden, Manager

# Impressive Annual Report Presented to Ranch Residents by Chief Fox of RSF Fire Department

The annual report by Chief James A. Fox, to the Fire Commissioners on the Rancho Santa Fe Fire Department gives a picture which impresses one with the important service rendered by this group. The Department, formed by an order of the San Diego County Supervisors in 1946, and organized under the Local Fire District law of the State, operates with a permanent staff of 3, the Chief, on continuous duty system, and two firemen on duty each alternate 24 hours. In addition there are the volunteers who are on call, and who drill each week. Also the personnel of the Rancho Santa Fe Association and of County Commissioner Grisct are available in case of emergency.

The Department's five emergency vehicles include a 750 and a 500 gpm. pumper; tank truck of 1500 gallons equipped with portable pump, 1000 gpm. Civil Defense pumper and a utility jeep with trailer. On drills, emergency calls and business the apparatus covered a distance of 2,978 miles, pumped for 109 hours and used 731.75 gallons of gas and 15 quarts of oil.

**Preventing Fire**  
The work of preventing fire or limiting its effect is as important as the more spectacular task of

extinguishing it. A great help in this has been the use of rotary card index system holding cards for each residence and building so that the location of an emergency call may be quickly pinpointed.

Each house in the district has been surveyed and the necessary information noted on the cards. This is of the greatest importance in this locale where street numbers are absent.

Fire drills were carried out regularly at the Elementary school. Fifty fire hazards were caught and eliminated in the community.

The total number of calls responded to by the department were 64, of which 16 were fires

in buildings and 31 outdoor fires. Special calls came in for first aid and resuscitator, for help in dealing with flooded premises suicide, rattlesnakes, auto accidents, tree removal which involved danger, and the miscellaneous rescue of birds and animals.

**Civil Defense**  
The Fire Department serves as headquarters for RSF Civil (Continued on page 12)

Step up to —  
**RANCHO SWIMMING POOL MAINTENANCE**  
The BEST in Pool Maintenance  
Complete Line of Chemicals & Supplies  
A personalized, LOCAL Service at competitive prices.  
Phone Michael Kirchoff  
PL 6-1427 (c/o Oia Johnson Garden Service)

Just give us the facts, ma'm — We'll do the flowers to compliment your party and your home.

**FRANAUD FLOWERS**  
by Audrey Wagner  
Nite Day  
PL 3-3515 PL 3-2554  
628 First St. - Encinitas

Get Your **SUMMER COGNES** for that Special Delight at **MERLE NORMAN COSMETICS**

Free Demonstrations by Appointment  
SK 5-1695  
Theatre Arcade  
Solana Beach

**MACADAMIA TREES**  
I am now taking orders for FALL and SPRING DELIVERY of variety of MACADAMIA NUT — recommended by University of California. These trees are field-grown and very much in demand. **BETTER ORDER NOW.**  
Cliff Tanner  
**Tanner Nursery**  
Via Diablo - Rancho Santa Fe  
Phone PL 6-1622

Rancho Santa Fe  
Country Homes and Homesites  
**R. M. CLOTFELTER**  
Licensed Real Estate Broker  
Since 1931 Plaza 6-1422  
Paseo Delicias

**Are You Sick of Being Sick?**  
It is not true today, "Everything possible is being done," UNLESS Chiropractic Care is employed.  
The correction of nerve pressures (pinched nerves) often leads to restored health after all other methods have failed.  
The **CHIROPRACTIC OFFICES** of  
Marsh Morrison, D.C., F.I.C.C.  
Vera L. Young, D.C.  
**SPECIFIC NERVE PRESSURE CORRECTION**  
5708 La Jolla Blvd.  
La Jolla, Calif.  
GL 9-1233

**STAG & DOE Sportswear**  
SOLANA BEACH  
118 SOUTH ACACIA AVENUE  
(Opposite Theatre and Market Basket)

**TIMELINESS!**  
WHETHER IT IS "BACK-TO-SCHOOL" NEEDS OR FOR NEW FASHIONABLE SPORTSWEAR You Will Find Just The Right Thing at **STAG & DOE**  
OPEN TILL SIX  
BANKAMERICARD and CHARGES

## Holiday Gift Mart Set Up by Women's Council Nov. 10

To most of us, busy with pulling things together after a summer of relaxation, Christmas seems a long way off. But not to the Women's Council of the Village Church, who are blue-printing plans for the group's annual Holiday Gift Mart.

Mrs. Chester Tolson, wife of the rector of the church, is chairman of the event, which is planned Thursday, Nov. 10, at the church. Hours will be from 11 a.m., to 5 p.m., with luncheon served.

### Chairmen Set

Mrs. Lyle Brinkerhoff is co-chairman for the Mart, with Mrs. Raymond Gordon and Mrs. Harry Wenz, advisors; Mrs. Edward Dacus and Mrs. Wenz, publicity; Mrs. Fred Ashley, door prizes; Mrs. Arthur Hill, tickets; Mrs. Dorothy Patton, pricing; Mrs. Harry Booth, arrangements; Mrs. Alfred Gregory, hostess; Mrs. Fred Manning, courtesies; Mrs. Victor Venberg, Mrs. Cliff Power and Mrs. Henry Sanger, luncheon; Mrs. Hans Amtmann, baked foods; Mrs. Arthur Thorne, jams and

jellies; Mrs. Thomas Osborn, candy; Mrs. Kay Brown, tea table; Mrs. Robert Francisco, fancy napkins; Mrs. La Motte Cohu and Mrs. Minton Cronk-hite, artificial fruits and flowers.

### Others Named

Also Mrs. Cecil Gray, art center; Mrs. Harry Cook, aprons; Mrs. James Randall, children's corner; Mrs. Reginald Clotfelter, pot pourri; Mr. and Mrs. Sidney Benedito, green thumb; Mrs. Raymond Gordon, wood-work; Mrs. John Goodwin, dried arrangements.

Christmas decorations will be under the direction of Mrs. Cuyler Anderson, wise men; Mrs. Herbert Hall, angels; Mrs. Ernest Farlinger, door bells; Mrs. Sydney Nelson, tree ornaments; Mrs. Wenz, Mrs. Howard S. Wilson, Miss Ann Cohu, Christmas sleigh; Mrs. Keith Powlison and Mrs. Frank Hoyne church stationery; Mrs. Elliott McIntire, Merry Christmas room; Mrs. John E. Howe and Mrs. C. Gray Stewart, Christmas door swags.

## Del Mar Fiesta Planned Sept. 3

Del Mar Civic Association announces its fifth annual Fiesta Del Mar to be held Saturday, Sept. 3, between 18th and 19th streets on Coast Blvd.

Joe Guerrero is general chair-

man of the event, which will feature dancing to three bands, including the Powerhouse Stokes, a Dixieland group, from 7 p.m., to 1 a.m. There will also be food and games.

incomparable  
**Pasadena's Smartest Restaurant**  
**Springboards into La Jolla**  
 Now the **ONLY one**  
**FULLY AIR-CONDITIONED.**



**The Honker**  
 "of course"

RESERVATIONS:  
 glencourt 9-3424

- Continental Cuisine
  - Select Spirits
  - Beautiful Banquet Facilities
  - Unique Wine Cellar for Parties with the "VELVET TOUCH"

7590 girard . . "LA JOLLA FASHION CENTER" . . LA JOLLA

HELLO THERE!

MY REAL OCCUPATION IS:

BUILDING  
 REMODELING  
 HOME REPAIRS

GIVE MY BOSS A CALL.



"A GOOD PLACE TO BUY"

**LUMBER & BUILDERS SUPPLY**  
 SOLANA BEACH — SK 5-1131

**Wishing Well Hotel**  
 Rancho Santa Fe

Unique charm & atmosphere.  
 Art Gallery open to public.

Jewel Tree Dining Room  
 "Don Quiote" Dining Room

Accommodations  
 Daily, Weekly or Monthly

• Daily: for Breakfast, Lunch & Dinner  
 PL 6-1123  
 for Reservations

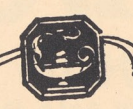
AAA, Diners Club, Hiltons Carte Blanche

Most Convenient  
 ... TO THE RANCH

**Del Mar**  
**Liquor Store**

1446 Hiway 101 SK 5-1733

Helen M. Eldridge  
 and Associates



5648 LA JOLLA BOULEVARD  
 LA JOLLA, CALIFORNIA  
 GLENCOURT 9-2651

- Lighting Fixtures
- Lamps
- Lightscaping

Because You Love Nice Things.

## Red Cross Meeting Set

The Rancho Santa Fe Branch of the San Diego County Chapter of the American National Red Cross will hold its first Fall meeting, Wednesday, Sept. 7, in the Garden Club.

Scheduled to start at 11 a.m., the meeting is open to all Ranchoites. Those planning to attend are asked to bring a sandwich lunch.

The local Red Cross has named Mrs. Alex De Bakcsy as "volunteer of the month of August" for her excellent work in the Backyard Swim program of the chapter. This is her fourth year as head of this project.

Board members for 1960-61 are Mmes. Hans H. Amtmann, H. B. Bakewell, John S. Berkson, Catherine Campbell, Harold W. Cross, Clarence R. Collins, Alex De Bakcsy, John F. Goodwin, Montgomery L. Hart, Francis Hart, Edward D. Havens, B. F. Jenkins, Pearl M. Jones, Farnum Macurda, Lothar C. Maurer, Thomas D. Nestor, J. H.



MRS. ALEX DEBAKCSY  
 Honored Volunteer

## Fire Dormitory

A three-man dormitory for firemen is nearing completion at the Rancho Santa Fe fire station, according to Chief James Fox.

Reilly, A. H. Stone, George Weinhagen Jr., and William S. Yates.

## Totem Pole Stolen From Memorial Park

Causing much consternation is the theft of the handsome totem pole from the George Richardson Memorial Park on the Ranch. It is thought that it is the work of experienced vandals rather than children, since the pole was well anchored in cement with a heavy pipe running through it.

Mrs. Anne Richardson is offering a reward for information concerning the person or persons concerned with this and as to the whereabouts of the pole.

## Fund Augmented

We hear that \$2400 is the tidy sum netted by the Country Friends for their charities from the successful "Day at the Race" held in August at Del Mar Turf Club.

Every normal man has two ambitions: First, to own his home; second, to own a car to get away from his home.

**Flair**

For Fashionable Elegance  
 or  
 Country Comfort

MEN'S & LADIES' GIFT ITEMS 1328 Hiway 101 — Del Mar SK 5-2622

**BLYTH & Co., INC.**  
 UNDERWRITERS AND DISTRIBUTORS  
 OF SECURITIES NATIONWIDE

FOR INVESTMENT INFORMATION CALL  
**ZENITH 7-0064**  
 (NO INTER-CITY CHARGE)

BANK OF AMERICA BUILDING  
 SAN DIEGO 1, CALIFORNIA  
 OFFICES IN 24 CITIES

**Benbough's**  
 LA JOLLA

**Fine Furniture and Interiors**

7643 Girard Ave. — La Jolla — GL 4-0341  
 "Serving Southern California for over 53 Years"

WANT TO GIVE A UNIQUE CHRISTMAS GIFT?



MAKE and GIVE A MOSIAC

COMPLETE SUPPLIES

MARY & BILL TAYLOR

**del Marco**

1331 HIGHWAY 101  
 DEL MAR, CALIFORNIA

## New Bush Planted by Garden Club

Recent dangerous fires turned the attention of Mrs. Hardy Kent, new president of the Rancho Santa Fe Garden Club to the fire-resistant plant, *Cistus Pureus*.

A native of the Holy Land, the plant was brought to the United States by Don Woolley, chief horticulturist of the State and County Arboretum at Arcadia, because of its non-flammable nature and the similarity of soil and climatic conditions of the Holy Land and arid Southern California.

Mr. Woolley, who gave seeds of this remarkable plant to the Garden Club, is planting the fire-scarred hills surrounding Arcadia with this growth, donating this in the interest of drastically reducing the fire hazard in the southland hills.

Mrs. Kent took the seeds presented to the Garden Club by Mr. Woolley and had them germinated by a nearby nurseryman, who now has a supply of the non-flammable and drought resistant plants on hand.

It is urged that the *Cistus Pureus* be planted around homes and hillsides on the Ranch as a fire prevention measure. Beauty of the land also is afforded by this plant that bears a purple bloom in the springtime. Its ultimate size is roughly three feet high and 4 feet wide.

## Plan District Meeting Oct. 3

On Oct. 3, the Rancho Santa Fe Garden Club will host members of the Palomar District of the Garden Clubs of Southern California at a meeting at 10 a.m., in the clubhouse.

Mrs. Wendell Wheelock will be hostess representing the local club at the meeting, to which about 100 people are expected to attend.

Members of garden clubs in the surrounding area will be present.



**NON-FLAMMABLE BUSH** — Fire Chief James Fox holds a lighted match to the *Cistus Pureus* plant, showing the Garden Club's new president, Mrs. Hardy Kent, its fire-resistant qualities. A native of the Holy Land, the plant is recommended for home and hillside planting as a fire prevention measure.

## Dried Flower Show

Mrs. Hardy Kent, president of the Garden Club, cordially invites Ranch residents and others interested to come to a display of dried flowers, which will be held in the new room at the Garden Club, Saturday, Oct. 1, 11 a.m., to 6 p.m.

## CASUAL CORNER DRESS SHOP

COUNTRY SQUIRE COURTYARD

RANCHO SANTA FE

COME IN TO SEE OUR IMPORTS FROM AUSTRIA WOOLEN SUITS and JACKETS

## PAUL T. GALLEHER

REALTOR

## Country Squire Courtyard

Rancho Santa Fe

JOYCE GARTON — LESTER K. RICE

Rear Admiral, U.S. Navy (Ret.)

ASSOCIATES

PL 6-1180

## Cocktail-Tea Set Sept. 27

September brings a stirring of Rancho Santa Fe Garden Club members following dormant summer months.

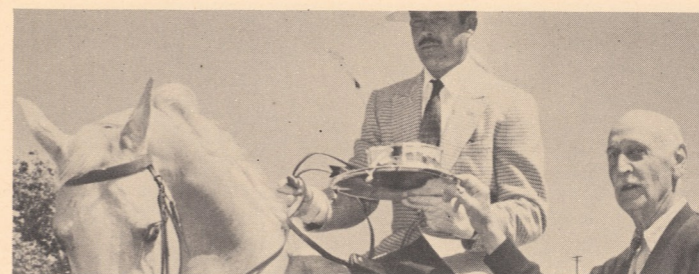
Departing from custom, the Garden Club will open the club year with a cocktail-tea to be held Sept. 27 in the clubhouse, 4:30 to 7 p.m.

Mrs. John Rice will hostess the affair, which, as is traditional with this gracious group, will serve to introduce to the membership those who have accepted invitations to have their names added to the club's roster.

New members include Messrs. and Meses, Elroy Jones, B. H. De Vos, Eugene Freeland, Douglas Heintz, Abner T. Sommers, John W. Graham, Wesley Hadden, H. W. Cook, Arthur Fannin, Gordon Seigel, William Norgren, Hans Karl Georg, Harry J. Lee, Jack Germond, Wm. Harold Oliver, Howard S. Whiffen, Claude R. Conklin.

Also, Gen. and Mrs. Roy B. Lord, Mrs. E. J. Jordon, Frank Cantwell, Col. and Mrs. Lothar Maurer, Dr. and Mrs. Robert Hughes and Rear Adm. L. K. Rice, USN ret., and Mrs. Rice.

An added feature of the party will be a display of dried flower arrangements, for which Mrs. John Cook is chairman.



**PALOMINO STALLION** — Grove Mosley, Ranch horse breeder, is shown astride his palomino, De Oro Moreno, having just received a trophy (several horse shows ago) from John Robertson, one of the founders of the Rancho Riding Club.

## TRAIL ROUNDUP

### Beautiful Palomino Star Of Rambla de Las Flores

By KAY WELLMAN

Many ranch residents have been thrilled by the sight of a big Palomino stallion and his lashing, black-haired, mustachioed rider in the Rancho Horse shows. This combination is De Oro Moreno and his owner, Grove Mosley, owner of Grove Knoll Farm on Rambla de las Flores.

As anyone will gather, talking to either Mr. or Mrs. Mosey, nothing is too good for Moreno. In 1955 he led the way to California from Chicago on the Super Chief, three weeks before his owners. Such first class traveling arrangements are only right for a star which has had top bill as a fine harness horse, five-gaited, parade horse, and high schooled horse. And in 1956 on Easter Sunday, Moreno took up quarters in the number one stall of the newly built Rancho Riding Club barn.

#### Breeding Program

With Moreno, who is double registered as an American Saddlebred and as a Palomino, the Mosleys began their program of breeding saddlebreds. Their farm includes 32 acres of pastures, groves, barns, paddocks and training ring. This fascinating business depends on heredity and background, and with their three fine studs, the Mosleys represent every famous breeding line in the saddlebred world.

However, this is not a business for the impatient man. There are about 29 horses at Grove Knoll Farm now, and of these, only those who were foaled in 1957 will be ready to show next year. It is then that the carefully worked out breeding programs show their results.

As Mrs. Mosley spoke of the things her husband was doing and planned to do she suddenly turned to Mr. Mosley and said "Today is the day the carrots come." Fifty pounds of carrots come to Grove Knoll Farm with each order. This is Mrs. Mosely's special contribution to the program, and her chance for personal contact with the horses.

After the years of caring for and working with these lovely animals is it any wonder that their owners feel a glow of pride when they see their "offspring" in the show ring?

HOMES ACREAGE HOMESITES

## Willis M. Allen Co.

of

RANCHO SANTA FE

PLaza 6-1544

FOR SALES AND SERVICE WITH GUARANTEED SATISFACTION...

100 NORTH HIGHWAY 101



IN ENCINITAS

YOUR NEAREST FORD DEALER

PLATEAU 3-1161

It costs NO MORE to have the FINEST

### LANDSCAPING

- New Lawns
- Specimen Plantings and Ground Covers •

### ROCKSCAPING

Rock Mound Gardens Textured Stone . . . Ground Covers in All Colors.

### PATIOS

Floors of Brick, Clay Tile, Flagstone, Concrete (Plain or Colored)

### Ornamental Retaining WALLS

In Stone, Brick, Flagstone or Block.

### SPRINKLER SYSTEMS

Designed and Installed.

### FENCING

ALL TYPES

EASY CREDIT TERMS

• One Contract  
**NO MONEY DOWN**  
• Take 3 to 5 Years to Pay!

FREE ESTIMATES

PLato 3-4555  
Macpherson  
Garden Center  
955 First St. (Hwy. 101)  
ENCINITAS

# Fall P.-T.A. Program Announced

A challenging and informative series of talks is planned for this school year by the Parent-Teacher Association of the Ranch Elementary school, according to Mrs. John D. Isaacs, program chairman. Mrs. Charles A. Chapin is president.

Setting a precedent, this year all the meetings will be held in the evening, the third Thursday of each month, with the hope of snaring a goodly number of men in the community, and we venture a guess they will be there to hear the interesting array of speakers.

Motto for the P.-T.A. year is "Safe Guarding the American Way Through Individualized Instruction," with emphasis on the direction in which the country's values lie.

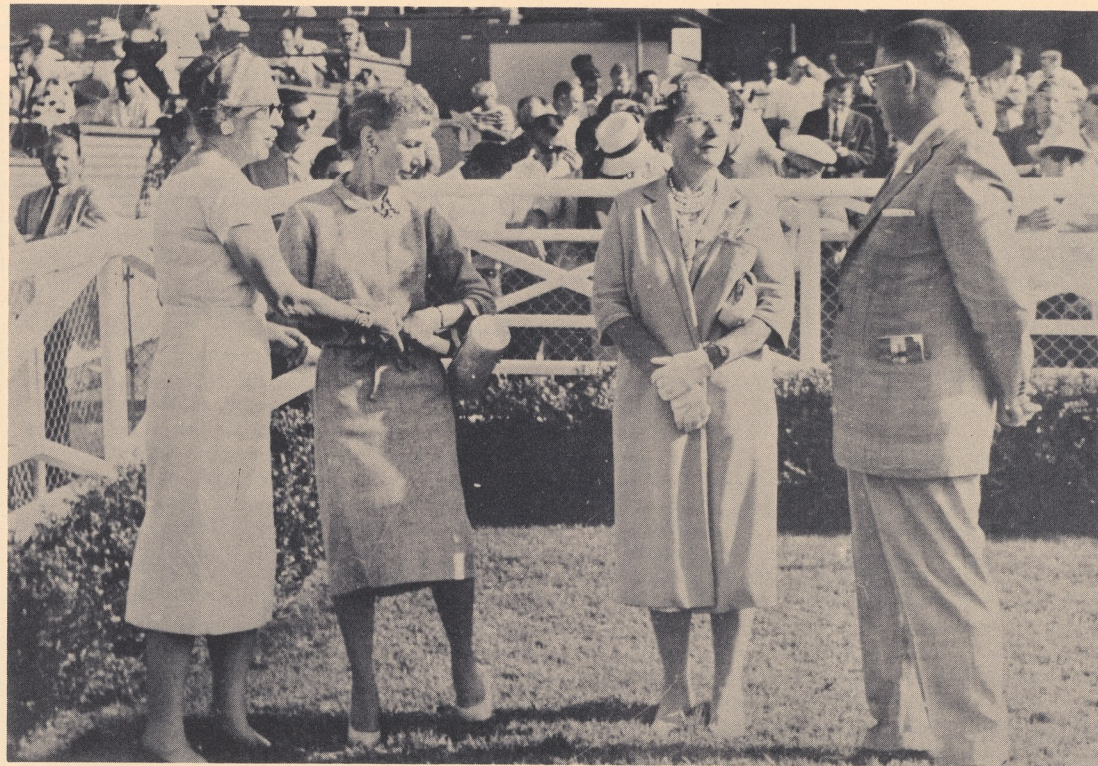
Dr. Gerhart Wolter, former professor of physics in Russian universities and West Germany, and now at San Diego State College, will open the series, Sept. 15.

### Baker Speaker

Lambert Baker, principal of the school, will speak in October on the results of the achievement tests and the enriched program at the school last year.

The October meeting will feature Tom Warburton, who will talk on "The Individualized Program at the High School Level." Mr. Warburton, who is assistant superintendent in charge of curriculum for the Grossmont High School district, was named Principal of the Year for all the United States last year.

The traditional carol singing program and the lighting of the Christmas tree at The Inn will take the place of the P.-T.A. meeting in December, and in January a panel discussion will be held on "What's New in the San Dieguito High School?" Panelists will be Dr. Wade Fite, chairman of the San Dieguito



**DAY AT RACES** — Miss Mary Bill, ticket chairman; Mrs. Charles Haugsten, general chairman; and Mrs. Edward Havens, president of the Country Friends, left to right, chat with owner and breeder, E. B. Johnston, at the Country Friends Day at the Races in August. The proceeds, totaling \$2,500, will be used for San Diego County Charities.

School Board; Don Crickmore, principal of San Dieguito Union High School; Don Jenning Newman, new principal of Earl Warren Junior High School; and Arthur Gumbrell, director of curriculum for San Dieguito High School District.

A Founders' Day reception is planned in February, when past presidents of the P.-T.A., and founding members of the Home School Club will be honored as the history of the school is traced. Dr. E. K. Povenmire, speech arts professor at San

Diego State College, will present "Green Pastures."

### Swim Program

Swimming will have the emphasis at the March meeting, when a film, "That They May Live," showing mouth-to-mouth resuscitation, will be presented. A discussion and decision as to whether or not the swim program, now allocated to the summer months, will be incorporated into the school program, will be held.

During the month of April, visitors will be welcome at the school in the classrooms, and

the P.-T.A. program will be presented by the children, demonstrating what occurs under an individualized program such as the local school stresses.

Dr. Richmond Barbour of San Diego will be the guest speaker in May, talking on "Individualized Instruction." Installation of new officers will be held.

A baby sitting service will be provided for the meetings; also a quiet room for study by older students and a room with movies and other entertainment, to make it easier for parents to attend.

## ENCINITAS CABINET SHOP

859 HIGHWAY 101  
PLateau 3-5346

## CRUSHED COLORED ROCK

over 15 colors to choose from.

**BUNYARD'S MASONRY SUPPLY**  
551 Vulcan, Encinitas  
PL 3-1164

## JOHN F. GILL

Jeweler

Fine Watch and Jewelry Repairing  
Pearl and Bead Stringing  
Diamonds - Jewelry Designing

Our 11th Year in La Jolla  
1200 Prospect St. GL 4-3285  
(West End of Ivanhoe, across Denslows)

**WE answer when YOU are out!**

GEORGE AND BESS RHOADES  
55 BRIGGS ENCINITAS

**North Coast ANSWERING SERVICE**  
24-HOUR SERVICE  
For Large or Small Business

PHONE  
PL 3-2545  
or  
PL 3-5571

## COAST UPHOLSTERY

842 Second St. - Encinitas  
Recovering — Restyling  
Repairing — Slip Covers  
Selection of Fabrics  
For FREE ESTIMATES  
in YOUR HOME  
CALL PL 3-5888



**LITTLE LEAGUE** —New officers of the Northern San Dieguito Little League include, left to right, Cecil Parsons, president; Don Crickmore, vice president; Marjorie Turpine, secretary; Paul Scandlyn, treasurer; Ernie Hylton, Major player agent; Bill Abbott, minor player agent; Bill Benes, equipment manager; Jim Mettee, publicity; Leo Mullins, umpire. Mrs. Vernie Miller, team mother chairman, is not pictured.

## Old Whaley House in Old Town, S.D., Open to Public After Restoration

The County of San Diego provided \$25,000 in 1956 to save from destruction the Whaley House, located in the 2400 block of San Diego Avenue in Old Town. Built 99 years before, it was the first fire-brick structure in Southern California. Now, having passed 4 more birthdays, the Whaley House, at 103 years, has just been opened to the public as a tourist attraction.

Operated by the San Diego Historical Shrine Foundation, with Mrs. June A. Strudwick director, the fine old two-story

building stands as a symbol of the Old West. The County ordered a restoration job that does justice to the stirring history which took place under the roof of the Whaley House, for this place served not only as the home of its builder, Thomas Whaley, but was in turn a courthouse, Sunday School, funeral parlor, dairy, theater and saloon.

Adding much to the recapturing of the atmosphere has been the donation of furniture from families throughout the county who had pieces authentic of the

era. When Whaley built the house it cost \$10,000 and was the grand mansion of the dusty seashore settlement.

The House is open from 10 a.m. to 5 p.m. Wednesdays through Sundays. Admission is 50 cents for adults and 25 cents for children and servicemen in uniform.

"To visit the Whaley House," says Mrs. Strudwick, "is to sweep back time like a curtain, leaving the visitor standing on the threshold of the 1850' — the age of coaches and crinolines."

## SFID Sets Tax Rate

After sitting as a board of equalization and hearing no protests of assessments, the directors of Santa Fe Irrigation district Aug. 19, set the tax rate at \$2.20 per \$100 of assessed valuation, a reduction from the \$2.40 rate of the last two years.

## HERITAGE HOUSE ANTIQUES

### News:

A shop containing ANTIQUES from far & near places of the world. — Why go abroad, or to New York or other big city centers - when for half the price you would pay we may satisfy your every desire.

**ARLENE S. WHALEN**  
3690 SIXTH AVE.  
CY 7-3137  
SAN DIEGO

## S. & F. JACKSON ANTIQUES

In This Kind of Business  
Over Forty-Five Years

3785 - 4th Ave. Front Parking CY 5-4895  
(Near Robinson)

INTERIOR DECORATIVE ACCESSORIES

## CAMELLIA HOUSE ANTIQUES

SPECIALIZING IN RARE FRENCH OBJECTS

EDNA C. PROULX  
163 La Costa Drive Leucadia PL 3-1826

### FEATURING:—

- Dresses
- Sportswear
- Lingerie
- Accessories



**NOW IS THE TIME**  
for  
TRANSITIONAL COTTONS  
and  
CO-ORDINATED SPORTSWEAR  
At The  
**REGINA SHOPS**  
ENCINITAS



- Unique Gift Imports
- Complimentary Gift Wrapping

SOLANA BEACH  
111 S. Acacia

594 First St.  
Open Fridays to 9 p.m.  
This Shop Only

DEL MAR  
1226 Highway 101

## RSF Sanitation Committee Reports Sewerage Survey

(Continued from page 3)  
lying within the Improvement District.

All of the above would seem to apply to areas that have a high potential population density. It seems quite impractical to your Committee at this time for Rancho Santa Fe. Our area is planned for a low density population. All of the forecasts which have gone into this report have apparently overlooked the planning that has been a part of Rancho Santa Fe and amplified by the Mangore studies for the future.

### Immediate Plans

From the various reports and discussions it is quite obvious that Solana Beach, Cardiff, Encinitas and Leucadia must expand their facilities in the immediate future. These communities would like to initiate some of the recommendations called for in phase one in the San Elijo lagoon area, where they hope to also construct a harbor district. They apparently would like to include the northern two thirds of Rancho Santa Fe, draining to this area, into the planned Sanitation District number two, or Improvement District, and thereby have the property owners in Rancho Santa Fe participate in the cost of their necessary sanitation constructions.

In view of this interest and probable effort to incorporate Rancho Santa Fe in the early stages of this development; it

is the earnest recommendation of the Rancho Santa Fe Sanitation Committee that the Board of Directors of the Rancho Santa Fe Association immediately go on record in writing with the Board of Supervisors of San Diego County and with the Director of Public Works of San Diego County and with the San Dieguito Sewerage Planning Group that Rancho Santa Fe wishes to be excluded at this time from any facilities to be built in the San Elijo basin. Any Sanitation District or Improvement District to be formed should include only those areas or communities which now urgently require new facilities in the San Elijo lagoon area.

At the same time it should be pointed out that Rancho Santa Fe would make application for annexation in the future should these facilities become necessary. This application for annexation would be made in a manner similar to annexations now made to the San Diego County Water Authority by paying current and back taxes.

### New Plant

It should also be strongly emphasized that the present Rancho Santa Fe Sanitation District has just voted and sold bonds for the building of a new sewer plant, planned in its initial stage for a capacity of 100,000 gallons per day based on an 80 gallon per person basis, providing for 1250 people, over three times the pre-

## RSF Annual Fire Report Given

(Continued from page 5)  
Defense organization and hosts North County Zone Directors monthly meetings. The Department served as a collection agency for Toys for Tots campaign and the Chilean Relief Fund.

Explorer Scouts meet at the Fire House under the direction of Dr. Bovee, Dr. Gier and Chief Fox. The Boy Scouts are

sent population being served by these facilities. According to the engineers of the Public Works Department, this plant is easily expandible to 400,000 gallons per day and with proper maintenance has a life in excess of 40 years.

In view of the extremely high costs, resulting in large increases in our taxes, envisioned by joining the Master sewer system, it would appear that Rancho Santa Fe could avoid these major costs if the Board will continue to guard the divisions of property into not less than two acre parcels where good drainage exists and larger parcels in poor drainage areas. Sanitation considerations should be equally if not more important than design of future subdivisions.

The San Dieguito Sewerage Planning Group have another meeting scheduled in Encinitas on August 24, 1960, and your committee would like instructions as to our policy.

trained and tested for firemanship and Public Safety merit badges by Department personnel.

Chief Fox taught Fire Science subjects at Palomar College, which were taken by, (among others) Firemen Crane and Durant in their off-duty hours.

### First Aid

Two classes in first aid were given by Chief Fox, one at San Dieguito High School and one at the Department. Instruction in artificial respiration was given to the Back Yard Swim Classes. Twenty-nine films of an educational nature were shown during the year.

Agreements for mutual aid continue in effect with Solana Beach and Encinitas Fire districts and the State Division of Forestry. During the year a mutual aid pact was signed with all Fire Districts in North San Diego County.

The RSF fire district covers a 13½ square-mile area, has 650 residences and an estimated population of 2,400. Secured and unsecured valuation for the year was \$8,547,820 and \$68,930 respectively, the tax rate being 63 cents.

All persons who bear the blessed title of "parent" have the personal responsibility to see that their children are growing up fully appreciative of the rights of God and their fellowmen. — J. Edgar Hoover

## Country Friends Style Show Plans Elaborate

Designer fashions, at just the season when milady's thoughts are concerned with tossing away her casual summer frocks for more sophisticated autumn attire, will be featured at the Country Friends fashion show, Sept. 22, 2:15 p.m., at The Inn.

The sixth annual show of this enterprising group, it has been named "Appearance of Autumn" and John Hogan of La Jolla will present the fashions.

Mrs. Kenneth Walker is chairman of the event with Mrs. La Motte Cohu, prize chairman. She announces that mouth-watering prizes will include lunch for two at Romanoff's in Beverly Hills; a certificate for \$100 at John Hogan's, gift of Mrs. Louis R. Wallace, of the Ranch; a painting donated by David Hillman, of Rancho Santa Fe; to silver dollars donated by Cecil W. Gray and the Willis M. Allen Company office in Rancho Santa Fe; and a week end for two at the Kona Inn on Shelter Island, San Diego.

### Patroness List

Patronesses include Mmes. Walter Wencke, Dorothy Patton, Hampton G. Wall, W. R. Fawcett, George Richardson, Carl Croft, Keith Powlison, H. Ray Millard, Paul Lloyd, Robert C. Gordon, John Heddon, Walter C. Young, Elliot Wheeler, Sidney Nelson, C. K. Whittaker, William Harold Oliver, John M. Wilson, Edward D. Havens, Herbert W. Hall, Harry E. Wenz, Roy Hill, Jack L. Powell, J. R. Ridgway Sr., Lothar C. Maurer, C. W. Lieb and Miss Erna P. Clark.

Mrs. Hans Amtmann is chairman of tea hostesses, who will be Mmes. Arthur Hill, Horace Blackman, R. E. Mannion, Fred Bruning, Edward Dacus, Lyle Brinkerhoff, John Truog, Paul Roberts, James Hopkins, James Irwin, Paul Galleher, C. C. Randolph, William Yates, C. Temple Murphy, William Weddell, Victor Venberg, James Ridgway, all of the Ranch, and Mrs. Charles duPont, of Del Mar.

Ushers Named  
Mrs. Thomas Faulconer chairmans the ushers who will be

Mmes. Shirley Keeth, Fred Ashley, John S. Berkson, Arnold A. Buck, Vernon M. Burns, David Burger, Albert C. Busche Jr., Charles Chapin, Robert J. Lutz, Albert H. Dutton, Charles V. Gibbs, William J. Herbert, David Hillman, Edward A. Merrill Jr., Jesse W. Powers, G. M. Ravenscroft, George M. Robertson, Chester L. Tolson, Frank S. Watts, Roger S. Woolley, Richard A. McClure, R. L. Smith, W. H. Mollering, Steven Yurenka, R. C. Wynne, Chester A. Root, Emmett Manion, all of Rancho Santa Fe.

Among those modeling will be Mrs. Robert A. Kolb, of Carlsbad; Mrs. William O. Fleetwood and Mrs. John Rice, Rancho Santa Fe; Mrs. Julian Kaufman and Mrs. Roy W. Pearce, of Encinitas; Mrs. Richard Stern, Coronado; Mrs. John A. Vietor, of La Jolla; Mrs. G. Richard Wheelock, Del Mar; Miss Georgia Sutton, Vista. Mrs. Harry W. Booth Jr., of Rancho Santa Fe, is chairman of models.

Mrs. Ray Grisct, ticket chairman, announces that seats which are reserved, will be \$5. Proceeds will go to the Boys and Girls Aid Society in San Diego and three family service agencies, Palomar, Oceanside and San Dieguito.

Trees that fit well into small gardens are the graceful, gray olive and moderate growing species of the eucalyptus family, among evergreens; Japanese maples, dogwood and flowering crabapple among deciduous varieties. The lovely birch is never out of bounds in small gardens.



COUNTRY FRIENDS — Mrs. Hans Amtmann, left, tea hostess chairman, and Mrs. Ray Grisct, ticket chairman, discuss plans for the "Appearance of Autumn" fashion show planned Sept. 22, 2:15 p.m., at The Inn by the Country Friends.

## Atlas Award Dinner Set

The Thirteenth Annual Atlas Award dinner is planned Saturday, Sept. 10 on the green of the Old Globe Theatre, Balboa Park.

The affair will feature an East Indian theme, honoring Ajaib Singh Takhar, recently appointed assistant ambassador to Iraq. Mr. Takhar, who has been studying for his Master's degree at San Diego State College, will be honored at a Shahi-Dubar royal assemblage.

The social hour will start at 6:30 p.m., with the awards to be presented at 8, followed by dinner at 9.

## MIDSHIPMEN BALL —

Midshipman Eddie Bremer, Miss Jan DeBakcsy, Miss Cindy Goodrich and Midshipman Mike Tiger, left to right, did a little practicing for the forthcoming Midshipmen Ball, when a planning committee met recently at the Alex DeBakcsy home on the Ranch.

When you need insurance you need  
**HOWARD KNEEDLER**  
Security Stability Integrity  
Since 1945  
526 Second Street  
ENCINITAS  
PL 3-1186 SKyline 5-2551

Yarns, Knitting, Accessories, Ribbons — Specializing in Ribbon Dresses  
**CREATIVE KNITS by GLADYS KNIT STYLE SHOW SOON!**  
Gladys Davis Helander  
5639 La Jolla Blvd. - GL 4-6605  
La Jolla, California

Residences  
Building Sites  
Investment Properties  
  
In Rancho Santa Fe  
And Adjoining Areas  
**NELSON and CHAPIN**  
Montgomery L. Hart, Associate  
PASEO DELICIAS

**ARTHUR P. GAY**  
MASTER WATCHMAKER  
WHERE SKILLED WORKMANSHIP AND FAIR DEALING IS OUR TRADEMARK  
WATCH INSPECTOR  
NEW LOCATIONS:  
115 Acacia Theatre Building SK 5-2590  
115 Acacia Theatre Building SK 5-2590

**CHURCHILL & CASSOU HARDWARE**  
• Dutch Boy Paints • Frigidaire Appliances  
140 E. Grand ESCONDIDO SH 5-2441  
Where Quality Tells and Service Sells

**Copper Miss Kennels**  
Training Boarding & Inside Sleeping Quarters  
**Blackie & Vi Yates**  
155 Saxony Rd. ENCINITAS  
PL 3-3142

Fascinating **DISH GARDENS** for a Living Gift that grows on you.  
at **Lessar Nursery**  
CACTI and SUCCULENT WONDERLAND  
PLateau 3-5192  
396 N. Highway 101 Encinitas, Calif.

IT'S SO EASY...  
**NO** • DIETING • DISROBING • EXERCISE • DISCOMFORT  
Just RELAXING Results FIRST Visit  
TRYING IS BELIEVING  
CALL FOR FREE APPOINTMENT  
**10 VISITS \$36.00 JUST**  
**SLIM & TRIM**  
1150 Hwy. 101 - Del Mar  
SK 5-9636 — Res. PL 3-1476

custom imports jerome d. gordon  
• exclusively designed gift greetings by Rost •  
• creative picture framing •  
oriental art • carved wood • gifts • special orders  
1832 S. Hill, Oceanside, California SARatoga 2-0648

### Publicity Workshop Slated Sept. 17

A publicity and public relations workshop is planned Saturday, Sept. 17 by the Women's Regional Planning Club, designed to give a helping hand to club and organization publicity chairmen.

The workshop will be held 9.30 a.m., to 3:30 p.m., at the University Club, 1333 Seventh Ave., San Diego. Mrs. Brazee Hawkins will preside.

Instructors, speaking on such topics as "Writing the News Item," and "Direction and Production Techniques for Radio and TV," will include Arthur C. Wimer, journalism department, San Diego State College; Donna Holden, public relations department, YMCA; Mrs. Victor Sauder, public relation chairman AAUW; and Albert A. Lewis, radio and TV department of California Western University.

Speakers will be Guy Ryan of the Tribune; Ken Zumwalt of the Union; Tom Read of the Sentinel and Mr. Lewis. Harold Keen of KFMB will be speaker for the midday luncheon.

Miss Vera Hawkins, 4433 Hermosa Way, San Diego 3, is accepting checks for reservations payable to the WRPC for the amount of \$8 for the workshop and luncheon. Reservations close Sept. 10.

### Gardner's Checklist

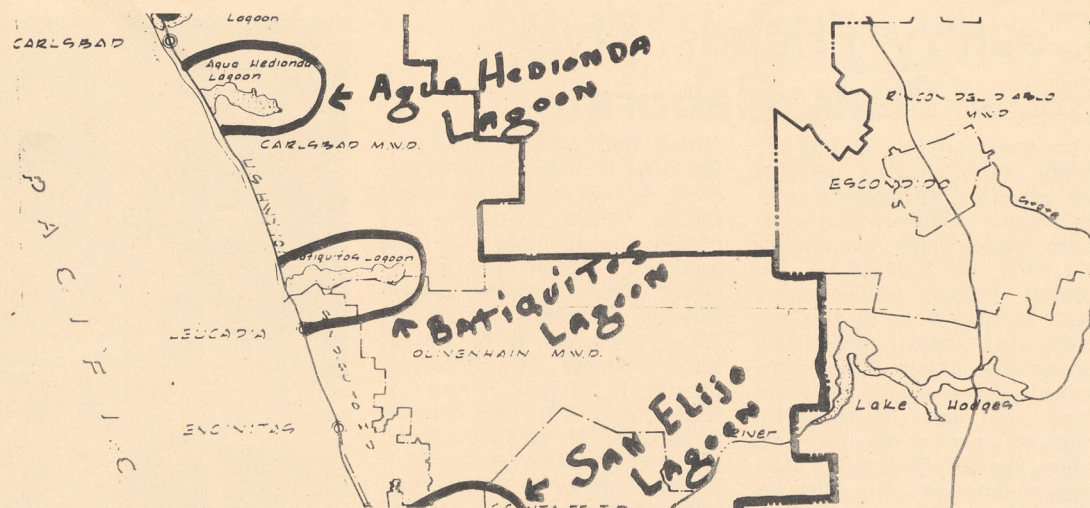
1. Water, water everywhere is the gardener's motto for September. Be sure to give plants a good soaking, not just a sprinkle.

2. Any lawn looks better if neatly trimmed around the edges. Edgers make the job easy.

3. Start working up a seedbed now if you plan to plant a new lawn this month. Dig in plenty of manure while you're at it, as well as a weed and weed seed control which your nurseryman can recommend.

4. Roses and shrubs need a liberal feeding this month if you haven't given it already. Work and water it in. (Before you use any fertilizer, read the directions.)

5. Don't fret about powdery mildew on tuberous begonias. It's easy to control with spraying. Be sure spray is recommended for begonia mildew.



CARLANA HARBOR DISTRICT is outlined on the above map with the three harbor sites, San Elijo Lagoon in Cardiff; Batiquitos Lagoon in Leucadia, and Agua Hedionda Lagoon in Carlsbad, circled. The Harbor Association of Northern San Diego County has opened offices at 2400 State St., Carlsbad, telephone PA 9-4606. San Elijo, which calls for the creation of an inland lake for small craft, home sites and eventual opening to the ocean, is to be developed first.

## YOUR FUTURE RECREATION BUSINESS WAY OF LIFE

WILL BE BENEFITED BY FORMATION OF THE

## CARLANA HARBOR DISTRICT

VOTE "YES" OCTOBER 11

FORMATION OF THE DISTRICT WILL MEAN —

- ★ CREATION OF NEW HARBORS
- ★ IMPROVED WATERWAYS
- ★ BEACHES ★ INCREASED TOURIST TRADE
- ★ NEW BUSINESS
- ★ MORE RECREATIONAL FACILITIES
- ★ AN EFFECTIVE AGENCY TO SECURE HELP ON HARBOR DEVELOPMENT FROM FEDERAL, STATE AND COUNTY GOVERNMENTS
- ★ NO BURDEN TO THE TAXPAYERS

For Informtaion Contact  
**The Harbor Association of Northern San Diego County**  
 2499 State St., Carlsbad PArkway 9-4606

### Watch Your Weather

RANCH TEMPERATURES

DATE	Min.	Max.	DATE	Min.	Max.
July 18	64	77	Aug. 1	69	80
19	67	82	2	64	82
20	68	87	3	65	80
21	70	87	4	67	76
22	72	87	5	66	75
23	72	87	6	62	75
24	72	84	7	65	76
25	72	85	8	68	73
26	74	83	9	68	75
27	74	84	10	68	78
28	76	87	11	69	81
29	74	84	12	69	79
30	73	84	13	70	78
31	73	84	14	68	78

### Oceanographer to Teach History

If you want to learn history with archaeological overtones from a master storyteller, sign up for the adult education class which James Robert Moriarty, oceanographer at Scripps Institute of Oceanography will host this fall.

Scheduled to start Sept. 14, the classes will be held each Wednesday, 7 to 9 p.m., in Pacific Beach Union High School. The title of the course is History of Archaeology.

Mr. Moriarty, whose interest at San Diego State College included anthropology, geology,

ancient and medieval history, was chosen as mentor this summer for a group of half-dozen or so teen-agers, all boys, chosen by the National Science Foundation from this area for work in archaeology.

Mr. Moriarty also will work this fall to an extent with Lambert Baker, principal of the Ranch Elementary school, on an archaeological project for students in the individualized program at the school. Details of this project are planned for a later issue of the Bulletin.

### Architect Sommers To Teach

Abner Sommers, nationally known architect, will teach a course in the history of shelter this fall at Rancho Santa Fe Elementary school.

Formerly an architect for the Chicago World Trade building,

Mr. Sommers will serve as a volunteer instructor at the school in the after-school special activities program, according to Lambert W. Baker, district superintendent.

**Dinner**  
 NOW BEING SERVED  
 6:30 p.m. to 10 p.m.  
 EVERY EVENING . . .

Enjoy your favorite cocktail in a cool, pleasant, relaxing atmosphere. Hot hors d'oeuvres served nightly.

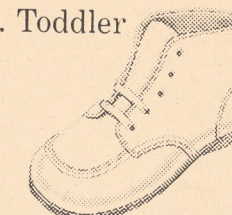


DEL MAR • SK 5-1501



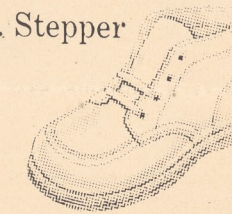
which boot

2. Toddler



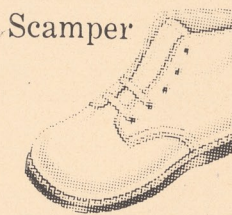
is best

3. Stepper



for your baby's

4. Scamper



walking stage?

Our fitters are trained to fit your baby's boot to the proper one of 4 basic Little Yankee baby foot designs (the Crawler, the Toddler, the Stepper and the Scamper) depending on the growth stage he's in. Can you afford to take chances with less careful fit?



**Marshall's Shoes and Repair**  
 112 W. Plaza - Solana Beach  
 SK 5-1776

FREE DELIVERY to Rancho Santa Fe every Monday and Thursday



**SIRENE'S**  
 for the finest LIQUORS & WINES  
 "The Friendly Store in Solana Beach north of the traffic lights"  
 SK 5-2112

HOME CALL \$4.95 SK 5-1653 135 S. HWY. 101 SOLANA BEACH, CALIF.

**FIDELITY RADIO TELEVISION SERVICE**  
 (BUCK COWLEY) OWNER-MANAGER  
 PERSONALIZED SERVICE  
 RCA SALES SERVICE  
 COLOR - BLACK & WHITE ALL TV, RADIO, HI-FI,  
 STEREO - RADIO ANTENNAS, CUSTOM  
 Large Record Selection ELECTRONICS  
 45 RPM - Stereo - HI-FI FOREIGN or DOMESTIC

**SUGAR PLUM TREE**  
 offers  
 New Books:  
 • ADULT BEST SELLERS  
 • CHILDREN'S CLASSICS  
 Candies:  
 • GIMBAL'S • SEELEY'S (Always Fresh)  
 ED & DOROTHY CHRISTOFFEL — PL 6-1682

ART JURY

# Interesting Calendar Gives Permits, Approvals

The Rancho Santa Fe Association Art Jury met Wednesday, Aug. 10, and issued the following permits:

Charles Page, residence, garage and pool on lot 75, map 2129; William Pfennig, residence, garage and pool on parcel 9, portion of lot 3, block 24, map 4458; H. W. Parmelee, roof on portion of patio on portion of lot 2, block 46; Charles B. Wagner pool on portion of lot 5, block 43; Abner L. Sommers, sign on entrance to Country Squire area.

The advice of the Jury is being submitted to the Board concerning the following:

Howard Glasgow, addition to residence and pool on portion of lot 2, block 21; Fred C. Sproul Jr., implement building on portion of lot 1, block 1; H. V. Harris, cabana on portion of lot 8, block 7; R. M. and Roberta Waite, 4-car carport, portion of lot 1, block 3; Helen Lehotsky, chimney on residence on portion of lot 33, map 2129; Shearson, Hammill & Co., sign on portion of block C, map 1742; R. Steinbaum, swimming pool on portion of lot 1, block 3; H. V. Harris, fence on portion of lot 8, block 7; The Inn, pump house for sewage pump on lot 3, block 32.

**Approvals**

Approval was given to the following applications:

Hugh E. Shaw to construct residence and garage on portion of lot 7, block 47.

Clark S. Teitsworth to construct a cabana and pool on portion of lots 4 and 5, block 7.

Hardy H. Kent to construct a carport on portion of lot 4, block 16.

Fred C. Sproul Jr., to remodel maid's room and construct terrace on lots 1 and 2, blocks 1 and 6.

P. W. Pichel to construct tack room and fence on portion of lot 2, block 6.

James Scarborough to make alterations and addition to residence on portion of lot 7, block 10.

Robert Henneg to construct a cabana on portion of lot 5, block 11.

Mmes. Bushard and Knight to construct a pool on lot 22, map 3058, Loma Verde Acres.

John Wild to construct a residence and carport on portion of lot 6, block 16.

Mme. Doris Richter to construct a residence and garage on portion of lot 4, block 30.

Mr. Goudy to replace roof on residence on portion of lot 1, block 43.

Consideration was given to the following applications:

Mme. Mary M. Lay to construct a fence on portion of lot 8, block 29.

Fred C. Sproul Jr., for "Keeping of animals," 12 cattle, 12 sheep and 12 horses on lots 1 and 2, blocks 1 and 6.

V. E. Titcomb for "keeping of animals," 1 donkey and 3 horses on portion of lot 7, block 10.

Dr. Ernest Fox for filling of lowlands and planting on portion of lot 6, block 22.

**No Sign**

Association members in the vicinity of La Glorieta on a private road for a sign permit on portion lot lot 5, block 33.

Approval was given to the preliminary application of Dr. R. W. Roland-Holst to construct an addition to residence on portion of lot 2, block 19; and consideration was given to the preliminary application of J. Clyde Eberly to construct a residence and garage on lot 99, map 2089.

Consideration was given to the following subdivision applications:

John E. Howe of portion of lot 1, block 43.

Robert Biggers of portion of lot 3, block 33.

John Truog of portion of lot 2, block 7.

Warren Wyman of portion of lot 3, block 6.

Note to wives: Keeping your husbands in hot water will not make them tender.

Mrs. Lillian Whittaker  
Rancho Santa Fe  
Calif.

**BULK RATE**  
U. S. POSTAGE  
**PAID**  
Rancho Santa Fe,  
California  
Permit No. 15

## THE TRADIN' POST

**ESCONDIDO'S OWN, FINE  
LOCALLY PRODUCED WINE**  
Sweet and Table  
Available Exclusively at  
**FERRARA'S WINERY**  
1120 West 15th

**Rancho Hardware**  
in the Village Center  
Tools for your  
Gardening  
Also Barbecue Supplies  
PL 6-1702

**Gailey's Photo Supply**  
"Escondido's Most  
Complete"  
230 E. Grand  
Phone SH 5-7823 - Escondido

**MacPherson's**  
Men's and Women's  
Quality Clothing  
515 First Street  
Encinitas  
PL 3-1953

For any make **NEW** or good  
used car, call **BILL APPLE.**  
**A & A MOTORS**  
QUALITY CARS  
PL 3-1702  
204 N. Hwy. 101 Encinitas

The Finest in Beauty Care  
for the Discriminating Woman  
SKyline 5-1549  
**ARMOND'S  
BEAUTY SALON**  
ARMOND B. CARPENTER JR.  
110 W. Plaza  
Solana Beach, Calif.  
Specialists in Hair Shaping.

**Ashley's**  
Rancho Santa Fe Market  
Watch for our Weekly  
Handbills

**CULLIGAN Soft Water  
SERVICE**  
for **BETTER LIVING**  
111 So. Cedros P.O. Box 278  
SOLANA BEACH  
Phone SK 5-1022

**Swimming Pool Supplies**  
CHEMICALS — AQUA FINE PURIFIERS  
LADDERS — DIVING BOARDS  
HEATERS — FILTERS  
**COMPLETE IRRIGATION NEEDS**  
PIPE — SPRINKLERS — VALVES  
PEERLESS & JACUZZI PUMPS  
**WEBB PUMP & SUPPLY**  
ESCONDIDO SH 5-0511

**Farantino's**  
SPECIALIZING IN  
CHIOPPINO AND  
CHICKEN CACCIATORE  
Open: Noon - Closed Tuesdays  
**FINE SEAFOOD**  
and  
**ITALIAN CUISINE**  
1020 Prospect - La Jolla  
GL 4-5443

1997.002.062