



NOTICE
ASSOCIATION SPECIAL MEETING
DATE CHANGED FROM
APRIL 15 to MAY 6

April 1960

RANCHO SANTA FE BULLETIN

PUBLISHED BY THE ASSOCIATION FOR THE BENEFIT OF ITS MEMBERS

Volume 7 Number 3

ART JURY

Agenda Crowded

A full calendar faced the Art Jury of the Rancho Santa Fe Association at its meeting March 9 in the Board room. Applications on the agenda which were considered included:

The Jury denied the preliminary application of John Siebold to construct a residence on portion of lot 4, block 29.

Approval was given to the preliminary application of Baldwin Land Company to construct a duplex on portion of lot 1, block 31.

William Savage to construct residence and garage on portion of lot 4, block 47.

Rancho Riding Club to construct addition to stables.

Fred Ashley, to construct carport on portion of lot 4, block 30. Consideration was given to the following applications:

Fred Ashley for variance in connection with above construction.

Earl W. Boteler for "Keeping of Animals," on portion of lot 3, block 12.

Richard Blackledge to erect sign on lot 1, block E, map 1742.

Consideration was given to the following subdivision applications:

George Brent for portions of lots 5 and 6, block 36.

John MacFall for portion of lot 5, block 43.

Dorothy Willoughby for portion of lot 1, block 39.

Dr. John Novak for portion lot 3 and lot 4, block 45.

C. O. Roper for portion of lot 5, block 47.

John Johnson to construct a residence and garage on portion of lot 7, block 34; F. J. Liederbach to construct a residence, garage and pool on portion of lot 8, block 29; Ira Brown to construct a residence and garage on parcel 3 of portion of lot 3, block 47; John Kaufman to construct a residence and garage on portion of lots 5 and 6, block 29; Carl Croft to construct an addi-

SPECIAL MEETING

An issue that has long been a conversation piece among certain folk on the Ranch will now be the subject of a special meeting.

At the March 18 meeting of the Board of Directors of the Rancho Santa Fe Association, it was voted to hold a special meeting of Association members April 15, at 7:30 p.m., in the Garden Club for the purpose of discussing whether or not meetings of the Board of Directors of the Association will be open at all times rather than the present method of attendance by appointment.

The motion resulted from a written request of 34 members of the Association requesting

that members be allowed to attend Board meetings. Signing the petition were:

Richard C. and Mary F. Blackledge, M. F. and E. S. Tackett, H. and Joan Newman, Edward W. Dobroth, H. H. and Beatrice Hall, R. M. Crichton, A. Mahon, Eugene Fletcher, H. M. O'Rand, Albert L. and Harriette G. Hembree, Mr. and Mrs. Charles W. Haugsten, Gordon and Olive Siegel, Cecelia Tucker, George J. Lewis, C. F. Page, William Pfennig, Herbert C. Schulze, Edmond Kowalski, Irwin and Elizabeth J. Busse, S. C. Cocks, Kenneth E. Cocks, D. J. and Doris M. Campbell, John and Elizabeth B. Goodrich, H. W. Cook.

BOARD MEETING

Subdivision applications approved by the Board included:

Frank Bonham, portion of lot 1, block 10; Maj. Charles R. Nelson, portion of lot 5, block 30; John Kaufman, portion of lot 6, block 29.

The lot realignment application of J. Van Benschoten, portion of lot 3, block 22, was approved; also the Bridle Trails easement by Walter Wencke and Harry Bagby.

Upon the recommendation of the Parks and Recreation Board, Rev. Chester Tolson was made chairman of the Youth Activity Committee.

At the March 4 meeting, the Board discussed the private golf club issue and the clearing of matters in committees before coming before the Directors, both items discussed elsewhere in the Bulletin.

The subdivision application of Dr. John Novak of portion of lot 3, all of lot 4, block 45, was approved.

Secretary William Smart presented the following gross revenue report of the month of February, 1960:

Golf course: Greens Fees, \$6,311.75; playing privileges, \$4,804; electric carts, \$1,287.30; lockers, \$10; total, \$12,413.05; a gain of \$1,941.25 over last year.

Golf shop: Hand carts, \$229.50; electric carts, \$341.50; cleaning and storage, \$417; merchandise, Tucker, George J. Lewis, C. F. Page, William Pfennig, Herbert O. Schulze, Edmond Kowalski, Elizabeth and Irwin Busse, S. C. \$3,852.22; total \$4,840.22; a gain of \$1,277.77 over last year.

Restaurant and bar: \$8,281.87, a gain of \$1,346.88 over last year.

Ranchoites Aid Tri-Hospital Building Fund

Rancho Santa Fe provided its quota of community-minded workers for the Tri-Hospital Building Fund Campaign, which closed the end of March.

Chairman of the committee was Dr. Herbert Willy Meyer, M.D., with La Motte Cohu, co-chairman, and Rev. Chester L. Tolson, vice chairman.

Volunteer members who canvassed the Ranch included Mmes. Fred Ashley, Lambert Baker, John Berkson, John Bovee, Arnold Buck, Reginald Clotfelter, La Motte Cohu, Philip Culbertson, George Dawkins, Alex De Bakcsy, Ben Gardner, John Goodrich, Raymond Gordon, Richard Harris, James Irwin, Sidney Jandorf, B. F. Jenkins, A. B. Lasswell, John F. Lee, John E. Lee, Paul Lloyd, Edward Merrill, H. Ray Millard, C. Temple Murphy, W. Harold Oliver, Lewis Pratt, Dorothy Patton, Frank Peters, William Pfennig, Clifford Power, G. I. Siegel, Houston Stiff, Martha Twining, Hugh Verano, H. S. Walseth, David M. Ward, William S. Yates, and Miss Margaret Muench.

Also Messrs. Ray Badger, Harry Booth Jr., John Couch, Charles Chapin, Gilbert Currie, Cecil G. Gray, Alfred Hill, John F. Lee, Ralph Mangan, Carl Muench, Eddie Read, W. B. Shipway, William Weddell and Col. Arthur Hill.

Village Church Plans Oratorio on Palm Sunday

An oratorio, "Crucifixion," by Stainer is planned as a special service on Palm Sunday, April 10, at the Village Church.

Soloists will be Ewing Mitchell, baritone, and Rev. Chester L. Tolson, rector of the church, tenor.

Rt. Rev. Walter Mitchell, retired bishop, and father of the singer, will officiate at the service.

Only tentative plans for Easter services were under way at the time the Bulletin went to press; a sunrise service and two morning worship services.

A big supply of annual bedding plants is available. You can get both spring and early summer bloom from most of them planted now.

Private Golf, Country Club on Ranch Under Discussion

A group of Rancho Santa Fe Association members who have been developing plans for a private country club at Rancho Santa Fe, have contacted the Board of Directors of the Association through the two recent letters. The initial letter, dated January 13, asks for a meeting with the Board to discuss their proposal. The second letter of February 5, sets forth essentials of the proposal which subsequently were discussed in detail with the Board.

Upon recommendation of the Association attorney an alternative proposal concerning initiation fees, more acceptable from the tax angle, will be submitted shortly by the Committee for Forming a Club.

Spokesmen for the Board and members Committee state that both are working harmoniously for club plans which will be completely equitable and give consideration to interests of all Association members.

The January 13 letter, addressed to the Board follows: Gentlemen:

For the past three months, the undersigned group of Association members have worked toward the development of plans for a golf and tennis club here at Rancho Santa Fe.

At the present time, the golf course is being used by an ever increasing number of golfers. This has resulted in crowded conditions on the course, slower play and excessive damage to the greens and fairways. The

pleasant playing conditions formerly enjoyed by residents of the Association have disappeared.

The presence and convenience of the course here on the Ranch has in the past greatly contributed to enjoyable living and in turn has helped to maintain high property values. Many residents of the Ranch who have observed the trend toward increased unlimited public play on our golf course, feel that its continuance will inevitably result in a rapid deterioration of all property values.

The correction of the above conditions has prompted us to develop a proposal for the formation of a club whose operation would be a source of pride and one which would equitably protect the interests of all residents of the Ranch.

We believe that such a club could be formed and managed under the covenant of the Rancho Santa Fe Association. Further, it is felt that the land, buildings and equipment could and should remain the property of the members of said Association.

We propose, under an equitable agreement by and with said Association, to take over the operation and maintenance of the golf course, restaurant, bar, tennis courts and other facilities, if any.

The development of this proposal has entailed a comprehensive study of:

1. The correspondence and

facts contained in an earlier proposal to the Board on this same subject.

2. A cost analysis of the Rancho Santa Fe golf course as set forth in current and past operating statements.

3. The rules and bylaws of other successful private clubs in southern California together with their operating cost statements.

In this connection, a rather detailed analysis was made of the operation of the Palos Verdes golf course. The form of government and community of Palos Verdes is quite analogous to Rancho Santa Fe and the meth-

od of operation for the golf course there has proven eminently successful.

It is the opinion of our group that our work has proceeded far enough to present specific recommendations to you at this time. We ask that you invite our committee to appear before you at your meeting of January 29, 1960.

Respectfully submitted,
John W. Bancroft, La Motte Cohu, Carl W. Croft, C. V. Gibbs, David Hire, John E. Lee, H. Ray Millard, Ward Miller, C. C. Randolph, Jr., Howard G. Steinwin-
(Continued on page 10)

Rancho Santa Fe Association Committee Members Announced

In order to acquaint Association members with Committees assisting with matters pertaining to the Ranch, and to encourage them to contact committee members in regard to problems or questions in a particular field, the Bulletin is printing a list of the Committees of the Board of Directors of Rancho Santa Fe Association.

They are as follows:

Parks & Recreation Board
Harry W. Booth, Jr.
Stanford Tompkins
Dr. Neil Randol
Tennis Committee
Raymond Gordon
Hubert Brooke
Roger Woolley
Bridle Trails
William Herbert

Landscaping Committee
Jane Thorne
Youth Activities Committee
Rev. Chester Tolson
Planning Committee
Capt. B. F. Jenkins
Carl Muench
Highway Committee
Raymond Gordon
Health & Sanitation
R. M. Clotfelter, Chairman
David B. Dewey, Jr.
William Schofield
Capt. B. F. Jenkins
Zoning
Claude Welles
Golf Course
Roy J. Kirby
Mrs. Pratt
Edwin Frazer
Wendell Wheelock
James Stockton

Information Bulletin

of the

Rancho Santa Fe Association

Alice Sue Hardin, Editor

Rancho Santa Fe, California

Board of Directors — William Weddell, president; David D. Dewey Jr., vice-president; Dr. Neil J. Randol, Edwin H. Frazer, Capt. B. F. Jenkins, Sidney R. Jandorf, Francis J. Hoyne, W. A. Smart, secretary-manager.

At your service

COMPLETE CONTEMPORARY INTERIORS DESIGNED TO FIT YOUR BUDGET AND YOUR NEEDS

FREE CONSULTATION WITH OUR DECORATORS IN YOUR HOME

CALL PLaza 6-1982 FOR APPOINTMENT . . .

SHEPARD'S
SAN DIEGO AND RANCHO SANTA FE



Beauty Boundary Binder

In checking the homes to be open for the Garden Club's House and Garden tour, April 23-24, a "side bar" story which will glow the hearts of the Beautification Committee turned up.

It was while taking the steps from the formal garden to the succulent beds at the home of Mr. and Mrs. John W. Wilson that the beauty of the near-far landscape was remarked. In answer Mrs. Wilson said, "It is our good neighbors who are responsible for this glorious view- they took out three of their lemon trees so we could gain it."

Warm comment followed on such open-handed neighborliness, to which Mrs. Wilson added: "That is not all. See that towering black power pole to the left? That is, try to see it — for our neighbors had a tall slim, palm

which they said we might move between us and the power pole. We took them up on it, and now you see the pole hardly at all from our garden."

The name of the neighbors-in-beautification? Mr. and Mrs. Albert Hunt.

We're all "Eastered" up for you — Order early —

Plants — Corsages Arrangements



FRANAUD FLOWERS

by Audrey Wagner

628 First St. PL 3-2554
ENCINITAS

Art Jury

(Continued from page two)

tion of lots 1 and 3, block 37; Kenneth, LeRoy & Donald Fraser for subdivision of portion of lots 4, 5 and 6, block 34; J. Van Benschoten for lot realignment of portion of lot 3, block 22; John Kaufman for subdivision of portion of lot 6, block 29.

Approval was given to color samples for exterior of residence of Howard W. Stiner, and residence trim of Harry Kleist and G. McWilliams Jr.

Permits were issued to: H. H. Boschen, residence and garage, guest house and pool portion of lot 3, block 6; Col. Eugene Fletcher, wall and gate entrance, portion of lot 97, map 2089; G. A. McWilliams Jr., color exterior of residence, lot 126, map 2129; Harry W. Booth Jr., color for exterior of residence portion of lots 67 and 71, map 2129; Standard Oil Company of California, sign on portion of block C map 1742; Mme. Anne Richardson, entrance and lamp posts, portion of lot 113, map 2089; H. B. Steward, color, exterior of residence portion of lot 3 block 11.

Deitrich Drugs
PL 3-1943
(PRESCRIPTIONS)
COR. 1ST & D. STS. • ENCINITAS, CALIF.

Close enough for ALL YOUR NEEDS

custom imports jerome d. gordon

• creative picture framing •

oriental art • carved wood • gifts • special orders

1832 S. Hill, Oceanside, California SARatoga 2-0648

HOMES ACREAGE HOMESITES

Willis M. Allen Co.

of

RANCHO SANTA FE

PLaza 6-1544

VINTAGE ROOM

Luncheon and dinner specialties — thick steaks, chops, prime ribs, and luscious salads served to 9:30 P.M. — in an early California wine cellar.

SUNDAY EVENING BUFFET

Sumptuous buffet dinner served from 6:30 to 8:30 P.M. every Sunday night in the Garden Room. Only \$3.50.



Reservations Suggested

THE Inn AT
Rancho Santa Fe

Wesley B. Hadden
Vice President

Garden Tour Ranch Estates In Readiness

Owners of the six homes and gardens included on the annual Home and Garden Tour sponsored by the Rancho Santa Fe Garden Club are giving very aware looks at their places of abode, preparatory to bringing them to very best level of beauty for the forthcoming tour, April 23-24.

It is a rare privilege, not only for Ranch folk but for interested persons from all over the county to have the opportunity to visit these homes since they exemplify so well the spirit of Rancho Santa Fe in its desire to develop and maintain the area in as beautiful a manner as possible.

So it is fitting that proceeds (\$3.50 each or in a block of 10 at \$3 each) go to the Garden Club's Rancho Beautification Committee. Work of this committee is evidenced in many ways on the Ranch.

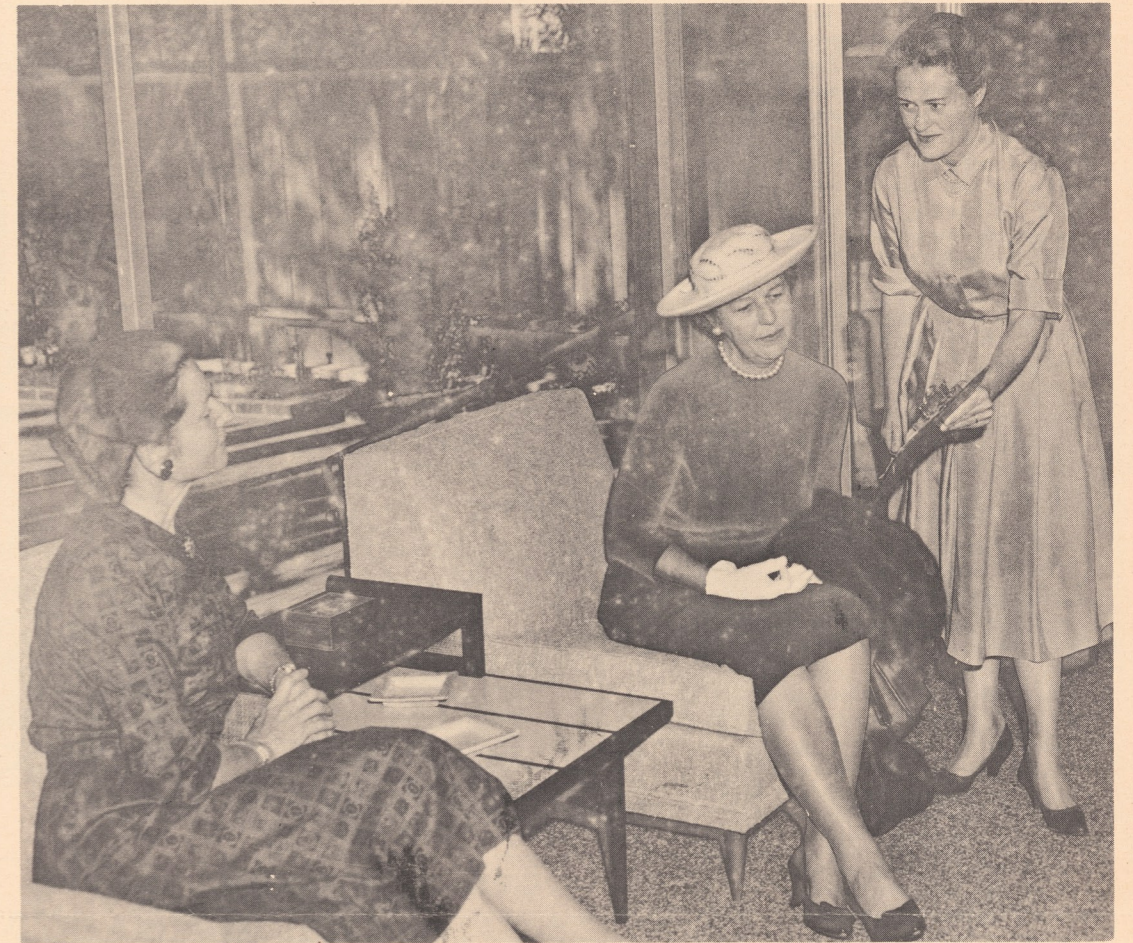
Mrs. Wendell K. Wheelock, is tour chairman with Mrs. H. Ray Millard, co-chairman. Mrs. Wheelock announces that transportation from the Garden Club will be provided by husbands of club members in private cars, which will leave the Club between the hours of 11 a.m., and 4 p.m.

During those hours, tour patrons are invited to enjoy a "finger-food luncheon" at the Garden Club.

Residences to be viewed include those of Messrs. and Mmes. Gifford C. Ewing, Hans Karl George, Hardy H. Kent, Howard Steinwinter, John M. Wilson and Mrs. Fred C. Manning.

Hostess chairmen for the homes are: Mrs. Alwin Trepte, Ewing gardens; Mrs. Harry E. Wenz, the Georg residence; Mrs. William Weddell, Kent home; Mrs. Reginald Clotfelter, Manning residence; Mrs. C. K. Whitaker, Steinwinter home, and Mrs. Raymond H. Gordon, Wilson residence.

Other committee chairmen are Mrs. John W. Bancroft, flower arrangements; Mrs. Frank W. Peters, hostess; Mrs. Walter H. Grimm, advance sale of tickets; Mrs. Gilbert S. Currie, tickets; Mrs. Paul W. Roberts and Mrs. John W. Graham, luncheon and tea; Mrs. Charles A. Chapin, tea table arrangement; Mrs. Sydney R. Nelson tea table flowers; Howland H. Ford, men's transportation; Mrs. C. Gray Stewart, publicity, and Mrs. Thomas P. Faulconer, posters.



ARRANGEMENTS COMMITTEE — Mrs. Charles A. Chapin, left, is in charge of tea table arrangements for the Garden Club's annual Home and Garden Tour planned April 23-24. In charge of the sandwich plate lunch which will be served tour guests at the clubhouse are Mrs. John W. Graham, center, and Mrs. Paul W. Roberts.

By allowing four average car lengths, or about 80 feet, your car will be able to stop in time. Without this safety margin there could be an accident.



Traditional Countrywear
for
Men and Women

RANCHO SANTA FE — PLAZA 6-1996

GEORGHOME — Mrs. Arthur Thorne, left, president of the Garden Club, and Mrs. Hans Karl Georg, pose before the convenient and colorful tiled outdoor cooking area in the wide loggia of the Georg's rambling ranchhouse, one on the the annual Home and Garden Tour planned April 23-24 by the Garden Club.

Designed by the late San Diego architect, William Templeton Johnson, the house commands a circle view of the Ranch and its surrounding mountains. The adobe house is painted white, accented with a peacock blue iron railing.

The spacious grounds contain four handsome spreading stone pine; a vegetable garden; a cut flower garden and flowering fruit trees. Mrs. George is justly proud of her collection of Meissen and Delft china, displayed in a handsome cabinet in her living room, which features Australian eucalyptus for its ceiling.



STONE LANTERN — Make a gracious entrance to the house at the left, home of Mr. and Mrs. Hardy H. Kent, is the low stone lantern at the entrance of the walk to the door. This is one of the six homes scheduled for viewing on the forthcoming Home and Garden Tour, April 23-24.

There is a restrained charm and dignity of furnishings to this attractive, low-lying house, its subtle coloring making for a feeling of relaxation and pleasure in its vistas.

The garden has colorful flower borders; an open lath house is situated in the protected portion of the garden.

MacFarlane's
EVER FRESH



CANDIES
also — CERAMICS
GIFTS — CARDS
THE NOOK

"In Friendly Encinitas"
552 FIRST ST.

COVER PICTURE — Of international fame is the garden pictured on this month's cover, that of Mr. and Mrs. Gifford Ewing. The house is of earlier origin on the Ranch than some of the others arranged for the Home and Garden Tour, designed in the gracious manner of more traditional architecture.

But the gardens are the main attractions on this estate. They are tremendous in scope, featuring ancient live oak trees trucked in from Julian and the mountains years ago. There are quiet and sheltered gardens within gardens, expansive wooded areas stressing the planting of moisture-loving specimens not usually grown successfully in Southern California, and an herb garden.

ESTATE QUALITY — The home of Mrs. Fred G. Manning, below, has the aspect of an estate, with its fluid-type garden, marked with a swimming pool and a pool-side lanai.

The house is large and impressive, contemporary in feeling yet with emphasis on a combination of classic design with today's use of furnishing.

Tour patrons will be welcome to wander at will through this horticulturist's delight, which has beauty and grandeur demonstrated by the use of tiny, delicate blossoms together with bold and gay masses of color.



Wilson Home Described

Due to a camera mishap, the sixth home on the Garden Club Tour, that of Mr. and Mrs. John M. Wilson is not included in this group of pictures.

And we regret this particularly for the formal garden of this hillside home with its flagstone terrace and brick encircled fountain (a bronze dragon from Hongkong) has a special charm. Harriett Wimmer designed the formal garden.

Steps leading up from this

take one to a patterned succulent garden, design of that eminent Japanese landscape gardener, Ito. Entrance to the home is flanked on either side with Chinese bronze temple dogs, and a willow blue container holds a small pine.

A feeling of ease is achieved in the decor of the house, which affords the inmates near and far views of special beauty as one looks out through doors and windows.



POST ADOBE — is the name given to the type of construction of the Howard Steinwinter home, above, also being opened to the public for the Garden Club tour. The design features traditional combined with contemporary and finds itself happily situated in a country-like lemon grove with views of surrounding hills and valleys.

The landscaping demonstrates a successful growth and melding with the land within a few years time. A small garden gives an impression of space; maintenance ease is evident yet the aspect is one of care and specialization.

This is an adaptable house, making use of the open design for entertaining and pleasurable home living.

Norma's Gifts & Baskets

Complete line of unusual gifts and earrings.

Hawaiian
Colognes - Beach Hats - Sandals

Open daily and Sunday 'til dark.

266 N Hwy. 101 - Encinitas



RED CROSS INTEREST — Taking part in the March meeting of Rancho Santa Fe Branch of Red Cross were the speaker, Mr. James T. Nicholson; the chairman, Mrs. B. Filsom Jenkins, also seated; and standing, left, Mrs. Clifford Tanner, vice chairman and Mrs. George Wein- hagen Jr., hostess.

Red Cross Meeting Planned April 6

Rancho Santa Fe Branch, San Diego County Chapter, American Red Cross will meet 11 a.m., April 6, in the home of Mrs. B. F. Jenkins on Mimulus street. Anyone who would care to sew or knit with the production committee will be welcome. It is customary to bring a sack lunch. The work session follows the board meeting. Articles are made for the Naval hospital and the Home Service.

At the March meeting, held at the home of Mrs. George Wein- hagen Jr., James T. Nicholson, former National Red Cross executive vice president, talked on national and international aspects of Red Cross work. He also stressed the March fund appeal which was conducted by mail under the chairmanship of Mrs. Hampton Wall. Mr. Nicholson is

the brother of Mrs. Francis Hart, a resident of Rancho Santa Fe until last year.

Mrs. Jenkins, chairman, appointed Mrs. Clifford Tanner as vice-chairman to succeed Mrs. Russell Lloyd, who is moving away.

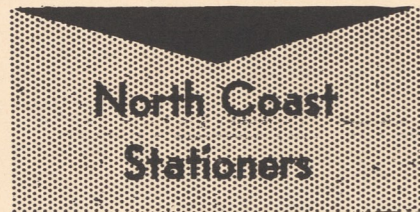
Fascinating DISH GARDENS CACTUS SEED 25c pkg.

at

Lessar Nursery
CACTI and SUCCULENT WONDERLAND

PLateau 3-5192
396 N. Highway 101 Encinitas, Calif.

A Store for the Convenience of Rancho Santa Fe Folks.



127 North Highway 101 SOLANA BEACH SK 5-4923 — Helen E. Priseler

Stationery Supplies for Home & Office Artist's Materials Hallmark Greeting Cards Gift Wrappings Books

JOHN COLE'S Book & Craft Shop
7871 Ivanhoe Ave.
LA JOLLA, CALIFORNIA
GLencourt 4-4766



We RE-FINISH, REPAIR Buff and Lacquer

SILVER GOLD TIN COPPER BRASS CHROME

and other metals

Special Attention Given to Antiques

PACIFIC PLATERS

120 Cliff Street
Solana Beach
SK 5-4147

Rancho Santa Fe Country Homes and Homesites R. M. CLOTFELTER

Licensed Real Estate Broker

Since 1931

PLaza 6-1422

Paseo Delicias

Copper Miss Kennels Training Boarding & Inside Sleeping Quarters Blackie & Vi Yates 155 Saxony Rd. ENCINITAS PL 3-3142



Golden Door Event Promises 'Golden Bonanza' For Foundation

The big party at the Golden Door, Escondido, April 7, is to be a golden bonanza for the Theatre and Arts Foundation of San Diego County, which it is to benefit. For the popularity of this event, from the very first news release, has been such as to delight and astonish those in charge.

Mrs. Fred Phleger publicity chairman, confides that this fashion show luncheon was planned for 500, and that was the full number of invitations printed. But before these could be mailed telephone calls for reservations had topped this figure, with daily clamors for more. Such eagerness might have been ignored by some less strong souls, but since its inception some five years ago the Theatre and Arts enthusiasts have undertaken many things, inspired by their big goal, a worthy cultural center for the arts in the beautiful setting already chosen in La Jolla.

So everyone concerned, from Mrs. Edward Longstreth, president of the Foundation, and Mrs. Hunter M. Muir, party chairman, adjusted and reset the party guest figure to a 1000. Even so the last ticket has been gone for days past, and the list of hopefuls reserving on the

strength of cancellations is still growing.

Mrs. Edmund Bordeaux Szeke- ly, who is not only hostess in the sense of opening her Golden Door for the event, but also for the luncheon, has doubled her order for an Indian curry menu which promises to be enticing to the eye and provocative to taste.

"Easter Wherever You Are," theme of the fashion show, will be carried out in the all-designer creations to be paraded by 18 fashion models. Show commen- tator will be Russell Carpenter of New York. Ramps will be so constructed that guests may have eyes full of every tempt- ing costume.

The show is set for 2 p.m. Luncheon will be at 1 o'clock.

At noon a Golden Champagne social hour is set up to tempt patrons to further benefit the cultural project.

Decor will be as pink as peach blossoms, there will be music by a four-piece orchestra and the Bonaires will present two 20- minute shows.

Rancho Santa Fe is supporting this benefit most generously. It is reported that per capita, Ran- choites have bought the most tickets! Special buses will be bringing visitors from as far away as Palm Springs.

CHURCHILL & CASSOU HARDWARE

• Dutch Boy Paints • Frigidaire Appliances

140 E. Grand ESCONDIDO SH 5-2441

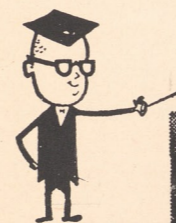
Where Quality Tells and Service Sells

SPANISH - FRENCH - RUSSIAN

Private, Group or Residential Lessons

in any spoken language

AT THE WORLD FAMOUS



berlitz
SCHOOL OF LANGUAGES

for Information Call
GL 4-4811
CY 8-0490

1255 Cave Street La Jolla

3320 Fourth Ave., San Diego

COLORFUL

CIRCLE R RANCH and GOLF RESORT

- GOLF AT ITS BEST — (Complete Facilities)
- DINING AT ITS BEST — (Complete Facilities)
- LUXURY LODGE — FINEST & INEXPENSIVE

• SPECIALTIES: Bavarian Nite, Thur. - Buffet, Sun., 4:30 on.

Visit the Terrace Room - Dinners Wed. thru Sun. - Cocktails daily 25 Min. from Rancho - on Hwy. 395 - 9 mi. N. Esc. - SH 5-8029
Herb Rauch, Gen. Mgr. "Moon" Mullins, P.G.A.
" YOU and YOUR GUEST ARE CORDIALLY INVITED"

OUR FAMOUS DRIP DRY COTTON
by WAMSUTTA

(The 4-yard Skirt has 6-inch Hem.)

Sizes 6-16 in Fresh Garden Colors - \$12.98

Daby's
RANCHO SANTA FE

Daby's
RANCHO SANTA FE

Private Golf Club Planned

(Continued from page three) ter, James W. Stockton, Hampton G. Wall.

The Committee's letter to the Board dated Feb. 5 follows: Gentlemen:

In response to your invitation of Jan. 18, 1960, the Committee for Forming a Club at the Rancho Santa Fe Golf Course is pleased to present its proposals.

There are few property owner Associations in this country that have been as successful as we in maintaining our high standards of landscaping, subdivision, home design and general attractiveness. To maintain these standards, we limit and control as is required. We limit the use of our tennis courts and our trails. This Committee believes that we should likewise limit the use of our golf course. We believe that it is no longer necessary to depend upon the general public for the support of our course.

We believe that the operation of a public golf course in the heart of Rancho Santa Fe has tended to degrade and will continue to downgrade the entire community. All Association members, whether golfers or not, will benefit substantially when our golf course ceases to be wide open to public use and abuse.

As the solution to this problem, our Committee offers the proposals listed below. In addition, we submit herewith:

1. Financial projection for the proposed Rancho Santa Fe Country Club.

2. Proposed membership classifications.

3. Proposed by-laws.

WE PROPOSE:

1. That a non-profit corporation be established to lease the golf course and related activities from the Association and operate them as a club.

2. That priority and preference will be accorded to Association members in the matter of club memberships and fees.

3. That the goal of the club will be to have its regular membership limited to Association members, but in order to fill out its membership now, others will be admitted on a selective and restricted basis.

4. That the club will be operated and improved so as to

best fulfill the recreational requirements of resident Association members.

5. That the club fairly compensate the Association for the use of the golf course. The amount of the compensation to be negotiated on the basis of the need of the association for funds for administrative purposes over and above that received from property assessments.

6. That the Association recognize that all improvements made by the club will accrue to the benefit of the Association.

7. That control of the club will remain in the hands of Association members; at least two-thirds of the board of directors of the club will be resident Association members.

8. That the club assume the responsibility for the management and maintenance of all land, buildings and equipment used by the golf course, Pro Shop, restaurant and bar, and will insofar as is practicable, utilize all personnel now employed by the Association in operating these activities.



A Truly Fine Travel Service . . . MOST CONVENIENT . . . To The Ranch

- ★ Airline & Ship Reservations
- ★ Cruises
- ★ Resort & Hotel Service

— IMPORTANT NEWS —

INTERESTED IN TRAVEL INFORMATION?

. . . We have it . . .

Phone SK 5-1515 or

Just Clip The Coupon & Mail To:

Del Mar Travel Bureau
1150 Highway 101
Del Mar, Calif.

Please mail me travel folders on the area that is checked:

Name

<input type="checkbox"/> Europe	<input type="checkbox"/> Mexico	<input type="checkbox"/> Air
<input type="checkbox"/> Hawaii	<input type="checkbox"/> Alaska	<input type="checkbox"/> Ship
<input type="checkbox"/> Orient	<input type="checkbox"/> So. America	<input type="checkbox"/> Cruise

Address

Village Church Notes Reported For Month

With the growth of the Ranch, the duties of the Village Church rector have increased correspondingly, so relief is now in sight.

By the action of the Session, Rev. Hansen Bergen, retired Presbyterian minister of La Jolla, has been invited to become assistant to the minister and will arrive June 1 to begin his duties.

Particular activity assigned to Rev. Bergen is that of parish visitation.

There is a new church school superintendent, Mrs. H. D. Heltzel, who has been teacher trainer at the La Jolla Presbyterian Church.

Mrs. Robert Francisco, Mrs. Paul Dobson, Mrs. Harry Wenz will form a committee studying wedding policies of the church; use of the church, procedure, et cetera.

Vines Serve Many Ways

Can you use a vine to cover a blank wall, soften a harsh line on a fence, or to provide overhead shade in hot weather?

You have a concrete or brick wall you want to cover choose one of the clinging vines that attach themselves one way or another to the surface. Boston ivy or the common ivies are suitable. So are creeping fig and Virginia creeper.

To cover a trellis or pergola you want to let in sun during choose a wisteria or grape if winter.

JANE BRETT, Realtor

La Granada — Rancho Santa Fe
PLaza 6-1442

RESIDENCES — HOMESITES

INVESTMENT ACREAGE IN SAN DIEGO
AND RIVERSIDE COUNTIES

OLA JOHNSON . . .

CASH DISCOUNT SALE

GARDEN SHOP
and LANDSCAPE SERVICE

GARDEN SHOP

COMPLETE NURSERY & GARDEN SUPPLIES

FLORAL SHOP

CUT FLOWERS — CERAMICS ACCESSORIES

WE NOW GIVE *LA* GREEN STAMPS

Rancho Santa Fe • In the Village Center on La Granada • PL 6-1427

SEE US FOR

Carpet, Linoleum & Formica

also

Draperies & Floor Tile

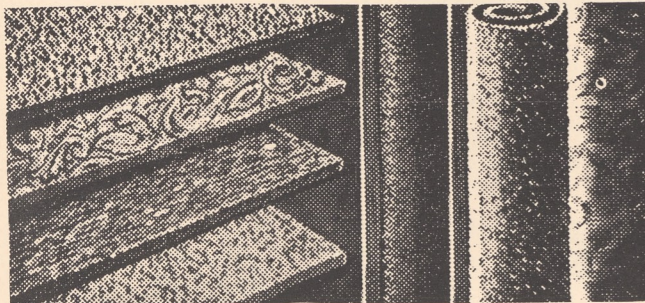
- TOP QUALITY
- BOTTOM PRICE
- BEST SERVICE

Closest Carpet Specialty Shop to Rancho Santa Fe



Magic Carpet Co.

115 North Highway 101
Solana Beach
SK 5-2116



Save ON FLOOR COVERINGS

HACIENDA NURSERY

HAS EVERY BLOOMIN' THING

Largest Selection of Plant Material

in the Escondido Area — on Hiway 395 South

LANDSCAPE WITH LIVING BEAUTY

Phone SHerwood 6-0243

GENE PEREGOY — OWNER

LANDSCAPE DESIGNER & CONTRACTOR B. S. O. H.

STATE LICENSED CONTRACTOR

CUSTOM FENCING • SPECIMEN TREES • PATIOS
ORIGINAL GARDEN SCULPTURE & MOSAICS BY JAMES GRAY



DAY AT THE RACES — These three members of the Country Friends, Mrs. Walter Wencke, Mrs. James Hopkins and Mrs. G. T. Davis, are getting in good with the horses in preparation for philanthropic organization's "day" at Caliente, April 30, a buffet lunch to be served in the Turf Club at 1 p.m. Racing will start at noon.

Day At Races Country Friends Plan Fund-Raising Project

And now The Country Friends have turned to the horses to further their philanthropic program. They have scheduled a "Day at the Races," at Caliente, April 30, to which members and their friends are invited.

Mrs. Dorothy Patton of Rancho Santa Fe is president of The Country Friends, an organization designed to assist monetarily and otherwise San Diego County charities.

Cocktails will be served in the Toro Room followed by a buffet lunch at 1 p.m., in Caliente Turf Club. Tables for four, six and eight will be arranged. Racing will start at noon.

Mrs. Edward D. Havens, of the Ranch, chairman for the day, announces that tickets are \$5 each and may be purchased from Mrs. James F. Hopkins, ticket chairman, of Rancho Santa Fe, or from any of the area

directors. Reservations are limited to 500.

Co-chairmen are Mrs. R. G. Medlicott, of Rancho Santa Fe, and Mrs. John Athaide, of San Diego.

Committee chairmen include Mmes. James Hopkins, tickets; Garland Davis and Horace Blackman, publicity assistants; Houston Stiff, courtesy secretary; John Manchester Cook, bus, all Ranchoites; Edmond Sullivan, of La Jolla, general publicity.

Area directors are Mmes. Walter Wencke, of Rancho Santa Fe, who also serves as coordinator of area directors; Waldron J. Cheyney, of Del Mar; C. J. Wittmer, of San Diego; Robert E. Zimmerman, of La Jolla; Norman Berk, of Cardiff; Ralph Dusenbury, of Carlsbad-Oceanside; James Bixler Jr., Vista-Fallbrook, and J. F. Jeffries,

Ramona-Escondido.

Mrs. Wencke will entertain her committee at a luncheon April 5 in her home. They are Mmes. James R. Ridgway, Edward A. Merrill Jr., J. Lyle Brinkerhoff, G. S. Rasmussen, Harold C. Nigg and John Manchester Cook.

Filing of State Income Return Early Requested

Taxpayers in the San Diego area are urged by Alan Cranston, chairman of the Franchise Tax board, to file their state income tax returns as early as possible. The state income tax office at 230 San Diego Trust & Savings Bank building, 530 Broadway, will be open Mondays through Fridays, except that it will be closed on Good Friday, April 15, from 12 noon to 3 p.m.

INTERNATIONAL SPORTSMEN CHOOSE **DAKS**
Imported from England
... the trousers famous for their trim, comfortable beltless tailoring ... their adjustable waistband ... their magnificent lightweight British wools. In a new collection of colors and weaves. Now priced from **\$29.95**

Daby's
RANCHO SANTA FE

NOTICE!
OUR NEW LOCATION
OPEN MARCH 22nd
AMPLE PARKING IN REAR

Kapherr's Frozen Food Center
312 North Highway 101 (Near Orpheus)
ENCINITAS, CALIFORNIA — PL 3-2211

Only Prime U.S. Choice Beef
RENTAL LOCKERS

Tee Time Totalities

The Rancho Santa Fe Golf Club finished off team matches in March and immediately started on its tournament schedule with a Men's Twosome. The schedule is due to end Dec 11 with a Christmas Turkey Shoot.

New innovations this year will be a Southpaw Best Ball of Lefties against Righties, a Father and Son Invitational on Father's Day, and the President's Cup to be match play instead of medal play.

The Men's Twosome found Gordon Francis and Bob Schmedding winners, with a score of 140. Dick Christopher and Art Vangness followed with 143 and Watt Reagan and Paul Perreta were third with 147.

The RSF Ladies Golf Club Invitational is set April 3, with a mixed twosome, best ball of partners and strokes as they fall at 10 a.m.

Southpaw Best Ball is planned April 10 at 10 a.m.

Boots Hall reports much enthusiasm among Ranch daughters for her junior group of golfers, the Divotettes, who plan a day of playing at Meadowlark Ranch soon.

Another golf group being formed is that of the Junior Boys of Rancho Santa Fe, with Ken Knudsen, Charlie Gibbs and Jim Stockton taking on the task of organization.

Hear the 1960 Year Book is due in the mails this month. Wendell Wheelock and Dave Hire are a committee of two compiling it.

New members include Harry H. Wilson of La Jolla; Norm Jacobsen, Dave Weitzel, Leon E. Goodman, Murray Church, of Del Mar; Abe L. Stowell, of Encinitas; Eldred A. Coles, of San Diego; Capt. Harr W. Huking and James R. Irwin, of Rancho Santa Fe; Bruce Faulkner of Cardiff.

Double Career

Dr. Marsh Morrison, a writer and chiropractor who has recently moved from Los Angeles to La Jolla, plans to continue both careers. A journalist who progressed to scientific papers and novels, Dr. Morrison will devote mornings to writing and see patients afternoons.

FREE DELIVERY
to Rancho Santa Fe
every Monday and
Thursday

SIRENE'S
for the finest
LIQUORS & WINES
"The Friendly Store in Solana
Beach north of the traffic
lights"
SK 5-2112

MARSH MORRISON, D. C., F.I.C.C.

and
VERA L. YOUNG, D.C.

Palmer Graduate Chiropractors

With complete instrumentation for locating and measuring nerve-root compression of spinal nerve trunks, and the facilities and training for correcting same (where non-irreversible pathology makes correction possible).

**PRACTICE LIMITED TO CONDITIONS
OF DISTURBED NERVE FUNCTION**

5708 La Jolla Boulevard
Res. HUDSON 8-9561

By Appointment
GLencourt 9-1233

"In case of illness, look first to the spine" — Hippocrates

PAUL T. GALLEHER

REALTOR

Country Squire Courtyard

Rancho Santa Fe

JOYCE GARTON — ASSOCIATE

PL 6-1180

**FOR SALES
AND SERVICE
WITH
GUARANTEED
SATISFACTION...**

**PETERSTON
FORD**

100 NORTH HIGHWAY 101

IN ENCINITAS
YOUR NEAREST FORD DEALER
PLATEAU 3-1161

Benbough's
LA JOLLA

**Fine Furniture
and Interiors**

7643 Girard Ave. — La Jolla — GL 4-0341
"Serving Southern California for over 53 Years"



ORCHIDS TO YOU — Leon Janinet made his orchid hothouse available to Garden Club members for a recent Garden Forum. Discussing his phenomenal success with orchids are left, Mrs. Gifford Ewing and Mrs. Arthur Thorne, with Mr. Janinet.

Registration Area Designated In Ranch Office

With less than a month remaining for registration of voters prior to the June 7 primary election, the office of Charles J. Sexton, Registrar of Voters for San Diego county, has arranged for registration depots at strategic points in many communities. Final date for registration is April 14.

In Ranch Santa Fe, the Ripley H. Copeland office in the village will be open 9 to 5 Monday through Friday.

District Votes Summer Blooming Bulbs Offer Many Fine Ranges Of Color

Directors of the Santa Fe Irrigation District voted at a recent meeting to agree to a proposal by the city of San Diego to deliver water from the second aqueduct as long as the district does not relinquish any right under the contract of 1956 for runoff from Lake Hodges.

Point of delivery for water at present is the first aqueduct.

Water from the second aqueduct will travel a much shorter route by flume to the district lines than currently. It is anticipated this may improve the quality of the water.

Following the change-over the city plans a complete reconditioning of the flume leading from the first aqueduct to the point where it will be in use from the second.

In other business directors made a request to the city of San Diego for water for the current year ending Sept. 30. A minimum of 3225 acre feet and a maximum of 4300 was set.

The district is required to pay for the minimum request whether it is used or not. Any amount needed over the maximum request is sold to the district at an increased rate. Last year's total usage was 3963.99 acre feet, the greatest amount ever used by the district.

The summer-blooming bulbs may lack the cheery brightness of their spring counterparts. But, they make up in size and bloom for any such shortcoming. They are big and showy. What's more, they come at a time when we can enjoy them, not as so many spring bulbs, in the middle of a rain storm.

Most gardeners are familiar with old summer standbys such as the gladiolus, dahlia and tuberous begonia. But many have yet to meet such other gaudy specimens as tigridia, agapanthus and amaryllis.

Tigridia bulbs are in good supply once again. A big freeze some years back wiped out much of the commercial crop and strictly limited supply. They are definitely for every garden, putting forth gorgeous, three-cornered tiger flowers in mid-summer. Each bloom lasts one day, but each bulb puts out a staggering succession of blooms.

Women's Council Plans Luncheon Meeting, April 20

For the first time the Women's Council of the Village Church will hold a luncheon for its monthly meeting.

The affair is planned April 20, at 12:30 p.m., in the Church school, and all women in the community, whether members of the church or not, are invited.

Mrs. Victor Venberg, World Service director of the board of the Women's Council, has arranged as speaker for the day Mrs. Charlotte Hamrick, World Service secretary of the Los Angeles district office.

Mrs. Paul Dobson is chairman for the day, with Mrs. Glenn E. Mitchell, decoration chairman.

The board meeting of the Women's Council will be held April 12 at 10 a.m., in the home of Mrs. H. W. Cook.

The gardenia likes its soil on the rich side with plenty of humus. Some people plant them in a mixture of pure peat moss and leaf mold — the combination imparting a slight acid condition which is also good.

gifts by

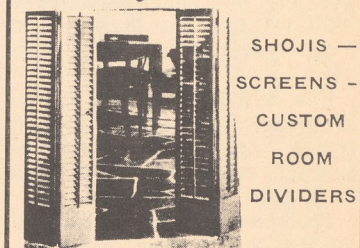
Distinctive

IMPORTED & DOMESTIC CREATIONS

5649 LA JOLLA BLVD. GL9-2921

For that "different" gift, be sure to choose from Gifts by Hoda, which means, distinctive giving for elegant living.

L'Unique Shutters



SHOJIS —
SCREENS —
CUSTOM
ROOM
DIVIDERS

Save 50%
Fine custom-made shutters, measured and tailor-made for your windows, un-painted or beautifully painted. Instructions to install them yourself. Guaranteed fit, highest quality material and workmanship.

J. Stewart St. John
Inspired Interiors
Betty St. John

L'Unique
5702 La Jolla Boulevard
LA JOLLA, CALIF.
Telephone GLencourt 4-5565
Wall Papers - Exclusive Fabrics
Custom Made Draperies

HOME CALL \$4.95

SK 5-1653
135 S. HWY. 101
SOLANA BEACH, CALIF.

FIDELITY RADIO TELEVISION SERVICE
(BUCK COWLEY) OWNER-MANAGER
PERSONALIZED SERVICE

RCA SALES
COLOR - BLACK & WHITE
STEREO - RADIO

SERVICE
ALL TV, RADIO, HI-FI,
ANTENNAS, CUSTOM
ELECTRONICS -
FOREIGN or DOMESTIC

NOW . . . 'TIS SPRING PATIO FIX-UP TIME!!!

ALUMINUM — REDWOOD — RATTAN

CHAIRS — CHAISES — TABLES — BENCHES
COVERS — PADS — UMBRELLAS — POTTERY — DISHES

Patio - Lanai Shop
5542 La Jolla Blvd. — LA JOLLA — GL 4-7733

RANCHO POOL OWNERS—
Can we help you ready your Pool for this season?
Algae check? Filter check?
New Equipment?

The VERY BEST in ALL-INCLUSIVE monthly pool maintenance.

Complete line of CHEMICALS and SUPPLIES

For YOUR personalized, LOCAL service call Michael Kirchhof,
RANCHO SWIMMING POOL MAINTENANCE
PL 6-1427 (c/o Ola Johnson Garden Service)

It costs NO MORE to have the FINEST

LANDSCAPING
• New Lawns
• Specimen Plantings and Ground Covers •

ROCKSCAPING
Rock Mound Gardens
Textured Stone . . .
Ground Covers in All Colors.

PATIOS
Floors of Brick, Clay Tile, Flagstone, Concrete (Plain or Colored)

Ornamental Retaining **WALLS**
In Stone, Brick, Flagstone or Block.

SPRINKLER SYSTEMS
Designed and Installed.

FENCING
ALL TYPES
EASY CREDIT TERMS
• One Contract
NO MONEY DOWN
• Take 3 to 5 Years to Pay!
FREE ESTIMATES
PLato 3-4555
Macpherson Garden Center
955 First St. (Hwy. 101) ENCINITAS

FEATURING:—

- Dresses
- Sportswear
- Lingerie
- Accessories

SUDDENLY IT'S SPRING AT THE **REGINA SHOPS**

- Unique Gift Imports
- Complimentary Gift Wrapping

ENCINITAS 594 First St.
SOLANA BEACH 111 S. Acacia
DEL MAR 1226 Highway 101

STEINWINTER & BANCROFT
GENERAL CONTRACTORS
RANCHO SANTA FE

Land Deals Reported

The following real estate transfers have been recorded since the last issue of the Bulletin went to press.

Purchasers whose names appear in bold-face type are new Covenant members of Rancho Santa Fe Association.

Harold Cook for portion of lot 8, block 34.

John Kaufman and White for portion of lot 6, block 29.

Gilbert S. and Dorothy A. Currie and Ralph A. Jr., and Marion Perkins to **Paul and Dorothy Thompson**, portions of lot 4, block 22.

Edith E. O'Brien to Harold C. Morton, portion of lot 2, block 38.

Tropical Look Easy

The tropical look is easy to come by in California. Take the palms for instance. We don't try to grow the tall coconut palm, but we do have others. The California Association of Nurserymen reports that member nurseries stock several varieties, some of which have a definite tropical appearance. The stately, slender-trunk Queen Palm is an example — growing to 40 or more feet tall with a feathery crown of arching fronds. It is best where it gets plenty of water.

Also in the palm family and widely adapted are the reed-like Lady palms or bamboo palms. These grow in decorative clumps, seldom more than 8 feet tall, and are well suited to a corner of the patio. Moisture and rich soil are preferred.

Easter Dresses

sizes 1-14

Easter Hats

Easter Bunnies & Lambs

Church-going Suits for Little Boys

sizes 1-8

SMALL FRY

566 First Street Encinitas

Ranch Little League Activities Receive Community Assistance

There are to be Little League activities on the Ranch this summer. So says the program coordinator, Rev. Chester L. Tolson in refuting a recent rumor to the effect that the Little League would be abandoned.

There are to be two Ranch teams, one the Major League and the other the Minor League. In this way, says Rev. Tolson, any boy between the ages of 8 and 12 who wishes to play baseball will have the opportunity to do so.

Victor Mature will sponsor the Major League, which will be managed by Mike Kirchof. Assistant coaches will be Ben

Fletcher and Rev. Tolson.

The Minor League, to be known as the Ted Williams' League, will be coached by Al Dutton.

The home games are to be played in the Richardson Memorial Park and Mrs. George Richardson already is readying the park for the games, a new fence, a backstop, restrooms and other needed improvements.

Gardener's Checklist

Many rhododendrons are blooming — or will be soon — which means it's a good time to shop for these regal beauties.

As blooms stop on camellias, feed with acid-type fertilizer or liquid fish. Three or four alternate feedings with these can be made between now and late summer.

STAG & DOE



Sportswear

SOLANA BEACH

(Opposite Theatre and Market Basket)

Everyone is Most Impressed with Our Ample Stock of

LOVELY NEW

SPRING COORDINATES

IN BEAUTIFUL PASTEL TONES OF

- ★ LILAC
- ★ CREAM PINK
- ★ CORAL
- ★ SUN YELLOW
- ★ FROST BLUE
- ★ SUN MIST GREEN

SKIRTS — BLOUSES — CAPRIS
JAMAICAS — SWEATERS — BULKY

ALL DYED - TO - MATCH

FOR EXQUISITE COORDINATED ENSEMBLES

GOOD MOVING starts with an HONEST ESTIMATE

Pick your mover for dependability — starting with an honest, dependable estimate.

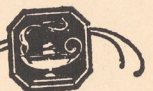
All first class movers charge standard rates — the "cut rate" estimate is usually a bluff instead of a "bargain."

Before you move, get our detailed estimate, our honest description of our services. There's no cost or obligation.

COLE MAYFLOWER

COLE LA JOLLA TRUCK & STORAGE CO.
7851 Herschel GL 4-0444
For Information or Service Please Call Collect

Helen M. Eldridge and Associates



5640 LA JOLLA BOULEVARD
LA JOLLA, CALIFORNIA
GLENCOURT 9-2651

- Lighting Fixtures
- Lamps
- Lightscaping

Because You Love Nice Things.

Scout Coordinator

Hugh Verano has been named coordinator of all Boy Scout activities in the community, presently under the Village Church supervision.

The activities to be coordinated include the Cub Pack, Boy Scout Troops and Explorer Scout groups.

K. L. Shepard is to be the new scoutmaster in the community.

Dog Data: Do's, Don'ts

For the benefit of the many Rancho Santa Fe residents who are dog owners — and lovers — the Dog Control Ordinance No. 1031, affecting entire San Diego County, is printed.

All dogs in the unincorporated area of San Diego must be licensed after attaining the age of four months. Licenses are due Jan. 1; after Feb. 15 there is a \$2 penalty.

Mail a check of \$2 per dog for the license, with your name, address and a description of the animal to the Tax Collector at the Civic Center, San Diego. It is not necessary to come into the Civic Center in person.

Attention is called to the following provisions:

Section 19. Restraint of dogs by owner. Every owner shall restrain his dog or dogs from:

a. Running at large on public property or running at large on private property, not his own, without the permission of its owner or possessor.

b. Denying the public access to or interfering with public use of public thoroughfares.

Herb Garden Finds Favor

Ever toss a swatch of bay leaves on a charcoal fire and soak up the aroma it imparts? Do you like the fragrance of freshly-crushed mint in a tall glass of lemonade? Most of us can say yes on both counts, which accounts in part for the perennial infatuation with fresh garden herbs.

But this is only part of the fun. The rewards of fresh herbs in culinary pastimes can make the difference between labor and pleasure in the kitchen — the difference between a meal and a work of art.

While the use of herbs may be an art, the growing of them requires nothing special.

When planning an herb garden, the housewife is your best source of what should be includ-

ed. Certainly, however, the basic garden should include such stand-bys as Parsley, Sage, Chives, Thyme, Marjoram and Rosemary. Savory, Basil and Tarragon are also easy and desirable. So many people have spent time rooting out mint that has grown rampant that we hesitate to recommend it. No herb garden is complete without it, however.

Where to plant herbs? Parsley makes an excellent border. Mint is traditionally at home by a dripping faucet. Sage, by virtue of its gray foliage, fits into most garden schemes. The others do nicely in pot or ground. The Nurserymen suggest you keep them handy to the outdoor living area where they are on hand at barbecue time.

Most Convenient
... TO THE RANCH
Del Mar
Liquor Store
1446 Hiway 101 SK 5-1733

ENCINITAS CABINET SHOP
859 HIGHWAY 101
PLateau 3-5346

It's DEL MAR DRUG for . . .

PRESCRIPTIONS
our specialty — skillfully and promptly filled!

- Complete line of sundries — cameras, films candies, etc.

EXCLUSIVE COSMETICS
featuring . . .

- Elizabeth Arden
- Dorothy Gray
- Guerlain's
- Max Factor
- Faberge
- Revlon

1436 Highway 101, Del Mar • Phone: SKyline 5-2502

NICE TO GIVE . . . BUT BETTER TO GET A FINE PORTRAIT
by
MODERNE PHOTOGRAPHY
SKyline 5-1876 Solana Beach On the Plaza

Regular Studio Hours
Mondays to Fridays, 10 a.m. to 5 p.m.
Other Hours by Appointment

Eugene B. Fletcher Co., Inc.
Choice Residences — Building Sites
Investment Properties
COL. SIDNEY OFSTHUN, Associate
PLaza 6-1882 SKyline 5-1545

Encinitas Pet Shop and Grooming Parlor
629 First St. - Hiway 101 - Encinitas
AMPLE PARKING IN REAR

Fresh and Frozen Nebraska Horsemeat Products.
Reservations for Grooming Desirable.
Phone PL 3-3744

- Grooming - Bathing
- De-Fleaing
- Pet Remedies
- Pet Supplies
- Pets — Birds
- Gold & Tropical Fish



'HARD LUCK' — That's what the San Dieguito Cotillion young people enjoyed at their monthly dance, Feb. 20 in the Ranch Garden Clubhouse.

Vehicle Safety Check Benefits County Drivers

Better than half of the cars checked by the police in this year's Vehicle Safety Check have been found unsafe according to David Thompson, executive director of the San Diego County Traffic Safety Council. An average of 54 per cent of the cars checked so far this month have been ineligible for the 100 per cent safe sticker.

In this week's check 120 cars were judged safe as compared to 179 that failed to receive a sticker.

One hundred and four failures resulted because of smooth, cracked, or otherwise unsafe tires. License plate lights, stop lights and parking lights were the causes next listed for vehicles failing.

LEUCADIA VILLAGE FORGE

• **Curtain type fireplace screens made to order:**

Any size, any shape
In 13 decorator finishes

• **Name signs to order**

1646 N. Hiway 101 PL 3-1641

For the **NEWEST** and **LATEST** — See
Chrysler - Imperial - Dodge



Hidden Valley Chrysler Dodge
Dodge Darts & Trucks
221 N. Broadway — Escondido — SHerwood 5-5311

State Plans Acquisition Of More Park Land

More park lands will be acquired by the State of California, according to Cletus "Biff" Gardner, chief of the county's parks and recreation department, in a statement to the County Board of Supervisors recently.

The State intends to spend \$18,717 for additional property at Moonlight Beach; \$24,200 for more land for Palomar Moun-

tain Park, and \$71,888 for the same purpose for Torrey Pines Beach.

In all, during 1960, the state plans to spend \$521,922 for land in San Diego county for parks, it was stated.

John F. Gill

Jeweler and Watchmaker
1200 Prospect at Ivanhoe

(Half-block North of
La Valencia Hotel)

La Jolla GL 4-3285
Our 10th Yr. in La Jolla

To Service You Commendably



for **GASOLINES**

CHEVRON — SUPREME — CUSTOM

for **ATLAS TIRES & BATTERIES**

and for . . .

WHEEL ALIGNMENT & BALANCING

MOTOR TUNE-UP

COMPLETE LUBRICATION

WE GIVE 2x GREEN STAMPS

MOUNT'S CHEVRON SERVICE
RANCHO SANTA FE PL 6-1866

Residences
Building Sites
Investment Properties

In Rancho Santa Fe
And Adjoining Areas

NELSON and CHAPIN

Montgomery L. Hart, Associate

PASEO DELICIAS

Dancers Squared

The Rancho Rosettes are insuring that there will be no dearth of square dancers. They are accomplishing this by sponsoring a beginner's class in this popular recreation, the group meeting every Thursday evening at 7:30 in the Old School building on the Ranch.

Kenny Young is the caller, and the classes, which started March 17, will be held for 16 weeks, at which time the "graduates" will be welcome to join the Rosettes.

The Rosettes, which belongs to the Palomar Association of Square Dancers, composed of 10 clubs in Northern San Diego County, meet each Monday, 7:30 p.m., in the Garden Club. They number about 60 members, with an average attendance of 30.

The officers are composed of couples: Mr. and Mrs. Howard Wellman, president; Mr. and Mrs. Lee Taylor, secretary; Mr. and Mrs. Kenneth Cocks, treasurer; Mr. and Mrs. Hans Amtmann, social chairman; Mr. and Mrs. Richard Blackledge, outside representatives.

Miller Drama Current Offering at Globe Theatre

Arthur Miller's drama, "A View From the Bridge" currently is providing emotional and physical violence on the stage of the Old Globe Theatre in San Diego.

Scheduled to run through April 17, with performances nightly except Monday, the play is directed by Craig Noel, with sets designed by Peggy Kellner Bruch.

Your **LOVLINESS** is OUR BUSINESS

MERLE NORMAN COSMETICS



Free Demonstrations by Appointment
Theatre Arcade
SK 5-1695
Solana Beach

Swimming Pool Supplies

**CHEMICALS — AQUA FINE PURIFIERS
LADDERS — DIVING BOARDS
HEATERS — FILTERS**

**COMPLETE IRRIGATION NEEDS
PIPE — SPRINKLERS — VALVES
PEERLESS & JACUZZI PUMPS**

WEBB PUMP & SUPPLY

ESCONDIDO

SH 5-0511

Flowers . . .

by *Adelaide*

La Jolla, California

Again

Presenting colorful and delightful Easter flowers, plants and unusual arrangements for your pleasure.

7766 GIRARD
GLencourt 4-0146

HARRY PHILLIPS
ADELAIDE PHILLIPS

JACK'S SAW FILING SHOP
KNIVES, SCISSORS, or ANYTHING THAT NEEDS A SHARPENED EDGE
ALL WORK GUARANTEED
—OPEN—
Monday thru Saturday 9-5
22 "F" St. — Encinitas
P. O. Box 355 — PL 3-5617

When you need insurance you need
HOWARD KNEEDLER
Representing *The Travelers*
Security Stability Integrity Since 1945
526 Second Street
ENCINITAS
PL 3-1186 SKyline 5-2551

Poles Rentals Divers Equipment

Ammunition Guns - Paints Hawaiian Imports
BING'S SPORTING GOODS
BAIT & TACKLE
1126 S. HIWAY 101 ENCINITAS, CALIF.
Phone PL 3-5363
Open Sundays

Wishing Well Hotel

Rancho Santa Fe, Calif.

sets the mood for



Gracious Dining
Delightful Accomodations

Reservations PL 6-1123

Lago Lindo Rd.

BLYTH & Co., Inc.

UNDERWRITERS AND DISTRIBUTORS OF SECURITIES NATIONWIDE

FOR INVESTMENT INFORMATION CALL

ZENITH 7-0064

(NO INTER-CITY CHARGE)

BANK OF AMERICA BUILDING

SAN DIEGO 1, CALIFORNIA

OFFICES IN 24 CITIES

April Datelines

Flowers, music, fashions and art highlight the mid-spring month, April. Some especially delightful events are garden-centered, the top event being the Garden Club House and Garden Tour.

- April 1—Board Meeting, Rancho Santa Fe Association**, 9 a.m., Association office.
- April 2—Annual Orchid Show**, Conference Building, Balboa Park, 10 a.m.-10 p.m. Also April 3, 10-6.
Ink Memorial Tennis Tournament, Morley Field, San Diego. Also April 3, 9 and 10.
- April 5—Civic Music Concert**, Donald Gramm, bass baritone, Russ Auditorium, San Diego, 8:30 p.m. Members.
Golden Renaissance Tour, special guided tour of Renaissance Collection of Fine Arts Gallery, 7 p.m.
- April 6—Red Cross Meeting**, Rancho Santa Fe branch, 11 a.m., home of Mrs. B. F. Jenkins.
Art Jury, Rancho Santa Fe Association, meeting, 9 a.m. Association office.
- April 7—All-Designer Fashion Show**, Theatre and Arts Foundation, Golden Door, Escondido.
- April 8—Fine Arts Gallery Lecture**, "Gravity in Art: the Projection of Subconscious Experience," by Julian Held.
- April 9—Lorita Baker Valleley Lecture**, sponsored by La Jolla unit, San Diego Women's Philharmonic Committee, La Jolla Women's Clubhouse, 3 p.m.
Great European Print Makers, Art Center in La Jolla through May 1.
- April 10—Village Church Choir**, Stainer's oratorio "Crucifixion," special service, time to be announced.
- April 12—Board meeting of Women's Council**, Village Church, Mrs. H. W. Cook, 10 a.m.
- April 14—Arts Escondido 1960**, showings from private collections presented by Showcase of the Arts, Grant School Auditorium, Escondido, noon to 10 p.m.
- April 15—Board Meeting**, Rancho Santa Fe Association, 9 a.m., Association office.
Opening Pacific Coast League Baseball Season, Padres vs Seattle, Westgate Park, games 3 & 8 p.m. Also April 16 at 2 p.m. and April 17 at 1:30 p.m.
- April 17—Easter Sunday Sunrise Service**, Mt. Soledad, La Jolla, 6 a.m.
First 1960 All-Media Membership Exhibition, Art Center, La Jolla, through May 15.
- April 20—Women's Council of the Village Church luncheon meeting**,
- April 21—Fine Arts Society Annual Dinner**, at Fine Arts Gallery, Balboa Park, 12:30 p.m. in Church School.
- April 22—La Jolla Civic Orchestra concert**, winner of Youth Artists Auditions featured soloist. Sherwood Hall, L. A. Art Center, 8 p.m.
- April 23—Rancho Santa Fe Garden Club, House and Garden Tour**, starting from Club house, 11 a.m. to 4 p.m. Sandwich plate at clubhouse. Also April 24.
American Association of University Women Annual Spring Luncheon, featuring Sam Hinton in "Our Heritage of Folk Songs," at San Diego Woman's Clubhouse.
Annual Rose Show, Balboa Park, San Diego, 2-9 p.m.; also April 24, 10 a.m. to 6 p.m.
11th Annual Viennese Ball, sponsored by Woman's Committee of San Diego Symphony Association, Hotel del Coronado. Invitational.
- April 30—Rancho Santa Fe Country Friends Day at the Races**, Caliente Turf Club.
24th Annual La Jolla Garden Tour, presented by Women of St James-by-the-Sea Episcopal Church, 11 a.m. to 3 p.m. Start at Parish House. Tea 1 to 5 p.m. at Beach and Tennis Club.

BULK RATE
U. S. POSTAGE
PAID
Rancho Santa Fe,
California
Permit No. 15

Mrs. Shirley Keeth
Rancho Santa Fe
Calif.

THE TRADIN' POST

TIEDY'S
TELEVISION & APPLIANCES
RCA COLOR TV
PHILCO—PACKARD BELL
MAYTAG
509 First St. PL 3-1977
ENCINITAS

Rancho Hardware
in the Village Center
Tools for your
Gardening
Also Barbecue Supplies
PL 6-1702

Gailey's Photo Supply
"Escondido's Most
Complete"
230 E. Grand
Phone SH 5-7823 - Escondido

MacPherson's
Men's and Women's
Quality Clothing
515 First Street
Encinitas
PL 3-1953

For any make NEW or good
used car, call **BILL APPLE.**
A & A MOTORS
QUALITY CARS
PL 3-1702
204 N. Hwy. 101 Encinitas

The Finest in Beauty Care
for the Discriminating Woman
SKYline 5-2292
**ARMOND'S
BEAUTY SALON**
ARMOND B. CARPENTER JR.
110 W. Plaza
Solana Beach, Calif.
Specialists in Hair Shaping,

Ashley's
Rancho Santa Fe Market
Watch for our Weekly
Handbills

**CULLIGAN Soft Water
SERVICE**
for BETTER LIVING
111 So. Cedros P.O. Box 278
SOLANA BEACH
Phone SK 5-1022

Announcement
Dr. Mark J. Noy, Optometrist
wishes to announce the
opening of his new and distinctly modern
office for the practice of
OPTOMETRY
1020 Second Street, Encinitas
Hours: 9 a.m. - 12 noon — 1 p.m. - 5 p.m. Phone: PL 3-1313

1997.002.057