



March 1960

# RANCHO SANTA FE BULLETIN

PUBLISHED BY THE ASSOCIATION FOR THE BENEFIT OF ITS MEMBERS

Volume 7 Number 2

# Directors Report

Increases in prepaid playing privileges and daily fees for Rancho Santa Fe golfers occupied the opening minutes of the Board of Directors meeting of the RSF Association, Feb. 19.

The increased fees, effective April 1, were adopted following recommendations made by the Golf Course committee.

Prepaid rates will be as follows: Quarterly, single, \$60 - family, \$78; semi-annually, single, \$108 - family, \$144; annually, single, \$168 - family, \$216.

Sale of prepaid privileges shall be limited to a maximum of 325 players. When this figure has been reached, a waiting list will be maintained so that applicants may take advantage of this privilege as vacancies occur.

Daily play rates will be: Daily, \$5 - Saturday, Sunday and holidays, \$7.50; after 4 p.m., week days, the rate will drop to \$2.50 week days and on Saturday, Sunday and holidays, to \$3.75.

Junior golfers will pay: Daily, \$2 - Saturday, Sunday and holi-

days, \$2, with play after 2 p.m., only.

In addition, it also was suggested that all holidays be included in the above, as well as days preceding and following holidays, at the discretion of the Golf Course Manager.

The "keeping of animals" by Earl W. Boteler was approved, as was the application of Fred Ashley for a variance on portion of lot 4, block 30.

It was decided that the Association charge the title companies the prevailing rate for reporting liens against each parcel in escrow affected by the Association records.

The application of Richard Blackledge to erect a sign on lot 1, block 3, was denied; approval was given the Standard Oil Company to erect a sign on portion of block C, map 1742.

The invoice for \$18.52 for Stanford Research Reports submitted by Raymond Gordon was approved.

The following subdivision applications were approved:

George Brent, portions of lots 5 and 6, block 36.

Mme. Mildred Reuter, portion of lot 5, block 43.

John and Louise MacFall, portion of lot 5, block 43.

Mme. Dorothy Willoughby, portion of lot 1, block 39.

Harold Cook, portion of lot 8, block 34.

## Land Deals Reported

The following real estate transfers have been recorded since the last issue of the Bulletin went to press.

Purchasers whose names appear in bold-face type are new covenant members of Rancho Santa Fe Association.

Nelda Chaldman and Ella B. Gall to **Joseph C. and Ruth T. Bray**, portion of lot 4, Anza Heights.

Maxwell G. and Winifred T.

## Roger Rowe Appointed Vice Principal at Rancho School

"Teaching and school administration are both advocacy and



ROGER ROWE  
Vice Principal

an avocation for me," said Roger Rowe, new vice principal at the Rancho School, in speaking of his work.

Rowe, who will continue with his fifth grade teaching along with his new administrative duties, likes hunting and fishing when there is time, and reading. He has been in the Naval Reserve but feels that perhaps this will have to be dropped in favor of his classroom activities.

A native of Long Beach, Rowe was reared in Kansas City, Mo., receiving his B.S. in elementary education from the University of Missouri in 1952. His next three years were spent in the Navy. On his return he taught in Kansas City while attaining his Master's degree in elementary school administration through work with the University of Kansas City and San Diego State College.

California called him in 1957, teaching one year in Coronado and then coming to the Rancho, bringing with him his wife, Jane, and children, Janet, aged 4, and Carl, 1½.

## Wencke Candidate

Rancho Santa Fe resident, Walter Wencke, has announced his candidacy for the 30th Congressional seat, running on the Democratic ticket against the incumbent, Bob Wilson, Republican.

A prominent San Diego attorney, Wencke is senior partner in the law firm of Wencke, Carlson & Kuykendall.

Burland to **Charles W. and Barbara R. Mautz**, portion of lot 4, block 29.

Edward J. and Lillian LeFevre to **Charles C. Jr., and Mildred B. Randolph**, portion of lot 4, block 47.

Charles H. and Genevieve E. Graves to **Danile W. and Lillian Mayse**, portion of lot 5, block 14.

Harold A. and Patricia P. Mosier and Wanda Axene to **Pratt Construction Company**, lot 98, map 2129.

Wood and Hill Corporation to **John M. and Anna H. Wild**, portion of lot 6, block 16.

Rancho Santa Fe  
Country Homes and Homesites  
**R. M. CLOTFELTER**

Licensed Real Estate Broker

Since 1931

PLaza 6-1422

Paseo Delicias

## ART JURY Building Approved

Before the Feb. 5 meeting convened, a public hearing was held to hear discussion or objections relative to the application of Marion M. Millar to amend local restrictions on lot 135, map 2089, from a Residence District of class A to Business and Public Use District, class D. At the meeting the petition was approved.

The Board authorized Architect Jung to secure present day building cost ratios to assist in a study concerned with minimum building cost restrictions on the Ranch.

Secretary William Smart presented gross revenue for January, 1960, as follows: Golf course — greens fees, \$5,381; playing privileges, \$4369; electric carts, 982.90; lockers, \$150; total, \$10,882.90, loss of \$229.60 under last year.

Golf shop — hand carts, \$144; electric carts, \$225; cleaning and storage, \$390; merchandise, \$2,930.18; total, \$3,689.18, a loss of \$599.30 under last year.

Restaurant and bar — \$5,782, making a grand total of \$2,354.46, a loss of \$1,536 under last year.

## Covenant Member Expresses Differing Views To RSF Board

The Board of Directors of the Rancho Santa Fe Association received the following letter and passed it on to the Bulletin for publication.

Gentlemen:

The members of the Association, though barred from the meetings, should be entitled to know when the policies and actions of the Board are questioned. Certainly they should be made aware when fundamental questions as to the purpose and effect of the Covenant are raised. The Association Bulletin is used to voice opinions favoring Board policies. It should also be available to those questioning such policies. The statement below goes, I believe, to the heart of my disagreement with Board policy and I should like to have it put before all the members of the Association, including those who don't read the Rancho Santa Fe Times, at whose request it was originally made.

"If, as I assume, the Board is acting in good faith, it does not understand the purpose and effect of the Covenant. Exercising powers not granted to it by the Covenant, it is attempting to impose new and different standards of its own choosing in disregard of those set forth in the Covenant and of rights reserved by those who created it.

This failure of understanding is fundamental. The Board assumes that it may act as does a Board of Governors of a priv-

ate club, or a Town Council: Responsive only to the wishes of those members of the Association who live here and vote. Thus, to them, it seems sufficient to say, "It is for the best interests of the Ranch." Perhaps it is, but those who in 1928 made the success of the Covenant possible by bringing their lands under it did not give carte blanche to those who might happen to be here 32 years later to impose their will as to the use and enjoyment of those lands. On the contrary, the right to determine the uses to which the lands were to be put was reserved by the owners, and each imposed his own standards of cost and size. These standards may not be changed either by the Board or the members of the Association at large, against the will of the owners.

It may surprise those more lately arrived here, but the Covenant was not intended to create an exclusive community of large estates and costly homes. Then, as now, there were those who wished it so, but of those who joined in the days when its success was not yet assured, many were of modest means and had built, or planned, modest homes. They reserved the right to build such homes. Those rights now vest in the present owners of those lands, and may not be taken away.

Those who would make over

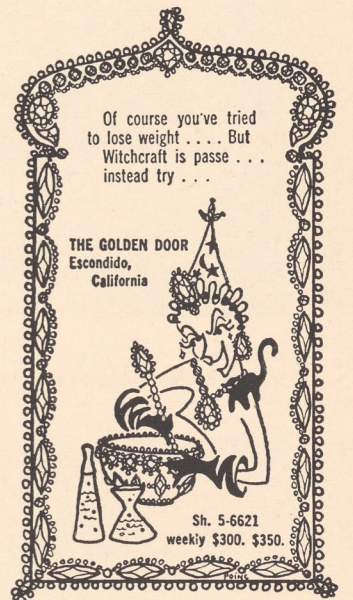
(Continued on page 16)

## Rancho P.O. Receipts Up

Postal receipts in the Rancho Santa Fe postoffice increased approximately 29 per cent in 1959 over the 1958 figure, Postmaster H. E. Strawn announces.

The new figure was \$35,262.73 compared to \$27,333.92. It was handled with no increase in man-hours.

Total postal receipts in the San Dieguito area's six post-offices amounted to \$263,484 compared to \$220,867 the previous year, a gain just under 20 per cent.



Of course you've tried to lose weight . . . But Witchcraft is passe . . . instead try . . .

THE GOLDEN DOOR  
Escondido,  
California

Sh. 5-6621  
weekly \$300. \$350.

# At your service

SAN DIEGO'S NEWEST CONTEMPORARY SHOPS  
DOMESTIC & IMPORTED FURNISHINGS  
FOR CONTEMPORARY TASTES  
NOW IN RANCHO SANTA FE  
TEMPORARY QUARTERS ON  
LA GRANADA — PL 6-1982



COMPLETE INTERIORS, DRAPERIES & CARPETING.

### RANCH IS "SHOOK UP"

Aircraft breaking the sound barrier have been rattling windows, breaking dishes, turning over flower vases and disturbing the peace in general. The Association Board has contacted the U. S. Naval Air Station in San Diego and Miramar in protest of the activity. Individuals may correspond with Admiral Hartman, 11th Naval District, San Diego. With sufficient protest some relief might be provided.

custom imports jerome d. gordon

• creative picture framing •

oriental art • carved wood • gifts • special orders

1832 S. Hill, Oceanside, California SARatoga 2-0648



DOUGHNUT FRY — Mrs. Potter Bowles, center, and Mrs. L. K. Rice, to her left, presided over the cooking of the tasty doughnuts sold at the highly successful rummage sale held Feb. 9-10 by the Garden Club.



GIFT TABLE — Mrs. Howard Steinwinter waits patiently while a group of would-be purchasers browse through the wares she had for sale at the Garden Club rummage sale.

# 'Project Pole' Alert Given Tour Planned April 23-24

A continuing project of the Beautification Committee of the Garden Club is the planting of trees to screen the unsightly power and telephone poles on the Ranch.

A year ago, the Committee sent out a letter to each member of the club concerning this problem, and since the subject matter still is pertinent, the letter is printed below, giving the names of trees appropriate for this type of planting.

Dear Garden Club Member:

Is one of your favorite views on this lovely Ranch marred by a bare and unsightly power or telephone pole? If so, we urge your aid in a concerted Garden Club effort to do something about it.

Our Beautification Committee's objective this month is Project Power Poles — a plan for natural landscape screening through the planting and proper grouping of trees around exposed power poles.

If there is a bare pole on your property, won't you join us in this worthwhile planting and screening project? Small and inexpensive young trees (1 gallon cans) started this month (planted at a minimum of 10 feet to observe Power Company's easement) will make an enduring contribution to the charm and beauty of Rancho Santa Fe.

You might make a note of any unattractive poles on your nearby road sides and we can ask County Maintenance if they would consider it for future road side tree planting schedules.

Vines are not to be used as they can create both difficult and dangerous conditions.

Looking around the Ranch with poles in mind, you will find many effective plantings to inspire you.

Below is a selected list of suitable trees available at local nurseries and recommended by the Power Company in their fine booklet "Trees."

Eucalyptus — Citradora, innocent roots, white trunk; Sideroxylon, reddish bark, red flowers; Leucoxylon, white iron bark, pink flowers; Corynocalyx, Viminilis, Lehmanni, if width is white bark, red buds, yellow available, and Erythrocorys, flowers; Fraxinus Udhei or Shamel Ash, tall Elm-like tree; Eugenia, suitable for frost-free places; and Canary Island Pine, blue-green column.

Circled in red on the calendars of Garden Club members and others who have attended in the past, are the dates of the annual House and Garden Tour sponsored by the club.

April 23-24 have been set aside for the visit to five of the Ranch's most beautiful homes and gardens, among them the famed garden of the Gifford Ewings.

Mrs. Wendell Wheelock is chairman, assisted by Mrs. H. Ray Millard as co-chairman.

Transportation again will be furnished those attending, which means the husbands of Garden Club members will be called upon to help. This enables transportation to proceed in an orderly manner, keeping cars from wandering over the countryside in search of an elusive house and the crowding of parking areas at the homes.

# Village Center Refurbished By Beautification Committee

A little refurbishing of the esplanade of the Village Center has just been completed by the Beautification Committee of the Garden Club — which every gardener has to do occasionally, says the Committee.

A number of volunteers had sprung up, hit or miss, giving a ragged, uneven appearance and detracting from the existing line of Ficifolia (flaming eucalyptus).

The volunteers have been removed and replaced with six additional Ficifolia, and a brick walk has been added at the end with a small retainer to retain the soil and to protect the planting.

Speaking editorially, we sometimes wonder if Ranchoites are cognizant of the work done by this committee to maintain and accent the beauty of the Ranch. Although scarcely a month goes by that the Bulletin does not

carry a story pertaining to the activities of this group, soon we hope to list the projects that this Committee has completed, of benefit to all who live here.

# Tram Service To Be Provided At Arboretum

Promptly at 9 a.m., March 2, Garden Club members will board a charter coach for a visit to the Los Angeles State and County Arboretum, leaving from the Garden Club.

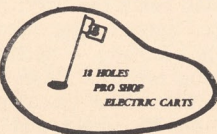
Don Wooley, chief horticulturist of the arboretum, will personally conduct the tour, which will be made by tram since the arboretum covers a large area.

A luncheon in the private dining room of Eaton's has been reserved for the party.

**Deitrich Drugs** PL 3-1943  
 (PRESCRIPTIONS)  
 COR. 1st & D. Sts. • ENCINITAS, CALIF.

Close enough for  
**ALL YOUR NEEDS**

**COLORFUL**



**CIRCLE R RANCH**  
 and GOLF RESORT

- GOLF AT ITS BEST — (Complete Facilities)
- DINING AT ITS BEST — (Complete Facilities)
- LUXURY LODGE — FINEST & INEXPENSIVE

• SPECIALTIES: Bavarian Nite, Thur. - Buffet, Sun., 4:30 on.  
 Visit the Terrace Room - Dinners Wed. thru Sun. - Cocktails daily  
 25 Min. from Rancho - on Hwy. 395 - 9 mi. N. Esc. - SH 5-8029  
 Herb Rauch, Gen. Mgr. "Moon" Mullins, P.G.A.  
 "YOU and YOUR GUEST ARE CORDIALLY INVITED"

DENMARK — NORWAY — SWEDEN — GERMANY — ENGLAND  
 SPAIN — ITALY — AFRICA — FRANCE

for the unique and unusual in gift and art objects in 1960...



DISTINCTIVE IMPORTED & DOMESTIC CREATIONS

**GIFTS... BY HODA**

JUST OPENED  
 OUR NEW SHOWROOM  
 5649 LA JOLLA BLVD,  
 La Jolla, California  
 Telephone - GL 9-2656

woodenware  
 Opaline Glass--  
 Venetian Glass--  
 WALL PIECES  
 New Crystal Originals

# Roadside Tree Planting Project By County Underway

The roadsides in the Ranch are being marked with stakes and questions are being asked as to their meaning. What is the change being contemplated? Are the roads to be widened?

We hasten to report that the stakes represent good news. The County's 1960 tree planting schedule is underway, and recommendations submitted by the Landscape Committee of the Parks and Recreation Board have been accepted.

The committee, comprised of Mrs. Arthur Thorne, president of the Garden Club, Mrs. Gifford Ewing and Mrs. William Weddell, suggested that, due to the lack of rainfall in recent years, only 122 trees be planted, concentrating them on the main roads. This will help to replace dead trees which have been removed from the roadsides, an action that is considered of primary importance by the committee, as the unsightly trees are a constant target for criticism.

### Trees Listed

Following is a list of the trees recommended by the committee and where they are to be planted. All of the trees listed are sturdy and suitable to the soil conditions of Rancho Santa Fe.

Linea del Cielo — starting at Camino Viejo and going toward

town: six eucalyptus Lehmannii in two clumps of three each; two Weeping Eucalyptus viminalis on either side pole on Linea del Cielo; 10 Hakea in clumps between poles, using varieties Laurinea and Suaveoleus; two Weeping Eucalyptus viminalis beside poles; nine Italian Stone Pine in clumps of three each between poles; four Weeping Eucalyptus viminalis for poles on either side of road; two Citriodora Eucalyptus for poles at Puerto del Sol.

### On La Granada

La Granada — Golf Club entrance to Avenida de Acacias; ten Weeping Eucalyptus viminalis beside large pole near entrance to Golf Club, beside pole on Golf Club side of road and beside pole on school side of road; also beside pole at school driveway exit and at new school parking area.

Via de Santa Fe — going toward town from Benedito driveway: 16 Citriodora Eucalyptus at the poles along the way; four California Peppers interspersed.

La Valle Plateada — near reservoir going towards Paseo Delicias: 14 Citriodora Eucalyptus at poles on El Vuelo and the right and left sides of Plateada; seven Italian Stone Pine along front of reservoir,

# Appreciation Expressed For Heart Surgery

The following letter was sent to the editor of the Bulletin with a request that it be published in order to reach as many folk as possible.

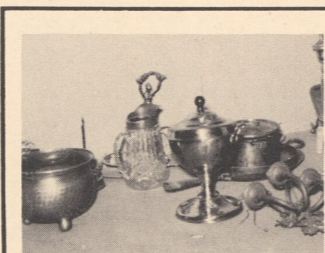
Dear Sir:

We wish to take this opportunity to express our deepest and most sincere appreciation to the many people of Rancho Santa Fe for their generous gift, the proceeds from the recent Heart Benefit Dance. My family and I, and my grandson, Joel, on whom the heart surgery was performed, also wish to acknowledge with thanks the work done by Mr. David A. Burger and his committee.

We are most happy to report that Joel is recovering remarkably well and now has a chance for a normal life.

Once again, may we thank you very much for your kindness and generosity which will always be remembered.

Most gratefully,  
Sam Kawano and Family,  
Cardiff, California



**We RE-FINISH, REPAIR  
Buff and Lacquer**

**SILVER GOLD TIN  
COPPER BRASS  
CHROME  
and other metals**

**Special Attention  
Given to Antiques**

**PACIFIC  
PLATERS**

120 Cliff Street  
Solana Beach  
SK 5-4147

Patronize the Advertisers

## Wishing Well Hotel

Rancho Santa Fe, Calif.

sets the mood for



Gracious Dining  
Delightful  
Accommodations

Reservations PL 6-1123

Lago Lindo Rd.

YOU ARE CORDIALLY INVITED  
TO VISIT THE

## Wishing Well Art Gallery

★ Featuring the Work of Local Artists

— Open every day — No admission charge  
Displays and exhibits changed frequently  
COME SOON . . . COME OFTEN!

Lago Lindo Rd. — Rancho Santa Fe — PL 6-1123

# New 2nd Grade Teacher Excels In Scholarship

Rancho Santa Fe has reason to be proud of the new second grade teacher at the Ranch School, Mrs. David Harvey.

Mrs. Harvey, or we could say Diane, was graduated in January from San Diego State College and accorded highest honors in all fields. Her grade point average was 3.75 and she did it in three years instead of the customary four!

She is listed in Who's Who in American Universities and Colleges, an honor coveted by any college person. The selection is made on the basis of grades, activities and potential for leadership and service in this country.

Diane hardly is accustomed to "Mrs. Harvey" yet since she and David have been married only two months. Also a January graduate of San Diego State, David is an engineer. They are residing in Del Mar and every opportunity available finds them off for the high mountains to indulge in their favorite pastime, skiing.

Diane is presently busy on her Master's Degree, taking night courses at San Diego State, and just to be sure she has no time for boredom, she makes most of her own clothes.



MRS. DAVID HARVEY is the new second grade teacher at the rapidly expanding Ranch School. Wonder if she can explain satisfactorily to her students as to why our country's mail rates keep going up — and up?

At least one car length behind for each ten miles of speed is a good rule to follow.

- Easter Dresses sizes 1-14
- Easter Hats
- Easter Bunnies & Lambs
- Church-going Suits for Little Boys sizes 1-8

## SMALL FRY

566 First Street  
Encinitas

## VINTAGE ROOM

Luncheon and dinner specialties — thick steaks, chops, prime ribs. and luscious salads served to 9:30 P.M. — in an early California wine cellar.

## SUNDAY EVENING BUFFET

Sumptuous buffet dinner served from 6:30 to 8:30 P.M. every Sunday night in the Garden Room. Only \$3.50.



Reservations Suggested

# THE INN AT Rancho Santa Fe

Wesley B. Hadden  
Vice President

SEE US FOR

### Carpet, Linoleum & Formica

also

### Draperies & Floor Tile

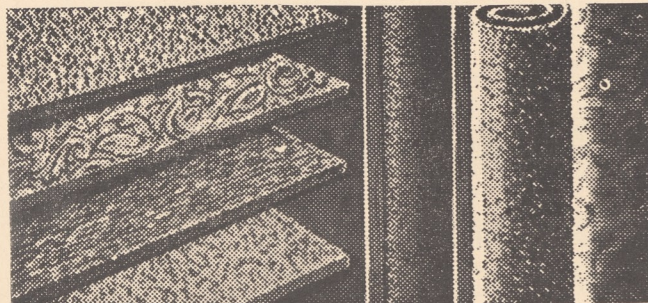
- TOP QUALITY
- BOTTOM PRICE
- BEST SERVICE

Closest Carpet Specialty Shop to Rancho Santa Fe



### Magic Carpet Co.

115 North Highway 101  
Solana Beach  
SK 5-2116



## Save ON FLOOR COVERINGS

Most Convenient  
... TO THE RANCH

### Del Mar Liquor Store

1446 Hiway 101 SK 5-1733

RANCHO POOL OWNERS—  
Can we help you ready your Pool for this season?  
Algae check? Filter check?  
New Equipment?

The VERY BEST in ALL-INCLUSIVE monthly pool maintenance.

Complete line of CHEMICALS and SUPPLIES

For YOUR personalized, LOCAL service call Michael Kirchof,

RANCHO SWIMMING POOL MAINTENANCE  
PL 6-1427 (c/o Ola Johnson Garden Service)

### Junior Ranch Riders Awarded Show Ribbons

Two hundred and twenty-seven riders completed in the all-classification, San Diego County Point Show, held Feb. 7 at the Rancho Santa Fe Riding Club ring.

Fourteen Ranch junior riders were awarded a variety of ribbons. They were:

Western equitation (9 and under): 6th, Robert Ridland, 3-gaited, (17 and under); 5th Candy Evans.

English equitation (9 and under): 2nd, Elaine Harvey; 4th Suzanne Brent.

Western equitation (10 through 12): 5th, Cathy McClure; 7th, Gretchen Ravenscroft.

English equitation (10 through 12): 4th, Kathy Sullivan; 6th, Ruth Critchlow, 8th, Eve McClwraith; 9th, Steve Harvey.

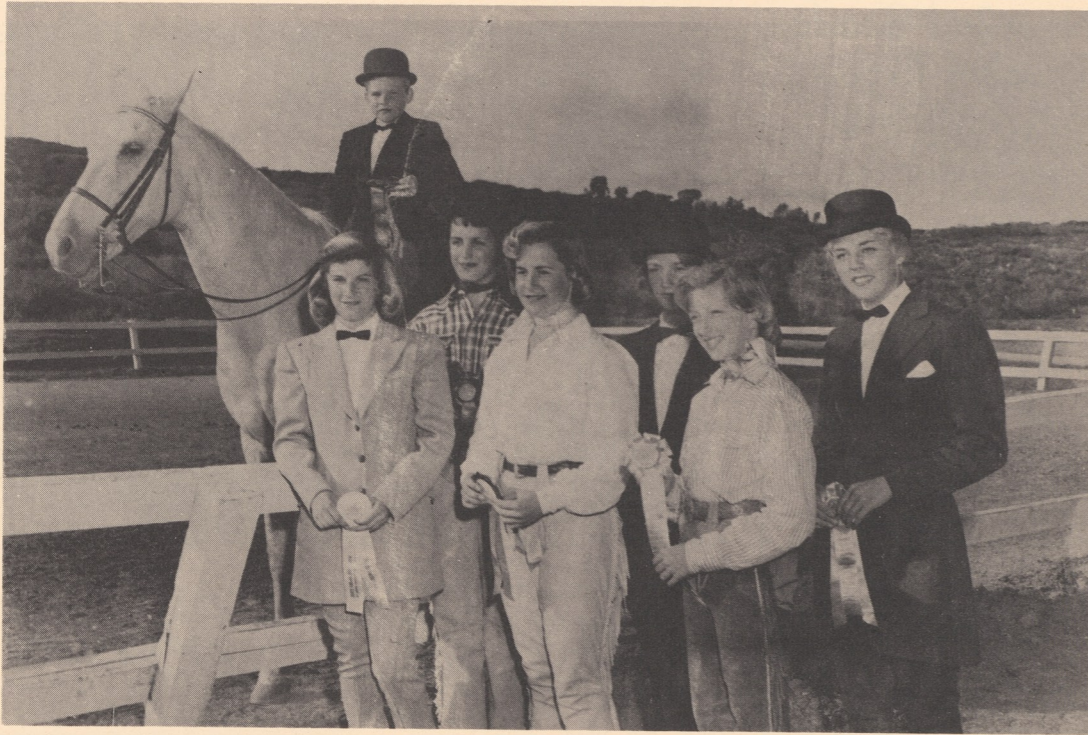
English pleasure (12 and under): 5th, Kathy Sullivan; 6th, Donna Gillam; 7th, Eve McClwraith; 9th, Ruth Critchlow; 10th, Suzanne Brent.

English non-winners (17 and under): 4th, Kathy Sullivan; 5th, Candy Evans; 7th, Ginny Cisnek; 8th, Eve McClwraith; 9th, Ruth Critchlow.

Western pleasure (12 and under): 2nd, Cathy McClure; 5th, Michelle Pratt.

Western non-winners (17 and under): 6th, Cathy McClure; 7th, Page Lloyd.

High point trophies were won by Suzanne Bew for English equitation and Carol Hauseur for western. Other winners of the 17 classes were Terry Weseloh, Nancy Achison, Fay Latson, Sally Tyson, Bob Hauseur, Debby Chase, Bonnie Danies, Judy Strong, Stevie Forsyth and George Taylor.



**RANCH WINNERS** — Winning awards at the San Diego County Point Show, Feb. 7 at the Ranch riding ring, were left to right in front, Dee Devine, Pamela Frazer, Michele Pratt; rear, Cathy McClure, Eve McClwraith, Candy Evans; on horse, Kathleen Sullivan.

### 'Matchmaker' at Globe

"The Matchmaker," a fresh expression of Thornton Wilder's love of life and human beings, is the current play at the Old Globe Theater, Balboa Park, San Diego. It is scheduled to run through March 13 nightly, except Monday, at 8:30 o'clock.

The farce takes place during the 1880's in Yonkers and New York City, telling the story of a wife-seeking wealthy merchant and "the matchmaker," who is apparently trying to find a wife for him but in reality is determined to have him for herself. Complications ensue bringing the play to a hilarious finish.

Tickets may be obtained at the Globe Theatre box office, open 9:30 a.m., to 6 p.m., and at Thearle Music Company, 640 Broadway.

HOMES ACREAGE HOMESITES

## Willis M. Allen Co.

of

### RANCHO SANTA FE

PLaza 6-1544

Poles		Ammunition
Rentals		Guns - Paints
Divers Equipment		Hawaiian Imports

### BING'S SPORTING GOODS

BAIT & TACKLE

1126 S. HIWAY 101  
ENCINITAS, CALIF.

Phone PL 3-5363

Open Sundays

## PAUL T. GALLEHER

REALTOR

### Country Squire Courtyard

Rancho Santa Fe

JOYCE GARTON — ASSOCIATE

PL 6-1180

### U.C. Film Series Scheduled At Solana Theater

The international film series presented each spring by the University of California Extension will be shown this year at the Solana Theater, Solana Beach.

The series of four films will be presented under the co-sponsorship of Scripps Institution of Oceanography, the Theater and Arts Foundation and the Oceanids, Scripps Women's organization.

The films scheduled are: "The White Sheik", a comedy by Frederico Fellini, April 5; "Ugetsu," a Japanese masterwork by Kenji Mizoguchi, April 19; "Potemkin," Sergei Eisenstein's classic silent film (1927), voted at Brussels the greatest film of all time, and "The Red Balloon," a French color fantasy, May 3; "The Seventh Seal," written and directed by Ingmar Bergman, of Sweden, May 17.

Each film will be preceded by a one-reel, silent Charlie Chaplin comedy.

Tickets, which cost 75 cents each or \$2.50 for the complete series, will be available beginning March 1 at the University Extension office, 1221 Fourth Ave., San Diego, and in the cashier's office on the Scripps campus, La Jolla.

**JOHN COLE'S**  
Book & Craft Shop

7871 Ivanhoe Ave.  
LA JOLLA, CALIFORNIA  
GLencourt 4-4766

## NORTH COAST

### STATIONERY AND SUPPLIES



FOR HOME... OFFICE

127 North Hiway 101  
Solana Beach — SK 5-4923

FREE DELIVERY TO RANCHO SANTA FE

### TREACLE and INK

By THOR SVENSON

If there are any people today qualified to speak about history's vast assemblage of intellectual and artistic leaders, certainly one of them is Bertrand Russell.

This is especially true in the field of philosophy where Lord Russell himself has been no unnoticed captain of contemporary philosophic warfare.

Like Kant, the British intellectual has never been "so much afraid of being refuted as of being misunderstood." His new and present volume is WISDOM OF THE WEST (Doubleday & Co., Publishers, 1959, 320 pp., \$9.95) and is intended to be "a historical survey of Western Philosophy in its social and political setting."

#### Differing Opinions

It has never been my opinion, and I must state this immediately, that Lord Russell has truly understood the problem of cognition as presented in epistemology and answered by Aristotle and the scholastic Thomas of Aquin. Even in this present volume, his generalizations about the school of moderate realism, seem orientated by notions of materialism and subjectivism.

But now that this has been said, I must confess that to me there is probably no-one who is a more stimulating speculator on the terrain of philosophic thought and history.

He is admirable always because he defies convention and remains the rebel with a cause. He is brave, has integrity and is

seldom without wit. What better traveling companion could he had?

#### 'Thought-Provoking'

There is a delightful word used by school administrators and lecture reviewers: it is "thought-provoking." It is such a generous and all-including adjective, that one hates to use it either for or against Lord Russell.

But indeed he is, if anyone today is "thought-provoking." This must please him for he writes at the conclusion of a foreword: "If, on perusing these pages, the reader is tempted to pursue the subject further than he might otherwise have done, the chief purpose of the book will have

been attained."  
This is not a work to be read in a day or two. It is a book to be read carefully and enjoyed.

## SIRENE'S LIQUOR

"The Friendly Store in Solana Beach north of the traffic lights"

FREE DELIVERY



to RANCHO SANTA FE  
Every Monday and Thursday  
SK 5-2112

## THE TRADIN' POST

### TIEDY'S

TELEVISION & APPLIANCES

RCA COLOR TV  
PHILCO—PACKARD BELL  
MAYTAG

509 First St. PL 3-1977  
ENCINITAS

### Rancho Hardware

in the Village Center

Tools for your Gardening

Also Barbecue Supplies

PL 6-1702

### Gailey's Photo Supply

"Escondido's Most Complete"

230 E. Grand  
Phone SH 5-7823 - Escondido

### MacPherson's

Men's and Women's Quality Clothing

515 First Street  
Encinitas  
PL 3-1953

For any make NEW or good used car, call BILL APPLE.

### A&A MOTORS

QUALITY CARS

PL 3-1702  
204 N. Hwy. 101 Encinitas

The Finest in Beauty Care for the Discriminating Woman

SKYline 5-2282

### ARMOND'S BEAUTY SALON

ARMOND B. CARPENTER JR.  
110 W. Plaza  
Solana Beach, Calif.  
Specialists in Hair Shaping.

Marvery of Solana Beach

DRESSMAKING GIFTS

209 So. Hiway 101 SK 5-4467  
VIVIAN MARSH JUNE VERY

### CULLIGAN Soft Water SERVICE

for BETTER LIVING

111 So. Cedros P.O. Box 278  
SOLANA BEACH  
Phone SK 5-1022

### Country Friends Board Visits Agencies Receiving Assistance

Board members of the Country Friends of Rancho Santa Fe have been making a series of visits to the various agencies to which the Friends have contributed throughout the year.

Purpose of the visits is to acquaint the Board with the services given by the agencies, as well as to ascertain special needs in which Country Friends may participate.

The first of the series was made on Jan. 18 to the San Diego Hearing Society and the San Diego Children's Home Association, and the second, on Feb. 15, was to the Sheltered Workshop and the Child Development Center, both in San Diego.

The third and final visit will be March 16, when the group will visit the Guadalupe Clinic and the Cross Roads Foundation, both in San Diego.

Board members include Mrs. Edmond M. Sullivan, of La Jolla, welfare coordinator in charge of the visits; Mrs. Dorothy B. Patton, president; and Meses Walter Wencke, Donald M. Cobb, Kenneth Walker, Keith Powelson, Paul Lloyd, Elliott McIntire, C. K. Whittaker, John M.

Cook, La Motte Cohu, Harry E. Wenz, Edward Havens, Harold Nigg, all of Rancho Santa Fe.

Also, Meses, Waldron J. Cheyney, of Del Mar; C. J. Wittmer, of San Diego; Robert E. Zimmerman, of La Jolla; Norman Berk, of Cardiff; Ralph W. Dusenberry, of Carlsbad; James Bixler Jr., of Vista; J. S. Jeffries, of Ramona.

Alternates include Meses. Aldon R. Frye, of Del Mar; G. E. Swezey, of La Jolla; J. W. Miller, of Carlsbad; E. Keith Reekie, of Oceanside; Jean K. Adams, of Pauma Valley; Irvin J. McCrary, of Vista; H. G. Satterthwaite, of Escondido; James D. Forward Jr., of San Diego; Peter Mitchell, of Fallbrook, and Henry Nidens, of Encinitas.

The village center recently benefited from the efforts of the Beautification Committee of the Garden Club. Several Ficifolia have been planted and a brick walk installed, as well as unkempt growth being removed.



CHURCH TEA — Mrs. Lyle Brinkerhoff serves tea to Mrs. Paul Dobson and Rev. Chester L. Tolson at the tea held Feb. 17 by the Women's Council of the Village Church. The Council's plan to sponsor an educational series on the World Service Program of the church was explained to the membership.

### Artist Series Announced

The Philharmonic Artists Association is announcing with much satisfaction its list of artists for the 1960-61 season.

Scheduled are Jerome Hines, bass with the Metropolitan Opera; Mary Costa, soprano of "Candide" fame; Gregor Piatigorski, eminent cellist, and the Los Angeles Philharmonic.

Mrs. Raymond Gordon, Rancho Santa Fe chairman, announces that tickets for the series may be obtained from her or from David Berger at Dabys.

Mrs Gordon also calls attention to the fact that the next concert of the Artists Association March 9, will feature the Los Angeles Philharmonic, with the European conductor, George Solti, on the podium. Henryk Szeryng, violinist, will be the guest artist.

The concert will be held at 8:30 p.m., in Pilgrim Hall, Escondido.

### Watch Your Weather

RANCH TEMPERATURES

DATE	Min.	Max.	DATE	Min.	Max.
Jan. 19	49	60	Jan. 31	50	62
20	51	65	Feb. 1	56	62
21	52	65	2	57	63
22	52	66	3	50	61
23	52	65	4	54	62
24	55	66	5	51	62
25	54	62	6	57	65
26	59	62	7	56	64
27	53	61	8	58	64
28	49	68	9	56	60
29	58	72	10	53	59
30	55	67	11	48	64

Residences  
Building Sites  
Investment Properties

In Rancho Santa Fe  
And Adjoining Areas

NELSON and CHAPIN

Montgomery L. Hart, Associate

PASEO DELICIAS

MacFarlane's  
EVER FRESH



CANDIES  
also — CERAMICS  
GIFTS — CARDS  
THE NOOK

"In Friendly Encinitas"  
552 FIRST ST.

OLA JOHNSON . . . and GARDEN SHOP  
and LANDSCAPE SERVICE

YOUR  
Garden

is our Business!

GARDEN SHOP  
COMPLETE NURSERY &  
GARDEN SUPPLIES

FLORAL SHOP  
CUT FLOWERS — CERAMICS  
ACCESSORIES

WE NOW GIVE *L.A.* GREEN STAMPS

WATCH for ANNOUNCEMENT  
of SALE in Local Papers.

Rancho Santa Fe • In the Village Center on La Granada • PL 6-1427

PACIFIC  
FIXIT SHOP



EXPERT LOCKSMITH

Repairs to Small  
Gas Engines

PETER TRIPOVICH

128 N. Acacia St.

SOLANA BEACH

Ph: SK 5-4141 or SK 5-4176

Only . . . a

Lacoste



wherever smart golfers gather . . .

the one and only

crocodile-crested Lacoste is king

There is no shirt on the links that can be compared to IZOD'S French import, the LACOSTE SHIRT. Made of the finest hand-washable cotton lisle with ribbed collar and cuffs, it is the only legitimate bearer of the famous crocodile crest . . . any others are imitators. In White, Red, Navy, Black, Light Blue, Beige, Grey, Brown, Coral, Yellow or Olive. Sizes: S, M, L, XL, XXL. \$8.50



Daby's  
RANCHO SANTA FE

AH! SPRING IS  
BURSTING OUT  
ALL OVER WITH



FRANAUD  
FLOWERS

by Audrey Wagner

628 First St. PL 3-2554  
ENCINITAS

FOR SALES  
AND SERVICE  
WITH  
GUARANTEED  
SATISFACTION...

100 NORTH HIGHWAY 101

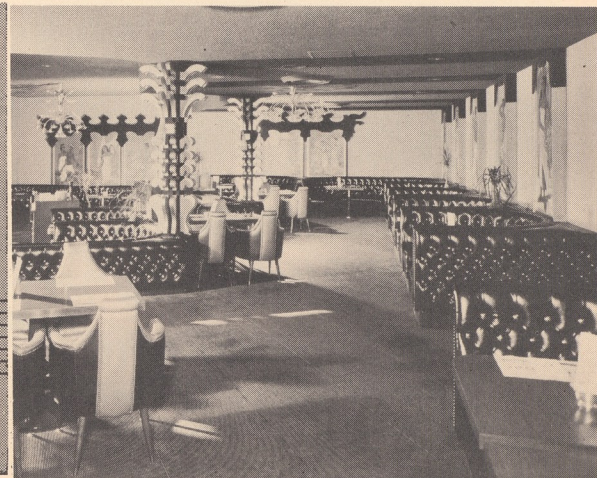


IN ENCINITAS

YOUR NEAREST FORD DEALER  
PLATEAU 3-1161

THE Catamaran MOTOR HOTEL & RESTAURANT

3999 MISSION BLVD, SAN DIEGO 8, CALIFORNIA • HUDSON 8-1081





GOLF FOURSOME — It was a good day for golf judging from the satisfied looks of these four golfers, Don Brady, Dr. Lee, Frank Unger and Tom Vogt, who are among those

taking part in the Southern California Association Team Matches now in progress. Brady is captain of the Ranch team.



CAMPING TRIP — Over the George Washington birthday weekend, a group of the Explorer Scouts enjoyed a camping trip on the Colorado River with Charles Chapin and Dr. John Bovee. Getting ready for food are, left to right standing, Chapin, Skeets Gibbs, John Bronson, Gary Valla, Kyle Starting and John Bovee; kneeling, John Lasswell and Dr. Bovee.

### Harvey Walseth President of Explorer Scouts

Harvey Walseth was elected president of the Explorer Boy Scout Troop at the February election meeting.

Serving with Harvey will be Robert Banker, treasurer; Hideo Chino, secretary, and David Bonham, activities chairman.

The new officers met with their advisors, Dr. John Bovee and Fire Chief Jim Fox to plan the March program, which will include skin diving lessons by Bob Gooding, of Cardiff.

The lessons will be held first in private pools on the ranch, and as proficiency is attained, will be moved to the ocean.

The week end of Washington's birthday, Dr. Bovee and Charles Chapin took their boats and a

party of Explorer Scouts for a camping trip on the Colorado River. Fourteen were in the group.

New Explorers are John Lasswell, Kent Gordon, Gary Vella, John Bronson and Allen Pipes.

**Ashley's**  
 Rancho Santa Fe Market  
 Watch for our Weekly Handbills.

In Quandry as to a gift?  
 Explore the . . .  
**FRED HARVEY ROCK SHOP**  
 Handmade Jewelry  
 Petrified Wood  
 1092 North Highway 101  
 Encinitas, Calif.  
 Phone PL 3-1858

## Ranch Fire Department Improvements Alter Rating

Good news for Ranchoites is that Rancho Santa Fe is now in a lower classification for fire insurance.

Word of the new grading, which moved from a 9B rating to a 6, was received in a letter addressed to Chester A. Root, chairman of the Board of Fire Commissioners from the Pacific Fire Rating Bureau of Los Angeles.

The Commission, composed of Root, Ray Griset and David Dewey, has been working in conjunction with Fire Chief Jim Fox to bring about increased efficiency in the department which has resulted in the lowered rates.

The text of the letter follows:

On February 3rd, we note that a new rate book circular was issued to authorize the application of improved fire protection classification for habitational risks in Rancho Santa Fe with an effective date of February 1, 1960. As a result of this release, our Engineering Department now is in a position to officially inform you of the details of the fire protection grading classifications resulting from our last inspection and grading of your fire district.

You will be pleased to know that the main community area centered around the business district has qualified for a National Board Grading Classification due to fairly well distributed hydrants which have creditable fire flow capacities. The new grading, made under the standard schedule of the National Board of Fire Underwriters, produced a total of 2844 deficiency

points which places this portion of your fire district, or the main community area, in National Board Class 6. This is a considerable improvement as compared to the former Rural Class III classification established in 1953. Besides water system and hydrant improvements, the recent fire department improvements both in equipment and administration were material factors in the determination of this classification.

Outside the main graded area, improvement in fire protection classifications was also obtained. Application of the Rural Grading Schedule produced a Rural Structural Class II and a Crop Class I as compared to the former 1953 classifications of Structural Class III and Crop Class II. These improvements in classifications again were due to some improvement in water supplies but primarily because of the improved fire department facilities, organization and administration. However, the limitations in water supplies, in these outlying areas, continue to limit the operations and effectiveness of the fire department which otherwise is one to be extremely proud of as it progresses in growth and improvement.

We hope this information will be of value to you and that you will not hesitate to let us know in the event of any problems or questions involving our recommendation previously sent to you or on general fire defense standards. Sincerely, John H. Colton, District Engineer.

**CHURCHILL & CASSOU HARDWARE**  
 • Dutch Boy Paints • Frigidaire Appliances  
 140 E. Grand ESCONDIDO SH 5-2441  
 Where Quality Tells and Service Sells

To Service You Commendably



for **GASOLINES**  
 CHEVRON — SUPREME — CUSTOM  
 for **ATLAS TIRES**  
 & **BATTERIES**

and for . . .

**WHEEL ALIGNMENT & BALANCING**  
**MOTOR TUNE-UP**  
**COMPLETE LUBRICATION**

WE GIVE 2-A GREEN STAMPS

**MOUNT'S CHEVRON SERVICE**  
 RANCHO SANTA FE PL 6-1866



*Traditional Countrywear*  
 for  
*Men and Women*

RANCHO SANTA FE — PLAZA 6-1996

FEATURING:—

- Dresses
- Sportswear
- Lingerie
- Accessories



SUDDENLY IT'S SPRING  
 AT THE  
**REGINA SHOPS**



- Unique Gift Imports
- Complimentary Gift Wrapping

ENCINITAS  
 594 First St.

SOLANA BEACH  
 111 S. Acacia

DEL MAR  
 1226 Highway 101

**Benbough's**  
 LA JOLLA

**Fine Furniture and Interiors**

7643 Girard Ave. — La Jolla — GL 4-0341

"Serving Southern California for over 53 Years"

# Art Jury

A heavy schedule of decisions faced members of the Art Jury at its meeting Feb. 10.

Permits issued included the following: A. C. Perry, exterior changes and color for residence, parcel 6, portion of lot 2, block 24; A. S. Hill, exterior color samples, portion of lot 7, block 34; H. H. Boschen, preliminary elevations, sheet 4, also residence on portion of lot 3, block 6; Ira L. Brown, exterior color for residence on portion of lot 6, block 24; C. L. Stutsman, addition to residence, portion of lot 9, block 48; Mme. Floy Bridges, addition to residence on portion of lot 1, block 17;

Also, Ronald H. Hampson, exterior color for residence on parcel 3, portion of lot 4, block 16; Virgil Christensen, wall on portion of lot 3, block 11; Edward A. Merrill Jr., addition to residence on portion of lot 6, block 47; Comdr. Del Young, residence, garage and pool on portion of lot 3, block 29.

Approval was given to the preliminary application of John Johnson to construct a residence on portion of lot 7, block 34; and consideration to the preliminary application of Austin and Shirley Keeth to construct a residence on portion of lot 14, block 33.

Approval was given to the following applications: Warren Wyman to construct a residence, garage and pool on portion of lot 3, block 6.

H. H. Boschen to construct residence, garage, guest house and pool on portion of lot 3, block 6, conditional upon certain changes.

C. C. Randolph Jr., to construct residence on portion of lot 4, block 47.

The Inn to construct a cottage on lot 148, map 2129; an addition to the Williams' cottage, lot 147, map 2129, and an addition to cottage, lot 147, map 2129.

## 'Special Groups' Topic for March PTA Meeting

"A Look at What the Special Interest Groups Accomplish" is the subject of the Ranch School's PTA meeting planned March 17 at the school.

Refreshments will be served at 3 p.m., followed by the discussion at 3:30.

Hostesses for the day will be Mrs. Don L. Reynertson, Mrs. Robert Smith and Mrs. William Walker.

Consideration was given to the following subdivision applications:

Harold C. Nigg of portions of lots 6 and 14, block 33.

Gilbert W. Fitzhugh, portion of lot 7, block 7.

Marvin Tackett of portions of lots 1 and 3, block 44.

George Brent of portions of lots 5 and 6, block 36.

J. Roundebush et al of lot 3, block 35.

**ESCONDIDO'S OWN, FINE  
LOCALLY PRODUCED WINE**  
Sweet and Table  
Available Exclusively at  
**FERRARA'S WINERY**  
1120 West 15th

**Copper Miss Kennels**  
Boarding & Training  
Inside Sleeping Quarters  
**Blackie & Vi Yates**  
155 Saxony Rd.  
ENCINITAS  
**PL 3-3142**

## GOING TO PARIS?

**Frenchmen Love Americans  
who can speak French!**

LEARN **FRENCH, SPANISH**

**ITALIAN, RUSSIAN, GERMAN,**  
or AT SCHOOL

**berlitz**  
SCHOOL OF LANGUAGES

For Demonstration Call  
CY 8-0490  
GL 4-4811

3320 Fourth Ave., S.D.

La Jolla Office, 1255 Cave St.

## Encinitas Pet Shop and Grooming Parlor

629 First St. - Hiway 101 - Encinitas

AMPLE PARKING IN REAR



- Grooming - Bathing
- De-Fleaing
- Pet Remedies
- Pet Supplies
- Pets — Birds
- Gold & Tropical Fish

Fresh and Frozen Nebraska Horsemeat Products.

Reservations for Grooming Desirable.

Phone PL 3-3744

**WE GIVE "J.M." GREEN STAMPS**

**JACK'S  
SAW FILING SHOP**  
KNIVES, SCISSORS, or  
ANYTHING THAT NEEDS  
A SHARPENED EDGE  
**ALL WORK GUARANTEED**  
—OPEN—

Monday thru Saturday 9-5  
22 "F" St. — Encinitas  
P. O. Box 355 — PL 3-5617

## LEUCADIA VILLAGE FORCE

- Curtain type fireplace screens made to order: Any size, any shape In 13 decorator finishes
  - Name signs to order
- 1646 N. Hiway 101 PL 3-1641

When you need insurance you need

**HOWARD KNEEDLER**  
Security

*The Travelers* Stability Integrity  
Since 1945

526 Second Street  
ENCINITAS

PL 3-1186 Skyline 5-2551

## GOOD MOVING starts with an HONEST ESTIMATE

Pick your mover for dependability — starting with an honest, dependable estimate.

All first class movers charge standard rates — the "cut rate" estimate is usually a bluff instead of a "bargain."

Before you move, get our detailed estimate, our honest description of our services. There's no cost or obligation.

## COLE MAYFLOWER

**COLE LA JOLLA TRUCK & STORAGE CO.**  
7851 Herschel GL 4-0444  
For Information or Service Please Call Collect

# Ample Water Storage Need Discussed by SFID Directors

Ample storage is going to be a necessary part of the future water supply program for San Diego county, and it might be highly feasible and advantageous for Santa Fe Irrigation district to develop a major reservoir, district directors agreed informally at their regular meeting Monday.

San Diego County Water Authority directors have discussed this phase of the problem and the possibility of making a portion of the second aqueduct bond fund available for loans to member agencies for this purpose, President Ray Badger said. He explained that about \$5 million will be left over after the aqueduct is built, and it may be earmarked for such loans though CWA directors have not reached a final decision.

Two practicable reservoir sites are now available, one in Spooks Canyon, the other in the Meadowlark Ranch vicinity, SFID directors said, but a warning was added that early action would be necessary to reserve a site before too much development occurs as a result of the Olivenhain Municipal Water district's program.

On a smaller scale, SFID directors authorized an appraisal of a tank reservoir site a short distance outside the district, on property formerly owned by the late Ed Lloyd. Negotiations with the present owners will follow

and, it was said, condemnation might be necessary.

Further discussing the state water program, President Badger said CWA was not intending to contest too strenuously the proposed increase in rates of the Metropolitan Water district. He said they would not appreciably affect SFID because of its contracts, but added that the higher rates were designed to shift the burden of MWD costs. The rate increase would be offset by reduction of the tax rate "to the vanishing point."

Actually this will benefit Los Angeles which buys little MWD water but has carried a major portion of the taxation load. However, Mr. Badger said, the San Diego county agencies are disposed to "go along" because the proposal is at least in a sense equitable, but more significantly because it will tend to overcome some of the opposition to the state water plan that has developed in the Los Angeles area, notably in relation to the stake of the Los Angeles Power and Light department.

56<sup>TH</sup> CONSECUTIVE DIVIDEND

## Investors SELECTIVE FUND, INC.

This quarterly dividend of 11¢ per share is payable on Feb. 26, to shareholders of record as of Feb. 25, 1960.

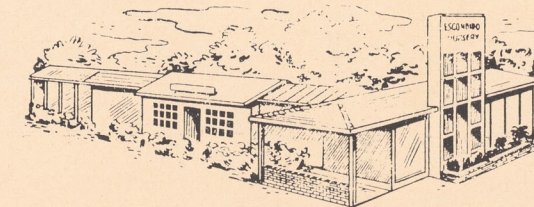
Joseph M. Fitzsimmons, Chairman

**EMMETT J. MANION**  
Zone Manager  
Rancho Santa Fe, Calif.  
PL 6-1194

*John F. Gill*  
Jeweler and Watchmaker  
1200 Prospect at Ivanhoe  
(Half-block North of La Valencia Hotel)  
La Jolla GL 4-3285  
Our 10th Yr. in La Jolla

## FULL LINE OF CHOICE PLANT MATERIAL.

- ROSES
- SHADE TREES
- FRUIT TREES
- SHRUBS and VINES
- EVERGREENS
- ANNUALS & PERENIALS
- GIFT PLANTS



## ESCONDIDO NURSERY & LANAI GIFT SHOP

STOP IN TO SEE RECENTLY OPENED ADDITION  
FEATURING: ORIENTAL IMPORTS —  
LANAI ACCESSORIES — BARBECUE SUPPLIES

**Robert F. Purvis**  
Income Tax Consultant  
Public Accountant  
Business Management

Announces the Opening of His  
New Office

Rancho Santa Fe, Calif.  
Telephone PLaza 6, 1145 Service by Appointment  
Admitted to Practice Before U. S. Treasury Dept.

## JANE BRETT, Realtor

La Granada — Rancho Santa Fe  
Plaza 6-1442

RESIDENCES — HOMESITES

INVESTMENT ACREAGE IN SAN DIEGO  
AND RIVERSIDE COUNTIES.

## BLYTH & Co., Inc.

UNDERWRITERS AND DISTRIBUTORS  
OF SECURITIES NATIONWIDE

FOR INVESTMENT INFORMATION CALL

ZENITH 7-0064

(NO INTER-CITY CHARGE)

BANK OF AMERICA BUILDING

SAN DIEGO 1, CALIFORNIA

OFFICES IN 24 CITIES

## POTTERY INSECTICIDES FERTILIZERS GARDEN SUPPLIES

MR. and MRS. R. AVERY  
Owners

800 W. GRAND AVE.  
ESCONDIDO, CALIF.

Ph. SH 5-2761

# March Datelines

1960 is well underway with the blustery month of March already top sheet on the calendar. Fashion shows are favored this month and various music and lecture series have scheduled their closing programs.

**March 1—S. D. Opera Guild Fashion Show**, Hotel del Coronado, 12 noon.

**March 4—Board Meeting**, RSF Association, 9 a.m.  
**L.A. Civic Orchestra** concert, Sherwood Hall, La Jolla, 8 p.m., Pete Nicoloff conducting, Lawrence Christian-son, French horn, soloist.

**March 6—S. D. Open Forum**, Philip Cummings on "Africa on the March," Temple Beth Israel, 8 p.m.

**March 9—Art Jury meeting**, 9 a.m., RSF Association board room.

**March 10—Metropolitan Opera Interpretation**, Richard Bonnelly, 11 a.m., House of Hospitality, San Diego.  
**L.A. Philharmonic Orchestra** concert, Russ Auditorium, 8:30 p.m.

**March 11—California Watercolor Society** exhibition, L.J. Art Center through April 10.

**March 12—Lorita Baker Vallely** lecture, L.J. Women's Clubhouse, 3 p.m.

**March 17—Ranch School PTA** meeting, 3 p.m., at school.  
**Convention Calif. Assoc. of School Psychologists and Psychometrists**, Grant Hotel, through March 19.

**March 18—4th Annual Boat, Sports and Outdoor Living show**, Belmont Park, Mission Bay, through March 27.  
**AAUW lecture, Dr. Margaret Mead** on "Trust or Treason: the 20th Century Dilemma," 8 p.m., S. D. Women's Clubhouse.  
**Board Meeting**, RSF Association, 9 a.m., Board room.

**March 22—S.D. Symphony's 4th concert**, Earl Murray conducting, 8:30 p.m., Russ Auditorium.

**March 23—John Baldessari**, one-man-show of paintings, Art Center, L.J., through April 24.

**March 24—Metropolitan Opera Interpretations**, Wolfgang Martin, 11 a.m., House of Hospitality, Balboa Park.  
**Violinist Nathan Milstein**, Civic Music, Russ Auditorium, 8:30 p.m.

**March 27—Chamber Music Concert**, 3 p.m., Fine Arts Gallery, San Diego.

**March 29—"A View From the Bridge,"** opening night, Old Globe Theatre, Balboa Park, 8:30 p.m., nightly except Monday through April 17.  
**Eleanor Roosevelt**, lecture, under sponsorship of University of Calif. at L.J., 8:30 p.m., Russ Auditorium.

**March 31—Travel Film, France**, Russ Auditorium, 8:15 p.m.

## Covenant Member . . .

(Continued from page 3)

the Ranch closer to their own heart's desires had better seek a new covenant, for the one we have will not serve their purpose. It is a MUTUAL covenant, a contract. Its continued validity and enforceability depend upon

performance. It will endure only so long as it is observed. If it does not preserve the rights of all, it will not preserve the rights of any.

Very truly yours,  
John Rule

**BULK RATE**  
U. S. POSTAGE  
**PAID**  
Rancho Santa Fe,  
California  
Permit No. 15

## Investing in STOCKS?

You can obtain the facts about Investors Stock Fund, Inc., an open-end mutual fund with professional supervision of diversified securities, emphasizing common stocks. The securities for this fund are chosen for objectives of long-term capital appreciation possibilities and reasonable income. Free prospectus-booklet with complete information from:

**Emmett J. Manion, Jr.**

Zone Manager

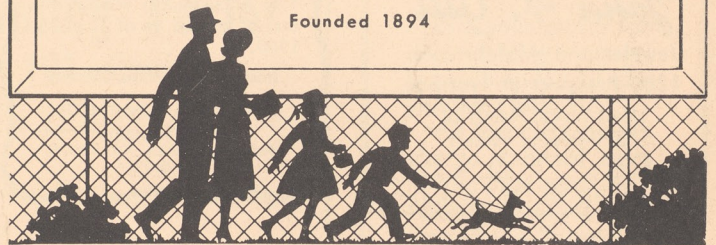
Rancho Santa Fe • Plaza 6-1194

7853 IVANHOE • LA JOLLA • GL 4-7167

*Investors*

**DIVERSIFIED SERVICES, INC.**

Founded 1894



### OR, MAIL THIS COUPON

Please send me a prospectus-booklet describing Investors Mutual, Inc.

Name \_\_\_\_\_

Address \_\_\_\_\_

City \_\_\_\_\_ Zone \_\_\_\_\_ State \_\_\_\_\_