

PUBLISHED BY THE RANCHO SANTA FE ASSOCIATION FOR THE BENEFIT OF ITS MEMBERS

Volume 3, Number 2

Rancho Santa Fe, California

February 1956

## Deputy Sheriff Pelko To Resign

A 25-year era in Ranch history, a period which included rescues of kittens stranded in tree tops, pushing stubborn cattle off the roadside, occasional arrests and finding lost children, will soon end when Deputy Sheriff Albin Pelko leaves the community.

His daytime work with the Maintenance District is scheduled to end March 1, but Pelko will remain on the Ranch at least until April 1 and probably longer.

Association directors February 17 put Pelko on the Association payroll for the month of March. He will assist two new members of the Maintenance District in caring for the 2500 trees along 25 miles of roads included in the District.

He and Mrs. Burdene Robinson, the Maintenance District secretary, will also prepare a master plan of all trees included in the District. The plan will contain suggestions for the best time to irrigate, prune, fertilize and other items connected with the maintenance work.

Mr. and Mrs. Pelko moved to this area 25 years ago from Chico, California. Pelko has served on the Sheriff's department night patrol for 19 years and has been with the Maintenance District about the same length of time.

## Assn. Approves Zoning Change For Church

A change in zoning from a residential Class A district, to Class J, was approved February 3 by Association directors. The latter classification permits the erection of churches.

The two-acre parcel is located along Paseo Delicias road in a Portion of Lot 1, Block 27, the site for a proposed Community Church in Rancho Santa Fe.

A petition had been presented to the Board signed by 16 surrounding property owners which approved of the zoning change. The 16 property owners represented the necessary two thirds required by provisions of the Covenant and also represented owners of two thirds of the surrounding acreage, also required by the Covenant.

Following the Board action, the approved petition was forwarded to the County Recorder's office. A final impediment to the establishment of the church is a similar county zoning change.

Richard C. Blackledge, spokesman for the local steering committee, said that with Association approval already granted, the county okay could surely be expected.

The church is being sponsored  
(Continued on page 3)

## Board Appropriates \$52,000 For Clubhouse Remodeling

Remodeling of the golf course clubhouse was assured Feb. 17 when Association directors appropriated \$52,009 for the construction job. Work will get underway about March 1. The building is expected to be finished within 90 days and once more ready for occupancy.

Work has already begun on a sandwich stand which will not only be used to serve food to golfers during the construction period, but will be later maintained as a permanent refreshment stand. It will be located underneath the oak trees between the 1st and 10th tees. The Board had first thought to erect a temporary sandwich stand, but changed to the permanent structure to facilitate food service, especially during the busy summer season. Cost of this sandwich shop was estimated at \$1200, also appropriated by the Board.

Temporary laboratory facilities were assured by a third Board appropriation of \$400.

All building is being done by the local construction company, Casas de Campo, Inc. John Bancroft, an interior designer drew the plans at the request of a special building committee appointed late last year by the Board to study the long-discus-

sed renovation. The committee was made up of the combined greens and house and grounds committees, and designer Bancroft.

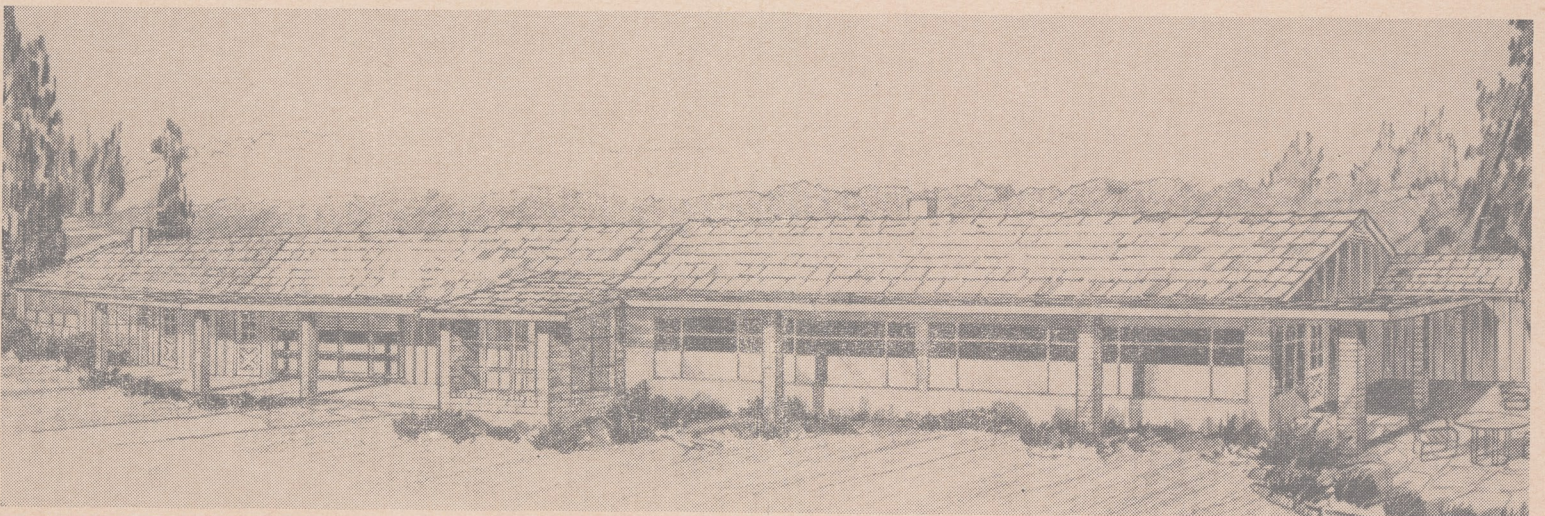
Board member C. K. Whittaker, asking the Board to approve the three-fold appropriation, said the building committee, had been advised by Howard Steinwinter, a partner in the construction company, that the actual construction might run as much as \$1600 lower than the final estimate. These savings are expected in plumbing, bar and kitchen equipment, said Whittaker, a member of the building committee.

A further economy will reflect in future insurance premiums resulting from the inclusion of an automatic sprinkler system.

The committee has been told by the Association's insurance agent that the system will save the Association \$5000 within the next five-year period.

The renovation study and the subsequent Board "go-ahead" stemmed from a county health department report, which termed the present kitchen not up to standards imposed by the county. Rather than just provide a new

(Continued on page 3)



**CLUBHOUSE REMODELING**—This is designer John Bancroft's sketch of what the clubhouse will look like on completion. Women's and men's locker room are to the left of the building. To the right of the entrance is the dining area. The plan calls for open-air dining service on warm days. The dining patio is to the far right. Renovation is expected to be finished by June 1.

## BOARD MEETING FEBRUARY 3

## Community Planning; Civic Improvements Discussed

A committee will soon be appointed by the Association Board of Directors to study long range civic planning and community needs. Appointment of the committee is resulting from discussion held on the four-acre rezoning petition denied Jan. 27, by the County Planning Commission, and from a multitude of civic improvements which the Association has requested from the county.

Association directors Feb. 3 authorized Board member William O. Fleetwood to study membership for this special committee. It is expected that he will present membership recommendations to the Board in March.

Both opponents and proponents of the recent ill-fated four-acre rezoning will be included on this committee.

The committee will also include incorporation on its study-agenda. Fleetwood commented that incorporation would undoubtedly result in a higher tax rate, but civic problems might be reduced. He said that powerful state lobbies are constantly at work striving to cut down on services granted to unincorporated areas.

Palos Verdes Estates, a community of high restrictions near Los Angeles, has recently incorporated and Board member W.M. Vandersluis suggested that the committee study methods used by the northern city to effect the change.

Board member C. K. Whittaker told the Board that John Bancroft had submitted final working drawings of the proposed clubhouse renovation to the building committee Feb. 2. He said the committee had found no changes necessary and had instructed Bancroft to proceed with calling for bids, etc.

Construction was expected to have begun between Feb. 15 and 20 after bids had been submitted.

Whittaker also said that the contract of Del Mar Caterers which has a thirty-day cancellation clause, had been revoked. During the construction period, a "hot dog stand" will be erected and manned by Associa-

tion employees. On completion, the Association will again call for catering bids, Whittaker said.

A restrictive clause recently imposed by the board on the Henry Russell subdivision was rescinded by the board on advice of its own attorney. The board had ruled late last year that the subdivision proposed by Russell would be allowed only if no new house site would be created.

In a letter to the Board, trustees for Russell asked that if any subdivision should ever be brought before the Board it should be considered on its merits alone.

Association attorney, Howard Clayton agreed, saying that to legally impose the restriction would be almost impossible.

Two requests to keep animals were approved by the Board and a third was postponed. Approved were the requests of W. R. Fawcett to keep two horses on a Portion of lots 12 and 14, block 32, and of Emmett J. Manion Jr. for three horses on a Portion of lot 6, block 27. The Board postponed action on the request of Mrs. Nell Wilks to keep two horses on a Portion of Lot 8, block 33.

The Board accepted a blanket quit claim deed for all rights of re-entry, title, interests and easements held by the Santa Fe Land Improvement Co., on covenant property. The company did, however, retain its right of re-entry to the golf course properties.

A representative of a company which had been engaged by the Wishing Well Hotel to design signs recently erected by the hotel was present at the Board meeting to answer criticisms levied by the Board against the signs. George Grey, spokesman for the sign company, said the company would endeavor to conform to specifications originally approved by the Board.

A Covenant Acceptance submitted by Arthur Banker for a portion of lot 5, block 24 was approved. The minimum cost restriction on the property is \$3000.

## County Denies Re-zoning Request

A petition to re-zone approximately 1085 acres of land in the northern part of Rancho Santa Fe into minimum building sites of four acres was unanimously denied Jan. 27 by the County Planning Commission.

A request for a continuance on the hearing was also denied by the Commission. The hearing had originally been held Oct. 27 and had been continued to the January date.

The petition was denied because of local opposition to the measure. Opponents and proponents to the proposed re-zoning were of nearly equal strength.

## Assessors Appraise Ranch Improvements

County assessors have this month been re-appraising all real estate improvements in Rancho Santa Fe. Arthur Brune, assessor in charge of the north county area said adjustments would correspond with the 20 per cent increase in assessed valuations granted the county in 1952.

## an "olde" spanish custom

"To lock the stable before the horse is stolen."

Our stock is complete with every kind of a lock—padlocks—door locks—night locks—window locks—Bring your "locking" problems to us.

## Lumber &amp; Builders Supply Co.

Solana Beach

Phone: SKYline 5-1131

## Acreage

## Residences

## Building Sites

## Investment Properties

## In Rancho Santa Fe And Adjoining Areas

## NELSON and CHAPIN

Montgomery L. Hart, Associate

PASEO DELICIAS

## BOARD MEETING: FEB. 17

## Board Approves Postal Study On Rural Free Delivery

Association directors went on record February 17 in approving a complete and early study of the feasibility of establishing Rural Free Delivery in Rancho Santa Fe.

On the strength of the Association endorsement and numerous requests for rural mail service, Postmaster Haskell Strawn said he would ask the Post Office Department to survey this area for possible delivery service.

The Board indicated that it would only approve of local service if the present post office would serve as the center of operations.

Village parking and the postal box situation could also be relieved.

The postmaster later said that after such a request is received by the Post Office Department, investigators study the local situation, get local opinion and determine the need for rural service. Any authentic opinion could be indefinite in forthcoming.

It was brought out that if the service is instigated, a competent artist could be engaged to design attractive road-side mailboxes which would also meet the approval of the post office department.

Board Member W. M. Vandersluis reported that he is waiting for a final county report on traffic congestion in the village.

The Board referred to the Art Jury two requests to keep horses. In the future, policy for keeping horses will be somewhat changed. The Art Jury will consider site, corral location, suitability of fencing, etc. With its advice in writing, similar to that needed for processing subdivisions, the actual permit request will be studied by the Board.

The two requests which are now pending are: Mrs. Nell Wilks, Portion of Lot 8, Block 33, two horses, Irvin C. Hovgaard, Portion of Lots 5 and 6, Block 24, two horses.

One subdivision was approved by the Board and another referred back to the Art Jury for further consideration. The "polo field" subdivision requested by La Jolla Investment Co., a trustee for its promoters was approved. The land is located in Lots 2 and 3, Block 36 and was divided into three parcels of four, five and 15 acres each. A change of zoning on the large parcel which will make up the polo field is pending.

Referred back to the Art Jury

was the request of Union Title Insurance and Trust Co., trustees for Edward Dobroth, to divide 10½ acres in Portion of Lots 1 and 2, Block 3, into three equal parcels of slightly more than 3½ acres.

The Board approved a "Get-Acquainted" luncheon between area builders and realtors, and the Art Jury and Association Board. Approximately 35 will attend the luncheon March 5 in The Inn's Meetin' House. Objectives of the Art Jury and Association will be pointed out at that time.

In other business, the Board: Accepted the Covenant Acceptance of Russell H. Millar, for a Portion of Lots 11 and 12, Block 32; Accepted the resignation of Ward Miller as alternate member of the Art Jury and delegated Board Member W. O. Fleetwood to find nominations for his successor; conducted other items of business reported on page one of the Bulletin.

## Real Estate Transfers

Vincent E. and Cathryn N. Williams to Harold R., Charles H. and Genevieve E. Graves, Lots 5 and 6, block 14.

Esther L. Creighton to Arnold J. Chlad, Portion of Lots 21 and 22, block 18.

J. Floyd and Mary B. Andrews to Fred Ford, Portion of Lot 58, Map 2089.

Rancho Santa Fe School District to Fred M. Manning, Lot 22 and Portions of Lots 21 and 23, Map 2129.

Henry J. Wynkoop to George M. Greene, Portion of Lot 8, Block 7, Map 1742.

Howard J. and Jane L. Barney to Pearl M. Jones, Portion of Lot 7, Block 24, Map 1742.

Richard B. and Elizabeth Ensign to Howard L. and Kathleen S. Wellman, Portion of Lot 4, Block 11, Map 1742.

John W. Hanna to Edith G. Hendrickson and Grace H. Ayres Portion of Lot 2, Block 20, Map

## January Building Tops 1955 Figure

Local building activity during January totaled \$131,880, more than doubling the construction for the same month last year.

The January figure included five Association building permits for residences, a porch addition and a garage.

## Church . . .

(Continued from page 1)

by the Church Extension Board of the Los Angeles Presbytery. Rev. George G. Culbertson, a resident of Rancho Santa Fe, has taken over as organizational minister. He is now conducting services in the clubrooms of the Garden Club.

Ranch members of the steering committee besides Blackledge, include Ray Grisette, chairman, Mrs. Chester Root, R. Victor Venberg, Mrs. William States Lee Jr., and Haskell Strawn, treasurer.

The church is also conducting choir rehearsals each Monday night in the home of Mrs. C. R. Irvine.

## Clubhouse . . . .

(Continued from page 1)

kitchen the Board authorized a complete remodeling.

When the doors to the refurbished building open, probably in early June, the clubhouse will contain new furniture, carpeting, draperies, soundproofed ceiling, an overhauled heating system, enlarged locker and shower facilities and a newly-furnished kitchen.

Both men's and women's locker rooms will be in the north part of the clubhouse; the bar and lounge will stand in the present general area of the kitchen and serving counter. The east wing will include the dining room, a kitchen and serving counter.

Sub-contracting bids for electrical work, plumbing, kitchen facilities, sprinkler system and painting, had not yet been awarded late last week.

The first unit of the redwood board and batten structure was constructed in 1929. It was designed by Miss Lilian Rice, an architect retained by the Ranch's first subdivider, the Santa Fe Land Improvement Co.

Miss Rice called her building "The Caddy House" a name which lasted for many years. The original plans are still on file in the Association office.

The original facilities (the present east wing of the building) contained a sales room, locker rooms and a dining room. Much of the dining room consisted of an open porch, later screened, then glassed-in, and finally incorporated into the present dining area.

The building has been altered, enlarged and remodeled several times in the last 20 years. The present bar, lounge and men's locker rooms have been added on; also, a small, presently unused room east of the women's locker rooms. During World War II, convalescent Navy personnel from the John Burnham home, used then by the Navy as a rest home, did a major portion of an inside remodeling job.

## Clubhouse Ignites

## After Appropriation

Fire broke out in the golf course clubhouse February 17, approximately one hour after the Board appropriated \$52,000 for its renovation. Damage was limited to the shake roof and was estimated by Fire Chief R. B. Duran at \$200.

Cause of the fire was suspected to be from sparks from a clubhouse fireplace. Prompt action by a near-by caddy who applied two fire extinguishers to the blaze, and to members of the Fire Protection District who were at the scene within seconds after the alarm was sounded, prevented extensive damage.

## Hedge To Be Planted

## Around Pipe Storage

Ornamental hedges will soon be planted around the pipe storage yards of the Santa Fe Irrigation District. District directors authorized funds for the plantings earlier this month in response to a request made in January by the Association Board.

D. M. Bakewell, District manager said the District will contact the Maintenance District to undertake the planting project. If this proves unsuccessful, landscape architects will be consulted, he said.

## SALE

BEAUTIFUL

Rancho Santa Fe Home  
California

SET IN TREES

3 Yrs. Old - Brick - Redwood

3 Bedrooms - 3 Tile Baths  
Maids Room

Recreation Room and Bath  
Large Den

Brick Patio Barbecue

Swimming Pool—Heavy Shake  
Shingles—Copper Plumbing

Large Garage with Laundry  
& Work Bench—Basement  
Storage

Walking Distance To Shops  
Inn—Center—Schools

Beamed Ceiling L. R. Ransom  
Width Pegged Oak Floors

H. Gimber Evans

Owner

P.O. Box 74, Rancho Santa Fe  
PLaza 6-1639

Day and Evening

Or Your Broker

## Information Bulletin

of the

Rancho Santa Fe Association  
Rancho Santa Fe, California

Marilyn Kamprath, Editor

Board of Directors—Adm. Felix X. Gyax, president; W. O. Fleetwood, vice president; H. F. Bakewell, W. R. Fawcett, Edmond Sullivan, W. M. Vandersluis, C. K. Whittaker; W. A. Smart manager.

INTERESTING JOBS: NO. 2

# Chief Has Colorful Career In Army, Forestry, Scouting

In a community such as Rancho Santa Fe surrounded by brush and woods, an experienced, decisive fire chief is often a great asset. In Rancho Santa Fe R. B. Duran, or Rudy as he is known to nearly everyone, has since January, 1953, held that interesting, important and not over-safe occupation.

The usual childhood fascinations for red lights, fire trucks and sirens stayed with Duran. He began chasing fires at 16 and from that time on rode the trucks as a volunteer until he joined the State Forestry service.

Duran's love of adventure comes naturally. His maternal grandfather was a Virginia physician who fought for the Confederacy with the Texans. Rodolpho was born in the Mexican copper mining town of Canaea. His father, a mining engineer, soon moved his family to the historic mining town of Tombstone, Arizona and later to Solana Beach.

Duran's first fire fighting experience was the result of a combination of circumstance and his natural attraction for fires. In Solana Beach, he was once near-by when fire and brush began to blaze, and joined the forestry crew which put out the fire. Duran was then 16.

After that he was constantly on the lookout for fires and joined the California State Forestry service as a part-time worker when he was 18.

When the near-disastrous fire of 1943 burned hundreds of acres of Ranch land, Duran was on the first forestry truck which came to the Ranch to fight the fire.

In 1944, Rudy joined the infantry. He later was transferred to that adventurous branch of the Army, the Cavalry. Assigned to the 43rd Motorized Reconnaissance Cavalry Regiment, he soon sailed for the Phillipines where he saw plenty of action.

The cavalry no longer charges the enemy knee to knee; its main function is reconnaissance duty. Cavalrymen penetrate enemy lines to locate the enemy's main body. In the Phillipines, Duran travelled with little, lonely groups of four men who stole behind as much as ten to 20 miles of the enemy's front lines.

These patrols carried no fire arms, not even pistols. Gunfire would have alerted the enemy and this would have been fatal, Duran said. Instead, these guerrillas silently stalked the jungles with daggers, heavy ironwood clubs and piano wire nooses.

A large proportion of these men of exceptional bravery and resourcefulness never returned to their lines. Sergeant Duran was lucky; he came back.

One of Duran's war trophies is a fine two handed samurai sword taken from a Japanese officer. This sword is about an inch

shorter than its original length; its point has twice been filed down, signifying that the officer had twice used it to kill an enemy.

When Sergeant Duran returned from the wars, late in 1946, he rejoined the Forestry Service, this time as a full time worker. In 1950, he joined the Camp Pendleton maintenance crew and also spent several months at Rohr as a fire inspector. In January, 1953, he was invited to become fire chief of the local Fire Protection district.

Duran said he has had many exciting experiences during his

career. However, he doesn't worry about the occupational risks and hazards until in direct contact with them.

His closest "call" came when he once attempted to put out a fire underneath the bridge which spans the Del Mar sluice near the fair grounds. Crawling underneath with hand extinguisher equipment he was nearly overcome with smoke and fumes. He tried to crawl out, but slid back in again. Finally, he was rescued by volunteers.

His most exciting fire beside the Ranch fire in 1943 was the

(Continued on page 6)

**ANNOUNCING...** A new location for the Willis M. ALLEN Co.! Visit us in the Village Center! Exclusive rental agents for the new shopping center, San Diego County's newest and most attractive shops, in the heart of Rancho Santa Fe.

*Willis M. ALLEN Company*

REAL ESTATE — INSURANCE  
MORTGAGE LOANS — RENTALS

Rancho Santa Fe PL 6-1544	La Jolla GL 4-2158
and	
La Jolla	GL 4-2111

## OLA JOHNSON LANDSCAPE SERVICE

for the most

Complete and Distinctive  
Landscaping

Design and Construction

LICENSED CONTRACTOR

Experience at Rancho Santa Fe Since 1926

Phone PLaza 6-1427

**STOP:** At the market best equipped to serve you.

**LOOK:** For hundreds of bargains in quality food products.

**LISTEN:** To comments of satisfied customers who return again and again to



**Ashley's Rancho Santa Fe Market**



**FIREMEN** from the local fire department were at the scene of the recent fire, which burned a hole in the roof of the clubhouse, within 40 seconds after the alarm was sounded. In the meantime, a caddy used two fire extinguishers to check the blaze.

# MANY MEANINGS FOR "RANCHO" Further Explanations Given For Ranch Roads and Names

Except along the Mexican border, the word "rancho" does not mean what is implied by 'ranch' in the United States.

Formerly, a ranch meant a farm, or, an area used to raise cattle. Now in the west, it generally means any kind of farm. In the Northwest, farms where apples are grown, bees are kept, and even where bull-frogs are raised, are loosely defined as ranches.

In Spanish, the word "rancho" usually means a meal served to a group of people, or a mess, as an officers' or a soldiers' mess.

Sometimes the word is used for a camp or for a small group of houses.

In our part of the country, the name Rancho Santa Fe is well-fitted to describe an area where cattle formerly roamed. It might not, however, be so understood in Spain or Argentina. There it

would probably be described as the "Hacienda" or the "Granja" de Santa Fe.

The following words have been used to describe the different roads at Rancho Santa Fe: Paseo, Via, Linea, Calle, Rambla, Camino Calzada, etc.

The literal Spanish meaning of these road-terms are Paseo, walk, or sometimes a boulevard; Via, way or road; Linea, usually a straight road; Calle, a street, usually in a town or village; Calzada, a paved road, or literally, a road with a shoe sole; Rambla, raised road or embankment; Camino, path, often applied to a highway, as "Camino Real" or royal highway.

In many cases, Rancho Santa Fe road terms are omitted on the road signs.

We have, for instance; Mirador, meaning watch tower, implying a wide sweep or view; Tordo, dappled horse or thrush;

Lago Lindo, pretty lake; La Flecha, the arrow; Mimulus, monkey bush (road); Cordoniz, quail road, etc.

The Spanish word "Pintor" means painter. Therefore, Paseo Pintoresco becomes "Picturesque Lane".

## Rancho Santa Fe Temperatures

Following is a partial listing of recent Rancho Santa Fe temperatures as recorded at The Inn. The list is incomplete because the gauge went out of order.

	High	Low
January 16	60	54
January 17	62	50
January 18	65	51
January 19	60	52
January 20	60	57
January 21	62	59
January 23	59	56
January 24	62	58
January 25	59	54
January 26	61	59
January 27	61	59
January 28	60	56
January 29	60	51
January 30	63	51
January 31	59	54
February 1	61	51
February 5	58	51

## Mothers' March Nets \$612

Sixteen volunteers collected 612 dollars January 31 in the annual Mother's March on polio. Mrs. John MacFall, chairman of the local drive said that Rancho Santa Fe responded with higher per capita contributions than any other near-by community. Encinitas-Leucadia was next with \$519.

Rancho Santa Fe members of the San Dieguito High school Girl's League also conducted a balloon sale Jan. 28 and Feb. 4. The girls collected \$63.06 for the drives. Participating in the local sale were Vicki Millar, chairman, Mary Lou MacFall, Mayo Lewis and Bobbie Mac Fall.

## January Golf Income Up \$1509

Gross January golf course income was \$7866.50, according to W. A. Smart, Association manager. This figure, representing both greens fees and pro-rated playing privileges, was \$1509 over the January 1954 figure.

Final figures for February are not yet tabulated late last week, but Manager Smart said the monthly income was also above the preceding year's.

## NOW IS THE TIME TO REVIEW YOUR SECURITY HOLDINGS

The changing world and national picture has altered the income and capital appreciation prospects for many securities.

Have you examined your holdings recently?

May we suggest that you allow E. F. Hutton & Company's Investors' Service Department to review your portfolio? Simply complete and forward the attached coupon requesting a copy of

the "Confidential Investment Inventory" to us. We will carefully evaluate your holdings in the light of present business conditions... without obligation, of course.

This is but one of Hutton's many services to investors. We invite you to visit our San Diego office and inspect our facilities, including our large electric quotation board.

## E. F. HUTTON & COMPANY



MEMBERS NEW YORK STOCK EXCHANGE AND OTHER LEADING SECURITY AND COMMODITY EXCHANGES

1066 Fourth Avenue, San Diego • BELmont 2-3101  
FROM RANCHO SANTA FE Call ZENith 2310

Los Angeles, New York, San Francisco, Chicago, Dallas, Kansas City

Hear "Business News" KMPC 8:15 A.M. Mon.-Sat.

**E. F. HUTTON & COMPANY**  
1066 Fourth Avenue, San Diego

Please send me a copy of your "Confidential Investment Inventory."

NAME \_\_\_\_\_

STREET \_\_\_\_\_

CITY \_\_\_\_\_

PARKING, SIGNS, STRIPING

# County Studies Improvement Requests; Replies Made

The county of San Diego has recently been besieged with requests for civic improvements in Rancho Santa Fe.

Requests have included parking surveys, additional stop signs broader interpretations of Maintenance District powers, spelling corrections of several road signs and additional road-striping.

In a letter to the Association, Paul Fowler, county traffic engineer, said his department is contemplating a parking survey in the business area to determine the parking demand and vehicle turnover.

Fowler also said that policing the village center streets would be impossible. The county had been requested to install limited parking signs to facilitate ever-increasing traffic movement in the village.

The county report stated that only through a Protection district or a community services district could necessary traffic enforcement be provided. Even at that, no fines collected could be used to defray operating cost of the district, the report indicated. Fowler urged village parkers to refrain from diagonal parking in the village, especially along Avenida de Acacias.

A request for stop signs at the intersection of La Granada and Avenida de Acacias by the P-TA and the Association was granted by the county. Additional stop sign requests are still pending.

An amendment to the county ordinance governing the Maintenance district is now in the hands of the County Counsel. The change will allow district employees to clean and maintain the village center streets and gutters.

In another letter, the county stated that several errors in street spellings had been noted and that the next order of street name signs would include corrected replacements for these signs. Fowler said he thought this would be within the next three or four months.

Fowler also stated that extensive traffic volume surveys have been made on the Ranch to determine the necessity of additional striping of secondary Ranch roads.

Road striping on secondary thoroughfares must have "extraordinary" justification warranted by traffic volume in excess of 1000 vehicles a day, frequent hazardous vertical curvature, and hazardous roadway conditions in extreme fog areas where fog conditions are the rule

rather than the exception, Fowler's letter read.

He said that traffic counters had been placed on 11 Ranch roads and that nowhere was the traffic volume in excess of 615 vehicles per day.

He said that direct contributions by abutting property owners to defray the cost of road-striping which did not justify expenditure of public funds was generally unworkable, difficult to administer, and generally ineffective following the initial application.

On Feb. 3, Major M. J. Hopkins, a former army engineer, presented a report to the Association Board of Directors in which he urged the board to recommend to the county that diagonal parking be allowed on Via de Santa Fe next to the local food market.

## District Questions City Water Policy

Two water controversies between the city of San Diego and the Santa Fe and San Dieguito Irrigation Districts may be settled amicably, according to D. M. Bakewell, manager of the local district.

For the past year the two districts have been questioning the right of San Diego to declare a water shortage in Lake Hodges while diverting water from the Sutherland Dam upstream to San Vicente reservoir.

In drought years, San Diego cuts local supplies by 25 per cent. In the case of the Santa Fe district this amounts to a near 900-acre feet cut in the 4300 acre feet annual entitlement.

Bakewell said the district is also holding up payment of nearly \$26,000 in water charges imposed by the city. He said San Diego has billed the district for storage, evaporation and seepage of water which the district receives as its share as a member agency in the County Water Authority.

The district contends that the CWA water is completely separate from its entitlement and that it should therefore pay only transportation charges for bringing the water into the district system, the manager said.

Success is never final and failure never fatal, it's courage that counts.

## Fire Chief...

(Continued from page 4)

huge fire of 1949 which burned thousands of acres in De Luz Canyon near Fallbrook and even extended into Orange and Riverside counties. It was 20 days before mopping-up operations were finished.

The current year has been fire-less in Rancho Santa Fe but last year Duran, his assistant, Dick Wessels, and volunteer crews from the Fire Protection district extinguished 18 fires.

Duran has also served as scout-

master of Troop 716 since its inception in September, 1953. Busy with the demolition job at the fire station lately, he hasn't had as much time to devote to the scouting program as he would like to. He gives much credit to the success of the scout program to the assistant Scoutmaster, Paul Roberts. William Herbert and Richard Blackledge have also served as assistant Scoutmasters in the past.

Synonym: the word you use when you can't spell the other one.

# The Country Squire

COURTYARD OF SHOPS

- CASUAL CORNER DRESS SHOP
- SUGAR PLUM TREE — CANDY, BOOKS
- COUNTRY SQUIRE TEAROOM
- COUNTRY MAID — HAIRDRESSER
- COUNTRY FRIENDS — TRADERS SHOP
- COUNTRY SQUIRE GIFTS

## JOSEPH L. KLATT, Inc.

La Jolla's Custom Builder

Takes Pride in Announcing  
An expansion program  
To include beautiful

## RANCHO SANTA FE

Suite 11 7644 Girard Ave. GL 4-5354

## Rancho Santa Fe

Country Homes and Homesites

## R. M. CLOTFELTER

Licensed Real Estate Broker

Since 1931

PLaza 6-1422

## 74 MERIT BADGES EARNED

# Boy Scout Troop 716 Has 3 Eagle Scouts; All Brothers

The Rancho Santa Fe Boy Scout troop 716, three years old last month, has three Eagle Scouts. Two of them earned their awards through work in the local troop, an unusual distinction for a young scouting group. But the honor is further heightened by the fact that all three Eagles are brothers.

Juergen, Dieter and Gunter Amtmann, sons of Mr. and Mrs. Hans Amtmann of Paseo Delicias road, have amassed a total of 74 merit badges among themselves.

Born in Germany, the three scouts their parents and a younger sister, Sylvia, 12, have lived in this country since 1948. For four years, they lived in Dayton, Ohio, where both Juergen and Gunter became interested in the scouting program. Juergen, now an engineering student at UCLA earned his first Eagle award there. Since that time he has earned a bronze palm, awarded for five additional merit badges, over and above Eagle requirements.

On Feb. 11, Gunter, 17, a San Dieguito High school junior, also received the bronze palm, and fourteen year old Dieter was honored with his first Eagle award.

Other members of Troop 716 also received awards at the Court of Honor. John MacFall was awarded second class Scout rank. Richard George received both Star and Life awards. Young George and Gunter were also presented with several merit badges.

To get an Eagle award is no simple thing. Boys can join the scouts as tenderfoots at the age of 11, or by automatic transfer from the Cub Scouts. The youngsters are first taught scouting laws, the scout pledge, first aid, simple cooking, woodwork, signaling, swimming and other basic Scout skills.

"Scouts are taught just a little bit of everything at first," the Amtmann boys said recently. Starting as tenderfoots, the youngsters advance to second and first class status.

After that, interested scouts begin systematically piling up enough merit badges to achieve Star, Life and finally the Eagle awards. For Star status, a scout must earn five merit badges; Life scouts must earn 11. And for Eagles, the number jumps to 21, of which 15 are required.

About 111 classifications are

available to scouts working on their merit badges.

The Amtmann boys have earned merit badges in hiking, wood-carving, nature study, citizenship in the community, forestry, swimming, camping, life saving, public health, personal fitness and many other things.

Although the time element is not exactly specified, each merit badge actually requires quite a prodigious amount of work. Juergen once earned a bird watching badge for knowing and listing a minimum of 50 different birds. He said his bird-watching was spread out over a period of several years.

Again, the forestry merit badge requires the Scout to plant 100 young trees in a place where soil conservation is desirable. Dieter, enthusiastic about this phase of the program, said, "Actually, anyone can get trees from the Forestry Service for good conservation purposes."

To get the hiking badge, the boys, accompanied by their father, hiked through Spooks Canyon to Escondido and back. On the way home, the quartet encountered a rattlesnake sunning itself on a rock. Gunter killed this one with a well-aimed rock. Later they saw another, but this time the reptile escaped into a pile of rocks.

The Amtmann boys are Explorers, a troop patrol for which any scout is eligible when he is 14. Bob Francisco acts as advisor for this group and functions as its scoutmaster.

Several other explorers have earned five merit badges and have thus qualified for Star Scout status. They are Christopher Renn, John Rice, Bob Francisco Jr., and George Ennis.

The troop is now on the lookout for fathers to serve on the scout committee. They said that fathers would only have to attend the meetings once each month. Scouts currently meet weekly on Monday nights at the fire house.

Troop 716 has camped at Yosemite, Cuyamaca, Palm Springs, Idylwild and Borrego desert. A survivor's hike is now under discussion by the troop. On such a hike, scouts would carry nothing but a pocket knife. Enthusiastic about this, the Amtmann boys said that survival would be quite easy. Boiled grass and edible berries, mushrooms, sprouts and roots were suggested as a possible diet.



THE EAGLE AWARD—Scouting's highest honor, the Eagle, was awarded to Dieter Amtmann, a member of Scout Troop 716, February 11, in a District-wide Court of Honor held in San Dieguito High school auditorium, Encinitas. Shown awarding the honor to her fourteen-year old son is Mrs. Hans Amtmann, while Mr. Amtmann looks on. A total of 21 merit badges must be earned by Scouts before the Eagle status is achieved.

Photo by Nick Gulling

For Reinvesting

Available Capital

## 24 REPLACEMENT STOCKS

The Eighth Issue of our "Moderate Priced Reinvestment Suggestions" lists 24 stocks in the \$8 - \$25 range which, in our opinion, are outstanding opportunities to replace stocks sold for tax purposes. The list gives you basic investment information, including earnings, dividends, price range, and yields, plus a short comment on each issue explaining why we feel the stock has important capital gains promise.

This list tells you about stocks you might not hear of elsewhere. Our choice includes such unusual situations as Tracerlab and South American Gold and Platinum.

Write for your free copy of our Eighth Annual "Moderate Priced Reinvestment Suggestions."

## SHEARSON, HAMMILL & CO.

Founded in 1902  
Members New York Stock Exchange  
and other Leading Stock and  
Commodity Exchanges  
7863 Ivanhoe Avenue  
La Jolla  
Phones: Call toll-free Zenith 4264  
or Glencourt 4-4264  
Offices in all principal cities

Organization  
Experience  
Research  
Imagination

Lester R. Walls,  
Shearson-Hammill & Co.  
7863 Ivanhoe Ave., La Jolla, Calif.

Gentlemen: Please send me without obligation  
your Report NT-9.

Name .....  
Address .....

## E. H. Frazer Is Riding Club President

E. H. Frazer succeeded Mrs. Potter Bowles as president of the Rancho Riding club when the club met Jan. 23 for its annual meeting.

Mrs. Bowles was elected vice president of the club. Other 1956 officers are Mrs. Edward D. Havens, secretary and Mrs. C. R. Irvine, treasurer.

Elected to the Board of Directors were John S. Robertson, Arthur Banker, William Fleetwood, John Rice, Mrs. Emmet J. Manion and Mrs. A. E. C. Oxley.

The new board met at the Frazer home for its first meeting Feb. 7 to select and re-elect committee members for the year. Mrs. Bowles will once more handle the trails work for the club. Other committee chairmen are social, Mrs. Irvine; rides, Mrs. Manion, building and grounds, Mr. Robertson.

Appointed to the 1956 horse show committee were Robertson, Mrs. Harry W. Booth Jr., Mrs. Warren R. Devine and Mrs. Howard Clinton. On the committee which will clean up construction details on the new stables are John Rice, R. G. Medlicott, Harry W. Booth Jr., and Fleetwood.

Frazer said that Bob Rice, the trainer and caretaker engaged by the Riding club for its new stables, will move into his quarters March 1. Announcement will be made later on teaching, training and boarding horses.

The new president has lived on the Ranch since January, 1953. The Frazers live on El Sicoromo road on a large acreage where they raise thoroughbred horses. The Frazers have two daughters, Linda, 18, and Pamela, 12. Both girls have appeared in horse show competition, Linda in hunter and jumper classes and Pamela in western classes.

Frazer said recently that one of his horses, a two-year old filly will soon be ready for training in preparation for the racing circuit.

## Rummage Sale Called Successful

A report will be made March 6 on the financial success of the Garden club rummage sale, held Feb. 14 and 15.

Mrs. Edmond Sullivan, president of the Garden club, said the rummage sale was the largest and most successful ever conducted.

She credited this to the Garden Club's expanded facilities and the resultant increased display space. Mrs. Fred Van Sicklen was general chairman of the sale.

## Arts and Crafts Show Slated

In an effort to encourage artistic endeavors and displays, the Garden club is this year initiating the first in a planned series of annual arts and craft shows. The two-day show will be held March 13 and 14 at the Garden club. Mrs. La Motte Cohu and E. Harrison Powell are co-chairmen of the event.

Earlier this month, circulars were sent to every home on the Ranch urging local people to display their work at the show. The art work will not be judged, but some of the work will be for sale, Mrs. Cohu said.

Anything that can be broadly classified as arts and crafts will be accepted for display. Classifications include paintings in oil, watercolor, or pastel, decorative drawings, sculpture, wood-carvings, etchings, pen and ink sketches, photography, ceramics, mechanical and artistic models, jewelry, weaving, leatherwork and needlework.

Exhibitors are asked to bring their work to the Garden club from March 10 to March 12 from 2 to 4 p. m. Mrs. Cohu, Mr. Powell and members of their committee have announced that they will make special appointments for persons unable to come during those hours.

Assisting the co-chairmen will be Mr. and Mrs. A. C. Perry, Mrs. Alwin Trepte, Mrs. Richard C. Harris and Mrs. William States Lee Jr.

## Los Ancianos To Elect Jefe

Los Ancianos will elect a Jefe (chief) and directors to their organization when they meet March 1 in the Meetin' House for their annual meeting.

A slate of nominations has been prepared under the chairmanship of Albert F. Hunt. The cocktail hour begins at 6:30 p. m. with dinner following one hour later, according to the present Jefe, R. B. Fisher.

Following the dinner, and election of directors, an accordionist will lead the group in community singing. Reservations can be made with W. A. Smart, the Jefe said.

Boy Scout Troop 716 recently received a \$50 check from Los Ancianos, the troop's sponsor, as the annual contribution toward maintaining the troop. Victor Rakowsky serves as institutional representative.

There is nothing so strong and safe in any emergency in life as the simple truth.

## Flower Show Theme Is "Holiday Tours"

"Holiday Tours" will be the chosen theme for the Garden club's annual flower show, April 28 and 29.

To the continent—to the Islands—to the Orient—to the British Isles—Across the Border—Caribbean Cruise—Pacific Highways, and Arizona Highways will be included among various classes for judging.

Mrs. P. W. Pichel has been named flower show chairman. She will be assisted by Mrs. Sydney Nelson and Mrs. Charles Ames. School exhibit chairman will be Mrs. Neil Randol.

## Book Club to Meet February 28

The Rancho Santa Fe Book club will meet Tuesday, Feb. 28 at 12:30 p. m. for its monthly meeting.

The luncheon and business meeting will be held in the home of Mrs. W. R. Fawcett. Hostesses who will assist Mrs. Fawcett are Mrs. Lillian Foster and Mrs. Thomas R. Cummins.

Two book reviews will be presented by Mrs. Fred Lewis and Mrs. R. Victor Venberg.

## Annual Fashion Show and Tea Slated By P-TA

The Ides of March will usher in Rancho Santa Fe's second annual P-TA fashion show and tea to be held in the Meetin' House of The Inn, March 15 at 2 p. m.

Spring fashions from La Jolla, Del Mar and Rancho Santa Fe shops will be modeled by Mrs. Richard A. McClure, Mrs. E. Ralph Hanks, Mrs. Robert Patnaude, Mrs. Harry W. Booth Jr. Mrs. Roger Ketron, Mrs. Howard Barney, Mrs. Richard Pharr, and Mrs. Thomas Faulconer. Mrs. R. G. Medlicott is chairman in charge of models.

Small fry fashions will also be modeled by a boy and girl from each class at the local school. Mrs. Kenneth Walker is commentator. Door prizes will be contributed by the participating shops.

The fashion show is one of the yearly major fund raising events of the P-TA. Tea refreshments and use of the Meetin' House have been donated by Mr. and Mrs. George Richardson. Reservations and tickets may be made by calling Mrs. Nell Wilkes, PL 6-1502, or Mrs. W. D. Tunstall, PL6-1073.

## WILLIAMS & MACPHERSON SUBTROPICAL NURSERY

### INDIVIDUAL LANDSCAPING

955 Highway 101, Encinitas

PLateau 3-1555

## Painting & Decorating Contractor

"Particular Work for Particular People"

We will work with you or your Interior Decorator  
Neat and Courteous Workmen,  
with highest references available

## T. D. Appelford

Day  
PALace 4-1233

Evening  
RAndolph 8-7861

## Carp Program Called Successful

Officials believe that the recent carp-eradication program conducted at Lake Hodges was successful. D. M. Bakewell, manager of the Santa Fe Irrigation district said last week.

Seventy tons of fish were removed from the lake after San Diego city water department workers applied rotenone—a fish-killing chemical.

Rotenone was used to kill the carp which muddy the lake, eat the bass spawn and compete with small fish for available food and insects in the bottom mud. Water officials hope that the water-quality will improve because of the operation. Both the San Diego and Santa Fe Irrigation districts derive their water supplies from Hodges.

The fish were recovered by a Los Angeles fertilizer company soon after they rose to the surface. Some bass, crappie and catfish were also found floating on the top of the lake.

Bakewell said that tests are being conducted daily to determine how quickly the rotenone dissipates. He said the conduit will again be turned on only after city and county health departments give their okay.

Officials won't know until spring whether all the carp were killed and the real success will be judged by fishing two years from now. The State Fish and Game Commission plans to re-stock the lake with game fish, Bakewell said.

## San Diego Annexes San Dieguito Site

Rancho Santa Fe now contains nearly eight acres of property recently annexed to the city of San Diego. The land involved is the San Dieguito reservoir site. Annexation of it and five other city-owned dams was approved early in February by the County Board of Supervisors.

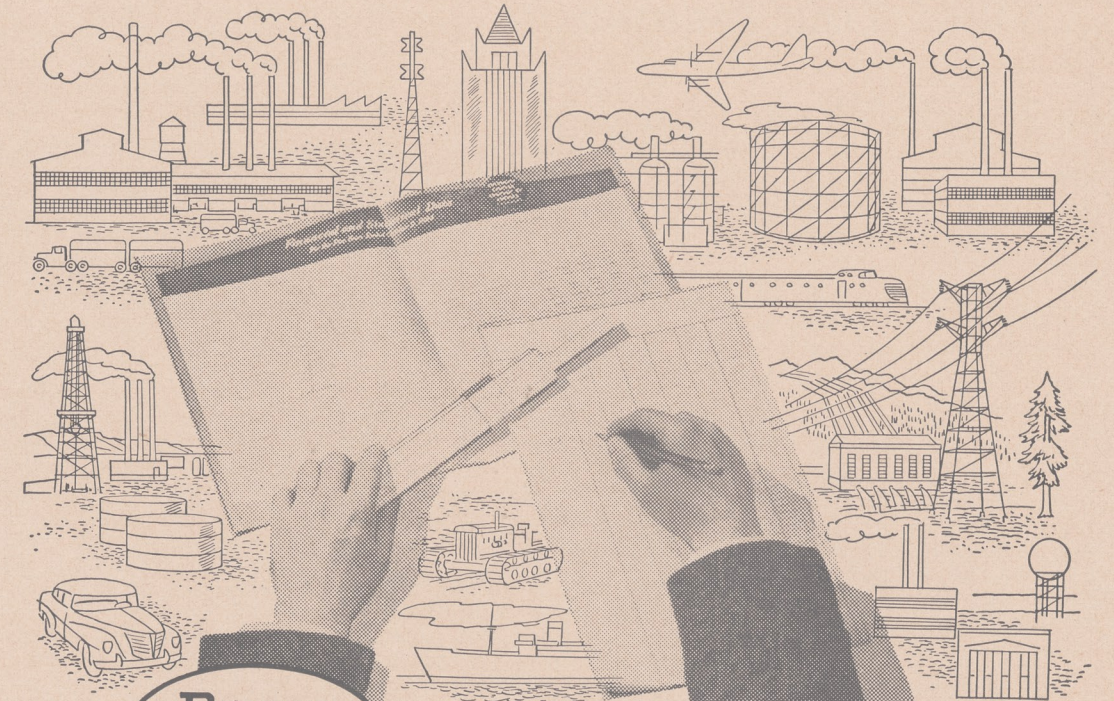
The properties, now removed from the county tax rolls, will cost the county and several school districts about \$25,000 in revenue during the next fiscal year.

The island-annexations were possible under a new state law which permits a city to annex up to 100 non-contiguous acres of municipally-owned land.

The city also annexed the Lake Hodges dam site, just north of the Ranch.

## Wanted . . . .

Reliable person to work fenced-in garden on shares. I would provide water for irrigation, and fertilizer. Bishop Mitchell, Telephone PLaza 6-1586.



DEAN  
WITTER  
& Co.

Research

helps improve your investment results

### Dean Witter's Research Dept. — one of the largest in the U. S.

Issued studies on over 900 different securities in 1954

Maintains library containing over 165 different reference sources

Made approximately 770 Portfolio Analyses in 1954

\*Annually publishes 26 issues of "Review & Analysis," containing timely investment topics

Has ready access to information on approximately 4000 securities

Over 30 years experience in serving industry and investors

It costs no more (in fact there's no charge to you) for the more comprehensive research service of Dean Witter & Co.

\*To acquaint you with one phase of this service, we'll be glad to send you a copy of our fortnightly Review and Analysis. Just write or call. Address your inquiry to our Research Department.

## DEAN WITTER & Co. Investment Securities

Members: New York Stock Exchange • Los Angeles Stock Exchange

926 FIRST NATIONAL BUILDING • SAN DIEGO, CALIFORNIA

Telephone BELmont 9-8151

Los Angeles San Francisco Seattle Portland New York Chicago

28 offices serving investors

# "Meet Your Neighbors" The William Herberts

Los Arboles road is dotted on both sides with many pleasant Ranch style homes, but when Mr. and Mrs. William Herbert purchased their three-acre home site just a few years ago, there were only three houses along the eucalyptus-lined street.

The Herberts and their three sons moved into their home in May, 1954. It's not likely that Richard, 8, David, 4, and John, 18 months, will ever be lonesome for playmates, for by the latest unofficial count, there are at least 24 young boys living along the same street.

Like so many other young families who have recently moved to the Ranch, the Herberts were looking for a place where they could live, breathe and enjoy the country atmosphere offered here, as against the sardine-packed tightness of city dwelling.

Their redwood board and batten home contains a living room, dining room, three bedrooms, two baths and a den. In the lat-

ter, a pleasant paneled room, in the center of, but in effect, cut off from the rest of the house, the children and their friends are able to watch their favorite television programs without disturbing their parents and their visitors.

A magnificent fireplace of native sandstone, quarried near the Ranch, makes up almost one entire wall of the cedar-paneled living room. This fireplace headed all priorities for the Herberts' Ranch home.

The ground in the front of the house is covered with rich green lawn, different from the profusion of flowers, so common to the north county area.

In the back, a brick patio extends from one end of the house to the other, It was built by Mr. Herbert, who is now spending spare time by constructing an enclosing concrete block fence.

William and Betty Herbert first met at a military ball at Brown Military Academy, in San

Diego, one of Mr. Herbert's alma maters. They were both 15 years old. Mr. Herbert is the son of a San Diego banker and after attending San Diego schools eventually graduated from Brown Military Academy.

Mrs. Herbert, who comes from a career-Navy family, was born in Newport News, Virginia. She attended junior high and high school in San Diego, Pasadena Junior College and later Santa Barbara College, before it was integrated into the University of California.

The Herberts were married during World War II, when Mr. Herbert served with the paratroopers. When the war ended, they moved to the east coast where Bill Herbert attended college in Washington, D.C. before graduating from Columbia University in New York City.

Mr. Herbert studied engineering at Columbia and is now actively engaged in research as an electronics scientist at Naval Electronics Laboratory on Point Loma. The drive to and from the lab takes between a half hour and an hour, but advantages of country living well outweigh the traffic battle.

Mr. Herbert also rides a great deal and the family now has its eye on some near-by property which would make an ideal coral site.

Mrs. Herbert prefers dogs. Penny, a Boxer which she owned for eight years, was primarily responsible for the Herberts move to the country. Living in the Talmadge Park section was not conducive to raising litters of Boxers. After Penny was bred and brought forth seven healthy pups, the family was almost forced to move to the country to give the dogs a place to run.

Several of Penny's children went on to win several show dog awards, but Penny spent her first months on the Ranch fighting with Dr. Stork's Boxer, Mrs. Herbert said. She was later put

to sleep because of a serious illness.

Between feeding his pet rabbit and going to school, Richard's chief interest is playing with the host of neighbor children. Four-year old David will enter kindergarten next fall, and baby John still finds that eating and sleeping are the most fun. Movies have recorded the entire married life of the Herberts and the rearing of their children.

Mrs. Herbert is active in the Garden Club, serves as secretary of the P-TA, and will become an assistant den mother for Richard's cub scout den in March.

**R. H.  
COPELAND  
INSURANCE**

—FIRE—  
—LIFE—  
—CASUALTY—

—Phone—  
PLaza 6-1447



MEET YOUR NEIGHBOR—Mr. and Mrs. William Herbert and their three boys had just returned from church when this picture was taken. Left to right, are, Richard, 8, John, 18 months, Mrs. Herbert, Mr. Herbert, and David, 4.

Photo by Nick Gulling

**CASAS de CAMPO, INC.**

*Builders of fine country homes*

Howard Steinwinter                      John Bancroft

P. O. Box 6  
Rancho Santa Fe  
PLaza 6-1171

## ART JURY: FEBRUARY 6 Harrison Re-elected President; New Members Are Seated

Howard Harrison was re-elected president of the Art Jury when the group met Feb. 6 for its monthly meeting.

Present for the first time at the meeting were: new member Claude R. Welles, who was elected vice president; George Vernon Russell, a Los Angeles, architect, who has been retained as Art Jury consulting architect; and, Glenn Lewis, a retired contractor from Oceanside, who is the new Association building commissioner.

Art Jury okay was given to four residence plans.

Approved were plans submitted Feb. 1 by Arthur J. Banker for a residence and car port in Portion of lot 5, block 24.

Also, plans submitted Feb. 1 by P. W. Pichel for a residence in a portion of lot 2, block 6.

And, plans submitted Jan. 30 by Edward J. Walz for a residence in portion of lots 1 and 2, block 5.

Final approval was also given to plans submitted by Gordon Kern for a residence in a portion of lot 4, block 47.

Additional drawings have been asked from Sverre Svendsen for plans submitted Jan. 30 for a residence, garage and swimming pool in a portion of lot 4, block 35.

Association clubhouse alteration plans were approved by the Art Jury.

More detailed drawings have been requested from Charles J. Houtteman for a garage in a portion of lot 6, block 33.

Three subdivisions were studied by the Art Jury. Recommended for approval to the board of Directors was the request of La Jolla Investment Co. to divide 24 acres in lots 2 and 3, block 36 into three parcels of 4, 5 and 15 acres each. A polo field is planned for the largest parcel.

The Art Jury, in written advice to the board, said that 3.53-acre parcels which would result in a subdivision requested by Union Title Insurance and Trust Co., were too small for the area involved. The proposed subdivision is located in a portion of lots 1 and 2, block 3. The Art Jury recommended that two larger parcels would be more desirable. The Art Jury also considered a subdivision request submitted by Charles Dupont. Dupont asked to divide slightly more than five acres in lot 92, block 18 into three parcels of 1.81, 1.69 and 1.59 acres each. The board will not consider the request until March 2.

Two horse corral locations and

designs were approved. Plans were submitted by W. R. Fawcett, portion of lots 12 and 13, and Emmett J. Manion Jr., portion of lot 6, block 27.

Alterations plans for a residence in a portion of lot 2, block 3, submitted by Oscar Bartels, were approved. Also a swimming pool plan submitted by R. M. Clotfelter, portion of lot 4, block 33.

Color samples for the following residences were approved: Dorothy C. Bancroft, portion of lot 2, block 19; Gordon Siegel, portion of lot 1, block 17; Walter C. Young, portion of lots 4 and 5, block 16.

## What's Doing on The Ranch . . . . .

**Book Club**—Feb. 28, 12:30 p.m. home of Mrs. W. R. Fawcett, Luncheon-business meeting.

**Los Ancianos**—Annual Meeting and election of officers, March 1, 6:30 p.m., The Inn, Meetin' House.

**Board of Directors**—March 2, 9:30 a. m., Association office (open).

**"Get Acquainted Luncheon"**—March 5, The Inn, Meetin' House, for Art Jury, Association Board, area builders and realtors.

**Art Jury**—March 5, 9:30 a. m. Association office (closed).

**School Board**—March 5, 8 p.m.

Rancho Santa Fe school.

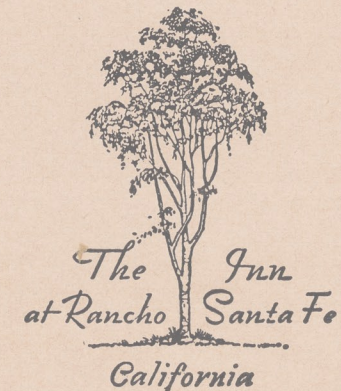
**P-TA**—Board Meeting, March 6, 9:15 a. m. RSF school.

**Irrigation District**—March 12, 9 a. m. Board of Directors, District office.

**Garden Club**—Arts and Crafts Show, March 13, 2 to 5 p. m., 8 to 10 p. m., March 14, 10 a. m. to 4 p. m.

**P-TA**—Annual Fashion Show, March 15, 2 p. m. The Inn.

**Board of Directors**—March 16, 9:30 a. m., Association office (open).



For reservations telephone PLaza 6-1131

R. M. Clotfelter, Manager

# Irrigation District Considers Pipe Line Master Plan

Directors of the Santa Fe Irrigation district have proposed that a master plan of the district's potential water distribution line needs be conducted in the near future. The proposal was, however, informal, and no motion was made.

Directors commented at a January board meeting that the district scope has almost completely changed since its beginning in 1923. Originally, the district was primarily a rural area, consisting of large acreages on which citrus and other crops were raised.

Gravity lines were installed to irrigate the crops, but the lines were only turned on during the daytime and a homeowner would have to build his own reservoir to secure domestic water.

After these concrete reservoirs were installed and a booster pump added for pressure, the home owner had spent about \$1500 to get water for domestic purposes, according to D. M. Bakewell, Santa Fe manager.

"This practice was impractical for the consumer and expensive for the district," Bakewell said. "To fill a 1000-gallon reservoir, 5000 gallons would be wasted in the lines."

With the Solana Beach-Rancho Santa Fe area rapidly changing from a rural to urban community, the district is faced with increased demands for pressure water.

If the entire district was surveyed by engineers, a complete study could then be made of potential demand for pressure water, the manager said.

The district could then gradually revamp the lines on the basis of expected growth and, as finances would allow. Bakewell emphasized that such a survey would not be perfect, since engineers' estimates of potential growth are subject to change.

Considerable areas within the district are already under a high pressure system, but many outlying sections, where future growth can be expected, are still under the old gravity system. The lines are inadequate to facilitate residential development and at the present time, the irrigation district does not have sufficient funds to install lines in all areas requesting improved service.

Considerable areas within the District are already under a high pressure system, but many outlying sections, where future growth can be expected, are still under the old gravity system. The lines are inadequate to facili-

itate residential development and at the present time, the irrigation district does not have sufficient funds to install lines in all areas requesting improved service.

Last year, 26,676 feet of pipe was installed in the district at a cost of \$74,443.33. The district also spent \$6,177.51 in re-lining old pipe. Explaining this procedure, Bakewell said that the pipe is opened every 500 feet and brushes clean the corroded lines. Re-lining lasts from 15 to 20 years and doubles the carrying capacity of the lines.

The district also spent nearly \$17,000 on new pumping plants. These projects were financed by the general fund, \$52,734.07, and by the land sales fund, \$46,524.43. Additional funds came from subdividers who are required to furnish lines to each house site.

The district plans to spend \$40,000 on its 1956 pipe replacing program.

The rapid growth in the Santa Fe Irrigation district is quite accurately reflected in the increase of irrigation and domestic meters.

In 1926, when the first accurate count of domestic meters was made, there were 123 domestic meters. Early in January the number was 1233, over ten times the original figure.

In the last four years, domestic meters have increased by 343 and irrigation meters by 91. Counting four people for each domestic meter, this is indicative of a population gain of nearly 1400 residents, Bakewell explained.

The \$700,000 bond issue which financed the original pipe lines now has decreased to \$263,000. When the depression hit, the bonds were refinanced in 1935 through the Reconstruction Finance Corporation, from a \$650,000 indebtedness to \$395,000. The district now retires about \$11,000 in bonds each year and the entire bond issue will be paid up in 1972.

Interesting to note is the fact that the original bond issue was passed by only four land owners, a Mr. Collins and Harry Payne Whitney who both had extensive holdings, the Santa Fe Land Improvement Company, and the late Col. Ed Fletcher, who subdivided Solana Beach.

Bakewell said the Land Improvement Company was so anxious to proceed with its Rancho Santa Fe subdivision that nearly \$200,000 was spent installing the first Ranch pipe lines before the bond issue was actually pass-

## Changes Noted At Golf Course

Several changes are now underway at the golf course, according to a report from the greens committee.

The far end of the 17th green is being raised two to three feet, to create a bunker effect. The green had sloped in such a way that golf balls often rolled off into the rough.

The change is part of the master plan proposed by Lawrence Hughes, consulting golf architect.

A path is also being constructed north of the 17th fairway down the bank to the maintenance yard.

Carl Croft, chairman of the committee said that the new fairway drive is now complete and will soon be ready for play. All golf cart paths have been resurfaced, he said.

## January Rains Top Preceding Months

More rain fell Jan. 27 in Rancho Santa Fe than during the entire preceding seven months. The rain gauge of R. E. Badger showed that 2.16 inches soaked the ground on the January date. From the preceding July 1, the beginning of the rain year, 2.11 inches had fallen.

On the day following, Jan. 28, .08 inch was recorded. Showers on Jan. 31 brought an additional .27 inch.

Total rainfall since July 1 is now 4.62 inches, still considerably below normal.

## Fire Dept. Building Nears Completion

Construction on the combination fire chief's residence and office, is expected to be finished by April 1. The \$15,664 structure is being financed from funds allocated in the current fiscal year's budget. Construction is being done by the George Wright Construction Co., San Diego. It also built the District garage four years ago.

The company was later repaid, he said.

Mr. Bakewell has been on the district staff for 31 years. He has had practical experience in all phases of district work. He first worked in Solana Beach installing pipe and after 1½ years became a clerk in the office. He was appointed manager in 1936.

**BULK RATE**  
U. S. POSTAGE  
PAID  
Rancho Santa Fe,  
California  
Permit No. 15

## Engineers Complete Hodges Survey

A survey of the San Dieguito River and a proposed super Lake Hodges dam was this month completed by Army engineers, according to a letter read Feb. 13 to the Santa Fe Irrigation district Board of Directors.

The survey has been pending for 10 years. Hodges dam was first proposed as a flood control project after several floods damaged the San Dieguito basin. Herschel Larrick, chairman of the Board was instructed to study the report in Los Angeles with Army engineers.

## Signs Ordered

Post Office signs have been ordered and will soon be attached to the arch above the arcade entrance.

Postmaster Haskell Strawn said that postal employees are now firmly established in their new quarters. He thanked the public for putting up with the inconvenience necessary during and after the move.

## Trees Stolen

Several dozen young trees planted along El Vuelo road were recently reported stolen by Dr. Clarence W. Lieb, owner of the trees. Dr. Lieb said the trees were pine and were about three feet in height. He asked that anyone having information on the tree theft contact Sheriff Pelko.

## 20 Ranch Students On San Dieguito Honor Roll

Twenty students from Rancho Santa Fe were named to the first semester honor roll of San Dieguito High school. The honor list was announced Feb. 7 by Principal Matt Korwin.

Honors were awarded to 178 students who acquired at least a B average. Ranch students included on this list were:

Seniors — Heather Clark, Dick Hillman, Maylo Lewis and Mary Lou MacFall.

Juniors — Dieter Amtmann, John Rice and Susie Wilks.

Sophomores — John Lehotsky and Barbara Ward.

Freshmen—Gunter Amtmann, R. C. Blackledge, William Buck, Georgia Crane, Leroy Dennis, Mariel Finch, Ralph Lehotsky, Dordi Venberg, Carol Ward and Richard Wheelock.