



May this be your happiest Christmas . . .

may your joy be so great, that you
treasure forever the wondrous
memories of this happy season . . .

In every way — may this truly be a

Merry Christmas

**RESULTS OF
VOTE ON GOLF
COURSE OPERATION**

345 YES

188 NO

December, 1960

RANCHO SANTA FE BULLETIN

PUBLISHED BY THE ASSOCIATION FOR THE BENEFIT OF ITS MEMBERS

Volume 7 Number 12

Board Asks Street Name

At the regular meeting of the Board of Directors of the Rancho Santa Fe Association held in the offices of the Association on November 4, it was moved, seconded and carried that the following resolution be adopted: **BE IT RESOLVED:** That

Secretary Smart be directed to write to the Honorable Board of Supervisors, San Diego County, on behalf of the Board of Directors of the Rancho Santa Fe Association respectfully requesting that the road at the Rancho Santa Fe Fire Station be named "El Fuego."

The meeting was called to order at 9:00 a.m. following a hearing for the purpose of any discussion or objections relative to the application of Robert Keith, Dorothy T. Keith, Ruth L. Swisher, William H. Drew and Marion H. Drew to change the number of parcels of Lot 1, Block 47, Map 1742 from four to eight, application dated August, 4, 1960. No comments from the floor, and the hearing was closed.

It was unanimously voted that Robert Keith, Dorothy T. Keith, Ruth L. Swisher, William H. Drew and Marion H. Drew be requested to submit a tentative map showing the proposed eight parcels of Lot 2, Block 47, Map 1742, in accordance with petition dated August 4, 1960, prior to Board action on said petition.

Action was deferred on the petition of Fletcher-Martin et al of Lot 3 and Por. of Lots 2 and 11, Block 24, Map 1742, petition dated July 12, 1960, pending advice of the Art Jury as to the feasibility of the proposed thirteen parcels in accordance with tentative sub-division map dated October, 1960.

It was unanimously approved that Dr. Victor Stork be appointed to the Chairmanship of the Zoning Committee of the Association acting under the Planning Committee.

The following letters were read and ordered referred to the proper channels: Rey, Gerald E. Molgren re holding

Lutheran Services in a Rancho Santa Fe residence. This was referred to Attorney Clayton.

Mme. Eugene Fraser re Trash Receptacle for Association Triangle Parks in the Civic Center.

Mme. Harry Hall re appointment with the Board of Directors.

Rancho Santa Fe Garden Club re Commendable deeds of Boy Scout Troop 717, Local, for removal of roadside litter.

Attorney Clayton reported on and conferred with the Board with reference to legal matters pertaining to the Association.

Secretary Smart presented Glenn F. Lewis, Building Commissioner's Report for the month of October, 1960.

Secretary Smart presented 'Clipping Service' report to the Board.

Secretary Smart presented the Rancho Santa Fe Association's County Tax Bills to the Board.

Secretary Smart reported Gross Revenue for the month of October, 1960 as follows: **GOLF COURSE, Green Fees** — Cash \$6,426.75; Playing Privileges, \$598.50; Electric carts, \$1,678.30; Lockers — \$156.50. Total — \$13,360.05, a gain of \$1,149.95 over last year.

GOLF SHOP: Carts — Hand \$75; Carts - Electric \$436.50; Cleaning and Storage \$358.50; Merchandise \$2,572.33. Total: \$3,442.33, a decrease of \$1,037.50 from last year. Restaurant and Bar: \$6,455.06 a decrease of \$158.76 from last year.

MACADAMIA NUT TREES

Exciting New

Early Bearing
Thin Shelled Varieties

Orders Taken Now

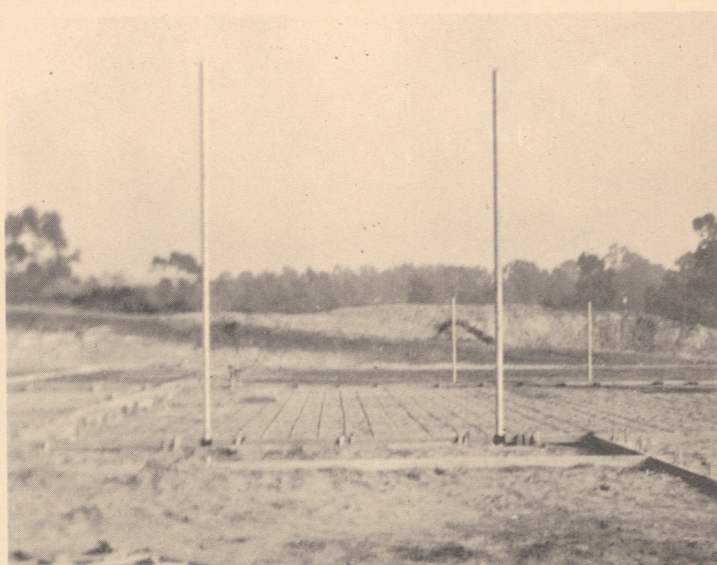
CLIFF TANNER
Tanner Nursery

Via del Alba
Rancho Santa Fe
PL 6-1622

Information Bulletin of the Rancho Santa Fe Association

Peggy Walker, Editor
Rancho Santa Fe, California

Board of Directors — B. F. Jenkins, President; David B. Dewey, Vice-President; Sidney B. Jandorf, Francis J. Hoyne, Fred H. Lewis, William Schofield, Neil Randol, W. A. Smart, Secretary-Manager.



A VIEW of the new tennis courts at the Golf Course midway in construction. The new courts, located directly north of the existing courts will be ready for play the first week of December.

Grill Sets New Menus

Chef Milo Lenton of the Clubhouse Grill has announced a new plan for "Specials" to be featured every week. Tuesday will headline ham, attractively arranged in the following: Baked Ham and vegetable, Hot Ham Sandwich, and Barbequed Ham on Bun. Beef Stew and vegetables, Beef and noodles, or Beef pie are the selections for Wednesday. Thursday can be referred to as 'Dinty Moore Day' with corned beef and cabbage as the headliner. It will

also be featured in a hot sandwich with eggs. Crab Louis or a grilled fish plate are the selections for Friday. And Saturday sees the Southwest favorite, chile, in the fore. It will be served as chile size and chile macaroni as well as hot steaming bowls of chile and crackers. Chicken every Sunday as pot pie or ala king and noodles.

In addition the Clubhouse Grill will continue to serve their regular menu which features many attractive and popular dishes and is highlighted by the homemade cakes and pies of Chef Lenton.

Residences
Building Sites
Investment Properties

In Rancho Santa Fe
And Adjoining Areas

NELSON and CHAPIN

Montgomery L. Hart, Associate

PASEO DELICIAS

Auxiliary Work Rewards Members of Las Duenas

A visit to the San Diego office of the Children's Home Society is on the agenda for December 6 for members of Las Duenas, San Dieguito Auxiliary of the Children's Home Society of California. This event follows in the wake of an interpretation luncheon given Oct. 27 in the Rancho Santa Fe Garden Club to honor the groups' Associate Members and to acquaint interested people with the services provided by the Society.

The luncheon, which was attended by about 125 women, was followed by a program of colored slides, "The Story of an Adoption." The next major event on the club's calendar will be a tea dance next spring.

Drawn together by a mutual interest in children, and particularly children who have found their families through adoption, Las Duenas was organized last year by 22 women from Solana Beach, Del Mar, and Rancho Santa Fe. Rancho Santa Fe women serving as the group's officers are Mrs. Herman Fritzenkotter, president; Mrs. Roger Woolley, vice president; Mrs. Richard McClure, Ways and Means chairman; and Mrs. Samuel Johnson, Publicity chairman. Other active members from the Ranch include: Mmes. William W. Apple, Hubert E. Brooke, Eugene Freeland, Peter Gillies, Richard Harris, William H. Mollering, George Robertson, Lewis Scarr, and William H. Walker.

Two major affairs were given by the club last year, an Interpretation coffee to bring to the community the story of the work of Children's Home Society, and a "Mad Hatter" tea dance, a combination fun and fund-raising affair. The group also sponsored a Christmas party for the Society's foster parents in the San Diego area.

These are the families who care for children awaiting permanent placement. They are as carefully selected as the adopting parents.

Las Duenas is one of more than 150 auxiliaries throughout California which assist the Children's Home Society. The 69 year old agency over the years has placed more than 20,000 children in carefully selected adoptive homes. The only state-wide agency licensed by the State of California to place children for adoption, it is a fully accredited member of the Child Welfare League of America and serves children and parents of all races and faiths.

The Society was founded in 1891 by Dr. and Mrs. J. R. Townsend, missionaries, who, after the death of their only son, decided to dedicate their remaining years to work for needy children. Their program was part of a national movement to care for homeless children in family homes rather than in institutions. The San Diego office, one of 14 in the state, was opened in 1927.

The Society provides a three-fold service: to parents who wish to consider possible adoption for their child; to children for whom adoption is being considered; and to couples who are interested in adopting a child.

Approximately 83 per cent of the children served by the Society are infants under a year old, the balance includes children up to their teens. The great majority are completely normal, but about 7 per cent have medical problems or physical handicaps and require more specialized efforts in meeting their adoption needs. The Society has been successful in finding homes for children whose problems have included blind-



MRS. WILLIAM H. MOLLERING, Mrs. Herman Fritzenkotter, and Mrs. Hubert Brooke, members of Las Duenas Auxiliary of the Children's Home Society of California, are shown ready to join other members of the group for a visit to the Children's Home in San Diego.

ness, deafness, or a crippling condition. Children from minority groups or with mixed heritage represent approximately one-fifth of those served.

A child coming under the care of the Society is immediately placed in a specially selected temporary boarding home, while permanent plans are being completed for him. It is the policy of the Society to place each child in his permanent home as soon as possible; the average length of care of all children is about three months.

Much of the work of the Society results in the direct opposite of adoption. Sometimes parents, as a result of counseling services, decide to keep their child. When adoption is not indicated, the Society aids in securing for the parent the assistance of other social agencies

that are equipped to help with the specific problem.

Where adoption is decided upon as the proper course, the Society's careful adoption process assures placement in the home best suited to the child, and gives the adoptive parents a child who the Society, after lengthy study, believes is "right" for them. It protects the adopting parents from possible future interference, since the natural parents who relinquished the child to the Society for adoption have no knowledge of where or with whom the child is later placed.

Working to assist the Children's Home Society has been a very rewarding experience for the members of Las Duenas, and they welcome community support in this worth while cause.

CASUAL CORNER DRESS SHOP

COUNTRY SQUIRE COURTYARD

RANCHO SANTA FE

Distinctive Christmas Gifts:

COSTUME JEWELRY -- HANDBAGS

LLAMA SLIPPERS -- SWEATERS

Also Many Other Novelty Things

(For the Woman and the Man)

Rancho Santa Fe
Country Homes and Homesites

R. M. CLOTFELTER

Licensed Real Estate Broker

Since 1931

PLaza 6-1422

Paseo Delicias

SOURCES OF UNSIGHTLY LITTER STUDY OF CLEAN-UP COMMITTEE

Members of the Clean-Up Committee of the Garden Club's Beautification project have been attacking the problem of the mounting litter on Rancho roads. At a recent meeting they sought to pinpoint the sources of this debris and to outline methods for improving the situation.

Mr. Harold Oliver, Chairman of the Clean-Up Committee and Fire Chief James Fox, who has spearheaded clean-up here on the Ranch, met with committee members Maitland Bakewell, Don Dickinson, Ben Fisher, and Dr. James Irwin. Dr. John Bovee, who is head of the Explorer Scouts was also present. Dr. Neil Randol, a Director of the Rancho Santa Fe Association and President of the Rancho Santa Fe School Board, joined this group to help implement their plans for an effective clean up campaign.

The accumulation of litter has become so heavy that the Explorer Scouts, who remove this debris monthly from Rancho Santa Fe roadsides, now are able in many cases to clean up only one mile of road in one morning's trip, working 14 Explorer Scouts with two trucks. The trucks for the Scouts use are loaned by Messers. R. E. Badger, Arnold Buck, and R. C. Francisco. The Rancho Santa Fe Association also donates a

truck for the Saturday clean-up. The following projects will be undertaken by the Clean-Up Committee during the balance of this year and in the coming year.

Anti-Litter and Continuing Clean-Up Campaign Poster Contest in Rancho Santa Fe School; prizes and good publicity will be given to heighten interest.

More assistance and better publicity given to Explorer Scouts.

Methods of dramatizing the litter problem.

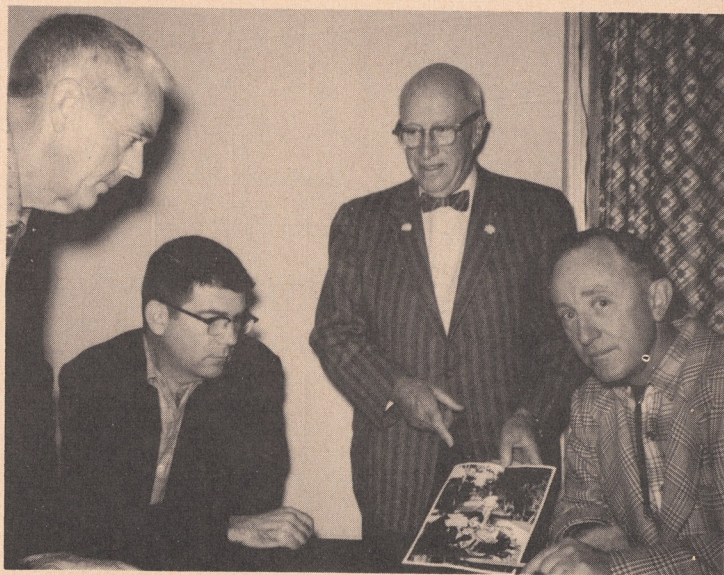
Recommendations for additional strategically placed trash containers; repainting present ones.

Study of National, State and County anti-litter laws, and ways of enforcing them on the Ranch.

Research on what part of our taxes are used for roadside clean-up and what responsibility the County assumes on Clean-Up.

Letters to Ranch residents, arousing them to each citizen's responsibility in this clean-up problem.

Anyone having any suggestions for the benefit of the Clean-Up Campaign is urged to phone Mr. Oliver, PLaza 6-1933.



MR. HAROLD OLIVER, chairman of the Clean-up Committee of the Beautification Committee shows pictures of trash collected by the Explorer Scouts to members Don C. Dickinson, Dr. John Bovee and Dr. Neil Randol.

Toys for Tots

For several seasons past members of the Tank Battalion Reserve of the United States Marine Corps have done themselves proud by collecting, repairing and distributing toys to needy children. This worthwhile

project benefits all needy children in the San Diego area. Once again Ranch residents may take part in the Toys for Tots program. A collection station for donations has been set up at the Fire House on El Fuego. Suitable toys, new, used or repairable will be greatly appreciated.

JOHN F. GILL

Jeweler

Fine Watch and Jewelry Repairing
Pearl and Bead Stringing
Diamonds - Jewelry Designing
Our 11th Year in La Jolla
1200 Prospect St. GL 4-3285
(West End of Ivanhoe, across Denslows)

FOR CHRISTMAS
Fascinating DISH GARDENS
for a Living Gift
that grows on you.

Lessar Nursery

CACTI and SUCCULENT
WONDERLAND
PLateau 3-5192
396 N. Highway 101
Encinitas, Calif.

BLYTH & Co., Inc.

UNDERWRITERS AND DISTRIBUTORS
OF SECURITIES NATIONWIDE

FOR INVESTMENT INFORMATION CALL

ZENITH 7-0064

(NO INTER-CITY CHARGE)

BANK OF AMERICA BUILDING
SAN DIEGO 1, CALIFORNIA

OFFICES IN 24 CITIES



HELLO THERE!

MY REAL
OCCUPATION IS:
BUILDING
REMODELING
HOME REPAIRS

GIVE MY BOSS A CALL.

"A GOOD PLACE TO BUY"

LUMBER & BUILDERS SUPPLY

SOLANA BEACH — SK 5-1131

Navigation Study Set by Explorers

Members of the Explorer Troop 717, Rancho Santa Fe, are looking forward to the month of December and beginning a study course in navigation and map reading. The Explorers welcome all boys from ages 14 through 17 years of age. They meet the first and third Tuesday of each month at the Firehouse. Their advisors are Doctors John Bovee and John Geir, Mr. John Berkson and Fire Chief James Fox.

As the navigation course proceeds the boys will have an opportunity to test their ability in practical problems. They are hoping to culminate their studies with a local flight in light aircraft. Anyone wishing to assist the boys in this program are asked to call John Berkson at PLaza 6-1704.

The boys are anticipating hosting a Christmas season dinner and fun party for about thirty children from the Pala Indian Reservation. They will distribute gifts during the evenings' entertainment.



HERE IS ONE OF THREE such truckloads of trash gathered by the Explorer Scouts on a recent Saturday morning along a short stretch of Rancho roads. Pictured from l. to r. are John Berkson, one of the advisors to the group, Michael Creutz, David Wagner, Harvey Walseth, John Fox and David Dewey.

FOR SALES
AND SERVICE
WITH
GUARANTEED
SATISFACTION...



100 NORTH HIGHWAY 101

IN ENCINITAS
YOUR NEAREST FORD DEALER
PLATEAU 3-1161

Yarns, Knitting, Accessories,
Ribbons — Specializing in
CREATIVE GIFTS
with
CREATIVE KNITS
by GLADYS

Gladys Davis Helander
5639 La Jolla Blvd. - GL 4-6605
La Jolla, California



At your service

COMPLETE CONTEMPORARY INTERIORS:
DRAPERIES, WALL-TO-WALL CARPETS,
WALL PAPER, IMPORTED AND DOMESTIC
FURNITURE — DESIGNED TO FIT
YOUR BUDGET AND YOUR NEEDS

FREE CONSULTATION WITH OUR
DECORATORS IN YOUR HOME

CALL PLaza 6-1982
FOR APPOINTMENT...



SHEPARD'S
SAN DIEGO AND RANCHO SANTA FE

Art Jury Meeting

Members of the Art Jury met in the Board Room of the Association for their regular meeting on November 9. The meeting was called to order at 9:00 a.m. by President Claude Welles. Also present were members Carl Muench and architect Raymond Jung and alternates Victor Stork and William Norgren.

Permits were issued, in each case, since the October 12 meeting and approvals were given to the following as additional showings have been presented: Theodore Kolby - Exterior Color of Residence; Frank S. Watts - Swimming Pool; Herbert Knight - Screened Porch; Victor Mature - Steam Room and Lounge; John Johnson - Color - Exterior of Residence; Howard L. Glasgow - Color - of Barn, Corral and Residence trim; George Brent - Feeding Sheds; and W. H. Mollering - Exterior Color on Residence.

Consideration was given to the following: Preliminary applica-

tion of William W. Apple to construct a Residence and Garage. Additional showings have been requested. To the application of 'Bill and Emma's Restaurant' to erect a sign. To the proposed 13 parcels of Petition submitted by Fletcher-Martin et al. To the Lot Realignment application of A. C. Busche, Jr. To the application for Subdivision of Fred Sproul, Jr. To the application for Subdivision of E. C. French. To the application for Subdivision of Lloyd B. Farmer. To the application for Subdivision of John Truog. To the application for Subdivision of Mesa del Rio.

Approval was given to the Preliminary application of William M. Malott to construct a Residence and Garage.

Approval was granted to the following applications. Donald Wahl to construct a Residence, Garage, and Pool. Aperance - Blackledge & Seigel to construct and Addition to Commercial building. J. Edmond Kowalski to construct a Maid's room. C. Teitsworth to construct a cupola.

Special Meeting Report

A special meeting of the Board of Directors was held in the Association office on Friday, November 11. Present were President Jenkins, Vice-President Dewey, and Directors Hoyne, Jandorf, Lewis and Schofield. Director Randol was absent.

The Special Meeting was called by President Jenkins for the purpose of completing the contents of the "Voting Notice" and "Ballot" to be mailed to all Association Members relative to the adoption of the "Proposed Plan For the Operation of the Rancho Santa Fe Golf Course" as submitted by the Board of Directors on October 3, 1960. Said notice was completed and the office of the Association was directed to mail same on Wednesday, November 16, 1960.

The following Association Members addressed the Board on subjects as indicated:

Messrs. Millard and Lee re letter to be mailed all Association Members prior to the voting on November 29, 1960.

Secretary Smart presented Progress Report re remodeling off the "Old School Building." The Board directed Secretary Smart to notify the Planning Committee of the Association that a Representative of the Richard Wheeler Organization will meet with the Committee to submit a bid on the proposed work.

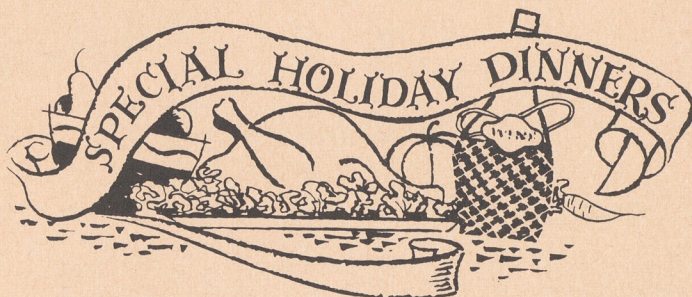
The Board directed Secretary Smart to secure a written proposal on the remodeling of the "Old School Building" from Architect Sommers.

There being no further business the meeting was adjourned.

custom imports jerome d. gordon

- creative picture framing •
- oriental art • carved wood • gifts • special orders

1832 S. Hill, Oceanside, California SARatoga 2-0648



TRADITIONAL CHRISTMAS FEAST

on both Sunday, Dec. 25 and Monday, Dec. 26

These special holiday dinners are a treat the entire family will enjoy... in the lovely and relaxing setting of the Garden Room.

\$6.00 per person
Children \$3.50
2:30 to 7:30 P. M.

Reservations Suggested
PLaza 6-1131

Wesley B. Hadden, Vice President

- GENERAL OFFICE and SCHOOL SUPPLIES
- ART and DRAUGHTING MATERIALS
- HALLMARK CARDS and PARTY SUPPLIES
- CHRISTMAS GREETING CATALOGUES

★ North Coast Stationers ★

OPEN 9 A.M. - 6 P.M. DAILY

127 N. Hiway 101 - Solana Beach - SK 5-4923



Traditional Countrywear
for
Men and Women

RANCHO SANTA FE - PLAZA 6-1996

Meet Miss Blasdell

When you call the Rancho Santa Fe School the friendly voice at the other end of the line belongs to Miss Jean E. Blasdell, the school secretary. This is who your child is referring to when he says, "Jeanie told me I could use the phone to call you," or "Jeanie fixed my sore finger," she doubles in first aid. And in addition to all



MISS JEAN BLASDELL

this is an accomplished artist.

Miss Blasdell is a graduate of Oceanside High School and attended college in Milwaukee, Wisconsin. She was employed by the Oceanside High School District before coming to the Ranch.

Don't bother learning the name of Blasdell though, she's changing it on December 18. That is the day she will become the bride of Steven R. Chubbic of El Centro in El Centro Community Church. It doesn't mean she'll leave us though, for they have purchased a large two bedroom trailer in which they will live in Encinitas. Jeanie will continue her myriad duties at the school while her husband completes his college education.



SPRING TRAVEL TONIC!

Stella Polaris

COMPLETELY AIR-CONDITIONED

GRAND MEDITERRANEAN SPRING CRUISE

sails from New Orleans, March 30, 1961
69 days, 30 ports (to Boulogne)

Optional: to Naples (54 days), to Monte Carlo (58 days)

Greek Islands, Egypt, the Holy Land, Russian Riviera, Dalmatian Coast. Cruise membership limited to 165. Rates from \$1600 (69 days), \$1440 (58 days), \$1400 (54 days).

for information and reservations

del mar travel bureau your link with the world
1150 HIGHWAY 101, DEL MAR, SKyline 5-1515



TUXEDO RENTALS COMPLETE..SUITS or..WHITE..JACKETS

For the quality and style minded customer who wants "innovations in good taste."

\$9.00 Complete
Daby's
RANCHO SANTA FE

THE SUGAR PLUM TREE



offers
GREETING CARDS
TOYS
CANDIES
BOOKS

ED & DOROTHY CHRISTOFFEL - PL 6-1682

Christmas at the Ranch

Two community carolling programs which have become a tradition at the Ranch will take place on Thursday, Dec. 15 and Sunday, Dec. 18.

The first gathering will be the Annual Christmas Sing held in the Civic Center, in front of The Inn. This program is the school children's Christmas gift to the community. Each grade level from kindergarten through the sixth grade will have a special carol which they have readied for the occasion. Junior and Senior High School students will sing several old Christmas songs. The Reverend Chester Tolson will lead the community singing.

At 7:00 o'clock in the evening the bells from the Village Community Church will play. At 7:30 the program will begin with the procession of children from the "Old School" parking lot to the Center. The highlight of the evening will be the lighting of the giant Christmas trees in the parks adjacent to the carolling area.

The Community Carolling has fond memories for many Rancho residents. It is an outgrowth of the holiday festivities and Christmases when the Ranch was young. Then, R. E. Badger and Russell Millar would load an old pump organ on the back of one of the Badger's trucks, gather up the 20-odd Ranch children and away they went. Mrs. Albin Pelko, now of Escondido, would play the organ and lead the singing. First stop was the Bingham's where every window held a glowing candle. Then out the Escondido road and towards the Lake to the Arthur Wicks' (now the A. F. Hunt's), where the stately pine in the front garden was alive with lights. Next to the Jas. Smillie's (Bartel's) and over to the Carmichael's (now the home of Dr. and Mrs. Milton Stout); down the Valley to the Gilberts' (Dr. Victor Stork's) and the Bristol's (now Hoadley); over the hill to the Burnhams and out to the Harries' (Engle), and always trying to visit those who were housebound. Then back through the crisp air to the Civic Center and the La Morada Hotel (now The Inn). And always ending up the evening at the home of Mrs. Louise Badger and her mother, Mrs. Celestine 'Mama Titi' Garvey who were waiting with pitchers of hot chocolate and plates of Christmas goodies.

Not a White Christmas, no sleighs and bells or brick paved streets, but gravel roads and California holly and an old truck filled with eager kids. A new community making its own traditions and memories.

Sunday evening, December 18, will find members of the Garden Club and their families and friends gathering at the Club-house for a program of Christmas carols and stories. Mrs. William P. Remington will again lead the singing and tell of Christmases both near and far for her enraptured audience.

The Garden club carolling started about 20 years ago when the Ranch began to grow. The real beginning took place in the home of the late Mr. and Mrs. Samuel H. Bingham, music lovers, who for many years hosted a holiday carolling party at their home on La Valle Placeta.

When the numbers attending became too many for even her spacious home to accommodate Mrs. Bingham enlisted the aid of the Garden Club. She donated a generous number of song books, some of which are still in use, and enlisted the aid of well-known concert musicians to make the transition from home to club setting a hospitable one.

Though in poor health for several years before her death last year, Mrs. Bingham always made a special effort to get to the Garden Club Carol Party.

The program will begin at 7:30 p.m. and will be followed by refreshments. Mr. and Mrs. Charles Chapin are hospitality chairmen.

FEEL BETTER AFTER 40!

Nervous fatigue, tension, lack of sleep, aches and pains—all are typical symptoms of the critical years past 40. Don't accept all of these discomforts as part of growing older! Niagara's unique three-way Cyclo-Massage is your answer—helps you feel years younger! Niagara should not be confused with ordinary 1-way vibrators.



of DEL MAR
1150 Hwy. 101 - SK 5-9636

Land Transfers

Real estate sales and transfers recorded in the office of the Association as of press time. New members of the Rancho Santa Fe Association are shown in bold face type.

Edwin B. and Jane Lucas, h-w, to **Calvin L. and Gwendolyn Stanger**, h-w, portion lot 3, Block 23, and Lots 1 and 2, Block 35, Rancho Santa Fe.

Elsie R. Mitchell to **Ewing Y. and Lauretta Mitchell**, h-w, portion Lot 7, Block 9, Rancho Santa Fe.

Kenneth P. and Elizabeth B. McNaughton, h-w, to **Donald and Marjory Wahl**, portion Lot 4, Block 3, Rancho Santa Fe.



JAMES MORIARITY of Scripps Institute of Oceanography explains some of the fine points of exploration of the Archeological Study Group of the Ranch School. A portion of the artifacts, these are monostones, found by the youngsters are shown on the ground.

FREE DELIVERY
to Rancho Santa Fe every Monday and Thursday

SIRENE'S
for the finest
LIQUORS & WINES
"The Friendly Store in Solana Beach north of the traffic lights"
SK 5-2112

OLA JOHNSON . . . GARDEN SHOP

FOR CHRISTMAS

YOUR Garden is our Business!

Give a Living Plant
From Our Complete Stock
Of Choice Quality Plants.
You'll See, There'll Be Happy Memories.

And For Your **CHRISTMAS TREE**
ORDER EARLY for Best Satisfactoin.

★ **FLORAL SHOP:** Cut Flowers
Ceramics
Gift Accessories

WE NOW GIVE 25¢ GREEN STAMPS

Rancho Santa Fe • In the Village Center on La Granada • **PL 6-1427**

For The Discriminating Gourmet

H. & R. Grocery
GL 9-3333

John's Market
GL 4-2730

The Fancy Pantry
GL 4-2121

Town & Country Liquors
GL 9-3331

GIFT BASKETS
Gift Wrapped

VINTAGE WINES -- FAMOUS LIQUORS
RANCHO DELIVERIES ON TUESDAYS & FRIDAYS
CHARGE ACCOUNTS

La Jolla

Site Excavation Continues

There's an old saying around here that if you want to bring rain just plan an outdoor activity. This really seems to be true too, because for the past several weeks activity on the archeological excavation on Torrey Pines Mesa being done by members of the fifth and sixth grades at the Ranch school has come to a halt as a result of wet ground. And while the light loamy soil in your garden may dry out rapidly the rich, dark, silky earth at the site holds moisture like a sponge.

However, up until the arrival of the rain and heavy dew much was accomplished by the group. They started the site excavation with a checkerboarded area 55 feet square. The children are working in teams of two and each team has a five foot square in which it operates. Most of the teams have gone down to a depth of about 14 inches. They have unearthed some 780 arti-

facts, most of which represent monos, hammerstones, cores and scrapers. Two major finds have been unearthed during the last two digging sessions. Both were spearpoints, which incidentally, are the first pieces of evidence to come from a La Jolla Indian site to show that these Indians used weapons of any kind. There is a possibility, of course, that these represent later tribes which may have existed in the same area. No evidence has been found to show the presence of later tribes.

They are now reaching a solid layer of caliche and will sweep this layer clean looking for covered bone materials.

It is interesting to observe the quietness and dedication with which these children carry out the instructions of Mr. James Moriarity, who is directing their digging.



JAMIE TORIAN shows Kenny Isaacs the spearpoint he unearthed at the archeological excavation site on Torrey Pines Mesa. It was the second such weapon found by members of the expedition.

Christmas Gifts

for

Outdoor Living

THE-PATIO-LANAI SHOP

5542 La Jolla Blvd.
LA JOLLA
GL 4-7733

Patronize the Advertisers

Helen M. Eldridge and Associates

5640 LA JOLLA BOULEVARD
LA JOLLA, CALIFORNIA
GLENCOURT 9-2651

- Lighting Fixtures
- Lamps
- Lightscaping

Because You Love Nice Things

It's DEL MAR DRUG for . . .

PRESCRIPTIONS

our specialty — skillfully and promptly filled!

- Complete line of sundries — cameras, films candies, etc.

EXCLUSIVE COSMETICS

- featuring . . .
- Elizabeth Arden
 - Dorothy Gray
 - Guerlain's
 - Max Factor
 - Faberge
 - Revlon

1436 Highway 101, Del Mar • Phone: SKyline 5-2502

CONVEYING SEASONAL GREETINGS

JOHN IANNUCCI PLUMBING

Rancho Santa Fe
Post Office Box 17

NEW CONSTRUCTION REMODELING

REPAIR WATER SOFTENERS

WORK GUARANTEED

License No. 184661

PLaza 6-1511

STAG & DOE



Sportswear

SOLANA BEACH

118 SOUTH ACACIA AVENUE
(Opposite Theatre and Market Basket)

TO OUR CUSTOMERS ON THE RANCH:

You are cordially invited to see our fine selection of Christmas Time Gifts, and to enjoy our friendly assistance in your search for the "Right" present. **FREE GIFT BOXES**

Open till Six
BANKAMERICARD and CHARGES

Words of Wisdom

It is never a pleasant job to discuss fire and related tragedies, but it is especially difficult at a time of happiness and good cheer such as the approaching holidays. However, the Bulletin with many thanks to Fire Chief Fox for the information offers the following "Words to the Wise."

Be sure your tree is standing in a tub or pail of moist earth or water.

Set it up in a cool part of the house, away from radiators, heaters and fireplaces.

Do not have the tree blocking an exit from the room or the house.

Make sure every lighting set and electric cord you use is in good condition - no worn or frayed wires, no loose sockets. NEVER use candles.

Be positive that all electrical sets bear the U.L. label. Those so marked have passed Underwriters' Laboratories' tests for fire and shock hazards.

See that a switch is provided some distance from the tree for turning tree lights on and off. Use only ornaments made of

fireproof materials, such as metal or glass. Never decorate with cotton or paper unless they are labeled "fireproof" or "flameproof."

Set up electric trains a safe distance from the tree. NEVER set up electric trains or toys under the tree.

Dispose of all gift wrappings immediately and safely.

Safeguard Children

Don't leave children at home alone - at Christmas or at any other time. Many children die in fires as a result of being left at home alone.

"All too often fire is started by children playing with matches," Fire Chief Fox states. It is estimated that some 1,700 children die every year as a result of fire in the home, a sizeable portion of the overall average 11,600 yearly fire death toll in the United States.

This is the season of the year when fire losses - both in lives and property - are greater than average. Last year in the three day Christmas holiday, 42 persons died as a result of fire. In a comparable three day period in 1958, 92 died. The one-day Christmas toll in 1957 was 26.

The four day week end of 1956 took 54 lives. And on Christmas Eve 1955, 23 died, most of them children. What will the toll be this Christmas week end?

The facts point up the need for greater fire safety and increasing reliance on the Fire Service for the protection of our community.

The members of our Fire Department will again render the community a valuable service by flameproofing Christmas trees which may be brought to the Fire Station for this treatment. This process does not change the color of the tree and in many cases even improves the appearance. We urge you to take advantage of this opportunity.

The Fire Commissioners, the Fire Chief and members of the Rancho Santa Fe Fire Department take this opportunity to wish you and yours a Very Merry Fire-Safe Christmas.

I'm Still Here . . .
Glad to Wish You
"MERRY CHRISTMAS"
and Good Luck to You All.
Always a smilin'
at the old stand —
**THE RIDING STABLES
TEX WIMER**

Copper Miss Kennels
Training
Boarding &
Inside Sleeping
Quarters
**Blackie &
Vi Yates**
155 Saxony Rd.
ENCINITAS
PL 3-3142



incomparable
Pasadena's Smartest Restaurant
Springboards into La Jolla
Now the **ONLY** one
FULLY AIR-CONDITIONED.

The Honker

RESERVATIONS: glencourt 9-3424
"of course"

- Continental Cuisine
- Select Spirits
- Beautiful Banquet Facilities
- Unique Wine Cellar for Parties with the "VELVET TOUCH"

7590 girard . . "LA JOLLA FASHION CENTER" . . LA JOLLA

PAUL T. GALLEHER

REALTOR

Country Squire Courtyard

Rancho Santa Fe

LESTER K. RICE, ASSOCIATE
Rear Admiral, U. S. Navy (Ret.)

PL 6-1180

ARTHUR P. GAY
MASTER WATCHMAKER
WHERE SKILLED WORKMANSHIP
AND FAIR DEALING IS OUR
TRADEMARK

WATCH INSPECTOR

NEW LOCATIONS:

215 Fifteenth Street
DEL MAR
SK 5-9244

115 Acacia
Theatre Building
SK 5-2590

Flair

For Fashionable Elegance
or
Country Comfort

MEN'S & LADIES' GIFT ITEMS

1328 Hiway 101 — Del Mar
SK 5-2622

Church Plans Family Night

Members of the Village Community Presbyterian Church Sunday School and their parents and friends will gather in the Christian Education Building the evening of December 20 for the first annual Christmas Family Night. Mrs. Howard Bryant has accepted the Chairmanship of the dinner committee and will formulate plans for the pot luck dinner. Members of the Junior and Senior High Westminster Fellowship Groups will decorate the dining tables and arrange the seating. The children in the Junior Classes 1 and 2 are busy working on paper mosaics which they will use to fashion scenes of the Nativity for wall decorations. While children in the younger groups will work on decorations for the Christmas tree.



DISCUSSING preliminary plans for the Village Church Christmas Family Night are 1. to Mr. John Abels, Miss Ann Justice, Mrs. Ben R. Gardner, Mr. Richard Waldo, Mrs. Waldo and Mr. Gardner.

Following the dinner there will be an offering of White Gifts. These are donations of food, clothing and toys which are later distributed in areas where they will be appreciated. They are

all similarly wrapped in white paper, hence the name, White Gift Offering.

The Christmas program will be held in the Sanctuary. The Reverend Mr. Tolson will read the Christmas Story from the

Scriptures. The Junior Choir will sing Christmas hymns at appropriate intervals during the reading. Coordinator of the Junior Choir is Miss Ann Justice, Administrative Assistant to the Pastor.

The Village Church also invites all its members and friends to attend the Christmas Eve Midnight Service.

WANT TO GIVE
A UNIQUE
CHRISTMAS
GIFT?

MAKE
and
GIVE A
MOSIAC

COMPLETE
SUPPLIES

MARY & BILL
TAYLOR

del Marco

1331 HIGHWAY 101
DEL MAR, CALIFORNIA

Get Your
**SEASONAL
COLOGNES**
for that Special Delight at
**MERLE NORMAN
COSMETICS**

Free
Demonstrations
by Appointment
SK 5-1695
Theatre Arcade
Solana Beach

For the Right Line . . .
try the

SKYLINE HAIR DESIGN STUDIO

Marge Hyland, owner
1228 Highway 101
DEL MAR
SK 5-2323

Wishing Well Hotel

Rancho Santa Fe

Unique charm & atmosphere.

For Christmas and New Year—
Reservations, Please.

New Poolside Dining Room
"Don Quiote" Dining Room

Accommodations
Daily or Weekly
PL 6-1123
for Reservations

• Daily: for Breakfast,
Lunch & Dinner

AAA, Diners Club, Hiltons Carte Blanche, American Express

CREDITS

Art Gallery open to public.

MARSHALL'S SHOES

FOR ENTIRE FAMILY

SHOE REPAIR

All types of shoe repair,
including corrective work.

We convert street shoes
to golf shoes.

112 W. Plaza - SK 5-1776
SOLANA BEACH
Ask about our Club 13.

Benbough's

LA JOLLA

Fine Furniture and Interiors

7643 Girard Ave. — La Jolla — GL 4-0341
"Serving Southern California for over 53 Years"

Christmas For Others

Rancheros who like to share the joy of Christmas with others will gather at the Garden Club at 10:00 a.m. the morning of Dec. 14 for the annual Hospital Christmas Decorations Workshop. Mrs. John C. Rule is chairman this year, ably assisted by Mrs. Hardy H. Kent and Mrs. Edward A. Merrill, Jr. Workers are asked to bring a sandwich lunch and coffee will be served.

The making of wreaths and decorations by members of the Garden Club is not a new project. It was started during the war years at the request of the American Red Cross. At that time the members were asked to make 18 wreaths for the hospital at Camp Pendleton.

Following the war the project was floundering but only for a short time. Then Mrs. Sidney Nelson suggested to the Board of Directors of the Club that they might want to make the work a permanent part of the Club's activities. This met with

enthusiastic approval of the Club and has been a source of great pleasure to the members participating. They have made as many as 75 wreaths at a one day session.

All of the wreaths and swags are made from greenery obtained from the Ranch. The lion's share, however, comes through the generosity of the Inn by delaying the pruning of their juniper trees until just before the wreath making takes place. The ribbons, tie-ons, pods and other decorations are provided by the members.

For the past several years the wreath makers have contributed even more to someone else's Christmas by taking all the unused greens and decorations to the Children's Home in San Diego. There they assist the children in making wreaths and decorations for the halls and dormitories of the Home. The children get the lovely results of this work but the women who help them gain even more — the true spirit of Christmas.



EXPERIMENTING with ideas for the Wreathmaking at the Garden Club are Mmes. Hardy H. Kent, John C. Rule, Chairman of the Event, and Edward A. Merrill, Jr.

Norma's Gifts & Baskets

Complete line of unusual gifts and earrings.
Hawaiian
Colognes - Beach Hats - Sandals
Open daily and Sunday 'til dark.
266 N Hwy. 101 - Encinitas

TRADITIONAL or DRAMATICALLY DIFFERENT



FRANAUD FLOWERS
by Audrey Wagner
for Christmas gifts
Nite and decor Day
PL 3-3515 PL 3-2554
628 First St. - Encinitas

"Merry Christmas"
Encinitas Pet Shop
and Grooming Parlor
629 First St. - Hiway 101 - Encinitas
Phone PL 3-3744
AMPLE PARKING IN REAR

Solana Superior
TEL. SK 5-4742
Carpet & Furniture Cleaning
WALL TO WALL CARPET, AND FURNITURE CLEANED IN THE HOME
REPAIRING
EXPERT WORKMANSHIP
ALL WORK GUARANTEED
FREE ESTIMATES
20% Discount

FEATURING:—

- Dresses
- Sportswear
- Lingerie
- Accessories

CHRISTMAS!
The Season of Lovely Gift Giving From Fine Offerings At The

REGINA SHOPS

- Unique Gift Imports
- Complimentary Gift Wrapping

ENCINITAS
594 First St.

SOLANA BEACH
111 S. Acacia

DEL MAR
1226 Highway 101

Landscaping Plans Made For School

The Beautification Committee reports that work has begun on landscaping for the new RSF school building.

Mrs. Gifford Ewing, horticulturist and landscape design consultant for the Garden Club, has asked Harold A. Abrams, A.I.A. eminent La Jolla architect to assist. This she did at her own expense as she realized from past experience the enormity of the project, particularly the erosion problem facing them.

Mr. Abrams studies the building from the architectural standpoint suggesting size and height of planting best suited and Mrs. Ewing then chooses the plants that will conform to this plan.

Presently, bean straw and stable litter have been spread over the bare ground and disced in.



HOSTESS CHAIRMEN for the forthcoming Country Friends Jewel Show are l. to r. Mmes. La Motte Cohu, Dorothy Patton, Harry Wenz and Ann Witwer.

SCHOOL OF CLASSICAL

Ballet

director - teacher



Irene Isham Clark

Rancho Santa Fe Garden Club - Saturdays

PI 6-1554

GI 4-1635

Patronize the Advertisers

Flowers . . .

by *Adelaide*
La Jolla, California

Our Christmas Display has the most beautiful suggestions for your Holiday intentions. Includes: Imported Italian Christmas lights.

7766 GIRARD
GLEncourt 4-0146

HARRY PHILLIPS
ADELAIDE PHILLIPS

Friends to Show Jewels

As they have done for the past two years the Country Friends will again this year sponsor a Jewel Show featuring the creations of Joseph Weisager et Fils of Paris, France. The show dates are December 5, 6, 7, and 8, and the setting will be John Hogan's, La Jolla. Hours are from 10:00 a.m. to 5:00 p.m. daily.

Co-chairmen for the event are Mmes. La Motte Cohu, Harry Wenz, Dorothy Patton and Ann Witwer. Mrs. Patton, Hostess Chairman for Monday, Dec. 5, will draw her assistants from 'Friends' in the Oceanside-Carlsbad and Encinitas area.

Tuesday will find Mrs. Cohu and a representative group from Escondido and Vista assisting.

Representatives from Rancho Santa Fe, Del Mar and Solana Beach will aid Mrs. Wenz with the hostess duties on Wednesday.

La Jolla and San Diego members selected by Mrs. Witwer will share the hospitality responsibilities with her on Thursday.

Weisager et Fils original creations are treasured by many local residents. They also do wonderful things with old jewelry by resetting it in new and distinctive designs.

Country Friends benefit from the show by receiving a portion of the receipts from sales made during the event.

Mons. Serge Weisager, a son of the founder will be here for the duration of the exhibition.

DAKS

DABY'S
Rancho Santa Fe

"Make Your Memories Live Again"
— PAINTINGS IN OIL —
of Your

Favorite Snapshots
Work now on display at
1st National Bank, Encinitas.

JUNE HEALEY
PL 3-3879

Most Convenient
... TO THE RANCH

Del Mar
Liquor Store
1446 Hiway 101 SK 5-1733



This Is How the Ranch Voted

Results of the Nov. 8 General Election for National and State offices and issues of particular interest to Ranch residents are as follows:

ALISO PRECINCT	1	2	3	4
President				
Kennedy-Johnson (D)	26	22	29	40
Nixon-Lodge (R)	224	229	186	207
Congress 28th Dist.				
Utt (R)	215	220	184	198
Woods (D)	32	24	31	43
Assembly 77th Dist.				
Manion (R)	187	183	144	163
Hegland (D)	57	55	72	75
Prop. 1 Water				
Yes	191	184	171	182
No	69	71	40	60
Prop. 6 Golf Courses				
Yes	198	187	161	167
No	59	44	49	71
Prop. 15 Redistricting				
Yes	158	59	37	53
No	191	168	163	164
Oceanside Carlsbad JC				
Yes	53	79	50	59
No	171	130	134	129
Supervisor 5th Dist.				
Ashcraft	70	70	68	44
Bates	7	6	6	19
Bulen	12	13	12	24
Cozens	77	111	82	101
Knappe	9	1	3	9
Sutton	46	33	37	28

**JOHN COLE'S
Book & Craft Shop**
7871 Ivanhoe Ave.
LA JOLLA, CALIFORNIA
GLencourt 4-4766

Step up to —
**RANCHO SWIMMING
POOL MAINTENANCE**
The BEST in
Pool Maintenance
Complete Line of
Chemicals & Supplies
A personalized,
**LOCAL Service at
competitive prices.**
Phone **Michael Kirchhof**
PL 6-1427 (c/o Ola Johnson
Garden Service)

**ENCINITAS
STATIONERS**
650 SECOND ST.
Crane, Eaton & White &
Wyckoff Stationery
CARDS - GIFTS
Phone PL 3-1380
Z.N. Green Stamps
We Invite You to Stop In at
Our Bright, New Store

**ENCINITAS
PHARMACY**
587 - 1st
Encinitas - Calif.
24 Hr. Prescription Service
PL 3-5514

ANNOUNCING
International Sterling Silver
by
Anderson Jewelers
WATCH AND JEWELRY REPAIRING
PLateau 3-4777 517 Highway 101


**HOLIDAY BIRDS!
TURKEYS ***
FRESH, RAMONA, CLEANED and DRESSED
Ready for the Oven
* ATTENTION — Orders Taken Now — Phone PL 3-2211
Long Island Duckling
Geese -- Chickens
Kapherr's Frozen Food Center
312 N. Highway 101 - Encinitas
AMPLE PARKING IN REAR
Only U.S.D.A. Prime and Choice Beef
RENTAL LOCKERS

Visit the
Beautiful
**La Jolla
Candle Shop**
for all your
Christmas Candles
(HAND MADE)
12 ARCADE BLDG. Tel. GL 4-5142



Leucadia
VILLAGE FORGE
• Curtain-type fireplace
screens made to order:
Any size, any shape
In 13 decorator finishes
• Name signs to order
1646 N. Hiway 101 PL 3-1641

Patronize the Advertisers
**North Coast
ANSWERING SERVICE**
24-HOUR SERVICE
For Large or Small Business
PHONE
PL 3-2545
or
PL 3-5571



**WE answer when
YOU are out!**
GEORGE AND BESS RHOADES
55 BRIGGS ENCINITAS

Directors Meeting Report

Guard within yourself that treasure kindness. Know how to give without hesitation, how to lose without regret, how to acquire without meanness. — George Sand

Members of the Association Board met for their regular meeting on Friday, November 18. Present were all members of the Board of Directors and Association Members Raymond Gordon, Charles Chapin and Mrs. La Motte Cohu.

It was moved, seconded and carried that the Board of Directors write a letter to Raymond Gordon, thanking him for his services in supervising the construction of the new Tennis Courts.

It was unanimously voted to approve the petition of Fletcher-Martin Inc. et al to change the number of parcels of Lot 3 and Portion of Lots 2 and 11, Block 24, Map 1742, dated June 12, 1960 from 11 to 13.

The invoices for the construction if the new Tennis Courts, as submitted by Mr. Gordon were approved.

The Board of Directors of the Association and the Art Jury will have a joint meeting on Friday, December 2, 1960 for the purpose of correlating ideas.

It was moved, seconded and carried that the application of Lloyd B. Farmer for Subdivision of Portion of Lot 3, Block 22, Map 1742, be not approved.

Vice-President Dewey abstained from voting.

The application of A. C. Busche, Jr., for Lot Re-alignment between Lots 16, 17 and 18, Map 2057, was not approved.

The application of John Truog for Subdivision of Portion of Lot 14, Block 32, Map 1742, was not approved. Vice-President Dewey abstained from voting.

The application of Mesa del Rio for Subdivision of Portion of Block J, Map 1742, was not approved. Messrs. Chapin and Mme. Cohu addressed the Board on this matter.

Approval was granted to the application of Fred Sproul, Jr. for Subdivision of Portion of Lot 2, Block 6, Map 1742. Vice-President Dewey abstained from voting.

The Board deferred action on the application of E. C. French for Subdivision of Portion of Lot 2, Block 33, Map 1742, pending further study. The Board also deferred action on the application of 'Bill and Emma's Restaurant' for a Sign permit, pending correction of various factors

relative to said property. The Board appointed Secretary Smart to act as a Teller on November 29, 1960, and further directed Secretary Smart to appoint two other Tellers to serve on this date.

Secretary Smart was directed to secure a bid from Architect Jung for the remodeling of the 'Old School Building.'

Messrs. Gordon presented a Progress Report on the Tennis Court Construction to the Board.

The following letters were read and ordered dispersed to proper channels:

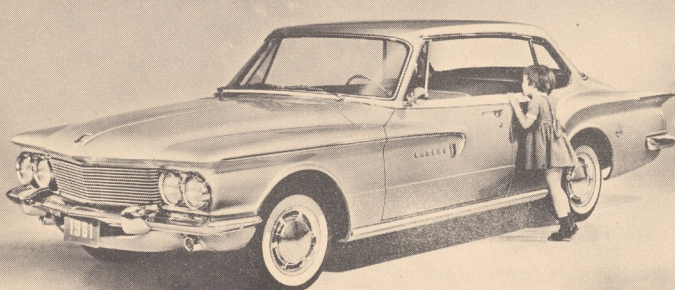
Messrs. Keenan letter of thanks to President Jenkins relative to the 'Welcome' letter sent to Messrs. Keenan as a new member of the Association. Board of Supervisors, San Diego County acknowledgement of letter renaming of street at Fire Station "El Fuego."

Attorney Clayton reported on and conferred with the Board with reference to legal matters of the Association.

Secretary Smart presented the Financial Statement for the month of October.

There being no further business the meeting was adjourned at 2:48 p.m.

**HERITAGE
HOUSE
ANTIQUES**
For your gift:
Wonderful decorative accessories. Antiques from the world over. Fascinating ornaments in time worn metals. In fact, so many wonderful things priced for exceptional values.
• Valuations on antique objects for insurance or probate.
ARLENE S. WHALEN
3690 SIXTH AVE.
CY 7-3137
SAN DIEGO

NEW DODGE COMPACT 1961 LANCER —
Unibody construction for greater strength and roominess.

HIDDEN VALLEY CHRYSLER DODGE
DODGE DARTS and TRUCKS
221 N. Broadway Escondido SHerwood 5-5311

INTERIOR DECORATIVE ACCESSORIES
CAMELLIA HOUSE ANTIQUES
SPECIALIZING IN RARE FRENCH OBJECTS
EDNA C. PROULX
163 La Costa Drive Leucadia PL 3-1826

Patronize the Advertisers
C. C. Randolph, Jr.
REAL ESTATE
HOMES • LOTS • ACREAGE
INSURANCE
1140 Highway 101, Del Mar SKyline 5-4849 - 4829
Residence: PLaza 6-1757

**CRUSHED
COLORED
ROCK**
over 15 colors to choose from.
**BUNYARD'S
MASONRY SUPPLY**
551 Vulcan, Encinitas
PL 3-1164

**ENCINITAS
CABINET
SHOP**
859 HIGHWAY 101
PLateau 3-5346

BULK RATE
U. S. POSTAGE
PAID
Rancho Santa Fe,
California
Permit No. 15

CHURCHILL & CASSOU HARDWARE
• Dutch Boy Paints • Frigidaire Appliances
140 E. Grand ESCONDIDO SH 5-2441
Where Quality Tells and Service Sells

Mrs. Shirley Keeth
Rancho Santa Fe
Calif.

THE CORAL REEF GIFT SHOP
FOR CHRISTMAS GIFTS
With newly arrived wonderful imports for gifts.
CHRISTMAS or ANYTIME — IMPORTED or DOMESTIC
You will find our GREETING CARD LINE unusual.
Your Hosts: FRED & BETH SALSBUURY
1327 Highway 101 • Del Mar • SK 5-4272

THE TRADIN' POST

ESCONDIDO'S OWN, FINE
LOCALLY PRODUCED WINE
Sweet and Table
Available Exclusively at
FERRARA'S WINERY
1120 West 15th

Rancho Hardware
in the Village Center
Tools for your
Gardening
Also Barbecue Supplies
PL 6-1702

ANNOUNCING
International Sterling Silver
by
Anderson Jewelers
WATCH AND JEWELRY REPAIRING
PLateau 3-4777 517 Highway 101

Gailey's Photo Supply
"Escondido's Most
Complete"
230 E. Grand
Phone SH 5-7823 - Escondido

MacPherson's
Men's and Women's
Quality Clothing
515 First Street
Encinitas
PL 3-1953

HOMES ACREAGE HOMESITES
Willis M. Allen Co.
of
RANCHO SANTA FE
PLaza 6-1544

For any make NEW or good
used car, call **BILL APPLE.**
A & A MOTORS
QUALITY CARS
PL 3-1702
204 N. Hwy. 101 Encinitas

The Finest in Beauty Care
for the Discriminating Woman
SKyline 5-1549
**ARMOND'S
BEAUTY SALON**
ARMOND B. CARPENTER JR.
110 W. Plaza
Solana Beach, Calif.
Specialists in Hair Shaping.

HOME CALL \$4.95 SK 5-1653
135 S. HWY. 101
SOLANA BEACH, CALIF.
FIDELITY RADIO TELEVISION SERVICE
(BUCK COWLEY) OWNER-MANAGER
PERSONALIZED SERVICE
RCA SALES SERVICE
COLOR - BLACK & WHITE ALL TV, RADIO, HI-FI,
STEREO - RADIO ANTENNAS, CUSTOM
Large Record Selection ELECTRONICS
45 RPM - Stereo - HI-FI FOREIGN or DOMESTIC

Ashley's
Rancho Santa Fe Market
Watch for our Weekly
Handbills

**CULLIGAN Soft Water
SERVICE**
for BETTER LIVING
111 So. Cedros P.O. Box 278
SOLANA BEACH
Phone SK 5-1022

Swimming Pool Supplies
CHEMICALS — AQUA FINE PURIFIERS
LADDERS — DIVING BOARDS
HEATERS — FILTERS
COMPLETE IRRIGATION NEEDS
PIPE — SPRINKLERS — VALVES
PEERLESS & JACUZZI PUMPS
WEBB PUMP & SUPPLY
ESCONDIDO SH 5-0511

1497.002.065 P-583