



# ASSOCIATION BULLETIN

PUBLISHED BY THE RANCHO SANTA FE ASSOCIATION FOR THE BENEFIT OF ITS MEMBERS

Volume 3, Number 4

Rancho Santa Fe, California

April 1956

## Work Continues On Clubhouse

Remodeling of the golf course clubhouse next week goes into the third and final month of construction activity and work was again called on schedule by contractor, Howard Steinwintner.

Adobe masonry on the outside of the building is now completed, installation of "wormy" chestnut paneling in the dining room and bar is nearly completed; and, tiling of the men's showers and washrooms is also finished. Painters are now finishing the men's section, and tiling is now being done in the women's washrooms, Steinwintner said.

Unless unforeseen complications hold up the next month's activity, the building will be ready for service about June 1, he said.

Plans for a \$5000 automatic sprinkler system originally budgeted for the building, have been dropped, Board member C. K. Whittaker told the Board April 20. Cost of installing the system was estimated at \$3500 to meet specifications of fire insurance underwriters. Combined cost of the sprinkler system and installation would have been amortized in 8½ years, Whittaker said but the committee decided that circumstances did not warrant the additional expense.

Instead, the roof will be installed with about fifteen 35-pound pressure, sprinkler heads.

The Board approved a re-roofing job on the clubhouse. Workers began installation of the heavy shakes over 30-pound felt "tar paper" last week.

Directors also gave the building committee a "green light" to conduct negotiations for future management and operation of the newly-renovated clubhouse. Seven organizations and individuals have already applied for the management position, Whittaker said.

## Bulletin Decision To Be Made In May

A decision by Association directors of the future of the Association Bulletin will be made in May.

The decision will be based on membership response to the Bulletin opinion poll conducted through April. Association members were advised last month in the Bulletin to vote for continuance in present form, resumption of mimeographed form, or discontinuance of the publication by May 1.

The Bulletin was started on a trial basis in September, 1954 and was first printed in a mimeographed, newsletter style. Since May, 1955, it has appeared in its present form.

## Nominating Committee Told For June Election

A three-member nominating committee was appointed April 20 by Association directors for the June 11 Board of Director's election.

Named to the committee were Stanford Tompkins, chairman; Carl Croft and Mrs. William States Lee, Jr.

Tompkins is a former Board member (1953-55) who served as Board president during his latter year of tenure. Carl Croft is presently chairman of the Association greens committee. Mrs. Lee is an interior decorator in a village studio.

Three directors will be selected in the June election. They will take over the expired two-year terms currently held by Adm. F. X. Gyax, W. R. Fawcett and Edmond Sullivan.

The committee's five-man slate of nominations must be posted by May 12, 30 days prior to the election. In alternate years, when four directors are elected, six nominations are made.

Covenant property owners may (Continued on page 3)

## Over 200 Replies Received On Opinion Poll for RFD

More than 200 replies have been returned by Ranch residents on the Rural Free Delivery opinion poll. The tabulation, Wednesday, April 25, indicated that 150 residents were in favor of a postal department study of local home mail delivery. Sixty-eight ballots were returned with a "No" vote for the proposed study.

The opinion poll was conducted by the Rancho Santa Fe Association after Haskell Strawn, local postmaster, was notified by the postal department that a petition indicating public opinion would be necessary before a study could be made.

The postmaster said he made the initial request on the basis of frequent requests for mail-delivery service by local residents; also, Association directors in February indicated they would favor such a study, providing any delivery that might be established would originate in the local post office.

Strawn said he would send the results of the petition to the postal department within the next

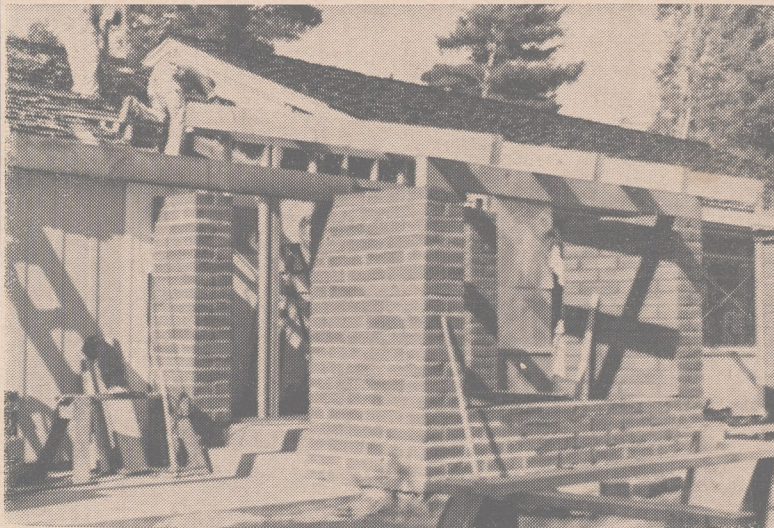
week or ten days, after most ballots have been returned.

He said the department would then study the petition to determine if such a study would be feasible. If it decides in favor of the study, an inspector will be sent to Rancho Santa Fe. The postal inspector will probably conduct his own opinion poll by interview and contact with local residents. He also studies mileage, accessibility and other problems.

When his study is completed, he makes a recommendation to the postal department favoring or opposing the delivery service. His recommendations are usually followed, Strawn said.

Home delivery would not interfere with the present post office box situation. However, home deliveries are made only once daily from Monday to Friday, whereas postal box patrons receive distribution service twice daily and on Saturdays.

Some objections to the proposed service have been based on the roadside mail boxes that would be required.



"ON SCHEDULE"—Remodeling of the golf course clubhouse is slated to be finished by June 1. Above, laborers work on the adobe-brick entry to the building.

BOARD MEETING: APRIL 6

# Preliminary Discussions Held On Hotel License Request

Preliminary discussions were held April 6 by Association directors on the request of Mr. and Mrs. L. Lawrence Larrea for an on-sale liquor license at their Wishing Well Hotel. The hotel, formerly call El Ranchito, is located in Map 2089 along Lago Lindo road.

The discussion was preceded by a letter from Larrea in which he outlined plans for development of the hotel facilities. (Plans for an addition to an existing building and for a new building are now being considered by the Art Jury.)

The letter indicated that a license would be desirous "to give the best possible hotel accommodations and services to our guests...to be an asset to our community, our neighbors and ourselves...to complete our hotel facilities and services." The letter continued that the hotel would continue to operate in "the most dignified manner in keeping with the best interests of our community."

Larrea, who was present at the meeting, said the completed project would contain complete hotel facilities, and could in no way be considered a motel or roadhouse-type operation. He also said engineers are now studying the property to determine any potential needs for increased sewer facilities. The property is not presently connected with the Sanitation District.

Association attorney Howard Clayton pointed out that according to the Covenant, any liquor license granted by the Board can be "revoked for cause." Licenses are granted on an annual basis.

Board members' comments included the following:

Edmond Sullivan— "...this is a piece of commercial property. The greatest guarantee of no trouble is his (Larrea's) own interests."

W. O. Fleetwood — "... there is a problem because it has not always been operated properly, but rooms and a liquor license are needed for effective operation."

W. R. Fawcett— "... our (the Board's) interest is that of the community's and not in the success of a commercial operation."

F. X. Gygax—"... there is a question in my mind whether or not a town of this size needs more than two liquor licenses. ..." (The two establishments presently licensed to sell liquor are The Inn and the Association clubhouse.)

The Board deferred action in the absence of a full Board representation, and until neighboring property owners could be contacted for their opinions. (The Association office later contacted 63 property owners for an opinion—most of the owners in Map 2089, and those in Block 11 whose property fronts on Lago Lindo.)

The Board resumed discussions originally held in February on the possibility of establishing home-mail delivery in Rancho Santa Fe. Directors had earlier favored a postal department study on the feasibility of establishing such service with the provision that it would originate at the local post office.

Raymond Gordon, present at the latter meeting, again reminded the Board of this possibility of home delivery. He asked the Board to poll local residents on the desirability of requesting a postal department study. The Board then instructed the Association office to draw up a return post card to be sent to Ranch residents for their opinions.

Manager W. A. Smart's report indicated that March greens fees of \$10,914 were up \$1605 from March, 1955 He also said that

expenses of operating the refreshment stand during March were \$368.07 less than revenue received.

The Board approved three requests to keep animals. The requests were from:

Clara I. Carpenter, two horses on 2.10 acres in Portion of Lots 1 and 3, Block 44, facing Puerto Del Sol.

Ronald Riley, three horses and one donkey in Portion of Lot 7, Block 10, subject to the Art Jury condition of a three-rail fence spaced with posts 10 feet apart.

Nell Wilks, two horses in Portion of Lot 8, Block 33, subject to the condition that enclosing fences be constructed of material strong enough to contain the animals.

Captain George Ravenscroft requested at the meeting, and also by letter, that service yard enclosures be high enough to block clothes-drying lines and racks. Directors then requested the Art Jury to check future plans for height and location of lines.

In other business the Board:

Directed Secretary Smart to recommend to the county sheriff's department the addition of another prowler car for use in the San Dieguito area.

Directed the secretary to request the passenger traffic manager of the Santa Fe Railway (with a copy to the Public Utilities Commission) for continuance of the present four-car commuter service between San Diego and Los Angeles, rather than revert to the two-car commuter in use at the time of a recent disastrous train wreck.

Authorized the secretary to order a new printing of the Association by-laws incorporating changes adopted since the last printing.

Heard a report from Board member W. M. Vandersluis on the recent county traffic study of village center parking. (See page 10.)

The terrain at Rancho Santa Fe consists of undulating mesas, varying from 50 to 350 feet above sea level, frequently broken by numerous barrancas and arroyos. Erosion of variegated soils, and the presence of abundant native shrubbery, provide picturesque landscapes.

Acreage

Residences

Building Sites

Investment Properties

In Rancho Santa Fe And Adjoining Areas

NELSON and CHAPIN

Montgomery L. Hart, Associate

PASEO DELICIAS

Information Bulletin

of the

Rancho Santa Fe Association  
Rancho Santa Fe, California

Marilyn Kamprath, Editor

Board of Directors—Adm. Felix X. Gygax, president; W. O. Fleetwood, vice president; H. F. Bakewell, W. R. Fawcett, Edmond Sullivan, W. M. Vandersluis, C. K. Whittaker; W. A. Smart manager.



DRIVING RANGE—The 400-yard practice tee was opened for business April 1. The range is operated by pro shop owner-manager, Hank Barger. Above, left to right, assistant pro, Jim Boyle looks on as Mr. and Mrs. Edward Dobroth of Rancho Santa Fe, practice tee shots. Golf pro, Hank Barger helps A. Unger of Escondido to line up his next shot.

## Playing Privileges And Greens Fees Show Gains

Both greens fees and playing privileges showed considerable gains in each of the first three months of 1956 over the previous year's figures.

A breakdown of the figures follows:

GREENS FEES	1955	1956
January	\$4918.00	\$5855.00
February	\$6259.00	\$7531.00
March	\$7734.50	\$8666.00
PLAYING PRIVILEGES	1955	1956
January	\$1439.50	\$2111.50
February	\$1564.75	\$2199.50
March	\$1573.75	\$2248.00
TOTALS	1955	1956
Green Fees	\$18,911.50	\$22,052.00
Playing Privileges	\$4,578.00	\$6,559.00
Totals	\$23,489.50	\$28,611.00

The number of Association members holding playing privileges during the first quarter increased from 40 in 1955 to 56 this year. Playing privileges of non-

Association members also increased from 79 in 1955 to 106 this year.

Golf course income, which is computed on a fiscal year basis, is up over \$2000 for the nine month period ending March 31. On that date last year, combined greens fees and playing privileges amounted to \$79,002. This year's total is \$81,379.50.

## Nominations . . .

(Continued from page 1) also add to the nomination slate by petition. Nominating petitions must be signed by 10 Association members and filed not less than 10 days (June 1) before the election. All candidates must be resident Association members.

Holdover Association directors are H. F. Bakewell, Wm. O. Fleetwood, W. M. Vandersluis and C. K. Whittaker. Their terms expire in 1957.

New directors will take office June 15.

In spite of inclement weather, Scouts report that nearly 100 persons attended the Easter Sunrise services at the Paul Lloyd ranch.

## NOW IS THE TIME TO REVIEW YOUR SECURITY HOLDINGS

The changing world and national picture has altered the income and capital appreciation prospects for many securities.

Have you examined your holdings recently? May we suggest that you allow E. F. Hutton & Company's Investors' Service Department to review your portfolio? Simply complete and forward the attached coupon requesting a copy of

the "Confidential Investment Inventory" to us. We will carefully evaluate your holdings in the light of present business conditions . . . without obligation, of course.

This is but one of Hutton's many services to investors. We invite you to visit our San Diego office and inspect our facilities, including our large electric quotation board.

## E. F. HUTTON & COMPANY



MEMBERS NEW YORK STOCK EXCHANGE AND OTHER LEADING SECURITY AND COMMODITY EXCHANGES

1066 Fourth Avenue, San Diego • BElmont 2-3101  
FROM RANCHO SANTA FE Call ZEnith 2310

Los Angeles, New York, San Francisco, Chicago, Dallas, Kansas City

Hear "Business News" KMPC 8:15 A.M. Mon.-Sat.

E. F. HUTTON & COMPANY  
1066 Fourth Avenue, San Diego

Please send me a copy of your "Confidential Investment Inventory."

NAME \_\_\_\_\_

STREET \_\_\_\_\_

CITY \_\_\_\_\_

## Mrs. Vernon Burns Named President

Mrs. Vernon Burns has been elected president of the Rancho Santa Fe PTA for the 1956-57 school year. Mrs. Burns, who was P-TA vice president this year, will replace Mrs. Chester Root.

The new president and other new officers were elected April 12 from a nomination slate prepared by Mrs. L. K. Pratt, chairman, Mrs. William Walker and Mrs. L. E. Kelley.

Other newly-elected officers who will serve on the Board with Mrs. Burns are Mrs. Russell Fellows, vice president; Mrs. George Ravenscroft, treasurer; Mrs. Roger Ketron, corresponding secretary; Mrs. Ralph Hanks, recording secretary.

Officers will be installed May 10 at 3:15 p. m. at the school. Mrs. W. R. Fawcett, P-TA president during the 1954-55 school year, will be presented with the past-president's pin. Hostesses for this meeting include Mrs. Vernon Fidero and Mrs. John Hoskins.

## P-TA Nets \$900 For School Needs

Approximately \$900, realized this year from P-TA fund-raising events, will be donated to the school to furnish the teachers' room and the kitchen in the new school building.

The April 13 bake sale netted the P-TA nearly 80 dollars. Winner of a cake donated by Miss Mabel Hilditch was Mrs. Raymond Gordon. Homemade bread baked by Mrs. Haskell Strawn was awarded to Mrs. Lloyd Mills. Chairman of the bake sale was Mrs. Warren R. Devine. Poster art work was done by Mrs. Ralph Lincoln.

At the April 12 P-TA meeting, the three Ranch Brownie troops were presented with flags from the group. Receiving the flags for each troop were Margaret Tunstall, fourth grade; Susan Kelley, third grade; Michelle Pratt, second grade.

The P-TA also announces that it will again serve cookies and punch at the Garden Club flower show.

The landscaping project, started last November by the P-TA, was recently augmented with the gift of two juniper trees donated by Mr. and Mrs. Minton Cronk-hite.

## End-of-School Program Planned

Plans are now being formulated by the P-TA for the June closing exercises of the local elementary school.

Traditionally the program has been started with a "Pet Parade" in which most school children have participated, followed by an outdoor barbecue and graduation ceremonies.

Because of the great increase in enrollment, the emphasis this year will be placed on the graduation exercises. The pet parade will probably be concentrated around the school building.

As part of the graduation program, the P-TA will present pins to the "all-around best" boy and girl sixth graders.

## What's Doing on The Ranch . . . . .

**Garden Club**—Annual Flower Show, "Holiday Tours", April 28 and 29.

\*\*\*  
**Los Ancianos**—May 2, 6:30 p. m. The Meetin' House, The Inn; David Hellyer, speaker.

\*\*\*  
**Board of Directors**—May 4, 9:30 a. m., Association office, (open.)

\*\*\*  
**Art Jury**—May 7, 9 a. m., Association office (closed).

\*\*\*  
**School Board**—May 7, 8 p. m., Rancho Santa Fe School.

\*\*\*  
**P-TA**—Installation of 56-57 officers, May 10, 3:15 p. m. Rancho Santa Fe School.

**Garden Club**—Luncheon, Election of '56-'57 officers, May 8, one p. m.

\*\*\*  
**Irrigation District**—May 14, 9 a. m., Board of Directors, District office.

\*\*\*  
**Country Friends**—Quarterly membership luncheon, The Meetin' House, The Inn, May 17, one p. m.

\*\*\*  
**Riding Club**—May 17, 8 p. m. Board of Directors.

\*\*\*  
**Board of Directors**—May 18 Association office, (open.)

\*\*\*  
**Book Club**—Annual meeting, election of officers, home of Mrs. R. M. Clotfelter, May 29, 12:30 p. m.



For reservations telephone PLaza 6-1131

R. M. Clotfelter, Manager

## FROM HOUSES TO FENCES

# Art Jury Kept Busy Considering "Works of Art"

An Art Jury agenda usually contains requests ranging from such major requests as house plans and subdivisions, to relatively minor requests for approval of signs and fences. In between, there are such items as horse corrals, guest houses, alterations, additions, exterior colors, carports, etc.

The April 2 Art Jury agenda included many of these—eight residence plans, four corrals, two subdivision requests, four exterior colors and plans for hotel buildings.

The powers and establishment of this body, appointed by the Board of Directors, are outlined in the Protective Covenant. Paragraphs in the Covenant relating to the work of the Art Jury, are outlined below.

One of the first mentions of the Art Jury in the Covenant is in Paragraph four, which gives it, along with the Association, "the right, and power as in this Covenant provided to interpret and enforce, the restrictions, conditions, covenants, reservations, liens and charges imposed by the provisions of this covenant. . ."

**Keeping of animals**—Paragraph five gives the Art Jury jurisdiction over the nature of housing of animals subject to other Covenant provisions relative to major and minor construction.

**Subdivisions**—A subdivision request is first studied by the Art Jury before it goes to the Board of Directors for final decision. The Jury visits the site, considers such things as setbacks, frontage, and size of the proposed lots, and then sends its "written advice" to the Board. (Paragraph 46)

**Plans and Improvements**—Before any building can be erected on Covenant property, plans and specifications must be submitted to the Association office. They are given a preliminary check for cost limitations, and other Covenant requirements before being submitted to the Art Jury for "examination, correction, approval, or rejection. ." (Paragraph 47)

**Major and Minor Construction**—Property owners are allowed to proceed with what they think is minor construction without sub-

mitting detailed plans for Art Jury approval. Swimming pools and tennis courts are considered major constructions. (Paragraph 48.) Property owners are urged to contact the Art Jury if there is any doubt in their minds whether or not any proposed improvement is of major or minor construction.

**Colors**—Paragraph 50 requires all property owners to submit exterior color samples before proceeding with the work. Site gading maps must be furnished on request. (Paragraph 51.)

**Works of Art**—All visible works of art and improvements must be submitted for Art Jury approval. Specifically listed as works of art in Paragraph 53, are paintings, mural decorations, stained glass, bas-reliefs, tablets, sculptures, monuments, fountains, arches, entrance gateways, or other structures of permanent character intended for ornament or commemoration.

Other Covenant paragraphs specifically referring to the Art Jury include 55 to 59, referring to membership; 60, referring to funds of the group; 61 to 63, which outline procedure for keeping reports of the Art Jury. Paragraphs 64 to 68 extensively outline the procedures for appeal of an Art Jury decision.

**Removal from office**—An Art Jury member may be removed from office for two reasons—malfeasance in office, and absence from meetings for a period in excess of 60 days without written approval of the Association president. However, removal from office requires a four fifths affirmative vote of Association directors, after a public hearing which has been preceded by a 15-day notice to the parties concerned. (Paragraph 69.)

These paragraphs only highlight the work of the Art Jury. Mention of it is found throughout the pages of the Covenant.

For more than 60 years before Juan Maria Osuna took possession in 1836 of the land grant which comprises Rancho Santa Fe, the area had been a stopping point for the mission fathers who ministered to about 15 families of their "best Indians."

## Cato Declines Commissioner Job

Carl Cato, appointed last month to fill a vacancy on the Fire Protection District Board of Commissioners did not accept the position. He had been appointed by the County Board of Supervisors on the strength of recommendations made by the Association Board and by the fire commissioners to fill the expired term of Richard Blackledge.

Blackledge has now agreed to continue on the Board and an appointment is expected sometime in May.

When no candidates file for election to the fire commissioner board, county supervisors are empowered to fill the vacancy by appointment.

## Changes Noted For Animal Permits

Several requests to keep animals are processed each month at the Association office and members are again reminded of the change in procedure adopted earlier this year by the Board of Directors.

Before the request is studied by the Board, the Art Jury must approve a plot plan showing site and size of the corral and building, if any, and a detailed drawing of the proposed fence indicating style and material to be used.

After these items have been cleared, the request goes to the Board. Formerly permits were issued by the Board and then went to the Art Jury for design approval. As before, surrounding property owners are given a 15-day notice to file approvals or protests before the Board decides on a permit.

## Ass'n Director Nominations Are Made

Five candidates in the June 11 Association Board of Directors election were announced April 26, by the Association nominating committee.

The candidates are R. Benson Fisher, Raymond Griset, Dr. Herbert Willy Meyer, Ward A. Miller, and Arthur G. Thorne. Three candidates will be elected to fill the expiring terms of Adm. F. X. Gygax, W. R. Fawcett, and Edmond Sullivan.

(Additional details on the nominating committee and forthcoming director election are found on pages one and three.)

## Trustee Candidates Are Mrs. L. Walls And Mrs. Van Sicklen

Mrs. Lester Walls, incumbent, and Mrs. Fred Van Sicklen are candidates in the forthcoming election for a post on the Rancho Santa Fe Board of Trustees. The election will be held May 18. Polls will be located at the school building.

Both candidates were sponsored by members of the P-TA. Remaining on the school board are Russell Fellows, president, and Hubert Brooke.

In the same election, Ranch voters will help choose the trustees to fill the five-member San Dieguito High School Board of Trustees. Four candidates have filed. They are Andrew J. Blecha and John P. Kirby, incumbents, both from Encinitas; Mrs. Wilma C. Heinzelman of Leucadia and John R. Shannon of Del Mar.

## FOR OUTDOOR LIVING

You Need . . . .

Spring and Summer Garden Color

See Us For . . . .

Hardy Perennials in Bud and Bloom

WILLIAMS & MACPHERSON

COMPLETE GARDEN STORE

955 Highway 101 Encinitas PLateau 3-1555

APRIL 28 AND 29

# "Holiday Tours," Flower Show Theme, Takes Guests on Trip

Visitors at the April 28 and 29 Garden Club flower show will this year take a trip around the world. Flower arrangements will be centered around the theme "Holiday Tours." Doors open at one p. m. Saturday, and the show will be continued Sunday from 11 a. m. to 5 p. m. Chairman of the flower show is Mrs. P. W. Pichel, assisted by Mrs. Sydney Nelson.

Four arrangements are included in Section A, "Destination;" Paris in the Spring by Mrs. Charles Ames Jr.; Spain, Mrs. R. M. Clotfelter; Hawaii, Mrs.

## Interest Shown In Garden Section

Great interest was shown in the newly-formed garden section of the Garden Club, when about 30 interested members gathered at the Garden Club April 12 for the first meeting. Mrs. Charles Ames, Jr. is serving as the temporary chairman of the group.

Lively discussion and questions followed Mrs. Sydney Nelson's demonstration-talk on flower arrangements. Special reference was made to the flower show classes open to members in this year's flower show. Mrs. Nelson illustrated her talk with over a dozen floral arrangements and displays. Mrs. Gifford Ewing also brought sample flowers and arrangements from her gardens.

The garden section will devote concentrated study to horticultural subjects, flower arrangements and flower shows, Mrs. Ames said. Because of the varied interests of the large Garden Club, members earlier this year felt the time had come to specialize. The garden section is the first such specialized section to be formed and will work within the Garden Club. Others are now in the planning stage.

Members who devote their time to the garden section will not only try and serve their own interests but those of the community as a whole. They will aim at organizing civic beautification and stimulating local interest in gardening, Mrs. Ames said.

Harry E. Wenz; Caribbean Cruise, Mrs. Alwin Trepte.

"Conducted Tours" keynotes Section B. Places and arrangements are: The Orient, Mrs. C. Wendell Jones; British Isles, Mrs. Montgomery Hart and Mrs. Edward Cheyney; Norway, Mrs. Neil J. Randol; Fabulous Gift Shops, James Young; South Pacific, Mrs. Pichel; Germany, Mrs. R. Victor Venberg.

Entries in "Pacific Highways" are under the direction of Mrs. Nelson. "To the other Side of the Mountain," directed by Mrs. John Rule, will include arrangements using rocks, stone and other dry materials.

Mrs. Pichel is chairman of entries in the Informal Buffet tables section. The decorations include: United Nations, Mrs. Fred B. Van Sicklen; South of the Border, Mrs. David Hellyer; North of the Border, Mrs. Charles Chapin; The Old South, Mrs. Robert Patnaude, The De Anza Trail, Mrs. E. H. Schriefer; Sun Valley Holiday, Mrs. Hubert Brooke, Italian Holiday, Mrs. Russell H. Millar.

In the "Collector's Corner," Mrs. Edward N. Dacus is chairman. "At Home for the Rancho Roses" is chairmanned by Mrs. W. R. Fawcett. Junior arrangements to be shown at the school house include sections titled Gift Gardens, Peter Pan Originals, Vacation Souvenirs, and Flower Arrangements. Mrs. Randol is chairman of children's entries.

## Country Friends Slate Meeting

The Country Friends have scheduled a general membership luncheon May 17 at The Meetin' House of The Inn. Disbursement of funds for charitable purposes will be announced after that meeting, according to Mrs. La Motte Cohu.

The group is also in need of stock to be sold at its Traders Shop in the Country Squire Courtyard. Merchandise may be donated to the Country Friends or sold in the shop on consignment. Heirlooms are especially desirable, according to Mrs. Howard Otten, who is in charge of the shop's stock. Proceeds from the shop are given to charity.

## Book Club To End Club Year

The Rancho Santa Fe Book Club will close its club year next month, May 29, with a luncheon, annual meeting, election of officers, program and entertainment.

It is traditional for the Book Club's outgoing officers to host this last meeting of the club year. The luncheon-meeting will be held in the home of Mrs. R. M. Clotfelter, president. Assisting hostesses will be Mrs. D. M. Bakewell, vice president; Mrs. Emery O. Peterson, secretary; Mrs. George Megrew, treasurer.

Officers will be elected from a slate prepared by a nominating committee. The committee was announced at the April 24 meeting.

Mrs. Henry Sanger was elected in mid-year to fill the Book Club's membership roll which is limited to twenty-five.



FROM 1927 TO 1956—The above pictures highlight some of the events in the traditional flower shows in Rancho Santa Fe. Dr. A. R. Sprague, top, whose gladiola blooms, seedlings and new varieties were the incentive behind the first displays, is pictured with one of his seedlings. Would you believe it? The middle picture shows Paseo Delicias on Flower Show day back in 1927, when 1500 flocked to the show. In the lower picture are, left to right, Mrs. P. W. Pichel, flower show chairman, Mrs. Charles Ames, garden section chairman, and Mrs. Sydney Nelson, assistant show chairman. The top two photographs are from Mrs. Nelson's extensive collection of historic Rancho Santa Fe photographs.

## ROBERTSON HONORED

# "Grand Opening" of Riding Club Stables Attracts 150

Approximately 150 people flocked to the "Grand Opening" of the Riding Club's recently-completed stables and trainers' quarters, Sunday, April 15. The celebration also honored the club's founder John Robertson.

A portrait of Robertson, who has been a Ranch resident for nearly 30 years, was presented to the Riding Club and will hang in the office until a separate clubhouse is built. The portrait was painted by W. W. Tackett whose brother, Marvin Tackett, is another local resident.

Mr. and Mrs. Bob Rice, long associated in county equestrian circles, have been retained as resident trainers at the stables. The building includes complete modern facilities for teaching of all types of riders, and training and boarding of all kinds of horses.

The compact stables contain a 10-stall barn, tack room, feed room, office, utility room, men's and women's rest rooms, schooling room and caretaker's quarters.

Outside, Riding Club volunteers have been busy constructing paddocks. Ten are planned. Volunteer crews have also spent recent weekends painting fences, installing pipe lines and building corrals.

All of this activity and the opening of the stables climaxed over 11 years of work done by Riding Club founder John Robertson, charter members, and others who have joined since its 1945 inception.

It was just 11 years ago when Robertson staged a party at the clubhouse restaurant. Guests—all horsemen or horse lovers—thought they were celebrating his birthday. They did, and probably gave him the best birthday present of all, when they chorused unanimous approval to his suggestion that they form a riding club.

Since that time, Riding Club activities have certainly become an integral part of community life in Rancho Santa Fe. Over 100 belong to the club; junior riders play a vital part; the annual horse shows attract horsemen from throughout and beyond the county; it has revived and maintained interest in polo; the bridle trails, secured through

the untiring work of Mrs. Potter Bowles and others, are considered unmatched in the county.

All this, and more, resulting from one birthday dinner. Justly proud, Robertson has said, "We have just started as a great Riding Club."

Bob Rice is a third generation horse trainer. His father trained thoroughbreds, and Rice, as a small boy, became a jockey. Riding until he was too heavy, he graduated to steeple-chasing. He has taught riders and trained horses in San Diego county since 1938, at La Jolla, Santee and Mission Valley.

Here at the Ranch he will take charge of all training of horses and teaching of the advanced riding classes. His wife, Louise, will teach beginning and intermediate riders. They will teach park, hunt, and western styles of riding.

## Garden Club Sets May 8 Election

New Garden Club officers for the 1956-57 club year will be selected at a luncheon meeting in the clubrooms on El Tordo road, May 8 at one p. m.

The new officers will be selected from a slate to be presented by Mrs. Francis Patton, chairman, Mrs. Alfred Hill and Mrs. William Walker. Mary Waterstreet, a professional impersonator, will entertain the group. Her theme is "First Ladies of the Land Live Again."

The May election meeting is this year hosted by Mrs. Alfred Hill and Mrs. Arthur G. Thorne, chairmen; Mrs. George Schnurr, Mrs. W. H. Ford, Mrs. R. M. Clotfelter, Mrs. John Rice, Mrs. Don Dickinson, Mrs. George Ennis, Mrs. Stanford Tompkins and Mrs. Elliott Wheeler.

Following the May meeting, the Garden Club recesses its activities until an annual summer dance, usually held late in August.

In 1928, about two million gladioli bulbs were grown in Rancho Santa Fe under the direction of Dr. A. R. Sprague, horticulturist for the Santa Fe Land Improvement Co.

## Scouts Plan Field Trips

Scouts of Troop 716 are working on plans for a series of field trips which will take them to industrial installations and other points of interest.

The first field trips were taken April 14 and the troop plans to make the outings a monthly event, Paul Roberts, scoutmaster said last week.

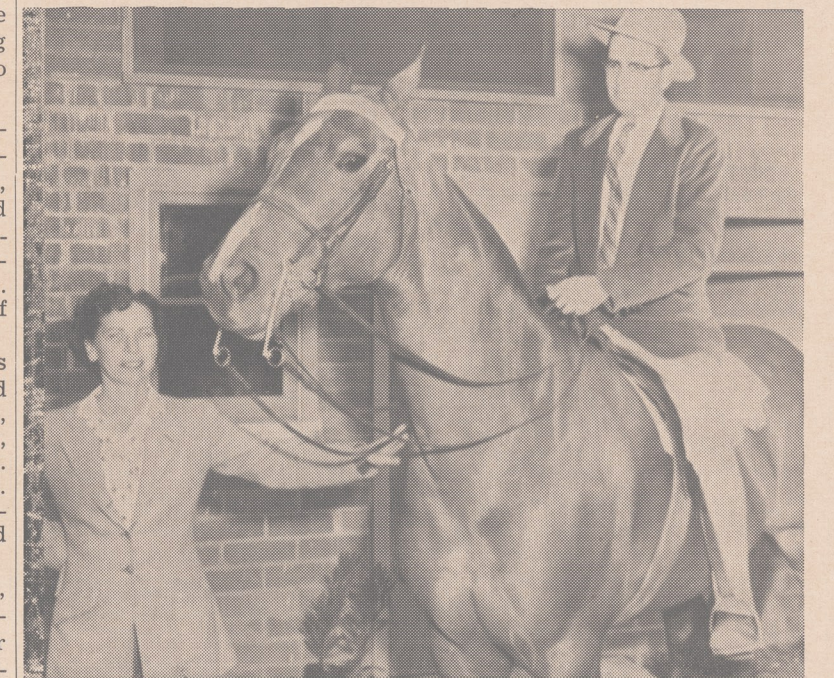
On the first trip, the troop divided into three patrols and inspected a Solana Beach lumber yard, a rifle range in the San Dieguito Valley, and the airplanes at Miramar.

## Los Ancianos To Hear David Hellyer

Jefe R. B. Fischer has announced that the next meeting of Los Ancianos will be held May 2 in The Inn's Meetin' House. The cocktail hour will begin at 6:30 p. m. followed by dinner at 7:30.

The program following dinner will be highlighted by a talk by David Hellyer, Latin American editor of the San Diego Union.

Hellyer will speak on countries south of the border, and will illustrate his talk with screened color photographs.



RIDING CLUB—Two special events highlighted the April 15 "Grand Opening" at the Riding Club stables: the club was presented with a portrait of John Robertson, the club's founder and guiding spirit; and the Riding Club welcomed the resident trainers, Mr. and Mrs. Bob Rice. Above, left to right, Mr. and Mrs. Rice and Mr. and Mrs. Robertson view the portrait. Below, a three-gaited American saddle mare is readied by Mr. and Mrs. Rice for the walk, trot and canter. (Nick Gulling Photos)

LETTERS

### Subject of Subdivisions Discussed By Member

(Editor's note: The following letters, read at the April 20 directors' meeting, were considered to be of enough general interest to be included in the Association Bulletin. They do not necessarily reflect the opinions of the Board. Comments from other Association members on the subjects discussed are invited. The first letter from A. C. Ridland was written in response to a proposed Ranch subdivision, but deals generally with the much-discussed "subdivision" question.)

... My main purpose in writing this letter is ... to express grave concern over what appears to be a trend towards dividing the Ranch into ever smaller parcels. It is quite obvious that any given piece of residential property will be more valuable financially if it can be divided into minimum-size lots. It is undoubtedly the objection to divide into small lots and the insistence on relatively high minimum cost restrictions which have resulted in Rancho Santa Fe real estate being less expensive per acre than that of other communities in the San Diego area. And it is equally obvious that it is these same restrictions which have made the Ranch the finest "country living" community around San Diego.

In other words, the issue is one of allowing subdivision for financial gain, or of maintaining the restrictions for the good of the Ranch as a whole. The argument that a subdivision should be allowed because there are some surrounding properties of the same size is a dangerous one.

(If two-acre subdivisions are allowed) as the owner of the adjoining 17-acre property, I could then logically request permission to subdivide into eight two-acre lots, and so on until the whole Ranch is divided into two-acre lots.

Although I am not saying all lots should be 17 acres, I am raising the question of whether it is not still possible to impose minimum lot size restrictions, varying according to location within the Ranch, which would effectively and impersonally stop this creeping partitioning with-

out the unpleasantness of requiring neighbor to vote against neighbor.

I also fell that there is a difference between subdivision purely for financial gain, and subdivision to enable a person to select for himself a homesite and resell the balance of a property too large for him to keep. I would consider justifiable a ruling which prohibited subdividing a property and reselling it without first improving it to the extent of building a home, or at least showing reasonable intent of so doing at the time of subdivision.

A. C. Ridland

### Riding Through Groves Protested

(A copy of the following letter, addressed to the Rancho Riding Club, was sent to the Association and also read at the April 20 Board meeting.)

We have had complaints from several of our local grove owners concerning horsemen riding through the groves. It seems that this is usually done by young, unescorted riders.

I am sure you realize that this practice is quite detrimental to the groves. All of us who are owners of groves would very much appreciate your cooperation, and that of the Riding Club as a whole, in preventing this practice. This is an old problem but one which is increasing in importance with the increase in the number of riders. . .

R. E. Badger

### Rains Delay Fire Season

The mid-April rains were called "unexpected manna from heaven" by Fire Chief R. B. Duran. He said that if cool weather would continue, the fire season would be delayed until early in May.

Duran had previously stated that ground conditions were considered "the worst in years" by fire officials. He urged residents to be especially careful as the dry season approaches. Fire prevention ordinances will be strictly enforced, he said.

### Use of Fertilizer Type Protested

(In the following letter, Carl G. Muench describes his experiences as an owner whose property borders on acreage leased for cultivation of tomatoes. Before the tomatoes were planted, the land was treated with chicken fertilizer. Board action on Mr. Muench's letter, excerpts of which follow, is told on page 12.)

At first the stench was almost unbearable, but that lasted only about a week. Then we got a plague of flies. They are all around our house, in the breezeway, patio, garage, under eaves, on walls, under trees in the orchard, by the thousands. Spraying with various insect-destroying chemicals around the house is effective for about one hour, then they are as thick as ever.

The experience recited above is what has happened on the Ranch in previous instances.

I recommend that the Board take action to notify all property owners through the Association Bulletin that fertilizer of this type cannot be used. We all know that it is obnoxious, and a detriment to health and welfare, so why permit its use?

For Covenant Authority please note:

Par. 1 "Never be permitted . . . any noxious trade or business; Par. 14 "Maintain the health and general welfare . . ."; Par. 16-A "Take such other measures as necessary to protect from the spread of such infection and-or pests."; Par. 18 Storage of manure. While this does not cover the case directly, the intent is there.

I think it is important to take action on this without delay. While it won't correct our situation, it will be helpful to others.

C. G. Muench

### Ranch High School Students Awarded

Two students from Rancho Santa Fe who are seniors at San Dieguito High School, were listed last month among the winners of the annual Bank of America Achievement awards.

The Ranch students, who were selected by a faculty committee, are Richard Hillman, mathematics, and Mary Lou MacFall, business education. Hillman was also named a candidate for zone competition April 19 at Laguna Beach.

### Fourth Grade Brownies To "Fly Up" May 2

Twelve fourth grade Brownies will "fly up" May 2 in ceremonies to be conducted in the patio of the Garden Club at 3:30 p.m. With their newly-acquired wings and green uniforms, the girls will advance to the intermediate Girl Scout group.

After serving a period as tenderfoots, they will be invested as intermediate Scouts in the fall. Mrs. A.R. Ridland will serve as leader of the Scout troop. Mrs. Ben Fletcher will be co-leader.

Second grade Brownies are concentrating on simple home-making skills. Under their leader, Mrs. George M Ravenscroft, and co-leader, Mrs. Paul Roberts, they have learned to clean their meeting room, make pin cushions and sew on buttons.

### Golf Rules Modified

Local golf rules have been somewhat modified and will appear on a new printing of the score cards. Temporary rules will be posted at the pro shop; otherwise, rules of the United States Golf Association apply.

### an "olde" spanish custom

"to maintain a completely tooled workshop."

OUR STOCK OF HAND TOOLS IS COMPLETE

also you can add the modern touch with ELECTRIC TOOLS

DeWalt, Black & Decker, Skilsaw, Stanley, etc.

Lumber & Builders Supply Co.

Solana Beach

Phone: SKyline 5-1131

### Water District Authorizes Land Study

A land use survey for 1250 acres of tax-deeded lands owned by the Santa Fe Irrigation District was this month informally authorized by District directors.

The land is located between Solana Beach and Rancho Santa Fe and was acquired by the District for delinquent taxes in the 1930's.

The survey will be made prior to any future public land sale. Such a sale will not be held until the district is assured of a 'firm' water supply from the County Water Authority, or from a local storage dam.

Kenneth Volk, District consulting engineer, was directed to obtain cost estimates for such a study, and for an aerial and contour survey. The study will determine the best sites for residential, industrial and agricultural development. At present, the land is not zoned for any development.

D. M. Bakewell, District manager, said that a part of the land has been used recently for dry-farming. Main water lines also go through the property. The District also owns about 500 acres of tax-deeded lands in Rancho Santa Fe. They also will not be placed on the market until a larger supply of water is assured.

### Park Picnic Areas Set For Opening

The county park department has announced that the San Dieguito Park will open on a limited basis sometime in May. The 100-acre recreation area was donated to the county for park development last year by the Santa Fe Irrigation District.

The first scheduled event is a May barbecue sponsored by the Solana Beach Fire Department.

County officials report that only one picnic area will be available this summer. Further improvements on the park-site are not scheduled for completion until next year.

In 1834, Juna Maria Osuna, was elected first alcalde, or mayor, of San Diego. Thirteen votes were cast at this election.

## here's how easy it is to **Open** an account at **DEAN WITTER & Co.**



The card below is the only "introduction" you need to invest with us. You simply fill it in (use the one below and mail to us if you like), then decide what stocks you would like to buy. One of our representatives will be glad to help you whether you have a question or want a quotation . . . need suggestions or statistics . . . whether you want to invest \$100 or \$10,000.

After you've made a deposit with our cashier, your order can be executed and confirmed in minutes over our private wire system.

Why don't you come in soon and ask for a Registered Representative. He'll open an account for you, take your order or help you plan a complete investment program.

CASH ACCOUNT  
 MARGIN ACCOUNT  
 COMMODITY ACCOUNT

Date \_\_\_\_\_

Name in Full \_\_\_\_\_ Mr. \_\_\_\_\_ Married \_\_\_\_\_  
 Mrs. \_\_\_\_\_ Single \_\_\_\_\_  
 Miss \_\_\_\_\_ If joint account, give relationship

Send mail to \_\_\_\_\_

Employed by \_\_\_\_\_ Phone \_\_\_\_\_

Type of business \_\_\_\_\_ Position \_\_\_\_\_

Married Woman's Account: \_\_\_\_\_ (husband's name) (where employed) (type of business)

Bank Reference \_\_\_\_\_ Location \_\_\_\_\_

Previous Brokerage Account or other Business Reference \_\_\_\_\_

Initial Transaction \_\_\_\_\_ U. S. Citizen Yes No

Specimen Signature (s) \_\_\_\_\_

## DEAN WITTER & Co. *Investment Securities*

Members: New York Stock Exchange • Los Angeles Stock Exchange

926 FIRST NATIONAL BUILDING • SAN DIEGO, CALIFORNIA

Telephone BELmont 9-8151

Los Angeles San Francisco Seattle Portland New York Chicago

28 offices serving investors

SOME SOLUTIONS OFFERED

County Presents Village Traffic and Parking Report

A report on an extensive study of village center traffic and parking conditions was presented to Association directors April 6 by Board member W. M. Vanderluis, who had earlier been delegated by the Board to study the problem.

The eight-hour study was conducted Friday, April 16, from nine a. m. to 5 p. m. by the county road department. Paul Fowler, director, later presented the department's findings, recommendations and a statistical graph to Vanderluis who then turned them over to the Association.

To somewhat ease the parking situation, the county proposes to white-stripe parking spaces for the benefit of village motorists. Also, two 15-minute parking spaces will be designated in their familiar green color directly in front of the post office.

Fowler also said in his report that parallel parking now in effect on Via de Santa Fe from Paseo Delicias to La Flecha results in a total of 16 parking spaces. With diagonal parking, safety measures would eliminate parking on one side of the street, resulting in only 14 parking spaces.

The county's study was conducted in the following area; west from both sides of Avenida de Acacias to east on both sides of La Granada; from El Tordo on the north to La Flecha on the south. The latter two streets were corner boundaries, and cars parked there were not included in the count.

The count, made every 20 minutes showed the highest concentration of traffic in the three available spaces from the gasoline station to the drug store. Forty cars parked here during the day, with an average occupancy of one half hour each.

Another high concentration was on the other side of the same street, in front of the post office, where the 15 spaces were each occupied 7.4 times. The average time occupancy of 111 cars parked there during the eight-hour period, was 45 minutes.

For the shopper who can't find a village parking space, Avenida de Acacias, just two blocks from most Ranch shops, has room to

spare, according to the county report. An average of only two cars parked in each of the 34 spaces during the entire day.

A total of 559 vehicles parked in the spaces counted by county workers. A time breakdown follows:

0-20 minutes, 316 vehicles; 20-40 minutes, 70 vehicles; 40-60 minutes, 35 vehicles; 1-2 hours, 66 vehicles; 2-3 hours, 29 vehicles; 3-4 hours, 13 vehicles; 4-8 hours, 30 vehicles.

Rancho Santa Fe Temperatures

With the temperature gauge at The Inn once more in good working order, the Rancho Santa Fe monthly temperature statistics are continued. The monthly high of 74 was recorded March 28. The monthly low of 49 was recorded April 2.

Table with 3 columns: Date, High, Low. Rows for March 28 to April 22.

Tournament Held

The annual 36-hole President's Cup tournament, sponsored by the Rancho Santa Fe Golf Club, was held at the local course, April 15 and 22. Players were divided into three flights in the gold medal tourney, according to their handicap. They were president, governor and duffer flights.

Work and Rain Improve the Golf Course

The lush-green appearance of the golf course has been credited by superintendent Neil McGregor to a heavy application of fertilizer to greens, fairways and tees, timely followed by the mid-April rains.

The appearance and condition of the greens were further improved by the verticut mowers, which cut the grass in a way that removes the thatch, McGregor said. The greens have also been chemically treated to remove inroads made by crab grass, weeds and bugs. The entire course is now undergoing a second fertilizer application, he said.

The greens crew recently completed another blacktopped pathway for golf carts around number nine green. Paths along the golf shop have also been refinished.

Many of the benches have been painted and new ones are being constructed. The rest will soon be freshened with new paint, McGregor said.

Welcome April Rains Total 1.47 Inches

"April showers bring May flowers", the old refrain says, and in Rancho Santa Fe, five April showers not only did that; they delayed the fire season for a month, brought welcome relief to farmers, and somewhat eased the demands for irrigation water.

The five showers brought 1.47 inches of rain to Rancho Santa Fe, according to R. E. Badger, whose rain statistics are periodically sent to the offices of the U. S. Weather Bureau. Total rainfall since July 1 has been 6.33 inches. To April 24 last year, 7.41 inches of rain has fallen.

A breakdown of the rainfall follows:

Table with 2 columns: Date, Rainfall. Rows for April 2 to April 18.

The first two significant departures from the standard gladiolus family—the 'orchid' and the 'tulip'—named for the flowers which they resemble, were both developed in Rancho Santa Fe.

OLA JOHNSON LANDSCAPE SERVICE for the most Complete and Distinctive Landscaping Design and Construction LICENSED CONTRACTOR Experience at Rancho Santa Fe Since 1926 Phone PLaza 6-1427

THE INDIANS WERE HERE FIRST! Then We Got Busy! PERRY REAL ESTATE 4 convenient offices to serve you. Del Mar, Encinitas, Escondido, Rancho Santa Fe. Via de Santa Fe At La Flecha Telephone PL 6-1111



ART JURY: APRIL 2

Eight Residence Plans Given Consideration; Five Approved

First on the Art Jury agenda April 2 were plans for eight Ranch residences. Three plans, on which the Art Jury had requested changes, were holdovers from the March meeting. They were all approved at the April meeting.

The plans were submitted by: John M. Cook, residence, Portion of Lot 14, Block 32; Esther L. Creighton, residence, Portion of Lot 4, Block 48; David M. Ward, residence, Portion of Lot 4, Block 16.

Of the remaining five plans, two were approved and action was deferred on three others.

Approved were the applications of: Louis Renn for a residence and garage, Portion of Lot 3, Block 48; and, William B. Colburn, plans for residence and garage on Portion of Lot 1, Block 31.

The Art Jury requested additional showings from:

Alex De Bakcsy, residence and carport on a Portion of Lot 6, Map 2928.

George M. Gere, residence on a Portion of Lot 5, Block 32.

Floyd T. Ricketts, residence on Lot 125, Map 2089.

Action was deferred on two applications of L. Lawrence Larea; the first for alteration and addition to an existing building (Wishing Well Hotel); the second for a new building. Both plans would increase the existing hotel facilities located on Lots 28 and 29, and Portions of Lots 30, 32, 33, and 34, Block 18, Map 2089.

Two subdivisions were considered by the Art Jury. Its written advice was read to the Board of Directors at the Board's April 20 meeting.

Considered was the request of George M. Gere to subdivide 6.3 acres in a Portion of Lot 5 Block 32, into three parcels of 2.29, 2.11, and 1.09 acres each. The land is presently subdivided in two parcels of 3.1 acres each. The Art Jury recommended that the land should not be divided into smaller parcels than now exist.

The Art Jury also considered the request of Harry R. Lush to divide a Portion of Lot 5, Block 7, into two parcels of 4.61

and 3.5 acres each. It recommended that the Board grant this request.

Approval was given to W. R. Fawcett to construct an accessory building on Portion of Lots 12 and 14, Block 32.

The Art Jury considered four corral designs and approved the following: Clara I. Carpenter, Portion of Lots 1 and 3, Block 44, and, Ronald Riley, Portion of Lot 7, Block 10.

Further details were requested from Lloyd R. George, corral, Portion of Lot 2, Block 19; and, Irvin C. Hovgaard, corral and stable, Portion of Lots 5 and 6, Block 24.

Exterior color samples submitted by the following owners were approved: Carl W. Croft, Portion of Lot 5, Block 6; James E. Dudley, Portion of Lot 14, Block 33; Charles W. Haugsten, Portion of Lots 2 and 3, Block 48; Gordon Kern, Portion of Lot 4, Block 47.

Real Estate Transfers

Recent transfers of Rancho Santa Fe Covenant property as recorded in the Daily Transcript include the following:

Joseph K. and Marie H. Doliva to Paul L. and Mae R. Perry, Lot 146 of resubdivision of Blocks 25 and 26 and Portion of Blocks 19, 20, 32 and 33, Map 2129.

William J. and Laura C. Cox and John and Marian Franks to Paul H. and Judy B. Howard, Portion of Lot 2, Block 6, Map 1742.

Thomas P. and Grayce G. Walker to Mary King Jirsa, Lot 121, Map 2129.

Lloyd R. and Helen J. George to Chester A. and Lois R. Root, Portion of Lot 2, Block 19, Map 1742

Chester A. and Lois R. Root to Kenneth E. Knudson, Portion of Lot 1, Block 3, Map 1742.

Horace G. and Ann E. Phillips to Ronald S. and Melva Riley, Portion of Lot 7, Block 10, Map 1742.

Florence E. and Alice L. Wilson to Floy S. Bingham, Portion of Lot 4, Block 27.

Marvin F. and Elizabeth S. Tackett to Maurice E. and Ethel I. Fowler, Portion of Lot 8, Block 33, Map 1742.

Edward C. and Geraldine P. Trory to Donn W. and June W. Maurer, Portion of Lot 5, Block 35, Map 1742.

Allen L. and Florence L. Welch to Harry H. Hall, Lot 49, Map 2089.

David G. Fleet, dba Fleetridge Realty to Robert M. Crichton, Lot 4, Block 14.

George W. and Athalie P. Moore to Ruth L. Swisher, Portion of Lot 2, Block 47, Map 1742.

Donald H. and Laura E. Ballantine to William H. and Marion H. Drew, Portion of Lot 2, Block 47.

Russell H. and Marion M. Millar to John H. Parmelee, Lot 138, Map 2089.

Morris, Jr. and Ruth Bakken and Madeline Burnell to John C. and Barbara W. Bovee, Lot 29, Block 37.

"No soil or climate is more favorable for floriculture than that of Rancho Santa Fe and flower growing is a natural sequence of landscaping activities of residents," said the Rancho Santa Fe Progress in 1928.

Rancho Santa Fe Country Homes and Homesites R. M. CLOTFELTER Licensed Real Estate Broker Since 1931 PLaza 6-1422

The Country Squire COURTYARD OF SHOPS CASUAL CORNER DRESS SHOP SUGAR PLUM TREE — CANDY, BOOKS COUNTRY SQUIRE TEAROOM COUNTRY MAID — HAIRDRESSER COUNTRY FRIENDS — TRADERS SHOP COUNTRY SQUIRE GIFTS

## BOARD MEETING: APRIL 20

## Association To Send Opinion Poll on License Request

Association directors April 20 resumed discussions on the request of Mr. and Mrs. L. Lawrence Larrea for an on sale liquor license at the Wishing Well Hotel on Lago Lindo road. The Board again deferred action pending outcome of an opinion poll to be sent to the entire Association membership.

The Association office had previously contacted 63 neighboring property owners for an opinion on the request. Approval for the request was voiced by four non-resident property owners and eight local owners. Letters of opposition were received from one non-resident owner and 17 local owners. Three unsolicited letters opposing the request were also received.

Larrea also presented a petition signed by 55 local residents who had "no objection and fully endorsed the application."

Board member W. R. Fawcett made the motion to table the request because of its "widespread implication for the whole Ranch."

Speaking before the Board in opposition to the application were Mrs. Edward L. Cheyney, who requested that the letter of opposition written by Mr. Cheyney be read; Mrs. B. F. Jenkins who urged the Board to deny the request because of the residential character of the surrounding neighborhood; and, A. G. Underwood whose objections were similar to Mrs. Jenkins'.

At the request of Larrea, letters of approval were read from neighboring owners, Dr. Herbert Willy Meyer and Richard Ensign. Dr. Meyer said in his letter that it was in the best interests of Rancho Santa Fe to have the hotel run successfully and in good hands, and that it would never be a nuisance if the Larreas obtained their license. Mr. Ensign said that under proper operation, the serving of liquor should in no way bother near-by property owners or depress property values. He cited The Inn as an example.

Covenant zoning of the hotel property was changed by petition in 1940 from a residential to a commercial zone, C. K. Whittaker reminded the Board. He said his investigation had also revealed that in 1939 the county had issued a hotel permit for an existing building with the provision that any expansion would require additional clearance.

Larrea said he had checked with the county and received a permit for a new building and for an addition to an existing

building. An addition to the original building was also made in 1940.

\* \* \*

**The Charles E. du Pont petition**, to increase the number of building sites to three in Lot 72, Map 2089, was approved by the Board. The 5.04-acre parcel, now divided into parcels of 1.53, 1.69, and 1.81 acres each, is located at the corner of La Valle Placeta and Paseo Delicias. Each site retains the original cost restriction of \$15,000.

According to the Covenant, lots in Map 2089 are subdivided by submitting a petition to surrounding property owners, followed by a public hearing, and finally Board action. Differing from ordinary subdivision procedure, the Art Jury does not enter into the picture.

\* \* \*

**The Board denied the application** of George Gere to resubdivide two adjoining parcels of 3.1 acres each in Lot 5, Block 32, into three parcels of 2.29, 2.11, and 1.89 acres each.

The proposed subdivision was not recommended by the Art Jury; and, of 18 notices sent to property owners within 1000 feet of the property, seven written objections were received. Oral objections were also voiced at the meeting by Dr. Francis Hart and Mrs. Charles Ames, Jr. No approvals to the proposed subdivision were received.

The Board approved the application of Harry R. Lush to resubdivide a Portion of Lot 5, Block 7, into two parcels of 4.61 acres each.

\* \* \*

### In other business the Board:

Authorized the clubhouse building committee to replace the existing clubhouse roof and to complete arrangements for the operation of the clubhouse facilities. (See page one.)

Approved the request of Ruth L. Swisher to remove trees blocking a proposed access road on her property, Parcel 1, Lot 2, Block 47.

Directed Secretary Smart to refer to the legal counsel the letter of Carl G. Muench, on the use of fertilizer by commercial growers, for study and reply. (See page eight.)

Directed the secretary to inform the local postmaster on the outcome of the Rural Free Delivery poll. (See page one.)

Appointed the nominating committee for the June director elections. (See page one.)

Heard a letter from Paul W. Roberts protesting the driving range markers.

## Charles Accepts Sheriff Job

Marion T. Charles, a Ranch resident who will retire May 1 after 20 years of service on the San Diego police force, has accepted the position as Association peace officer. A letter from Charles, which confirmed his verbal acceptance of the job, was received at the Association office early this week.

Charles will start patrolling the Ranch roads and be "on call" for local residents beginning June 1. He replaces Albin Pelko, who is retiring and moving his family to Escondido.

Pelko has lived in Rancho Santa Fe 25 years and has been the local symbol of law and order for 19 years. Daytimes, his familiar figure could be seen watering, planting, fertilizing and maintaining the trees of the

Maintenance District. Since March 1, when his 19-year tenure of service ended with the Maintenance District, Pelko has been working for the Association.

Like Pelko, Charles will also join the county sheriff's department as a country-sheriff.

For the county job, the country sheriff patrols Rancho Santa Fe 40 hours each month. For the Association, the peace officer does a like amount of patrolling. On off-duty nights, patrolling is done by Wayne Billick, a local plumber.

The officer is also available for emergency calls and service.

The 9000 acres which comprise Rancho Santa Fe still retain the boundaries of the original San Dieguito Land Grant given to Don Juan Maria Osuna as a reward for military service during the Mexican regime.

**BULK RATE**  
U. S. POSTAGE  
P A I D  
Rancho Santa Fe,  
California  
Permit No. 15

## CASAS de CAMPO, INC.

*Builders of fine country homes*

Howard Steinwinter

John Bancroft

P. O. Box 6  
Rancho Santa Fe  
PLaza 6-1171

### Willis M. ALLEN Company

Since 1914

REAL ESTATE — INSURANCE  
and  
ALLEN MORTGAGE CO.

Long term life insurance loans  
Serving San Diego County

La Jolla  
GL 4-2158

Rancho Santa Fe  
PL 6-1544

Resident representatives:

Mrs. Louise MacFall

Mr. David Hire

1997.002.012

P 364