

# Rancho Santa Fe News

VOL. 2

MAY, 1937

NO. 2

Edited and Published by S. R. NELSON, Real Estate Broker



Glimpse of Civic Center From Hotel

## RANCHO SANTA FE GARDEN CLUB COMPLETES PLANS FOR NEW BUILDING

Mrs. Norman Carmichael, president of the Rancho Santa Fe Garden Club, has announced that organization's plans for construction of a Garden Club building, to be a permanent center for flower exhibits, shows, club meetings, and social affairs of its members. The

building will be designed by Lilian J. Rice in simple "ranch" style. An added feature will be a reference library of garden subjects, and containing various garden periodicals. Preparatory to this momentous step in its history, the Garden Club is now incorporating.

## DEL MAR RACES START JULY 3RD

"WHERE THE TURF  
MEETS THE SURF"

In the city papers they call it "Bing's \$1,000,000 race plant," sometimes the "Del Mar Turf Paradise." They say it's purely a Hollywood movie organization, and that it's going to have just about everything up to a landing field on the grandstand roof.

Well, anyway, it's a race track, a good one, with a grandstand for 4,000 persons, and a club house for 1,500 more; and Mr. Crosby is the president of the Del Mar Turf Club, which is conducting the twenty-five day meet starting July 3. Work is being rushed to have everything finished by June 15th. The track will be ready to receive horses by June 1.

The grandstand and track are a part of the San Diego County Fair Grounds at Del Mar, five miles from Rancho Santa Fe. A Spanish tone predominates throughout, with boundary walls and buildings of adobe, in early California style. There will be enough stalls for 650 horses, and applications already exceed this number.

Some of the motion picture folk who are interested in the Del Mar track and who will race their horses during the meet are: Joe E. Brown, Bing Crosby, William LeBaron, Sam Briskin, Leon Gordon, Dave Butler, Harry Cohn, Howard Hawks, Raoul Walsh, Constance Bennett, and Ethel Hill. All are owners of thoroughbreds, and eligible for the Motion Picture Handicap, a race only for those connected with the picture industry, to be run July 9th.

## CREATING ATMOSPHERE THROUGH LANDSCAPING

By GLENN A. MOORE

The work of the landscape architect is comparable to that of the goldsmith in that it furnishes the setting for the jewel. The creation of "atmosphere," whether it be for jewels, drama or architecture, is a vital factor in the development of personality. Without the necessary setting the most beautiful house becomes merely a building and as devoid of personality as a beautiful woman without intelligence or charm.

Life would be flat indeed without color, or order, or the pageantry that nature gives to the somber earth. The landscape architect is therefore more concerned with the future than the present and must have the imagination and the patience which visualizes the whole, not a year but ten years hence.

The house that is planned with care and thought for the comfort and delight of its occupants is the concrete realization of many dreams. So are all achievements of any nature first a dream.

To the moulder of landscapes comes the vision of the jewel in its setting. The artisan does not set the pearl in silver nor the diamond in brass. Neither does he lose sight of the need for a rich and suitable

frame for the warm beauty of the ruby or the sapphire. So to each house must be given the setting that warms it into life and blends it with the surroundings. This is not so much for the present as for its continued and perpetual beauty. A bit of brave joy here—laughter of yellow sunlight there—courage of clear blue with restful green and cosy brown, planned and cared for by men who love the call of the earth, are treasures not to be measured in terms of dollars and cents.

Each estate presents a different problem to be met. On one must be built isolation—by which is meant the planting of trees which will in future years protect the house from the survey of its neighbors and give a subtle suggestion of privacy, or to provide the frame for a picture or to exclude an uninteresting view. On another perhaps the problem is one of too complete exposure to wind and sun and here again must the work be done to soften and temporize these most useful elements.

Patience will bring the fulfillment of hopes and plans. Fifteen years of development have added an amazing beauty of contour and color to the charm of Rancho Santa Fe.

## NEW LEMON PLANTING HAS FEATURES OF INTEREST, REPORTS LOCAL CONTRACTOR

R. E. Badger, local horticultural contractor, reports several interesting features in connection with an Eureka lemon planting his organization recently carried out for Robert C. Francisco.

The young trees, budded on sour orange roots, are in "whip" form; that is, without branches. Planting "whips" in this manner makes possible a more efficient training of the primary branches, which is necessary to the formation of a sturdy, clean skeleton in later years.

The planting consists of 200 trees to the acre, half of which will be removed in six or seven years or whenever crowding results. This double planting is to develop a heavy production at an early orchard age.

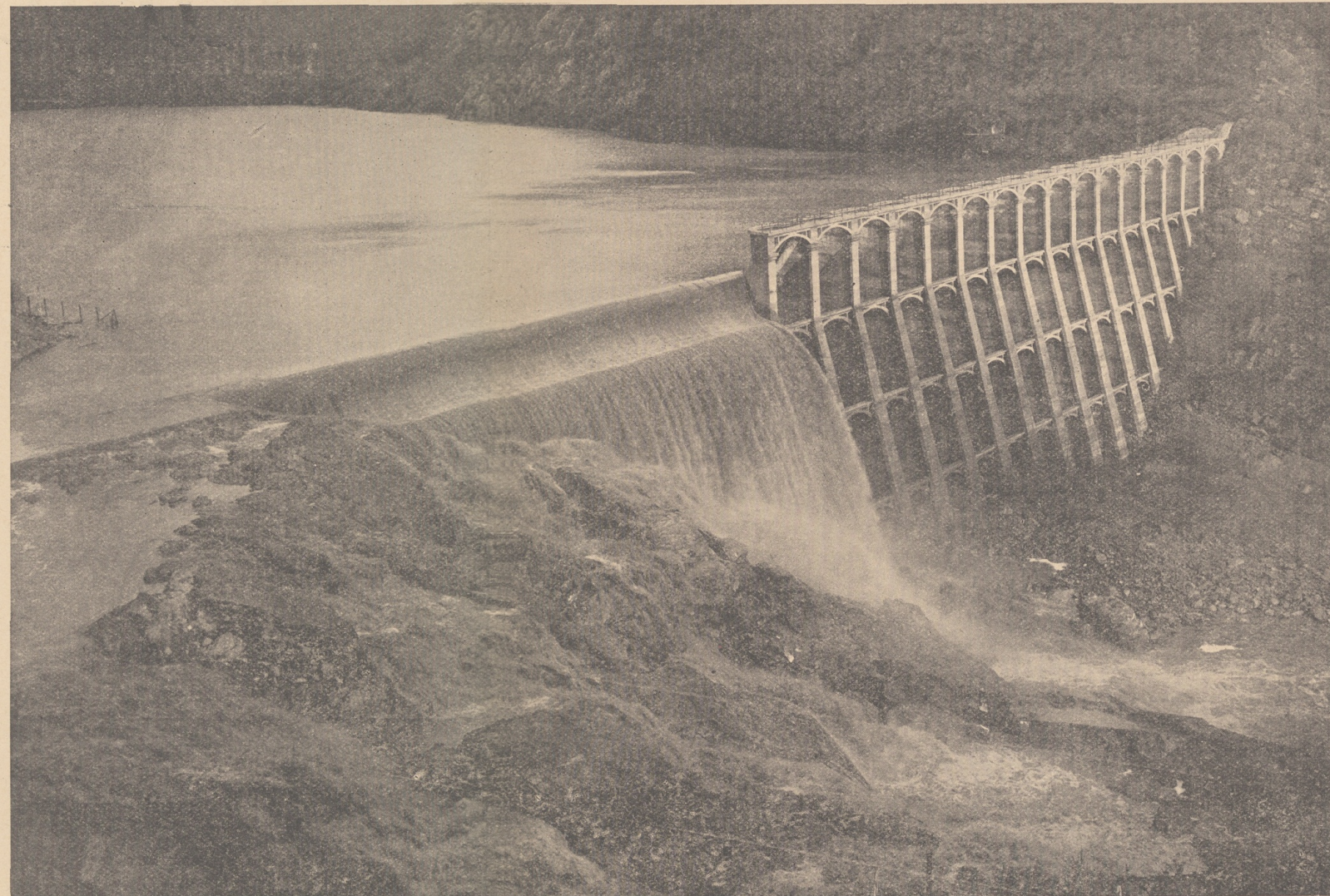
Especial care was taken in lay-

ing out the orchard for irrigation. The degree of slope in an irrigation furrow must be co-ordinated carefully with type of soil and length of the furrows, to insure correct irrigation for the life of the trees.

Rancho Santa Fe is particularly adaptable to Eureka lemon plantings as its climate results in a large amount of high quality fruit maturing in time for the summer markets.

### NEWCOMERS

Stanley Coutant has recently leased Hal Badger's repair shop, in the garage quadrangle, and has taken over the automotive maintenance in Rancho Santa Fe. Mr. and Mrs. Coutant have come from Pasadena, and plan to make their home here at "the ranch."



Rancho Santa Fe's water supply comes from Hodges dam, (shown above) five miles back in the mountains. This year water commenced wasting over the spillway on February 6, and 25,000,000 gallons have "gone over" since then, or enough to fill the reservoir twice.

The dam was built in 1919 by a subsidiary corporation of the Santa Fe railroad, and is now owned by the city of San Diego. It is 115 feet high, and impounds 37,700 acre feet of water when full.

San Diego-California Club Photo, from Farm Bureau Monthly.

## BUILDING NOTES

Frank Burnaby, of the Sun Lumber Co., at San Diego, has recently purchased a lot fronting on the golf course, and is planning to build a residence.

C. F. Meyer has let a contract for a new residence to be located on a prominent knoll overlooking the golf course, and with a fine ocean view.

Work is progressing on the new residence for Mr. and Mrs. Morris Townley. Lilian J. Rice is the architect supervising construction.

Walter Durant is having plans made for complete remodeling and renovation of the former Charles Shaffer residence.

## DISTRICT DIRECTORS APPROVE LAND PRICES

S. R. Nelson To Handle Tax Properties Of Irrigation District

The Board of Directors of the Santa Fe Irrigation District have approved a schedule of prices for the properties to which they have taken tax title. The prices set are very attractive and the property will undoubtedly be soon sold. For more detailed information, write S. R. Nelson, broker at Rancho Santa Fe, who is agent for these properties.

## W. J. KIRK TO RECLAIM VALLEY LANDS; WILL CREATE PRODUCTIVE BEAUTY SPOT

A large reclamation project, planned to bring into production nearly 1,000 acres of San Dieguito river valley land, on the east border of Rancho Santa Fe, has been started by W. J. Kirk, recent purchaser of the property. Work is under the supervision of E. G. Ryan.

It is Mr. Kirk's intention principally to raise winter vegetables such as cabbage, cauliflower, and carrots, and various summer crops designed to keep the soil in fer-

## GROUP ORGANIZED

The large amount of architectural work required by the planning and developing of the new San Dieguito Union High School at Encinitas brought together in the office of Lilian J. Rice, architect at Rancho Santa Fe, a number of draftsmen. Included in that group there were four with outstanding ability and integrity who felt and expressed their faith in the future of Rancho Santa Fe and its surrounding area and who also wished to live in and be identified with this community.

As a result the office is now reorganized and includes Leonard Neal, J. R. Dodd, Olive Chadeayne and George C. Hatch.

Mr. Neal studied architecture at the Royal Institute of British Architects and has continued practicing since 1914 with the exception of three years service in the world war. Fourteen years of that time has been in our own southwest.

Mr. Dodd's study of architecture was done at the University of California and, as he has been identified with architectural work at Rancho Santa Fe for ten years, he will be remembered by many.

Miss Chadeayne is a graduate of the University of California with five years experience in Los Angeles before coming to Rancho Santa Fe a year and a half ago.

Mr. Hatch is a graduate from the Massachusetts Institute of Tech-

(Continued on Page 4)

tile condition. An abundance of cheap water makes irrigation practical; widening and deepening of the river channel this summer will give protection against winter floods.

The San Dieguito valley was once one of the most productive spots in southern California, and it is welcome news to Rancho Santa Fe that it is again to be under cultivation; for, in addition, when this is so the valley will be one of the Rancho's most beautiful spots.

**For Your Information**

Editor's Note:—Confusion exists in the minds of many property owners as to jurisdiction over various local affairs. To clarify this we submit the following information:

The Park and Recreation Board has jurisdiction over all parks and properties owned by the Association including the Golf Course. It also has control of all ornamental tree plantings within 25 feet of street lines.

The Art Jury passes on all plans for buildings and also on resubdivision of properties.

The Association Board of Directors has jurisdiction over all other matters in connection with the covenant.

The Maintenance District Committee has jurisdiction over the public highways, planting and trimming of trees therein, signs, etc.

**RANCHO SANTA FE ASSOCIATION Officers and Directors**

- President ..... Barton Millard
- Vice President ..... Glenn A. Moore
- Directors—R. E. Badger, L. L. Fox, J. C. Smillie.
- Secretary ..... S. R. Nelson
- Building Commissioner ..... S. R. Nelson

**PARK AND RECREATION BOARD**

- M. E. Harrison, A. B. Wells, Clifton Williams.

**ART JURY**

- John Burnham, L. J. Rice.

**RANCHO SANTA FE MAINTENANCE DISTRICT COMMITTEE**

- L. L. Fox, R. B. Mann, J. C. Smillie

**RANCHO SANTA FE GARDEN CLUB**

- President ..... Mrs. Norman Carmichael
- Secretary ..... Mrs. Ruth Nelson

**RANCHO SANTA FE BOOK CLUB**

- President ..... Mrs. W. A. Smart
- Vice President ..... Mrs. G. S. Harris
- Secretary ..... Mrs. H. A. Porter

**RANCHO SANTA FE COUNTRY CLUB**

- President ..... W. A. Bechberger
- Vice President ..... D. M. Bakewell
- Secretary ..... R. M. Clotfelter

**RANCHO SANTA FE SCHOOL BOARD**

- Dr. C. Bertschinger, Ranald Macdonald, A. L. Wick.

**SANTA FE IRRIGATION DISTRICT**

- President ..... A. W. Gilbert
- Dr. Carl Bertschinger, Ira Conner, Joseph Coulombe, W. A. Smart.

- Secretary-Manager ..... D. M. Bakewell
- Assessor and Tax Collector .....

- ..... W. A. Bechberger

- Deputy Sheriff ..... Albin Pelko
- Telephone Rancho Santa Fe 3411.

\* \* \* \* \*

**RANCHO SANTA FE NEWS**

\* Published monthly by S. R. Nelson and F. W. Joers. T. S. Reed, Assistant Editor. Extra copies will gladly be mailed upon request.

\* \* \* \* \*

**STATE LEGISLATURE EXTENDS TAX MORATORIUM NOW IN EFFECT**

State Legislature has passed a bill extending the tax moratorium previously in effect. Under the terms of the new bill, 1936 and prior taxes can be paid after July 1st, 1937, and prior to September 1st, 1937, without penalty or interest charge. This applies only to properties delinquent for 1936 and prior years, and not to delinquencies for 1936 only.

Property owners desiring to make installment payments can, after July 1st, 1937, and prior to April 20, 1938, pay all delinquent taxes including 1936 and prior (but not for just 1936) on the following basis—one-tenth of the total taxes

plus interest at 7% from July 1st, 1936, to date of payment, and 1-10 each year thereafter if payments are made on or before April 20th of each subsequent year, plus interest on unpaid balance at 7%. Current taxes must be paid each year on penalty of forfeiture of previous payments and loss of property.

**GROUP REORGANIZED**

(Continued from page 3)

nology with two years experience in New England offices before coming west.

With the combined breadth of experiences and study along special lines this office is most efficiently equipped to care for architectural and drafting work of any nature.

**COAST HIGHWAY**

Re-construction of the coast highway from Encinitas through Del Mar will soon be finished. Long a needed improvement, the link is about 8 miles long, three lanes wide, and eliminates the bad curve and grade formerly on the south side of the San Elijo estuary, below Cardiff.

**NEW FOALS AT WYVELL'S**

Five horses have been foaled during the past month at Chester F. Wyvell's stock farm in Rancho Santa Fe.

**"EDITORIAL"**

"... If but little should be effected, yet to design more, can do us no harm: For although a man shall never be able to hit Stars by shooting at them; yet he shall come much nearer to them, than another that throws at Apples."—Nehemiah Grew, The Anatomy of Plants, 1682.

**NEW CARS PURCHASED**

Recent Buick sales by Hal Badger, who maintains an agency in Rancho Santa Fe, include a sedan to Mr. and Mrs. Norman Carmichael, and a coupe to Richard Atkinson, who is on a fishing trip in the Great Lakes region.

**NEW VARIETIES PLANTED**

The new Mariposa plum, a patented plant, and the giant Mahan pecan, are among the 25 assorted deciduous fruit trees recently planted by R. E. Badger for J. Theodore Reed, as the nucleus of a "family orchard." The Mahan pecan nut grows to an average length of about 3 inches, is thin-shelled, and has meat of excellent quality.

**RANCHO GOES LITERARY**

Rancho Santa Fe has at last been recognized by the literary fraternity. A short story, by Frederick Hazlitt Brennan, recently published in Collier's magazine, had in it a character who owned "a country estate at Rancho Santa Fe."