

# RANCHO SANTA FE PROGRESS



VOL. 2

OCTOBER

NO. 4

# Eucalyptus Groves at Rancho Santa Fe

By Ruth R. Nelson

Those who have learned to love the eucalyptus forests of Rancho Santa Fe will be interested in the story of the planting of these trees as told by Mr. V. T. Clotfelter, vice president of the Santa Fe Land Improvement Company, during a recent visit.

About twenty years ago Mr. E. C. Ripley who was then president of the Santa Fe railroad, was persuaded by government officials to experiment with eucalyptus to be used for railroad ties. Mr. E. O. Faulkner as chief at that time of the timber and tie department, went to Australia to procure seeds of the varieties which might be most useful.

When Mr. Faulkner had been in Australia for some time, and after a number of sacks of seeds had been shipped back to the main offices at Topeka, Kansas, the Australian forestry department became convinced that this plan of the Santa Fe threatened to interfere with its own lumber trade. Orders were issued that shipments of eucalyptus seeds must be discontinued.

However, through the efforts of friends, Mr. Faulkner was able to obtain the output from a special variety, several trees of which he had bought outright. About 6,000,000 seeds representing more than a dozen varieties had been obtained, and the propagation of these was placed in the hands of a corps of men stationed at the old headquarters of the San Dieguito Rancho, bought by the Santa Fe as the most suitable place for their eucalyptus experiment.

Three years passed. About 3,500,000 trees had been propagated, and of these 3,000,000 were planted out upon the hills of the rancho, a piece of work which "could not be done in a day," as Mr. Clotfelter remarked.

By this time, however, it had been proved that eucalyptus wood was less suitable for railroad building than other woods scientifically treated. Hence the Santa Fe's timber and tie experiment came to an end, leaving a forest of three million eucalyptus trees to grow unhampered, their ever-increasing beauty blending most naturally with California's native shrubbery.

A peculiar characteristic of all eucalyptus is their inability to reproduce themselves perfectly. Until a tree has blossomed and borne its seedpods no one can foretell its exact classification. Sometimes the variation consists in a

mere difference in the number of seedpods upon the stem.

In this connection it is interesting to note that *Eucalyptus citriodora* (lemon-leaved) does not appear in the original list of varieties on file in the Santa Fe offices. Yet an entire row of these very beautiful trees is growing in the vicinity of the old ranch house, and a number of others forms part of the grove on the Fairbanks estate.

*Eucalyptus viminalis* and *Eucalyptus crebra* are the "weeping willow" varieties; *Eucalyptus rostrata* and *Eucalyptus*

Mr. Arthur L. Loomis, competing in the Horse Show at the Pomona Fair in September, brought further laurels to Rancho Santa Fe with his splendid horses, Rexanna Peavine and Matt Cohan. With the former, he won awards in the novice three-gaited class, the under two three-gaited class and the model class. With the latter, he won in the over fifteen-two class and in the three-gaited stake.

The Rancho Santa Fe Fruit Association has arranged with the Escondido Fruit Association, which is a branch of the California Fruit Grower's Exchange, to continue to receive, grade, and pack the citrus fruit of this Association until 1932, should this Association desire to continue the arrangement until that time. This will avoid the necessity of building a packing house until later.



Home of H. G. Larrick, recently completed at the east end of the village of Rancho Santa Fe. A modified Monterey type home.

*tus robusta* two of the commoner varieties, with *Eucalyptus corynocalyx*, *Eucalyptus paniculata*, *Eucalyptus leucocylon*, *Eucalyptus sideroxylon*, are also among the ones found most often at Rancho Santa Fe. Mr. Glenn A. Moore has on file an interesting and valuable map which shows the location of all these different varieties and marks the plantings of the following varieties as well: *Eucalyptus cinera*, *Eucalyptus paniculata*, *Eucalyptus cornuta*, *Eucalyptus diversicolor*, *Eucalyptus Lehmanni*, and *Eucalyptus microtheca*.

Mr. J. B. Lippincott and party recently visited Rancho Santa Fe. Mr. Lippincott's organization has handled the engineering work for the Santa Fe Land Improvement Company for several years. In the party were Mr. J. H. Quinton of Quinton, Code & Hill of Los Angeles, Mr. D. C. Henny, prominent hydraulic engineer of Portland, Oregon, Kenneth Q. Volk and V. J. Myers of the Lippincott Organization and Mrs. Quinton and Mrs. Henny.

Mr. F. L. Cox has resigned from the Engineering Department of the Santa Fe Land Improvement Company to go into the contracting business with Mr. Herbert Nunn. Their offices are in Encinitas and they will specialize in road building. They now are busy with the work of paving the roads in block eighteen in Rancho Santa Fe with oil and rock.

## School Increases 100%

The attendance at the Rancho Santa Fe school has increased until there are now forty-one pupils. This is nearly a 100 per cent increase over last year, and the present number will undoubtedly be increased before the end of the semester.

Much interest has been displayed by the children in the new basketball court which has been constructed on the playground. It is interesting to note the keen interest shown by the children in anything which smacks of the out-of-doors. The playground is far more conducive to outdoor games than is the ordinary playground. Being larger than most recreation grounds in schools ten times as large, it has no prosaic wire or board fence to shut the children in, but instead is dotted with eucalyptus trees, among which the children may romp at will.

Mr. Charles E. Spurr, owner and operator of the Rancho Santa Fe Garage, is ever on the lookout for ways and means of improving his already efficient plant. Most notable of the new equipment in the garage is the very latest thing in an automatic pressure car-washer, which has been installed on the wash rack. This machine effects a material saving in time and does a cleaner and much better job than the old hand method.

On Monday, September 10, Mrs. Claude Terwilliger entertained at a bridge luncheon at Amapola. Covers were set for thirty-seven. Luncheon was served under the direction of Mrs. H. R. Iles. The tea room was decorated by Mrs. Terwilliger for the occasion with a profusion of flowers.

Mr. and Mrs. W. C. Campbell, having sold their Rancho Santa Fe estate, have moved to San Diego for a short time, after which they expect to travel. They have made their home at Rancho Santa Fe the past several years and have a host of friends who will regret their departure.

Mr. E. S. Frenger has arranged for the planting of another eight acres of orchard, probably to avocados, of which he now has more than fifteen acres already planted. The leveling of the ground has already been done by the U. L. Voris Organization.

Mr. and Mrs. E. F. Consigny have selected the name, "Cielito Lindo" for their estate in block 14. The meaning is a "little bit of heaven."

It has been suggested that publication of an estate name in the Progress be considered as a sort of registration. In order to establish prior claim and to avoid confusion, owners who have not yet given expression to their estate names in a public way are urged to do so by notifying Mr. Nelson of the Santa Fe Land Improvement Company.

On Sunday evening, September 23, Miss Travilla McNab entertained at an old-fashioned "beach party," with several of the younger people of the community as guests. A roaring fire of driftwood and eucalyptus wood brought from Rancho Santa Fe gave a true beach party atmosphere. Refreshments were served by Miss McNab and Mrs. Spurr.

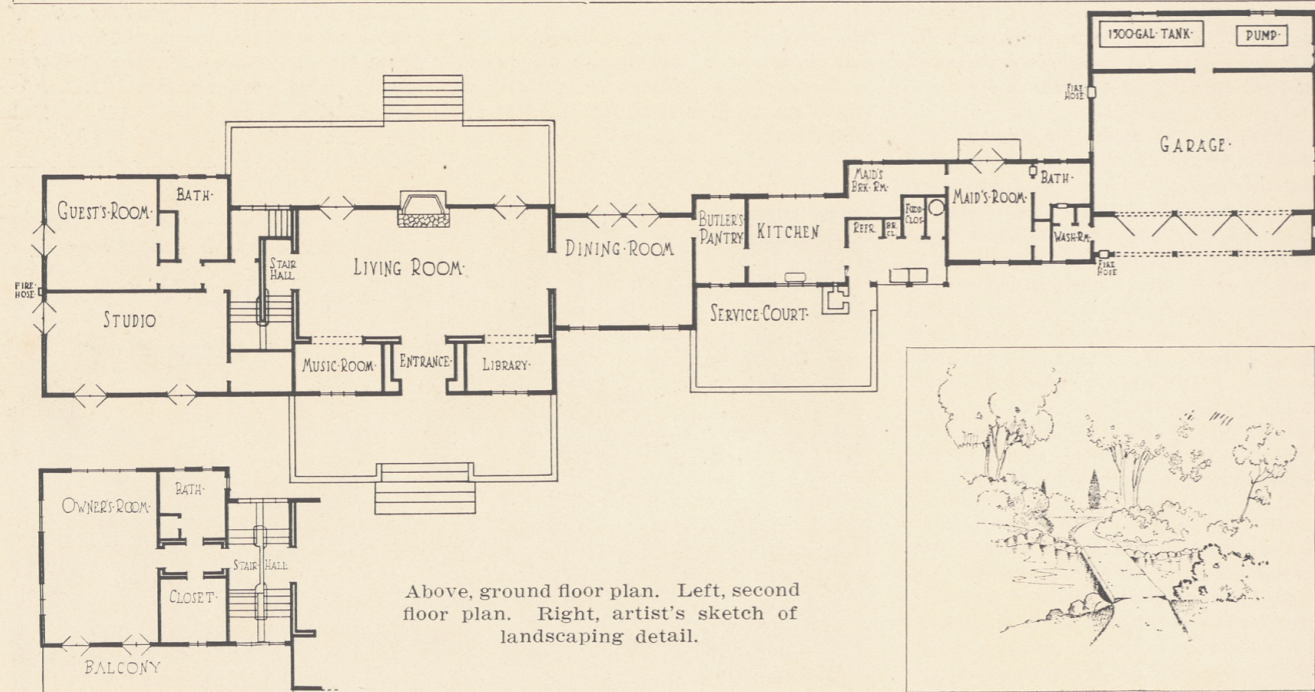


The opportunity for wholesome outdoor play at Rancho Santa Fe is one of the features that appeals particularly to mothers.



Flag raising exercises at Rancho Santa Fe school.

# Combining Beauty With Sound Construction



Above, ground floor plan. Left, second floor plan. Right, artist's sketch of landscaping detail.

The first home to be built in the golf course area of Rancho Santa Fe is that of Mr. and Mrs. C. Everette Smith, now approximately in the middle stage of construction.

This area is destined, because of climate, natural beauty and general environment, to become one of the most desirable residential neighborhoods in all California. And the Smith home establishes in the very beginning a very high mark of excellence—one which will not be easily surpassed, no matter how magnificent the new residential Rancho Santa Fe may become in the years ahead.

The Smith home is one of seven rooms, but this scarcely tells the story, for there are 7,000 square feet of floor space, including garage, and the home altogether is 175 feet long. It represents, in home and landscaping, a very considerable investment, yet there is no doubt but that Blocks 18 and 26 will soon have many more homes of similar character; in fact, at least one other is in the offing now.

From the winding drive down the slope of the Smith estate one reaches the home across a wide terrace. Iron gates guard the entrance. On either side of the entrance hall are alcoves off the living room—one a library and the other a music room. These are really a part of the large living room, to which they contribute a delightful opportunity for privacy and seclusion.

Stairways to the studio and the guest

suite on the lower floor and to the master suite on the second floor are glimpsed through a large arched doorway at one end of the living room. Opposite is another arched doorway to the dining room. The fourth side of the living room opens onto another terrace which looks down across the golf course to the village and to miles of smiling country beyond. The fireplace will be of stone hearth and facing, blending with an aged wood mantel. On the east side of the master suite is a long balcony from which a magnificent view of seven mountain ranges may be had.

Cement foundations are steel-reinforced, with two-foot footings seated in sandstone two to six feet under ground. Floor joists are 2 by 12s, twelve inches apart. Besides customary stucco and plaster, walls have insulation on the outside and sheathing on the inside. Subfloors are of tongue and groove lumber instead of ordinary sheathing. Floors themselves are of solid oak, underlaid with insulating material. The roof is built up of two layers of sheathing with insulation between and four layers of composition with asphaltum between, and with tile overhead. Particular attention has been paid to vents in foundation and roof to afford ample ventilation.

There are more than 200 electric outlets, all of which may be remotely controlled from Mr. Smith's quarters

as well as from the main switchboard. The home is heated throughout by electricity. There is a special system for fire prevention. Kitchen, bathrooms and principal closets are equipped with special ventilating fans.

The kitchen is equipped with a large electric refrigerator, kitchenaid, electric range and electric warming plates. A cold air food closet, or magnified California cooler, has walls double-insulated. A large waterproof, well-ventilated basement, an incinerator and unusually ample water heating facilities are other features of the utilitarian side of the home.

To the architectural side the same care and minute attention to details have been applied, with most excellent results. The most striking feature of the interior scheme is the aged wood effect in beams, panels and ceilings. Using a special blow torch, workmen have accomplished wonders in bringing out the beauty of wood grains in soft brown tones. This treatment is employed throughout the living room, dining room, stair hall, studio and all outside woodwork. A new wood fibre product (like insulating material in form but with a beautiful texture on one side) is used effectively for paneling walls and ceilings in the dining room.

Throughout the home are evidences of thoughtful planning and execution. Provision is made for the use of awnings and umbrellas on terraces and

balconies. There is ample room for the storage of wood. Quarters for house servants and gardener are excellent. A sort of portico across the entrance to the three-car garage provides a place in the eaves for nest-building birds. A separate refrigerator has been installed in the interest of canine gastronomics.

The grounds are to be featured with extensive naturalistic planting. Solid banks of trees will completely enclose the grounds. Against these will be banks of shrubbery forming masses of green. Then will come bulbs, annuals, etc., to lend gorgeous color. A series of lily ponds, rock-edged, and with artistic footpaths and footbridges, will be a feature of the landscaping scheme. The fence around the boundary of the estate will be banked with Cherokee roses. There will be a long pergola leading to a lath house, where the owners may indulge their favorite diversion of growing gardenias, tuberous begonias, ferns and gladiolus. Flagstone and gravel paths will wind throughout the grounds.

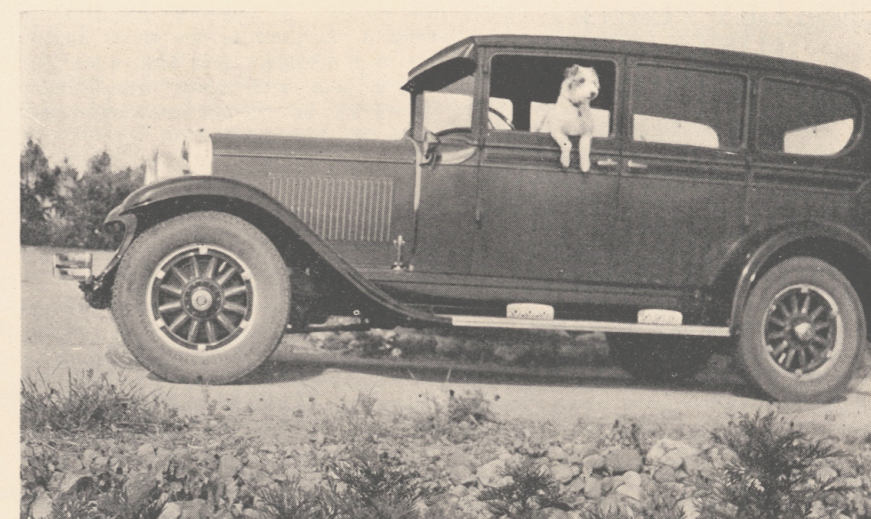
Architectural designing is by Miss Lilian J. Rice of Rancho Santa Fe. Construction is by Linn & Woodward, general contractors of Los Angeles. Landscaping is by Glenn A. Moore, landscape architect of Rancho Santa Fe.

## Plan P. T. A. Library

The association held its regular business meeting on Thursday, September 20, at 3 o'clock. There was a good attendance. Reports from the various committees were read and approved. The basketball committee reported that the court was nearly completed, and funds were voted to buy the necessary equipment. A motion was passed that the P. T. A. start a reference library to be placed in the school for the convenience of the children, and a committee consisting of Mrs. S. R. Nelson and the three teachers was appointed to attend to the matter.

The programs this year are to bear upon the subject of home-making—the various topics to be developed by the different members.

Mrs. W. N. Attrill and Mrs. Robert McKenna were the hostesses at the meeting of September 20. Mrs. Lorene Conning, who is a teacher of dancing and music, had charge of the first program. It was a playlet given by the children in costumes. They were accompanied by a solo by Mrs. Conning, who also sang several other solos, accompanied by Mrs. Wilkins. Little Miss McKenna also rendered a



Beppo, one of the happy residents of the lovely Carothers estate.

very pretty solo. Tea was served.

Attention of those at Rancho Santa Fe is called to the fact that a bridge party is held every first Thursday of the month, at 2:30 o'clock, at 25 cents a corner, to help raise funds for the association. The P. T. A. invites your cooperation.

Mr. Warrington Baldwin, President of the Missouri Pacific Railroad, and family were recent guests of Mr. and Mrs. Ralph Claggett.

Mr. Thomas Ruddy, one of the early purchasers at Rancho Santa Fe, has been spending considerable time here recently looking after his property.

Mr. E. A. Peck, general superintendent of the Baltimore & Ohio Railroad, of Pittsburgh, Pennsylvania, was a recent Rancho Santa Fe visitor.

Miss Edna Stone is now manager of La Morada, taking the place of Miss Frances L. Parsons, who resigned September 30.



Sturdy young America finds the lawn in front of La Morada very convenient for gymnastics.

## CENTURY PLANT FORTY FEET HIGH

One of the century plants, of which there is a large number near the Barlow residence, is blooming. Illustration herewith shows to what a tremendous height it grew within a very short time. Mr. Glenn Moore has identified the plant as Agave.

It may be interesting to know that this is the plant from which pulque, the favorite fermented drink of Mexico is made. Since there is such a large number of these plants on the hillside near the Barlow place, it may also be fairly assumed that Senor Osuna, who planted them, was very fond of this drink.

Mr. John McLaren in his book on California Gardening says of this plant:

"It is a very slow grower, not attaining its full growth until fifteen or twenty years old, when (and not until then) it sends up its tall column-like flower-scape to the height of from thirty-five to forty feet, or more, with a diameter of stem of over six inches at the base. The flower-scape makes a growth of six inches every twenty-four hours, drawing its sustenance seemingly from the thick, large, fleshy leaves. As the flower-stalk grows in height, the leaves gradually become thin and flabby until the flower-scape attains its full height, when the leaves are completely drained of all sap and flesh and become shriveled, lifeless pieces of fibre. After perfecting the flower, and ripening its seeds, the whole plant dies to the ground and is succeeded by a colony of suckers, which form about the roots of the old plant."

## Guild Is Active

Mrs. W. C. Campbell and Mrs. S. R. Nelson, directors of the Rancho Santa Fe branch of the Needlework Guild of America, entertained on Wednesday, September 26, with a very successful benefit bridge tea at La Ampola Tea Room.

A splendid spirit of generosity was shown by all of the sixty people to whom the directors addressed invitations, which were printed and donated by the U. L. Voris organization. Results were as follows:

Receipts from bridge.....	\$12.25
Checks and cash.....	47.00
Children's garments collected	
September 26 .....	78

It was voted to make a donation of cash to the Florida relief fund of the Red Cross.

As will be shown in the final totals, this year's collection has exceeded 110,

the number of garments required to form a "section" of the Guild having its own president and four directors; hence this will place the Rancho Santa Fe branch on an independent basis in the future.

Disbursements: Red Cross Relief Fund, \$25; Needlework Guild of America, \$15. Total number children's garments to be distributed through the San Diego Guild to County Charities, 126.



This century plant now blooming on the Barlow estate is alleged to have grown six inches a day for two and one-half months.

## Notes on Landscaping

By GLENN A. MOORE

Finding a new variety of Eucalyptus, at Santa Fe, not previously located or definitely identified, is the occasion of great interest in the Glenn A. Moore Landscape Organization. Mr. Picketts, in charge of landscape work at the Hammond place, has definitely identified several trees commonly called Tooart—or Eucalyptus gomphocephala, the botanical name for these trees. The hemispheric lid of the unopened bud is broader than the part below, giving the buds the appearance of pegs, the specific name gomphocephala being the Greek for "peg-head."

A. J. McClatchie, government authority on eucalyptus, in an article written for the Bureau of Forestry Bulletin, says the tree furnishes a heavy wood, very tough and strong—one of the strongest timbers in the world. The

grain is so close and curled or twisted that it is not easily split. It is very durable in all kinds of weather and in a great variety of locations. The men trimming and thinning out among the trees assure us of the tree's durability by exclaiming very emphatically their pet expression, "Muy duro!"

\* \* \*

Parkinsonia aculeata is a shrub-like tree of Mexican origin that does remarkably well in dry places—standing drought in its native habitat. Parkinsonia aculeata is an evergreen tree with feathery drooping branches and handsome yellow flowers. We have planted a number at Rancho Santa Fe and when they become more popular we will find a good many of our hill-sides planted to this splendid shrub-like tree. Our Mexican gardeners always greet the Parkinsonia with approbation and feel as if they've found a friend from their home country when they start planting them.

Arrangement of planting is often of more importance than the plant selected. The planting of small shrubs at the base of the hill, graduating to taller trees at the top, is a simple and satisfactory way to emphasize a hill. It is essential not to neglect this, for tall trees soon fill canyons and level off beautiful contours.

\* \* \*

While nature is our best teacher, she does not always produce the most artistic effect, at least from man's view. Nature so often plants the borders of mass effects so closely it is impossible to appreciate tree growth—and how often in extensive growth she forgets our need for views. The need for thought in carefully thinning out native growth cannot be too well emphasized. The judicious use of grubbing hoe and pruners will greatly help nature's arrangement, and, incidentally, the present growth into more normal, beautiful plants. It is

(Continued on Page 8)



Enjoying the sparkling sunshine of Rancho Santa Fe on the terrace of the Coffyn home. Miss Erma McDonnell and Mr. C. W. Watkins and Mrs. Frank Coffyn

## Seeding Golf Course

The contract has been let and construction started on the pump house which is to serve the golf course irrigation system. This structure will house pumps of sufficient capacity to distribute water under ample pressure to the main outlets of the sprinkling system, over the entire course.

Pursuant to the policy of the club of doing everything possible to insure an absolutely first-class championship course, the board of directors recently authorized the purchase and application of an additional quantity of special fertilizer for the greens and tees, in order to insure a smooth, velvety turf.

Seeding operations have been started on parts of the course, and within a month patches of green will begin to appear on the course. It is hoped that it will be possible to seed the entire course before the winter rains set in.

## Road Survey Complete

The survey preparatory to the inauguration of the road improvement program is now nearly complete. This proposed improvement contemplates the paving of all of the major roads on the project, including the main arteries of traffic to Del Mar and Solana Beach. It will probably be spring, however, before active paving operations are started.

### NOTES ON LANDSCAPING

(Continued from Page 7)

surprising how sunlight develops individual specimens of native plantings.

\* \* \*

It will probably be conceded that the main purpose of a park is to preserve, restore, develop and make accessible natural scenery; not primarily a place to play, but a place to "feel one's soul." What a wonderful opportunity we have at Rancho Santa Fe to preserve the native growth of our park areas—segregation of our "play parks" from our "natural park areas." In addition to our park areas of fertile native plantings we have oaks, pines, cypress, sycamores, fremontia, and many other varieties of ceanothi—even *Acacia Farnesiana*, our own native acacia.

Mr. A. P. Morison of Chicago, assistant passenger traffic manager of the Santa Fe Railroad, visited Rancho Santa Fe recently.

Mr. W. L. DuMoulin of Ajo, Arizona, spent some time in Rancho Santa Fe recently, inspecting his orchard estate.

## Looking into one of the Gardens of the Alhambra

—Photograph by Lillian J. Rice



The garden in Spain provides protection and privacy as well as contact with nature. In reality, the patio is an outdoor living room where the Spaniard lives a great portion of his life and welcomes his friends. The beauty of its fountains, its colored tiles and its plants make a fitting background for the true Spanish hospitality.

Word has been received at Rancho Santa Fe that Mr. F. L. Hammond, who recently purchased the old Osuna home from Mr. Arthur L. Loomis, has gone to Europe for a tour.

Mr. S. L. Benedito is adding to his original planting of avocados with five acres of Valencia oranges and walnut trees. The work is being done by the U. L. Voris Organization.

2025-005.015

BX43  
N 1415