

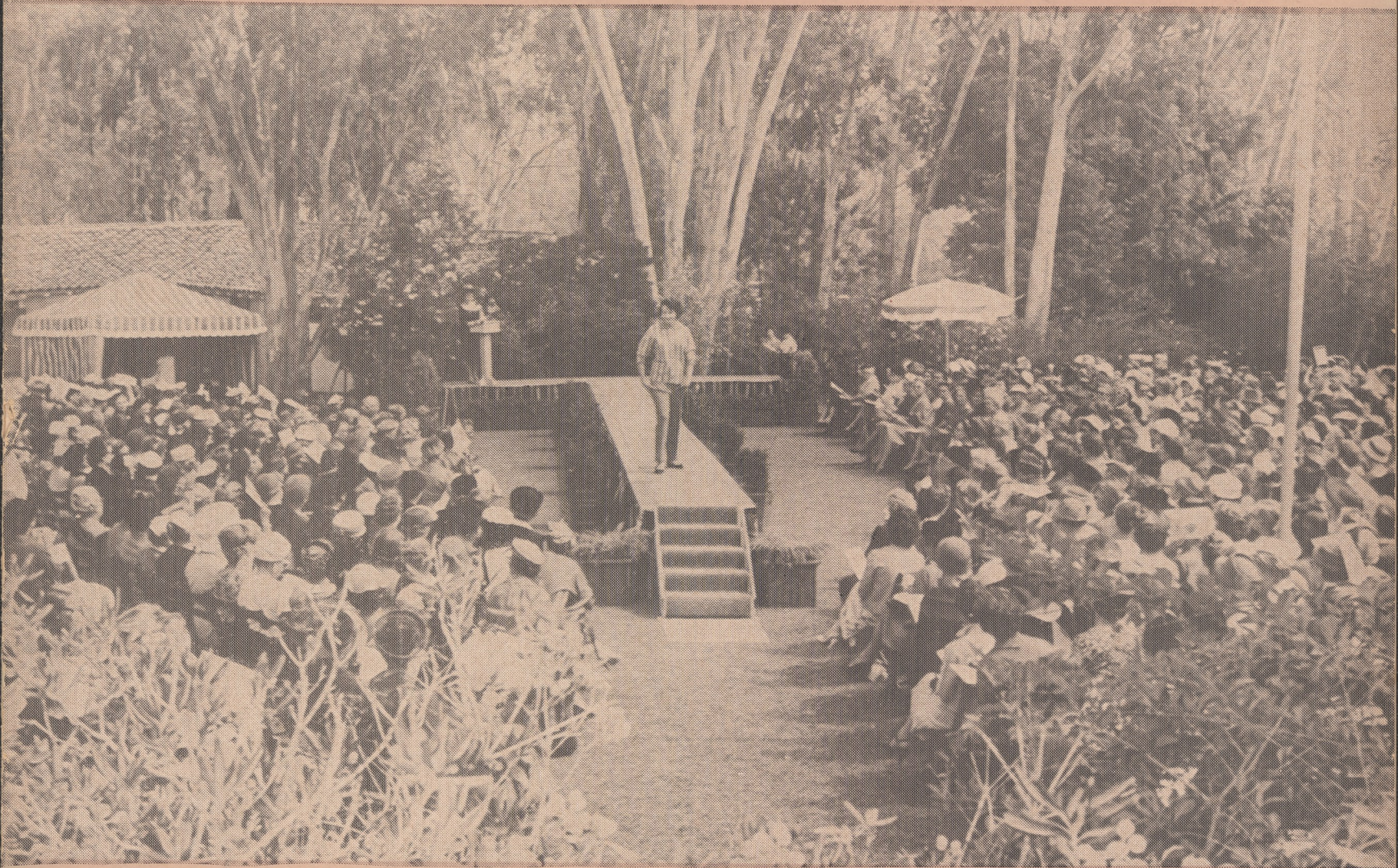
ASSOCIATION BULLETIN

PUBLISHED BY THE RANCHO SANTA FE ASSOCIATION FOR THE BENEFIT OF ITS MEMBERS

Volume 5, Number 10

Rancho Santa Fe

November, 1958



Fine fall weather and this beautiful setting contributed to the success of "Appearance of Autumn" fashion show

In This Issue

Board Meetings

Art Jury

Fall Fashion Show

Ranch Beautification

Golf

Garden Club

United Fund

Firemen's Ball

Garden Page

BOARD MEETS OCT. 3, 17

Adopts Mangore Plan Map As Guide for Subdivisions

At its first regular October meeting, the Association board of directors unanimously agreed to adopt the Mangore community plan map as a basic guide for future subdivisions.

It also accepted in principle the highway subcommittee's report.

At its second meeting, the board unanimously agreed to appoint a "health and sanitation commission" to consist of not more than three members to act as liaison between the board and the county, and to further study health and sanitation problems.

This commission is to act under the jurisdiction of the board.

A petition by Association members to establish a lawn bowling court adjacent to the club house on the golf course was discussed, and petitioners are asked to appear at the November 7 meeting.

A lease agreement was authorized with the San Diego county maintenance department for storage of equipment in the Association's new maintenance building on the golf course. Rental is to be \$75 per month.

Golf course operation was discussed at length, and golf course committee recommendations were requested at the November 7 meeting.

A resolution was authorized protesting the building of major highways through Rancho Santa Fe.

The application of John Howe for subdivision of property on Via de la Valle was approved.

No action was taken on the preliminary application for subdivision of property on El Montevideo by A. R. Faust.

The application for lot realignment of property on El Mirador by Walter C. Young was approved.

The application for subdivision of property on El Vuelo by the Sun Finance Company was approved.

The September gross revenue financial report was rendered by Secretary-Manager W. A. Smart as follows:

Income from green fees was \$5747.00 in cash, \$3304.00 in playing privileges; total \$9051.00.

Golf shop income was \$1945.00 from carts, \$304 from cleaning and storage, \$4300.62 from merchandise sales; total \$6549.62.

Revenue from restaurant and bar \$7059.07.

Total gross revenue \$22,659.69.

RANCH TEMPERATURES			
	Mi. Ma.		Mi. Ma.
Sept. 19	61 79	Oct. 5	66 84
20	62 79	6	69 77
21	65 75	7	70 74
22	67 71	8	68 74
23	66 68	9	66 74
24	65 72	10	68 72
25	58 78	11	67 72
26	63 80	12	66 73
27	62 80	13	66 74
28	66 78	14	63 78
29	65 77	15	66 80
30	64 76	16	70 90
Oct. 1	66 77	17	74 94
2	66 77	18	75 94
3	64 82	19	70 84
4	72 80	20	66 76

Letters to Editor Will Be Welcomed

Questions of timely interest or any matter of common concern to Ranch residents will be welcomed henceforth by the Association Bulletin in the form of "letters to the editor."

"Communication through a publication like ours is a two-way street, and we welcome reactions from the readership," said Harry W. Booth Jr., Association president.

Some of the people with whom it is hoped to gain a closer touch are those Association members who live elsewhere than on the Ranch itself.

The Bulletin is their official contact with Association affairs and with the monthly round of civic and community activities in which they may thus share.

Letters of a constructive nature are encouraged. Matters dealt with need not be earth-shaking in their importance, and letters in a lighter vein will be equally welcome.

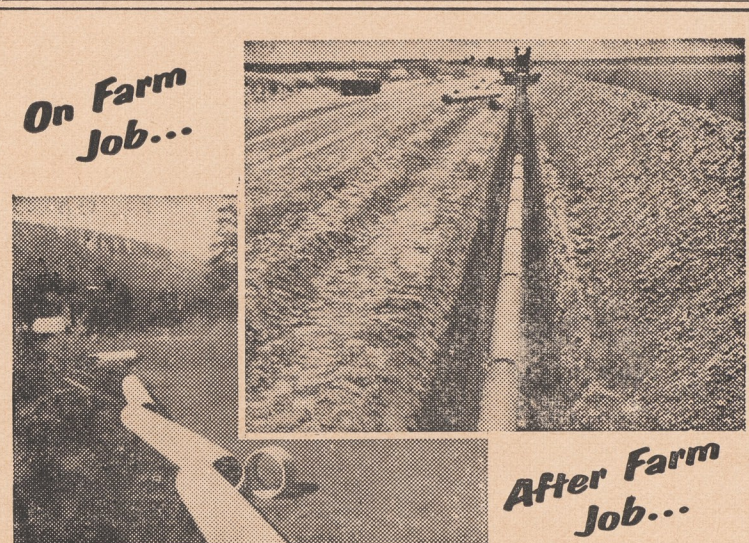
They should be addressed to The Rancho Santa Fe Association, attention Bulletin editor. Either he or an Association spokesman will reply.

Information Bulletin of the Rancho Santa Fe Association Rancho Santa Fe, California

Board of Directors — Harry W. Booth Jr., president; William Weddell, vice president; J. Widman Bertsch, David W. Dewey Jr., Edwin H. Frazer, Dr. Neil J. Randol, Stanford Tompkins; W. A. Smart, Secretary-Manager; Thomas B. Robertson, Editor.



CAN WE TAKE ONE HOME?—The Ranch school's first-grade class visits the Fur, Fin and Feathers pet shop in Encinitas to get acquainted with more animals than are apt to be found around the house at any one time.



Transite Irrigation Pipe protects against shutdowns

FARMERS EVERYWHERE have found using Transite Irrigation Pipe to be the sure way to avoid irrigation shutdowns, prevent water loss and cut pumping costs.

Whether used for sprinkler or surface systems, Transite provides long, trouble-free service.

Made of asbestos and cement, Transite is strong and durable. When used underground in sprinkler systems, its resistance to corrosion both inside and out assures long service life, constant rated pressures.

Internal deposits due to tuberculation will not build up, thus fuel and power wastage caused by overworked pumps is avoided.

Transite will save vital water, reduce operating costs in surface systems for tail water pump-back, too. Specially designed couplings assure positive joint seal yet give line flexibility. These joints stay tight, are not affected by wetting or drying out between applications.

Johns-Manville TRANSITE IRRIGATION PIPE AN ASBESTOS-CEMENT PRODUCT WEBB BROS. DISTRIBUTORS 252 W. Grand Ave. Escondido, California

Preservation of Ranch Beauty Is Theme of Oct. 14 Meeting

Preservation of the beauty with which nature has so lavishly endowed the Ranch was the keynote of a well-attended luncheon meeting at the Garden club on October 14.

Under the chairmanship of Mrs. William Weddell, six spokesmen for Ranch beautification groups spoke. Their reports and recommendations were followed by a talk by Mr. Don Woolley, chief horticulturalist and acting superintendent of the Los Angeles state and county arboretum in Arcadia.

Plants Given to Club

Many actual examples of rare or little-known plants were shown by Mr. Woolley, and discussed for their usefulness in this area. He donated some 25 plants in gallon cans or smaller containers and many packets of rare seeds to the Garden Club for propagation in the lath house.

R. M. Clotfelter, chairman of the Association's parks and recreation committee spoke first on the agenda. He emphasized that the mission of his group was to create a unity of purpose and action with respect to Association property and parks.

Progress on the George Richardson memorial park was reported by Mr. Clotfelter in detail.

Anti-Litter Effort Needed

Mrs. Clotfelter followed her husband on the program, speaking as a past president of the Garden Club. Under her leadership, a successful anti-litter campaign was inaugurated in 1953, with the assistance of Mr. Ed Schriefer.

In making her report, Mrs. Clotfelter emphasized that litter is a continuous problem. There are strong laws against "litterbugs," she explained, but they are very hard to enforce.

A continuous effort is needed through publicity and every possible means to increase awareness of the litter problem and

preserve the cleanliness of public areas.

Children Cooperate

Mrs. P. W. Pichel spoke on plans to enlist the interest of Ranch children in the beautification effort. Her group will undertake a planting project for the roadside embankment on La Granada in front of the school parking lot.

Also planned are special programs for the children on Arbor Day, Johnnie Appleseed Day and Clean-Up Week. The Garden Club will provide plants for the Boy Scouts to put in around the new fire-house addition.

Mr. Charles A. Chapin reported next on accomplishments with Mr. George H. Ennis on the troublesome problem of unsightly power poles and utilities. An effort is being made to screen these by appropriate planting to preserve natural beauty.

Turn-Around Projects Aided

Mr. Raymond H. Gordon spoke next on the problem of landscaping the turn-arounds in residential areas. This is considered something which can best be solved through neighborhood beautification projects, it is felt.

An over-all map is being prepared as an aid to the neighborhoods in getting together for improvement programs, he said.

Riding Trails Praised

Mrs. Alwin Trepte rendered the final report on the riding trails. She emphasized what a tremendous asset they are, and that Rancho Santa Fe is almost unique among California communities in having preserved its riding trails.

In conclusion, the importance of beautification was stressed again in view of encroachments all around the Ranch. The loss of natural beauty on the new Escondido road was cited, as well as the coming industrialization of Sorrento Valley.



VISITING AUTHORITY—Don Woolley, chief horticulturalist and acting superintendent of the Los Angeles Arboretum, is introduced by Mrs. William Weddell to the large audience which attended a luncheon meeting on Ranch beautification on Oct. 14



RARE PLANTS DONATED—Garden Club president, Mrs. Arthur G. Thorne, center, joins Mrs. Hardy H. Kent, left, and Mrs. William Weddell, right, in looking over the group of rare plants donated to the club by the Los Angeles state and county arboretum in Arcadia.

Chrysanthemums, Eastern Bittersweet and Fruits ... For your Thanksgiving table FRANAUD FLOWERS 628 First St. ENCINITAS PL 3-2554

YOUR NEAREST FORD DEALER for Sales and Service "SATISFACTION GUARANTEED" PETERSON FORD IN ENCINITAS 100 North Highway 101 PLateau 3-1161

United Fund Success Sure; 35% Quota In

With pledges totaling \$8124 at press time, the United Fund drive in Rancho Santa Fe had achieved 40 per cent of its goal of \$19,200.

"We hope to do as well as we did last year," said W. A. Smart, and chairman of the drive in this district.

Last year, the United Fund went well over its Rancho Santa Fe quota.

This year's drive concluded officially on October 29, but clean-up work continues in many areas. There will be no post-holiday follow-up drive this year, according to United Fund spokesmen, but organizational units must continue their efforts until every giver in their particular area has been contacted.

Mrs. B. F. Jenkins served this year as assistant chairman for the United Fund drive.

Working under her have been the following area chairman:

Messrs. Garland T. Davis, W. K. Wheelock, William Weddell, Hardy H. Kent, J. H. Reilly, J. Patterson Cabell, Eddie Read,



OFF TO A GOOD START—Attending a "kick-off" coffee gathering are United Fund chairmen, from left, Col. Russell Lloyd, Mrs. Clifford G. Tanner, Mr. J. H. Reilly, Mr. W. A. Smart, Mrs. Edward D Havens and Mrs. B. F. Jenkins. The group met at the Jenkins house.

Edward A. Merrill Jr., Alfred D. Hill, F. E. Bechstein, Claude A. Welles, R. M. Clotfelter and E. D. Havens.

Mesdames George E. Schnur Jr., Horace G. Phillips, Albert H. Dutton, Walter H. Grimm, MacGregor Brown, W. R. Devine, Clifford Tanner, H. G. Wall, Martha Twining, Clifford Jones, Ray Griset, Harold C.

Nigg, Russell Lloyd, Grove C. Mosley, John E. Lee, Gilbert Currie, William M. Seline, H. W. Meyer and H. H. Stone Jr. Capt. and Mrs. G. M. Ravenscroft, Mr. and Mrs. Sidney R. Nelson.

ART JURY MEETS OCT. 10

Twelve Projects Approved, None Denied in Oct. Session

The "ayes" predominated at the Art Jury's regular October meeting when twelve projects gained approval and none were denied.

Approved were the following applications:

F. S. Carter to construct an addition to residence on El Mirlo.

The Inn to construct three new cottages.

Howard L. Wellman to construct a carport and breeze-way for residence on Linea del Cielo.

Preston McBean for patio cover at residence on Via del Alba.

E. Creutz for greenhouse on La Valle Plateada.

Claude A. Welles for tool shed on Mimulus.

The Garden Club to construct an addition to their building.

George Brent for a barn on Rambla de las Flores.

Kenneth E. Knudson to construct a shelter for a horse on

Camino del Norte.

Requests were approved for J. Edmond Kowalski regarding the Maes house at La Valle Plateada and Paseo Delicias; and for H. T. Christanson to grade and landscape lot below Linea del Cielo.

The preliminary application of Frances B. Stiff to construct a residence at El Puente and La Noria was approved. That of Arthur Thorne for residence on El Vuelo was considered.

Consideration was also given to the lot realignment application of Walter C. Young and the subdivision application of the Sun Finance Company.

Action on the subdivision application of John Howe was deferred.

Routine permits were issued, and color samples approved.

The building commissioner's September report was read and ordered filed.



WARNING!

Watch for the

Torture Test

to which we will

subject

our 100 percent

nylon carpeting

early in November.

MAGIC CARPET CO.

115 North Highway 101,
Solana Beach

SK 5-2116

Closest Carpet Specialty
Shop to Rancho Santa Fe



Storage of furniture to insure complete protection requires skill and "know how", facilities and equipment, plus pride in the job to be done. Every Mayflower Warehouseman, in every community, is proud of his handling of storage. You can store with confidence in a Mayflower Warehouse.

COLE MAYFLOWER

COLE LA JOLLA
TRUCK & STORAGE CO.
7851 Herschel GL 4-0444

For Information or Service
Please Call Collect

STORAGE IS A FINE ART, TOO!

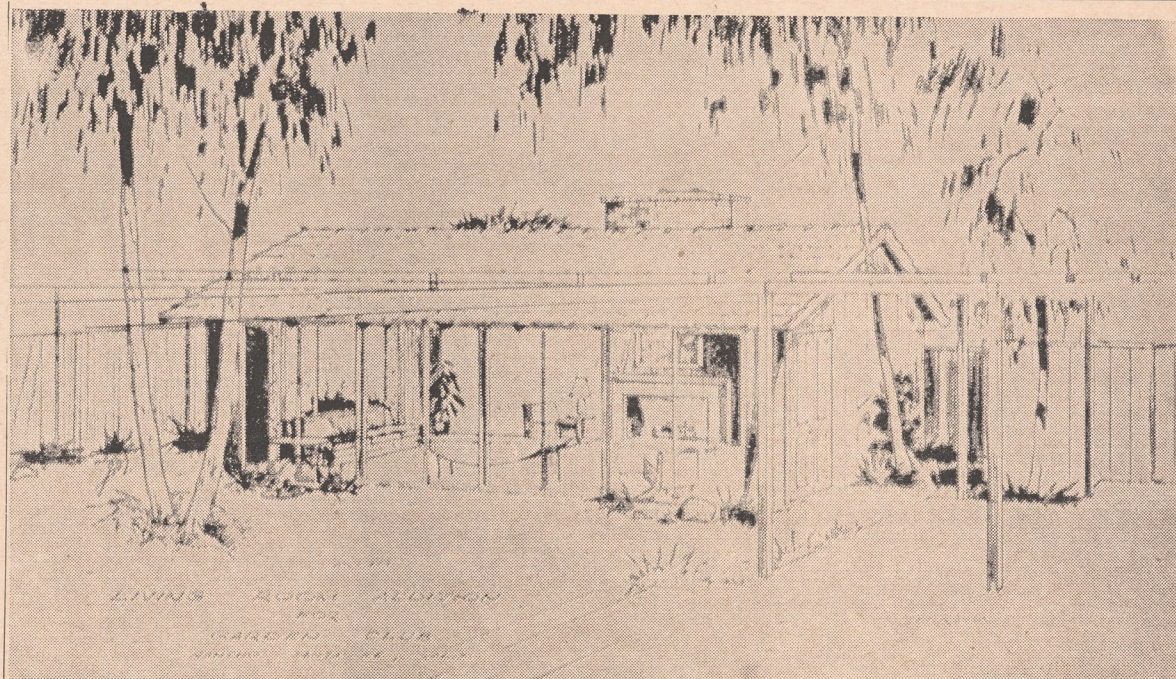
Right on Your Way to San Diego . . .
• Easy Pick-up • Low Cash & Carry Pices
DEL MAR CLEANERS
The Post Office is next to us

Living Room Addition Slated For Garden Club

The commodiousness and convenience of the Garden Club will be increased by addition of a new living room. Construction by Steinwinter and Bancroft is to begin soon.

The new structure will be harmoniously integrated into the over-all design of the existing club building, and will be related to it by the overhead "ramada" or trellis which adds so much charm.

The clubhouse's informal and welcoming atmosphere is enhanced by an easy relationship throughout between indoor and outdoor areas.



PLANS ARE DRAWN—This is how the Garden Club's new living room addition will look from the patio-garden area. Construction will begin soon.

Fall Tournament Golf Results Announced By Bulletin

June Berry and Edith Christopher shared top honors in the Rancho Santa Fe fall golf tournament for the Margaret Rabusha Memorial Trophy, winning overall gross and overall net respectively with scores of 252 and 221.

Class A golfers ended up as follows:

Margaret Meunch won low gross with 254; Connie Huntley low net with 232. Adah Barry took second low net with 236. First daily low net went to Gladys Mitchell with 80; second to Irene McAfee with 76 and third to Louise Gross with 78.

Class B golfers finished in the same sequence as follows: Kay Taylor 291, Esther Copeman 243, Doris Anderson 245; Mae Tillotson 80, Virginia Shaw 73 and Marian Millar 73.

Class C golfers: Beth Long 316, Irene Hieland 240; Ruth Mc Grath took first daily low net with 84, Ellie Nylin 85 and Gwen Lee 84.

Class D golfers: Ellie Currie 330, Norma Mangan 246, Dorothy Millard 250; Barbara Monroe 84, Elizabeth Moore 85 and Joyce Miller 87.

TIEDY'S

TELEVISION & APPLIANCES
RCA COLOR TV
PHILCO — PACKARD BELL
MAYTAG
509 First St. PL 3-1877
ENCINITAS

Brady, Boysen Lead Men's Golf Championship

As this issue of the Bulletin went to press, Brady and Boysen were paired off to fight it out in the final round for the Rancho Santa Fe golf club men's championship.

On October 19, Brady beat Le Barron 7 and 6; Boysen beat Berry 2 up.

In the second flight, Shaw beat Pearson 3 up, and Freck beat Taylor.

First flight results saw Tunstall over Hoskins and Brooke over Moon. In the third flight, Novak won by default and Reagan beat Leadan 1 up.

In consolation flights, Hart beat Wheelock, Pratt beat Mc Mahon, Bowman beat Keller and Tillotson beat Wallace.

In the fourth flight, Col Bock beat Ritchey, Huntley beat Campbell, Heiland beat Root and M. Smith beat Ridley.

In the fifth, Van Patten beat Hammond, Barry beat Kellogg, Rule beat Crutchfield, Carter beat Christopher, Williamson beat Dobroth, Wolfard beat Frazer, Dacus beat Lee and Long passed.



PINNED—Dr. John E. Novak "pins" new Garden Club member, Mrs. Martha Twining, during welcoming ceremonies at the year's opening meeting on October 7. Looking on is Mrs. Arthur G. Thorne, club president.

MOST CONVENIENT . . .

. . . TO THE RANCH

Large Assortment of Imported Wines & Liquors

Del Mar Liquor Store

1446 Highway 101

SK 5-1733

VILLAGE FORGE

Leucadia

• Curtain-type fireplace screens made to order:
Any size, any shape
In 13 decorator finishes
• Name signs to order
1646 N. Hiway 101 PL 3-1641

Ranch Youngsters Develop Poise Through Ballet

Ranch youngsters are responding with enthusiasm to ballet instruction, according to Irene Isham Clark who conducts Saturday afternoon classes at the Garden Club.

Particularly outstanding have been four members of the high-school age group which meets at 3:30 p.m. Pam, Barbara and Pat Warren and Judy Howe have been learning a ballet dance number based on the old Irish folk tune "Kerrie Dancers."

This is very adaptable to performance at school or social gatherings, Mrs. Clark said. It therefore aids poise and self-confidence.

Local Residents To Affiliate With Humane Society

A group of local residents interested in the welfare and humane treatment of animals met recently at the home of Mrs. Paul E. Lloyd.

Many instances of neglect and cruelty involving cats, dogs, horses and cattle were discussed. State and county laws pertaining to responsible ownership of animals were read.

The group plans affiliation with the Escondido and the San Diego humane societies, both of which have been extremely cooperative and helpful. A state humane society officer will come to Rancho Santa Fe in the near future to meet with the group and spend the day.

Sorrento Valley Industrial Park To Keep Beauty

Sorrento Valley Industrial Park, now under development, will combine the natural beauty of the area with a planned industrial community of the highest standards — one which will harmonize with its surroundings rather than trespass upon them.

This was the gist of a talk given on October 21 by J. Edward Martin, partner in A. C. Martin and Associates of Los Angeles, before 100 industrial realtors and planning leaders at the Bahia Restaurant.

The Martin company, one of the nation's 10 leading architectural and engineering firms, has undertaken the master planning and engineering of Sorrento industrial park. It has also been retained by the May Company to design its new installation in Mission Valley.



STORY OF THE DAFFODIL—A group of younger ballet students take their "fifth position" in a ballet interpretation of the "story of the daffodil." With them is Mrs. Clark, instructor.

'Cooperation' Is Keynote Of 1958-59 PTA Program

Under the theme "We expand our circles of cooperation," the Rancho Santa Fe Parent Teachers' Association published its program for the year 1958-59 this week.

PTA officers are Marie O'Rand, president; Pat Todd, 1st vice president; Harriet Knudson, 2nd vice president; Dorothy Gardner, corresponding secretary; Clayre Lange, recording secretary; Joan Dawkins, treasurer; Betty Goodrich, parliamentarian.

Chairmen of standing PTA

committees are Mrs. Ronald Lange, publicity; Mrs. Alex De Bakcsy, founders day; Mrs. Ben Gardner, P.T.A. magazine; Mrs. Ben Gardner, membership; Mrs. Richard McClure, room mothers; Mrs. Frank Bonham, milk fund; Mrs. Lewis Scarr, child care; Mrs. Kenneth Knudson, budget and finance; Chairman—Mrs. L. Siebert, Co-Chairman—Mrs. M. Stout, health and safety; Mr. and Mrs. Albert Dutton, recreation; Mrs. Richard Todd, program; Mrs. William Walker, life membership. Balance of the 1958-59 PTA

**Residences
Building Sites
Investment Properties**

**In Rancho Santa Fe
And Adjoining Areas**
NELSON and CHAPIN
Montgomery L. Hart, Associate
PASEO DELICIAS

Jewelry Showing Set for Nov. 8-10 At Trader Shop

A special showing of precious jewelry will be presented at the Country Friends' Trader Shop in the village center on November 8, 9 and 10.

This jewelry is made by an old Parisian firm, Weisager et Fils, which has received many awards for the excellence of its work. All of it consists of original pieces.

The sale of this unusual jewelry during the three days will accrue to the benefit of the Trader Shop and Country Friends charities.

On October 23, board members of the Country Friends met with representatives of the North County Chapter School for Retarded Children at Oceanside. Miss Margaret Coats is chapter president.

Previously, Mrs. Dorothy B. Patton, Country Friends president, had presented a check for \$100 to the school as an emergency fund. Most of this money came from the proceeds of the Trader Shop operation.

Mrs. Richard J. S. Hale is the school's only teacher at present.

program reads as follows:

Nov. 13 "A Nation's Health is More Than Physical" — evening meeting. Mr. Melvin Murphy, director Mental Health Association.

Dec. 18 Christmas program — "Caroling in the Village." Chairman — Mrs. Priscilla Fawcett.

Dec. 19 Christmas vacation starts.

Jan. 15 "Improving Human Relations." Dr. J. Smith Jacobs, superintendent of schools, Carlsbad.

Feb. 19 Founders Day program — chairman — Mrs. Betty De Bakcsy.

Mar. 19 "Education Around the World" — evening meeting. A panel discussion featuring representatives of several different nations.

Apr. 16 Election of PTA officers, "Music from Every Room"

May 21 Installation of PTA officers. Mrs. Ellen Ross — 6th grade presents an original play.

Jun. 11 An evaluation of the 1958-1959 school program — evening meeting for school board, faculty and parents.

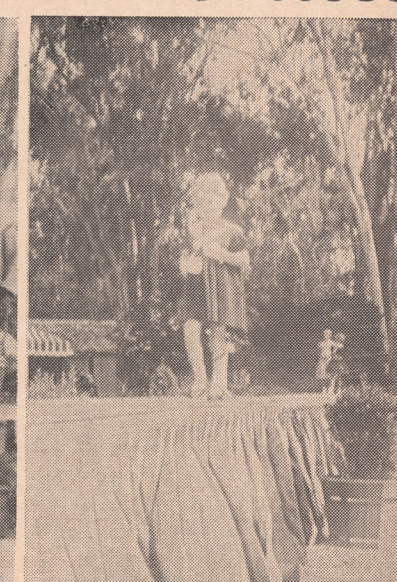
Jun. 19 Last day of school. Regular meetings are held at 3:30 p.m. Evening meetings are held at 7:30 p.m.

Members of the Rancho Santa Fe school board are Dr. Neil J. Randol, chairman; Mrs. P. W. Pichel, clerk; Mrs. Milton Stout, member.

Country Friends' Fall Fashion Show Notable Success



SHADES OF THE 1920's—Fall coats are modeled at the Country Friends' fall fashion show "Appearance of Autumn" on the grounds of The Inn before an enthusiastic crowd. Clothes were lent by The Marston Company. Models were chosen from all over San Diego County.



APLOMB—Younger models almost stole the show at this well-attended fashion show.

Big Crowd Enjoys Spectacle

Ticket sales for the Country Friends' fashion show "Appearance of Autumn" totaled \$4000, according to an announcement made this week by Mrs. Dorothy B. Patton, Country Friends president.

This represents gross revenue, she pointed out, and a figure for the net amount of funds raised will not be available until all bills are in and the expenses tabulated.

Credit for the success of this year's show is due Mrs. Alex DeBakcsy, general chairman for the event; her co-chairmen Mrs. James W. Stockton and Mrs. Norman B. Foster, and all the people who carried out committee assignments under them.

The Country Friends, a county-wide organization of over 723 members, originated with just 70 members a little over four years ago.

Contributions to agencies total \$43,000.00 in this period. Some \$16,000.00 was raised from fund-raising events and proceeds of the Traders' Shop during the fiscal year of 1957-58.

Newest type of donation by the Country Friends was a \$1050.00 scholarship presented to

SD State College for a student of social work, Miss Sally Chisholm, daughter of Mr. and Mrs. Stanley L. Chisholm of San Diego, was the first recipient of this award.

Agencies to benefit from the net proceeds of the annual fall fashion show, held October 9, are Neighborhood House, the Salvation Army's Door of Hope, and the Child Development Center for Retarded Children in Mission Valley.

Three very unusual non-professional models appeared when formal gowns were shown. These "society" models were escorted by Dr. Leon E. Oursland, Mr. Ross G. Tharp and Mr. Axel E. Berndes Jr. Dr. Oursland, president of the San Diego Dental Society was recruited to assist in this event by his charming wife who was chairman of models.

Setting for the show was the lawn of The Inn at Rancho Santa Fe, against a background of huge eucalyptus trees and natural flowering shrubs. Musicians, who played during the coffee hour and the show, were sheltered by a colorful canopy of green and white. All decorations were carried out in fall



FASHION COMMENTATOR—Mrs. Van A. Goodrich of Del Mar is introduced by Mrs. Alex DeBakcsy, fashion show chairman. Mrs. Goodrich, a second vice president of Country Friends, served as commentator for the show.

flower colors. Extensive use was made of the natural setting this season.

Commentator for the show was Mrs. Van A. Goodrich of Del Mar. She is 2nd vice-president of the Country Friends, and served last year as chairman for this event. Mrs. Goodrich was commentator for one of the first Fashion Shows presented at The Inn several years ago, but since that time has been active in other ways. She resumed

a role in which she has a background of "little theatre" work and public speaking. She is a past president of the San Diego county council of Girl Scouts, a sustaining member of the Junior League of San Diego.

For those onlookers who could remember back that far, "shades of the twenties" must have been evident as the models displayed fashions familiar to that era in the styles of today. (Continued on page ten)

Chrysler - Imperial - Dodge - Plymouth

S I M C A

Complete Service Facilities

Your Direct Factory Dealer in ESCONDIDO

Hidden Valley Chrysler & Dodge

A New Location to Better Serve You

121 N. Broadway SHERWOOD 5-5311

"Where Customers Send Their Friends"

Meetin' House To Host Nov. 14 'Firemen's Ball'

The Rancho Santa Fe Volunteer Fire Department will hold its second annual dance in the Meetin' House at The Inn on Friday, November 14.

Dick Minor and his quintet will set the tune for Ranch residents to trip the light fantastic. Tickets are \$2.50 per person, including refreshments — a bargain in any old fire district.

About 200 residents attended last year's "firemen's ball," and over \$500 was raised for the good of the district.

But the main idea is keep up the tradition of a lively annual community event, according to Chester A. Root, district fire commission chairman.

Mrs. William Freck is general chairman for arrangements at the dance.

The Meetin' House is being donated for this community festivity by Mr. Wes Hadden of The Inn.

Door prizes and the Ranch's unique "spot prizes" will be much sought after at the dance. They are being donated by local merchants.

"Spot" prizes are awarded when a couple concludes a dance underneath a certain spot, known beforehand only to the judges.

It could happen to you.



HANG ONTO THAT HOSE—A demonstration of fire-fighting equipment and instructions in how to handle an emergency were given by Ranch fire department personnel for the benefit of all Ranch school youngsters during Fire Prevention Week.

Poster Artists Keep Fire Engine Good and Busy

It was almost too good an idea!

This was Fire Chief Jim Fox's reaction after spending two full mornings taking 180 Ranch school youngsters for rides on

the fire engine.

But he had no choice. All 180 of them had made posters for Fire Prevention Week — and that was the deal he had made. A good turn-out of perhaps 30

poster artists had been expected.

Well, just chalk it up to recruitment — volunteer fire department, class of 1970!

The "Meetin' House" at The Inn



... Perfect for business meetings, conferences, receptions, dinners or parties.



THE Inn AT Rancho Santa Fe

R. M. CLOTFELTER, MANAGER, PLAZA 6-1131

Does your range make cooking "child's play"?

Yes!

When you cook electrically!



WITH A MODERN ELECTRIC RANGE YOU CAN ANSWER YES TO ALL THESE QUESTIONS:

- | | YES | NO |
|--|-------------------------------------|--------------------------|
| Does your range turn off automatically when foods are cooked "just right"? | <input checked="" type="checkbox"/> | <input type="checkbox"/> |
| Do you get consistently good results every time you bake? | <input checked="" type="checkbox"/> | <input type="checkbox"/> |
| Is cooking fun . . . fast . . . and practically foolproof? | <input checked="" type="checkbox"/> | <input type="checkbox"/> |
| Can you cook a perfect meal while you're shopping? | <input checked="" type="checkbox"/> | <input type="checkbox"/> |
| Do pots and pans stay "white glove" clean? | <input checked="" type="checkbox"/> | <input type="checkbox"/> |
| Does your kitchen stay fresh and cool? | <input checked="" type="checkbox"/> | <input type="checkbox"/> |
| Can you boil a pint of water in two minutes? | <input checked="" type="checkbox"/> | <input type="checkbox"/> |
| Are the foods you cook always deliciously moist and juicy? | <input checked="" type="checkbox"/> | <input type="checkbox"/> |
| Does your range "take care of itself" — giving you more time for your home and family? | <input checked="" type="checkbox"/> | <input type="checkbox"/> |

Electric cooking is *easy, quick, clean, cool, economical*, and always *dependable*. What's more, the automatic features of electric cooking enable you to get out of the kitchen . . . and into the family circle.

TALK WITH YOUR DEALER SOON! Or if more convenient, visit the nearest office of the San Diego Gas & Electric Company where a specialist in electric cooking and water heating will help you with your plans to

live better..electrically!



Incidentally . . . while you're investigating the benefits of electrical living, don't overlook the advantages of an *Electric Water Heater*. Fast, clean, dependable. And because an electric water heater requires no flue or vent, it can be installed in any location that's convenient.

SAN DIEGO GAS & ELECTRIC COMPANY

Student Officers, Council Members Get to Work

A new student administration has taken over at the Rancho Santa Fe School, and already has things running smoothly.

Recently-elected student-body president is Pete Dutton of the 6th grade. Supporting him are Vice President Cathy Hillman (also from the 6th grade), Secretary Michelle Pratt and Treasurer Alan De Bakcsy (of the 5th and 4th grades respectively).

In addition to these executive officers, the student council consists of the following people: Cathy Medlicott, Billy Dewey and Janet Amon, all of the 4th grade; Steve Tolson, Monie Hoadley and Kit Taylor of the 5th; Isabelle Fawcett and Roddy Gould of the 6th.

First big project for the new council will be to study and possibly revise the student body constitution. Principal Lambert Baker hopes he will still be in charge of things when they get through.

Teacher Roger Rowe now conducts an after-school recreation program on the playground two afternoons each week.

The younger children gather on Monday, and the 4th through 6th graders on Wednesday.

Results of the San Dieguito school district voting on a new bond issue, held on October 14, show a preponderant affirmative vote in Rancho Santa Fe.

For the new \$495,000 issue were 178 voters; against were 68. Elementary schools in the district, besides the Ranch, are Solana Beach, Del Mar, Cardiff and Encinitas.

Fall Fashion Show Successful

(Continued from page seven)

What the well-dressed women will be wearing this season, was shown in city and suburb creations, attire for leisure time, for after dusk, and for the opera season.

Almost stealing the show were small fry participating, Laura, Nancy, Jonnie and Jeanne, daughters of model Mrs. John E. Egrahl, who were smartly clad in fashions of their age; Candice, Carolyn, Christine and Claudia, daughters of Mrs. F. H. Rohr Jr. also a model, who elicited much laughter among the spectators in their grown-up costumes of the Victorian age.

Besides Mrs. Egdahl, of Vista and Mrs. Rohr from San Diego, models included Meses, Richard A. Boldrick, San Diego; Mark



JUNIOR FIRE MARSHALS—This group of Ranch school youngsters poses with fire hats and "junior fire marshal" rings which they received during Fire Prevention Week.

'Aerifying' Good for Greens

The greens on Rancho Santa Fe's famed golf course have been given a new lease on life through a recently perfected process called "aerifying."

According to Neil McGregor, course manager, a lot of "layering" has built up on these greens during the 30 years since they were first laid out.

This means that successive layers of soil and sand now prevent adequate penetration of irrigation water.

"Aerifying" is accomplished with a special machine which

drills and pulls out half-inch "plugs" of soil — 30 of them in every square foot of green area.

These "plugs" are then replaced with the same soil after careful mixing with a "sharp" sand to insure proper porosity. The term "sharp," McGregor explains, is roughly similar to coarse, and means that it will not bind and prevent water from seeping through it.

The job was finished on October 20, and will be done again next March, and a third time in May. In the future, it is hoped to accomplish this essential maintenance four times a year, McGregor said.

The aerifying machine was borrowed from the Escondido golf course management. Rancho Santa Fe has similar equipment, but of smaller capacity.

the

Fireside

Restaurant and
Cocktail Lounge



A noted landmark for fine American fare, served in an atmosphere of quiet charm! Luncheon, cocktails and dinner ... complete banquet facilities. Member of Diners and Esquire Clubs. A Lawrey at the Wurlitzer.

Highway 395 at W. Washington
ESCONDIDO

Bates, Escondido; Jean S. Cain, Del Mar; Harold Frank, San Diego; James Logan, Cardiff; Charles C. Ramsey Jr., La Jolla; Earl Nadeau, San Diego; David Phair, Chula Vista; A. Richard Stern, Coronado; Kenneth Walker, Rancho Santa Fe; Jarrétt W. Willet, Vista; and Edward J. Vitalich, San Diego.

The many Ranch residents who served as committee chairmen, and contributed so vitally to the success of the occasion, were named in last month's Bulletin.

Gratitude was also expressed by Mrs. Patton to The Inn at Rancho Santa Fe and to Mr. and Mrs. Wesley Hadden for use of their grounds; to The Marston Company for supplying the clothes, and to Ola Johnson Garden Shop for their generous help.

Plant Daffodils Now for Spring

By careful selection of early and late varieties, daffodils can be kept in bloom through most of the season they herald — from January into April. And bulbs of a single variety such as the familiar yellow King Alfred can be planted now, and again after Christmas to give a longer season than is normal for that particular bulb.

Late planting is not the recommended thing, however. The California Association of Nurserymen has found that while late plantings produce blooms, they are neither as long stemmed nor as lush as those in early plantings. Root systems just don't have time to develop before top growth starts and the result is a weaker plant. Plan to get your daffodils in during the next few weeks.

When shopping for daffodils, remember that you get blooms in proportion to the "noses" a bulb has. Double nose bulbs produce more blooms than bulbs with only a single growing point. Your nursery man can show you the differences in different bulbs.

When planting, bear in mind that the blooms usually turn their faces to the sun, so plant them where you will be seeing them from a front view, not the back.

Culturally, you have a few things to remember. A tablespoon of bonemeal scratched into the soil under each bulb produces bigger blooms and healthier bulbs. Large bulbs should be spaced six or eight inches apart, the smaller ones closer than that. And the base of the bulb, depending on its size, should be five or six inches below the surface.

Don't fret over these cultural practices, however. The daffodil is definitely a bulb for the casual gardener. Even if you just poke it in the ground and forget it, it will be there to signal your springs for years to come.

JOHN COLE'S
Book & Craft Shop
7871 Ivanhoe Ave.
LA JOLLA, CALIFORNIA
GLencourt 4-4766

Garden Page

Gardeners' Checklist

1. Keep an eye on your planting of ranunculus. A covering of wire mesh will keep the birds at bill's length when the bulbs start to sprout.

2. Check nurseries to find just the color (orange or red) and size of berry you want from a pyracantha. Plants in berry now are ideal for fall and Christmas color.

3. Keep falling leaves raked up. Compost them by piling alternate layers of leaves and dirt in some out of the way spot in your yard. Keep the pile moist.

4. The early Sasanqua camellias are blooming at nurseries now. You can add weeks or months to your camellia show with a few plantings of these.

5. New lawns may still be planted or old ones renovated. Ask your nursery man about the best seed mixture for your area.

Your Garden Can Smell So Nice

To start the year right, every garden should have daphne odora. Blooming in early January in some gardens, it is intensely fragrant. Daphne is tricky in cool summer areas and needs a warm spot. Elsewhere give it part shade.

The viburnums pick up daphne halfway through its bloom and carry the fragrance into summer months, depending on variety. Since the family does not do uniformly well in all areas, ask your nurseryman about the best viburnums for your garden.

OLA JOHNSON ... LANDSCAPE SERVICE and GARDEN SHOP

Your headquarters for landscaping supplies and service

EQUIPMENT RENTALS **SPRINKLER SYSTEMS**
... for your every need ... simple, practical layouts

FALL BEDDING PLANTS, BULBS, TREES & SHRUBS
FERTILIZING
... complete stock of fertilizers, insecticides and plant materials

SCOTT'S SALE NOW ON

Licensed Contractor
... for your protection

Masonry Work
... stone, brick, etc.

Creative and practical designing

Rancho Santa Fe • In the Village Center on La Granada • PL 6-1427

Bedding Plants For the Winter Gardener

Many gardeners who go all out for summer annuals tend to fold their hands come Fall and wait impatiently for Spring before they shift into high gear.

However, Winter doesn't have to be a bleak period in your garden, consoles the California Association of Nurserymen. That is, not if you hustle down to your nursery and take advantage of the wonderful winter bedding plants. If planted in succession from now into autumn, these will provide welcome color from mid-winter into Spring.

Among the popular winter annuals for mild California climates, you will find calendulas, snapdragons, stock, violas, pansies. The important point to remember in planting any of these selections is that time is a factor. If you wait too long, it will be too cold to start the tender young plants and you will miss out on the all-important winter blooming period.

The Calendula (or Pot Marigold) is one of the brightest stars of the winter scene. It is a happy choice for massed effects with its brilliant tones of yellow, golds and now even persimmon and pale apricot.

Winter stock is the favorite of many a knowing gardener. Tall, fragrant, beautiful — it will bloom colorfully with no effort on your part over a long period.

Violas and pansies are perky little low-growing flowers, ideal for borders or edgings or anywhere you need a sudden burst of color. With the addition of many new varieties, you have your choice of almost every color of the rainbow.

Since it will be warm when you plant these annuals, it is important to keep them well-watered until they are established.



The Fancy Pantry

7852 Girard Ave.
LA JOLLA
GLencourt 4-2121

- Two of La Jolla's finest shops to serve you.
- Featuring imported & domestic groceries, wines, liquors & liqueurs.
- Featuring unique gifts and gift baskets for the holidays.
- Free deliveries each Tuesday & Friday to Rancho Santa Fe.
- Inquire about our ice cube service.

The Town & Country

7541 Girard Ave.
LA JOLLA
GLencourt 4-6227

Philharmonic Artists' Series Opens Escondido Season

The Philharmonic Artist's Association's 13th season in Escondido opens Monday, November 3, with what promises to be a gala evening performance.

The New York musical hit "Candide," written by Leonard Bernstein and Lillian Wellman, is to be presented with three

top New York stars Robert Rounseville, Irra Petina, and Martyn Green.

Press releases from the East have been more than enthusiastic about this production.

The Roberto Iglesias Spanish ballet will follow on November 27. This is their first appearance in the United States, and they are causing a sensation on the East coast now.

The Los Angeles philharmonic orchestra will feature for their February 24 concert the young and talented Polish pianist, Andre Tchaikowsky.

The last concert of the year, March 19, will bring a repeat performer — the ever-popular Metropolitan Opera tenor Jan Peerce.

The concerts are attended by season subscription only. A few season tickets are still available through the Reese Music Store in Escondido. For information, call Mrs. Grove C. Mosely.

Land Transfers

The following real estate transfers were recorded since the last issue of the Bulletin went to press.

Purchasers whose names appear in bold-face type are new covenant members of the Association.

Santa Fe Irrigation District to **William R. and Louise D. Ewing** lot 35 of map 2089.

Paul and Judy Howard to **Preston E. and Frances B. McBean** portion of lot 5, block 44.

La Jolla Investment Co. to **Vernon M. and Catherine C. Burns** portion of lot 3, block 36.

Ruth C. Monsees to **Mrs. Cheryl T. Jordan**, portion of lot 7, block 9.

Mrs. Margery H. Bowles to **Donald M. Laflin** lot 55, map 2089.

Lemuel K. and Lucia D. Taylor to **Elwood and Margaret C. Thompson** parcel 1 of lot 3, block 5.

Alyce R. Malcolm and Douglas R. Lewis to **Harold C. and Melenia B. Hill** portion of lot 4, block 35.

Santa Fe Irrigation District to **Loretz & Co.** portion of lot 9, block 24.

Santa Fe Irrigation District to **Charles W. Lee and Garland T. Davis** portion of lot 9, block 24.

Grace Carmichael to **Edward J. and Ruth Hujsak** portion of lot 6, block 31.

Grace Carmichael to **Mr. William Mahrtdt** portion of lot 12, block 47.

Robert A. and Bettye L. Kenney to **R. E. and Ruth C. Badger** portion of lot 3, block 30.

Edward J. and Lillian LeFevre to **Walter A. and Hilda Fannin**

portion of lot 3, block 20.

Hiram H. and Lis Benedict to **Lucille S. Hopper**, portion of lot 8, block 7.

Fred J. and Maurine Blanck to **James H. and Virginia L. Blesso** portion of lot 4, block 35.

Irwin C. and Mildred A. Hovgaard to **Elwood A. and Gwendolyn C. Titcomb** portion of lots 5 and 6, block 24.

Third Generator Boosts Output Of Encina Plant

Another stage in San Diego Gas & Electric Company's multi-million dollar expansion program to provide service to its more than 283,000 electric customers has been reached.

Following a four-week period of testing, a third 106,000 kilowatt generating unit, involving an expenditure of approximately \$13,800,000, has been placed in commercial operation at its Encina plant in Carlsbad.

THE TRADIN' POST

BULK RATE
U. S. POSTAGE
PAID
Rancho Santa Fe,
California
Permit No. 15

Rancho Hardware in the Village Center

Get your Gardening
Supplies & Tools Now
Also Barbecue Supplies
We Give S&H Green Stamps
PL 6-1702

CULLIGAN Soft Water SERVICE

for BETTER LIVING
111 So. Cedros P. O. Box 278
SOLANA BEACH
Phone SK 5-1022

ENCINITAS APPLIANCE G E and Frigidaire

620 2nd St. PL 3-1626

For any make NEW or good
used car, call **BILL APPLE**,

A & A MOTORS QUALITY CARS PL 3-1702

204 N. Hwy 101 Encinitas

Gailey's Photo Supply "Escondido's Most Complete"

230 E. Grand
Phone SH 5-7823 - Escondido

MacPherson's

Men's and Women's
Quality Clothing

515 First Street
PL 3-1953
Encinitas

ENCINITAS LUMBER CO.

Everything and anything
for building
745 First St. Encinitas
PL 3-1148

GOODIES GALORE COFFEE SHOP

The only Coffee Shop in Town
588 Hiway 101 Encinitas

DOUGLAS HANNA

The Linen Shop
WAMSUTTA SHEETS
and TOWELS
1141 Prospect St. • La Jolla

Hanlon's Ambulance Service

24 hour service
1105 Hy 101 Del Mar SK 5-1378



Fur, Fin & Feathers

Pet Shop

Poodles Our
Specialty

- Trimming
- Boarding
- Accessories

222 N. Highway 101 — Encinitas — PL 3-3783

Rancho Santa Fe Country Homes and Homesites

R. M. CLOTFELTER

Licensed Real Estate Broker

Since 1931

PLaza 6-1422

Paseo Delicias

1997.002.043