



Tour of Historic Lilian Rice Homes in Rancho Santa Fe

Saturday, May 6, 1989



Lilian Rice,
born in National City in 1888,
received her degree in architecture from
the University of California,
Berkeley in 1910.
In 1922, after choosing
to begin her career in San Diego,
she was assigned to design and plan
the community of Rancho Santa Fe.

*Today, her sense of visual harmony,
natural simplicity and use of
Spanish Colonial architectural motifs are
still evident at The Inn at Rancho Santa Fe,
many buildings of the Village and a number
of residences within this beautiful community.*

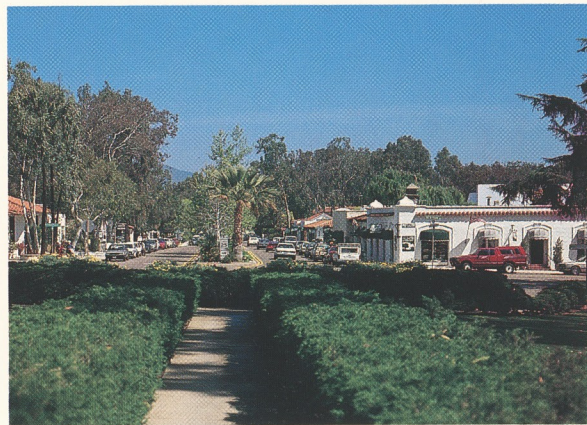
*The State of California on
February 3, 1989 designated Rancho Santa Fe
a California Historical Landmark.*



*"True beauty lies in simplicity rather than ornateness.
I find real joy at Rancho Santa Fe."—Lilian Rice
May 1923*



*View from The Inn looking east
down Paseo Delicias
circa 1920*



*View from The Inn looking east
down Paseo Delicias
March 1989*



*Detail of Architectural Style
circa 1927*

*You are cordially invited
to visit five Rancho Santa Fe homes
designed by noted architect
Lilian Rice.*

*The tour is scheduled for
Saturday, May 6, 1989, from 10 am to 3 pm.*

A buffet luncheon en plein air will be served.

*A tax deductible donation of \$40 is requested.**

**Donation tax deductible to extent allowed by law.*

Reservations limited.

Please respond by April 22, 1989.

For further information, please contact:

Dee Parks — 756-0106

Bettie Wharton — 459-2519

Pat Townsend — 756-2064

Design — Benelli Design Copy — Saxon Rawlings

Film — ColorWest Brochure Printing — Sun Litho Cover Printing — Image Printers

Copy Printing — Ranroy Co. Envelope Printing — Classic Printing Typesetting — Thompson Type

Photography/ Illustration — Nishihira Photography, San Diego Historical Society-Ticor Collection

