

Del Mar Turf Club

Edition of

Rancho Santa Fe News

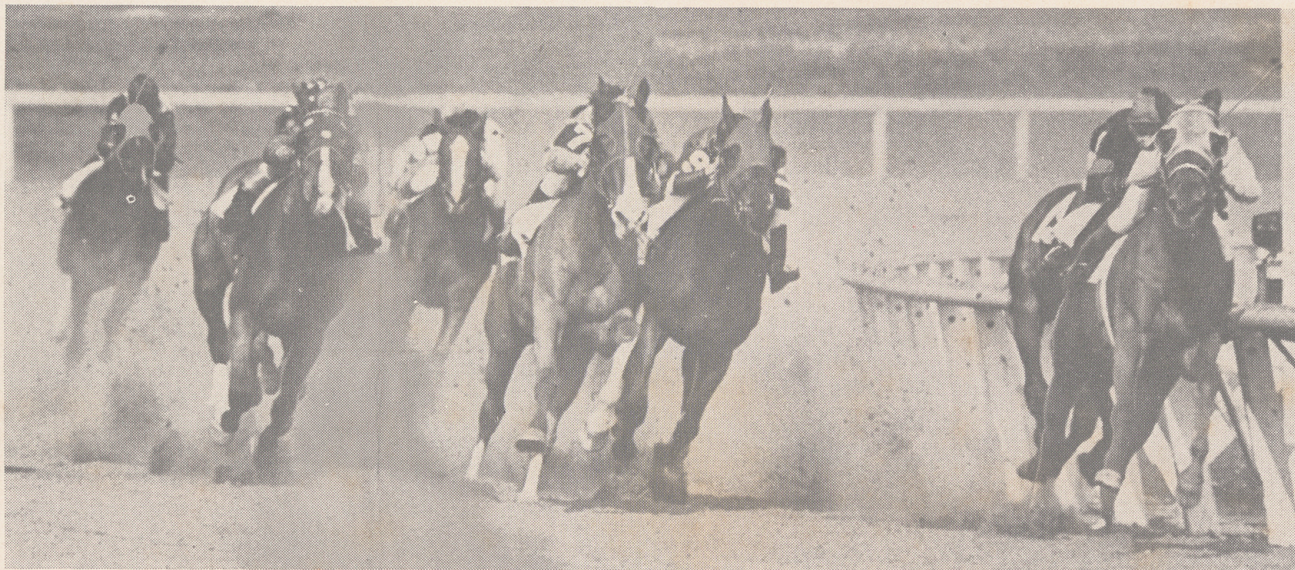
VOL. 2

JUNE, 1937

NO. 3

Edited and Published by S. R. NELSON, Real Estate Broker

THE DEL MAR TURF CLUB "WHERE THE TURF MEETS THE SURF"



INAUGURAL RACE MEETING AT DEL MAR JULY 3RD-- 31ST INCLUSIVE

—By Michael Mahoney—
Director of Publicity
(The Del Mar Turf Club)

Del Mar is "Where The Turf Meets The Surf", as Mr. Bing Crosby so aptly authored on recent occasion, and where The Del Mar Turf Club, of which Mr. Crosby is President, will on Saturday, July the 3rd., inaugurate a 22 day meeting of the Thoroughbred Horse.

Gala indeed will be the occasion! Ceremony and Pageantry will blend in pleasing pattern with the color and glamour which Hollywood always brings to the scene. Every Hollywood celebrity will be on hand to see horses of quality, in every

sense of the word, match stride and speed for glory and for gold over a one mile racing strip; groomed to perfection.

More than \$1,000,000 has been spent in effort to make the racing establishment of The Del Mar Turf Club one of which its sponsors are pardonably proud. Beginning with the general scheme of architecture, Early California Mission, down to the minutest detail, beauty and comfort and convenience has been first in the minds of those who on Saturday, July the 3rd., will take pleasure in turning over to visitors, from far and near, The Del Mar

(Continued on Page Nine)

How To Reach The Race Track

—By Michael Mahoney—

The journey to the race track of The Del Mar Turf Club will include no hardships, no undue delays, no irritations, and inconveniences will be conspicuous by their very absence. The traveller may make choice of several mediums of transportation—i. e.: Motor Car, Train, Airplane, and the Sea, with riding in motor busses thrown in, for better measure.

Los Angeles is about 100 miles from Del Mar; San Diego 20 miles away. Highway 101 lies between, and upon this Highway will travel those who make the trip by motor car, or bus. Highway 101 "runs" within 300 yards of Del Mar's race

(Continued on Page 10)



REAL adobe walls provide a fundamental charm in Bing Crosby's new country home, designed by Lilian J. Rice, local architect. Because he chose the sheltered and sunny slope where the original adobe buildings of the nine thousand acre grant were placed, the character of the new home was influenced by those two fine old buildings. To pay tribute to their integrity, courage and hospitality, the new home was designed and built of adobe bricks, molded by Mexicans; but laid up with such modern methods as have made adobe construction substantial. These thick walls provide a warmth in winter and a coolness in summer. Long low porches with blue painted ceilings invite one to the out of doors and welcome him back for protection and relaxation when work or play is over. Here Bing Crosby truly lives and entertains.

On the left is a detail of the grounds and home of Mr and Mrs. Russell Millar. Glenn A. Moore, Rancho landscape architect, chose for his theme a famous European Garden. Mr. Moore also did the landscaping work on the grounds of Bing Crosby.



PRESIDENT OF THE DEL MAR TURF CLUB

Harry L. "Bing" Crosby, who finds himself in a role for which he is admirably suited. Bing is first and foremost a Sportsman of highest quality. He loves horses and golf and people, and, like many of the great men of his time, and before, he loves the soil—to wit: his extensive ranch and horse-breeding establishment at Rancho Santa Fe, close by the beautifully-appointed race track of which he is President. Endowed with an envious personality, Bing loves to mingle with horsemen; with golfers, and with the man in the street, regardless of his station in life and this, together with his world-wide fame as a singer and an actor, has endeared him to hundreds of thousands. Bing is tremendously popular with horsemen and as a result his successes on the racing strips breed no envy. Now cooperating in fullest measure with his stockholders and officials, Mr. Crosby soon will offer for your pleasure the Del Mar Turf Club, hard by the restless waters of the broad Pacific, at Del Mar, California.

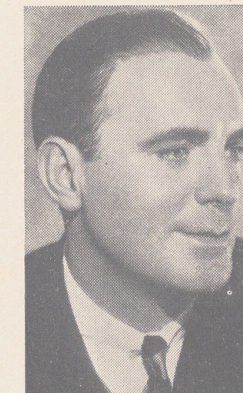
AND HIS BOARD OF DIRECTORS

Pat O'Brien, famous motion picture star, who is Vice President of the Del Mar Turf Club, is another outstanding athlete and gentleman, who has turned a great portion of his well known interest in all kinds of sports to horse racing. O'Brien is filled with enthusiasm, re: horse racing, and he's for clean sportsmanship, which is in keeping with the character of the man. The Del Mar Turf Club's Vice President is possessed of one of the most likeable personalities one could hope to meet and he's a friend of his fellow men, without reservations.

William A. Quigley, Director of Racing, upon whose broad shoulders has fallen a mantle which he is wearing in efficient manner. Quigley, a former all around college athlete, has taken naturally to the racing game. His record, as an official at various ranking tracks throughout the country, is outstanding. And coupled with this experience is his genial personality and his fine executive ability.

Chas. S. Howard is one of California's leading business men, and his enthusiasm toward the Del Mar Turf Club is in keeping with his splendid personality and the sportsmanlike manner in which he runs this popular Stable, carrying the red and white silks.

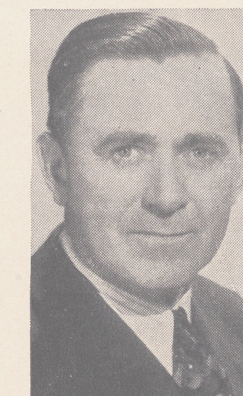
Kent Allen is a prominent attorney and the legal brains of the Del Mar Turf Club. With his regard for fairness and the high standard he sets in his dealings with men, Mr. Allen blends perfectly into this group of real sportsmen.



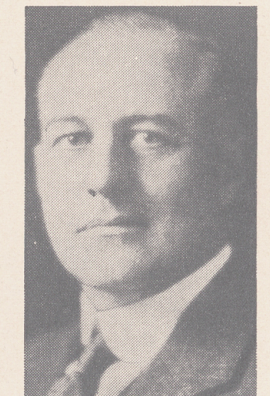
"PAT" O'BRIEN



WM. A. QUIGLEY



KENT ALLEN



CHAS. S. HOWARD



**RANCHO ATTRACTS PEOPLE
OF PROMINENCE**

They can't all be wrong, these people of discriminating taste, who have chosen Rancho Santa Fe for their home place. Let us analyze what they saw that resulted in their selecting Rancho Santa Fe in preference to other country communities in southern California.

Climatic Comfort: First in the list perhaps should be climate. The U. S. Weather Bureau rates the coastal region of southern California as "tops" in perfection of climate. Rancho Santa Fe rates a shade higher than most of the coastal belt, for it is close enough to the ocean to get full value of its tempering breezes, yet sufficiently removed to escape most of the fogs that at some seasons hang heavy along the sea shore. The mild winters and cool summers make every month one of comfort.

Natural Beauty: To see Rancho Santa Fe is to fall in love with it. The gently rolling hills covered in part with forests of eucalypti, in part with groves of oranges and lemons, or graced with pleasing dwellings, offer panoramas attractive in every direction. Protective restrictions and architectural control have insured a character of improvements which makes of each new residence an additional jewel to the landscape.

The beautiful all grass golf course, running east and west through the heart of the community, adds greatly to the natural charm of the native terrain.

Personnel of Residents: It is only natural that those who have been attracted by the beauty and the quiet of a community, should be people of culture and discriminating tastes. It is also natural that they should be kindred spirits, finding much satisfaction and

pleasure in each other's society. And so the personal side of community life, its social contacts, have proven rich in the friendliness of neighborly activity.

Commercial Possibilities: Provided that proper care is given to the selection of land and to the planting and maintenance of trees, the production of sub-tropical fruits, especially citrus, can be and has been quite profitable. Three hundred and sixty carloads of citrus out of Rancho Santa Fe in 1936 is ample evidence of the productivity of its orchards. These groves are not yet mature and when the present plantings have reached their peak, their yield may be over 500 carloads a year. Land as yet unplanted can in time swell this harvest until the Rancho becomes one of the most important fruit centers in San Diego county. Profits in 1936 in some instances reached as high as \$500 per acre.

Recreational Facilities: Chief among these is our splendid golf course, which is described in another article. Horseback riding attracts many, and Dave Willoughby maintains a riding academy with many horses available for transient guests. Tennis courts are numerous, and there are several private swimming pools. The beach and pool at Del Mar, just ten minutes away, is a rendezvous for our people from May to October.

Not Isolated: Although the quiet and tranquility of country life is a continual joy, excellent paved roads lead to the nearby coastal shopping centers; San Diego is but thirty minutes away, and Hollywood only three hours.

And so, perhaps, these are the reasons why leaders in the business and artistic world, have chosen Rancho Santa Fe. May there be many more of them to come!



Top—Hotel La Morada at Rancho Santa Fe famous for its cuisine and the quiet and comfort of its accommodations.

Center—Bing Crosby with two of his thoroughbreds, "Cousin Fanny" and her unnamed colt by "Crystal Penant."

Bottom—The beach and pool at Del Mar, 10 minutes away, is rendezvous for our people from May to October.

Top—Just one of the many beautiful views that greet you about the grounds of Bing Crosby's country home at Rancho Santa Fe.

Center—Hotel Del Mar, center of social activities during racing season. Special orchestra will play for dinner dances.

Bottom—Charming vista of orchards and rolling hills seen from the terrace of Hotel La Morada.

LIFE IN RANCHO SANTA FE



A fine cluster of Rancho Santa Fe oranges! R. E. Badger reports 1936 cash returns to Rancho orange and lemon growers totaled \$366,216.29, and, despite the cold wave last winter, it is hoped that 1937 returns will equal this amount.

Rancho Santa Fe is particularly adapted to lemon plantings as its climate results in a large amount of high quality fruit ripening in time for the summer market.

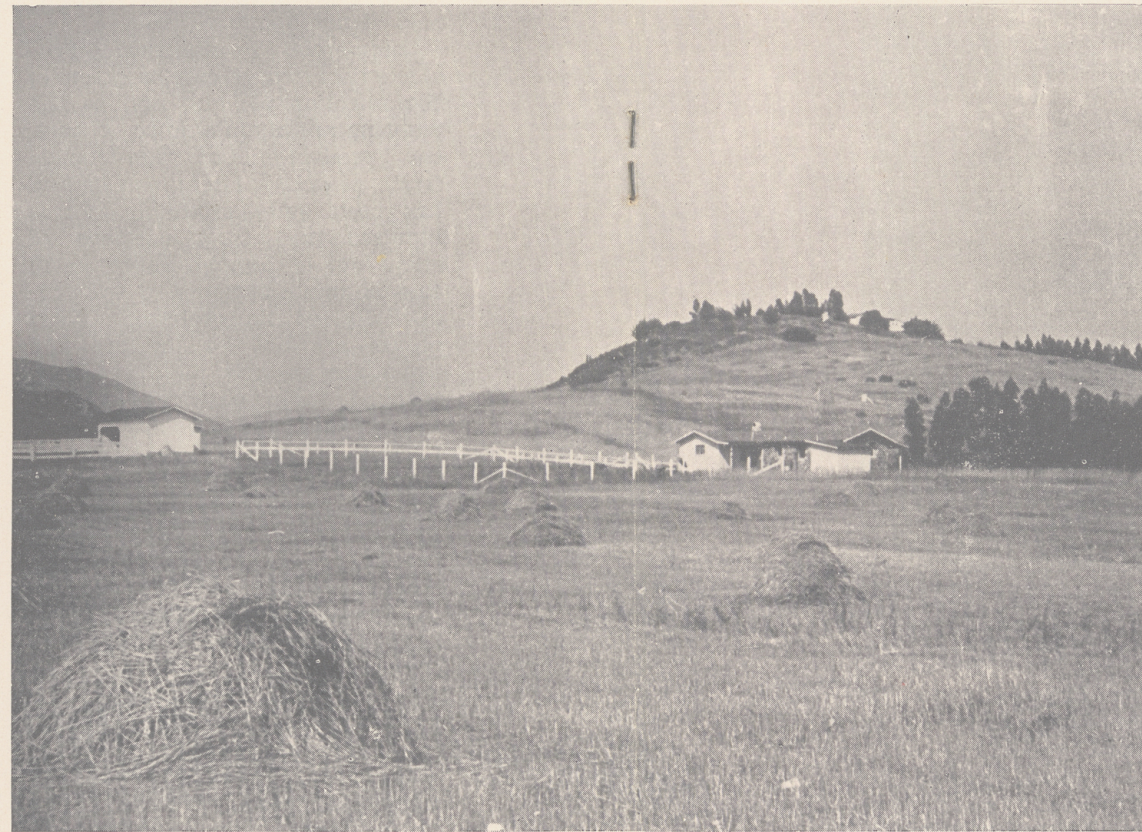
There are in Rancho Santa Fe 1,544 acres of bearing orange trees and 300 acres of lemons. Truly, a rich agricultural community.

(||||)

RANCHO STOCK FARMS

Howard Hawks, motion picture director, has made arrangements to bring a number of brood mares and foals to pasture on Douglas Fairbanks lands in Rancho Santa Fe.

Selection of Rancho Santa Fe for location of breeding farms by Bing Crosby, Chester Wyvell, and R. A. Wood shows the value of the Ranch for this purpose, and a number of excellent sites are still available.



"La Madrina", home of Mr. and Mrs. John Robertson, viewed from his pasture lands and stable. Mr. Robertson is a prominent motion picture director and Mrs. Robertson is a scenario writer of note. Mr. Robertson's estate consists of 130 acres, largely planted to oranges and lemons. An enthusiastic horseman, as well as orchardist, Mr. Robertson takes great pleasure in spending time between pictures in riding over his property, inspecting his groves and generally supervising their care. Rancho Santa Fe is becoming increasing-

ly popular with motion picture people. Its quiet and natural charm is a welcome relief to the pressure of studio life. Among Hollywood celebrities who have bought properties at Rancho Santa Fe are: Joseph M. Schenck, head of 20th Century Fox; Bing Crosby, Douglas Fairbanks, Corrinne Griffith, Sidney Sutherland, scenario writer; Thomas Moulton, J. Theodore Reed, director; William Darling, art director; and George Lewis. The latest recruit to the Rancho is Oliver Hardy, of the famous comedy team of Laurel and Hardy.



DEL MAR RACE PATRONS INVITED TO PLAY ON GOLF COURSE AT RANCHO SANTA FE

Rancho Santa Fe Golf Course is issuing a cordial invitation to patrons of the Del Mar Race Meet to make use of the privileges of its course. Guests may play at any time for a \$1 Greens fee.

The Rancho golf course is one of the finest in all California. Eight-

teen Holes all grass, it was laid out by Max Behr, considered among golf fans as the master strategist of golf course architects. Behr also designed the famous Lakeside Course at Hollywood. The course

(Continued on Page 10)

(||||)

MOTION PICTURE STAR BUYS ORANGE GROVE

Messrs. Nelson and Joers report the sale of the Fairchild orange grove to Oliver Hardy, motion picture star.

They also report a sale of the Boettiger residence to Mrs. Florence Perley Wood, of Pasadena.

Recently they completed sale of the Harlan cottages to Mr. and Mrs. Paul Bussey.

(||||)

RODENT CONTROL

Poisoned grain for ground squirrel control is being furnished by the county agricultural commissioner's office and is being distributed in this area by R. E. Badger, horticultural contractor.



NO LOVELIER SIGHT CAN BE FOUND THAN THIS VIEW OF THE SAN DIEGUITO VALLEY. ACROSS THE RIVER, LIES THE FAMOUS RANCHO ZORRO, OWNED BY DOUGLAS FAIRBANKS. IN THE DISTANCE, ON A CLEAR DAY, ONE SEES MOUNTAIN PEAKS IN OLD MEXICO. BRIGGS C. KECK, OWNER OF THIS VANTAGE POINT, HAS HERE A GROUP OF CHARMING HOME SITES, WHERE HE WHO BUILDS, SHARES FOREVER THIS GEM OF SCENIC BEAUTY

DEL MAR JOCKEY CLUB

William Le Baron is President of the Board of Governors of The Del Mar Jockey Club and one of the leading executives and outstanding figures in the Motion Picture World. Mr. Le Baron symbolizes fairness in sport and interest in his fellow man. And his well known enthusiasm for the Sport of Kings he gladly shares with the Del Mar Turf Club. Associated with Mr. Le Baron are some of Hollywood's most popular leaders, a fine group of delightful personalities, all imbued with the spirit of true Sportsmanship.

The Board of Governors of the Del Mar Jockey Club are: Wm. Le Baron, President; Pandro S. Berman, Harry Cohn, Howard Hawks, Louis D. Lighton, George Raft, Bogart Rogers, Wesley Ruggles.

OFFICIALS OF TURF CLUB

J. KINGSLEY MACOMBER C. H. R. S. Steward	H. H. MORRISON Racing Secretary
JOHN MALUVIUS Placing Judge	CLAY FUETT Starter
EDWARD DEAN Manager of Mutuels	CHARLES A. HARTWELL Associate Steward
W. A. QUIGLEY Presiding Steward	BARRY WHITEHEAD Placing Judge
EVERETT N. CROSBY Secretary and Treasurer	



BROWN JADE

Pride of William LeBaron's Extensive String. Brown Jade is one of the most sensational runners in America and to her was awarded a signal honor recently when William LeBaron changed his stable colors to Brown and Jade.

DEL MAR TURF CLUB STAKE RACES

Date	Event	Value	For	Distance
July 3, 1937	San Diego Handicap	\$1000 added	3 yr olds and up	6 Furlongs
3,	Del Mar Inaugural Handicap	\$2500 added	3 yr olds and up	1 1/16 miles
5,	Independence Day Handicap	\$2000 added	3 yr olds and up	1 1/16 miles
5,	Coronado Handicap	\$1000 added	2 yr olds	5 Furlongs
9,	Motion Picture Handicap	\$1000 added	3 yr olds and up	1 mile
10,	Rancho Santa Fe Handicap	\$1000 added	3 yr olds and up	6 Furlongs
10,	La Jolla Handicap	\$1500 added	3 yr olds and up	1 1/16 miles
17,	Long Beach Handicap	\$1500 added	3 yr olds and up	1 1/16 miles
17,	Chula Vista Handicap	\$1000 added	2 yr olds	5 1/2 Furlongs
24,	Oceanside Handicap	\$1000 added	3 yr olds and up	6 Furlongs
24,	Laguna Beach Handicap	\$1500 added	3 yr olds and up	1 1/4 miles
31,	Carlsbad Handicap	\$1000 added	2 yr olds	6 Furlongs
31,	Escondido Handicap	\$1000 added	3 yr olds and up	6 Furlongs
31,	Del Mar Handicap	\$5000 added	3 yr olds and up	1 1/16 miles

INAUGURAL RACE MEET

(Continued from Page 1)

Turf Club.

Built within the proverbial stone's throw of the mighty Pacific, and within a short distance of mountains, rugged and inspiring, the track of The Del Mar Turf Club is unique, in several more ways than one. Let's take, for a single example, its accessibility:— It can be reached via FOUR MAJOR VEHICLES OF MODERN TRANSPORTATION — Motor Car, Train, Airplane, and Yacht. And all four are sure to be used by visitors to The Del Mar Turf Club's beautifully-appointed racing establishment.

The Club House

Visitors to Del Mar's race track will find an efficiently-constructed Club House, interhousing The Del Mar JOCKEY Club, a social organization that fits snugly and pleasantly into the same social frame as does The Turf Club at Santa Anita, and one that has William LeBaron for its president. In the salons of The Del Mar JOCKEY Club will be seen the elite of the Screen and the Social World. Lounging rooms, cocktail bars and dining rooms will be there for the comfort and pleasure of the patrons. And in the Club House the Board of Directors will have their chambre de conference, and there, also, William A. Quigley, Director of Racing, will have his private office. Thirty-five hundred persons can be taken care of in the Club House, from which an unobstructed view of the track may be seen.

The Grandstand will comfortably seat more than 4,000 persons, this in addition to the seating capacity of 60 odd boxes. Scattered about for the convenience and pleasure of visitors will be several Concessionaire booths, at which coffee, sandwiches, liquors and sweets, as well as cigars and cigarettes will be served; these booths in addition to the dining rooms, both indoors and outdoors. And those who occupy the Grandstand will experience no difficulties in reaching the paddock.

Patrons of The JOCKEY Club and The Club House proper will find courteous and prompt service awaiting them at the mutuel windows; the same will apply to The Grandstand.

600 Fine Horses

The Adobe barns, unique and modern, will surely "catch" the eye of visitors to Del Mar's Race Track. In these barns more than 600 horses will be quartered, carefully selected horses, ready to run. Prominent owners of truly great thoroughbreds have reserved stalls at Del Mar, and patrons may rest assured of high class racing from the first day to the last. Visitors to Del Mar's Barn Area are sure to make note of the comforts provided for the grooms and others, whose duties require their presence almost all the time; the living quarters of these men being one story above ground level, with shower baths ever at their disposal.

Over in the Barn Area at Del Mar one finds a "miniature city," which includes a "Boarding House," where more than 1,000 men are fed daily, a drug store, a barber shop, a post office, and a huge blacksmith shop.

Among modern racing establishments The Del Mar Turf Club stands a bit apart, for its builders have gone a bit farther than most. First, the Placing Judges will work from atop the roof of the Grandstand, something new for the great State of California, and for every race track in the country, save a scattered few. And at Del Mar you'll find no obstructions, between your eyes and the "tote" board, large and conveniently placed in the infield, for in striving to make sure of an unobstructed view for the patrons, the Stewards' "pagoda" was built upon the INFIELD.

Photographic Camera

Del Mar's race track is second to none, where mechanism is concerned, for there you'll find a totalizer, the word after the last word in accuracy, in the computation of prices and pools. And the "Photographic Camera" will take care of close finishes, too close, perhaps, for the human eye.

The builders of Del Mar's race track feel justly proud of The Press Box atop the grandstand. The "box" measures 35 by 20 feet, and through its glass front will peer your favorite writers of the turf. A veritable bee hive, the Press Box of The Del Mar Turf Club, for in addition to the large corps working at top speed in order that the racing public be served promptly, there will be The Public Address System, and The Placing Judges' booth, as already told. The Pacific

Daily Racing Form's booth will be included in The Press Box setup; and somewhere nearby The "Dark Room", for the development of pictures taken by the "Photographic Camera".

Before going on to the telling of "stories" having to do with The Plaza of The Del Mar Turf Club, let me say more than a few words about The Secretary's Office. This building, which will "house" offices for the Stewards, and for the attaches of the Secretary's Office, as well as quarters for the jockeys is, like all the other buildings, made of adobe, staunchly built and attractive to the nth degree. It is large and well lighted, and the equipment is well chosen. The "Jocks" are well taken care of. They will don silks in quarters measuring 150 feet by 50 feet, one of the largest rooms ever occupied by jockeys at a race track. And jockeys in silks, but not riding, may witness races from a huge balcony overlooking the track. The outdoor saddling paddock, which may be seen from The Club House, is quite near the Secretary's Office.

The Plaza is "set off" by a beautiful fountain and several score of huge palm trees, together with flowers and flowering plants in greatest profusion. A bit borrowed from Nature's masterpiece, is The Plaza!

Ample space for the parking of automobiles has been reserved by those who "laid out" Del Mar's racing establishment, and military-like precision and lack of chaos will be the order of procedure.

NEW HIGH SCHOOL

The \$300,000 plant now under construction for the San Dieguito Union High School District, of which Rancho Santa Fe is a part, is an innovation in that it is an adaptation of the University idea in building arrangements. The new school, which will be completed this fall, consists of detached classroom structures, which, with gymnasium and administration buildings, will form a typical campus quadrangle.

Miss Lillian J. Rice, Rancho Santa Fe architect, used her former experience as a teacher to incorporate into her designs all that makes up present day educational standards.

The school will be fully accredited by state universities.

HOW TO REACH TRACK

(Continued from Page 1)

track. And between Highway 101 and the track is the Main Line of The Santa Fe, which will run special trains from Los Angeles for special events. Racing days are Tuesday, Wednesday, Thursday, Friday and Saturday of each week during July. (Throw in Monday, July the 5th, for good measure). Airplanes may land their passengers within 600 feet of The Main Gate of the adobe wall surrounding the track and buildings of The Del Mar Turf Club. And sea craft may anchor within a few yards of Del Mar's foam-sprayed beach.

Scenes Of Beauty

If you elect to make the journey to Del Mar by motor car you'll come into association with scenes of matchless beauty, for you'll drive through the famous Citrus Belt of California—which is on the route from Whittier to San Juan Capistrano. And you'll see, at close range, the ever restless waters of The Pacific—rivalling in changing colors the Mediterranean at Cannes; the coral reefs of Bermuda. And not far away one may see the towering, snow-capped Sierra Range; at whose feet are countless acres of golden-hued orange trees, swaying gently under a benign sun.

To make this enchanting journey by motor car you have choice of two roads (both Highway 101)—one Highway 101, proper—and the other "Alternate" Highway 101. These Highways come together at San Juan Capistrano Beach. Alternate Highway 101, brings you through, or outside, as you choose, Long Beach, Huntington Beach, Newport Bay, Laguna Beach, and Dana Point, and then joins up with Highway 101 proper at San Juan Capistrano Beach, as already told. Following this "reunion" at San Juan Capistrano Beach Highway 101 runs through San Clemente, Ocean-side, Carlsbad, Encinitas, Cardiff and Solana Beach, and there lo and behold Del Mar looms up! Highway 101 proper runs through Montebello, Whittier (go out Whittier Boulevard from Los Angeles) Fullerton, Anaheim, Santa Ana, Tustin, and on to San Juan Capistrano. And shortly afterwards you'll find yourself and companions at Del Mar, "Where The Turf Meets The Surf".

BEACON INN ENGAGES THE NOVAK SISTERS

The Beacon Inn, located on Highway 101, just two miles north of the race track has been modernized by Moe Goldie. The Novak sisters' orchestra provide the music for nightly dinner dances. The Inn and cocktail bar will probably be a popular place during the racing season.

Santa Fe Trains

The Santa Fe will run special trains daily from Los Angeles, for a fast, pleasurable run to within a few yards of the Main Gate at Del Mar's race track. Commercial bus lines will run specials from Los Angeles and points en route to Del Mar; also from San Diego to Del Mar. Airplanes will "take off" for Del Mar from several fields, including Burbank.

Vacationists and others, alike, will find Del Mar and the cities surrounding en fete during the month of July, with bathing, golfing and horse racing indulged in, probably in that order, by almost everybody. Bathing in the Pacific, golfing at Rancho Santa Fe, at La Jolla, at San Diego, at Coronado, and other places, in the mornings, and horse racing in the afternoons at Del Mar, a dream of Paradise come true!

SOIL CONSERVATION

Volant V. Ballard, orchard contractor, represents Rancho Santa Fe in connection with the 1937 agricultural conservation program of the U. S. Department of Agriculture. He has been instrumental in having many Rancho orchard owners file papers under the program, placing them in a position to receive cash benefits for planting cover crops or performing other soil building practices. Mr. Ballard states that he will be glad to furnish information to those interested in the program, and assist in preparing working papers.

COAST DISPATCH INSTALLS LATEST TYPE PRESS

This issue of the Rancho Santa Fe News, 15,000 copies, was printed by The Encinitas Coast Dispatch on the "Craftsman Press" the last word in printing machinery. We congratulate The Coast Dispatch on the quality of work turned out.

PLAY GOLF AT RANCHO

(Continued from Page 7)

is only five miles from the race track by paved roads.

Par for the course is 72, made up as follows:

Out			In		
Hole	Yards	Par	Hole	Yards	Par
1	407	4	10	311	4
2	415	4	11	453	5
3	160	3	12	437	4
4	585	5	13	390	4
5	437	4	14	185	3
6	390	4	15	400	4
7	93	3	16	393	4
8	455	5	17	166	3
9	365	4	18	511	5

Out	3307	36	In	3246	36
In	3246	36			

Total 6553 72

With markers set at the backs of the tees for tournament play the length is 6900 yards.

Glenn D. Gibbons, professional, and E. G. Border, superintendent, are arranging to take special care of Del Mar patrons during the summer season. Special events for owners, trainers, jockeys, et cetera, are being planned.

Mention might be made again of the Professional-Amateur Tournament sponsored by Bing Crosby in February. Despite the cloudbursts which occurred the day the tournament was to start, causing it to be postponed one day, some remarkable scores were turned in. Sam Snead, who has made all sit up and take notice this year, shot a 68—4 under par. Other low scores were Geo. Von Elm, 71; Henry Picard, 74; Henry Dodson, 74; Jim Fogarty, 74. It is rumored that Mr. Crosby will repeat again next winter. If so, it will be an event worth travelling miles to see.

"THE OLD FARM"

Eggs, milk, poultry, veal, tomatoes, and of course oranges, lemons, and avocados are all supplied to Bob Francisco's Rancho grocery from local sources. Further versatility of near-by agricultural endeavors furnishes berries, cucumbers, cabbage, cauliflower, carrots, new potatoes, squash; and wine from Escondido wineries.

For Your Information

Editor's Note:—Confusion exists in the minds of many property owners as to jurisdiction over various local affairs. To clarify this we submit the following information:

The Park and Recreation Board has jurisdiction over all parks and properties owned by the Association including the Golf Course. It also has control of all ornamental tree plantings within 25 feet of street lines.

The Art Jury passes on all plans for buildings and also on resubdivision of properties.

The Association Board of Directors has jurisdiction over all other matters in connection with the covenant.

The Maintenance District Committee has jurisdiction over the public highways, planting and trimming of trees therein, signs, etc.

RANCHO SANTA FE ASSOCIATION Officers and Directors

President Barton Millard
 Vice President Glenn A. Moore
 Directors—R. E. Badger, L. L. Fox, J. C. Smillie.
 Secretary S. R. Nelson
 Building Commissioner S. R. Nelson
PARK AND RECREATION BOARD
 M. E. Harrison, A. B. Wells, Clifton Williams.

ART JURY

John Burnham, L. J. Rice.
RANCHO SANTA FE MAINTENANCE DISTRICT COMMITTEE

L. L. Fox, R. E. Mann, J. C. Smillie
RANCHO SANTA FE GARDEN CLUB
 President Mrs. Norman Carmichael
 Secretary Mrs. Ruth Nelson

RANCHO SANTA FE BOOK CLUB
 President Mrs. W. A. Smart
 Vice President Mrs. G. S. Harris
 Secretary Mrs. H. A. Porter

RANCHO SANTA FE COUNTRY CLUB
 President W. A. Bechberger
 Vice President D. M. Bakewell
 Secretary R. M. Clotfelter

RANCHO SANTA FE SCHOOL BOARD
 Dr. C. Bertschinger, Ranald Macdonald, A. L. Wick.

SANTA FE IRRIGATION DISTRICT
 President A. W. Gilbert
 Dr. Carl Bertschinger, Ira Conner, Joseph

Coulombe, W. A. Smart.
 Secretary-Manager D. M. Bakewell
 Assessor and Tax Collector
 W. A. Bechberger
 Deputy Sheriff Albin Pelko
 Telephone Rancho Santa Fe 3411.

GRADUATES CELEBRATE

Celebrating the graduation of the initial class of the new San Dieguito union high school, the Greater Encinitas club presented a "stag dinner" for the young men of the class on Friday, June 4th, at "George's," famous highway restaurant.

George Wilkens, president of the student body, accepted on behalf of the class, the greetings of the club extended by president Moxness.

The speaker of the evening, Attorney Maurice M. Myers, held the interest of the gathering with an address filled with humor and thought.

Upon termination of this talk, the group adjourned to the La Paloma theatre in Encinitas, where an entertaining program rounded out a very enjoyable evening.

WELCOME HOME

This is home coming month for numerous college students living at Rancho Santa Fe. Jane Williams and Maury Ginn will be returning from U. C. L. A. Charles Nelson has already returned from University of California, at Berkeley. Miss Peggy Rule is coming home from Park Manor and O. Rey Rule, Jr., from Harvard Military school. Miss Natalie Millard has been attending the Stanford University. John Megrew has just returned from State College at Chico, Calif. The Rancho extends a hearty welcome to the returning students.

BUILDING NOTES

Lilian J. Rice, architect, reports the Morris Townley residence is nearing completion. Construction work has started on the Meyer residence, and the frame work already erected shows it to be quite an imposing structure. Applications have been filed for a six room cottage for Mr. Frank Burnaby, of Beverly Hills, and for an addition to the residence of Mr. and Mrs. Norman Carmichael. Plans are being prepared by Miss Rice for the local Garden Club house and also for a residence for Mr. and Mrs. Albin Pelko.

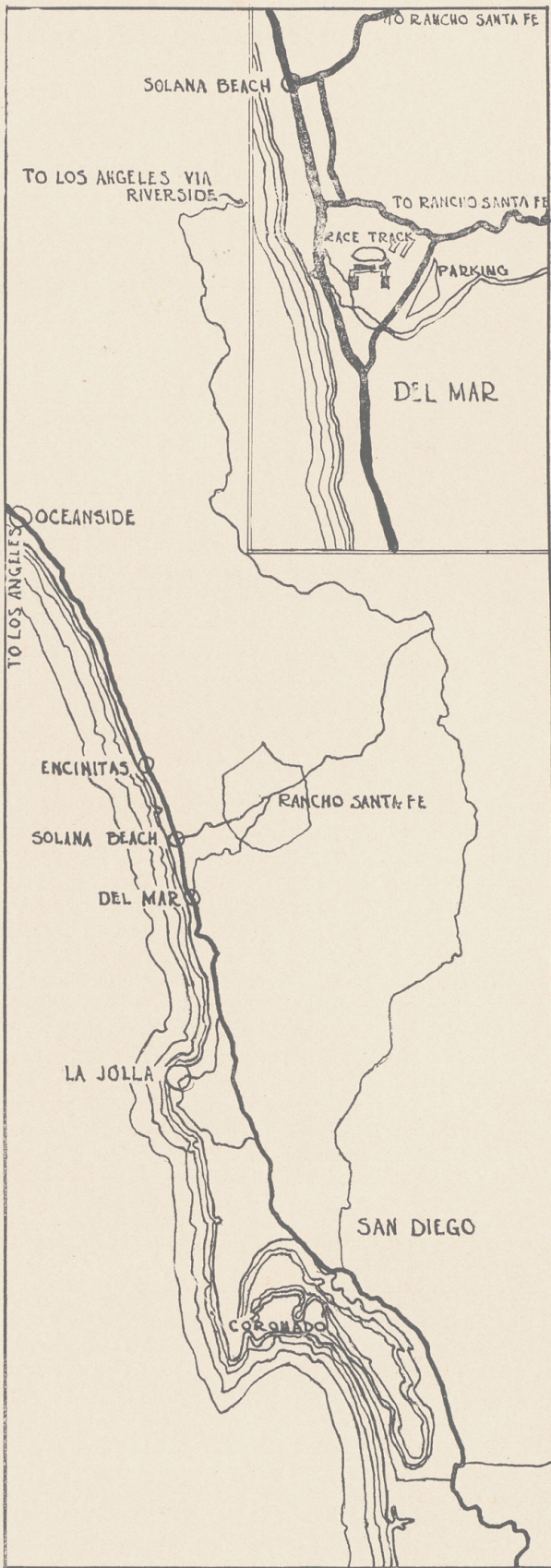
CHAMBER OF COMMERCE HAS AMAZING GROWTH

The San Dieguito district chamber of commerce, representing the communities of Rancho Santa Fe, Encinitas, Del Mar, Solana Beach and Cardiff, has increased its membership 60 per cent since its annual meeting in January of this year. The chamber now has the largest membership in the county outside of the San Diego chamber of commerce, and wields considerable influence in county affairs. Under the leadership of O. A. Moxness, president, the chamber has functioned to bring about numerous improvements for the San Dieguito district. Chief among these are road improvements.

Membership is only \$3.00 per year and all property owners should consider this a cheap price to pay for the excellent services performed for this district.



Shady Rancho
 Lanes Lure
 the Horseback
 Rider



WHO! WHAT! WHEN! WHERE! WHY! HOW!

Facts, and such, having to do with the 22-day race meeting of The Del Mar Turf Club, which will get under way on Saturday, July the 3rd. and come to a close on Saturday, July 31st.

Place—Del Mar, California.

("Where The Turf Meets The Surf")

Dates—Saturday, July 3rd to Saturday, July 31st, inclusive.

Horses under roof—600.

Stake Events—FOURTEEN.

Feature of Feature events—The Del Mar Handicap — \$5,000 added, and THE MOTION PICTURE HANDICAP.

MOTION PICTURE HANDICAP — FRIDAY, JULY 9th.

(Horses owned by persons directly connected with the Motion Picture Industry only are eligible for THE MOTION PICTURE HANDICAP.)

THE DEL MAR HANDICAP—Saturday, July 31st.

Cost of Del Mar Turf Club's Racing establishment—\$1,000,000.

Distance from Los Angeles—100 miles.

Distance from San Diego—20 miles.

Daily Program—EIGHT RACES.

POST TIME—2:15 P. M.

Transportation facilities — MOTOR CAR, TRAIN, AIRPLANE, YACHT AND BOAT, and by BUS.

Main artery of travel, by Motor Car — HIGHWAY 101—from Los Angeles and San Diego and points in between.

Seating Capacity of Grandstand—4,000 persons.

Accommodations in CLUB HOUSE for 3,500 persons.

Parking Accommodations for 5,000 cars.

Landing Field—within 600 feet of MAIN GATE.

SANTA FE TRAINS AND MOTOR BUSES DIRECT TO RACE TRACK.



Meeting to be held under the supervision of the CALIFORNIA HORSE RACING BOARD
Carlton F. Burke, Chairman

John A. McNaughton

William P. Roth

The Rancho Santa Fe News is published monthly by S. R. Nelson and F. W. Joers. T. S. Reed, Assistant Editor.

Detailed information regarding Rancho Santa Fe properties and rentals can be secured by writing Nelson & Joers, Rancho Santa Fe, Calif. Extra copies of this issue will be mailed upon request.