

If it's an unobstructed vista of the blue Pacific you're after, you need look no further than the lovely "Inn at La Jolla," one of the San Diego area's finest and most comfortable motor resorts. Every room gives a spectacular ocean view, for the Inn is perched on a bluff with nothing but its own grounds between it and the sea.

Owner Bob Haniman has tastefully decorated the Inn in colorful Early American. The lobby, in particular, is a charming and attractive spot, with one of the largest fireplaces in this area—a beautiful red brick affair with a 14-foot hearth, dominating the room. It also has large-screen TV and wonderfully brewed complimentary coffee, always hot and ready to serve.

Opening from the lobby is the ocean terrace, a spot from which you get an exceptionally fine view of the entire coastline. There's a telescope here for the curious and chairs for those who just like to laze in the sun.

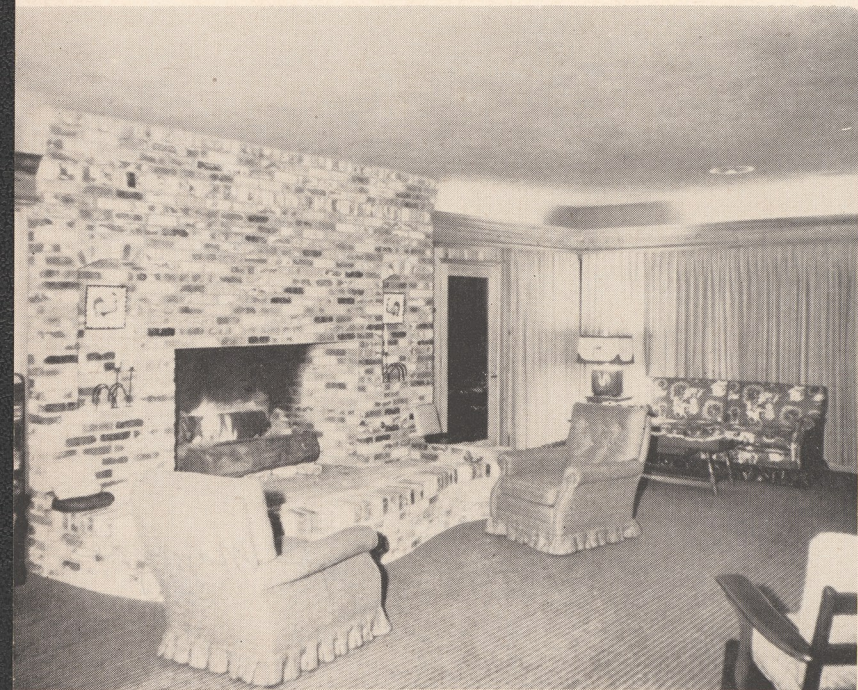
The swimming pool in the beautiful patio terrace is kept at a constant 78 degrees.

Hotel rooms, start at \$7 double, \$8 twin beds. Studio units with kitchen, living room-bedroom, start at \$8.50 a day up, \$55 a week. Suites at quoted prices. Rates are slightly higher during the summer season, June 15-Sept. 15.



## THE INN AT LA JOLLA

SCHNEIDER-PELTCHER





Camelia Cottages

## THE INN AT RANCHO SANTA FE

For a holiday, anytime of the year, there's no place quite like Rancho Santa Fe and its comfortable, delightful Inn. Rancho Santa Fe is a planned country community of great natural beauty famed for its large estate homes, its resort facilities, and its climate. It is five miles inland from the Coast at 101 near Del Mar and Solana Beach, 100 miles from Los Angeles and 25 miles from San Diego.

Rancho Santa Fe is a restricted community. To preserve its quiet charm, the use of property as well as the type of construction is controlled by an Art Jury of the community itself. The Inn at Rancho Santa Fe, which accommodates around 90 guests, is situated in the center of this unique village in one of the loveliest hotel settings in California. Stately eucalyptus trees and year-round blooming tropical flowers and rare plants provide a backdrop for the swimming pool, the tennis and badminton courts, and the charming cottages, scattered throughout the grounds in secluded gardens of flowers and trees.

The Inn offers rooms in either the main building or in

detached guest cottages. The rates for single rooms start at \$12 in the Inn proper, double rates from \$12 to \$22 (cottages from \$16 to \$22), with suites available up to \$32.50. Some of the cottages have a fireplace, kitchenette, breakfast bar and private sun terrace. The dining room, overlooking the pool, serves exceptionally fine food. A bar and cocktail lounge is maintained for the use of the guests.

There's much to do in the way of sporting activity at the Inn and on the Ranch. The championship 18 hole golf course a few minutes away is known throughout Southern California. Excellent horses from a near-by stable permit guests to ride over many miles of well kept bridle paths or the open country. On the grounds, there is year round swimming in the heated outdoor pool, and tennis and badminton courts, shuffleboard, lawn bowling, and a 4000 book library. Ocean bathing and surf fishing at Del Mar, five miles away.

The Inn station wagon meets all trains and planes upon request.

*from July-August 1953 issue of San Diego Magazine*