

ASSOCIATION BULLETIN

PUBLISHED BY THE RANCHO SANTA FE ASSOCIATION FOR THE BENEFIT OF ITS MEMBERS

Volume 6, Number 2

Rancho Santa Fe

February, 1959



Winter sports, Rancho Santa Fe style: With wintry storms reported elsewhere in the nation, Ranch residents enjoy an afternoon of bowling on the green at the Inn (See page 4)

In This Issue

Board Meetings

Art Jury

Country Friends

Organization Chart

Rummage Sale

Ranch School

BOARD MEETS JAN. 16

New Rate Set for Course Use By Private Golf Carts

A motion that players using privately owned electric carts on the Rancho Santa Fe golf course be charged at the rate of \$3.00 per round or \$50.00 per calendar quarter, payable in advance, was carried unanimously at the January 16th meeting of the board of directors of the Rancho Santa Fe Association.

The \$50 quarterly fee protects local Cart owners by providing unlimited family use for \$3.80 per week.

The Board also approved Dr. Herbert Willy Meyer's recommendation that the following persons be named to serve on the Association's health and sanitation committee: Hubert Brooke, R. M. Clotfelter and William Schofield.

W. A. Smart was re-appointed manager of the Rancho Santa Fe Association for the year ending December, 1959.

President Booth was authorized to execute the lease between the Association and the county of San Diego covering rental storage space in the new Rancho Santa Fe maintenance building, and to change the roof material on the building from shingles to shakes at a cost of \$965.

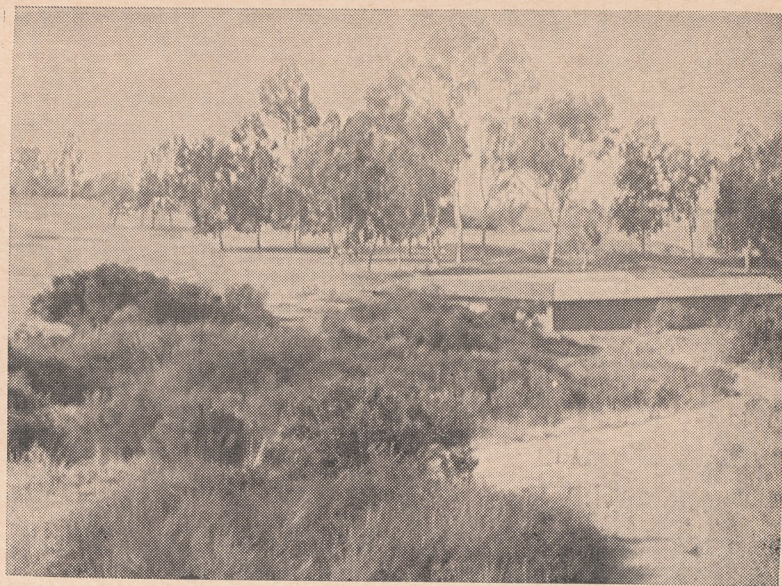
The application of R. Q. Fel-

lows for subdivision of his property on Via de Fortuna into two parcels was approved, with the proviso that an agreement be filed in favor of the Association granting a 5-foot easement along each property line for sewer and —or water lines. The application of T. A. L. Loretz to revert three parcels into one, also on Via de Fortuna, was approved.

Deferred, pending further study were three applications for subdivision. They were filed by Major General K. McNaughton, on Paseo Delicias; Robert Keith on Las Planideras; William Drew on La Madreselva.

The board also directed Secretary Smart to secure gasoline contract bids for gasoline used by the Association maintenance department from not fewer than five suppliers.

Secretary Smart presented the following gross revenue figures for December, 1959: Green fees, cash \$4232, playing privileges \$3132, total \$7364. Golf shop, carts \$1511.50, cleaning and storage \$322, merchandise \$3807.51, total \$5641.01. Restaurant and bar \$4954.32. Grand total \$17,959.33.



BLENDS INTO THE LANDSCAPE — The Association's new maintenance building on the golf course serves an essential function. Part of it is leased to the county for storage.

Edward D. Havens Passes Jan. 13 After Brief Illness

Edward Dunne Havens, who passed away January 13, is being mourned by friends on the Ranch.

He had suffered a brief illness, and was at Palomar Memorial Hospital, Escondido.

A retired North Island Naval Air Station supervisor, Mr. Havens was a member of the Air Mail Pioneer Service, an organization which aided the Post-office department in its first air mail deliveries.

He was a past president of the Bar-O Riding club.

Survivors include his widow, Edith; a son, Edward Jr. of Alamogordo, N. M.; a daughter, Mrs. William Stone of Solana Beach, and six grandchildren.

Mr. Havens was an enthusiastic horseman and member of the Rancho Santa Fe Riding Club. He was particularly interested in the Junior Riders group, and assisted their activities in many ways.

With Mrs. Havens, he also served as a co-chairman of the Garden Club's bridge committee.

New Committees Strengthen Association

Community Plans, Parks & Recreation Groups Function

New committee assignments made by the Association's board of directors will aid in coordinating the area's growing number of activities and in solving future community problems.

This is the objective of recent board actions which now result in a new streamlined organization chart for all Association committees and functions.

Reproduced herewith, the new organization chart is not yet complete with respect to all committee assignments, but it offers an instructive outline of Association functions and relationships.

The newly-formed community planning committee will aid the board of directors in studying particular phases of both current and future community developments and problems.

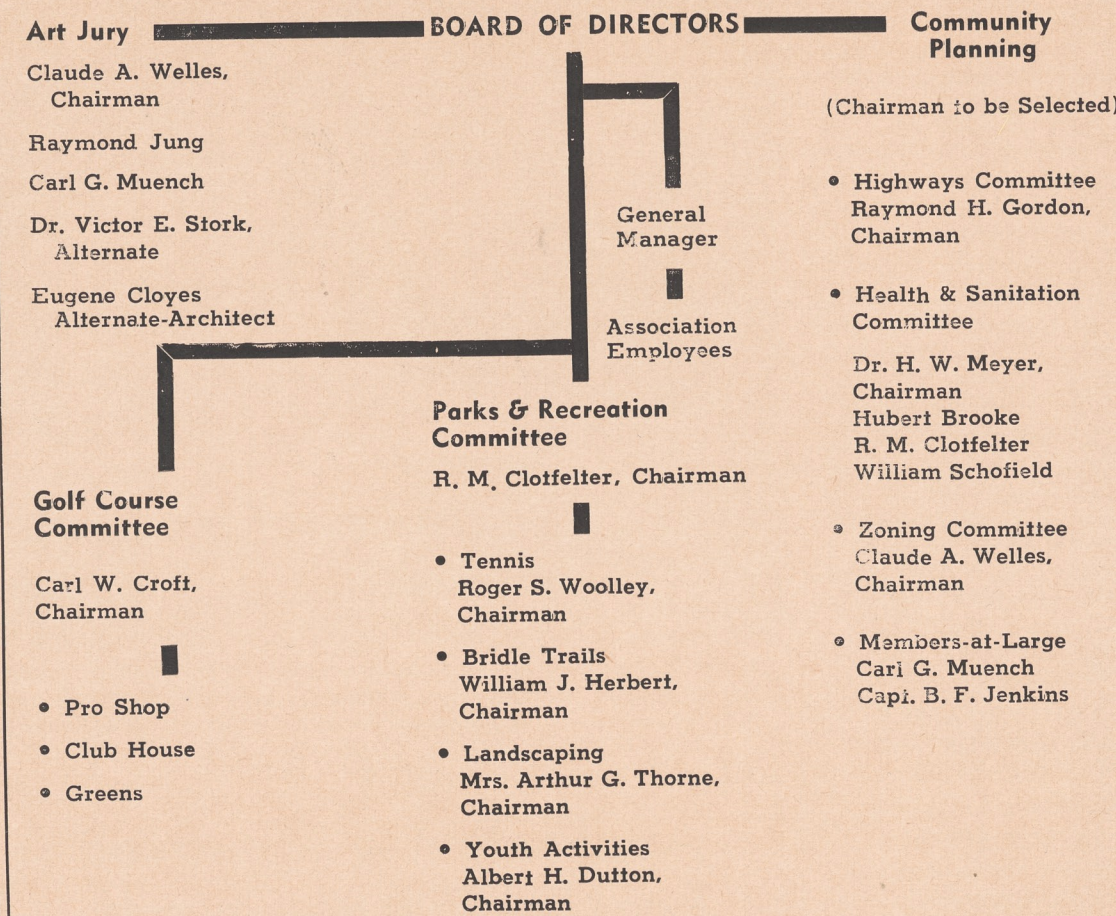
This new group is an outgrowth of the Citizens' Committee for Mangore Studies, instituted over a year ago under the able chairmanship of the late George Richardson.

Upon completion of two studies by the Mangore Corporation of Los Angeles, and corollary studies by the several Mangore subcommittees, it was felt that a continuing coordinating body was needed to consummate the work already accomplished.

As set forth in the organization chart, five men constitute the community planning committee. Three head specific sub-committee functions — health and sanitation, highways and zoning — and two more will serve as members-at-large.

Problems associated with the business district and with parking are to come under the purview of the zoning sub-commit-

ORGANIZATION CHART



Watch Your Weather

RANCH TEMPERATURES MAKE WINTER WONDERLAND

Date	Min.	Max.	Date	Min.	Max.
Dec. 16	58	73	Jan. 1	54	68
17	54	72	2	58	64
18	50	68	3	54	63
19	58	70	4	49	62
20	48	67	5	51	58
21	50	64	6	55	61
22	57	64	7	51	62
23	54	64	8	54	64
24	49	62	9	53	65
25	49	62	10	54	63
26	51	63	11	53	68
27	54	63	12	50	64
28	56	62	13	55	63
29	54	70	14	52	63
30	57	68	15	48	66
31	51	73	16	56	73

Information Bulletin of the Rancho Santa Fe Association Rancho Santa Fe, California

Board of Directors — Harry W. Booth Jr., president; William Weddell, vice president; David B. Dewey Jr., Edwin H. Frazer, Capt. B. F. Jenkins, Dr. Neil J. Randol, Stanford Tompkins; W. A. Smart, Secretary-Manager; Thomas B. Robertson, Editor.

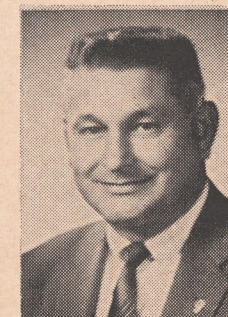
the Fireside Restaurant and Cocktail Lounge

A noted landmark for fine American fare, served in an atmosphere of quiet charm! Luncheon, cocktails and dinner... complete banquet facilities. Member of The Diners Club. Al Lowrey at the Wurlitzer. Highway 395 at W. Washington ESCONDIDO

Leucadia VILLAGE FORGE

- Curtain-type fireplace screens made to order: Any size, any shape In 13 decorator finishes
- Name signs to order

1646 N. Hiway 101 PL 3-1641



Russ Fowler Cadillac Sales



SALES and SERVICE

Your Factory-Direct Dealer in Escondido

PALOMAR MOTORS

120 North Broadway

Sherwood 5-4820

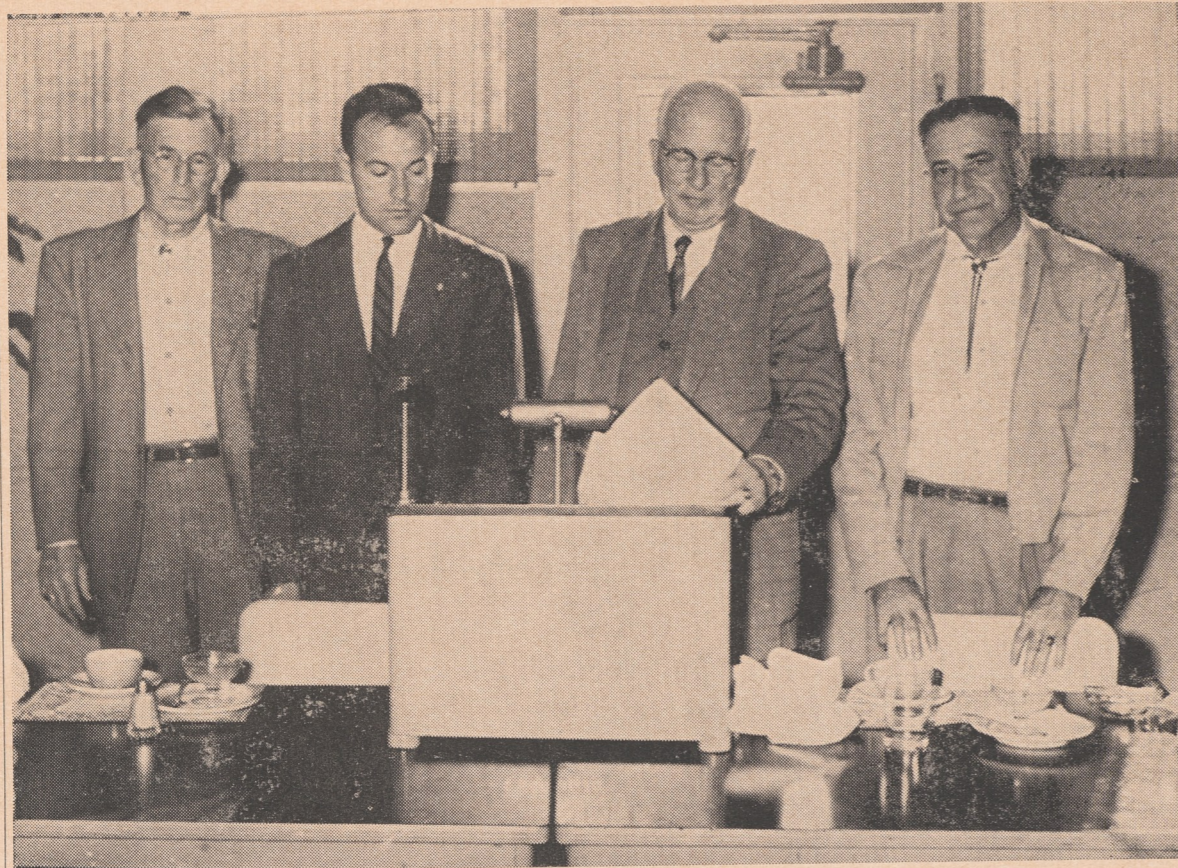
Complete Service Facilities

Bowling Green Attracts Faithful Group to Inn

Bowling on the green is an ancient and honorable pastime, with a long history of distinguished practitioners. Not to be outdone, Rancho Santa Fe can boast a faithful bowling fraternity which gathers on the green in front of The Inn each Tuesday afternoon.

Among the regulars are D. M. Bakewell, F. E. Bechstein, J. P. Cabell, John Cook, Gilbert Currie, W. O. Fleetwood, Fred Ford, W. H. Ford, A. D. Hill, Paul Lloyd, Ralph Mangan, H. Ray Millard, A. E. C. Oxley, Keith Powlison, H. G. Wall, H. J. Young and William Weddell.

COVER PICTURE — John M. Cook bowls while an informal group watches consisting of F. E. Bechstein, H. J. Young, W. H. Ford, H. R. Millard, H. G. Wall, G. S. Currie, and B. F. Fletcher.



NEW ROTARY CLUB—At the head table with Claude A. Welles, right center, are from left, Harry Walker of Vista, Roger Woolley of Rancho Santa Fe and Bob Hillingsworth of Escondido. Mr. Welles served as temporary chairman of this initial meeting held January 16 at The Inn.

NOW . . .

TO LIVE SAFELY AND COMFORTABLY FOREVER AFTER . . .

University brings you **SAFETY SERVICE** for your heating and air conditioning system.

CALL TODAY FOR DETAILS



Air Conditioning & Plumbing

546 Redwood, SHERWOOD 5-6913
ESCONDIDO

ART JURY MEETS JAN. 9

Application Is Approved For New Village Church

Application of the Village Community Presbyterian Church to construct a new building was approved by the Art Jury at its January 9 meeting.

The following approvals were also voted:

John W. Rice, Jr. to construct residence, garage and pool on Via de Fortuna.

James R. Ridgeway to construct residence, garage and pool on La Orilla.

Fred F. Antelline to construct residence on Las Planideras.

David R. Dewey Jr. for pool and fence on La Gracia.

Clifford Ewing to construct addition to residence.

K. A. Miller to construct residence on Las Planideras.

Howard Otten to construct addition to residence, grill room and carport.

Dr. Edward Creutz to construct garden pool and fence on La Valle Plateada.

The Inn for a change to tile on the roof of the Garden Room.

Standard Stations for a new service station in the down-town section.

Consideration was given to the following applications:

T. A. L. Loretz to revert three parcels into one parcel on Via de Fortuna.

R. Q. Fellows to subdivide his property on San Elijo into fourteen parcels.

Application of Haskell Strawn for lot realignment of his property on Lago Lindo.

Color samples for exterior of residences were approved for the following: Abner L. Sommers, for his residence (subject to toning down and softening the yellow); Maurice McColley; G. W. Alexander (subject to grey being softened by using some yellow); Miss Erna P. Clark.

President Welles presented Building Commissioner Lewis' report for the month of December.

For Your Every Need

- Books
- Office Supplies
- Hallmark Cards
- Gift Items

SH 5-5841

STATIONERS SUPPLY 129-31 E. Grand Escondido

Right on Your Way to San Diego . . .

- Easy Pick-up
- Low Cash & Carry Pices

DEL MAR CLEANERS

The Post Office is next to us

PAUL T. GALLEHER

REALTOR

Country Squire Courtyard

Rancho Santa Fe

HARLEY E. ANDRE — ASSOCIATE

PL 6-1180

Beautification Of Power Poles Discussed

A plea for Garden Club leadership in eliminating the blight of power poles upon the Rancho Santa Fe landscape was made by Charles A. Chapin of the Garden Club beautification committee, in a report made to that body at its October beautification program.

While lauding the use of underground conduits, Mr. Chapin admitted their exorbitant costs make them inadvisable in many instances. He recommended a program of tree planting, arranged so that the horizon line would be interrupted by the tree mass rather than the angular silhouette of the poles.

The power and telephone companies, he said, are anxious to cooperate with property owners in any way possible, and would not interfere with trees except to the point of trimming them if lines were endangered.

Mr. Chapin recommended a campaign by the Garden Club to encourage owners in this sort of camouflage, and suggested that where poles are in Association turn-arounds or other park property, the work should be undertaken as a community project.

The suggestion was also made that the Art Jury review possible routing of utility easements in proposed subdivisions, so that a minimum of damage might be done to the landscape.

The Garden Club intends to implement this report during



CAMOUFLAGE PROBLEM — This photograph of a telephone pole on the Ranch illustrates what can be done with a little planting. It should be placed far enough away from the pole to permit maintenance of the lines, but close enough to obscure the harsh vertical pattern of the structure.

February, according to Mrs. William Weddell, beautification chairman.

A letter will be mailed to all members on February 13 listing plant materials and techniques for use in camouflaging power poles and other utility features.

Information was assembled from material supplied by the San Diego Gas and Electric Company, which is giving excellent cooperation through liaison given by Mr. Chapin.

Mrs. Gifford C. Ewing has assembled an authoritative list of plants which thrive in this area

and which are suitable for this purpose. It will be included in the letter to Garden Club members.

It is hoped that the club's entire membership will join in supporting this program, Mrs. Weddell said.

If just one or two poles are planted out in each neighborhood, an immediate boost will be given to the over-all effect and to the appearance of the community in a way that could never be achieved through individual effort alone.

Meadowlark Club, Nor-San Players Announce Changes

The Meadowlark Ranch Club announces the recent appointment of "Deb" De Lores as riding stables manager, according to Herb Engert, club manager.

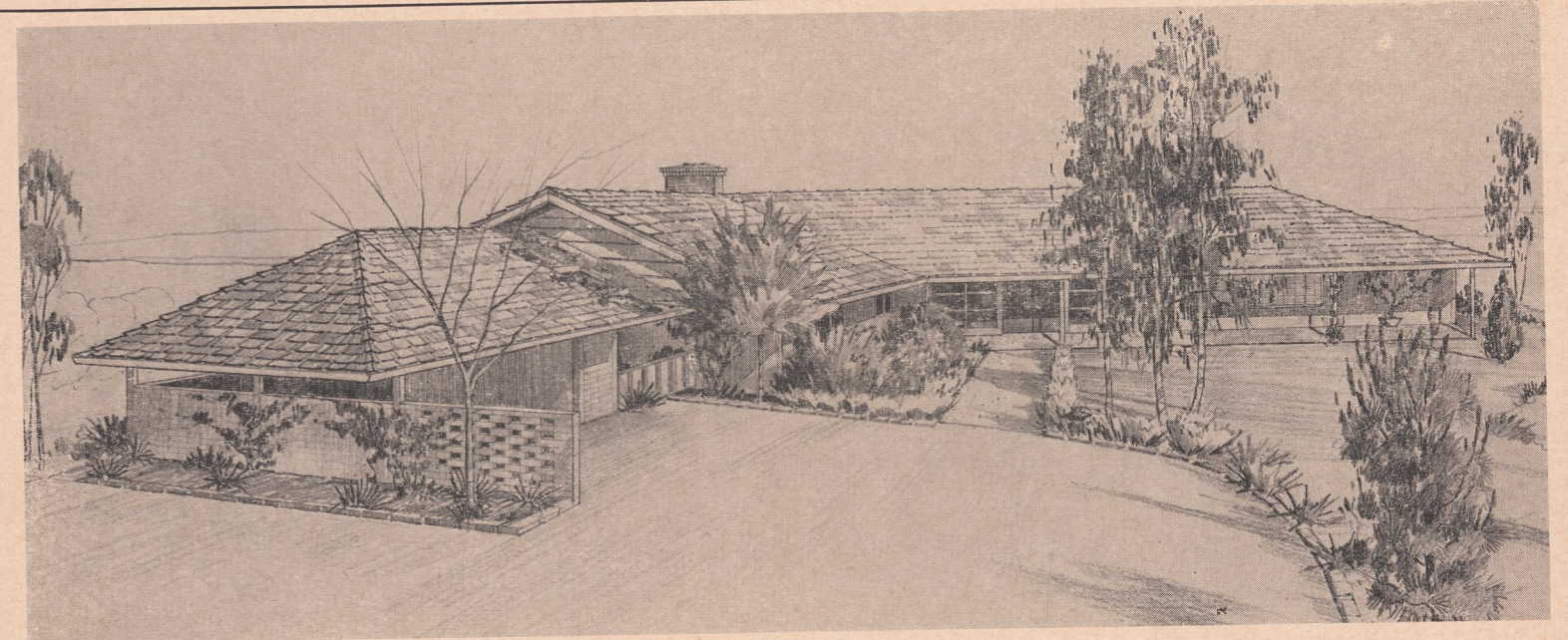
Victor Heyden, head of the speech and drama department of Palomar College, has taken over direction of the Nor-San Players actors' workshop.

Meetings are held each Tuesday night in the Nor-San Playhouse at the Meadowlark Ranch club from 7 till 10 p.m.

The purpose of the workshop is to present lecture and practical instruction in the technical and dramatic aspects of theatre to interested personnel. It is not necessary to be a member of the Nor-San Players to attend this instruction.

Nor-San Players are now in their second year of "He Done Her Wrong or Wedded But No Wife" and have completed twelve performances of their new show so far on Saturday evenings.

The Meadowlark Ranch club is a twenty-minute drive from Rancho Santa Fe on the road to San Marcos.



A Country Home by . . .

HOWARD G. STEINWINTER & JOHN BANCROFT

PLaza 6-1171

General Contractors

Box 6, RANCHO SANTA FE



GARDEN CLUB ADDITION—This is the appearance of the Garden Club's new addition from the street after completion. The extra room is being furnished as a restful lounge, and will accommodate smaller meetings.

Land Transfers

The following real estate transfers have been recorded since the last issue of the Bulletin went to press.

Purchasers whose names appear in bold-face type are new covenant members of the Association.

William F. Jr. and Barbara E. Amon to **Ralph R. and Arda E. Mellon**, portion of lot 4, block 29.

Roy L. and Kathryn Thompson to **Clifton D. Robertson**, portion of lot 3, block 43.

La Jolla Investment Co. to **Willis M. and Ruth Allen**, portion of lots 2 and 3, block 36. Resold to **Allen-Ewing Foundation**.

Title Insurance and Trust Co. to **Hugh E. and Alice H. Shaw**, portion of lot 7, block 47.

J. Ernest and Mildred M. Randall to **Charlton B. Rout**, portion of lot 3, block 30.

Lloyd V. Casto to **Roger S. and Patricia J. Woolley**, portion of lot 5, block 16.

Edmond M. and Elizabeth P. Sullivan to **Elroy O. and Ruth A. Jones**, lot 39 and portion of lot 40, map 2129.

Riding Club Holds Annual Dinner Meeting

Mrs. Paul Dobson was chairman of the annual dinner meeting of the Rancho Santa Fe Riding Club, held in The Meetin' House at The Inn January 23.

Officers were elected for the coming year, but the news was not yet available as this issue of the Bulletin went to press.

Country Friends Set Discount Sale Feb. 1 thru 15

The Country Friends' first 1959 semi-annual 25 per cent discount sale will start February 1 at the Trader Shop, it was announced today by Mrs. Dorothy B. Patton, president.

The sale will continue until February 15, with shop hours set from 11 a.m. to 4 p.m., and all merchandise will be subject to the reduced prices.

25% DISCOUNT SALE
Feb. 1-15 11-4 Daily
COUNTRY FRIENDS
Trader Shop
In the Village Center

Residences
Building Sites
Investment Properties

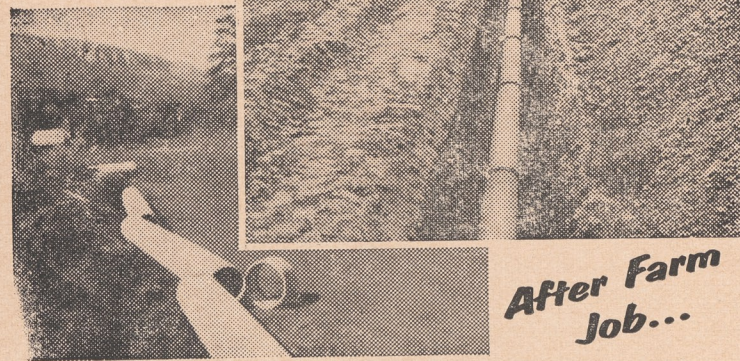
In Rancho Santa Fe
And Adjoining Areas

NELSON and CHAPIN

Montgomery L. Hart, Associate

PASEO DELICIAS

On Farm Job...



After Farm Job...

Transite Irrigation Pipe protects against shutdowns

FARMERS EVERYWHERE have found using Transite Irrigation Pipe to be the sure way to avoid irrigation shutdowns, prevent water loss and cut pumping costs. Whether used for sprinkler or surface systems, Transite provides long, trouble-free service.

Made of asbestos and cement, Transite is strong and durable. When used underground in sprinkler systems, its resistance to corrosion both inside and out assures long service life, constant rated pressures.

Internal deposits due to tuberculation will not build up, thus fuel and power wastage caused by overworked pumps is avoided.

Transite will save vital water, reduce operating costs in surface systems for tail water pump-back, too. Specially designed couplings assure positive joint seal yet give line flexibility. These joints stay tight, are not affected by wetting or drying out between applications.



Johns-Manville TRANSITE IRRIGATION PIPE
AN ASBESTOS-CEMENT PRODUCT

WEBB BROS.

DISTRIBUTORS

252 W. Grand Ave.

Escondido, California

Rummage Sought Right up to Sale Day, Feb. 10, 11

February 10 and 11 are the dates of this year's traditional rummage sale at the Garden Club.

Contributions of rummage will be welcomed right up to the last minute, according to Mrs. Harry W. Booth Jr., chairman of the event.

Useful or decorative objects of every description are wanted. All kinds of furniture, appliances, linens, books, patio equipment, clothing for adults or children, shoes, hats, jewelry, objets d'art, bric-a-brac are welcome.

The "French room" will be quartered this year in the club's new addition. Here women's fashions and the better clothes will be sold.

Garden Checklist

1. Prune roses if you haven't already. When in doubt, check with your nurseryman to learn the right way to go about it.
2. Shop nurseries for camellias in bloom this month. You can stretch the camellia season by planting early, mid-season and late-blooming varieties.
3. A small-garden alternative to planting several varieties of peach to get early and late peaches is to plant three different varieties in a single hole. Ask your nurseryman about such a method.
4. Want a tree that lends just the right accent to the garden? Try an olive — it's typical California too! Its gray foliage will be appreciated where weather limits its ability to bear fruit.
5. Plant grapes now while they are dormant. Also raspberries and blackberries. Be sure and get the varieties best suited to your own area.



YOU NAME IT . . . — Mrs. Harry W. Booth Jr. center, chairman of the Garden Club's rummage sale scheduled for February 10 and 11, looks over rummage collected so far with Mrs. James R. Irwin, left, and Mrs. Robert E. Patnaude.



. . . AND WE WANT IT—Admiring some of the clothing contributed for the rummage sale are, from left, Mrs. Charles A. Chapin, Mrs. Hans H. Ammann, Mrs. Lester Walls, and Mrs. Albert H. Dutton. All are assisting with its collection.

Most Convenient
... TO THE RANCH

Del Mar

Liquor Store

1446 Hiway 101 SK 5-1733

Chrysler - Imperial - Dodge - Plymouth

S I M C A

Complete Service Facilities

Your Direct Factory Dealer in ESCONDIDO

"Where Customers Send Their Friends"

Hidden Valley Chrysler & Dodge

A New Location to Better Serve You

221 N. Broadway
SHERWOOD 5-5311



VALENTINE'S DAY SWEETHEARTS — This group of 6th grade "majorettes" at the Ranch school practices during non-school hours to perform at the school's field day in June. Jennifer Abels is the baton leader. Others, from left are Hillary

Hoskins, Penny Boteler, Alice Waldo, Muriel Titcomb, Betsy Allen, Marcia Oppermann, Margaret Agerance and Lily Tunstall.

School Playground Given Seal Coat By County Crew

The seal coat for blacktop on the upper playground at Rancho Santa Fe school is now complete, and the facility is available for community use, according to Lambert Baker, school principal.

Sealing was applied by Al Hoover's crew from the Rancho Santa Fe depot of the San Diego County road maintenance department and laid during the school's Christmas vacation.

Members of the school staff later marked off play courts with white traffic paint.

The playground is a community facility, available to Rancho Santa Fe youngsters for recreation and games at any time outside school hours, except on Mondays and Thursdays between 3 and 4:15 p.m. Then it is used for organized recreational facilities under direction of Roger Rowe, school instructor.



DO THEY LISTEN TO ELVIS PRESLEY IN ENGLAND? — This was one of the questions answered by Lady Coleraine when she spoke before an assembly of 5th and 6th-grade students at the Ranch school on January 20. Her husband is the son of Andrew Bonar Law, prime minister of England in 1923, just prior to the premiership of Stanley Baldwin. She was visiting here with the family of Rev. Lawrence Newhouse.

Ranch Students Make Honor Roll At Warren JHS

Rancho Santa Fe teachers had reason to glow with pride last month when they learned that over half of all the seventh-grade honor roll students at Earl Warren Junior High school in Solana Beach were graduates of last year's Rancho Santa Fe sixth grade class.

Since Rancho Santa Fe contributed only 22 out of almost 200 students in the seventh grade, it represents a formidable average and does real credit both to our students and the teachers who trained them.



Mrs. Nancy C. Mohan, new secretary at the Ranch school.

New Secretary At RSF School Likes Golf

Rancho Santa Fe School welcomes a new secretary, Mrs. Nancy C. Mohan, wife of E. H. Mohan, now an English instructor at the Army-Navy Military Academy in Carlsbad.

Mrs. Mohan was born and raised in Roanoke, Virginia, and attended Ohio State University. She lives in Carlsbad, and is active in elementary school groups, PTA and the Red Cross. The Mohans have a 12-year-old daughter, and a son who is a pre-medical student at the University of Utah.

Although golf is her hobby, Mrs. Mohan has not yet had an opportunity to play on the Rancho Santa Fe golf course. She admits, however, that the fame of our golf course was an excellent reason for wanting to come here.



The decor is an early Californian wine cellar with a view of a flowered patio and garden.

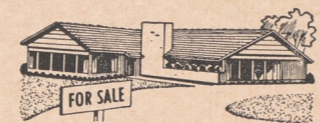
Dinner specialties—thick steaks, chops, prime ribs and luscious salads—served to 10 p.m.



Reservations Suggested Plaza 6-1131

WESLEY HADDEN, Vice President

JOHN COLE'S
Book & Craft Shop
7871 Ivanhoe Ave.
LA JOLLA, CALIFORNIA
GLencourt 4-4766



Charles A. Lewis
AQUI REAL ESTATE
Homes Lots Acreage
756 Hiway 101 Off. PL 3-2525
LEUCADIA Home PL 3-3214

John F. Gill
Jeweler and Watchmaker
1200 Prospect at Ivanhoe
(Half-block North of
La Valencia Hotel)
La Jolla GL 4-3285
Our 9th Year in La Jolla

TUTWILER STUDIO
Photography for the Discriminating
Portraiture Our Specialty 154 E. Grand
SH 5-4341 Escondido

CHURCHILL & CASSOU HARDWARE
• Dutch Boy Paints • Frigidaire Appliances
140 E. Grand ESCONDIDO SH 5-2441
Where Quality Tells and Service Sells

A NEW AND BETTER WAY OF PACKING YOUR GOODS!

MAYFLOWER "PRIDE PACK"

- GREATER PROTECTION!
- CLEANER — FASTER SERVICE!
- MORE ECONOMICAL — SAFER!

COLE MAYFLOWER
Cole La Jolla Truck & Storage Co.
7851 Herschel GL 4-0444
FOR INFORMATION OR SERVICE PLEASE CALL COLLECT

Awards Made At Honor Court To Ranch Scouts

A court of honor highlighted the January 9 meeting of Rancho Santa Fe Boy Scout Troop 717 which was held in the new building at the Rancho Santa Fe fire hall. Presiding was the new chairman, Raymond Gordon, who introduced guest speaker Dean Hurst, counselor of San Luis Rey district, Boy Scouts of America.

Awards were made as follows:

John Fox, John Siebert and Charles Gibbs, star badges; John Brooke and Pete Dutton, first class badges; Rad Dutton, merit badge, safety, public health, reading and citizenship.

John Fox, painting, cooking, and swimming; Jim Sieber, home repair, cooking, sewing, fishing and cycling; Charles Gibbs, home repair; Freddie Gibbs, cooking and cycling.

Pete Dutton, art, dog care, cooking, swimming, scholarship, firemanship, horsemanship, fishing and reading; Gunter Amtmann, cycling; David Dewey, cooking, firemanship, and reading.

John Powers, swimming; Flip Schofield, swimming; Tony Meyers, firemanship and cycling; John Brooke, cooking, swimming and firemanship.

Tell her you love her with a Franaud Valentine corsage or vase arrangement



FRANAUD FLOWERS

628 First St. PL 3-2554 ENCINITAS

Slippers for the Family

- Ask about "Club 13" • Shoe Valets • Gift Certificates • Belts Socks

MARSHALL SHOE & REPAIR
112 W. Plaza SOLANA BEACH SK 5-1776 School Shoes



BOY SCOUTS MEET WITH HUMANE SOCIETY MEMBERS — This is the group which gathered in the new assembly hall at the fire station to see a film sponsored by Rancho Santa Fe citizens interested in the Humane Society.

Humane Society Members Meet With Boy Scouts

The Rancho Santa Fe humane society sponsored a meeting on the evening of January 16, attended by a group of Boy Scouts and other interested people, at the volunteer firemen's hall.

A discussion on humane society activities was held and plans for future meetings, aimed at community audiences, were outlined.

Humane society officers announced that two stray collies are in need of homes. Persons wishing to adopt a dog, or to report a stray, should phone Mrs. Howard W. Freck at PL 6-1943.

Meadowlark RANCH CLUB

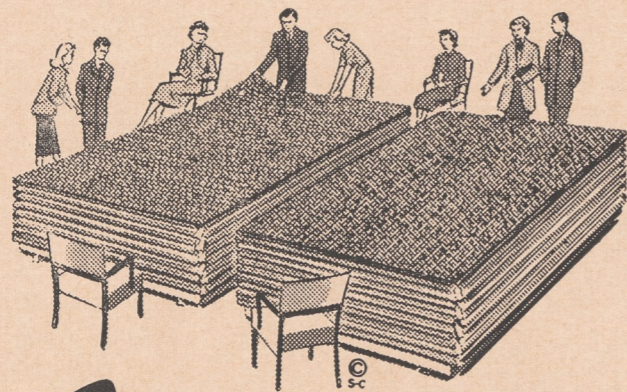
Announces the Arrival of "DEB" DE LORES

To Manage the Meadowlark Stables

Why not combine riding here with our famous duet: Sunday "brunch" 11-2, champagne buffet starting at 6 p.m.

PHONE SK 5-6603 For Reservations

On Rancho Santa Fe Rd., 4 Miles South of Highway 78



- TOP QUALITY
- BOTTOM PRICE
- BEST SERVICE



Magic Carpet Co.

115 North Highway 101 Solana Beach SK 5-2116

Closest Carpet Specialty Shop to Rancho Santa Fe

Save ON FLOOR COVERINGS

Come in and see our stock of Custom Drapes Too

SFID Starts Annexations; Scans Land Appraisals

Appraisals upon which the Santa Fe Irrigation district's largest land auction sale will be based have been completed by two firms, working independently, and the district directors made a tour of the area. Minimum prices will be based upon the appraisals.

Already there are numerous prospective buyers for some of these lands, lying between Rancho Santa Fe and Solana Beach. San Dieguito High school district has been given priority for a 40-acre site provided it agrees to the price the board will set — and there's a group interested in a 100-acre campus for a college or university.

Two real estate brokers, present at the SFID meeting on January 12, said they were in touch with a Baptist organization seeking such a site, east of the freeway line for a private college. They are expected to negotiate further after minimum prices are established.

Annexation of 24 acres of dry land to the Santa Fe Irrigation district was approved by the district board at their January 12 meeting subject to unanimous concurrence by all parties concerned.

The annexation procedure will involve two acres owned by Mrs. Constance Wunderlee, 12 acres on which Richard Blackledge and Herbert O'Rand hold options and five acres owned by James R. Fox and five owned by the 22nd District Agricultural association, and also 1/2 acre owned by Mr. Walter Burn of Los Angeles.

All are near the intersection of Border road and Stevens avenue except the Fox property which is at the northwest corner of the district.

Blackledge and O'Rand were reported to represent interests planning a shopping center.

Clayton Jack, president of the Bill Jack Scientific Instrument company, also was present to discuss buying three or four more acres to round out the company's future plant site south of the Warren Junior High school campus.

The board authorized participation with respect to one 17-acre tract east of Stevens St. in a petition for expansion of the Solana Beach Sanitation district. Eden Gardens is involved in the petition and it has been circulated in Keeney's Marine View Gardens.

Conferring with a spokesman



CAMPFIRE GIRLS — Mr. John E. Howe buys two cans of peanuts from Carol Bacon, Mickey Rollins, Kathy Campbell, Linda Higham and Patty Bacon.

for the Santa Fe railway, the directors approved terms under which the approximately 2.7 miles of railroad right of way will be annexed to the district. The terms are identical with those established in a similar annexation to the San Dieguito Irrigation district, with one exception.

The agreement will provide — subject to railway officials' expected approval — that an additional fee of \$1000 per acre will be charged if at some future time water is used on any of the land for other than railroad purposes.



The Fancy Pantry

7852 Girard Ave. LA JOLLA GLencourt 4-2121

- Two of La Jolla's finest shops to serve you.
- Featuring imported & domestic groceries, wines, liquors & liqueurs.
- Featuring unique gifts and gift baskets for every occasion.
- Free deliveries each Tuesday & Friday to Rancho Santa Fe.
- Inquire about our ice cube service.

The Town & Country

7541 Girard Ave. LA JOLLA GLencourt 4-6227



... YOUR NEAREST FORD DEALER for Sales and Service

"SATISFACTION GUARANTEED"

PETERSON FORD

IN ENCINITAS

100 North Highway 101 • PLateau 3-1161

OLA JOHNSON ... LANDSCAPE SERVICE and GARDEN SHOP

Your headquarters for landscaping supplies and service
DRAINAGE PROBLEMS **SPRINKLER SYSTEMS**

... Let Us Solve Yours ... simple, practical layouts

BEDDING PLANTS, BULBS, TREES & SHRUBS

REMEMBER YOUR DORMANT SPRAY AND PRUNING

FERTILIZING
... complete stock of fertilizers, nsecticides and plant materials

Licensed Contractor
... for your protection

Masonry Work
... stone, brick, etc.

Creative and practical designing

Rancho Santa Fe • In the Village Center on La Granada • PL 6-1427



MARCH OF DIMES — Nancy Busche and Joan MacFall, left and right center, get contributions from Michael Mahon, left, and Michael Stapley. The drive was sponsored by the Girl's League of San Dieguito Union High School.

Ranch Golf Teams Get Off To Start of 1959 Season

Team play began on January 25 between Rancho Santa Fe's "home" and "travelling" teams and their respective opponents in the San Diego and Southern California areas respectively.

On January 25, the home team played at the Ranch, meeting the San Diego Country Club's aggregation. The travelling team played the Annandale Country Club. Results were not available at press time.

During the balance of the month, the home team meets the Mission Valley club at the Ranch on February 8, plays San Diego in Chula Vista on the 15th, the La Jolla Country club team at the Ranch on February 22 and a return engagement in La Jolla on March 1.

The travelling team meets Santa Ana again on February 8 playing on their home course

this time, and the Annandale team on February 15 at the Ranch. On February 22, they play at Red Hill, and on March 1 meet the Red Hill aggregation at the Ranch.

Each team consists of 20 players plus alternates.

The home team roster is: Napier, Brady, Christopherson, Barry, Peterson, Hoskins, Tunstall, Freck, Shaw, Harrison, Moon, Unger, Bock, Novak, Anderson, Mahon, Hart, Regan, Bowman, Williamson, Crichton, Johnson, McKinney.

On the travelling team are Pratt (captain), McAfee (co-captain), Patten, Wolfard, Odien, Beals, Pearson, Leadon, Tillotson, Ofsthun, Wallace, Wood, Trucks, Binns, Heiland, Ridley, Brooke, Voorhies, Huetner, Campbell, M. Smith, Gibbs, Bowman and Rule.

Rancho Santa Fe
Country Homes and Homesites
R. M. CLOTFELTER

Licensed Real Estate Broker

Since 1931

PLaza 6-1422

Paseo Delicias

BULK RATE
U. S. POSTAGE
PAID
Rancho Santa Fe,
California
Permit No. 15

THE TRADIN' POST

Gifte Shoppe

Merle Norman Cosmetics
Original
Items, Wide
Assortment



Theatre Arcade
SK 5-1695
Solana Beach

El Petite Beauty Salon
Helen Pooler, owner
SKyline 5-1088
WILSON THEATRE ARCADE
ON THE PLAZA
SOLANA BEACH

Rancho Hardware
in the Village Center
Featuring Winter
Gardening Tools Now
Also Barbecue Supplies
We Give S&H Green Stamps
PL 6-1702

TIEDY'S

TELEVISION & APPLIANCES

RCA COLOR TV
PHILCO — PACKARD BELL
MAYTAG

509 First St. PL 3-1877
ENCINITAS

DOUGLAS HANNA

The Linen Shop
WAMSUTTA SHEETS
and TOWELS

1141 Prospect St. • La Jolla

CULLIGAN Soft Water SERVICE

for BETTER LIVING
111 So. Cedros P. O. Box 278
SOLANA BEACH
Phone SK 5-1022

Gailey's Photo Supply

"Escondido's Most Complete"

230 E. Grand
Phone SH 5-7823 - Escondido

For any make NEW or good used car, call BILL APPLE,

A & A MOTORS

QUALITY CARS
PL 3-1702
204 N. Hwy 101 Encinitas

Cadase las Flores

Anne Sterrett
1444 Highway 101
DEL MAR
SK 5-1091
Floral Designing with a Flair

MacPherson's

Men's and Women's

Quality Clothing

515 First Street

PL 3-1953

Encinitas

ENCINITAS APPLIANCE

G E and Frigidaire
620 2nd St. PL 3-1626

ENCINITAS LUMBER CO.

Everything and anything
for building
745 First St. Encinitas
PL 3-1148

GOODIES GALORE COFFEE SHOP

The only Coffee Shop in Town
588 Hiway 101 Encinitas

25% DISCOUNT SALE

FEBRUARY 1-15
11-4 DAILY

Country Friends

Trader Shop

In the Village Center

1997,002,046 P513