

ASSOCIATION BULLETIN

PUBLISHED BY THE RANCHO SANTA FE ASSOCIATION FOR THE BENEFIT OF ITS MEMBERS

Volume IV, Number 4

Rancho Santa Fe, California

April, 1957



It was 20 years ago this month that plans for the Garden Club building were drawn up by Lillian Rice, the Ranch's first Art Jury president. Since that time, many other public-spirited Ranch women have made use of the building, central point for operations of the com-

munity-minded Garden club. Remodeling recently, under the direction of San Diego architect Lloyd Ruocco, improved still further the appearance of the clubhouse and its attractive patio. Article on this leading Rancho Santa Fe Women's club appears on page two.

Garden Club Aims at Welfare, Social, Cultural Programs As Well As Beautification

The Rancho Santa Fe Garden club, as you might expect, is interested in flower arrangements. But the club, a founder member of the California Garden Club Federation, has also interested itself during its 28 years-history in non-horticultural projects ranging from support of British War relief in World War II and of many philanthropies, among them the Country Friends, to sponsorship of a local Cub Scout pack, prior to the organization of the current sponsor, the Village church.

Yet these other projects — if you read the by-laws — are not so far afield after all; for among the club aims stated there are not only "advancement of gardening and landscaping" for home and civic beautification, but also sponsorship of "county social welfare activities and other social and cultural programs."

Accordingly, the Garden club did extensive volunteer war relief work in World War II, receiving citations from UNRRA and the Red Cross for meritorious service. Proceeds from one of the club's famous garden tours, in 1940, helped finance a small ambulance unit to operate between isolated stations at the French front. An active Red Cross "casualty station" was established at the clubhouse in 1942 and made substantial contributions to the war effort.

The wartime garden club also sponsored a weekly dance for enlisted men. In 1943 the club suggested a community project to be called a "Thanksgiving fiesta," featuring horseback riding, a market place, a band, dancing and refreshments, for the benefit of servicemen stationed in or near Rancho Santa Fe. The fiesta was held, and servicemen came from far and wide, enjoying themselves in a colorful village celebration at which jeeps and pickup trucks mingled with tallyhos.

The continuing Garden club lecture program reflected at this time an awareness of the overseas conflict, too, with such special talks as one by an Army

captain in 1943 on "Psychiatry in the War Effort."

More recently, the club's concern with humanitarian needs led to cooperation with the Hungarian Relief garden tour, for which use of the clubhouse was donated to the Red Cross.

Because the Ranch lacks community meeting places, the garden clubhouse is often rented out to other groups, as for dancing classes, Riding club suppers and special lectures. The extent of Garden club participation in its community is even better demonstrated, however, by the number of uses for which the clubhouse is offered without charge or for a nominal fee. Examples include the World War II use as casualty center and American Red Cross meeting place (which it still is) and, currently, as village polling place and home for Sunday morning services of the Village church.

The club itself uses the clubhouse extensively, of course, for meetings, dances, lectures — and garden shows. Its interest in gardening is still basic, and the club takes understandable pride in its achievement of statewide fame for advanced work in exhibiting and arranging flowers. First flower exhibit took place in 1927, before the club actually functioned as a formal entity. Early spirits behind its growing reputation were Dr. A. R. Sprague, horticultural adviser to the Santa Fe Land Improvement company, and Mrs. Norman Carmichael, guiding spirit and president in the club's early days. Mrs. Carmichael was honored in 1945 with the life title of Honorary President.

First prize in the National Rose show at the 1936 International Exposition at Balboa Park was only one of the many "firsts" that have been garnered by the club. Its desire for excellence is reflected, among other ways, in the attendance last year of five members at a "judging school" in San Diego, climaxed by their testing and accreditation as flower show judges.

Recognizing the diversity of in-

terests among its 500-odd members, the Garden club this year, under the leadership of President Mrs. Raymond Griset, tried something new in organization. Sections were set up within the framework of the club to accommodate these varied membership interests. Besides the Garden section, there is now an Art section and a Bridge section, and more may be in the offing as other specialized needs are expressed within the club.

Members of the Garden club may join any one of these sections — or more than one if they choose. Those who join the Garden section automatically become members of the California Garden Clubs, Inc.

A unique collaboration between sections with special interests culminates April 27 and 28 in a combined Arts and Crafts and Flower show. Under the direction of the two sections and their chairmen (Mrs. Lewis Lintner, Art; Mrs. Wendell Wheelock, Garden), members from the entire club will exhibit not only flowers but sculpture, ceramics, painting and handiwork. The club is excited at the challenge involved in presenting a show of this type, in which flower exhibits and art works are so arranged as to complement each other. No admission will be charged, and no prizes will be given.

This original, judgeless show is a good example of how the Garden club, branching out with the years, continues to grow, always building upon its foundation of interest in flowers and landscaping.

Monthly meeting of the Art Jury in May will be held Thursday, May 2, instead of May 6.

Road Changes Protested at Meet of SFID

The board of directors of the Santa Fe Irrigation district voted at their regular meeting April 8 to oppose the county's proposal to widen a road that now extends from Linea del Cielo, near the Inn, past the fire station and the elementary school, to La Granada opposite the golf course.

Although it was acknowledged that the widened road, with its two sharp curves smoothed out, would provide more maneuverability for fire trucks, directors were conscious of the increased danger to children in the vicinity of the school that would result from heavier and faster traffic.

R. M. Clotfelter, manager of the Inn, pointed out to the directors at their monthly meeting that the road had originally been deeded to the county as a "secondary" road. In widening and realigning the road, Clotfelter said, the county would not only detract from the value of the Inn and endanger nearby school children, but also destroy some of the area's natural beauty by taking down a row of eucalyptus trees.

The county, which has instituted condemnation proceedings to obtain the right of way to a parcel withheld by George Richardson, owner of the Inn, alleges that the widened road will facilitate exit for the fire trucks and give better access to the elementary school, accommodating school buses for the first time when it is widened and realigned.

When a man and woman marry, they become one. Of course, they must decide which one, and that is often where the trouble starts.

BOARD MEETING MARCH 15

Aquatic Pool Plan Broached; Legal Aspects Await Study

Special requests presented by the president of Country Friends and by a delegation of people interested in construction of a Ranch swimming pool were heard by the Association board at its March 15 meeting.

The swimming pool delegation headed by Mrs. Shirley Keith, presented an urgent request for immediate consideration of a plan for construction of a swimming pool to be financed and operated by the Association which would, if possible, be available for use June 1. Others in delegation were Mary Stone, David Burger, Mrs. Alfred Vang, William Pfennig, John Goodrich, Merle Dutton, Marjorie Roberts, Barbara Amos, Paul Roberts, Elaine Ravenscroft and Elizabeth Goodrich.

The matter was discussed at some length and no action was taken pending the necessary discussion with counsel and others. The board was asked to designate a tentative site for such a pool provided there are no legal difficulties. It was hoped that this request could be disposed of at the next board meeting, April 5.

Mrs. Harry Wenz, president of Country Friends, asked the board for favorable consideration of the Friends' request for permission to sell beer, wine and liquor at the two-day polo matches which are planned to be held under their auspices June 1 and 2. No action was taken by the board pending discussion of possible legal obstacles with Howard Clayton, counsel for the board.

Consideration was given to the request of Walter Blackburn and preliminary sketches presented, for keeping of animals on a portion of Lot 2, Block 9.

Approval was given by the board to the matter of the Association mailing a special letter to purchasers of land at Rancho Santa Fe suggesting that preliminary plans of buildings be submitted to the Art Jury prior to final plans.

President C. K. Whittaker reported to the board on signs along bridge trails — the matter is being taken under consideration by attorney Howard Clayton — and Secretary William Smart was directed to write a letter to the county road department with reference to signs posted on roads throughout the Ranch, report to be presented at the next Board meeting. Mr. Smart was directed also to inform the city of San Diego, airport location committee, of the board's strong protests of the proposal to locate a major airport in the area near Del Mar.

Mr. Smart was directed to write a letter to Claude Conklin thanking him for presentation of 10 Palomar cedar trees to the golf course, and to "roll over" \$10,000 U. S. Treasury note at permit of A. H. Anderson to the end of March.

The board approved the request of John Rule for realignment of lot line on a portion of Lot 2, and all of Lot 7, Block 47. Consideration was given to preliminary request of Minton Cronkhite for lot realignment of a portion of Lot 1, Block 19;

Special Services Observe Easter Season at Ranch

Attendance has been extremely good at the Village Community church's regular Sunday morning services at the Garden club, Rev. Chester Tolson said recently.

Two services were held this month on Easter Sunday morning, at 10 a. m. and 11:15, at Village Community Church, and a special communion service was held Maundy Thursday, April 18, at the Garden club building. Westminster Society and Boy Scout Troop 716 sponsored jointly an Easter Sunrise Service at the Paul E. Lloyd ranch.

At the two Easter Sunday morning services, the choir initiated its new robes.

no action was taken.

President Whittaker and Secretary Smart were authorized to sign covenant acceptances submitted, subject to the approval of the Art Jury to buildings thereon conforming with covenant specifications.

Reports were given by Glenn F. Lewis, building commissioner, on construction in Rancho Santa Fe in February; by President Whittaker, on the "quiz" campaign conducted by the Mangore corporation and on a new easement form being considered by Rancho Riding club; by Arthur Thorne on progress of "Save the Water" committee and by keep animals was deferred pending Raymond Griset and Ward A. Miller — progress report on planting of a hillside by Roy Thompson on a portion of Lot 3, Block 43.

Orange Theft Season Here

Rancho grove owners would do well to keep an eye out for strange trucks and suspicious characters during the next few weeks, warns the Association. Just recently, one owner spotted such a truck and surprised its "characters" in the act of making off with a huge haul of ripening oranges.

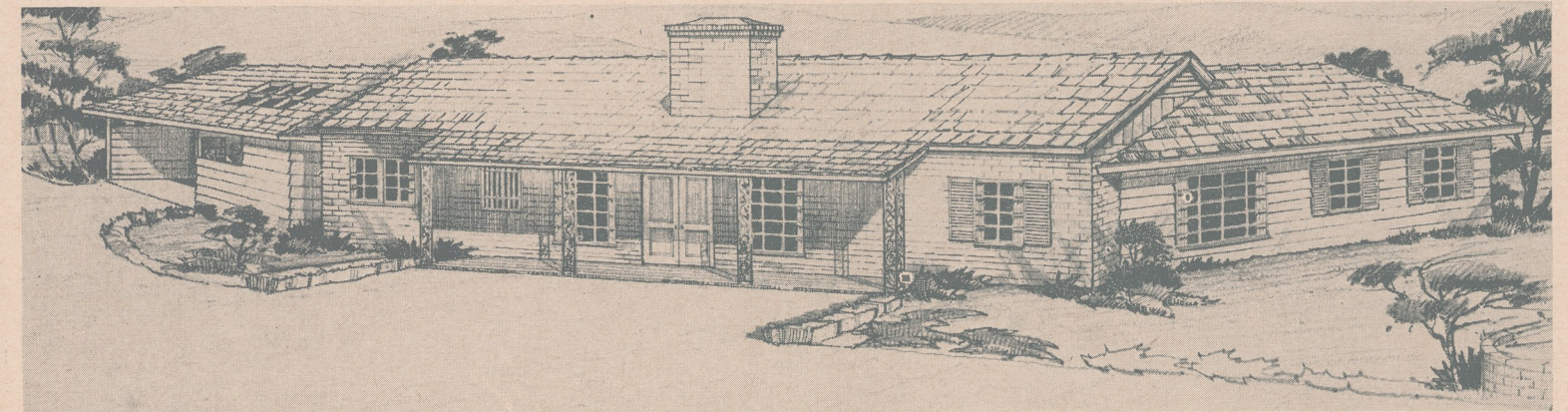
In past years, this period of maturing oranges, lemons and avocados has been known to encourage ambitious fruit thieves. Owners are advised to call the sheriff if they think somebody is about to "liberate" a part of their crop, and the sheriff's job will be made easier if some identification of the thieves — license number of their truck, for example — is noted prior to placing the call.

Masonic Service Conducted for Dr. Wilber Gier

Masonic services were conducted in San Diego this month for Dr. Wilber Joseph Gier, 71, of Las Planideras.

A graduate of Hahnemann Medical college in Chicago and Kansas State college, Dr. Gier had been practicing medicine in San Diego county since 1941.

He was a 32nd degree Mason and a member of Siolam Masonic Lodge 276 in Oklahoma City, Indian Temple, Oklahoma Consistory and Scottish Rite. Survivors include the widow, Faith; a son, Dr. John L. Gier of Rancho Santa Fe; a daughter, three brothers and two grandchildren.



A Country Home Under Construction by . . .

HOWARD G. STEINWINTER & JOHN BANCROFT

PLaza 6-1171

Box 6, RANCHO SANTA FE

General Contractors

Information Bulletin
of the
Rancho Santa Fe Association
Rancho Santa Fe, California
Ken Eisler, Editor

Rancho Santa Fe
Country Homes and Homesites

R. M. CLOTFELTER

Licensed Real Estate Broker

Since 1931

PLaza 6-1422

Paseo Delicias

Traders' Shop Helps Support Country Friends Philanthropy

Proceeds from the sale of a Sixteenth Century Spanish strong box at the Trader's Shop in Country Squires patio of the Village Center, may well finance the guidance of a Logan Heights boy who has gotten into trouble with the police, or a new sterilizer for a clinic serving a low-income area in San Diego.

The Traders' Shop, staffed entirely by volunteers, is the continuing source of income for Country Friends, an organization formed in 1954 at Rancho Santa Fe by a small group of women who wished to satisfy some of the unfilled needs for philanthropy in San Diego county.

Soon after the formation of the Friends, James M. Young, owner of what is now the Traders' Shop, found out about the new organization and offered the use of this space for a fund-raising antique shop. Since that time the shop has been going strong, offering items ranging from a "Jenny Lind bed" over 100 years old and a Persian brocade from the Sixteenth Century, to an automatic washer, vintage 1951. All money brought in by the items, which are either donated or sold on consignment, goes into the Friends' treasury, from which funds are allocated each year to selected charities.

The Friends themselves have been "going strong" since 1954 too; the original membership of some two dozen Rancho Santa Fe women has now swelled to a total of 525, with member chapters within the organization from Valley Center to San Diego. The original nucleus of Rancho Santa Fe women, still leaders in the organization, has grown to 214. Dues are only \$2 a year, and this contribution, from active and non-active members alike, helps the Friends as operating expenses mount with increased activity.

Besides the funds raised by the the Traders' Shop, money for Friends' charities is obtained by means of special events, which have included in the past successful fashion shows and the sensationally successful Merry Mart of last year. Highlights this year will be the two-day polo tournament to be held at the Ranch June 1 and 2, and the fall fashion show.

Under a three-year plan now coming to an end, Country Friends formed committees to look into organizations which might welcome a financial boost in their own efforts to help other people. On the basis of visits, interviews, and presentations by representatives, these committees choose from among the

many organizations on the basis of need and worth, and Friends funds are allocated accordingly.

Examples of what Friends' donations have accomplished include a full-time social worker, a high fidelity set and a wrestling mat for Neighborhood House, which is a settlement house in a low-income area of San Diego; a sterilizer and typewriter for Guadalupe Clinic; a new kitchen for private use of the girls' dormitory in Children's Home, and Christmas gifts such as sports shirts and socks to youngsters at the Boys' and Girls' Aid Society.

Class Competition, Jumpers' Event, Annual Show Awaited by RSF Riders

Rancho riding club classes enjoyed an Easter egg hunt on the club grounds April 18, with over 13 dozen eggs, some exchangeable for special prizes, as the quarry.

Continuing mounting interest in the work of the Country Friends is testimony to the fact that many people in Rancho Santa Fe and in San Diego county care about what is being done for groups less fortunate than themselves, and also to the fact that the Friends, only a few years old, is already recognized as a responsible, serious agency for doing the job.

Coming events at the club include the semi-annual class competition May 5 and San Diego County Hunters and Jumpers association show at the Rancho ring May 14. Tentative plans have been drawn up for the annual show June 22-23, also, and the committee in charge has appointed Cecil Gray as chairman, with the following crew:

Vernon Burns, ringmaster; Art Baker, paddock master; Zona Gray, ring clerk; Ed Walz, Bob and Louise Rice, advertising, premium lists and entry blanks; Florence Trepte and Bobby Faulconer stakes; George Gere, trolley (Continued on Page Twelve)



In surroundings of unusual peace and loveliness . . . now serving . . .

LUNCHEONS 12:30 to 1:30 • DINNERS 6:30 to 8:00
SUNDAYS 12:30 to 2

For Reservations Phone PLaza 6-1131

R. M. CLOTFELTER, Manager



AUDIENCE at recent polo practice matches on new field near Rancho Riding club occupies reserved seats on mounts, includes members of Rancho club's classes for youngsters.

Pressure Water Setup Plans Gain Initial SFID Approval

Directors of the Santa Fe Irrigation district approved at their monthly meeting April 8 the master plan for a new water distribution system that will provide 30 pounds pressure throughout the Ranch.

William Black of the Volk engineering company of Los Angeles outlined the plan to directors, explaining that immediate needs in the new system, including construction of a new main line to the Solana Beach section, would cost about \$700,000.

Ultimate cost of the pressure system, designed to bring the Ranch's original gravity system up to date, might be upwards of four million dollars, Black said. Such a figure is not useful, however, he pointed out, since many improvements may be delayed for quite a while and others may never be made, depending upon the direction of future development at Rancho Santa Fe.

Included in the immediate costs was extensive work aimed at strengthening fire protection in the Solana Beach section. Another more or less immediate need, Black said, is for reroofing of reservoirs, made necessary by the continuing shift in balance of water use from irrigation to domestic consumption.

As an example of a less urgent construction need, Black cited another measure aimed at improvement of water quality—eventual building of a multi-million dollar filtration plant.

Directors, who hope revenue for the immediate needs of the new water system will come largely from sale of the district's tax-deed lands between Rancho Santa Fe and Solana Beach and in the Ranch, are finding that the road to the auction block occasionally looks more like an obstacle course. Among preparations already made are a land use study and an appraisal of the 500 Ranch acres, the latter to be revised following the drafting of suggested subdivision patterns by committees of association and irrigation district directors working together with local real estate brokers.

Matters still pending include: negotiation of a favorable option-purchase agreement with the county tax collector on the Ranch acreage; removal of the county dump from a potentially valuable site near Solana Beach; second-guessing of the state as to where the freeway will pass through the 500-odd acres, and working out of an agreement with the gas and electric company that will do minimum damage to the tax-deeded lands through which a requested power

'OPEN FOR INSPECTION' NOTATION UNNECESSARY

Many postal patrons are still needlessly writing "may be opened for postal inspection" on parcel post packages, Postmaster Haskett Strawn noted recently. Embattled Postmaster General Arthur E. Summerfield has advised that this is unnecessary, as a recent rule change abolished the requirement that sealed parcel post packages contain the notation or be subject to higher postal rates.

er easement will pass.

Two Aces Canned On Ranch Course

The Rancho Santa Fe golf course was the scene of two triumphant holes in one recently, according to pro Jim Boyle. Mrs. Clifford Randolph fired her ball into the cup with a number two wood from the ladies' tee on number three, and Ed Engler scored with a number five iron late in March on the 156-yard 17th hole.

Acreage
Residences
Building Sites
Investment Properties
In Rancho Santa Fe
And Adjoining Areas
NELSON and CHAPIN
Montgomery L. Hart, Associate
PASEO DELICIAS

BAY SHORE MOTORS



FORD of La Jolla

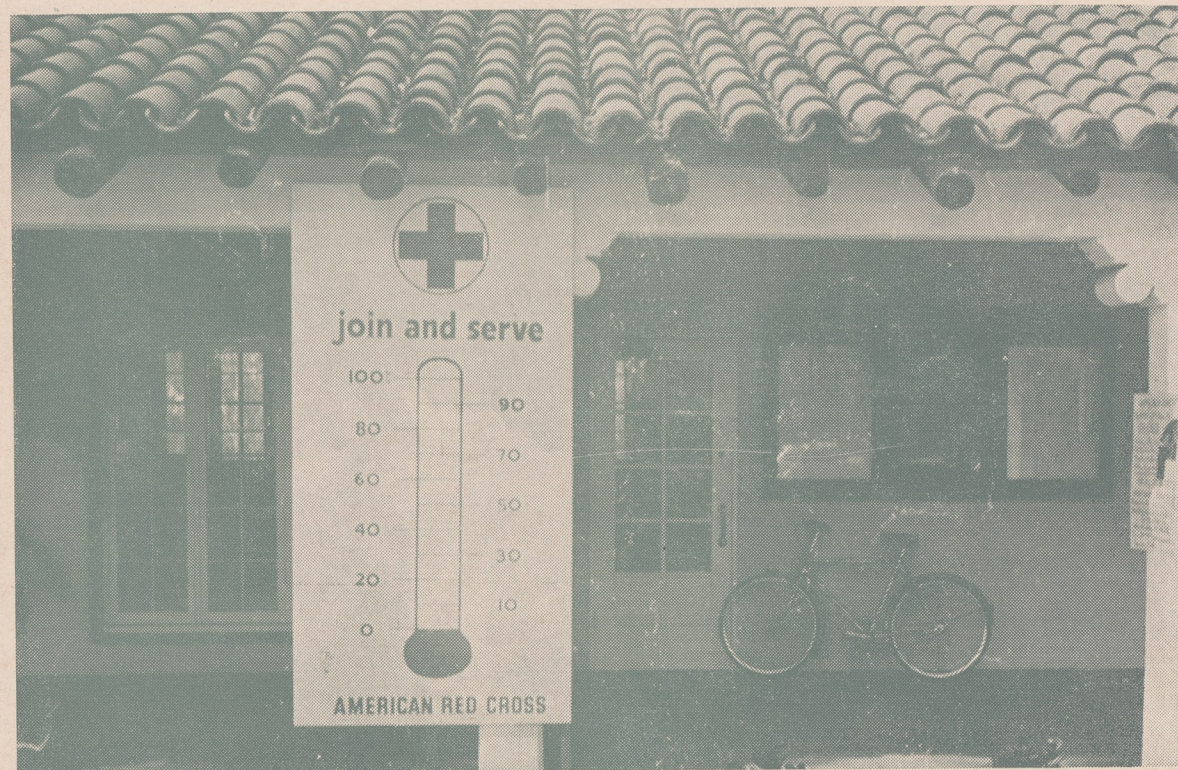


announce the appointment of **JOHN E. SHAW**

as their representative in Rancho Santa Fe to serve you better in Sales and Service

For an appointment or details . . . Please call PL 6-1549

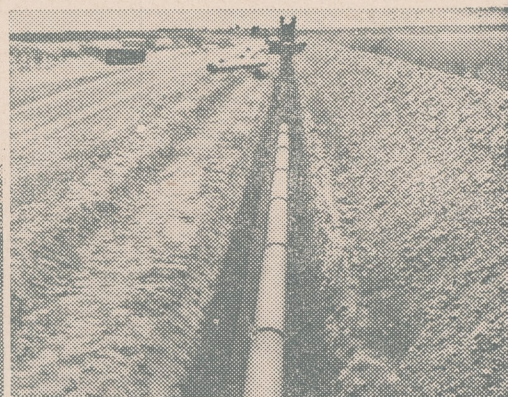
YOUR Q TO vim-full meals
Qualitee
COTTAGE CHEESE



OVER THE TOP—A 30 per cent increase over last year's quota only stimulated Ranch Red Cross workers and residents to drive the mercury right up out of the thermometer that registered contributions last month in front of the post-office, see photos to left and right. Quota was set at \$5020; final figure was over \$6000, reports Elliott C. McIntire, chairman of the Ranch campaign, below left.



On Farm Job...



After Farm Job...

Transite Irrigation Pipe protects against shutdowns

FARMERS EVERYWHERE have found using Transite Irrigation Pipe to be the sure way to avoid irrigation shutdowns, prevent water loss and cut pumping costs. Whether used for sprinkler or surface systems, Transite provides long, trouble-free service.

Made of asbestos and cement, Transite is strong and durable. When used underground in sprinkler systems, its resistance to corrosion both inside and out assures long service life, constant rated pressures.

Internal deposits due to tuberculation will not build up, thus fuel and power wastage caused by overworked pumps is avoided.

Transite will save vital water, reduce operating costs in surface systems for tail water pump-back, too. Specially designed couplings assure positive joint seal yet give line flexibility. These joints stay tight, are not affected by wetting or drying out between applications.



Johns-Manville TRANSITE IRRIGATION PIPE
AN ASBESTOS-CEMENT PRODUCT

WEBB BROS.

DISTRIBUTORS

252 W. Grand Avenue • Escondido, California



There are five, and this organizational setup is national: Christian Fellowship, Christian Faith, Christian Witness, Christian Citizenship and "Outreach." Sunday night programs are rotated among the various committees.

Sometimes the program will include a guest speaker — as in the case of an "outreach" program which featured showing of color slides on missionary work among Point Barrow eskimos; sometimes the group will simply lead a discussion on a particular topic — as in the case of the Citizenship committee's question and answer exploration of Communism and Christianity.

The Fellowship committee, for example, whose turn came up for the first time this month since 1957 organization of the committees, has a wide field of interests ranging from race relations and inter-religious relations to boy-girl relationships and plain old group recreation. At the Sunday night meetings, recreation may include games and dancing, or special parties and —during the summer months— outdoor barbecues.

Current officers of the senior Rancho Fellowship are: Moderator, Karen Knudson; Vice-moderators are: Faith, Carol Rice; Citizenship, Judy Cushing; Outreach, Gunter Amtmann; Fellowship, John Rice and Witness, Karen Dacus.

Junior Westminster officers are: President, Don Burland; Vice President, Betty Jo Smith; Secretary, Candy Evans; Treasurer, Melody Giffin; Activity Manager, Austin Keeth.

The "abandoned schoolhouse" in which the Westminster groups meet has been made available to the church through the generosity of the owner of the property, Fred Manning. The school property is used also for Sunday school classes, Jack Ables is superintendent of the program and "group teaching" methods are used. Just last month the office of the church, including Pastor Tolson's study, was moved to the building from its old quarters next to the Ranch post-office.

Youth Organizations Active Under Church's Sponsorship

Close to 30 Rancho teenagers held a meeting a few Sundays ago in an abandoned schoolhouse and considered Communism.

Following an hour or so of discussion, the "cell" broke up for refreshments and recreation, some of its members still talking about ideas.

One of a series of meetings held by the Westminster society

of the Ranch Community church, this particular one demonstrated as well as any the unique combination of fellowship and learning offered by the church program for young people.

The Westminster society, made up of 23 Juniors and 32 Seniors at present, meets once a week— Sunday nights—at the former elementary school across the street from the Garden club. Al-

though both groups have the guidance of advisers — Pastor Chester L. Tolson and Mr. and Mrs. Richard Blackledge for seniors, Mr. and Mrs. William Abbott and Mr. and Mrs. Charles G. McIlwraith for juniors — the church's aim is to make them as self-governing and self-directing as possible, as soon as possible.

The groups conduct their own worship Sunday nights and plan the educational programs in cooperation with their advisers. Everybody in the Westminster Fellowship is on a committee, Rev. Tolson explained recently.

Check OUR MANY Property Listings
... or CALL or WRITE US
ABOUT YOURS . . . PL 6-1111
Under personal supervision of Mae R. Perry
PERRY REAL ESTATE
Via de Santa Fe at La Flecha

Willis M. ALLEN Company

Since 1914

REAL ESTATE — INSURANCE
and
ALLEN MORTGAGE CO.

Long term life insurance loans
Serving San Diego County

La Jolla
GL 4-2158

Rancho Santa Fe
PL 6-1544

Resident representatives:

Mrs. Louise MacFall

Mr. David Hire



Trees, Shrubs Control Held By Association

It was noted recently that not all Association members are aware of the necessity for Association approval before trees or shrubs are removed, cut back or killed within 25 feet of any public road on Ranch covenant property.

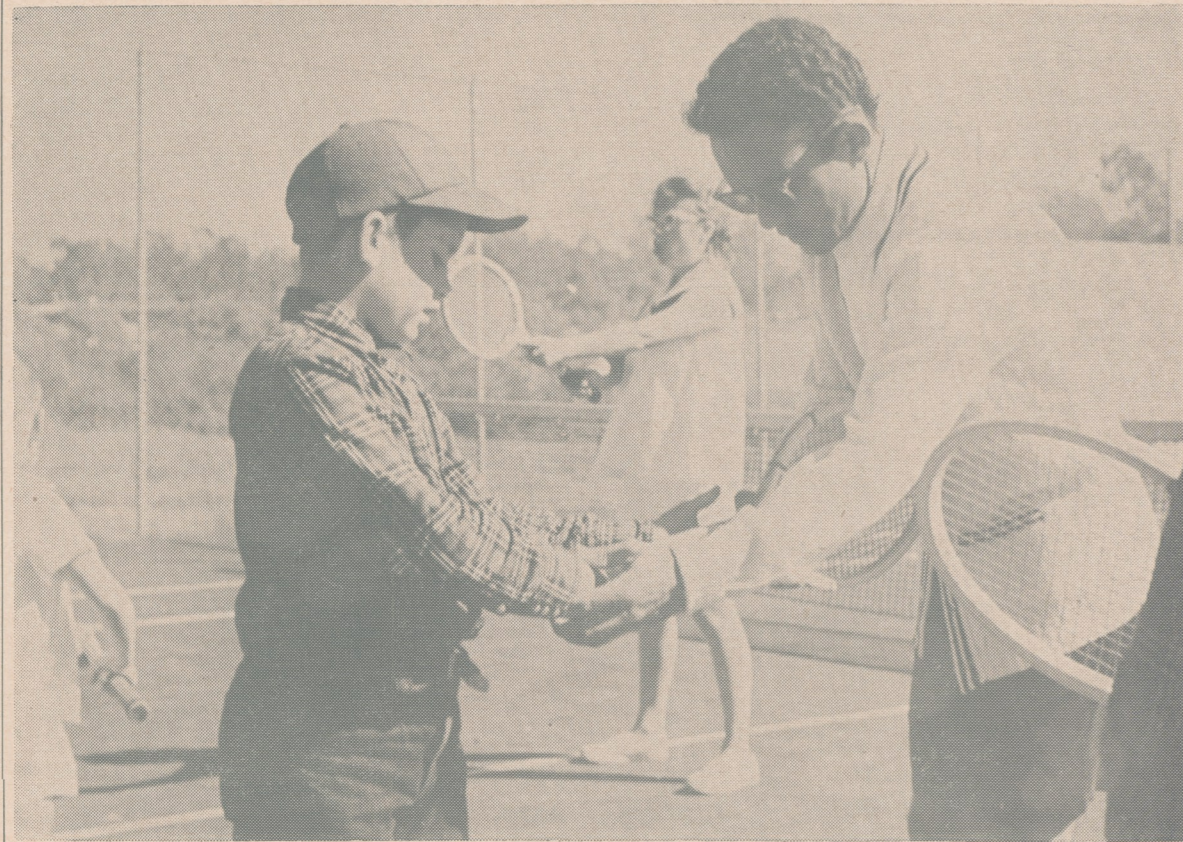
This ruling, which is a part of the covenant, applies to all trees or shrubs over five feet in height above the ground. "The Association," the pertinent covenant paragraph continues, "shall have sole authority and right to trim, remove, replace, plant or replant, or otherwise care for trees, shrubs and plantings in the sidewalk or other spaces in front of lots or adjoining them, subject to the authority of any county or other officials having superior jurisdiction. This section shall not apply to fruit or orchard trees maintained for their crops."

The Rancho Santa Fe Maintenance district, however, has kept up its regular beneficial landscaping activities on the Ranch this year with numerous tree plantings and replantings as well as the irrigation of thousands of the Ranch's justly famous trees.

The District, of which Carl Muench is chairman, has under its care 53 miles of streets and upwards of 5000 trees.

What I admire in Columbus is not his having discovered a world, but his having gone to search for it on the faith of an opinion.—Turgot

TENNIS CLINIC conducted by pros Ben Press and Maureen Connelly Brinker got off to flying start last month with capacity turnout of Ranch children eager to learn the game. Above, variety of swings and follow-throughs is seen during lesson; below, Press shows beginners best way to shake hands with the racket.



OLA JOHNSON...LANDSCAPE SERVICE and GARDEN SHOP

YOUR Garden
is our Business!

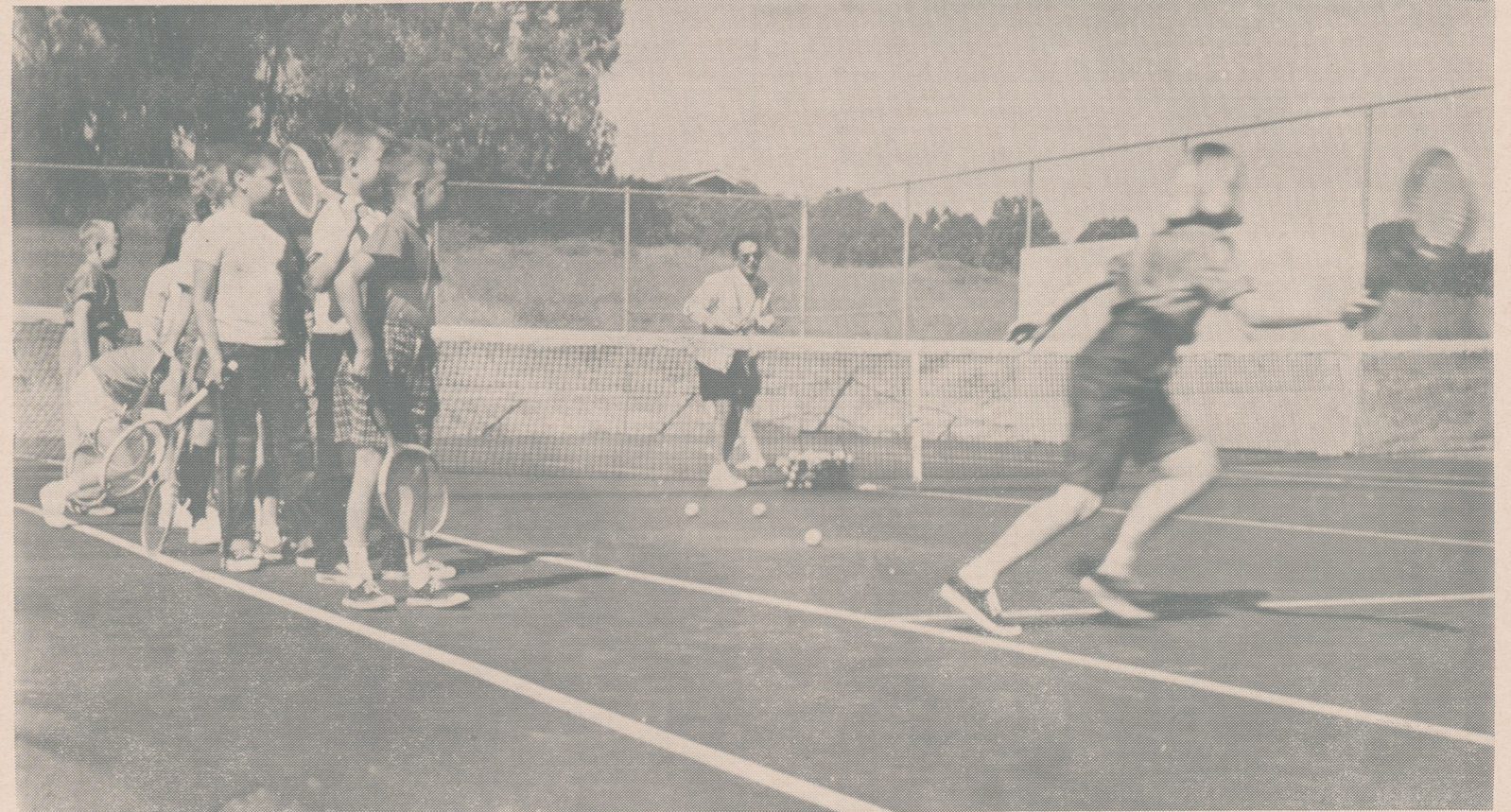
Your headquarters for landscaping supplies and service
CREATIVE and PRACTICAL DESIGNING

Sprinkler Systems
... simple, practical layouts installed to insure full coverage.

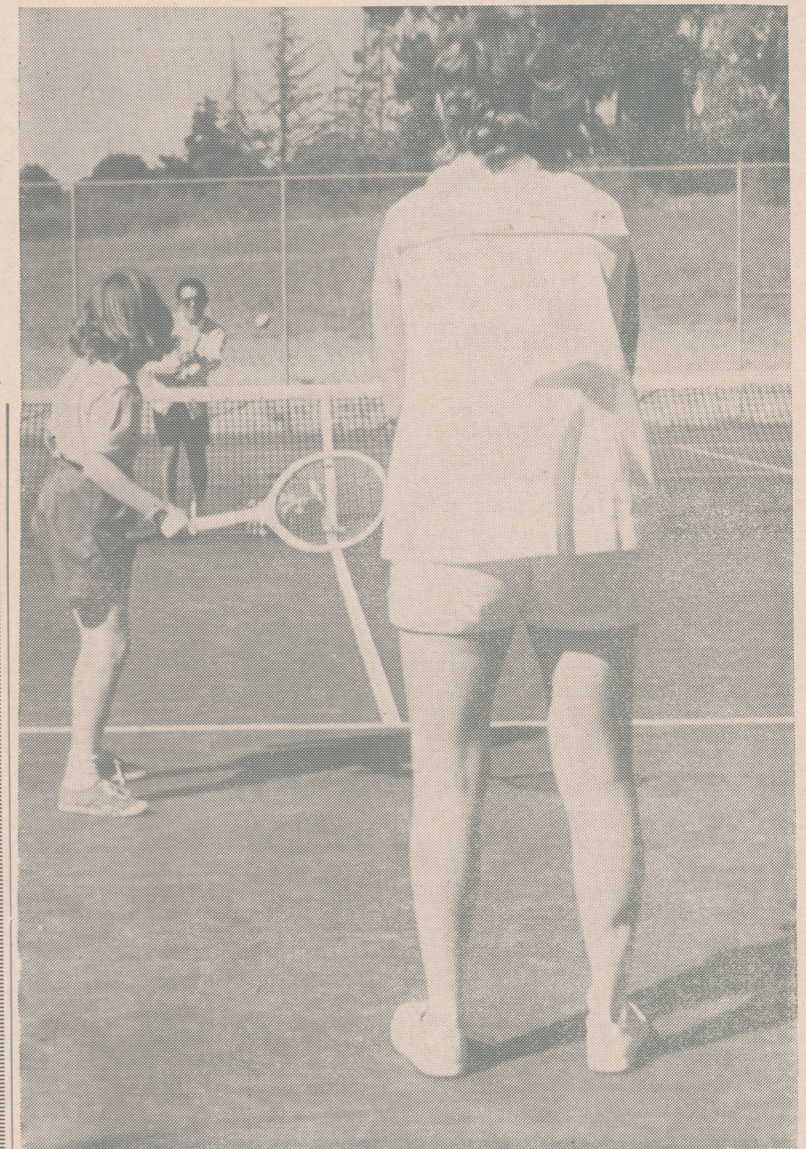
Drainage Problems
engineered by experts
Licensed Contractor
for your protection

We install Rock Gardens, Patios, Walks and Pools
in keeping with Rancho Santa Fe tradition.

RANCHO SANTA FE • LA GRANADA • In the Civic Center • Phone PLaza 6-1427



RUNNING GIRL, above, makes valiant try at retrieving fast ball while other Ranch beginners wait their turn. Right, Ben Press tosses one over the net; Maureen Connelly backs up young receiver.



IT'S GNAT TIME AGAIN!

Let us tell you how you can control those gnats
... and fertilize at one and the same time.
Enjoy your garden ... while it grows!



ART JURY APRIL I

Preliminary Plan Submittal Procedure Seen Time-Saver

Approval was given at the April 1 meeting of the Art Jury to John Strader's application to construct a residence on a portion of Lot 8, Block 33, plans dated March 28, in accordance with changes noted on these plans by Art Jury architect George Vernon Russell.

The Jury also considered the application of Jim Witherow to construct a residence and garage on a portion of Lot 3, Block 48, plans dated April 1, with additional showings to be mailed to architect Russell, and to the application of Arnold Buck to subdivide portions of Lots 4 and 5, Block 47, sketch dated Feb. 1957, the Jury's opinion being submitted to the board of directors.

Howard Otten was appointed as a committee of one to draft a letter to be sent purchasers of property in Rancho Santa Fe, suggesting that preliminary plans be submitted to the Art Jury prior to final drawings. It was felt that this procedure would save time and expense all around.

Approval was given to the request of William D. Witherspoon to construct an addition to his residence on a portion of Lot 3, Block 27, plans dated March 29, and consideration was given to the application of Charles K. Fletcher to construct an addition to his residence on Lot 89,

Practice Bombing Range Abandoned

The closing recently of the practice bombing area on the outskirts of Rancho Santa Fe did more than relieve residents of a nuisance; it also gratified them by proving that the Navy is sincere when it says its aim is to cooperate with local civilian communities whenever possible.

Dr. Clarence William Lieb, one of those disturbed by training activities at nearby "Lake Hodges Target," brought the matter to the Navy's attention recently in a letter; a reply by Rear Admiral C. C. Hartman, commandant of the Eleventh Naval district, informed Dr. Lieb last month that the Navy had taken steps to close down "Lake Hodges Target" for an indefinite period.

Now there's a coffee maker that can be plugged into a car's cigarette lighter!

Map 2089, plans dated March 5. Additional showings have been requested of Mr. Fletcher.

The Art Jury also approved the following applications:

Rev. George C. Culbertson, to change a fence in accordance with photos submitted in March, on a portion of Lot 11, Block 37; David A. Burger, to construct a garage and make changes in the front of a residence on a portion of Lot 1, Block 23, plans dated March 8 and revised March 29, after Mr. Burger revises plans in accordance with instructions noted thereon by Architect Russell, Mr. Smart to check changes.

Consideration was given to the application of John MacFall to construct a roof over a patio on Lot 5, Block 43, sketch dated March 28, with additional showings requested; to the request of Andy Anderson, for a variance on a portion of Lot 8, Map 2057, letter dated March 21, with the Jury's opinion being submitted to the board of directors, and to the request of Minton Cronkhite for lot re-alignment of Lot 1, 15, with the Jury's opinion being submitted to the board of directors.

It was moved, seconded and unanimously carried that the next Art Jury meeting be held Thursday May 2, instead of May 6.

Approval was given also to color samples for exteriors submitted by Arnold Buck for a residence and garage on a portion of Lot 114, Map 2129.

Transfers

Recent Rancho Santa Fe real estate transfers as recorded in the Daily Transcript include:

J. Burke Hill to H. A. and Patricia Mesier, Lots 9 and 10, Block E, Rancho Santa Fe.

E. O. and Juanita Peterson, to Frank O. and Buella T. Maxwell, Lots 94 and 95 of resubdivision of a portion of Block 18, Map 2089, Rancho Santa Fe.

Dorothy B. Patton to Hardy H. and Louise B. Kent, a portion of Lot 4, Block 16 Rancho Santa Fe.

Harold C. and R. Maxine Nigg to Sun Finance Co., a portion of Lot 8, Block 48, Rancho Santa Fe.

Earl C. and Dorothy Manning to Arnold W. and Thelma J. Buck, a portion of Lot 4, Block 47, Rancho Santa Fe.

Arnold W. and Thelma J. Buck to Earl C. and Dorothy Manning, a portion of Lot 1, Block 47, Rancho Santa Fe.

Forrest C. and Lillian C. Schaefer, to George W. and Merle E. Alexander, a portion of Lot 12, Block 47, Rancho Santa Fe.

Robert T. Jr. and Elizabeth A. Martinet, to David and Nancy I. Hire and Joe F. and Helen C. Wolfe, a portion of Lot 1, Block 22, Rancho Santa Fe.

Vincent C. and Cathryn N. Williams to John C. and Roberta F. Rule a portion of Lot 6, Block 27, Rancho Santa Fe.

John C. and Robert F. Rule to Union Title and Trust Co., a portion of Lot 6, Block 27, Rancho Santa Fe.

If we educate enough of our individuals in the fundamentals of peace and security, frictions and irritations between countries will rapidly diminish.—George C. Marshall

Hotcakes, Hogan Recipe, Attract Patrons to Club

The 300 per cent increase in attendance at golf course clubhouse "Sunday breakfasts" does not necessarily date from the first time chef Milo Lenton served his scrumptious and celebrated "applesauce hotcakes" — but there is nevertheless probably some connection.

The hotcakes, compounded in mysterious proportions of sour cream, applesauce, strawberry jam and sausages, have caught on rapidly at the clubhouse, as they did when chef Lenton first cooked them up while working at the Tamarisk club some years back.

At that time, pro Ben Hogan put in a request for the strange breed, and Lenton — unable to find a word about them in any recipe book he consulted — concocted the recipe himself. The hotcakes went over big with Hogan, and it may be that some of their subsequent success is because of consumption by people who know their history and hope to improve their golf game through association by eating the same hotcakes.

At the other extreme, people with wolfish appetites and no superstition have been finding chef Lenton's New York steak dinners — made possible recently by the new reach-in refrigerator — a special treat. Hours during which these delicacies and others will be available this summer have been announced by the clubhouse as Tuesday through Friday, 11 a. m. to 7 p. m., and Saturday and Sunday, 8 am to 7 pm. The clubhouse is closed Mondays.



NEW QUARTERS for Village Community church offices, including Pastor Chester Tolson's study, are across the street from Garden club, in the former schoolhouse building.

Attention While Doing Well Child's Need, Says Educator

Trenchant "guest expert" at a meeting last month of the Rancho Santa Fe Elementary school PTA curriculum committee was Percy A. Washabaugh, who comes into contact sooner or later with most Ranch children as principal of Warren Junior High school.

Questions about the junior high program kept Principal Washabaugh, a relaxed but effective speaker, on his toes until adjournment. His emphasis on the "social" aspect of school training drew resistance from one concerned parent who maintained that her son was "in school, not in the world."

It was Mr. Washabaugh's observation, however, that most students come to the junior high better prepared "subject-wise" than emotionally. There are even occasional students, he noted, who would actually relish a good beating from their parents or teachers, rather than be perpetually ignored — as may happen at home. This bizarre by-product of the need for attention, he said, shows how important it is for adults simply to take an interest in their children and in their activities.

Such an interest, he stressed, doesn't do much good if it comes only when the child is in trouble or doing bad work. Even teachers, he noted, respond disproportionately to praise, as against criticism, sharing this gener-

al human trait with children and with other adults; and a teacher who has been thanked by a thoughtful parent for helping one of the children in his class, he said, may as a result have his draining batteries recharged for a full week or longer.

Although school is not necessarily "the best way to get an education," Mr. Washabaugh commented, it is by all odds the easiest, making available as it does the accumulated knowledge and experience of others. His philosophy of the school's role, as he expressed it at last month's meeting, was that the school should assist the parent to educate the child.

The question of spelling, which came up later in discussion, involved to some extent this attitude toward school activities. Obviously, Mr. Washabaugh said no child — or adult — can possibly memorize more than a fraction of all the words in the dictionary; but he can certainly be encouraged to use the dictionary when he needs it and he can be made to understand also that spelling is particularly important when he wants to impress somebody. Most important of all, the principal noted, is the school's place in encouraging the failing "reverence for books."

Other questions explored by Mr. Washabaugh and the committee involved the role of electives in the school program, and

the policies of "heterogeneous grouping" and automatic promotion. County coordinator Dr. Van Allen, who has been working along with the committee since its inception, observed that statistics showed gains to be negligible in most cases where a child has been left back to repeat a grade. Losses, however — in terms of the child himself and the social climate of the class which receives him — are significant.

The public school system — which is no more perfect than anything else on earth, particularly in view of some of the disadvantages under which it works — seems to have done pretty well on the whole, Mr. Washabaugh declared. Perhaps no better testimonial to the learning ability of the children who had passed through it could be found, he said, than the spectacle in World War II of scores of boys who had been taken from the prairies and given the job of navigating a multimillion dollar boat — and did well at it.

GARDEN & PATIO FURNITURE

Lowest prices in S. D. County
FLOYD'S RED BARN
VISTA • OPPOSITE DEPOT
PALACE 4-2512

Life Time Fence Co.

Redwood Fences
Steel Fences
Free Estimate—Time Plan
Phone (collect) SH 5-6311
540 W. Grand • Escondido

Where to buy it . .

Gailey's Photo Supply
"Escondido's Most Complete"

230 E. Grand
Phone SH 5-7823 • Escondido

Custom Picture FRAMING

Models • Crafts
Art Materials

The HOBBYCRAFT Shop

130 N. Acacia, Solana Beach
SK 5-4547
Open 'til 9 P.M.

Call us for FREE ESTIMATES on CARPETING

Firth • Callaway
Sanford • Gulistan • Others
Phone SK 5-1858

Little Rocker Shop

235 S. Highway 101
SOLANA BEACH

HEYMAN'S JEWELRY

Theatre Bldg. on the PLAZA
Expert Watch Repairing
SK 5-2590 • Solana Beach

Wright Concrete Products

2125 San Elijo - PL 3-3884
CARDIFF

The Village Forge

Ornamental Iron Works
CUSTOM MADE FIRE SCREENS
all sizes, shapes,
materials, designs.

Custom Made Name Plates
Highway 101 at Grandview
Ph. PL 3-1641 • Leucadia

GAIN'S FIX-IT

Cain is able to Fix Anything
Washing Machines
Lawn Mowers • Appliances
Moderate Prices
SK 5-1188 • SK 5-1036

CULLIGAN Soft Water SERVICE

for BETTER LIVING
111 So. Cedros P. O. Box 278
SOLANA BEACH
Phone SK 5-1022

PLEASE . . . when you buy MENTION the "Bulletin"

MARVIN K. BROWN

CADILLAC, INC.

Sales and Service
First Avenue at A
SAN DIEGO
BE 2-5184



BULK RATE
 U. S. POSTAGE
P A I D
 Rancho Santa Fe,
 California
 Permit No. 15



POLO FIELD south of Rancho Riding club, to be used June 1 and 2 for Country Friends — sponsored invitational tournament, was broken in early this month with a practice match in which La Jolla and Rancho Santa Fe participated. Proceeds from the two-day tournament will be distributed among ten welfare agencies. Attendance of some 1500 a day is expected at the matches, with 200 boxes available, as well as 100 special spaces for those who wish to view the games from their cars. Regional directors and alternate for the Ranch are Mmes. Harry Wenz, president of Country Friends, and R. G. Medicott. Tickets may be obtained from Mrs. Ben Fletcher.

Riding Show

(Continued From Page Four)
 phies and ribbons; Russ Fellows

and Alwin Trepte, treasurer; Dr. Harry Hill, veterinarian; Steve Lund, farrier.

Clyde Kennedy, Western and Hunters & Jumpers judge; Ray

Kettman, English judge; Malcolm Rossoll, announcer; John

Havens, secretary; Mrs. Charles Irvine and Harriet Divine, en-

tries; Ed Frazer, grounds; John Rice, food; Art Baker, box seats; Zona Gray, posters, and Edith Havens, publicity.



NEIL G. McGREGOR, Golf Course Manager, and BOB WANNER, Greens Superintendent on the 9th Green at Rancho Santa Fe Golf Course

Memo to ...
 Mr. McGregor

I think it's time to give the greens a feeding of Milorganite. Hot days are ahead and we want the greens to be lush and tough for the hard summer playing ... and Milorganite will do the trick!

Bob Wanner

Sold at these Shops ...

- De Haan's Shoreline Nursery
- Rancho Hardware
- Ola Johnson's Garden Shop
- Williams & MacPherson Nursery
- G. G. Wilkens
- Torrey Pines

MILORGANITE IS AVAILABLE IN 40 LB., 80 LB., 100 LB., BAGS

Sole Distributor for San Diego County ... Butler's Feed Mill, in San Diego Since 1892

1497.002.023