

ASSOCIATION BULLETIN

PUBLISHED BY THE RANCHO SANTA FE ASSOCIATION FOR THE BENEFIT OF ITS MEMBERS

Volume 5, Number 2

Rancho Santa Fe

February, 1958

In this issue:

Board Meetings

Feb. 7

Feb. 21

Art Jury

Mangore Studies

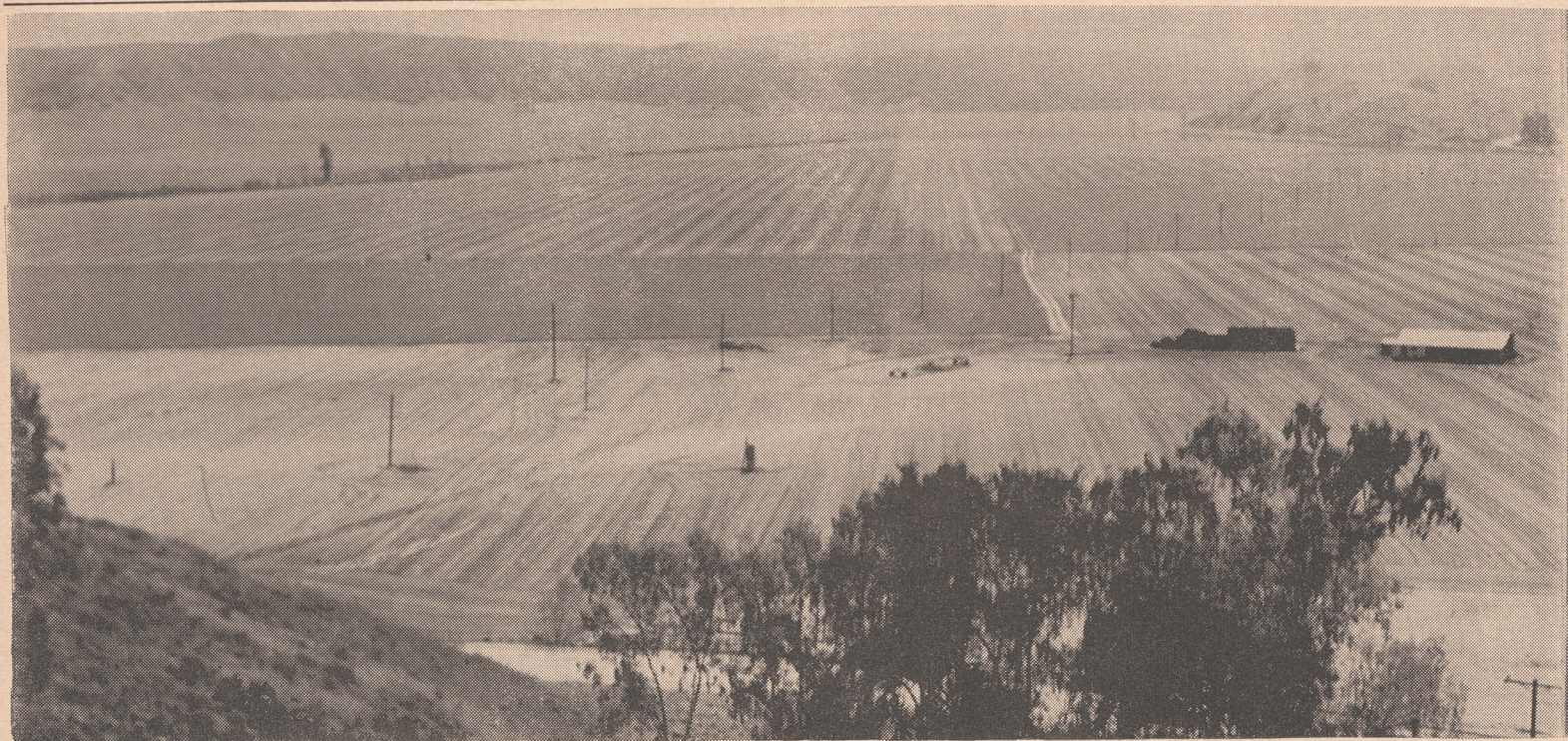
Rummage Sale

Riding Club

Golf



An estimated 2500 persons attended the Garden Club's annual 2-day rummage sale in February.



SUBJECT TO FLOOD THREAT — This is a view of the San Dieguito River basin lowlands where the Mangore studies subcommittee on flood control recommends that no Rancho Santa Fe sponsored developments be located until flood control steps are taken by the City of San Diego.

Flood Control Subcommittee Warns Against RSF Development of River Basin Property

The threat of possible floods in the San Dieguito River basin is such that no Rancho Santa Fe development projects should be undertaken in the low area until a dam of proper size is built.

This is the gist of the first final report rendered by a subcommittee chairman of the Rancho Santa Fe Citizens' Committee for Mangore Studies, according to George Richardson, chairman.

The report, dated Feb. 6, was announced by W. N. Vandersluis, Flood Control Citizens' Subcommittee chairman, at the second bi-monthly meeting of the subcommittee chairmen Feb. 7.

For planning purposes, and with respect to Mangore Report studies, the Flood Control Citizens' Subcommittee conclusions reduce the ultimate maximum population of the Rancho Santa Fe area by an approximate 1200 persons, Richardson emphasized in submitting the report to Association members.

No dam project for flood control alone is economically justified, although a multi-purpose reservoir for both flood control and water conservation would be

feasible on the basis of 1955 costs, the report stated.

"But the cost of such a project could not be met by the citizens of this community, and would properly fall within the responsibility of the City of San Diego," Vandersluis said.

Recommended for eventual construction is a dam located just below the city's present Hodges Dam which would back up water over a portion of the San Pasqual Valley, much of which is also owned by the San Diego city.

The city council of San Diego has, according to the report, indicated by resolution that it would build such a dam under certain conditions. But no time has been set, and the increase of Colorado River water that will be delivered through San Diego's second aqueduct to be completed in 1959, indicates that postponement of this project can be expected, according to the report.

It is believed, however, that some sort of water storage and flood control project will be built in this area. But the com-

mittee anticipates that this is about 20 years away.

"When and if such a dam is built, the Association should go into the matter further," Vandersluis concluded.

The other members of the Flood Control Citizens' Committee who concurred in this report are H. F. Bakewell, Hubert Brooke and Ray Grisct.

DISTINCTIVE TAILORING for Ladies & Gentlemen



Select stock of finest imported English woolsens. . . also an outstanding collection of Sport Coats and hand-tailored Trousers made of English fabrics.

BERNHARD GERKE
7945 Ivanhoe • GL 4-2787
La Jolla (adjacent to Denslow's)

For that new pool SPECIFY...



Jacuzzi SWIMMING POOL EQUIPMENT

Be sure the equipment for your swimming pool bears the name "Jacuzzi". Jacuzzi's engineering know-how and years of nationwide experience are your assurance of lasting satisfaction.

Complete sand-type filters, vacuum cleaners, lights, brushes, ladders . . . everything for your pool.

BE CHOOSEY BUY JACUZZI!



Jacuzzi SWIMMING POOL EQUIPMENT

Webb Bros. DISTRIBUTORS
252 W. GRAND AVE. ESCONDIDO

Progress Reported as Mangore Studies Subcommittee Chairmen Gather for Bi-Monthly Conference Sessions

Progress was reported by the ten subcommittees of the Citizens' Committee for Mangore Studies at the second bi-monthly meeting of subcommittee chairmen held on February 7 at Association headquarters.

According to George Richardson, chairman of the Citizens' Committee, work is well under

way on continuing studies by these groups to provide Rancho Santa Fe with a long-term plan for orderly expansion along lines compatible with the tastes and desires of its citizens.

First to Report

First to report at the Feb. 7 meeting was the Flood Control subcommittee chairman, W. M.

Vandersluis. His committee was first to render its final report after completion of its assignment. (See news story on page 2). Congratulations and appreciation were expressed by the chairman, Mr. Richardson.

In rendering a progress report on work accomplished by the Health and Sanitation subcommittee, Dr. Herbert W. Meyer, chairman, stressed the importance of an adequate sewage system to insure the safety of a growing population, and the fact that Rancho Santa Fe health problems are closely tied to those of her neighboring coastal communities.

Some 250 replies have been received from the questionnaire sent to Rancho Santa Fe citizens on sanitation questions. This is a better than 50 per cent return, Dr. Meyer said.

"A response from every citizen to this questionnaire is essential to the success of the committee's studies," Dr. Meyer added, in urging full cooperation from all residents.

The committee is studying present Sanitation District facilities and the possibility of their extension, including disposal plant capacity and the improvement costs. Studies are being coordinated with the chief engineer of San Diego county's Public Works department and with the

sanitation engineer, Dr. Meyer said.

Committee Being Formed

The report also stated that a committee is being formed among coastal area communities (Leucadia, Cardiff, Encinitas, Solana Beach and Del Mar) to study present and future sanitation developments. Rancho Santa Fe has been invited to participate, following a meeting in Encinitas between committee members and the Water Pollution Control Board of District No. 9 on January 31.

Another possibility reported by the Sanitation committee was that its preliminary study seems to indicate the need of an adequate sewage system before Rancho Santa Fe can safely absorb as many as 5000 residents.

A zoning factor which contributes to this conclusion is a new regulation to the effect that no leach line can be laid closer than 50 feet to any water pipe, Dr. Meyer said.

School Report

Russell Fellows, School subcommittee chairman, was joined (continued on page eleven)

Chairmen Stress Importance Of Future Government Study

A highlight of the third bi-monthly meeting of subcommittee chairmen of the Citizens' Committee for Mangore Studies, held Feb. 21, was the emphasis placed on factors developed by committee studies which will contribute to the Mangore Corporation's second public report on government.

Additional facts were also reported by Dr. Herbert W. Meyer, chairman of the health and sanitation subcommittee, which emphasize the increasingly serious sanitation problem which faces Rancho Santa Fe.

Need for a drafting and financial committee and for another to deal with education and information, the cost of parking facilities in the business district and the need to confine through highways to the Paseo Delicias-Via de la Valle route were also discussed.

Factors which affect governmental organization in Rancho Santa Fe community planning were brought up at the meeting as follows: (1) complications of taxation and finance, (2) problems of local authority and law enforcement and (3) variations in both jurisdiction and the boundary lines of service districts.

This latter category includes such matters as schools, sanitation, water, police and fire protection.

A second report is being prepared by the Mangore Corporation to deal with such problems as these in a systematic way, and find solutions to incorporate into Rancho Santa Fe's long-range planning.

Studies being carried on under the Citizens' Committee will contribute to this report.

With respect to the sewage problem, it was reported that approximately one third of those responding so far to the sanitation subcommittee's questionnaire have found it necessary to increase their own sanitation facilities since initial construction.

Data resulting from this questionnaire will be supplied to the

Association board for use as a guide to future homebuilders in insuring themselves adequate facilities from the start.

It was also reported that Rancho Santa Fe's present sewage system and Imhoff tank serves a population of only 240 persons and is already operating at virtual capacity.

In view of the many potential building sites which are legally entitled to sewer connections, a study of costs to enlarge treatment plant capacity will be undertaken.

Approximately two acres of parking space is all that remains in the business district for expansion, according to the business district subcommittee. At present land values, the cost of parking space per car is approximately \$1800.

the **Fireside** RESTAURANT and COCKTAIL LOUNGE



ONE OF THE SOUTHLAND'S FINEST!

A noted landmark for fine American fare, served in an atmosphere of quiet charm! Luncheon, cocktails and dinner . . . complete banquet facilities. Member of Diners' and Esquire Clubs.

Your hosts:
Lois and Murray Myerson

Highway 395 at W. WASHINGTON . . . ESCONDIDO, CALIFORNIA

Mangore Quiz Facts

What is the Mangore Report and what is its significance for the future of Rancho Santa Fe and its residents?

(This is the first of a series of question-and-answer features on the Mangore Report to be run in the Bulletin. Readers are urged to mail in questions which they would like answered to Post Office Box 1151, Rancho Santa Fe, California.)

At the request of the Board of Directors of the Rancho Santa Fe Association, the Mangore Corporation of Los Angeles made a preliminary study last August of present and future factors and possible planning objectives for development of this residential community.

This was followed by an extensive survey of facts and opinion among Rancho Santa Fe residents based on a scientific and completely objective sampling technique. Data were scientifically weighted and included the opinions of both covenant and non-covenant property owners as well as renters.

The information thus developed was incorporated into the major report and basis for future planning by the Association which is now known as the Mangore Report.

BOARD MEETING FEB. 21

Board Names R. M. Clotfelter To Pollution Control Post

At its second regular meeting in February the Rancho Santa Fe Association board of directors appointed R. M. Clotfelter to serve as representative on the local sewerage study group of the State Water Pollution Control Board which meets in Encinitas.

Other highlights of the meeting included approval of an agreement covering sewer easement through Association property for adjacent property owners, the approval of one new covenant application and two subdivision request and the denial of one other.

Following attendance by members of the Mangore studies subcommittee on health and sanitation

at a meeting of the Water Pollution Control Board study group in Encinitas, the appointment of a regular representative and an alternate from Rancho Santa Fe was invited.

Upon receipt of this request, the board took the matter up with Dr. Herbert W. Meyer, sanitation subcommittee chairman, and then invited R. M. Clotfelter to serve as representative upon his recommendation.

"This development is very important to the future growth of this area," said Ward A. Miller, Association president.

Another significant development was approval by the board to grant an easement across Association property near the golf course restaurant to adjacent property owners in return for sharing in the cost of a new sewer line to the Sanitation district pump house to serve both their needs and the Association's.

The board authorized signature of covenant acceptance for Joseph H. and Anna W. Kapl, Loma Verde Acres.

Subdivision requests were approved for Dr. and Mrs. Karl Berglund and for Mrs. Irene Barber. A similar request by Lloyd B. Farmer was denied.

Mrs. Barber's application was approved subject to the 5-foot easement along each property line for an eventual master sewer system.

Approval was granted to requests for the keeping of animals by B. W. Mehren and George W. Ravenscroft Jr., both subject to facilities conformity to Art Jury agreement.

Bulletin Invites News Items; New Editor Appointed

The appointment of Thomas B. Robertson to edit the Association Bulletin and handle its advertising is announced by Ward A. Miller, Association president.

Bulletin headquarters are established at the Association office, adjacent to the golf shop, and news items will be welcomed from Rancho Santa Fe residents. The telephone number is PLaza 6-1175. Mail for the Bulletin should be directed to Post Office Box 1151, Rancho Santa Fe.

Up-to-date news coverage for Association board and Art Jury meetings is planned, with reports published in the issue of the same month in which they occur. Other developments and activities of interest to Rancho Santa Fe residents will be similarly covered.

Robertson, a public relations and advertising consultant of San Diego, will receive news items which are mailed or telephoned in, and will write them up for each issue. Deadline for receipt of information is on or about the 15th of each month.

Mrs. Connie Resnik, the Association's assistant secretary, will take telephoned news items and transmit them to Mr. Robertson.

Suggestions for expanding or improving news coverage through the Bulletin will be welcomed by Dr. Neil Randol, vice president of the Association, or by the editor.



NEW FLEET IN OPERATION — Inspecting the Association's 23 new Westcoaster electric golf cars are Ward A. Miller, president, right, and Neil McGregor, golf course manager.

BOARD MEETING FEB. 7

Capt. B. F. Jenkins Named To Art Jury as Alternate

A highlight of the regular meeting of the Rancho Santa Fe Association board of directors on Feb. 7 was the appointment of Capt. B. F. Jenkins, USN ret., as an alternate member of the Art Jury.

The board also approved the expenditure of \$362.85 for oiling El Secreto in front of two lots owned by the association.

Garden club beautification projects for Rancho Santa Fe were explained to the board by Mesdames H. W. Booth, Jr., and William Weddell and by Mr. Weddell. H. J. Johnson also spoke on flood control.

Legal matters of the association

were discussed with the board's attorney, H. B. Clayton.

Glenn F. Lewis, building commissioner, reported on construction in the Rancho Santa Fe area for January.

Secretary-Manager Smart reported gross revenue for the month of January as follows:

Green fees were \$4429.50 in cash, \$3074.00 in advance playing privileges, total \$7503.50. The golf shop grossed \$1200.00 for carts, \$281.00 in storage charges, \$143.75 for lockers, \$2746.28 for services and merchandise, for a total of \$4371.03. The restaurant and bar brought in \$5469.09.

The president's report was heard. It included progress on letters being written to non-covenant property owners.

Capt. Jenkins brings much experience in land development and housing to the Art Jury. After retirement from the Navy in 1946, he formed San Diego Associates, Inc. This company has been prominent ever since in developing veteran housing in San Diego and, most recently, the Bellevue Center Apartments and State College shopping center.

A graduate of the U. S. Naval Academy in 1916, Capt. Jenkins saw active duty in both World Wars. He was prominently associated with the lighter than air service at Moffat Field during World War I at Lakehurst, N. J., at Houma, La., and at New Orleans.

Rancho Santa Fe
Country Homes and Homesites

R. M. CLOTFELTER

Licensed Real Estate Broker

Since 1931

PLaza 6-1422

Paseo Delicias

ART JURY MEETS FEB. 14

Friday Meetings Inaugurated With Full Business Agenda

Inaugurating its newly scheduled meeting date on the second Friday of each month, the Art Jury handled a full roster of applications and requests Feb. 14, St. Valentine's day.

Under the chairmanship of Claude A. Welles, recently elected president, seven applications for residential construction or improvements were approved and eight more were given consideration.

The jury gave final approval to two applications for the construction of residences and to another four covering additions or improvements. Two more were given consideration.

One preliminary application was approved and two more were considered.

Also considered were an application for lot re-alignment, an application for reconsideration of subdivision, a request for setback variance and two others for the keeping of animals.

Approval Granted

Applications winning final approval were the following:

George M. Gere for residence and garage in the Gere subdivision, and The Inn for construction of a fence—both being approvals of permits issued since the jury's last meeting Jan. 6.

R. G. Medicott for an addition and fireplace at residence near the end of Las Planideras.

Carl W. Croft for an addition to residence near the west end of Camino del Norte.

Herbert O. and Sally B. Perry for a residence, carport and pools on lot at corner of Cord-oniz and Sobre los Cerros.

Nicholas Marsch Jr., for a guest house and carport alteration on La Valle Plateada.

Preliminary approval was given to an application by Mrs. Irene Barber for residence and keeping animals (two horses)

garage on Los Morros.

Consideration was given to the following projects:

Preliminary application of Mr. and Mrs. Lou Beckett for residence and garage off the end of El Acabo road.

Application of Mr. and Mrs. Forest E. Monroe for residence and carport in the Gere subdivision.

Preliminary application of Charles Loomis for residence and garage on San Elijo near Avenida de Acacias.

Application of George M. Ravenscroft Jr., for the keeping of animals (two horses) on lot at Linea del Cielo.

Request of B. W. Mehren for on a lot in the same location. Both are near Las Flores.

Request of Sails Realty, Joy L. DeLozier, owner, for a setback variance on lot at corner of Paseo Delicias and La Fremontia.

Application of Mr. and Mrs. Karl F. Gantner for lot re-alignment on El Montevideo.

Application of Dr. and Mrs. Karl Berglund for reconsideration of subdivision of a lot on Los Morros near the riding stable.

The Art Jury also granted approval of exterior color samples submitted by Brunson Properties, Inc., and by Charles Oppermann.

Other regular members of the Art Jury are Carl G. Muench and George Vernon Russell.



WE LIKE THEM — Mrs. John E. Shaw, chairman of the Women's Golf Division, left, and Miss Margaret Muench who turned in low gross for the month try out the new golf cars. They are looking over improvements made at the 16th tee.

Women Golfers Score Well In February; Teams Play

Some 40 women golfers are turning out every Tuesday during this winter season, and some very respectable scores are being turned in, according to Mrs. John E. Shaw, chairman of the Women's Division of the Rancho Santa Fe Golf club.

Lowest scores for the past month are topped by Miss Margaret Muench with the low gross of 79. Deducting her 8 handicap, Miss Muench nets a very sharp 71.

Mrs. Charles Hammond chalked up an 82 gross which, with her 12 handicap, results in a net score of 70.

Mrs. Lewis K. Pratt posted a gross score of 87 less 16 handicap for a net of 71. Mrs. Russell H. Millar had a gross 91 less 24 handicap for a net 67.

Lowest net score for the month was earned by Mrs. Charles H. Bock. She posted a gross 93 less 27 handicap for a net 66.

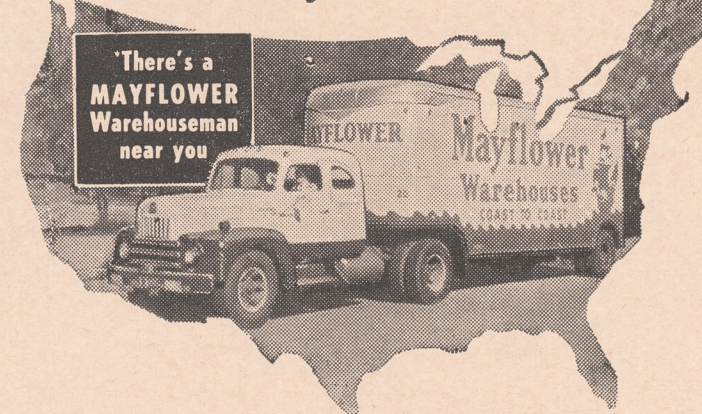
On Feb. 14, St. Valentine's day, four Women's Division members journeyed to Santa Ana and played in a best-ball of partners tournament. They were Miss Katharine Knight, Mrs. L. K. Pratt, Mrs. James Huntley and Mrs. Jack Berry.

During the past week, Miss Margaret Muench and Mrs. Howard Mitchell played in an invitational best-ball of partners tournament at the Annandale Country club in Pasadena. Results were not yet available at press time.

Three new members were welcomed by the Women's Division during February. They are Mrs. Albert H. Dutton, Mrs. Charles V. Gibbs and Mrs. James W. Stockton.

over 500 Mayflower Warehouses

to serve you



COLE MAYFLOWER

Cole La Jolla Truck & Storage Co.
7851 Herschel La Jolla Ph. GL 4-0444

Assessor Offers Tax Counselling

John McQuilken, county tax assessor, has advised that property owners in Rancho Santa Fe may soon consult a member of his staff on property tax problems in the board room at Association offices adjacent to the golf shop.

McQuilken's representative will be here for two days during either the first or the second week of March. For the exact dates, watch the Association bulletin board at west end of the building housing Cole's furniture store.

Over \$5000 for Charity Use Raised at Garden Club Sale

The Rancho Santa Fe Garden Club has added another success story to the record of its traditional rummage sale.

According to a report by Mrs. Edmond M. Sullivan, general chairman, the two-day sale grossed \$5190. At the same time, Mrs. Sullivan said, costs and overhead were kept so low that the net amount available for club maintenance and charitable purposes was \$5075 before sales tax deductions.

Each year since the annual rummage sale was inaugurated by the Garden Club some 10 years ago, the amount raised for community welfare projects has grown, according to Mrs. Harry W. Booth, Jr., club president.

Costs Low

Equally significant, she added, is the small percentage of the money raised each year required to pay costs of putting each rummage sale on. This produces the "high net," or amount available for the club's purposes, she pointed out.

Ten per cent of the sum raised this year has been earmarked by the club's board of directors for the charitable program of the Country Friends. Another 10 per cent will go to the Rancho Santa Fe volunteer fire department for its building program. This involves construction of an addition to accommodate civic activities.

2500 Attend

Mrs. Hans Amtmann, vice chairman of the sale, estimates that some 2500 persons passed through the Garden club's headquarters building during the two-day sale. They came from points throughout the surrounding area and from as far away as Tijuana to the south and Banning to the north.

Mrs. Sullivan and Mrs. Booth attributed the success of the sale in large part to the fact that rummage was collected and sorted throughout the year by Mrs. Amtmann. She also served as the committee's invaluable vice chairman during the actual sale.

The jam was heaviest right after the doors opened at 10 a.m. on the first day, Feb. 11. Members of the men's committee, wearing "police" badges, were kept busy at the doors and maintaining circulation. William Weddell was chairman.

Members of the checkers and cashiers committee, headed by Mrs. W. C. Jones and Mrs. H. W. Booth, Jr., received money and made change at rapid pace. Sixteen persons handled this

function.

Women Serve Each Year

Among them were four women who have served in similar capacity in each of the club's rummage sales since their beginning over 10 years ago. They are Mrs. R. E. Badger, Mrs. D. M. Bakewell, Mrs. R. M. Clotfelter and Mrs. Alfred D. Hill.

Committee chairmen who headed up the various sale departments and supporting functions were listed in last month's issue of the Bulletin. All deserve a hearty vote of thanks from the Club and the community, Mrs. Sullivan emphasized.

Well over 100 persons worked long and hard under these chairmen to make the sale a success. Although their names are too numerous to list, Mrs. Sullivan again stressed the community's appreciation of their efforts.

Thanks were added as well to the many club members who donated so generously from their homes and wardrobes.



BUSY CASHIERS — Mrs. Edmond M. Sullivan, rummage sale chairman, left, checks with Mrs. Fred Ashley and Mrs. F. B. Van Sicklen of the cashiers committee, as the money rolls in.



SOME JAM! — This is a section of the crowd which jammed into the Garden Club building on opening day of the annual rummage sale.

OLA JOHNSON ... LANDSCAPE SERVICE and GARDEN SHOP

YOUR Garden

is our Business!

Your headquarters for landscaping supplies and service
CREATIVE AND PRACTICAL DESIGNING

Drainage Problems ... engineered by experts
Licensed Contractor ... for your protection

Sprinkler Systems
... simple, practical layouts
installed to insure full coverage

We install Rock Gardens, Patios, Walks and Pools that are in keeping with Rancho Santa Fe tradition

Rancho Santa Fe • In the Village Center on La Granada • PL 6-1427

Home Nursing Class Starts; Sponsored by RSF Red Cross

A course in home nursing got under way last week at the Garden club building. It will meet for two hours each Thursday evening through May 3 under sponsorship of the Rancho Santa Fe branch of the San Diego county chapter of the American Red Cross.

More students can still be accommodated, according to latest report. Anyone interested is urged to call Mrs. Edward D. Havens, chairman, or Mrs. B. F. Jenkins, secretary-treasurer of the Rancho Santa Fe branch. There is no charge.

Mrs. P. A. McDonald is home nursing class instructor.

This is one of six major activities being carried on by the Red Cross branch here. To these should be added the United Fund drive reported elsewhere in this issue which was organized at the local level under Red Cross auspices. Mrs. John C. Rule is vice chairman of the Rancho Santa Fe Red Cross branch.

Appointment of Edward A. Merrill Jr., as Red Cross disas-

ter chairman, announced in the November Bulletin, is another recent milestone of Red Cross work in this community, Mrs. Havens said.

Greatest activity centers around the production department, headed by Mrs. Sidney L. Benedito. Her group of 15 to 20 women meets on the first Wednesday of each month in the Garden Club to carry on its important work.

"Comfort articles" donated for hospital patients are distributed at the U. S. Naval Hospital through the Hospital Council of Southern San Diego County. Mrs. Francis D. Hart is Rancho Santa Fe chairman.

Mrs. Clifford G. Tanner serves as Red Cross home service chairman. She and her volunteers take care of the community's welfare problems and needs. Additional people are always welcome in this department, Mrs. Havens said, particularly if they have had casework experience.

When summer comes, the Red Cross backyard swim program will be in full swing again. Mrs. Alex De Bakcsy heads this activity, so important to the Ranch's younger generation.

Mrs. Havens also serves as secretary of the San Diego County chapter of the American Red Cross. She urges anyone interested in joining one of the Red Cross activities here to call her or Mrs. Rule, or to contact the chairman of the particular activity selected.



UNITED SUCCESS — Mrs. La Motte Cohu, center, reports that the United Fund drive went over the top in Rancho Santa Fe where \$12,423 was raised. With her are Mrs. Edward D. Havens, co-chairman and Red Cross head, and W. A. Smart, Association secretary-manager who also served as Rancho Santa Fe chairman for the United Fund drive.

RSF Does Part to Support First United Fund Campaign

The community of Rancho Santa Fe did its full part in supporting San Diego County's United Fund drive which ended in January.

This opinion was expressed this week by Mrs. La Motte Cohu and Mrs. Edward D. Havens, co-chairmen, in reporting that \$12,423 was raised to go well over Rancho Santa Fe's quota of \$10,400.

They worked as co-chairmen with W. A. Smart, the Association's secretary-manager, using the Association office as drive headquarters.

"We are grateful for the co-operation of the Association, and for Mr. Smart's able leadership," said Mrs. Cohu in announcing that Association facilities will be made available for the United Fund drive next year as well.

Many Volunteers

More than 50 people volunteered their time and effort to make this drive the success that it was, Mrs. Havens added.

The Rancho Santa Fe branch of the Red Cross provided the nucleus and organizational talent for the United Fund drive. The Red Cross is a member organization of San Diego County's new United Fund.

Residences throughout the area were visited, including apartment dwellings. Business establishments were also solicited.

The United Fund idea of "one big drive for one big gift" found genuine acceptance among residents of the Ranch, both report-

ed. It seeks to avoid the duplication and extra burden of many separate drives to meet San Diego County's welfare and health needs.

Business establishments were called on by W. R. Fawcett. Apartment residents were solicited by Col. C. H. Bock.

Loma Verde residences were accounted for by Mrs. D. J. Haflinger and Mrs. Farnum Macurda.

Volunteers for the United Fund in Rancho Santa Fe included the following persons:

Mrs. E. B. Goodrich, Mrs. H. Ray Millard, Mrs. G. S. Currie, Mrs. Cecil G. Gray, Mr. C. Gray Stewart, Rev. Kirk B. O'Ferrall, Mrs. G. E. Schnur, Jr., Mr. Raymond H. Gordon, Mr. E. D. Knudson, Miss Mary Bill, Mr. E. W. Dobroth, Mrs. Hans Amtmann, Mrs. Max Burland, Mrs. D. J. Campbell, Mr. J. H. Reilly, Mr. William Weddell, Mr. W. F. Wheelock.

Mesdames G. C. Mosely, Hubert Brooke, C. S. Ames, Jr., W. C. Jones, Martha C. Twining, K. M. King, A. C. Busche, Jr., G. W. Duncan, William Schofield, John Grimm, Mr. A. D. Hill, Mrs. Alex De Bakcsy, Mrs. M. F. Tackett, Mrs. J. E. Novak, Mrs. C. G. Tanner, Mr. C. W. Haugsten.

Mesdames W. W. Apple, K. S. Walker, J. E. Shaw, H. C. Nigg, C. W. Power, R. R. Pharr, R. B. Fisher, G. D. Clark, Robert Brunson, F. W. Peters, Theodore Finch, A. A. Gregory, C. R. Collins, Mr. R. S. Woolley and Mrs. H. E. Wenz.

VILLAGE FORGE

Leucadia

• Curtain-type fireplace screens made to order:

Any size, any shape
In 13 decorator colors

• Name signs to order

1646 N. Hiway 101 PL 3-1641

Thirty-Third Week

NOR SAN PLAYERS
OL' OPRY HOUSE
AT MEADOWLARK RANCH
OLD TIME MELODRAMAS \$1.00
OLIO ACTS • BEER & PRETZELS • EVERY FRI & SAT, 8:30 P.M. ADM. 1.00

ON RANCHO SANTA FE ROAD ...
4 Miles South of Highway 78

MEADOWLARK RANCH CLUB

Cocktail Lounge

Restaurant

SUNDAY ... Brunch 11 to 2

TUESDAY thru SATURDAY

Luncheon 12 to 2

Dinner 5 to 8

6 miles north
on Rancho Santa Fe Rd.
(toward Vista)

For reservations
phone SHERwood 5-6603



RANCHO SANTA FE CONTESTANTS — Watching Marty Resnick warm up are, from left, David Stockton, John MacFall, Wayne Hartman, Harvey Walseth and George Walseth.

RSF Hosts North SD County Junior Golf Championship

Today's younger generation really has what it takes.

This was the inevitable conclusion reached by old-time golfers at the Ranch who watched the players teeing off for the North San Diego County Junior Golf Championship tournament Feb. 11.

This annual medal-play tournament brought out 85 crack teenage players from points all over the county, including San Diego and La Jolla. Tees were set up for the short course, but conditions were otherwise standard for tournament competition.

Overall winner among the boys was Mark Gordon of Mission Valley Country club. He grossed a neat 2-under-par 70 — good going by anybody's standards.

Top award in the girls' competition went to Marilyn Miller of La Jolla, who scored 86 for the 18 holes playing off the same tees as the boys.

Mark Gordon had a 33 going out and a 37 on the back nine for the overall winning score of 70. Marilyn won the overall girl's award with a 43 on each nine for her 86 total.

In the boys' 15 to 17 year-old class, awards were made as follows: Dave Cotton 35-36 for a 71, winning first place. Mike Rombold won a "sudden death" playoff for second place after scor-

ing a 34-38 for 72. Hugh Skinner scored a 37-35 for the other 72, giving him third honors.

Augie Silverya won another playoff for fourth place after scoring a 37-39 for 76. His opponent was Chuck Courtney with two 38's to make up his 76, giving him fifth place.

Among the boys aged 13 to 14, results were as follows: Mike Riley won another playoff with a decisive birdie on the 4th hole, following his 41-38 for a 79. His opponent was David Aiken with a 40-39 for 79, earning second honors. Paul Tuttle came in third with a 41-38 for another 79. John Einhorn was fourth with a 41-40 for 81. Kenneth McGee earned fifth with his 40-44 for 84.

First prize among the girls aged 15 to 17 went to Marcia Miller with a 44-50 for 94. Donna Dillion won second honors with 101 composed of a 53 and a 48.

Mrs. Robert H. Anderson managed things at the first tee, serving as assistant to the executive secretary of the San Diego Golf association, Mrs. A. S. Smith of San Diego.

The cups were presented by Wade Ambrose of San Diego, vice president of the Del Mar Turf club, sponsors of the tournament as well as of Boys, Incorporated. The tournament was conducted by the San Diego County Junior Golf association.



INTERESTED SPECTATORS — Ward A. Miller, Association president, chats with Mrs. Robert A. Anderson who had charge of starting off the junior threesomes at the first tee.

Willis M. ALLEN Company

Since 1914

REAL ESTATE — INSURANCE
and
ALLEN MORTGAGE CO.

Long term life insurance loans
Serving San Diego County

La Jolla Rancho Santa Fe
GL 4-0721 PL 6-1544

Resident representatives:

Mrs. Louise MacFall

Mr. David Hire

LANDSCAPING

from design to completion

STATE LICENSED CONTRACTORS

TOP QUALITY
BARE ROOT ROSES

BARE ROOT
FRUIT & SHADE TREES

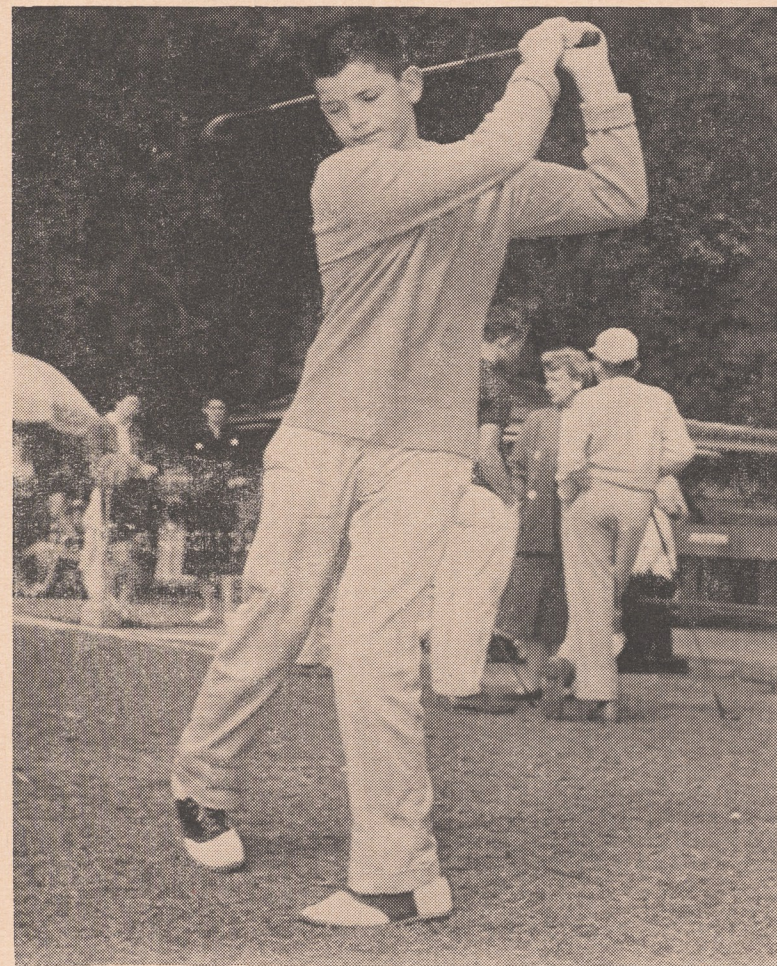
WILLIAMS & MACPHERSON

SUBTROPICAL NURSERY

955 Highway 101

Encinitas, Calif.

PL 3-4555



GOOD TEE SHOT — John MacFall gets off his first drive.



WARM-UP Harvey Walseth practices his swing while waiting.



NINTH GREEN — Finishing the front nine are Doug Noble and Jim Rheim. Contestants came from clubs all throughout the county.



THAT'S HOW MILK SHOULD TASTE!

Qualitee is San Diego County's own BONUS milk. It tastes so fresh because it IS!

At your neighborhood food market, or from your Qualitee milkman . . . it's always the same fine quality, always has the same FRESH taste.

Qualitee
DAIRY PRODUCTS ASSOCIATION

11th Avenue at J — San Diego 1
BEImont 3-7144
Sherwood 5-2524 • SARatoga 2-6361

BRUCE K. LAND • SEPTIC TANKS
• CESSPOOLS
• DRAIN LINES

COMPLETE INSTALLATION & SERVICE

LICENSED
PLateau 3-1141

INSURED
1475 Neptune Avenue
Leucadia

Residences
Building Sites
Investment Properties

In Rancho Santa Fe
And Adjoining Areas

NELSON and CHAPIN

Montgomery L. Hart, Associate
PASEO DELICIAS
Phone PL 6-1121

Country Friends to Sponsor Polo Tourney May 10 and 11

The Country Friends' second annual invitational polo tournament will be held at the Rancho Santa Fe polo grounds May 10 and 11, according to announcement by Mrs. Walter Wencke, chairman.

Famed Tommy Hitchcock and his San Francisco polo group will be among the teams competing in this year's tournament, according to plans being firm up by Mrs. R. G. Medlicott, co-chairman for the event. The Palm Springs Red Diamonds and a team from Long Beach are expected.

In the opinion of Eddie Read of the Del Mar Turf club, the Rancho Santa Fe-La Jolla home team will be in good shape for competition by tournament time.

First planning meeting for the chairmen of tournament committees was held on Tuesday at Mrs. Wencke's home. Among

those present were the following: Mrs. Dorothy B. Patton, tickets chairman; Mrs. Thomas P. Faulconer, chairman, and Mrs. Cecil G. Gray, co-chairman of the programs committee.

Mrs. La Motte Cohe is patrons' chairman, Mrs. Edmond M. Sullivan heads publicity, Mrs. Vernon M. Burns has charge of posters.

Mrs. Van A. Goodrich of Del Mar heads the program signatures committee, and Mrs. L. W. Vidler of San Marcos the paid advertisements committee.

Regional directors for the tournament are Mrs. C. J. Wittmer (San Diego), Mrs. Roy Klapper (La Jolla), Mrs. Waldron J. Cheyney (Del Mar-Solana Beach), Mrs. William De Haan (Encinitas - Leucadia), Mrs. Ralph W. Dusenbury (Carlsbad-Oceanside), Mrs. Henry C. Riddle (Vista - Fallbrook) and Mrs. Charles R. Considine (Escondido-Valley Center).

Proceeds of the tournament will be divided among agencies on the Country Friends list of twelve. Its scope is county wide.

Other committee assignments announced by Mrs. Wencke are the following:

Mrs. Elliott C. McIntire, prizes; Mrs. Roy Klapper of La Jolla, advisor; Mr. and Mrs. William O. Fleetwood, food and beverage; Mr. R. C. Blackledge, parking and post games; Mr. and Mrs. Lester Walls, pre-game arrangements.

Mrs. Edward D. Havens serves as recording secretary; Mrs. A. C. Ridland as courtesy secretary. Mr. and Mrs. Edward J. Lefevre have charge of program sales, Mr. and Mrs. William J. Herbert of ushers.

Mr. and Mrs. James L. Smith of Del Mar are responsible for ticket takers, Mr. and Mrs. Clifton W. Power for entertainment, and Mr. and Mrs. Robert C. Gordon for the PA system.

Vice President at Opening



Dr. Neil J. Randol, vice president of the Rancho Santa Fe Association, second from right, attends opening of the new Solana Beach branch of the Bank of America. With him are bank and chamber of commerce officials.

Horse Show, Meeting Launch New Season for Riding Club

The Rancho Santa Fe Riding club has launched an active 1958 season with its annual membership meeting in January and the Junior Riders' first horse show of the year on February 9.

Reelected at the meeting were Emmett J. Manion Jr., president, and Russell Q. Fellows, treasurer.

Cmdr. Alfred A. Gregory was elected vice president of the club, and Mrs. Warren R. Devine secretary.

Others elected to the board of directors are Arthur J. Banker, Mrs. Paul Dobson, Mrs. Edward D. Havens, Grove C. Mosley, John W. Rice, Jr., and John S. Robertson.

The Junior Riders' February horse show was this area's first "point" show of the season. These are the shows in which contestants are rated by California's professional horse trainers. Awards are made for ex-

cellence throughout the season. Other "point" shows take place at Indio (first for the entire region), at Del Mar, San Francisco, Los Angeles, Sacramento, etc.

Miss Penny Brooke is president of the Rancho Santa Fe club's Junior Riders.

Persons named at the annual meeting to the club's building and grounds committee are Grove Mosley, chairman, Russell Fellows, Ben Fletcher, Cecil Gray and Ron Riley.

Named to the trails committee were Bill Herbert, chairman; Marjorie Bowles, Charles Chapin and Russell Fellows.

The grievance committee consists of John Robertson, chairman, and John Rice.

Plans are being made by the club's directors to retire present obligations and to expand club facilities by constructing a new stable.

Subcommittee Reports Heard

(Continued From Page Three)

by Neil Randol, liaison director, in presenting their committee report.

A 12-acre plot will be earmarked and set aside by the Santa Fe Irrigation district for construction of another school, they said. Cost of this land will be held at a low and fair level to protect Rancho Santa Fe taxpayers and the school district.

Plans are to be made at once to finance this purchase either by special arrangement with the Irrigation district or possibly through a bond issue or a school tax rate increase. Cost of the land acquired in this manner would be about 50 per cent less than by open bidding or public purchase, they added.

To provide for immediate needs in the face of increased school attendance, however, the addition of five new classrooms and the development of more playground area were also discussed. This will be required to maintain the optimum average of 25 students per class room session, according to the report.

Also involved in the playground development would be attractive landscaping through cooperation between the school board, the PTA, the Garden club and both the Rancho Santa Fe Association and San Diego county maintenance forces, they said.

Report of the Highways subcommittee was given by Raymond Gordon, chairman. He emphasized the paramount importance of dissuading county planners from ever routing a main highway through the Rancho Santa Fe area.

The Highways committee is working constantly to secure this objective, Gordon said. Efforts are being made to support adoption of such alternate routes as a San Marcos road from Escondido and a connecting road through the Poway Valley to eliminate need for any similar route through the Ranch, he said.

Fire and Police Departments Report of the Administration subcommittee (including Fire and Police Departments) was made by Emory Peterson, chairman.

This committee is studying the ambiguities which exist between boundaries of Police and Fire department jurisdiction and those of Rancho Santa Fe itself. Recommendations for any action decided upon will be made in conjunction with the public meeting on the third Mangore Report on Government, Peterson said.

In reporting for the Business District subcommittee, Chair-

A Real Buy

Charming 2-year old ranch home on 2½ acres with 3 bedrooms and 3 tiled baths. There is a pleasant living room with a used brick fireplace, parquet floors, pine panelling, large family room with outside entrance, conveniently arranged kitchen with built-in G. E. range, oven, dishwasher and disposal. Brick terrace and barbeque plus a double garage. Many fruit and nut trees. \$16,000 first TD, possible small second. \$35,000 full price.

Willis M. Allen Co.
Rancho Santa Fe
PL 6-1544

MERLE NORMAN COSMETICS
"Personalized Service"
119 N. Acacia • SK 5-1695

• Antiques
• Gifts • Curios
TRASH 'N TREASURE SHOP
386 N. Hiway 101 Leucadia

Drop in & See us
"Just Off the Square"
COUNTRY FRIENDS

Sending Flowers? Wire 'em
FRANAUD FLOWERS
PL 3-2554 628 1st St. Enc

ENCINITAS APPLIANCE
G E and Frigidaire
620 2nd St. PL 3-1626

Hanlon's Ambulance Service
24 hour service
1105 Hy 101 Del Mar SK 5-1378

PLANNING A PARTY?
Then plan on having it at the
WISHING WELL
We give attention to private
and business parties PL 6-1123

man Bob Francisco said that the most pressing need now is for increased parking facilities. The committee is working on this problem, he said.

Four meetings of the Zoning subcommittee have been held, according to report by Claude A. Welles, chairman. An immediate problem arises out of the contingency of zones in different sized lots. Fair treatment for all property owners should be sought through cooperation between real estate men, health agencies and

THE TRADIN' POST

Rancho Hardware
in the Village Center
HOOVER VACUUM
with automatic shift
PARTS SERVICE
We Give S&H Green Stamps
PL 6-1702

Life Time Fence Co.
Redwood Fences
Steel Fences
Free Estimate—Time Plan
Phone (collect) SH 5-6311
540 W. Grand • Escondido

Gailey's Photo Supply
"Escondido's Most Complete"
230 E. Grand
Phone SH 5-7823 - Escondido

DOUGLAS HANNA
The Linen Shop
WAMSUTTA SHEETS
and TOWELS
1141 Prospect St. • La Jolla

The HOBBYCRAFT Shop
CUSTOM PICTURE FRAMING
Arts & Crafts
Moving to New Location
116 S. Sierra Solana Beach
SK 5-4547

MacPherson's
Men's and Women's
Quality Clothing
515 First Street
PL 3-1953
Encinitas

For any make NEW or good used car, call BILL APPLE, PL 3-1702

A & A MOTORS
#1 USED CARS
204 N. Hwy 101 Encinitas

CULLIGAN Soft Water SERVICE
for BETTER LIVING
111 So. Cedros P. O. Box 278
SOLANA BEACH
Phone SK 5-1022

ENCINITAS LUMBER CO.
Everything and anything for building
745 First St. Encinitas
PL 3-1148

GOODIES GALORE COFFEE SHOP
The only Coffee Shop in Town
588 Hiway 101 Encinitas

ENCINITAS' Leading Jewelers
GLYNN'S—JEWELERS
644 2nd St Encinitas PL 3-4232
4 doors south of post office

Magnificent!

Sunny mountain view, privately secluded between orange groves. Four bedroom home, living room, dining room, den, storage, pine panelling game room and utilities area. Three and a half baths, minimum of property upkeep. Fine for children. Three acres with area for corral and pool. \$25,000 commitment. Price \$49,500.

NELSON CHAPIN REALTORS
PL 6-1121

the various neighborhood groups, he said.

Other Reports Submitted R. E. Badger reported for the Water subcommittee, of which he is chairman, that a complete schedule for guaranteeing 30 pounds of water pressure in all Ranch areas is now ready for the Association's planners.

In a special memorandum, signed by Roy Kirby, chairman, the Parks and Recreation subcommittee reported study topics taken up at its first meeting Jan. 24.

The golf program was reported

as progressing satisfactorily except for the need of improved landscaping on the 17th hole. This is being looked into with the cooperation of the Garden club.

Enlargement of riding trails is contemplated, in addition to proper maintenance of existing ones and improvement of the stable properties, the report stated.

No need was felt for enlargement of tennis facilities on the Ranch. Gardening improvements

(Concluded on Page Twelve)

... YOUR NEAREST FORD DEALER
for Sales and Service
"SATISFACTION GUARANTEED"



PETERSON FORD

IN ENCINITAS
100 North Highway 101 • PLateau 3-1161



For a Royal Treat—Come to
CHESTER NEWMAN
CANDY SHOP
7813 Ivanhoe Ave. - La Jolla
Careful attention to phone orders
GLencourt 4-5150

Church Campaigners Report Progress; Drive Continues

Construction of a new church building in Rancho Santa Fe was assured this week by first returns from a highly successful campaign conducted last Sunday afternoon by workers for the Village Community church.

More than \$112,000 has been subscribed in cash and pledges over a three-year period toward the goal of \$150,000, according to chairman George Ennis.

Concerted efforts will be made in the next several days to complete the canvassing job and attain the full amount necessary.

"We are most happy at the enthusiastic and generous response of church members and friends who have participated in the drive for our building fund," Rev. Chester L. Tolson said. "This success could not have been assured without the untiring efforts of many workers. We offer our sincere thanks to those who have cooperated in every way with this worthy project."

Under the direction of George

Bedell, representative of the Board of National Missions of the Presbyterian church, 36 campaign workers completed 106 calls Sunday in quest of support for the building fund and the church's annual budget. Many more calls are still to be made.

Construction of the new Village church will begin as soon as plans have been approved, according to Robert C. Francisco, chairman of the building committee. Culver Heaton, AIA, winner of two first place national awards for church design, is the architect.

The four-acre site for the church is on Pasea Delicias, the road connecting Rancho Santa Fe with Escondido, and is bounded on the east by La Valle Placeta. Initial construction will consist of a chapel seating approximately 200, five classrooms, a nursery and offices. The master plan calls for a larger church structure and fellowship hall, which will be built in the future as church membership and needs expand.

Chairmen Meet

(Continued From Page Eleven)

are to be coordinated with the Garden club.

The proposal for a community swimming pool is termed controversial by the committee, and views are being examined on all sides before any conclusions are reached.

Considerable work has been done, and some money raised, toward the building of a youth center for use by the Boy Scouts as a meeting place. A complete report on this is to be expected within a month, the report said.

The acquisition of land for parks and playgrounds, including a Little League ball park, is also slated for continued study. Of particular interest, however, is the Osuna House, one of the oldest in all of San Diego county. It was hoped that the Garden club or some similarly civic-minded organization might acquire this historic property and restore it for use as a museum.

BULK RATE
U. S. POSTAGE
PAID
Rancho Santa Fe,
California
Permit No. 15

Traveling Golf Team Scores Tie

The Rancho Santa Fe Golf club's traveling team broke its month-long losing streak Feb. 23 when it tied the Annandale Country club in team matches held at Rancho.

The return match on the Pasadena team's home course March 2 had not taken place when this issue went to press. Members of R. E. Leadon's traveling team were hoping for even better news, however. The score Feb. 23 was 24-24.

Results of the home team's Feb. 23 match with La Jolla Country club were not available at press time. On Feb. 16, however, the team lost to San Diego Country club, having tied up its first match the week before. Jack Berry is home team captain.

The traveling team played a two-week series with Santa Ana Feb. 9 and 16, and lost both matches.



Eight charming cottages offer informal family comfort amid lawns and eucalyptus trees at The Inn.

Your Winter Home away from Home

