

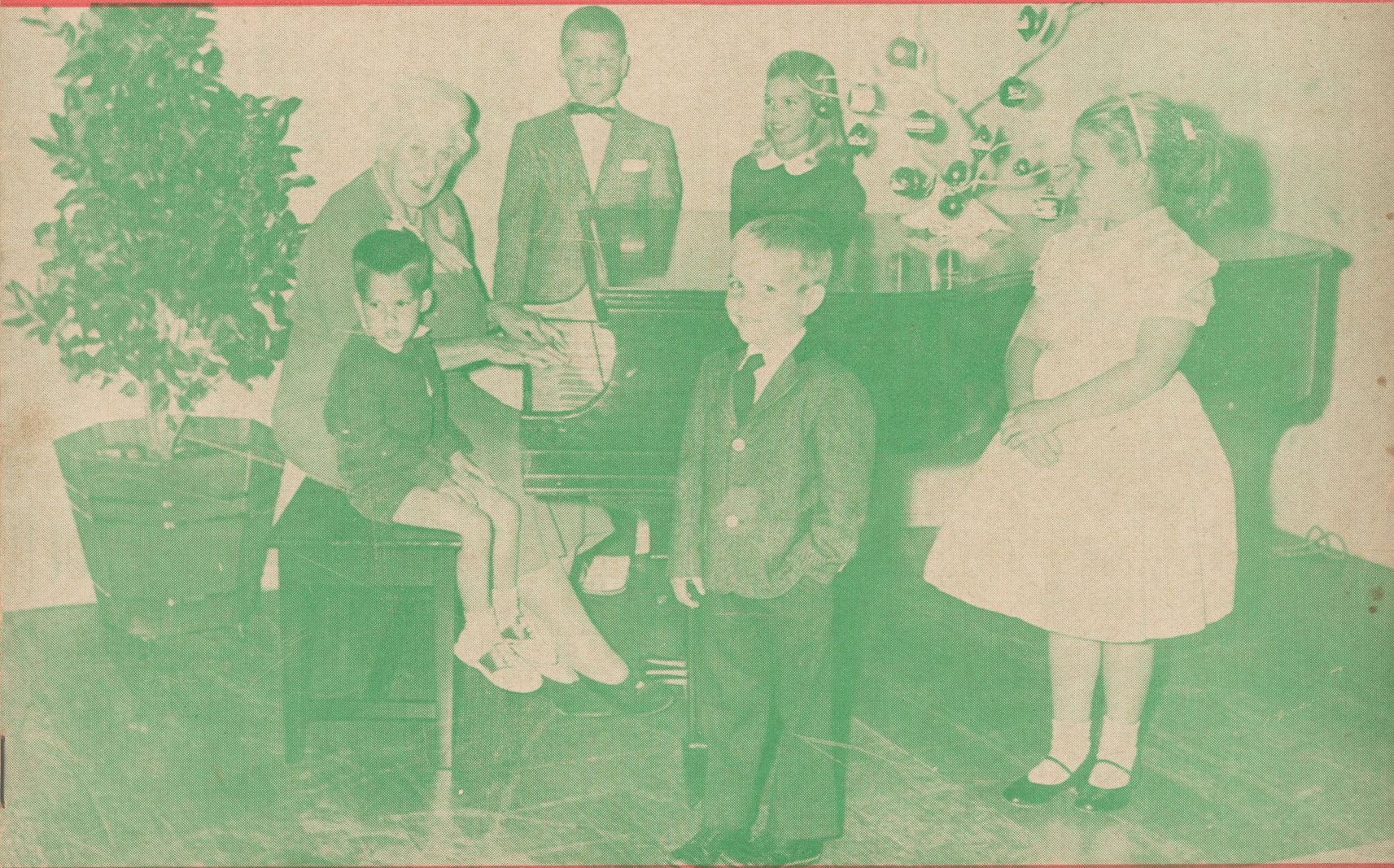
# ASSOCIATION BULLETIN

PUBLISHED BY THE RANCHO SANTA FE ASSOCIATION FOR THE BENEFIT OF ITS MEMBERS

Volume 5, Number 11

Rancho Santa Fe

December, 1958



Christmas caroling will echo from the Garden Club on the evening of December 21 when this group of Ranch youngsters sings under the direction of Mrs. William P. Remington.

## In This Issue

**Board Meetings**

**Art Jury**

**Country Friends**

**Ranch Beautification**

**Fire Department**

**Garden Club**

**School Addition**

**Riding Club**

**Garden Page**

BOARD MEETS NOV. 7, 21

# 'Richardson Foundation' Trust Authorized; Carts Regulated

The Board of Directors at its meeting of November 7 voted unanimously to authorize a declaration of trust establishing the George Richardson Foundation.

The Association also authorized President Booth to execute a contract with Builder Herbert Armstrong for construction of the proposed maintenance building on the golf course.

Sponsorship of an annual Rancho Santa Fe junior golf tournament for the Whittaker Memorial Trophy was voted subject to the approval of Mrs. Whittaker. This was reported at the board's second meeting.

### Tax Exemption Reaffirmed

Attorney Clayton reported receipt of a letter from the director of internal revenue affirming the Association's tax exemption, and recommended the following resolution, which was made, seconded and carried:

"That all special privileges heretofore granted to any member of the Association be eliminated, and the secretary of the Association be instructed to take whatever steps necessary to carry this into effect."

Also carried were the following resolutions:

Authorizing Association officers to sign a lease between the Association and the San Diego department of public works, maintenance division, covering rental of a part of the Association's new maintenance building.

Asking Southland Lift Trucks, Inc. to reduce electric cart rental rates to patrons of the golf course to \$3.50 each for 9 holes

of golf after 3 p.m. in winter months and after 4 p.m., day-light-saving time.

To purchase a two-way communication set for Sheriff Charles' car at an estimated cost of \$641.75.

The following applications were approved:

Robert C. Francisco to change the land contours of his property on La Gracia and Via de Santa Fe, conditional upon the fact that dirt be pushed around and leveled at the discretion of the Association manager.

San Diego Gas & Electric Company for a power easement over Association property.

Alice Ewing for subdivision of property.

Five applications for subdivision or lot realignment were referred to the Art Jury for processing in the regular manner.

### Financial Report

Secretary-Manager Smart reported gross revenue for the month of October, 1958, as follows:

Green fees: cash \$5,093.00 playing privileges \$2,976.00, total \$8,069.00.

Golf shop: carts \$1,892.50; cleaning and storage \$296.50, lockers \$154.50, merchandise \$2,389.37, total \$4,732.87.

Restaurant and bar, \$6,143.56. Grand total: \$18,945.43.

At the second meeting, reduction of electric cart rates was given final approval. It was further moved, seconded and passed that privately-owned electric carts be registered and that fees applicable to them be raised to \$2 for 18 holes and \$1 for nine. The new rates are to be effective from December 1, 1958.

An Association membership at \$25 in the San Diego Highway Development Association, Inc., was authorized.

### Approvals Given

Applications for lot realignment by Mrs. K. S. Warren and Lucia D. Taylor were approved at the second meeting of the board. Property involved lies respectively in the map 2089 area and on Camino del Norte.

Easement agreements with the county of San Diego covering the installation of a new sewer line between the property



WOW!—These are some of the scary characters seen running about the school grounds at Rancho Santa Fe's very successful Halloween Carnival.

of Messrs. Cheyney, Bertch, Lindburg, Meyer and Peterson were approved.

The subdivision application of Mrs. Josephine Tucker, covering property at La Valle Plateada and El Vuelo, was approved.

### Denied or Deferred

The application for lot realignment by Haskell Strawn, covering property in the map 2089 area, was denied.

Action was deferred on the subdivision application of Allen R. Faust, on the application for "keeping of animals" by Harry J. Lee, and on the subdivision application of Robert Keith.

Golf-course operation was dis-

cussed by the board at length, and Director F. H. Frazer was asked to call a meeting of the golf course committee and report its recommendations at the next board meeting.

At the board's second meeting, it was moved, seconded and unanimously carried that the by-laws of the Association be amended to conform with the "organizational chart adopted this date."

It was also moved, seconded and unanimously carried that committee members shown on the "organization chart" be appointed, subject to their acceptance.

the

## Fireside

Restaurant and  
Cocktail Lounge



A noted landmark for fine American fare, served in an atmosphere of quiet charm! Luncheon, cocktails and dinner... complete banquet facilities. Member of Diners and Esquire Clubs. Al Lawrey at the Wurlitzer.

Highway 395 at W. Washington  
ESCONDIDO

Information Bulletin  
of the  
Rancho Santa Fe Association  
Rancho Santa Fe, California

Board of Directors — Harry W. Booth Jr., president; William Weddell, vice president; J. Widman Bertch, David B. Dewey Jr., Edwin H. Frazer, Dr. Neil J. Randol, Stanford Tompkins; W. A. Smart, Secretary-Manager; Thomas B. Robertson, Editor.

# Country Friends Sponsor Rare Jewelry Show Dec. 8-10

A yellow sapphire, a large pink pearl, a 145-grain Oriental pearl and a 35-carat ruby are among the unusual gems to be shown in the jewel display sponsored by the Country Friends at their Trader Shop in the village center on December 8, 9 and 10.

Proceeds from sales will be divided among the twelve agencies now receiving support from Country Friends, according to Mrs. Dorothy B. Patton, president.

The collection, brought to America by the firm of Joseph Weisager & Fils of Paris, will be displayed in only five cities in this country. George Weisager, youngest generation represented in the firm, is escorting the show. With his American-born wife, he will be entertained by friends in this area during their stay.

Winner of many international prizes in jewelry design, Weisager selects his own stones, supervises their cutting and devises the designs. Thirty-two craftsmen, all elderly, do the actual work. The firm has created designs for Queen Elizabeth and other royal patrons, and is a wholesale supplier to Tiffany's in New York.

Of his work in diamonds, Mr. Weisager is quoted as saying: "I use diamonds as a dressmaker uses material. Everything is fluid; nothing looks stiff."

Among the items on sale will be:

The "ballerina skirt," used for

(Continued on page eight)

## Individual Gifts To Gladden Yule For C. F. Charities

Personal gifts for each recipient among the 12 charities aided by Country Friends have been purchased from Trader Shop funds and fashion-show receipts, and are now being wrapped and made ready for distribution by members of the board of directors.

Much time and effort have been spent ascertaining the needs of each child or older person affected in the following agencies:

Boys and Girls Aid Society, Neighborhood House, Child Development Center for Retarded Children in Mission Valley, Guadalupe Clinic, the Sheltered Workshop, Salvation Army Door of Hope, San Diego Children's Home, Social Service League of La Jolla, La Jolla Visiting Nurses Association, Palomar Family Service, San Diego Hearing Society, and the Chula Vista School for Cerebral Palsy.

## Blasting Caps Called Dangerous; Care Urged

The very grave danger of boys and girls playing with blasting caps was cited today by Fire Chief Jim Fox in a warning to parents, children and others.

Dangerous caps were found in Spooks Canyon by a group of Boy Scouts during October, Chief Fox said.

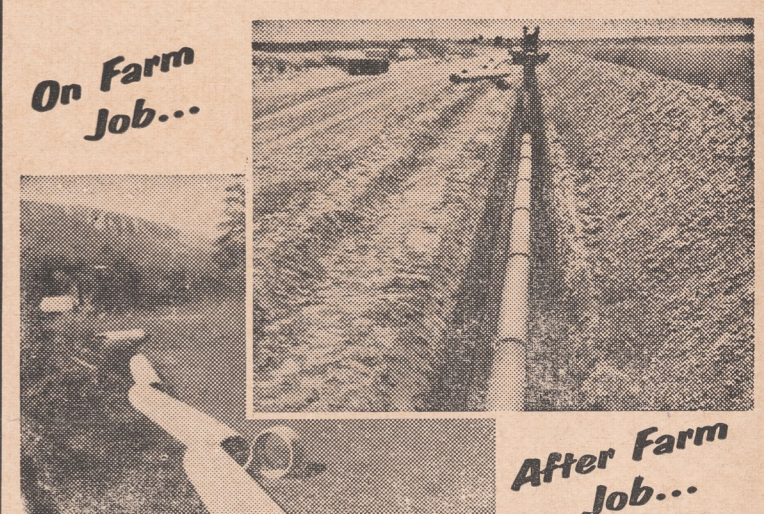
"Blasting caps are filled with a powerful explosive which can wound or blind the unwary. Every year many suffer serious and painful injuries from these detonators."

These caps, needed to detonate dynamite, are short, shiny metal cylinders, about as big around as a lead pencil and from one to five inches long. The tube is made of bright aluminum or cop-

(Continued on page 10)



CHRISTMAS GIVING—Board members of the Country Friends gather at the Trader Shop to inspect some of the individual Christmas gifts which will be given this year to recipients among the 12 charities aided by County Friends. From the left are Mrs. Harry E. Wenz, Mrs. Charles W. Haugsien, Mrs. C. K. Whittaker, and Mrs. La Motte Cohu.



## Transite Irrigation Pipe protects against shutdowns

FARMERS EVERYWHERE have found using Transite Irrigation Pipe to be the sure way to avoid irrigation shutdowns, prevent water loss and cut pumping costs. Whether used for sprinkler or surface systems, Transite provides long, trouble-free service.

Made of asbestos and cement, Transite is strong and durable. When used underground in sprinkler systems, its resistance to corrosion both inside and out assures long service life, constant rated pressures.

Internal deposits due to tuberculation will not build up, thus fuel and power wastage caused by overworked pumps is avoided.

Transite will save vital water, reduce operating costs in surface systems for tail water pump-back, too. Specially designed couplings assure positive joint seal yet give line flexibility. These joints stay tight, are not affected by wetting or drying out between applications.

**Johns-Manville TRANSITE IRRIGATION PIPE**  
AN ASBESTOS-CEMENT PRODUCT

## WEBB BROS.

DISTRIBUTORS

252 W. Grand Ave. • Escondido, California

# PAUL T. GALLEHER

REALTOR

## Country Squire Courtyard

Rancho Santa Fe

HARLEY E. ANDRE — ASSOCIATE

PL 6-1180



**CHALLENGE**—This is one of a group of photographs selected by the Garden Club's Ranch beautification committee to illustrate problems to be solved in the months ahead. Here, the roadside approaches to the Ranch and outlying areas are suggested for study and possible beautification.

### Vote Statistics Show Ranch Staunchly GOP

Had Rancho Santa Fe voters set the pattern for the country, things might be quite different in Washington and Sacramento during the next two years.

Figures compiled for the four Aliso precincts on the Ranch show a preponderance of sentiment in favor of William Knowland and Goodwin Knight.

Similarly, Candidates Utt and Kraft enjoyed a very strong vote on the Ranch. William Shearer showed up strongly against his victorious opponent Sheridan Hegland.

Among the controversial propositions, Ranch voters registered a strong "no" to propositions 16 and 17, but an equally resounding "yes" to victorious 18.

### Christmas Theme Of Garden Club's December Events

Christmas provides the focus around which Garden Club events are planned for the month of December.

On December 9 at 12:30 p.m. a luncheon will be held at the Garden Club followed by a Christmas home decorations demonstration by Mrs. Merrill Grow.

The morning of December 17, starting at 10 a.m., will be a time for making wreaths and other Christmas decorations at the Garden Club for the U. S. Naval Hospital. The theme of this traditional event is "Christmas for Others."

On December 21 at 7:30 p.m. Christmas carols will be sung at the Garden Club by a group of children under the leadership of Mrs. William P. Remington.

## Seek New Municipal District To North and East of SFID

Efforts are being made to form a new Olivenhain water district to the north and east of the Santa Fe district. Annexation to the San Diego County Water Authority has been requested.

If agreed to, this will become a large Municipal water district, according to D. M. Bakewell, manager of the Santa Fe district.

Boundaries between the two as now laid out are irregular in

many places, and the district board is studying the desirability of possible revisions.

An annexation to the Santa Fe district was requested by H. M. O'Rand of Rancho Santa Fe to permit the construction of a shopping center on the northwest corner of Stevens avenue and Border road opposite the county fairgrounds.

The Santa Fe district is about to announce for bids on 3500 feet of 20-inch pipe to be laid along Linea del Cielo. This will be the first link of a new trunk line to Solana Beach, Mr. Bakewell said.

## Beautification Objectives Being Pursued by G. C.

The Garden Club's Beautification group continues to make progress toward solution of the 11 problems outlined at the last beautification meeting, held October 14.

These "targets" for the months to come are the following:

- (1) Civic Center planting.
- (2) Park areas.
- (3) Turn-arounds.
- (4) Highways and roadsides.
- (5) Riding trails.
- (6) Utility and public service areas.
- (7) Approaches to the Ranch and outlying areas.
- (8) Continuing clean-up campaign.
- (9) Living memorials.
- (10) Lathe house.
- (11) Public information and junior educational programs.

A NEW AND BETTER WAY OF PACKING YOUR GOODS!



# MAYFLOWER "PRIDE PACK"

- GREATER PROTECTION!
- CLEANER — FASTER SERVICE!
- MORE ECONOMICAL — SAFER!

## COLE MAYFLOWER

Cole La Jolla Truck & Storage Co.  
7851 Herschel GL 4-0444

FOR INFORMATION OR SERVICE  
PLEASE CALL COLLECT

Rancho Santa Fe  
Country Homes and Homesites

## R. M. CLOTFELTER

Licensed Real Estate Broker

Since 1931

PLaza 6-1422

Paseo Delicias

# Caroling Will Accompany Tree-Lighting Dec. 18

Rancho Santa Fe's traditional tree-lighting ceremony will usher in the 1958 Christmas season Thursday evening, December 18.

Streets in the village area will be roped off and caroling will begin at 7:30 p.m. The senior choir of the Village church will join with junior and senior high school youth group choirs in accompanying the traditional ceremony performed by grade-school youngsters.

Each grade-school class will also sing one Christmas carol during the program, according to Rev. Chester L. Tolson who will direct the singing.

Mrs. W. R. Fawcett heads the committee which will put on this happy event. She is assisted by Mrs. Ronald A. Lange, secretary of the Rancho Santa Fe PTA, and by Mrs. Lee R. Taylor. Lambert Baker, school principal, and Rev. Tolson are also assisting.

Every child on the Ranch is cordially invited to attend the tree-lighting festivity — and to bring his parents. Last year, several families held open-house gatherings after the ceremony, and these added greatly to the gaiety of the occasion, Mrs. Fawcett said.



**LAMP LIGHTERS**—This is the group which is preparing for Rancho Santa Fe's traditional Christmas tree lighting ceremony on December 18. Watching as Mrs. W. R. Fawcett instructs the youngsters are, from left, Rev. Chester L. Tolson, Mrs. Ronald A. Lange, Mrs. Lee R. Taylor and School Principal Lambert Baker. Lamp lighters, from left, are Kathleen Tolson, Randy Apple, Timmy Reed, Nancy Scarr, Joannie Newman, Scott Taylor and Janet Taylor.

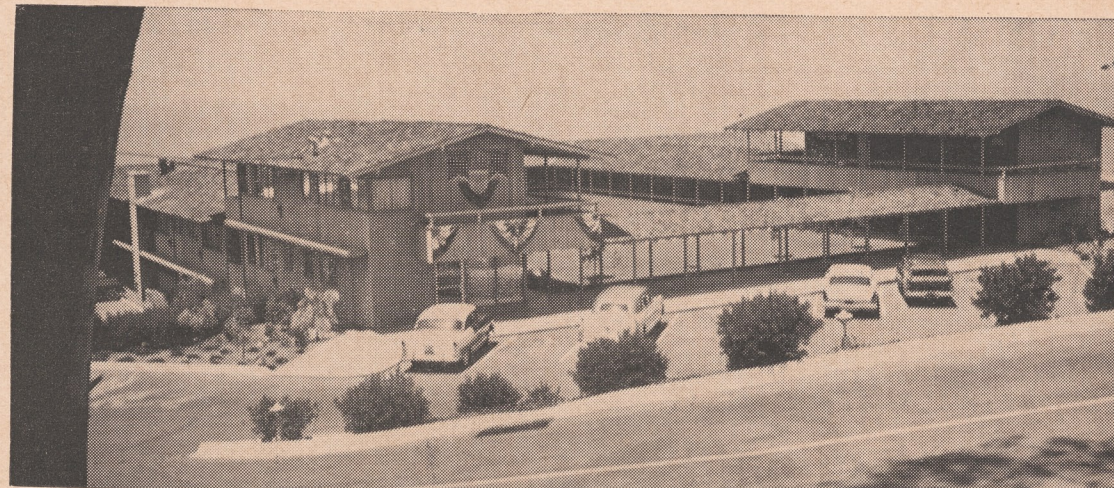
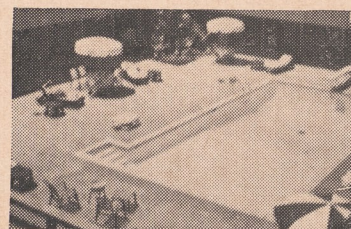
Order Early  
for flower deliveries  
and save the cost  
of telegraphing



### FRANAUD FLOWERS

628 First St. PL 3-2554  
ENCINITAS

## The Motor Hotel with Hospitality



- Heated pool in bricked patio
- TV & phone in each room
- Spacious ocean-view units
- Continental breakfast
- Lunchtime snack bar
- Tigosta Room for cocktails

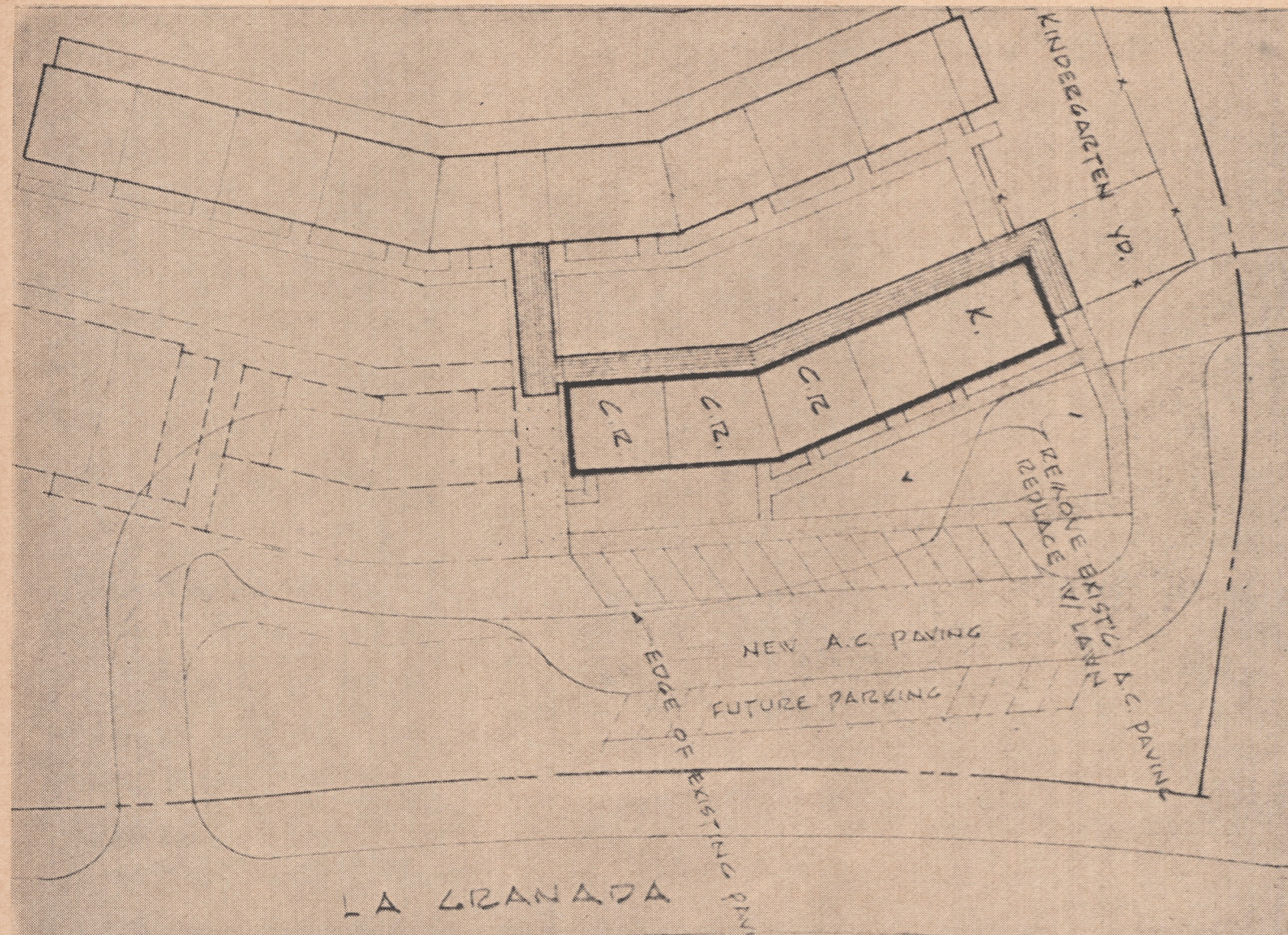
DEL MAR'S NEWEST, MOST EXCLUSIVE APARTMENT HOTEL

# Namara Inn

PHONE SK 5-1501

DEL MAR, CALIF

Mr. and Mrs. Clifford J. McNamara  
owners



PLOT PLAN—This tentative plot plan shows location of the proposed addition to Rancho Santa Fe's elementary school.

Parking area arrangement is still under study. A bond issue to raise \$98,000 for the new addition will be voted January 27.

**For Christmas** • Decorations  
 • Hallmark Cards  
 • Gift Items

SH 5-5841

**STATIONERS SUPPLY** 129-31 E. Grand Escondido

**Right on Your Way to San Diego . . .**

• Easy Pick-up • Low Cash & Carry Pices

**DEL MAR CLEANERS**  
 The Post Office is next to us

**MOST CONVENIENT . . .**  
 . . . TO THE RANCH

Large Assortment of Imported Wines & Liquors

*Del Mar Liquor Store*

1446 Highway 101 SK 5-1733

Residences  
 Building Sites  
 Investment Properties

In Rancho Santa Fe  
 And Adjoining Areas

**NELSON and CHAPIN**  
 Montgomery L. Hart, Associate  
 PASEO DELICIAS

**SCHOOL BOARD APPROVES**  
**New Classrooms to be Voted**  
**At Special Election Jan. 27**

Ranch youngsters will have three new classrooms and a new kindergarten when school re-opens next fall — provided that voters of the district approve the \$98,000 bond issue which comes up at a special election on January 27.

At a special November 14 meeting, the Rancho Santa Fe school board approved the bond issue for construction of these new facilities to bring the Rancho Santa Fe school up to the standard felt to be essential for the district.

**For Individual Education**

It is in line with board policy to maintain a proper ratio between student enrollment and class room facilities, so that an individual program of education can be fostered.

"There is no room for mass education within the boundaries of this district," said School Board Chairman Hubert Brooke.

Preliminary drawings have been made by Paderewski, Mitchell and Deane, San Diego architects, for a new structure to the east of the existing school building.

Prints are available for inspection by any interested person upon request to Lambert Baker, school principal.

At present, the Ranch school does not have a room adequate for kindergarten use, Baker said. The diversity of activity which must be carried on in kindergarten-level instruction requires a room half-again as large as the one now is use.

**Newest Design**

The kindergarten room planned in the new wing will be modelled after one recently completed in the Pomerado school, Poway Valley. It will take full advantage of all improvements, and will have special equipment scaled to the young child's needs. An important feature will be proper facilities for clay handling and drying, Baker said.

"And these things cost no more if they are designed into the room ahead of time," he added. Both the architects and school

district officials are also working hard on the parking area situation, Baker continued. The print which appears with this article does not show a final solution to this phase of the problem.

Five out of the school's present seven classrooms now house a larger number of students than is compatible with school board policy, Baker added. The additional classrooms will remedy this situation as well as provide an adequate kindergarten room.

**'Man's Dilemma'**  
**To Be Discussed**

"Man's Dilemma and the Christian Answer" will be the subject of four classes to be held at 11:15 each Sunday morning, through December 21 at the Village Church.

The classes, to follow directly after the 10 o'clock worship service, will be conducted by Rt. Rev. William P. Remington of Rancho Santa Fe, retired bishop of the Episcopal church. They are open to all men and women in the community.

This series is sponsored by the newly-organized Men's Council, of which Paul Dobson is president and Kenneth E. Knudson is chairman of the study committee.

**Village Church**  
**Plans Christmas**  
**Service & Carols**

The Christmas service of the Village Church will be held on Sunday, December 21, at 10 a.m., according to Rev. Chester L. Tolson, pastor.

Young people of the church will also go caroling that evening.

Church choirs, augmented by grade-school children, will provide background music for the village tree-lighting ceremony on December 18.

The church has just completed the annual pledge campaign for its 1959 operating budget. Mr. La Motte Cohe, chairman, Dr. Herbert Willy Meyer and Carl M. Meunch, team captains, announce over \$20,000 pledged, with some yet to be secured.

The building committee reports that architectural work on the new church is complete, engineering is in progress, and bids for construction will be called for soon. The sum of \$150,000 has been pledged to the building fund at latest reports.

*John F. Gill*  
 Jeweler and Watchmaker  
**1200 Prospect at Ivanhoe**  
 (Half-block North of La Valencia Hotel)  
 La Jolla GL 4-3285  
 Our 9th Year in La Jolla

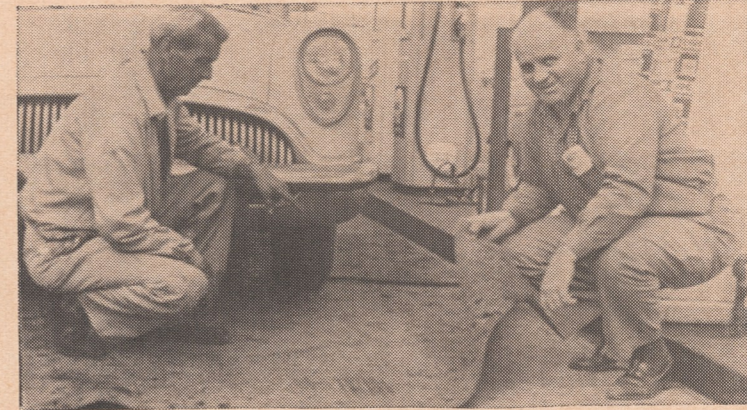
**CHURCHILL & CASSOU HARDWARE**

• Dutch Boy Paints • Frigidaire Appliances

140 E. Grand ESCONDIDO SH 5-2441

Where Quality Tells and Service Sells

**'Torture Test' Proves 100% Nylon Durable**



Inspecting the "Torture Test" at Ed Digby's Shell Station. Solana Beach, are Digby and Lee Reynolds of Magic Carpet.

**Slippers**  
 for the Family

• Christmas Ideas • Shoe Valets  
 • Gift Certificates • Belts, Socks

**MARSHALL SHOE & REPAIR**  
 112 W. Plaza  
 SK 5-1776  
 SOLANA BEACH

**Charles A. Lewis**  
**AQUI REAL ESTATE**

Homes Lots Acreage

756 Hiway 101 Off. PL 3-2525  
 LEUCADIA Home PL 3-3214

**NOW . . .**

**TO LIVE SAFELY AND COMFORTABLY FOREVER AFTER . . .**

University brings you **SAFETY SERVICE** for your heating and air conditioning system.

**CALL TODAY FOR DETAILS**

**University** MECHANICAL & ENGINEERING CONTRACTORS SINCE 1926  
**Air Conditioning & Plumbing**  
 546 Redwood, SHERWOOD 5-6913  
 ESCONDIDO

**VILLAGE FORGE**  
 Leucadia

• Curtain-type fireplace screens made to order: Any size, any shape  
 In 13 decorator finishes  
 • Name signs to order

1646 N. Hiway 101 PL 3-1641

Come In and See the Results

You Can Buy Durability Like This Too

**Magic Carpet Co.**  
 115 North Highway 101 Solana Beach  
 SK 5-2116

Closest Carpet Specialty Shop to Rancho Santa Fe



**FIREMEN'S BALL**—Here is part of the crowd that enjoyed a festive evening at the second annual dance of the Rancho Santa

Fe volunteer fire department held Novmber 14 in the Meetin' House at The Inn.

### 'Smoky the Bear' Hosts Volunteer Firemen's Ball

Smoky the Bear was host to 200 delighted guests when the Rancho Santa Fe Volunteer Fire Dpdepartment held its second annual dance in the Meetin' House at The Inn on November 14.

Net proceeds — \$325 — will be used to furnish the new Boy Scouts and volunteer firemen's hall.

Fire prevention was the theme of the affair, and a five-foot "Smoky the Bear," secured for the evening through the efforts of Assistant Ranger Jerry Tipton, gave pertinent advice.

Music was furnished by Dick Minor and his quintet. Spot prizes, awarded to couples who concluded a dance beneath a spot known beforehand only to the judges, were presented at regular intervals.

Among the winners were Mr. and Mrs. Emmett J. Manion Jr., Mr. and Mrs. Claude A. Welles, Mr. and Mrs. Lewis K. Pratt, and Mr. and Mrs. Clifton W.

Power.

Volunteer Captain Peter H. Gillis was master of ceremonies. Mrs. William Freck, general chairman for arrangements, has asked the Bulletin to extend sincere thanks to the following contributors:

Mr. Wes Hadden, for donating use of the Meetin' House at The Inn; Bob Francisco, Daby's, Country Squire, Rosie's, Country Maid, Rancho Hardware, Casual Corner, Country Friends and William James Interiors, for the donation of prizes; Ola Johnson, for plants used in decorating; and Mesdames C. A. Root, J. A. Fox, Albert H. Dutton, and Charles V. Gibbs, for their work in assisting Mrs. Freck.

### RSF Firemen Earn Radiological Diplomas

Rancho Santa Fe Firemen Paul Biery and James Durant have completed a 5-weeks course in radiological metering. Receipt of their diplomas qualifies them as radiological meter operators in time of war.

The course was given at Palomar College in San Marcos.

### Fire Department Will Flame-Proof Christmas Trees

Ranch residents who wish to have their Christmas trees fire-proofed need only bring them to the district fire house for spraying with fire proofing material.

This is a free service offered in the public interest and to encourage safety in the home during the Christmas season, according to Fire Chief James Fox who made the announcement.

Residents are urged to take advantage of this public service.

### Gem Show

(Continued from page three)

the setting of an emerald-cut ruby, a sapphire or an exceptionally fine diamond.

A necklace formed a laurel wreath of diamonds.

#### Jewel-Studded

A gold bracelet, jewel-studded and flexible, with soft golden tassels.

A fountain brooch with sprays of canary, and white diamonds on a base of flexible gold.

Fish with mobile fins concealing a watch.

The show will be open to the public from 11 a.m. to 4 p.m. each day.

## While Christmas Shopping ...

STOP IN TO ENJOY A BITE

AT THE COUNTRY SQUIRE TEAROOM

Try our . . .

Quick Lunch a la Carte Available on Weekdays  
Soup - Pop Overs - Sandwiches  
Salads - Desserts

Open 12:15 to 3:30  
Daily  
Closed Mondays

## TUTWILER STUDIO

Photography for the Discriminating

Portraiture Our Specialty  
SH 5-4341

154 E. Grand  
Escondido

# Chrysler - Imperial - Dodge - Plymouth

SIMCA

Complete Service Facilities

Your Direct Factory Dealer in ESCONDIDO

"Where Customers Send Their Friends"

A New Location to Better Serve You

121 N. Broadway  
SHerwood 5-5311

Hidden Valley Chrysler & Dodge

## Poinsettias Called Yuletide Symbols

Just who first discovered it, or when, we don't know. But to most Americans, a Poinsettia in full bloom has Christmas written all over it. And if you need any reminder that the season is near, just check in with your local nurseryman.

Certainly in no other part of the State — and in few parts of the country — can you enjoy as much success with Poinsettia as in Southern California. This is especially true with those lush, double - flowered varieties that are so showy.

Poinsettias prefer a rich loose soil with leaf mold and-or steer manure and sand added. Give them a non-windy location and head them back during the growing season to encourage bushy growth. When bloom is over in late winter, prune them back severely.

In areas where hard frost is common you may lose the poinsettia that's planted outdoors. In such a case try saving your Christmas Poinsettia and grow it on as a potted plant for bloom a second year.

## Garden Page

### Garden Checklist

1. It's late to start a lawn, but not too late to feed established lawns lightly. They'll store the food and get off to a flying start come spring.

2. You still see color from roses, but many plants are beginning to go dormant. Don't prune until after Christmas, though — especially in milder coastal areas. In other areas, you can wait as late as January or early February.

3. For especially exotic camellia bloom, look to the giant-flowered Reticulata varieties. Nothing in the family can match their ruffled beauty.

4. Cyclamen in pots are still a good bet for color from now into spring. You can set them outside, except in the state's coldest climates.

5. A good manure mulch, applied before winter rains will do wonders toward building humus and restoring worn-out soil. Use all the manure you can afford.

### Tuck Your Bulbs Under the Covers

When bulbs have bloomed and their blush of spring is gone, temptation is strong to do away with the drooping foliage and tidy up. If bloom the next year is desired, however, this practice will be disastrous.

The California Association of Nurserymen suggests you tuck your bulb beds under a cover of colorful annuals. Then when bulbs go out of bloom, you hardly notice the drooping foliage they leave behind.

One of the most striking combinations of any spring are yellow daffodils poking up through a cover of blue Violas.

## Delphiniums A Double-Duty Perennial

When it comes to performance among perennials, you have to hand it to the Delphinium.

This workhorse of Western gardens blooms once in spring and dies back only to come on again in summer with more tall spikes of color. And that isn't always all. In some favored spots, the Delphinium actually puts forth with a third bloom in fall.

All of this tends to wear out a single plant faster than does a colder climate where Delphinium blooms but once a year. But when you plant Delphiniums as seedlings, replacement is inexpensive, and its double duty performance far more than makes up for the minor added expense.

Seedling Delphiniums are available now in all nurseries that sport a California Association of Nurserymen sign. And if you plan to plant them, don't wait. Plants set out now have the winter months to establish themselves and will be far ahead of seedlings that aren't planted until spring.

The California gardener can know success with Delphiniums whether he gives them much attention or not. But it's the wise gardener who puts out a little extra effort at planting time. You'll find it pays a dividend of better blooms.

To begin with, you must give seedling plants good drainage and thereby limit the puddling effect of rain. Work the soil deep — over a foot for best results — and add some lime if your soil is acid. In most of the state, however, acidity is not a problem. Avoid damp places and drafts where mildew might get a toe hold.



## The Fancy Pantry

7852 Girard Ave.  
LA JOLLA  
GLencourt 4-2121

- Two of La Jolla's finest shops to serve you.
- Featuring imported & domestic groceries, wines, liquors & liqueurs.
- Featuring unique gifts and gift baskets for the holidays.
- Free deliveries each Tuesday & Friday to Rancho Santa Fe.
- Inquire about our ice cube service.

## The Town & Country

7541 Girard Ave.  
LA JOLLA  
GLencourt 4-6227

## OLA JOHNSON ... LANDSCAPE SERVICE and GARDEN SHOP

Your headquarters for landscaping supplies and service

EQUIPMENT RENTALS SPRINKLER SYSTEMS  
... for your every need ... simple, practical layouts

BEDDING PLANTS, BULBS, TREES & SHRUBS  
FERTILIZING

SCOTT'S SALE STILL ON

... complete stock of fertilizers, insecticides and plant materials

Licensed Contractor  
... for your protection

Masonry Work  
... stone, brick, etc.

Creative and practical designing

Rancho Santa Fe • In the Village Center on La Granada • PL 6-1427

YOUR Garden is our Business!



"MUSICAL STALLS"—Riding Club members play an unusual variation of the childhood game. This is a scene at the club's October 25 "fun night" get-together. Next event will be a marshmallow and weiner roast on Friday, December 5, in the courtyard of the Jack Manion house.

### Blasting Caps

(Continued from page 3)

per but exposure to the air may dull the metal.

A blasting cap may have a fuse, or plain or colored insulated wires attached to one end. Either type is equally dangerous in untrained hands.

Parents should take care to familiarize their children with the size and appearance of blasting caps, and the serious injuries they can cause.

A 16-mm motion picture entitled "Blasting Cap — Danger,"

15-minutes in sound and color which appeals to youngsters, will be shown at the fire house during the first week in January.

## ART JURY MEETS NOVEMBER 14 Six Approvals, No Denials Mark Regular Nov. Session

The following approvals were granted at the Art Jury's regular November meeting:

John Howe to subdivide his property on Via de la Valle into 2 parcels; Lt. Col. Houston Stiff to construct a residence, garage and pool on El Puente; The Inn to construct an addition to the Garden Room; Harold Hill to construct a residence and garage on El Puente.

Preliminary applications were approved as listed below:

James Ridgeway to construct a residence, garage and pool on La Orilla; Arthur G. Thorne to construct residence and garage on his property at El Vuelo and El Mirador, and George Stuart to construct residence and garage in the map 3591 area.

Consideration was given to

these eight applications:

Edward L. Ransom to make change in garage on Linea del Cielo; Harry J. Lee for "keeping of animals" on El Vuelo; Mrs. Josephine Tucker for subdivision of her six acres on La Valle Plateada into 2 parcels; Haskell Strawn for lot realignment. Robert Keith for subdivision of 9.3 acres on La Madreselva into 4 parcels; Lucia D. Taylor for lot realignment on El Camino del Norte; Mrs. K. S. Warren for lot realignment on Mimulus, and Allan R. Faust for subdivision of 4.87 acres on Lago Lindo into 2 parcels.

President Welles made a progress report on the Art Jury's follow-through on planting property where new residences are constructed.



... YOUR NEAREST FORD DEALER  
for Sales and Service

"SATISFACTION GUARANTEED"

# PETERSON FORD

IN ENCINITAS

100 North Highway 101

PLateau 3-1161

### IF YOU DEMAND UNUSUALLY FINE FOOD . . .



Our new Chef invites you to come in for luncheon or dinner



## THE Inn AT Rancho Santa Fe

R. M. CLOTFELTER AND WES HADDEN, PLAZA 6-1131

## Does your range make cooking "child's play"?



## When you cook electrically!



WITH A MODERN ELECTRIC RANGE YOU CAN ANSWER YES TO ALL THESE QUESTIONS:

- |  | YES                                 | NO                       |
|--|-------------------------------------|--------------------------|
| Does your range turn off automatically when foods are cooked "just right"?             | <input checked="" type="checkbox"/> | <input type="checkbox"/> |
| Do you get consistently good results every time you bake?                              | <input checked="" type="checkbox"/> | <input type="checkbox"/> |
| Is cooking fun . . . fast . . . and practically foolproof?                             | <input checked="" type="checkbox"/> | <input type="checkbox"/> |
| Can you cook a perfect meal while you're shopping?                                     | <input checked="" type="checkbox"/> | <input type="checkbox"/> |
| Do pots and pans stay "white glove" clean?   | <input checked="" type="checkbox"/> | <input type="checkbox"/> |
| Does your kitchen stay fresh and cool?   | <input checked="" type="checkbox"/> | <input type="checkbox"/> |
| Can you boil a pint of water in two minutes?   | <input checked="" type="checkbox"/> | <input type="checkbox"/> |
| Are the foods you cook always deliciously moist and juicy?                             | <input checked="" type="checkbox"/> | <input type="checkbox"/> |
| Does your range "take care of itself" — giving you more time for your home and family? | <input checked="" type="checkbox"/> | <input type="checkbox"/> |

Electric cooking is *easy, quick, clean, cool, economical*, and always *dependable*. What's more, the automatic features of electric cooking enable you to get out of the kitchen . . . and into the family circle.

**TALK WITH YOUR DEALER SOON!** Or if more convenient, visit the nearest office of the San Diego Gas & Electric Company where a specialist in electric cooking and water heating will help you with your plans to



## live better...electrically!

Incidentally . . . while you're investigating the benefits of electrical living, don't overlook the advantages of an *Electric Water Heater*. Fast, clean, dependable. And because an electric water heater requires no flue or vent, it can be installed in any location that's convenient.

SAN DIEGO GAS & ELECTRIC COMPANY



**ON WITH THE SHOW**—This is the "audience-eye" view of one of the Nor-San Players' current Saturday evening "mellerdrammers" at the Meadowlark Ranch, 20 minutes up the San Marcos road. The audience sits around tables where refreshments are served during the performance.

## New Manager, Chef Named At Meadowlark Ranch Club

Louis Zima, formerly with the Rincon Springs Cafe and Victor Hugo's restaurant, has been appointed chef at the Meadowlark Ranch club, according to Herbert A. Engert, club manager. Zima will feature a daily

chef's specialty as well as a "brunch" and evening buffet on Sundays.

Engert also is a recent addition to the club's staff. He came here in early September with his wife, Susan. The club now has a membership of approximately 150.

The club features dancing on week ends and Nor-San Players stage productions.

## Plans Announced For Enlarged Club Facilities

The Meadowlark Ranch Club announced plans recently for greatly enlarged club and recreational facilities, and to offer home sites for new residents seeking relaxed living in an ideal smog and fog-free climate.

The Meadowlark Ranch property now constitutes some 1300 acres ready for development, with water and sewer lines installed. Temperatures in this area are reported to be cooler than in surrounding districts.

The club appeals to family memberships. Its present "pitch and putt" golf course will be enlarged to three times the present size. The stables are to be renovated, and facilities added to accommodate rodeos as well as horse shows. The area's "trout pond" will be improved, and a sandy bottom and beach added to make it an ideal "swimmin' hole."

A typically Western shopping area will also be erected within the confines of the club grounds.

## United Fund Nears Goal

"Although the United Fund drive is officially over for another year, we know that there are people who were missed, and we urge them to contribute by contacting Mr. Smart, drive chairman, at the Association office."

This is the way it was put by Mrs. Edward D. Havens, in reporting that the drive had raised \$13,629.

This amount, reported at press time, is 96 percent of a revised goal of \$14,200 set by United Fund headquarters for the Ranch. It is more than the total raised here in last year's drive.

Serving as assistants to the chairman, Mrs. La Motte Cohu, Mrs. John F. Goodwin and Mrs. Havens have performed invaluable service by carrying on after the official drive was over, Mr. Smart said.



R.M. Clotfelter  
Rancho Santa Fe, California

# THE TRADIN' POST

**Gift Shoppe**  
Merle Norman Cosmetics  
Large Christmas Assortment  
Theatre Arcade  
SK 5-1695  
Solana Beach

**TIEDY'S**  
**TELEVISION & APPLIANCES**  
RCA COLOR TV  
PHILCO — PACKARD BELL  
MAYTAG  
509 First St. PL 3-1877  
ENCINITAS

**Rancho Hardware**  
in the Village Center  
For Christmas  
Give Something Useful  
**Also Barbecue Supplies**  
We Give S&H Green Stamps  
PL 6-1702

**CULLIGAN Soft Water SERVICE**  
for BETTER LIVING  
111 So. Cedros P. O. Box 278  
SOLANA BEACH  
Phone SK 5-1022

*Casa de las Flores*  
Anne Sterrett  
1444 Highway 101  
DEL MAR  
SK 5-1091  
Floral Designing with a Flair

For any make NEW or good used car, call **BILL APPLE**,  
**A&A MOTORS**  
QUALITY CARS  
PL 3-1702  
204 N. Hwy 101 Encinitas

**Gailey's Photo Supply**  
"Escondido's Most Complete"  
230 E. Grand  
Phone SH 5-7823 - Escondido

## MacPherson's

Men's and Women's  
Quality Clothing  
515 First Street  
PL 3-1953  
Encinitas

**ENCINITAS APPLIANCE**  
G E and Frigidaire  
620 2nd St. PL 3-1626

*El Petite Beauty Salon*  
Helen Pooler, owner  
SKYline 5-1088  
WILSON THEATRE ARCADE  
ON THE PLAZA  
SOLANA BEACH

**ENCINITAS LUMBER CO.**  
Everything and anything  
for building  
745 First St. Encinitas  
PL 3-1148

**GOODIES GALORE**  
COFFEE SHOP  
The only Coffee Shop in Town  
588 Hiway 101 Encinitas

**DEL MAR PAINT and HARDWARE**  
Ruth Raney and Eileen Woods  
Highway 101 SK 5-1666  
at 12th Ave. DEL MAR

**DOUGLAS HANNA**  
The Linen Shop  
**WAMSUTTA SHEETS**  
and TOWELS  
1141 Prospect St. • La Jolla

**JOHN COLE'S**  
Book & Craft Shop  
7871 Ivanhoe Ave.  
LA JOLLA, CALIFORNIA  
GLencourt 4-4766