

# Totem Lodge

ON BURDEN LAKE



Choice of the Select





*Totem Lodge*

COUNTRY CLUB

ON BURDEN LAKE, AVERILL PARK, N. Y.

## A Private Estate in the Country

**T**OTEM LODGE is situated in a beautiful natural setting on the shores of its own picturesque lake, surrounded by 700 acres of pine trees and landscaped gardens, affording our guests the comfort and pleasure of a private estate.

More than thirty years of the same ownership-management assures you of a wholesome and colorful vacation. The management is always in close personal contact with its guests. A cordial feeling of friendship is created and mutually enjoyed by all. Everyone is at home—there is never that feeling of being lost in the crowd. You will find interesting people from near and far who have made Totem their summer playground.

*The Cuisine is nationally recognized as the very ultimate in perfection. Our pride in its excellence is shared by all our guests.*

Socially, Totem's brilliance is so distinctive that it remains a lasting memory. A complete program of activities and entertainment, including elaborate stage shows and first run motion pictures, is planned for your enjoyment.

For your daytime pleasure, Totem offers every athletic facility including an excellent golf course on the premises. During inclement weather, you can enjoy the luxury of an indoor tiled steam heated swimming pool, sun-ray lamps, gymnasium and Turkish steam room with electric cabinet; masseurs in attendance.

Every accommodation is equipped with bathroom facilities. Every room has a private telephone. The main buildings have automatic sprinkler systems and radios. Most every room and cottage has a heating and cooling unit, individually controlled.

Totem is reached via the main New York Central Lines, Greyhound Bus and all major airlines to Albany. New parkways lead the motorists directly to our gate.

A separate unit apart from the adult grounds for a limited number of children; facilities include an outdoor tiled swimming pool, playground, playhouse and separate dining room. Games, amusements, entertainment and movies are planned and supervised by a competent staff of counselors.

DAVID N. KATZ  
HERBERT A. KATZ

Same ownership management  
for over 30 years.



*Choice of the Select*

**TOTEM LODGE**  
COUNTRY CLUB

ON BURDEN LAKE, AVERILL PARK, N. Y.



# One of America's Foremost



Championship Tennis Courts

A Drinking Spa

Colonnades—Club

The Lobby in Burden Hall

Golf Course

A Room in Burden Hall

Indoor Swimming Pool—for Inclement Weather

Biking is Popular at Totem

# st Resorts -



Lobby—Leona Lodge

Dining Hall Parlor

Leona Lodge Overlooking Burden Lake

Lounge

The Premises

Garden Approach to Burden Lake

Water Sports Abound on Burden Lake



# RESORT-*preeminent*

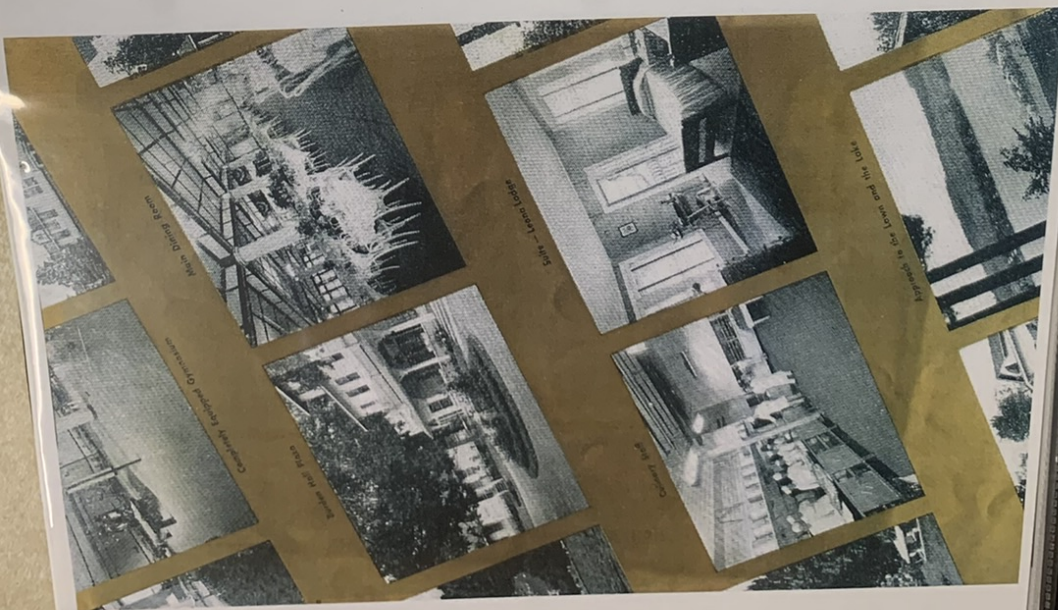
By its courageous enterprise, by its thoroughness in every detail and by its very completeness for the summer vacationist, Totem Lodge has achieved acknowledged leadership as a resort. Year after year Totem has pioneered new attractions and so improved on old ones that its guests have always enjoyed a most glorious vacation, packed with activities, thrills and many happy hours.



This little booklet with its few random glimpses is presented to you who have not yet visited Totem Lodge, in the hope that you may sense some of its spirit. But, withal, it is only when you have played and laughed, and joined the happy gatherings, that you will understand more fully why Totem guests come again and again, year after year, and why Totem Lodge is recognized as the Resort-preeminent.

May we invite you to come to Totem and *enjoy* your vacation.

*Savittsky*  
Managing Director.





## *The* LOCATION *is ideal*

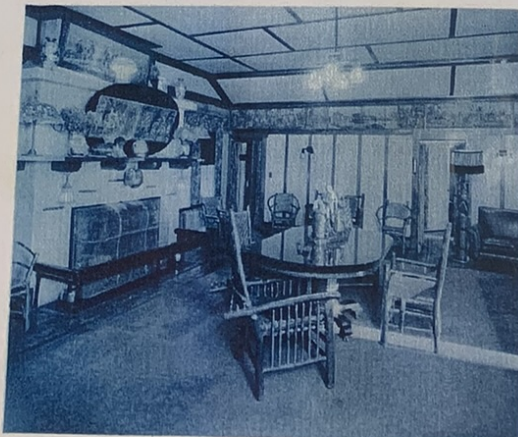


Situated on its own beautiful Burden Lake, in a glorious natural setting, Totem Lodge is easily accessible from all points of the compass.

In addition to the many fine roads leading to Burden Lake—(Averill Park—New York), the New York Central R. R., the Boston and Albany R. R., the Hudson River Night Line, and the Hudson River Day Line are excellent means of transportation to Albany, at which point there is a Totem bus or car to whisk you away to Burden Lake which is but 14 miles from the Capital City. Detailed information concerning automobile routes and railroad transportation will be found on the last page of this booklet.

Although easily accessible, Totem Lodge is a veritable retreat, away from the bustle of the city or even the usual village.

## *Totem's history is* ROMANCE

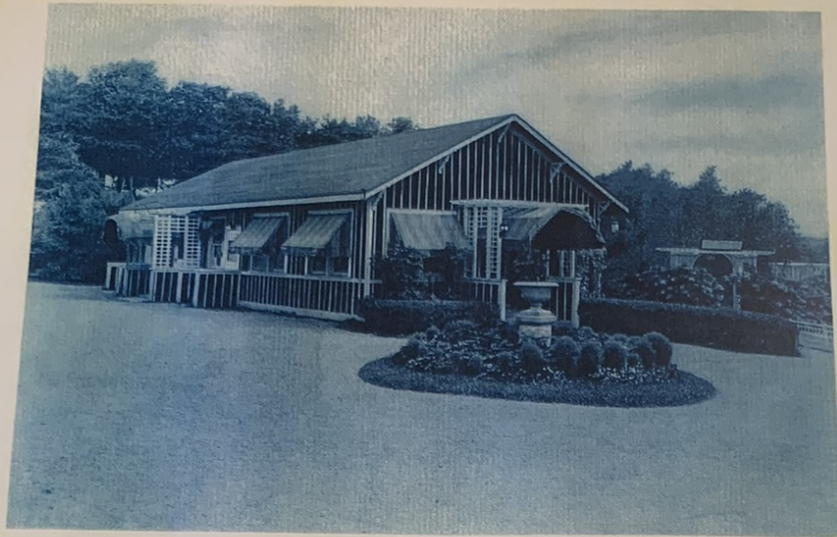


*In the Lodge—one time rendezvous of famous celebrities*

Not many years ago, a great captain of finance roamed through the majestic ranges of the Empire State in quest of a site where he might build a country home. He selected what is now Totem Lodge and created an estate which was widely known as the "Switzerland of New York State."

With the cooperation of the famed celebrities and statesmen who often visited the Burden Lake rendezvous, the giant Totem Pole was brought from Alaska and transplanted on the lawn of the estate. The Totem Pole is an Indian symbol of good luck and happiness, and many interesting tales have centered around it.





*The Administration Building where one begins a pleasant vacation*



With this romantic background, set in this beautiful panorama, steeped in the air of stateliness and exclusiveness, and with the spirit of good luck and happiness, Totem has "carried on." It has added the modern touch in the interests of comfort and hospitality, and made it *your* private estate in the country.

*The Totem Pole is a symbol of good luck and happiness*



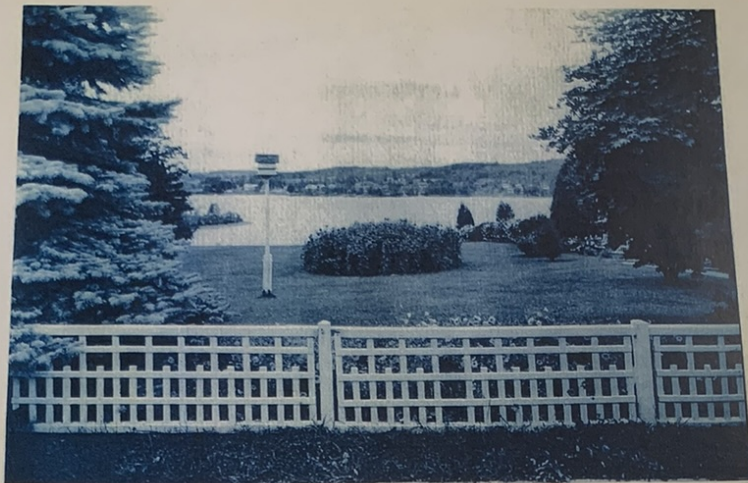


*The art of skillful gardeners is in evidence everywhere*



*From every angle Nature glorifies Totem. The natural beauty of this secluded estate is further enhanced by the deft and skillful touches of the gardener's staff*





*All day the sun plays on the lawn and the friendly gatherings*

## SPORTS *for every playmood*



'Round the clock of a day's sports at Totem makes for a perfect pleasure program. The athletic personnel plans so gay a variety of attractive events, that there is never a moment which lags for lack of activity!

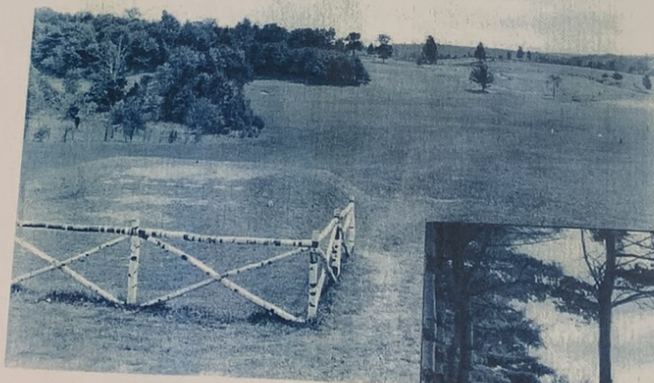
Begin each day with a wide-awake session of keep-fit exercises—then take your choice of tennis . . . handball . . . boating . . . swimming . . . basketball . . . baseball . . . skating . . . horse-back riding . . . or golfing on the premises. Or, if you take to lighter diversion, try a game of bridge . . . billiards . . . ping-pong. There are ample facilities for everyone and each sport has its own capable instructor, ever ready and willing to help you "pick up" a few additional pointers—if you wish to.

Whatever your play-moods, you are sure to satisfy them fully at Totem.





*Water sports abound on beautiful and exclusive Burden Lake*

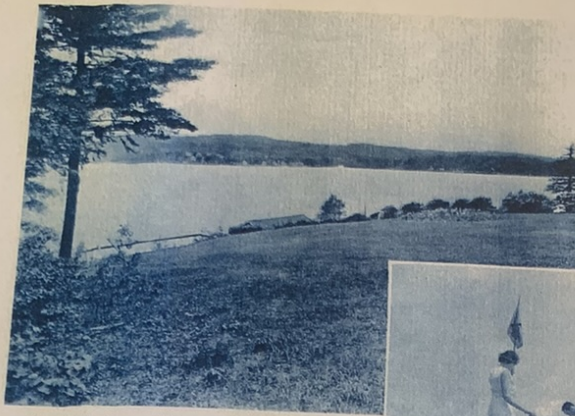


*A sporty golf course right on the premises*



*For handball and basketball enthusiasts*

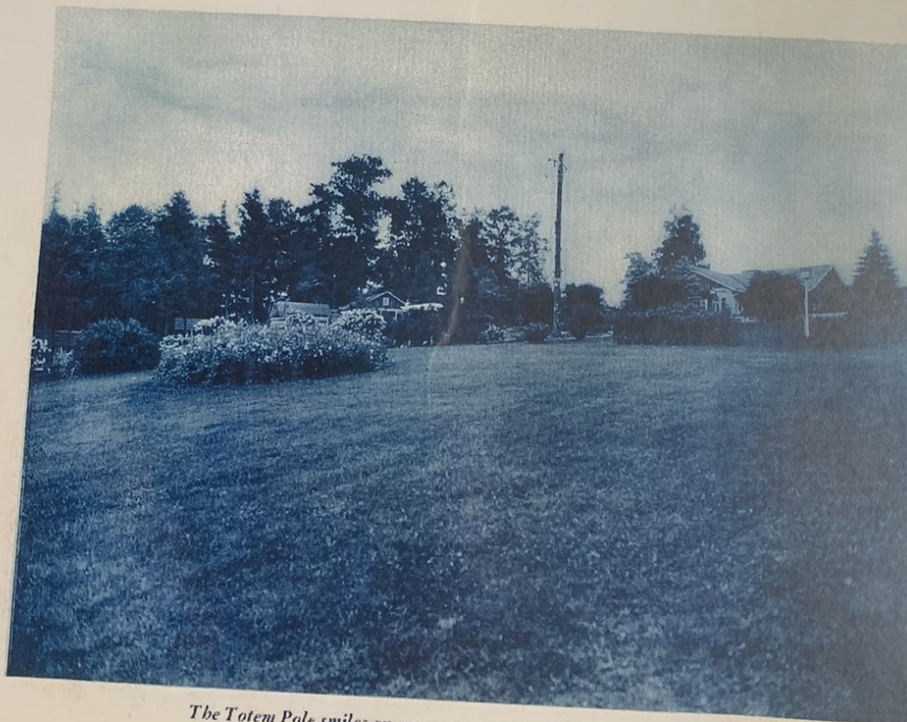




*Burden Lake — rich in natural beauty — at the foot of Totem's spacious lawn*



*A tense moment on one of the greens*



*The Totem Pole smiles on a sunny retreat from the bathing activities*



## INDOOR *sports*



In addition to the many outdoor activities and the water sports on beautiful Burden Lake, Totem Lodge also provides ample facilities for indoor sports.

A successful vacation should include a continuous program of activity and sports no matter what the weather. For that purpose Totem offers an indoor, tiled, steam-heated swimming pool with sun ray lamps and a completely equipped indoor gymnasium. In the event of inclement weather Totem's guests may enjoy swimming, water sports, basketball, volley ball, handball, ping-pong, pool and billiards. In addition there are daily physical training classes and complete equipment such as rowing machines, punching bags, weight-lifting and electrical reducing apparatus, etc.

With all these provisions for an uninterrupted vacation it is not surprising that our guests have originated the saying "It never rains at Totem".



*For inclement weather — a steam-heated tiled indoor swimming pool*



*Completely equipped, the indoor gymnasium offers a countless number of activities*



## CUISINE-*an achievement*



Although Totem's 650 acres offer its guests a wide diversification of activity, all are of one accord when meal time rolls around. The lure of Totem's cuisine brings together a happy gathering in the spacious and sunny dining hall.

Here skilled chefs have planned masterly menus and prepared wholesome food with almost reverent care. These meals are one of the cardinal virtues upon which Totem Lodge has reached its present state of approval. The time and attention which is devoted to the selection of provisions for Totem's guests is so painstaking, that it deserves particular mention here. The rule is purity, goodness, and wholesomeness.

Served by a competent and courteous personnel, the cuisine is a true delight to the hearty and a temptation to the languid.



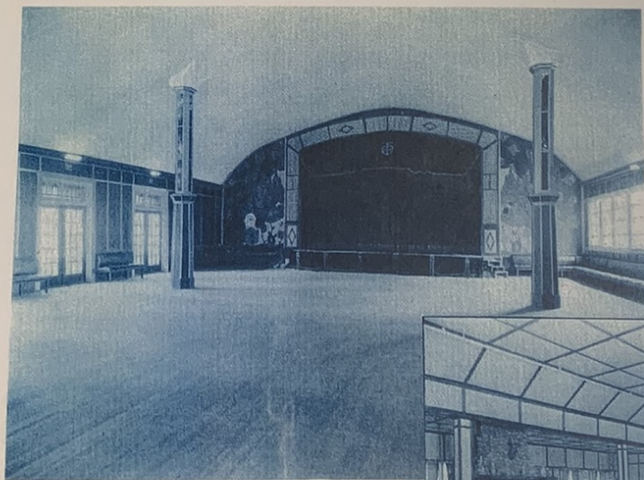
*Meals are prepared with almost reverent care*



## SOCIALLY-*brilliant*



All through the rush of the day's sports social life is a first consideration at Totem—but it shines in fullest brilliance when evening comes! A spirit of scintillating gaiety . . . smooth, rhythmic dancing to the tune of a lively orchestra . . . and a company of skilled artists, famous on stage, screen and radio, present every evening, a complete show brilliantly directed and well balanced . . . entertainment on a par with Broadway's finest. These stage presentations are further enhanced by the preview showing of the latest Hollywood releases with Totem's talking picture equipment which is the last word in Western Electric Sound apparatus . . . and for those who wish the gaiety of the evening to "go on" there is that perfect late-hour rendezvous, the new Spanish Grill, overlooking Burden Lake.



*Every evening a dance  
and scintillating entertainment*



*The lighter mid-day activities are enjoyed in the Club-house*

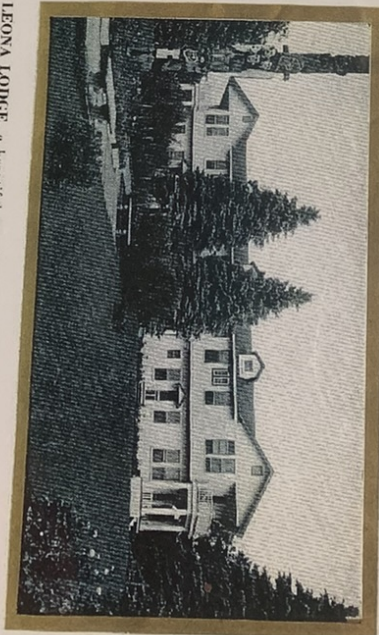




*The Cuban Grill — an informal rendezvous for late hour entertainment!*



**THE COLONNADES**... a magnificent new theatre and club lounge overlooking Burden Lake, with every modern entertainment feature; presenting elaborate stage productions... headlining stars of stage, screen, radio and television... first run motion pictures... a famous Rhumba and American Orchestra for your dancing pleasure.



**LEONA LODGE**, a beautiful new building, replete to the last detail—delightful rooms and two room suites, pine-paneled walls and Scandinavian throughout; equipped with telephones, private tiled bath rooms, long mirrored doors, maple furnishings, handsome decorations and private sun balconies overlooking landscaped gardens and Burden Lake.



## MEMORIES *and* FRIENDS

While you are at Totem Lodge you are in the liveliest spot in the summer-time world. You are one of a group among delightful people, enjoying the vigor of life and vacationing happily. You will make charming acquaintances and lasting friendships—and when vacation time is over, your baggage is not the only thing you take with you.



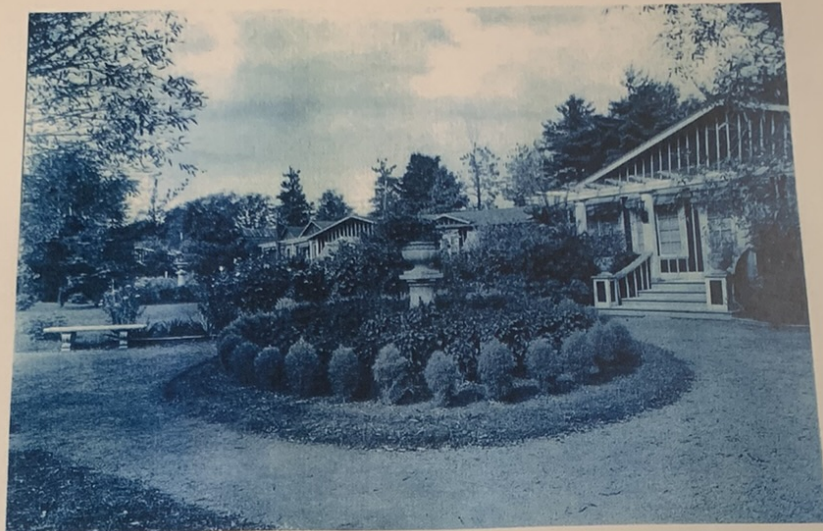
There will be memories and friends. Memories that will bring you added pleasure in contemplation or in conversation. Memories that will create a desire to go back the following year to vacation again at Totem. And friends—What greater reward can one hope to acquire on a vacation than good wholesome friendships—in good taste, and of the better kind?

And so, we repeat our invitation. Come to Totem and *enjoy* your vacation.



*Vacation contacts often mellow into lifelong friendships*





*A garden spot in the Villa Royal*



*A little diversion is always to be found in the lounge of the Villa Pines*





*A quiet smoke—a pleasant chat—sun parlor in the Villa Royal*



*Cheer and intimate hominess are found in every lodging*





*A quiet smoke—a pleasant chat—sun parlor in the Villa Royal*



*Cheer and intimate hominess are found in every lodging*



## *The new* BURDEN HALL



Through all the years of Totem's existence the importance of comfortable accommodations has been fully recognized. A major step in this direction was the installation long ago of de luxe beds and bedding for every type of accommodation. Since then, the many advances made in the rooms and their furnishings, not to mention the finer touches of immaculate linens and personal details, have brought Totem accommodations to the high standing they now hold.

This ambition to provide the maximum comfort in living quarters reached a new height with the opening of "Burden Hall". Luxurious accommodations, every room equipped with radio, telephone, private shower and lavatory, and spacious lobbies provide a maximum of comfort and convenience.

*Stairway to the Lobby*

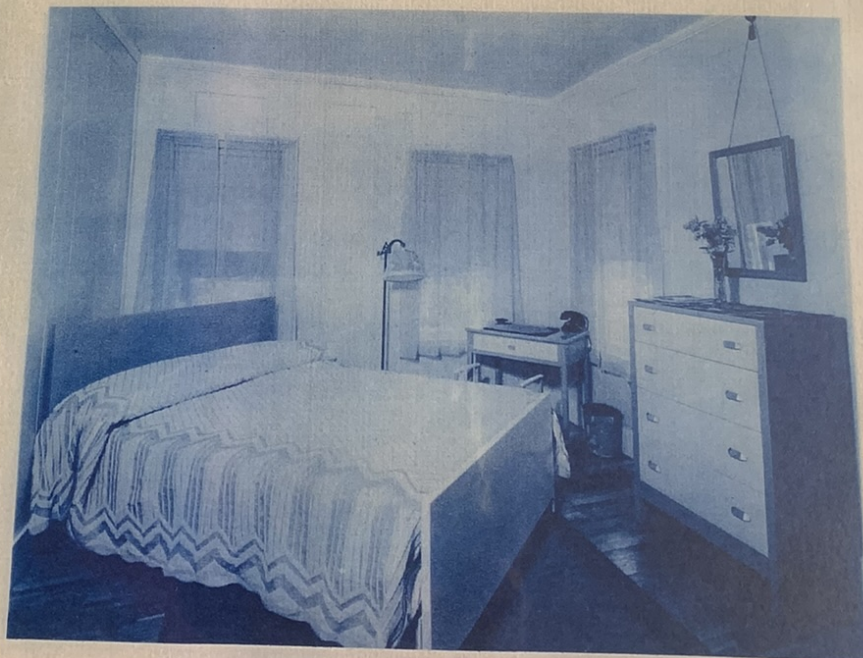


*Wide corridors, with appointments that bespeak the charm and simplicity of Burden Hall*





*The lobby in Burden Hall is spacious, comfortable and decidedly popular*  
*A glimpse of Burden Hall*



*The living quarters of Burden Hall are complete in every detail. Private shower, lavatory, radio and telephone in every room*



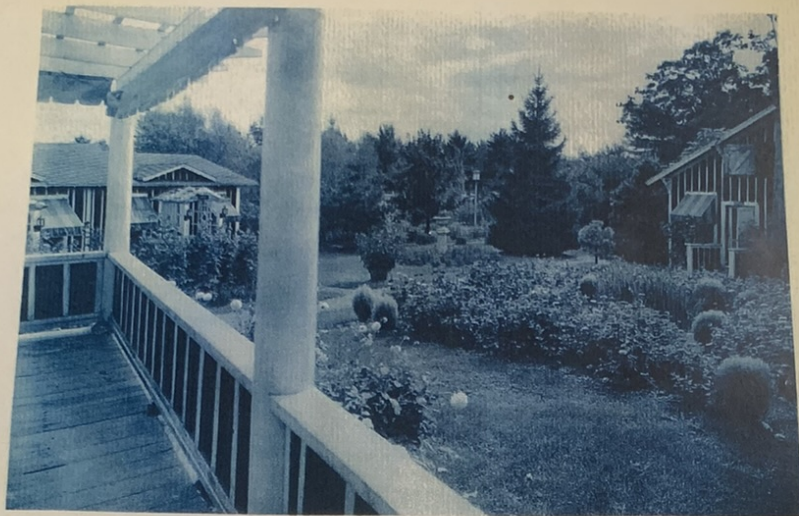


*The lobby in Burden Hall is spacious, comfortable and decidedly popular  
A glimpse of Burden Hall*



*The living quarters of Burden Hall are complete in every detail. Private  
shower, lavatory, radio and telephone in every room*





Every cottage is a little home on a big estate

## Facts and Figures

### Location:

On the Albany Post Road, 14 miles from Albany. In the heart of the Alps Mountains, 1200 feet above the sea level. 500 acres of pine-covered terrain.

### Accommodations:

Totem's living quarters are protected against fire by a modern sprinkler system installation.

### For Men:

Men's quarters of small bungalows along the lake—running water and electric lights. Villas—excellent furnished with private showers and every modern improvement.

### Women's Quarters:

Bungalows in the pine—electric light, running water, etc. Villas—charmingly appointed with private showers and every modern improvement.

### For Married Folks:

Lodges and Villas—all de luxe quarters with all modern conveniences.

Lodge—Lodge accommodations provide hot and cold running water in each room adjoining showers, bath and lavatories, electric bath and de luxe furnishings and furniture.

Villas—All villa accommodations include hot and cold running water, private showers and lavatories for each room and fitted with de luxe furniture.

### Dress:

Informal.

### Rates:

During July and August—\$42.50 and proportionately higher for the more pretentious accommodations for June (up to June 25th) (For September beginning after Labor Day)—Special low rates for all accommodations.

### Address:

Averill Park, On Burden Lake, New York.

### Telephone:

Averill Park, 139-140-141-142-143-144-145-146, all Direct Trunk Lines.

### Service:

- Valet.
- Barber and manicure.
- Garage.

### Season:

May to October.

### Accessibility:

#### Train:

N. Y. Central from Grand Central Station to Albany.  
Time: 3 hours by express.  
Fare: \$5.13 one way.

#### Boat:

Hudson River Day Line, leaves foot of 42nd Street, 9:20 A.M. Arrives Albany, 6:30 P.M.  
Fare: \$3.35 one way.

Albany Night Line, leaves foot of Canal Street, 6:00 P.M. Arrives Albany 6:00 A.M. Fare: \$7.00 round trip, exclusive of stateroom. One way of gaining as much time for vacationing as possible is to travel by the Albany Night Boat, which travels north while you sleep and brings you into Albany at early morning where motor bus awaits you. You arrive at Totem in time to begin the day with an early breakfast.

Rates on Night Boat during June and September are lower than those quoted above.  
All time is daylight saving time.

### Motor:

Albany Post Road (U.S. 9E.), Broadway, Yonkers, Peekskill, Poughkeepsie, Hudson, Valhalla, East Greenbush, into U.S. 9, Defreesville, turn right to Averill Park, Burden Lake, Totem Lodge.

### Short Route:

Same as above through Valhalla, then to East Schodack, turn right to Millers Corners and follow signs to Totem Lodge.

### What Totem Offers:

- \*Golf
- \*Tennis
- \*Canoe
- \*Boat
- \*Handball Courts
- \*Basketball Courts
- \*Baseball
- \*Roller Skating
- \*Pool and Billiards
- \*Ping Pong
- \*Aquatics
- \*Electric Bath
- \*Turkish Hot Rooms
- \*Horseback Riding
- \*Tulip
- \*Tanning Pictures
- \*Social Activities
- \*Country Club Activities
- \*Theatricals
- \*Cathartics

\*Additional charge for golf, pool and billiards and horseback riding.



## Facts and Figures

### Location:

On the Albany Post Road, 14 miles from Albany. In the heart of the Alps Mountains, 1200 feet above the sea level. 500 acres of pine-covered terrain.

### Accommodations:

Totem's living quarters are protected against fire by a modern sprinkler system installation.

#### FOR MEN:

Men's quarters of small bungalows along the lake—running water and electric lights. Villas—excellently furnished with private showers and every modern improvement.

#### WOMEN'S QUARTERS:

Bungalows in the pines—electric light, running water, etc. Villas—charmingly appointed with private showers and every modern improvement.

#### FOR MARRIED FOLKS:

Lodges and Villas—all de luxe quarters with all modern conveniences.

**Lodge**—Lodge accommodations provide hot and cold running water in each room adjoining showers, bath and lavatories, electric bath and de luxe furnishings and furniture.

**Villas**—All villa accommodations include hot and cold running water, private showers and lavatories for each room and fitted with de luxe furniture.

### Dress:

Informal.

### Rates:

During July and August—\$42.50 and proportionately higher for the more pretentious accommodations. For June (up to June 25th) (For September beginning after Labor Day)—Special low rates for all accommodations.

### Address:

Averill Park, On Burden Lake, New York.

### Telephone:

Averill Park, 139-140-141-142-143-144-145-146, all Direct Trunk Lines.

### Service:

- Valet.
- Barber and manicure.
- Garage.

### Season:

May to October.

### Accessibility:

#### TRAIN:

N. Y. Central from Grand Central Station to Albany.

Time: 3 hours by express.

Fare: \$5.13 one way.

#### BOAT:

**Hudson River Day Line**, leaves foot of 42nd Street, 9:20 A.M. Arrives Albany, 6:30 P.M. Fare: \$3.25 one way.

**Albany Night Line**, leaves foot of Canal Street, 6:00 P.M. Arrives Albany 6:00 A.M. Fare: \$7.00 round trip, exclusive of stateroom. One way of gaining as much time for vacationing as possible is to travel by the Albany Night Boat, which travels north while you sleep and brings you into Albany at early morning where motor bus awaits you. You arrive at Totem in time to begin the day with an early breakfast.

Rates on Night Boat during June and September are lower than those quoted above.

All time is daylight saving time.

#### MOTOR:

Albany Post Road (U. S. 9E.), Broadway, Yonkers, Peekskill, Poughkeepsie, Hudson, Valatia, East Greenbush, into U. S. 9, Defreetsville, turn right to Averill Park, Burden Lake, Totem Lodge.

#### SHORT ROUTE:

Same as above through Valatia, then to East Schodack, turn right to Millers Corners and follow signs to Totem Lodge.

### What Totem Offers:

- |                     |                         |
|---------------------|-------------------------|
| *Golf               | Electric Bath           |
| Tennis              | Turkish Hot Rooms       |
| Canoes              | *Horseback Riding       |
| Boats               | Library                 |
| Handball Courts     | Talking Pictures        |
| Basketball Courts   | Social Activities       |
| Baseball            | Country Club Activities |
| Roller Skating      | Theatricals             |
| *Pool and Billiards | Calisthenics            |
| Ping-Pong           |                         |
| Aquatics            |                         |

\* (Nominal charge for golf, pool and billiards, and horseback riding.)



LOCATED on Burden Lake, Averill Park, New York . . . 150 miles from New York City . . . 14 miles from Albany.

NEW YORK OFFICE: Longacre Building, 42nd Street and Broadway. Phone BRyant 9-2914.

DRESS: Informal.

SERVICE: Valet, Barber and Manicure, Garage, Telegraph, General Service Shoppe. TELEPHONE: Averill Park, 138 to 147, inclusive. All direct trunk lines.

WHAT TOTEM OFFERS: \*Golf on Premises, Tennis, Canoes, Boats, Handball, Basketball, Baseball, Roller Skating,

## FACTS and FIGURES

\*Pool and Billiards, Ping-Pong, Aquatics, Electric Bath, Turkish Hot Room, \*Horseback Riding, Library, Talking Pictures, Social Activities, Country Club Activities, Theatricals, Calisthenics.

\*Nominal charge for golf, billiards, and horseback riding.

TRANSPORTATION: (All time stated is Daylight Saving Time). A Totem bus or car leaves from Albany for Totem Lodge four times daily: From the Albany Night Boat Pier at 7:45 A.M., from the Railroad Depot at 12:30 P.M., 6:55 P.M. (7:00 P.M. at the Day Boat Pier), and at 9:10 P.M.

If you plan to reach Albany at any time not mentioned above, please notify us so that we can make arrangements to meet you. For guests leaving from New York City, the Hudson River Night Line, the Hudson River Day Line, and the New York Central R. R. are the best means of transportation. The following New York Central trains are suggested (from Grand Central): (1) Empire State, leaving at 9:30 A.M.; (2) Train No. 15, leaving at 4:00 P.M.

For guests leaving from cities other than New York, railroad and bus connections are made to Albany, New York.

## AUTOMOBILE ROUTES

NEW YORK CITY: Albany Post Road (U. S. No. 9E) . . . Broadway . . . Yonkers . . . Poughkeepsie . . . Hudson . . . Valatie . . . continue 14 miles North . . . Schoharie Center . . . turn right to Route No. 150 . . . E. Schoharie . . . Sliter's Corners . . . turn right to Burden Lake, OR, Bronx River Parkway . . . Route No. 9E . . . Poughkeepsie . . . then as above.

MONTREAL (Quebec No. 93) . . . Lacolle . . . U. S. No. 9 . . . Roules Point . . . Plattsburg . . . Elizabethtown . . . Chestertown . . . Glens Falls . . . Saratoga . . . Albany . . . Rensselaer . . . Route No. 152 . . . Sliter's Corners . . . Burden Lake.

NEW HAVEN: (Conn. No. 67) . . . Bethany . . . Naugatuck . . . Conn. No. 8 . . . Waterbury . . . Thomaston . . . Torrington . . . Winsted . . . W. Becket . . . E. Lee . . . Lee . . . Lenox . . . Pittsfield . . . U. S. No. 20 . . . E. Lebanon . . . W. Lebanon . . . Route No. 66 . . . E. Nassau . . . Hoag's Corners . . . left to Burden Lake.

BOSTON: (Mass. No. 9) . . . Leave on Baylestown St. to Worcester Turnpike . . . Brookline . . . Worcester . . . Pittsfield . . . then as above to Burden Lake.

PROVIDENCE, R. I.: (R. I. No. 101) . . . Chepachet . . . Conn. No. 101 . . . Putnam . . . Conn.

No. 91 . . . South Woodstock . . . Conn. No. 93 . . . South Bridge . . . Mass. No. 131 . . . Fiskdale . . . U. S. No. 20 . . . Pittsfield . . . then as above to Totem.

HARTFORD: (Conn. No. 101) . . . Avon . . . Winsted . . . Conn. No. 8 . . . Colebrook River . . . Mass. No. 8 . . . W. Becket . . . U. S. No. 20 . . . Pittsfield . . . then as above to Burden Lake.

BUFFALO: (New York No. 5) . . . Batavia . . . Geneva . . . Syracuse . . . Chittenango . . . Cherry Valley . . . U. S. No. 20 . . . Cherry Valley . . . Albany . . . Rensselaer . . . Route No. 152 . . . Sliter's Corners . . . Burden Lake.

ROCHESTER: Rochester . . . Syracuse . . . Utica . . . Albany . . . Rensselaer . . . Route No. 152 . . . Sliter's Corners . . . Burden Lake.

SCRANTON, PA.: U. S. No. 11 . . . Binghamton . . . N. Y. No. 7 . . . Oneonta . . . Duanesburg . . . U. S. No. 20 . . . Albany . . . Rensselaer . . . Route No. 152 . . . Sliter's Corners . . . Burden Lake.

PITTSBURGH: (U. S. No. 22) . . . Blairsville . . . Holydaysburg . . . Binghamton . . . N. Y. No. 7 . . . then as above to Burden Lake.

WASHINGTON, D. C.: Washington . . . Conn. No. 93 . . . Harrisburg . . . Bethlehem . . . Hackettstown, N. J. . . Middletown, N. J. . . Kingston . . . Albany . . . Rensselaer . . . Route No. 152 . . . Sliter's Corners . . . Burden Lake.

PHILADELPHIA, PA.: Philadelphia . . . Delaware Water Gap . . . Port Jervis . . . Wurtsboro . . . Kingston . . . Albany . . . Rensselaer . . . Route No. 152 . . . Sliter's Corners . . . Burden Lake.

RICHMOND, VA.: Richmond . . . Fredericksburg . . . Washington . . . then as from Washington, listed above.

ELIZABETH, N. J.: (U. S. No. 1) . . . Jersey City . . . Kingston . . . Albany . . . Rensselaer . . . Route No. 152 . . . Sliter's Corners . . . Burden Lake, OR, cross George Washington Bridge and take roads listed under New York City.

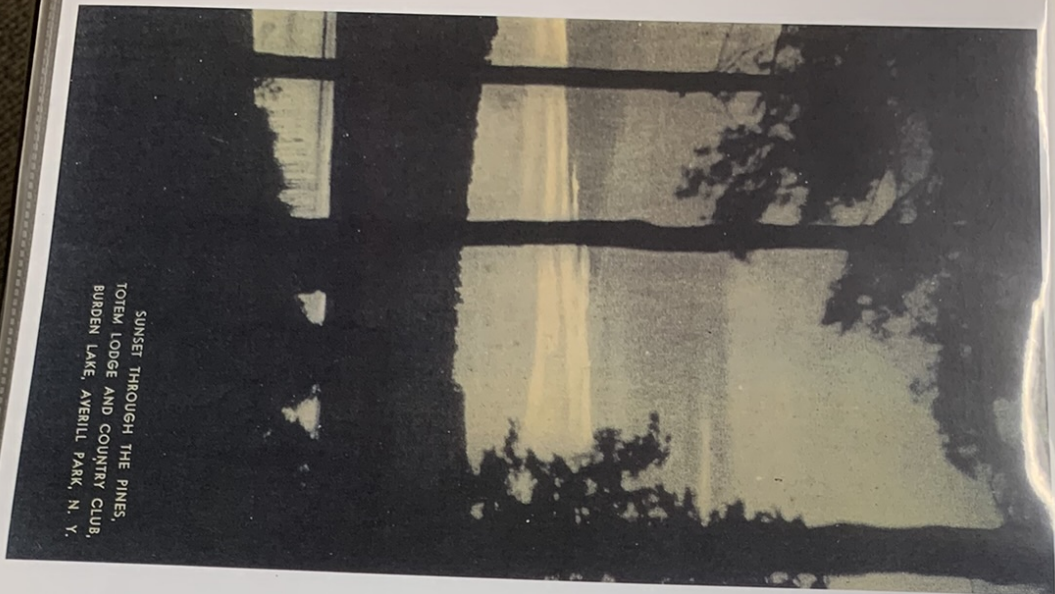
PATERSON, N. J.: Paterson . . . Kingston . . . Albany . . . Rensselaer . . . Route No. 152 . . . Sliter's Corners . . . Totem.

CHICAGO: Chicago . . . Toledo . . . Cleveland . . . Erie . . . Batavia, N. Y. . . Geneva . . . Syracuse . . . Utica . . . Albany . . . Rensselaer . . . Route No. 152 . . . Sliter's Corners . . . Burden Lake.

TOTEM POLE, TOTEM LODGE AND COUNTRY CLUB, BURDEN LAKE, AVERILL PARK, N. Y.







SUNSET THROUGH THE PINES,  
TOTEM LODGE AND COUNTRY CLUB,  
BURDEN LAKE, AVERILL PARK, N. Y.

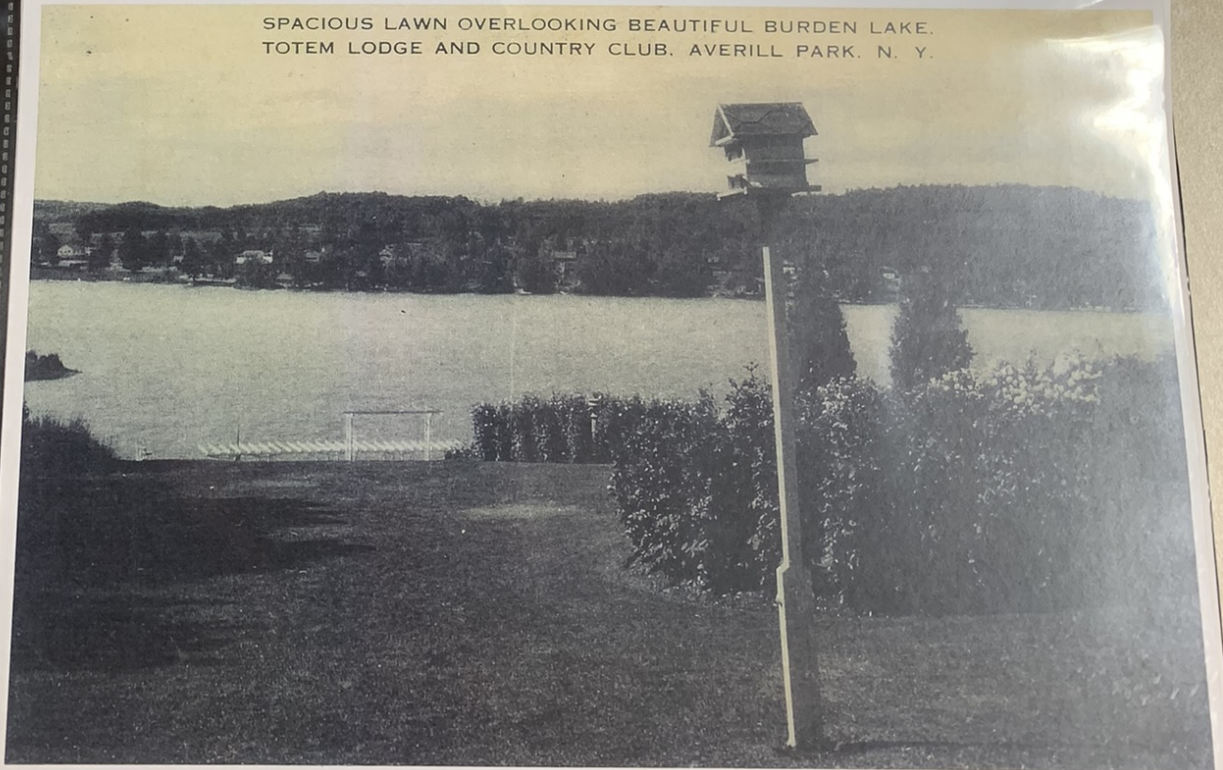


GREETINGS FROM TOTEM LODGE AND COUNTRY CLUB,  
BURDEN LAKE, AVERILL PARK, N. Y.





THE LOBBY IN BURDEN HALL  
TOTEM LODGE AND COUNTRY CLUB, BURDEN LAKE, AVERILL PARK, N. Y.



SPACIOUS LAWN OVERLOOKING BEAUTIFUL BURDEN LAKE,  
TOTEM LODGE AND COUNTRY CLUB, AVERILL PARK, N. Y.





THIS SIDE  
TO SWEETS